



Chick-fil-A

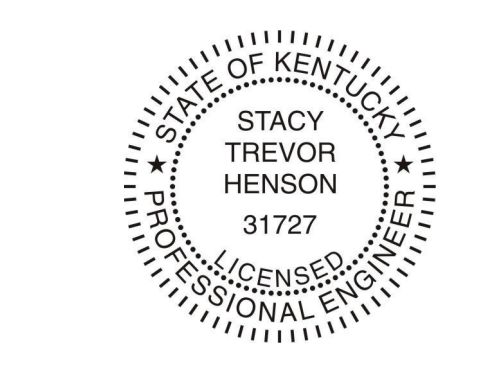
Chick-fil-A
5200 Buffington Road
Atlanta, Georgia
30349-2998

INTERPLAN
INTERPLAN LLC
AR0011595
CA 8660

ARCHITECTURE
ENGINEERING
PERMITTING

220 E. CENTRAL PKWY, STE 4000
ALPHAMETTE SPRINGS, FL 32701
407.645.5008

SEAL:



CHICK-FIL-A
SPRINGHURST
10501 Westport Rd.
Louisville
Kentucky, 40241

FSU#01668

BUILDING TYPE / SIZE: S04-152

RELEASED: PRINTED FOR
Project Status

REVISION SCHEDULE

NO.	DATE	DESCRIPTION
1	12/22/21	OWNER REVISIONS

CONSULTANT PROJECT # 2020.0756

DATE 12/20/21

DRAWN BY CH

CHECKED BY DAK

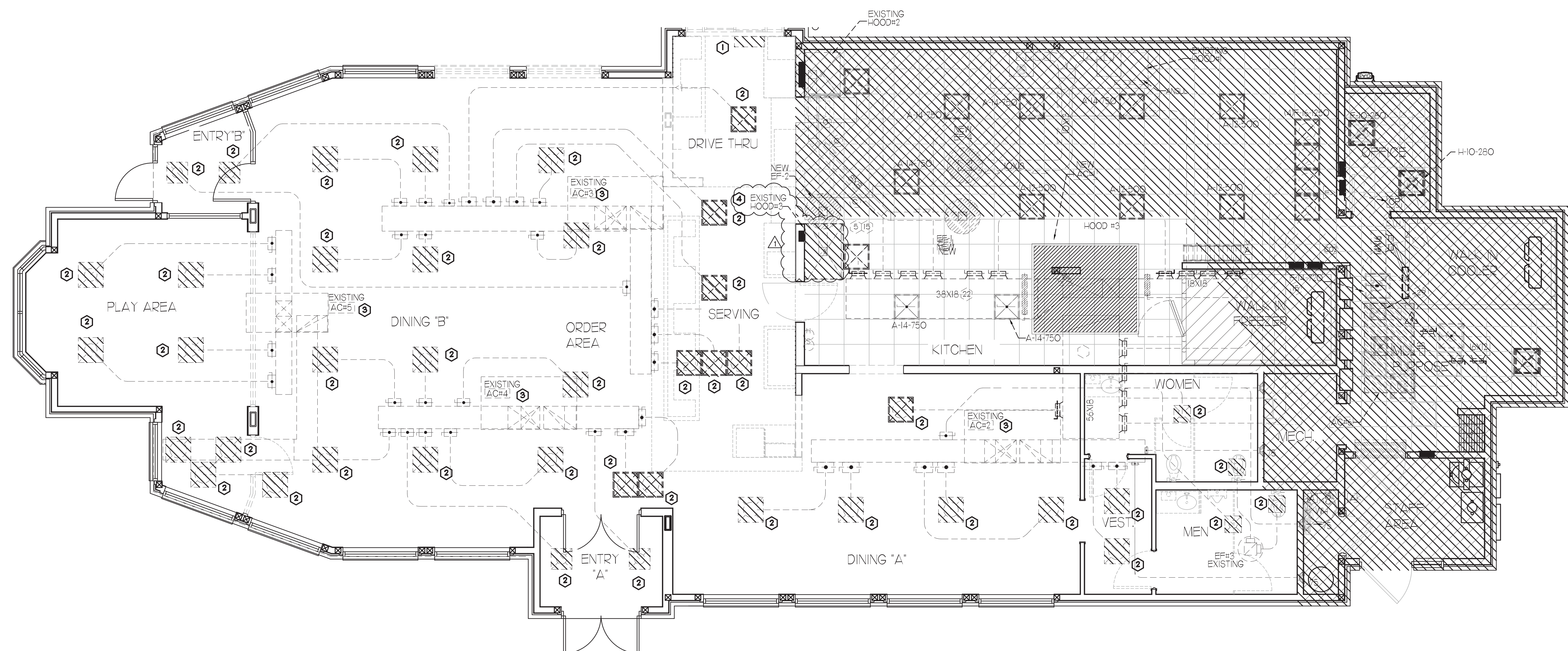
Information contained on this drawing and in all digital files produced for this project may not be reproduced or transmitted in any form or by any means, electronic or mechanical, including photocopying, recording, or by any information storage and retrieval system, without the prior written permission of the project representative.

SHEET MECHANICAL DEMO PLAN

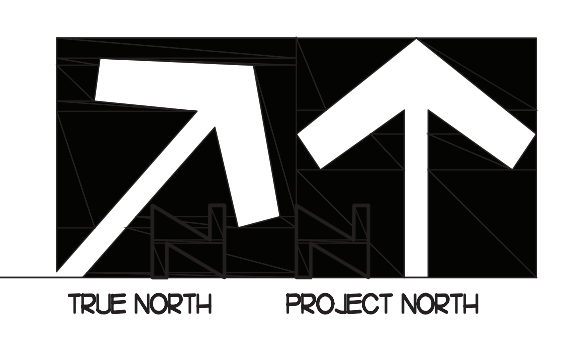
FOR CONSTRUCTION

SHEET NUMBER

M1.0
MARIBR - 07/05/2022 6:46:40 AM



MECHANICAL DEMOLITION PLAN
1/4" = 1'-0"



DEMOLITION LEGEND

	EXISTING EQUIPMENT, DUCT, AIR DEVICES ETC. TO REMAIN INTACT.
	EXISTING EQUIPMENT, DUCT, AIR DEVICES ETC. TO BE DEMOLISHED.

LEGEND

A-12-400	TYPE - NECK SIZE - CFM	(EPH)	EXHAUST FAN #I (TYP)
	SPIN-IN FITTING WITH MANUAL BALANCING DAMPER, WITHOUT SCOOP	(ACH)	AIR CONDITIONING UNIT #I (TYP.)
	SPIN-IN HARD O FLEXIBLE O DIFFUSER		RETURN/EXHAUST (TYP.)
	EXISTING EQUIPMENT, DUCT, & AIR DEVICE		SUPPLY DIFFUSER, SQ FACE (TYP.)
	NEW EQUIPMENT, DUCT, & AIR DEVICE	(1)	PLAN NOTE REFERENCE
(S)	REMOTE TEMPERATURE SENSOR		MANUAL VOLUME DAMPER
(H)	HUMIDITY SENSOR		DIRECTION OF THROW ON DIFFUSER
(A)	STROBE AUDIO/VISUAL ALARM-ANNUNCIATOR		CO2 SENSOR
(2X)18	DUCT SIZE (REVERSE FOR ELEVATION VIEWS) 1ST NUMBER - HORIZONTAL DIMENSION 2ND NUMBER - VERTICAL DIMENSION	(P)	PULL STATION
	POINT OF DISCONNECTION	(CP)	CONTROL PANEL
	POINT OF CONNECTION	(SD)	SMOKE DETECTOR
	INDICATES 2-WAY DIFFUSER. INDICATES BLANKED OFF SIDE		

DEMOLITION NOTES

- CONTRACTOR IS RESPONSIBLE FOR OBTAINING ALL NECESSARY PERMITS AND PAYING ALL APPLICABLE FEES.
- DISPOSAL OF EQUIPMENT AND MATERIALS REQUIRED TO BE REMOVED SHALL BE THE RESPONSIBILITY OF THE CONTRACTOR PERFORMING THE WORK.
- DE-ENERGIZE ALL ELECTRICAL CIRCUITS RELATED TO EQUIPMENT THAT WILL BE MOVED OR REMOVE PRIOR TO STARTING WORK. DE-ENERGIZE CIRCUITS SHALL BE PROTECTED WITH LOCKING DEVICES USING APPROPRIATE WARNING LABELS.
- MECHANICAL CONTRACTOR SHALL BE RESPONSIBLE FOR PATCHING ROOF AFTER REMOVAL OF EXISTING MECHANICAL EQUIPMENT. SEE ARCHITECTURAL DRAWINGS FOR ROOF PATCHING REQUIREMENTS.
- EXCEPT WHERE NOTED, EXISTING REMOTE TEMPERATURE AND/OR HUMIDITY SENSORS TO REMAIN. IF DURING RENOVATION PURPOSES CONTROLS SHALL BE TAKEN DOWN. MECHANICAL CONTRACTOR SHALL BE RESPONSIBLE FOR REINSTALLING AND TO PROVIDE ANY ADDITIONAL WIRING NEEDED.
- MECHANICAL CONTRACTOR SHALL PERFORM ROUTINE MAINTENANCE ON EXISTING ROOFTOP UNITS AND MAKE ANY NECESSARY REFRIGERANT WITH NO LEAKS, NEW BELTS AND REPLACE AND FAN MOTORS NECESSARY.
- DISCONNECT GAS PIPING FROM EXISTING ROOFTOP UNITS) TO BE REPLACED. PLUMBING CONTRACTOR WILL REMOVE EXISTING GAS PIPING TO BE DEMOLISHED.
- CONTRACTOR SHALL INDICATE SALVAGE VALUE IN BID FOR ROOFTOP UNITS BEING REPLACED.

DEMOLITION KEY NOTES

- EXISTING AIR CURTAIN TO BE REPLACED WITH NEW ADH. REFER TO MJI AND M3.I.
- DETACH AND DEMOLISH EXISTING AIR DEVICE SEE SHEET MJI FOR NEW AIR DEVICE LOCATIONS.
- EXISTING ELECTRIC COOLING/GAS HEATING ROOFTOP HVAC UNIT AND ASSOCIATED TEMPERATURE SENSOR TO REMAIN REFER TO SHEET M3.I FOR FURTHER INFORMATION.
- DEMOLISH EXISTING KITCHEN HOOD, ALL ASSOCIATED GREASE DUCT, AND EXHAUST FAN ON ROOF TO REMAIN.

FIELD VERIFY ALL CONDITIONS

NOTE AS NOTED IN THE SPECIFICATIONS, ALL WIRING LAYOUTS, PIPING LAYOUTS AND DUCT LAYOUTS ARE SCHEMATIC. EXACT LOCATIONS SHALL BE DETERMINED BY THE CONTRACTOR AND STRUCTURE OF THE BUILDING AND SHALL BE VERIFIED AND COORDINATED IN THE FIELD. EACH TRADE CONTRACTOR SHALL VERIFY WITH THE GENERAL CONTRACTOR THAT HE HAS THOROUGHLY REVIEWED AND COORDINATED ALL LOCATIONS AND ROUTINGS WITH ALL OTHER TRADES PRIOR TO FABRICATION OF CONDUITS, DUCTS, OR PIPING, AND START OF INSTALLATION OF SAME (INCLUDING SPRINKLER PIPING WHEN PRESENT ON JOB). ANY INSTALLATION OR CONSTRUCTION CONFLICTS WHICH OCCUR IN THE FIELD SHALL BE RESOLVED BY THE TRADE CONTRACTOR TO THE SATISFACTION OF THE OWNER AND ARCHITECT AND AT NO EXPENSE TO THE OWNER, ARCHITECT AND/OR GENERAL CONTRACTOR.

THE CONTRACTOR SHALL CONTACT THE ARCHITECT, ENGINEER OR OWNER PRIOR TO BIDDING FOR INTERPRETATIONS AND CLARIFICATIONS OF THE DESIGN AND INCLUDE IN HIS BID ALL COSTS TO MEET THE DESIGN INTENT. CLARIFICATIONS MADE BY THE ARCHITECT, ENGINEER OR OWNER AFTER BIDDING WILL BE FINAL AND SHALL BE IMPLEMENTED AT CONTRACTORS COST. BIDDING CONTRACTORS SHALL HAVE A WORKING KNOWLEDGE OF LOCAL CODES AND ORDINANCES AND SHALL INCLUDE IN THEIR BIDS THE COSTS FOR ALL WORK INSTALLED IN STRICT ACCORDANCE WITH GOVERNING CODES, THE PLANS AND SPECIFICATIONS NOT WITHSTANDING, THE CONTRACTOR SHALL ALERT ARCHITECT, ENGINEER OR OWNER OF ANY APPARENT DISCREPANCIES BETWEEN GOVERNING CODES AND DESIGN INTENT.

HVAC KEY NOTES

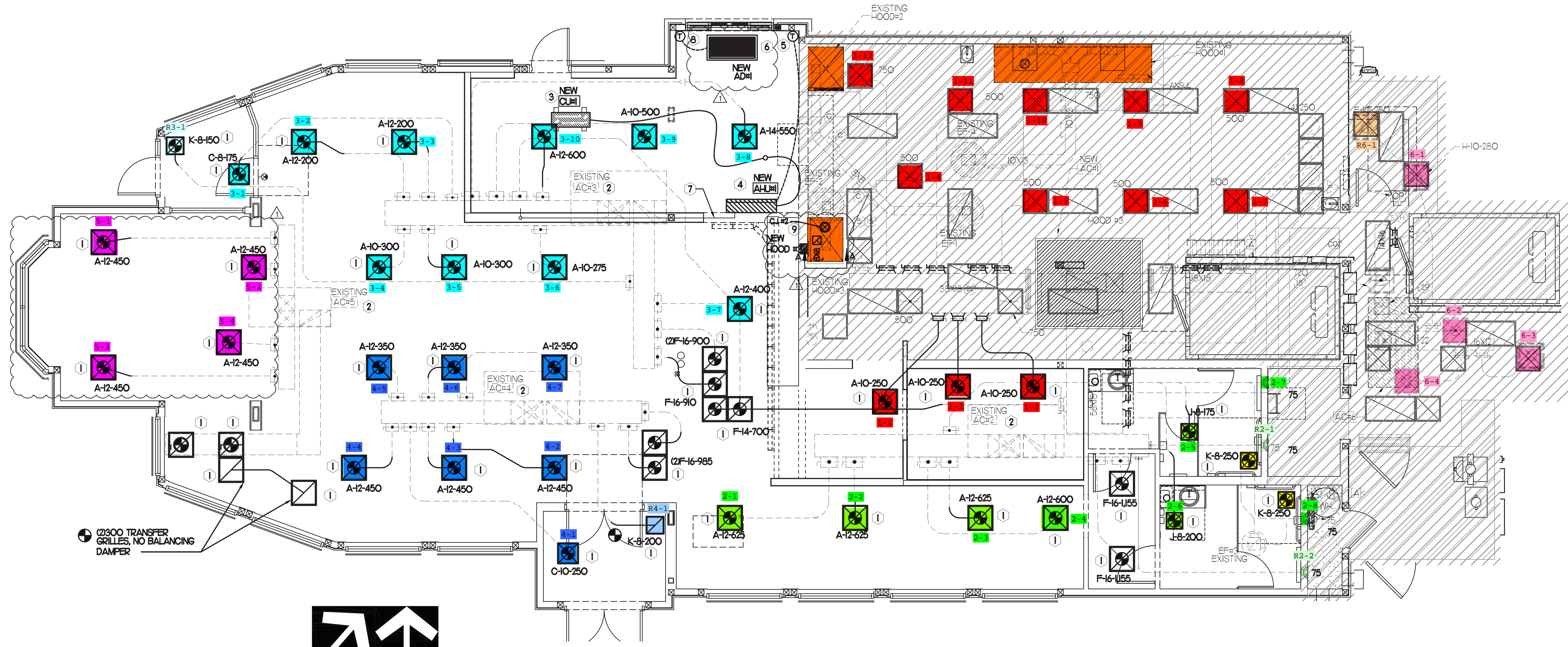
- 1 REPLACE EXISTING AIR DEVICE WITH NEW, CONNECT TO EXISTING DUCT SYSTEM. CONTRACTOR SHALL INSTALL NEW DUCT AS REQUIRED. ALL NEW ADDED DUCTWORK SHALL BE RIGID. USE OF FLEX DUCT IS LIMITED TO A MAXIMUM OF 4'-0" AROUND OBSTRUCTIONS. NO EXCEPTIONS (TYP). ALL INSTALL HARD 90'S DOWN TO SUPPLY AIR & RETURN AIR GRILLES. SEE TAKE-OFF DETAIL ON SHEETS M-1 & SPECIFICATIONS ON M&J RE-BALANCE TO AIR QUANTITY AS SHOWN ON PLAN. PROVIDE WITH ACCESSIBLE MANUAL VOLUME DAMPER. WHERE DUCTWORK IS BEING REUSED, PROVIDE A 4 INCH COLLAR ON EACH DIFFUSER, STRAP & TAPE THE DIFFUSER TO ANY EXISTING DUCTWORK. SEE DIFFUSER & GRILLE DETAIL FOR NEW CEILING ON SHEET M-11 INSULATE AND RECONNECT AS REQUIRED (TYP). ALL CONTRACTOR SHALL VERIFY AND COORDINATE ALL DEVICE LOCATIONS WITH LIGHTING AND CEILING LAYOUT AND ALL WALL ELEMENTS AS REQUIRED PRIOR TO BID.
- 2 EXISTING ROOFTOP HVAC UNIT TO REMAIN. MECHANICAL CONTRACTOR TO CLEAN AND ADJUST UNIT, CHEMICALLY CLEAN COILS, PERFORM AN OIL SAMPLE TEST ON COMPRESSORS TO VERIFY CONDITION, REPLACE BELTS, VERIFY ALL CONTROLS ARE FUNCTIONAL AND MAKE SURE ALL EQUIPMENT IS IN PROPER OPERATING CONDITION. REPLACE ANY DEFECTIVE PARTS OR EQUIPMENT, GREASE AND/OR REPLACE IF REQUIRED, FAN BEARINGS, CHECK SHAFT FOR SCORING AND CHECK MOTORS FOR PROPER AMPERAGE DRAW. CLEAN OR REPLACE CONDENSATE DRAIN LINE AS REQUIRED. REBALANCE CFM AS SHOWN ON PLANS, RTU SCHEDULE & KITCHEN/DINING PRESSURIZATION SCHEDULE. FINISH UNIT WITH THREE SETS OF STANDARD FILTERS. CONTRACTOR TO REPLACE FILTERS JUST PRIOR TO AIR BALANCE AND ONCE AGAIN AFTER FINAL STORE CLEANING IS COMPLETE. REFER TO ROOFTOP UNIT SCHEDULE SHEET M-1 FOR FURTHER INFORMATION AND ADDITIONAL REQUIREMENTS. REPORT IN WRITING ANY PROBLEMS WHICH WOULD REQUIRE REPLACEMENT OF ROOFTOP UNIT INSTEAD OF REUSE TO THE TENANT'S CONSTRUCTION MANAGER. FIELD VERIFY EXACT CONDITION AND LOCATION PRIOR TO BID.
- 3 SET CONDENSING UNIT ON ROOF USING TWO CURBS PLUS OPEN EQUIPMENT CURBS. SECURE CONDENSING UNIT TO CURBS ARRANGED IN PARALLEL. SET LONG SIDE OF CURB PARALLEL TO ROOF SLOPE FLASH INTO ROOF BY GC. FINAL LOCATION TO BE DETERMINED IN THE FIELD. ALL MAINTENANCE CLEARANCE OF NEW AND EXISTING EQUIPMENT SHALL BE MAINTAINED.
- 4 LOCATE AHU IN MOUNTED 7'-0" AFF TO BOTTOM OF UNIT. ROUTE REFRIGERANT PIPING ABOVE CEILING AND UP THRU ROOF TO CONDENSING UNIT. REFER TO M&J FOR MORE INFORMATION.
- 5 LOCATE AHU TSTAT AT 5'-0" AFF. COORDINATE EXACT LOCATION WITH OTHER TRADES. ROUTE WIRING BACK TO AHU AT WALL.
- 6 REPLACE EXISTING AIR CURTAIN WITH NEW ADH AIR CURTAIN MOUNTED IN CEILING GRID + 15" OFF THE EXTERIOR WALL. MECHANICAL CONTRACTOR SHALL ADJUST AIR DEFLECTORS TOWARD BOTTOM OF TORMAX DOOR OPENING.
- 7 RUN 5/8" CONDENSATE LINE IN WALL DOWN TO DRAIN.
- 8 LOCATE AHU TSTAT AT 5'-0" AFF. COORDINATE EXACT LOCATION WITH OTHER TRADES. ROUTE WIRING BACK TO ADH AT WALL.
- 9 SEE ELEVATION ON M&J FOR CJ FAN DUCTING REQUIREMENTS.

HVAC GENERAL NOTES

- 1 DUCT SIZES SERVING DIFFUSERS AND GRILLES ARE SAME SIZE AS DIFFUSER OR GRILLE NECK UNLESS NOTED OTHERWISE.
- 2 MECHANICAL CONTRACTOR SHALL BALANCE HVAC SYSTEM AS SHOWN ON THE PLAN & RTU SCHEDULE ON SHEET M-3.1. IF AIR FLOWS DIFFER BY MORE THAN 5%, CONTACT CFA CONSTRUCTION MANAGER.
- 3 NO PIPING OR DUCTWORK ALLOWED ABOVE ANY ELECTRICAL/CONTROL PANELS.
- 4 COORDINATE NEW WORK WITH EXISTING CONDUITS, STRUCTURE & PIPING. FIELD VERIFY EXISTING CONDITIONS PRIOR TO COMMENCING WORK. CONTRACTOR TO NOTIFY DESIGN TEAM WITHOUT DELAY IF ACTUAL LOCATION OF EXISTING MECHANICAL EQUIPMENT DOES NOT MATCH FLOOR PLAN.
- 5 CONTRACTOR SHALL CLEAN & REFINISH ALL EXISTING DUCTWORK. PATCH & REPAIR OPENING AIR TIGHT OF EXISTING DUCTWORK AS REQUIRED (TYPICAL ALL). FIELD VERIFY AND COORDINATE ALL EXISTING HVAC SIZES, LOCATIONS, AND CONDITION PRIOR TO BID.
- 6 REUSE AND REWORK EXISTING HVAC DUCTWORK. PROVIDE NEW SECTION FOR RECONNECTION AS REQUIRED. FIELD VERIFY ALL REQUIREMENTS PRIOR TO BID.
- 7 CONTRACTOR SHALL BALANCE, INSPECT, REPAIR, OR REPLACE AS NECESSARY IF REQUIRED FOR EXISTING CEILING MOUNTED AIR DEVICES TO REMAIN. FIELD VERIFY AND COORDINATE EXACT SIZE, AIR QUANTITY, LOCATION, AND CONDITION PRIOR TO BID. AIR FLOW SHALL REMAIN AS IS UNLESS NOTED ON PLAN OR DIRECTED BY CONSTRUCTION MANAGER. ANY DEFICIENCIES AND OR DISCREPANCIES SHALL BE REPORTED TO ARCHITECT/ENGINEER IMMEDIATELY. COORDINATE AIR BALANCE RESULTS WITH CONSTRUCTION MANAGER.

NOTE:
ALL NEW HOODS SHALL BE RATED WITH ONE INCH THICK LAYER OF FACTORY INSTALLED INSULATION TO MEET ZERO INCH CLEARANCE TO COMBUSTIBLE MATERIALS. HOOD SHALL BE CERTIFIED BY ETL SPECIFICATIONS AND SHALL CONFORM TO UL STANDARD 710, BUILT PER NFPA 96 SECTION 4.2.2, AND NSF LISTED.

NOTE:
IF BALANCING DAMPERS ARE NOT EXISTING IN THE BRANCH DUCT OR AT THE TAKE-OFF, MECHANICAL CONTRACTOR SHALL SUPPLY AND INSTALL NEW BALANCING DAMPERS WITHIN THE BRANCH DUCT (TYPICAL).



MECHANICAL FLOOR PLAN
1/4" = 1'-0"
TRUE NORTH PROJECT NORTH



Chick-fil-A
5200 Buffington Road
Atlanta, Georgia
30349-2998

INTERPLAN
INTERPLAN LLC
AR0011595
CA 8660
ARCHITECTURE
ENGINEERING
PERMITTING

220 E. CENTRAL PKWY, STE 4000
ALAMONTE SPRINGS, FL 32701
407.645.5008



CHICK-FIL-A
SPRINGHURST
10501 Westport Rd.
Louisville
Kentucky, 40241

FSU#01668

BUILDING TYPE / SIZE: S04-152
RELEASED:
PRINTED FOR:
Project Status
REVISION SCHEDULE

NO.	DATE	DESCRIPTION
1	11.18.22	CH
2	01	OPERATOR REVISION

CONSULTANT PROJECT # 2020.0756
DATE 12/2021
DRAWN BY CH
CHECKED BY DAK
Information contained on this drawing and in all digital files produced for above named project may not be reproduced or transmitted in any form or by any means, electronic or mechanical, including photocopying, recording, or by any information storage and retrieval system, without the prior written or verbal consent from authorized project representatives.
SHEET MECHANICAL FLOOR PLAN

FOR CONSTRUCTION
SHEET NUMBER
M1.1
MARIBR - 07/05/2022 6:46:22 AM

MARK	TONNAGE	AREA SERVED	COOLING CAPACITY (MBH)		HEATING CAPACITY (MBH)		FAN SECTION (CFM)		EXISTING MANUFACTURER/ MODEL	NEW MANUFACTURER/ MODEL	ARI RATINGS	PERCENTAGE OF OUTDOOR AIR	ELECTRICAL DATA		REMARKS	APPROX. NET WEIGHT INCLUDING OPTIONS
			TOTAL	SENS	INPUT	OUTPUT	STAGES	SUPPLY					O.A.	HP		
EXISTING AC1	25.0	KITCHEN	-	-	-	-	8000	2000	-	-	-	25.0%	-	-	17	-
EXISTING AC2	8.5	DINING B	-	-	-	-	3000	540	-	-	18.0%	-	-	17	-	
EXISTING AC3	10.0	DINING C	-	-	-	-	3500	640	-	-	18.0%	-	-	17	-	
EXISTING AC4	7.5	DINING A	-	-	-	-	2650	480	-	-	18.0%	-	-	17	-	
EXISTING AC5	5.0	PLAYGROUND	-	-	-	-	1800	320	-	-	17.0%	-	-	17	-	
EXISTING AC6	3.0	KITCHEN	-	-	-	-	1180	180	-	-	15.0%	-	-	17	-	

ALL NEW ROOFTOP UNITS SHALL INCLUDE A HUMIDITROL OPTION WITH FACTORY WALL MOUNTED HUMIDITY SENSOR.

- PROVIDE DIFFERENTIAL ENTHALPY ECONOMIZER WITH POWER EXHAUST.
- PROVIDE DIFFERENTIAL ENTHALPY ECONOMIZER WITH BAROMETRIC EXHAUST.
- PROVIDE NEW 1/4" HIGH ROOF CURB.
- SEE DETAIL M42 FOR SETTING OF PRODDIGY M3 AND M-8 IMC BOARD CONTROLS/LECTO PARAMETERS BY IMC.
- PROVIDE FACTORY INSTALLED AND UNIT POWERED 115V GFI SERVICE OUTLET.
- PROVIDE FACTORY INSTALLED 115V GFI SERVICE OUTLET.
- PROVIDE FACTORY INSTALLED RETURN AND SUPPLY SIZE SMOKE DETECTOR.
- PROVIDE FACTORY INSTALLED NON-FUSED DISCONNECT.
- PROVIDE 2" MERV 8 THROW AWAY FILTERS.
- PROVIDE JINGED PANELS FOR FILTER ACCESS, FAN MOTOR ACCESS, COMPRESSOR ACCESS AND CONTROL COMPARTMENT ACCESS.
- ADJUST GAS MANIFOLD PRESSURE AT LOCATIONS WHERE ELEVATION EXCEEDS 2000' ABOVE SEA LEVEL AS RECOMMENDED BY MANUFACTURER.
- PROVIDE FACTORY COIL HAL GUARD, FIELD INSTALLED.
- PROVIDE UNIT WITH NSAV BLOWER.
- PROVIDE HUMIDITROL OPTION WITH FACTORY WALL MOUNTED HUMIDITY SENSOR (STATES OF CA AND AZ EXCLUDED).
- PROVIDE FACTORY INSTALLED BELT TENSIONER.
- REPLACE EXISTING LENNOX ROOFTOP UNIT WITH NEW SAME SIZE WITH THE SAME MANUFACTURER LENNOX PLACED ON SAME LOCATION ON EXISTING CURB.
- EXISTING UNIT TO REMAIN.

- CONTRACTOR SHALL VERIFY EXACT ELECTRICAL CONNECTIONS, WIRE SIZES, BREAKERS, DISCONNECT, ETC. FOR THE NEW ROOFTOP UNITS PRIOR TO ORDERING AND BID.
- TEST AND BALANCE REPORT SHALL BE DONE PRIOR TO STORE TURNOVER AND SUBMITTED TO CFA'S CONSTRUCTION MANAGER AND TO ENGINEER OF RECORD.
- NEW HVAC EQUIPMENTS SHALL BE INSTALLED IN ACCORDANCE WITH THE MANUFACTURER'S INSTALLATION INSTRUCTIONS INCLUDING CLEARANCES, E SHALL MEET ALL LOCAL AND STATE CODE REQUIREMENTS. INSTRUCTIONS SHALL BE ON SITE AND AVAILABLE FOR ALL INSPECTIONS, SERVICE, REPAIR, OR REPLACEMENT.
- NEW ROOFTOP UNITS ONLY, MECHANICAL CONTRACTOR SHALL RELOCATE THE FACTORY INSTALLED SUPPLY SIDE SMOKE DETECTOR FROM THE BLOWER SECTION TO THE SUPPLY DUCT DROP ABOVE THE FIRST 90 DEGREE DUCT FITTING.
- NEW ROOFTOP UNITS ONLY, THE MECHANICAL CONTRACTOR SHALL SPLICE NEW PLENUM RATED CABLE BETWEEN THE FACTORY SMOKE DETECTOR AND THE FACTORY JACK PLUS. THE NEW WIRING SHALL BE ROUTED THRU THE ROOFTOP UNIT BASE/PAN RACEWAY. SPLICES SHALL BE JOINED WITH CRIMP ON FITTINGS AND HEAT SHRINK JACKETS.

OUTDOOR AIR CALCULATION

ROOM NUMBER & NAME	AREA SQ. FT.	NO. OF PEOPLE	REQ'D OA CFM/PERSON	REQ'D OA CFM/SQ FT	TOTAL OSA	REQ'D EXHAUST AIR PER FIXTURE	REQ'D OSA AC-1	REQ'D OSA AC-2	REQ'D OSA AC-3	REQ'D OSA AC-4	REQ'D OSA AC-5	REQ'D OSA AC-6
KITCHEN	1101	8	750	0.18	258.2			258.20				
RR VESTIBULE	58	0	5.00	0.06	3.5				3.5			
MENS RR	93	0	0.00	0.00	0.0	50/70		0				
WOMENS RR	106	0	0.00	0.00	0.0	50/70		0				
DINING A	270	16	750	0.18	1686			1686				
MECHANICAL ROOM	23	0	5.00	0.06	14			14				
DRIVE THRU	317	4	750	0.18	871				871			
SERVING AREA	213	5	750	0.18	75.8				75.8			
N DINING B	351	24	750	0.18	243.2			243.2				
ORDER AREA	270	0	5.00	0.06	16.2			16.2				
ENTRY 'B'	70	0	5.00	0.06	4.2			4				
S. DINING B	395	34	750	0.18	3261				3261			
ENTRY 'A'	50	0	5.00	0.06	3.0				3			
PLAY AREA	303	12	750	0.18	144.5						144.50	
OFFICE	57	1	5.00	0.06	8.4							8.20
MULTI-PURPOSE	215	0	5.00	0.06	12.9							12.90
STAFF AREA	88	1	5.00	0.06	10.3							10.30
TOTALS					100/140	258.2	173.50	426.30	329.0	144.50		21.0
						2000	540	640	480	320		180

OUTSIDE AIR BASED ON THE 2015 INTERNATIONAL MECHANICAL CODE

DUCTLESS SPLIT SYSTEM HEAT PUMP UNIT SCHEDULE

MARK	COOLING CAPACITY (MBH)	EFFICIENCIES	FAN SECTION (CFM)	ELECTRICAL DATA		R-410A MODEL		MFR	WEIGHT			
				MIN	MAX	SEER	SUPPLY		CIRCUIT AMPACITY	MOCP	VOLTAGE	AHU
AH-U/CH-1 (NEW)	116	36.0	16.2	705-920	28	40	208/1160	PKA-A36KA7	PLZ-HA36NH45	MTSLSB-H	46 LBS	265 LBS

AIR DOOR SCHEDULE

MARK	CFM	VELOCITY	HEATING CAP	HP	AREA SERVED	MODEL	MANUFACTURER	REMARKS
ADM	197	2443	10 KW	3/4	DRIVE THRU	CHA-1-36E	POWERED-AIRE	1

HOOD SCHEDULE

MARK	EXHAUST CFM	SP * TAB PORT	CAPTURE JET CFM & SP.	TYPE	COLLAR SIZE	WIDTH	DEPTH	HEIGHT	MANUFACTURER	MODEL	REMARKS
NEW HOOD#3	701	0.39	30 * 0.29"	CANOPY	8"X8"	42	34	38	HALTON	KVL-C	1

- NOTES: DIMENSIONS OF HOODS INCLUDE BACK AND SIDE SPACERS (HEIGHT DOES NOT INCLUDE CLOSURE PANELS).
1. TYPICAL INSTALLATION FOR NEW HOODS. FIELD VERIFY & COORDINATE WITH HOOD DRAWINGS BY HALTON. REFER TO SHEET M-HJ & M-H2 PRIOR TO BID & CONSTRUCTION.
- NOTE: ALL NEW HOODS SHALL BE RATED WITH ONE INCH THICK LAYER OF FACTORY INSTALLED INSULATION TO MEET 2" ZERO INCH CLEARANCE TO COMBUSTIBLE MATERIALS. HOOD SHALL BE CERTIFIED BY ETL SPECIFICATIONS, AND SHALL CONFORM TO UL STANDARD 710, BUILT PER NFPA 96 SECTION 4.2.2, AND NSF LISTED.
- GREASE EXHAUST DUCT CLEARANCE NOTE: CLEARANCES ABOVE CEILING ARE TIGHT. MECHANICAL CONTRACTOR TO FIELD VERIFY EXACT ROUTING AND CLEARANCES PRIOR TO FABRICATING GREASE EXHAUST DUCT.
- CAPTURE JET NOTE: REFER TO 'CAPTURE-JET' FAN INSTALLATION AND DIMENSIONAL DATA' SCHEDULE ON HALTON SHOP DRAWINGS (SHEET M-HJ) FOR INFORMATION ON CAPTURE JET FAN.
- CLEANOUT DOOR NOTE: DUCT WRAP SHALL BE APPLIED TO THE CLEANOUT DOOR PER THE WRAP MFR'S INSTALLATION INSTRUCTIONS, NO EXCEPTIONS. ALSO, THE CLEANOUT DOOR MUST BE REMOVABLE WITHOUT TOOLS AND MUST BE CLEARLY AND PERMANENTLY LABELED.
- HOOD ELEVATION NOTE: HOOD ELEVATIONS ON THIS SHEET ONLY SERVE ILLUSTRATIVE PURPOSES. SEE DETAILS ON HALTON SHOP DRAWINGS ON SHEET M-HJ FOR DETAILS ON STANDOFFS, CLEARANCES, AND HOOD CONSTRUCTION.

EXHAUST FAN SCHEDULE

MARK	CFM	ESP	HPM	TP SPEED (RPM)	HP	AREA SERVED	MODEL	MANUFACTURER	REMARKS
EXISTING EF1	701	-	-	-	-	HOOD#2	-	-	7
EXISTING EF2	701	-	-	-	-	NEW HOOD#3	-	-	7
EXISTING EF3	500	-	-	-	-	RESTROOMS	-	-	7
EXISTING EF4	1700	-	-	-	-	HOOD#1	-	-	7

- NOTES: GREASE EXHAUST FAN RPM BASED ON 80 DEGREE F AIR AT 1000 FEET ABOVE SEA LEVEL. PROVIDE FACTORY INSTALLED JINGED BASE KIT. CHICK-FIL-A HAS A NATIONAL ACCOUNT WITH TOM BARRON COMPANY FOR THE FANCLUB PACKAGE. THE MECHANICAL CONTRACTOR IS REQUIRED TO PURCHASE THE FANCLUB PACKAGE DIRECTLY FROM TOM BARRON COMPANY. CONTACT MR. SCOTT GEORGE AT 404-351-0100 FOR PRICING AND AVAILABILITY. FANS AND CURBS NOT PURCHASED THRU TOM BARRON COMPANY WILL NOT BE ACCEPTED.

- PROVIDE FACTORY 1-0" BASE CURB AND EXTENSION.
- PROVIDE FACTORY INSTALLED, PRE-WIRED, NEMA 3 NON-FUSED DISCONNECT.
- PROVIDE AND INSTALL ROOFTOP SOLUTIONS G2 DRIP GUARD. MECHANICAL CONTRACTOR TO CONTACT ROOFTOP SOLUTIONS AT 800-919-7034.
- PROVIDE FACTORY INSTALLED HELICAL SPRING AUTOMATIC BELT TENSIONER.
- INTEGRAL THERMAL OVERLOAD WITH AUTOMATIC RESET.
- EXISTING EXHAUST FAN TO REMAIN.

AIR DEVICE SCHEDULE

MARK	DESCRIPTION	LOCATION	NECK SIZE	FACE SIZE	FRAME TYPE	REMARKS
A	PRICE MODEL APDC ALUMINUM SUPPLY AIR DIFFUSER WITH INDIVIDUALLY ADJUSTABLE CURVED AIR PATTERN CONTROLLERS.	DINING AREA KITCHEN	SEE PLAN	24X24	LAY-IN	1.8
C	PRICE MODEL SMCD STEEL SUPPLY AIR DIFFUSER FIELD ADJUSTABLE AIR PATTERN CONTROLLERS.	ENTRYS	14X14	20X20	BEVELLED	1.3,5.7
D	PRICE MODEL 22 DOUBLE DEFLECTION ALUMINUM SIDEWALL RETURN GRILLE, FRONT BLADE PARALLEL TO SHORT SIDE.	PLAYAREA	SEE PLAN	10X8	SURFACE	1
F	PRICE MODEL 22 DOUBLE DEFLECTION ALUMINUM SIDEWALL RETURN GRILLE, FRONT BLADE PARALLEL TO LONG SIDE.	PLAYAREA	SEE PLAN	24X24	SURFACE	1.8
G	PRICE MODEL 22 DOUBLE DEFLECTION ALUMINUM SIDEWALL SUPPLY GRILLE, FRONT BLADE PARALLEL TO LONG SIDE.	PLAYAREA	SEE PLAN	14X12	NA	1
H	PRICE MODEL APDC ALUMINUM SUPPLY AIR DIFFUSER WITH INDIVIDUALLY ADJUSTABLE CURVED AIR PATTERN CONTROLLERS.	OFFICE	12	24X24	LAY-IN	1.6,8
J	PRICE MODEL SMCD STEEL SUPPLY AIR DIFFUSER FIELD ADJUSTABLE AIR PATTERN CONTROLLERS.	RESTROOMS	10X10	16X16	BEVELLED	1.2,3.5,7
K	PRICE MODEL APDR ALUMINUM PERFORATED FACE RETURN AIR GRILLE.	RESTROOMS ENTRYS	14X14	17X17	SURFACE	1.4,5.7
L	PRICE MODEL 21 SINGLE DEFLECTION ZERO DEGREE DEFLECTION ALUMINUM SIDEWALL RETURN GRILLE, FRONT BLADE PARALLEL TO LONG SIDE.	PLAYAREA	12X12	14X14	SURFACE	1

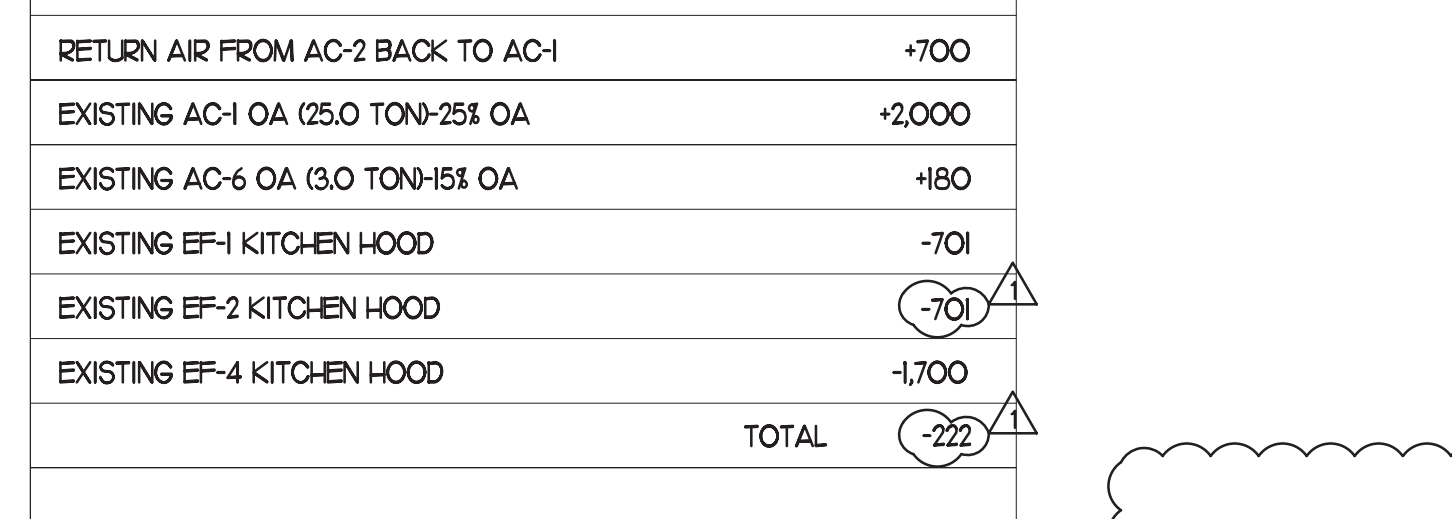
- NOTES: MECHANICAL CONTRACTOR SHALL PURCHASE THE AIR DEVICES DIRECTLY FROM TOM BARRON COMPANY. CONTACT MR. SCOTT GEORGE AT 404-351-0100, FOR PRICING AND AVAILABILITY. AIR DEVICES NOT PURCHASED THRU TOM BARRON COMPANY WILL NOT BE ACCEPTED.

- REMARKS: 1. STANDARD OFF WHITE FINISH. 2. PROVIDE MODEL V07S NECK DAMPER. 3. SEE DRAWING M-J FOR THROW. 4. PROVIDE MODEL V07 NECK DAMPER ON GRILLES IN RESTROOMS. 5. PROVIDE BACKPAN MC TO SEAL JOINTS WITH MASTIC AND INSULATE EXTERNALLY. 6. PROVIDE V07 NECK DAMPER, ADJUSTABLE THRU DIFFUSER FACE. 7. FIELD INSULATE BACKPAN AS SHOWN ON DETAIL 2NA-4. 8. FACTORY INSULATED R-6 BACKPAN.

GREASE ACCESS DOOR SCHEDULE

MARK	OPENING SIZE	DOOR SIZE	REMARKS
(A)	6.5H X 12W	8.5H X 14W	1
(B)	10.5H X 14W	12.5H X 16W	1
(C)	5.5H X 14W	7.5H X 16W	1

1. ACCESS DOORS SHALL BE UL 1978 LISTED OR FIELD FABRICATED, REQUIRE NO TOOLS FOR REMOVAL AND MEET THE REQUIREMENTS OF THE CURRENT EDITION OF THE IMC. ACCESS DOOR ASSEMBLY SHALL BE WELDED IN PLACE TO THE GREASE EXHAUST DUCT AND THE ACCESS DOOR SHALL BE SECURED WITH TUMBLER SCREWS. ACCESS DOORS SHALL BE SEALED WITH A MINIMUM 1500 DEGREE GASKET MATERIAL EQUIVALENT TO THAT MANUFACTURED BY BRETON INDUSTRIES, INC (800) 382-2491.



KITCHEN PRESSURIZATION

RETURN AIR FROM AC-2 BACK TO AC-1	+700
EXISTING AC-1 OA (25.0 TON)-25% OA	+2,000
EXISTING AC-6 OA (3.0 TON)-15% OA	+180
EXISTING EF-1 KITCHEN HOOD	-701
EXISTING EF-2 KITCHEN HOOD	-701
EXISTING EF-4 KITCHEN HOOD	-1700
TOTAL	-222

DINING PRESSURIZATION

EXISTING AC-2 OA (25.0 TON)-15% OA	+540
EXISTING AC-3 OA (22.5 TON)-15% OA	+640
EXISTING AC-4 OA (6 TON)-15% OA	+480
EXISTING AC-5 OA (6 TON)-17% OA	+320
EXISTING EF-3 RESTROOM EXHAUST	-500
RETURN AIR FROM SIDE DINING BACK TO KITCHEN	-700
BUILDING POSITIVE PRESSURE	TOTAL +780
BUILDING POSITIVE PRESSURE	-558

KITCHEN HOOD SYSTEMS NOTES

- CHICK-FIL-A MAINTAINS A NATIONAL ACCOUNT WITH HALTON CO. FOR THE HOODS. CHICK-FIL-A WILL PURCHASE AND PROVIDE THE HOODS FOR INSTALLATION BY THE MECHANICAL CONTRACTOR. THE MECHANICAL CONTRACTOR SHALL BE RESPONSIBLE FOR RECEIVING THE HOODS. CONTACT HALTON CO. AT 270-237-5600 FOR MORE INFO.
- THE FIRE SUPPRESSION SYSTEM SHALL CONSIST OF A COMPLETE WET ANSUL SYSTEM FURNISHED BY HALTON. THE HOOD SHALL BE FURNISHED PRE-PIPED BY HALTON.
- THE R-102 ANSUL FIRE SUPPRESSION SYSTEM EXTERNAL TO THE HOODS SHALL BE INSTALLED IN ACCORDANCE WITH HOOD MANUFACTURER'S SHOP DRAWINGS BY AN AUTHORIZED ANSUL SYSTEM INSTALLER HIRED BY HALTON.
- HOOD EXHAUST DUCTWORK SHALL BE 16 GA. BLACK STEEL WITH CONTINUOUS LIQUID TIGHT WELD OF JOINTS & SEAMS.
- TURNS IN GREASE EXHAUST DUCTWORK SHALL BE LONG RADIUS TYPE, WITH A CENTERLINE RADIUS R=3W/2, NO EXCEPTIONS ALLOWED. NO MITERED FITTINGS ALLOWED.
- ALL STAINLESS STEEL CLOSURE PANELS SHALL BE SUPPLIED BY HOOD MANUFACTURER AND INSTALLED BY THE MECHANICAL CONTRACTOR ACCORDING TO MANUFACTURER'S RECOMMENDATIONS.
- SLOPE ALL GREASE EXHAUST DUCT BACK TO HOOD AT 1/4" PER FOOT OF RUN.
- WRAP NEW GREASE DUCT WITH UNIFRAX FIREWRAP. INSULATION ON ACCESS DOORS SHALL BE INSTALLED ACCORDING TO MANUFACTURER'S INSTALLATION RECOMMENDATIONS. UNIFRAX FIREWRAP PRODUCT USED SHALL MEET LOCAL CODE REQUIREMENTS.
- SUPPORT HOODS WITH T-THREADED ROD AT EACH FACTORY SUPPORT POINT. EACH SUPPORT POINT MUST SUPPORT THE HOOD WEIGHT EQUALLY. ATTACH TO STRUCTURE AS DETAILED ON STRUCTURAL DRAWINGS.



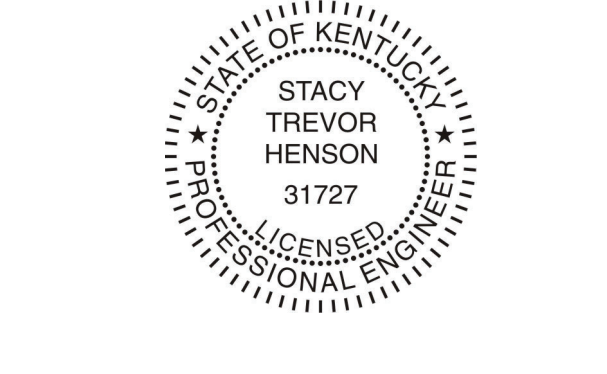
Chick-fil-A
 5200 Buffington Road
 Atlanta, Georgia
 30349-2998

INTERPLAN
 INTERPLAN LLC
 AR0011595
 CA 8660

ARCHITECTURE
 ENGINEERING
 PERMITTING

220 E. CENTRAL PKWY, STE 4000
 ALFAMONTE SPRINGS, FL 32711
 407.645.5008

SEAL:



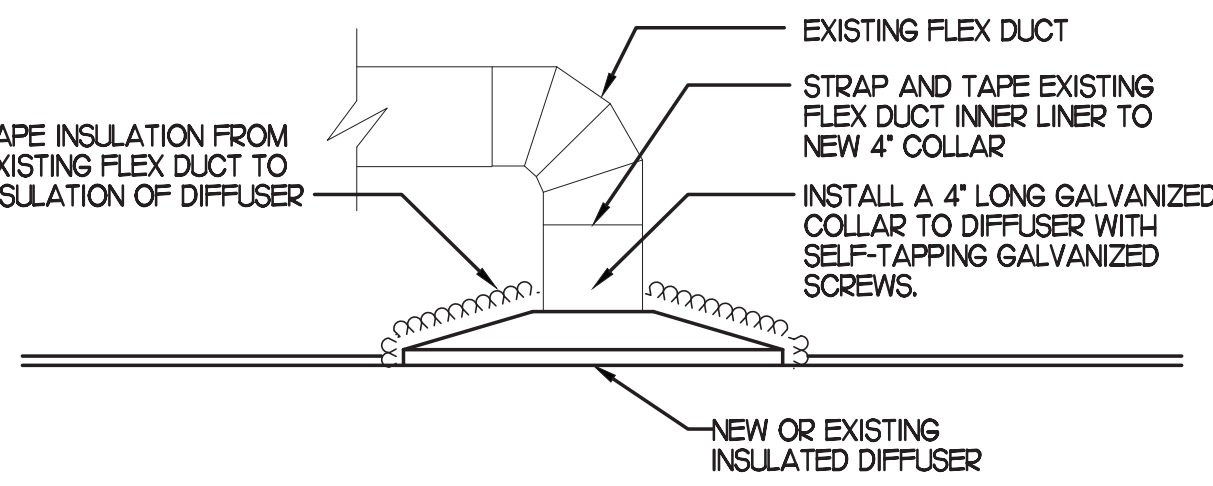
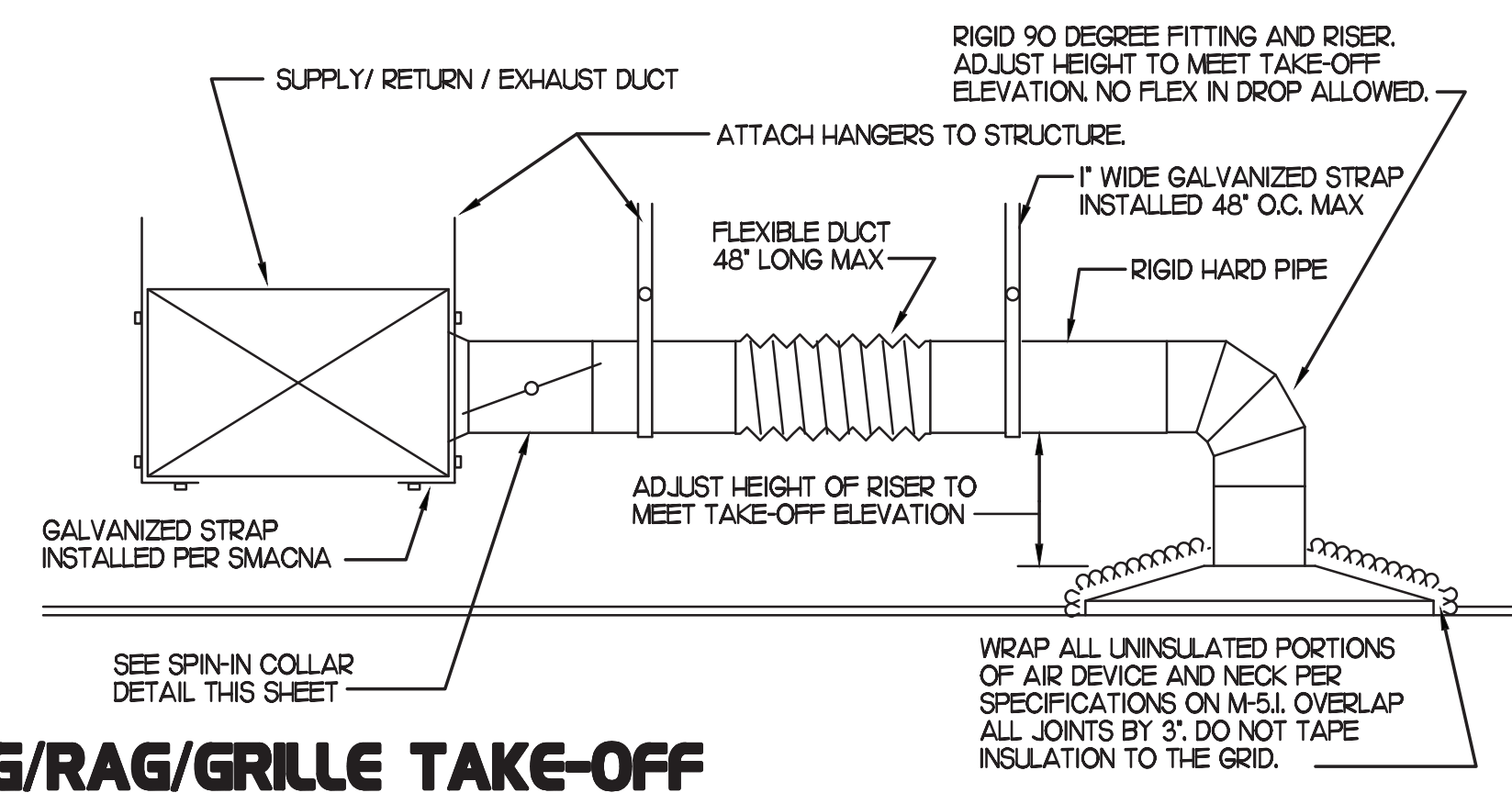
CHICK-FIL-A
SPRINGHURST
 10501 Westport Rd.
 Louisville
 Kentucky, 40241

FSU#01668

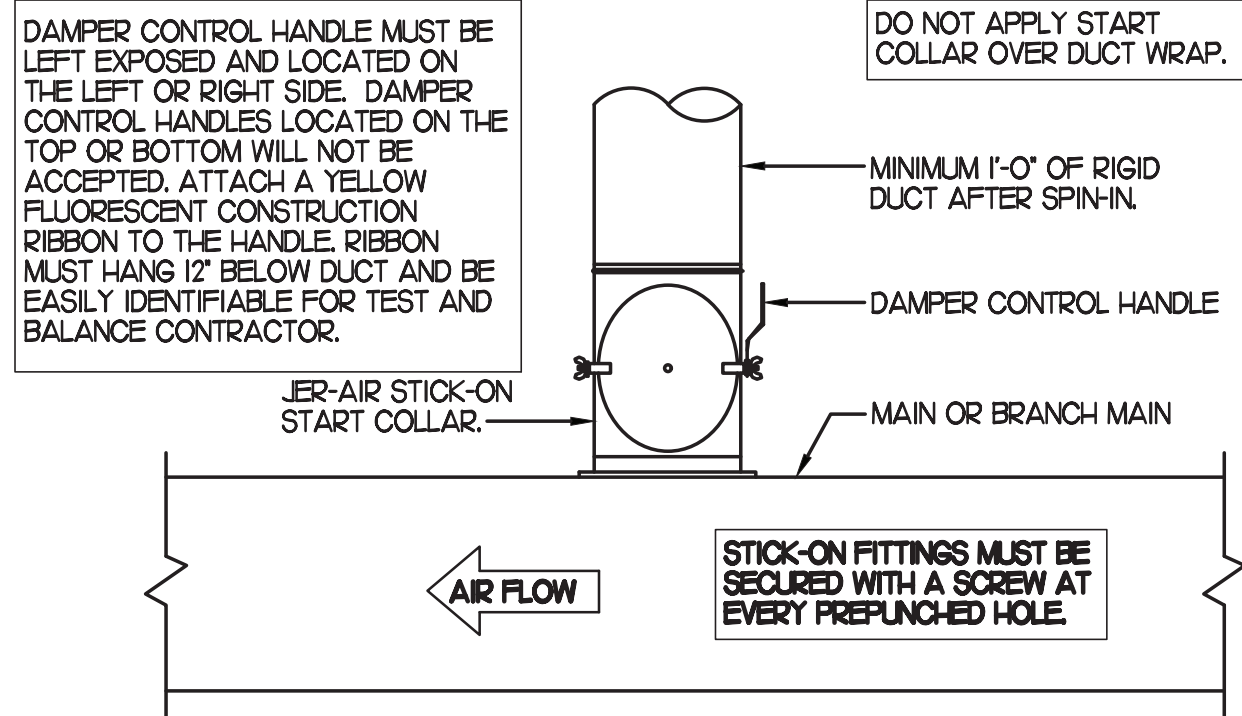
BUILDING TYPE / SIZE: S04-152
 RELEASED: 12/2021
 PRINTED FOR: DAK
 Project Status: MECHANICAL SCHEDULES

NO.	DATE	DESCRIPTION
1	12/2021	ISSUED FOR PERMITTING

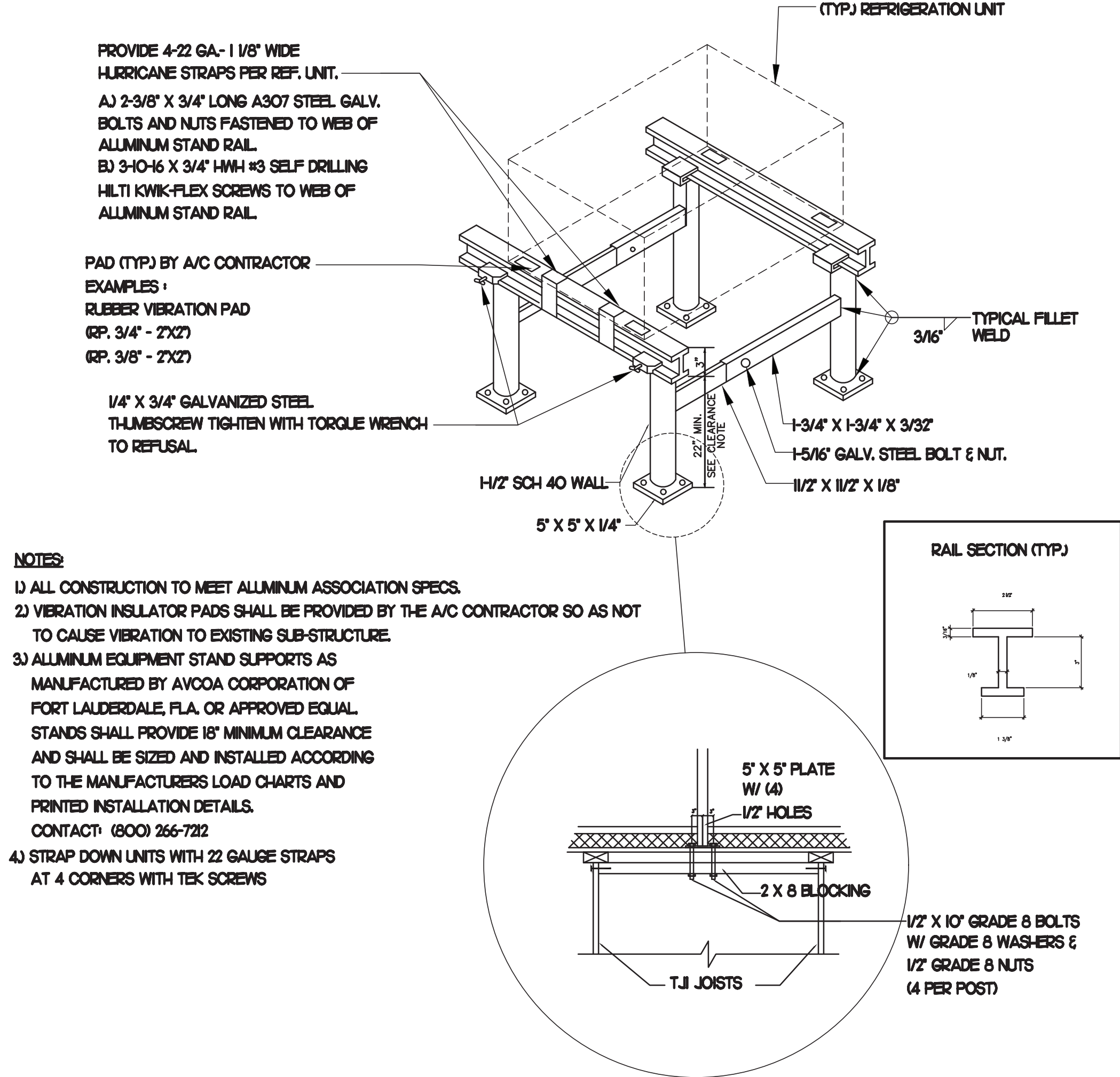
CONSULTANT PROJECT # 2020.0756
 DATE 12/2021
 DRAWN BY CH
 CHECKED BY DAK
 Information contained on this drawing and in all digital files produced for above named project may not be reproduced or transmitted in any form or by any means, electronic, mechanical, photocopying, recording, or by any information storage and retrieval system, without the prior written consent of the project sponsor.
 SHEET MECHANICAL SCHEDULES
 SHEET NUMBER
M3.1



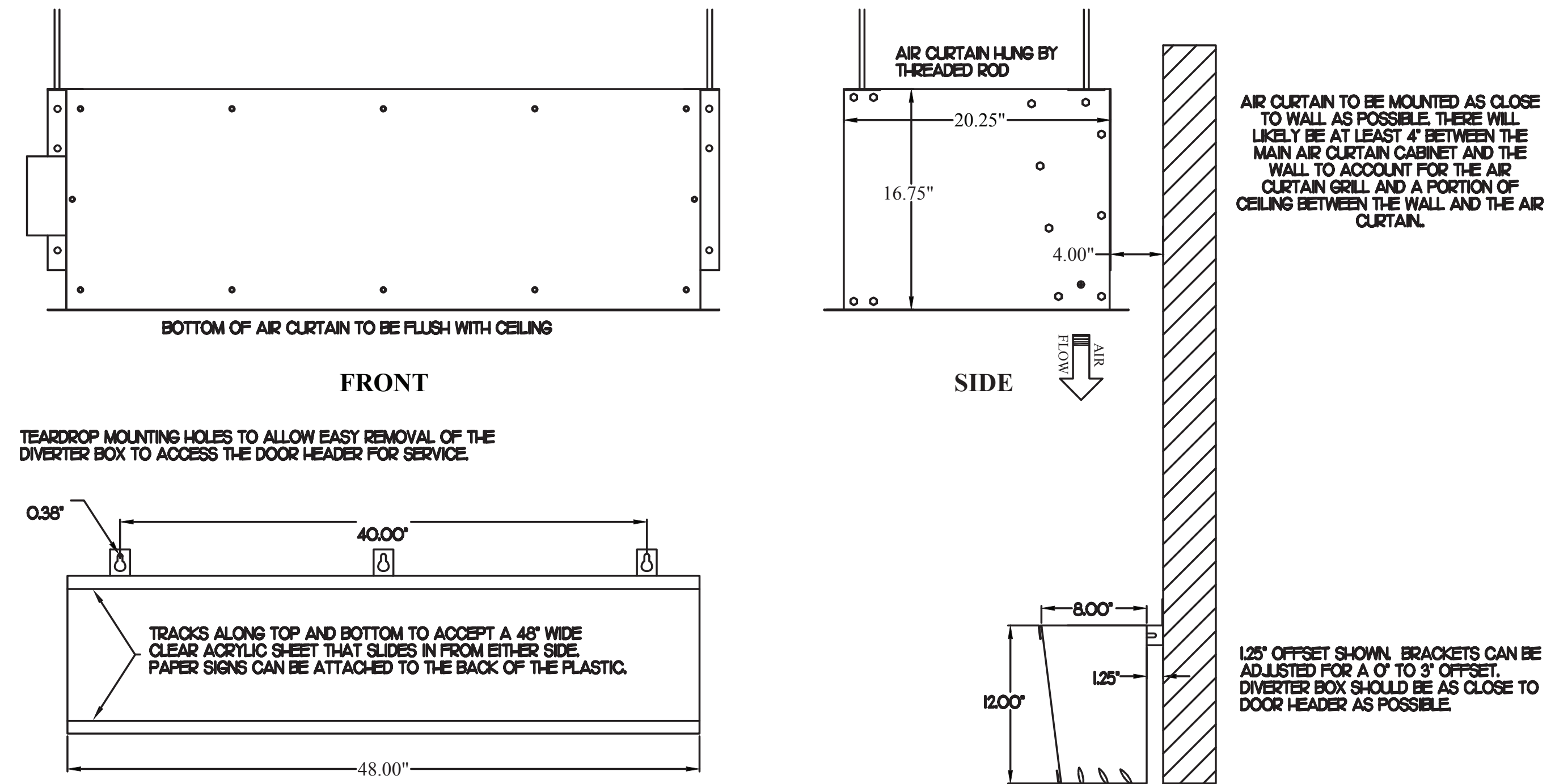
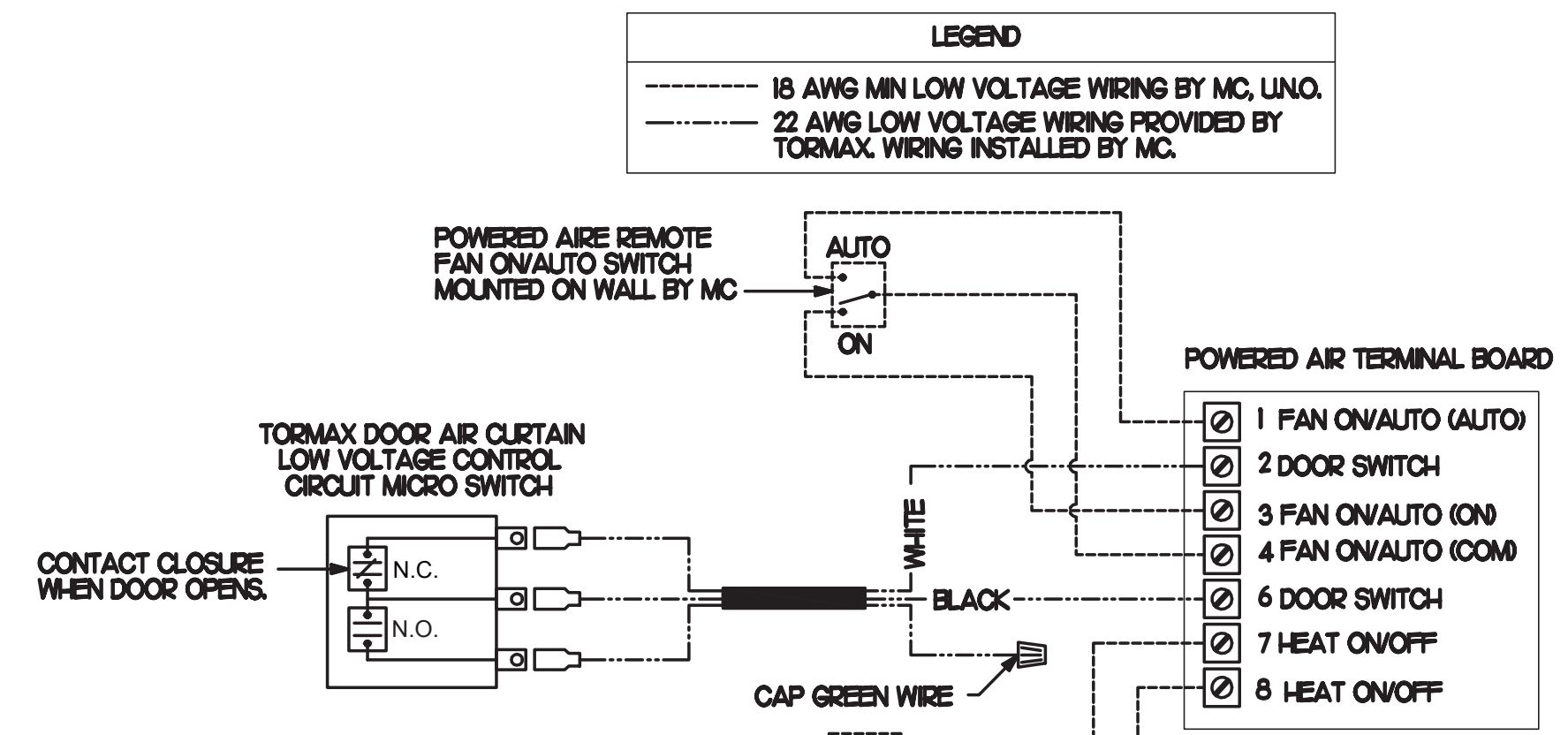
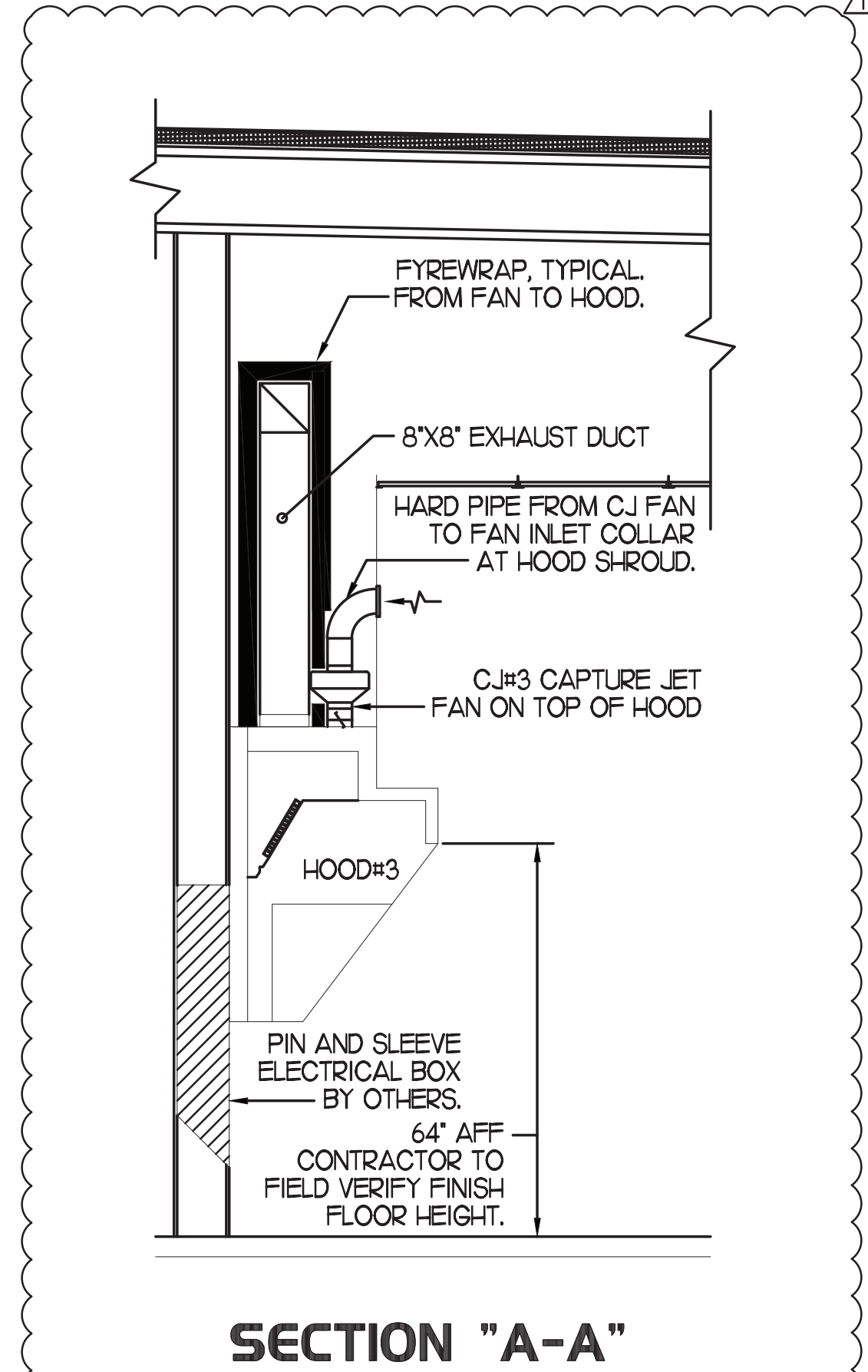
CHICK-FIL-A HAS A NATIONAL ACCOUNT WITH TOM BARROW COMPANY FOR THE JER-AIR START COLLARS FOR BOTH WITH AND WITHOUT A MANUAL BALANCING DAMPER. THE MECHANICAL CONTRACTOR IS REQUIRED TO PURCHASE THE JER-AIR START COLLARS DIRECTLY FROM TOM BARROW COMPANY. CONTACT MR. SCOTT GEORGE AT 404-351-0100 FOR PRICING AND AVAILABILITY. JER-AIR START COLLARS NOT PURCHASED THRU TOM BARROW COMPANY WILL NOT BE ACCEPTED.



CLEARANCE NOTE:
CONTRACTOR TO VERIFY THICKNESS OF ROOF ASSEMBLY. IF CLEARANCE REQUIRED FROM BOTTOM OF SUPPORT RACK STRUCTURAL MEMBERS TO TOP OF ROOF ASSEMBLY, IF ANY PIECE OF EQUIPMENT MOUNTED ON RACK EXCEEDS 36" IN THE LATERALLY MOUNTED DIMENSION, THE CLEARANCE NEEDS TO BE INCREASED TO 24".



- NOTES:**
- 1) ALL CONSTRUCTION TO MEET ALUMINUM ASSOCIATION SPECS.
 - 2) VIBRATION INSULATOR PADS SHALL BE PROVIDED BY THE A/C CONTRACTOR SO AS NOT TO CAUSE VIBRATION TO EXISTING SUB-STRUCTURE.
 - 3) ALUMINUM EQUIPMENT STAND SUPPORTS AS MANUFACTURED BY AVCOA CORPORATION OF FORT LAUDERDALE, FLA. OR APPROVED EQUAL. STANDS SHALL PROVIDE 18" MINIMUM CLEARANCE AND SHALL BE SIZED AND INSTALLED ACCORDING TO THE MANUFACTURER'S LOAD CHARTS AND PRINTED INSTALLATION DETAILS. CONTACT: (800) 266-7322
 - 4) STRAP DOWN UNITS WITH 22 GAUGE STRAPS AT 4 CORNERS WITH TEK SCREWS



Chick-fil-A

Chick-fil-A
5200 Buffington Road
Atlanta, Georgia
30349-2998

INTERPLAN
INTERPLAN LLC
AR0011595
CA 8660
ARCHITECTURE
ENGINEERING
PERMITTING

220 E. CENTRAL PKWY, STE 4000
ALBANY, GEORGIA 31707
407.645.5008



CHICK-FIL-A
SPRINGHURST
10501 Westport Rd.
Louisville
Kentucky, 40241

FSU#01668

BUILDING TYPE / SIZE: S04-152
RELEASE: 12/2021
PRINTED FOR: CH
Project Status

NO.	DATE	DESCRIPTION
1	12/2021	OPERATOR REQUESTS

FOR CONSTRUCTION
CONSULTANT PROJECT # 2020.0756
DATE 12/2021
DRAWN BY CH
CHECKED BY DAK
Information contained on this drawing and in all digital files produced for above project may not be reproduced in any manner without express written or verbal consent from authorized project representatives.
SHEET MECHANICAL DETAILS
SHEET NUMBER
M4.1

