

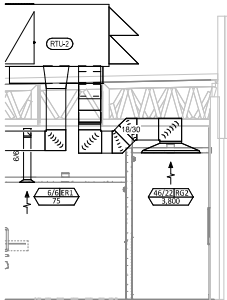


**HVAC PLAN NOTES**

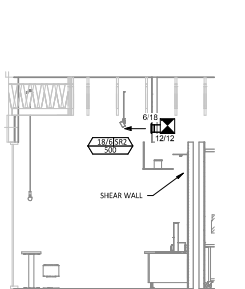
- SEE ARCHITECTURAL REFLECTED CEILING PLAN FOR CEILING MOUNTED EQUIPMENT LOCATION. TYPICAL.
- PAINT DUCTWORK VISIBLE THROUGH DINING ROOM SUPPLY REGISTERS BLACK. TYPICAL.
- PENETRATIONS THROUGH SHEAR WALL SHALL BE LIMITED TO 10" DIAMETER (OR A GROUP OF PENETRATIONS ALL CONTAINED WITHIN 10" DIAMETER). IF LARGER PENETRATIONS OR GROUPS OF PENETRATIONS ARE REQUIRED COORDINATE WITH STRUCTURAL ENGINEER FOR APPROPRIATE BRACING. SEE STRUCTURAL DRAWINGS FOR SHEAR WALL LOCATION.
- 3/4" DUCT UP FOR TRANSITION TO RTU-1 RETURN CONNECTION IN ROOF CURB. RTU-1 SHALL HAVE AN INTEGRAL SMOKE DETECTOR MOUNTED IN THE RETURN AIR STREAM. INTERLOCK SMOKE DETECTOR TO RTU-1 OPERATION.
- 3/8" DUCT UP FOR TRANSITION TO RTU-2 RETURN CONNECTION IN ROOF CURB. RTU-2 SHALL HAVE AN INTEGRAL SMOKE DETECTOR MOUNTED IN THE RETURN AIR STREAM. INTERLOCK SMOKE DETECTOR TO RTU-2 OPERATION.
- 3/8" DUCT UP FROM BUILDING SUPPLY THROUGH ROOF. TRANSITION TO RTU-1 SUPPLY CONNECTION IN ROOF CURB.
- 3/8" DUCT UP FROM BUILDING SUPPLY TO RTU-2 SUPPLY CONNECTION. TRANSITION IN ROOF CURB.
- 1 1/4" DUCT UP THROUGH ROOF. TRANSITION TO RTU-1 SUPPLY CONNECTION IN ROOF CURB.
- 1 1/2" DUCT UP FROM HOOD THROUGH ROOF TO EF-1 COMPLIANT WITH NFPA 96. PROVIDE RADIUS AT ELBOWS WITH AN INSIDE RADIUS OF 6.5W AT ELBOWS IN GREASE DUCT.
- 8/6 DUCT UP THROUGH ROOF TO EF-2.
- 28/6 DUCT DOWN TO MAKEUP AIR PSP DUCT CONNECTION. TRANSITION TO SUPPLY PLENUM OPENING SIZE. TYPICAL FOR 3.
- 8" DIA. DUCT DOWN TO AC PSP DUCT CONNECTION. TRANSITION TO SUPPLY PLENUM OPENING SIZE. TYPICAL. CAP UNUSED DUCT CONNECTIONS.
- INSTALL SINGLE-GANG VERTICAL J-BOX FOR GRIDPOINT THERMOSTATS FURNISHED BY TENS FOR RTU-1 AND RTU-2 AT THIS LOCATION AT 48" AFF. COORDINATE WITH ELECTRICAL SWITCHING IN THIS AREA. PROVIDE WIRING AS SHOWN IN DETAIL 8/E710.
- INSTALL GRIDPOINT ZONE SENSOR MODULE FURNISHED BY TENS FOR RTU-1 AT THIS LOCATION 72" AFF DIRECTLY TO WALL (NO JUNCTION BOX). COORDINATE LOCATION WITH EQUIPMENT. PROVIDE WIRING AS SHOWN IN DETAIL 8/E710.
- INSTALL GRIDPOINT ZONE SENSOR MODULE FURNISHED BY TENS FOR RTU-2 AT THIS LOCATION 66" AFF DIRECTLY TO WALL (NO JUNCTION BOX). COORDINATE LOCATION WITH EQUIPMENT. PROVIDE WIRING AS SHOWN IN DETAIL 8/E710.
- INSTALL GRIDPOINT SUPPLY PROBE FURNISHED BY TENS FOR RTU-1 IN THE SUPPLY DUCTWORK UPSTREAM FROM THE FIRST BRANCH CONNECTION. PROVIDE WIRING AS SHOWN IN DETAIL 8/E710.
- INSTALL GRIDPOINT SUPPLY PROBE FURNISHED BY TENS FOR RTU-2 IN THE SUPPLY DUCTWORK UPSTREAM FROM THE FIRST BRANCH CONNECTION. PROVIDE WIRING AS SHOWN IN DETAIL 8/E710.
- INSTALL REMOTE TEMPERATURE SENSOR FOR HOOD HD-1 AT THIS LOCATION 72" AFF. COORDINATE LOCATION WITH EQUIPMENT. PROVIDE (2) #18 G. THERMISTOR CABLE FROM TEMPERATURE SENSOR TO HOOD CONTROL PANEL.
- INSTALL KITCHEN HOOD, HD-1. SUPPORT HOOD PER MANUFACTURER'S INSTALLATION INSTRUCTIONS AND AS DETAILED IN THE ARCHITECTURAL AND STRUCTURAL DRAWINGS. INSTALL HOOD ACCORDING TO THE REQUIREMENTS OF LISTING, IN COMPLIANCE WITH NFPA-96, THE BUILDING CODE, AND AUTHORITIES HAVING JURISDICTION. HOOD SHALL HAVE AN INTEGRAL DUCT COLLAR TEMPERATURE SENSOR TO AUTOMATICALLY ENERGIZE THE EXHAUST AND MAKEUP AIR FANS IF COOKING TEMPERATURES ARE DETECTED. EXHAUST DUCT SYSTEM TO BE WELDED OR FACTORY-MANUFACTURED WATER AND AIR TIGHT. INSTALL CLEANOUTS PER CODE AND AS SHOWN. INSTALL HOOD PER DETAILS 2, 4, AND 9/M700. CHIPTOLE WILL PROVIDE AN INDEPENDENT TESTING AGENCY FOR TESTING THE INTEGRITY OF THE GREASE DUCT SYSTEM.

**HVAC PLAN NOTES**

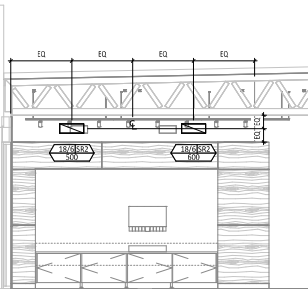
- INSTALL REMOTE CONDENSING UNIT FOR WALK-IN COOLER ON ROOF AS DETAILED IN THE ARCHITECTURAL AND STRUCTURAL DRAWINGS. INSTALL REFRIGERANT LINE SET, THERMOSTATIC EXPANSION VALVE, SOLENOID VALVE, TEMPERATURE CONTROL, SIGHT GLASS, FILTER DRIER, PRESSURE CONTROL, LOW AMBIENT CONTROLS, AND WEATHERPROOF HOUSING. TRAP AND SLOPE REFRIGERANT LINES PER MANUFACTURER'S RECOMMENDATIONS. INSTALLATION SHALL COMPLY WITH ASHRAE/ANSI STANDARD 15. INSTALL THE REFRIGERANT LINE SET UNDER THE ROOF DECK TO WITHIN 3' OF THE CONDENSING UNIT. CUT 2-1/2" HOLE IN WALK-IN COOLER ROOF FOR REFRIGERANT LINE SET AND SEAL PER THE COOLER MANUFACTURER'S INSTALLATION INSTRUCTIONS AFTER LINE SET IS INSTALLED.
- INSTALL REMOTE CONDENSER FOR ICE MACHINE ON ROOF AS DETAILED IN THE ARCHITECTURAL AND STRUCTURAL DRAWINGS. INSTALL REFRIGERANT LINE SET, THERMOSTATIC EXPANSION VALVE, SOLENOID VALVE, TEMPERATURE CONTROL, SIGHT GLASS, FILTER DRIER, PRESSURE CONTROL, LOW AMBIENT CONTROLS, AND WEATHERPROOF HOUSING. TRAP AND SLOPE REFRIGERANT LINES PER MANUFACTURER'S RECOMMENDATIONS. SEAL PIPING PENETRATIONS THROUGH ROOF.
- INSTALLATION SHALL COMPLY WITH ASHRAE/ANSI STANDARD 15. INSTALL THE REFRIGERANT LINE SET UNDER THE ROOF DECK TO WITHIN 3' OF THE REMOTE CONDENSER. IF REFRIGERANT PIPING TO ICE MAKER IS EXPOSED TO PUBLIC VIEW CONCEAL WITHIN A STAINLESS STEEL SHROUD AS SHOWN IN THE ARCHITECTURAL DRAWINGS.
- INSTALL ROOFTOP EQUIPMENT PER MANUFACTURER'S INSTALLATION INSTRUCTIONS AND AS DETAILED IN THE ARCHITECTURAL AND STRUCTURAL DRAWINGS.
- INSTALL EXHAUST FAN EF-1 PER DETAIL 5/M700 AND AS DETAILED IN THE ARCHITECTURAL AND STRUCTURAL DRAWINGS. INSTALL GREASE WASH/DRAIN SYSTEM FURNISHED BY CHIPTOLE ON EXHAUST FAN, EF-1.
- PROVIDE SUPPLY DIFFUSER CONNECTION TO SUPPLY SYSTEM PER DETAIL 1/M700. TYPICAL.
- PROVIDE AUDIO-VISUAL REMOTE SMOKE DETECTOR ANNUNCIATOR WITH REMOTE KEY OPERATED RESET. WIRE A UNIT BACK TO EACH SMOKE DETECTOR. MOUNT UNIT 60" AFF. TYPICAL.
- INSTALL REME HALO AIR PURIFIER FURNISHED BY TUV IN RTU IN PER DETAIL 6/M700. SEE ELECTRICAL DRAWINGS FOR POWER CONNECTION INFORMATION. INSTALL UV WARNING STICKERS ON FACE OF ENCLOSURE PER DETAIL AND ON ANY RTU ACCESS DOORS THROUGH WHICH THE REME HALO WOULD BE VISIBLE IF OPENED.
- MAINTAIN 10' CLEARANCE BETWEEN WATER HEATER FLE TERMINATION AND OUTSIDE AIR INTAKE. MAINTAIN 6' CLEARANCE BETWEEN WATER HEATER COMBUSTION AIR INTAKE AND EXHAUST FAN EF-1 DISCHARGE. SEE PLUMBING DRAWINGS FOR MORE INFORMATION ON WATER HEATER FLE AND COMBUSTION AIR TERMINATIONS.
- ADJUST SUPPLY REGISTERS SO THAT SUPPLY AIR HITS WALL ON OPPOSITE SIDE OF ROOM AT APPROXIMATELY 7' AFF WITH NO DRAFTS FELT IN THE DINING ROOM.



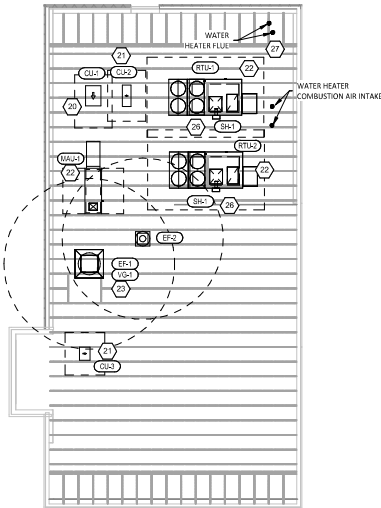
**HVAC DINING ROOM RETURN SECTION**  
1/4" = 1'-0"



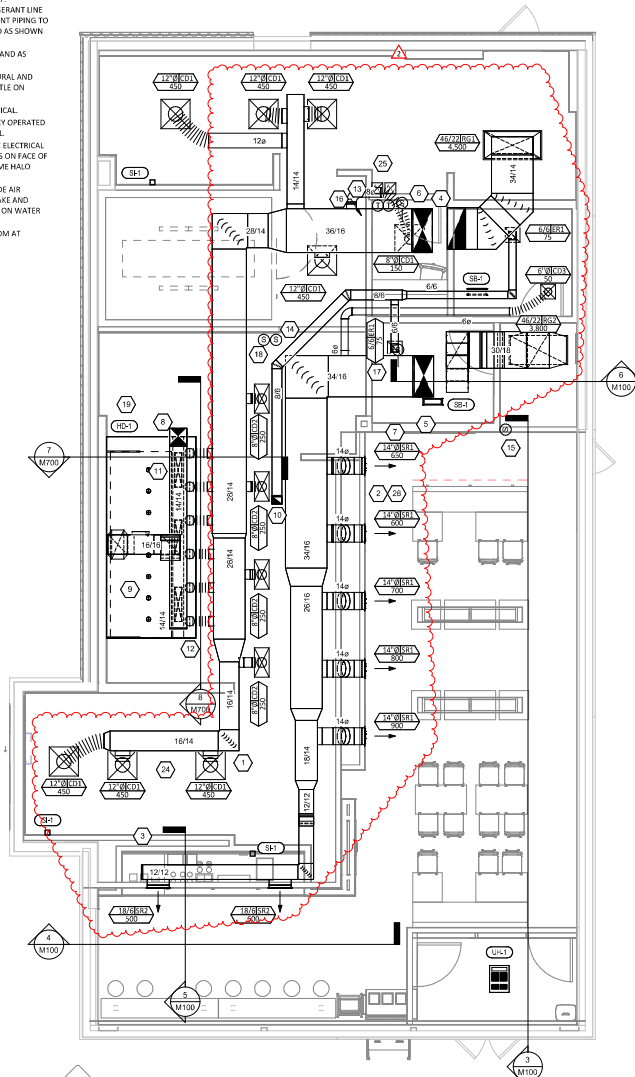
**HVAC DINING ROOM SECTION**  
1/4" = 1'-0"



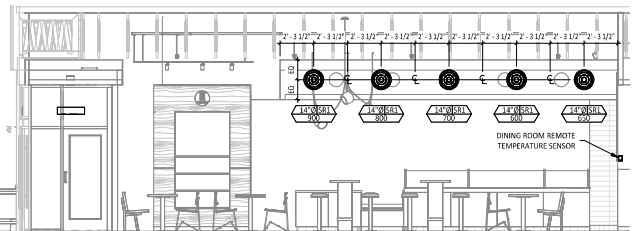
**HVAC DINING ROOM SECTION**  
1/4" = 1'-0"



**HVAC ROOF PLAN**  
1/8" = 1'-0"



**HVAC FLOOR PLAN**  
1/4" = 1'-0"



**HVAC DINING ROOM SECTION**  
1/4" = 1'-0"

4635 Trueman Blvd, Suite 250  
Hilliard, Ohio 43026  
Phone: (614) 751-9610  
Fax: (614) 552-5240  
Contact: Andy Janssik  
(614) 328-2028  
ajanssik@nationalengineering.com

**FOR CONSTRUCTION**

CHIPTOLE MCKEAN GRILL, INC.  
1610 E. JACKSON  
MACOMB, IL 61455

STORE NO.: 5427  
MACOMB  
1610 E. JACKSON  
MACOMB, IL 61455

Issue/Revision	Date	Description
Issue/Revision	07.10.2024	PERMIT SET
	09.03.2024	BID SET
	02.07.2025	CONSTRUCTION SET
Revision	02.07.2025	08 UPDATES

Drawn: [Blank] Checked: [Blank]  
All: [Blank]

Project No.: 2401083

Contract: HVAC PLAN

**M100**

UNIT HEATER SCHEDULE									
TAG	DESCRIPTION	MOUNTING	ELECTRICAL	FURNISHED	INSTALLED	BASIS FOR DESIGN		REMARKS	
UNIT	CEILING-MOUNTED UNIT HEATER	CEILING	3 KVA	V/P/H	BY	BY	MANUFACTURER	MODEL	
UH-1	CEILING-MOUNTED UNIT HEATER	CEILING	3 KVA	208/1/50	GC	GC	INDECO	93100400V	FURNISHED WITH WHITE FINISH DISCONNECT SWITCH, AND BUILT-IN TAMPERPROOF THERMOSTAT FOR RECESSED MOUNTING

SANITIZING EQUIPMENT SCHEDULE									
TAG	COUNT	DESCRIPTION	FURNISHED BY	INSTALLED BY	BASIS FOR DESIGN		REMARKS		
					MANUFACTURER	MODEL			
SP-1	2	BATHROOM AIR PURIFICATION UNIT	TUV	GC	RGF ENVIRONMENTAL GROUP	BRU ASSEMBLY	SEE ELECTRICAL SHEETS FOR CONNECTION INFORMATION		
SH-1	2	HVAC AIR PURIFICATION UNIT	TUV	GC	RGF ENVIRONMENTAL GROUP	REME-HALD	SEE DETAIL 6/1000 FOR INSTALLATION INFORMATION.		
SI-1	3	ICE MACHINE TREATMENT SYSTEM	TUV	GC	RGF ENVIRONMENTAL GROUP	IMS-9-GA	SEE PLUMBING DRAWINGS FOR INSTALLATION INFORMATION.		

FAN SCHEDULE											
TAG	DESCRIPTION	AIRFLOW	E.S.P.	WEIGHT	ELECTRICAL		FURNISHED BY	INSTALLED BY	BASIS FOR DESIGN		REMARKS
					MOTOR POWER	V/P/H			MANUFACTURER	MODEL	
EF-1	UPBLAST UL762 EXHAUST FAN	2,500 CFM	1.20 in-wg	400 lb	2 hp	208/3/50	HS	GC	CAPTIVE-AIRE	DUS208A	DIRECT DRIVE UL762 UPBLAST EXHAUST FAN FURNISHED WITH WEATHERPROOF DISCONNECT AND VENTED ROOF CURB
EF-2	DOWNBLAST RESTROOM EXHAUST FAN	150 CFM	0.60 in-wg	100 lb	0.18 hp	120/1/60	HS	GC	CAPTIVE-AIRE	DR12HFA	DIRECT DRIVE DOWNBLAST RESTROOM EXHAUST FAN FURNISHED WITH INTEGRAL DISCONNECT, SPEED CONTROL, BACKDRAFT DAMPER, AND CURB

VIROGUARD SCHEDULE									
TAG	COUNT	DESCRIPTION	DUCT CONNECTION SIZE	FAN	FURNISHED BY	INSTALLED BY	BASIS FOR DESIGN		REMARKS
							MANUFACTURER	MODEL	
VG-1	1	VIROGUARD HOOD EXHAUST FAN ROOFTOP CONTAINMENT SYSTEM	16" X 16"	CAPTIVE-AIRE DUL180HFA	TDC	GC	ENVIRONMENTAL		

CONDENSING UNIT SCHEDULE														
TAG	DESCRIPTION	NOMINAL CAPACITY	NUMBER OF		REFRIGERANT	WEIGHT	ELECTRICAL		FURNISHED BY	INSTALLED BY	BASIS FOR DESIGN		REMARKS	
			COMPRESSORS	CIRCUITS	TYPE	CHARGE	MOCF	FLA	V/P/H			MANUFACTURER	MODEL	
CU-1	CONDENSING UNIT - WALK-IN COOLER		1	1	R-404A	10.4 lb	15 A	9 A	208/3/60	WCS	GC	HARFORD	KPL19ANZCP-3E	FURNISHED WITH WALK-IN COOLER
CU-2	REMOTE CONDENSER - LOW CAPACITY ICE MAKER		0	1	R-404A	11.46 lb			120/1/60	KES	GC	HOSHIZAKI	URC-3FZ	FURNISHED WITH ICE MAKER
CU-3	REMOTE CONDENSER - 300A MACHINE ICE MAKER		0	1	R-404A	3.86 lb			120/1/60	KES	GC	HOSHIZAKI	URC-3FZ	FURNISHED WITH ICE MAKER

MAKEUP AIR UNIT SCHEDULE														
TAG	DESCRIPTION	AIRFLOW	E.S.P.	HEATING		ELECTRICAL		FURNISHED BY	INSTALLED BY	BASIS FOR DESIGN		REMARKS		
				INPUT	OUTPUT	EAT	WEIGHT	MOTOR POWER	V/P/H					
MAU-1	DIRECT-FIRED MAKEUP AIR UNIT	1,300 CFM	0.50 in-wg	225,000 Btu/h	220,000 Btu/h	21 °F	650 lb	1 hp	208/3/60	HS	GC	CAPTIVE-AIRE	A1 @ 250-150	12.5.3 MAX TURN-DOWN. FURNISHED WITH DISCONNECT, ROOF CURB, SCREEN INTAKE, AND WASHABLE ALUMINUM FILTERS

KITCHEN HOOD SCHEDULE																					
TAG	DESCRIPTION	MAX COOKING TEMP.	AIRFLOW	E.S.P.	EXHAUST PLENUM					PERFORATED SUPPLY PLENUMS					NO. OF LIGHT FIXTURES	WEIGHT	FURNISHED BY	INSTALLED BY	BASIS FOR DESIGN		REMARKS
					NO.	WIDTH	LENGTH	LENGTH	WIDTH	LENGTH	WIDTH	LENGTH	NO.	WIDTH					LENGTH	NO.	
HD-1	TYPE I CANOPY HOOD WITH PERFORATED MAU AND AC SUPPLY PLENUMS	600 °F	2,550 CFM	0.97 in-wg	1	10"	2'-0"	12'-9"	4'-3"	13'-9"	1'-7"	1,300 CFM	3	6"	2'-4"	700 CFM	6	8"	524	ND-2-ACPSF-F	MATL: 18 GA. TYPE 430 SS. FURNISHED WITH VERTICAL END PANELS, VAPORPROOF INCANDESCENT LIGHT FIXTURES, 16" TALL H-SS FILTERS, INTEGRAL UTILITY CABINET, KITCHEN EXHAUST SUPPRESSOR SYSTEM, DUCT COLLAR TEMPERATURE SENSOR, PRE-WIRE PACKAGE, SPARE FIRE SYSTEM BRY CONTACT, AND 4-POLE 20A CONTACTOR.

ROOFTOP UNIT SCHEDULE																											
TAG	DESCRIPTION	NOMINAL CAPACITY	EER	AIRFLOW		NET COOLING CAPACITY				HEATING CAPACITY		NUMBER OF		REFRIGERANT		ELECTRICAL		FURNISHED BY	INSTALLED BY	BASIS FOR DESIGN		REMARKS					
				TOTAL	OA	SENSIBLE	DB	WB	COND. EAT	INPUT	OUTPUT	EAT	NO.	CIRCUITS	TYPE	CHARGE	WEIGHT			MOCF	FLA		V/P/H	MANUFACTURER	MODEL		
RTU-1	KITCHEN ROOFTOP UNIT	12.5 ton	12	5,000 CFM	500 CFM	0.80 in-wg	154 Btu/h	67 Btu/h	75 °F	68 °F	97 °F	180,000 Btu/h	144,000 Btu/h	60 °F	2	2	R-454B	15.5 lb	1,600 lb	90 A	77.4 A	208/3/60	HES	GC	YORK	KJ150	FURNISHED WITH COMP. ENTHALPHY ECON., BAROMETRIC RELIEF, RET. SMOKE DETECTOR W/ REMOTE KEYS ANNUNCIATOR/RESET, M.O.D., MEV-8 FILTERS, CURB, HAIL GUARD, TOOLLESS HINGED ACCESS PANELS, DISCONNECT, & UNIT MOUNTED CONVENIENCE RECEPTACLE
RTU-2	DINING ROOM ROOFTOP UNIT	12.5 ton	12	4,800 CFM	1,000 CFM	0.80 in-wg	157,000 Btu/h	88,000 Btu/h	77 °F	68 °F	97 °F	240,000 Btu/h	192,000 Btu/h	52 °F	2	2	R-454B	15.5 lb	1,600 lb	90 A	77.4 A	208/3/60	HES	GC	YORK	KJ150	FURNISHED WITH COMP. ENTHALPHY ECON., BAROMETRIC RELIEF, RET. SMOKE DETECTOR W/ REMOTE KEYS ANNUNCIATOR/RESET, M.O.D., MEV-8 FILTERS, CURB, HAIL GUARD, TOOLLESS HINGED ACCESS PANELS, DISCONNECT, & UNIT MOUNTED CONVENIENCE RECEPTACLE

CONTROL FUNCTIONS				
A.	THE MAIN COOKING EXHAUST FAN AND MAKE-UP AIR UNIT SHALL BE INTERLOCKED TO OPERATE TOGETHER. THIS CONTROL CIRCUIT IS ACTIVATED BY A SWITCH AND INCLUDES A FIRE PROTECTION DIVIDOR.			
B.	THE TEMPERATURE IN EACH ZONE IS CONTROLLED BY SPACE TEMPERATURE SENSORS CONNECTED TO THE THERMOSTATS LOCATED IN THE OFFICE. ALL ZONES SHALL OPERATE WITH CONTINUOUS FAN OPERATION DURING OCCUPIED TIMES AND INTERMITTENTLY AS NEEDED TO MAINTAIN SET POINTS DURING UNOCCUPIED TIMES. OUTSIDE AIR DAMPERS SHALL BE OPEN CONTINUOUSLY WHEN EITHER IN OCCUPIED MODE OR WHEN THE HOOD SYSTEM IS ON AND SHALL BE CLOSED DURING UNOCCUPIED PERIODS.			
C.	THE THERMOSTATS SHALL DETERMINE OCCUPIED/UNOCCUPIED STATUS BASED ON THE SCHEDULE IN THE ENERGY MANAGEMENT SYSTEM.			

AIR BALANCE SCHEDULE				
TAG	SUPPLY FLOW	RETURN FLOW	EXHAUST FLOW	SUBTOTAL
EF-1	0 CFM	0 CFM	2,550 CFM	-2,550 CFM
EF-2	0 CFM	0 CFM	150 CFM	-150 CFM
MAU-1	1,300 CFM	0 CFM	0 CFM	1,300 CFM
RTU-1	5,000 CFM	4,500 CFM	0 CFM	500 CFM
RTU-2	4,800 CFM	3,800 CFM	0 CFM	1,000 CFM
NET PRESSURIZATION				100 CFM

AIR TERMINAL SCHEDULE										
TAG	DESCRIPTION	FACE SIZE	MATERIAL	FINISH	MOUNTING	FURNISHED BY	INSTALLED BY	BASIS FOR DESIGN		NOTES
								MANUFACTURER	MODEL	
CD1	PERFORATED CEILING DIFFUSER	24" X 24"	ALUMINUM	WHITE	LAY-IN CEILING	GC	GC	NAILOR	4320A TYPE I	PROVIDE WITH INTEGRAL OBD
CD2	PERFORATED CEILING DIFFUSER	24" X 12"	ALUMINUM	WHITE	LAY-IN CEILING	GC	GC	NAILOR	4320A TYPE L	PROVIDE WITH INTEGRAL OBD. REMOVE 4-WAY DEFLECTORS
CD3	PERFORATED CEILING DIFFUSER	12" X 12"	ALUMINUM	WHITE	SURFACE MOUNT	GC	GC	NAILOR	4320A TYPE S	PROVIDE WITH INTEGRAL OBD
ER1	PERFORATED CEILING EXHAUST	12" X 12"	ALUMINUM	WHITE	SURFACE MOUNT	GC	GC	NAILOR	4330R TYPE S	PROVIDE INTEGRAL OBD
RS1	PERFORATED CEILING RETURN	48" X 24"	ALUMINUM	WHITE	LAY-IN CEILING	GC	GC	NAILOR	4330R TYPE L	
RS2	PERFORATED CEILING RETURN	48" X 24"	ALUMINUM	WHITE	SURFACE MOUNT	GC	GC	NAILOR	4330R TYPE S	
SR1	ADJUSTABLE TURBO NOZZLE	SEE NECK SIZE	ALUMINUM	WHITE	WALL	GC	GC	AIR CONCEPTS	ANR-14	PROVIDE WITH CONCEALED MOUNTING AND FACE ACCESSIBLE OBD
SR2	DOUBLE DEFLECTION SUPPLY REGISTER	SEE NECK SIZE	ALUMINUM	WHITE	WALL	GC	GC	NAILOR	510H	PROVIDE WITH INTEGRAL OBD

**NATIONAL**  
 4635 Trueman Blvd, Suite 250  
 Hilliard, Ohio 43026  
 Phone: (614) 751-9610  
 Fax: (614) 552-5240  
 Contact: Andy Janosik  
 (614) 328-2028  
 ajanosik@nationalengineering.com

FOR  
CONSTRUCTION

Copyright 2025  
 THE SERVICES ARE A STATEMENT OF SERVICE  
 AND AS SUCH REMAINS THE PROPERTY OF  
 CHIPOTLE MEXICAN GRILL, INC. PERMISSION FOR  
 USE OF THE DOCUMENT IS LIMITED AND CAN BE  
 EXTENDED ONLY BY WRITTEN AGREEMENT WITH  
 CHIPOTLE MEXICAN GRILL, INC.



CHIPOTLE MEXICAN GRILL, INC.  
 PO BOX 183566  
 COLUMBUS, OH 43218-2566  
 TELEPHONE: 614.392.2400  
 INTERNET: WWW.CHIPOTLE.COM

STORE NO.: 5427  
 MACOMB  
 1610 E JACKSON  
 MACOMB, IL 61455

Issue/Revised:	By:	Checked:
07.10.2024	PERMIT SET	
05.03.2024	BID SET	
02.07.2024	CONSTRUCTION SET	

Revisions:  
 2 02.07.2025 DB UPDATES

Drawn: \_\_\_\_\_  
 Checked: \_\_\_\_\_  
 AJJ AJJ

Project No:  
 2401083

Contract:  
 HVAC SCHEDULES

M600



**SECTION 1505S - COMMON PIPING REQUIREMENTS**

- PART 1 - GENERAL**  
**1. SECTION REQUIREMENTS**  
 A. Comply with the requirements of the Building Code and the local authority having jurisdiction.  
**PART 2 - PRODUCTS**  
**2.1 SUPPORTING DEVICES**  
 A. Hanger and Pipe Attachments: Factory fabricated with galvanized coatings; nonmetallic coated for hangers in direct contact with copper tubing.  
 B. Building Attachments: Powder actuated type, drive pin attachments with pullout and shear capacities appropriate for supported loads and building materials; UL listing and FM approved for fire protection systems.  
 C. Mechanical Anchor Fasteners: Insert-type attachments with pullout and shear capacities appropriate for supported loads and building materials; UL listing and FM approved for fire protection systems.  
**PART 3 - EXECUTION**  
**3.1 INSTALLATION**  
 A. Install piping free of sag and bends.  
 B. Install fittings for changes in direction and branch connections.  
 C. Install sleeves for pipes passing through concrete and masonry walls, gypsum board partitions, and concrete floor and roof slabs.  
 D. Exterior Wall, Pipe Penetrations: Mechanical sleeve seals installed in steel or cast iron pipes for wall sleeves.  
 E. Fire Barrier Penetrations: Seal pipe penetrations with through-penetration firestop systems.  
 F. Install unions adjacent to each valve and at final connection to each piece of equipment.  
 G. Install dielectric unions and flanges to connect piping materials of dissimilar metals in gas piping.  
 H. Install dielectric coupling and insulate fittings to connect piping materials of dissimilar metals in water piping.  
 I. Provide full ring escutcheons as plumbing penetrations through walls or ceilings. Tightly seal escutcheons to the adjacent surface.  
**3.2 HANGERS AND SUPPORTS**  
 A. Install building attachments within concrete or structural steel. Install additional attachments at concentrated loads, including valves, flanges, joints, strainers, expansion joints, and at changes in direction of piping.  
 B. Install powder actuated drive pin fasteners in concrete after concrete is cured. Do not use in lightweight concrete or in slabs less than 4 inches thick.  
 C. Install mechanical anchor fasteners in concrete after concrete is cured. Do not use in lightweight concrete or in slabs less than 4 inches thick.  
 D. Support fire protection system piping independent of other piping.  
 E. Load Distribution: Install hangers and supports to piping live and dead loading and stresses from movement will not be transmitted to connected equipment.  
**END OF SECTION 1505S**

**SECTION 15080 - MECHANICAL INSULATION**

- PART 1 - GENERAL**  
**1. SECTION REQUIREMENTS**  
 A. Submittals: None.  
 B. Quality Assurance: Label with maximum flame-spread rating of 25 and maximum smoke developing rating of 50 according to ASTM E 84.  
**PART 2 - PRODUCTS**  
**2.1 PIPE INSULATION**  
 A. Performed Glass Fiber Pipe Insulation: ASTM C 547, Class I, with factory applied, all purpose, vapor retarder jacket.  
 B. Polyethylene Pipe Insulation: Unidirectional polyethylene, performed pipe insulation. Comply with ASTM C 334, Type I, except for density.  
**PART 3 - EXECUTION**  
**3.1 INSTALLATION**  
 A. Install vapor barriers on insulated pipes with surface operating temperatures below 60 deg F.  
 B. Insulate fittings, valves, and specialties.  
 C. Seal vapor barrier penetrations for hangers, supports, anchors, and other projections.  
 D. Coat glass fiber pipe insulation ends with vapor barrier coating.  
 E. Roof Penetrations: Apply insulation for interior applications to a point even with the top of the roof flashing.  
 F. Exterior Wall Penetrations: For penetrations of below grade exterior walls, terminate insulation flush with mechanical sleeve seal.  
 G. Interior Walls and Partitions Penetrations: Apply insulation continuously through walls and partitions, except fire rated walls and partitions.  
 H. Fire Rated Walls and Partitions Penetrations: Terminate insulation at penetrations through fire rated walls and partitions. Seal around penetration with through penetration firestop systems.  
 I. Floor Penetrations: Terminate insulation at the underside of the floor assembly and at the floor support at top of floor. Seal around penetration with through penetration firestop systems.  
 J. Glass Fiber Insulation Installation: Bond insulation to pipe with adhesive. Seal seams and joints with vapor barrier compound.  
 K. Interior Piping System Applications: Insulate the following piping systems:  
 1. Domestic cold, hot, and recirculation water pipes.  
 2. Exposed sanitary drains and water supply pipes for public hand sinks.  
 3. Refrigerant piping.  
 L. Do not apply insulation to the following systems, materials, and equipment:  
 1. Fixable connections.  
 2. Fire protection piping systems.  
 3. Sanitary drainages and vent piping.  
 4. Chrome plated pipes and fittings, except for plumbing fixtures for the disabled.  
 5. Piping specialties, including air chambers, unions, strainers, check valves, plug valves, and flow regulators.  
 M. Pipe Insulation Thickness Application Schedule: Insulate piping with the following materials and thicknesses:  
 1. Domestic Hot and Recirculation water lines: 1-inch preformed glass fiber pipe insulation.  
 2. Domestic Cold Water: 1/2-inch preformed glass fiber pipe insulation.  
 3. P-Trap and Toilet Supplies for public hand sinks: Non-compliant pre-formed insulation.  
**END OF SECTION 15080**

**SECTION 15110 - VALVES**

- PART 1 - GENERAL (Not Applicable)**  
**PART 2 - PRODUCTS**  
**2.1 GENERAL DUTY VALVES**  
 A. End Connections: Threads shall comply with ANSI B1.20.1. Flanges shall comply with ANSI B16.1 for cast iron valves and ANSI B16.24 for bronze valves. Solder joint connections shall comply with ANSI B16.18.  
 B. Ball Valves: Rated for 150 psig WOG; bronze body, with straightaway pattern, square head, and threaded ends.  
 C. Plug Valves: Rated at 150 psig WOG; bronze body, with straightaway pattern, square head, and threaded ends.  
 D. Swing Check Valves: Class 125, cast bronze body and cap; with horizontal swing, Y pattern, and bronze disc.  
 E. Valves for Copper Tube: Threaded ends, except provide threaded ends for heating hot water and low pressure steam service.  
 F. Valves for Steel Pipe: Threaded ends.  
**PART 3 - EXECUTION**  
**3.1 INSTALLATION**  
 A. Use gate and ball valves for shutoff duty and ball for throttling duty.  
 B. Locate valves for easy access and provide support where necessary.  
 C. Install accessible valves for each fixture and item of equipment.  
 D. Install valves in horizontal piping with stem at or above center of pipe.  
 E. Install valves in position to allow full stem movement.  
 F. Install check valves for proper direction of flow in horizontal position with hinge pin level.  
**END OF SECTION 15110**

**SECTION 15140 - DOMESTIC WATER PIPING**

- PART 1 - GENERAL**  
**1. SECTION REQUIREMENTS**  
 A. Performance Requirements: Unless otherwise indicated minimum pressure requirements for water piping are as follows:  
 1. Service Entrance Piping: 100 psig  
 2. Domestic Water Piping: 80 psig  
 B. Comply with NSF 14 "Plastic Piping Components and Materials."  
 C. Comply with NSF 61 "Drinking Water System Components - Health Effects."  
**PART 2 - PRODUCTS**  
**2.1 PIPES AND TUBES (See Material Schedule on sheet R101 for where those materials are to be used)**  
 A. Hard Copper Tubing: ASTM B 128, Types 1 and 2, water tube, drawn temper.  
 B. PVC Plastic Water Pipe: ASTM D 1785, Schedule 40, plain ends.  
**2.2 FITTINGS**  
 A. Wrought Copper, Solder Joint Pressure Fittings: ASME B 16.22.  
 B. Cast Copper Alloy, Solder Joint Pressure Fittings: ASME B 16.18.  
 C. Bronze Flanges: ASME B 16.24, Classes 150 and 300.  
 D. Copper Unions: ASME B 16.18, cast copper alloy body, hexagonal stock, with ball and socket joint, metal to metal seating surfaces, and solder joint, threaded, or solder joint and threaded ends. Threads complying with ASME B 1.20.1.  
**2.3 JOINING MATERIALS**  
 A. Solder: Silver Metal: ASTM B 32, lead free.  
 B. Braising Filler Metals: AWS-B5.8, alloy to suit system requirements.  
 C. Solvent Cements: As recommended by manufacturer.  
 D. Plastic Pipe Seals: ASTM J 477, elastomeric gasket.  
**PART 3 - EXECUTION**  
**3.1 VALVE APPLICATIONS**  
 A. Install gate valves close to main on each branch and riser serving two or more plumbing fixtures or equipment connections and where indicated.  
 B. Install gate or ball valves on inlet to each plumbing equipment item, on each supply to each plumbing fixture not having traps as indicated, and elsewhere as indicated.  
 C. Install drain valve at base of each riser, at low points of horizontal runs, and where required to drain water distribution piping system.  
 D. Install swing check valves discharge side of each pump and elsewhere as indicated.  
 E. Install ball valves in each hot water circulating loop and discharge side of each pump.  
**3.2 PIPING INSTALLATIONS**  
 A. Install hangers and supports at intervals indicated in the applicable plumbing code and as recommended by pipe manufacturer.  
 B. Support vertical piping at each floor.  
**3.3 INSPECTING AND CLEANING**  
 A. Inspect and test piping systems following procedures of authorities having jurisdiction.  
 B. Clean and disinfect water distribution piping following procedures of authorities having jurisdiction.  
**END OF SECTION 15140**

**SECTION 15150 - SANITARY WASTE AND VENT PIPING**

- PART 1 - GENERAL**  
**1. SECTION REQUIREMENTS**  
 A. Minimum Pressure Requirement for Soil, Waste and Vent: 10 feet head.  
 B. Comply with NSF 14 "Plastic Piping Components and Related Materials".  
**PART 2 - PRODUCTS**  
**2.1 PIPES AND TUBES**  
 A. PVC Plastic, DWV Pipe: ASTM D 2665, Schedule 40, plain ends.  
**2.2 FITTINGS**  
 A. PVC Plastic, DWV Pipe Fittings: ASTM D 2665, made to ASTM D 3331; socket type; drain, waste, and vent pipe patterns.  
**PART 3 - EXECUTION**  
**3.1 PIPING INSTALLATION**  
 A. Install (cleanout and extension to grade at connection of building sanitary drain and building sanitary sewer.  
 B. Locate drainage piping smooths as close as possible to bottom of floor slabs supporting fixtures or drains.  
**3.2 INSPECTION**  
 A. Inspect and test piping systems following procedures of authorities having jurisdiction.  
**END OF SECTION 15150**

**SECTION 15198 - NATURAL GAS PIPING**

- PART 1 - GENERAL**  
**1. SECTION REQUIREMENTS**  
 A. Quality Assurance: Comply with NFPA 54 and the Plumbing Code.  
**PART 2 - PRODUCTS**  
**2.1 PIPE, TUBE, AND SPECIALTIES**  
 A. Steel Pipe: ASTM A 53, Type K (Seamless), Grade B, Schedule 40, plain ends.  
 B. Malleable Iron Threaded Fittings: ASME B16.3, Class 150.  
 C. Manual Valves: Comply with standards listed or, if appropriate, to ANSI Z21.15.  
 D. Gas Stops: AGA certified, bronze body, plug type with bronze plug, for 2-psig or less natural gas. Include AGA stamp, flat or square head or lever handle, and threaded ends complying with ASME B1.20.1.  
 E. Gas Valves: 150-psig WOG, cast-iron or bronze body, bronze plug, straightaway pattern, square head, tapered plug type.  
 F. Gas Pressure Regulators: ANSI Z21.18, angle stage, steel jacketed, corrosion resistant pressure regulators. Include atmospheric vent, elevation compensator, regulator pressure ratings, inlet and outlet pressures, and flow volume in cubic feet per hour of natural gas at specific gravity are as indicated.  
 G. Line Gas Pressure Regulators: Inlet pressure rating not less than system pressure.  
 H. Flexible Connectors: ANSI Z21.26, copper alloy.  
 I. Strainers: Bronze body, Y-pattern, full size of connecting pipe. Include stainless steel screens with 3/64 inch perforations, and a pressure rating of 125-psig minimum. WOG working pressure.  
**PART 3 - EXECUTION**  
**3.1 INSTALLATION**  
 A. Close equipment shutoff valves before turning off gas to premises or section of piping. Perform leakage test as specified to determine that all equipment is turned off in affected piping section.  
 B. Install shutoff valve, downstream from gas meter, outside building at gas service entrance.  
 C. Install gas stops for shutoff to appliances with NPS 2" or smaller low pressure gas supply.  
 D. Drips and Sediment Traps: Install drips at points where condensate may collect. Include outlets of gas meters. Locate where readily accessible to permit cleaning and emptying. Do not install where condensate would be subject to freezing.  
 E. Install gas piping at uniform slope of 1/4 percent upward toward risers.  
 F. Connect branch piping from top or side of horizontal piping.  
 G. Install strainers on supply side of each control valve, gas pressure regulator, solenoid valve, and elsewhere as indicated.  
 H. Install valves in accessible locations, protected from damage.  
 I. Install gas valve upstream from each gas pressure regulator. Where two gas pressure regulators are installed in series, valve is not required at second regulator.  
 J. Connect gas piping to equipment and appliances with shutoff valves and unions. Install gas valve upstream from and within 36 inches of each appliance using gas. Install union or flanged connection downstream from valve.  
 K. Inspect, test, and purge piping according to NFPA 54, Part 4, "Gas Piping Inspection, Testing, and Purging," and requirements of authorities having jurisdiction.  
**END OF SECTION 15198**

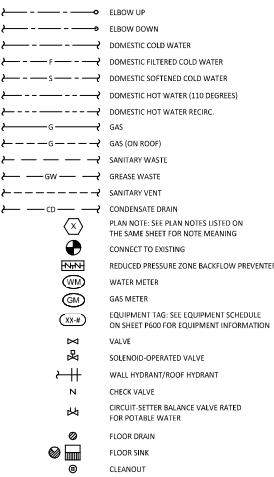
**SECTION 15410 - PLUMBING FIXTURES**

- PART 1 - GENERAL**  
**1. SECTION REQUIREMENTS**  
 Submittals: None.  
 A. Comply with requirements of Public Law 102-486, "Energy Policy Act", regarding water flow rate and water consumption of plumbing fixtures.  
 B. Comply with applicable standards below:  
 1. Enameled, Cast Iron Fixtures: ASME A112.19.1M.  
 2. National Sanitation Foundation Contractors: NSF2.  
**PART 2 - PRODUCTS**  
**2.1 PIPES AND TUBES (See Material Schedule on sheet R101 for where those materials are to be used)**  
 A. Hard Copper Tubing: ASTM B 128, Types 1 and 2, water tube, drawn temper.  
 B. Vitreous Enamelled Fixtures: ASME A112.19.1M.  
 C. Slip Resistant Bathing Surfaces: ASTM F 462.  
**2.2 FITTINGS**  
 A. Hard Copper Tubing: ASTM B 128, Types 1 and 2, water tube, drawn temper.  
 B. Vitreous Enamelled Fixtures: ASME A112.19.1M.  
**PART 3 - EXECUTION**  
**3.1 INSTALLATION**  
 A. Install fixtures with flanges and gasket seals.  
 B. Install flushometer valves for accessible water closets and urinals with handle mounted on wide side of compartment. Install other actuators in locations that are easy for the disabled to reach.  
 C. Fasten wall hanging plumbing fixtures securely to supports attached to building substrate where supports are specified, and to building wall construction where no support is indicated.  
 D. Fasten floor mounted fixtures to substrate. With fixtures having holes for securing fixture to wall construction, fasten to reinforcement built into walls.  
 E. Fasten wall mounted fittings to reinforcement built into walls.  
 F. Fasten counter mounted plumbing fixtures to casework.  
 G. Install individual supply inlets, supply stops, supply risers, and tubular brass traps with cleanouts at fixture.  
 H. Set mop basins in leveling bed of cement grout.  
 I. Install individual supply inlets, supply stops, supply risers, and tubular brass traps with cleanouts at fixture.  
 J. Install water supply stop valves in accessible locations.  
 K. Install traps on fixture outlets. Omit traps on fixtures having integral traps. Omit traps on indirect wastes, unless otherwise indicated or required by the Authority Having Jurisdiction.  
 L. Install full-ring escutcheons at wall, floor, and ceiling penetrations in exposed, finished locations within cabinets and millwork. Use deep pattern escutcheons where required to conceal protruding pipe fittings.  
 M. Install piping connections between plumbing fixtures and pipe systems and plumbing equipment. Install insulation on supplies and drains of fixtures for the disabled.  
 N. Ground equipment. Tighten electrical connectors and terminals according to UL 486A and UL 486B.  
**END OF SECTION 15410**

**SECTION 15554 - FLUES AND VENTS**

- PART 1 - GENERAL**  
**1. SECTION REQUIREMENTS**  
 A. Submittals: None.  
**PART 2 - PRODUCTS**  
**2.1 GAS VENTS**  
 A. Vent/Air Intake for high efficiency domestic water heater. Follow manufacturer's recommendations for sizing and material.  
 B. Accessories: Tees, elbows, increasers, draft hood connectors, metal cap with bird barrier, adjustable roof flashing, storm collar, support assembly, chimneys, firestopping spacers, and fasteners; fabricated of similar materials and design as wall-penetrating straight sections.  
**PART 3 - EXECUTION**  
**3.1 INSTALLATION**  
 A. Install vents according to stipulated minimum clearances from combustibles.  
 B. Seal between sections of positive pressure vents using only sealants recommended by manufacturer.  
 C. Support vents at intervals to support the weight of the vent and all accessories, without exceeding loading of appliances.  
**END OF SECTION 15554**

**PLUMBING SYMBOLS**



**PLUMBING ABBREVIATIONS**

- EO ENDING
- ABV ABOVE
- ADA AMERICANS WITH DISABILITIES ACT
- ABF ABOVE FINISHED FLOOR
- ARG ABOVE FINISHED GRADE
- AW AUTHORITY HAVING JURISDICTION
- BFF BELOW FINISHED FLOOR
- BFG BELOW FINISHED GRADE
- BHM BACK OF HOUSE
- CTE CONNECT TO EXISTING
- CW DOMESTIC COLD WATER
- DN DOWN
- EXTX EXISTING
- FCO FLOOR CLEANOUT
- FLR FLOOR
- FRM FRONT OF HOUSE
- FS FLOOR FINISH
- FW DOMESTIC FILTERED COLD WATER
- GC GRAB CLEANOUT
- GI GREASE INTERCEPTOR
- GT GREASE TRAP
- GW GREASE WASTE
- GYP GYPSUM BOARD
- HW DOMESTIC HOT WATER
- NTS NOT TO SCALE
- LN LINT
- DN OVERHEAD
- SAN SANITARY WASTE

**PLUMBING ABBREVIATIONS**

- ST STEAM DRAIN
- SWW DOMESTIC SOFTENED COLD WATER
- TPY TYPICAL
- UND UNDERGROUND
- UNO UNLESS NOTED OTHERWISE
- WT WITH
- WC WALK-IN COOLER
- COZAS TENANTS CO2 ALARM SUPPLIER
- GC GENERAL CONTRACTOR
- HES TENANTS HVAC EQUIPMENT SUPPLIER
- HS TENANTS HOOD SUPPLIER
- KE TENANTS KITCHEN EQUIPMENT SUPPLIER
- LAB LABOR
- MSS TENANTS MUSIC SYSTEMS SUPPLIER
- SFS TENANTS SODA POP SUPPLIER
- TAB TENANTS TEST AND BALANCE VENDOR
- TCC TENANTS CABLING CONTRACTOR
- TOC TENANTS TILE CLEANER
- TMS TENANTS TMS/EMPLOYMENT SYSTEM SUPPLIER
- TEMS TENANTS TENSILE/ANALOG SUPPLIER
- TELS TENANTS TENSILE/ANALOG SUPPLIER
- TMB TENANTS TENSILE/ANALOG SUPPLIER
- TMS TENANTS MILLWORK SUPPLIER
- TPB TENANTS PHONE BOARD SUPPLIER
- TPS TENANTS PANELBOARD SUPPLIER
- TQS TENANTS TRAILING SUPPLIER
- TSV TENANTS STEEL VENDOR
- TUV TENANTS TUV SVALIZED SUPPLIER
- WCS TENANTS WALK-IN COOLER SUPPLIER
- WHS TENANTS WATER HEATER SUPPLIER

**PLUMBING GENERAL NOTES**

- A. GENERAL NOTES APPLY TO PLUMBING SHEETS.
- B. PLUMBING WORK SHALL BE DONE IN ACCORDANCE WITH THE PLUMBING CODE, LOCAL HEALTH DEPARTMENT STANDARDS, AND THE AUTHORITY HAVING JURISDICTION. SEE ARCHITECTURAL SHEETS FOR THE PREVALENT CODES.
- C. PIPING LAYOUTS ON DRAWINGS ARE SCHEMATIC. EXACT LOCATIONS ARE TO BE COORDINATED WITH THE EXISTING CONDITIONS AND THE WORK OF OTHER TRADES.
- D. CONCEAL PIPING UNLESS NOTED OTHERWISE. WATER SUPPLY PIPES SHALL BE INSTALLED LEVEL.
- F. PROVIDE SHUT-OFF VALVES FOR ISOLATION OF FIXTURE GROUPS AS SHOWN ON DRAWINGS IN ADDITION TO STOP VALVES AT EACH FIXTURE.
- F. PROVIDE STOP VALVES AT FIXTURES.
- G. PROVIDE TRAP PRIMERS FOR FLOOR DRAINS AS SHOWN ON SHEET P100.
- H. WHERE THE WATER OR GAS SUPPLY LINE SIZE SHOWN IN THE PLUMBING DIAGRAMS DIFFERS FROM THE FIXTURE OR EQUIPMENT CONNECTION SIZE, PROVIDE LINE SIZE PIPE TO WITHIN 6" OF THE FIXTURE OR EQUIPMENT BEFORE TRANSITIONING TO THE CONNECTION SIZE.
- I. PIPING IN EXTERIOR WALLS SHALL BE INSTALLED BETWEEN THE INSULATION AND THE INTERIOR WALL FINISHING MATERIAL.
- J. INSULATE THE HOT AND COLD WATER, CONDENSATE DRAINAGE, AND STORM PIPING PER THE SPECIFICATIONS AND DETAIL RPT700.
- K. PROVIDE GAS SHUT-OFF VALVES AT EACH PIECE OF EQUIPMENT. PROVIDE ACCESSIBLE DIRT LIDS AT THE BOTTOM OF VERTICAL SECTIONS OF GAS PIPE AND AT THE CONNECTION TO EACH PIECE OF EQUIPMENT.
- L. PLUMBING FIXTURES, ACCESSORIES, AND MATERIALS PROVIDED FOR DOMESTIC WATER SHALL BE LEAD-FREE.
- M. PRIOR TO TURNOVER PERFORM A VIDEO INSPECTION OF THE SANITARY AND GREASE LINES FROM THE MAIN LINES WITHIN THE TENANT SPACE TO THE MAIN SEWER TO VERIFY THAT THE SANITARY WASTE SYSTEM IS CONNECTED, CLEAN, AND FREE OF SAGS, BELLES, BREAKS, AND DEBRIS. DELIVER A REPORT AND COPY OF THE VIDEO TO THE TENANT'S CONSTRUCTION MANAGER PRIOR TO TURNOVER.
- N. THE TERM "FURNISH" MEANS SUPPLY AND DELIVER TO THE PROJECT SITE, READY FOR UNLOADING, UNPACKING, ASSEMBLY, INSTALLATION, AND SIMILAR OPERATIONS. THE TERM "INSTALL" DESCRIBES THE OPERATIONS AT THE PROJECT SITE INCLUDING THE ACTUAL UNLOADING, UNPACKING, ASSEMBLY, ERECTING, PLACING, ANCHORING, ADJUSTING, MOVING, TO DEMONSTRATE, FINISHING, CURING, PROTECTING, CLEANING, AND SIMILAR OPERATIONS. THE TERM "PROVIDE" MEANS TO FURNISH AND INSTALL, COMPLETE AND READY FOR THE INTENDED USE.
- O. PRIOR TO CONNECTION TO AN EXISTING SEWER SYSTEM PERFORM A DYE TEST TO VERIFY THE TYPE OF SYSTEM AND THE DIRECTION OF FLOW. REPORT ANY DEVIATION FROM THE CONSTRUCTION DOCUMENTS TO THE TENANT'S CONSTRUCTION MANAGER.
- P. PROVIDE SANITARY AND GREASE WASTE PIPES AT A MINIMUM SLOPE OF 1/4" PER FOOT UNLESS NOTED OTHERWISE.
- Q. INSTALL SHUTOFF AND ISOLATION VALVES SHOWN TO BE ABOVE CEILINGS IN ACCESSIBLE LOCATIONS WITHIN 12" OF LAY-IN CEILING.

**PLUMBING MATERIAL SCHEDULE**

APPLICATION	ALLOWABLE MATERIAL
NATURAL GAS PIPE	
CONCEALED	SCH. 40 STEEL PIPE, MALLEABLE IRON THEAD FITTINGS
EXPOSED	SCH. 40 STEEL PIPE, MALLEABLE IRON THEAD FITTINGS, PAINTED
SANITARY WASTE & VENT PIPE	
ABOVE GROUND HAND SINK DRAINS	BRASS WITH CHROME FINISH
ABOVE GROUND PREP SINK AND WARE WASHING SINK DRAINS	PVC PLASTIC DWV PIPE AND FITTINGS
ABOVE GROUND, CONCEALED	PVC PLASTIC DWV PIPE AND FITTINGS
BELOW GROUND	PVC PLASTIC DWV PIPE AND FITTINGS
WATER SUPPLY PIPE	
ABOVE GRADE	TYPE L COPPER TUBE

**NATIONAL**  
 4635 Triumphant Blvd., Suite 250  
 Hilliard, Ohio 43026  
 Phone: (614) 751-9610  
 Fax: (614) 552-5240  
 Contact: Andy Janscik  
 (614) 328-2028  
 ajanscik@nationalengineering.com

**FOR CONSTRUCTION**

**CHIPOTLE MEXICAN GRILL**  
 CHIPOTLE MEXICAN GRILL, INC.  
 PO BOX 163566  
 COLUMBIANA, OH 43028-2566  
 TELEPHONE: 614.382.2400  
 INTERNET: WWW.CHIPOTLE.COM

STORE NO.: 5427  
 MACOMB  
 1610 E JACKSON  
 MACOMB, IL 61455

Issue/Revised:  
 07.10.2024 PERMIT SET  
 08.03.2024 BID SET  
 07.07.2024 CONSTRUCTION SET

Drawn: \_\_\_\_\_  
 Checked: \_\_\_\_\_  
 Title: \_\_\_\_\_  
 Project No: \_\_\_\_\_  
 2401083

Contact: \_\_\_\_\_

**PLUMBING SPECIFICATIONS**

**P010**

**PLUMBING SUPPLY PLAN NOTES**

- CONNECT TO EXISTING 1-1/2" WATER SERVICE WITH UPSTREAM METER AND BFP.
- PROVIDE 1/2" FILTERED WATER TO THE BAG-IN-BOX SODA CARBONATOR AT 100' AFF. SODA CARBONATOR SHALL HAVE AN INTEGRAL ASSE 3002-3003 CARBONATED BEVERAGE BACKFLOW PREVENTION DEVICE.
- PROVIDE WATER HEATERS DWH-1 AND DWH-2 PER DETAIL 1/7/200.
- PROVIDE WATER METERS MOUNTED TO WALL PER DETAIL 1/7/200. PROVIDE 1/2" SUPPLY PIPES FROM FILTERS TO ICE MAKER AND SODA CARBONATOR AS SHOWN.
- PROVIDE 1/2" FILTERED WATER ROUGH-IN TO THE ICE MAKER AT 56" AFF. PROVIDE 6' LONG STAINLESS STEEL FLEXIBLE BRAIDED WASHING MACHINE WATER CONNECTOR WITH MINIMUM 0.43" ID (BRASSCRAFT 5L12-Z20A-F OR EQUAL) FOR FINAL CONNECTION TO ICE MAKER.
- PROVIDE DOMESTIC WATER ROUGH-INS FOR THE MOP BASIN FAUCET AT 36" AFF. PROVIDE DOMESTIC WATER ROUGH-INS FOR THE CHEMICAL DISPENSER FAUCET (HB-1) AT 64" AFF. DIRECTLY ABOVE THE MOP BASIN FAUCET. SEE ARCHITECTURAL ELEVATION FOR ADDITIONAL INFORMATION.
- CONNECT TO EXISTING 2-1/2" GAS PIPE WITH UPSTREAM METER AND PRESSURE REGULATOR.
- PROVIDE GAS CONNECTIONS TO THE COOKING EQUIPMENT PER DETAIL 1/7/200.
- SUPPORT THE GAS PIPE ON THE ROOF PER DETAIL 5/9/200. WOOD BLOCKING IS NOT AN ACCEPTABLE METHOD OF SUPPORTING THE GAS PIPE.
- PROVIDE ACCESSIBLE LINE-SIZED GAS VALVE, DIRT LEG, AND UNION AT GAS CONNECTION TO THE EQUIPMENT.
- REFER TO ARCHITECTURAL DRAWINGS FOR PAINTING OF INTERIOR AND EXTERIOR EXPOSED GAS PIPE.
- PROVIDE DOMESTIC WATER ROUGH-INS FOR THE CHEMICAL DISPENSER FAUCET (HB-1) AT 52" AFF. SEE ARCHITECTURAL ELEVATION FOR ADDITIONAL INFORMATION.
- PROVIDE DOMESTIC WATER ROUGH-INS FOR THE VICTORY WASH DISPENSER FAUCET (HB-2) AT 52" AFF. SEE ARCHITECTURAL ELEVATION FOR ADDITIONAL INFORMATION.
- PROVIDE ROUGH-INS TO RESTROOM HAND SINKS AS SHOWN IN DETAIL 1/4/7/200.
- PROVIDE KITCHEN EQUIPMENT GAS SHUTOFF "B" BELOW THE CEILING PER DETAIL 4/7/200.
- CONNECT CHEMICAL DISPENSER TO HB-1. CHEMICAL DISPENSER HAS AN INTEGRAL AIR GAP AS SHOWN IN DETAIL 10/7/200.

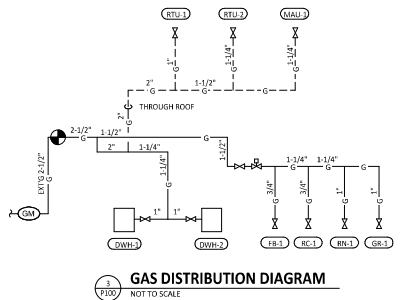
**PLUMBING SUPPLY PLAN NOTES**

- PROVIDE ASSE 1016/1070 POINT-OF-USE THERMOSTATIC MIXING VALVE, WATTS LFUSG-B, ON WATER SUPPLY TO KITCHEN HAND SINKS. PROVIDE ANGLE STOP BELOW SINK. FASTEN MIXING VALVE TO WALL, AND MAKE FINAL CONNECTION FROM ANGLE STOPS TO MIXING VALVE AND FROM MIXING VALVE TO FAUCET USING BRAIDED STAINLESS STEEL HOSE. ADJUST MIXING VALVE FOR A DISCHARGE TEMPERATURE OF APPROXIMATELY 110° F.
- PROVIDE ACCESSIBLE VALVE IN WATER SUPPLY TO FIXTURE AS SHOWN.
- PROVIDE GAS CONNECTION TO THE RICE COOKER PER DETAIL 6/7/200.
- PROVIDE GAS ROUGH-IN TO FRYER BEHIND RICE COOKER TABLE SO THAT VALVES AND DIRT LEG ARE ACCESSIBLE CONC FINDER IS SECURED TO FLOOR.
- PROVIDE 1/2" FILTERED WATER ROUGH-IN TO THE ICE MAKER AT 24" AFF. PROVIDE 6' LONG STAINLESS STEEL FLEXIBLE BRAIDED WASHING MACHINE WATER CONNECTOR WITH MINIMUM 0.43" ID (BRASSCRAFT 5L12-Z20A-F OR EQUAL) FOR FINAL CONNECTION TO ICE MAKER.
- INSTALL RFR IMB-IC ICE MAKER SANITIZER FURNISHED BY TLV PER CHIPOTLE'S INSTALLATION INSTRUCTIONS.
- PROVIDE 3/4" DOMESTIC HOT AND COLD WATER ROUGH-INS FOR THE PREP SINK (SK-2) FAUCET AT 24" AFF TO ALLOW FOR THE VICTORY WASH CHEMICAL DOCK TO BE INSTALLED DIRECTLY BELOW THE PREP SINK BASIN. MAKE FINAL CONNECTION TO PREP SINK FAUCET USING 3/4" BRAIDED STAINLESS STEEL WATER HEATER CONNECTOR HOSE.
- PROVIDE 1/2" HOT WATER TO THE DSH MACHINE AT 56" AFF ABOVE LEFT SIDE OF DSH MACHINE, MAKING FINAL CONNECTION USING HOSE FURNISHED WITH DSH MACHINE. PROVIDE WATER HAMMER ARRESTOR ON HOT WATER LINE.
- PROVIDE ROOF HYDRANT RH-1 WITH BOTTOM OF NOZZLE INSTALLED 24" ABOVE THE BOTTOM OF ROOF DECK. PROVIDE ACCESSIBLE SOLATION VALVE IN WATER SUPPLY TO ROOF HYDRANT. SUPPORT ROOF HYDRANT PER THE MANUFACTURER'S INSTALLATION INSTRUCTIONS.
- PROVIDE FILTERED DOMESTIC WATER ROUGH-IN FOR THE SPEED FILL POT FILLER FAUCET (PP-1) AT 48" AFF. SEE ARCHITECTURAL ELEVATION FOR DETAIL.
- PROVIDE ACCESSIBLE LINE-SIZED WATER SHUT-OFF VALVE AT WATER SERVICE ENTRY. PROVIDE "WATER SHUT OFF" TAG TO PIPE AT VALVE.
- INSTALL RFR IMB-IC ICE MAKER SANITIZER FURNISHED BY TLV PER CHIPOTLE'S INSTALLATION INSTRUCTIONS. LOCATE IMB-IC BELOW UTENSIL COUNTER IN A LOCATION THAT DOES NOT INTERFERE WITH THE ROLLING RACK BELOW THE UTENSIL COUNTER.
- PENETRATIONS THROUGH SHEAR WALL SHALL BE LIMITED TO 10" DIAMETER (OR A GROUP OF PENETRATIONS ALL CONTAINED WITHIN 10" DIAMETER). IF LARGER PENETRATIONS OR GROUPS OF PENETRATIONS ARE REQUIRED COORDINATE WITH STRUCTURAL ENGINEER FOR APPROPRIATE BRACING. SEE STRUCTURAL DRAWINGS FOR SHEAR WALL LOCATION.
- PROVIDE ACCESSIBLE TRAP PRIMER ABOVE 14'-IN CEILING AS SHOWN. INSTALL PER MANUFACTURER'S INSTALLATION INSTRUCTIONS WITH A SERVICE VALVE AT THE TRAP PRIMER INLET. PROVIDE 1/2" DISTRIBUTION PIPES TO FLOOR DRAIN TRAP PRIMER CONNECTIONS) AS SHOWN. HORIZONTAL DISTRIBUTION PIPINGS SHALL HAVE CONTINUOUS SLOPE TO THE FLOOR DRAIN(S).
- REPLACE STOCK WATER CLOSET HANDLE WITH UNIVERSAL CABLE-OPERATED HANDLE (FLUSHMATE AF30003S OR AP30004 - FIELD VERIFY COMPATIBILITY WITH FLUSHMATE SYSTEM IN WATER CLOSET).
- PROVIDE WATER SOFTENER PER DETAIL 16/SHEET P700.

**PLUMBING GAS CONNECTIONS**

TAG	DESCRIPTION	CONNECTION SIZE	EQUIVALENT LENGTH	INPUT
DWH-1	WATER HEATER (GAS TANKLESS)	3/4"	65'	159,000 Btu/h
DWH-2	WATER HEATER (GAS TANKLESS)	3/4"	65'	159,000 Btu/h
FR-1	GAS FRYER	3/4"	85'	90,000 Btu/h
GR-1	GAS GRIDDLE	3/4"	95'	110,000 Btu/h
MAU-1	DIRECT FIRED MAKEUP AIR UNIT	1/2"	70'	235,000 Btu/h
RC-1	RICE COOKER	3/4"	90'	33,000 Btu/h
RB-1	R BURNER RANGE	3/4"	95'	132,000 Btu/h
RTU-1	KITCHEN ROOFTOP UNIT	3/4"	50'	180,000 Btu/h
RTU-2	DINING ROOM ROOFTOP UNIT	3/4"	65'	240,000 Btu/h
GRAND TOTAL		MAX 95'		1,468,000 Btu/h

- NOTES:  
 1. PRESSURE REQUIRED AFTER METER: 7" W.C.  
 2. DISTANCES ARE APPROXIMATE



**PLUMBING FIXTURE SUPPLY CONNECTIONS**

**ROUGH-IN TYPE KEY**

ANGLE 3/8" BRASS CRAFT K1719 OR EQUAL (BRASS/CHROME 1/4 TURN ANGLED BALL STOP WITH 3/8" COMPRESSION CONNECTION).

ANGLE 1/2" BRASS CRAFT R39X-C OR EQUAL (BRASS/CHROME MULTI-TURN ANGLED STOP WITH 1/2" COMPRESSION CONNECTION).

ANGLE 3/4" EVERELOW #4342-NL-W/ 3/4" SWEAT X MIP ADAPTER OR EQUAL (BRASS ANGLE STOP W/ 3/4" FIP INLET AND OUTLET).

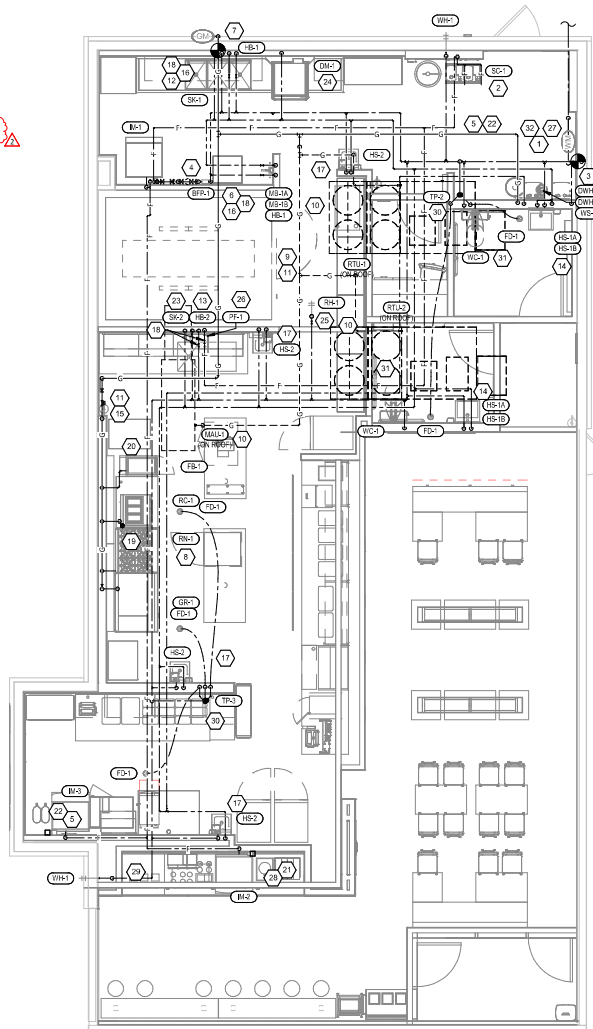
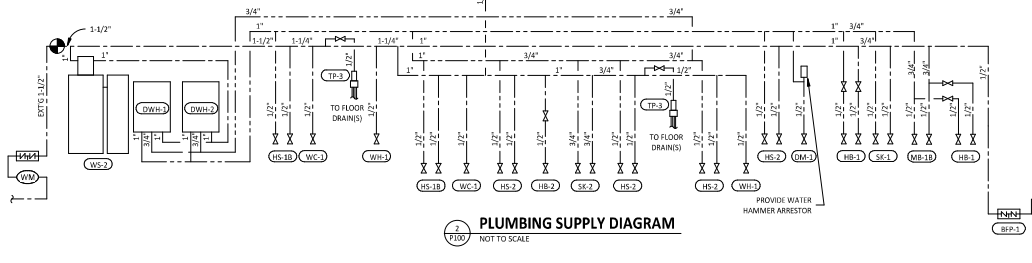
DIRECT PROVIDE COPPER PIPE IN CONNECTION SIZE SHOWN TO FIXTURE.

HOST 1/2" ARROWHEAD BRASS W/50P OR EQUAL (BRASS/CHROME WASHING MACHINE VALVE W/ 2/4" MHI OUTLET)

MIP PROVIDE PIPE WITH MIP THREADED STUBBED OUT OF WALL IN CONNECTION SIZE SHOWN AND LENGTH COMPATIBLE WITH FIXTURE AND WALL MATERIAL/FINISHES.

TAG	DESCRIPTION	CONNECTION SIZE		ROUGH-IN TYPE	WSFU			TOTAL WSFU
		CW	HW		CW	HW	TOTAL	
BFP-2	RPZ BACKFLOW PREVENTER	1 1/2"	1/2"	DIRECT	0	0	0	1
BFP-1	RPZ BACKFLOW PREVENTER	1/2"	1/2"	DIRECT	0	0	0	1
DM-1	DSH (SANITIZING MACHINE) (PUMPED OUTLET)	0"	1/2"	HOSE 1/2"	0	3	3	1
ET-1	EXPANSION TANK	3/4"	1/2"	DIRECT	0	0	0	1
HB-1	CHEMICAL DISPENSER HOSE BIB	1/2"	1/2"	MIP	2.25	2.25	3	2
HB-2	VICTORY WASH HOSE BIB	1/2"	1/2"	MIP	1.5	1.5	1	1.5
HS-1B	RESTROOM HAND SINK FAUCET	1/2"	1/2"	MIP	1.5	1.5	2	2
HS-2	KITCHEN HAND SINK	1/2"	1/2"	ANGLE 3/8"	1.5	1.5	2	4
IM-1	ICE MAKER - ROH	1/2"	1/2"	HOSE 1/2"	1	1	1	1
IM-2	ICE MAKER - SODA	1/2"	1/2"	HOSE 1/2"	1	1	1	1
IM-3	ICE MAKER - SODA	1/2"	1/2"	HOSE 1/2"	1	1	1	1
MB-1B	MOP SINK FAUCET	1/2"	1/2"	MIP	2.25	2.25	3	1
PP-1	SPEED FILL FAUCET	3/8"	1/2"	MIP	1.5	1.5	1	1.5
RH-1	FREEZE PROOF ROOF HYDRANT	3/4"	1/2"	DIRECT	1	1	1	1
SC-1	BAG-IN-BOX SODA RACK WITH CARBONATORS	1/2"	1/2"	ANGLE 3/8"	1	1	1	1
SK-1	THREE COMPARTMENT SINK	1/2"	1/2"	ANGLE 1/2"	3	3	4	1
SK-2	PREP SINK	3/4"	3/4"	ANGLE 1/2"	3	3	4	1
TP-2	TRAP PRIMER (TWO FLOOR DRAINS)	1/2"	1/2"	DIRECT	0	0	0	1
TP-3	TRAP PRIMER (THREE-FOUR FLOOR DRAINS)	1/2"	1/2"	DIRECT	0	0	0	1
WC-1	WATER CLOSET	1/2"	1/2"	ANGLE 3/8"	2	2	2	4
WH-1	FREEZE PROOF WALL HYDRANT	3/4"	1/2"	DIRECT	1	1	2	2
WS-1	WATER SOFTENER	1"	1/2"	DIRECT	0	0	0	1
GRAND TOTAL								46

**PLUMBING SUPPLY DIAGRAM**



**PLUMBING SUPPLY PLAN**

**NATIONAL**  
 4635 Trieman Blvd, Suite 250  
 Hilliard, Ohio 43026  
 Phone: (614) 751-9610  
 Fax: (614) 552-5240  
 Contact: Andy Jansoski  
 (614) 328-2028  
 ajansoski@nationalengineering.com

FOR CONSTRUCTION

CHIPOTLE MEXICAN GRILL, INC.  
 1610 E. JACKSON  
 MACOMB, IL 61455

STORE NO.: 5427  
 MACOMB  
 1610 E. JACKSON  
 MACOMB, IL 61455

Issue Record:

Date	By	Description
07.10.2024	PERMIT SET	
08.03.2024	BID SET	
09.07.2024	CONSTRUCTION SET	
02.07.2025	OB UPDATES	

Drawn: \_\_\_\_\_  
 Checked: \_\_\_\_\_  
 All: \_\_\_\_\_

Project No.: 2401083

Contents:

**PLUMBING PLAN WATER & GAS**

P100



**PLUMBING FIXTURE SCHEDULE**

TAG	DESCRIPTION	FURNISHED BY	INSTALLED BY	BASIS FOR DESIGN		REMARKS	COUNT	CONNECTION SIZE			WATER SUPPLY FIXTURE UNITS			DRAINAGE FIXTURE UNITS
				MANUFACTURER	MODEL			CW	HW	WASTE	CW	HW	TOTAL	
BFP-2	RFP BACKFLOW PREVENTER	GC	GC	CONBRACO	44LF-207	LEAD FREE REDUCED PRESSURE PRINCIPLE BACKFLOW PREVENTER WITH AUTOMATIC DIFFERENTIAL RELIEF VALVE AND AIR GAP FITTING	1	1 1/2"			0	0	0	
BFP-3	RFP BACKFLOW PREVENTER	GC	GC	CONBRACO	44LF-209-TZF	LEAD FREE REDUCED PRESSURE PRINCIPLE BACKFLOW PREVENTER WITH AUTOMATIC DIFFERENTIAL RELIEF VALVE	1	1/2"			0	0	0	
DM-1	DISH SANITIZING MACHINE (PUMPED OUTLET)	KES	GC	SFE ARCH	--	CHEMICAL SANITIZING DISH MACHINE WITH INTEGRAL ELECTRIC BOOSTER HEATER AND PUMPED OUTLET	1	0"	1/2"	5/8"	0	3	3	7
ET-1	EXPANSION TANK	GC	GC	AMTROL	5T-5	2 GALLON CAPACITY	1	3/4"			0	0	0	
FB-1	GAS FRYER	KES	GC	SEE ARCH	--		1							
FCO-1	FLOOR CLEANOUT (3")	GC	GC	SIoux CHIEF	852-3PWR	ON-GRADE ADJUSTABLE CLEANOUT WITH INTERNAL THREADED CLEANOUT PLUG AND ROUND NICKEL-BRONZE RING AND COVER (OR APPROVED EQUAL WITH INTERNAL THREADED CLEANOUT PLUG)	1			3"				0
FCO-2	FLOOR CLEANOUT (4")	GC	GC	SIoux CHIEF	852-4PWR	ON-GRADE ADJUSTABLE CLEANOUT WITH INTERNAL THREADED CLEANOUT PLUG AND ROUND NICKEL-BRONZE RING AND COVER (OR APPROVED EQUAL WITH INTERNAL THREADED CLEANOUT PLUG)	5			4"				0
FD-1	FLOOR DRAIN	GC	GC	SIoux CHIEF	842-Z-PWR	ADJUSTABLE FLOOR DRAIN WITH PVC BODY, ROUND POLISHED METAL RING AND STRAINER, AND TRAP PRIMER PORT	5	1/2"		2"				2
FDL-2	FUNNEL DRAIN	GC	GC	JAY B. SMITH	3823T	FUNNEL DRAIN WITH CAST BRONZE BODY AND THREADED OUTLET	1			3"				1
FS-1	FLOOR SINK	GC	GC	SIoux CHIEF	861-3PU2	HEAVY DUTY PVC FLOOR SINK WITH ALUMINUM DOME BOTTOM STRAINER AND OPEN HALF PVC GRATE	7			3"				3
GR-1	GAS GRIDDLE	KES	GC	SEE ARCH	--		1							
HB-1	CHEMICAL DISPENSER HOSE BIB	KES	GC	SEE ARCH	--	COMMERCIAL QUALITY HOT & COLD MIXING WALL HYDRANT. SUPPLY ARMS SHALL HAVE INTEGRAL SHUT-OFF STOP AND CHECK VALVE. FAUCET HAS FEMALE NPT INLETS.	2	1/2"	1/2"		2.25	2.25	3	
HR-2	VEGETABLE WASH HOSE BIB	KES	GC	SFE ARCH	--	SILL FAUCET WITH NPT FEMALE INLET	1	1/2"			1.5		1.5	
HS-1A	RESTROOM HAND SINK	GC	GC	AMERICAN STANDARD	9024-0016C	ADA-ACCESSIBLE, WALL-MOUNTED, PORCELAIN LAVATORY. PROVIDE ZURN Z1231 (Z1233-0 FOR BACK-TO-BACK APPLICATIONS) CONCEALED AIRM CARBURET IN WALL. APPROVED ALTERNATE: KOHLER K-2084	2			2"				1
HS-1B	RESTROOM HAND SINK FAUCET	KES	GC	SEE ARCH	--	PLUG-IN AUTOMATIC FAUCET WITH 0.5 GPM AIRATOR AND THERMOSTATIC MIXING VALVE. ADJUST FAUCET CONTROLS FOR 10 SECONDS SHOWER DELAY AND 30 SECONDS TRIP-OUT DELAY WITH SWIVEL GOOSENECK	2	1/2"	1/2"		1.5	1.5	2	
HS-2	KITCHEN HAND SINK	KES	GC	SEE ARCH	--	STAINLESS STEEL SINK WITH WALL MOUNTING BRACKET AND BACKSPASH MOUNTED FAUCET WITH SWIVEL GOOSENECK	4	1/2"	1/2"	2"	1.5	1.5	2	1
IM-1	ICE MAKER - BOSH	KES	KES	SEE ARCH	--	BACK-OFF-HOUSE ICE MAKER WITH BIN (STANDARD CAPACITY REMOTE AIR COOLED)	1	1/2"						1
IM-2	ICE MAKER - SODA	KES	KES	SEE ARCH	--	SODA MACHINE-MOUNTED ICE MACHINE (INTEGRAL AIR COOLED)	1	1/2"						1
IM-3	ICE MAKER - SODA	KES	KES	SEE ARCH	--	SODA MACHINE-MOUNTED ICE MACHINE (REMOTE AIR COOLED)	1	1/2"						1
MB-1A	MOP BASIN	GC	GC	FIAT	MSB2424	PROVIDE 24"x24"x10" MOLDED-STONE MOP BASIN. INSTALL MOP BASIN IN A BED OF GROUT SO THERE ARE NO VOIDSP BETWEEN THE MOP BASIN AND THE SLAB.	1			3"				2
MB-1B	MOP SINK FAUCET	KES	GC	SEE ARCH	--	SERVICE SINK FAUCET WITH BUILT IN STOPS, LEVER HANDLES, WALL BRACE, AND NPT FEMALE INLETS	1	1/2"	1/2"		2.25	2.25	3	
PF-1	SPEED FILL FAUCET	KES	GC	SEE ARCH	--	WALL-MOUNTED POT FILLER W/ SELF-CLOSING FILLER VALVE AND NPT FEMALE INLET	1	3/8"			1.5	1.5		
RC-1	RICE COOKER	KES	GC	SEE ARCH	--		1							
RH-1	FREEZE PROOF ROOF HYDRANT	GC	GC	HOEFTNER	2131R	AUTOMATIC DRAINING, FREEZELESS ROOF HYDRANT WITH ANTI-SIPHON VACUUM BREAKER. HOEFTNER PRODUCTS 1408) 847-7615	1	3/4"						1
RN-1	6 BURNER RANGE	KES	GC	SEE ARCH	--		1							
SC-1	BRG-IN-BODY SODA RACK WITH CARBONATORS	SPS	SPS	SEE ARCH	--	SODA CARBONATOR(S) SHALL HAVE AN INTEGRAL ASSE 1002-RATED CARBONATED BEVERAGE BACKFLOW PREVENTION DEVICE	1	1/2"			1			1
SK-1	THREE COMPARTMENT SINK	KES	GC	SEE ARCH	--	THREE-COMPARTMENT WARE-WASHING SINK FURNISHED WITH (1) PRE-RINSE UNIT WITH ADD-ON FAUCET	1	1/2"	1/2"	2"	3	3	4	0
SK-2	PREP SINK	KES	GC	SEE ARCH	--	STAINLESS STEEL PREP TABLE WITH INTEGRAL PREP SINK. FURNISHED WITH "BIG FLO" FAUCET	1	3/4"	3/4"	2"	3	3	4	0
TD-1	TRENCH DRAIN	GC	GC	ZURN	2886 8601 8602	6" X 160' HOPE TRENCH DRAIN (DLOPED FROM 3.50" TO 4.70") WITH (2) CLOSED END CAPS, (1) 4" NO-HUB BOTTOM OUTLET, AND CLASS-A FEEEL-PROOF POLYETHYLENE GRATES. SEE DETAIL ON SHEET P200 FOR REDUCTION TO 2" DRAIN CONNECTION.	1			2"				2
TP-2	TRAP PRIMER (TWO FLOOR DRAINS)	GC	GC	PRECISION PLUMBING PRODUCTS	P2-500 W/ DU-U	TRAP PRIMER WITH INTEGRAL VACUUM BREAKER AND DISTRIBUTION UNIT. CAP UNUSED DISTRIBUTION UNIT OUTLETS.	1	1/2"			0	0	0	
TP-3	TRAP PRIMER (THREE-FOUR FLOOR DRAINS)	GC	GC	PRECISION PLUMBING PRODUCTS	P1-500 W/ DU-U	TRAP PRIMER WITH INTEGRAL VACUUM BREAKER AND DISTRIBUTION UNIT. CAP UNUSED DISTRIBUTION UNIT OUTLETS.	1	1/2"			0	0	0	
WC-1	WATER CLOSET	GC	GC	KOHLER	K-3519 W/ SEAT K-4666-C	WHITE HIGHLINT 1.0 GPF, 17-1/8"-HIGH, ADA ACCESSIBLE, PRESSURE ASSIST WATER CLOSET WITH OPEN-FRONT SEAT. INSTALL TRIP LEVER ON THE TANK TO THE OPEN SIDE OF THE STALL (ADD-ON TO THE MODEL FOR RIGHT HAND TRIP LEVER).	2	1/2"		3"	2		2	4
WH-1	FREEZE PROOF WALL HYDRANT	GC	GC	WOODGORD	MODEL 65	AUTOMATIC DRAINING, FREEZELESS WALL HYDRANT WITH ANTI-SIPHON VACUUM BREAKER. PROVIDE WITH STEM LONG ENOUGH TO REACH INSIDE THE THERMAL ENVELOPE OF THE BUILDING.	2	3/4"			1			1
WS-1	WATER SOFTENER	KES	GC	CUNO	CFSM1254E	POINT OF ENTRY HIGH CAPACITY WATER TREATMENT SYSTEM. PROVIDE STARTUP PIR MANUFACTURER'S INSTALLATION INSTRUCTIONS.	1	1"			0	0	0	

**WATER HEATER SCHEDULE**

TAG	DESCRIPTION	NATURAL GAS		ELECTRICAL		FURNISHED BY	INSTALLED BY	BASIS FOR DESIGN		REMARKS
		INPUT	CONNECTION SIZE	FLA	V/P/H			MANUFACTURER	MODEL	
DWH-1	WATER HEATER (GAS TANKLESS)	199,000 Btu/h	3/4"		120/1/60	GC	GC	NAVIEN	NPE-240A2	RATED FLOW RATE: 5.6 GPM @ 67°F RISE THERMAL EFFICIENCY: 96% PROVIDE WITH LEAD FREE "PLUMB EASY VALVE SET". GC SHALL PURCHASE WATER HEATER DIRECTLY THROUGH A NAVIEN AUTHORIZED DISTRIBUTOR (1-800-519-8794 OR WWW.NAVIEN.COM TO LOCATE AUTHORIZED DISTRIBUTOR).
DWH-2	WATER HEATER (GAS TANKLESS)	199,000 Btu/h	3/4"		120/1/60	GC	GC	NAVIEN	NPE-240A2	RATED FLOW RATE: 5.6 GPM @ 67°F RISE THERMAL EFFICIENCY: 96% PROVIDE WITH LEAD FREE "PLUMB EASY VALVE SET". GC SHALL PURCHASE WATER HEATER DIRECTLY THROUGH A NAVIEN AUTHORIZED DISTRIBUTOR (1-800-519-8794 OR WWW.NAVIEN.COM TO LOCATE AUTHORIZED DISTRIBUTOR).

**NATIONAL**  
 4635 Trueman Blvd, Suite 250  
 Hilliard, Ohio 43026  
 Phone: (614) 751-9610  
 Fax: (614) 552-5240  
 Contact: Andy Janosik  
 (614) 328-2028  
 ajanosik@nationalengineering.com

FOR  
 CONSTRUCTION

Copyright 2025  
 THIS DRAWING IS AN INSTRUMENT OF SERVICE  
 AND AS SUCH REMAINS THE PROPERTY OF  
 CHIPOTLE MEXICAN GRILL, INC. PERMISSION FOR  
 USE OF THIS DOCUMENT IS LIMITED AND CAN BE  
 EXTENDED ONLY BY WRITTEN AGREEMENT WITH  
 CHIPOTLE MEXICAN GRILL, INC.



CHIPOTLE MEXICAN GRILL, INC.  
 PO BOX 187566  
 COLUMBUS, OH 43218-2566  
 TELEPHONE: 614.392.2400  
 INTERNET: WWW.CHIPOTLE.COM

STORE NO.: 5427  
 MACOMB  
 1610 E JACKSON  
 MACOMB, IL 61455

Issue/Revised:  
 07.10.2024 PERMIT SET  
 09.03.2024 BID SET  
 02.02.2025 CONSTRUCTION SET

Revisions:

Drawn: \_\_\_\_\_  
 Checkd: \_\_\_\_\_

AJW: \_\_\_\_\_  
 AJW

Project No:  
 2401083

Contract:  
 PLUMBING  
 SCHEDULES

P600





**LIGHTING CONTROL PANEL SCHEDULE: LCP**

RELAY	PANEL	CIRCUIT	AREA SERVED	CONTROL	TIME ON	TIME OFF	DIMMER CONTROL	NOTES
R1	A	32	KITCHEN A	TIMELOCK	7:00:00 AM	12:00:00 AM	N/A	SINGLE POLE (NC)
R2	A	32	KITCHEN B	TIMELOCK	7:00:00 AM	12:00:00 AM	N/A	SINGLE POLE (NC)
R3	A	30	DINING ROOM A	TIMELOCK	10:00:00 AM	12:00:00 AM	N/A	SINGLE POLE (NC)
R4	A	30	DINING ROOM B	TIMELOCK	10:00:00 AM	12:00:00 AM	N/A	SINGLE POLE (NC)
R5	A	30	DINING ROOM C	TIMELOCK	10:00:00 AM	12:00:00 AM	N/A	SINGLE POLE (NC)
R6	A	30	DINING ROOM DL	TIMELOCK	10:00:00 AM	12:00:00 AM	N/A	SINGLE POLE (NC)
R7	A	28	RESTROOM EXHAUST FAN	TIMELOCK	7:00:00 AM	12:00:00 AM	N/A	SINGLE POLE (NC)
R8	A	42	EXT. LIGHTING/SIGNAGE	TIMELOCK	SUNSET - 1 HR	12:00:00 AM	N/A	SINGLE POLE (NC)

**Lighting Control Panel Schedule Legend**

A. DUPLICATE PANEL SCHEDULE AND PERMANENTLY INSTALL WITHIN THE LIGHTING CONTROL PANEL.

**LIGHTING CONTROL COMPONENTS SCHEDULE**

DESCRIPTION	QUANTITY	FURNISHED BY	INSTALLED BY	MANUFACTURER	MODEL	REMARKS
LCP FLIGHT LIGHTING CONTROL PANEL	1	TLS	GC	ACUTY	ARP INTERCOM NLT 8FCR INVOLETRK FM DTC CPTLE	8 RELAY PANEL FOR DIMMING CONTROL WITH FLUSH MOUNT ENCLOSURE AND DIGITAL TIME CLOCK
WALL MOUNTED OVERRIDE SWITCH	1	TLS	GC	ACUTY	HPD00A 4P	SEE LIGHTING CONTROL DIAGRAM FOR SWITCH CONFIGURATION
WALL MOUNTED DIMMER SWITCH	2	TLS	GC	COOPER	SALP0R W	SLIDE DIMMER COMPATIBLE WITH UP TO 300W LED LIGHTING. SET AT 50% IF DINING ROOM LIGHTS FLICKER AT THIS DIMMER SETTING. THEN GC SHALL PROVIDE LUTRON DUAL 253P DIMMER AS REPLACEMENT.
WALL MOUNTED LINE VOLTAGE OCCUPANCY SENSOR	3	TLS	GC	HUBBELL	LHM2S 1-W-WH	WHITE DUAL TECHNOLOGY SINGLE RELAY WITH 1 BUTTON AND NEUTRAL WIRING

**LIGHTING FIXTURE SCHEDULE**

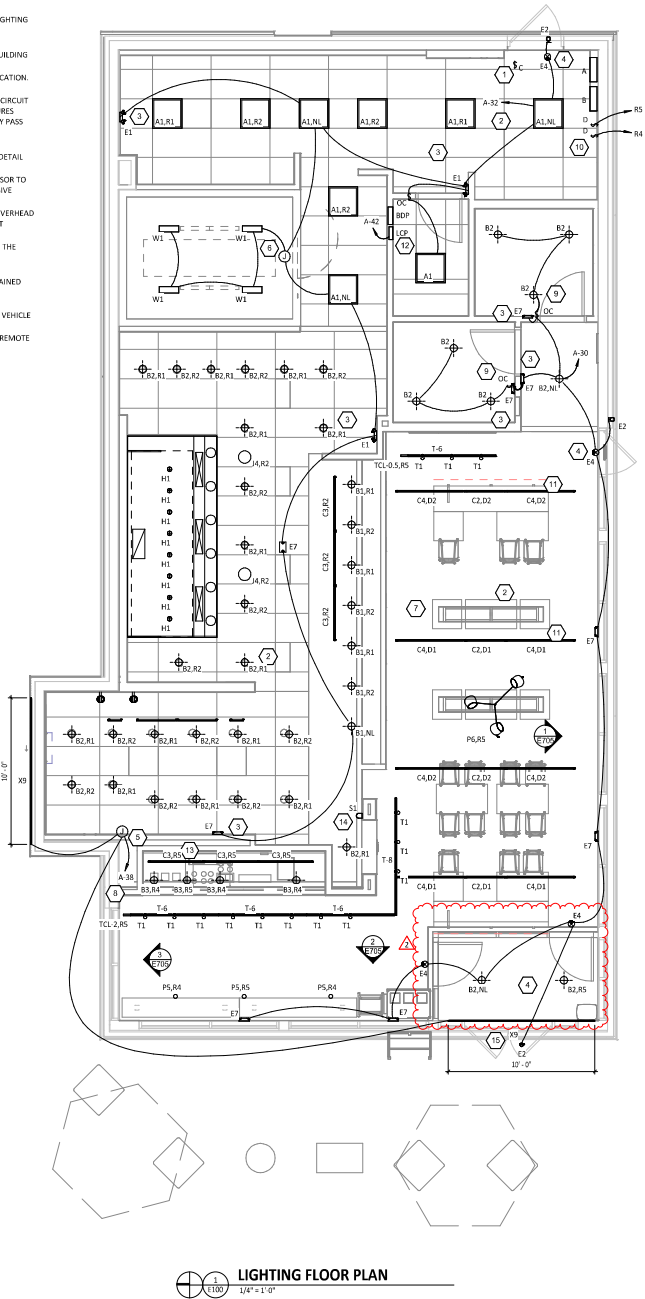
TAG	COUNT	DESCRIPTION	MOUNTING	VOLTAGE	WATTS	FURNISHED BY	INSTALLED BY	MANUFACTURER	MODEL	LAMP	REMARKS
A1	9	2x2 LED LENSED TROFFER	LAY-IN	120V	30W	TLS	GC	NOKA LIGHTING	NF08L-K227334 W	INTEGRAL 3000K LED	COMPATIBLE WITH 0-10V DIMMING, FACTORY LOCKED TO 3000K
B1	7	RECESSED 6IN CAN LIGHT	CEILING	120V	17W	TLS	GC	NOKA LIGHTING	NHC-66244TL W/ NIM 57W/M3 TRIM	INTEGRAL 3000K LED	(L1) 17W ECOSTORY EDC-PAR38C-17-GU24-27 K-32SD (125-2700K) W/ GU 24 BASE
B2	35	RECESSED 6IN CAN LIGHT W/ LED TRIM	CEILING	120V	17W	TLS	GC	NOKA LIGHTING	NHC-66244TL W/ MLRC 95-330W LED TRIM	INTEGRAL 3000K LED	LED TRIM FURNISHED WITH GU24 SOCKET ADAPTER
B3	4	RECESSED 6IN CAN LIGHT W/ BLACK LED TRIM	CEILING	120V	12W	TLS	GC	NOKA LIGHTING	NHC-66244TL W/ MLRC2-95-1278B LED TRIM	INTEGRAL 3000K LED	BLACK LED TRIM FURNISHED WITH GU24 SOCKET ADAPTER
C0	2	LOW PROFILE LED - 1 FT	SURFACE	120V	5W	TLS	GC	HERA LIGHTING	EL/LED1/2/W/W	INTEGRAL 3000K LED	FURNISHED WITH COVERS, CONNECTORS, AND ONE HARDWARE BOX OR CORD/PLUG PER SECTION
C2	6	LOW PROFILE LED - 3 FT	SURFACE	120V	12W	TLS	GC	HERA LIGHTING	EL/LED/34/W/W	INTEGRAL 3000K LED	FURNISHED WITH COVERS, CONNECTORS, AND ONE HARDWARE BOX OR CORD/PLUG PER SECTION
C3	6	LOW PROFILE LED - 4 FT	SURFACE	120V	15W	TLS	GC	HERA LIGHTING	EL/LED/46/W/W	INTEGRAL 3000K LED	FURNISHED WITH COVERS, CONNECTORS, AND ONE HARDWARE BOX OR CORD/PLUG PER SECTION
C4	8	LOW PROFILE LED - 5 FT	SURFACE	120V	18W	TLS	GC	HERA LIGHTING	EL/LED/59/W/W	INTEGRAL 3000K LED	FURNISHED WITH COVERS, CONNECTORS, AND ONE HARDWARE BOX OR CORD/PLUG PER SECTION
E1	3	EMERGENCY LIGHT - DUAL HEAD	VARIOUS	120V	2W	TLS	GC	EXTRONIX	LED 90	INTEGRAL LED	90 MINUTE BATTERY BACKUP
E2	3	EXTERIOR REMOTE EMERGENCY LIGHT	VARIOUS	4V	1W	TLS	GC	EXTRONIX	MLED1-B-WP	INTEGRAL LED	LOW VOLTAGE REMOTE EMERGENCY LIGHT POWERED BY REMOTE-CAPABLE EXIST SIGN WITH MOUNTING PLATE
E4	1	WHITE EXIST SIGN WITH EMERGENCY LIGHT STANDARD RED LETTERS	VARIOUS	120V	2W	TLS	GC	EXTRONIX	CLED U-WH	INTEGRAL LED	90 MINUTE BATTERY BACKUP WITH INTEGRAL EMERGENCY LIGHT, REMOTE HEAD CAPABLE
E7	9	EMERGENCY LIGHT	VARIOUS	120V	2W	TLS	GC	EXTRONIX	EV2	INTEGRAL LED	90 MINUTE BATTERY BACKUP
H1	8	HARDWARE HOOD LIGHT	SURFACE	120V	15W	TLS	GC	FURNISHED BY HOOD	FURNISHED BY HOOD	INTEGRAL LED	INSTALL LAMP FURNISHED SEPARATELY BY LIGHTING SUPPLIER
A4	2	DECORATIVE PENDANT	PENDANT	120V	9W	TLS	GC	BARNLIGHT	BLC-C8N-100-ASH-SB K-100-NA-GU24	INTEGRAL LED	(L) TOP LISA-291037N GREEN CREATIVE WITH BLACK LAMP SHADE, BLACK CORD, AND OAK LAMP HODDER
P5	3	PENDANT	PENDANT	120V	5W	TLS	GC	HI-LITE MFG	HL-C-91/CB2-91/20W/BL	INTEGRAL LED	ADJUST CORD LENGTH FOR MOUNTING HEIGHT CALLED FOR IN ARCHITECTURAL DRAWINGS
P6	1	DECORATIVE DINING ROOM PENDANT	PENDANT	120V	30W	TLS	GC	BARNLIGHT	BLC-CJGT-133-35630-3	INTEGRAL LED	HARDWIRED SET OF 13 HEADS WITH UNIVERSAL CANOPY AND STANDARD BLACK CABLES
S1	1	DRIVE-UP PEEK-UP WINDOW CHIMNEY/TROBE	WALL	16V	0W	TLS	GC	FEDERAL SIGNAL	33A0308 W/ SLM8W-002-024	INTEGRAL LED	SET SWITCH A TO "CHIME 1 SINGLE" [13011] AND SWITCH B TO "CHIME 2 SINGLE" [00111]
T1	14	TRACK HEAD	TRACK	120V	10W	TLS	GC	JUNO	R605_BOK 90CR PDIM WHI_BL	INTEGRAL LED	BLACK CYLINDER TRACK HEAD W/ UNIVERSAL 120V TRAC ADAPTER AND WIDE FLOOD BEAM
T-6	4	TRACK (6 FT)	SURFACE	120V	0W	TLS	GC	JUNO	T 6FT BL	N/A	SINGLE CIRCUIT, BLACK FINISH. FURNISH WITH CONNECTORS TO ACHIEVE ARRANGEMENT SHOWN ON PLANS. TRIM AS REQUIRED FOR LENGTHS SHOWN.
T-8	1	TRACK (8 FT)	SURFACE	120V	0W	TLS	GC	JUNO	T 8FT BL	N/A	SINGLE CIRCUIT, BLACK FINISH. FURNISH WITH CONNECTORS TO ACHIEVE ARRANGEMENT SHOWN ON PLANS. TRIM AS REQUIRED FOR LENGTHS SHOWN.
TCL-0.5	1	TRACK CURRENT LIMITER (50W)	SURFACE	120V	0W	TLS	GC	JUNO	TELEM11 BL W/ TCLCB 0.5A BLACK	N/A	BLACK CURRENT LIMITING END FEED WITH CIRCUIT BREAKER
TCL-2	1	TRACK CURRENT LIMITER (240W)	SURFACE	120V	0W	TLS	GC	JUNO	TELEM11 BL W/ TCLCB 2A BLACK	N/A	BLACK CURRENT LIMITING END FEED WITH CIRCUIT BREAKER
W1	4	HWK LED LIGHT	SURFACE	120V	29W	WCS	GC	FURNISHED BY HWK	FURNISHED BY HWK	INTEGRAL LED	NET-AIATED COOLER FIXTURE
X0	2	EXTERIOR LED CHANNEL LIGHT	SURFACE	120V	45W	TLS	GC	PARADIGM LED	AAJC-2415-S/W OPAL LENS AND END CAPS	INTEGRAL LED	FLEXSR W/ REMOTE-MOUNTED NEMA 3R LED DRIVER. SEE PLAN FOR LENGTHS.

**Lighting Fixture Schedule Notes**

A. SEE THE ARCHITECTURAL REFLECTED CEILING PLAN FOR EXACT LIGHT LOCATIONS.  
B. SEE THE ARCHITECTURAL LIGHTING DETAILS FOR FIXTURE CONSTRUCTION DETAILS.

**ELECTRICAL LIGHTING PLAN NOTES**

1. INSTALL WALL-MOUNTED LIGHTING OVERRIDE SWITCH AND CONNECT TO LCP AS SHOWN IN DETAIL 6/E710
2. FOR UNCLICHTED LIGHT FIXTURES, CONNECT TO RELAY CIRCUIT INDICATED NEXT TO THE FIXTURE TAG THROUGH THE LIGHTING CONTROL PANEL (LCP) UNLESS NOTED OTHERWISE.
3. WALL MOUNT THE EMERGENCY LIGHT FIXTURE AT 6" BELOW THE CEILING UNLESS NOTED OTHERWISE.
4. VERIFY MOUNTING HEIGHT OF EXIST SIGN PRIOR TO ROUGH-IN. EXIST SIGN MUST BE VISIBLE FROM DINING ROOM AFTER BUILDING SYSTEMS HAVE BEEN INSTALLED. SEE ARCHITECTURAL ELEVATIONS FOR FURTHER INFORMATION.
5. INSTALL LED DRIVERS FURNISHED WITH THE X9 LED STRIP LIGHTS ON WALL 6" ABOVE THE CEILING IN AN ACCESSIBLE LOCATION. PROVIDE LOW VOLTAGE WIRING FROM LED DRIVER TO THE X9 LIGHT FIXTURES AS SHOWN.
6. INSTALL LIGHT FIXTURES FURNISHED WITH THE WALK-IN COOLER. PROVIDE UNSWITCHED CONDUCTOR FROM LIGHTING CIRCUIT TO WALK-IN COOLER LIGHTING J-BOX AND FROM J-BOX TO LIGHT FIXTURES AS SHOWN. CONDUIT BETWEEN LIGHT FIXTURES SHALL BE ROUTED ON THE INTERIOR OF THE WALK-IN COOLER. SEAL INTERIOR AND EXTERIOR OF CONDUITS WHERE THEY PASS THROUGH THE WALK-IN COOLER ENVELOPE PER THE NEC.
7. PROVIDE UNISTRUT AS SHOWN ON THE ARCHITECTURAL RCP PER THE ARCHITECTURAL UNISTRUT DETAIL, TYPICAL.
8. CONNECT EXTERIOR LIGHTING CIRCUIT TO CIRCUIT SHOWN THROUGH THE EXTERIOR LIGHTING CONTACTOR PANEL PER DETAIL 6/E710.
9. INSTALL WALL-MOUNTED OCCUPANCY SENSOR FURNISHED BY LIGHTING SUPPLIER AT 42" AFF. ADJUST OCCUPANCY SENSOR TO PROVIDE AUTOMATIC ON/AUTOMATIC OFF OPERATION WITH A FIXED TIMER OF 30 MINUTES AND WITH BOTH THE PASSIVE INFRARED AND ULTRASONIC SENSORS ENABLED.
10. INSTALL WALL-MOUNTED DIMMERS ABOVE PANELBOARDS 6" ABOVE LAY-IN CEILING FOR CONTROL OF DINING ROOM OVERHEAD STRIP LED AND PENDANT LIGHTS. CONNECT DIMMERS TO RELAYS SHOWN THROUGH THE LIGHTING CONTROL PANEL. SET DIMMERS AT 50%.
11. CONNECT DINING ROOM (RELAY CIRCUITS 94 AND 95) OVERHEAD STRIP LED LIGHTS TO THE RELAY INDICATED THROUGH THE CORRESPONDING WALL-MOUNTED DIMMER INSTALLED ABOVE THE PANELBOARDS.
12. INSTALL LIGHTING CONTROL SYSTEM PER DETAIL 6/E710.
13. PENETRATIONS THROUGH SHEAR WALL SHALL BE LIMITED TO 3" DIAMETER (OR A GROUP OF PENETRATIONS ALL CONTAINED WITHIN THE 3" DIAMETER). IF LARGER PENETRATIONS OR GROUPS OF PENETRATIONS ARE REQUIRED COORDINATE WITH STRUCTURAL ENGINEER FOR APPROPRIATE BRACING. SEE STRUCTURAL DRAWINGS FOR SHEAR WALL LOCATION.
14. INSTALL CHIMNEY/TROBE FURNISHED WITH VEHICLE DETECTION SYSTEM ON WALL 12" BELOW CEILING AND CONNECT TO VEHICLE DETECTION SYSTEM PER THE MANUFACTURER'S INSTALLATION INSTRUCTIONS.
15. INSTALL E2 REMOTE EMERGENCY LIGHT TO BOTTOM OF CANOPY. CONCEAL LOW VOLTAGE WIRING FROM EXIST SIGN TO REMOTE EMERGENCY LIGHT.



**LIGHTING FLOOR PLAN**  
1/4" = 1'-0"

**NATIONAL**  
4635 Trueman Blvd, Suite 250  
Hilliard, Ohio 43026  
Phone: (614) 751-9610  
Fax: (614) 552-5240  
Contact: Andy Jansoski  
(614) 328-2028  
ajanoski@nationalengineering.com

FOR CONSTRUCTION

CHIPOTLE MEXICAN GRILL, INC.  
1610 E JACKSON  
MACOMB, IL 61455



STORE NO.: 5427  
MACOMB  
1610 E JACKSON  
MACOMB, IL 61455

Issue History:

DATE	DESCRIPTION
07.10.2024	PERMIT SET
09.03.2024	BID SET
02.07.2025	CONSTRUCTION SET

Revisions:

NO.	DATE	DESCRIPTION
1	02.07.2025	08 UPDATES

Drawn: [ ]  
Checked: [ ]  
AJJ AJJ

Project No.: 2401083

**ELECTRICAL LIGHTING PLAN**

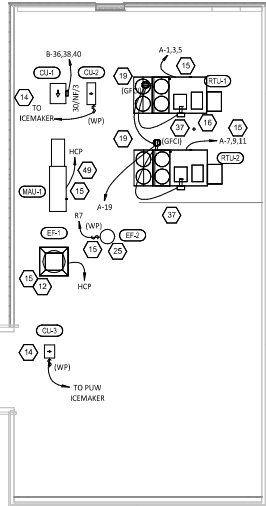
**E100**

**ELECTRICAL POWER PLAN NOTES**

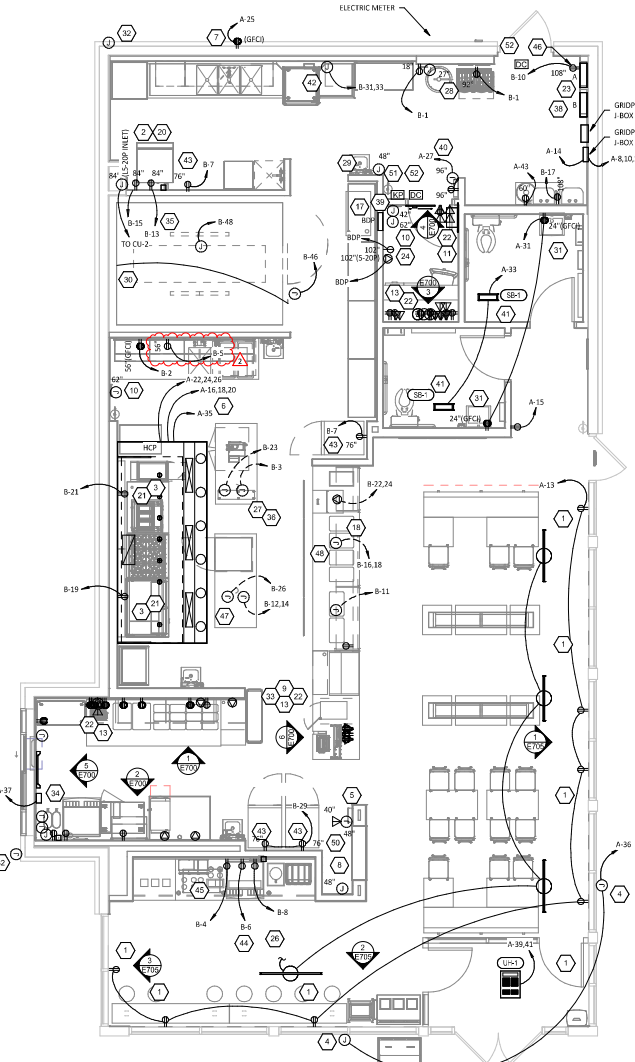
- 1 SHOW ROOM WINDOW RECEPTACLE. COORDINATE EXACT RECEPTACLE MOUNTING HEIGHT IN THE FIELD. LOCATION SHALL BE IN THE DR/WALL IMMEDIATELY ABOVE THE MAIN STORE-FRONT WINDOW AND AS SHOWN IN THE DINING ROOM ELECTRICAL ELEVATIONS ON SHEET E710.
- 2 ICE MACHINE ELECTRICAL TIE-IN. COORDINATE EXACT LOCATION WITH EQUIPMENT INSTALLER PRIOR TO ROUGH-IN. PROVIDE 1/2" CONDUIT FROM ICE MAKER TO RECEPTACLE. PROVIDE 48" CIRCS, ONE WITH 5' 20P END AND ONE WITH 15' 20R END. FROM ICE MAKER TO RECEPTACLE AND FLANGED INLET.
- 3 CONNECT RECEPTACLES SERVING EQUIPMENT BELOW THE KITCHEN HOOD TO THE CIRCUITS SHOWN THROUGH THE CONTACTOR INTEGRAL TO THE HOOD CONTROL PANEL. INTEGRAL CONTACTOR SHALL BE INTERLOCKED TO HOOD FIRE PROTECTION SYSTEM SO THAT RECEPTACLES ARE DE-ENERGIZED UPON ACTIVATION OF HOOD FIRE PROTECTION SYSTEM.
- 4 JUNCTION BOX FOR EXTERIOR SIGN LIGHTING. COORDINATE EXACT LOCATION WITH CHIPOTLE'S CONSTRUCTION MANAGER AND THE SIGN INSTALLER PRIOR TO ROUGH-IN. CONNECT TO CIRCUIT SHOWN THROUGH THE EXTERIOR LIGHTING CONTACTOR PANEL AS SHOWN IN DETAIL E710.
- 5 PROVIDE A SINGLE GANG VERTICAL JUNCTION BOX FOR THE KITCHEN EXHAUST SUPPRESSION SYSTEM FULL STATION. PROVIDE A 1/2" CONDUIT FROM THE J-BOX TO 6" ABOVE THE CEILING AND TERMINATE WITH A CONDUIT BUSHING. COORDINATE EXACT LOCATION WITH THE KITCHEN EXHAUST SUPPRESSION SYSTEM INSTALLER AND THE FIRE MARSHAL PRIOR TO ROUGH-IN.
- 6 HOOD CONTROL PANEL AND KITCHEN EXHAUST SUPPRESSION SYSTEM CABINET SHALL BE LOCATED WITHIN THE INTEGRAL HOOD UTILITY CABINET. PROVIDE FINAL ELECTRICAL CONNECTIONS PER THE MANUFACTURER'S INSTALLATION INSTRUCTIONS NECESSARY FOR A COMPLETE AND OPERATIONAL SYSTEM.
- 7 PROVIDE A DUPLEX GFCI RECEPTACLE WITH WEATHERPROOF WHILE IN USE OUTLET COVER FOR IRRIGATION CONTROLLER.
- 8 PROVIDE AN EMPTY SINGLE GANG J-BOX FOR VOLUME CONTROLS. INSTALL 16/2 SPEAKER WIRE FURNISHED BY MSS FROM THE J-BOX TO THE AMPLIFIER IN THE OFFICE WITH 3 FEET OF SLACK AT EACH END.
- 9 COORDINATE DATA/POWER RECEPTACLE MOUNTING REQUIREMENTS WITH THE CASE WORK INSTALLER PRIOR TO ROUGH-IN.
- 10 PROVIDE ROUGH-IN FOR LAUNCHPORT AS NOTED. LAUNCHPORT WILL BE FURNISHED AND INSTALLED BY CHIPOTLE WITH THE WALLSTATION AT 62" AFF. PROVIDE A 4" X 2 1/8" DEEP OCTAGON BOX WITH 1/2" EXTENSION RING AT 62" AFF FOR THE WALLSTATION INSTALLATION WITH A 1" CONDUIT WITH PULL STRING FROM THE J-BOX TO ABOVE THE OFFICE CEILING.
- 11 PROVIDE (2) EMPTY 2" CONDUITS WITH PULL STRINGS FROM THE BASE BUILDING'S TELEPHONE AND DATA SERVICES ENTRANCE LOCATIONS TO THE SPACE ABOVE THE OFFICE CEILING. TERMINATE WITH CONDUIT BUSHING.
- 12 PROVIDE A SUITABLE LENGTH OF LIQUID-TIGHT CONDUIT TO THE EXHAUST FAN EF-1 TO ALLOW THE EXHAUST FAN TO HINGE COMPLETELY OPEN WHEN THE VIBROGLAD SYSTEM IS INSTALLED.
- 13 AFTER THE FAX LINE, POS, AND OFFICE EQUIPMENT IS INSTALLED PROVIDE CHILDPROOF RECEPTACLE COVERS ON UNUSED J-RECEPTACLES AT THE FAX LINE, POS, AND OFFICE.
- 14 PROVIDE ONE PHASE, ONE NEUTRAL, AND ONE GROUND CONDUCTOR FROM THE ICE MAKER TO THE REMOTE CONDENSING UNIT.
- 15 UNIT SHALL HAVE AN INTEGRAL, NON-FUSED DISCONNECT SWITCH.
- 16 PROVIDE 3" CONDUIT [EMT, IMC, OR RMC] THROUGH ROOF. TERMINATE WITH WEATHERHEAD EVEN WITH TOP OF PARAPET FOR FUTURE CELL BOOSTER. SECURE CONDUIT TO STRUCTURE TO SUPPORT FUTURE ANTENNA INSTALLATION. PROVIDE 1/4" X 2" X 10" 16-HOLE GROUNDING BUSBAR (BUNBY BMB4230A OR EQUIVA) MOUNTED TO CONDUIT ABOVE ROOF FOR FUTURE CONNECTION OF LIGHTNING ARRESTORS. PROVIDE #2 CU GROUND FROM BUSBAR TO MAIN ELECTRODE GROUNDING CONDUCTOR.
- 17 INSTALL THE BYPASS DISTRIBUTION PANEL (BDP) FURNISHED BY THE TENANT. INSTALL PER THE MANUFACTURER'S INSTALLATION INSTRUCTIONS AND DETAIL 3/E710.
- 18 ROUGH-INS TO SERVE LINE AND POS EQUIPMENT ARE UNDERGROUND. COORDINATE ROUGH-IN REQUIREMENTS AND LOCATIONS WITH EQUIPMENT MANUFACTURER PRIOR TO ROUGH-IN.
- 19 ROOF TOP UNIT SHALL HAVE AN INTEGRAL UNIT-MOUNTED GFCI RECEPTACLE. PROVIDE CONNECTION TO CIRCUIT SHOWN.
- 20 ICE MAKER RECEPTACLES SHALL BE CONCEALED BEHIND THE ICE MAKER. COORDINATE LOCATION WITH ACTUAL WIDTH OF ICE MAKER.
- 21 PROVIDE VERTICAL METAL DIE CAST WEATHERPROOF WHILE IN USE OUTLET COVER ON RECEPTACLES AT COOK LINE. COVER SHALL BE INTERMATIC WP103DMX FOR SINGLE GANG BOXES AND WP103DMX FOR DOUBLE GANG BOXES. NO SUBSTITUTIONS SHALL BE ACCEPTED.
- 22 LABEL BATTERY-PROTECTED RECEPTACLES "BATTERY-PROTECTED. DISCONNECT AT PANEL BDP."
- 23 LABEL MAIN DISCONNECT SWITCH AND PANEL A "WARNING: BATTERY-PROTECTED RECEPTACLES IN USE. DISCONNECT AT PANEL BDP."
- 24 PROVIDE A NEMA 5-20P FLANGED INLET (LEVITON MODEL #15378-C) AND A SINGLE NEMA 5-20R RECEPTACLE IN OFFICE FOR CONNECTION TO A CENTRAL UPS SYSTEM. CONNECT THE FLANGED INLET AND THE SINGLE RECEPTACLE TO THE TERMINAL BLOCK IN THE BDP PER THE MANUFACTURER'S INSTRUCTIONS. PROVIDE FINAL CONNECTION FROM FLANGED INLET TO THE OUTPUT OF THE UPS USING A 2' LONG 20A EXTENSION CORD. PLUG THE UPS INTO THE SINGLE RECEPTACLE.
- 25 CONNECT RESTROOM EXHAUST FAN TO CIRCUIT SHOWN THROUGH THE LIGHTING CONTROL PANEL (LCP).
- 26 INSTALL 16/2 SPEAKER WIRE FURNISHED BY MSS. INSTALL SPEAKER WIRE BETWEEN SPEAKERS IN THE DINING ROOM AS SHOWN TO THE VOLUME CONTROL IN THE KITCHEN WITH 3 FEET OF SLACK AT EACH END. SEE ARCHITECTURAL PLANS FOR SPEAKER LOCATIONS. ADJUST EACH SPEAKER 70V TAP SETTINGS TO BE 15 WATTS.
- 27 PROVIDE POWER CONNECTIONS TO ISLAND PREP TABLE PER DETAIL 2/E710. PROVIDE GFCI DUPLEX RECEPTACLES IN TWO J-BOXES INTEGRAL TO PREP TABLE FOR HOT HOLDING CABINET AND GENERAL RECEPTACLE.
- 28 PROVIDE GFCI RECEPTACLE AND J-BOX AND INSTALL CO2 ALARM FURNISHED BY COZAS AS SHOWN IN DETAIL 4/E710.

**ELECTRICAL POWER PLAN NOTES**

- 29 PROVIDE J-BOX AND INSTALL CO2 ALARM REMOTE DISPLAY UNIT FURNISHED BY COZAS AS SHOWN IN DETAIL 4/E710.
- 30 INSTALL WALK-IN-COOLER EXTERNAL READOUT THERMOMETER REMOTE PROBE ON WALL OPPOSITE FROM DOOR AS SHOWN. THE THERMOMETER PROBE WIRE ABOVE WALK-IN COOLER CEILING PANELS. SEAL PENETRATIONS THROUGH THE CEILING PANELS, AND SECURE VERTICAL PROBE WIRE TIGHT TO WALLS. NO EXCESS PROBE WIRE SHALL BE WITHIN THE WALK-IN COOLER.
- 31 PROVIDE RECEPTACLE FOR RESTROOM HAND SINK FAUCET AS SHOWN IN DETAIL 14/P700.
- 32 PROVIDE 4" SQUARE J-BOX ON EXTERIOR WALL FOR MOUNTING OF EXTERIOR CAMERA. SEE ARCHITECTURAL ELEVATION FOR EXACT HEIGHT AND LOCATION. PROVIDE 3/4" CONDUIT WITH PULLSTRING FROM J-BOX TO ABOVE LAY-IN CEILING AREA IN KITCHEN. J-BOX SHALL NOT BE SURFACE MOUNTED. BASE OF CAMERA SHALL BE MOUNTED FLUSH TO EXTERIOR WALL FINISH.
- 33 PROVIDE 1" CONDUITS FROM LOW-VOLTAGE J-BOXES AT POS COUNTER CONCEALED WITHIN THE SERVE LINE WIRING CHASE TO THE WALL, THEN CONCEALED WITHIN THE WALL AND ABOVE THE CEILING TO ABOVE THE OFFICE CEILING.
- 34 INSTALL VEHICLE DETECTOR SYSTEM FURNISHED BY TFS SURFACE-MOUNTED ON WALL IN ACCESSIBLE LOCATION ABOVE CEILING AND CONNECT TO STROBE/CHIME AND DETECTOR LOOP PER THE MANUFACTURER'S INSTALLATION INSTRUCTIONS. MAKE FINAL ADJUSTMENTS TO LOOP SENSITIVITY PER THE MANUFACTURER'S INSTRUCTIONS. ONCE ALL COMPONENTS ARE INSTALLED AND OPERATIONAL THE CHIME/STROBE LIGHT SHOULD STAY ILLUMINATED AND THERE SHOULD BE A SINGLE CHIME WHEN A VEHICLE DRIVES OVER OR STOPS ON LOOP.
- 35 SEAL INTERIOR AND EXTERIOR OF CONDUITS THAT PASS THROUGH THE WALK-IN COOLER ENVELOPE PER THE IEC.
- 36 PROVIDE ISLAND PREP TABLE FOOD WARMER RECEPTACLE WITH GROUND PIN TOWARDS THE BOTTOM OF THE RECEPTACLE.
- 37 INSTALL TRANSFORMER FURNISHED BY TUV WITH THE REME HALO AIR PURIFIER IN THE JUNCTION BOX ON THE EXTERIOR OF THE RTU PER DETAIL 6/M700. CONNECT LINE SIDE OF THE TRANSFORMER TO THE RTU SERVICE RECEPTACLE CIRCUIT SO THAT REME HALO RUNS CONTINUOUSLY. CONNECT THE LOW VOLTAGE SIDE OF THE TRANSFORMER TO THE REME HALO USING THE INCLUDED BARREL PLUG.
- 38 PROVIDE (2) 10"x10"x4" JUNCTION BOXES (J-BOX #1/J-BOX #2) ON THE WALL ABOVE PANELBOARDS 6" BELOW THE LAY-IN CEILING AND MOUNTED ADJACENT TO EACH. PROVIDE CONDUITS AND WIRING SHOWN IN DETAIL 8/E710. TENS SHALL PROVIDE GRIDPOINT 3 PHASE METER AND TRANSFORMER WITHIN J-BOX #1 AND GRIDPOINT (CON/MUB) WITHIN J-BOX #2. SEE GRIDPOINT INSTALLATION SHEET FOR DETAILS.
- 39 PROVIDE HORIZONTAL SINGLE-GANG J-BOX BELOW FUTURE GRIDPOINT CONTROLLER LOCATION. PROVIDE CONDUITS AND WIRING AS SHOWN IN DETAIL 8/E710.
- 40 INSTALL WIRED DOOR BUZZER AT 96" AFF. SEE ARCHITECTURAL DOOR EQUIPMENT FOR EQUIPMENT INFORMATION. CONNECT TO CIRCUIT SHOWN THROUGH THE TRANSFORMER FURNISHED WITH THE DOOR BUZZER. PROVIDE WIRING TO A BUTTON ADJACENT TO THE SERVICE DOOR AND CONNECT PER THE MANUFACTURER'S INSTALLATION INSTRUCTIONS.
- 41 CONNECT BATHROOM SANITIZER TO CIRCUIT SHOWN SO THAT IT IS ENERGIZED AT ALL TIMES.
- 42 PROVIDE POWER AND LOW VOLTAGE CONNECTIONS TO DISH SANITIZING MACHINE PER DETAIL 7/E710. CONNECT THE DETERGENT DISPENSER TO THE DISH MACHINE USING THE INCLUDED WIRING HARNESS PER THE MANUFACTURER'S INSTALLATION INSTRUCTIONS.
- 43 PROVIDE RECEPTACLE FOR 2 DOOR AND 1 DOOR REFRIGERATORS WITH GROUND PINS TOWARDS THE BOTTOM OF THE RECEPTACLE.
- 44 PROVIDE CORD AND NEMA 5-30P PLUG FROM UTENSIL COUNTER ICE MAKER, THROUGH UTENSIL COUNTER, TO ICE MAKER RECEPTACLE.
- 45 LABEL UTENSIL COUNTER RECEPTACLES "TRACTOR BEVERAGE," "ICE MAKER/IMSB," AND "SODA FOUNTAIN".
- 46 LABEL RECEPTACLE "BUG INSECT TRAP".
- 47 PROVIDE POWER CONNECTIONS TO ISLAND PREP TABLE PER DETAIL 2/E710. PROVIDE GFCI DUPLEX RECEPTACLE IN THE J-BOX INTEGRAL TO PREP TABLE FOR UNDERCOUNTER REFRIGERATOR. PROVIDE FINAL CONNECTION TO CARVING STATION HEATER.
- 48 IF NEUTRAL CONDUCTOR IS NOT NEEDED FOR SERVE LINE HOT FOOD SERVER TERMINATE NEUTRAL IN JUNCTION BOX.
- 49 PROVIDE A TWO-CONDUCTOR LOW-VOLTAGE WIRE IN 3/4" C. AND (4) #12, #12 R, #12 G, IN 1" C. FROM MALU-1 TO THE HOOD CONTROL PANEL PER THE MANUFACTURER'S INSTALLATION INSTRUCTIONS.
- 50 PROVIDE HORIZONTAL SINGLE-GANG J-BOX FOR DATA JAC AS SHOWN FOR KRONOS TIME CLOCK.
- 51 PROVIDE A RECESSED J-BOX AT 56" AFF FOR THE INSTALLATION OF THE SECURITY SYSTEM KEYPAD WITH A 1/2" CONDUIT TO ABOVE THE LAY-IN CEILING. TERMINATE CONDUIT WITH A CONDUIT BUSHING.
- 52 PROVIDE A RECESSED SINGLE-GANG J-BOX ABOVE DOOR AND 3" IN FROM LATCH SIDE OF DOOR FOR THE INSTALLATION OF THE SECURITY SYSTEM DOOR CONTACT WITH A 1/2" CONDUIT TO ABOVE THE LAY-IN CEILING. TERMINATE CONDUIT WITH A CONDUIT BUSHING.



**POWER ROOF PLAN**  
1/8" = 1'-0"



**POWER FLOOR PLAN**  
1/4" = 1'-0"

**NATIONAL**  
ELECTRICAL ENGINEERING  
4635 Trieman Blvd, Suite 250  
Hilliard, Ohio 43026  
Phone: (614) 751-9610  
Fax: (614) 552-5240  
Contact: Andy Jansoski  
(614) 328-2028  
ajansoski@nationalelectrical.com

**FOR CONSTRUCTION**

CHIPOTLE MEXICAN GRILL, INC.  
1610 E. JACKSON  
MACOMB, IL 61455

CHIPOTLE MEXICAN GRILL, INC.  
PO BOX 18356  
COLUMBUS, OH 43218-2566  
TELEPHONE: 614.392.2400  
INTERNET: WWW.CHIPOTLE.COM

STORE NO.: 5427  
MACOMB  
1610 E. JACKSON  
MACOMB, IL 61455

Issue/Rev	Date	Description
07.10.2024	PERMIT SET	
09.03.2024	BID SET	
02.07.2025	CONSTRUCTION SET	
02.07.2025	OB UPDATES	

Drawn: [ ]  
Checked: [ ]  
AJJ AJJ

Project No:  
2401083

Contract:  
**ELECTRICAL POWER PLAN**

**E110**





