

FOR QUESTIONS, CALL THE
Maryland Mechanical
REGION 76
PHONE: (800) 988 - 0881
EMAIL: reg76@captiveaire.com

PATENT NUMBERS
AC-PSP (UNITED STATES) - US PATENT 7963830 B2.
AC-PSP WALL (CANADA) - CA PATENT 2820509.
AC-PSP ISLAND (CANADA) - CA PATENT 2520330.

HOOD INFORMATION - JOB#7208396

HOOD NO	TAG	MODEL	MANUFACTURER	LENGTH	MAX COOKING TEMP	TYPE	APPLIANCE DUTY	DESIGN CFM/FT	TOTAL EXH CFM	EXHAUST PLENUM						HOOD CONSTRUCTION	HOOD CONFIG				
										WIDTH	LENG	HEIGHT	DIA	CFM	VEL		SP	MUA CFM	AC CFM	END TO END	ALONE
1	33	6024 ND-2-ACPSP-F	CAPTIVEAIRE	11' 7"	600 DEG	I	HEAVY	225	2606			4'	16'	2606	1866	-0.968"	2163	748	430 SS WHERE EXPOSED	ALONE	ALONE

HOOD INFORMATION

HOOD NO	TAG	TYPE	FILTER(S)			EFFICIENCY @ 7 MICRONS	QTY	LIGHT(S)			UTILITY CABINET(S)			FIRE SYSTEM HANGING PIPING	HOOD WEIGHT
			QTY	HEIGHT	LENGTH			TYPE	TYPE	WIRE GUARD	LOCATION	SIZE	FIRE SYSTEM		
1	33	CAPTRATE SOLD FILTER	8	20"	16'	85% SEE FILTER SPEC	6			L55 SERIES E26	NO			YES	1024 LBS

HOOD OPTIONS

HOOD NO	TAG	OPTION
1	33	FIELD WRAPPER 10.00' HIGH FRONT, LEFT, RIGHT. LEFT END STANDOFF (FINISHED) 1" WIDE 60" LONG INSULATED. RIGHT END STANDOFF (FINISHED) 1" WIDE 60" LONG INSULATED. INSULATION FOR TOP OF HOOD. INSULATION FOR BACK OF HOOD. NYC CONSTRUCTION. LEFT VERTICAL END PANEL 27" TOP WIDTH, 21" BOTTOM WIDTH, 80" HIGH INSULATED 430 SS. RIGHT VERTICAL END PANEL 27" TOP WIDTH, 21" BOTTOM WIDTH, 80" HIGH INSULATED 430 SS.

PERFORATED SUPPLY PLENUM(S)

HOOD NO	TAG	POS	LENGTH	WIDTH	HEIGHT	TYPE	RISER(S)			
							WIDTH	LENG	DIA	CFM
1	33	Front	141'	26'	6'	MUA	12"	28"	721	0.196"
						MUA	12"	28"	721	0.196"
						MUA	12"	28"	721	0.196"
						AC	8"	24"	374	0.082"
						AC	8"	24"	374	0.082"

WALL-MOUNT UTILITY CABINET

HOOD NO	LOCATION	SIZE	UTILITY CABINET(S)			WEIGHT
			FIRE SYSTEM	ELECTRICAL	SWITCHES	
1	WALL MNT	12"x54"x24"	TANK FS	4.0/4.0	DCV-1111 1 LIGHT 1 FAN	340.00 LBS

GREASE DUCT & CHIMNEY SPECIFICATIONS:
PROVIDE GREASE DUCT EQUAL TO CAPTIVEAIRE SYSTEMS MODEL "DW" ROUND 20 GAUGE 430 STAINLESS STEEL DUCTWORK. MODEL "DW" IS LISTED TO UL-1978 AND IS INSTALLED USING "V" CLAMP LOCKING CONNECTIONS SEALED WITH 3M FIRE BARRIER 2000 PLUS. MODEL "DW" DOES NOT REQUIRE WELDING PROVIDING IT HAS BEEN INSTALLED PER THE MANUFACTURES INSTALLATION GUIDE.
PROVIDE RATED ACCESS DOORS AT EVERY CHANGE IN DIRECTION AND EVERY 12' ON CENTER. PER MANUFACTURES LISTING MODEL "DW" HORIZONTAL RUNS LESS THAN 75 FT. CAN BE SLOPED 1/16" PER 12", HORIZONTAL RUNS MORE THAN 75 FT. CAN BE SLOPED 3/16" PER 12". DUCT SHOULD BE SLOPED AS MUCH AS POSSIBLE TO REDUCE THE CHANCE OF GREASE ACCUMULATION IN HORIZONTAL RUNS.

IF THE DUCT OR CHIMNEY IS WITHIN 18 INCHES OF COMBUSTIBLE MATERIAL, PROVIDE UL-2221 OR UL-103 HT LISTED DOUBLE WALL GREASE DUCT OR DOUBLE WALL CHIMNEY EQUAL TO CAPTIVEAIRE SYSTEMS MODEL "DW- 2R, 2R TYPE HT, 3R, OR 3Z" ROUND 20 GAUGE 430 STAINLESS INNER DUCT INSULATED WITH A 24 GAUGE 430 STAINLESS OUTER SHELL.

CAPTIVEAIRE SYSTEMS RECOMMENDS THE USE OF LISTED, PRE-FABRICATED ROUND GREASE EXHAUST DUCT TO REDUCE STATIC PRESSURE IN THE SYSTEM, MINIMIZE INSTALLATION AND INSPECTION TIMES, AND ENSURE DUCT IS LIQUID TIGHT

VERIFY CEILING HEIGHT
____' - ____"

HEIGHT REQUIRED TO VERIFY THAT HOOD FITS SPACE AND TO SIZE THE ENCLOSURE PANELS

HVAC DISTRIBUTION NOTE
HIGH VELOCITY DIFFUSERS OR HVAC RETURNS SHOULD NOT BE PLACED WITHIN TEN (10) FEET OF THE EXHAUST HOOD. PERFORATED DIFFUSERS ARE RECOMMENDED.

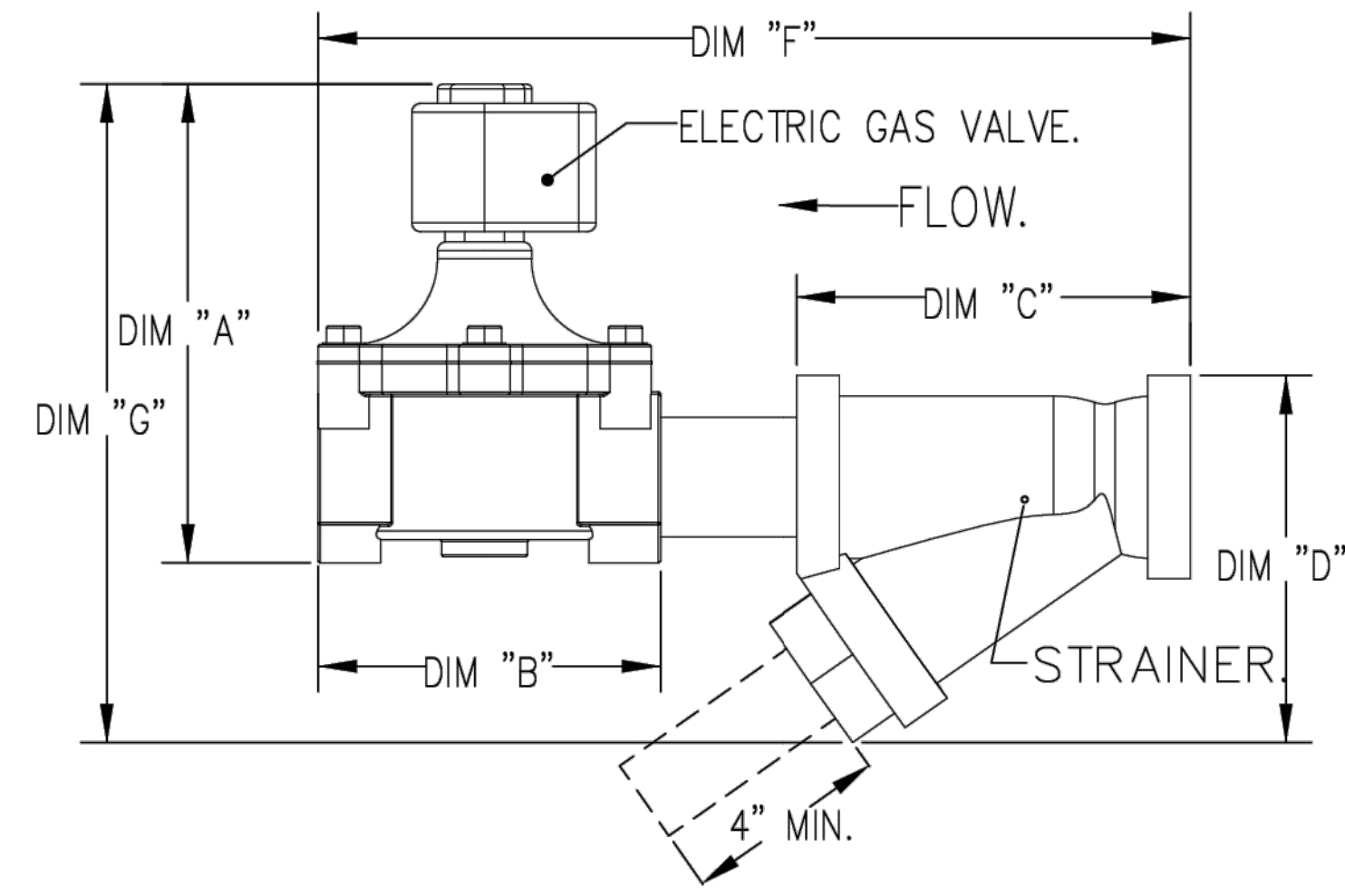
CUSTOMER APPROVAL TO MANUFACTURE:
APPROVED AS NOTED
APPROVED WITH NO EXCEPTION TAKEN
REVISE AND RESUBMIT
SIGNATURE: _____ DATE: _____
YOUR TITLE: _____

TYPE	SIZE	VOLTAGE	GAS VALVE SIZING		GAS VALVE DIMENSIONS						INSTALLATION	PART NUMBERS					
			MIN. INLET PRESSURE	MAX. INLET PRESSURE	DIM "A"	DIM "B"	DIM "C"	DIM "D"	DIM "E"	DIM "G"		MOUNTING ORIENTATION	GAS VALVE PART NUMBER	STRAINER PART NUMBER	GAS VALVE/STRAINER KIT		
ELECTRICAL	2"	120 VAC	0 PSI (0 IN.W.C.)	5 PSI (1.38 IN.W.C.)	2,940,500 BTU/HR	FLOW AT 1 IN.W.C. DROP NATURAL GAS	1,908,048 BTU/HR	7-5/8"	6-3/8"	7-1/4"	7-13-16"	15-5/8"	13-15/16"	HORIZONTAL	8214280	4417R88	(SC)EJVA2

ELECTRIC GAS VALVES ONLY:
3/4"-2" 120VAC GAS VALVES CAN BE MOUNTED WITH THE SOLENOID IN ANY POSITION ABOVE HORIZONTAL.
2 1/2"-3" 120VAC GAS VALVES MUST BE MOUNTED WITH THE SOLENOID VERTICAL AND UPRIGHT.
2"VAC GAS VALVES MUST BE MOUNTED WITH THE SOLENOID VERTICAL AND UPRIGHT.

ALL GAS VALVES/STRAINERS:
PROPER CLEARANCE MUST BE PROVIDED IN ORDER TO SERVICE THE STRAINERS A MINIMUM OF 4" CLEARANCE DISTANCE MUST BE PROVIDED AT THE BASE OF THE STRAINER. CUSTOMER MUST VERIFY BTU CONSUMPTION AS WELL AS PRESSURE RATING. SPECIFIC GRAVITY OF NATURAL GAS = 0.64, SPECIFIC GRAVITY OF LP = 1.52.

CALCULATIONS:
TO CALCULATE GAS FLOW FOR OTHER THAN 1 IN.W.C. PRESSURE DROP:
NEW BTU/HR = (BTU/HR AT 1 IN.W.C. PRESSURE DROP) X NEW PRESSURE DROP^{0.85}
TO CALCULATE GAS FLOW FOR OTHER THAN 0.64 SPECIFIC GRAVITY:
NEW BTU/HR = (BTU/HR AT 0.64) X (0.64 / NEW SPECIFIC GRAVITY)^{0.85}



SPECIFICATION: CAPTRATE® GREASE-STOP® SOLD FILTER

THE CAPTRATE GREASE-STOP SOLD FILTER IS A SINGLE-STAGE FILTER FEATURING A UNIQUE S-BAFFLE DESIGN IN CONJUNCTION WITH A SLOTTED REAR BAFFLE DESIGN, TO DELIVER EXCEPTIONAL FILTRATION EFFICIENCY.

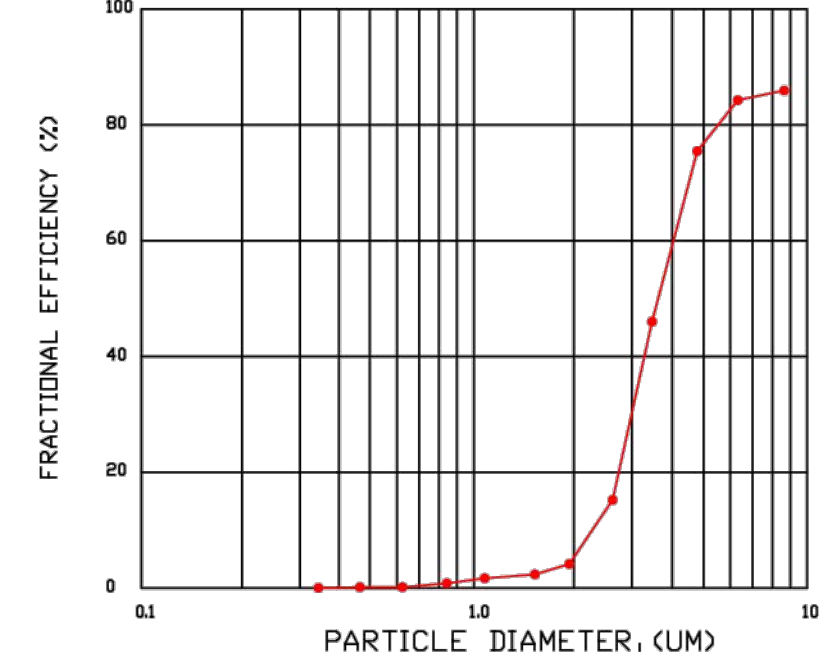
FILTER IS STAINLESS STEEL CONSTRUCTION, AND SIZED TO FIT INTO STANDARD 2-INCH DEEP HOOD CHANNEL(S).

UNITS SHALL INCLUDE STAINLESS STEEL HANDLES AND A FASTENING DEVICE TO SECURE THE TWO COMPONENTS WHEN ASSEMBLED.

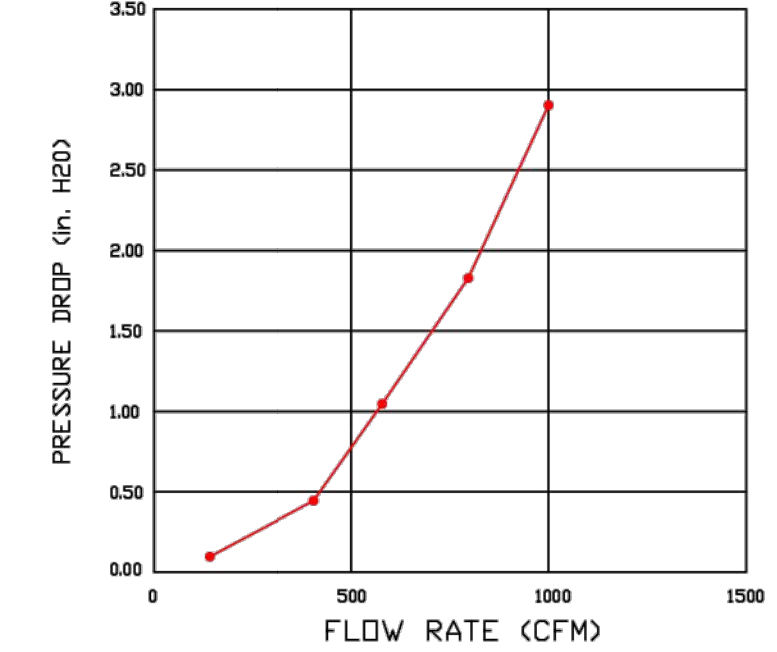
GREASE EXTRACTION EFFICIENCY PERFORMANCE SHALL REMOVE AT LEAST 75% OF GREASE PARTICLES FIVE MICRONS IN SIZE, AND 85% GREASE PARTICLES SEVEN MICRONS IN SIZE AND LARGER, WITH A CORRESPONDING PRESSURE DROP NOT TO EXCEED 1.0 INCHES OF WATER GAUGE.

THE CAPTRATE GREASE-STOP SOLD WAS TESTED TO ASTM STANDARD ASTM F2519-05. MANUFACTURER APPROVED FOR USE IN SOLID FUEL APPLICATIONS AS A SPARK ARRESTER.

EFFICIENCY VS. PARTICLE DIAMETER



PRESSURE DROP VS. FLOW RATE



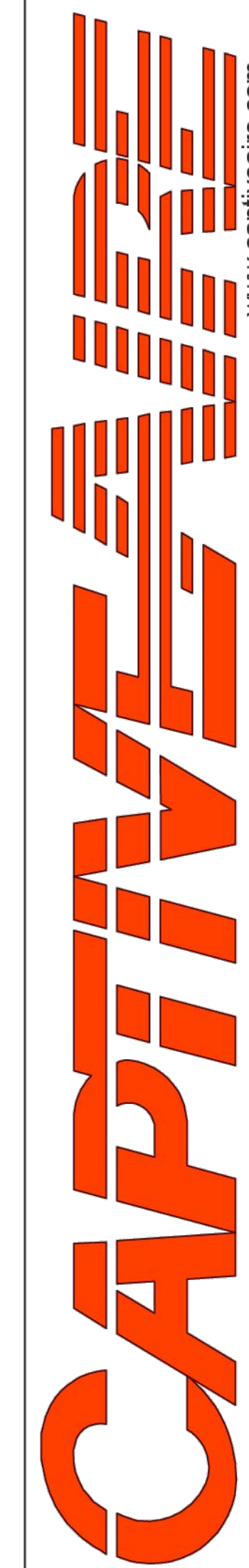
CAPTRATE FILTERS ARE BUILT IN COMPLIANCE WITH:

NFPA #96
NSF STANDARD #2
UL STANDARD #1046
INT. MECH. CODE (IMC)
ULC-S649.



REVISIONS

NO.	DESCRIPTION	DATE



8120 Woodmont Avenue, Suite 720, Bethesda, MD, 20814 PHONE: (800) 988 - 0881 FAX: 912275951 EMAIL: reg76@captiveaire.com

Cava - New York, NY (Columbus)_RI
977 8th Avenue,
New York, NY, 10019

DATE: 12/17/2024

DWG.#: 7208396

DRAWN BY: ABS-76

SCALE: NTS

MASTER DRAWING

SHEET NO. 1

ISSUE NO	REVISION	DATE
R0	SD SUBMISSION SET	08-12-2024
R1	DOCLAND REVIEW SET	09-10-2024
R2	ISSUED FOR BID	11-22-2024
R3	ADDENDUM	12-17-2024
	ISSUED FOR CONSTRUCTION	04-26-2025

LEGAL: THESE PLANS AND SPECIFICATIONS, AS WELL AS NEW YORK DESIGN ARCHITECTS, LLP NAME AND LOGO, TRADEMARKS AND DESIGN ARE THE EXCLUSIVE PROPERTY OF NEW YORK DESIGN ARCHITECTS, LLP. ANY REPRODUCTION, MODIFICATION, DISSEMINATION OR USE OF THESE MATERIALS OR ANY PORTION OF THEM WITHOUT PRIOR WRITTEN CONSENT IS STRICTLY PROHIBITED. CONTRACTOR AND/OR SUBCONTRACTOR SHALL NOT SCALE OFF THESE DRAWINGS FOR ANY REASONS. THE ARCHITECT/ENGINEER OF RECORD TAKE NO RESPONSIBILITY FOR WORK BEING PERFORMED BY SCALING OFF DRAWINGS. ALL DIMENSIONS SHALL BE LAID OUT IN ACCORDANCE TO BUILDING DEPT. APPROVED DRAWINGS. ANY DISCREPANCIES WITH FIELD DIMENSIONS AND DIMENSIONS SHOWN ON APPROVED DRAWINGS SHALL BE MADE PRIOR TO THE ARCHITECT/ENGINEER OF RECORD. PRIOR TO COMMENCEMENT OF WORK, INDICATES ACCEPTANCE OF ALL COMPONENTS INDICATED ON APPROVED DRAWINGS. THIS DOCUMENT IS PROTECTED UNDER TITLE 19 US CODE. ANY ALTERATION BY ANY PERSON OTHER THAN THE AUTHOR OF SUCH DOCUMENT IS ILLEGAL, AND SUBJECT TO PROSECUTION. (01/18/10/17)



ARCHITECT: new york design ARCHITECTS, LLP

GIUSEPPE R. ANZALONE, AIA
JOSEPH J. SBERINA, AIA
175 WEST BROADWAY, NEW YORK, NY 10013
TEL: (212) 680 0140, FAX: (212) 688 9548
www.newyorkdesign.com

ADDRESS: 1000 8TH AVENUE (a.k.a. 4 COLUMBUS CIRCLE) NEW YORK, NY 10019

PROJECT NO: 23195 DATE: 02/26/2024
PARTNER IN CHARGE: JS PROJECT MANAGER: IS DRAWN BY: HN/DT

SHEET CONTENTS: MECHANICAL KITCHEN EQUIPMENT SHEET 1 OF 10

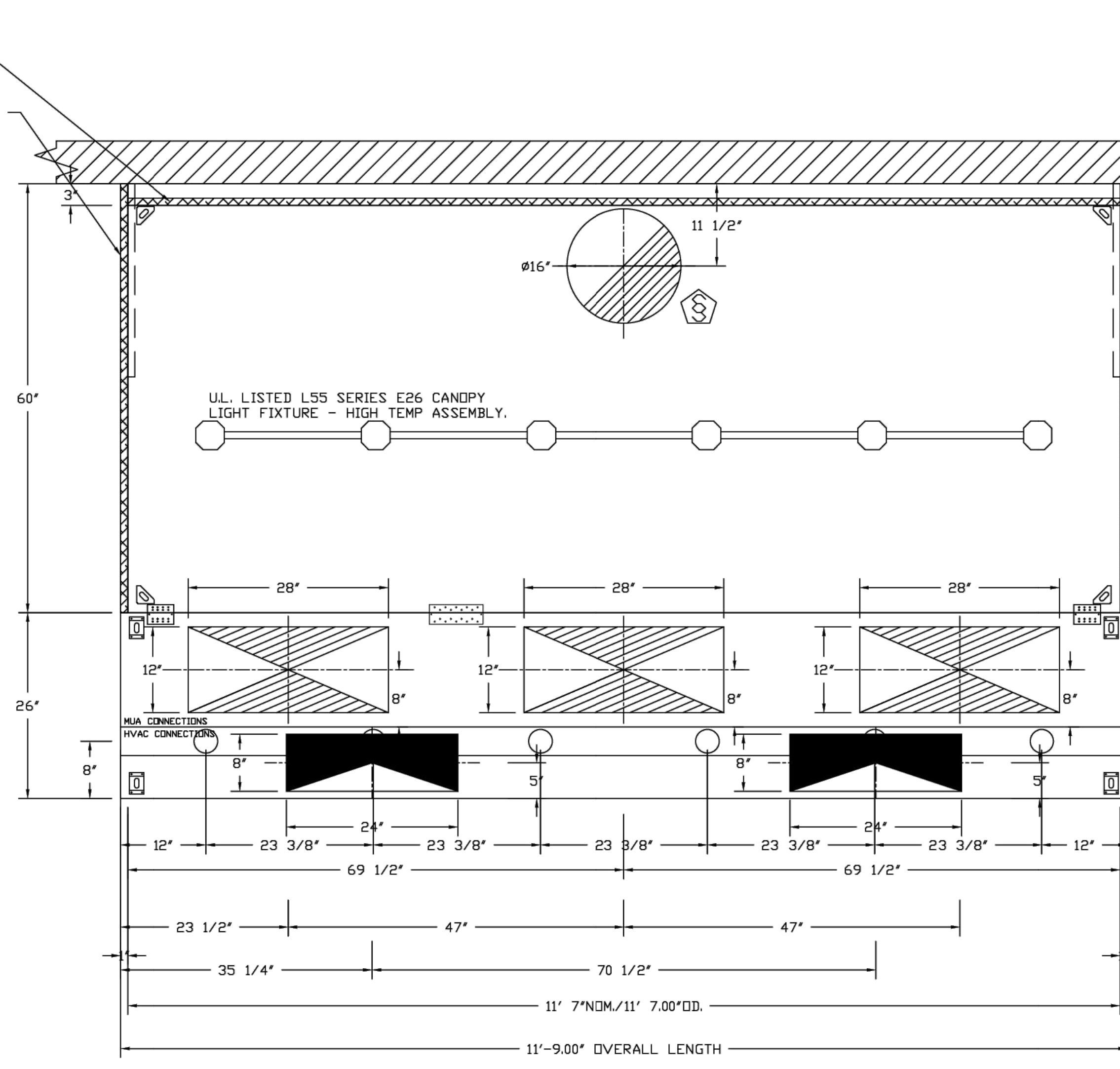
SHEET: M-500.00 PAGE NO: 07 of 16

ISSUED FOR CONSTRUCTION SET - 04/25/2025

CIB JOB NUMBER

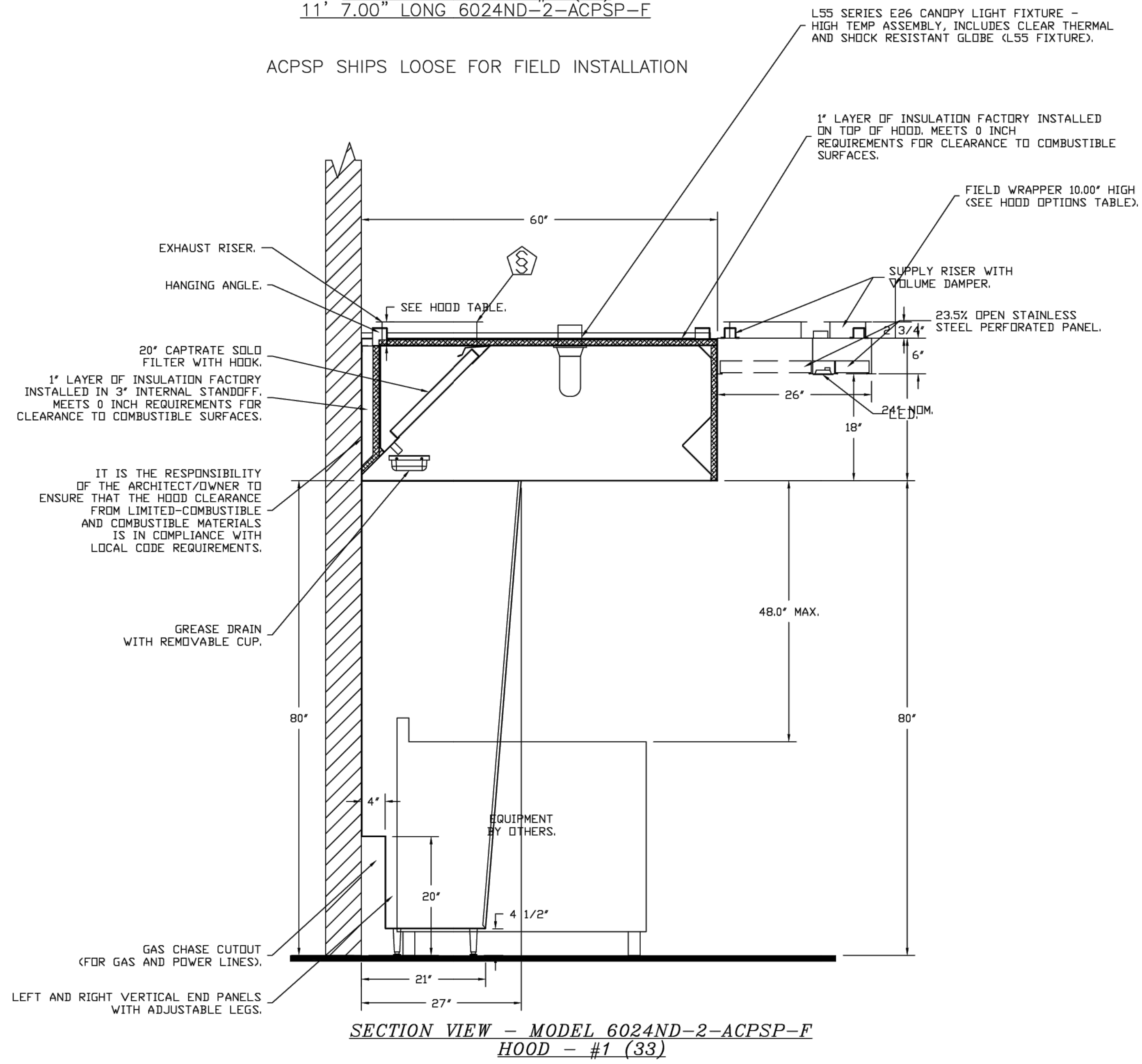
1" LAYER OF INSULATION FACTORY INSTALLED IN INTERNAL BACK STANDOFF. MEETS 0 INCH REQUIREMENTS FOR CLEARANCE TO COMBUSTIBLE SURFACES.

1" LAYER OF INSULATION FACTORY INSTALLED IN 100" END STANDOFF MEETS 0" REQUIREMENTS CLEARANCE TO COMBUSTIBLE SURFACES.

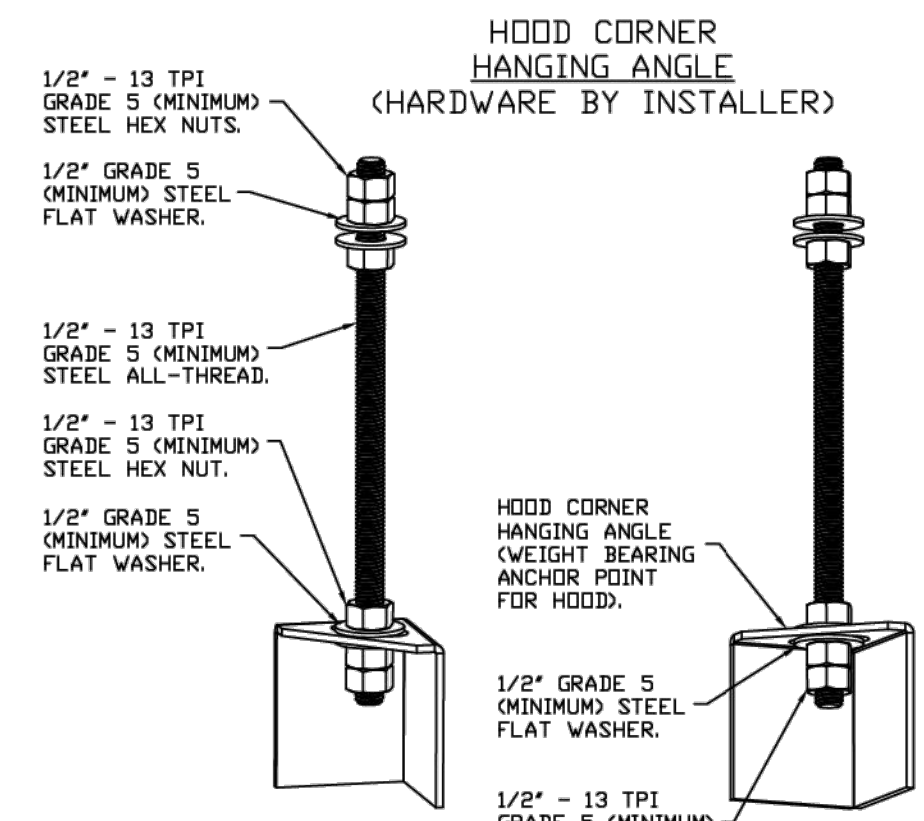


PLAN VIEW - HOOD #1 (33)
11' 7.00\"/>

ACPSP SHIPS LOOSE FOR FIELD INSTALLATION



SECTION VIEW - MODEL 6024ND-2-ACPSP-F
HOOD - #1 (33)



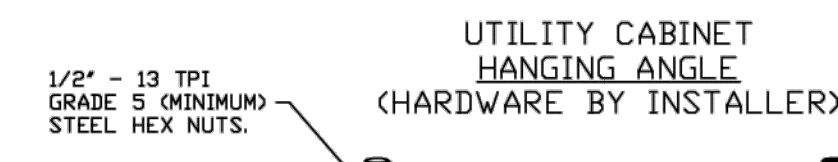
ASSEMBLY INSTRUCTIONS

HANGING ANGLE MUST BE SUPPORTED WITH 1/2\"/>

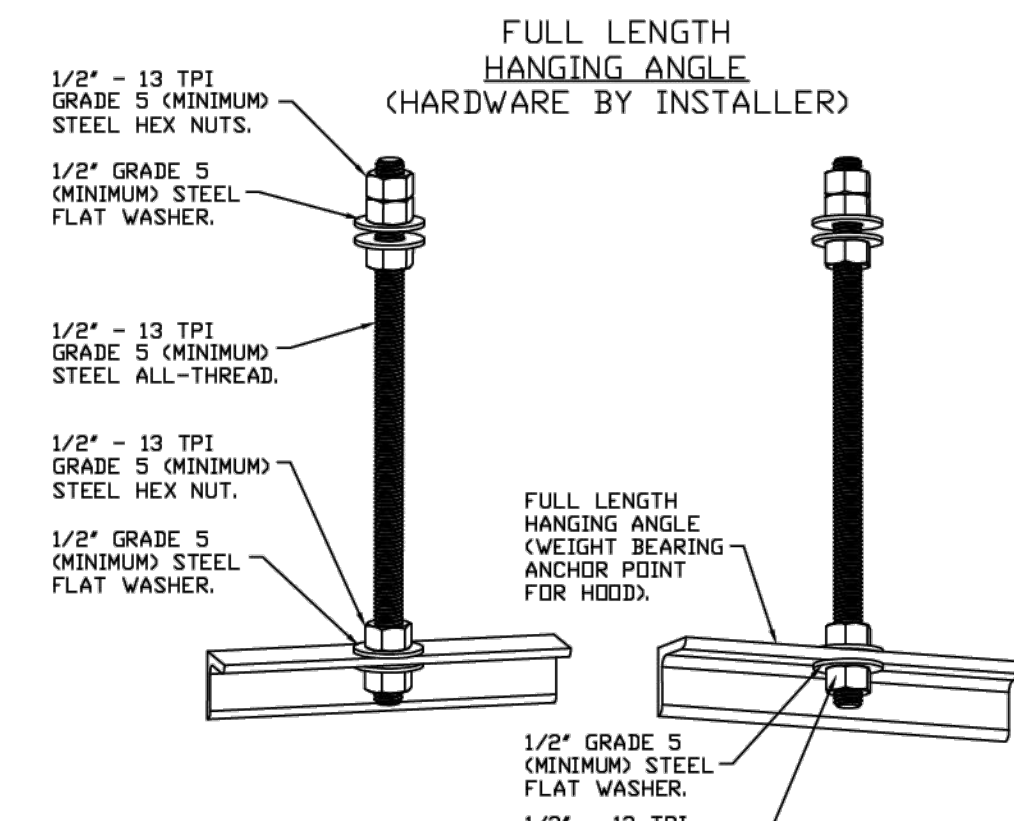
WALL-MOUNT UTILITY CABINET ASSEMBLY INSTRUCTIONS

CABINET TO BE HUNG BY OTHERS. SEE UTILITY CABINET SCHEDULE FOR CABINET SIZE.

HANGING ANGLE MUST BE SUPPORTED WITH 1/2\"/>

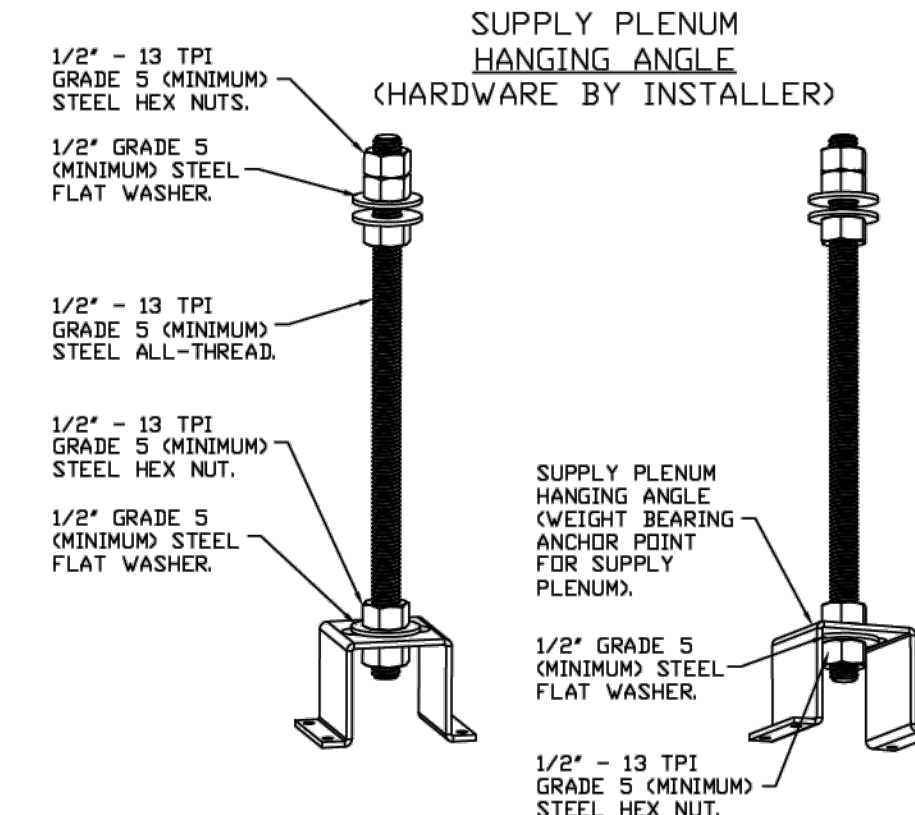


UTILITY CABINET HANGING ANGLE (HARDWARE BY INSTALLER)



ASSEMBLY INSTRUCTIONS

HANGING ANGLE MUST BE SUPPORTED WITH 1/2\"/>



ASSEMBLY INSTRUCTIONS

HANGING ANGLE MUST BE SUPPORTED WITH 1/2\"/>

CLEARANCE TO COMBUSTIBLES

HOODS #	SURFACE	*CLEARANCE
1	TOP	0"
	FRONT	0"
	BACK	0"
	LEFT	0"
	RIGHT	0"

* 0" CLEARANCE TO COMBUSTIBLES CONFORMS TO UL710 STANDARD.

REVISIONS

NO.	DESCRIPTION	DATE

CAPTIVE

Maryland Mechanical

8120 Woodmont Avenue, Suite 720, Bethesda, MD, 20814 PHONE: (800) 988-0881 FAX: 912279591 EMAIL: eng76@captiveme.com

Cava - New York, NY (Columbus)_RI
977 8th Avenue,
New York, NY, 10019

DATE: 12/17/2024

DWG.#: 7208396

DRAWN BY: ABS-76

SCALE: NTS

MASTER DRAWING

SHEET NO. 2

REV	NO	REVISION	DATE
R0	SD	SUBMISSION SET	08-12-2024
R1	DO	ISSUED FOR CONSTRUCTION	09-10-2024
R2	ISSUED FOR BID	11-22-2024	
R3	ADDENDUM 1	12-17-2024	
		ISSUED FOR CONSTRUCTION	04-26-2025

LEGAL: THESE PLANS AND SPECIFICATIONS, AS WELL AS ANY NEW YORK DESIGN ARCHITECTS, LLP NAME AND LOGO, TRANSMISSIONS AND DESIGN ARE THE EXCLUSIVE PROPERTY OF NEW YORK DESIGN ARCHITECTS, LLP. ANY REPRODUCTION, MODIFICATION, DISSEMINATION OR USE OF THESE MATERIALS OR ANY PORTION OF THEM WITHOUT PRIOR WRITTEN CONSENT IS STRICTLY PROHIBITED. CONTRACTOR AND/OR SUBCONTRACTOR SHALL NOT SCALE OFF THESE DRAWINGS FOR ANY REASONS. THE ARCHITECT/ENGINEER OF RECORD TAKE NO RESPONSIBILITY FOR WORK BEING PERFORMED BY SCALING OFF DRAWINGS. ALL DIMENSIONS SHALL BE LAID OUT IN ACCORDANCE TO BUILDING DEPT. APPROVED DRAWINGS. ANY DISCREPANCIES WITH FIELD DIMENSIONS AND DIMENSIONS SHOWN ON APPROVED DRAWINGS SHALL BE MADE WIRE TO THE ARCHITECT/ENGINEER OF RECORD. PRIOR TO COMMENCEMENT OF WORK, INDICATES ACCEPTANCE OF ALL COMPONENTS INDICATED ON APPROVED DRAWINGS. THIS DOCUMENT IS PROTECTED UNDER TITLE 17 US CODE. ANY ALTERATION BY ANY PERSON OTHER THAN THE AUTHOR OF SUCH DOCUMENT IS ILLEGAL AND SUBJECT TO PROSECUTION. (2018-10-17)

new york design
ARCHITECTS, LLP

CAVA

GIUSEPPE R. ANZALONE, AIA
JOSEPH J. SERRANO, AIA
175 WEST BROADWAY, NEW YORK, NY 10013
TEL: (212) 680 0140, FAX: (212) 658 9548
www.newyorkdesign.com

1000 8TH AVENUE
(a.k.a. 4 COLUMBUS CIRCLE)
NEW YORK, NY 10019

PROJECT NO: 23195 DATE: 02/26/2024
PARTNER IN CHARGE: JS PROJECT MANAGER: IS DRAWN BY: HN/DT

SHEET CONTENTS: MECHANICAL KITCHEN EQUIPMENT SHEET 2 OF 10

SHEET: M-501.00 PAGE NO: 08 of 16

ISSUED FOR CONSTRUCTION SET - 04/25/2025

FIRE SYSTEM INFORMATION - JOB#7208396

FIRE SYSTEM NO	TAG	TYPE	SIZE	MAX FP	DESIGN FP	INSTALLATION	
						SYSTEM	LOCATION ON HOOD
1		TANK FS	4.0/4.0	40	37	WALL UTILITY CABINET LEFT	N/A

GAS VALVE(S)

FIRE SYSTEM NO	TAG	TYPE	SIZE	SUPPLIED BY
1		SC ELECTRICAL	2.000	CAPTIVEAIRE SYSTEMS

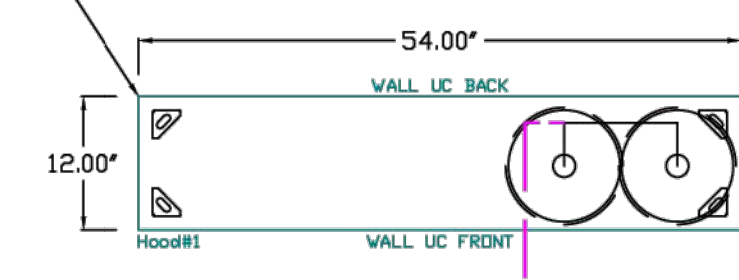
FIRE SYSTEM PARTS LIST KEY

FIRE SYSTEM NO	TAG	KEY NUMBER - PART DESCRIPTION	QTY BY FACTORY	QTY BY DIST
0	-	0 - TANK FIRE SUPPRESSION POST-DISCHARGE PROCEDURE UTILITY CABINET LABEL SHEET.	1	0
0	-	0 - TANK FIRE SUPPRESSION MAINTENANCE GUIDE UTILITY CABINET LABEL SHEET.	1	0
0	-	0 - 12-F28021-32144-0T-360 DUCT FIRE THERMOSTAT WITH 12 FOOT WIRE LEADS. NO. CLOSE ON TEMP RISE AT 360°F. (A0034310).	1	0
0	-	0 - 32-00002 QUIK SEAL - 1/2" (UL).	1	0
0	-	0 - 361091 3/8" BRASS PLUG.	3	0
0	-	0 - 4429K153 1/2" MALE NPT TO 1/2" FEMALE NPT ELBOW, BRASS.	2	0
0	-	0 - 4429K422 1/2" X 1/4" BRASS REDUCING BUSHING.	1	0
0	-	0 - 79425 3/8" NPT FEMALE TO 1/2" MALE PROGRESS ADAPTER.	3	0
0	-	0 - 79525 1/2" 90 PRO-PRESS ELBOW WITH 1/2" NPT FEMALE CONNECTION, VIEGA.	1	0
0	-	0 - 79580 1/2" X 1/2" PRO-PRESS TEE X 1/2" NPT FEMALE CONNECTION, VIEGA.	2	0
0	-	0 - 87-120042-001 SECONDARY ACTUATOR VALVE (SVA) - SINGLE ACTUATOR, REQUIRES PRIMARY RELEASE ACTUATOR, TANK FIRE SUPPRESSION.	1	0
0	-	0 - 87-120045-001 HOSE, SECONDARY ACTUATOR HOSE, 7.5' BRAIDED STAINLESS STEEL, TANK FIRE SUPPRESSION.	1	0
0	-	0 - 87-300001-001 TANK - PRESSURIZED TANK USED FOR TANK FIRE SUPPRESSION.	2	0
0	-	0 - 87-300030-001 PRIMARY ACTUATOR KIT (PAK) - ACTUATOR AND RELEASE, SOLENOID ASSEMBLY, ONE NEEDED PER FIRE SYSTEM, SUPERVISED, TANK FIRE SUPPRESSION.	1	0
0	-	0 - 87-300033-001 DIN CONNECTOR, CANFIELD PART #SJS60-201-EU0A, TANK FIRE SUPPRESSION, SUBMINATURE SOLENOID CONNECTION (CED VENDOR 30377).	1	0
0	-	0 - 87-300152-001 HARDWARE, SVA BOLTS, TANK FIRE SUPPRESSION.	8	0
0	-	0 - 9055455PC PRO PRESS 1/2 PRESS X PRESS 90 ELBOW LD.	5	0
0	-	0 - 9097200PC PRO PRESS PC611 1/2 PRESS TEE LD.	8	0
0	-	0 - 98694A115 HARDWARE, DATANKLOCK LOCKING BRACKET SQUARE NUTS 5/16" ZINC, TANK FIRE SUPPRESSION.	4	0
0	-	0 - A0034332 JUNCTION BOX FOR MANUAL PULL STATION. 1.5" DEEP BACK BOX, RED COLOR.	1	0
0	-	0 - A31484 1/4" NPT SCHRADER VALVE AND CAP, JB INDUSTRIES. 1/4" FLARE X 1/4" NPT HALF UNION. USED ON TANK SERVICE PORT.	1	0
0	-	0 - B1145 3/8" BLACK IRON 90 ELL.	3	0
0	-	0 - DATANKLOCK DISCHARGE ADAPTER TANK LOCKING PLATE FOR FIRE SYSTEM TANK INSTALLATION IN UTILITY CABINETS, TANK FIRE SUPPRESSION.	2	0
0	-	0 - SLPDCN-20FT SUPERVISED LOOP CONNECTION KIT. CONTAINS THE PARTS NEEDED TO CONNECT THE SUPERVISED LOOP BETWEEN HOODS WITH UPTO 19" GAP. KIT CONTAINS 22 FEET OF BLACK MG WIRE, 22 FEET OF TAN MG WIRE, 20 FEET OF FLEXIBLE CONDUIT, AND TWO 7/8" CONNECTORS.	1	0
0	-	0 - SLPDCN-30FT SUPERVISED LOOP CONNECTION KIT. CONTAINS THE PARTS NEEDED TO CONNECT THE SUPERVISED LOOP BETWEEN HOODS WITH UPTO 29" GAP. KIT CONTAINS 32 FEET OF BLACK MG WIRE, 32 FEET OF TAN MG WIRE, 30 FEET OF FLEXIBLE CONDUIT, AND TWO 7/8" CONNECTORS.	1	0
0	-	0 - TANK STRAP TANK STRAP - USED FOR TANK FIRE SUPPRESSION.	6	0
0	-	0 - TFS-UCTANKBRACKET TANK BRACKET FOR FIRE SYSTEM TANK INSTALLATION IN UTILITY CABINETS, TANK FIRE SUPPRESSION.	2	0
0	-	0 - WK-283952-000 DISCHARGE ADAPTER, TANK FIRE SUPPRESSION.	2	0
16	-	16 - 16 - 79210 1/2" X 3/8" NPT MALE ADAPTER, VIEGA.	8	0
16	-	16 - 16 - DL-F NOZZLE - TANK PROTECTION APPLIANCE COVERAGE NOZZLE (INCLUDES METAL BLOW OFF CAP, LANYARD, USED WITH CHROME-PLATED PIPE).	8	0
25	-	25 - 25 - QSA-3/8 QUIK SEAL - 3/8" (UL).	8	0
34	-	34 - 34 - A0034331 24VDC SINGLE ACTION MANUAL ACTUATION DEVICE (PUSH/PULL STATION) WITH PROTECTIVE COVER, ONE (1) NORMALLY OPEN CONTACT, RED COLOR.	1	0

NOTES

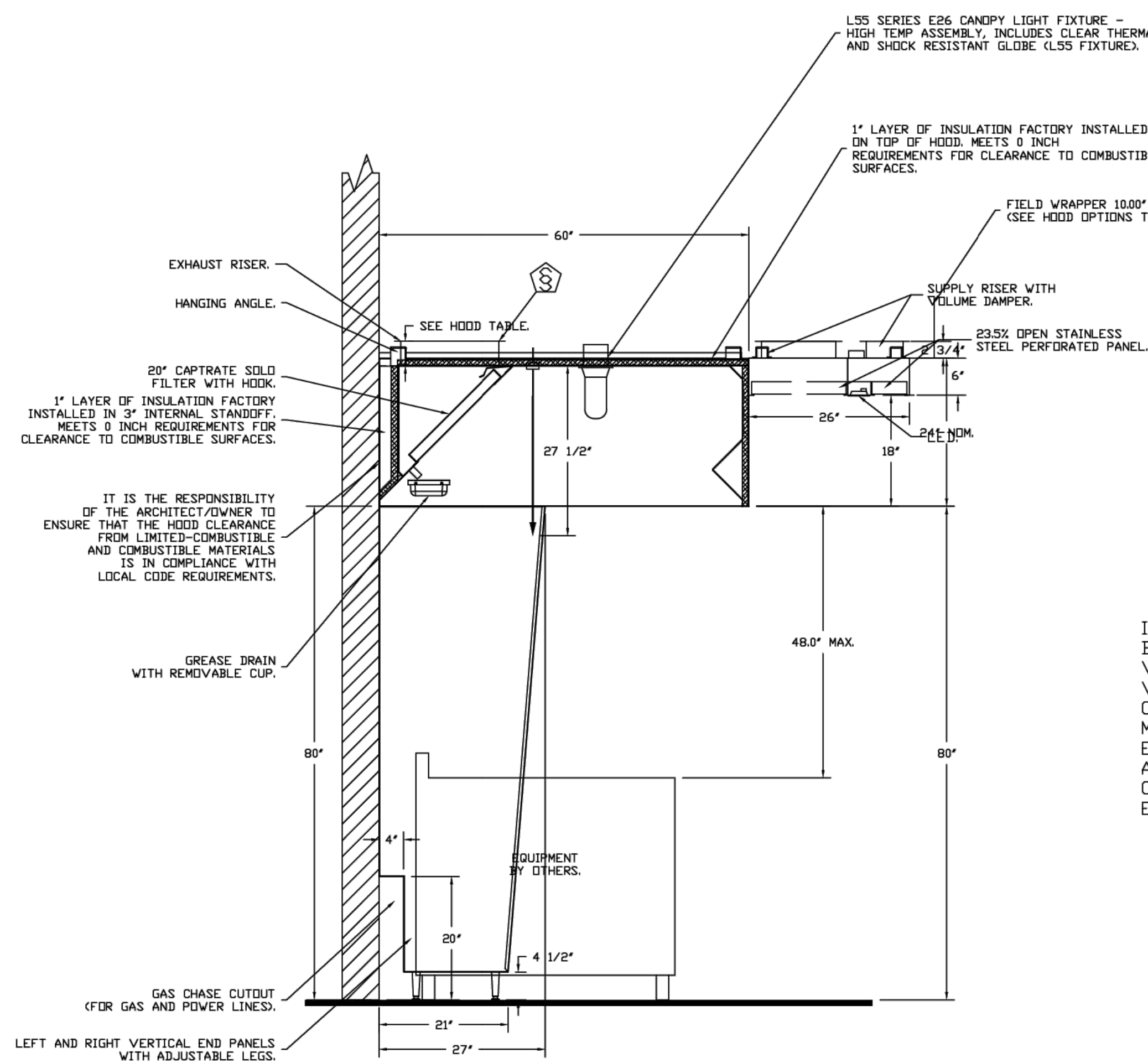
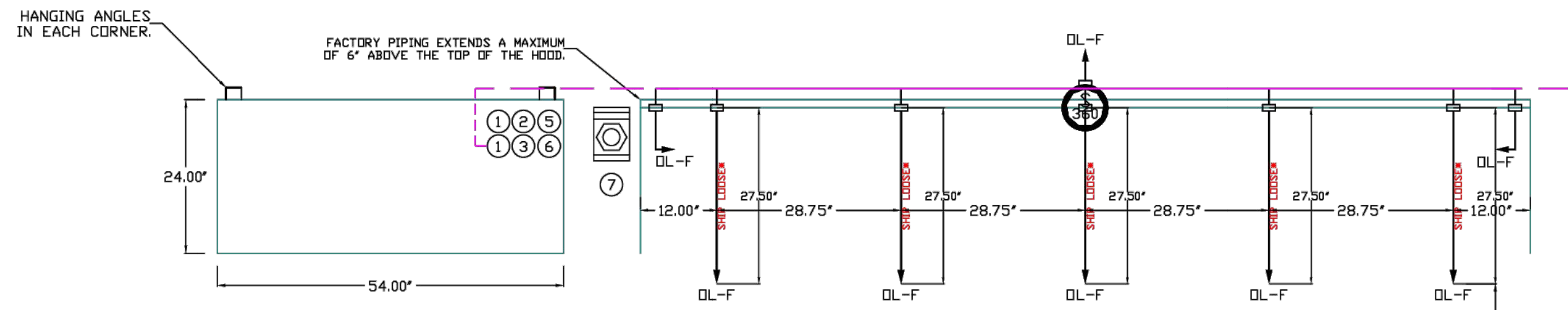
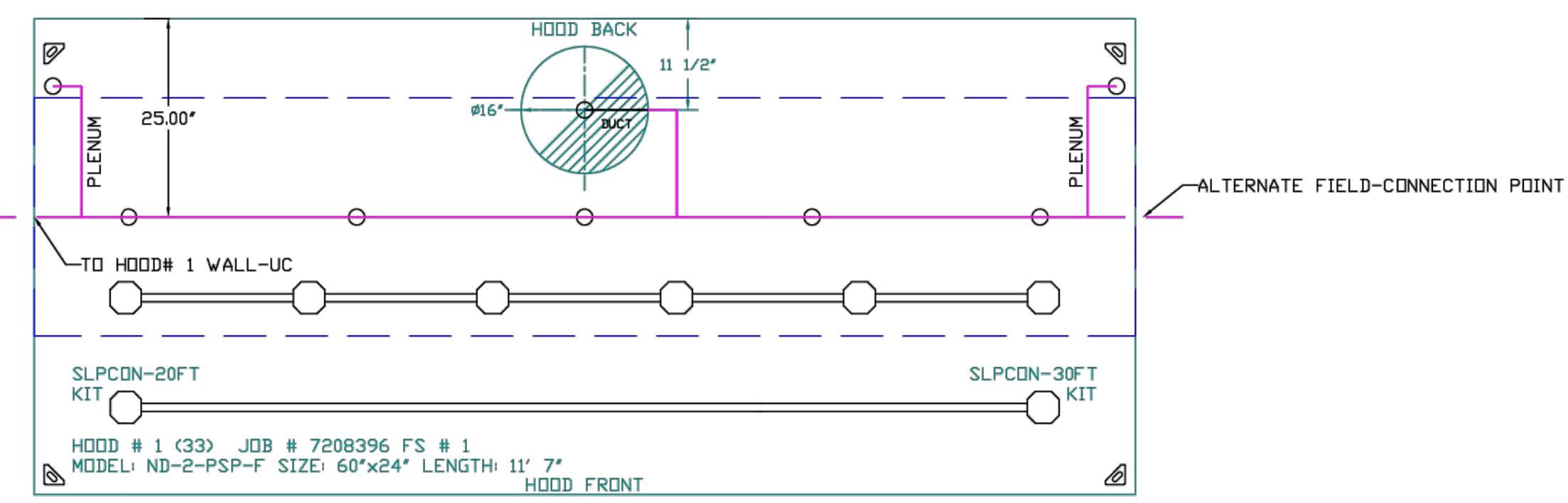
- FIELD PIPE DROPS AS SHOWN
- PIPING, ELBOWS, TEES, AND NOZZLES SUPPLIED BY CAS.
- FIELD INSTALLED DROP: FACTORY WILL PROVIDE QTY 2 60IN LONG PIECES OF CHROME PLATED PIPING SHIPPED LOOSE TO BE FIELD-INSTALLED.
- SHIP LOOSE DROP: FACTORY WILL PROVIDE THE EXACT CHROME PIPE LENGTH NEEDED SHIPPED LOOSE TO BE FIELD-INSTALLED.
- RELOCATE NOZZLES IF FLOW PATTERN IS BLOCKED BY SHELVEING, SALAMANDERS, ETC.
- OVERLAPPING COVERAGE SHALL NOT BE USED ON ANY APPLIANCE WITH AN OBSTRUCTION.
- IF APPLICABLE, EXTENDED PRE-PIPED DROPS ARE SHIPPED LOOSE.
- FACTORY PIPING EXTENDS A MAXIMUM OF 6" ABOVE THE TOP OF THE HOOD.
- APPLIANCE DIMENSIONS LISTED REPRESENT THE COOKING SURFACE SIZE, NOT THE OVERALL APPLIANCE SIZE.
- THIS FIRE SYSTEM COMPLIES WITH U.L. 300 REQUIREMENTS.
- DL-F NOZZLE PART NUMBER REPLACES 3070-3/8H-10-SS
- JOB #: 7208396
- JOB NAME: CAVA - NEW YORK, NY (COLUMBUS)_R1.
- SYSTEM SIZE: TANK-SP-2-WC DESIGN FP: 37, MAXIMUM FP: 40.
- HOOD # 1 11' 7.00' LONG X 60" WIDE X 24" HIGH.
- RISER # 1 SIZE: 16" DIA.
- HOOD # 1 METAL BLOW-OFF CAPS INCLUDED.
- HEAVY-DUTY APPLIANCES (RATED 600°F) WILL REQUIRE AN ADDITIONAL DOWNSTREAM FIRESTAT IN THE EVENT THAT THE DUCTWORK CONTAINS ANY HORIZONTAL RUNS OVER 25 FT IN LENGTH.
- MEDIUM TO LIGHT-DUTY APPLIANCES (RATED 450°F) WILL NOT REQUIRE ANY ADDITIONAL DOWNSTREAM DETECTION.

- SYSTEM REQUIRES A MINIMUM OF 7 FT OF EQUIVALENT PIPE LENGTH BETWEEN TANK AND NEAREST APPLIANCE NOZZLE FOR MOST APPLIANCES. EACH 90 DEGREE ELBOW ADDS 1.3 FT OF EQUIVALENT LENGTH. SEE MANUAL FOR DETAILS.



LEGEND - FIRE CABINET TANK SYSTEM

- 4 GALLON TANK.
- PRIMARY ACTUATOR RELEASE.
- SECONDARY ACTUATOR RELEASE.
- PRESSURE SUPERVISION SWITCH.
- PRIMARY HOSE ASSEMBLY.
- SECONDARY HOSE ASSEMBLY.
- REMOTE MANUAL ACTUATION DEVICE.



INCLUDES: FIELD INSTALLATION AND HOOKUP DURING NORMAL BUSINESS HOURS BY CERTIFIED INSTALLERS ONLY IN THE LOCATION NOTED ABOVE. TWO SITE VISITS ONLY (ONE VISIT TO SET PULL STATION & SYSTEM HOOKUP AND ONE VISIT FOR ONE TEST). ADDITIONAL VISITS WILL RESULT IN ADDITIONAL CHARGES). ONE MECHANICAL OR ELECTRICAL GAS VALVE PER SYSTEM AT A MAXIMUM SIZE OF 2", PERMIT, AND SYSTEM TEST. EXCLUDES: UNION LABOR & PREVAILING WAGE LABOR & WAGES WILL BE ADDED IF APPLICABLE). GAS VALVE INSTALLATION, ELECTRICAL HOOKUP AND CONNECTIONS, HANGING OF FIRE CABINET, SHUNT TRIP, HANDHELD EXTINGUISHER(S), ON-SITE RE-PIPING DUE TO EQUIPMENT LAYOUT CHANGES.

AGENT DISTRIBUTION PIPING LIMITATIONS	
PIPE SECTION	MAX PIPE LENGTH (FT)
MAX SUPPLY LINE TO FIRST OVERLAPPING NOZZLE	42
OVERLAPPING NOZZLE APPLIANCE BRANCH	10
DEDICATED NOZZLE APPLIANCE BRANCH	10

REVISIONS

NO.	DESCRIPTION	DATE

CAPTIVE

Maryland Mechanical
8120 Woodmont Avenue, Suite 720, Bethesda, MD, 20814 PHONE: (800) 988-0881 ORBIT FAX: 9122279531 EMAIL: reg76@captiveaire.com www.captiveaire.com

Cava - New York, NY (Columbus)_R1
977 8th Avenue,
New York, NY, 10019

DATE: 12/17/2024
DWG.#: 7208396
DRAWN BY: ABS-76
SCALE: NTS
MASTER DRAWING

SHEET NO.
3

REV	DATE	DESCRIPTION
R1	08-12-2024	SD SUBMISSION SET
R1	09-10-2024	DOCLAND AND REVIEW SET
R2	11-22-2024	ISSUED FOR BID
R3	12-17-2024	ADDENDUM 1
R3	04-26-2025	ISSUED FOR CONSTRUCTION

LEGAL: THESE PLANS AND SPECIFICATIONS, AS WELL AS ANY NEW VISION ARCHITECTS LLP NAME AND LOGO, TRADEMARKS AND DESIGN ARE THE EXCLUSIVE PROPERTY OF NEW YORK DESIGN ARCHITECTS LLP. ANY REPRODUCTION, MODIFICATION, DISSEMINATION OR USE OF THESE MATERIALS OR ANY PORTION OF THEM WITHOUT PRIOR WRITTEN CONSENT IS STRICTLY PROHIBITED. CONTRACTOR SHALL NOT SCALE OFF THESE DRAWINGS FOR ANY REASON. THE ARCHITECT/ENGINEER OF RECORD TAKE NO RESPONSIBILITY FOR WORK BEING PERFORMED BY SCALING OFF DRAWINGS. ALL DIMENSIONS SHALL BE LAID OUT IN ACCORDANCE TO BUILDING DEPT APPROVED DRAWINGS. ANY DIMENSIONS WITH FIELD DIMENSIONS AND DIMENSIONS SHOWN ON APPROVED DRAWINGS SHALL BE MADE PRIOR TO THE COMMENCEMENT OF WORK. COMMENCEMENT OF ALL WORK INDICATES ACCEPTANCE OF ALL COMPONENTS INDICATED ON APPROVED DRAWINGS. THIS DOCUMENT IS PROTECTED UNDER TITLE 19 US CODE. ANY ALTERATION OF ANY PERSON OTHER THAN THE AUTHOR OF SUCH DOCUMENT IS ILLEGAL AND SUBJECT TO PROSECUTION (2018-10-17)

CLIENT:

CAVA

ADDRESS:
1000 8TH AVENUE
(a.k.a. 4 COLUMBUS CIRCLE)
NEW YORK, NY 10019

PROJECT NO: 23195 DATE: 02/26/2024
PARTNER IN CHARGE: JS PROJECT MANAGER: IS DRAWN BY: HN/DT

SHEET CONTENTS:
MECHANICAL KITCHEN EQUIPMENT SHEET 3 OF 10

SHEET: M-502.00 PAGE NO: 09 of 16

ISSUED FOR CONSTRUCTION SET - 04/25/2025

EXHAUST FAN INFORMATION - JOB#7208396

FAN UNIT NO	TAG	QTY	FAN UNIT MODEL #	MANUFACTURER	CFM	ESP	RPM	MOTOR ENCL	HP	BHP	PHASE	VOLT	FLA	DISCHARGE VELOCITY	WEIGHT (LBS)	SDNES
1	KEF-1	1	USB18DD-RM	CAPTIVEAIRE	2606	2.000	1347	DDP, PREMIUM	3.000	1.3910	3	208	9.5	1336 FPM	423	21.4

MUA FAN INFORMATION - JOB#7208396

FAN UNIT NO	TAG	QTY	FAN UNIT MODEL #	BLOWER	HOUSING	MIN CFM	DESIGN CFM	ESP	RPM	MOTOR ENCL	HP	BHP	PHASE	VOLT	FLA	MCA	MDCP	WEIGHT (LBS)	SDNES
2	MAU-1	1	EA2-D250-20D	20MF-2-MDD	A2-D250	2000	2163	0.500	1008	DDP, PREMIUM	1.000	0.5640	3	208	3.8	4.8A	15A	776	6.9

GAS FIRED MAKE-UP AIR UNIT(S)

FAN UNIT NO	TAG	INPUT BTUs	OUTPUT BTUs	TEMP RISE	REQUIRED INPUT GAS PRESSURE	GAS TYPE	BURNER EFFICIENCY(%)
2	MAU-1	143057	131612	57°F	7 IN. W.C. - 14 IN. W.C.	NATURAL	92

FAN #1 USB18DD-RM - EXHAUST FAN (KEF-1)

FAN OPTIONS

FAN UNIT NO	TAG	QTY	DESCRIPTION
1	KEF-1	1	B118 - INLET SERVICE DUCT CONNECTION. USED TO CONNECT TO STANDARD 20" GREASE DUCT OR FIELD WELDED DUCT. INCLUDES (2) 7" RISERS BOLTED TO STANDARD INLET RISER
		1	UTILITY SET GREASE CUP
		1	B118 - 24" DISCHARGE EXTENSION
		1	B1 - DISCHARGE ORIENTATION VERTICAL UPPER LEFT - CW INLET SIDE
		1	B118 - INLET CONNECTION STANDARD 20" FLANGED GREASE DUCT
		1	UTILITY SET - SPRING VIBRATION ISOLATORS - B118 / EQUIVALENT SIZED UTILITY SET - INDOOR/OUTDOOR USE
2	MAU-1	1	2 YEAR PARTS WARRANTY
		1	SIZE 2 DIRECT FIRED HEATER LOW CFM PROFILE PACKAGE - USED ON HEATERS UNDER 2500 CFM
		1	INLET PRESSURE GAUGE, 0-35"
		1	MANIFOLD PRESSURE GAUGE, -S TO 15" WC
		1	BUTTERFLY MOD VALVE OPTION FOR MOD SIZE 2 (1" MOD VALVE)
		1	SHIP LOOSE GAS STRAINER 1"
		1	MOTORIZED BACKDRAFT DAMPER FOR A2-D HOUSING - MEETS AMCA CLASS 1A RATING
		1	DF2 INDOOR HANGING OPTION - INCLUDES 2 HSA125 HANGING SPRING ISOLATORS PER UNI-STRUT
		1	FREEZE/STAT
		1	INSULATION OPTION FOR VBANK FILTER SECTION
		1	SEPARATE 120V WIRING PACKAGE (REQUIRED AND USED ONLY FOR DCV OR PREWIRE WITH VFD) - THREE PHASE ONLY
		1	2 YEAR PARTS WARRANTY
1	EXTERIOR GAS CONNECTION PROVIDED BY FACTORY WITH QUICK SEAL AND ANTI-ROTATION BRACKET		

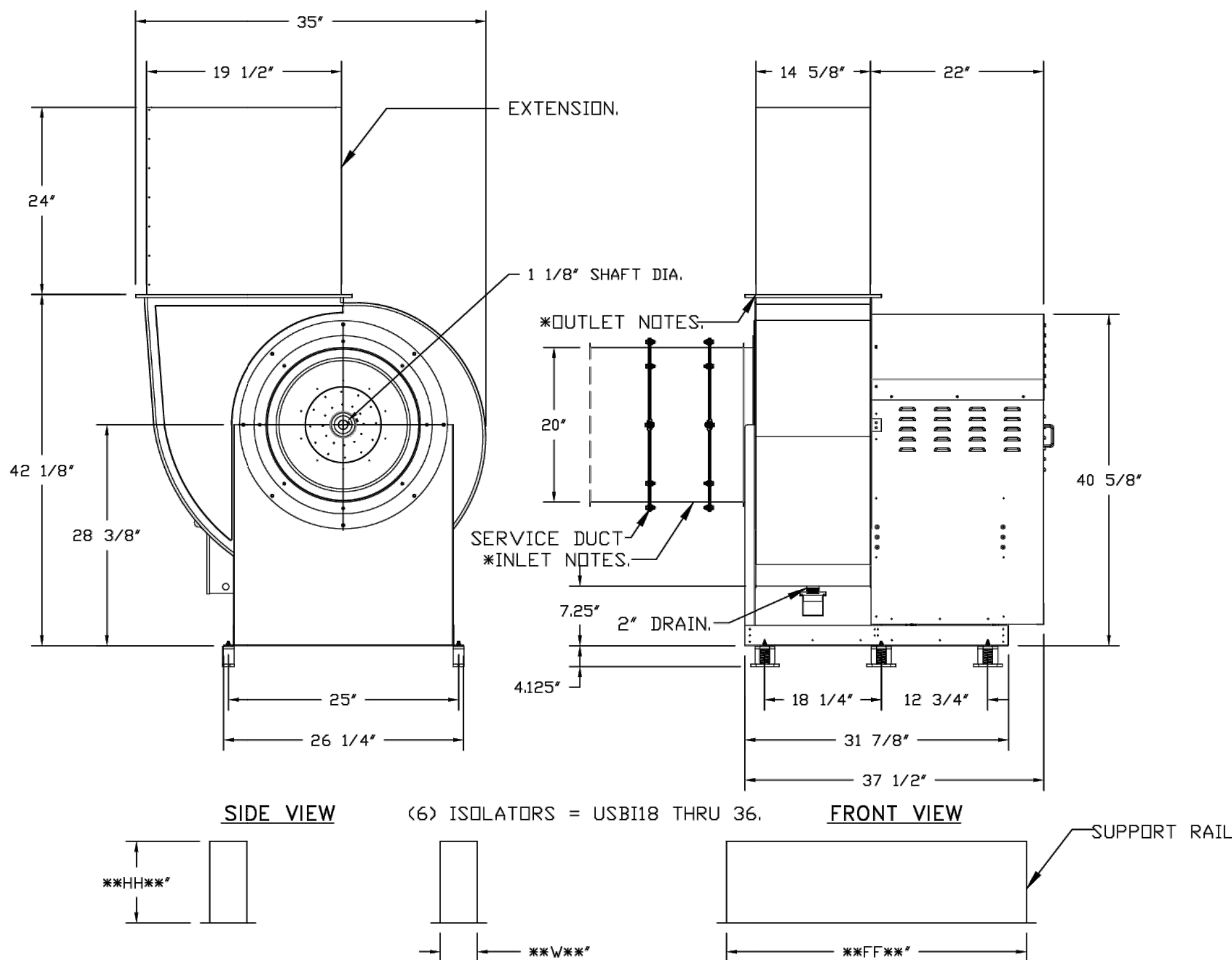
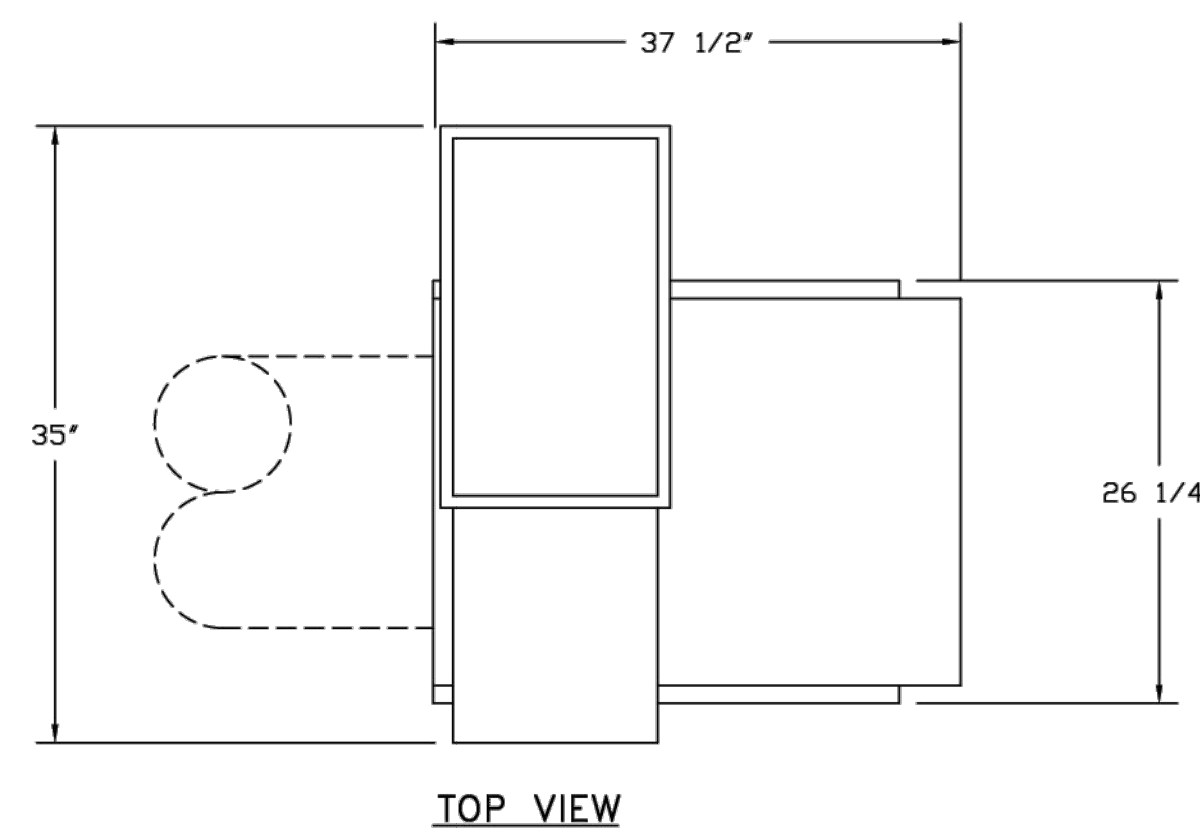
FAN ACCESSORIES

FAN UNIT NO	TAG	EXHAUST			SUPPLY			
		GREASE CUP	GRAVITY DAMPER	WALL MOUNT	SIDE DISCHARGE	GRAVITY DAMPER	MOTORIZED DAMPER	WALL MOUNT
1	KEF-1	YES			YES		YES	
2	MAU-1							

CURB ASSEMBLIES

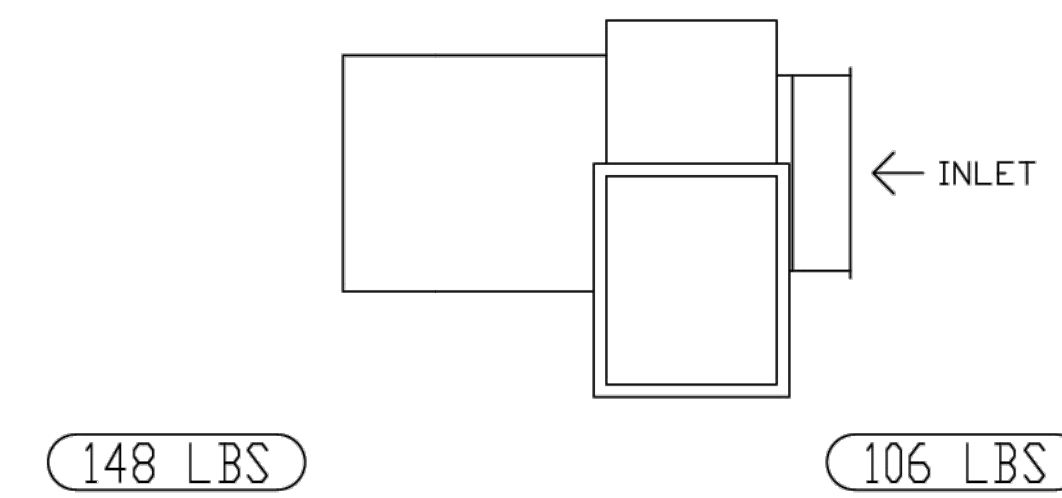
NO	DN FAN	TAG	WEIGHT	ITEM	SIZE
1	# 1	KEF-1	50 LBS	RAIL	4,000"W X 48,000"L X 20,000"H COMES AS A SET OF 2.

HMI SCHEDULE				
UNIT NUMBER	HMI #	HMI LOCATION	TEMP AVERAGING	MODBUS ADDRESS
FAN #2	HMI #1 - UNIT	IN UNIT	NOT AVERAGED	55



* INLET/OUTLET NOTES:
LENGTH OF THE STRAIGHT DUCT ON THE INLET AND OUTLET TO BE 3 TIMES THE EQUIVALENT DUCT DIAMETER BEFORE CONNECTING TO ANY FITTINGS SUCH AS ELBOWS TO AVOID SYSTEM EFFECT.

UNIT PLAN VIEW CORNER WEIGHTS:
CORNER WEIGHTS ARE CALCULATED BASED ON VERTICAL DISCHARGE. SUPPORT DUCT PROPERLY BEFORE FAN TO ENSURE CORNER WEIGHTS ARE NOT AFFECTED.



NORMAL TEMPERATURE TEST DIRECT DRIVE EXHAUST FAN MUST OPERATE CONTINUOUSLY WHILE EXHAUSTING AIR AT 350°F (176°C) UNTIL ALL FAN PARTS HAVE REACHED THERMAL EQUILIBRIUM, AND WITHOUT ANY DETERIORATING EFFECTS TO THE FAN WHICH WOULD CAUSE UNSAFE OPERATION.

FEATURES:

- ROOF MOUNTED FANS.
- UL705.
- UL762 AND ULC-S645 (RESTAURANT MODEL).
- HIGH HEAT OPERATION DIRECT DRIVE 350°F (176°C).
- HEAT SLINGER.
- NEMA 3R SAFETY DISCONNECT SWITCH.
- GREASE CLASSIFICATION TESTING.
- 2" DRAIN.
- MOTOR WEATHER COVER.
- FULLY SEALED SCROLL HOUSING.
- SCROLL ACCESS DOOR.
- FLANGE 1 1/4".

OPTIONS

- B118 - INLET SERVICE DUCT CONNECTION. USED TO CONNECT TO STANDARD 20" GREASE DUCT OR FIELD WELDED DUCT. INCLUDES (2) 7" RISERS BOLTED TO STANDARD INLET RISER.
- UTILITY SET GREASE CUP.
- B118 - 24" DISCHARGE EXTENSION.
- B1 - DISCHARGE ORIENTATION VERTICAL UPPER LEFT - CW INLET SIDE.
- B118 - INLET CONNECTION STANDARD 20" FLANGED GREASE DUCT.
- UTILITY SET - SPRING VIBRATION ISOLATORS - B118 / EQUIVALENT SIZED UTILITY SET - INDOOR/OUTDOOR USE.
- 2 YEAR PARTS WARRANTY.

REVISIONS

DISCREPTION	DATE

CAPTIVE
Maryland Mechanical
8120 Woodmont Avenue, Suite 720, Bethesda, MD 20814 PHONE: (800) 988-0881 FAX: 9122279531 EMAIL: reg76@captiveaire.com

Cava - New York, NY (Columbus)_RI
977 8th Avenue,
New York, NY, 10019

DATE: 12/17/2024

DWG.#: 7208396

DRAWN BY: ABS-76

SCALE: NTS

MASTER DRAWING

SHEET NO. 4

ISSUE DATE	REVISION	DATE
08-12-2024	SD SUBMISSION SET	08-12-2024
09-10-2024	DOCLAND AND REVIEW SET	09-10-2024
11-22-2024	ISSUED FOR BID	11-22-2024
12-17-2024	ADDENDUM	12-17-2024
04-26-2025	ISSUED FOR CONSTRUCTION	04-26-2025

LEGAL: THESE PLANS AND SPECIFICATIONS, AS WELL AS NEW YORK DESIGN ARCHITECTS LLP NAME AND LOGO, TRADEMARKS AND DESIGN ARE THE EXCLUSIVE PROPERTY OF NEW YORK DESIGN ARCHITECTS LLP. ANY REPRODUCTION, MODIFICATION, DISSEMINATION AND/OR USE OF THESE MATERIALS OR ANY PORTION OF THEM WITHOUT PRIOR WRITTEN CONSENT IS STRICTLY PROHIBITED. CONTRACTOR AND/OR SUBCONTRACTOR SHALL NOT SCALE OFF THESE DRAWINGS FOR ANY REASONS. THE ARCHITECT/ENGINEER OF RECORD TAKE NO RESPONSIBILITY FOR WORK BEING PERFORMED BY SCALING OFF DRAWINGS. ALL DIMENSIONS SHALL BE LAID OUT IN ACCORDANCE TO BUILDING DEPT. APPROVED DRAWINGS. ANY DISCREPANCIES WITH FIELD DIMENSIONS AND DIMENSIONS INDICATED ON APPROVED DRAWINGS SHALL BE MADE KNOWN TO THE ARCHITECT/ENGINEER OF RECORD PRIOR TO COMMENCEMENT OF WORK. INDICATES ACCEPTANCE OF ALL COMPONENTS INDICATED APPROVED DRAWINGS. THIS DOCUMENT IS PROTECTED UNDER TITLE 19 US CODE. ANY ALTERATION BY ANY PERSON OTHER THAN THE AUTHOR OF SUCH DOCUMENT IS ILLEGAL AND SUBJECT TO PROSECUTION. (2018-10-17)

CAVA

new york design ARCHITECTS LLP
GIUSEPPE R. ANZALONE, AIA
JOSEPH J. SBERINA, AIA
175 WEST BROADWAY, NEW YORK, NY 10013
TEL: (212) 680 0140, FAX: (212) 658 9548
www.newyorkdesign.com

ADDRESS:
1000 8TH AVENUE
(a.k.a. 4 COLUMBUS CIRCLE)
NEW YORK, NY 10019

PROJECT NO: 23195 DATE: 02/26/2024
PARTNER IN CHARGE: JS PROJECT MANAGER: IS DRAWN BY: HN/DT

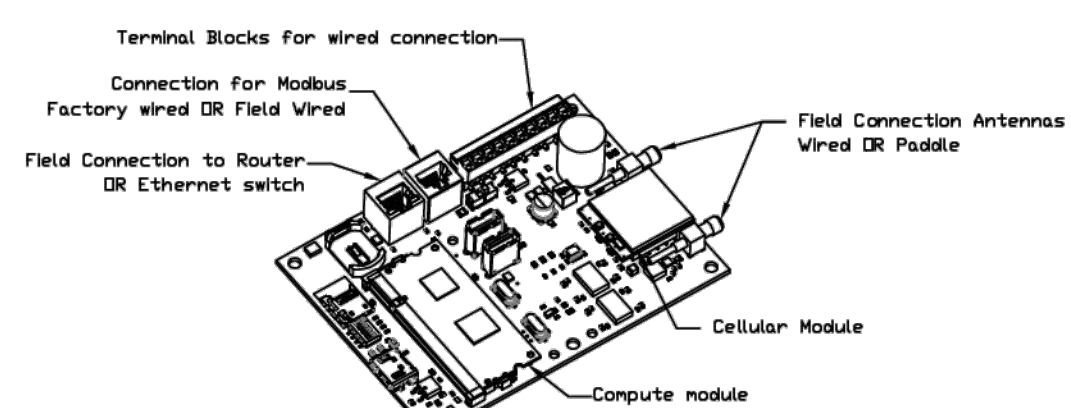
SHEET CONTENTS:
MECHANICAL KITCHEN EQUIPMENT
SHEET 4 OF 10

SHEET: M-503.00 PAGE NO: 10 of 16

ISSUED FOR CONSTRUCTION SET - 04/25/2025

ELECTRICAL PACKAGE - JOB#7208396

NO	TAG	PACKAGE #	LOCATION	SWITCHES		OPTION	FANS CONTROLLED										
				LOCATION	QUANTITY		FAN TAG	TYPE	#	HP	VOLTS	FLA					
1		DCV-1111	WALL UTILITY CABINET LEFT SIDE OF HOOD	FACE MOUNT LEFT SIDE OF HOOD HOOD # 1	1 LIGHT 1 FAN	SMART CONTROLS DCV	KEF-1	EXHAUST	3	3000	208	9.5	MAU-1	1	1000	208	3.8

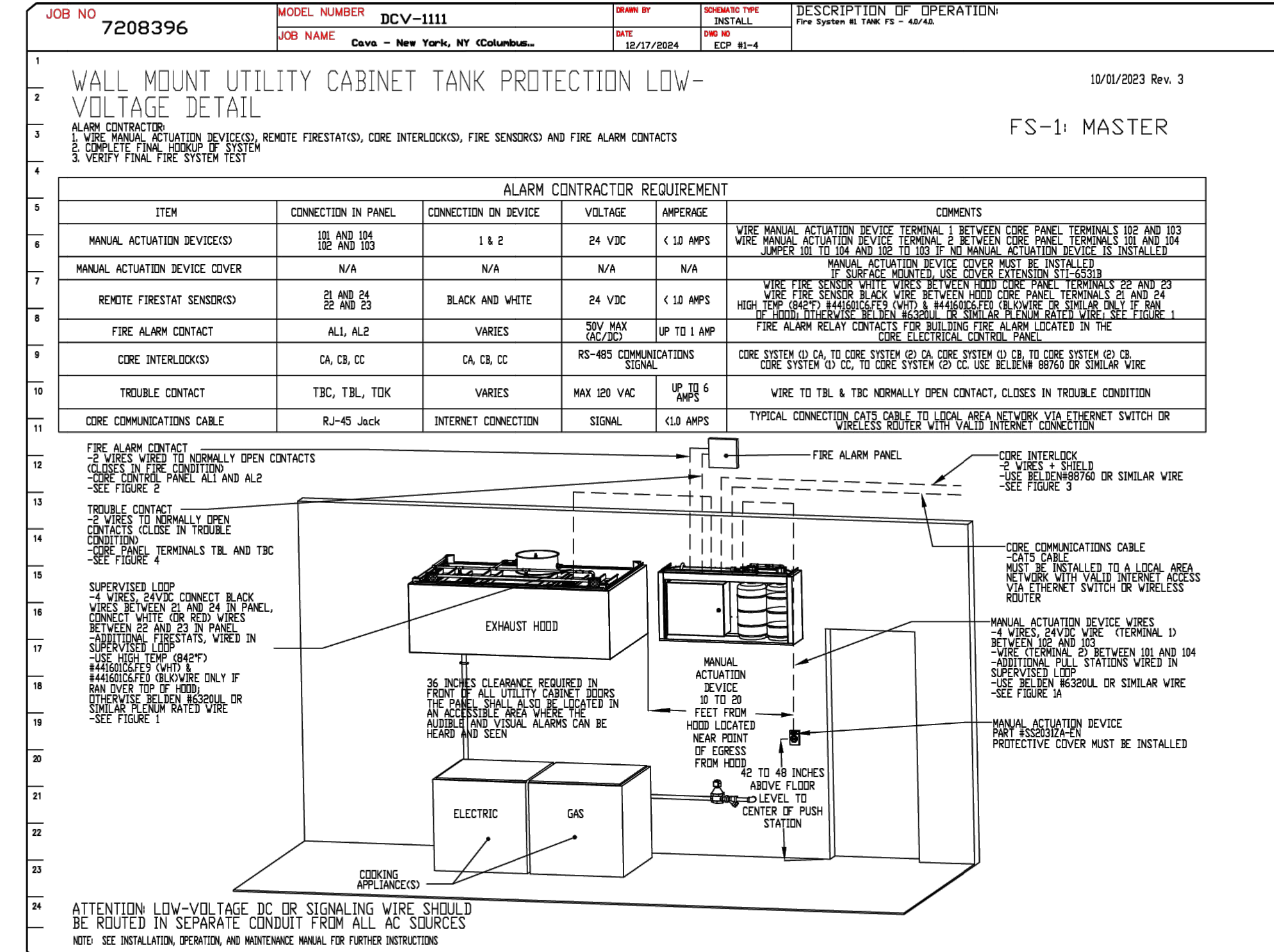
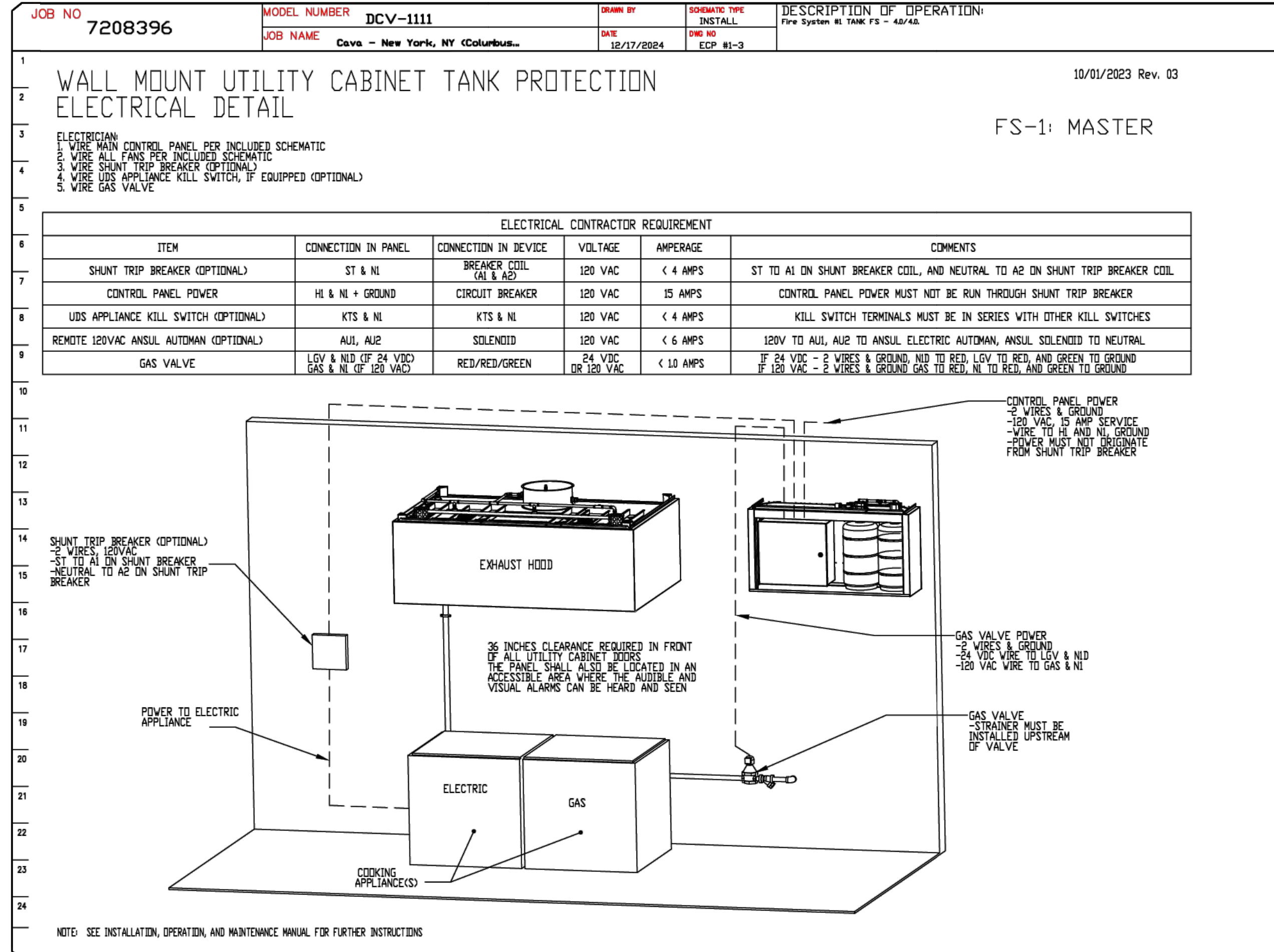
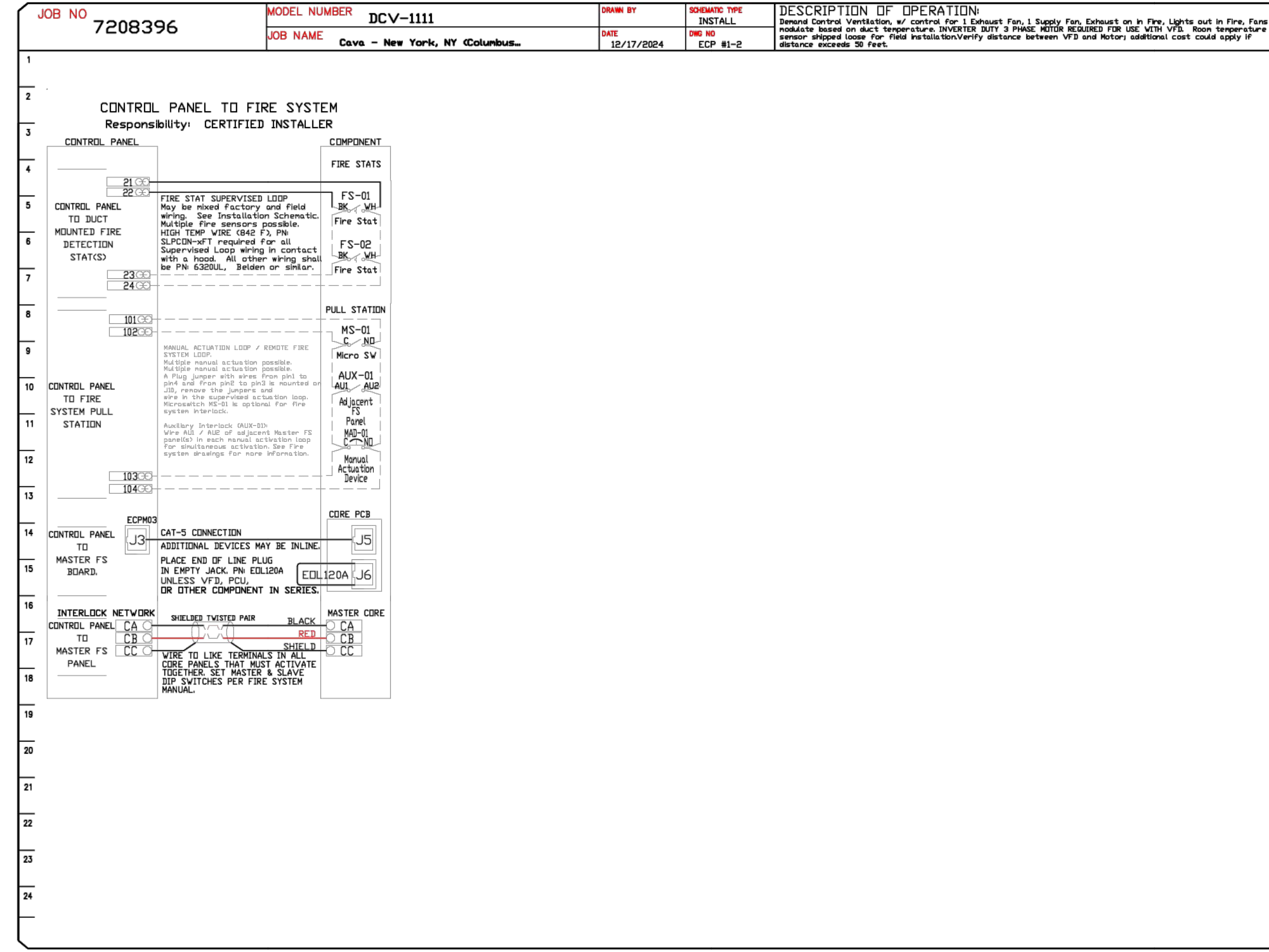
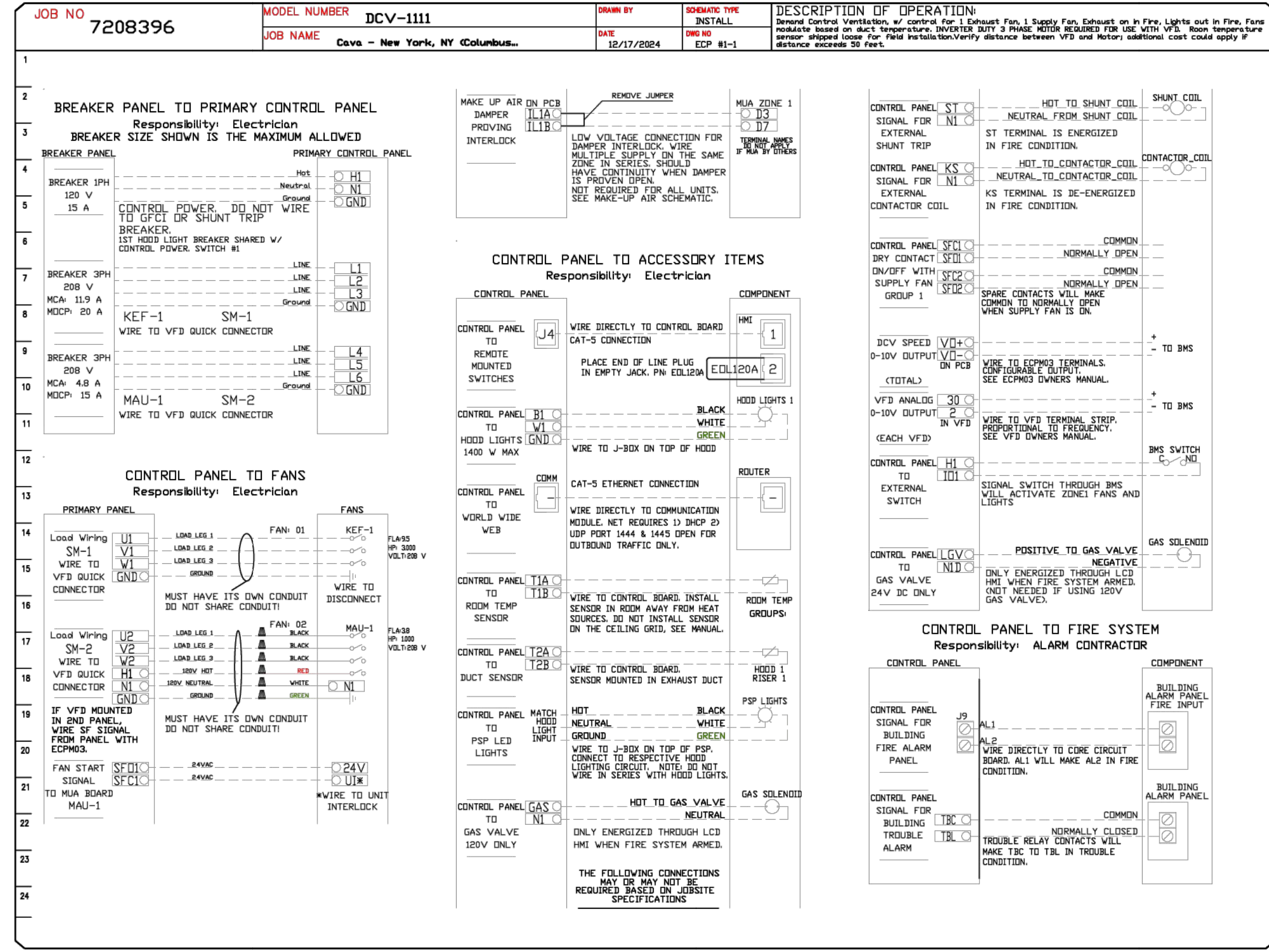


Gaslink Monitor and Control

- Hood control panel to support communications to cloud-based Building Management System.
- Hood Control Panel to allow cloud-based Building Management System to monitor real time parameters outlined as MONITOR on the points list.
- Hood Control Panel to allow cloud-based Building Management System to control parameters outlined as CONTROL on the points list.
- Hood Control Panel to allow cloud-based Building Management System to implement SYSTEM DOWN/RECOVER control strategies for fully integrated Building Management.

MONITORING AND CONTROL POINTS LIST

DCV Packages	Function	DC Packages	Function
Room Temperature	MONITOR	Room Temperature(s)	MONITOR
Duct Temperature(s)	MONITOR	Duct Temperature(s)	MONITOR
Room Discharge Temperature	MONITOR	Room Discharge Temperature	MONITOR
Kitchen RTU Discharge Temperature	MONITOR	Kitchen RTU Discharge Temperature	MONITOR
Fan Ampage	MONITOR	Controler Faults	MONITOR
Fan Status	MONITOR	Fan Status	MONITOR
FCV Status	MONITOR	FCV Status	MONITOR
Exhauster Faults	MONITOR	FCV Filter Chip Penetration	MONITOR
Fan Results	MONITOR	Fan Condition	MONITOR
Fan Status	MONITOR	CORE Fire System	MONITOR
FCV Status	MONITOR	Building Pressure	MONITOR & CONTROL
FCV Filter Chip Penetration	MONITOR	Fan Results(s)	MONITOR & CONTROL
FCV Status	MONITOR	Exhauster Status(s)	MONITOR & CONTROL
CORE Fire System	MONITOR	Exhauster Status	MONITOR & CONTROL
Building Pressure	MONITOR & CONTROL	Exhauster Status	MONITOR & CONTROL
Prep Time Status	MONITOR & CONTROL	Exhauster Status	MONITOR & CONTROL
Fan Status	MONITOR & CONTROL	Exhauster Status	MONITOR & CONTROL
Exhauster Status	MONITOR & CONTROL	Exhauster Status	MONITOR & CONTROL



REVISIONS

NO.	DESCRIPTION	DATE

CAPTIVE

Maryland Mechanical

8120 Woodmont Avenue, Suite 720, Bethesda, MD, 20814 PHONE: (800) 988-0881 FAX: 912279591 EMAIL: reg76@captivemechanical.com

Cava - New York, NY (Columbus)_RI
977 8th Avenue,
New York, NY, 10019

DATE: 12/17/2024
DWG.#: 7208396
DRAWN BY: ABS-76
SCALE: NTS
MASTER DRAWING

SHEET NO. 8

ISSUED FOR CONSTRUCTION SET - 04/25/2025

PROJECT NO: 23195 DATE: 02/26/2024
SHEET NO: M-507.00 14 of 16

MECHANICAL KITCHEN EQUIPMENT SHEET 8 OF 10

new york design ARCHITECTS LLP

CAVA

GIUSEPPE R. ANZALONE, AIA
JOSEPH J. SERRANO, AIA
175 WEST BROADWAY, NEW YORK, NY 10013
TEL: (212) 680 0140, FAX: (212) 688 9548
www.newyorkdesign.com

1000 8TH AVENUE (a.k.a. 4 COLUMBUS CIRCLE) NEW YORK, NY 10019

DATE: 02/26/2024
DRAWN BY: JS IS HN/DT

INDOOR VRF FAN COIL UNIT SCHEDULE (FURNISHED BY LANDLORD)																									
TAG	SERVICE	NOMINAL COOLING CAPACITY (BTUH)	NOMINAL HEATING CAPACITY (BTUH)	SUPPLY AIRFLOW (CFM)	MAX ESP (IN H2O)	COOLING DATA				HEATING DATA				ELECTRICAL DATA				WEIGHT (LBS)	DIMENSIONS (L X W X H)	MANUFACTURER / MODEL	NOTES				
						EAT		LAT		EAT		LAT		VOLTAGE		PHASE						MCA (AMPS)		MDP (AMPS)	
						DB (F)	WB (F)	DB (F)	WB (F)	DB (F)	WB (F)	DB (F)	WB (F)	V	F	V	F					V	F	V	F
ACU-1	DINING / RETAIL	72,000	81,000	2,610	1.0	80.0	67.0	-	70.0	-	208	1	6.45	15	245	36-11 1/2" x 43-5 1/8" x 18-1 1/2"	DAKIN / FMQ227AVJU	-							
ACU-2	SERVICE / PREP	72,000	81,000	2,610	1.0	80.0	67.0	-	70.0	-	208	1	6.45	15	245	36-11 1/2" x 43-5 1/8" x 18-1 1/2"	DAKIN / FMQ227AVJU	-							
ACU-3	PREP AREA / OFFICE	36,000	40,000	1,300	0.6	80.0	67.0	-	70.0	-	208	1	3.1	15	101	35-1 1/2" x 31-1 1/2" x 9-1 1/2"	DAKIN / FMQ267BVJU	-							

NOTES:
 1. NOMINAL COOLING CAPACITIES ARE BASED ON INDOOR COIL EAT OF 80°F (DB) / 67°F (WB), OUTDOOR OF 97°F (DB).
 2. NOMINAL HEATING CAPACITIES ARE BASED ON INDOOR COIL EAT OF 70°F (DB), OUTDOOR OF 47°F (WB).
 3. ALL REFRIGERANT PIPING SIZES AND ROUTING SHALL BE PROVIDED AS PER MANUFACTURER'S RECOMMENDATIONS.
 4. SCHEDULED AIR FLOW INFORMATION IS HIGH SPEED.
 5. PROVIDE EACH UNIT WITH INTERNAL DRAIN PAN, LIQUID DETECTOR AND INTEGRAL CONDENSATE LIFTS.
 6. PROVIDE EACH UNIT WITH TOGGLE DISCONNECT SWITCH.
 7. FURNISH ALL CEILING HUNG UNITS WITH A 30N VIBRATION ISOLATOR WITH 1" STATIC DEFLECTION.
 8. PROVIDE FIELD-ASSEMBLED FILTER PACK WITH MIN. 2" THICK MERV-13 FILTER.

FAN SCHEDULE													
TAG	LOCATION	AREA SERVED	CFM	ESP (IN. W.C.)	FAN RPM	HP	DRIVE TYPE	ELECTRICAL DATA			WEIGHT	MANUFACTURER / MODEL	NOTES
								VOLTAGE	PHASE	FLA (AMPS)			
DAF-1	SEE PLANS	VENTILATION	600	0.4	1,128	14	DIRECT	115	1	2.9	52	GREENHECK / SQ-100-VG	CONTROL VIA TIMECLOCK

ELECTRIC DUCT HEATER SCHEDULE												
TAG	LOCATION	HEATER DIMENSION (L X W)	CFM	AIR TEMP RISE (F)	STAGE	KW CAPACITY	ELECTRICAL DATA		MANUFACTURER / MODEL	NOTES		
							VOLTAGE	PHASE				
EDH-1	SEE PLANS	12"x6"	600	50	SCR	10	208	1	INDECO / QUA	OPEN COIL, SLIP-IN		

WATER-COOLED VRF CONDENSING UNIT SCHEDULE (FURNISHED BY LANDLORD)																											
TAG	LOCATION	SERVICE	OPERATING WATER TEMP RANGE (F) DB	COMPRESSOR			COOLING DATA				HEATING DATA				ELECTRICAL DATA				WEIGHT (LBS)	DIMENSIONS (L X W X H)	APPROX WEIGHTS (LBS)	MANUFACTURER / MODEL	NOTES				
				QTY	KW INPUT	TYPE	TOTAL CAP (BTUH)	GPM	ENT (F)	LWT (F)	P/D (PSI)	TOTAL CAP (BTUH)	GPM	ENT (F)	LWT (F)	P/D (PSI)	VOLTAZ	MCA						MOCP	BEERIER	COF	REFRIG TYPE
				1	8.81	INVERTER SCROLL	144,000	31.7	68.0	81.4	-	162,000	31.7	86.0	75.0	-	208/360	44.6						50.0	12.6/21.9	5.3	R410A
ODU-1	SEE PLANS	ACU-1 THRU ACU-3	50.0 - 95.0	1	8.81	INVERTER SCROLL	144,000	31.7	68.0	81.4	-	162,000	31.7	86.0	75.0	-	208/360	44.6 <td>50.0</td> <td>12.6/21.9</td> <td>5.3</td> <td>R410A</td> <td>30-1 1/2" x 22-1 1/2" x 38-9 1/4"</td> <td>423</td> <td>DAKIN / RVEQ144TATAJHR</td> <td>-</td>	50.0	12.6/21.9	5.3	R410A	30-1 1/2" x 22-1 1/2" x 38-9 1/4"	423	DAKIN / RVEQ144TATAJHR	-	

BRANCH CIRCUIT CONTROLLER BOX (FURNISHED BY LANDLORD)									
TAG	UNIT SERVICE	CONNECTED CAPACITY (BTUH)	LOCATION	BRANCH CONNECTIONS/PORTS	VPHASE/2	MCA	MOCP	MANUFACTURER/MODEL	REMARKS
BC-1	ACU-1 THRU ACU-3	216,000	STORAGE ROOM	6	208/180	5.6	15	DAKIN / SFPS262TU	-

ELECTRIC HEATED AIR CURTAIN SCHEDULE														
TAG	LOCATION	AIR PERFORMANCE DATA				ELECTRICAL DATA					NOTES			
		NOZZLE WIDTH(IN)	MAX OUTLET VEL(FPM)	CFM	OUTLET VELOCITY UNIFORMITY	AIR TEMP RISE (F)	AVG. OUTLET VEL (FPM)	MAX ELECTRIC CAPACITY (KW)	VPHZ	MOTOR(S) QTY @ HP		HEATER OUTPUT (MBH)		
AIR-1	SEE PLANS	66.0	4,828	1,947	83%	27	1,027	14.0	208/360	1 @ 1/2	47.8	138	BERNER / ARD10-100E	-

AIR OUTLETS SCHEDULE							
TAG	DESCRIPTION	NECK SIZE	FRAME SIZE	CFM RANGE	MAX NC	MANUFACTURER / MODEL	NOTES
CD-1	CEILING SUPPLY DIFFUSER	5"Ø	12"x12"	0-150	<20	TITUS / TMS	3-CONE DIFFUSER
CD-2	CEILING SUPPLY DIFFUSER	6"Ø	24"x24"	0-250	<20	TITUS / TMS	3-CONE DIFFUSER
CD-3	CEILING SUPPLY DIFFUSER	8"Ø	24"x24"	251-450	26	TITUS / TMS	3-CONE DIFFUSER
EG-1	CEILING EXHAUST GRILLE	-	12"x12"	0-150	<20	TITUS / 360RL	3/4" BLADE SPACING, 35 DEG. DEFLECTION
RG-1	CEILING RETURN REGISTER	-	24"x24"	0-800	<20	TITUS / 360RL	3/4" BLADE SPACING, 35 DEG. DEFLECTION
SG-1	SIDEWALL SUPPLY REGISTER	18"x6"	20"x6"	0-450	24	TITUS / 300FL	3/4" BLADE SPACING, DOUBLE DEFLECTION
SG-2	SIDEWALL SUPPLY REGISTER	10"x6"	12"x6"	0-200	23	TITUS / 300FL	3/4" BLADE SPACING, DOUBLE DEFLECTION
TG-1	SIDEWALL TRANSFER GRILLE	10"x6"	12"x6"	0-250	25	TITUS / 301RL	3/4" BLADE SPACING, 0 DEG. DEFLECTION

NOTES:
 1. DIFFUSERS SHALL BE SUITABLE FOR THE TYPE OF CEILING CONSTRUCTION BEING INSTALLED IN.
 2. DIFFUSERS THAT SERVE AREAS WITHOUT HUNG CEILINGS SHALL BE SUITABLE FOR DUCTWORK MOUNTING.
 3. PROVIDE CABLE OPERATED DAMPERS FOR DIFFUSERS IN INACCESSIBLE CEILINGS.

SEQUENCE OF OPERATIONS
KITCHEN HOOD SYSTEM
A) THE KITCHEN EXHAUST HOOD SYSTEM SHALL BE FURNISHED WITH A KITCHEN HOOD CONTROL PANEL. ATC CONTROLS CONTRACTOR SHALL INTERLOCK HOOD CONTROLS WITH KITCHEN EXHAUST FAN AND MAKE-UP AIR UNIT.
B) THE HOOD CONTROL PANEL SHALL ACTIVATE THE EXHAUST FAN SIZE 1 AND THE MAKEUP AIR UNIT SHALL AUTOMATICALLY VIA HEAT SENSOR OR VIA A TOGGLE SWITCH ON THE CONTROL PANEL. THE KITCHEN EXHAUST FAN SHALL START WHENEVER THE KITCHEN EXHAUST SYSTEM PANEL STATUS IS ON.
C) A CURRENT SWITCH SHALL MONITOR THE FAN STATUS, AND IF THE FAN STATUS DOES NOT MATCH THE COMMAND OTHER THAN IMMEDIATELY FOLLOWING A START COMMAND, THEN A FAN FAIL ALARM SHALL BE ANNUNCIATE AT THE HOOD CONTROL PANEL.
D) A DISCHARGE AIR SENSOR SHALL CYCLE THE GAS HEAT VALVE ON MAKEUP TO MAINTAIN A DISCHARGE TEMPERATURE OF 58 DEGREES F (ADJUSTABLE). THE SET POINT SHALL BE RESET BASED ON SPACE TEMPERATURE.
E) ALL ASSOCIATED DAMPERS SHALL BE HARDWIRED INTERLOCKED TO OPEN AND CLOSE WITH FAN OPERATION.
F) THE HOOD CONTROL SYSTEM SHALL BE CONNECTED TO THE AHU/LU SYSTEM FOR EMERGENCY SHUTDOWN.
G) IN EVENT OF A FIRE CONDITION, THE EXHAUST SHALL OPERATE CONTINUOUSLY UNTIL MANUALLY SHUT DOWN AND SHALL SHUT DOWN UPON DETECTING SMOKE VIA DUCT-MOUNTED SMOKE DETECTOR, ASSOCIATED OUTSIDE AIR DAMPER SHALL CLOSE.
AIR CONDITIONING UNITS: ACU-1 THRU ACU-3
A) THE AC UNIT SHALL BE FURNISHED WITH FACTORY DIGITAL CONTROLS FOR A COMPLETE STAND-ALONE OPERATION. AC UNITS SHALL EACH MAINTAIN SPACE SETPOINT TEMPERATURE OF 72 DEGREES F (ADJUSTABLE) AS DICTATED BY THE MANUFACTURER PROVIDED 7 DAY PROGRAMMABLE THERMOSTAT.
OUTSIDE AIR FAN: OAF-1 ELECTRIC DUCT HEATER
A) OUTSIDE AIR FAN (OAF-1) FAN SHALL RUN CONTINUOUSLY DURING BUSINESS HOURS (ADJUSTABLE). INTERLOCK FAN AND HEATER OPERATION ONCE THE OUTSIDE AIR FAN IS ON. EDH-1 SHALL OPERATE TO MAINTAIN 70 DEGREE F SPACE TEMPERATURE (ADJ.)

DUCTWORK INSULATION									
DUCTWORK LOCATION	FLAME SPREAD RATING	SMOKE DEVELOPED INDEX RATING	INSULATION MEAN TEMPERATURE RATING	MINIMUM INSTALLED INSULATION VALUE					
CONDITIONED SPACE	25	50	75°F	R-6					
UNCONDITIONED SPACE	25	50	75°F	R-8					

DUCTWORK INSULATION NOTES:
 1. REFER TO MECHANICAL SPECIFICATION DRAWINGS FOR ADDITIONAL INFORMATION.
 2. ALL MINIMUM REQUIRED DUCTWORK INSULATION VALUES SHALL COMPLY WITH THE 2020 NYC ENERGY CONSERVATION CODE ESTABLISHED VALUES.

PIPE MATERIAL SCHEDULE						
SERVICE	SIZE	MATERIAL	HEIGHT	STANDARD	JOINT TYPE	
COLD CONDENSATE DRAINS	2" & BELOW	HARD COPPER	TYPE 'L'	ASTM A88	BRAZE OR SILVER SOLDER	
REFRIGERANT	ALL	HARD COPPER	TYPE ACR REFRIGERANT OR TYPE 'L'	ASTM B200 OR ASTM B-88	BRAZE OR SOLDER	
CONDENSER WATER	2" & BELOW 6" TO 10"	HARD COPPER BLACK STEEL	TYPE 'K'	ASTM B88 OR A106 SEAMLESS GRADE B	BRAZE OR SILVER SOLDER WELDED	

CONDENSATE PUMP SCHEDULE										
DESIGNATION	SERVICE	TANK CAPACITY	GPH	TDH (FT)	RPM	BHP	MOTOR HP	ELECTRICAL VOLTAZ	WEIGHT (LBS)	MANUFACTURER / MODEL
CP	SEE PLANS	1 QUART	38	12	3000	-	1/10	120/180	5	HARTELL KL-1DG-115

PUMP SCHEDULE NOTES (TYPICAL FOR EACH PUMP):
 1. PROVIDE AUXILIARY SAFETY SWITCH.
 2. PROVIDE 1" INLET SIZE AND BUILT IN CHECK VALVE.

MINIMUM PIPING INSULATION THICKNESS									
FLUID TEMPERATURE RANGE	CONDUCTIVITY RANGE (K-VALUE)	INSULATION MEAN TEMPERATURE RATING	NOMINAL PIPE DIAMETER (IN INCHES)						
			< 1	1 TO < 1.5	1.5 TO < 4	4 TO < 8	8+		
			INSULATION THICKNESS REQUIRED (IN INCHES)						
ABOVE 350°F	0.32 - 0.34	250°F	4.5	5.0	5.0	5.0	5.0		
251°F - 350°F	0.29 - 0.32	200°F	3.0	4.0	4.5	4.5	4.5		
201°F - 250°F	0.27 - 0.30	150°F	2.5	2.5	2.5	3.0	3.0		
141°F - 200°F	0.25 - 0.29	125°F	1.5	1.5	2.0	2.0	2.0		
105°F - 140°F	0.21 - 0.28	100°F	1.0	1.0	1.5	1.5	1.5		
40°F - 60°F	0.21 - 0.27	75°F	0.5	0.5	1.0	1.0	1.0		
< 40°F	0.20 - 0.26	75°F	0.5	1.0	1.0	1.0	1.5		

PIPE INSULATION NOTES:
 1. REFER TO MECHANICAL SPECIFICATION DRAWINGS FOR ADDITIONAL INFORMATION.
 2. ALL MINIMUM REQUIRED PIPING INSULATION VALUES SHALL COMPLY WITH THE 2020 NYC ENERGY CONSERVATION CODE ESTABLISHED VALUES.

AIR BALANCE SCHEDULE						
UNIT	OUTSIDE AIR TO UNITS	RETURN AIR TO UNITS	SUPPLY AIR FROM UNITS	EQUALIST AIR OUT OF BUILDING	BUILDING PRESSURE	
ACU-1	450	2540	2540	-	+450	
ACU-2	260	2540	2540	-	+260	
ACU-3	150	1270	1270	-	+150	
MAU-1	2163	-	-	-	+2163	
KEP-1	-	-	-	2606	-2606	
TOILET EXHAUST	-	-	-	180	-180	
				TOTAL	+267	

ISSUE DATE	NO. / REV	REVISION	DATE
08-12-2024	SD	SUBMISSION SET	
09-10-2024	RT	DOCLAND AND REVIEW SET	
11-22-2024	R2	ISSUED FOR BID	
12-17-2024	R3	ADDENDUM 1	
04-26-2025		ISSUED FOR CONSTRUCTION	

LEGAL: THESE PLANS AND SPECIFICATIONS, AS WELL AS NEW YORK DESIGN ARCHITECTS LLP ARCHITECTS, LLP NAME AND LOGO, TRADEMARKS AND DESIGN ARE THE PROPERTY OF NEW YORK DESIGN ARCHITECTS LLP. ANY REPRODUCTION, MODIFICATION, DISSEMINATION AND/OR USE OF THESE MATERIALS OR ANY PORTION OF THEM WITHOUT PRIOR WRITTEN CONSENT IS STRICTLY PROHIBITED. CONTRACTOR SHALL NOT SCALE OFF THESE DRAWINGS FOR ANY REASONS. THE ARCHITECT/ENGINEER OF RECORD TAKE NO RESPONSIBILITY FOR WORK BEING PERFORMED BY SCALING OFF DRAWINGS. ALL DIMENSIONS SHALL BE LAID OUT IN ACCORDANCE TO BUILDING DEPT. APPROVED DRAWINGS. ANY DISCREPANCIES WITH FIELD DIMENSIONS AND DIMENSIONS INDICATED ON APPROVED DRAWINGS SHALL BE MADE HERE TO THE ARCHITECT/ENGINEER OF RECORD. PRIOR TO COMMENCEMENT OF WORK, COMMENCEMENT OF WORK INDICATES ACCEPTANCE OF ALL COMPONENTS INDICATED ON APPROVED DRAWINGS. THIS DOCUMENT IS PROTECTED UNDER TITLE 17 US CODE. ANY ALTERATION BY ANY PERSON OTHER THAN THE AUTHOR OF SUCH DOCUMENT IS ILLEGAL AND SUBJECT TO PROSECUTION. (2018.10.17)



ARCHITECT:
new york design
 ARCHITECTS LLP
 GIUSEPPE R. ANZALONE, AIA
 JOSEPH J. SERRANO, AIA
 175 WEST BROADWAY, NEW YORK, NY 10013
 TEL: (212) 680 0140, FAX: (212) 658 9548
 www.newyorkdesign.com

ADDRESS:
 1000 8TH AVENUE
 (a.k.a. 4 COLUMBUS CIRCLE)
 NEW YORK, NY 10019

PROJECT NO. | DATE:
23195 | **02/26/2024**
 PARTNER IN CHARGE | PROJECT MANAGER | DRAWN BY:
JS | **IS** | **HN/DT**

SHEET CONTENTS:
MECHANICAL SCHEDULES

SHEET: | PAGE NO:
M-300.00 | **04 of 16**

ISSUED FOR CONSTRUCTION SET - 04/25/2025

JOB NUMBER: