







EVERETT  
 Joshua Everett  
 (503) 348-8554  
 jeverett@everettengineering.com

**FOR CONSTRUCTION**

OWNER'S USE  
 THIS SCHEDULE IS AN INSTRUMENT OF SERVICE  
 AND IS NOT TO BE REPRODUCED OR TRANSMITTED  
 IN ANY FORM OR BY ANY MEANS, ELECTRONIC OR  
 MECHANICAL, INCLUDING PHOTOCOPYING, RECORDING,  
 OR BY ANY INFORMATION STORAGE AND RETRIEVAL  
 SYSTEM, WITHOUT THE WRITTEN PERMISSION OF  
 EVERETT ENGINEERING, INC.



CHIPOTLE MEXICAN GRILL, INC.  
 2305 ASHLAND ST., SUITE 101  
 ASHLAND, OR 97132  
 STORE NO.: 36-5592  
 ASHLAND - OR  
 2305 ASHLAND ST., SUITE 101  
 ASHLAND, OR 97132

**VIROGUARD SCHEDULE**

TAG	COUNT	DESCRIPTION	FURNISHED BY	INSTALLED BY	MANUFACTURER	MODEL	REMARKS
VS-1	1	VIROGUARD FOOD SERVICE FAN ROOFTOP CONTAMINATION SYSTEM	GC	GC	DAIWA	VS-1	

**SANITIZING EQUIPMENT SCHEDULE**

TAG	COUNT	DESCRIPTION	FURNISHED BY	INSTALLED BY	MANUFACTURER	MODEL	REMARKS
S-1	2	BATHROOM AIR PURIFICATION UNIT	GC	GC	BRU ASSOCIATES	S-1	SEE ELECTRICAL SHEETS FOR CONNECTION INFORMATION
S-1.1	1	INDIC AIR PURIFICATION UNIT	GC	GC	RFI ENVIRONMENTAL GROUP	RFI-100	SEE ELECTRICAL SHEETS FOR INSTALLATION INFORMATION
S-1.2	1	ULTRAVIOLET TREATMENT SYSTEM	GC	GC	RFI ENVIRONMENTAL GROUP	RFI-100	SEE ELECTRICAL SHEETS FOR INSTALLATION INFORMATION

**FAN SCHEDULE**

TAG	DESCRIPTION	AIRFLOW	E.S.P.	WEIGHT	WATER POWER	VOLTS	FURNISHED BY	INSTALLED BY	MANUFACTURER	MODEL	REMARKS
F1-1	UPPLAST UL102 EXHAUST FAN	2,500 CFM	1.20 in-Hg	450 lb	3 hp	208/240	GC	GC	CAPTEK AIRE	UL102H/A	DIRECT DRIVE TULZE LUBRIC OIL-FREE FAN FURNISHED WITH WALKER COOLER, WIND-RAND EXTENSION AND VIBRATION ISOLATION
F1-2	DOWNDRAFT REEDEMER 2X16X16 FAN	150 CFM	0.50 in-Hg	100 lb	0.18 hp	120/240	GC	GC	CAPTEK AIRE	DL16H/A	DIRECT DRIVE REEDEMER REEDEMER EXHAUST FAN FURNISHED WITH INTERNAL DISCONNECT, FAN PROTECTIVE HOOD, WIND-RAND EXTENSION AND WALKER COOLER

**CONDENSING UNIT SCHEDULE**

TAG	DESCRIPTION	NOMINAL CAPACITY	NUMBER OF COMPRESSORS	REFRIGERANT TYPE	WEIGHT	MOCP	ELECTRICAL	FURNISHED BY	INSTALLED BY	MANUFACTURER	MODEL	REMARKS
CU-1	CONDENSING UNIT - WALL MOUNTED	1	1	R-404A	10.4 lb	35.0 lb	115 V	GC	GC	HANBOND	HC1000R01-31	FURNISHED WITH WALKER COOLER
CU-2	REMOTE CONDENSER - LOW FANNOY WALL MOUNTED	0	1	R-404A	0 lb	150 lb	208/240	GC	GC	SCOTTSMAN	ENC23-32	FURNISHED WITH ICE MAKER

**MAKEUP AIR UNIT SCHEDULE - EVAPORATIVE COOLED**

TAG	DESCRIPTION	AIRFLOW	E.S.P.	INPUT	OUTPUT	WEIGHT	WATER FLOW RATE	WEIGHT	ELECTRICAL	FURNISHED BY	INSTALLED BY	MANUFACTURER	MODEL	REMARKS
MAU-1	DIRECT DRIVE MAKEUP AIR UNIT W/ WALKER COOLER	5,000 CFM	0.80 in-Hg	375,000 Btu/h	200,000 Btu/h	217 lb	100.0 GPM	67.0 TYP	3 PHASE	GC	GC	CAPTEK AIRE	AT-2,250-610	37.5 GPM WALKER COOLER, FURNISHED WITH DISCONNECT, ROOF CURB, FAN COOLER, SCREW DRIVE, AND WIND-RAND EXTENSION

**KITCHEN HOOD SCHEDULE**

TAG	DESCRIPTION	MAX COOKING TEMP	AIRFLOW	E.S.P.	INPUT	OUTPUT	WEIGHT	WATER FLOW RATE	WEIGHT	ELECTRICAL	FURNISHED BY	INSTALLED BY	MANUFACTURER	MODEL	REMARKS
HH-1	TYPE I EXHAUST HOOD WITH INTEGRATED MAKEUP AIR AND SUPPLY PLUMBING	350°F	2,500 CFM	0.50 in-Hg	117,000 Btu/h	117,000 Btu/h	117 lb	117 GPM	117 lb	208/240	GC	GC	CAPTEK AIRE	HH-1	HALL BECA TYPE 4835, COINTEGRATED WITH VERTICAL BRACKET, VAPORFOOT CONDENSATE LIGHT SYSTEM, 18" TALL 50" FILTER, INTERNAL UTILITY CABINET, KITCHEN EXHAUST SUPPRESSION FOR THE DUCT TO CLEAR THROUGH THE LUNDS, PROVIDE FRESH AIR FROM THE SYSTEM DRY CONTACT, AND A FUSE DISCONNECT

**ROOFTOP UNIT SCHEDULE, GAS HEAT**

TAG	DESCRIPTION	NOMINAL CAPACITY	SEER	INPUT	OUTPUT	WEIGHT	WATER FLOW RATE	WEIGHT	ELECTRICAL	FURNISHED BY	INSTALLED BY	MANUFACTURER	MODEL	REMARKS
RTU-1	ROOFTOP UNIT	150,000 BTU/H	13.0	1,200 CFM	1,200 CFM	1,200 lb	1,200 GPM	1,200 lb	208/240	GC	GC	DAKOTA	RTU-1	PROVIDE PACKAGED ROOFTOP UNIT TO REMAIN
RTU-2	ROOFTOP UNIT	150,000 BTU/H	13.0	1,200 CFM	1,200 CFM	1,200 lb	1,200 GPM	1,200 lb	208/240	GC	GC	DAKOTA	RTU-2	PROVIDE PACKAGED ROOFTOP UNIT TO REMAIN

**ROOFTOP UNIT SCHEDULE, HEAT PUMP**

TAG	DESCRIPTION	NOMINAL CAPACITY	SEER	INPUT	OUTPUT	WEIGHT	WATER FLOW RATE	WEIGHT	ELECTRICAL	FURNISHED BY	INSTALLED BY	MANUFACTURER	MODEL	REMARKS
RTU-3	ROOFTOP UNIT	150,000 BTU/H	13.0	1,200 CFM	1,200 CFM	1,200 lb	1,200 GPM	1,200 lb	208/240	GC	GC	DAKOTA	RTU-3	PROVIDE PACKAGED ROOFTOP UNIT TO REMAIN, PROVIDE ELECTRIC HEATER WITH SINGLE POINT WIRING KIT AS SPECIFIED IN THIS SCHEDULE
RTU-4	ROOFTOP UNIT	150,000 BTU/H	13.0	1,200 CFM	1,200 CFM	1,200 lb	1,200 GPM	1,200 lb	208/240	GC	GC	DAKOTA	RTU-4	PROVIDE PACKAGED ROOFTOP UNIT TO REMAIN, PROVIDE ELECTRIC HEATER WITH SINGLE POINT WIRING KIT AS SPECIFIED IN THIS SCHEDULE

**AIR BALANCE SCHEDULE**

TAG	SUPPLY FLOW	RETURN FLOW	EXHAUST FLOW	SUBTOTAL
E1-1	0 CFM	0 CFM	2,500 CFM	2,500 CFM
E1-2	0 CFM	0 CFM	150 CFM	150 CFM
SP-1	1,500 CFM	0 CFM	0 CFM	1,500 CFM
SP-2	1,500 CFM	0 CFM	0 CFM	1,500 CFM
SP-3	2,200 CFM	0 CFM	0 CFM	2,200 CFM
SP-4	2,200 CFM	0 CFM	0 CFM	2,200 CFM
NET PRODUCTION	0 CFM	0 CFM	0 CFM	0 CFM

**AIR TERMINAL SCHEDULE**

TAG	DESCRIPTION	FACE SIZE	MATERIAL	FINISH	MOUNTING	FURNISHED BY	INSTALLED BY	MANUFACTURER	MODEL	REMARKS
EDR	DOUBLE EXHAUST	24" X 24"	ALUMINUM	WHITE	WALL	GC	GC	INTEGRAL	EDR	PROVIDE UP BY INTEGRAL CDB
CD	PERFORATED CEILING DIFFUSER	24" X 24"	ALUMINUM	WHITE	LAN HANGING	GC	GC	INTEGRAL	CD	PROVIDE UP BY INTEGRAL CDB
CD	PERFORATED CEILING DIFFUSER	24" X 24"	ALUMINUM	WHITE	LAN HANGING	GC	GC	INTEGRAL	CD	PROVIDE UP BY INTEGRAL CDB, REMOVED 4 WAY DIFFUSERS
ED	PERFORATED CEILING DIFFUSER	12" X 12"	ALUMINUM	WHITE	SURFACE MOUNT	GC	GC	INTEGRAL	ED	PROVIDE UP BY INTEGRAL CDB
ED	PERFORATED CEILING DIFFUSER	12" X 12"	ALUMINUM	WHITE	SURFACE MOUNT	GC	GC	INTEGRAL	ED	PROVIDE UP BY INTEGRAL CDB
ED	PERFORATED CEILING DIFFUSER	24" X 24"	ALUMINUM	WHITE	LAN HANGING	GC	GC	INTEGRAL	ED	PROVIDE UP BY INTEGRAL CDB
ED	PERFORATED CEILING DIFFUSER	24" X 24"	ALUMINUM	WHITE	SURFACE MOUNT	GC	GC	INTEGRAL	ED	PROVIDE UP BY INTEGRAL CDB
SD	DOUBLE EXHAUST	24" X 24"	STEEL	WHITE	WALL	GC	GC	TITUS	SD	PROVIDE UP BY INTEGRAL CDB

**CONTROL FUNCTIONS**

- THE MAIN COOLING EXHAUST FAN AND MAKEUP AIR UNIT SHALL BE INTERLOCKED TO OPERATE TOGETHER. THIS CONTROL CIRCUIT IS ACTIVATED BY A SWITCH AND WILL BE A FRESH AIR FLOW SWITCH.
- THE TEMPERATURE IN EACH ZONE IS CONTROLLED BY SPACE TEMPERATURE SENSORS CONNECTED TO THE THERMOSTATS LOCATED IN THE ZONE. ALL ZONES SHALL OPERATE IN THE CONTINUOUS FAN OPERATION MODE. OCCUPANCY SENSORS IN ZONE 101 SHALL BE USED TO SHUT DOWN THE POINTS DURING UNOCCUPIED PERIODS. OUTSIDE AIR DAMPERS SHALL BE OPEN CONTINUOUSLY WHEN OUTSIDE AIR IS REQUIRED. WHEN THE ROOM TEMPERATURE IS LOW AND SHALL BE CLOSED DURING UNOCCUPIED PERIODS.
- THE THERMOSTATS SHALL BE FAN ON. OCCUPANCY SENSORS SHALL BE BASED ON THE SCHEDULE IN THE TIME OF MANAGEMENT SYSTEM.

DATE ISSUED: 07/23/2020  
 DATE REVISED: 08/03/2020  
 DRAWN: JAE  
 CHECKED: JAE  
 PROJECT: 240009  
 SHEET: 01 OF 01

HVAC SCHEDULES  
**M600**













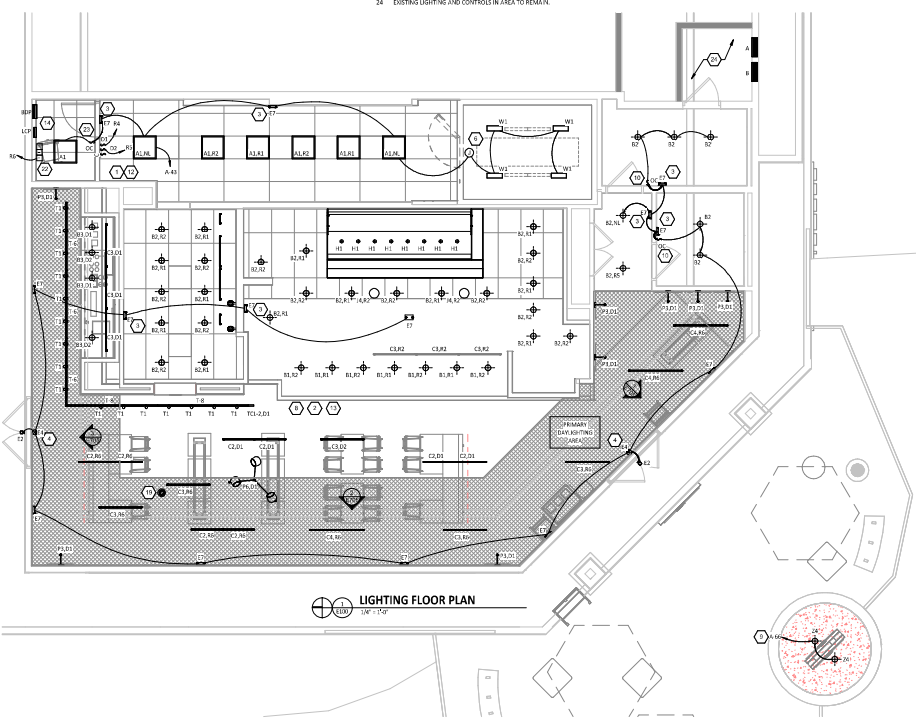


DESCRIPTION	QUANTITY	FINISHED	INSTALL	MANUFACTURER	MODEL	REMARKS
1.0 LIGHTS (SEE SENSOR PHOTOCELL)	1	YES	GC	ACQUITY	EV-1011-R-1P	DEAL TRIP SIGNAL, MOTION AND DEGREE MOTION COVERAGE, LOW VOLTAGE RELAY & PHOTOCELL
1.1 PHOTOCELL	1	YES	GC	ACQUITY	EV-1011-R-1P	5-200 DIMMING RANGE RELAY
1.2 DIMMING RELAY	1	YES	GC	ACQUITY	EV-1011-R-1P	5-200 DIMMING RANGE RELAY
1.3 PHOTOCELL CONTROL PANEL	1	YES	GC	ACQUITY	EV-1011-R-1P	5-200 DIMMING RANGE RELAY
1.4 WALL MOUNTED DIMMER SWITCH	2	YES	GC	COOPER	SDLOPP-W	5-200 DIMMING RANGE RELAY, 15" H X 15" D, 300V LED LIGHTS, SEE AT 427. IF DINING ROOM LOCATED FLOOR AT THIS DIMMERS AT FLOOR THEN GC SHALL PROVIDE LITRION DVC-2P DIMMER AS REPLACEMENT
1.5 WALL MOUNTED LINE VOLTAGE OCCUPANCY SENSOR	1	YES	GC	HUBBELL	12WVTS 1-R 9W	WITH 2-DUAL TECHNOLOGY SINGLE RELAY WITH 1-BUTTON AND NEUTRAL WIRING

RELAY	PANEL	CIRCUIT	AREA SERVED	CONTROL	TIME ON	TIME OFF	DIMMER CONTROL	NOTES
R1	A	43	KITCHEN A	TIMECLOCK	7:00:00 AM	11:00:00 AM	NO	SINGLE POLE (NO)
R2	A	43	KITCHEN B	TIMECLOCK	7:00:00 AM	11:00:00 AM	N/A	SINGLE POLE (NO)
R3	A	36	BAR	TIMECLOCK	7:00:00 AM	11:00:00 AM	NO	SINGLE POLE (NO)
R4	A	36	DINING ROOM A	TIMECLOCK	10:00:00 AM	11:00:00 AM	N/A	SINGLE POLE (NO)
R5	A	36	DINING ROOM B	TIMECLOCK	10:00:00 AM	11:00:00 AM	NO	SINGLE POLE (NO)
R6	A	33	DINING ROOM D	TIMECLOCK	10:00:00 AM	11:00:00 AM	PHASO	SINGLE POLE (NO)
R7	A	32	RESTROOM	TIMECLOCK	7:00:00 AM	11:00:00 AM	N/A	SINGLE POLE (NO)
R8	A	35	EXIT LIGHTING	TIMECLOCK	7:00:00 AM	11:00:00 AM	N/A	SINGLE POLE (NO)

SPACE	LOCAL CONTROL	REMOTE CONTROL	PHOTOCELL CONTROL	PHOTOCELL CONTROL	PHOTOCELL CONTROL	PHOTOCELL CONTROL	PHOTOCELL CONTROL	PHOTOCELL CONTROL	PHOTOCELL CONTROL	PHOTOCELL CONTROL	PHOTOCELL CONTROL
BAR	NO	NO	NO	NO	NO	NO	NO	NO	NO	NO	NO
DINING ROOM	NO	NO	NO	NO	NO	NO	NO	NO	NO	NO	NO
KITCHEN	NO	NO	NO	NO	NO	NO	NO	NO	NO	NO	NO
RESTROOM	NO	NO	NO	NO	NO	NO	NO	NO	NO	NO	NO

- ### ELECTRICAL LIGHTING PLAN NOTES
1. RETAIL WALL MOUNTED LIGHTING OVERHEAD SWITCH AND CONNECT TO LCP AS SHOWN IN DETAIL 62710
  2. FOR UNMOUNTED LIGHT FIXTURES, CONNECT TO RELAY CIRCUIT. INDICATED "NO" TO THE FIXTURE TAG THROUGH THE LIGHTING CONTROL PANEL (LCP) UNLESS NOTED OTHERWISE.
  3. WALL MOUNT THE EMERGENCY LIGHT FIXTURE AT 8" BELOW THE CEILING UNLESS NOTED OTHERWISE.
  4. VERIFY MOUNTING HEIGHT OF 8" IS SUFFICIENT TO PROTECT FROM AREA SHOWER AT EXTERIOR BUILDING SYSTEMS HAVE BEEN INSTALLED. SEE ARCHITECTURAL ELEVATIONS FOR FURTHER INFORMATION.
  5. NOT USED.
  6. INSTALL LIGHT FIXTURES FURNISHED WITH THE WALK-IN COOLER. PROVIDE UNMOUNTED CONDUIT FROM LIGHTING CIRCUIT TO WALK-IN COOLER LIGHTING J BOX AND FROM J BOX TO LIGHT FIXTURES AS SHOWN. CONDUIT AT TWO IN (2) IN HEIGHT FIXTURES SHALL BE ROUTED ON THE INTERIOR OF THE WALK-IN COOLER. SEAL INTERIOR AND EXTERIOR OF CONDUITS WHILE THEY PASS THROUGH THE WALK-IN COOLER ENVELOPE FOR THE IFC.
  7. NOT USED.
  8. PROVIDE UNMOUNTED AS SHOWN ON THE ARCHITECTURAL. REFER THE ARCHITECTURAL UNMOUNTED DETAIL, TYPICAL.
  9. CONNECT EXTERIOR LIGHTING CIRCUIT TO THE CIRCUIT SHOWN THROUGH THE LIGHTING CONTRACTOR PANEL PER DETAIL 62710.
  10. INSTALL WALL MOUNTED OCCUPANCY SENSOR FURNISHED BY LIGHTING SUPPLIER AT 427 AFF. ADJUST OCCUPANCY SENSOR TO PROVIDE AUTOMATIC ON/AUTOMATIC OFF OPERATION WITH A TIME DELAY OF 30 MINUTES AND WITH BOTH THE PASSIVE INFRARED AND ULTRASONIC SENSORS ENABLED.
  11. NOT USED.
  12. INSTALL WALL MOUNTED DIMMERS ABOVE CEILING. LOCATION SHOWN "A" ABOVE 144" IN CEILING FOR CONTROL OF DINING ROOM OVERHEAD STRIP LED AND PENDANT LIGHTS. CONNECT DIMMERS TO RELAYS SHOWN THROUGH THE LIGHTING CONTROL PANEL. SET DIMMERS AT 50%.
  13. CONNECT DINING ROOM AREA CIRCUITS AND RES OVERHEAD STRIP LED LIGHTS TO THE RELAY INDICATED THROUGH THE CORRESPONDING WALL MOUNTED DIMMER INSTALLED ABOVE THE PANEL DECK.
  14. RETAIL LIGHTING CONTROL SYSTEM PER DETAIL 62710.
  15. NOT USED.
  16. NOT USED.
  17. NOT USED.
  18. NOT USED.
  19. INSTALL THE DRAWING PHOTOCELL PER THE MANUFACTURER'S INSTALLATION INSTRUCTIONS. CONNECT 1/4" CAT5 CABLE TO MASTER RELAY PANEL.
  20. NOT USED.
  21. NOT USED.
  22. INSTALL RELAYS AND SENSORS IN SERIES, BARRY CHAIR AS SHOWN AND CONNECT TO RELAY PANEL PER DETAIL 62710. PROVIDE BUS GUTTER ABOVE THE CEILING IN THIS LOCATION FOR INSTALLATION OF POWER RACKS AND REAR PANEL OF THE LIGHTING CONTROL DIAGRAM. FIELD COORDINATE EXACT LOCATION WITH PROJECT'S CONSTRUCTION MANAGER PRIOR TO START OF WORK. INSTALL PER MANUFACTURER'S INSTALLATION INSTRUCTIONS.
  23. INSTALL WALL MOUNTED OCCUPANCY SENSOR WITH DIMMING CONTROL FURNISHED BY LIGHTING SUPPLIER AT 427 AFF. ADJUST OCCUPANCY SENSOR TO PROVIDE MANUAL ON/AUTOMATIC OFF OPERATION WITH A 30-SECOND TIME DELAY OF 30 MINUTES AND WITH BOTH THE PASSIVE INFRARED AND ULTRASONIC SENSORS ENABLED.
  24. EXISTING LIGHTING AND CONTROLS ARE TO REMAIN.



**FOR CONSTRUCTION**

CONTACT: Joshua Everett  
 (503) 948-8554  
 jeverett@everettengineering.com

DATE: 08/11/2020  
 DRAWN: JPP  
 CHECKED: JAE  
 PROJECT: 240089  
 ELECTRICAL LIGHTING PLAN  
 E100





