



## RESUBMITTAL COVER SHEET

### PROJECT

Cincinnati Classical Academy

### ENGINEER

Cunning and Associates

### ARCHITECT

Silverpeak Engineering

### SPECIFICATIONS NO.

CEF-01,02,03,04 PAGE 3  
REF-01 PAGE 4

### ITEM

Ceiling Exhaust Fans

Resubmittal #: 007.2

- Approved
- Disapproved

Date: 2/14/2025

Submitted by: David Day

The review of these shop drawings or documents is for general conformance with the design concept and information given in the Contract Documents. Corrections or comments made on this submittal during this review do not relieve the contractor from compliance with the requirements of the drawings, specifications, and applicable building codes. Responsibility and liability is with the Contractor for: the function, performance and dimensional fit of the items described in accordance with the requirements of the Contract Documents; coordination of the work with all other trades and performing all work in a safe and satisfactory manner; selection of fabrication processes, means, methods, techniques, sequences and procedures of construction.

- No Comment
- Note Markings
- Revise and Resubmit
- Rejected



By: mkellerstra  
Date: 03/27/2025

Proudly Serving Dayton, Cincinnati & Columbus Ohio

Headquarters  
4401 Springfield Street  
Dayton, OH. 45341

800.254.9455  
www.msdlnc.net  
OH 24297 KY HM00345

Cincinnati Office  
2866 E. Kemper Road  
Cincinnati, OH. 45241



# COOK

# SUBMITTAL

**PROJECT:** CINCINNATI CLASSICAL ACADEMY

**ENGINEER:** Cuning & Associates

**CONTRACTOR:** MSD

**SUBMITTED BY:** Greg Stanaford  
Controlled Air, Inc.  
12009 Tramway Drive  
Cincinnati, OH 45241

**PHONE:** 513-769-6600  
**E-MAIL:** greg@controlled-air.com

**DATE:** 1/27/2025

---

**LOREN COOK COMPANY**



Corporate Offices: 2015 E. Dale Street, Springfield, MO 65803 • P.O. Box 4047, Springfield, MO 65808  
417.869.6474 • fax 417.869.2520  
lorencook.com



# COOK



MARK: CEF 01,02,03,04

PROJECT: CINCINNATI CLASSICAL ACADEMY

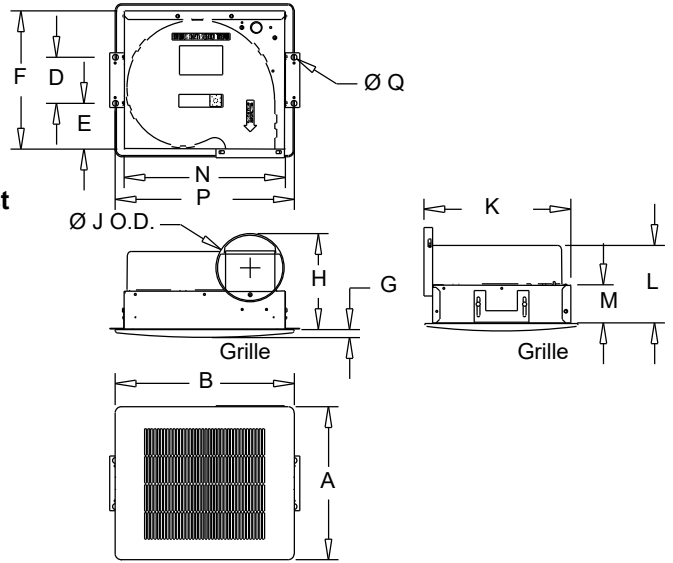
DATE: 1/27/2025

## GEMINI

### Ceiling Fans 100 Series

#### STANDARD CONSTRUCTION FEATURES:

Forward curved injection molded polypropylene fan wheel -  
 Injection molded flame resistant fan housing with round outlet duct -  
 22 ga. galvanized steel inlet box - Isolation mounted motor, mounted to one piece galvanized stamped steel integral motor mount/inlet -  
 Permanently lubricated 2-speed motor with built-in thermal overload protection and disconnect plug -  
 Field wiring compartment with receptacle - Adjustable prepunched mounting bracket -  
 White, high impact styrene injection molded grille -  
 Shipped in ISTA certified transit tested packaging.



#### Performance

Qty	Catalog Number	Flow (CFM)	SP (inwc)	Nominal RPM	Input Watts
4	GC-148	119	.375	1075	44

Altitude (ft): 1004 Temperature (F): 70

#### Motor Information

Volts/Ph/Hz	Nameplate Amps
115/1/60	.417

#### Sound Data Inlet Sound Power by Octave Band

1	2	3	4	5	6	7	8	LwA	dBA	Sones
53	54	57	56	51	44	41	34	56	45	2.5

- Distance from Sound source 5 ft

#### Accessories:

- ROOF CAP-CRB W/BDSCR
- WHITE STEEL GRILLE
- INTEGRAL BD DAMPER
- GEMINI ISOLATOR KIT - ISOLATORS
- ROOF CURB RCG 16-18H

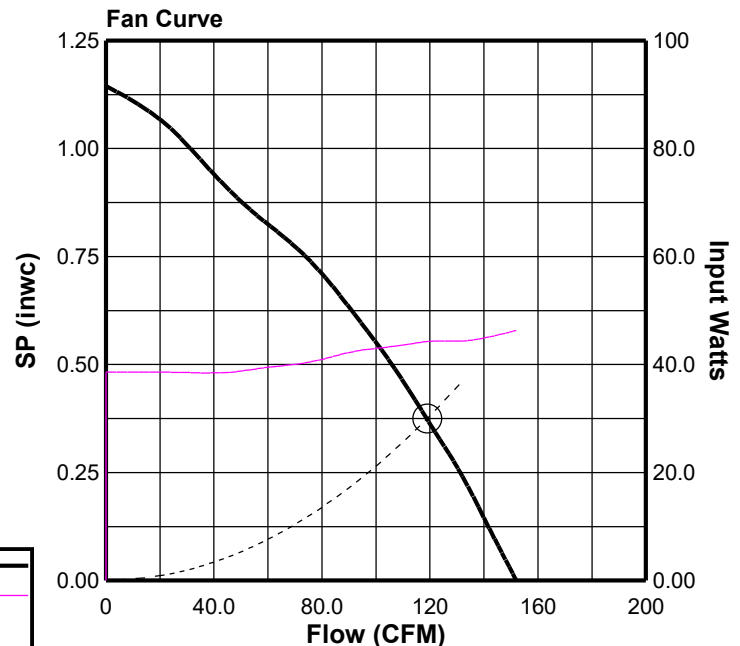
#### Dimensions (inches)

A Steel	13-1/2	M	3-1/4
B Steel	15-1/2	N	14
D	4	P	15-1/2
E	4	Q	1/2
F	12	Q	1/2
G	5/8		
H	8-3/8		
J O.D.	5-15/16		
K	12-3/4		
L	6-11/16		

NOTE: Accessories may affect dimensions shown.

Weight(lbs)***	Shipping	63	Unit	60
----------------	----------	----	------	----

\*\*\*Includes fan, motor & accessories.





# COOK



MARK: REF 01

PROJECT: CINCINNATI CLASSICAL ACADEMY

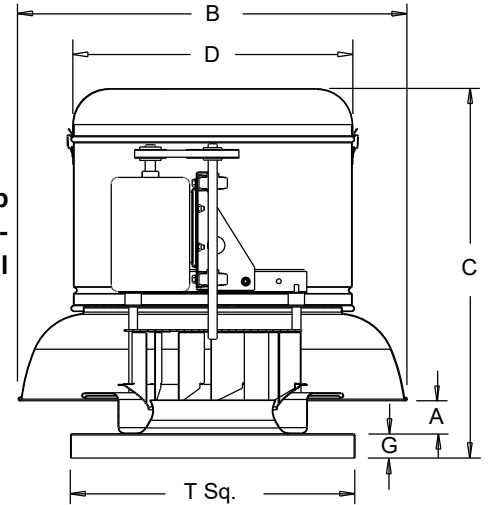
DATE: 1/27/2025

## ACE-B

### Downblast Centrifugal Exhaust Ventilator Roof Mounted/Belt Drive

#### STANDARD CONSTRUCTION FEATURES:

All aluminum housing - Backward inclined all aluminum wheel - Two piece top cap with stainless steel quick release latches - Welded curb cap corners - Birdscreen - Vibration isolators - Lifting Lugs - Permanently lubricated ball bearing motors - Oil and heat resistant, static conducting belts - Adjustable pitch drives through 5 hp motor - Corrosion resistant fasteners - Regreasable bearings in a cast iron pillow block housing, rated at 200,000 hours average life - All fans factory adjusted to specified fan RPM - Transit tested packaging - Standard motors ship factory installed.



#### Performance (\*Bhp includes 14% drive loss)

Qty	Catalog Number	Flow (CFM)	SP (inwc)	Fan RPM	Power* (HP)	FEG
1	150C5B	1650	.750	1156	.372	n/a(<1HP)

Altitude (ft): 1004 Temperature (F): 70

#### Motor Information

HP	RPM	Volts/Ph/Hz	Enclosure	FLA	Mounted
1/2	1725	115/1/60	ODP -SE	9.8	Yes

FLA based on NEC (2017) Table 430.248

#### Sound Data Inlet Sound Power by Octave Band

1	2	3	4	5	6	7	8	LwA	dBA	Sones
73	76	77	68	65	62	56	52	72	61	10.8

- Distance from Sound source 5 ft

#### Accessories:

DRIVES (1.5 SF) @ 1156 RPM  
DISCONNECT NEMA 1 PRE-WIRED FLEX  
BD-18 DAMPER  
ROOF CURB RCG 22 18H -C-T+N

#### Dimensions (inches)

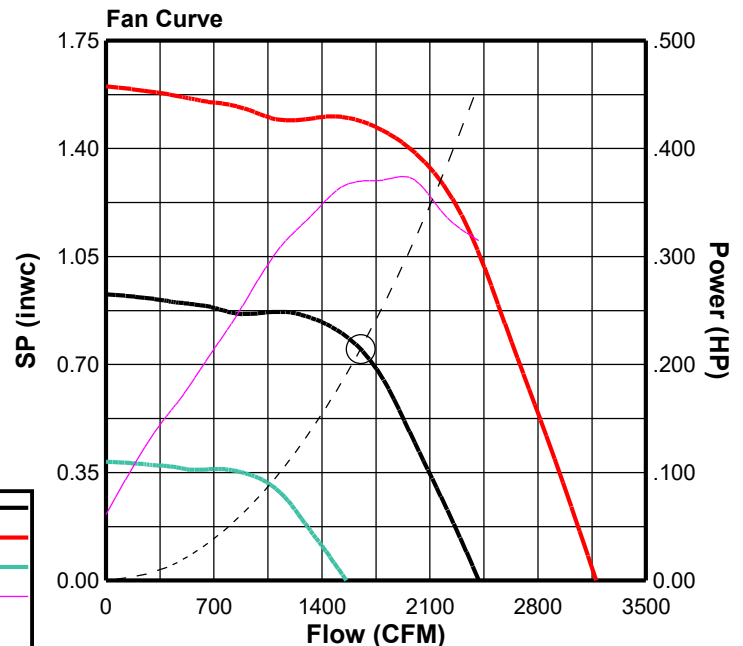
A	3-1/16
B	32-7/8
C	28-7/8
D	23-3/4
G	2
T Sq.	24
Roof Open.Sq.*	19-1/2

NOTE: Accessories may affect dimensions shown.

Weight(lbs)***	Shipping	152	Unit	126
----------------	----------	-----	------	-----

\*Roof opening size for curbs supplied by Cook only.

\*\*\*Includes fan, motor & accessories.





# COOK

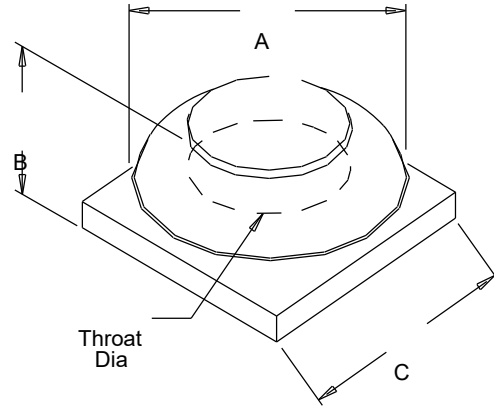
PROJECT: CINCINNATI CLASSICAL ACADEMY
DATE: 1/27/2025

## GEMINI

### ROOF CAP Curb Mount

#### STANDARD CONSTRUCTION FEATURES:

Aluminum construction - Anti-backdraft flange  
 Optional birdscreen - PR8, PR12, PR16, and PR20 are curb mount.

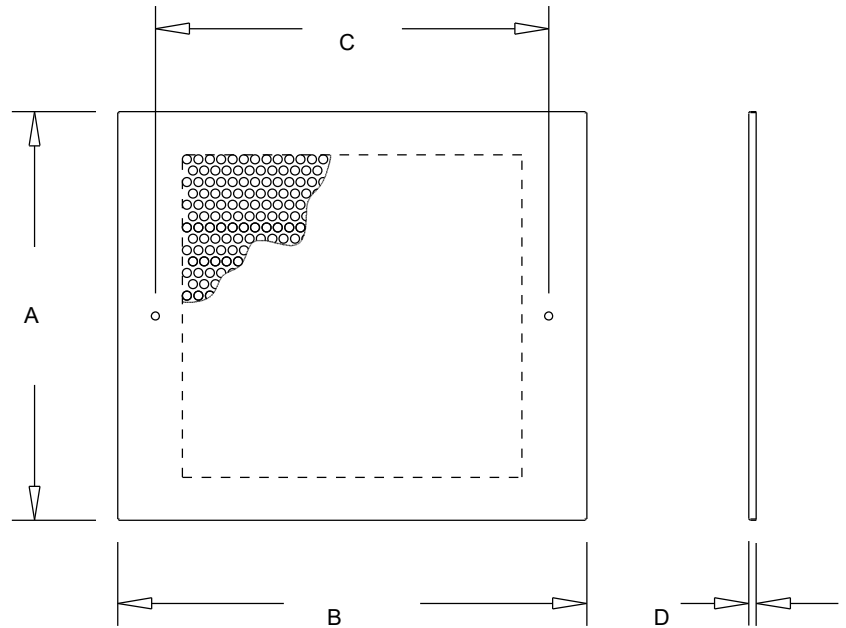


#### Dimensions (inches)

Mark	Qty	Description	A	B	C	Throat Dia.
CEF 01,02,03,04	4	ROOF CAP-CRB W/BDSCR	18-1/4	10-1/8	18	8-19/32



## GEMINI STEEL GRILLE



### Dimensions (inches)

Mark	Qty	Description	A	B	C	D
CEF 01,02,03,04	4	WHITE STEEL GRILLE	13-1/2	15-1/2	13	1/4

### SUBMITTAL REVIEW

Submission of information by the Contractor is taken as evidence that the Contractor has prepared the information for the specific application, and has verified that adequate and complete conditions for installation and subsequent operation and maintenance will exist.

Engineers review is for general conformance with the design concepts of the project, and for general compliance with the information given in the contract documents. The Contractor is responsible for access and clearance code compliance, work methods and conditions, coordination of trades, safety, all in satisfactory performance of work.

- NO EXCEPTIONS TAKEN       REJECTED-RESUBMIT  
 EXCEPTIONS AS NOTED       REVISE AND RESUBMIT

CUNNING & ASSOCIATES MCE

Date: Feb 18 2025

By: Norm Cunning



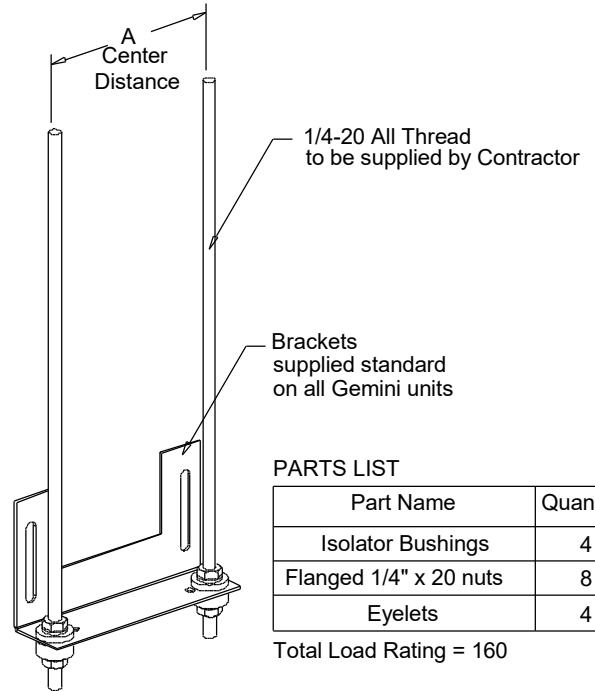
# COOK

PROJECT: CINCINNATI CLASSICAL ACADEMY

DATE: 1/27/2025

## GEMINI

Gemini Isolator Kit  
GIK  
Rubber In Shear



### Dimensions (inches)

Mark	Qty	Description	Part #	A
CEF 01,02,03,04	4	GEMINI ISOLATO	GIK	4



# RCG

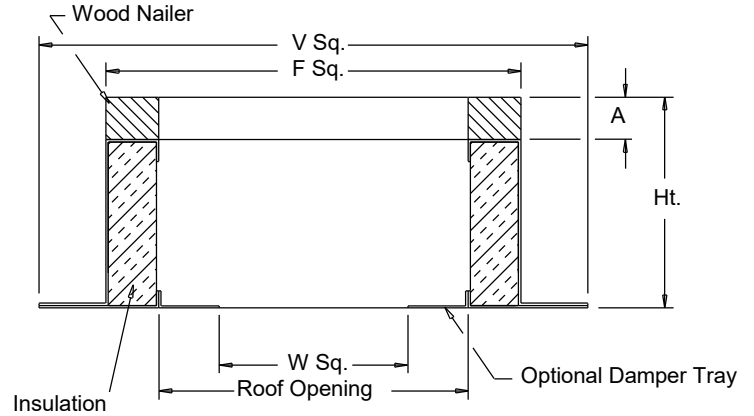
## Galvanized Steel Roof Curb

### STANDARD CONSTRUCTION FEATURES:

18 gauge galvanized steel - 1-1/2",  
 3 lbs. density thermal and acoustical insulation - Continuously welded corners - Wood nailer.

### Options:(As noted below\*)

- 1) No wood nailer (deduct 1-1/2" for actual height).
- 2) Damper tray.
- 3) Liner.
- 4) Gasket on wood nailer.
- 5) Lorenized coating.
- 6) Enamel coating.
- 7) Burglar bars.



### Dimensions (inches)

Mark	Qty	Description	Ht	Options*	A	F Sq.	V Sq.	W Sq.	Roof Opening
CEF 01,02,03,04	4	RCG 16	18	-	1-1/2	16-1/2	20-1/2	9-3/4	13-1/2
REF 01	1	RCG 22	18	-	1-1/2	22-1/2	26-1/2	15-3/4	19-1/2



## BD

### Gravity Backdraft Damper

#### STANDARD CONSTRUCTION FEATURES:

.020 Aluminum blades - .060 aluminum frame -  
Aluminum hinge pins - Nylon bushings.

#### Notes:

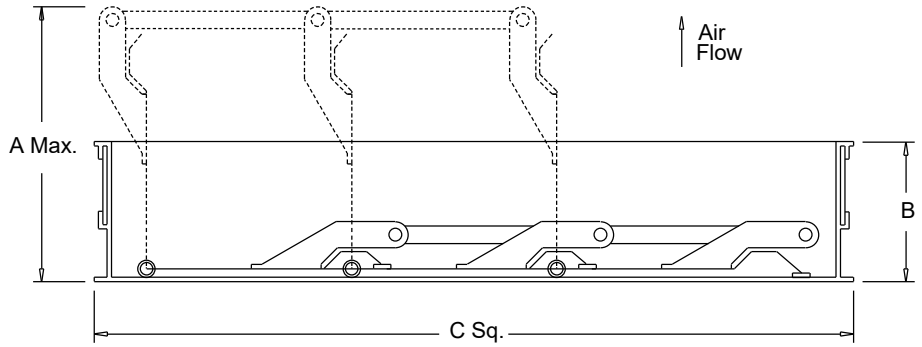
Max. operating temperature 200 Deg F (95 Deg C).

Max. discharge velocity 2000 fpm.

Sizes 36 thru 60 are shipped as 2 panels.

Sizes 66 and 78 are shipped as 6 panels.

These may require assembly.



#### Dimensions (inches)

Mark	Qty	Description	A Max.	B	C Sq.	# Panels
REF 01	1	BD-18 DAMPER	5-3/16	1-7/8	17-3/4	1