



SUBMITTAL COVER SHEET

PROJECT

Cincinnati Classical Academy

ENGINEER

Cunning and Associates

ARCHITECT

Silverpeak Engineering

SPECIFICATIONS NO.

ITEM

VAV-VAVR

Submittal #: 006.1

- Approved
 Disapproved

Date: 1/17/2025

Submitted by: David Day

Proudly Serving Dayton, Cincinnati & Columbus Ohio

Headquarters
4401 Springfield Street
Dayton, OH. 45341

800.254.9455
www.msding.net
OH 24297 KY HM00345

Cincinnati Office
2866 E. Kemper Road
Cincinnati, OH. 45241

Titus VAV-VAVR

Submittal Data

DATE: 01/16/2025

JOB: Cincinnati Classical
Academy

SUBMITTED BY: Controlled Air, Inc.
Greg Stanaford
12009 Tramway Drive
Cincinnati, OH 45241

CONTRACTOR: MSD
Cole Kendig

VAV - COOLING ONLY

Single Duct Terminal Unit Schedule

Tag		Model	Size		CFM		Static Pressure			NC Levels		Electric Heat Coil						Electrical		Unit Information
			Unit	Outlet	Max	Min	Inlet	Down	Min	Rad.	Disch.	CFM	KW	Volts/Ph.	Steps	EAT	LAT	MCA	MOP	Hand
VAV-103	RTU-E	DESV	10	14x12.5	980	410	1	0.25	0.01	25	28	0		/		0	0	0.0	0	RH
VAV-123	RTU-A	DESV	10	14x12.5	1195	410	1	0.25	0.01	27	31	0		/		0	0	0.0	0	RH
VAV-126	RTU-A	DESV	10	14x12.5	1100	410	1	0.25	0.01	25	29	0		/		0	0	0.0	0	RH
VAV-128	RTU-E	DESV	06	12x8	470	145	1	0.25	0.18	28	28	0		/		0	0	0.0	0	RH
VAV-130	RTU-E	DESV	06	12x8	300	145	1	0.25	0.07	20	23	0		/		0	0	0.0	0	RH
VAV-131	RTU-E	DESV	10	14x12.5	1000	410	1	0.25	0.01	25	28	0		/		0	0	0.0	0	RH
VAV-138	RTU-A	DESV	06	12x8	350	145	1	0.25	0.1	22	24	0		/		0	0	0.0	0	RH
VAV-200	RTU-E	DESV	06	12x8	500	145	1	0.25	0.2	28	29	0		/		0	0	0.0	0	RH
VAV-201	RTU-E	DESV	10	14x12.5	1000	410	1	0.25	0.01	25	28	0		/		0	0	0.0	0	RH
VAV-215	RTU-A	DESV	10	14x12.5	1000	410	1	0.25	0.01	25	28	0		/		0	0	0.0	0	RH
VAV-217	RTU-A	DESV	10	14x12.5	1030	410	1	0.25	0.01	25	29	0		/		0	0	0.0	0	RH
VAV-219	RTU-A	DESV	08	12x10	650	175	1	0.25	0.02	24	29	0		/		0	0	0.0	0	RH
VAV-228	RTU-E	DESV	08	12x10	750	175	1	0.25	0.02	25	28	0		/		0	0	0.0	0	RH
VAV-236	RTU-A	DESV	08	12x10	750	175	1	0.25	0.02	25	28	0		/		0	0	0.0	0	RH
VAV-238	RTU-A	DESV	08	12x10	750	175	1	0.25	0.02	25	28	0		/		0	0	0.0	0	RH
VAV-239	RTU-E	DESV	08	12x10	750	175	1	0.25	0.02	25	28	0		/		0	0	0.0	0	RH
VAV-240	RTU-E	DESV	08	12x10	750	175	1	0.25	0.02	25	28	0		/		0	0	0.0	0	RH

- Notes:
1. Selections are based on Titus as Manufacturer.
 2. All performance based on tests conducted in accordance with ASHRAE 130-2008 and AHRI 880-2011.
 3. All NC levels determined using AHRI 885-2008 Appendix E.
 4. All airflow, pressure losses and heating performance values have been corrected for altitude.
 5. Units of measure: dimensions (in), airflow (cfm), water flow (gpm), air pressure (in wg), water head losses (ft) and temperatures
 6. In the "Steps" column, code "S" denotes a modulating SCR heater.
 7. The minimum supply circuit ampacity (MCA) and maximum overcurrent protection (MOP) ratings were calculated in accordance

SUBMITTAL REVIEW

Submission of information by the Contractor is taken as evidence that the Contractor has prepared the information for the specific application, and has verified that adequate and complete conditions for installation and subsequent operation and maintenance will exist.

Engineers review is for general conformance with the design concepts of the project, and for general compliance with the information given in the contract documents. The Contractor is responsible for access and clearance code compliance, work methods and conditions, coordination of trades, safety, all in satisfactory performance of work.

- NO EXCEPTIONS TAKEN REJECTED-RESUBMIT
 EXCEPTIONS AS NOTED REVISE AND RESUBMIT

CUNNING & ASSOCIATES MCE

Date: Jan 21 2025

By: Norm Cunning

Single Duct Terminal Unit Schedule

VAV - REHEAT

Tag		Model	Size		CFM		Static Pressure			NC Levels		Hot Water Heat Coil										Unit Information	
			Unit	Outlet	Max	Min	Inlet	Down	Min	Rad	Dis	CFM	MBH	EAT	EWT	LAT	APd	GPM	LWT	WPd	Rows	FPI	Hand
VAVR-100	RTU-E	DESV	06	12x8	500	100	1	0.25	0.48	24	25	215	11.7	55	180	105.1	0.28	0.9	153.3	0.13	2-RH	10	RH
VAVR-107	RTU-E	DESV	10	14x12.5	1200	280	1	0.25	0.4	24	29	425	25.4	55	180	110.2	0.39	2.4	158.2	0.38	2-RH	10	RH
VAVR-108	RTU-E	DESV	10	14x12.5	1200	280	1	0.25	0.4	24	29	425	25.4	55	180	110.2	0.39	2.4	158.2	0.38	2-RH	10	RH
VAVR-109	RTU-E	DESV	08	12x10	800	160	1	0.25	0.4	24	27	300	17.6	55	180	109.2	0.37	1.6	157.4	0.38	2-RH	10	RH
VAVR-110	RTU-E	DESV	10	14x12.5	1000	280	1	0.25	0.3	22	27	380	23.2	55	180	111.3	0.29	2	156.2	0.27	2-RH	10	RH
VAVR-111	RTU-E	DESV	10	14x12.5	1000	280	1	0.25	0.3	22	27	380	23.2	55	180	111.3	0.29	2	156.2	0.27	2-RH	10	RH
VAVR-112	RTU-E	DESV	10	14x12.5	1000	280	1	0.25	0.3	22	27	380	23.2	55	180	111.3	0.29	2	156.2	0.27	2-RH	10	RH
VAVR-113	RTU-A	DESV	10	14x12.5	1000	280	1	0.25	0.3	22	27	380	23.2	55	180	111.3	0.29	2	156.2	0.27	2-RH	10	RH
VAVR-114	RTU-A	DESV	10	14x12.5	1000	280	1	0.25	0.3	22	27	380	23.2	55	180	111.3	0.29	2	156.2	0.27	2-RH	10	RH
VAVR-115	RTU-A	DESV	10	14x12.5	1000	280	1	0.25	0.3	22	27	380	23.2	55	180	111.3	0.29	2	156.2	0.27	2-RH	10	RH
VAVR-116	RTU-A	DESV	08	12x10	900	160	1	0.25	0.48	25	27	265	17	55	180	114.2	0.45	2	162.5	0.57	2-RH	10	RH
VAVR-119	RTU-A	DESV	08	12x10	700	160	1	0.25	0.32	22	28	245	15.8	55	180	114.4	0.3	1.6	159.7	0.38	2-RH	10	RH
VAVR-120	RTU-A	DESV	06	12x8	500	100	1	0.25	0.48	24	25	215	11.7	55	180	105.1	0.28	0.9	153.3	0.13	2-RH	10	RH
VAVR-200	RTU-A	DESV	06	12x8	450	100	1	0.25	0.39	23	25	215	11.7	55	180	105.1	0.23	0.9	153.3	0.13	2-RH	10	RH
VAVR-202	RTU-E	DESV	10	14x12.5	1400	280	1	0.25	0.51	25	31	425	25.8	55	180	110.9	0.5	2.6	159.7	0.44	2-RH	10	RH
VAVR-203	RTU-E	DESV	10	14x12.5	1400	280	1	0.25	0.51	25	31	425	25.8	55	180	110.9	0.5	2.6	159.7	0.44	2-RH	10	RH
VAVR-204	RTU-E	DESV	08	12x10	900	160	1	0.25	0.48	25	27	265	16.5	55	180	112.4	0.45	1.6	158.8	0.38	2-RH	10	RH
VAVR-205	RTU-E	DESV	10	14x12.5	1200	160	1	0.25	0.4	24	29	425	25.4	55	180	110.2	0.39	2.4	158.2	0.38	2-RH	10	RH
VAVR-206	RTU-E	DESV	10	14x12.5	1200	280	1	0.25	0.4	24	29	425	25.4	55	180	110.2	0.39	2.4	158.2	0.38	2-RH	10	RH
VAVR-207	RTU-E	DESV	10	14x12.5	1200	280	1	0.25	0.4	24	29	425	25.4	55	180	110.2	0.39	2.4	158.2	0.38	2-RH	10	RH
VAVR-208	RTU-A	DESV	10	14x12.5	1200	280	1	0.25	0.4	24	29	425	25.4	55	180	110.2	0.39	2.4	158.2	0.38	2-RH	10	RH
VAVR-209	RTU-A	DESV	10	14x12.5	1200	280	1	0.25	0.4	24	29	425	25.4	55	180	110.2	0.39	2.4	158.2	0.38	2-RH	10	RH
VAVR-210	RTU-A	DESV	10	14x12.5	1200	280	1	0.25	0.4	24	29	425	25.4	55	180	110.2	0.39	2.4	158.2	0.38	2-RH	10	RH
VAVR-211	RTU-A	DESV	10	14x12.5	1000	280	1	0.25	0.3	22	27	425	24.8	55	180	108.9	0.29	2.1	155.7	0.3	2-RH	10	RH
VAVR-213	RTU-A	DESV	08	12x10	750	160	1	0.25	0.36	23	25	265	16.5	55	180	112.4	0.34	1.6	158.8	0.38	2-RH	10	RH

- Notes:
1. Selections are based on Titus as Manufacturer.
 2. All performance based on tests conducted in accordance with ASHRAE 130-2008 and AHRI 880-2011.
 3. All NC levels determined using AHRI 885-2008 Appendix E.
 4. All airflow, pressure losses and heating performance values have been corrected for altitude.
 5. Units of measure: dimensions (in), airflow (cfm), water flow (gpm), air pressure (in wg), water head losses (ft) and temperatures
 6. Water pressure drop (WPd) units is in ft. water.

SUBMITTAL REVIEW

Submission of information by the Contractor is taken as evidence that the Contractor has prepared the information for the specific application, and has verified that adequate and complete conditions for installation and subsequent operation and maintenance will exist. Engineers review is for general conformance with the design concepts of the project, and for general compliance with the information given in the contract documents. The Contractor is responsible for access and clearance code compliance, work methods and conditions, coordination of trades, safety, all in satisfactory performance of work.

- NO EXCEPTIONS TAKEN REJECTED-RESUBMIT
 EXCEPTIONS AS NOTED REVISE AND RESUBMIT

CUNNING & ASSOCIATES MCE

Date: Jan 21 2025

By: Norm Cunning

SINGLE DUCT

Model: DESV

SENSOR CODE:	3 - AEROCROSS	CONTROL ACC2:	00 -NONE	WATER COIL:	000 -NONE
UNIT CONFIG:	0 -BASIC	CONTROL ACC3:	00 -NONE	ELECTRIC HEAT TYPE:	000 -NONE
LINER OPTION:	K - 1" EcoShield (Matte)	UNIT ACC1:	E -METAL CTRL ENCLOS	KW:	0
CASING CONFIG:	0R -STD 22GA RH	UNIT ACC2:	0 -NONE	ELEC COIL ACC1:	0 -NONE
DIGITAL	0000 -NONE	UNIT ACC3:	0 -NONE	ELEC COIL ACC2:	0 -NONE
CONTROLLER:					
ACTUATOR TYPE:	0000 -NONE	UNIT ACC4:	0 -NONE	ELEC COIL ACC3:	0 -NONE
CONTROL ACC1:	00 -NONE	UNIT ACC5:	0 -NONE	ELEC COIL ACC4:	0 -NONE

Qty	UNIT SIZE	MAX PRIMARY CFM	MIN PRIMARY CFM
1	10 VAV-103	980	410
1	10 VAV-123	1195	410
1	10 VAV-126	1100	410
1	06 VAV-128	470	145
1	06 VAV-130	300	145
1	10 VAV-131	1000	410
1	06 VAV-138	350	145
1	06 VAV-200	500	145
1	10 VAV-201	1000	410
1	10 VAV-215	1000	410
1	10 VAV-217	1030	410
1	08 VAV-219	650	175
1	08 VAV-228	750	175
1	08 VAV-236	750	175
1	08 VAV-238	750	175
1	08 VAV-239	750	175
1	08 VAV-240	750	175

Model: DESV

SENSOR CODE:	3 - AEROCROSS	CONTROL ACC2:	00 -NONE	WATER COIL:	W12 -2 ROW RH
UNIT CONFIG:	0 -BASIC	CONTROL ACC3:	00 -NONE	ELECTRIC HEAT	000 -NONE
				TYPE:	
LINER OPTION:	K - 1" EcoShield (Matte)	UNIT ACC1:	E -METAL CTRL ENCLOS	KW:	0
CASING CONFIG:	0R -STD 22GA RH	UNIT ACC2:	0 -NONE	ELEC COIL ACC1:	0 -NONE
DIGITAL	0000 -NONE	UNIT ACC3:	0 -NONE	ELEC COIL ACC2:	0 -NONE
CONTROLLER:					
ACTUATOR TYPE:	0000 -NONE	UNIT ACC4:	0 -NONE	ELEC COIL ACC3:	0 -NONE
CONTROL ACC1:	00 -NONE	UNIT ACC5:	0 -NONE	ELEC COIL ACC4:	0 -NONE

Qty	UNIT SIZE	MAX PRIMARY CFM	MIN PRIMARY CFM
1	06 VAVR-100	500	100
1	10 VAVR-107	1200	280
1	10 VAVR-108	1200	280
1	08 VAVR-109	800	160
1	10 VAVR-110	1000	280
1	09 VAVR-111	1000	280
1	10 VAVR-112	1000	280
1	09 VAVR-113	1000	280
1	10 VAVR-114	1000	280
1	10 VAVR-115	1000	280
1	08 VAVR-116	900	160
1	08 VAVR-119	700	160
1	06 VAVR-120	500	100
1	06 VAVR-200	450	100
1	10 VAVR-202	1400	280
1	10 VAVR-203	1400	280
1	08 VAVR-204	900	160
1	10 VAVR-205	1200	160
1	10 VAVR-206	1200	280
1	10 VAVR-207	1200	280

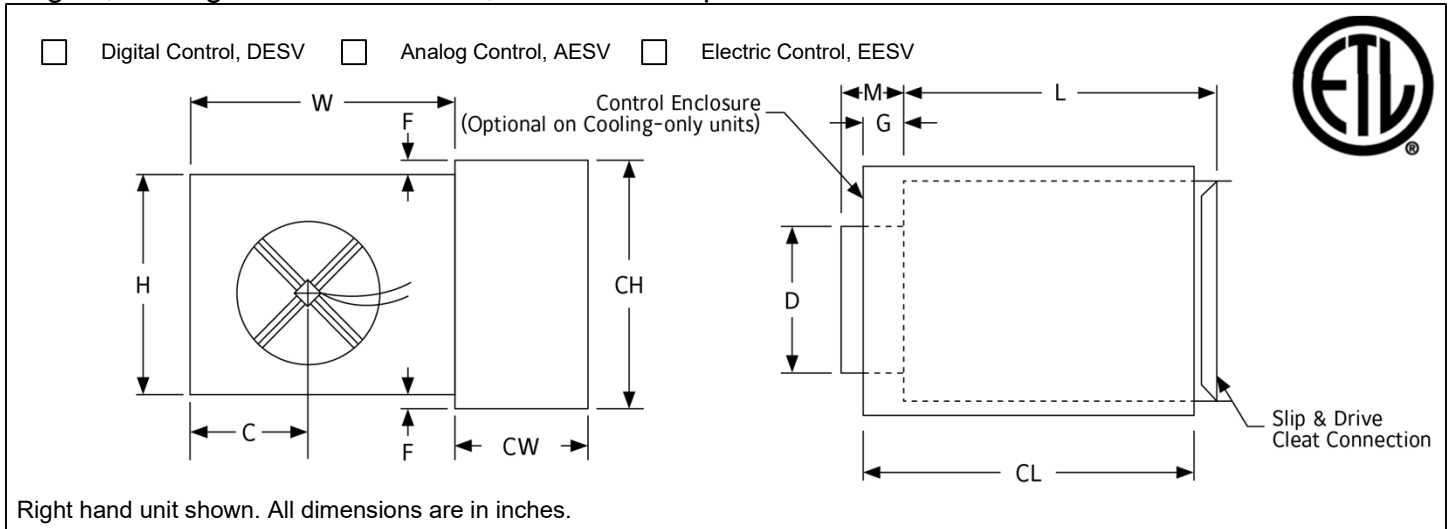
Job Name: Cincinnati Classical Academy

1	10	1200	280
	VAVR-208		
1	10	1200	280
	VAVR-209		
1	10	1200	280
	VAVR-210		
1	09	1000	280
	VAVR-211		
1	08	750	160
	VAVR-213		

ESV

Single Duct Terminal Unit

Digital, Analog or Electric Control, Pressure Independent



Size	CFM Range	D (H x W)	C	F	G	H	L	M	W	CH	CL	CW
4	0-225	3 ⁷ / ₈	6 ¹ / ₂	2 ¹ / ₈	7 ³ / ₈	8	15 ¹ / ₂	5 ³ / ₈	12	12 ¹ / ₄	18	6 ¹ / ₂
5	0-350	4 ⁷ / ₈	6 ¹ / ₂	2 ¹ / ₈	7 ³ / ₈	8	15 ¹ / ₂	5 ³ / ₈	12	12 ¹ / ₄	18	6 ¹ / ₂
6	0-500	5 ⁷ / ₈	6 ¹ / ₂	2 ¹ / ₈	7 ³ / ₈	8	15 ¹ / ₂	3 ³ / ₈	12	12 ¹ / ₄	18	6 ¹ / ₂
7	0-650	6 ⁷ / ₈	6	1 ¹ / ₈	7 ³ / ₈	10	15 ¹ / ₂	3 ³ / ₈	12	12 ¹ / ₄	18	6 ¹ / ₂
8	0-900	7 ⁷ / ₈	6	1 ¹ / ₈	7 ³ / ₈	10	15 ¹ / ₂	3 ³ / ₈	12	12 ¹ / ₄	18	6 ¹ / ₂
9	0-1050	8 ⁷ / ₈	7	-	5 ³ / ₈	12 ¹ / ₂	15 ¹ / ₂	3 ³ / ₈	14	12 ¹ / ₄	18	6 ¹ / ₂
10	0-1400	9 ⁷ / ₈	7	-	5 ³ / ₈	12 ¹ / ₂	15 ¹ / ₂	3 ³ / ₈	14	12 ¹ / ₄	18	6 ¹ / ₂
12	0-2000	11 ⁷ / ₈	8	-	5 ³ / ₈	15	15 ¹ / ₂	3 ³ / ₈	16	12 ¹ / ₄	18	6 ¹ / ₂
14	0-3000	13 ⁷ / ₈	10 ¹ / ₂	-	3 ³ / ₈	17 ¹ / ₂	15 ¹ / ₂	3 ³ / ₈	20	12 ¹ / ₄	18	6 ¹ / ₂
16	0-4000	15 ⁷ / ₈	13 ¹ / ₂	-	3 ³ / ₈	18	15 ¹ / ₂	3 ³ / ₈	24	12 ¹ / ₄	18	6 ¹ / ₂
20	0-2000	7 ¹ / ₂ x 12 ¹ / ₄	8	1 ¹ / ₄	3	10	15 ¹ / ₂	3 ³ / ₈	16	10 ¹ / ₄	15 ¹ / ₄	6 ¹ / ₂
30	0-4000	7 ¹ / ₂ x 23 ³ / ₄	13 ⁵ / ₈	1 ¹ / ₄	3	10	15 ¹ / ₂	3 ³ / ₈	27 ¹ / ₄	10 ¹ / ₄	15 ¹ / ₄	6 ¹ / ₂
40	0-8000	15 ⁷ / ₈ x 23 ⁷ / ₈	19	1 ¹ / ₈	5 ³ / ₈	18	15	3 ³ / ₈	38	12 ¹ / ₄	18	6 ¹ / ₂
5E	0-350	4 ⁷ / ₈	6	2 ¹ / ₈	7 ³ / ₈	10	15 ¹ / ₂	3 ³ / ₈	12	12 ¹ / ₄	18	6 ¹ / ₂
6E	0-500	5 ⁷ / ₈	6	2 ¹ / ₈	7 ³ / ₈	10	15 ¹ / ₂	3 ³ / ₈	12	12 ¹ / ₄	18	6 ¹ / ₂
7E	0-650	6 ⁷ / ₈	7	1 ¹ / ₈	5 ³ / ₈	12 ¹ / ₂	15 ¹ / ₂	3 ³ / ₈	14	12 ¹ / ₄	18	6 ¹ / ₂
8E	0-900	7 ⁷ / ₈	7	1 ¹ / ₈	5 ³ / ₈	12 ¹ / ₂	15 ¹ / ₂	3 ³ / ₈	14	12 ¹ / ₄	18	6 ¹ / ₂
1E	0-1400	9 ⁷ / ₈	8	-	5 ³ / ₈	15	15 ¹ / ₂	3 ³ / ₈	16	12 ¹ / ₄	18	6 ¹ / ₂
2E	0-2000	11 ⁷ / ₈	10	-	3 ³ / ₈	17 ¹ / ₂	15 ¹ / ₂	3 ³ / ₈	20	12 ¹ / ₄	18	6 ¹ / ₂
4E	0-3000	13 ⁷ / ₈	12	-	3 ³ / ₈	18	15 ¹ / ₂	3 ³ / ₈	24	12 ¹ / ₄	18	6 ¹ / ₂

This submittal is meant to demonstrate general dimensions of this product. The drawings are not meant to detail every aspect of the product. Drawings are

not to scale. Titus reserves the right to make changes without written notice.

All rights reserved. No part of this work may be reproduced or transmitted in any form or by any means, electronic or mechanical, including photocopying and recording, or by any information storage retrieval system without permission in writing from Air Distribution Technologies, Inc.

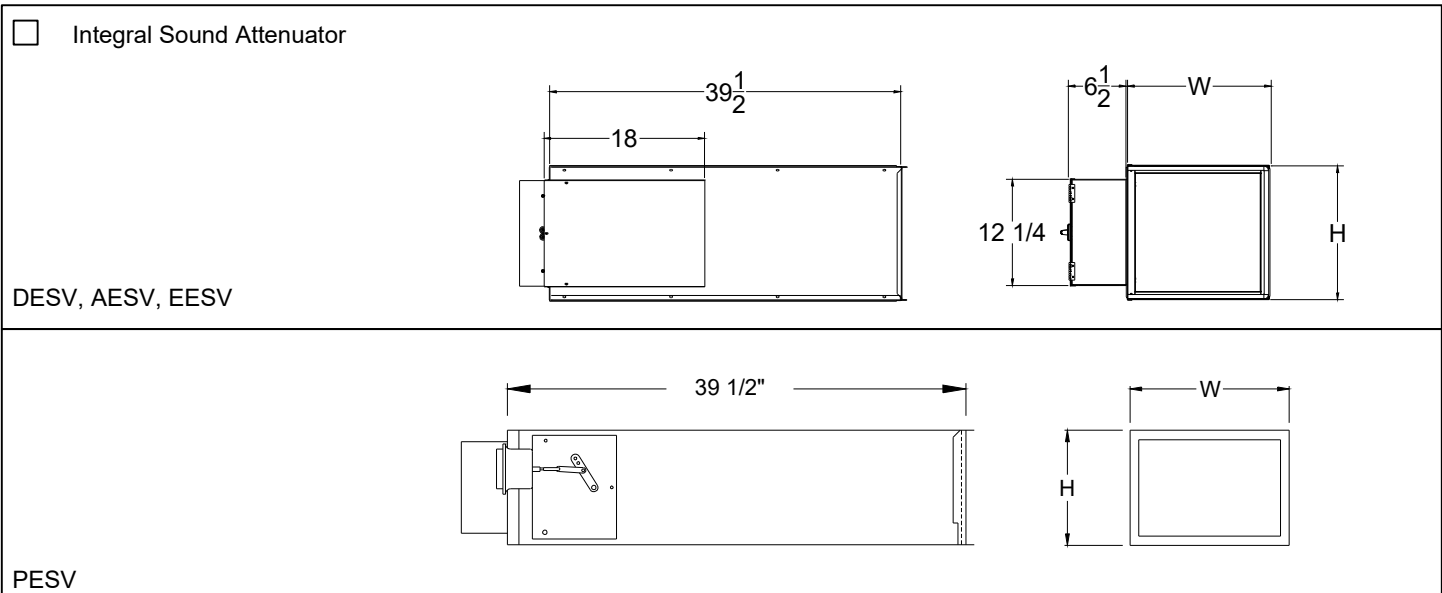
General Description

- Heavy gauge G40 galvanized steel housing. Mechanically sealed and gasketed, leak resistant construction. Less than 2% of nominal cfm at 1.5" sp wg.
- Dual density internal insulation, treated to resist air erosion.
- Meets requirements of NFPA 90A and UL 181.
- Units equipped with the Titus II velocity controller can either be direct acting or reverse acting, with the damper either normally open or normally closed. Controller maintains constant span and start point. (Span and start point are adjustable.)
- Rectangular discharge opening is designed for slip and drive cleat duct connection.
- Multipoint center averaging inlet velocity sensor.
- Control packages can be factory mounted by Titus.
- Choice of right hand or left hand control location.
- Units equipped with the Titus I velocity controller are available in both direct acting / normally open and reverse acting / normally closed operating modes.
- Model DESV without coils can be installed horizontally, vertically, or at any angle. Operation is not affected by position. For units with coils, consult technical support.
- Gauge tees for cfm measurement.
- OSHPD Seismic Certification: OSP-0352-10
- Only Titus Alpha digital and pneumatic controls approved for seismic installation.

Accessories (Optional)

Check if provided.

- | | | | |
|----------------------------------------------------|--------------------------------------------------------|-----------------------------------------------------------|----------------------------------------------------------------|
| <input type="checkbox"/> 24 V Control Transformer | <input type="checkbox"/> 1" Fiberglass Liner | <input type="checkbox"/> UltraLoc Liner | <input type="checkbox"/> Removable Air Flow Sensor |
| <input type="checkbox"/> Dust Tight Enclosure Seal | <input type="checkbox"/> 1" EcoShield Liner | <input type="checkbox"/> 1/2" EcoShield Liner (Foil Face) | <input type="checkbox"/> Bottom Access Door |
| <input type="checkbox"/> Fibre Free Liner | <input type="checkbox"/> 1" Fibre Free Liner | <input type="checkbox"/> 1" EcoShield Liner (Foil Face) | <input type="checkbox"/> OSP & IBC -S Seismic Certification |
| <input type="checkbox"/> 1/2" EcoShield Liner | <input type="checkbox"/> Low Leakage Seal/Test/Certify | <input type="checkbox"/> Disconnect Switch | <input type="checkbox"/> Red List Compliant "Google" Gasketing |
| <input type="checkbox"/> 1/2" Fibre Free Liner | <input type="checkbox"/> SteriLoc Liner | <input type="checkbox"/> Hanger Brackets | <input type="checkbox"/> Stainless Steel Construction |
| | | | <input type="checkbox"/> _____ |



This submittal is meant to demonstrate general dimensions of this product. The drawings are not meant to detail every aspect of the product. Drawings are not to scale. Titus reserves the right to make changes without written notice.

All rights reserved. No part of this work may be reproduced or transmitted in any form or by any means, electronic or mechanical, including photocopying and recording, or by any information storage retrieval system without permission in writing from Air Distribution Technologies, Inc.

Accessories (Optional)

Hot Water Coil Section

- Aluminum ripple fins, 10 per inch
- Coil pipe connections are male, sweat, type "L" copper.
- Connection sizes: Unit sizes 04-08: 1/2" OD on 1 row coils and 5/8" OD on 2 row coils. Unit sizes 09-40: 7/8" OD for all coils
- Coil is installed at discharge of unit.
- On units with attenuators, coil are installed at the discharge of attenuator.
- Coils rated and certified to AHRI Standard 410

1 Row
 2 Row
 3 Row
 4 Row

Electric Coil Section
 Optional SCR Controlled Electric Heater
 Optional Lynergy Controlled Electric Heater

Standard Features

- Single side access to low voltage, high voltage, and electric heater controls.
- Automatic reset thermal cutouts, one per element
- Manual reset secondary protection.
- Positive pressure flow switch
- Magnetic contactor for each step.
- Slip and drive cleat discharge duct connection.

Options

- Fuse Block
- Disconnect switch, door interlock type
- Dust tight construction
- Mercury contactors

Supply Voltage

- 120V, 1 ph, 60Hz
- 208V, 1 ph, 60Hz
- 240V, 1 ph, 60Hz
- 277V, 1 ph, 60Hz
- 208V, 3 ph, 60Hz
- 480V, 3 ph, 60Hz (4 wire wye standard)

DES, AESV, EESV

PESV

Size	H	W	Water Coil	
			L (1-2 Row)	L (3-4 Row)
4	8	12	5	7 1/4
5	8	12	5	7 1/4
6	8	12	5	7 1/4
7	10	12	5	7 1/4
8	10	12	5	7 1/4
9	12 1/2	14	5	7 1/4
10	12 1/2	14	5	7 1/4
12	15	16	5	7 1/4
14	17 1/2	20	7 1/2	9 3/4
16	18	24	7 1/2	9 3/4
20	10	16	5	7 1/4
30	10	27 1/4	5	7 1/4
40	18	38	5	7 1/4

The total length of the ESV unit is the summation of the unit length (with or without attenuator) and the length of the optional water coil.

This submittal is meant to demonstrate general dimensions of this product. The drawings are not meant to detail every aspect of the product. Drawings are not to scale. Titus reserves the right to make changes without written notice.

All rights reserved. No part of this work may be reproduced or transmitted in any form or by any means, electronic or mechanical, including photocopying and recording, or by any information storage retrieval system without permission in writing from Air Distribution Technologies, Inc.

Job Name: Cincinnati Classical Academy

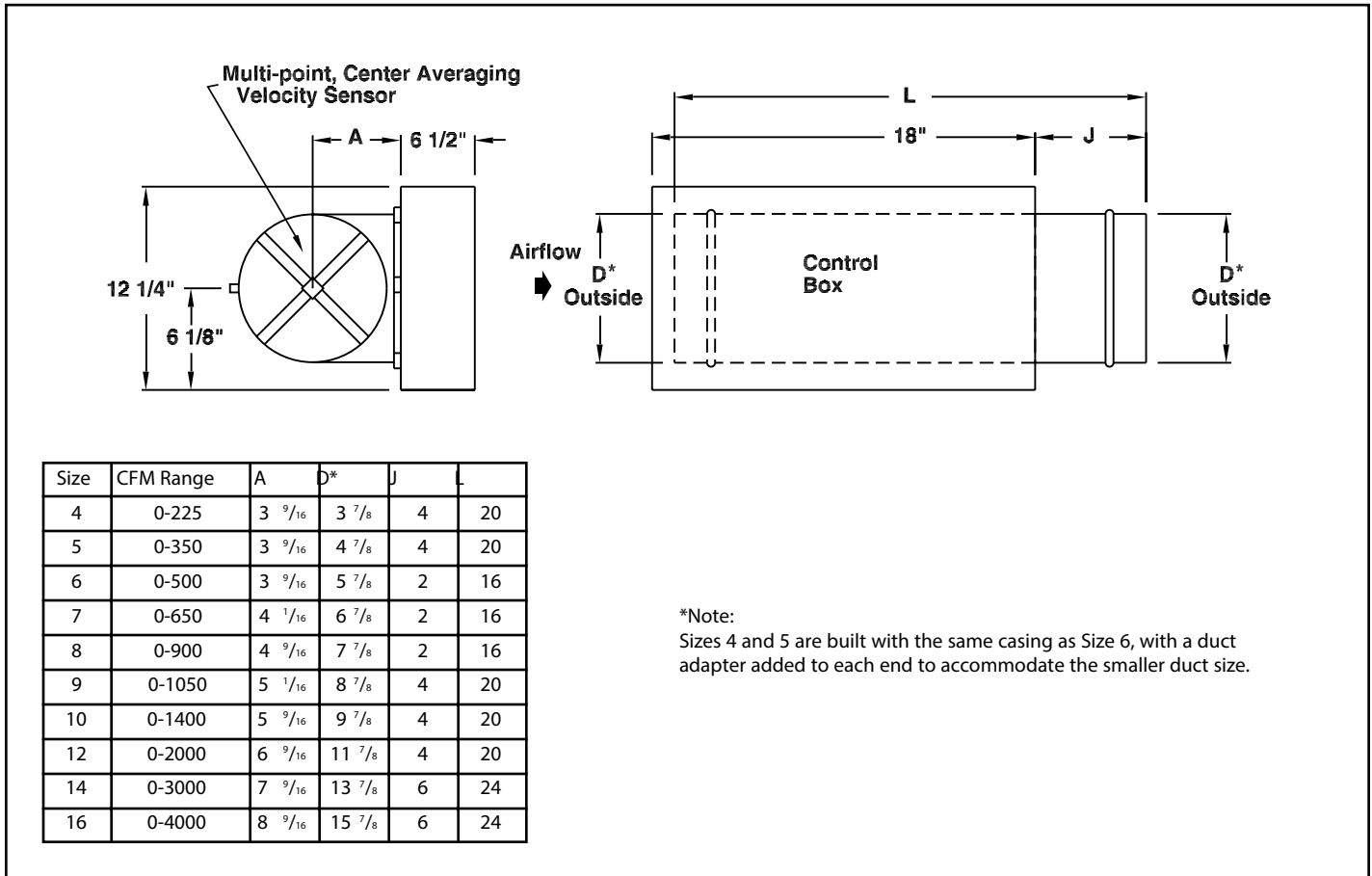
RETROFIT

Model: DECV

SENSOR CODE:	3 - AEROCROSS	ACTUATOR TYPE:	0000 -NONE	UNIT ACC2:	0 -NONE
UNIT CONFIG:	0 -BASIC	CONTROL ACC1:	00 -NONE	UNIT ACC3:	0 -NONE
LINER OPTION:	0 -STANDARD	CONTROL ACC2:	00 -NONE	UNIT ACC4:	0 -NONE
CASING CONFIG:	0R -STD 22GA RH	CONTROL ACC3:	00 -NONE	UNIT ACC5:	0 -NONE
DIGITAL	0000 -NONE	UNIT ACC1:	E -METAL CTRL ENCLOS		
CONTROLLER:					

Qty	UNIT SIZE	MAX PRIMARY CFM	MIN PRIMARY CFM
1	12 ZCD 12"	0	2,000
3	14 ZCD 14"	0	3,000
18	16 ZCD 16"	0	4,000

Digital Control Terminal Units Retrofit • Variable Volume Model: DECV • Pressure Independent Control



Accessories (optional)

- 24 volt control transformer
- Disconnect switch

Check if provided

- Hanger brackets
- Dust tight enclosure seal

TITUS actuator

General Description

- Direct digital control package supplied by TITUS includes direct digital controller, damper actuator and flow transducer (all tested and calibrated.) Room sensor is optional.
- Direct digital control packages can be factory mounted by TITUS from various manufacturers. Consult your TITUS representative for specific availability.

- Tight close-off damper. Leakage is less than 2% of nominal cfm at 6" sp W.G.
- Multi-point inlet velocity sensor with center averaging.
- Gauge tees for cfm measurement.
- Choice of right or left hand control location. (Right hand is shown above.)

- Inlet and discharge connections fit inside standard round duct.
- Heavy gauge steel casing, uninsulated.