

| ROOF DRAIN PIPING CALCLS | | | | |
|--------------------------|---------------|---------------|----------|----------------------|
| ROOF LOCATION | ROOF AREA | RAINFALL RATE | ROOF GPM | ROOF DRAIN PIPE SIZE |
| AREA 1-4 | 2,735 SQ. FT. | 2.9" / HR. | 41 GPM | 4" (TO LOWER ROOF) |
| AREA 5 | 1,485 SQ. FT. | 2.9" / HR. | 45 GPM | 3" |
| AREA 6 | 2,340 SQ. FT. | 2.9" / HR. | 71 GPM | |
| | | | + 41 GPM | |
| | | | 112 GPM | 5" |
| AREA 7 | 2,340 SQ. FT. | 2.9" / HR. | 45 GPM | |
| | | | + 71 GPM | |
| | | | 112 GPM | 5" |
| AREA 8 | 2,690 SQ. FT. | 2.9" / HR. | 82 GPM | 4" |
| AREA 9 | 2,690 SQ. FT. | 2.9" / HR. | 82 GPM | 4" |
| AREA 10 | 1,610 SQ. FT. | 2.9" / HR. | 49 GPM | |
| | | | + 41 GPM | |
| | | | 90 GPM | 4" |
| AREA 11 | 1,465 SQ. FT. | 2.9" / HR. | 45 GPM | 3" |
| AREA 12 | 2,260 SQ. FT. | 2.9" / HR. | 69 GPM | |
| | | | + 41 GPM | |
| | | | 110 GPM | 5" |

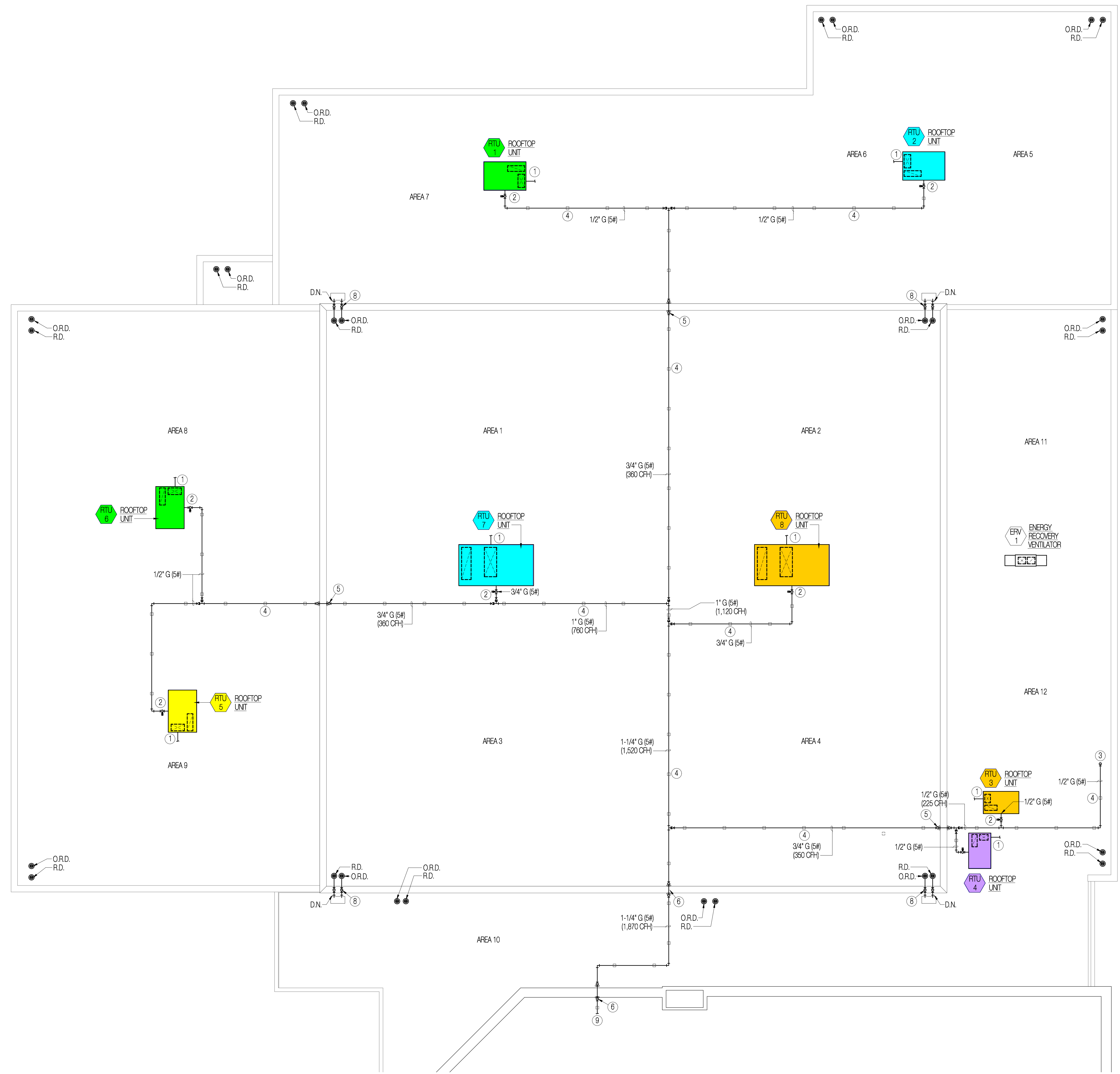
-sizing based on table 1101.8 of the 2021 international plumbing code (2024 ohio plumbing code)
 slope all roof drain piping a minimum of 1/8" per 1'-0" (1% slope)

DRAWING NOTES

- LINE SIZE PVC CONDENSATE DRAIN PIPING, EXTEND TO ROOF SURFACE PER DETAIL 2M-500.
- GAS PIPING CONNECTION TO APPLIANCE, SEE GAS FLOW DIAGRAM SHEET P-600 FOR ADDITIONAL INFORMATION. CONNECT EACH APPLIANCE TO BRANCH WITH 6" DIRT LEG, GAS PRESSURE REGULATOR AND CORRUGATED STAINLESS STEEL TUBE FLEXIBLE CONNECTION.
- 1/2" (5#) GAS PIPING DROP TO WATER HEATER BELOW, SEAL PIPING PENETRATION DROP WATER TIGHT PER DETAIL 10P-000. SEE MAIN FLOOR PLUMBING PLAN SHEET P-101 FOR CONTINUATION.
- MIRO MODEL 3-R-2, OR EQUAL PIPE SUPPORT, TYPICAL OF ALL.
- 3/4" GAS PIPING UP AND OVER ROOF PARAPET TO ROOFTOP UNIT ON HIGHER ROOF. SUPPORT PIPING UP WALL WITH UNISTRUT AS REQUIRED.
- 1-1/4" GAS PIPING UP AND OVER ROOF PARAPET TO ROOFTOP UNITS ON LOWER ROOF. SUPPORT PIPING UP WALL WITH UNISTRUT AS REQUIRED.
- 3" ROOF DRAIN AND OVERFLOW ROOF DRAIN PIPING DROPS IN PARAPET WALL TO 6" ABOVE LOWER ROOF SURFACE. TERMINATE PIPING NEAR LOWER ROOF WITH DOWNSPOUT NOZZLE PER DETAIL 5P-400 AND SPLASH BLOCK.
- 4" ROOF DRAIN AND OVERFLOW ROOF DRAIN PIPING DROPS IN PARAPET WALL TO 6" ABOVE LOWER ROOF SURFACE. TERMINATE PIPING NEAR LOWER ROOF WITH DOWNSPOUT NOZZLE PER DETAIL 5P-400 AND SPLASH BLOCK.
- 1-1/4" (5#) GAS PIPING TO CONNECTION AT MAIN ON ADJACENT BUILDING.

GENERAL NOTES

UTILITY CONNECTION LOCATIONS ARE APPROXIMATE AND ARE BASED ON SCHEDULED EQUIPMENT. PLUMBING AND HVAC CONTRACTORS SHALL FIELD VERIFY FINAL UTILITY CONNECTION LOCATIONS PRIOR TO FABRICATION OF GAS PIPING.



HVAC/PLUMBING ROOF PLAN

SCALE 1/8"=1'-0"

| Revisions | Date |
|------------|----------|
| CONST. SET | 11/15/24 |
| | |
| | |
| | |
| | |

Seal: STATE OF OHIO
 NORMAN SPORNING
 PE 89976
 08/28/24
 REGISTERED PROFESSIONAL ENGINEER

Consultant: Mechanical Consulting Engineers
Cunning & Associates
 605 W. 116th N. Trossard, OH 45237
 Email: norm@cumg.com
 Ph: (614) 226-9461

Project Name
CINCINNATI CLASSICAL ACADEMY
 10200 ANDERSON WAY
 CINCINNATI OH. 45242

| | | | |
|----------------|--------------------------------|------------|----------|
| Project Number | 2424 | Issue Date | 11/15/24 |
| Drawing Title | HVAC PLUMBING ROOF PLAN | | |
| Sheet Number | HP 100 | | |