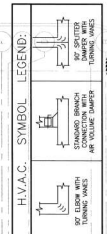




CHARLETTES DESIGN ASSOCIATES, INC.  
 ARCHITECTS



2/14/00	ISSUED FOR BIDDING	APPENDIX NO. 1
9/29/99	MODIFICATION NO. 5	APPENDIX NO. 2
9/29/99	MODIFICATION NO. 6	APPENDIX NO. 3 (REVISED)
1/20/00	MODIFICATION NO. 7	APPENDIX NO. 4

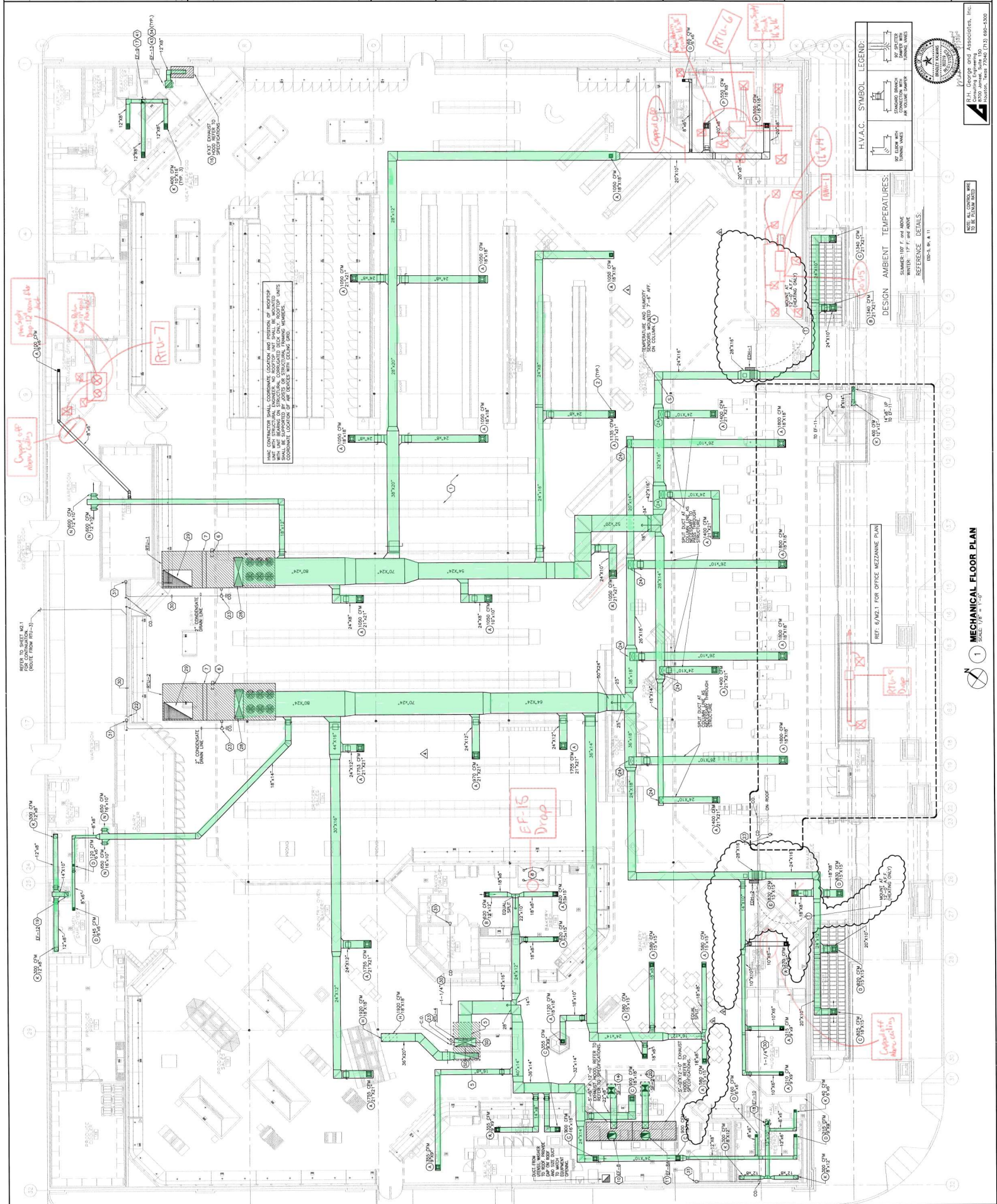


DESIGN AMBIENT TEMPERATURES:  
 CHAMBER TOP F: 48.00C  
 WATER: 17 F (6.11C)  
 REFERENCE DETAILS: 1804, 1805, 1811



NOTE: ALL CONTROL WRT. TO BE TOWER ROOM

MECHANICAL FLOOR PLAN  
 REF: 6/AN-1 FOR OFFICE MEZZANINE PLAN



Capillary tube  
 RTU-7  
 RTU-6

EF-15  
 Drop

Capillary tube  
 RTU-6

REFER TO SHEET M2.1  
 (ROUTE FROM M2.1)



