

\\ucdlink\map\NRY1-RTM Project Directory\RTM Projects\Innomia Design - EB0323\25.EB0323.4006 - Pop Up Bagels - The Gulch - Nashville TN\Project-Construction Documents\25.EB0323.4006-M100-MECHANICAL-FLOOR-PLAN.dwg-RTM - Plot Date/Time: 11/14/2026 11:17:17
 THESE DRAWINGS AND SPECIFICATIONS ARE NOT AUTHORIZED TO BE USED AS CONTRACT DOCUMENTS. THESE DRAWINGS HAVE BEEN PREPARED TO DEMONSTRATE COMPLIANCE WITH APPLICABLE CODES, AND ARE INTENDED TO PROVIDE THE AUTHORITIES HAVING JURISDICTION WITH INFORMATION TO DETERMINE CODE COMPLIANCE. THE INSTALLING CONTRACTOR IS RESPONSIBLE TO ENSURE THAT MEANS, METHODS, AND MATERIALS USED IN CONSTRUCTION ARE INSTALLED IN ACCORDANCE WITH ANY CONTRACTUAL AGREEMENT THAT MAY EXIST WITH AN OWNER, CONSTRUCTION MANAGER, GENERAL CONTRACTOR, ETC. RTM ACCEPTS NO RESPONSIBILITY OR LIABILITY FOR THE COMPLIANCE OR LIABILITY FOR THE COMPLIANCE OF EXISTING EQUIPMENT AND WIRING.

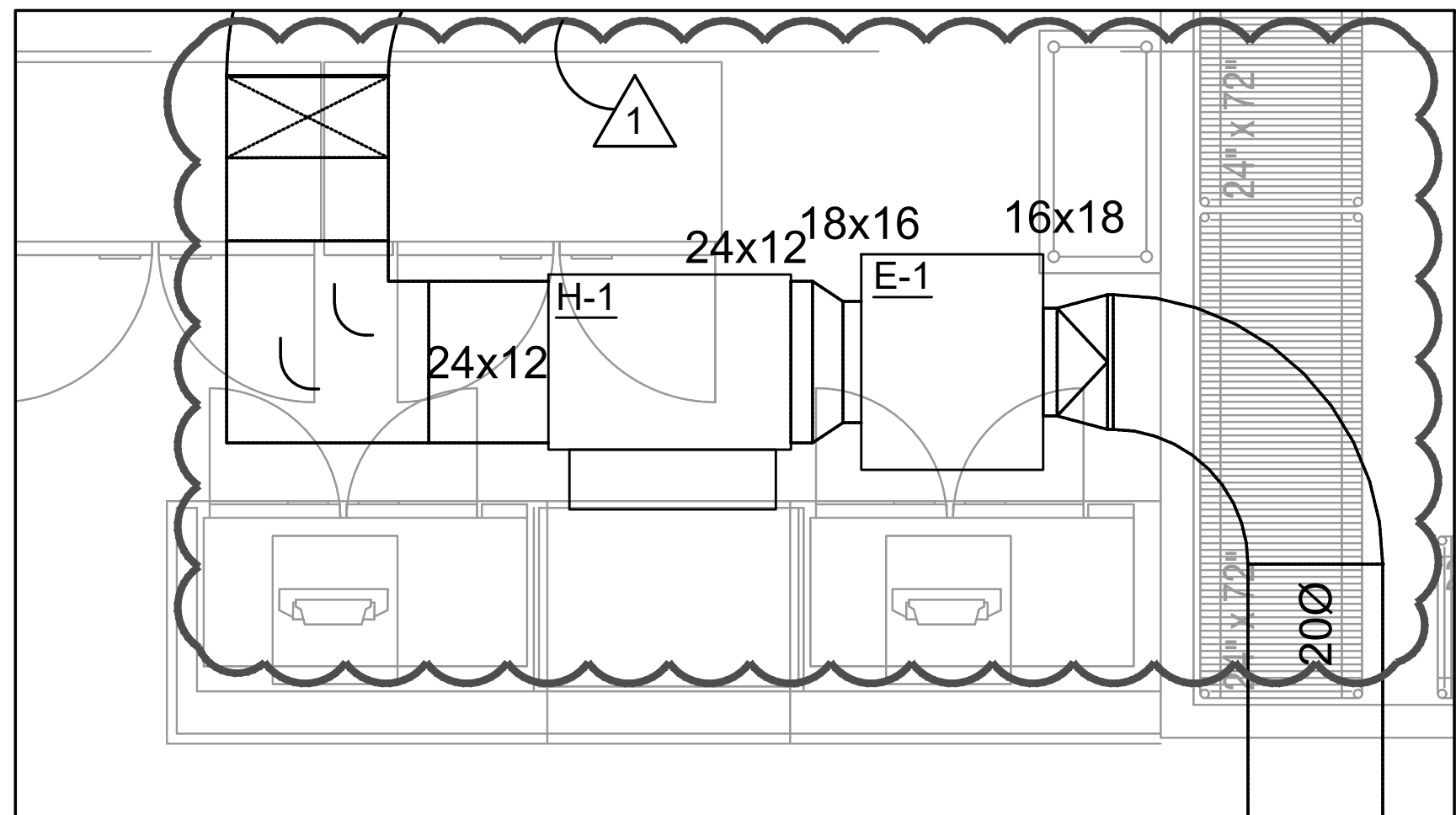
DIFFUSER, GRILLE, AND REGISTER SCHEDULE

CALLOUT	DESCRIPTION	FACE SIZE (IN)	INLET SIZE (IN)	MODEL	NOTES
FRG-1	LONG BLADE 1/2" SPACING, 35 DEGREE DEFLECTION STEEL LOUVERED FILTER RETURN GRILLE	24x12	22x10	TITUS 355RFL1	#26 WHITE FINISH.
FRG-2	LONG BLADE 1/2" SPACING, 35 DEGREE DEFLECTION STEEL LOUVERED FILTER RETURN GRILLE	24x12	22x10	TITUS 355RFL1	#26 WHITE FINISH.
PD 4W-1	4-WAY STEEL PLAQUE FACE DIFFUSER	12x12	6Ø	TITUS OMNI	REMOVABLE CORE FROM FACE OF DIFFUSER. INSULATE BACK OF DIFFUSER.
PD 4W-3	4-WAY STEEL PLAQUE FACE DIFFUSER	24x24	6Ø	TITUS OMNI	REMOVABLE CORE FROM FACE OF DIFFUSER. INSULATE BACK OF DIFFUSER.
PD 4W-5	4-WAY STEEL PLAQUE FACE DIFFUSER	24x24	10Ø	TITUS OMNI	REMOVABLE CORE FROM FACE OF DIFFUSER. INSULATE BACK OF DIFFUSER.
RG-2	EGGCRATE RETURN GRILLE	24x12	22x10	TITUS 50F	#26 WHITE FINISH.
RR-5	STEEL RETURN GRILLE, 3/4" BLADE SPACING, 35 DEGREE DEFLECTION, BLADES PARALLEL TO LONG DIMENSION	24x12	22x10	TITUS 350RL	STEEL OPPOSED-BLADE DAMPER OPERABLE FROM THE FACE OF THE GRILLE.
SDG-2	ALUMINUM SPIRAL DUCT MOUNTED DOUBLE DEFLECTION SUPPLY GRILLE WITH RADIUS END CAP, 3/4" SPACING WITH FRONT BLADES PARALLEL TO THE LONG DIMENSION.	12x6	10x4	TITUS S300FL	AIR SCOOP DAMPER

- NOTES FOR ALL AIR DEVICES:**
- REFER TO ARCHITECTURAL REFLECTED CEILING PLANS FOR MOUNTING TYPE
 - DUCT RUN-OUT SAME SIZE AS NECK UNLESS NOTED OTHERWISE
 - PLASTER FRAME WHERE LOCATED IN GYPSUM CEILING
 - PAINT DUCTWORK THAT IS VISIBLE BEHIND AIR DEVICES MATTE BLACK
 - AIR DEVICES SHALL BE ALUMINUM IN HIGH MOISTURE AREAS. (RESTROOMS)
 - DO NOT CONNECT AIR DEVICE DIRECTLY TO DUCT. PROVIDE FULL SIZE TAKE-OFF WITH BALANCING DAMPER AND 45 DEGREE FLARED OUT CONNECTION TO MAIN OR BRANCH DUCT.
 - WHERE AIR DEVICES ARE LOCATED IN A FIRE RATED ASSEMBLY, PROVIDE CEILING RADIATION DAMPERS, FIRE DAMPER, FIRE RATED INSULATION, AS REQUIRED PER CODE.
 - WHERE DAMPER IN DUCTWORK IS NOT ACCESSIBLE, PROVIDE METROPOLITAN AIR TRANSFER (MAT) MODEL RT-150 SERIES CABLE ACTUATED DAMPER DRIVE SYSTEM, OR APPROVED EQUAL.
 - PROVIDE SAMPLE AIR DEVICES STYLE AND COLOR, FOR OWNER'S REPRESENTATIVE APPROVAL, BEFORE ORDERING FINAL AIR DEVICES.
 - ADD INSULATION TO THE BACK OF ALL AIR DEVICES WHERE DUCTWORK ALSO REQUIRES INSULATION.

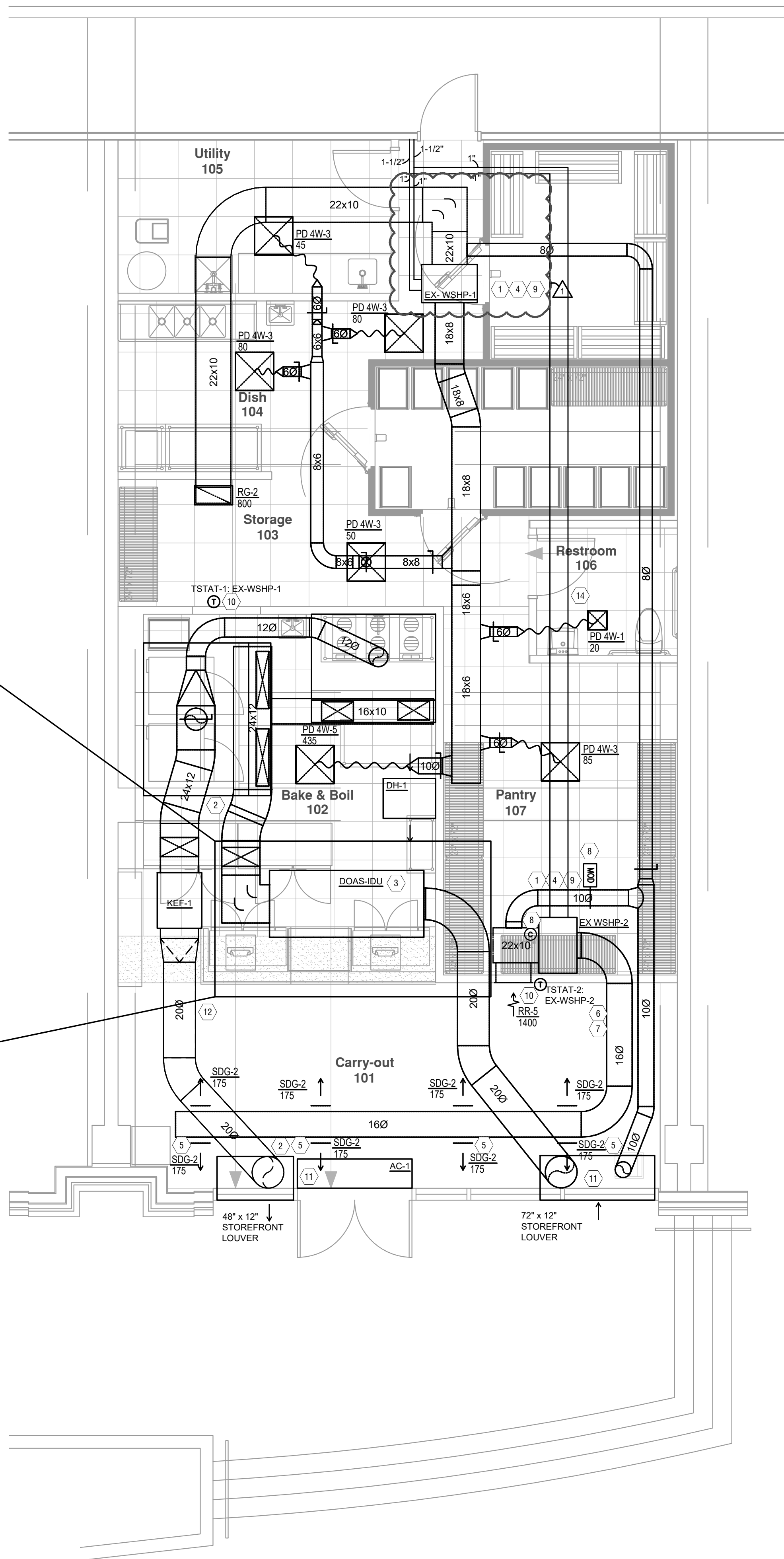
SYMBOLS LEGEND - HVAC

⊙	THERMOSTAT
⊙	CO2 SENSOR
⊙	REMOTE SENSOR
⊠	CEILING DIFFUSER
→	SIDE WALL GRILLE
←	RETURN WALL GRILLE
↔	AIR FLOW DIRECTION
14x10	DUCTWORK
14x10	LINED DUCTWORK
⊠	TYPICAL SUPPLY DUCT DN
⊠	TYPICAL RETURN DUCT DN
⊠	TYPICAL EXHAUST DUCT
⊠	TURNING VANES
⊠	FLEXIBLE DUCT, 8'-0" LONG MAX.
⊠	TYPICAL ROUND DUCT DN
⊠	ROUND DUCT UP
⊠	MVD MANUAL VOLUME DAMPER
⊠	MOD MOTOR OPERATED DAMPER
⊠	DROPPED CEILING/SOFFIT
⊠	DUCT CONTINUATION
⊠	CONNECTION POINT



MECHANICAL ALTERNATE DOAS DESIGN
SCALE: 1/2" = 1'-0"

- ### ALTERNATE DESIGN NOTES
- DUE TO LONG LEAD TIME ON DOAS VENTILATION EQUIPMENT, ALTERNATE DESIGN WILL BE PROVIDED TO MEET VENTILATION REQUIREMENTS.
 - ALTERNATE DESIGN IS NOT CAPABLE OF CONDITIONING OUTSIDE AIR DURING SUMMER DESIGN CONDITIONS. INTENT IS FOR DOAS EQUIPMENT TO ARRIVE AND BE INSTALLED PRIOR TO THE SUMMER COOLING SEASON.
 - WHEN INSTALLING ALTERNATE DESIGN, INSTALL LINESET AND ELECTRICAL CONNECTIONS FOR FUTURE SPLIT DOAS.
 - ALTERNATE DESIGN INTENDED AS A TEMPORARY SOLUTION UNTIL DOAS ARRIVES.



MECHANICAL FLOOR PLAN
SCALE: 1/4" = 1'-0"

MECHANICAL SCOPE OF WORK

REUSE EXISTING WSHPS TO CONDITION NEW BAGEL SHOP. PROVIDE HOODS AND SPLIT DOAS FOR KITCHEN EXHAUST SYSTEM. PROVIDE BATHROOM EXHAUST FANS AND OUTSIDE AIR INTAKES THROUGH STOREFRONT LOUVERS.

CODES & STANDARDS REFERENCED

- 2018 NASHVILLE AND DAVIDSON COUNTY MECHANICAL CODE
- 2018 NASHVILLE AND DAVIDSON COUNTY BUILDING CODE
- 2018 NASHVILLE AND DAVIDSON COUNTY ENERGY CONSERVATION CODE

HVAC DESIGN CONDITIONS

COOLING	93 DB / 75 WB	HEATING	0 DB
INDOOR:	72	INDOOR:	70

GENERAL NOTES

- FOR FULL SCHEDULES, SPECIFICATIONS, AND COMPLETE LISTING SEE DETAIL SHEETS.
- COORDINATE ROUTING OF ALL WORK WITH OTHER TRADES.
- COORDINATE WITH ELECTRICAL CONTRACTOR FOR POWER CONNECTIONS TO ALL MECHANICAL EQUIPMENT.
- INSTALL ALL EQUIPMENT PER MANUFACTURER'S REQUIREMENTS. MAINTAIN ALL CODE RECOMMENDED CLEARANCES FOR ACCESS AND MAINTENANCE.
- REFER TO ARCHITECTURAL PLANS FOR DIMENSIONS, AND FINAL CEILING DIFFUSER LOCATIONS.
- MAINTAIN ALL CODE REQUIRED SERVICE CLEARANCES. FOLLOW CLEARANCE TO COMBUSTIBLE DISTANCE PER MANUFACTURER'S INSTRUCTIONS.
- PROVIDE BACKDRAFT DAMPERS FOR ALL EXHAUST SYSTEMS AND EITHER LOUVER, BRICK VENT, OR CAPS AT ALL EXTERIOR BUILDING PENETRATIONS.
- PROVIDE AN AUXILIARY DRAIN PAN WITH OVERFLOW SWITCH UNDERNEATH HORIZONTAL UNITS, WHICH WILL SHUTOFF THE UNIT ON HIGH WATER LEVEL.
- ROUTE ALL AIR CONDITIONER CONDENSATE TO NEAREST LABORATORY. PROVIDE MINIMUM SLOPE OF 1/8" PER FOOT. SIZE CONDENSATE PER SECTION 307.2.2 OF THE NASHVILLE AND DAVIDSON COUNTY MECHANICAL CODE.
- MOUNT THERMOSTATS 60" ABOVE FINISHED FLOOR.
- ANY EQUIPMENT THAT IS SUBSTITUTED SHALL FIT IN THE SPACE PROVIDED WITH ADEQUATE ROOM FOR SERVICING, INCLUDING SUBSTITUTE EQUIPMENT NAMED IN THE SPECIFICATIONS. SUBMIT A 1/4" SCALE DRAWING OF ALL EQUIPMENT SUBSTITUTED FOR APPROVAL PRIOR TO INSTALLATION, INCLUDING, BUT NOT LIMITED TO, STRUCTURAL AND ARCHITECTURAL IMPACT, CLEARANCE REQUIREMENTS AND UTILITY REQUIREMENTS. IT IS THE RESPONSIBILITY OF THE MECHANICAL CONTRACTOR TO COORDINATE ALL NEW ELECTRICAL AND PLUMBING REQUIREMENTS WITH THE ELECTRICAL AND PLUMBING CONTRACTORS.
- PROVIDE ALL NECESSARY MODIFICATIONS TO CONTROL WIRING, ETC. TO RELOCATE EXISTING MECHANICAL EQUIPMENT TO NEW LOCATIONS SHOWN.
- HOOD AND FANS ARE SUPPLIED AND INSTALLED BY FOOD SERVICE CONTRACTOR. ALL HOOD AND HOOD MAKE UP AIR DRAWINGS ARE FOR REFERENCE AND REQUIREMENTS FOR OTHER TRADES.
- REFER TO FOOD SERVICE DRAWINGS FOR KITCHEN HOOD/EXHAUST SCHEDULES AND DETAILS.

KEYED SHEET NOTES

- ROUTE 3/4" CONDENSATE DRAIN LINE TO NEAREST LABORATORY. SLOPE PIPE A MINIMUM OF 1/8" PER FOOT AWAY FROM UNIT.
- ROUTE EXHAUST TO LOUVERED STOREFRONT PLENUM. INSTALL A BACKDRAFT DAMPER IN EACH BRANCH. SEE ARCHITECT BEFORE PENETRATION FOR EXACT LOCATION AND COLOR COORDINATION. ALL EXHAUST SHALL MEET THE FOLLOWING REQUIREMENTS.
 - FROM PROPERTY LINE.
 - 3' FROM OPERABLE OPENINGS INTO BUILDING.
 - 10' FROM MECHANICAL AIR INTAKE
- ROUTE LINE SET FROM OUTDOOR UNIT TO INDOOR DOAS. ALL PIPING SHALL BE CONCEALED IN FINISHED AREA. SIZE PER MANUFACTURER'S RECOMMENDATIONS. REFER TO ARCHITECT DRAWINGS FOR LOCATION OF OUTDOOR UNIT CONCRETE PAD.
- PROVIDE SECONDARY DRAIN PAN WITH OVERFLOW SWITCH THAT WILL SHUT OFF THE UNIT ON HIGH WATER LEVEL.
- MOUNT SPIRAL DUCT GRILLE AT A 45 DEGREE ANGLE DOWN TOWARD THE WINDOW (TYPICAL).
- ALL EXPOSED DUCTWORK TO BE PAINTED. REFER TO ARCHITECTURAL SHEET FOR COLORS.
- ALL EXPOSED DUCTWORK TO BE DOUBLE WALL INSULATED. MINIMUM R-6. PROVIDE AND INSTALL CO2 SENSOR IN RETURN DUCTWORK. SET OUTSIDE AIR FLOW TO 10% OF THE TOTAL AIRFLOW OF THE SYSTEM. WHEN CO2 LEVELS RISE ABOVE 1000 PPM (ADJUSTABLE) IN THE SPACE MOTOR OPERATED DAMPER SHALL ADJUST TO ALLOW THE OUTSIDE AIRFLOW LISTED IN THE VENTILATION SCHEDULE. MOTOR OPERATED DAMPER TO CLOSE WHEN UNIT IS NOT
- EXISTING WSHWP TO REMAIN. RELOCATE TO NEW LOCATION SHOWN.
- PROVIDE NEW PROGRAMMABLE THERMOSTAT COMPATIBLE WITH EXISTING EQUIPMENT.
- PROVIDE PLENUM BEHIND STOREFRONT LOUVER. COORDINATE LOUVER LOCATION WITH ARCHITECT. OUTSIDE AIR AND EXHAUST LOUVERS TO BE MINIMUM 10' APART PER NDCMC SEC 501.3.1.
- DUCT TO BE DOUBLE WALLED. MECHANICAL CONTRACTOR TO PROVIDE PAINTABLE SURFACE FOR PAINTING BY OTHERS. REFER TO ARCHITECTURAL SHEET FOR COLORS.
- PROVIDE PROGRAMMABLE THERMOSTAT. COORDINATE FINAL LOCATION OF THERMOSTAT WITH ARCHITECT PRIOR TO INSTALLATION. FOR THERMOSTATS INSTALLED ON EXPOSED BRICK WALLS, PROVIDE CONDUIT FOR THERMOSTAT WIRE.
- EXISTING RESTROOM TO STAY ON BUILDING EXHAUST SYSTEM.



226 11th Ave S #6
 Nashville, TN 37203

innomia DESIGN
 PopUp Bagels - Gulch Crossing

01/14/2026
REVISION #1

mechanical floor plan

