

Z:\r\rm\Project Directory\RTM\Projects\Insomnia Design - Pop Up Bagels - The Gulch - Nashville\Construction Documents\REF-AFT.dwg - Model - Plot Date/Time: Aug 19, 2025-2:16pm - By: m.perry
 THESE DRAWINGS AND SPECIFICATIONS ARE NOT AUTHORIZED TO BE USED AS CONTRACT DOCUMENTS. THESE DRAWINGS HAVE BEEN PREPARED TO DEMONSTRATE COMPLIANCE WITH APPLICABLE CODES, AND ARE INTENDED TO PROVIDE THE AUTHORITIES HAVING JURISDICTION WITH INFORMATION TO DETERMINE CODE COMPLIANCE. THE INSTALLING CONTRACTOR IS RESPONSIBLE TO ENSURE THAT MEANS, METHODS, AND MATERIALS USED IN CONSTRUCTION ARE INSTALLED IN ACCORDANCE WITH ANY CONTRACTUAL AGREEMENT THAT MAY EXIST WITH AN OWNER, CONSTRUCTION MANAGER, GENERAL CONTRACTOR, ETC. RTM ACCEPTS NO RESPONSIBILITY OR LIABILITY FOR THE COMPLIANCE OR CONDITION OF EXISTING EQUIPMENT AND WIRING.

DIFFUSER, GRILLE, AND REGISTER SCHEDULE

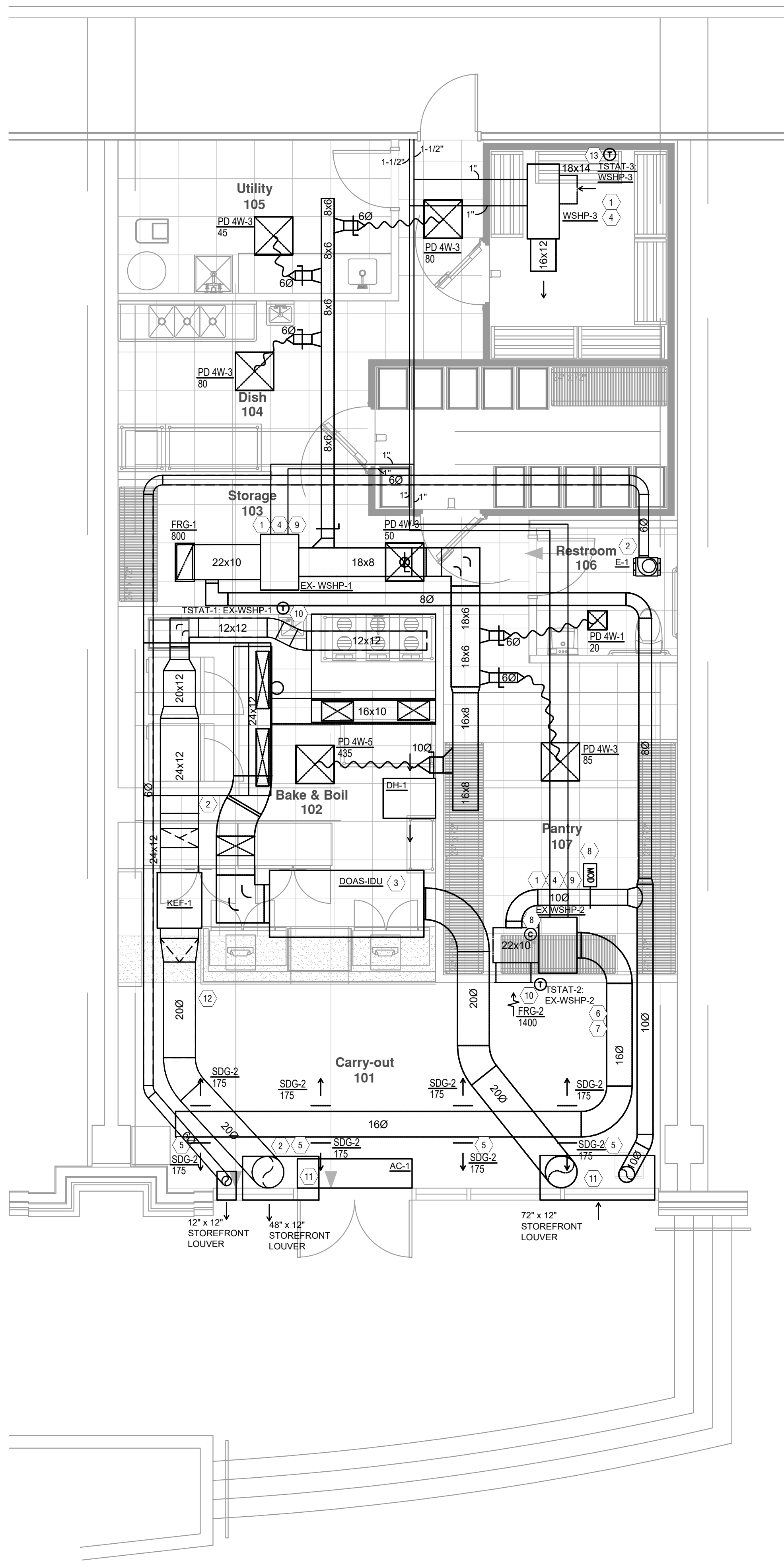
CALLOUT	DESCRIPTION	FACE SIZE (IN)	INLET SIZE (IN)	MODEL	NOTES
FRG-1	LONG BLADE 1/2" SPACING, 35 DEGREE DEFLECTION STEEL LOUVERED FILTER RETURN GRILLE	24x12	22x10	TITUS 355RFL1	#26 WHITE FINISH.
FRG-2	LONG BLADE 1/2" SPACING, 35 DEGREE DEFLECTION STEEL LOUVERED FILTER RETURN GRILLE	24x12	22x10	TITUS 355RFL1	#26 WHITE FINISH.
PD 4W-1	4-WAY STEEL PLAQUE FACE DIFFUSER	12x12	6Ø	TITUS OMNI	REMOVABLE CORE FROM FACE OF DIFFUSER. INSULATE BACK OF DIFFUSER.
PD 4W-3	4-WAY STEEL PLAQUE FACE DIFFUSER	24x24	6Ø	TITUS OMNI	REMOVABLE CORE FROM FACE OF DIFFUSER. INSULATE BACK OF DIFFUSER.
PD 4W-5	4-WAY STEEL PLAQUE FACE DIFFUSER	24x24	10Ø	TITUS OMNI	REMOVABLE CORE FROM FACE OF DIFFUSER. INSULATE BACK OF DIFFUSER.
SDG-2	ALUMINUM SPIRAL DUCT MOUNTED DOUBLE DEFLECTION SUPPLY GRILLE WITH RADIUS END CAP, 3/4" SPACING WITH FRONT BLADES PARALLEL TO THE LONG DIMENSION.	12x6	10x4	TITUS S300FL	AIR SCOOP DAMPER

NOTES FOR ALL AIR DEVICES:

- REFER TO ARCHITECTURAL REFLECTED CEILING PLANS FOR MOUNTING TYPE
- DUCT RUN-OUT SAME SIZE AS NECK UNLESS NOTED OTHERWISE
- PLASTER FRAME WHERE LOCATED IN GYPSUM CEILING
- PAINT DUCTWORK THAT IS VISIBLE BEHIND AIR DEVICES MATTE BLACK
- AIR DEVICES SHALL BE ALUMINUM IN HIGH MOISTURE AREAS, (RESTROOMS)
- DO NOT CONNECT AIR DEVICE DIRECTLY TO DUCT. PROVIDE FULL SIZE TAKE-OFF WITH BALANCING DAMPER AND 45 DEGREE FLARED OUT CONNECTION TO MAIN OR BRANCH DUCT.
- WHERE AIR DEVICES ARE LOCATED IN A FIRE RATED ASSEMBLY, PROVIDE CEILING RADIATION DAMPERS, FIRE DAMPER, FIRE RATED INSULATION, AS REQUIRED PER CODE.
- WHERE DAMPER IN DUCTWORK IS NOT ACCESSIBLE, PROVIDE METROPOLITAN AIR TRANSFER (MAT) MODEL RT-150 SERIES CABLE ACTUATED DAMPER DRIVE SYSTEM, OR APPROVED EQUAL.
- PROVIDE SAMPLE AIR DEVICES STYLE AND COLOR, FOR OWNER'S REPRESENTATIVE APPROVAL, BEFORE ORDERING FINAL AIR DEVICES.
- ADD INSULATION TO THE BACK OF ALL AIR DEVICES WHERE DUCTWORK ALSO REQUIRES INSULATION.

SYMBOLS LEGEND -- HVAC

⊙	THERMOSTAT
⊙	CO2 SENSOR
⊙	REMOTE SENSOR
⊗	CEILING DIFFUSER
→	SIDE WALL GRILLE
←	RETURN WALL GRILLE
↔	AIR FLOW DIRECTION
14x10	DUCTWORK
14x10	LINED DUCTWORK
⊗	TYPICAL SUPPLY DUCT DN
⊗	TYPICAL RETURN DUCT DN
⊗	TYPICAL EXHAUST DUCT
↺	TURNING VANES
⊗	FLEXIBLE DUCT, 8'-0" LONG MAX.
⊗	TYPICAL ROUND DUCT DN
⊗	ROUND DUCT UP
⊗	MVD MANUAL VOLUME DAMPER
MOD	MVD MOTOR OPERATED DAMPER
⊗	DROPPED CEILING/SOFT
⊗	DUCT CONTINUATION
⊗	CONNECTION POINT



1
MECHANICAL FLOOR PLAN
 SCALE: 1/4" = 1'-0"

MECHANICAL SCOPE OF WORK
REUSE EXISTING WSHPS TO CONDITION NEW BAGEL SHOP. PROVIDE HOODS AND SPLIT DOAS FOR KITCHEN EXHAUST SYSTEM. PROVIDE BATHROOM EXHAUST FANS AND OUTSIDE AIR INTAKES THROUGH STOREFRONT LOUVERS.

CODES & STANDARDS REFERENCED
<ul style="list-style-type: none"> 2018 NASHVILLE AND DAVIDSON COUNTY MECHANICAL CODE 2018 NASHVILLE AND DAVIDSON COUNTY BUILDING CODE 2018 NASHVILLE AND DAVIDSON COUNTY ENERGY CONSERVATION CODE

HVAC DESIGN CONDITIONS	
COOLING OUTDOOR: 93 DB / 75 WB INDOOR: 72	HEATING OUTDOOR: 0 DB INDOOR: 70

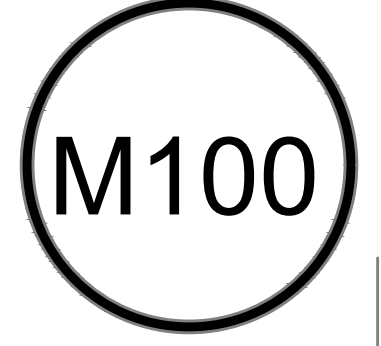
GENERAL NOTES
A. FOR FULL SCHEDULES, SPECIFICATIONS, AND COMPLETE LISTING SEE DETAIL SHEETS.
B. COORDINATE ROUTING OF ALL WORK WITH OTHER TRADES.
C. COORDINATE WITH ELECTRICAL CONTRACTOR FOR POWER CONNECTIONS TO ALL MECHANICAL EQUIPMENT.
D. INSTALL ALL EQUIPMENT PER MANUFACTURER'S REQUIREMENTS. MAINTAIN ALL CODE RECOMMENDED CLEARANCES FOR ACCESS AND MAINTENANCE.
E. REFER TO ARCHITECTURAL PLANS FOR DIMENSIONS, AND FINAL CEILING DIFFUSER LOCATIONS.
F. MAINTAIN ALL CODE REQUIRED SERVICE CLEARANCES. FOLLOW CLEARANCE TO COMBUSTIBLE DISTANCE PER MANUFACTURER'S INSTRUCTIONS.
G. PROVIDE BACKDRAFT DAMPERS FOR ALL EXHAUST SYSTEMS AND EITHER LOUVER, BRICK VENT, OR CAPS AT ALL EXTERIOR BUILDING PENETRATIONS.
H. PROVIDE AN AUXILIARY DRAIN PAN WITH OVERFLOW SWITCH UNDERNEATH HORIZONTAL UNITS, WHICH WILL SHUTOFF THE UNIT ON HIGH WATER LEVEL.
I. ROUTE ALL AIR CONDITIONER CONDENSATE TO NEAREST LABORATORY. PROVIDE MINIMUM SLOPE OF 1/8" PER FOOT. SIZE CONDENSATE PER SECTION 307.2.2 OF THE NASHVILLE AND DAVIDSON COUNTY MECHANICAL CODE.
J. MOUNT THERMOSTATS 60" ABOVE FINISHED FLOOR.
K. ANY EQUIPMENT THAT IS SUBSTITUTED SHALL FIT IN THE SPACE PROVIDED WITH ADEQUATE ROOM FOR SERVICING, INCLUDING SUBSTITUTED EQUIPMENT NAMED IN THE SPECIFICATIONS. SUBMIT A 1/4" SCALE DRAWING OF ALL EQUIPMENT SUBSTITUTED FOR APPROVAL PRIOR TO INSTALLATION, INCLUDING, BUT NOT LIMITED TO, STRUCTURAL AND ARCHITECTURAL IMPACT, CLEARANCE REQUIREMENTS AND UTILITY REQUIREMENTS. IT IS THE RESPONSIBILITY OF THE MECHANICAL CONTRACTOR TO COORDINATE ALL NEW ELECTRICAL AND PLUMBING REQUIREMENTS WITH THE ELECTRICAL AND PLUMBING CONTRACTORS.
L. PROVIDE ALL NECESSARY MODIFICATIONS TO CONTROL WIRING, ETC. TO RELOCATE EXISTING MECHANICAL EQUIPMENT TO NEW LOCATIONS SHOWN.
Q. HOOD AND FANS ARE SUPPLIED AND INSTALLED BY FOOD SERVICE CONTRACTOR. ALL HOOD AND HOOD MAKE UP AIR DRAWINGS ARE FOR REFERENCE AND REQUIREMENTS FOR OTHER TRADES.
R. REFER TO FOOD SERVICE DRAWINGS FOR KITCHEN HOOD/EXHAUST SCHEDULES AND DETAILS.

KEYED SHEET NOTES
1. ROUTE 3/4" CONDENSATE DRAIN LINE TO NEAREST LABORATORY. SLOPE PIPE A MINIMUM OF 1/8" PER FOOT AWAY FROM UNIT.
2. ROUTE EXHAUST TO LOUVERED STOREFRONT PLENUM. INSTALL A BACKDRAFT DAMPER IN EACH BRANCH. SEE ARCHITECT BEFORE PENETRATION FOR EXACT LOCATION AND COLOR COORDINATION. ALL EXHAUST SHALL MEET THE FOLLOWING REQUIREMENTS: 2.1. 3' FROM PROPERTY LINE. 2.2. 3' FROM OPERABLE OPENINGS INTO BUILDING. 2.3. 10' FROM MECHANICAL AIR INTAKE
3. ROUTE LINE SET FROM OUTDOOR UNIT TO INDOOR DOAS. ALL PIPING SHALL BE CONCEALED IN FINISHED AREA. SIZE PER MANUFACTURER'S RECOMMENDATIONS. REFER TO ARCHITECT DRAWINGS FOR LOCATION OF OUTDOOR UNIT CONCRETE PAD.
4. PROVIDE SECONDARY DRAIN PAN WITH OVERFLOW SWITCH THAT WILL SHUT OFF THE UNIT ON HIGH WATER LEVEL.
5. MOUNT SPIRAL DUCT GRILLE AT A 45 DEGREE ANGLE DOWN TOWARD THE WINDOW (TYPICAL).
6. ALL EXPOSED DUCTWORK TO BE PAINTED. REFER TO ARCHITECTURAL SHEET FOR COLORS.
7. ALL EXPOSED DUCTWORK TO BE DOUBLE WALL INSULATED. MINIMUM R-6.
8. PROVIDE AND INSTALL CO2 SENSOR IN RETURN DUCTWORK. SET OUTSIDE AIR FLOW TO 10% OF THE TOTAL AIRFLOW OF THE SYSTEM. WHEN CO2 LEVELS RISE ABOVE 1000 PPM (ADJUSTABLE) IN THE SPACE MOTOR OPERATED DAMPER SHALL ADJUST TO ALLOW THE OUTSIDE AIRFLOW LISTED IN THE VENTILATION SCHEDULE. MOTOR OPERATED DAMPER TO CLOSE WHEN UNIT IS NOT
9. EXISTING WSHWP TO REMAIN. RELOCATE TO NEW LOCATION SHOWN.
10. PROVIDE NEW PROGRAMMABLE THERMOSTAT COMPATIBLE WITH EXISTING EQUIPMENT.
11. PROVIDE PLENUM BEHIND STOREFRONT LOUVER. COORDINATE LOUVER LOCATION WITH ARCHITECT. OUTSIDE AIR AND EXHAUST LOUVERS TO BE MINIMUM 10' APART PER NDCMC SEC 501.3.1.
12. DUCT TO BE DOUBLE WALLED. MECHANICAL CONTRACTOR TO PROVIDE PAINTABLE SURFACE FOR PAINTING BY OTHERS. REFER TO ARCHITECTURAL SHEET FOR COLORS.
13. PROVIDE PROGRAMMABLE THERMOSTAT. COORDINATE FINAL LOCATION OF THERMOSTAT WITH ARCHITECT/OWNER PRIOR TO INSTALLATION. FOR THERMOSTATS INSTALLED ON EXPOSED BRICK WALLS, PROVIDE CONDUIT FOR THERMOSTAT WIRE.



Pop Up Bagels - Gulch Crossing
 226 11th Ave S #6
 Nashville, TN 37203
insomnia DESIGN

20 AUGUST 2025
 Permit





Z:\rtm\Project Directory\RTM Projects\insomnia Design - EB0323\25.EB0323.406 Pop Up Bagels - The Gulch - Nashville TN\Project\Construction Documents\REF-AFI.dwg - Model - Plot Date/Time: Aug 19, 2025 - 2:16pm - By: m.perry
THESE DRAWINGS AND SPECIFICATIONS ARE NOT AUTHORIZED TO BE USED AS CONTRACT DOCUMENTS. THESE DRAWINGS HAVE BEEN PREPARED TO DEMONSTRATE COMPLIANCE WITH APPLICABLE CODES, AND ARE INTENDED TO PROVIDE THE AUTHORITIES HAVING JURISDICTION WITH INFORMATION TO DETERMINE CODE COMPLIANCE. THE INSTALLING CONTRACTOR IS RESPONSIBLE TO ENSURE THAT MEANS, METHODS, AND MATERIALS USED IN CONSTRUCTION ARE INSTALLED IN ACCORDANCE WITH ANY CONTRACTUAL AGREEMENT THAT MAY EXIST WITH AN OWNER, CONSTRUCTION MANAGER, GENERAL CONTRACTOR, ETC. RTM ACCEPTS NO RESPONSIBILITY OR LIABILITY FOR THE COMPLIANCE OR CONDITION OF EXISTING EQUIPMENT AND WIRING.

WATER SOURCE HEAT PUMP SCHEDULE

GENERAL INFORMATION										SUPPLY FAN			HEAT PUMP COOLING										HEAT PUMP HEATING					ELECTRICAL								
TAG	MFR	MODEL#	AREA SERVED	REFRIGERANT	FILLED WEIGHT (LBS.)	MOUNTING	NOTES	SA-CFM	ESP (W.C.)	HP	COND-GPM	PRESSURE DROP (FT.HD.)	TOTAL CLG (MBH)	SENS CLG (MBH)	CLG-LWT (°F)	CLG-LWT (°F)	CLG-EDB (°F)	CLG-EWB (°F)	CLG-LDB (°F)	CLG-LWB (°F)	EER	COND-GPM	PRESSURE DROP (FT.HD.)	HTG-MBH	HTG-EWT	HTG-LWT	HTG-EDB	HTG-LDB	COP	VOLT/PHASE	MCA	MOC				
EX-WSHP-1	TRANE	GEHE0243	REFERENCE DRAWINGS		EXISTING TO REMAIN		1-7																													
EX-WSHP-2	TRANE	GEHE0423	REFERENCE DRAWINGS		EXISTING TO REMAIN		1-7																													
WSHP-3	CLIMATE MASTER	SC-036	REFERENCE DRAWINGS	R-454B	203	HORIZONTAL	1-7	1,200	0.5	-	7.5	4.1	34.8	27	85	97	80	67					59.2	57.7	14.2	7.5	4.6	41.2	60	52	68	99.8	4.5	208/3	18	25

- HOSE VALVE KIT
- WET SWITCH INSTALLED IN CONDENSATE OVERFLOW CAPABLE OF SHUTTING DOWN UNIT UPON DETECTION OF HIGH WATER LEVEL
- SPRING VIBRATION ISOLATION EQUIPMENT HANGER
- REFRIGERANT DETECTION SYSTEM
- PROGRAMMABLE THERMOSTAT
- ECM CONSTANT VOLUME
- DOUBLE WALL INSULATED.

DEDICATED OUTDOOR AIR UNIT (DOAS) SCHEDULE

INDOOR TAG				AREA SERVED				SUPPLY FAN		SPLIT DX COOLING										HEATING (ELECTRIC HEAT)				ELECTRICAL (EXCLUDES CU)				GENERAL INFORMATION		
INDOOR TAG	AREA SERVED	MANUFACTURER	MODEL	CFM	ESP	DOAS-TAG	REMOTE HP MODEL #	TOTAL MBH	SENS MBH	TONNAGE	EAT (DB/WB)	LAT (DB/WB)	FLA	MCA	MOC	HEAT KIT SIZE (KW)	STAGES	EAT (DB)	LAT (DB)	VOLT/PHASE	FLA	MCA	MOC	MOUNTING	WEIGHT	NOTES				
DOAS-IDU	REFER TO	AAON	H3-005-0-B-A0BC-V0-00-00-A	2000	0.5	DOAS-ODU	CF-005-3-A-GA0C-00-21-000-A	71.2	57.7	5	94/75	67/65	21	25	40	31.5	4.1	MODULATING	20	71	208/3	90	112	125	INDOOR ABOVE CEILING	557	1-10			

- DIRTY FILTER SENSOR
- SUPPLY TEMPERATURE SENSOR
- OUTSIDE AIR TEMPERATURE SENSOR
- A2L MITIGATION BOARD
- SAFETY SHUT DOWN
- SUCTION PRESSURE SENSOR
- DISCHARGE PRESSURE SENSOR
- DOAS WILL HAVE REMOTE HEAT PUMP, REFER TO ARCHITECTURE PLANS FOR OUTDOOR UNIT LOCATION
- INLINE DISCHARGE INTAKE
- MECHANICAL CONTRACTOR RESPONSIBLE FOR REFRIGERANT PIPING AND CONTROLS WIRING BETWEEN DOAS AND REMOTE HEAT PUMP

AIR CURTAIN SCHEDULE

TAG	AREA SERVED	MANUFACTURER	MODEL	LENGTH	CFM	MOTOR HP	MOTOR AMPS	MOC	VOLT/PHASE	WEIGHT	NOTES
AC-1	CARRY OUT	BERNER	CHD10-1036A	38	1,804	1 @ 1/2	6.5	15	120/1	50	1

- REMOVABLE PROTECTIVE INLET SCREEN

FAN SCHEDULE

TAG	TYPE	AREA SERVED	MANUFACTURER	MODEL	DRIVE	CFM	ESP	WATTS	RPM	VOLT/PHASE	MOUNTING	WEIGHT	NOTES
E-1	EXHAUST	TOILET	GREENHECK	SP-B80	DIRECT	70	0.15	54	900	115/60/1	CEILING	11	-

- FAN SHALL RUN OFF WALL SWITCH PROVIDED BY MECHANICAL CONTRACTOR

DEHUMIDIFIER SCHEDULE

TAG	AREA SERVED	MANUFACTURER	MODEL	CAPACITY - PINTS/24 HR	AMPS	MCA	MOC	VOLT/PHASE	MOUNTING	WEIGHT	NOTES
DH-1	KITCHEN	QUESTCLIMATE	4046200	221	8.4	15	20	208/3	SUSPENDED	215	1,2,3,4,5

- ENERGY STAR RATED
- INTEGRAL HUMIDITY CONTROLS
- THREE SPEED FAN

POP-UP BAGELS BUILDING AIR BALANCE SUMMARY

	HOOD/MUA	WSHP-1	WSHP-2	E-1	TOTAL
OUTSIDE AIR	2000	135	305	0	2440
EXHAUST AIR	2,175	-	-	50	2225
					215+

PUB BUILDING AIR BALANCE SUMMARY - LOW CO2

	HOOD/MUA	WSHP-1	WSHP-2	E-1	TOTAL
OUTSIDE AIR	2000	135	140	0	2275
EXHAUST AIR	2,175	-	-	70	2245
					30+

DUCT INSULATION SCHEDULE

EQUIPMENT	AIR DISTRIBUTION TYPE							ADDITIONAL NOTES
	SA	SA (EXPOSED)	RA	OA	OA (EXPOSED)	EA	EA (EXPOSED)	
HOOD/MUA WSHP 1-3	R-6	R-6	R-6	R-6	R-4	-	-	2
	-	-	-	R-6	R-4	-	R-6	1,2

DUCT INSULATION REQUIREMENTS ARE BASED ON TABLE 6.8.2B OF 2019 NASHVILLE DAVIDSON COUNTY ENERGY CODE
 PROVIDE DUCTWORK OF SUFFICIENT THICKNESS TO MEET THE INSTALLED R-VALUE REQUIREMENTS LISTED ABOVE.

ITEMS NOT REQUIRED TO BE INSULATED: FIBROUS-GLASS DUCTS, DUCTS WITH LINER THAT MEETS ASHRAE 90.1, FACTORY-INSULATED FLEXIBLE DUCTS, FACTORY-INSULATED PLENUMS AND CASINGS, FLEX CONNECTORS, VIBRATION-CONTROL DEVICES, FACTORY-INSULATED ACCESS PANELS AND DOORS

- EXHAUST AIR DUCTS TO HAVE R-3.5 INSULATION A MINIMUM OF 5FT FROM EXTERIOR PENETRATIONS
- OUTSIDE AIR DUCTS TO HAVE R-8 INSULATION A MINIMUM OF 5FT FROM EXTERIOR PENETRATIONS

MECHANICAL SPECIFICATIONS

- General
 - Refer to architectural drawings, general notes, instructions to bidders, general conditions, supplementary general conditions, base building specifications and drawings, shop drawing manuals and as-built plans, except as noted herein, which apply in all respects to this section. The contractor shall visit the site and familiarize himself with all existing conditions prior to bidding the work.
- Use of Drawings And Specifications
 - RTM drawings and specifications are intended to convey design intent only. All means and methods sequences, techniques, and procedures of construction as well as any associated safety precautions and programs, and all incidental and temporary devices required to construct the project, and to provide a complete and fully operational mechanical system are the responsibility of the mechanical contractor.
- Standards
 - Equipment and materials shall conform with appropriate provisions of AGA, ARI, ASME, ASTM, CISPI, UL, NEMA, ANSI, SMACNA, ASHRAE, NFPA, NEC, as applicable to each individual unit or assembly. All equipment must bear UL label.
- License / Experience
 - Contractor must be licensed by the state to install HVAC systems/equipment. Contractor must also have a minimum of 5 years of experience and have installed at least (5) successful project installations of similar size and scope. References must be provided upon request.
- Codes
 - All work shall be performed in strict accordance with all applicable state and local codes and ordinances. The mechanical contractor shall satisfy code requirements at a minimum without any extra cost to the owner. In case of conflict between the drawings/specifications and the codes and ordinances, the highest standard shall apply.
- Permits and Fees
 - The mechanical contractor shall procure and pay for all permits, fees, taxes, and inspections necessary to complete the mechanical work. Furnish certificate of approval for work from inspection authority to owner before final acceptance for work. Certificate of final inspection and approval shall be submitted with the contractor's report for payment. No final payment will be approved without this certificate.
- Site Examination
 - The mechanical contractor shall thoroughly examine all areas of work where equipment, ductwork, and piping will be installed and shall report any condition that, in his opinion, prevents the proper installation of the mechanical work to them or bid. Contractor shall also examine the drawings and specifications of other branches of work, making reference to them for details of new or existing building conditions. No extras will be allowed for failure to include all required work in bid.
 - All work shall be done at times convenient to the owner and only during normal working hours, unless specified otherwise.
 - Mechanical contractor shall take their own measurements and be responsible for them.
- Mechanical Contractor shall show on drawings. During site examination, contractor shall identify all areas where access panels are required, and report to general contractor. Designation of who furnishes and who installs access panels must be coordinated with general contractor prior to starting work.
- Contractor Coordination
 - Coordination drawings showing system and component installation layout, routing, details, etc. Shall be produced by the mechanical contractor and under the supervision of the general contractor/construction manager, or appropriate party as applicable.
 - All systems installed by each sub-contractor shall be coordinated with one another and approved by general contractor/construction manager, etc. prior to installation and/or fabrication.
 - If questions concerning design intent arise during coordination, RTM can assist where appropriate.
 - The architectural drawings shall take precedence over all other drawings. Do not scale distances off the mechanical drawings; use actual building dimensions.
- Shop Drawings / Submittals
 - Submit to the architect electronic copies of complete and certified shop drawings, descriptive data, performance data and ratings, diagrams and specifications on all specified equipment, including accessories, and materials for review. The make, model number, type, finish and accessories of all equipment and materials shall be reviewed and approved by the mechanical contractor and general contractor prior to submitting to the architect for their review and approval. Approval of shop drawings does not relieve the mechanical contractor/vendor from compliance with the requirements of the contract drawings, specifications and applicable codes.
 - Shop drawings shall be required for the following:
 - HVAC equipment
 - Fans
 - Diffusers, registers, grilles, dampers, louvers, and all sheet metal accessories
 - Temperature controls
 - Sheet metal coordination drawings
 - Air balance report

- Products installed by the mechanical contractor and provided by others must be submitted for review prior to purchasing. Products shall not be selected based on permit drawings without express permission - products shall be selected based on construction drawings.
- Record Drawing
 - The mechanical contractor shall be responsible for creating record drawings where required. Drawings shall be produced in Autocad 2004 format or later.
- Testing
 - All mechanical systems shall be tested for proper operation.
- Cutting and Patching
 - Neatly do all cutting as required and patch all cut surfaces to match building construction. The contractor shall employ and pay a trade trained and qualified to perform the required patching work. All surfaces disturbed shall be restored with like materials to the satisfaction of the owner. All penetrations through roof shall be made with bonded roofer. Mechanical contractor shall pay all fees required.
- Warranty
 - The mechanical contractor shall unconditionally warrant all work to be free of defects in equipment, material and workmanship for a period of one (1) year from the date of final acceptance by owner. The mechanical contractor will repair or replace any defective work promptly and without charge to the owner.
 - Restore any other existing work damaged in the course of repairing defective equipment, materials and workmanship.
- Mechanical Work
 - The mechanical contractor shall provide new hvac equipment, fans, ductwork, piping, air devices, controls as indicated on drawings and as specified. Startup and 1st year parts and labor warranty shall be included and manufacturer's extended warranties. Equipment and appliances shall be installed as required by the terms of their approval, in accordance with the conditions of the listing, the manufacturer's installation instructions, and the applicable code.
- Owner's Instructions
 - Provide two sets of complete operating and maintenance instructions with drawings, typewritten instructions and operating sequences and descriptive data sheets. Assemble each set in a hard-bound cover. Provide pdf files of documentation.
- Final
 - Put all equipment in service and demonstrate that all conditions of the contract have been fulfilled. Remove all tools, debris, etc. occasioned by work under this contract. Submit all warranties, test reports, operating and maintenance manuals for HVAC systems, log sheets and charts, and guarantees as previously specified. Provide all reports, forms, etc. required by inspectors to the satisfaction of the owner. Provide as-built record drawings (in Autocad 2007 or later) showing an accurate account of the final installed systems. Systems including but not limited to all equipment and associated controls, ductwork/piping, air devices, etc.
- Sheetmetal Ductwork
 - All sizes of ducts shown on the drawings are interior duct dimensions. All ductwork shall be rigid sheetmetal constructed from galvanized sheet steel in accordance with SMACNA low velocity duct construction standards. All exposed ductwork shall be spiral lock-seam type, as shown on HVAC drawings. Assemble and install ductwork in accordance with recognized industry practice for achieving air tight (5% leakage) and noiseless (no objectionable noise) systems, capable of performing each indicated service. Furnish all required dampers, transitions, offsets, connections to air devices, and other accessories necessary for a complete operating system. Flexible ductwork shall not exceed 8'-0" long.
- Adhesives and Sealants
 - Seal all longitudinal and transverse duct joints with a UL 181A or 181B non-hardening, non-migrating mastic or liquid elastic sealant of a type recommended by the manufacturer for sealing joints and seams in sheet metal ductwork. Cover all field joints, joints around spin-in fittings and fastening screws with mastic. All sealants and gaskets shall have surface-burning characteristics with a maximum flame-spread index of 25 and a maximum smoke-developed index of 50 when tested according to UL 723.
 - Exposed Ductwork: trim duct sealants flush with metal. Create a smooth and uniform exposed bead. Do not use two-part tape sealing system.
- Duct Supports
 - Furnish and install hot-dipped galvanized steel fasteners, hangers, anchors, rods, straps, trim, and angles for support of ductwork.
- Flexible Connections
 - Furnish and install neoprene flexible duct connections at the inlet and discharge of units and fans.
- Duct Manual Volume Dampers
 - Furnish and install opposed-blade, leak-proof volume control dampers where indicated on drawings and locations in supply, return and exhaust ducts where branches are taken from larger ducts or at each individual duct register in order to achieve system air balance quantities. Balancing devices must be provided in accordance with IMC 603.17. All manual volume dampers must be shown on coordination drawings when submitted for review.
- Diffusers, Grilles and Registers
 - Diffusers, grilles and registers shall be manufactured by tilus, price, or engineered approved equal and shall be furnished and installed by the mechanical contractor. Diffusers shall be installed as indicated on the drawings and schedules. The

mechanical contractor shall provide all miscellaneous items necessary for a complete and proper installation in the type of ceiling and walls used in this project.

- Exhaust Fan
 - Fan manufacturer shall be Broan, Cook, Greenheck, or engineered approved equal. Refer to drawings and schedules for unit location, technical data, and any applicable accessories.
- Water Source Heat Pumps
 - Factory assembled, piped, internally wired, fully charged water source heat pumps. Unit shall have manufacturer's standard warranties. Refer to drawings and schedules for unit location, technical data, and applicable accessories.
 - Heat pump manufacturer shall be Daikin, Florida Heat Pump, Climate Master, or engineered approved equal.
- Condensate Drain Piping
 - The mechanical contractor shall furnish and install condensate drains, p-traps with removable cleanout caps for air equipment per manufacturer's recommendations. The p-trap depth shall be at least the depth specified for the respective pressure drop of the unit. Condensate drain piping shall be schedule 40 PVC pipe with solvent weld fittings. All condensate drain lines shall be configured to permit the clearing of blockages and performance of maintenance without requiring the drain line to be cut. For condensate pumps located in uninhabitable spaces (i.e. attics and crawl spaces), provide controls that will shut down the air equipment if the condensate pump fails.
 - All cooling equipment shall have a wet switch in the primary drain line, or in the equipment-supplied drain pan (located at a point higher than the primary drain line connection and below the overflow rim of the pan) that will shut down the unit when the condensate is clogged.
- Piping Supports (Metal Pipe)
 - Furnish and install hot-dipped galvanized steel fasteners, hangers, anchors, rods, straps, trim and angles for support of piping.
- Piping Supports (Plastic Pipe)
 - Furnish and install hangers for plastic piping per manufacturer's requirements.
- Temperature Controls and Control Wiring
 - The mechanical contractor shall provide all control wiring necessary for the complete and proper operating temperature control system. Programmable thermostats shall be provided with equipment packages unless otherwise noted.
 - Exposed wiring: All wiring exposed to the space shall be run in conduit. Coordinate requirements with architectural drawings.
- Testing, Balancing, and Adjusting
 - The individual performing the air balancing shall be a certified test and balancer and a member of NEBB or AABC, using calibrated equipment. The certified air balance contractor shall accurately balance the systems to provide air quantities as indicated on the drawings and in the schedules/specifications, operate automatic control systems, and verify set points during balancing.
- Sequence of Operation
 - Exhaust Fans
 - E-1: exhaust fan shall run off wall switch (furnished by the electrical contractor).
 - Split DOAS
 - DOAS-IDU/DOAS-ODU:
 - Provided by mechanical contractor
 - Heating mode - when the hood system is turned on, the indoor split DOAS fan shall run and the electric heat kit shall energize until the set point is reached. When the temperature set point is reached the heat kit shall remain constant until outside temperature changes.
 - Cooling mode - when the temperature sensor calls for cooling the condensing unit shall engage, the DOAS fan shall run, and the dx cooling coil shall cool the air to maintain temperature setpoint.
 - EX-WSHP-1/2:
 - Heating mode - WSHP shall be controlled from a thermostat in the space. When the thermostat calls for heating the fan shall run and the water heated compressor will run and the coil will produce heat to maintain a temperature setpoint. When the setpoint is reached the unit shall shut off.
 - Cooling mode - when the thermostat calls for cooling the condensing unit shall engage, the fan shall run, and the water-cooled compressor will run, and the coil shall cool the air to maintain temperature setpoint. When the setpoint is reached the unit shall shut off.
 - Ventilation - Install carbon dioxide (CO2) sensor in the return ductwork. CO2 sensor will communicate to control panel then motor damper shall open to minimum position of 10% airflow when CO2 concentration are below 1,000 PPM (adjustable). If levels exceed 1,000 PPM damper shall open to design ventilation air quantity.
 - WSHP-3
 - Cooling Mode - when the thermostat calls for cooling the condensing unit shall engage, the fan shall run, and the water-cooled compressor will run, and the coil shall cool the air to maintain temperature setpoint. When the setpoint is reached the unit shall shut off.

Zone EX-WSHP 1 Ventilation

System Primary Airflow:	800 CFM	Zone Air Distribution Effectiveness:	0.8
Average Outdoor Air Fraction:	0.155	Primary Air Fraction to Zone:	1
Occupant Diversity:	1	Secondary Air Fraction to Zone:	1
Uncorrected Air Intake:	124 CFM	Fraction of Supply Air to Zone from Outside Zone:	1
System Ventilation Efficiency:	0.915	Fraction of Supply Air to Zone from Fully Mixed Primary Air:	1
Outdoor Air Intake:	135 CFM	Fraction of Outdoor Air to Zone from Outside Zone:	1

Room Information

Room	Room Type	People (CFM/person)	People (CFM/person)	Area (ft²)	Rate (CFM/ft²)	Total (CFM)	Level (ft)	Total (CFM)	Breathing Zone Outside Airflow (CFM)	Zone Outside Airflow (CFM)	Zone Discharge Airflow (CFM)	Discharge Outdoor Air Fraction	Zone Ventilation Efficiency
102 - BAKE AND BOIL	Food-Kitchen (cooking)	7.5	2	15	0.12	166	20		35	44	438	0.1	1.07
103 - STORAGE	Storage-Warehouses	10	0	0	0.06	127	8		8	10	50	0.2	0.969
104 - DISH	Food-Kitchen (cooking)	7.5	2	15	0.12	173	21		36	45	164	0.274	0.915
105 - UTILITY	Storage-Warehouses	10	0	0	0.06	115	7		7	9	45	0.2	0.969
106 - RR	Public Spaces-Toilet rooms - public	0	0	0	0	49	0		0	0	18	0	1.17
107 - PANTRY	Storage-Warehouses	10	0	0	0.06	212	13		13	16	84	0.19	0.978

*VENTILATION CALCULATIONS PER NDC 2018 TABLE 403.3.1.1

Zone EX-WSHP 2 Ventilation

System Primary Airflow:	1,400 CFM	Zone Air Distribution Effectiveness:	0.8
Average Outdoor Air Fraction:	0.216	Primary Air Fraction to Zone:	1
Occupant Diversity:	1	Secondary Air Fraction to Zone:	1
Uncorrected Air Intake:	303 CFM	Fraction of Supply Air to Zone from Outside Zone:	1
System Ventilation Efficiency:	1	Fraction of Supply Air to Zone from Fully Mixed Primary Air:	1
Outdoor Air Intake:	302 CFM	Fraction of Outdoor Air to Zone from Outside Zone:	1

Room Information

Room	Room Type	People (CFM/person)	People (CFM/person)	Area (ft²)	Rate (CFM/ft²)	Total (CFM)	Level (ft)	Total (CFM)	Breathing Zone Outside Airflow (CFM)	Zone Outside Airflow (CFM)	Zone Discharge Airflow (CFM)	Discharge Outdoor Air Fraction	Zone Ventilation Efficiency
101 - CARRYOUT	Retail-Sales	7.5	25	188	0.12	448	54		242	303	1,400	0.216	1

*VENTILATION CALCULATIONS PER NDC 2018 TABLE 403.3.1.1



Z:\RTM Project Directory\RTM Projects\Insomnia Design - EB0323\55.EB0323-406 - Pop Up Bagels - The Gulch - Nashville TN\Project\Construction Documents\REF-AFI.dwg - Model - Plot Date/Time: Aug 19, 2025-2:16pm - By: m.perry
 THESE DRAWINGS AND SPECIFICATIONS ARE NOT AUTHORIZED TO BE USED AS CONTRACT DOCUMENTS. THESE DRAWINGS HAVE BEEN PREPARED TO DEMONSTRATE COMPLIANCE WITH APPLICABLE CODES, AND ARE INTENDED TO PROVIDE THE AUTHORITIES HAVING JURISDICTION WITH INFORMATION GENERAL CONTRACTOR, ETC. RTM ACCEPTS NO RESPONSIBILITY OR LIABILITY FOR THE COMPLIANCE OR CONDITION OF EXISTING EQUIPMENT AND WIRING.

FOR QUESTIONS, CALL THE
 Western Ohio Mechanical
 REGION 132
 PHONE: (513) 275 - 4986
 EMAIL: reg133@captivaire.com

PATENT NUMBERS
 AC-PSP (UNITED STATES) - US PATENT 7963830 B2.
 AC-PSP WALL (CANADA) - CA PATENT 2820509.
 AC-PSP ISLAND (CANADA) - CA PATENT 2520330.

HOOD INFORMATION - JOB#7620921

HOOD NO	TAG	MODEL	MANUFACTURER	LENGTH	MAX COOKING TEMP	TYPE	APPLIANCE DUTY	DESIGN CFM/FT	TOTAL EXH CFM	EXHAUST PLENUM RISER(S)				TOTAL SUPPLY CFM	HOOD CONSTRUCTION	HOOD CONFIG		
										WIDTH	LENG	HEIGHT	SP			END TO END	ROW	
1	HD-1	5424 VHB-G-PSP-F-ND	CAPTIVEAIRE	6' 6"	700 DEG	II	N/A	150	975	4'	12'	975	1241	-0.123'	975	430 SS 100%	ALONE	ALONE
2	HD-2	6624 VHB-G-PSP-F-ND	CAPTIVEAIRE	8' 0"	700 DEG	II	N/A	150	1200	4'	14'	1200	1123	-0.115'	1200	430 SS 100%	ALONE	ALONE

HOOD INFORMATION

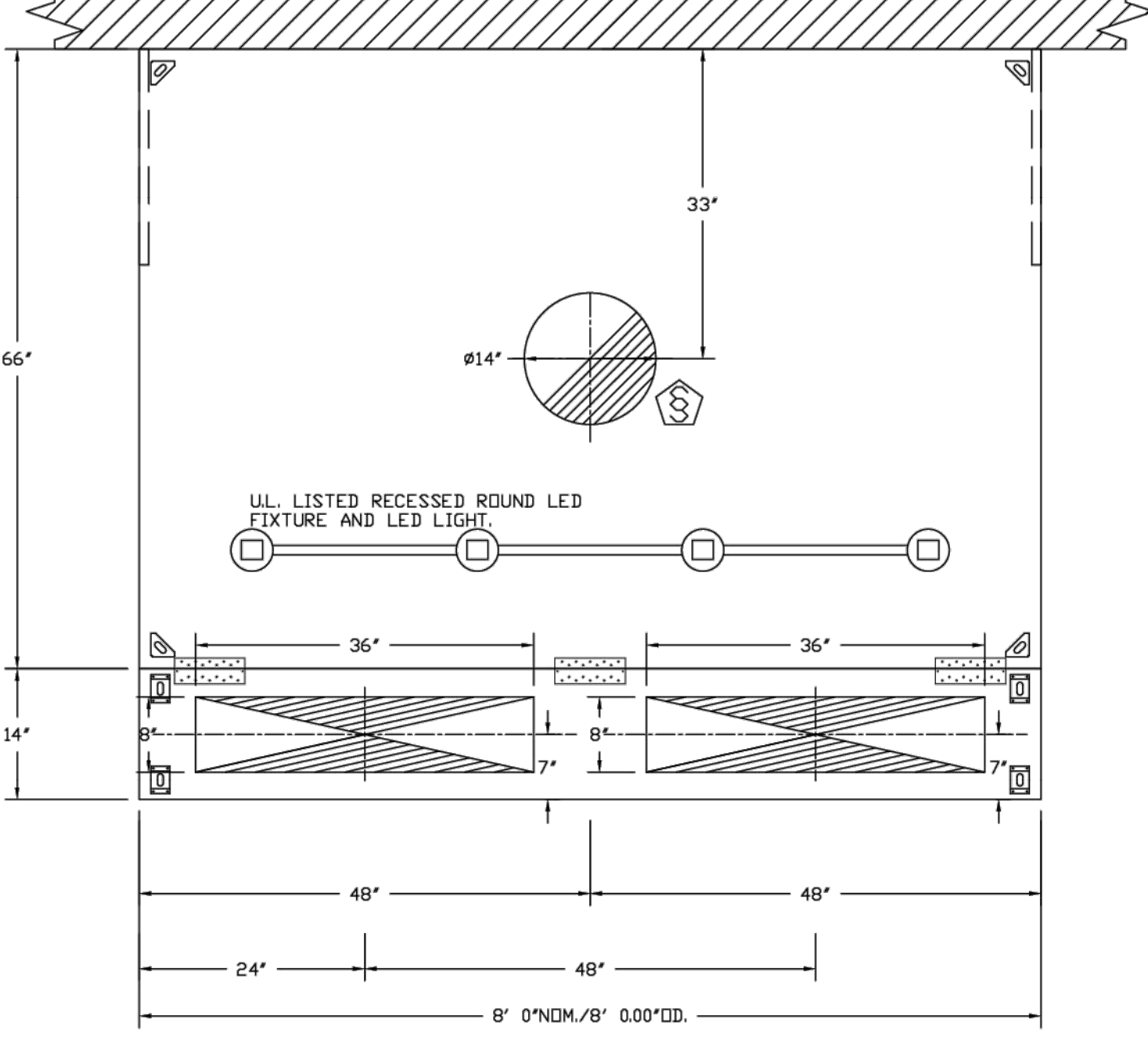
HOOD NO	TAG	FILTER(S)			LIGHT(S)		UTILITY CABINET(S)				FIRE SYSTEM PIPING	HOOD HANGING WEIGHT		
		TYPE	QTY	HEIGHT	EFFICIENCY @ 7 MICRONS	QTY	TYPE	WIRE GUARD	LOCATION	SIZE			FIRE SYSTEM	SIZE
1	HD-1					3	RECESSED ROUND	NO					NO	346 LBS
2	HD-2					4	RECESSED ROUND	NO					NO	437 LBS

HOOD OPTIONS

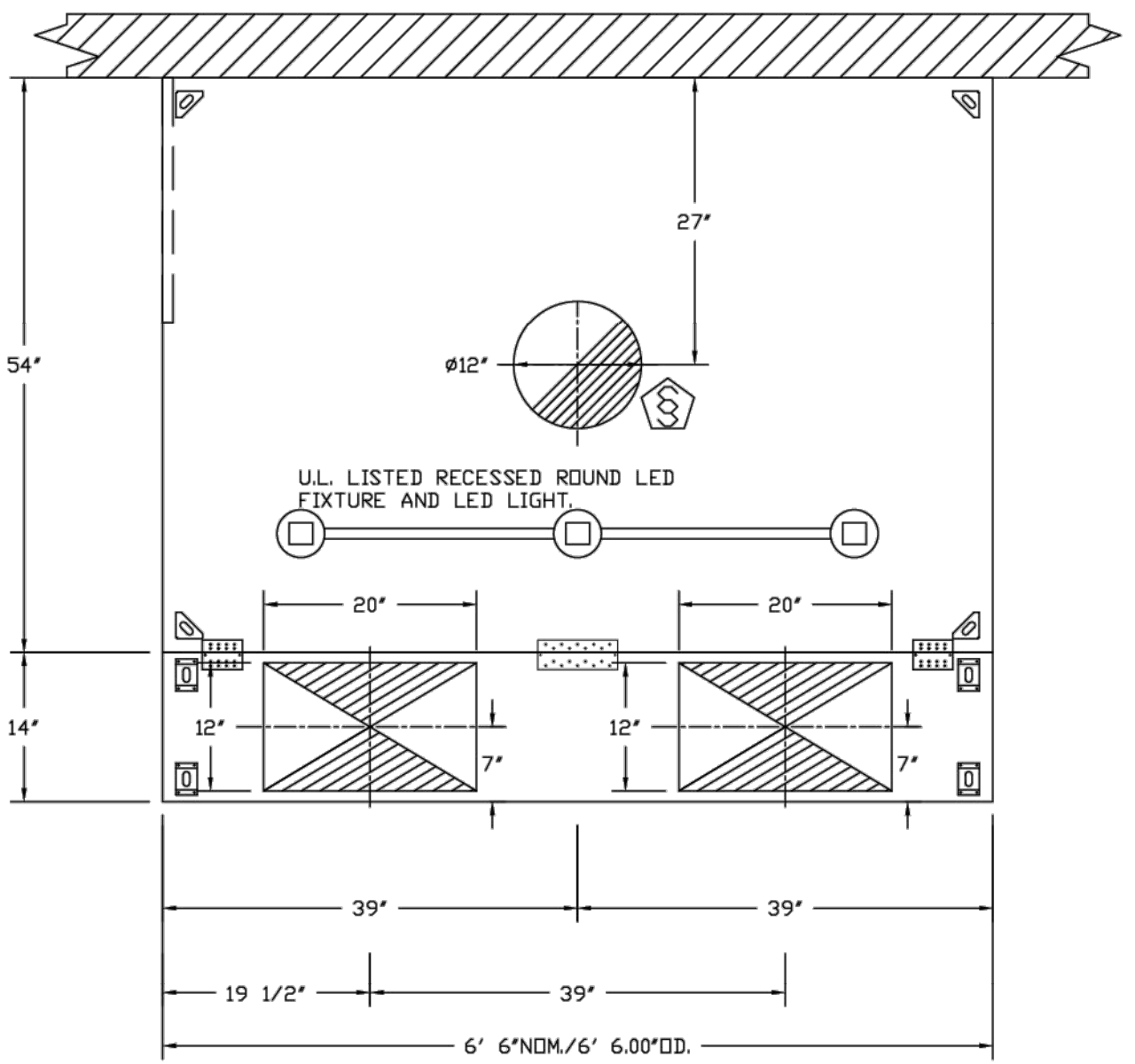
HOOD NO	TAG	FIELD WRAPPER	18.00" HIGH	FRONT, LEFT.	OPTION
1	HD-1	LEFT QUARTER END PANEL	23" TOP WIDTH, 0" BOTTOM WIDTH, 23" HIGH	430 SS.	
		FIELD WRAPPER	18.00" HIGH	FRONT, LEFT, RIGHT.	
2	HD-2	RIGHT QUARTER END PANEL	23" TOP WIDTH, 0" BOTTOM WIDTH, 23" HIGH	430 SS.	
		LEFT QUARTER END PANEL	23" TOP WIDTH, 0" BOTTOM WIDTH, 23" HIGH	430 SS.	

PERFORATED SUPPLY PLENUM(S)

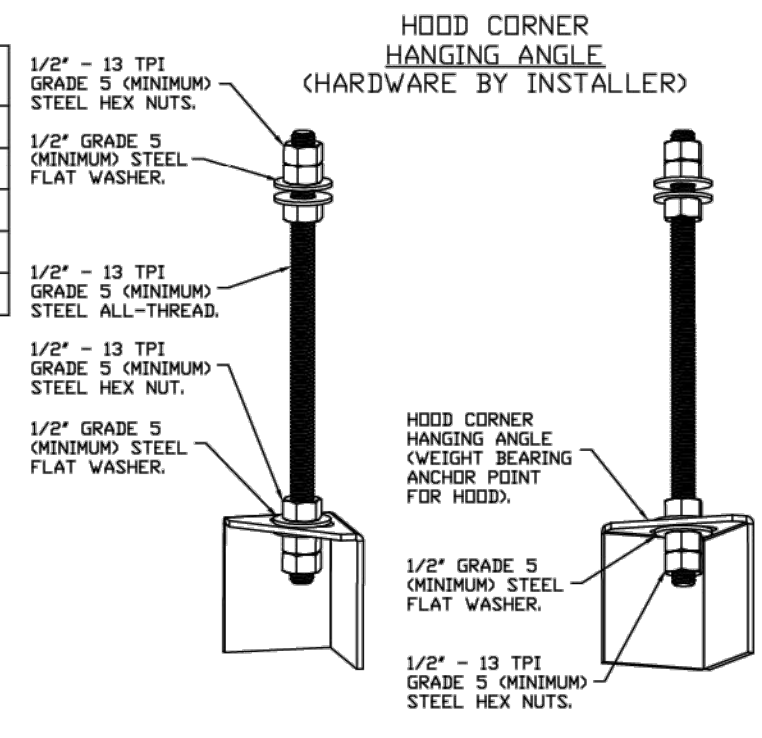
HOOD NO	TAG	POS	LENGTH	WIDTH	HEIGHT	TYPE	RISER(S)			
							WIDTH	LENG	DIA	CFM
1	HD-1	Front	78"	14"	6"	MJA	12"	20"	486	0.131'
						MJA	12"	20"	486	0.131'
2	HD-2	Front	96"	14"	6"	MJA	8"	36"	600	0.162'
						MJA	8"	36"	600	0.162'



PLAN VIEW - HOOD #2 (HD-2)
 8' 0.00" LONG 6624VHB-G-PSP-F-ND

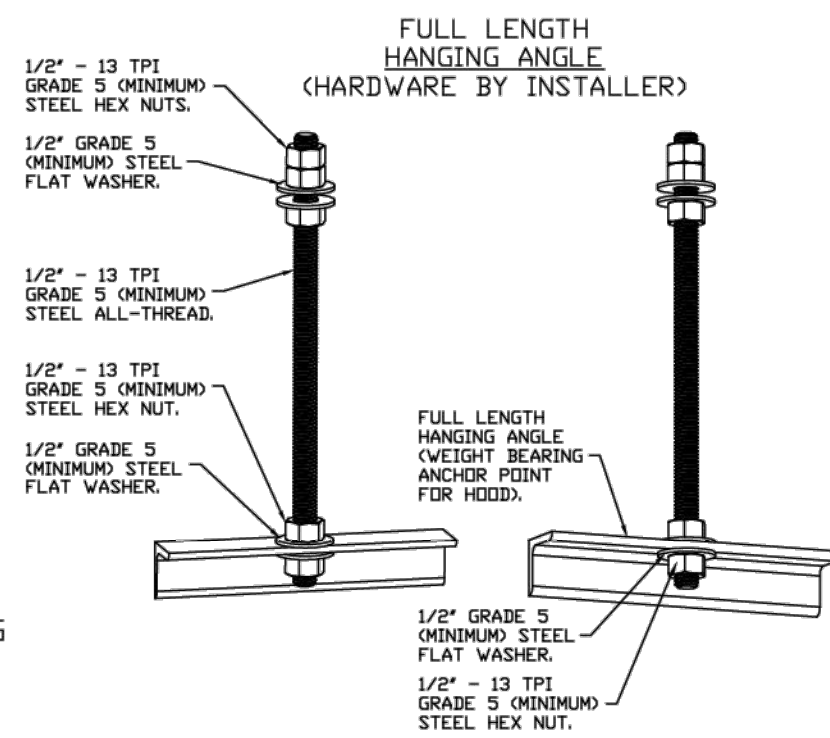


PLAN VIEW - HOOD #1 (HD-1)
 6' 6.00" LONG 5424VHB-G-PSP-F-ND



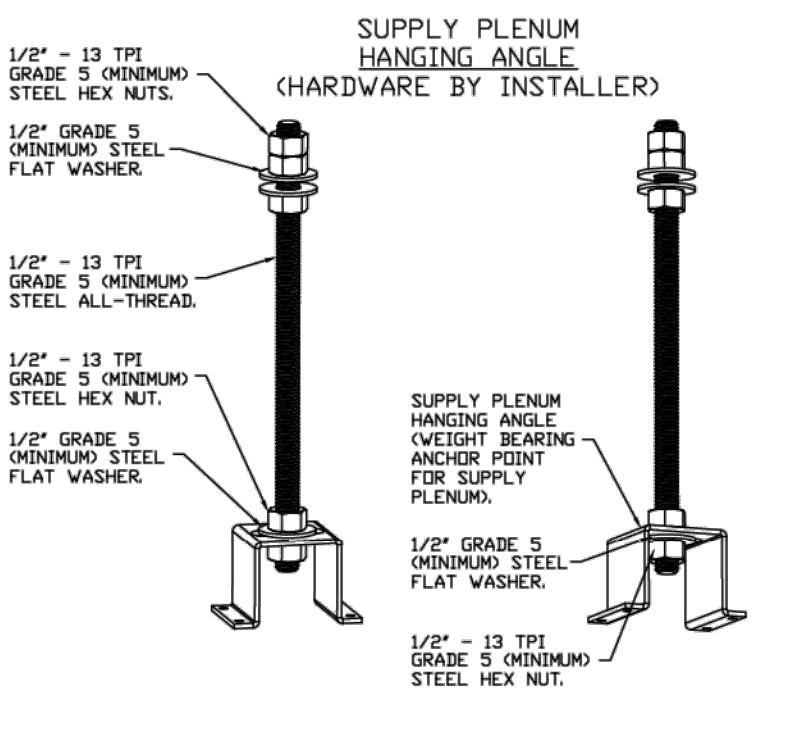
ASSEMBLY INSTRUCTIONS

HANGING ANGLE MUST BE SUPPORTED WITH 1/2" - 13 TPI GRADE 5 (MINIMUM) ALL-THREAD. SANDWICH HANGING ANGLES AND CEILING ANCHOR POINTS WITH 1/2" GRADE 5 (MINIMUM) STEEL FLAT WASHERS AND 1/2" - 13 TPI GRADE 5 (MINIMUM) HEX NUTS AS SHOWN. MUST USE DOUBLED HEX NUT CONFIGURATION BENEATH HOOD HANGING ANGLES AND ABOVE CEILING ANCHORS. MAINTAIN 1/4" OF EXPOSED THREADS BENEATH BOTTOM HEX NUT. TORQUE ALL HEX NUTS TO 57 FT-LBS.



ASSEMBLY INSTRUCTIONS

HANGING ANGLE MUST BE SUPPORTED WITH 1/2" - 13 TPI GRADE 5 (MINIMUM) ALL-THREAD. SANDWICH HANGING ANGLES AND CEILING ANCHOR POINTS WITH 1/2" GRADE 5 (MINIMUM) STEEL FLAT WASHERS AND 1/2" - 13 TPI GRADE 5 (MINIMUM) HEX NUTS AS SHOWN. MUST USE DOUBLED HEX NUT CONFIGURATION ABOVE CEILING ANCHORS. SINGLE HEX NUT BENEATH HANGING ANGLE IS ACCEPTABLE FOR FULL LENGTH HANGING ANGLES. MAINTAIN 1/4" OF EXPOSED THREADS BENEATH BOTTOM HEX NUT. TORQUE ALL HEX NUTS TO 57 FT-LBS.



ASSEMBLY INSTRUCTIONS

HANGING ANGLE MUST BE SUPPORTED WITH 1/2" - 13 TPI GRADE 5 (MINIMUM) ALL-THREAD. SANDWICH HANGING ANGLES AND CEILING ANCHOR POINTS WITH 1/2" GRADE 5 (MINIMUM) STEEL FLAT WASHERS AND 1/2" - 13 TPI GRADE 5 (MINIMUM) HEX NUTS AS SHOWN. MUST USE DOUBLED HEX NUT CONFIGURATION ABOVE CEILING ANCHORS. SINGLE HEX NUT BENEATH HANGING ANGLE IS ACCEPTABLE FOR PSP HANGING ANGLES. MAINTAIN 1/4" OF EXPOSED THREADS BENEATH BOTTOM HEX NUT. TORQUE ALL HEX NUTS TO 57 FT-LBS.

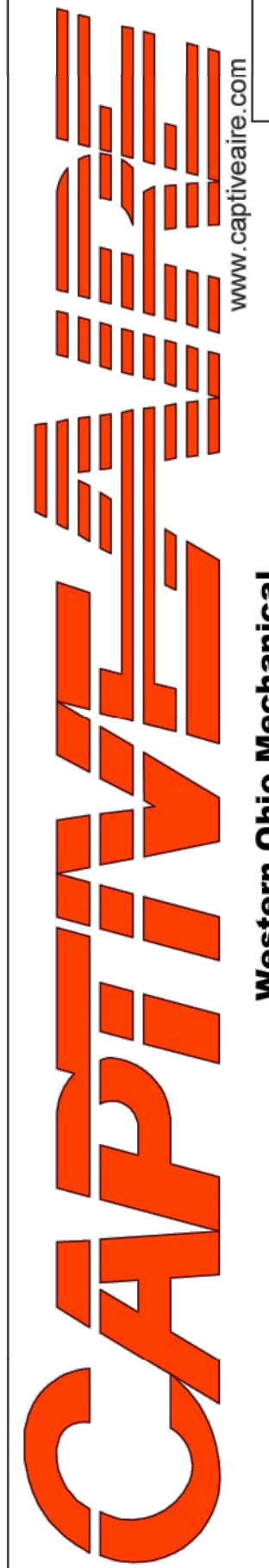
SYSTEM DESIGN VERIFICATION (SDV)

IF ORDERED, CAS SERVICE WILL PERFORM A SYSTEM DESIGN VERIFICATION (SDV) ONCE ALL EQUIPMENT HAS HAD A COMPLETE START UP PER THE OPERATION AND INSTALLATION MANUAL. TYPICALLY, THE SDV WILL BE PERFORMED AFTER ALL INSPECTIONS ARE COMPLETE.

ANY FIELD RELATED DISCREPANCIES THAT ARE DISCOVERED DURING THE SDV WILL BE BROUGHT TO THE ATTENTION OF THE GENERAL CONTRACTOR AND CORRESPONDING TRADES ON SITE. THESE ISSUES WILL BE DOCUMENTED AND FORWARDED TO THE APPROPRIATE SALES OFFICE. IF CAS SERVICE HAS TO RESOLVE A DISCREPANCY THAT IS A FIELD ISSUE, THE GENERAL CONTRACTOR WILL BE NOTIFIED AND BILLED FOR THE WORK. SHOULD A RETURN TRIP BE REQUIRED DUE TO ANY FIELD RELATED DISCREPANCY THAT CANNOT BE RESOLVED DURING THE SDV, THERE WILL BE ADDITIONAL TRIP CHARGES.

DURING THE SDV, CAS SERVICE WILL ADDRESS ANY DISCREPANCY THAT IS THE FAULT OF THE MANUFACTURER. SHOULD A RETURN TRIP BE REQUIRED, THE GENERAL CONTRACTOR AND APPROPRIATE SALES OFFICE WILL BE NOTIFIED. THERE WILL BE NO ADDITIONAL CHARGES FOR MANUFACTURER DISCREPANCIES.

REVISIONS	
DESCRIPTION	DATE



Western Ohio Mechanical
 11503 Springfield Pike, Cincinnati, OH, 45246
 PHONE: (513) 275 - 4886 FAX: 9196168748 EMAIL: reg133@captivaire.com

PopUp Bagels - Nashville, TN
 NASHVILLE, TN, 37203

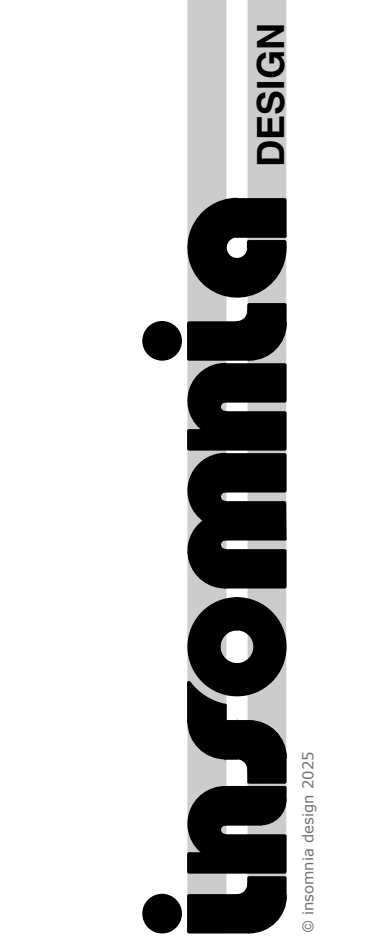
DATE: 7/7/2025
DWG.#: 7620921
DRAWN BY: grantthoman
SCALE: 3/4" = 1'-0"
MASTER DRAWING

SHEET NO.
 1



515 Monmouth Street, Suite 201
 Newport, KY 41071 (859) 261-0595

PopUp Bagels - Gulch Crossing
 226 11th Ave S #6
 Nashville, TN 37203

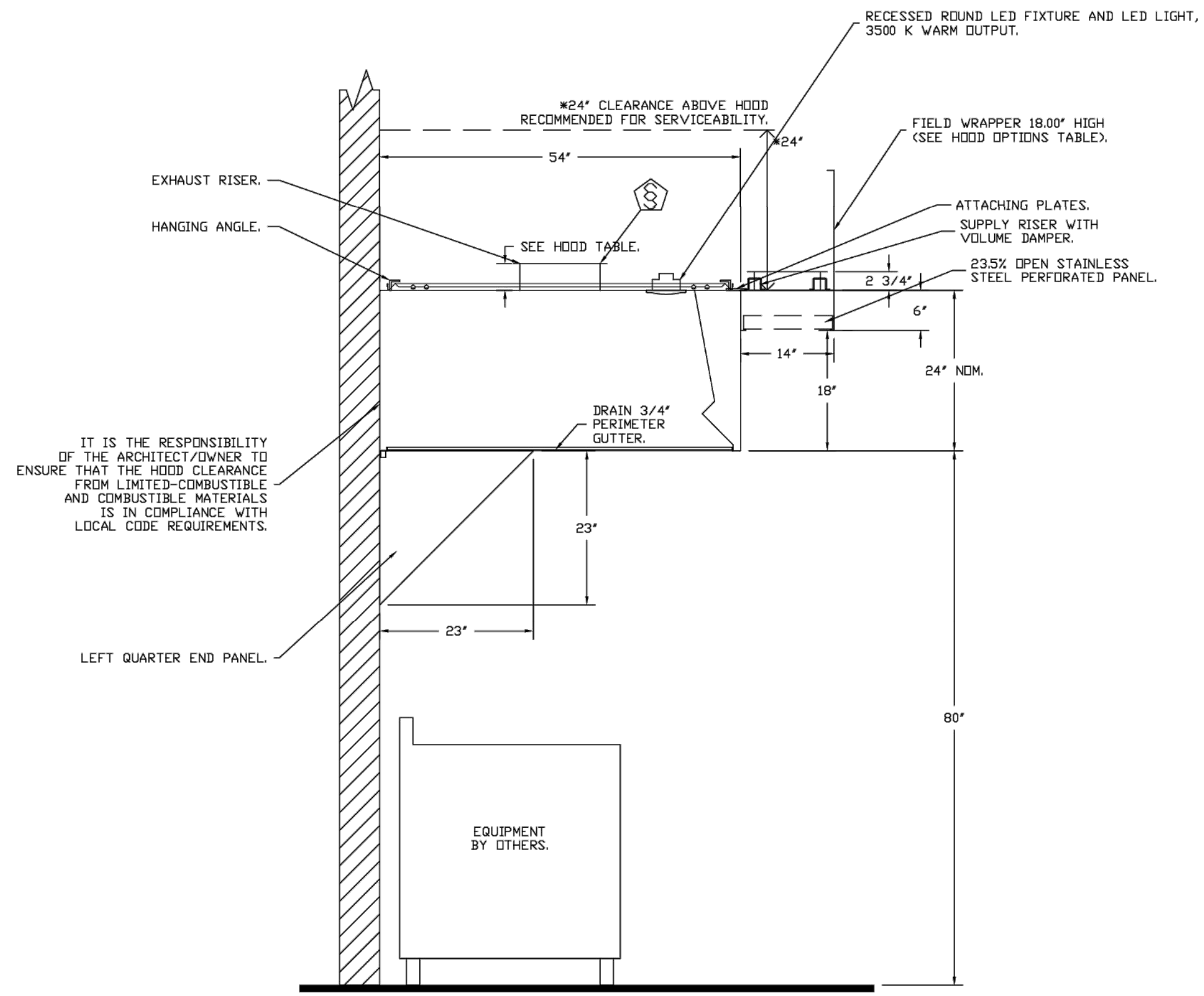


20 AUGUST 2025
 Permit

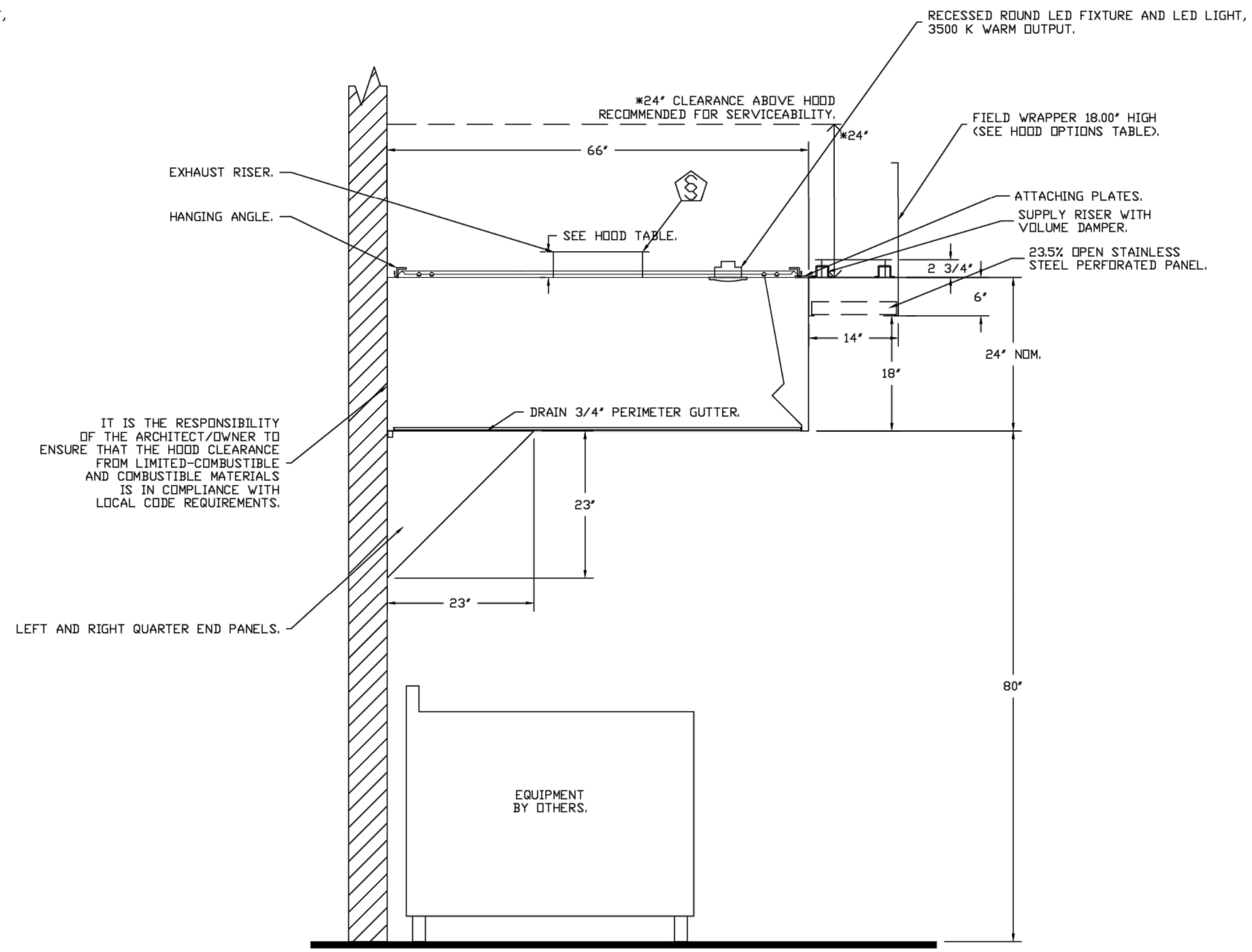
MECH. DETAILS



Z:\RTM Project Directory\RTM Projects\Insomnia Design - EB0323\5.EB0323.4006 - Pop Up Bagels - The Gulch - Nashville - Construction Documents\REF-AFI.dwg - Model - Plot Date/Time: Aug 19, 2025-2:16pm - By: m.perry
 THESE DRAWINGS AND SPECIFICATIONS ARE NOT AUTHORIZED TO BE USED AS CONTRACT DOCUMENTS. THESE DRAWINGS HAVE BEEN PREPARED TO DEMONSTRATE COMPLIANCE WITH APPLICABLE CODES, AND ARE INTENDED TO PROVIDE THE AUTHORITIES HAVING JURISDICTION WITH INFORMATION TO DETERMINE CODE COMPLIANCE. THE INSTALLING CONTRACTOR IS RESPONSIBLE TO ENSURE THAT MEANS, METHODS, AND MATERIALS USED IN CONSTRUCTION ARE INSTALLED IN ACCORDANCE WITH ANY CONTRACTUAL AGREEMENT THAT MAY EXIST WITH AN OWNER, CONSTRUCTION MANAGER, GENERAL CONTRACTOR, ETC. RTM ACCEPTS NO RESPONSIBILITY OR LIABILITY FOR THE COMPLIANCE OR CONDITION OF EXISTING EQUIPMENT AND WIRING.



SECTION VIEW - MODEL 5424VHB-G-PSP-F-ND
 HOOD - #1 (HD-1)



SECTION VIEW - MODEL 6624VHB-G-PSP-F-ND
 HOOD - #2 (HD-2)

REVISIONS	
DESCRIPTION	DATE

CAPTIVE

Western Ohio Mechanical

11503 Springfield Pike, Cincinnati, OH, 45246 PHONE: (513) 275-4688 FAX: 9195168748 EMAIL: reg133@captiveme.com

www.captiveme.com

PopUp Bagels - Nashville, TN
 NASHVILLE, TN, 37203

DATE: 7/7/2025
 DWG.#: 7620921
 DRAWN BY: grant.honan
 SCALE: 3/4" = 1'-0"
 MASTER DRAWING

SHEET NO.
 2



PopUp Bagels - Gulch Crossing
 226 11th Ave S #6
 Nashville, TN 37203

insomnia DESIGN

20 AUGUST 2025
 Permit

MECH. DETAILS



Z:\RTM Project Directory\RTM Projects\Insomnia Design - EB0323\25.EB0323.4006 - Pop Up Bagels - The Gulch - Nashville - TN\Project\Construction Documents\REF-AFI.dwg - Model. Plot Date/Time: Aug 19, 2025-2:16pm - By: m.perry
 THESE DRAWINGS AND SPECIFICATIONS ARE NOT AUTHORIZED TO BE USED AS CONTRACT DOCUMENTS. THESE DRAWINGS HAVE BEEN PREPARED TO DEMONSTRATE COMPLIANCE WITH APPLICABLE CODES, AND ARE INTENDED TO PROVIDE THE AUTHORITIES HAVING JURISDICTION WITH INFORMATION TO DETERMINE CODE COMPLIANCE. THE INSTALLING CONTRACTOR IS RESPONSIBLE TO ENSURE THAT MEANS, METHODS, AND MATERIALS USED IN CONSTRUCTION ARE INSTALLED IN ACCORDANCE WITH ANY CONTRACTUAL AGREEMENT THAT MAY EXIST WITH AN OWNER, CONSTRUCTION MANAGER, GENERAL CONTRACTOR, ETC. RTM ACCEPTS NO RESPONSIBILITY OR LIABILITY FOR THE COMPLIANCE OR CONDITION OF EXISTING EQUIPMENT AND WIRING.

EXHAUST FAN INFORMATION - JOB#7620921

FAN UNIT NO	TAG	QTY	FAN UNIT MODEL #	MANUFACTURER	CFM	ESP	RPM	MOTOR ENCL	HP	BHP	PHASE	VOLT	FLA	WEIGHT (LBS)	SONES
1		1	SIF15DD-HE	CAPTIVEAIRE	2175	1.000	1649	TEAD-ECM	1.000	0.7910	1	115	11.6	229	14.2

FAN ACCESSORIES

FAN UNIT NO	TAG	EXHAUST				SUPPLY									
		GREASE CUP	GRAVITY DAMPER	WALL MOUNT	SIDE DISCHARGE	GRAVITY DAMPER	MOTORIZED DAMPER	WALL MOUNT							
1			YES												

REVISIONS	
DESCRIPTION	DATE

Western Ohio Mechanical
 11503 Springfield Pike, Cincinnati, OH, 45246 PHONE: (513) 275-4888 FAX: 9195168748 EMAIL: reg133@captivair.com

engineering consultants
 515 Monmouth Street, Suite 201
 Newport, KY 41071 (859)261-0585

PopUp Bagels - Nashville, TN
 NASHVILLE, TN, 37203

DATE: 7/7/2025

DWG.#: 7620921

DRAWN BY: grantthoman

SCALE: 3/4" = 1'-0"

MASTER DRAWING

SHEET NO.
3

20 AUGUST 2025
 Permit

MECH. DETAILS

M203

insomnia DESIGN

PopUp Bagels - Gulch Crossing

226 11th Ave S #6
 Nashville, TN 37203

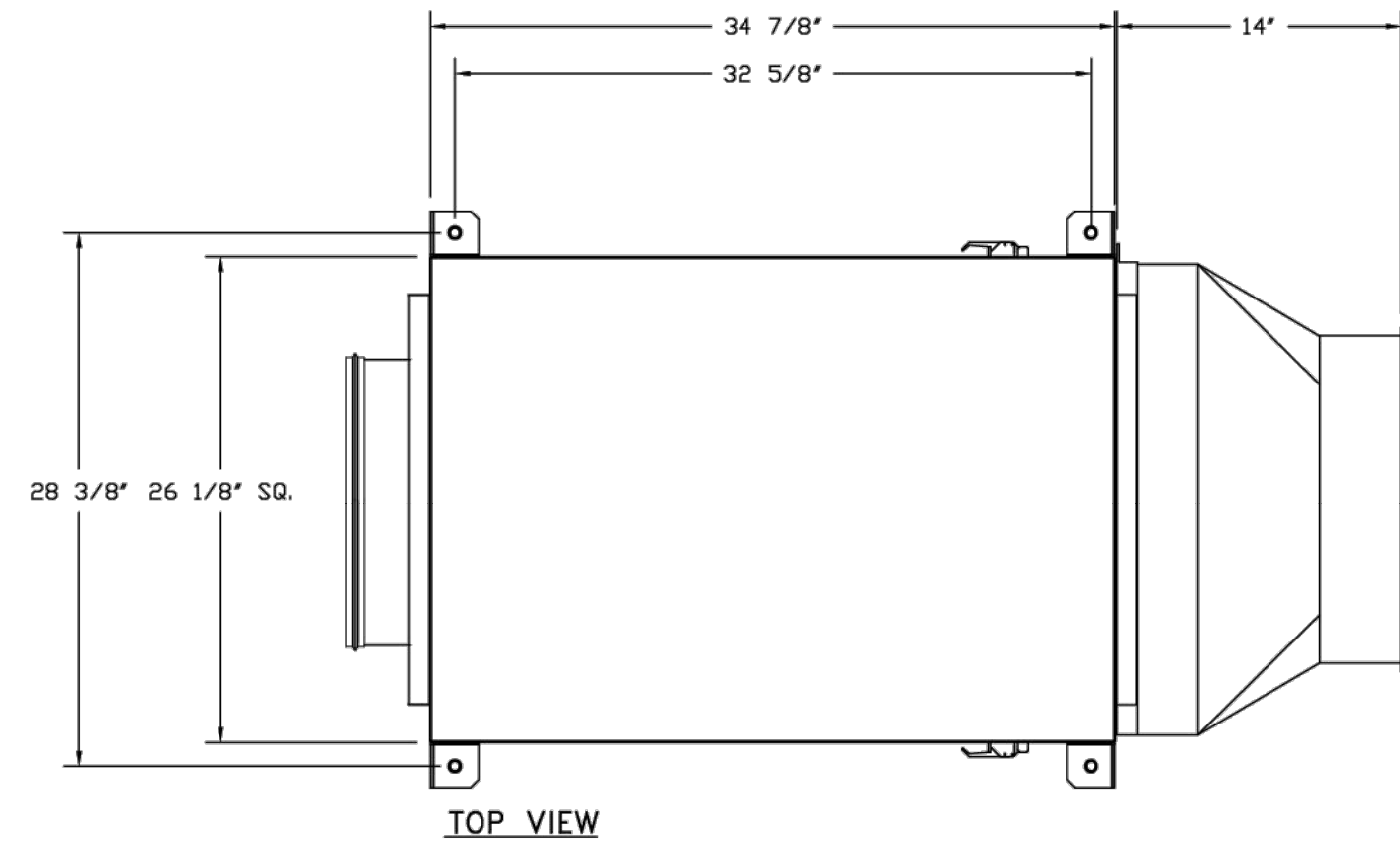


Z:\r\rm Project Directory\RTM Projects\Insomnia Design - EB0323\25.EB0323-4006 - Pop Up Bagels - The Gulch - Nashville - TN\Project\Construction Documents\REF-AFI.dwg - Model: Plot Date/Time: Aug 19, 2025-2:16pm - By: m.perry
 THESE DRAWINGS AND SPECIFICATIONS ARE NOT AUTHORIZED TO BE USED AS CONTRACT DOCUMENTS. THESE DRAWINGS HAVE BEEN PREPARED TO DEMONSTRATE COMPLIANCE WITH APPLICABLE CODES, AND ARE INTENDED TO PROVIDE THE AUTHORITIES HAVING JURISDICTION WITH INFORMATION TO DETERMINE CODE COMPLIANCE. THE INSTALLING CONTRACTOR IS RESPONSIBLE TO ENSURE THAT MEANS, METHODS, AND MATERIALS USED IN CONSTRUCTION ARE INSTALLED IN ACCORDANCE WITH ANY CONTRACTUAL AGREEMENT THAT MAY EXIST WITH AN OWNER, CONSTRUCTION MANAGER, GENERAL CONTRACTOR, ETC. RTM ACCEPTS NO RESPONSIBILITY OR LIABILITY FOR THE COMPLIANCE OR CONDITION OF EXISTING EQUIPMENT AND WIRING.

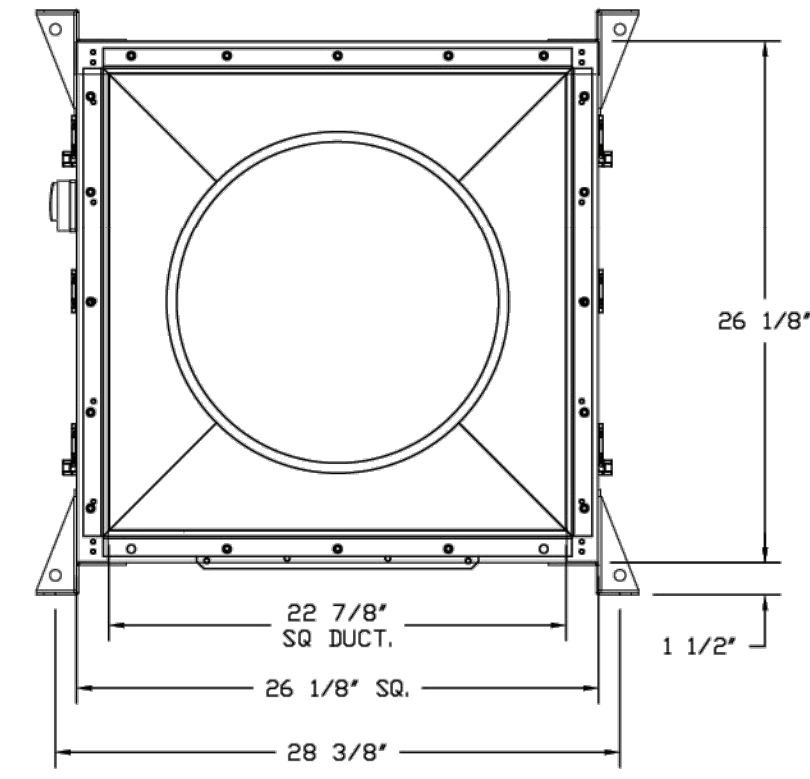
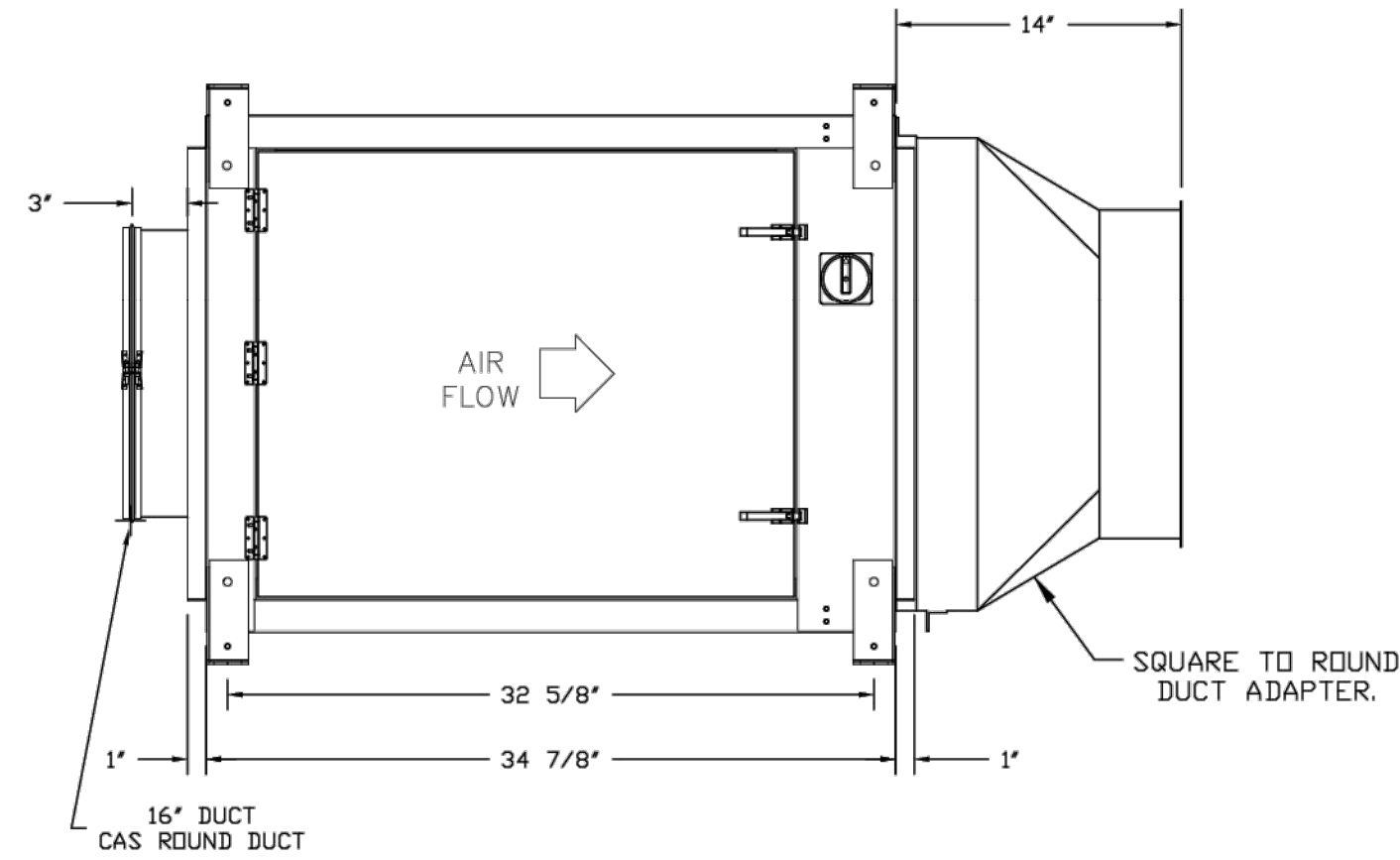
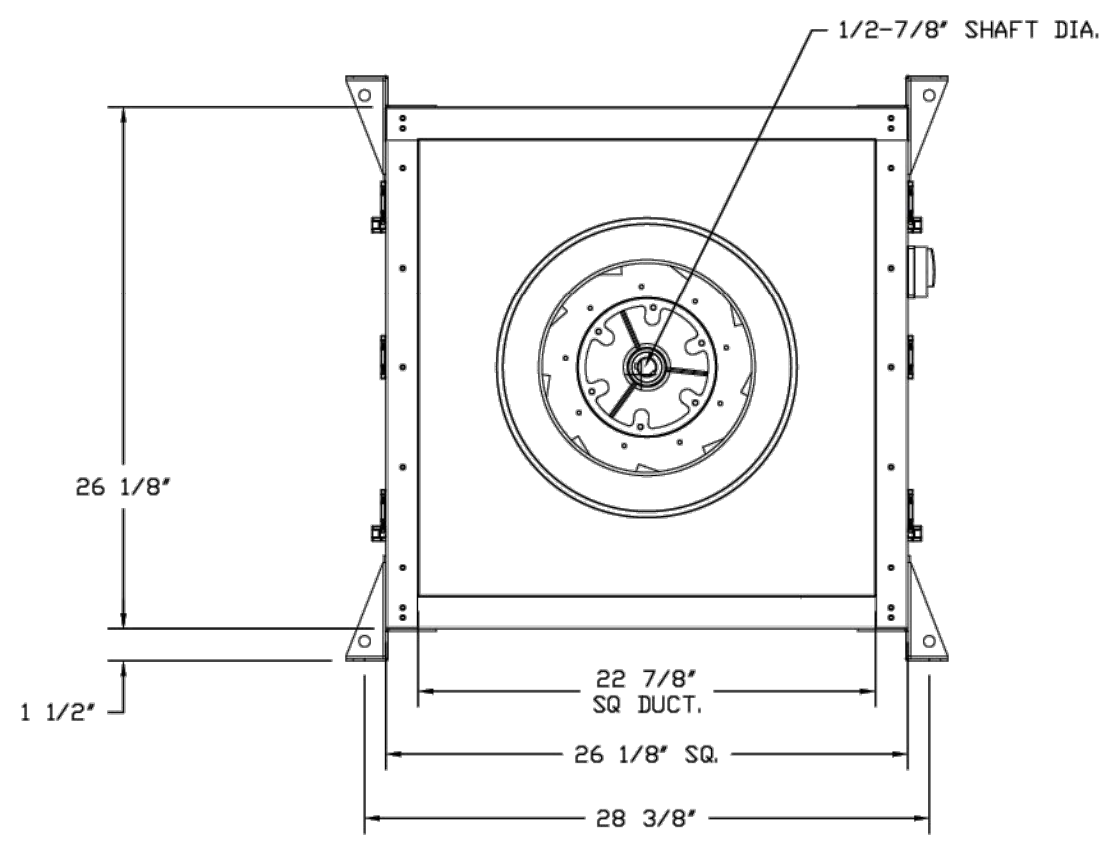
FAN OPTIONS

FAN UNIT NO	TAG	QTY	DESCRIPTION
1		1	SIF 15- SS LWD SP STRAIGHT DISCHARGE- SQUARE TO ROUND DISCHARGE ADAPTER
		1	SIF15 - INLET - STANDARD 16" DUCT CONNECTION
		1	SIF - HORIZONTAL OVERHEAD MOUNT - PRE-INSTALLED MOUNTS (11-36)
		1	I 23-BDD DAMPER
		1	HANGING SPRING VIBRATION ISOLATORS (SET OF 4), FOR INDOOR OR OUTDOOR USE WITH SQUARE INLINE FANS (HSA125)
		1	ECM WIRING PACKAGE - PWM SIGNAL FROM ECPM03 PREWIRE (TELCO MOTOR), CCW ROTATION
		1	2 YEAR PARTS WARRANTY

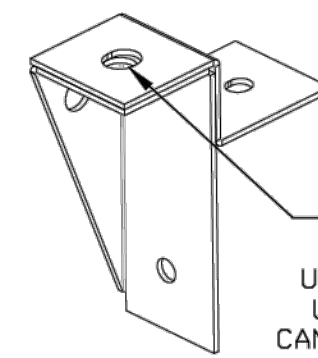
FAN #1 SIF15DD-HF - EXHAUST FAN



TOP VIEW



NOTES:
 - DWXXFRISER USED WHEN CONNECTING TO STANDARD DUCT.
 - DWXXFRISERS ARE INSTALLED ON THE INTAKE AND/OR DISCHARGE SIDES.



UNIVERSAL MOUNTING BRACKET

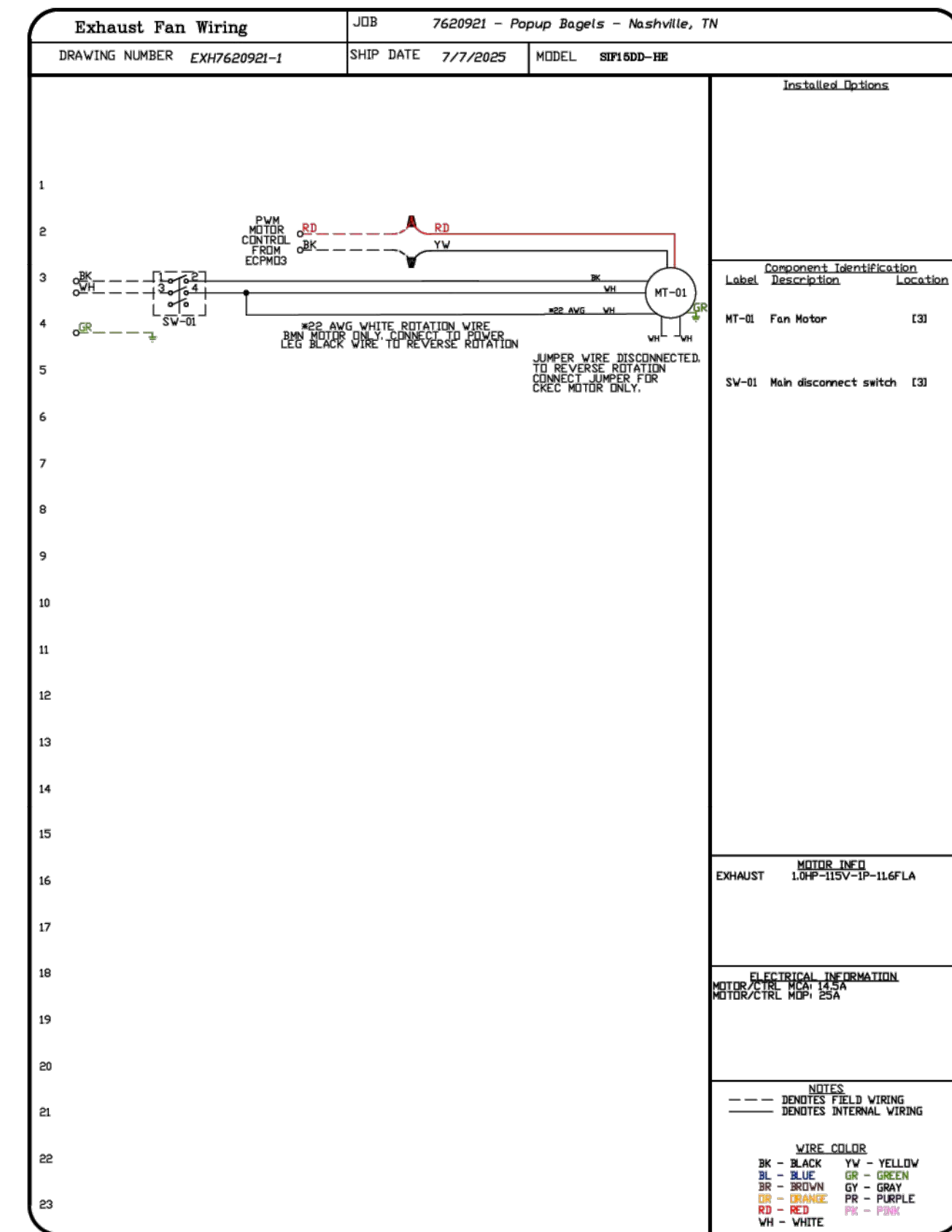
1/2" DIA. THREADED ROD ONLY
 5/60" DIA. MOUNTING HOLES.
 USED WITH CEILING VIBRATION ISOLATORS.
 USED WITH FLOOR VIBRATION ISOLATORS.
 CAN BE RELOCATED IN THE FIELD AS NEEDED.

FEATURES:

- DIRECT DRIVE CONSTRUCTION (NO BELTS/PULLEYS).
- TWO ACCESS DOORS FOR EASY ACCESS.
- BACKWARD INCLINED NON-OVERLOADING WHEELS.
- UL705 LISTING.
- AMCA AIR & SOUND CERTIFIED.
- THERMAL OVERLOAD PROTECTION (SINGLE PHASE).
- NEMA 3R SAFETY DISCONNECT SWITCH.

OPTIONS

- SIF 15- SS LWD SP STRAIGHT DISCHARGE- SQUARE TO ROUND DISCHARGE ADAPTER.
- SIF15 - INLET - STANDARD 16" DUCT CONNECTION.
- SIF - HORIZONTAL OVERHEAD MOUNT - PRE-INSTALLED MOUNTS (11-36).
- I 23-BDD DAMPER.
- HANGING SPRING VIBRATION ISOLATORS (SET OF 4), FOR INDOOR OR OUTDOOR USE WITH SQUARE INLINE FANS (HSA125).
- ECM WIRING PACKAGE - PWM SIGNAL FROM ECPM03 PREWIRE (TELCO MOTOR), CCW ROTATION.
- 2 YEAR PARTS WARRANTY.



REVISIONS

DESCRIPTION	DATE

CAPTIVE
 www.captiveair.com
 Western Ohio Mechanical
 11503 Springfield Pike, Cincinnati, OH, 45248 PHONE: (513) 275-4888 FAX: 9195168748 EMAIL: reg133@captiveair.com

PopUp Bagels - Nashville, TN
 NASHVILLE, TN, 37203

DATE: 7/7/2025
DWG.#: 7620921
DRAWN BY: grant.homan
SCALE: 3/4" = 1'-0"
MASTER DRAWING

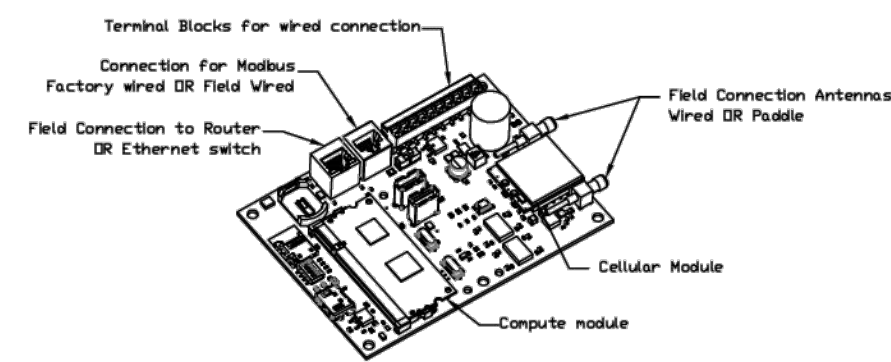
SHEET NO.
 4

insomnia DESIGN
 engineering consultants
 515 Monmouth Street, Suite 201
 Newport, KY 41071 (859)261-0585
 226 11th Ave S #6
 Nashville, TN 37203
 20 AUGUST 2025
 Permit
 MECH. DETAILS
M204

Z:\RTM Project Directory\RTM Projects\Insomnia Design - EB0323\55.EB0323.4066 - Pop Up Bagels - The Gulch - Nashville, TN\Project\Construction Documents\REF-AFI.dwg - Model - Plot Date/Time: Aug 19, 2025-2:16pm - By: m.perry
 THESE DRAWINGS AND SPECIFICATIONS ARE NOT AUTHORIZED TO BE USED AS CONTRACT DOCUMENTS. THESE DRAWINGS HAVE BEEN PREPARED TO DEMONSTRATE COMPLIANCE WITH APPLICABLE CODES, AND ARE INTENDED TO PROVIDE THE AUTHORITIES HAVING JURISDICTION WITH INFORMATION TO DETERMINE CODE COMPLIANCE. THE INSTALLING CONTRACTOR IS RESPONSIBLE TO ENSURE THAT MEANS, METHODS, AND MATERIALS USED IN CONSTRUCTION ARE INSTALLED IN ACCORDANCE WITH ANY CONTRACTUAL AGREEMENT THAT MAY EXIST WITH AN OWNER, CONSTRUCTION MANAGER, GENERAL CONTRACTOR, ETC. RTM ACCEPTS NO RESPONSIBILITY OR LIABILITY FOR THE COMPLIANCE OR CONDITION OF EXISTING EQUIPMENT AND WIRING.

ELECTRICAL PACKAGE - JOB#7620921

NO	TAG	PACKAGE #	LOCATION	SWITCHES		OPTION	FANS CONTROLLED				
				LOCATION	QUANTITY		TYPE	HP	VOLT	FLA	
1		SC-11011028	WALL MOUNT IN SS BOX	SS WALL MOUNT BOX	1 LIGHT 1 FAN	SMART CONTROLS BASIC W/ RELAY ON/OFF WITH SUPPLY	EXHAUST	1	1.000	115	11.6

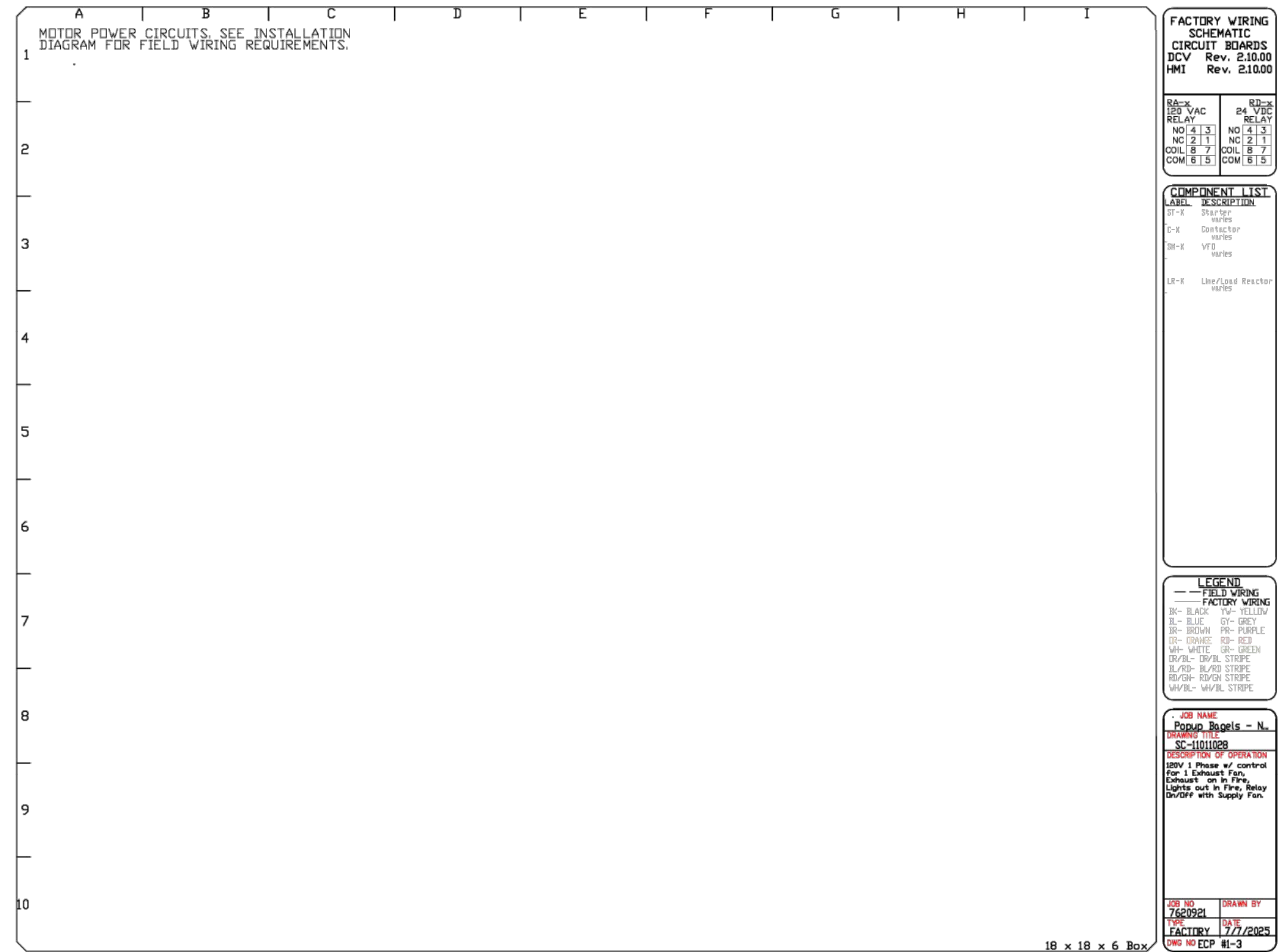
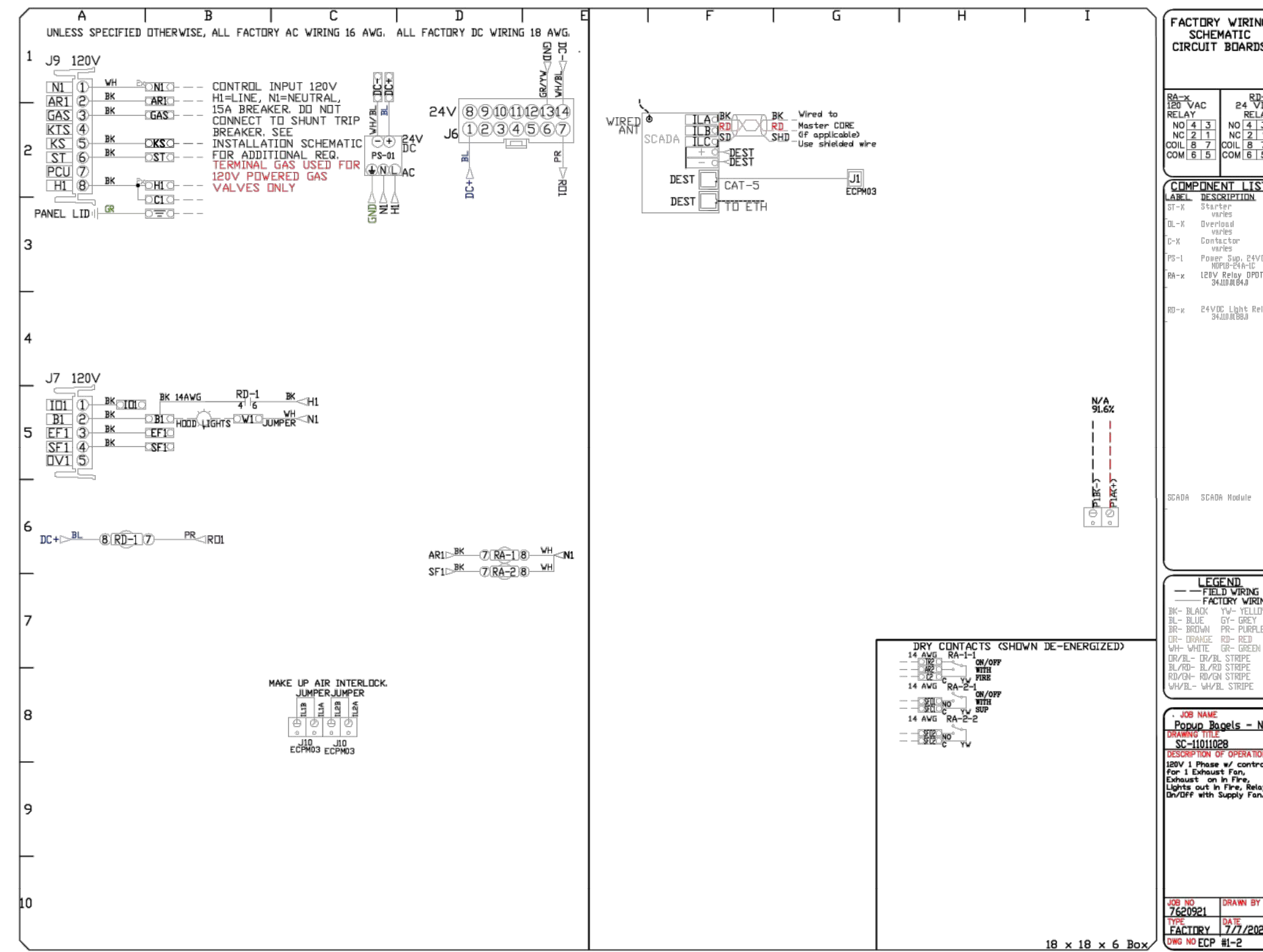
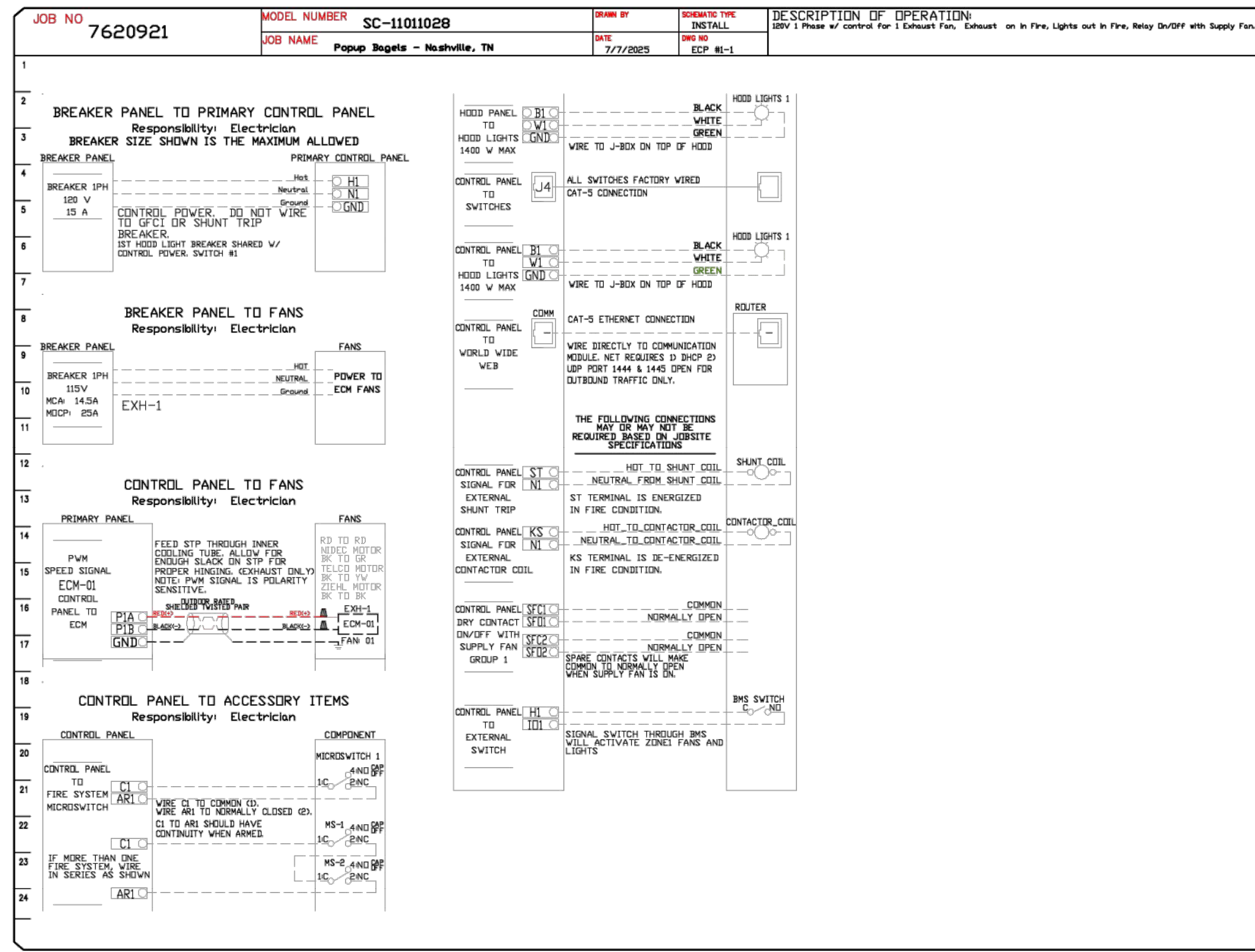


CASlink Monitor and Control

— Hood control panel to support communications to cloud-based Building Management System.
 — Hood Control Panel to allow cloud-based Building Management System to monitor real time parameters outlined as MONITOR in the points list.
 — Hood Control Panel to allow cloud-based Building Management System to control parameters outlined as CONTROL in the points list.
 — Hood Control Panel to allow cloud-based Building Management System to implement SYSTEM ECONOMIZER control strategies for fully integrated Building Management.

MONITORING AND CONTROL POINTS LIST

DCV Packages	Function	SC Packages	Function
Room Temperature	MONITOR	Room Temperature(s)	MONITOR
Duct Temperature(s)	MONITOR	Duct Temperature(s)	MONITOR
Mill Discharge Temperature	MONITOR	Mill Discharge Temperature	MONITOR
Blotches RTU Discharge Temperature	MONITOR	Blotches RTU Discharge Temperature	MONITOR
Fan Speed	MONITOR	Controler Fan(s)	MONITOR
Fan Amps	MONITOR	Fan Faults	MONITOR
Fan Power	MONITOR	Fan Status	MONITOR
VFD Faults	MONITOR	PCU Faults	MONITOR
Controler Faults	MONITOR	PCU Filter Clog Percentages	MONITOR
Fan Faults	MONITOR	Fan Condition	MONITOR
Fan Status	MONITOR	CORE Fire System	MONITOR
PCU Faults	MONITOR	Building Pressures	MONITOR
PCU Filter Clog Percentages	MONITOR	Fans Status(s)	MONITOR & CONTROL
Fire Condition	MONITOR	Lights Status(s)	MONITOR & CONTROL
CORE Fire System	MONITOR	Flush Button	MONITOR & CONTROL
Building Pressures	MONITOR		
Prep Zone Status	MONITOR & CONTROL		
Lights Status	MONITOR & CONTROL		
Flush Button	MONITOR & CONTROL		



REVISIONS

NO.	DESCRIPTION	DATE

CAPTIVE

Western Ohio Mechanical

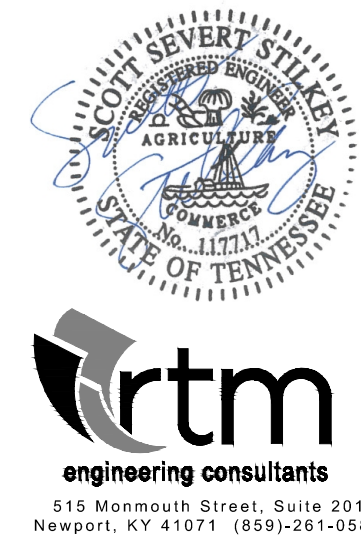
11603 Springfield Pike, Cincinnati, OH, 45246 PHONE: (513) 275-4986 FAX: 9195168749 EMAIL: reg133@captiveme.com

www.captive.com

PopUp Bagels - Nashville, TN
 NASHVILLE, TN, 37203

DATE: 7/7/2025
 DWG.#: 7620921
 DRAWN BY: grant.homan
 SCALE: 3/4" = 1'-0"
 MASTER DRAWING

SHEET NO. 5



insomnia DESIGN

PopUp Bagels - Gulch Crossing

226 11th Ave S #6
 Nashville, TN 37203

20 AUGUST 2025
 Permit

MECH. DETAILS

M205