



PROJECT TEAM

OWNER
ELLIOTT ELECTRIC SUPPLY
2526 N STALLINGS DR
NACOGDOCHES, TX 75964
www.elliotelectric.com

ARCHITECT
ELEMENT ARCHITECTS, LLC.
1250 WOOD BRANCH PARK DR,
SUITE 480
HOUSTON, TX 77079
(713) 874 0775
www.ElementArchitects.com

MEP
JORDAN & SKALA ENGINEERS
1375 RICHMOND AVE., SUITE 300
HOUSTON, TX 77042
(281) 617 3200

HIGH PILE
ACTIVE INDUSTRIAL FIRE PROTECTION, LLC
13100 WORTHAM CENTER DR., 3RD FLOOR
HOUSTON, TX 77065
(713) 491 6539

FLOOR PLAN NOTES

- REFER TO THE DETAILS, SCHEDULES, GENERAL NOTES, SPECIFICATIONS AND PLANS FOR ADDITIONAL REQUIREMENTS.
- REFER TO DETAILS FOR MOUNTING METHOD OF OUTDOOR EQUIPMENT.
- MAINTAIN A MINIMUM OF 2'-0" BETWEEN CONDENSING UNITS AND HEAT PUMP UNITS (OR AS INDICATED IN THE MANUFACTURER'S INSTALLATION INSTRUCTIONS IF GREATER THAN 2'-0"). MAINTAIN 6'-0" MINIMUM CLEAR (OR MANUFACTURER'S RECOMMENDATION WHICH EVER IS GREATER) FROM THE TOP AIR DISCHARGE OF THE OUTDOOR UNIT TO ANY OVERHEAD OBSTRUCTIONS. COORDINATE UNIT LOCATION TO MAINTAIN CODE REQUIRED CLEARANCES TO UNIT POWER DISCONNECT. PLACE UNITS AWAY FROM ROOF DRIP LINE.
- REFER TO ARCHITECTURAL DRAWINGS FOR EXACT LOCATION AND PLACEMENT OF OUTDOOR EQUIPMENT.
- ADJUST DUCTWORK ROUTING AND LOCATIONS AS REQUIRED TO INTERFACE BETWEEN THE SUBMITTED AND APPROVED EQUIPMENT TO BE INSTALLED AND LOCATIONS OF DUCT SHAFTS AND OPENINGS.
- MAINTAIN A MINIMUM OF 3'-0" BETWEEN OPERABLE OPENINGS INTO THE BUILDING AND ANY ENVIRONMENTAL AIR EXHAUST OUTLETS.
- MAINTAIN A MINIMUM OF 10'-0" BETWEEN MECHANICAL VENTILATION INTAKES (INCLUDING RTUs, MUAs, OAU's, ETC) AND ANY EXHAUST OUTLETS, GAS FLUES, OR PLUMBING VENTS.
- MAINTAIN A MINIMUM CLEAR AREA OF 3'-0" IN FRONT OF ALL ELECTRICAL DISCONNECTING DEVICES AND ELECTRICAL GEAR. DISCONNECTS SHALL NOT BE MOUNTED ON EQUIPMENT OR COVERHIDE EQUIPMENT NAMEPLATES.
- ALL PENETRATIONS OF THE WALLS AND ROOF SHALL BE SEALED WEATHER TIGHT.
- OBSERVE ALL MANUFACTURER'S AIRFLOW AND SERVICE CLEARANCES AND INSTALLATION, OPERATION AND MAINTENANCE INSTRUCTIONS FOR MECHANICAL EQUIPMENT.
- SPLIT SYSTEM EQUIPMENT HAS BEEN SHOWN ON THE GRADE AS PART OF THE MATCHED SYSTEM OF THE AIR HANDLER WITH ITS ASSOCIATED OUTDOOR UNIT. WHILE THE LOCATION OF THE OUTDOOR UNITS ARE APPROXIMATE ONLY, THE IMPORTANCE OF UNIT LOCATIONS IN RELATION TO THE REFRIGERANT LINE-SET ROOF HOOD (PENETRATION THRU THE WALL) IS CRITICAL FOR THE PROJECT. THE CONTRACTOR SHALL COORDINATE THE SYSTEM INSTALLATION WITH THE MANUFACTURER AND COMPLY WITH THE MANUFACTURER'S RECOMMENDATIONS FOR LONG LINE APPLICATIONS. REFRIGERANT LINE-SETS SHALL BE INSTALLED TO REDUCE THE SYSTEM'S TOTAL EQUIVALENT PIPING LENGTH AND TO MINIMIZE THE SYSTEM CAPACITY LOSSES DUE TO ELBOWS, FITTINGS, VALVES, ETC. THAT COMPRISE THE ENTIRE REFRIGERANT PIPING SYSTEM. AFTER RECEIPT OF THE APPROVED SUBMITTALS, THE CONTRACTOR IS RESPONSIBLE FOR COORDINATING THE REFRIGERANT PIPING SCHEMATICS CERTIFIED BY THE EQUIPMENT MANUFACTURER AND SUBMITTING THE REFRIGERANT PIPING DRAWINGS AS OUTLINED IN THE HVAC GENERAL NOTES.
- LINE SET ROUTING, SUPPORTS, AND STRAPS SHALL BE INSTALLED IN A NEAT AND ORDERLY FASHION. RE: GENERAL NOTES, DETAILS AND SPECIFICATIONS FOR ADDITIONAL REQUIREMENTS.
- WHERE EXPOSED REFRIGERANT PIPING EXCEEDS 6' IN LENGTH BETWEEN THE RISER BOX AND THE EQUIPMENT CONNECTION, A RIGID OR FLEXIBLE METAL ENCLOSURE OR PIPE BULB SHALL BE PROVIDED.
- ALL MECHANICAL EQUIPMENT SHALL BE LABELED WITH A 2" HIGH SEMI-RIGID PLASTIC LAMINATE NAMEPLATE WITH 1" HIGH WHITE LETTERS ON A BLACK BACKGROUND SECURELY AFFIXED TO THE EQUIPMENT. THE NAMEPLATE SHALL SHOW THE EQUIPMENT ID TAG USED ON THESE DRAWINGS. ON RESIDENTIAL PROJECTS, THE NAMEPLATE ON THE OUTDOOR EQUIPMENT SHALL CLEARLY INDICATE THE DWELLING UNIT NUMBER IT SERVES, AS WELL AS, THE EQUIPMENT ID TAG SHOWN ON THE DRAWINGS.
- COORDINATE THE ELECTRIC WALL HEATER LOCATION IN WATER RISER CLOSETS WITH ELECTRICAL, FIRE PROTECTION AND PLUMBING CONTRACTORS PRIOR TO INSTALLATION TO AVOID CONFLICTS.
- COORDINATE ALL WALL CAP, SOFFIT, AND LOUVER LOCATIONS WITH ARCHITECTURAL AND STRUCTURAL DRAWINGS.
- COORDINATE AND PROVIDE LINE-SET HOODS WITH OUTDOOR UNIT LAYOUT AND WALL STRUCTURE.
- CONDENSING AND HEAT PUMP UNITS SHALL NOT BE LOCATED WITHIN 3'-0" OF METER CENTERS. COORDINATE WITH ELECTRICAL CONTRACTOR PRIOR TO INSTALLATION.
- CONDENSING AND HEAT PUMP SHALL NOT BE LOCATED WITHIN 3'-0" OF GAS METERS. COORDINATE WITH PLUMBING CONTRACTOR PRIOR TO INSTALLATION.
- REFERENCE CIVIL SITE PLAN AND ARCHITECTURAL DRAWINGS FOR EXACT LOCATION OF WATER SERVICE ENTRY ROOMS PRIOR TO INSTALLATION OF ELECTRIC WALL HEATER.
- DWELLING UNIT TYPE (A1, B1, ETC) MATCHES AHU/HP TAG NUMBER USED ON UNIT PLANS AND IN SCHEDULE. REFERENCE DWELLING UNIT PLAN SHEETS AND DWELLING UNIT SPLIT SYSTEM SCHEDULE FOR ADDITIONAL INFORMATION.
- REFER TO AND COORDINATE WITH ARCHITECTURAL AND STRUCTURAL DRAWINGS FOR SIZES AND LOCATIONS OF FLOOR AND STRUCTURAL WALL OPENINGS. NOTIFY THE OWNER/ARCHITECT OF ANY DISCREPANCIES IN WRITING PRIOR TO ANY FURTHER WORK.

KEYNOTES

- CONNECT NEW DUCT TO EXISTING IN LOCATION SHOWN. MECHANICAL CONTRACTOR SHALL ENSURE CONNECTION BETWEEN EXISTING AND NEW DUCTWORK IS SEALED AIRTIGHT. FIELD VERIFY ALL SIZES AND LOCATIONS.
- ROUTE CONDENSATE MAIN TO NEAREST FLOOR SINK. SIZE AS INDICATED ON PLANS.
- EXISTING MECHANICAL EQUIPMENT TO REMAIN. TONNAGE FOR SYSTEM NOTED ON PLANS. MECHANICAL CONTRACTOR TO CONFIRM LOCATION AND EXISTING CONDENSATE ROUTING IS TO AN APPROVED PLUMBING RECEPTACLE.
- EXHAUST DUCT UP TO RAIN CAP. PROVIDE EQUIVALENT TO BROWN MODEL 636AL.

#	DESCRIPTION	DATE
---	-------------	------



SEAL / SIGNATURE

04/14/2025

KEY MAP

PROJECT STATUS

CONSTRUCTION DOCUMENTS

PROJECT NAME

ELLIOTT ELECTRIC SUPPLY

PROJECT ADDRESS

540 MT GALLANT ROAD
ROCK HILL, SC 29730

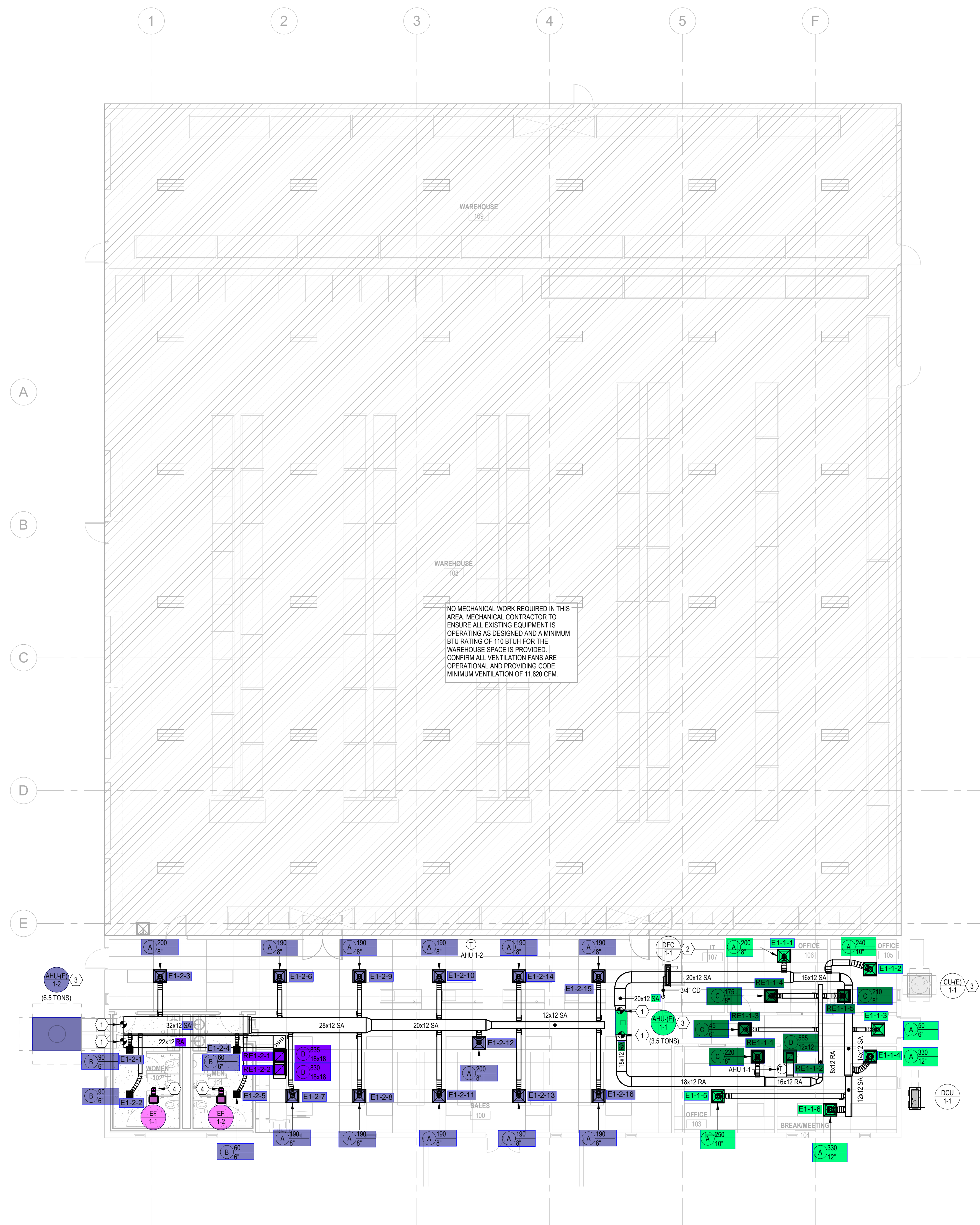
EA PROJECT NUMBER

EA25027

DATE

04/14/2025

OVERALL FLOOR PLAN



NO MECHANICAL WORK REQUIRED IN THIS AREA. MECHANICAL CONTRACTOR TO ENSURE ALL EXISTING EQUIPMENT IS OPERATING AS DESIGNED AND A MINIMUM BTU RATING OF 110 BTUH FOR THE WAREHOUSE SPACE IS PROVIDED. CONFIRM ALL VENTILATION FANS ARE OPERATIONAL AND PROVIDING CODE MINIMUM VENTILATION OF 11,820 CFM.

1 OVERALL FLOOR PLAN
Scale: 1/8" = 1'-0"

