

Jordan & Skala Engineers

Atlanta | Charlotte | Dallas | DC | Denver | Houston | Tampa

Submittal Review

Project Name: Elliot Electric - TI - Rockhill, SC

JSE Project Number: 25060102

Description

Date Received:

Date Returned:

Reviewed By: IAH

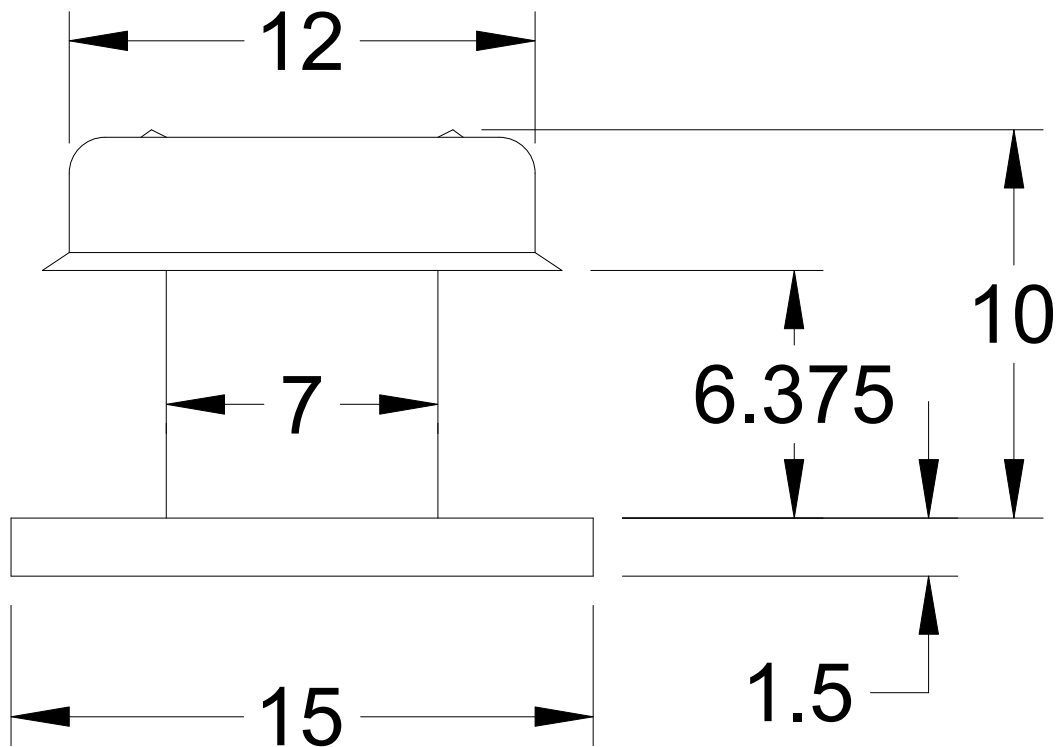
Review is for general compliance with the contract documents. Corrections and/or comments made do not relieve the contractor from compliance with contract documents. No responsibility is assumed for correctness of dimensions, details, and/or quantities. The contractor shall correlate and confirm all weights, dimensions, and electrical characteristics with other trades and disciplines and at the jobsite.

Item	Response	Comment
General	Reviewed as Noted	Provide all accessories as noted for each specific Mechanical item as noted on the plans. Note any specific exclusions, including the reason for exclusion. This comment applies to all HVAC equipment and shall be considered a comment for each specific type of equipment. Provide letter stating all accessories will be provided and note any specific exclusions, including the reason for exclusion.

RCC-7

Standard Construction Features:

- Weathertight aluminum construction
- Integral birdscreen
- Built in curb cap.



Notes: All dimensions shown are in units of in.

Model: SP-A250

Ceiling Exhaust Fan

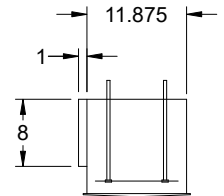
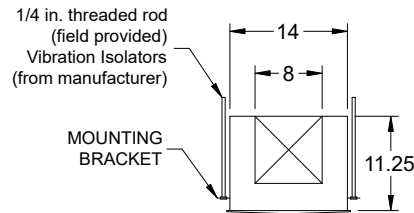
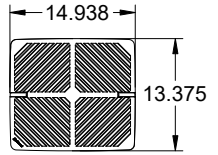
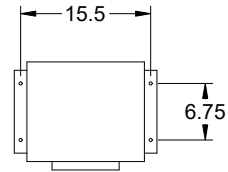
Tags: EF-1 EF-2

Standard Construction Features:

- Corrosion resistant galvanized steel scroll and housing - Sound absorbing insulation - White designer non-yellowing grille - Rectangular outlet duct collar with integral spring loaded backdraft damper - Double inlet forward curved wheel - Plug type disconnect - Adjustable mounting brackets - Field rotatable discharge

Selected Options & Accessories:

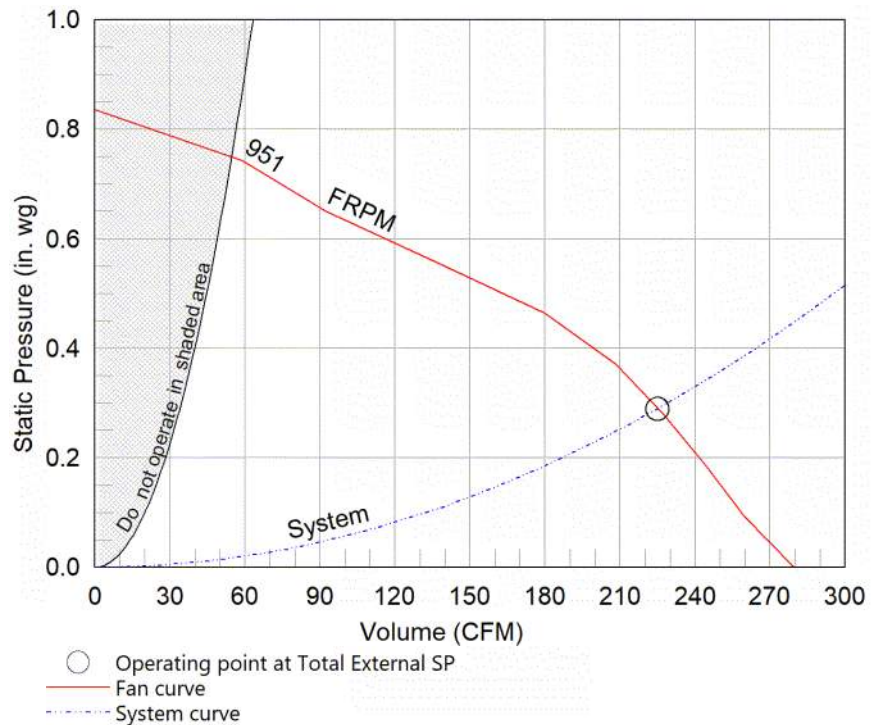
Motor with Thermal Overload
Motor with CSA Approval
Motor with 40 Degree C Ambient Temperature
UL/cUL 507 Listed - Electric Fan
Solid State Speed Control, 6 Amp, Shipped Loose
Isolation Kit, (PN: VI KIT-SP/CSP), Shipped Loose
Adjustable easy installation mounting bracket
Energy Star Certified
Standard Grille
Polypropylene Wheel Material
Can Be Used to Comply with: ASHRAE 62.2, California Title 24, and Washington State Energy Code



Dimensional	
Quantity	2
Weight w/o Acc's (lb)	24
Weight w/ Acc's (lb)	26

Performance	
Requested Volume (CFM)	225
Actual Volume (CFM)	225
Total External SP (in. wg)	0.29
Fan RPM	951
* FLA (A)	0.56
Elevation (ft)	768
Airstream Temp.(F)	70
Air Density (lb/ft3)	0.073
Sones	2.5

Motor	
Motor Mounted	Yes
** Input Watts (W)	53
Voltage/Cycle/Phase	115/60/1
Enclosure	ODP



Notes:

All dimensions shown are in units of in.
*FLA is approximate and will vary slightly with the motor.
Sones - calculated using AMCA 301 at 5 ft
** Wattage is approximate and may vary between motors.

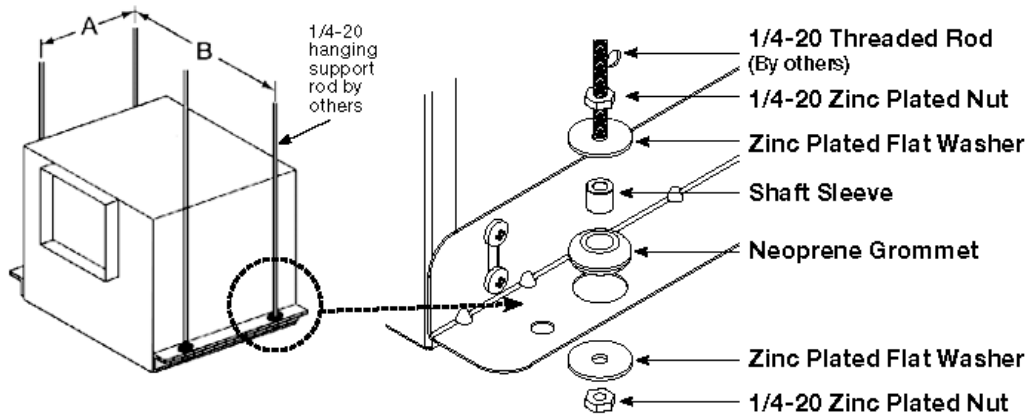


Isolation Kit

Type: Hanging

Standard Construction Features:

- Neoprene vibration isolation for hanging installation - Kit includes four isolators and all hardware necessary for mounting one unit except for the 0.25 in. x 20 in. threaded rod to be supplied by others - Fan mounting brackets include prepunched mounting holes for ease of installation



Unit Size	A	B
B50-B200	4 1/2 (114)	15 5/8 (397)
A50-A190	5 1/2 (140)	14 5/8 (371)
A200-A390	6 3/4 (171)	15 1/2 (394)
A410, A510, A710, A780	9 1/4 (235)	19 5/8 (498)
A700	5 1/2 (140)	25 1/8 (638)
A900 - A1050, A1410 - A1550	9 1/4 (235)	25 3/8 (645)
A1750, A2150	9 1/4 (235)	36 3/4 (933)
A3600	9 1/4 (235)	48 5/8 (1235)
All dimensions shown in inches (millimeters).		

Description	Qty
Neoprene Grommets	4
1 x 32 Zinc Plated Nuts	8
Zinc Plated Flat Washers	8
3/8 x 3/16 Shaft Sleeves	4