

Report By:

National TAB
1329 E. KEMPER ROAD
SUITE 4210
CINCINNATI, OH 45246



Report: PUNCH LIST
Function: Test, Adjust, & Balance
Date: 02/04/2026
Completed By: National TAB

PROJECT
02-02-26 CULVERS - CHARLOTTE, NC

3416 W ARROWOOD RD

CHARLOTTE, NC 28273

Client

Accurex
400 Ross Ave
Schofield, WI 54476

National TAB

Project: 02-02-26 CULVERS - CHARLOTTE, NC

Table Of Contents

Section	Page #
Issue Data	3

Issue List

- Damper inaccessible
- Damper not installed SRGD12
- Diffuser not installed SGRD 2
- EF-1 Mop room fan
- Missing dampers on RTU 1
- RTU 1 balance note
- RTU-2 ductwork undersized
- RTU-2 return ductwork damaged
- Women's RR damper inaccessible



02-02-26 CULVERS - CHARLOTTE, NC

Project Issue Information

Issue Name : Damper inaccessible
Description : Damper inaccessible, supply drop is laying on ceiling pad, unable moved. diffuser is taking to the air from neighboring diffusers.
Created By : National TAB **Assigned To :** National TAB - Dan Hertenstein
Status : Open
Priority : Medium **Asset Tag :** SGRD10
Originated Date : 02/05/2026 - Jearod Ferrette - National TAB

Project Issue File Details



02/05/2026



02/05/2026



02-02-26 CULVERS - CHARLOTTE, NC

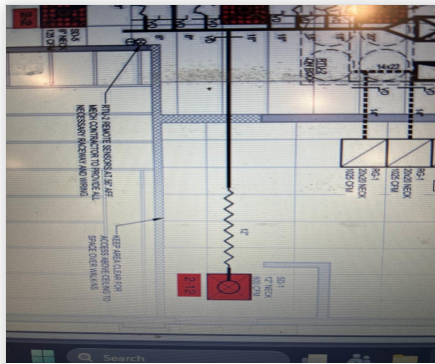
Project Issue Information

Issue Name : Damper not installed SRGD12
Description : SGRD 2-12 damper not installed.
Created By : National TAB **Assigned To :** National TAB - Dan Hertenstein
Status : Open
Priority : Medium **Asset Tag :** SGRD12
Originated Date : 02/05/2026 - Jearod Ferrette - National TAB

Project Issue File Details



02/05/2026



02/05/2026

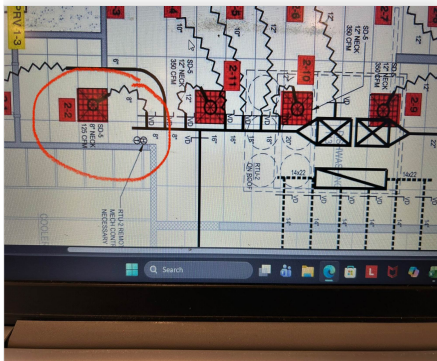


02-02-26 CULVERS - CHARLOTTE, NC

Project Issue Information

Issue Name : Diffuser not installed SGRD 2
Description : On RTU 2 diffuser 2-2 wasn't installed due to spacing issue. Duct was capped, and the air will be equally balanced to the back 3 diffuser of the cook line.
Created By : National TAB **Assigned To :** National TAB - Dan Hertenstein
Status : Open
Priority : Medium **Asset Tag :** SGRD2
Originated Date : 02/04/2026 - Jearod Ferrette - National TAB

Project Issue File Details



02/04/2026



02/04/2026



02-02-26 CULVERS - CHARLOTTE, NC

Project Issue Information

Issue Name : EF-1 Mop room fan
Description : EF-1 doesn't have power ran to the unit.
Created By : National TAB **Assigned To :** National TAB - Dan Hertenstein
Status : Closed
Priority : Urgent **Asset Tag :** EF1
Originated Date : 02/04/2026 - Jearod Ferrette - National TAB

Project Issue File Details



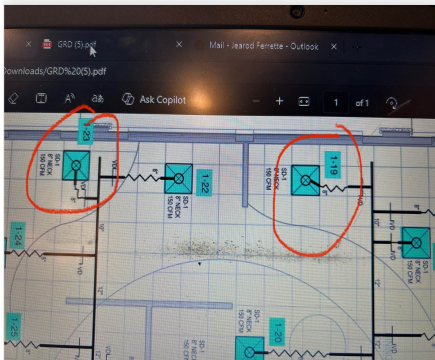


02-02-26 CULVERS - CHARLOTTE, NC

Project Issue Information

Issue Name : Missing dampers on RTU 1
Description : Missing dampers on SGRD 19/23.
Created By : National TAB **Assigned To :** National TAB - Dan Hertenstein
Status : Open
Priority : Medium **Asset Tag :** RTU1
Originated Date : 02/05/2026 - Jearod Ferrette - National TAB

Project Issue File Details



02/05/2026

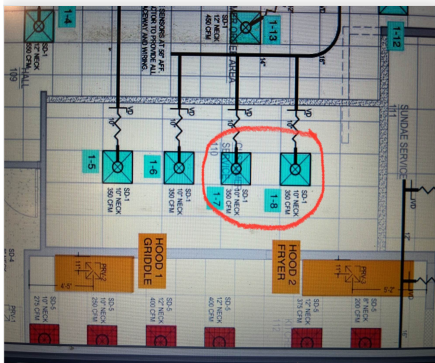


02-02-26 CULVERS - CHARLOTTE, NC

Project Issue Information

Issue Name : RTU 1 balance note
Description : Inaccessible/ missing dampers are stealing air from the front registers. The ceilings are at least 14 feet so the air flow change will not be noticeable.
Created By : National TAB
Assigned To : National TAB - Dan Hertenstein
Status : Open
Priority : InfoOnly
Asset Tag : RTU1
Originated Date : 02/05/2026 - Jearod Ferrette - National TAB

Project Issue File Details



02/05/2026



02-02-26 CULVERS - CHARLOTTE, NC

Project Issue Information

Issue Name : RTU-2 ductwork undersized
Description : RTU 2 is currently at 88% of design total flow. The ductwork from the unit was installed horizontally, this restricts the unit. On the MSET rooftop drawings refers to a note (M101) about proper ductwork size. Currently the supply ductwork 25x14 and also insulated inside. Supply pressure is at 1.50", the unit was at max amps 26.9a @61.5hz.

Created By : National TAB **Assigned To :** National TAB - Dan Hertenstein

Status : Open

Priority : Urgent **Asset Tag :** RTU2

Originated Date : 02/04/2026 - Jearod Ferrette - National TAB

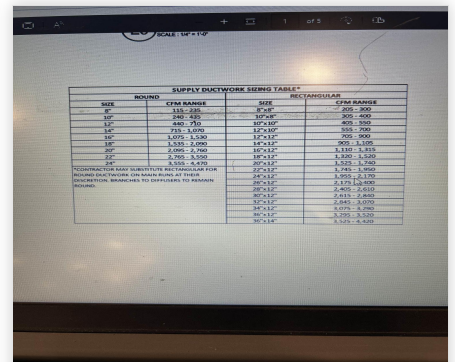
Project Issue File Details



02/04/2026



02/04/2026



02/04/2026

Project Issue Response Details

- **02/04/2026 National TAB - Jearod Ferrette**
 - The unit was slowed down by 2hz, to bring down the amps. Per the mechanical there is an email chain from Captive Air. The engineers wanted the unit to be ducted horizontally. This unit will be proportionally balance.



02/04/2026



02/04/2026



02/04/2026



02-02-26 CULVERS - CHARLOTTE, NC

Project Issue Information

Issue Name : RTU-2 return ductwork damaged
Description : On RTU-2 return duct damaged
Created By : National TAB **Assigned To :** National TAB - Dan Hertenstein
Status : Open
Priority : High **Asset Tag :** RTU2
Originated Date : 02/04/2026 - Jearod Ferrette - National TAB

Project Issue File Details



02/04/2026



02/04/2026

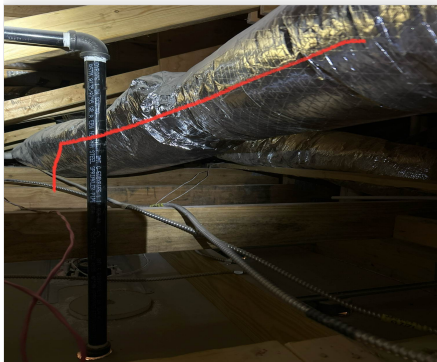


02-02-26 CULVERS - CHARLOTTE, NC

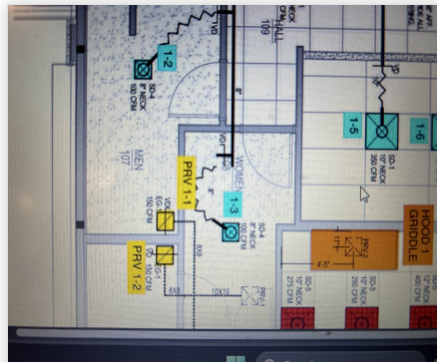
Project Issue Information

Issue Name : Women's RR damper inaccessible
Description : Women's restroom, damper inaccessible above hard ceiling.
Created By : National TAB **Assigned To :** National TAB - Dan Hertenstein
Status : Open
Priority : Medium **Asset Tag :** SGRD3
Originated Date : 02/05/2026 - Jearod Ferrette - National TAB

Project Issue File Details



02/05/2026



02/05/2026