

Report By:

National TAB
1329 E. KEMPER ROAD
SUITE 4210
CINCINNATI, OH 45246



Report: PUNCH LIST
Function: Test, Adjust, & Balance
Date: 02/04/2026
Completed By: National TAB

PROJECT
02-02-26 CULVERS - CHARLOTTE, NC

3416 W ARROWOOD RD

CHARLOTTE, NC 28273

Client

Accurex
400 Ross Ave
Schofield, WI 54476

National TAB

Project: 02-02-26 CULVERS - CHARLOTTE, NC

Table Of Contents

Section	Page #
Issue Data	3

Issue List

- Diffuser not installed.
- EF-1 Mop room fan
- RTU-2 ductwork undersized
- RTU-2 return ductwork damaged

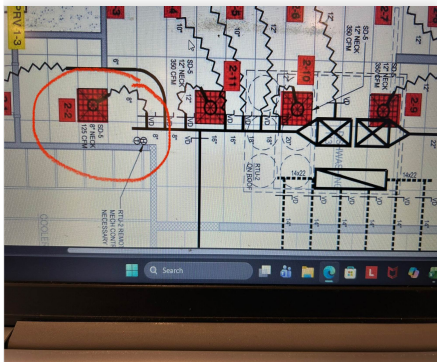


02-02-26 CULVERS - CHARLOTTE, NC

Project Issue Information

Issue Name : Diffuser not installed.
Description : On RTU 2 diffuser 2-2 wasn't installed due to spacing issue. Dust was capped, and the air will be equally balanced to the back 3 diffuser of the cook line.
Created By : National TAB **Assigned To :** National TAB - Dan Hertenstein
Status : Open
Priority : Low **Asset Tag :** SGRD2
Originated Date : 02/04/2026 - Jearod Ferrette - National TAB

Project Issue File Details



02/04/2026



02/04/2026



02-02-26 CULVERS - CHARLOTTE, NC

Project Issue Information

Issue Name : EF-1 Mop room fan
Description : EF-1 doesn't have power ran to the unit.
Created By : National TAB **Assigned To :** National TAB - Dan Hertenstein
Status : Open
Priority : Urgent **Asset Tag :** EF1
Originated Date : 02/04/2026 - Jearod Ferrette - National TAB

Project Issue File Details





02-02-26 CULVERS - CHARLOTTE, NC

Project Issue Information

Issue Name : RTU-2 ductwork undersized
Description : RTU 2 is currently at 88% of design total flow. The ductwork from the unit was installed horizontally, this restricts the unit. On the MSET rooftop drawings refers to a note (M101) about proper ductwork size. Currently the supply ductwork 25x14 and also insulated inside. Supply pressure is at 1.50", the unit was at max amps 26.9a @61.5hz.

Created By : National TAB **Assigned To :** National TAB - Dan Hertenstein

Status : Open

Priority : Urgent **Asset Tag :** RTU2

Originated Date : 02/04/2026 - Jearod Ferrette - National TAB

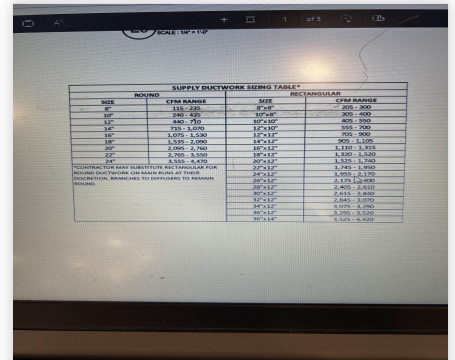
Project Issue File Details



02/04/2026



02/04/2026



02/04/2026

Project Issue Response Details

- **02/04/2026 National TAB - Jearod Ferrette**
 - I slowed the unit down by 2hz, to bring down the amps. Per the mechanical there is an email chain from Captive Air. The engineers wanted the unit to be ducted horizontally. This unit will be proportionally balance.



02-02-26 CULVERS - CHARLOTTE, NC

Project Issue Information

Issue Name : RTU-2 return ductwork damaged
Description : On RTU-2 return duct damaged
Created By : National TAB **Assigned To :** National TAB - Dan Hertenstein
Status : Open
Priority : High **Asset Tag :** RTU2
Originated Date : 02/04/2026 - Jearod Ferrette - National TAB

Project Issue File Details



02/04/2026



02/04/2026