

EXISTING CONDITIONS SHOWN ARE FROM PREVIOUS DRAWINGS. MECHANICAL CONTRACTOR SHALL FIELD VERIFY EXACT LOCATIONS OF ALL DUCT AND DIFFUSERS. IF MAJOR DIFFERENCES OCCUR IN FIELD, CONTACT CHICK-FIL-A CONSTRUCTION MANAGER.

DEMOLITION NOTES

- ① CONTRACTOR IS RESPONSIBLE FOR OBTAINING ALL NECESSARY PERMITS AND PAYING ALL APPLICABLE FEES.
- ② DISPOSAL OF EQUIPMENT AND MATERIALS REQUIRED TO BE REMOVED SHALL BE THE RESPONSIBILITY OF THE CONTRACTOR PERFORMING THE WORK.
- ③ DE-ENERGIZE ALL ELECTRICAL CIRCUITS RELATED TO EQUIPMENT THAT WILL BE MOVED OR REMOVED PRIOR TO STARTING WORK. DE-ENERGIZED CIRCUITS SHALL BE PROTECTED WITH LOCKING DEVICES USING APPROPRIATE WARNING LABELS.
- ④ MECHANICAL CONTRACTOR SHALL BE RESPONSIBLE FOR PATCHING ROOF AFTER REMOVAL OF EXISTING MECHANICAL EQUIPMENT. SEE ARCHITECTURAL DRAWINGS FOR ROOF PATCHING REQUIREMENTS.
- ⑤ EXCEPT WHERE NOTED, EXISTING REMOTE TEMPERATURE &/OR HUMIDITY SENSORS TO REMAIN. IF DURING RENOVATION PURPOSES CONTROLS SHALL BE TAKEN DOWN, MECHANICAL CONTRACTOR SHALL BE RESPONSIBLE FOR REINSTALLING AND TO PROVIDE ANY ADDITIONAL WIRING NEEDED. VERIFY EXISTING UNIT CONTROLS ARE IN GOOD WORKING ORDER. IF NOT, CONTACT CHICK-FIL-A CONSTRUCTION MANAGER.
- ⑥ MECHANICAL CONTRACTOR SHALL REPLACE FILTERS FOR ALL RTUS AT END OF PROJECT AND PRIOR TO REOPENING. MC TO PROVIDE PROPOSAL TO FACILITIES MANAGER, CONSTRUCTION MANAGER, AND OPERATOR TO CORRECT EXISTING RTU PUNCH ITEMS IDENTIFIED BY HALTON.
- ⑦ CONTRACTOR SHALL INDICATE SALVAGE VALUE IN BID FOR ROOFTOP UNITS BEING REPLACED.

MECHANICAL DEMOLITION FLOOR PLAN
SCALE: 1/4"=1'-0"

DEMOLITION LEGEND	
	EXISTING EQUIPMENT, DUCT, AIR DEVICE ETC. TO REMAIN INTACT
	EQUIPMENT, DUCT, AIR DEVICE ETC. TO BE DEMOLISHED

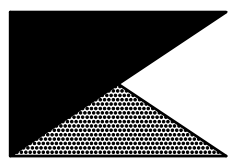
DEMOLITION KEY NOTES

- ① DETACH AND DEMOLISH EXISTING AIR DEVICE. SECURE DUCT ABOVE CEILING GRID FOR RE-CONNECTION. SEE SHEET M.I.I FOR NEW CONNECTION.
- ② DEMOLISH EXISTING HOOD, ALL ASSOCIATED GREASE DUCT, CAPTURE JET FAN AND DIFFUSER (IF EXISTING), EXHAUST FAN, AND IT'S ASSOCIATED ROOF CURB. PATCH AND REPAIR ROOF TO MATCH SURROUNDING CONSTRUCTION.
- ③ DEMOLISH EXISTING KITCHEN A/C UNIT, UNIT CONTROLS (REMOTE TEMP SENSOR, REMOTE HUMIDITY SENSOR, TSTAT, REMOTE SMOKE DETECTOR TEST/RESET STATION, ETC.), SUPPLY/RETURN AIR DROPS, ALL ASSOCIATED SUPPLY/RETURN DUCT & AIR DEVICES (UNLESS NOTED OTHERWISE). COVER ROOF CURB WEATHER-TIGHT FOR RE-USE. SEE SHEET M.I.I.
- ④ EXISTING REMOTE TEMPERATURE AND/OR REMOTE HUMIDITY SENSORS TO BE REPLACED WITH NEW. DEMOLISH ALL ASSOCIATED CONTROL WIRING. SEE SHEET M.I.I FOR FURTHER INFORMATION.
- ⑤ EXISTING AC UNIT TO BE REPLACED WITH NEW AS SCHEDULED ON SHEET M3.I. UNLESS NOTED OTHERWISE, DEMOLISH ALL EXISTING UNIT CONTROLS (REMOTE TEMP. SENSOR, REMOTE HUMIDITY SENSOR, TSTAT, REMOTE SMOKE DETECTOR ANNUNCIATOR, ETC.). EXISTING ROOF CURB AND SUPPLY & RETURN DUCT TO REMAIN. COVER CURB WEATHER-TIGHT FOR RE-USE.
- ⑥ DEMOLISH DIFFUSER, DUCT RUN-OUT, AND SPIN-IN COLLAR. PATCH & REPAIR MAIN TRUNK DUCT AIR TIGHT.
- ⑦ DEMOLISH EXISTING DUCT SMOKE DETECTOR(S) AND REMOTE TEST/RESET STATIONS). SEE SHEET M.I.I FOR NEW.

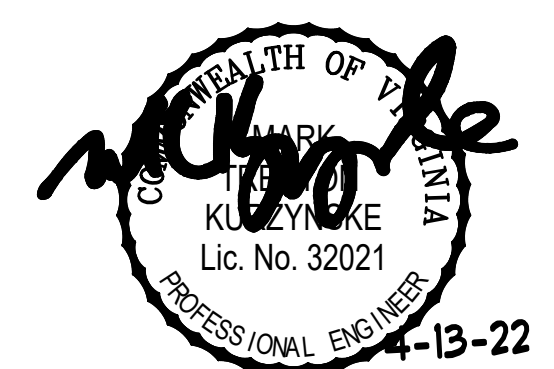


Chick-fil-A

Chick-fil-A
5200 Buffington Road
Atlanta, Georgia 30349



Kurzynske & Associates
CONSULTING ENGINEERS
2705 Lebanon Pike - Suite One
Nashville, Tennessee 37214
Telephone: (615) 255-8203



CHICK-FIL-A
White Oak Village
4443 S Laburnum Ave
Richmond, VA 23231

FSR#02298

BUILDING TYPE / SIZE: S06C
RELEASE: v11.21

REVISION SCHEDULE		
NO.	DATE	DESCRIPTION
2	03/14/22	Pre-Bid Comments

CONSULTANT PROJECT # 22006.HF.R
PRINTED FOR CONSTRUCTION
DATE 01/25/2022
DRAWN BY AK

Information contained on this drawing and in all digital files produced for above named project may not be reproduced in any manner without express written or verbal consent from authorized project representatives.
SHEET
MECHANICAL
DEMO PLAN
SHEET NUMBER

CONSTRUCTION

M0.1



Chick-fil-A
5200 Buffington Road
Atlanta, Georgia 30349

Chick-fil-A
5200 Buffington Road
Atlanta, Georgia 30349

Kurzynske & Associates
CONSULTING ENGINEERS
2705 Lebanon Pike - Suite One
Nashville, Tennessee 37214
Telephone: (615) 255-5203



CHICK-FIL-A
White Oak Village
4443 S Laburnum Ave
Richmond, VA 23231

FSR#02298

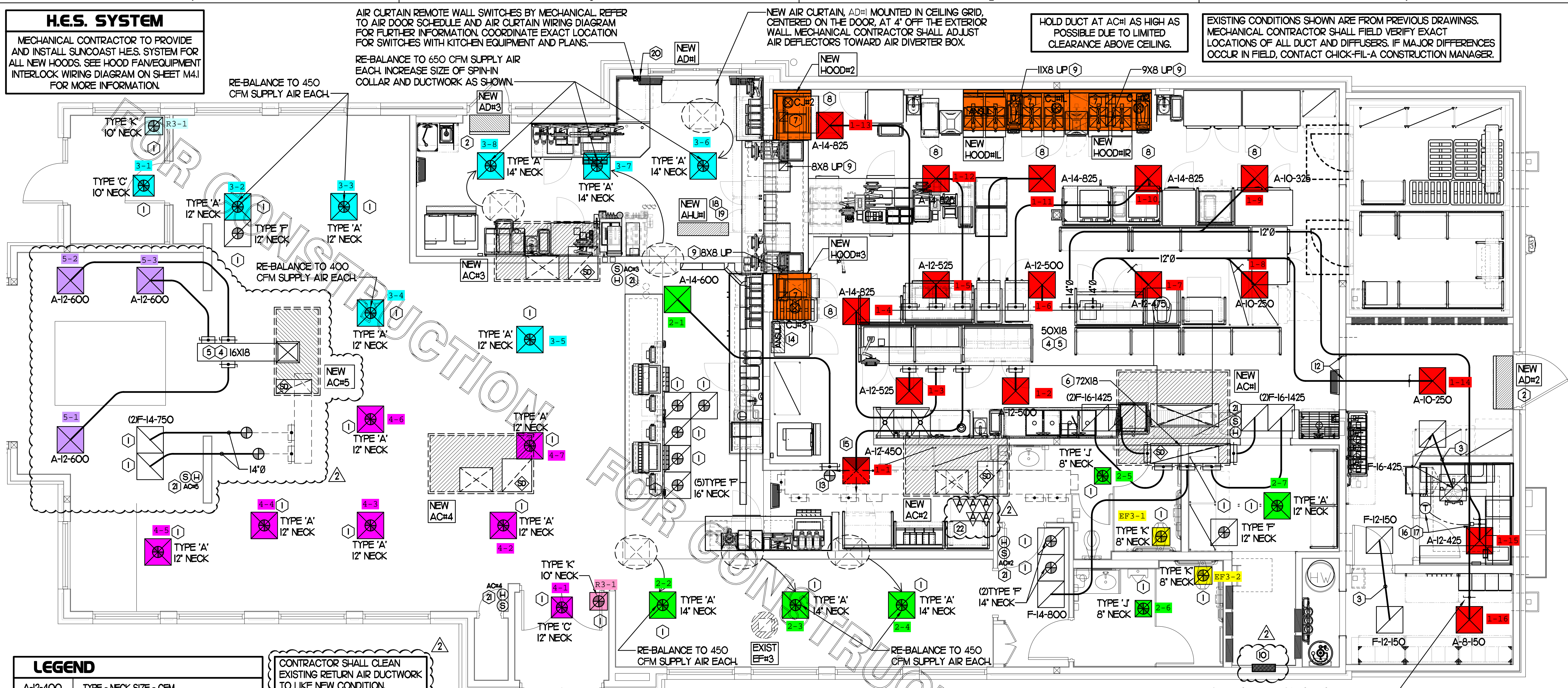
BUILDING TYPE / SIZE: S06C
RELEASE: v11.21

NO.	DATE	DESCRIPTION
2	03/14/22	Pre-Bid Comments

CONSULTANT PROJECT # 22006.HF.R
PRINTED FOR CONSTRUCTION
DATE 01/25/2022
DRAWN BY AK

Information contained on this drawing and in all digital files produced for above named project may not be reproduced in any manner without express written or verbal consent from authorized project representatives.
SHEET
MECHANICAL
FLOOR PLAN
SHEET NUMBER

M1.1



H.E.S. SYSTEM
MECHANICAL CONTRACTOR TO PROVIDE AND INSTALL SUNCOAST H.E.S. SYSTEM FOR ALL NEW HOODS. SEE HOOD FAN/EQUIPMENT INTERLOCK WIRING DIAGRAM ON SHEET M41 FOR MORE INFORMATION.

AIR CURTAIN REMOTE WALL SWITCHES BY MECHANICAL REFER TO AIR DOOR SCHEDULE AND AIR CURTAIN WIRING DIAGRAM FOR FURTHER INFORMATION. COORDINATE EXACT LOCATION FOR SWITCHES WITH KITCHEN EQUIPMENT AND PLANS.
RE-BALANCE TO 650 CFM SUPPLY AIR EACH. INCREASE SIZE OF SPIN-IN COLLAR AND DUCTWORK AS SHOWN.

NEW AIR CURTAIN, ADH1 MOUNTED IN CEILING GRID, CENTERED ON THE DOOR, AT 4' OFF THE EXTERIOR WALL. MECHANICAL CONTRACTOR SHALL ADJUST AIR DEFLECTORS TOWARD AIR DIVERTER BOX.

HOLD DUCT AT ACH1 AS HIGH AS POSSIBLE DUE TO LIMITED CLEARANCE ABOVE CEILING.

EXISTING CONDITIONS SHOWN ARE FROM PREVIOUS DRAWINGS. MECHANICAL CONTRACTOR SHALL FIELD VERIFY EXACT LOCATIONS OF ALL DUCT AND DIFFUSERS. IF MAJOR DIFFERENCES OCCUR IN FIELD, CONTACT CHICK-FIL-A CONSTRUCTION MANAGER.

LEGEND

A-12-400	TYPE - NECK SIZE - CFM
+	SPIN-IN FITTING, MVD, NO SCOOP
⊙	REMOTE TEMPERATURE SENSOR
⊙	REMOTE HUMIDITY SENSOR
⊙	SMOKE DETECTOR
⊙	GREASE ACCESS DOOR TYPE
→	DIRECTION OF THROW
①	KEY NOTE REFERENCE
⊕	EXISTING START COLLAR
⊕	EXISTING RUNNOUT TO REMAIN
⊕	EXISTING RETURN/EXHAUST (TYP)
⊕	EXISTING SUPPLY DIFFUSER (TYP)
⊕	NEW RETURN/EXHAUST, UNO. (TYP)
⊕	NEW SUPPLY DIFFUSER, UNO. (TYP)
⊕	NEW DUCT (TYP)
⊕	SMOKE DETECTOR TEST/RESET STATION

CONTRACTOR SHALL CLEAN EXISTING RETURN AIR DUCTWORK TO LIKE NEW CONDITION.

SHEET NOTES

- DUCT SIZES SERVING DIFFUSERS AND GRILLES ARE SAME SIZE AS DIFFUSER OR GRILLE NECK UNLESS NOTED OTHERWISE.
- REFER TO ELEVATIONS ON M21 AND HOOD DETAILS ON M-111 FOR CAPTURE-JET FANS DUCTING REQUIREMENTS.
- HARDPIPE SHALL BE USED FOR ALL TAKE-OFFS EXCEPT WHERE ALLOWED BY DETAIL 1/1M3. USE OF FLEXIBLE DUCT SHALL BE LIMITED TO THOSE SITUATIONS WHERE NO OTHER MEANS TO ACCOMPLISH ROUTING IS POSSIBLE.
- COORDINATE NEW WORK WITH EXISTING CONDUITS, STRUCTURE AND PIPING. FIELD VERIFY EXISTING CONDITIONS PRIOR TO COMMENCING WORK. CONTRACTOR TO NOTIFY DESIGN TEAM WITHOUT DELAY IF ACTUAL LOCATION OF EXISTING MECHANICAL EQUIPMENT DOES NOT MATCH FLOOR PLAN.
- MECHANICAL CONTRACTOR SHALL BALANCE HVAC SYSTEM AS SHOWN ON THIS PLAN & IN SCHEDULES ON SHEET M31. IF AIRFLOWS DIFFER BY MORE THAN 5%, CONTACT CFA CONSTRUCTION MANAGER. TEST AND BALANCE REPORT SHALL BE DONE PRIOR TO STORE TURNOVER AND SUBMITTED TO CFA'S CONSTRUCTION MANAGER.

MECHANICAL FLOOR PLAN

SCALE: 1/4"=1'-0"

KEY NOTES (THIS SHEET ONLY)

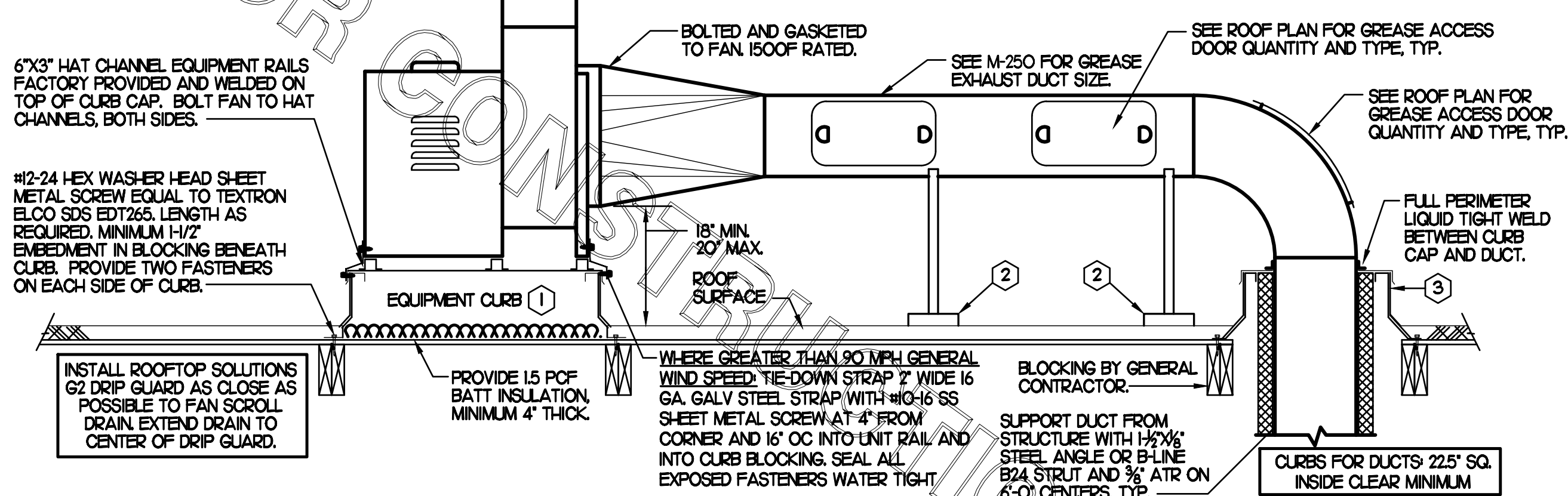
- CONNECT NEW AIR DEVICE TO EXISTING TAKE-OFF. IF NECESSARY, MECHANICAL CONTRACTOR SHALL PROVIDE AND INSTALL NEW DUCT IN ORDER TO MAKE CONNECTION TO AIR DEVICE IN NEW LOCATION. ANY FLEX DUCT USED SHALL NOT BE LONGER THAN 4'-0". SEE DETAIL 1/1M3.1. COORDINATE AIR DEVICE LOCATIONS WITH ARCHITECTURAL REFLECTED CEILING PLAN.
- AIR CURTAIN MOUNTED OVER DOOR HEADER AT 7'-2" AFF TO BOTTOM OF UNIT. PROVIDE BLOCKING IN WALL BEHIND AIR CURTAIN. USE FACTORY PRE-PUNCHED MOUNTING HOLES ON BACK SIDE OF AIR CURTAIN ONLY. ATTACH AIR CURTAIN TO WALL USING 3/8" LAG BOLTS. LENGTH AS REQUIRED TO FULLY PENETRATE BLOCKING. LOCATE MAGNETIC CONTACT TYPE MICROSWITCH IN DOOR FRAME ON STRIKE SIDE.
- TRANSFER AIR DUCT. NO BALANCING DAMPERS AT GRILLES.
- BRANCH TAKE-OFFS SHALL NOT BE LOCATED CLOSER THAN 3'-0" FROM ANY ELBOW INCLUDING THE SUPPLY AIR DROP FROM CURB.
- TRANSITION IN VERTICAL DROP FROM FULL SIZE OF CURB OPENING TO SIZE SHOWN. TRANSITION WITHIN CURB WHERE REQUIRED TO AVOID STRUCTURE. PROVIDE TURNING VANES IN ELBOWS, INCLUDING THE SUPPLY AIR DROP FROM UNIT.
- TRANSITION IN VERTICAL DROP FROM FULL SIZE OF CURB OPENING TO SIZE SHOWN. TRANSITION WITHIN CURB WHERE REQUIRED TO AVOID STRUCTURE. NO TURNING VANES IN ELBOW.
- HALTON MBD DAMPER AT HOOD COLLAR BY MECHANICAL CONTRACTOR. REFER TO SHEET M21 AND M-111 FOR FURTHER INFORMATION.
- MECHANICAL CONTRACTOR TO ADJUST PATTERN DEFLECTORS TO THROW STRAIGHT DOWN.
- GREASE DUCT UP THRU ROOF FROM FULL SIZE OF MBD COLLAR. OFFSETS THRU ROOF NOT TO BE GREATER THAN 45 DEGREES. SEE SHEET M1.2 FOR CONTINUATION.
- ELECTRICAL CONTRACTOR TO PURCHASE AND INSTALL NEW CFA T5000 TEMP CONTROL PANEL WITH AUTOMATIC TIMER FOR LIGHTING CONTROLS AND 6-THERMOSTAT TEMP CONTROL CABINET. COORDINATE WITH ELECTRICAL CONTRACTOR FOR NEW LOCATION OF TEMP CONTROL CABINET. CONTROL WIRING TERMINATIONS BETWEEN NEW THERMOSTATS, NEW SENSORS, AND NEW/EXISTING RTUS BY MECHANICAL CONTRACTOR. REFER TO WIRING DIAGRAM ON SHEET M41.
- MOUNT NEW SMOKE DETECTOR TEST/RESET STATIONS FOR ALL A/C UNITS ON WALL. CONTACT SUNCOAST ENVIRONMENTAL CONTROLS AT 1-877-544-6679 TO PURCHASE A NEW SMOKE DETECTOR TEST/RESET STATIONS FOR EACH RTU. COORDINATE WITH KITCHEN PLANS FOR EXACT LOCATION.
- ROUTE DUCT BETWEEN WALL STUDS ABOVE CEILING. COORDINATE WITH ARCH AND STRUCTURAL FOR EXACT LOCATION. USE 1" WRAP AT WALL PENETRATION.
- PROVIDE & INSTALL NEW SPIN-IN COLLAR AND ROUTE NEW DUCT TO NEW GRILLE AS SHOWN.
- ANSUL UTILITY CABINET. LOCATE TOP OF CABINET 0'-2" BELOW CEILING. COORDINATE FINAL MOUNTING LOCATION WITH KITCHEN EQUIPMENT.
- MECHANICAL CONTRACTOR TO CLOSE THE AIR PATTERN DEFLECTORS ON THE SHADED SIDE.
- YOUNG REGULATOR 12" MODEL 2010 ROUND ZONE DAMPER WITH MODEL T-312CE AUTOMATIC CHANGE-OVER THERMOSTAT. MOUNT TSTAT AT 4'-0" AFF. POWER OPEN/SRING CLOSE. ADJUST MECHANICAL LIMIT FOR 50 CFM MINIMUM AIRFLOW. CHICK-FIL-A HAS A NATIONAL ACCOUNT WITH TOM BARRON COMPANY FOR THE ZONE DAMPER. THE MECHANICAL CONTRACTOR SHALL PURCHASE THE ZONE DAMPER DIRECTLY FROM TOM BARRON COMPANY. CONTACT MR. SCOTT GEORGE AT 404-351-0101 FOR PRICING AND AVAILABILITY. ZONE DAMPERS NOT PURCHASED THRU TOM BARRON COMPANY WILL NOT BE ACCEPTED.
- PROVIDE 120V/24V 50 VA TRANSFORMER TO SERVE YOUNG REGULATOR ZONE DAMPER ACTUATOR AND THERMOSTAT. POWER TRANSFORMER FROM 120V POWER CIRCUIT THAT REMAINS LIVE 24/7. PROVIDE ALL NECESSARY WIRING AND COMPONENTS TO MAKE CONTROL AND POWER CONNECTIONS TO TRANSFORMER, ZONE DAMPER, AND THERMOSTAT PER MANUFACTURER'S IOM. SEE DETAIL ON SHEET M41 FOR MORE INFORMATION.
- MOUNT AIR HANDLER ON OVER-HEAD WALL ABOVE CASSED OPENING. MOUNT UNIT AT 12" ABOVE CASSED OPENING. ROUTE REFRIGERANT PIPING ABOVE CEILING AND UP THRU ROOF TO CONDENSING UNIT. CU#1. SEE SHEET M1.2 FOR CONDENSING UNIT LOCATION. REFRIGERANT PIPING BELOW ROOF SHALL BE HIDDEN WITHIN WALLS AND CEILINGS.
- ROUTE CONDENSATE FROM AHU#1 TO TERMINATE INTO FLOOR DRAIN LOCATED BEHIND ICE MAKER IN DRIVE THRU. COORDINATE EXACT LOCATION OF DRAIN WITH PLUMBING PLANS. CONDENSATE PIPING SHALL BE TYPE K COPPER WITH 1/2" ARMAFLEX INSULATION. CONDENSATE MUST SLOPE MIN. 1/8" PER FOOT TO TERMINATION POINT. CONTRACTOR SHALL INSTALL A CONDENSATE LIFT PUMP IN ORDER TO ROUTE CONDENSATE ABOVE CEILING.
- MOUNT AHU#1 THERMOSTAT ON WALL NEXT TO ADH1 REMOTE WALL SWITCHES. SEE SCHEDULE ON SHEET M31 FOR INTERLOCK WITH T5000 PANEL.
- MOUNT NEW REMOTE TEMP SENSOR AND NEW LENOX HUMIDITY SENSOR FOR ROOFTOP UNIT AS NOTED BELOW (OR ABOVE WAINSCOTING IF APPLICABLE). ROUTE NEW WIRING FOR NEW REMOTE TEMP SENSOR TO NEW TSTAT IN CFA T5000 PANEL. ROUTE NEW WIRING FOR NEW LENOX HUMIDITY SENSOR TO UNIT ON ROOF. REFER TO WIRING DIAGRAM ON SHEET M41.
 - ACH1 MOUNT NEW REMOTE TEMP SENSOR ON WALL AT 5'-8" AFF. COORDINATE FINAL MOUNTING LOCATION IN FIELD WITH KITCHEN EQUIPMENT, SHELVING, AND ELECTRICAL. MOUNT NEW LENOX HUMIDITY SENSOR DIRECTLY ABOVE REMOTE TEMP SENSOR.
 - ACH2, ACH3 MOUNT NEW SENSORS IN THE SAME LOCATION AS DEMOLISHED SENSORS.
 - ACH4, ACH5 MOUNT NEW REMOTE TEMP SENSOR ON WALL AT 5'-0" AFF. MOUNT NEW LENOX HUMIDITY SENSOR DIRECTLY ABOVE REMOTE TEMP SENSOR.
- MOUNT NEW SMOKE DETECTOR TEST/RESET STATIONS FOR ALL A/C UNITS ON WALL. CONTACT SUNCOAST ENVIRONMENTAL CONTROLS AT 1-877-544-6679 TO PURCHASE A NEW SMOKE DETECTOR TEST/RESET STATIONS FOR EACH RTU. COORDINATE WITH KITCHEN PLANS FOR EXACT LOCATION.

TOTAL AIR BALANCE SCHEDULE

EQUIPMENT MARK	ACH1 (NEW)	ACH2 (NEW)	ACH3 (NEW)	ACH4 (NEW)	ACH5 (NEW)	EF#1 (NEW)	EF#2 (NEW)	EF#3 (EXIST)	TOTAL
SERVES	KITCHEN	SIDE DINING	MAIN DINING	MAIN DINING	PLAY AREA	HOOD#1L HOOD#1R	HOOD#2 HOOD#3	REST-ROOMS	
SUPPLY AIR CFM	8,500	2,830	4,000	2,765	1,800				19,895
RETURN AIR CFM	6,500	2,080	3,000	2,165	1,500				15,245
OUTSIDE AIR CFM	2,000	750	1,000	600	300				+4,650
EXHAUST CFM						1,912	1,402	400	-3,714
PRESSURIZATION									+936
REMARKS	ADJUST AND VERIFY BALANCE OF ALL HVAC EQUIPMENT IS AS SHOWN IN ORDER TO MAINTAIN BUILDING AIR BALANCE.								

FABRICATE 18 GA STAINLESS NOZZLE. NOZZLE INLET FULL SIZE OF FAN DISCHARGE. 1'-0" MINIMUM NOZZLE HEIGHT. TERMINATE 0'-2" ABOVE HIGHEST PARAPET WITHIN 10'-0".

- KEYED NOTES:**
- EQUIPMENT CURB WITH 4" WIDE T-BAR SUPPORTS 12" ON CENTER AND 20 GAUGE STEEL CURB CAP PROVIDED BY TOM BARRON COMPANY. WIDTH OF CURB SHALL BE 4" WIDER THAN FAN FOOTPRINT IN BOTH DIRECTIONS. HEIGHT OF CURB SHALL BE SUCH THAT NO PART OF ANY DUCT TO BE WITHIN 18" OF ROOF SURFACE BUT NO GREATER THAN 20" ABOVE ROOF SURFACE. PROVIDE FACTORY EQUIPMENT RAILS WELDED TO CAP.
 - ALL DUCT ON ROOF TO BE SUPPORTED WITH MIRO 6-DS DUCT SUPPORT SYSTEM AT 6'-0" INTERVALS MAXIMUM. PROVIDE MIRO SUPPORT PADS AT EACH SUPPORT. ATTACH SUPPORT TO DUCT. PROVIDE A DUCT SUPPORT STAND AT EACH ROOF PENETRATION.
 - 12" HIGH INSULATED CURB PROVIDED BY TOM BARRON COMPANY.



2 KITCHEN HOOD EXHAUST FAN - UTILITY SET FAN
NO SCALE

SHEET NOTES

- ALL DUCTWORK AND UNFINISHED METAL ON ROOF EXCEPT STAINLESS SHALL BE PREPARED WITH TWO COATS OF SHERWIN WILLIAMS B66-200 SERIES DTM WHITE ACRYLIC SEMI-GLOSS INDUSTRIAL MAINTENANCE COATING, DEGREEE AND PRIME BARE METAL SURFACE WITH ONE COAT OF SHERWIN WILLIAMS DTM PRIMER PRIOR TO PAINTING.
- AT EACH PIECE OF ROOF EQUIPMENT, PROVIDE A PLASTIC ENGRAVED LABEL WITH 1" HIGH WHITE LETTERS ON A BLACK BACKGROUND. THE LABEL IS TO HAVE A SELF-ADHESIVE BACKING.
- MAINTAIN 18" CLEARANCE FROM GREASE EXHAUST DUCTWORK ABOVE ROOF TO ANY COMBUSTIBLE CONSTRUCTION INCLUDING PARAPET WALLS.

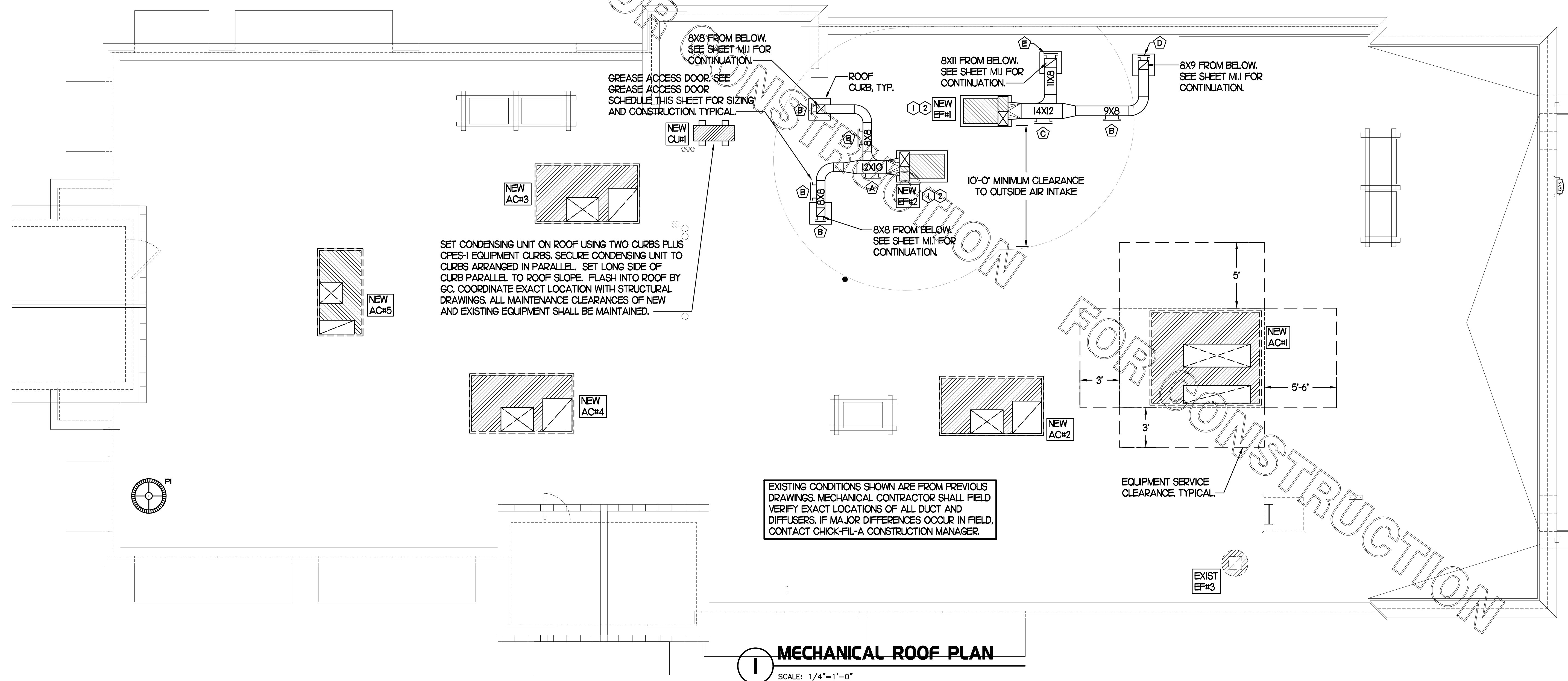
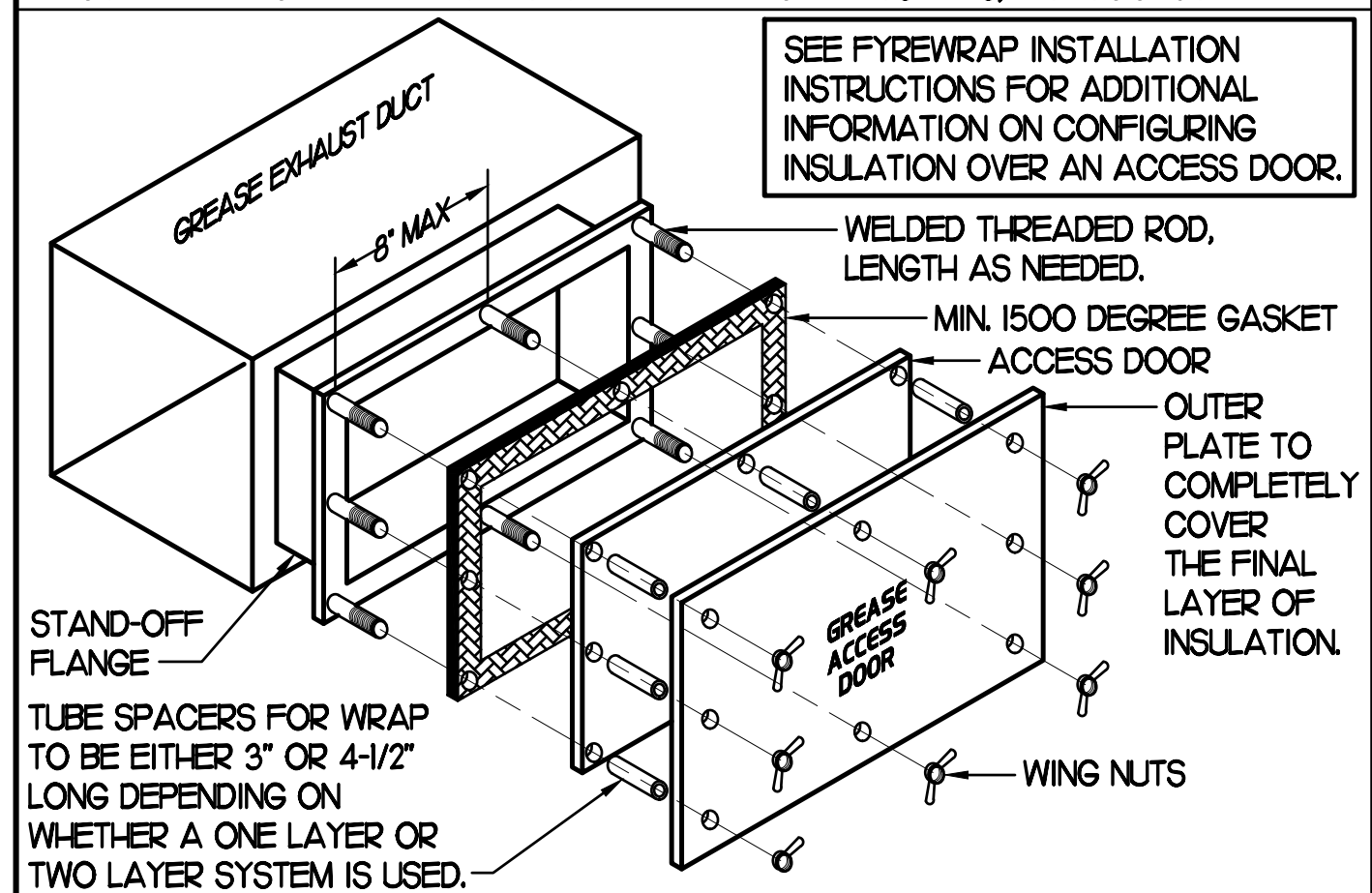
KEY NOTES

- FABRICATE DISCHARGE AIR NOZZLE. LOCATE EXHAUST TERMINATION A MINIMUM 10'-0" FROM OUTSIDE AIR INTAKES. SEE DETAIL 2 THIS SHEET.
- GREASE EXHAUST DUCT LOCATED ON ROOF SHALL SLOPE 1/4" PER FOOT TOWARDS THE HOOD, THE FAN, OR A COMBINATION OF THE TWO SUCH THAT NO PORTION OF THE RADIUS ELBOW AT THE CURB IS BELOW THE CURB CAP AND SUCH THAT THE FAN BASE SETS DIRECTLY ON THE CURB RAILS. THE BOTTOM OF THE RADIUS ELBOW MAY BE EVEN FLUSH WITH THE CURB CAP, BUT NOT BELOW THE CAP. THE DUCT AT THE FAN MUST BE CENTERED ON THE FAN INLET. THE MC MAY ADD A VERTICAL RISER AT THE RADIUS ELBOW LOCATED AT THE DUCT CURB AS NEEDED IN ORDER TO CENTER THE DUCT ON THE FAN INLET.

GREASE ACCESS DOOR SCHEDULE

MARK	OPENING SIZE	DOOR SIZE	REMARKS
A	7.5H X 14W	9.5H X 16W	1
B	5.5H X 14W	7.5H X 16W	1
C	9.5H X 14W	11.5H X 16W	1
D	6.5H X 14W	8.5H X 16W	1
E	8.5H X 14W	10.5H X 16W	1

1. ACCESS DOORS SHALL BE UL 1978 LISTED OR FIELD FABRICATED, REQUIRE NO TOOLS FOR REMOVAL AND MEET THE REQUIREMENTS OF THE CURRENT EDITION OF THE IMC. ACCESS DOOR ASSEMBLY SHALL BE WELDED IN PLACE TO THE GREASE EXHAUST DUCT AND THE ACCESS DOOR SHALL BE SECURED WITH THUMB SCREWS. ACCESS DOORS SHALL BE SEALED WITH A MINIMUM 1500 DEGREE GASKET MATERIAL EQUIVALENT TO THAT MANUFACTURED BY BRETON INDUSTRIES, INC (800) 382-2491.

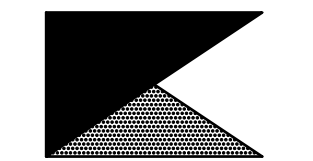


MECHANICAL ROOF PLAN
SCALE: 1/4"=1'-0"

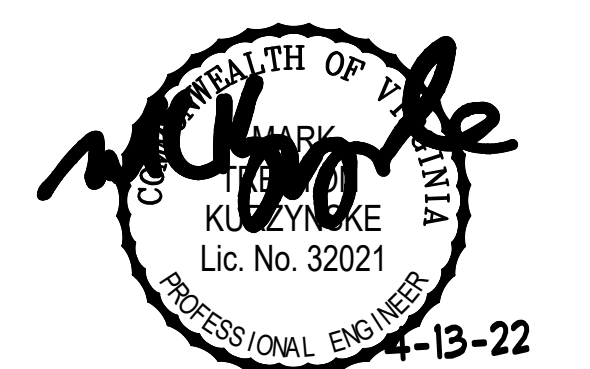


Chick-fil-A

Chick-fil-A
5200 Buffington Road
Atlanta, Georgia 30349



Kurzynske & Associates
CONSULTING ENGINEERS
2705 Lebanon Pike - Suite One
Nashville, Tennessee 37214
Telephone: (615) 255-5203



CHICK-FIL-A
White Oak Village
4443 S Laburnum Ave
Richmond, VA 23231

FSR#02298

BUILDING TYPE / SIZE: S06C
RELEASE: v11.21

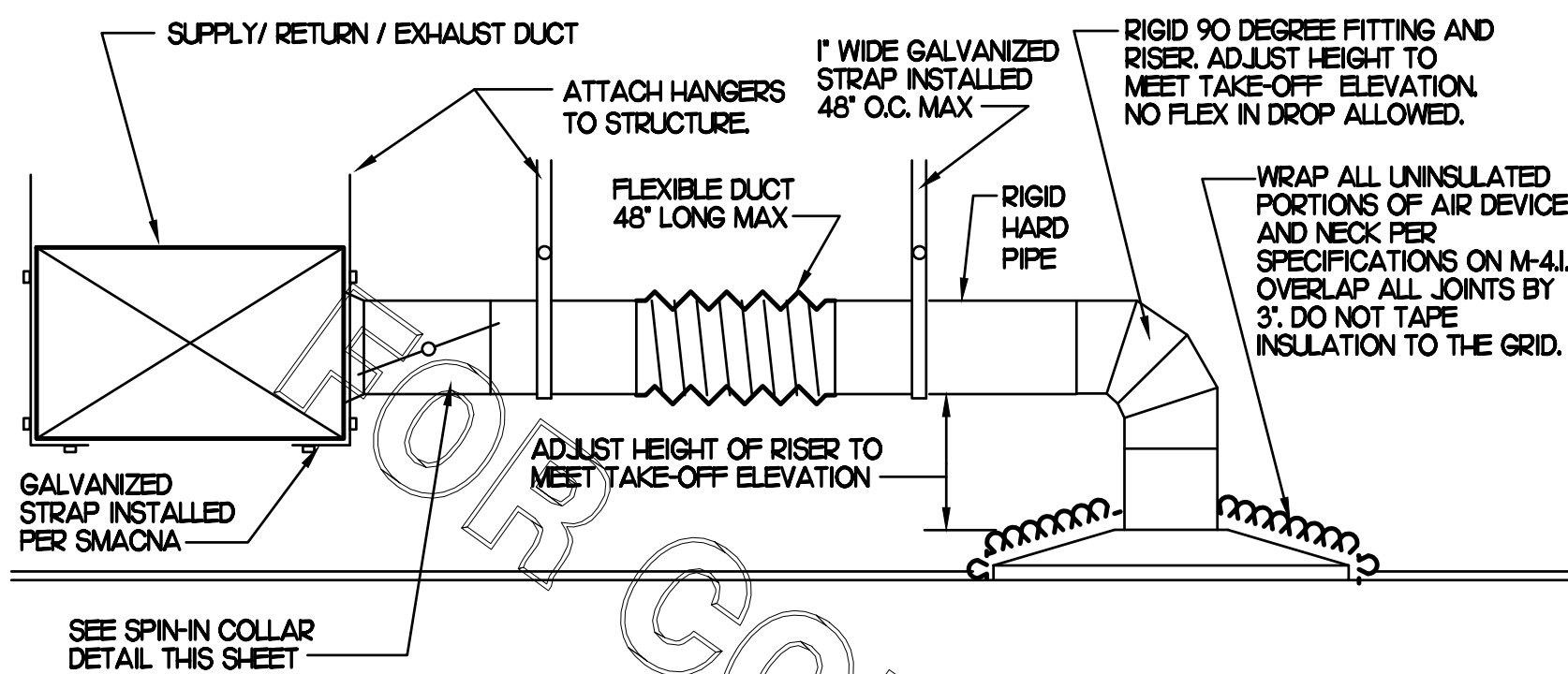
REVISION SCHEDULE

NO.	DATE	DESCRIPTION

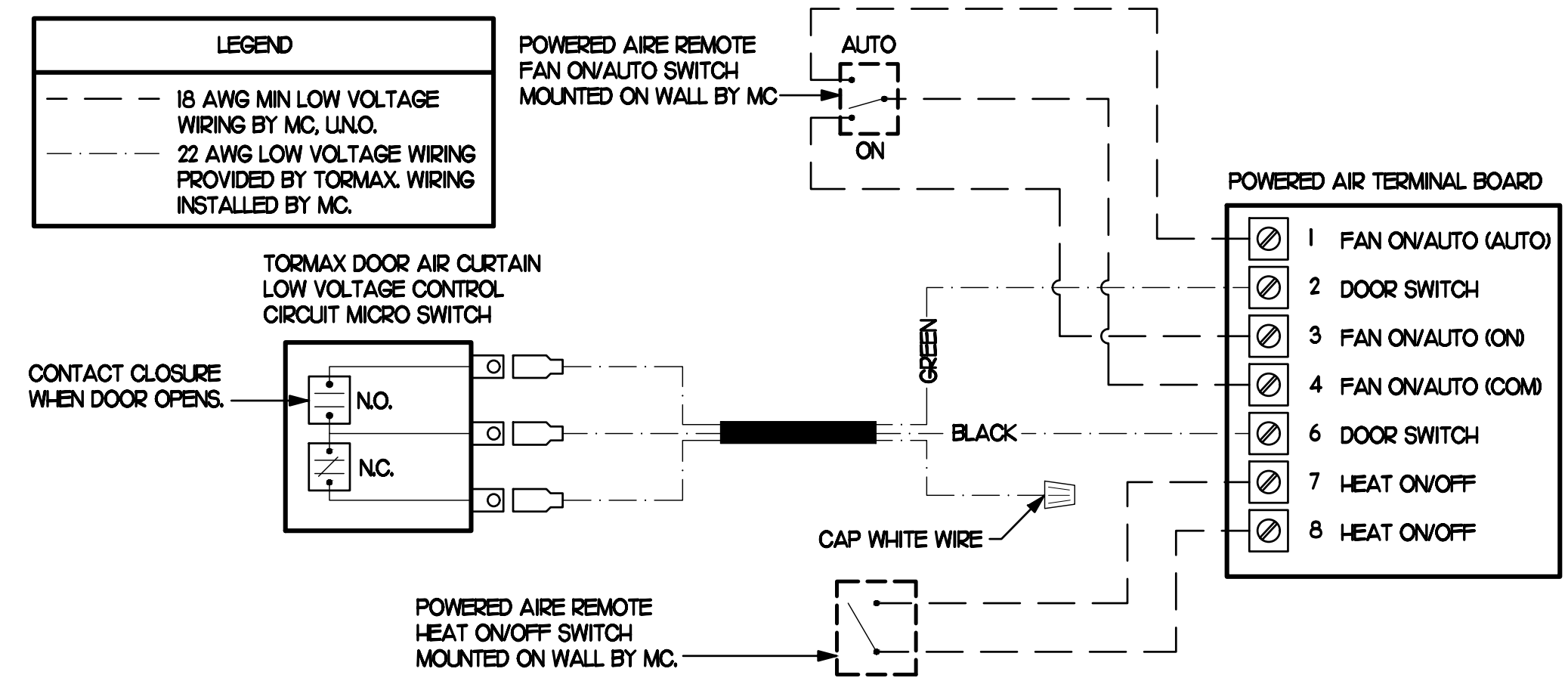
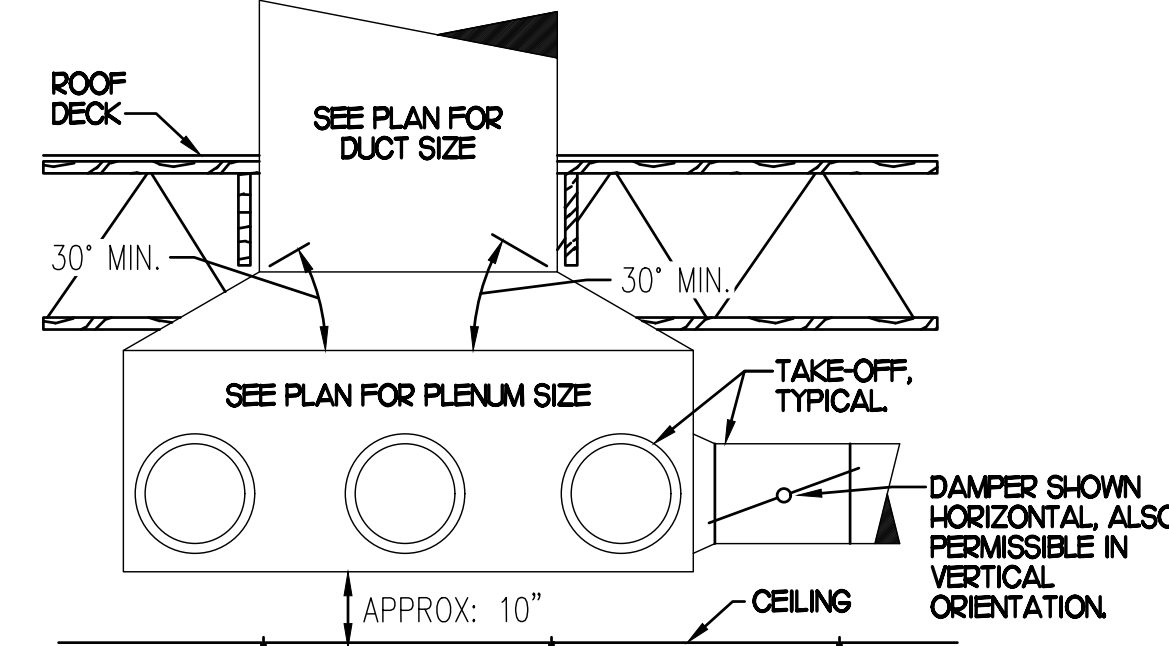
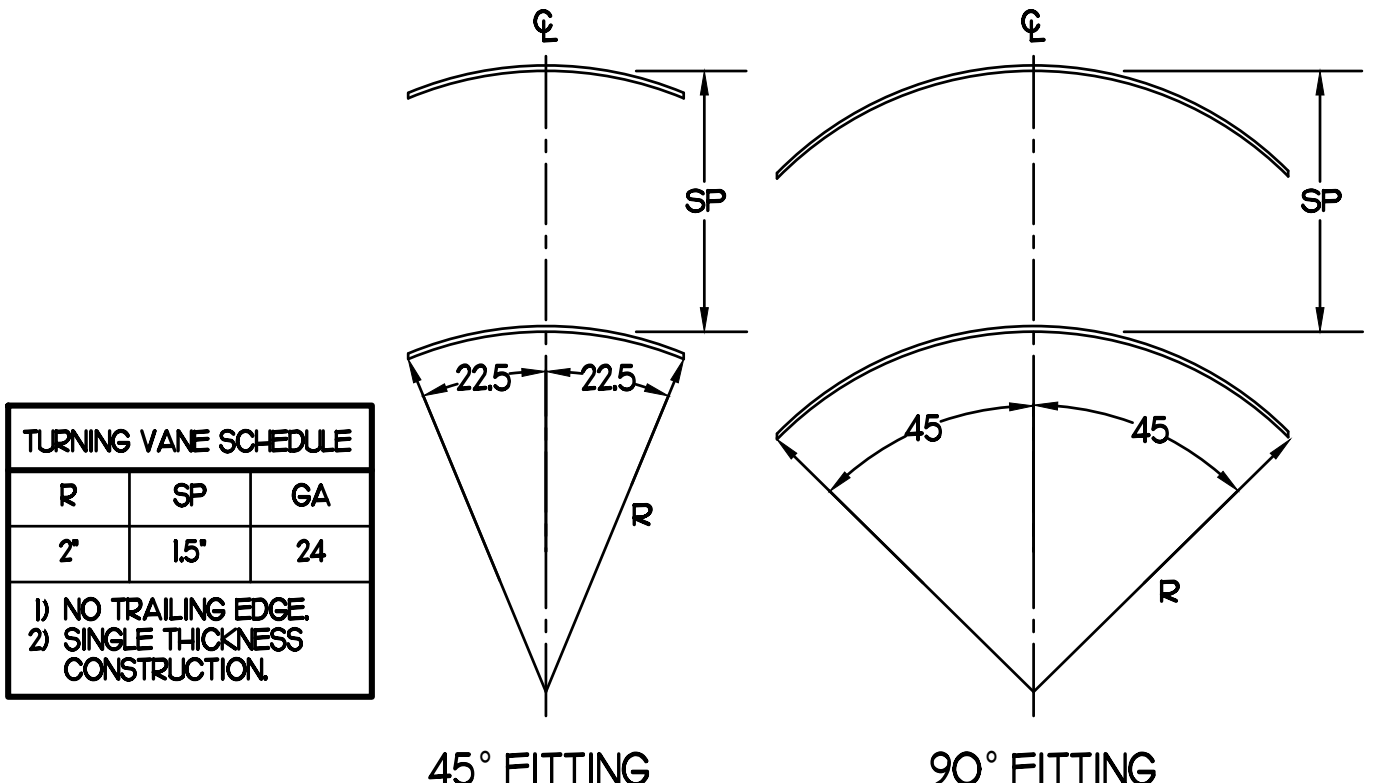
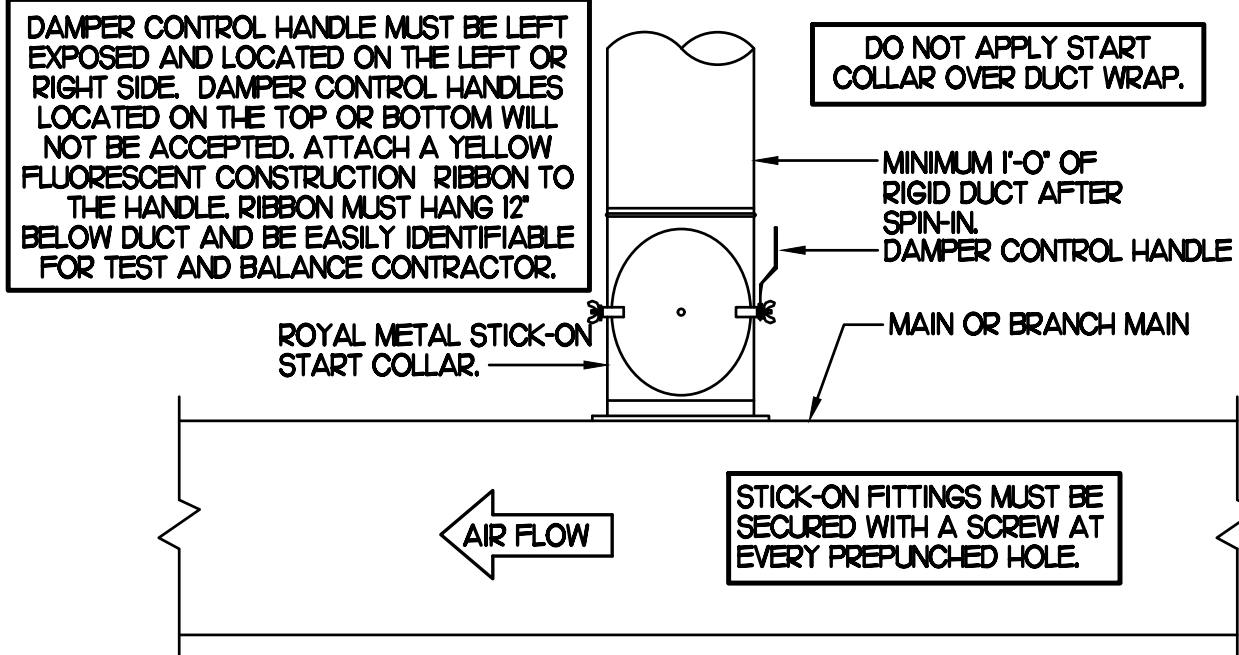
CONSULTANT PROJECT # 22006.HF.R
PRINTED FOR CONSTRUCTION
DATE 01/25/2022
DRAWN BY AK

Information contained on this drawing and in all digital files produced for above named project may not be reproduced in any manner without express written or verbal consent from authorized project representatives.
SHEET
MECHANICAL
ROOF PLAN
SHEET NUMBER

M1.2



CHICK-FIL-A HAS A NATIONAL ACCOUNT WITH TOM BARRON COMPANY FOR THE ROYAL METAL START COLLARS. THE MECHANICAL CONTRACTOR IS REQUIRED TO PURCHASE THE ROYAL METAL START COLLARS DIRECTLY FROM TOM BARRON COMPANY. CONTACT MR. SCOTT GEORGE AT 404-351-0100 FOR PRICING AND AVAILABILITY. ROYAL METAL START COLLARS NOT PURCHASED THRU TOM BARRON COMPANY WILL NOT BE ACCEPTED.



AIR DOOR SCHEDULE

MARK	CFM	VELOCITY	HEATING CAP	HP	AREA SERVED	MODEL	MANUFACTURER	REMARKS
AD#1 (NEW)	1543	2338	10 KW	3/4	DRIVE THRU	CHA-148B	POWERED-AIRE	2-4
AD#2 (NEW)	3,867	4,220	NA	3/4	REAR DOOR	RBT-148	POWERED-AIRE	1
AD#3 (NEW)	2,899	4,220	NA	3/4	DRIVE THRU DOOR	RBT-136	POWERED-AIRE	1

NOTES: CHICK-FIL-A HAS A NATIONAL ACCOUNT WITH TOM BARRON COMPANY FOR THE AIR DOORS. THE MECHANICAL CONTRACTOR SHALL PURCHASE THE AIR DOORS DIRECTLY FROM TOM BARRON COMPANY. CONTACT MR. SCOTT GEORGE AT 404-351-0100 FOR PRICING AND AVAILABILITY. AIR DOORS NOT PURCHASED THRU TOM BARRON COMPANY WILL NOT BE ACCEPTED.

REMARKS: 1. FACTORY PROVIDED MAGNETIC DOOR CONTACT WITH FACTORY INSTALLED LOW VOLTAGE CONTROLS LOCATED IN AIR DOOR CABINET. 2. FACTORY PROVIDED, WIRED, AND UNIT MOUNTED SPEED CONTROLLER LOCATED ABOVE CEILING. 3. FACTORY WIRED DISCONNECT. 4. FACTORY PROVIDED, FIELD INSTALLED REMOTE WALL SWITCHES FOR HEATING ON/OFF AND FAN ON/AUTO SWITCH. SEE AIR CURTAIN WIRING DIAGRAM DETAIL THIS SHEET.

AIR DEVICE SCHEDULE

MARK	DESCRIPTION	LOCATION	NECK SIZE	FACE SIZE	FRAME TYPE	REMARKS
A	PRICE MODEL APDC ALUMINUM SUPPLY AIR DIFFUSER WITH INDIVIDUALLY ADJUSTABLE CURVED AIR PATTERN CONTROLLERS.	DINING AREA KITCHEN	SEE PLAN	24X24	LAY-IN	1,7
C	PRICE MODEL SWCD STEEL SUPPLY AIR DIFFUSER FIELD ADJUSTABLE AIR PATTERN CONTROLLERS.	ENTRYS	14X14	20X20	BEVELLED	1,3,5,6
E	PRICE MODEL 22 DOUBLE DEFLECTION ALUMINUM SIDEWALL SUPPLY GRILLE, FRONT BLADE PARALLEL TO LONG SIDE.	PLAY AREA	18X12	20X14	SURFACE	1
F	PRICE MODEL 80 EGGRATE RETURN AIR GRILLE WITH REMOVABLE WHITE COKE, FACTORY FLAT BLACK BACKPAN AND ROUND NECK.	DINING KITCHEN	SEE PLAN	24X24	LAY-IN	1,7
J	PRICE MODEL SWCD STEEL SUPPLY AIR DIFFUSER FIELD ADJUSTABLE AIR PATTERN CONTROLLERS.	RESTROOMS	10X10	16X6	BEVELLED	1,2,3,5,6
K	PRICE MODEL APDR ALUMINUM PERFORATED FACE RETURN AIR GRILLE.	RESTROOMS ENTRYS	14X14	17X7	SURFACE	1,4,5,6
L	PRICE MODEL 21 ALUMINUM SIDEWALL RETURN GRILLE, FRONT BLADE PARALLEL TO LONG SIDE.	PLAY AREA	16X6	18X8	SURFACE	1

NOTES: MECHANICAL CONTRACTOR SHALL PURCHASE THE AIR DEVICES DIRECTLY FROM TOM BARRON COMPANY. CONTACT MR. SCOTT GEORGE AT 404-351-0100 FOR PRICING AND AVAILABILITY. AIR DEVICES NOT PURCHASED THRU TOM BARRON COMPANY WILL NOT BE ACCEPTED.

REMARKS: 1. STANDARD OFF WHITE FINISH. 2. PROVIDE MODEL VCS3 NECK DAMPER. 3. SEE DRAWING M1 FOR THROW. 4. PROVIDE MODEL VCR7 NECK DAMPER ON GRILLES IN RESTROOMS. 5. PROVIDE BACKPAN MC TO SEAL JOINTS WITH MASTIC AND INSULATE EXTERNALLY. 6. FIELD INSULATE BACKPAN AS SHOWN ON DETAIL 1M3.1. 7. FACTORY INSULATED R-6 BACKPAN.

VENTILATION CALCULATIONS

ZONE	PEOPLE OUTDOOR AIR RATE (OP)	ZONE POPULATION (PZ)	AREA OUTDOOR AIR RATE (OA)	ZONE FLOOR AREA (AZ)	OUTDOOR AIRFLOW RATE REQD (VBZ)
CORRIDOR (ENTRYS)	-	-	0.06	171	11
DINING (FAST FOOD)	75	136	0.18	1,356	1,265
SALES (SERVING AREA)	75	8	0.12	518	123
GYM (PLAY AREA)	20	3	0.18	287	112
OFFICE	5	1	0.06	54	9
STORAGE 1	-	-	0.12	155	19
STORAGE 2	-	-	0.12	166	20
KITCHEN	75	26	0.12	1,258	346

KITCHEN IS 1,258 SQUARE FEET. AT 0.70 CFM EXHAUST REQUIRED PER SQUARE FOOT, KITCHEN IS REQUIRED TO EXHAUST 881 CFM. KITCHEN EXHAUSTS 3,314 CFM.

RESTROOMS HAVE TWO FIXTURES EACH, REQUIRING 100 CFM EXHAUST CONTINUOUSLY OR 140 CFM EXHAUST INTERMITTENTLY. EACH RESTROOM EXHAUSTS 200 CFM.

ZONE 1 - ENTRYS + DINING + SALES + PLAY AREA + STORAGE 1 = 1,530 CFM
1,530 CFM (VBZ) / 0.8 = 1,913 CFM (VOZ)
AC#2, AC#3, AC#4, AND AC#5 PROVIDE 2,650 CFM OUTSIDE AIR TO ZONE 1.

ZONE 2 - OFFICE + STORAGE 2 + KITCHEN = 375 CFM
375 CFM (VBZ) / 0.8 = 469 CFM (VOZ)
AC#1 PROVIDES 2,000 CFM OUTSIDE AIR TO ZONE 2.

CALCULATIONS ARE BASED ON TABLE 403.3.11 OF THE 2018 INTERNATIONAL MECHANICAL CODE. (FOR OA RATE: VBZ = RP#PZ + RA#AZ ; ; FOR ZONE OA RATE: VOZ = VBZ / 0.8)

EXHAUST FAN SCHEDULE

MARK	CFM	ESP	RPM	TP SPEED (FPM)	HP (WATTS)	AREA SERVED	MODEL	MANUFACTURER	REMARKS
EF#1 (NEW)	1,912	0.75	1,331	5,226	3/4	HOOD#1 & HOOD#R	150 OPS	LOREN COOK	H2
EF#2 (NEW)	1,402	0.95	1,199	4,708	3/4	HOOD#2 & HOOD#3	150 OPS	LOREN COOK	H2
EF#3 (EXIST)	400	-	-	-	-	RESTROOMS	-	EXISTING	-

NOTES: GREASE EXHAUST FAN RPM BASED ON 90 DEGREE F AIR AT 1000 FEET ABOVE SEA LEVEL. GREASE EXHAUST FANS TO BE UL 762 LISTED. CHICK-FIL-A HAS A NATIONAL ACCOUNT WITH TOM BARRON COMPANY FOR FAN/CLUBB PACKAGE. MECHANICAL CONTRACTOR IS REQUIRED TO PURCHASE THE FAN/CLUBB PACKAGE DIRECTLY FROM TOM BARRON COMPANY. CONTACT MR. SCOTT GEORGE AT 404-351-0100 FOR PRICING AND AVAILABILITY. FANS AND CLUBS NOT PURCHASED THRU TOM BARRON COMPANY WILL NOT BE ACCEPTED.

REMARKS: 1. PROVIDE AND INSTALL ROOFTOP SOLUTIONS G2 DRIP GUARD. MC TO CONTACT ROOFTOP SOLUTIONS AT 800-913-7034. 2. PROVIDE FACTORY INSTALLED, PRE-WIRED, NEMA 3 NON-FUSED DISCONNECT. COORDINATE WITH E.C. 3. INTEGRAL THERMAL OVERLOAD WITH AUTOMATIC RESET. 4. UPELAST, ARRANGEMENT 10, CCW ROTATION SEE PLANS TO CONFIRM CONFIGURATION. 5. PROVIDE FACTORY STEEL FAN WHEEL. 6. PROVIDE FACTORY STEEL INLET FLANGE AND INLET COMPANION FLANGE. 7. PROVIDE FACTORY WEATHER HOUSING WITH HINGED ACCESS DOOR. 8. PROVIDE FACTORY DRAIN CONNECTION. 9. PROVIDE FACTORY BOLTED ACCESS DOOR ON SCROLL. 10. PROVIDE FACTORY STEEL OUTLET COMPANION FLANGE. 11. UTILITY SET FAN CLUB AND ASSOCIATED EXHAUST DUCT CLUB PROVIDED BY TOM BARRON COMPANY. 12. PROVIDE FACTORY BELT DRIVE WITH ADJUSTABLE MOTOR SHEAVE AND SPARE BELT.

DUCTLESS SPLIT SYSTEM HEAT PUMP UNIT SCHEDULE

MARK	COOLING CAPACITY (MBH)	HEATING CAPACITY (MBH)	EFFICIENCIES	FAN SECTION (CFM)	ELECTRICAL DATA	R-410A MODEL	MFR
	MIN. MAX.	MIN. MAX.	SEER HSPFF	AIR FLOW (MET)	NCA (MOCP) VOLTAGE	AHU CU	
AHUM101 (NEW)	180 335	180 400	16.2 10.0	635-730-830	28 140 208V/160	PKA-A36KA7 PLZ-HA36HA5	MITSUBISHI

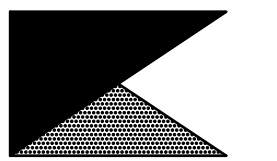
NOTES: MECHANICAL CONTRACTOR SHALL PURCHASE THE SPLIT SYSTEM HEAT PUMP DIRECTLY FROM TRANS/MITSUBISHI. CONTACT MS. LAURI FRANKOWSKI AT 630-400-4285, FOR PRICING AND AVAILABILITY.

REMARKS: 1. ELECTRICIAN TO PROVIDE NON-FUSED DISCONNECT. 2. MECHANICAL TO PROVIDE AND INSTALL REFRIGERANT PIPING AS PER MFR RECOMMENDATIONS. 3. PROVIDE ENGRAVED PLASTIC LABEL AT AHU AND CU WITH HIGH WHITE LETTERS ON A BLACK BACKGROUND RIVETED TO UNIT CABINET. 4. PROVIDE WITH ADEQUATE REFRIGERANT LINE SET. FIELD VERIFY DISTANCE FROM WHERE CONDENSER IS TO BE SET TO AIR HANDLER LOCATION PRIOR TO ORDERING. 5. PROVIDE WITH WALL MOUNTED THERMOSTAT (TAR-CT01MAU-SBL) USE TWO-WIRE, STANDARD, NON-POLAR CONTROL WIRE TO CONNECTOR TB5 ON INDOOR UNIT CONTROLLER. PROGRAM THERMOSTAT CONTROLS TO MATCH DRIVE-THRU RTU SETPOINTS. 6. PROVIDE PAC-SE58A-E CONNECTOR AT INDOOR UNIT (CONNECTOR CN3), WIRE ORANGE AND RED WIRES TO SPARE POLE ON RELAY R-1 IN SINOCAST T-500 PANEL (TERMINALS 11 AND 7 RESPECTIVELY) AND CAP THE BROWN WIRE. 7. PROVIDE WITH CONDENSATE PUMP (BLUE DIAMOND MAXI BLUE MODEL# X87-72).



Chick-fil-A

Chick-fil-A
5200 Buffington Road
Atlanta, Georgia 30349



Kurzynske & Associates
CONSULTING ENGINEERS
2705 Lebanon Pike - Suite One
Nashville, Tennessee 37214
Telephone: (615) 255-5203



CHICK-FIL-A
White Oak Village
4443 S Laburnum Ave
Richmond, VA 23231

FSR#02298

BUILDING TYPE / SIZE: S06C
RELEASE: v11.21

NO.	DATE	DESCRIPTION
1	2/28/2022	Building Comments

CONSULTANT PROJECT # 22006.HF.R
PRINTED FOR CONSTRUCTION
DATE 01/25/2022
DRAWN BY AK

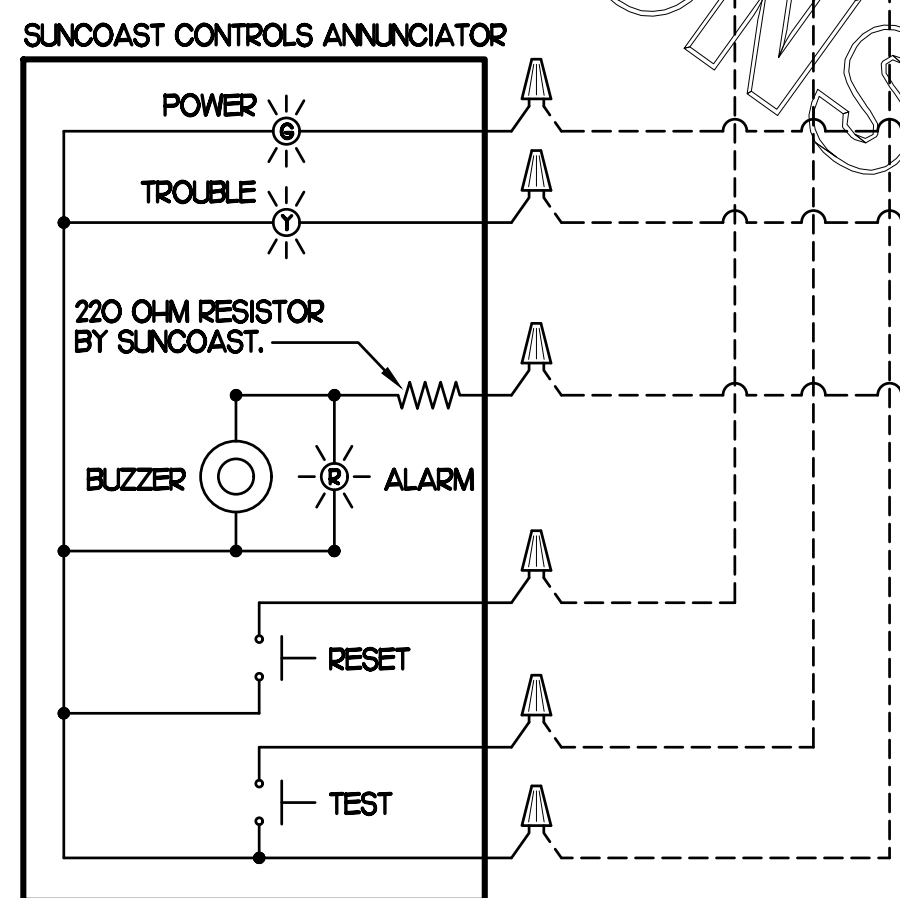
Information contained on this drawing and in all digital files produced for above named project may not be reproduced in any manner without express written or verbal consent from authorized project representatives.
SHEET
MECH DETAILS & SCHEDULES
SHEET NUMBER

M3.1

SUPPLY SIDE DETECTORS
IF SUPPLY SIDE SMOKE DETECTORS ARE SHOWN ON DWG M11, AND CALLED FOR ON RTU SCHEDULE, THE CONTRACTOR IS TO RELOCATE FACTORY INSTALLED SUPPLY SMOKE DETECTOR FROM BLOWER SECTION TO DUCTWORK. SEE NOTES ON DWG M11.

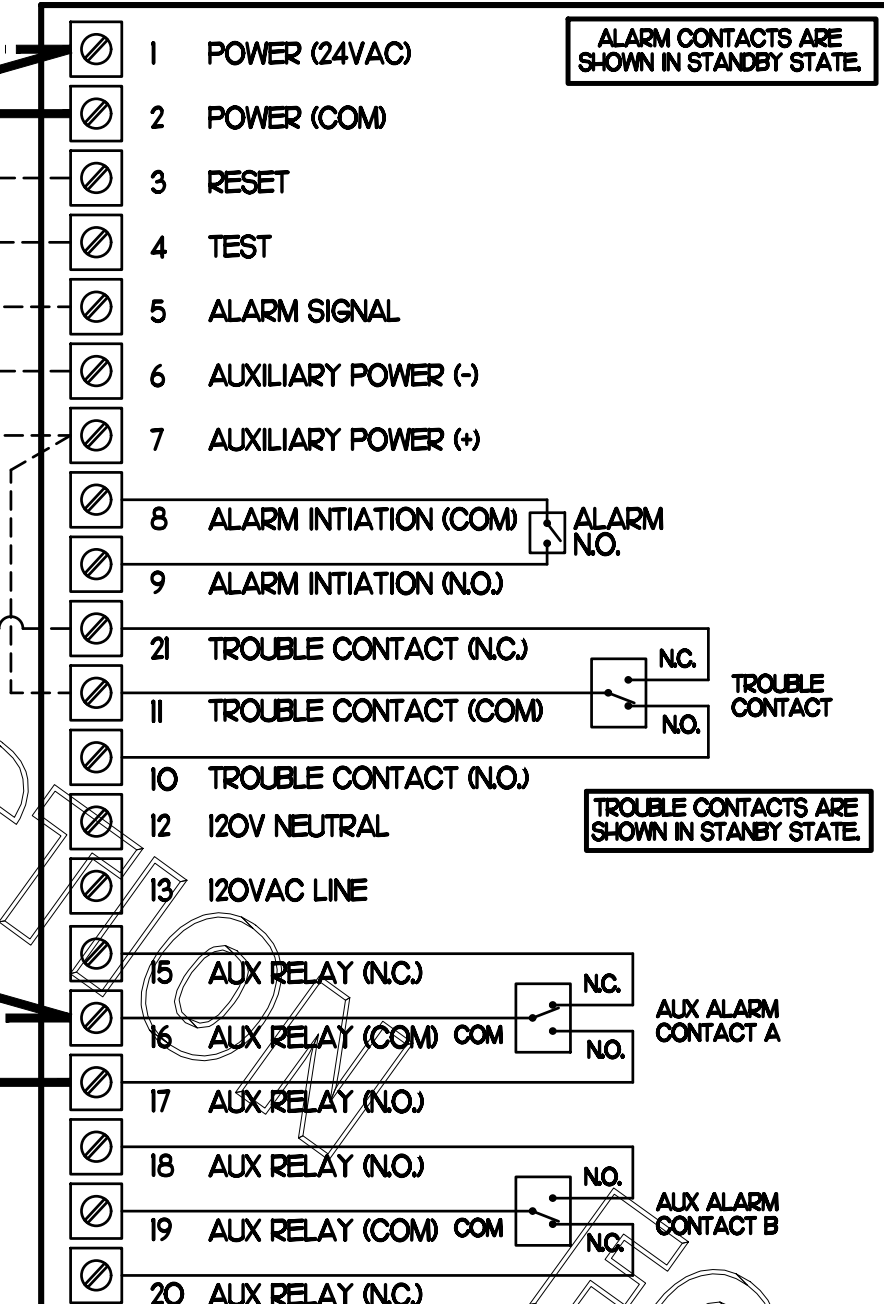
LEGEND
 - - - 18 AWG MIN WIRING BY MECH. CONTRACTOR
 - - - FACTORY ANNUNCIATOR DETECTOR WIRING
 - - - FACTORY LENNOX WIRING

LABELING
PROVIDE ENGRAVED LABEL WITH HIGH WHITE LETTERS ON BLACK BACKGROUND IDENTIFYING UNIT SERVED.



FIELD INSTALLED WIRING
WITHIN THE ROOFTOP UNIT, WIRING SHALL BE ROUTED BY WAY OF FACTORY WIREWAYS ONLY. WIRING ROUTED OVER THE BLOWER HOUSING OR BY WAY OF OTHER ROUTES DETRIMENTAL TO THE WIRING LIFE WILL NOT BE ACCEPTED.

LENNOX FACTORY WIRING
LENNOX FACTORY INSTALLED DUCT DETECTOR SYSTEM SENSOR MIN LD4120



LEGEND
 S.E.C. SUNCOAST ENVIRONMENTAL CONTROLS (SUPPLIER OF TEMP/FAN CONTROL PANEL) LOCATED IN KITCHEN
 KEY NOTE REFERENCE
 MC MECHANICAL CONTRACTOR
 AC SUNCOAST RELAY FACTORY INSTALLED AND WIRED IN CFA-500 PANEL, ENERGIZED BY PUTTING STORE SWITCH IN 'STORE OCCUPIED' POSITION.
 AN SUNCOAST RELAY FACTORY INSTALLED AND WIRED IN CFA-500 PANEL, DE-ENERGIZED WHEN ANSLI FIRE SUPPRESSION SYSTEM IS ACTIVATED, AS NOTED.
 22 AWG MIN LOW VOLTAGE WIRING BY MC, UNO, USE CONNECT-AIR SINGLE PAIR TWISTED WITH FOIL SHIELD AND DRAIN WIRE FOR TEMPERATURE SENSORS (NOT FOR HUMIDITY SENSORS)
 LOW VOLTAGE WIRING BY S.E.C.
 LINE VOLTAGE BY ELECTRICIAN OR S.E.C.

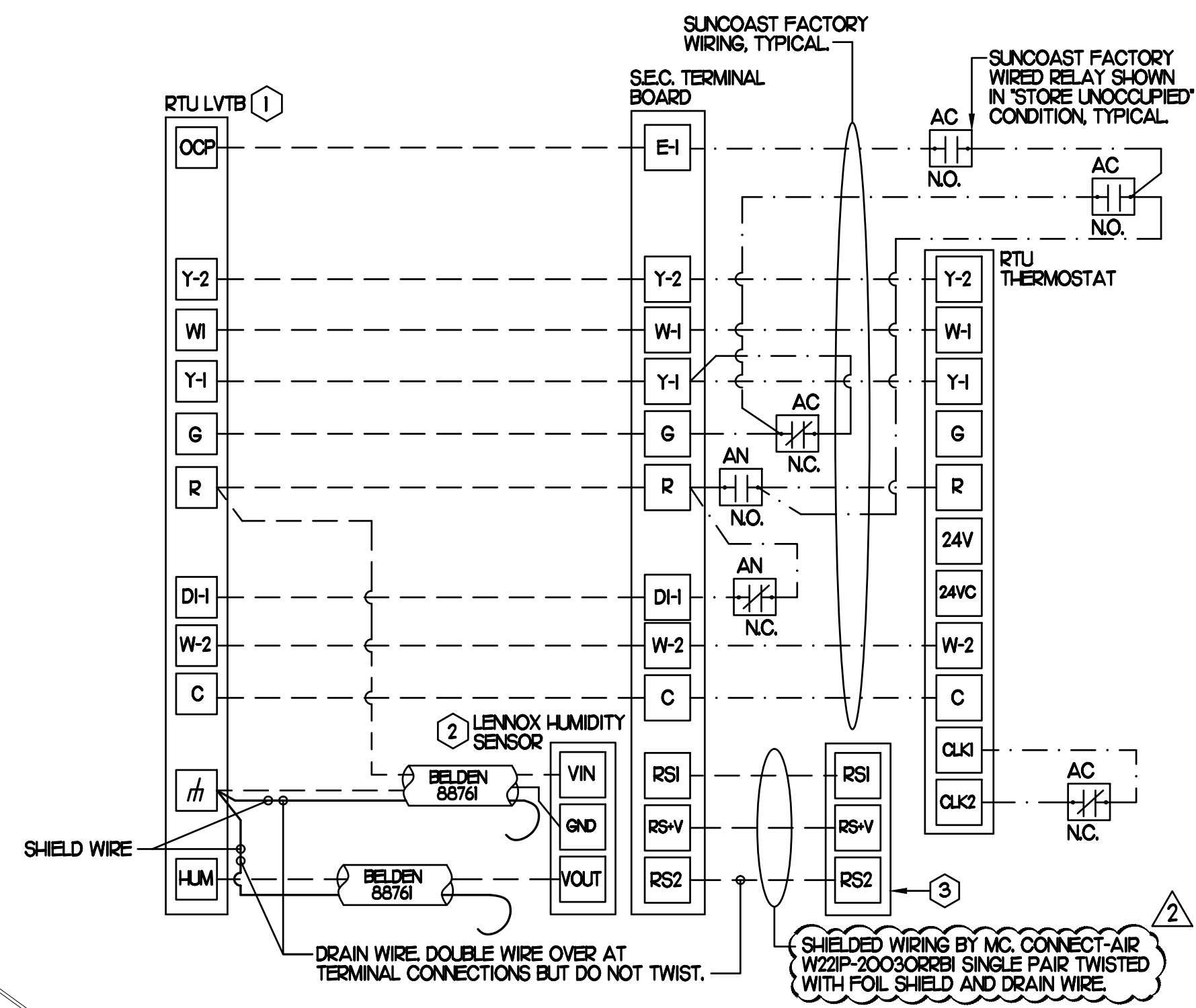
PROVIDE A PROFESSIONALLY LAMINATED COPY OF THESE DETAILS TO BE INSTALLED INSIDE THE ROOFTOP UNIT CONTROL CABINET. USE A SETON CHART FRAME STYLE #68624, TELEPHONE NUMBER 800-243-6624. FOR MOUNTING THE DETAIL, ATTACH THE FRAME TO THE INTERIOR OF THE UNIT IN PLAIN AND EASY VIEW OF THE CONTROLS SECTION. CONTACT ENGINEER OF RECORD FOR A REPRODUCIBLE COPY OF THE DETAIL.

- NOTES
- FOR ALL RTUS EXCEPT AT KITCHEN RTUS, CHANGE PRODIGY-M3 BOARD CONTROL PARAMETER #65 TO ZERO (#58 ON LCH UNITS). ON OLDER BOARDS THIS IS ECTO PARAMETER 3.01 FOR LCH UNITS OR ECTO 2.01 FOR LCH UNITS. THIS WILL CAUSE THE O.A. DAMPER TO OPEN ON 'OCCUPIED' START. AT KITCHEN RTUS (LCH TYPE) LEAVE THE SETTING AT THE DEFAULT VALUE SO THE O.A. DAMPER WILL REMAIN CLOSED FOR THE FIRST 60 MINUTES AFTER 'OCCUPIED' START. AT KITCHEN RTUS (LCH TYPE) CHANGE THE VALUE TO 5400 SO THE O.A. DAMPER WILL REMAIN CLOSED FOR THE FIRST 90 MINUTES AFTER 'OCCUPIED' START.
 - MECHANICAL CONTRACTOR SHALL MAKE PLASTIC LAMINATE OF THIS DETAIL AND INSTALL PERMANENTLY ON INSIDE DOOR OF ROOFTOP UNIT CONTROL COMPARTMENT.
 - SEE DETAILS THIS SHEET FOR SMOKE DETECTOR AND ANNUNCIATOR WIRING.
 - AT HUMIDITROL RTUS SET PRODIGY-M3 BOARD CONTROL PARAMETER #106 FOR DEHUMIDIFICATION SET POINT TO A VALUE OF 60 (#60 RH).
 - AT HUMIDITROL RTUS, SET PRODIGY-M3 BOARD CONTROL PARAMETER #107 FOR DEHUMIDIFICATION MODE DEAD BAND TO A VALUE OF 2 (#2 RH).
 - FOR MS4V UNITS, SET THE MS4V LOW SPEED SETTING TO THE SAME VALUE AS THE HIGH SPEED SETTING AFTER TAB IS COMPLETE.
 - PROVIDE PLASTIC ENGRAVED LABEL AT ALL NEW SENSORS WITH HIGH WHITE LETTERING ON BLACK BACKGROUND, I.E. 'AC#2 HUMIDITY SENSOR' OR 'AC#2 TEMP SENSOR'. PLACE LABELS ON WALL ADJACENT TO DEVICE. DO NOT APPLY DIRECTLY TO DEVICE.

- KEYED NOTES
- LOW VOLTAGE WIRING TO RTU TO BE ROUTED TO UNIT THRU FACTORY WIREWAY.
 - HUMIDITROL UNITS ONLY: WIRING TO HUMIDITY SENSOR TO BE MADE WITH TWO SEPARATE RUNS OF SHIELDED TWISTED PAIR, TERMINATE SHIELD WIRES AT TB4, LEAVE OPEN AT SENSOR.
 - NETWORK TSTAT REMOTE TEMP SENSOR PROVIDED BY SUNCOAST AND INSTALLED BY MC. FIELD CALIBRATE EACH SENSOR.

1 SMOKE DETECTOR AND ANNUNCIATOR WIRING DIAGRAM - LENNOX

NO SCALE



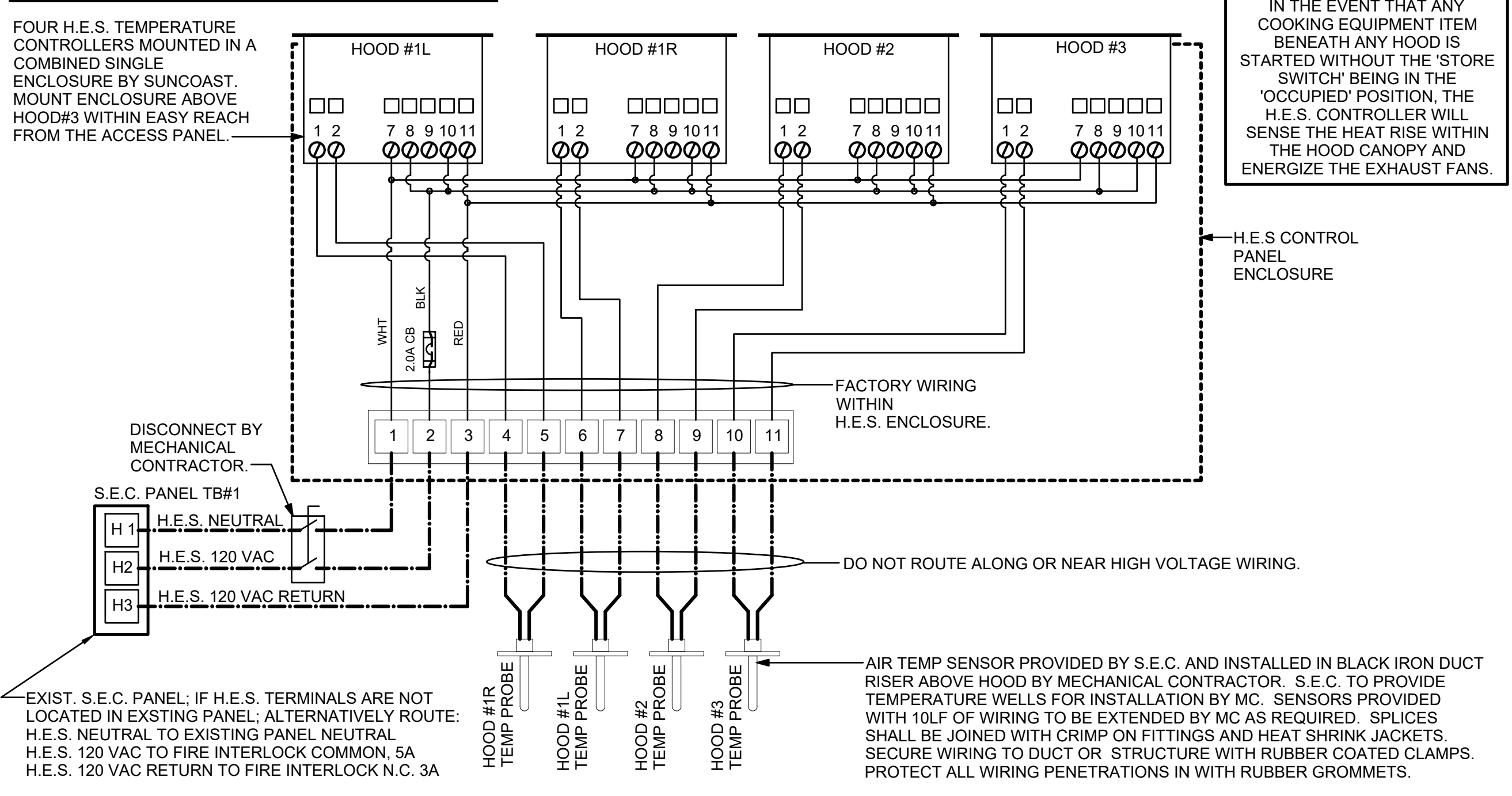
2 ROOFTOP UNIT CONTROL WIRING - LENNOX

NO SCALE

LEGEND
 S.E.C. SUNCOAST ENVIRONMENTAL CONTROLS CFA-500 ENERGY MGT PANEL
 H.E.S. SUNCOAST ENVIRONMENTAL CONTROLS HOOD EXHAUST SAFETY CONTROLLER
 M.C. MECHANICAL CONTRACTOR
 - - - 18 AWG MIN UNSHIELDED LOW VOLTAGE WIRING BY MC, U.N.O.
 - - - 120 VAC WIRING BY MECHANICAL CONTRACTOR

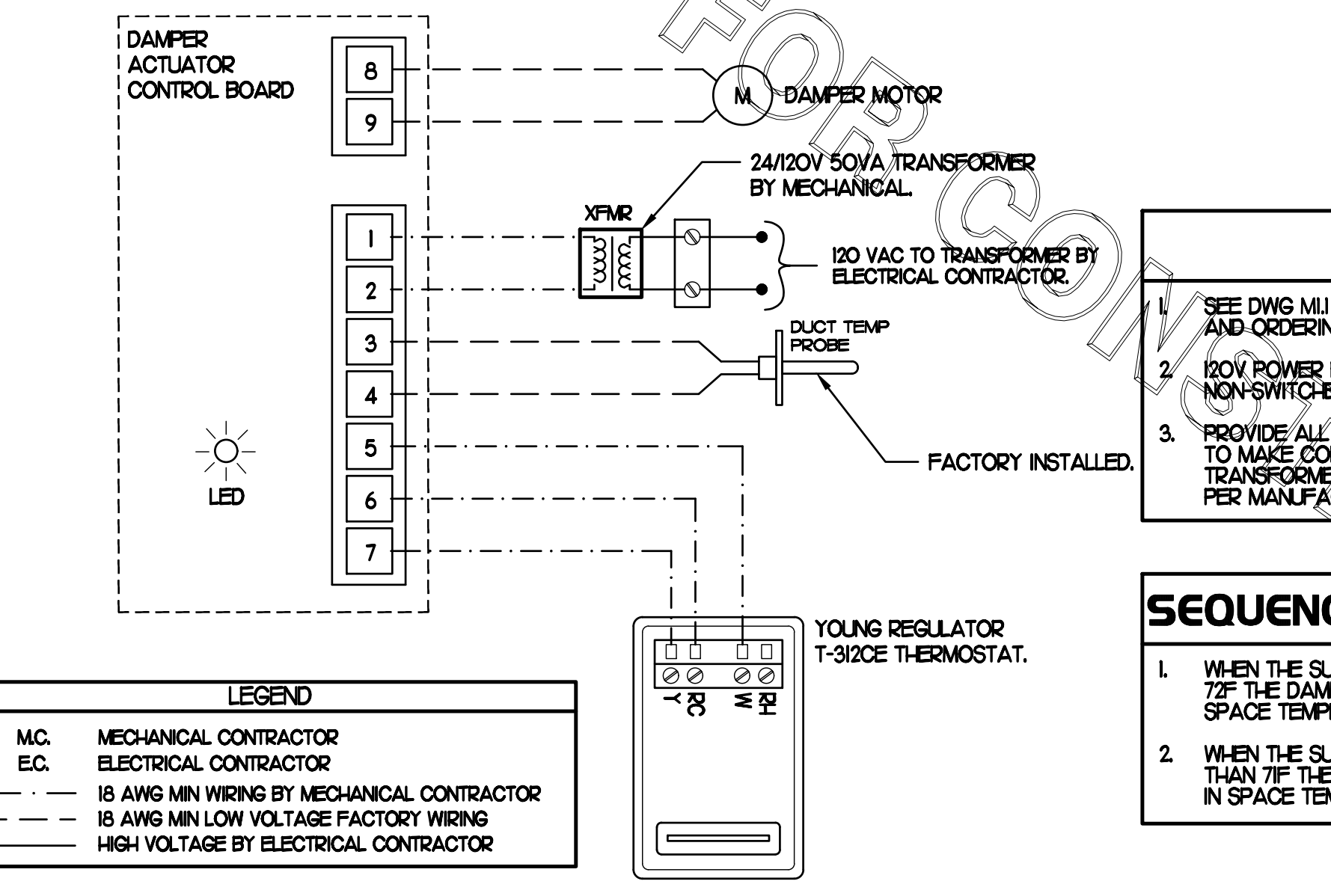
- GENERAL NOTES
- MECHANICAL CONTRACTOR TO PURCHASE THE H.E.S. CONTROL PANEL AND COMPONENTS FROM SUNCOAST ENVIRONMENTAL CONTROLS. TELEPHONE 877-544-8679.
 - CONTROLS COMPONENTS TO BE FACTORY MOUNTED IN LABELED NEMA-1 ENCLOSURES.
 - MECHANICAL CONTRACTOR TO PROVIDE A PROFESSIONALLY LAMINATED COPY OF THIS DETAIL ATTACHED TO THE ENCLOSURE. CONTACT ENGINEER OF RECORD FOR A REPRODUCIBLE COPY OF THE DETAIL.

S.E.C. H.E.S. OPERATION
 IN THE EVENT THAT ANY COOKING EQUIPMENT ITEM BENEATH ANY HOOD IS STARTED WITHOUT THE 'STORE SWITCH' BEING IN THE 'OCCUPIED' POSITION, THE H.E.S. CONTROLLER WILL SENSE THE HEAT RISE WITHIN THE HOOD CANOPY AND ENERGIZE THE EXHAUST FANS.



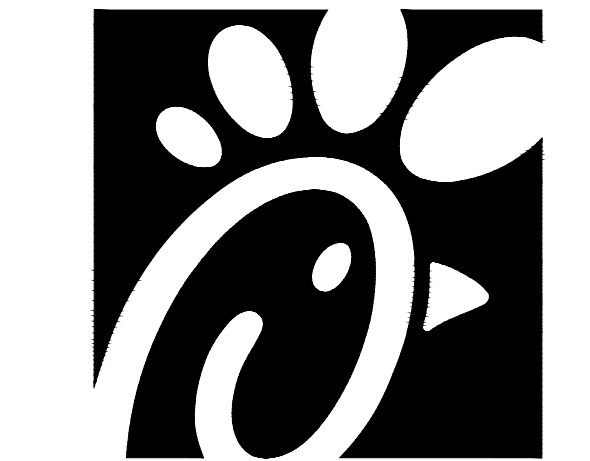
3 HOOD EXHAUST SAFETY SWITCH (H.E.S.) WIRING DIAGRAM

NO SCALE



4 OFFICE VAV DAMPER AND TSTAT

NO SCALE



Chick-fil-A
 5200 Buffington Road
 Atlanta, Georgia 30349

Kurzynske & Associates
 CONSULTING ENGINEERS
 2705 Lebanon Pike - Suite One
 Nashville, Tennessee 37214
 Telephone: (615) 255-5203

PROFESSIONAL ENGINEER
 Lic. No. 32021
 4-13-22

CHICK-FIL-A
 White Oak Village
 4443 S Laburnum Ave
 Richmond, VA 23231

FSR#02298

BUILDING TYPE / SIZE:	S06C	
RELEASE:	v11.21	
REVISION SCHEDULE		
NO.	DATE	DESCRIPTION
2	03/14/22	Pre-Bid Comments

CONSULTANT PROJECT # 22006.HF.R
 PRINTED FOR CONSTRUCTION
 DATE 01/25/2022
 DRAWN BY AK

Information contained on this drawing and in all digital files produced for above named project may not be reproduced in any manner without express written or verbal consent from authorized project representatives.
 SHEET HVAC CONTROLS
 SHEET NUMBER

M4.1

4

3

2

1

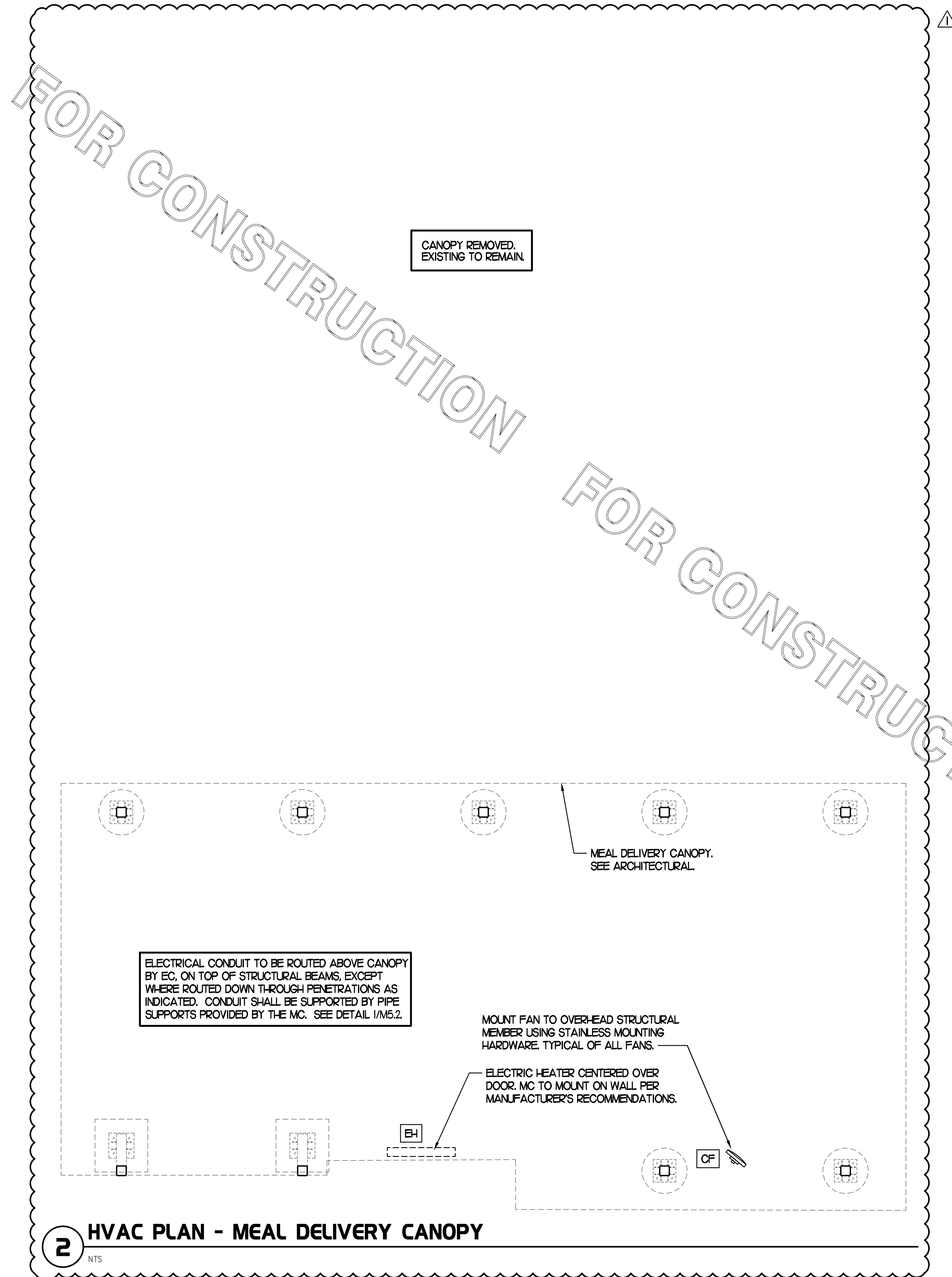
E

D

C

B

A



2

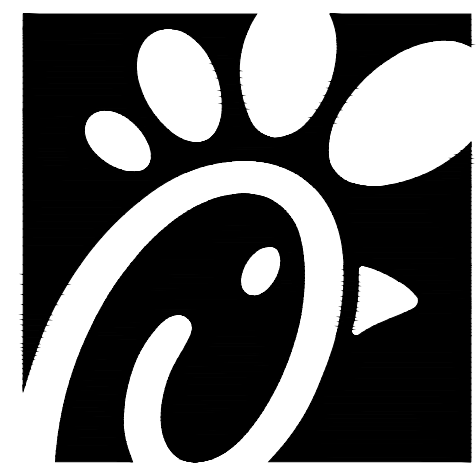
HVAC PLAN - MEAL DELIVERY CANOPY

NTS

LEGEND			
CF#	CIRCULATING FAN # (TYP)	B/G	BELOW GRADE
GH#	GAS INFRARED HEATER # (TYP)	EC	ELECTRICAL CONTRACTOR
	NEW GAS PIPING ABOVE GRADE	MC	MECHANICAL CONTRACTOR
	NEW GAS PIPING BELOW GRADE	---	CONDUIT ABOVE CANOPY DECK

GENERAL NOTES

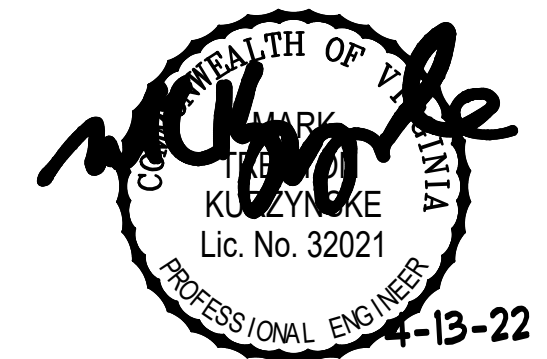
- COORDINATE NEW WORK WITH EXISTING CONDUIT, STRUCTURE, AND PIPING. FIELD VERIFY EXISTING CONDITIONS PRIOR TO START OF WORK.
- COORDINATE LOCATION AND RESPONSIBILITIES FOR UNDERGROUND PIPING AND ASSOCIATED TRENCHING WITH GENERAL CONTRACTOR PRIOR TO START OF WORK.
- EXPOSED GAS PIPING SHALL BE PAINTED BY GENERAL CONTRACTOR.
- ACTUAL NUMBER OF INFRARED HEATERS & COOLING FANS WILL BE DETERMINED BY SITE-SPECIFIC CANOPY LAYOUT AND EQUIPMENT LOCATIONS, AS INDICATED ON ARCHITECTURAL PLANS.
- CONTROL WIRING FOR HEATERS BY EC. COORDINATE WIRE GAUGE WITH EC. SEE ELECTRICAL AND CONTROLS DRAWINGS, TYP.



Chick-fil-A
5200 Buffington Road
Atlanta, Georgia 30349



Kurzynske & Associates
CONSULTING ENGINEERS
2705 Lebanon Pike - Suite One
Nashville, Tennessee 37214
Telephone: (615) 255-5203



CHICK-FIL-A
White Oak Village
4443 S Laburnum Ave
Richmond, VA 23231

FSR#02298

BUILDING TYPE / SIZE: S06C
RELEASE: v11.21

REVISION SCHEDULE		
NO.	DATE	DESCRIPTION
1	2/28/2022	Building Comments

CONSULTANT PROJECT # 22006.HF.R
PRINTED FOR CONSTRUCTION
DATE 01/25/2022
DRAWN BY AK

Information contained on this drawing and in all digital files produced for above named project may not be reproduced in any manner without express written or verbal consent from authorized project representatives.

SHEET
CANOPY HVAC
PLANS
SHEET NUMBER

M5.1

4

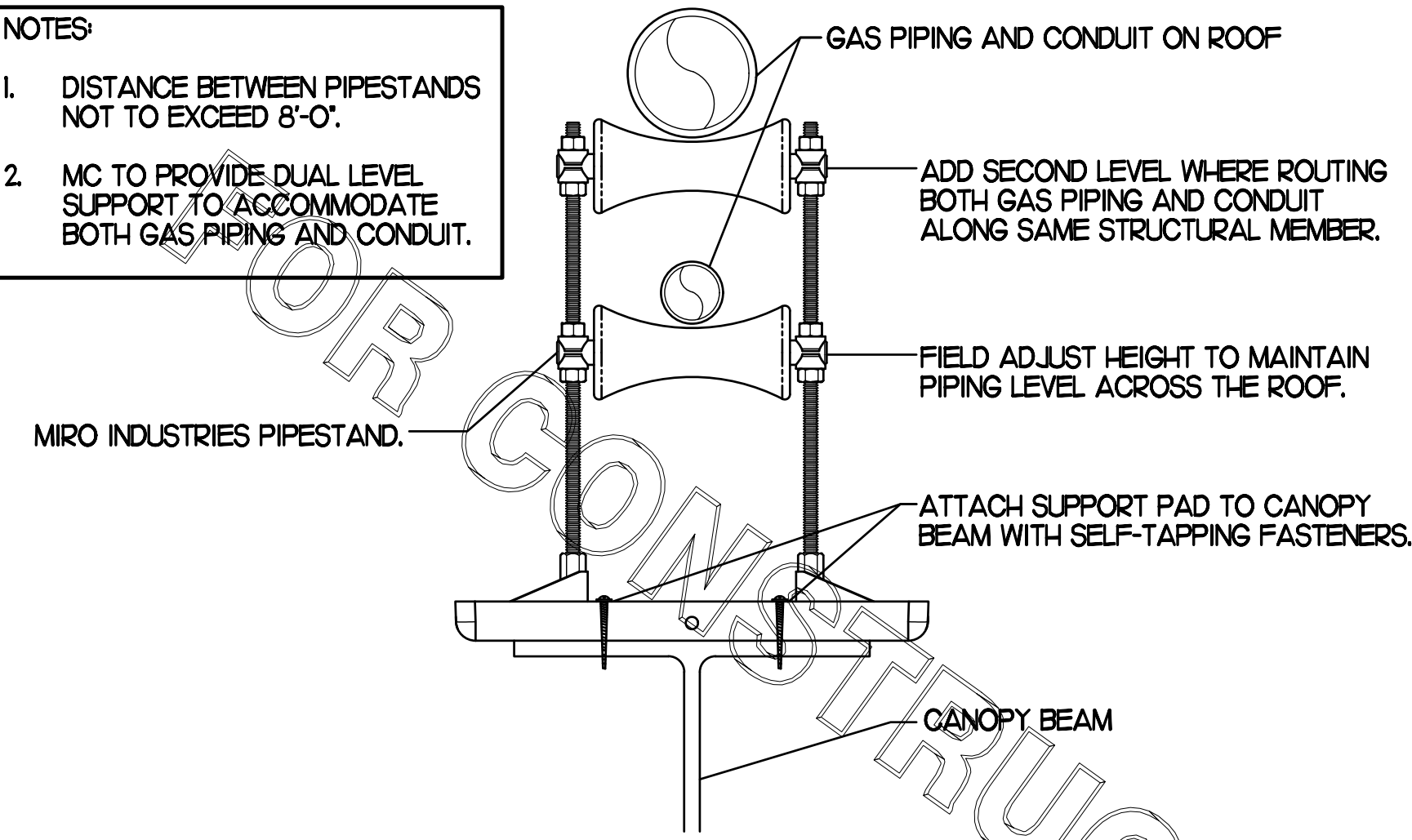
3

2

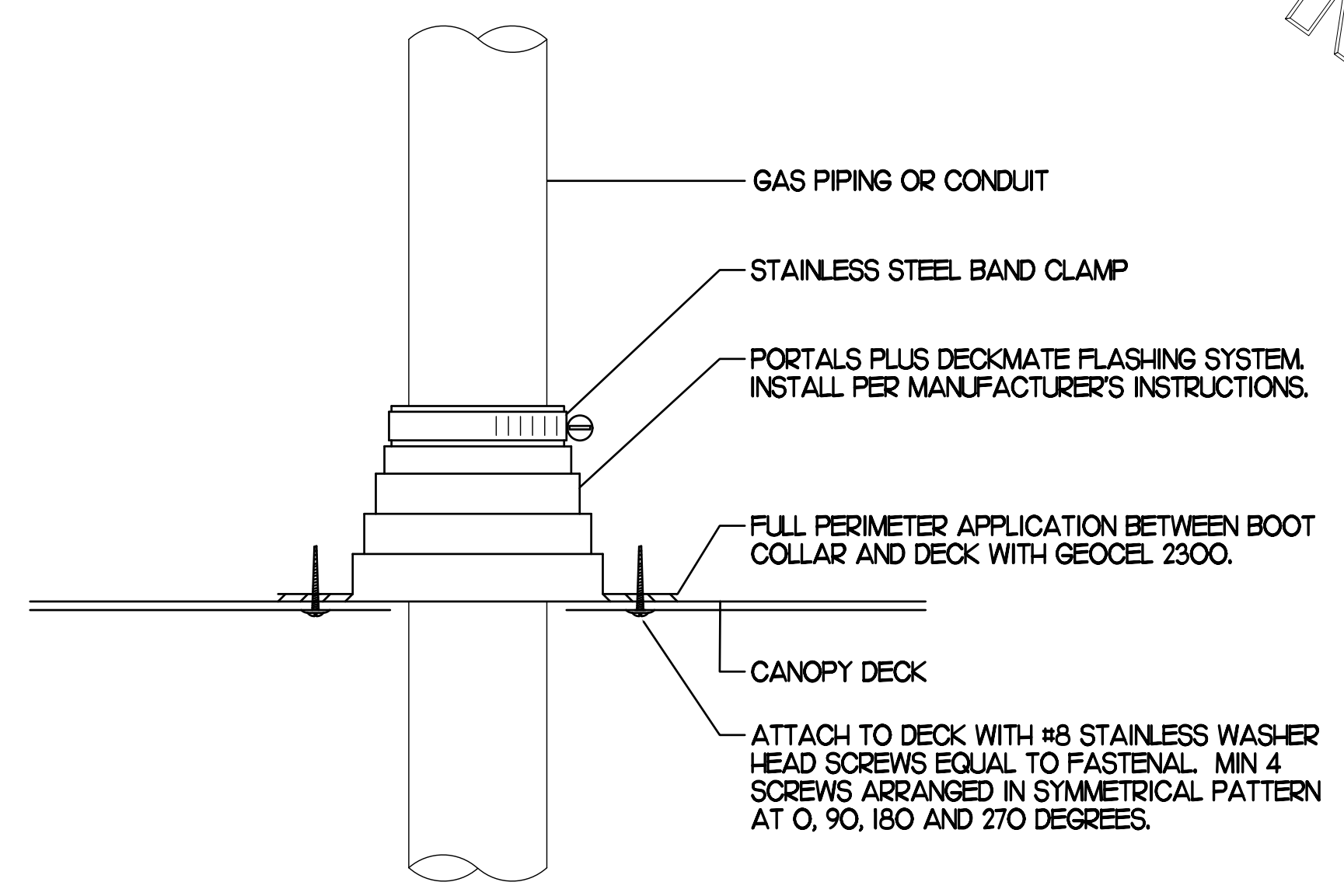
1

CONSTRUCTION

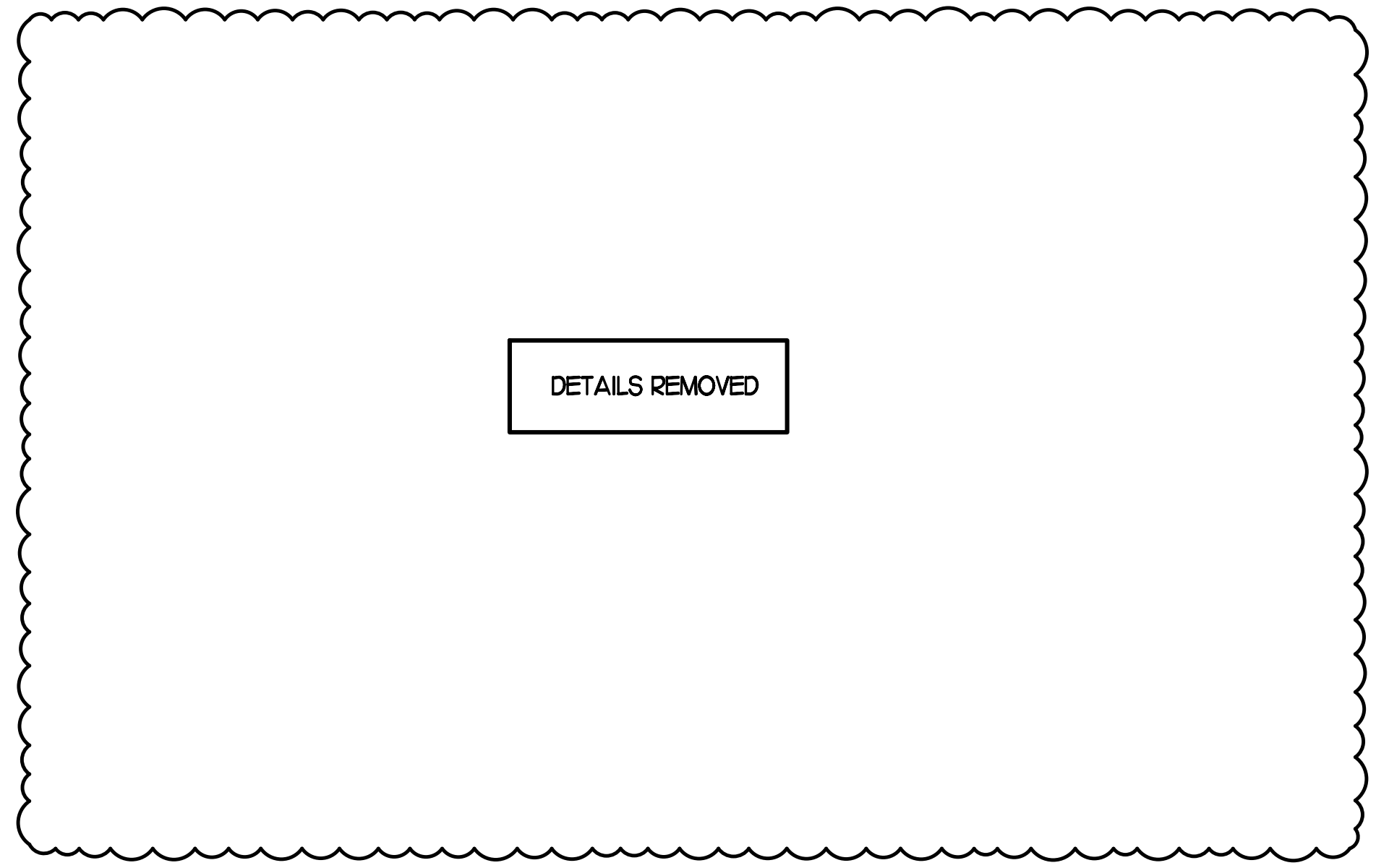
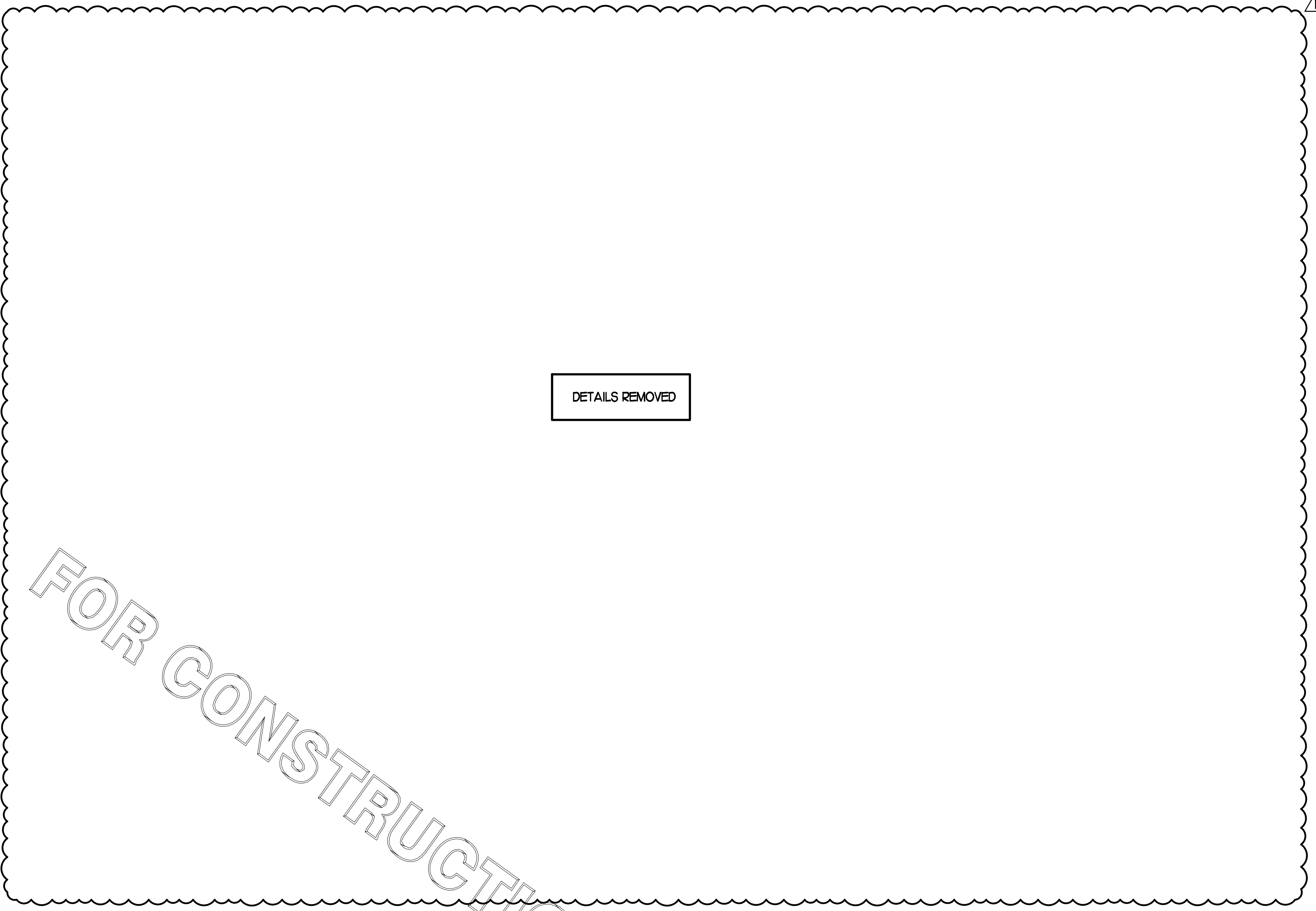
- NOTES**
- DISTANCE BETWEEN PIPESTANDS NOT TO EXCEED 8'-0".
 - MC TO PROVIDE DUAL LEVEL SUPPORT TO ACCOMMODATE BOTH GAS PIPING AND CONDUIT.



1 PIPING SUPPORT ON CANOPY
NO SCALE



2 WEATHERPROOFING AT CANOPY PENETRATION
NO SCALE



BROMIC ELECTRIC HEATER SCHEDULE

MARK	INPUT (KW)	FRAME SIZE			MOUNTING TYPE	MODEL	MANUFACTURER
		LENGTH	WIDTH	DEPTH			
ALL EH	6.0	56"	8.5"	3.5"	BRACKET	BH0420005	BROMIC
NOTES	<ul style="list-style-type: none"> CHICK-FIL-A HAS A NATIONAL ACCOUNT WITH BROMIC COMPANY FOR THE ELECTRIC HEATER PACKAGE. THE MECHANICAL CONTRACTOR SHALL PURCHASE THE ELECTRIC HEATERS DIRECTLY FROM BROMIC COMPANY. CONTACT MR. FRANK SARVER AT 858-400-4063, FOR PRICING AND AVAILABILITY. BROMIC HEATERS NOT PURCHASED THRU BROMIC COMPANY WILL NOT BE ACCEPTED. 						
REMARKS	<ol style="list-style-type: none"> STAINLESS STEEL LENS WITH BLACK EMISSIVE COATING. PROVIDE ENGRAVED PLASTIC LABEL AT EACH UNIT WITH UNIT DESIGNATION IN 1" HIGH WHITE LETTERS ON A BLACK BACKGROUND. PROVIDE WITH MOUNTING BRACKETS PER MANUFACTURER'S RECOMMENDATIONS. 						

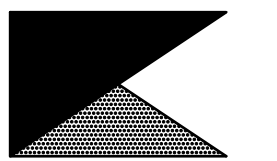
CIRCULATING FAN SCHEDULE

MARK	CFM	RPM	HP	MODEL	MANUFACTURER
REMARKS	<ol style="list-style-type: none"> ALUMINUM PADDLE WITH STEEL HUB/SPIDER PROPELLER. 360 DEG. ROTATING HEAD HORIZONTALLY AND VERTICALLY. OSHA COMPLIANT DOUBLE LOCKING, COATED STEEL WIRE GUARD. 3-SPEED, TOTALLY ENCLOSED, PERMANENTLY LUBRICATED BALL BEARING MOTOR. FACTORY PRE-WIRED POWER CORD. PROVIDE FACTORY WALL MOUNTING BRACKET. PROVIDE ENGRAVED PLASTIC LABEL AT EACH UNIT WITH UNIT DESIGNATION IN 1" HIGH WHITE LETTERS ON A BLACK BACKGROUND. MOUNT TO UNDERSIDE OF CANOPY OR EXISTING OVER-HANG, FACING DOWNWARD, 12" Laterally FROM THE FAN LOCATION. REMOVE PULL CHAIN EXTENSION AT ON/OFF SWITCH IN FIELD. FACTORY CERTIFIED FOR OUTDOOR INSTALLATION. 				

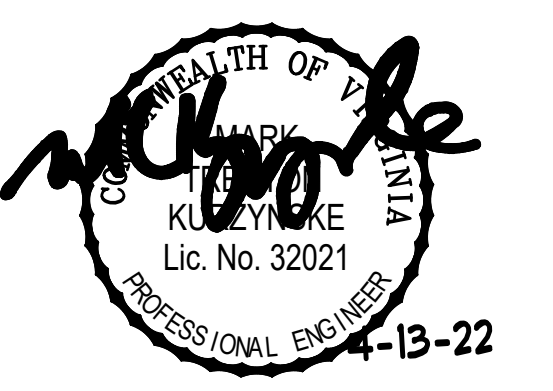


Chick-fil-A

Chick-fil-A
5200 Buffington Road
Atlanta, Georgia 30349



Kurzynske & Associates
CONSULTING ENGINEERS
2705 Lebanon Pike - Suite One
Nashville, Tennessee 37214
Telephone: (615) 255-5203



CHICK-FIL-A
White Oak Village
4443 S Laburnum Ave
Richmond, VA 23231

FSR#02298
BUILDING TYPE / SIZE: S06C
RELEASE: v11.21

REVISION SCHEDULE

NO.	DATE	DESCRIPTION
1	2/28/2022	Building Comments

CONSULTANT PROJECT # 22006.HF.R
PRINTED FOR CONSTRUCTION
DATE 01/25/2022
DRAWN BY AK

Information contained on this drawing and in all digital files produced for above named project may not be reproduced in any manner without express written or verbal consent from authorized project representatives.
SHEET
CANOPY DETAILS & SCHEDULES
SHEET NUMBER

CONSTRUCTION

M5.2

E

D

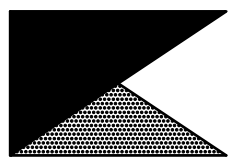
C

B

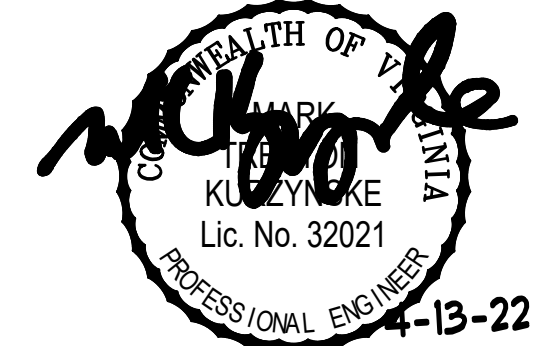
A



Chick-fil-A
 5200 Buffington Road
 Atlanta, Georgia 30349



Kurzynske & Associates
 CONSULTING ENGINEERS
 2705 Lebanon Pike - Suite One
 Nashville, Tennessee 37214
 Telephone: (615) 255-5203



CHICK-FIL-A
 White Oak Village
 4443 S Laburnum Ave
 Richmond, VA 23231

FSR#02298

BUILDING TYPE / SIZE: S06C
 RELEASE: v11.21

REVISION SCHEDULE		
NO.	DATE	DESCRIPTION
1	2/28/2022	Building Comments

CONSULTANT PROJECT #	22006.HF.R
PRINTED FOR	CONSTRUCTION
DATE	01/25/2022
DRAWN BY	AK

Information contained on this drawing and in all digital files produced for above named project may not be reproduced in any manner without express written or verbal consent from authorized project representatives.

SHEET
 MECH & ENVELOPE
 COMCHECK

SHEET NUMBER

M6.1

COMcheck Software Version 4.1.5.3
Envelope Compliance Certificate

Project Information

Energy Code: 2018 IECC
 Project Title: Chick-fil-A #2298
 Location: Richmond, Virginia
 Climate Zone: 4a
 Project Type: Addition
 Vertical Glazing / Wall Area: 4%

Construction Site: 4443 South Laburnum Avenue, Richmond, VA 23231
 Owner/Agent: Chick-fil-A, 5200 Buffington Road, Atlanta, GA 30349
 Designer/Contractor: Kurzynske & Associates, 2705 Lebanon Pike - Suite One, Nashville, TN 37214, 615-255-5203

Building Area

Building Area	Floor Area
1-Storage/Office (Dining, Cafeteria/Fast Food) : Nonresidential	575
2-Drive thru (Dining, Cafeteria/Fast Food) : Nonresidential	30

Envelope Assemblies

Assembly	Gross Area or Perimeter	Cavity R-Value	Cont. R-Value	Proposed U-Factor	Budget U-Factor
Roof 1: Insulated Extruded Polystyrene Deck, (Bldg. Use 1 - Storage/Office)	605	---	30.0	0.032	0.032
Floor 1: Slab-On-Grade Unfinished Vertical 2 ft., (Bldg. Use 1 - Storage/Office) (c)	112	---	10.0	0.540	0.540
Roof 2: Insulated Extruded Polystyrene Deck, (Bldg. Use 2 - Drive thru)	38	---	30.0	0.032	0.032
Floor 2: Slab-On-Grade Unfinished Vertical 2 ft., (Bldg. Use 2 - Drive thru) (c)	34	---	10.0	0.540	0.540
NORTH					
Exterior Wall 1: Wood-Framed, 16" o.c., (Bldg. Use 1 - Storage/Office)	182	20.0	0.0	0.064	0.064
Exterior Wall 5: Wood-Framed, 16" o.c., (Bldg. Use 2 - Drive thru)	182	20.0	0.0	0.064	0.064
Door 2: Glass (≤ 50% glazing)/Metal Frame/Weatherstripped Door, Part. Specs.: Product ID NA, SHGC 0.40, PF 1.20, (Bldg. Use 2 - Drive thru) (b)	21	---	---	0.770	0.450
EAST					
Exterior Wall 2: Wood-Framed, 16" o.c., (Bldg. Use 1 - Storage/Office)	285	20.0	0.0	0.064	0.064
Door 1: Insulated Metal, Swinging, (Bldg. Use 1 - Storage/Office)	28	---	---	0.330	0.610
SOUTH					
Exterior Wall 3: Wood-Framed, 16" o.c., (Bldg. Use 1 - Storage/Office)	182	20.0	0.0	0.064	0.064
WEST					
Exterior Wall 4: Wood-Framed, 16" o.c., (Bldg. Use 2 - Drive thru)	42	20.0	0.0	0.064	0.064

(a) Budget U-factors are used for software baseline calculations ONLY, and are not code requirements.
 (b) Fenestration product performance must be certified in accordance with NFRC and requires supporting documentation.
 (c) Slab-On-Grade proposed and budget U-factors shown in table are F-factors.

Envelope PASSES: Design 1% better than code

Envelope Compliance Statement

Compliance Statement: The proposed envelope design represented in this document is consistent with the building plans, specifications, and other calculations submitted with this permit application. The proposed envelope systems have been designed to meet the 2018 IECC requirements in COMcheck Version 4.1.5.3 and to comply with any applicable mandatory requirements listed in the Inspection Checklist.

MARK KURZYNSKE, P.E. Signature *mkurzynske* Date 03/09/22

COMcheck Software Version 4.1.5.3
Mechanical Compliance Certificate

Project Information

Energy Code: 2018 IECC
 Project Title: Chick-fil-A #2298
 Location: Richmond, Virginia
 Climate Zone: 4a
 Project Type: Addition

Construction Site: 4443 South Laburnum Avenue, Richmond, VA 23231
 Owner/Agent: Chick-fil-A, 5200 Buffington Road, Atlanta, GA 30349
 Designer/Contractor: Kurzynske & Associates, 2705 Lebanon Pike - Suite One, Nashville, TN 37214, 615-255-5203

Mechanical Systems List

Quantity	System Type & Description
1	ACR1 (25 ton) (Single Zone): Heating: 1 each - Central Furnace, Gas, Capacity = 384 kBtu/h Proposed Efficiency = 80.00% Et, Required Efficiency: 80.00 % Et Cooling: 1 each - Single Package DX Unit, Capacity = 282 kBtu/h, Air-Cooled Condenser, Air Economizer Proposed Efficiency = 10.50 EER, Required Efficiency: 9.80 EER + 11.4 IEER Fan System: 25 ton Kitchen - Compliance (Motor nameplate HP method) : Passes Fans: Supply Supply, Constant Volume, 8500 CFM, 7.5 motor nameplate hp, 0.0 fan efficiency grade Exhaust Exhaust, Constant Volume, 1800 CFM, 0.7 motor nameplate hp, 0.0 fan efficiency grade
1	ACR2 (8.5 ton) (Single Zone): Heating: 1 each - Central Furnace, Gas, Capacity = 192 kBtu/h Proposed Efficiency = 80.00% Et, Required Efficiency: 80.00 % Et or 80% AFUE Cooling: 1 each - Single Package DX Unit, Capacity = 100 kBtu/h, Air-Cooled Condenser, Air Economizer Proposed Efficiency = 12.20 EER, Required Efficiency: 11.00 EER + 12.6 IEER Fan System: 8.5 ton Dining - Compliance (Motor nameplate HP method) : Passes Fans: Supply Supply, Constant Volume, 2630 CFM, 2.0 motor nameplate hp, 0.0 fan efficiency grade Exhaust Exhaust, Constant Volume, 750 CFM, 0.3 motor nameplate hp, 0.0 fan efficiency grade
1	ACR3 (7.5 ton) (Single Zone): Heating: 1 each - Central Furnace, Gas, Capacity = 192 kBtu/h Proposed Efficiency = 80.00% Et, Required Efficiency: 80.00 % Et or 80% AFUE Cooling: 1 each - Single Package DX Unit, Capacity = 91 kBtu/h, Air-Cooled Condenser, Air Economizer Proposed Efficiency = 12.50 EER, Required Efficiency: 11.00 EER + 12.6 IEER Fan System: 7.5 ton Dining - Compliance (Motor nameplate HP method) : Passes Fans: Supply Supply, Constant Volume, 2765 CFM, 2.0 motor nameplate hp, 0.0 fan efficiency grade Exhaust Exhaust, Constant Volume, 600 CFM, 0.3 motor nameplate hp, 0.0 fan efficiency grade
1	ACR4 (10 ton) (Single Zone): Heating: 1 each - Central Furnace, Gas, Capacity = 192 kBtu/h Proposed Efficiency = 80.00% Et, Required Efficiency: 80.00 % Et or 80% AFUE Cooling: 1 each - Single Package DX Unit, Capacity = 124 kBtu/h, Air-Cooled Condenser, Air Economizer Proposed Efficiency = 12.00 EER, Required Efficiency: 11.00 EER + 12.6 IEER Fan System: 10 ton Dining - Compliance (Motor nameplate HP method) : Passes

Mechanical Compliance Statement

Compliance Statement: The proposed mechanical design represented in this document is consistent with the building plans, specifications, and other calculations submitted with this permit application. The proposed mechanical systems have been designed to meet the 2018 IECC requirements in COMcheck Version 4.1.5.3 and to comply with any applicable mandatory requirements listed in the Inspection Checklist.

MARK KURZYNSKE, P.E. Signature *mkurzynske* Date 03/09/22

FOR CONSTRUCTION

NOTE:
FIRE SUPPRESSION PLAN SHALL BE SUBMITTED
WITH FIRE PERMIT APPLICATION.

MODEL: KVL-2-IC

STANDARD FEATURES

- 4 S.S. FILTERS (KSA)
- 1 1/2 S.S. FILTERS (KSA)
- CAPTURE-JET
- STAND-OFF
- 1 L.E.D. LIGHTS

OPTIONS

- REMOTE SWITCH PANEL
- FIRE PROTECTION
- ETL LISTED V/V EXHAUST DAMPER
- CEILING CLOSURE
- 2 STD. BACKSLASH
- INSULATED BACKSLASH
- MSD DAMPER

MATERIAL

- EXPOSED SURFACES 18 GA. S.S.
- ALL 18 GA. S.S.

COMMENTS:

- CLOSURE HEIGHT = TRO (TWO SIDED)
- CLOSURE HEIGHT = ADVISE (CEILING CLOSURE REQUIRED) 1" FROM FRONT TO CREATE SHELF
- FRONT CLOSURE PANEL WITH LEFT SIDE ACCESS TO HOOD, TYPICAL 2" HINGE
- 18" X 18" ACCESS DOOR RIGHT SIDE OF CAPTURE-JET W/ FRONT D.J. INTAKE
- CONTINUOUS CAPTURE INTERNAL RIGHT END
- 1" THICK INSULATION / NOTCHED LEFT END PANEL
- REAR STAND-OFF TO HAVE 1" THICK INSULATION
- EQUIPMENT COVERED
- PRESSURE RYERS
- 11" WALL
- HOOD WEIGHT = 80 LBS
- HOOD WEIGHT = 300 LBS

DATE	DWG. NO.	ITEM NO.	EXHAUST AIR INFORMATION
01.12.22	U22-023-01	H-1L	CFM TALK SP
PROJECT: CHICK-FIL-A #2298			
PROJECT: WHITE OAK VILLAGE			
LOCATION: RICHMOND, VA			
SUBMITTED BY: HALTON CO.			

MODEL: KVL-2-IC

STANDARD FEATURES

- 3 S.S. FILTERS (KSA)
- 1 1/2 S.S. FILTERS (KSA)
- CAPTURE-JET
- STAND-OFF
- 1 L.E.D. LIGHTS

OPTIONS

- REMOTE SWITCH PANEL
- FIRE PROTECTION
- ETL LISTED V/V EXHAUST DAMPER
- CEILING CLOSURE
- 2 STD. BACKSLASH
- INSULATED BACKSLASH
- MSD DAMPER

MATERIAL

- EXPOSED SURFACES 18 GA. S.S.
- ALL 18 GA. S.S.

COMMENTS:

- CLOSURE HEIGHT = TRO (TWO SIDED)
- CLOSURE HEIGHT = ADVISE (CEILING CLOSURE REQUIRED) 1" FROM FRONT TO CREATE SHELF
- FRONT CLOSURE PANEL WITH LEFT SIDE ACCESS TO HOOD, TYPICAL 2" HINGE
- 18" X 18" ACCESS DOOR RIGHT SIDE OF CAPTURE-JET W/ FRONT D.J. INTAKE & MSD DAMPER
- CONTINUOUS CAPTURE INTERNAL LEFT END
- OUTLET
- PULL RIGHT END PANEL
- 1" REAR STAND-OFF TO HAVE 1" THICK INSULATION
- EQUIPMENT COVERED
- PRESSURE RYERS
- 11" WALL
- HOOD WEIGHT = 40 LBS
- HOOD WEIGHT = 200 LBS

DATE	DWG. NO.	ITEM NO.	EXHAUST AIR INFORMATION
01.12.22	U22-023-01	H-1R	CFM TALK SP
PROJECT: CHICK-FIL-A #2298			
PROJECT: WHITE OAK VILLAGE			
LOCATION: RICHMOND, VA			
SUBMITTED BY: HALTON CO.			

MODEL: KVL-C-IC

STANDARD FEATURES

- 2 S.S. FILTERS (KSA)
- CAPTURE-JET
- STAND-OFF
- 1 L.E.D. LIGHTS

OPTIONS

- REMOTE SWITCH PANEL
- FIRE PROTECTION
- ETL LISTED V/V EXHAUST DAMPER
- CEILING CLOSURE
- 2 STD. BACKSLASH
- INSULATED BACKSLASH
- MSD DAMPER

MATERIAL

- EXPOSED SURFACES 18 GA. S.S.
- ALL 18 GA. S.S.

COMMENTS:

- CLOSURE HEIGHT = TRO (TWO SIDED)
- CLOSURE HEIGHT = ADVISE (CEILING CLOSURE REQUIRED) 1" FROM FRONT TO CREATE SHELF
- 18" X 18" ACCESS DOOR OPENING AT CAPTURE-JET W/ FRONT D.J. INTAKE
- NOTCHED LEFT END PANEL
- DOUBLE RESEALABLE PIN B & B
- 1" REAR STAND-OFF FOR STAND-OFF ON RIGHT END SIDE & REAR STAND-OFF TO HAVE 1" THICK INSULATION
- EQUIPMENT COVERED
- 12" PLYERS
- HOOD WEIGHT = 300 LBS

DATE	DWG. NO.	ITEM NO.	EXHAUST AIR INFORMATION
01.12.22	U22-023-01	H-2	CFM TALK SP
PROJECT: CHICK-FIL-A #2298			
PROJECT: WHITE OAK VILLAGE			
LOCATION: RICHMOND, VA			
SUBMITTED BY: HALTON CO.			

MODEL: KVL-C-IC

STANDARD FEATURES

- 2 S.S. FILTERS (KSA)
- CAPTURE-JET
- STAND-OFF
- 1 L.E.D. LIGHTS

OPTIONS

- REMOTE SWITCH PANEL
- FIRE PROTECTION
- ETL LISTED V/V EXHAUST DAMPER
- CEILING CLOSURE
- 2 STD. BACKSLASH
- INSULATED BACKSLASH
- MSD DAMPER

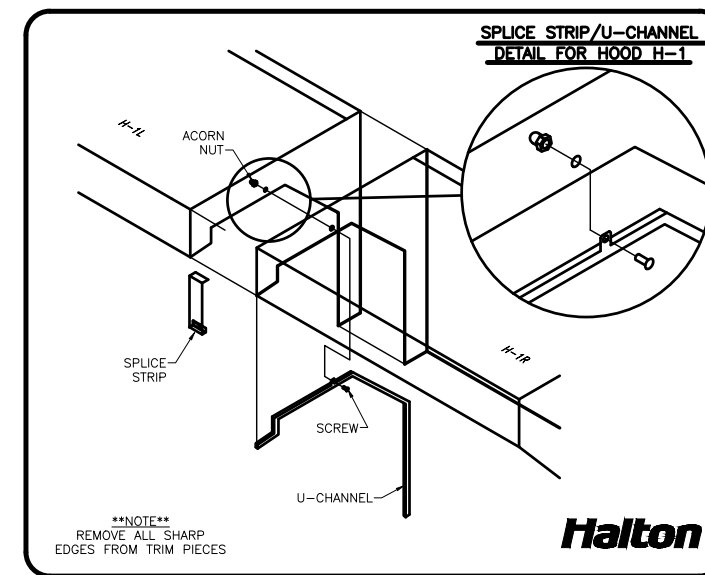
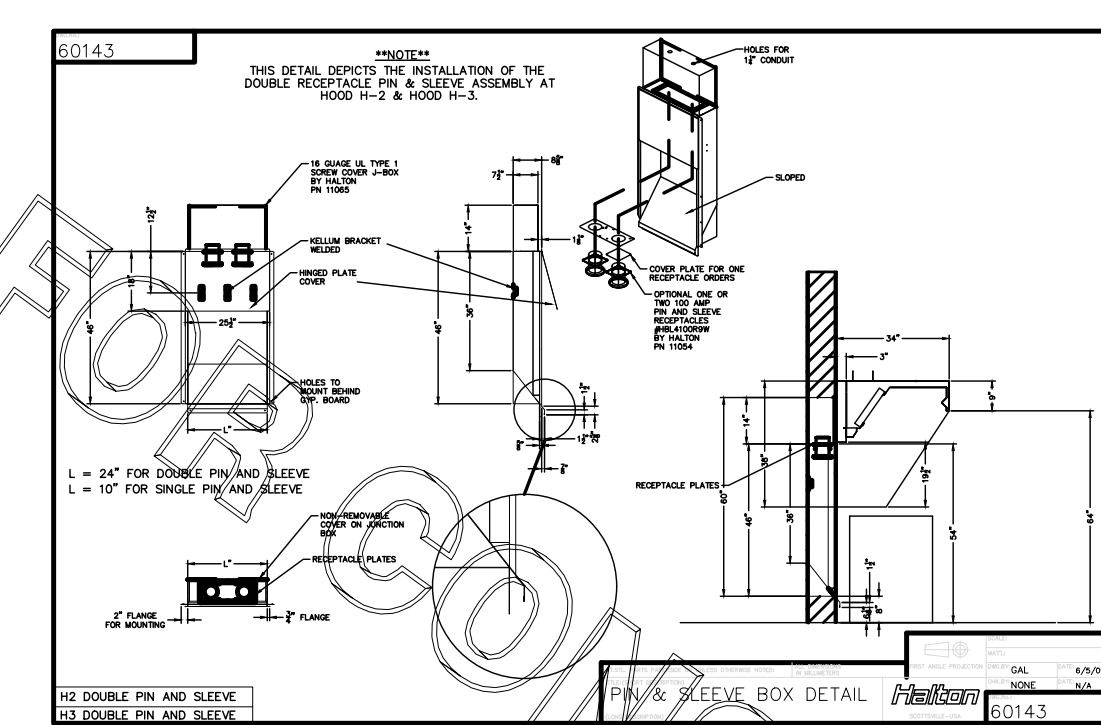
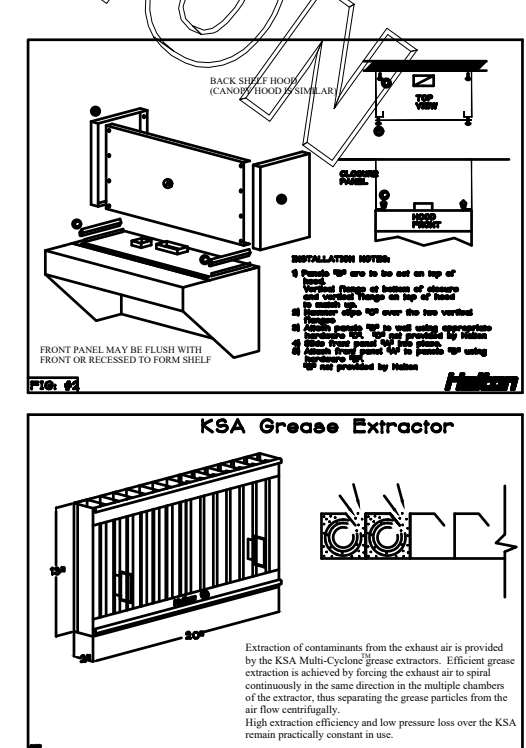
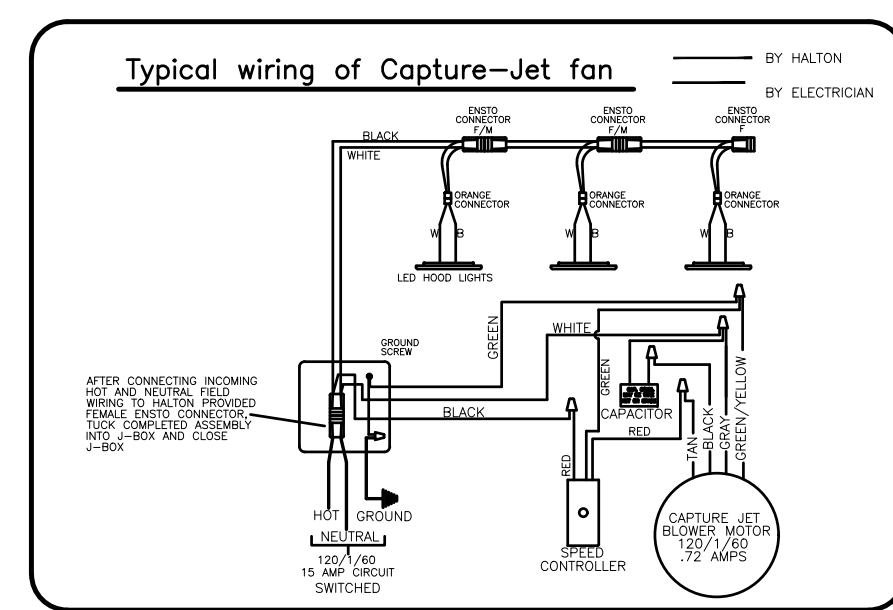
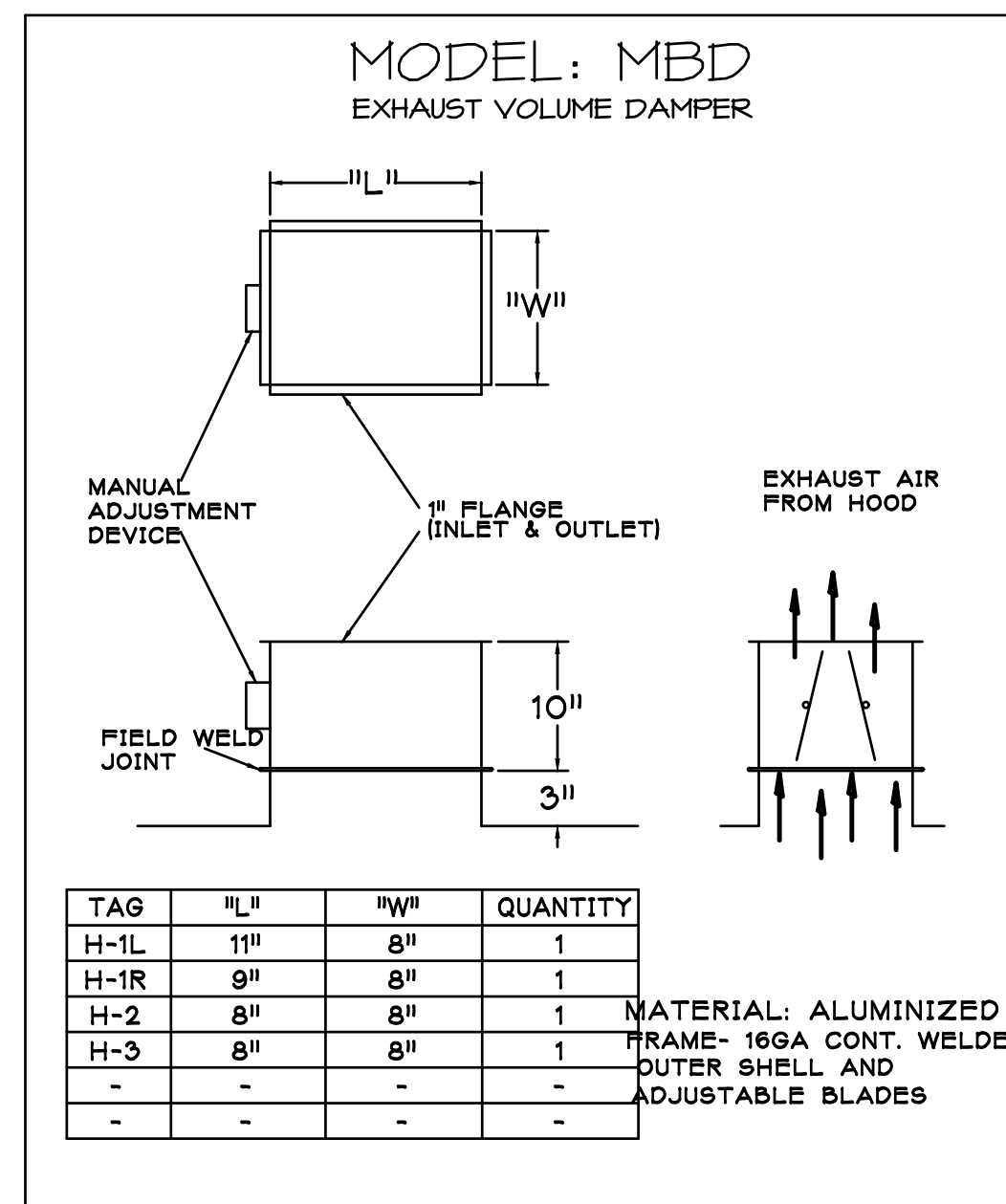
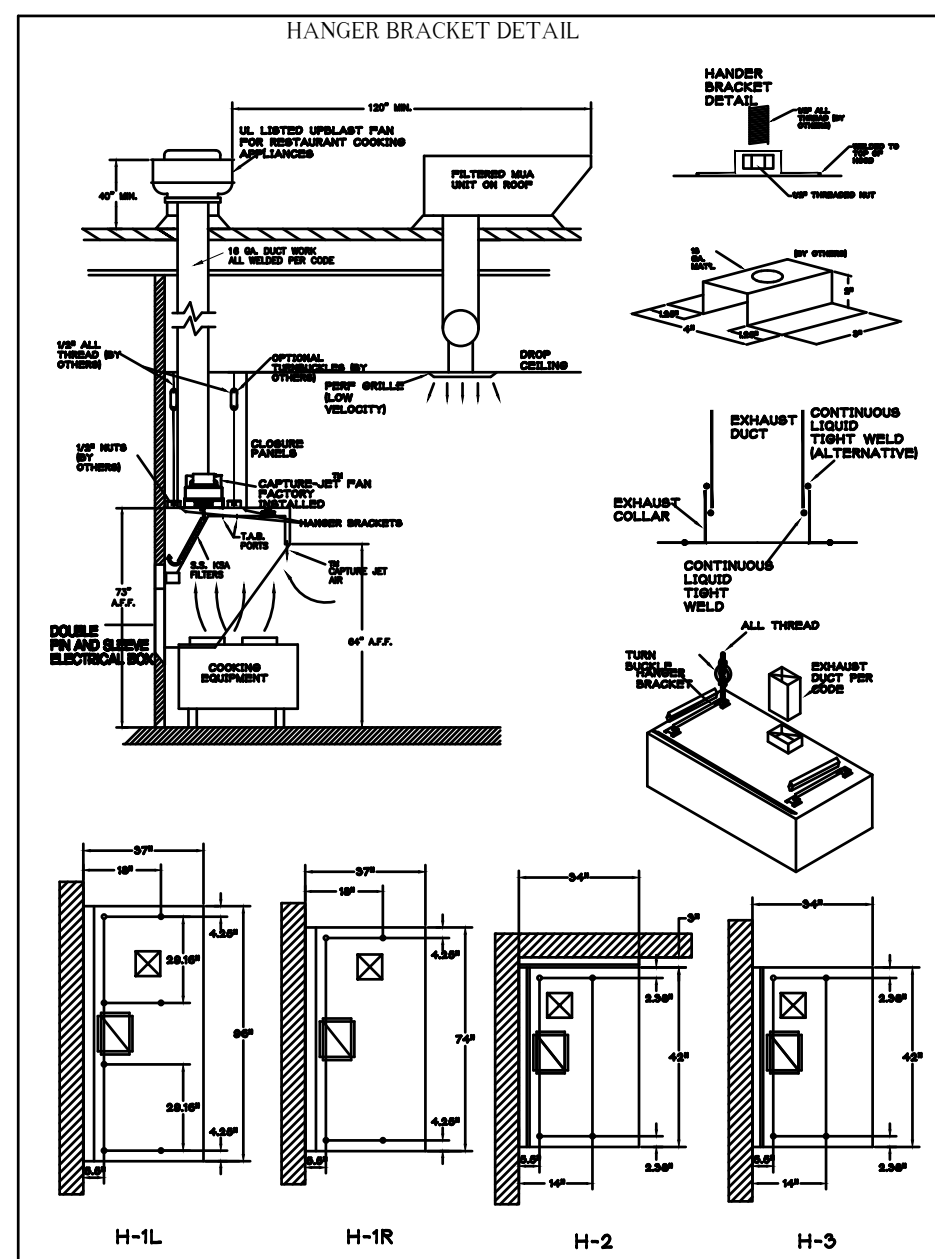
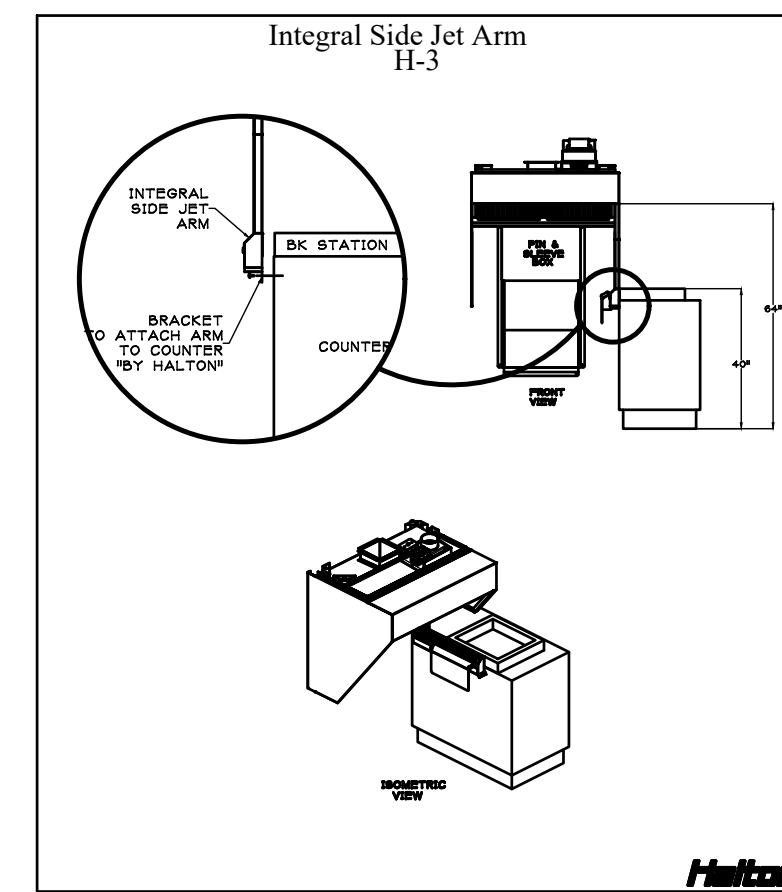
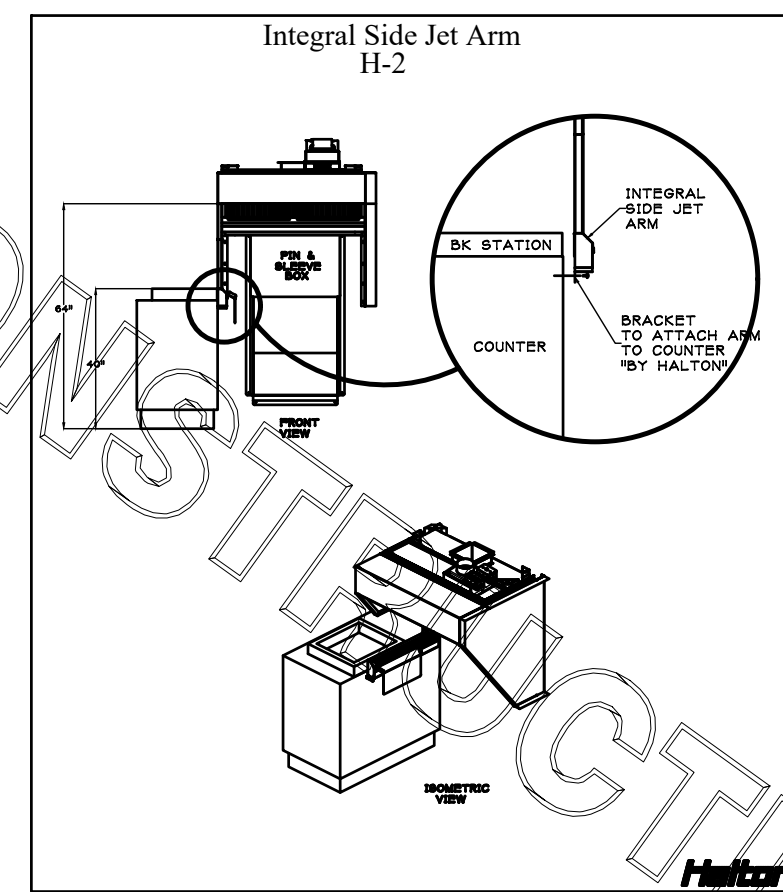
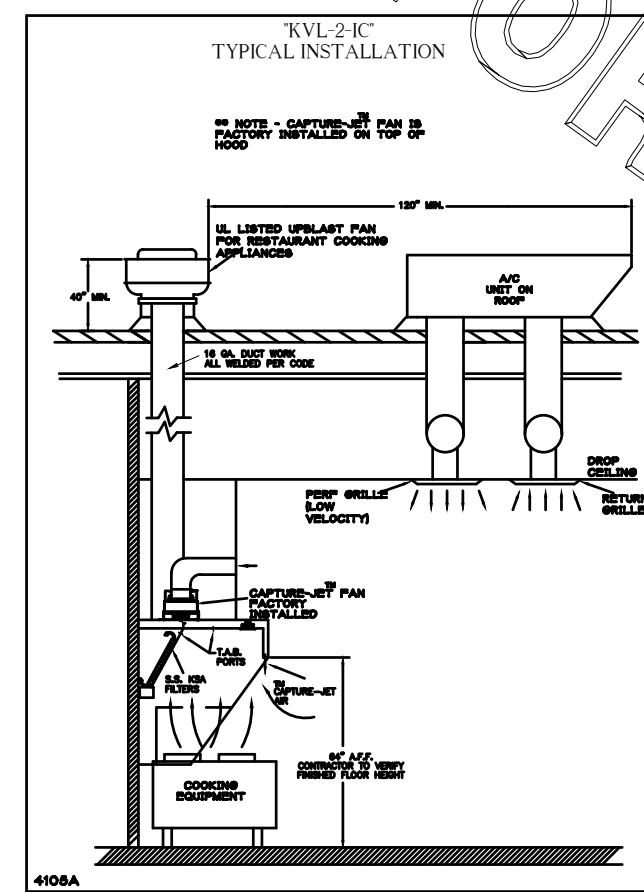
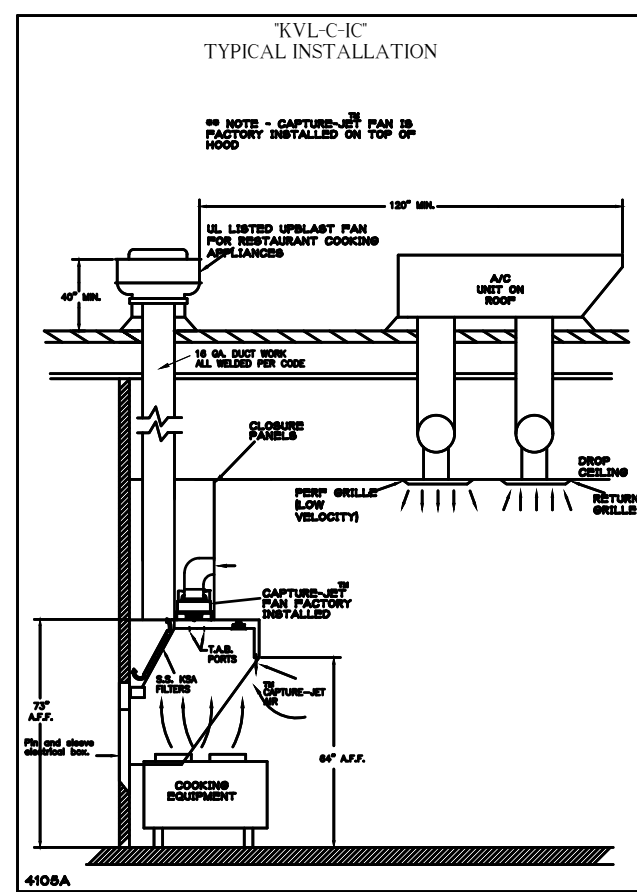
MATERIAL

- EXPOSED SURFACES 18 GA. S.S.
- ALL 18 GA. S.S.

COMMENTS:

- CLOSURE HEIGHT = TRO (TWO SIDED)
- CLOSURE HEIGHT = ADVISE (CEILING CLOSURE REQUIRED) 1" FROM FRONT TO CREATE SHELF
- 18" X 18" ACCESS DOOR OPENING AT CAPTURE-JET W/ FRONT D.J. INTAKE
- NOTCHED RIGHT END PANEL
- DOUBLE RESEALABLE PIN B & B
- 1" REAR STAND-OFF FOR STAND-OFF ON LEFT END SIDE & REAR STAND-OFF TO HAVE 1" THICK INSULATION
- EQUIPMENT COVERED
- 12" PLYERS
- HOOD WEIGHT = 300 LBS

DATE	DWG. NO.	ITEM NO.	EXHAUST AIR INFORMATION
01.12.22	U22-023-01	H-3	CFM TALK SP
PROJECT: CHICK-FIL-A #2298			
PROJECT: WHITE OAK VILLAGE			
LOCATION: RICHMOND, VA			
SUBMITTED BY: HALTON CO.			



HALTON HOODS
- ETL LISTED PER
LATEST IFO STANDARD
- BUILT PER NFPA 96
- NSF LISTED

NSF Halton

NSF International
ANSI Z390.1
NSF-1
NSF-2
NSF-3

NSF LISTED
ETL LISTED
UL LISTED

THIS DRAWING MUST BE CHECKED, SIGNED AND RETURNED TO THE APPROPRIATE FACTORY. PLEASE VERIFY THE FOLLOWING INFORMATION, MOUNTING POSITIONS AND TYPE OF COOKING EQUIPMENT.

NOTE TO APPROVER:
1. ALL DIMENSIONAL INFORMATION, MOUNTING POSITIONS AND TYPE OF COOKING EQUIPMENT.
2. THE LOCATION AND TYPE OF COOKING EQUIPMENT.
3. THE LOCATION AND TYPE OF COOKING EQUIPMENT.
4. THE LOCATION AND TYPE OF COOKING EQUIPMENT.
5. THE LOCATION AND TYPE OF COOKING EQUIPMENT.
6. THE LOCATION AND TYPE OF COOKING EQUIPMENT.
7. THE LOCATION AND TYPE OF COOKING EQUIPMENT.
8. THE LOCATION AND TYPE OF COOKING EQUIPMENT.
9. THE LOCATION AND TYPE OF COOKING EQUIPMENT.
10. THE LOCATION AND TYPE OF COOKING EQUIPMENT.

APPROVED FOR FABRICATION: WITH NO CHANGES WITH CHANGES AS NOTED

UL LISTED
ETL LISTED
NSF LISTED

REVISION	DESCRIPTION	DATE	BY
1			
2			
3			
4			
5			
6			
7			

MAIL APPROVED DRAWINGS TO APPROPRIATE FACTORY BELOW:

HALTON CO. (USA)
1000 W. LAW 367
SCOTTSVILLE, KY 42164
1-905-624-0301

HALTON CO. (CANADA)
3600 W. LAW 367
SCOTTSVILLE, KY 42164
1-905-624-0301

PROJECT: CHICK-FIL-A #2298
WHITE OAK VILLAGE
LOCATION: RICHMOND, VA
DRAWN BY: AF
DATE: 01.12.22
SCALE: NTS
Halton Dwg: U22-023-01

Halton
CARE FOR INDOOR AIR



Chick-fil-A
5200 Buffington Road
Atlanta, Georgia 30349

Kurzynske & Associates
CONSULTING ENGINEERS
2705 Lebanon Pike - Suite One
Nashville, Tennessee 37214
Telephone: (615) 255-5203



CHICK-FIL-A
White Oak Village
4443 S Laburnum Ave
Richmond, VA 23231

FSR#02298
BUILDING TYPE / SIZE: S06C
RELEASE: v11.21

REVISION SCHEDULE

NO	DATE	DESCRIPTION
1	2/28/2022	Building Comments

CONSULTANT PROJECT # 22006.HF.R
PRINTED FOR CONSTRUCTION
DATE 01/25/2022
DRAWN BY AK

Information contained on this drawing and in all digital files produced for above named project may not be reproduced in any manner without express written or verbal consent from authorized project representatives.

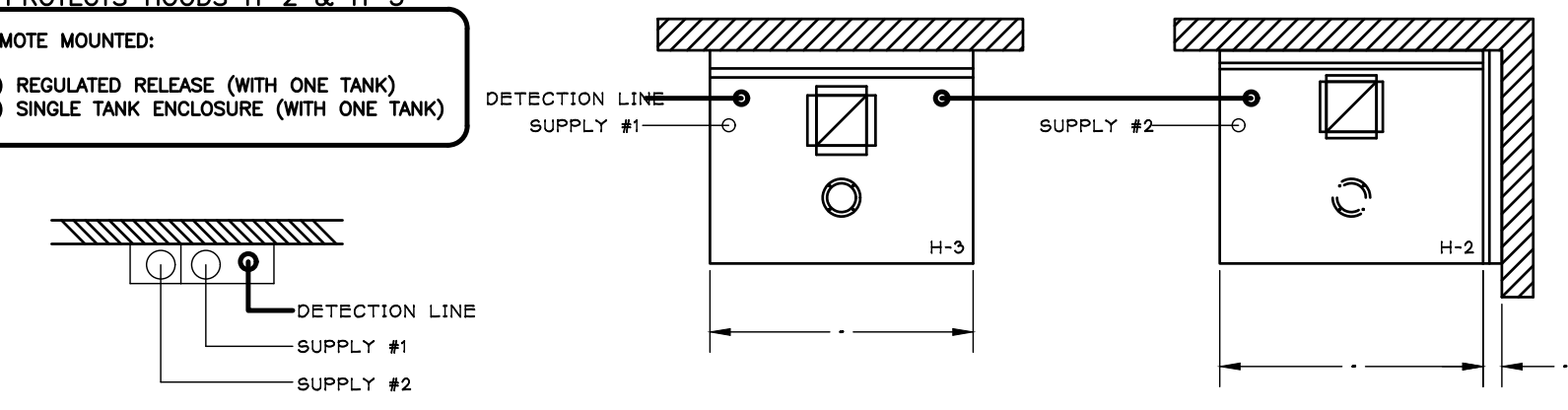
SHEET HOOD SHOP DRAWINGS
SHEET NUMBER

MH1.1

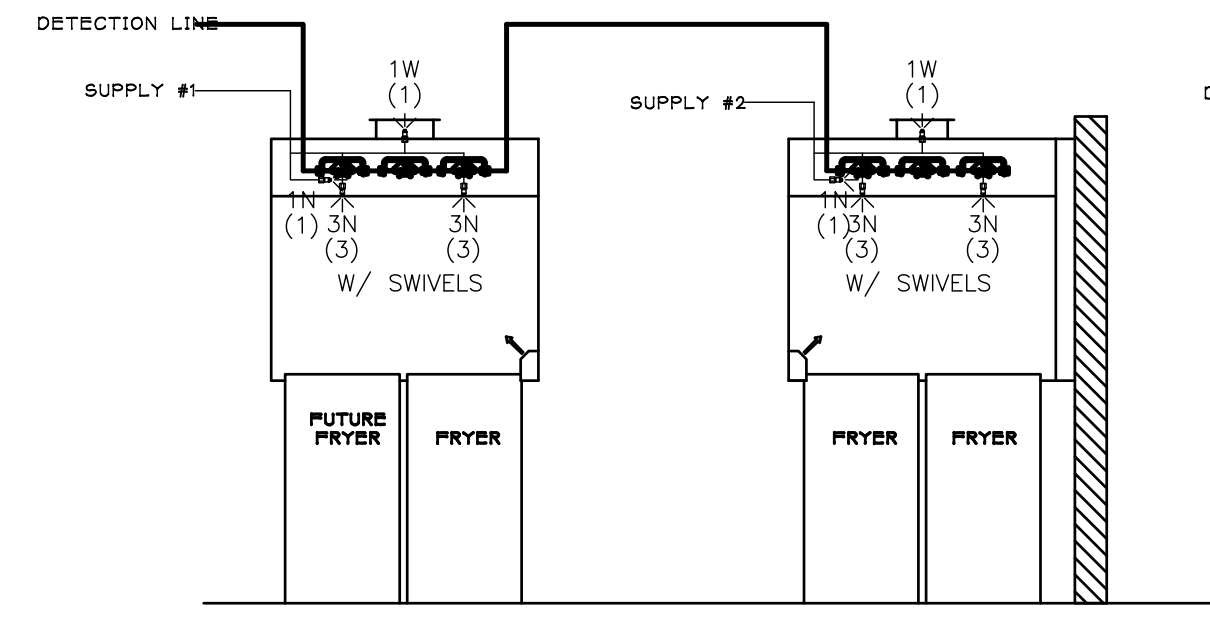
NOTE:
FIRE SUPPRESSION PLAN SHALL BE SUBMITTED
WITH FIRE PERMIT APPLICATION.

FOR CONSTRUCTION

****PROTECTS HOODS H-2 & H-3****
REMOTE MOUNTED:
(1) REGULATED RELEASE (WITH ONE TANK)
(1) SINGLE TANK ENCLOSURE (WITH ONE TANK)

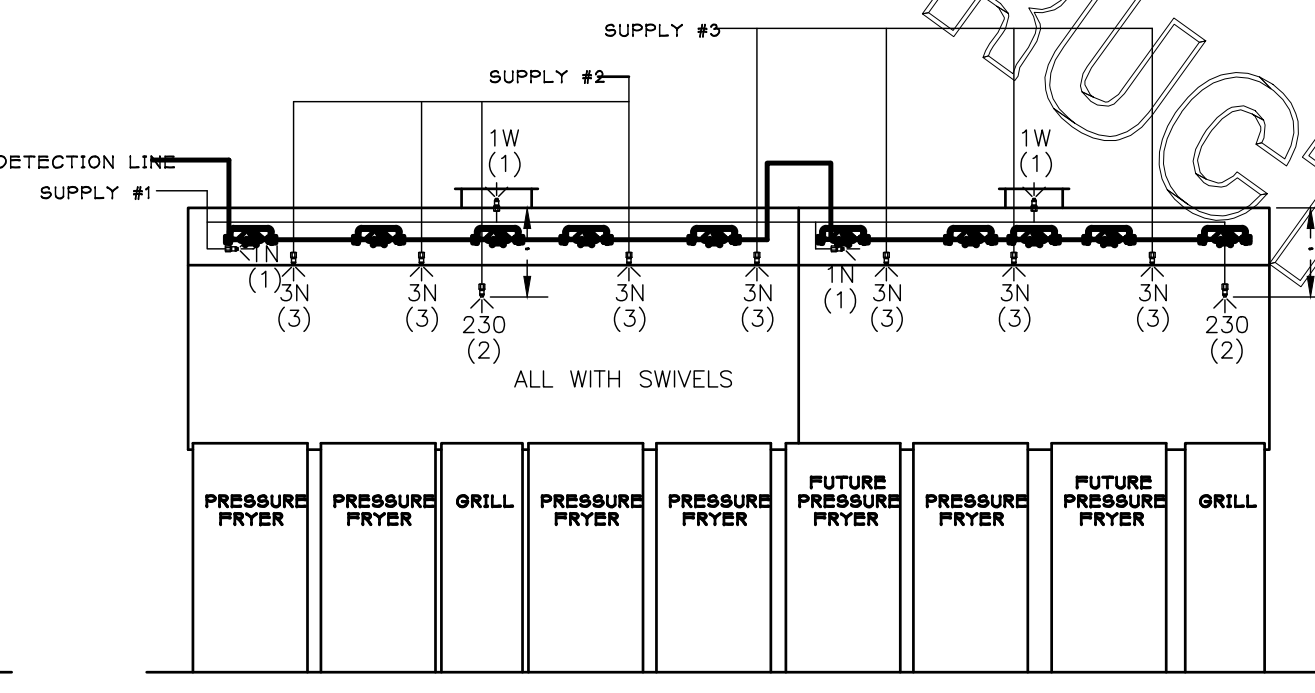


ANSUL R-102 FIRE SYSTEM
 (1) REGULATED RELEASE
 (2) EXTRA MICRO SWITCH ASSEMBLIES MOUNTED IN REG. REL.
 (3) SINGLE TANK ENCLOSURE
 (3) 3 GALLON TANK



ANSUL R-102 FIRE SYSTEM LAYOUT

ANSUL R-102 FIRE SYSTEM
 (1) OEM REGULATED RELEASE
 (2) EXTRA MICRO SWITCH ASSEMBLIES MOUNTED IN OEM REG. REL.
 (3) 3 GALLON TANKS



ANSUL R-102 FIRE SYSTEM LAYOUT

FUSIBLE LINK RATINGS

ITEM	TEMP
OPEN FRYERS	450
2 BURNER / FLAT TOP	450
PRESSURE FRYERS	450
GRILL	450
EXHAUST COLLARS	450

ANSUL R-102 FIRE SYSTEM NOTES
THREE TANK SYSTEM MOUNTED ON TOP OF (H-1L)
MAXIMUM FLOW POINTS = 33

ANSUL R-102 FIRE SYSTEM NOTES
TWO TANK SYSTEM REMOTE MOUNTED
MAXIMUM FLOW POINTS = 22

ITEM #	QTY	DESCRIPTION	FLOW PTS (TOTAL)
1W	4	DUCT NOZZLES	4
1N	4	PLENUM NOZZLES	4
230	2	APPLIANCE NOZZLES	4
3N	11	APPLIANCE NOZZLES	33

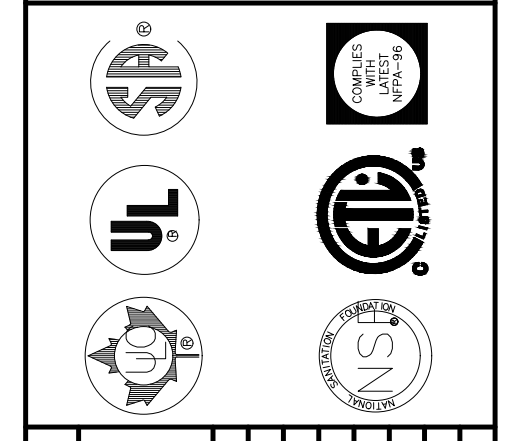
TOTAL FLOW POINTS 46

ITEM #	QTY	DESCRIPTION
#200	14	SERIES DETECTORS W/ FUSIBLE LINKS
#201	2	TERMINAL DETECTOR W/ FUSIBLE LINKS
#202	1	OEM REGULATED RELEASE W/ DOUBLE POLE MICRO SWITCH
#202	1	REGULATED RELEASE W/ DOUBLE POLE MICRO SWITCH
#203	5	3 GALLON TANKS
#204	1	SINGLE TANK ENCLOSURE
#205	2	REMOTE PULL STATION

ANSUL R-102 FIRE SYSTEM
UL LISTED PER STD LATEST STD 300

- FINAL INSTALLATION IS TO BE MADE IN ACCORDANCE WITH ALL APPLICABLE CODES
- ALL ELECTRICAL COMPONENTS FOR EQUIPMENT SHUT DOWN TO BE PROVIDED BY THE ELECTRICIAN. MICRO-SWITCH INSTALLED IN REGULATED RELEASE BY ANSUL INSTALLER
- REMOTE PULL STATION LOCATED PER MECHANICAL DRAWINGS

THIS DRAWING MUST BE CHECKED, SIGNED AND RETURNED TO THE APPROPRIATE FACTORY. PLEASE VERIFYING THE FOLLOWING:
 1. ALL DIMENSIONAL INFORMATION, MOUNTING POSITIONS
 2. THE LOCATION AND TYPE OF COOKING EQUIPMENT.
NOTE TO APPROVER:
 THIS DRAWING IS FOR APPROVAL ONLY. APPROVED RELEASES, ASSETS, AND EQUIPMENT POSITION MUST BE APPROVED BY THE FACTORY. APPROVAL MUST BE OBTAINED IF ANY OF THESE CHANGES OCCUR. A RECALCULATION EXHAUST AIRFLOW MAY BE REQUIRED.
 REVISE AND RESUBMIT
 APPROVED FOR FABRICATION
 WITH NO CHANGES
 WITH CHANGES AS NOTED
 APPROVED BY: _____ DATE: _____



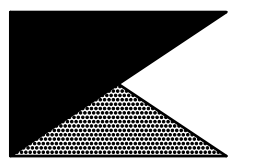
REVISION	DESCRIPTION	DATE
1		
2		
3		
4		
5		
6		
7		

MAIL APPROVED DRAWINGS TO APPROPRIATE FACTORY BELOW:
 HALTON CO. (USA)
 1000 W. WASHINGTON ST.
 SCOTTSVILLE, KY 42164
 1-270-237-5600
 WEBSITE: WWW.HALTONCOMPANY.COM
 HALTON CO. (CANADA)
 3600 LAKEVIEW BLVD.
 MISSISSAUGA, ON L4W 3R7
 1-905-674-0301
 PROJECT: CHICK-FIL-A #2298
 WHITE OAK VILLAGE
 LOCATION: RICHMOND, VA
 DRAWN BY: AF
 DATE: 01.12.22
 SCALE: NTS
 Halton Dept: U22-023-02
Halton
 CARE FOR INDOOR AIR



Chick-fil-A

Chick-fil-A
5200 Buffington Road
Atlanta, Georgia 30349



Kurzynske & Associates
CONSULTING ENGINEERS
2705 Lebanon Pike - Suite One
Nashville, Tennessee 37214
Telephone: (615) 255-5203



CHICK-FIL-A
White Oak Village
4443 S Laburnum Ave
Richmond, VA 23231

FSR#02298

BUILDING TYPE / SIZE: S06C
RELEASE: v11.21

REVISION SCHEDULE

NO.	DATE	DESCRIPTION
1	2/28/2022	Building Comments

CONSULTANT PROJECT # 22006.HF.R
 PRINTED FOR CONSTRUCTION
 DATE 01/25/2022
 DRAWN BY AK

Information contained on this drawing and in all digital files produced for above named project may not be reproduced in any manner without express written or verbal consent from authorized project representatives.
 SHEET
 HOOD SHOP
 DRAWINGS
 SHEET NUMBER

MH1.2