

PlanGrid Task Report - Oct 9, 2024

Prepared by Michael McDonnell

Oct 9, 2024

Description

14 tasks in this report.

Contents

#590 [UNIT 509][NEW] Factory Smoke detectors.....	2
#589 [REFG 508][NEW] WIC/WIF Panel Penetrations	5
#588 [REFG 506][NEW] WIF door sweep v threshold.	7
#587 [CURT 503][NEW] Air Curtain Door Switched.....	8
#585 [REFG 516][NEW] Condenser Electrical Disconnects	10
#583 [DUCT 008][NEW] CRITICAL- AC-1 Supply Start Collar damper orientation.	11
#582 [EXHA 008][NEW] EF-4 is Wrong Model Fan	14
#581 [UNIT 504][NEW] Equipment Fresh Air Tempering	16
#579 [DUCT 507][NEW] Not All Ductwork Insulated; seams not taped.	18
#578 [DUCT 501][NEW] Insulation Stick Pins.....	20
#575 [UNIT 999][NEW] AC-3 economizer plug backwards from factory.....	22
#574 [REFG 511][NEW] PVC gooseneck installation	23
#573 [REFG 514][NEW] Condenser Anchoring	24
#572 [UNIT 999][NEW] (MISC) AC-3 : Return Humidity Sensor Not Installed.....	26

L05222_Broadview FSU (IL)

3300 Broadview Village Square, Riverside, Illinois

L1020005222

#590 [UNIT 509][NEW] Factory Smoke detectors

Status

Open

Created

Oct 9, 2024 3:36 PM
mmcdonnell@nationaltab.com

Type

Issue

Last Updated

Oct 9, 2024 3:40 PM

List

TAB Punch List

Description

Request confirmation of proper smoke detector sampling tube configuration/installation. AC-1 does not have tube installed. AC-2 has tube installed to detector and routed to return. AC-3 has tube in mixed air compartment but it is not connected to sampling tube.

Photos

L05222_Broadview FSU (IL)

3300 Broadview Village Square, Riverside, Illinois

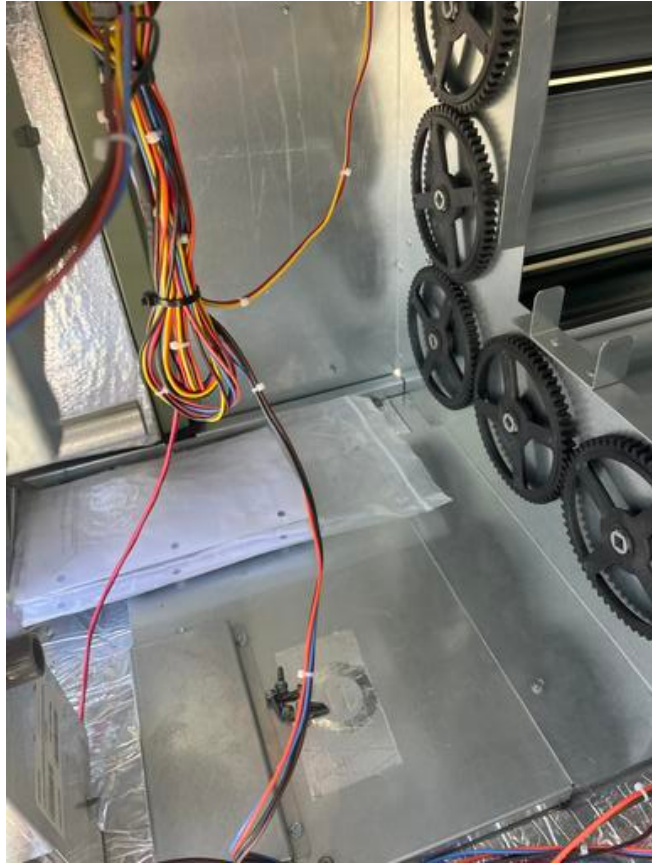
L1020005222



IMG_1020

Michael McDonnell

Oct 9, 2024 3:40 PM



IMG_1023

Michael McDonnell

Oct 9, 2024 3:40 PM

L05222_Broadview FSU (IL)

3300 Broadview Village Square, Riverside, Illinois

L1020005222



IMG_1022

Michael McDonnell

Oct 9, 2024 3:40 PM



IMG_1021

Michael McDonnell

Oct 9, 2024 3:40 PM

L05222_Broadview FSU (IL)

3300 Broadview Village Square, Riverside, Illinois

L1020005222

#589 [REFG 508][NEW] WIC/WIF Panel Penetrations

Status

Open

Created

Oct 9, 2024 3:05 PM
mmcdonnell@nationaltab.com

Type

Issue

Last Updated

Oct 9, 2024 3:42 PM

List

TAB Punch List

Description

WIF-WIC penetrations are not sealed from inside with silicone or sealed above at time of inspection.

Photos

L05222_Broadview FSU (IL)

3300 Broadview Village Square, Riverside, Illinois

L1020005222



IMG_1006

Michael McDonnell

Oct 9, 2024 3:07 PM



IMG_1001

Michael McDonnell

Oct 9, 2024 3:07 PM

L05222_Broadview FSU (IL)

3300 Broadview Village Square, Riverside, Illinois

L1020005222

#588 [REFG 506][NEW] WIF door sweep v threshold.

Status

Open

Created

Oct 9, 2024 3:03 PM
mmcdonnell@nationaltab.com

Type

Issue

Last Updated

Oct 9, 2024 3:05 PM

List

TAB Punch List

Description

WIF door sweep is not sealed tightly with threshold when doors closed. Light is visible.

Photos



IMG_0998

Michael McDonnell

Oct 9, 2024 3:05 PM

L05222_Broadview FSU (IL)

3300 Broadview Village Square, Riverside, Illinois

L1020005222

#587 [CURT 503][NEW] Air Curtain Door Switched

Status

Open

Created

Oct 9, 2024 2:15 PM
mmcdonnell@nationaltab.com

Type

Issue

Last Updated

Oct 9, 2024 2:16 PM

List

TAB Punch List

Description

AD#2 not operational at time of TAB. Door Sensors are not yet installed as door is scheduled to be replaced.

Photos

L05222_Broadview FSU (IL)

3300 Broadview Village Square, Riverside, Illinois

L1020005222



IMG_1009

Michael McDonnell

Oct 9, 2024 2:16 PM



IMG_1010

Michael McDonnell

Oct 9, 2024 2:16 PM

L05222_Broadview FSU (IL)

3300 Broadview Village Square, Riverside, Illinois

L1020005222

#585 [REFG 516][NEW] Condenser Electrical Disconnects

Status

Open

Created

Oct 9, 2024 1:57 PM
mmcdonnell@nationaltab.com

Type

Issue

Last Updated

Oct 9, 2024 2:00 PM

List

TAB Punch List

Description

Electrical disconnects not labeled.

Photos



IMG_0848

Michael McDonnell

Oct 9, 2024 2:00 PM

#583 [DUCT 008][NEW] CRITICAL- AC-1 Supply Start Collar damper orientation.

Status

In Review

Created

Oct 8, 2024 3:24 PM
mmcdonnell@nationaltab.com

Type

Issue

Last Updated

Oct 8, 2024 3:34 PM

List

TAB Punch List

Description

Dampers installed at 6 o'clock on 2 supply dampers on AC-1. This is incorrect orientation as dampers are perpendicular to airflow. However, TAB is accepting as installed. Unit is performing at design, all diffusers at design airflow. Ductwork Design does not provide enough room for dampers to be installed in correct orientation, and be accessible. Recommend EOR review plans and provide more spacing for proper damper installation in future.

Photos

L05222_Broadview FSU (IL)

3300 Broadview Village Square, Riverside, Illinois

L1020005222



IMG_0960

Michael McDonnell

Oct 8, 2024 3:31 PM



IMG_0964

Michael McDonnell

Oct 8, 2024 3:31 PM

L05222_Broadview FSU (IL)

3300 Broadview Village Square, Riverside, Illinois

L1020005222



IMG_0965

Michael McDonnell

Oct 8, 2024 3:31 PM

L05222_Broadview FSU (IL)

3300 Broadview Village Square, Riverside, Illinois

L1020005222

#582 [EXHA 008][NEW] EF-4 is Wrong Model Fan

Status

Open

Created

Oct 8, 2024 3:13 PM
mmcdonnell@nationaltab.com

Type

Issue

Last Updated

Oct 8, 2024 3:24 PM

List

TAB Punch List

Description

Plans call for SP-A90, SP-A390 model is installed. Fan was able to be slowed into design. Wrong fan model has been sent to multiple locations. Recommend Halton Review.

Photos

L05222_Broadview FSU (IL)

3300 Broadview Village Square, Riverside, Illinois

L1020005222



IMG_0955

Michael McDonnell

Oct 8, 2024 3:24 PM



IMG_0956

Michael McDonnell

Oct 8, 2024 3:24 PM

L05222_Broadview FSU (IL)

3300 Broadview Village Square, Riverside, Illinois

L1020005222

#581 [UNIT 504][NEW] Equipment Fresh Air Tempering

Status

Open

Created

Oct 8, 2024 11:57 AM
mmcdonnell@nationaltab.com

Type

Issue

Last Updated

Oct 8, 2024 12:00 PM

List

TAB Punch List

Description

FAT installed and wired per plan. Wiring schematic has been updated and a new timer is required. ICM102 timer installed, ICM104 now required. Recommend MC install new timer/review per new schematic.

Photos

L05222_Broadview FSU (IL)

3300 Broadview Village Square, Riverside, Illinois

L1020005222



IMG_0946

Michael McDonnell

Oct 8, 2024 12:00 PM

L05222_Broadview FSU (IL)

3300 Broadview Village Square, Riverside, Illinois

L1020005222

#579 [DUCT 507][NEW] Not All Ductwork Insulated; seams not taped.

Status

Open

Created

Oct 8, 2024 9:39 AM
mmcdonnell@nationaltab.com

Type

Issue

Last Updated

Oct 8, 2024 10:00 AM

List

TAB Punch List

Description

Insulation needs to be taped to top of diffusers on all systems. Some instances of missing/not taped ductwork

Photos

L05222_Broadview FSU (IL)

3300 Broadview Village Square, Riverside, Illinois

L1020005222



IMG_0937

Michael McDonnell

Oct 8, 2024 10:00 AM



IMG_0933

Michael McDonnell

Oct 8, 2024 9:40 AM

L05222_Broadview FSU (IL)

3300 Broadview Village Square, Riverside, Illinois

L1020005222

#578 [DUCT 501][NEW] Insulation Stick Pins

Status

Open

Created

Oct 8, 2024 9:35 AM
mmcdonnell@nationaltab.com

Type

Issue

Last Updated

Oct 8, 2024 9:38 AM

Description

External insulation on bottom of ducts 24" or wider to be supported by stick pins 18" on center. Cut pins and apply tape over r mastic to cover. AC-2 supply does not appear to have stick pins installed. AC-3 return appears to have some stick pins, but not 18" or n center, insulation sagging slightly. Recommend stick pins added.

Photos

L05222_Broadview FSU (IL)

3300 Broadview Village Square, Riverside, Illinois

L1020005222



IMG_0936

Michael McDonnell

Oct 8, 2024 9:37 AM



IMG_0925

Michael McDonnell

Oct 8, 2024 9:37 AM

#575 [UNIT 999][NEW] AC-3 economizer plug backwards from factory

Status

In Review

Created

Oct 7, 2024 4:02 PM
mmcdonnell@nationaltab.com

Type

Planned Work

Last Updated

Oct 8, 2024 11:51 AM

List

TAB Punch List

Description

Economizer plug wired backward from factory. Corrected by NTAB. 25% open was 75% open.

Comments

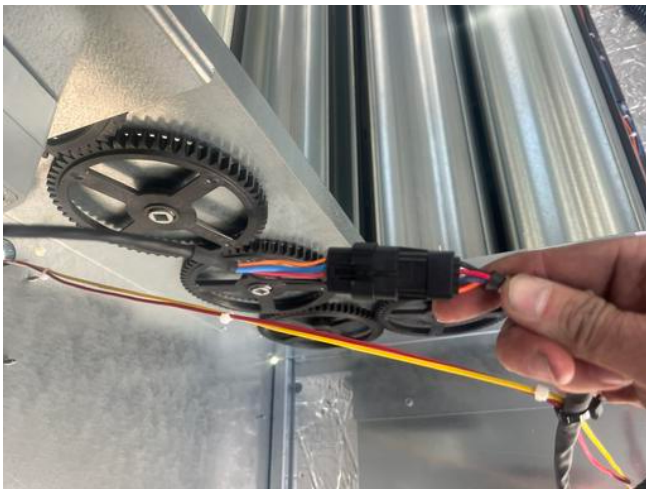
Plug cannot be fully secured when rotated to correct orientation.

Michael McDonnell Oct 7, 2024

Recommend plug is secured

Michael McDonnell Oct 8, 2024

Photos



IMG_0917

Michael McDonnell

Oct 7, 2024 4:04 PM

L05222_Broadview FSU (IL)

3300 Broadview Village Square, Riverside, Illinois

L1020005222

#574 [REFG 511][NEW] PVC gooseneck installation

Status

Open

Created

Oct 7, 2024 4:01 PM
mmcdonnell@nationaltab.com

Type

Issue

Last Updated

Oct 7, 2024 4:02 PM

Description

Be sure risers are filled with spray foam once installation is complete.

Photos



IMG_0846
Michael McDonnell
Oct 7, 2024 4:02 PM



IMG_0847
Michael McDonnell
Oct 7, 2024 4:02 PM

L05222_Broadview FSU (IL)

3300 Broadview Village Square, Riverside, Illinois

L1020005222

#573 [REFG 514][NEW] Condenser Anchoring

Status

Open

Created

Oct 7, 2024 3:57 PM
mmcdonnell@nationaltab.com

Type

Issue

Last Updated

Oct 7, 2024 3:59 PM

List

TAB Punch List

Description

Condensers are not properly anchored to equipment stands.

Photos

L05222_Broadview FSU (IL)

3300 Broadview Village Square, Riverside, Illinois

L1020005222



IMG_0845

Michael McDonnell

Oct 7, 2024 3:59 PM



IMG_0844

Michael McDonnell

Oct 7, 2024 3:59 PM

L05222_Broadview FSU (IL)

3300 Broadview Village Square, Riverside, Illinois

L1020005222

#572 [UNIT 999][[NEW] (MISC) AC-3 : Return Humidity Sensor Not Installed

Status

Open

Created

Oct 7, 2024 3:55 PM
mmcdonnell@nationaltab.com

Type

Issue

Last Updated

Oct 8, 2024 3:12 PM

List

TAB Punch List

Description

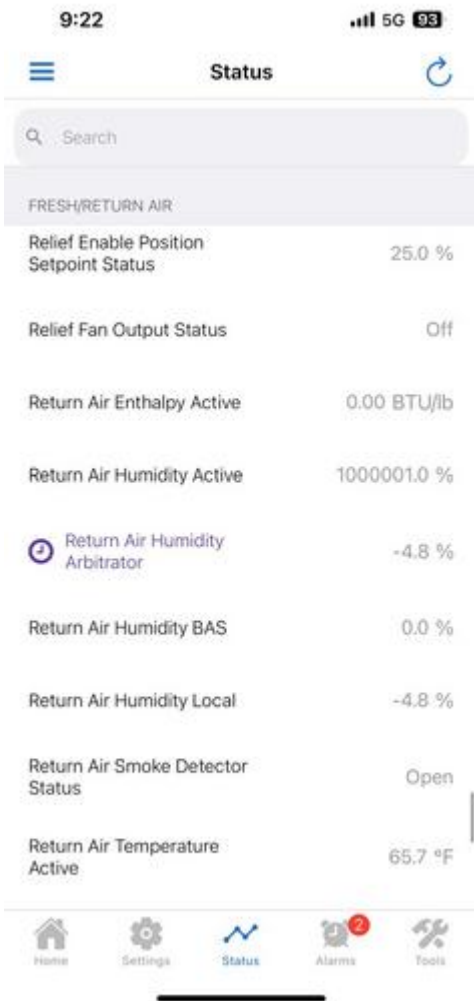
AC-3 is alarmed and does not appear to have a return humidity sensor installed. Recommend TRANE is consulted. This has occurred at multiple locations.

Photos

L05222_Broadview FSU (IL)

3300 Broadview Village Square, Riverside, Illinois

L1020005222



IMG_0852

Michael McDonnell

Oct 7, 2024 3:57 PM