



COOK

SUBMITTAL

PROJECT: KITCHEN SOCIAL MONTGOMERY QUARTER BL

CONTRACTOR: Triton Services

SUBMITTED BY: Steve Forbeck
Controlled Air Inc.
12009 Tramway Drive
Cincinnati, OH 45241

PHONE: 513-981-2734
E-MAIL: steve@controlled-air.com

DATE: 8/1/2023

LOREN COOK COMPANY



Corporate Offices: 2015 E. Dale Street, Springfield, MO 65803 • P.O. Box 4047, Springfield, MO 65808
417.869.6474 • fax 417.869.2520
lorencook.com



COOK



MARK: EF-3,4

PROJECT: KITCHEN SOCIAL MONTGOMERY QUARTE...

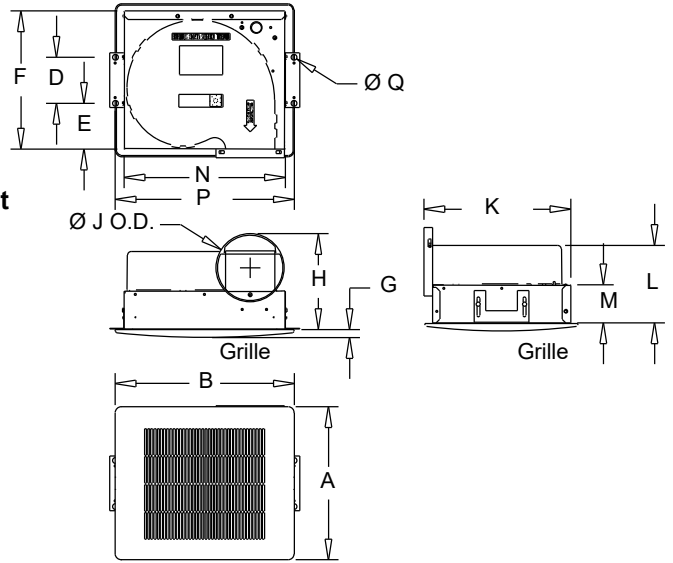
DATE: 8/1/2023

GEMINI

Ceiling Fans 100 Series

STANDARD CONSTRUCTION FEATURES:

Forward curved injection molded polypropylene fan wheel - Injection molded flame resistant fan housing with round outlet duct - 22 ga. galvanized steel inlet box - Isolation mounted motor, mounted to one piece galvanized stamped steel integral motor mount/inlet - Permanently lubricated 2-speed motor with built-in thermal overload protection and disconnect plug - Field wiring compartment with receptacle - Adjustable prepunched mounting bracket - White, high impact styrene injection molded grille - Shipped in ISTA certified transit tested packaging.



Performance

Qty	Catalog Number	Flow (CFM)	SP (inwc)	Nominal RPM	Input Watts	Speed Control
2	GC-146	75	.250	814	31	FSC

Altitude (ft): 1004 Temperature (F): 70

Motor Information

Volts/Ph/Hz	Nameplate Amps
115/1/60	.313

Sound Data Inlet Sound Power by Octave Band

1	2	3	4	5	6	7	8	LwA	dBA	Sones
46	48	50	48	41	34	28	19	48	36	1.2

- Distance from Sound source 5 ft

Accessories:

- WHITE PLASTIC GRILLE
- FAN SPEED CONTROLLER 5 AMP 120 VOLT
- INTEGRAL BD DAMPER
- GEMINI ISOLATOR KIT - ISOLATORS

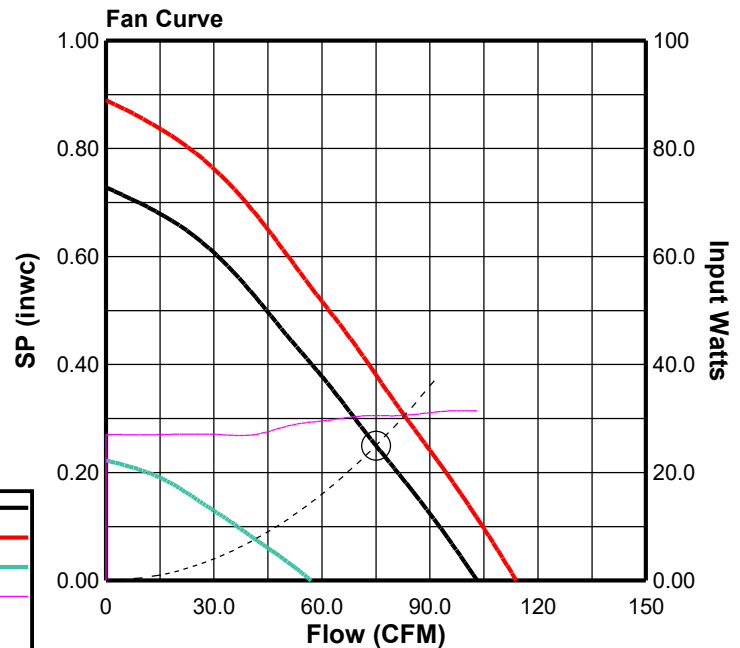
Dimensions (inches)

A Plastic	13-1/4	M	3-1/4
B Plastic	15-1/2	N	14
D	4	P	15-1/2
E	4	Q	1/2
F	12		
G	5/8		
H	8-3/8		
J O.D.	5-15/16		
K	12-3/4		
L	6-11/16		

NOTE: Accessories may affect dimensions shown.

Weight(lbs)***	Shipping	18	Unit	15
----------------	----------	----	------	----

***Includes fan, motor & accessories.





COOK



MARK: EF-3,4

PROJECT: KITCHEN SOCIAL MONTGOMERY QUARTE...

DATE: 8/1/2023

GEMINI

Performance

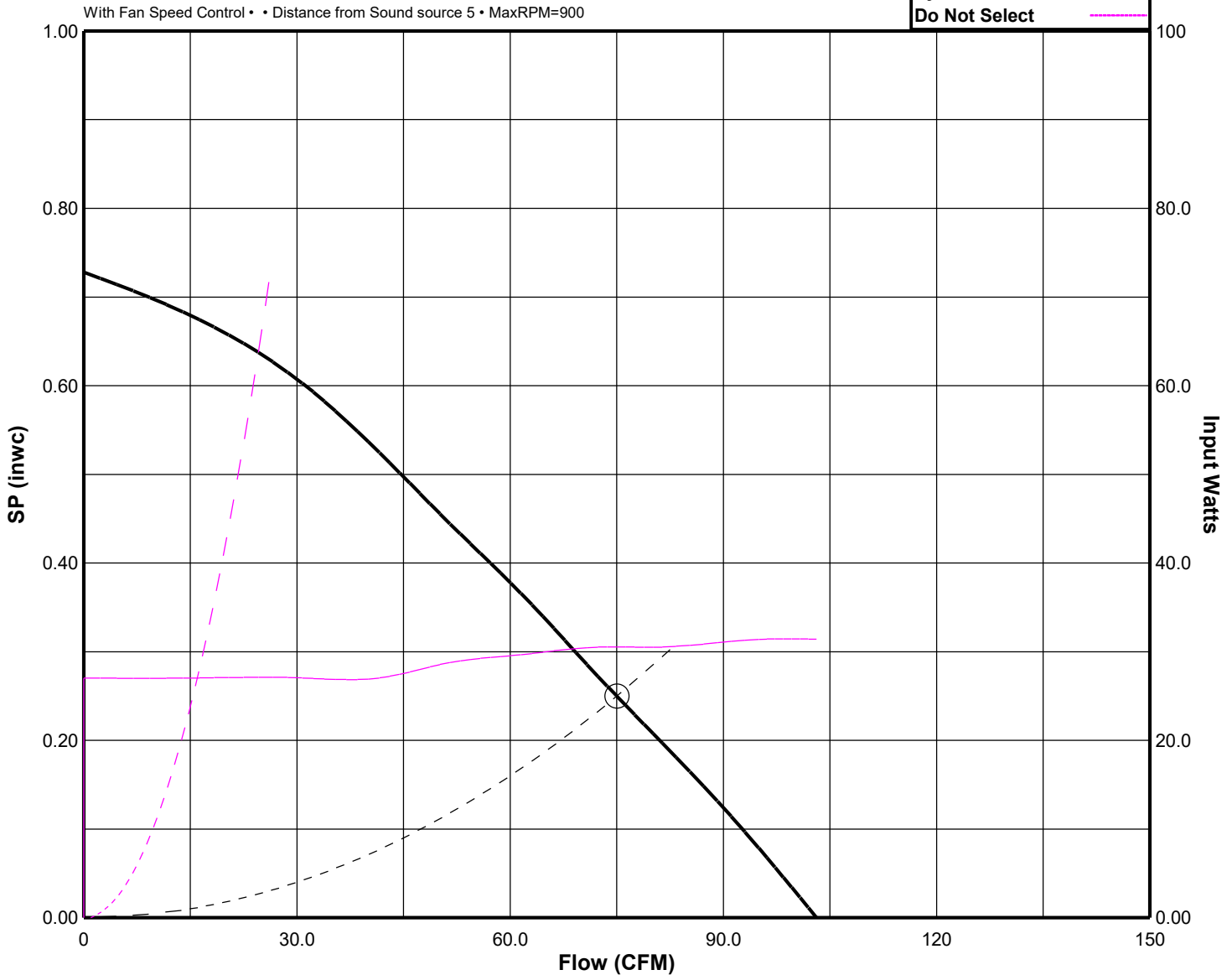
Catalog Number	Flow (CFM)	SP (inwc)	Nominal RPM	Input Watts	OVEL (fpm)	TSPD (fpm)	SE	Temp (°F)	ALT (ft)
GC-146	75	.250	814	31	383	1625	24%	70	1004

Motor Information

Volts/Ph/Hz	Nameplate Amps
115/1/60	.313

Fan Curve Legend

CFM vs SP	—
CFM vs Watts	—
Point of Operation	○
System Curve	- - -
Do Not Select	—





COOK



MARK: EF-5

PROJECT: KITCHEN SOCIAL MONTGOMERY QUARTE...

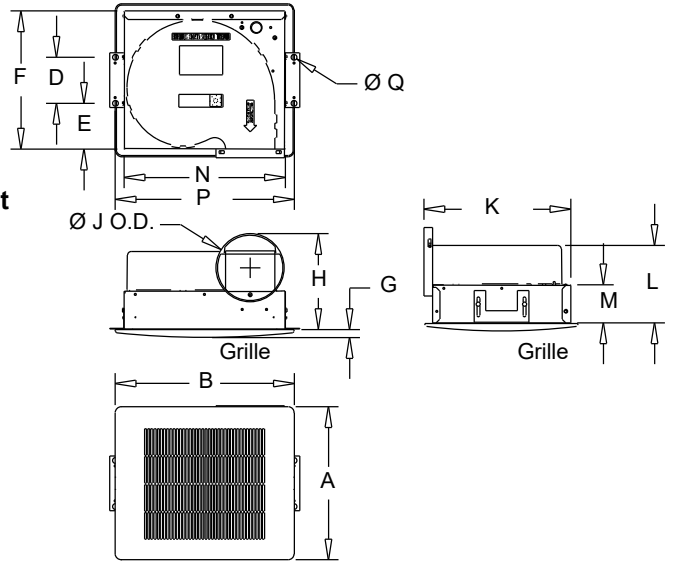
DATE: 8/1/2023

GEMINI

Ceiling Fans 100 Series

STANDARD CONSTRUCTION FEATURES:

Forward curved injection molded polypropylene fan wheel - Injection molded flame resistant fan housing with round outlet duct - 22 ga. galvanized steel inlet box - Isolation mounted motor, mounted to one piece galvanized stamped steel integral motor mount/inlet - Permanently lubricated 2-speed motor with built-in thermal overload protection and disconnect plug - Field wiring compartment with receptacle - Adjustable prepunched mounting bracket - White, high impact styrene injection molded grille - Shipped in ISTA certified transit tested packaging.



Performance

Qty	Catalog Number	Flow (CFM)	SP (inwc)	Nominal RPM	Input Watts	Speed Control
1	GC-168	150	.250	1098	51	FSC

Altitude (ft): 1004 Temperature (F): 70

Motor Information

Volts/Ph/Hz	Nameplate Amps
115/1/60	.504

Sound Data Inlet Sound Power by Octave Band

1	2	3	4	5	6	7	8	LwA	dBA	Sones
54	54	57	56	52	47	44	37	57	46	3.0

- Distance from Sound source 5 ft

Accessories:

- FAN SPEED CONTROLLER 5 AMP 120 VOLT
- WHITE PLASTIC GRILLE
- INTEGRAL BD DAMPER
- GEMINI ISOLATOR KIT - ISOLATORS

Dimensions (inches)

A Plastic	13-1/4	M	3-1/4
B Plastic	15-1/2	N	14
D	4	P	15-1/2
E	4	Q	1/2
F	12		
G	5/8		
H	8-3/8		
J O.D.	5-15/16		
K	12-3/4		
L	6-11/16		

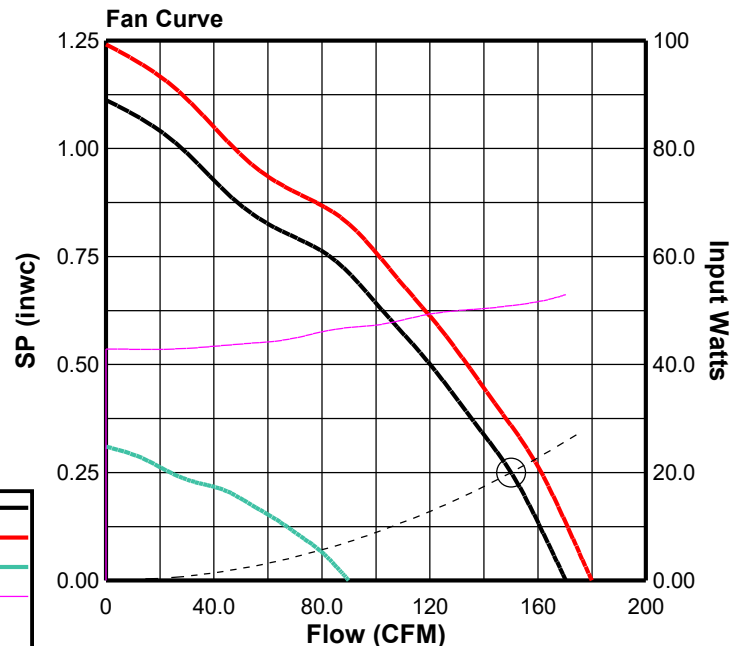
NOTE: Accessories may affect dimensions shown.

Weight(lbs)***	Shipping	18	Unit	15
----------------	----------	----	------	----

***Includes fan, motor & accessories.

Fan Curve Legend

CFM vs SP (1098)	—
100% FSC (1160)	—
Min FSC (580)	—
CFM vs Watts	—
Point of Operation	○
System Curve	-----





COOK



MARK: EF-5

PROJECT: KITCHEN SOCIAL MONTGOMERY QUARTE...

DATE: 8/1/2023

GEMINI

Performance

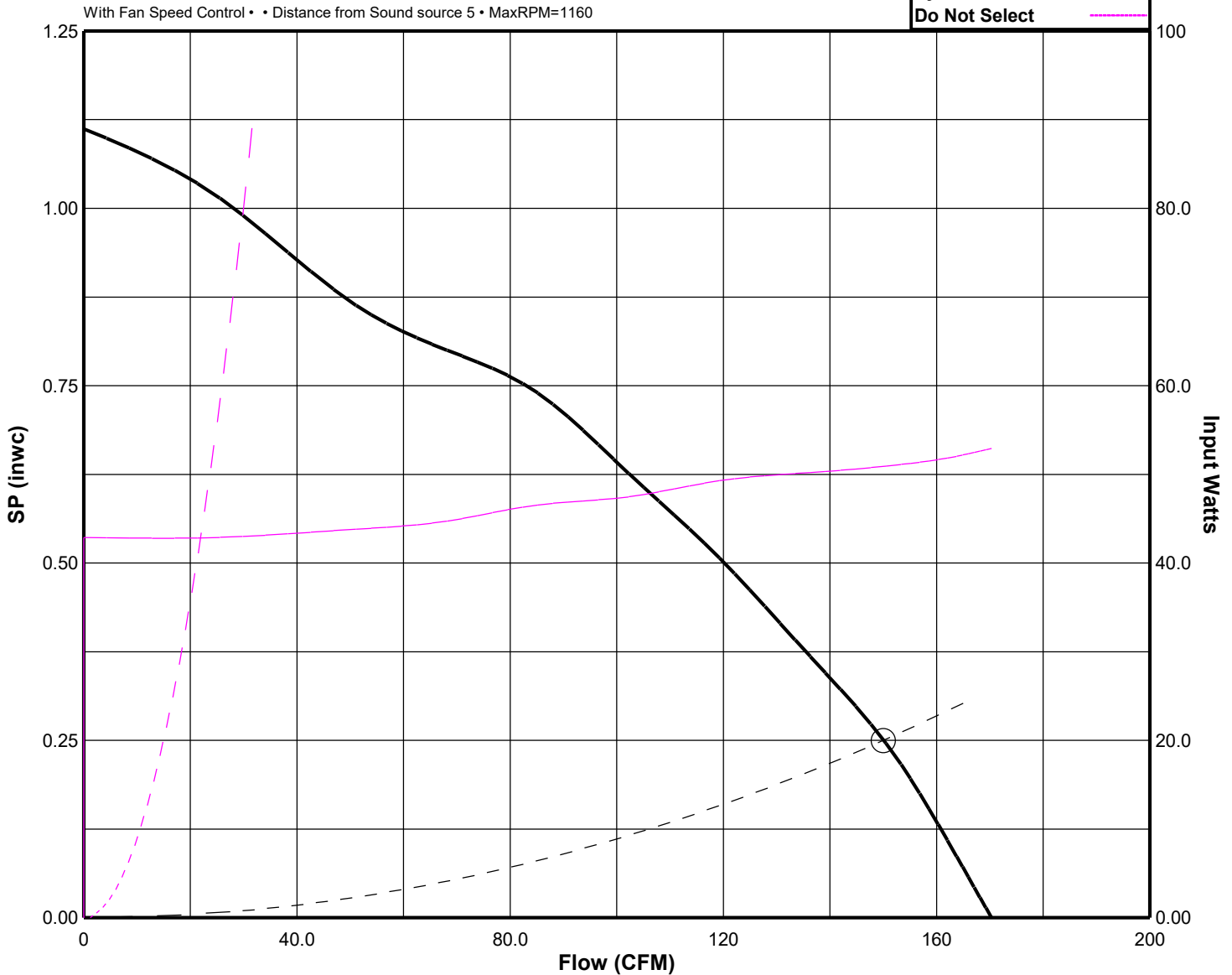
Catalog Number	Flow (CFM)	SP (inwc)	Nominal RPM	Input Watts	OVEL (fpm)	TSPD (fpm)	SE	Temp (°F)	ALT (ft)
GC-168	150	.250	1098	51	765	2193	29%	70	1004

Motor Information

Volts/Ph/Hz	Nameplate Amps
115/1/60	.504

Fan Curve Legend

CFM vs SP	—
CFM vs Watts	—
Point of Operation	○
System Curve	- - -
Do Not Select	—



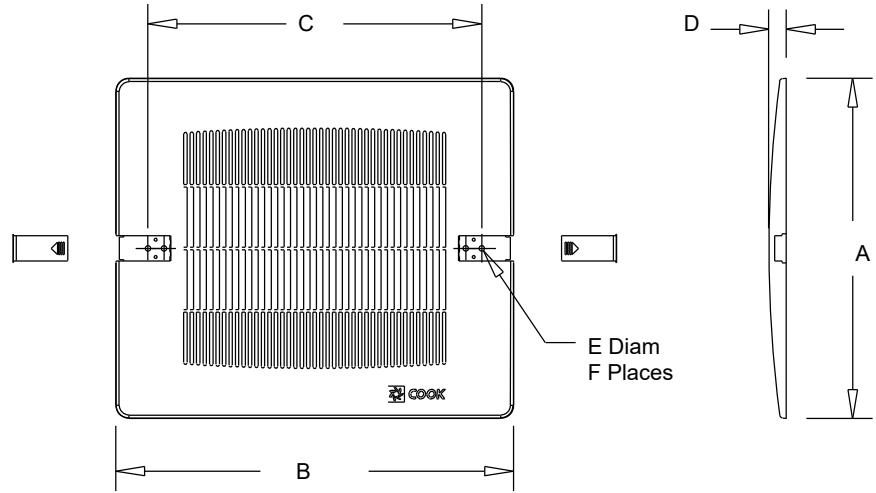


COOK

PROJECT: KITCHEN SOCIAL MONTGOMERY QUARTE...

DATE: 8/1/2023

GEMINI PLASTIC GRILLE



Dimensions (inches)

Mark	Qty	Description	A	B	C	D	E Diam	F Places
EF-3,4	2	WHITE PLASTIC GRILLE	13-1/4	15-1/2	13	1/4	1/4	4
EF-5	1	WHITE PLASTIC GRILLE	13-1/4	15-1/2	13	1/4	1/4	4



FSC

Fan Speed Controls

STANDARD CONSTRUCTION FEATURES:

PRODUCT DESCRIPTION - Through the "Quadrac" integrated semi-conductor device it is now possible to offer this system with many advantages. Fewer semi-conductor parts mean greater reliability and the passivation process used in the manufacture of the semi-conductor insures long life.

Printed circuit construction eliminates wiring difficulties and guarantees workmanship.

All of these factors serve to offer the most important of all features - quality.

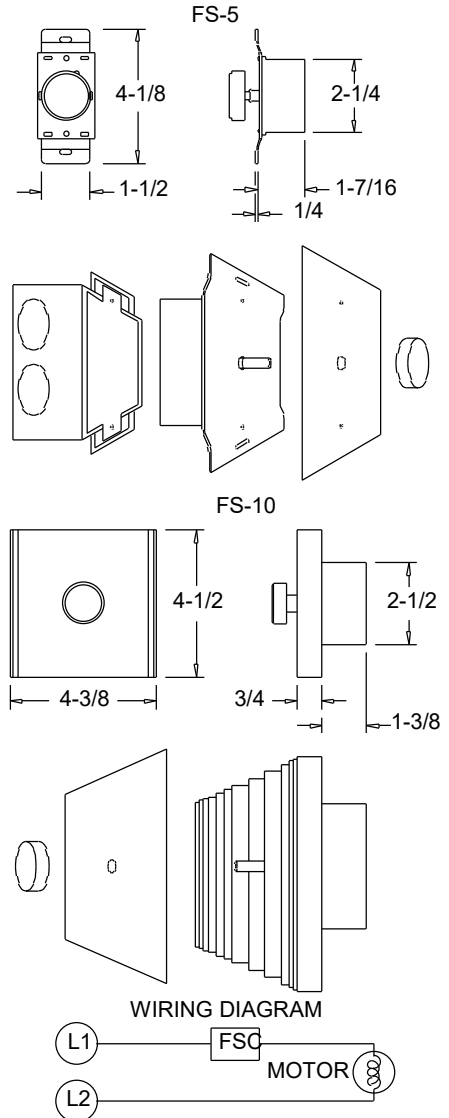
SPEED CONTROL - Positive Off/On action in the control dial. Speed range set to the customer's requirements. **CONTROL RATING** - 120 volts, 60 cycles, 1 phase. Maximum ambient temperature - 120 degree F (5 AMP, 10 AMP, 15 AMP). 220/240 volt, 50/60 cycles, 1 phase. Maximum ambient temperature - 120 degree F (5 AMP, 10 AMP). 220/240 volt model not UL listed. Fan cannot have UL listing if furnished with prewired 220/240 volt FSC. 277 volt, 60 cycles, 1 phase.

Maximum ambient temperature - 120 degree F (5 AMP). **WARNING** - Power must be turned off before installing this unit. **STANDARD INSTALLATION** - Fits any standard single gang box.

Turn off power and connect the two wires on the control to the two switch wires in the usual manner. The connection box is not supplied. **SPECIAL FEATURES** - Complete range control, solid state "Quadrac" integrated circuitry, solid state construction for long reliable operating life, saves on electric bills.

Dimensions (inches)

Mark	Qty	Description
EF-3,4	2	FSC 5 AMP 120 VOLT
EF-5	1	FSC 5 AMP 120 VOLT





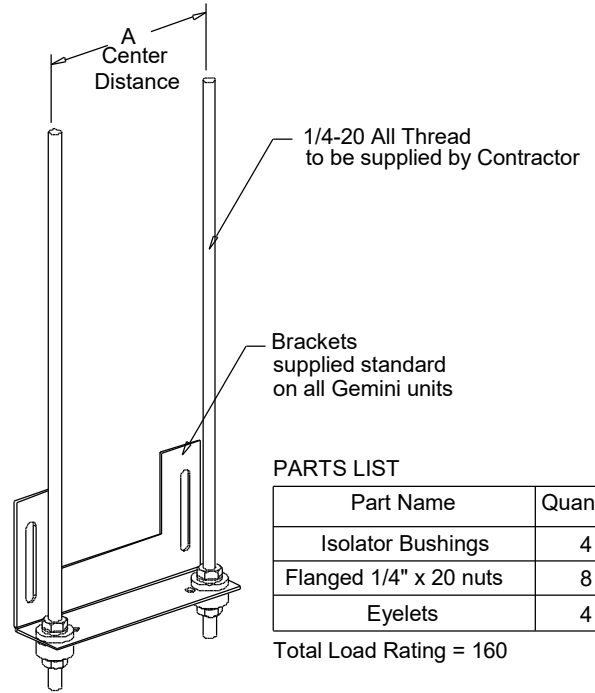
COOK

PROJECT: KITCHEN SOCIAL MONTGOMERY QUARTE...

DATE: 8/1/2023

GEMINI

Gemini Isolator Kit
GIK
Rubber In Shear



PARTS LIST

Part Name	Quantity
Isolator Bushings	4
Flanged 1/4" x 20 nuts	8
Eyelets	4

Total Load Rating = 160

Dimensions (inches)

Mark	Qty	Description	Part #	A
EF-3,4	2	GEMINI ISOLATO	GIK	4
EF-5	1	GEMINI ISOLATO	GIK	4



COOK

MARK: EF-5

PROJECT: KITCHEN SOCIAL MONTGOMERY QUARTE...

DATE: 8/1/2023

Limited Warranty

Loren Cook Company warrants that your Loren Cook fan was manufactured free of defects in materials and workmanship, to the extent stated herein. For a period of one (1) year after date of shipment, we will replace any parts found to be defective without charge, except for shipping costs which will be paid by you.

This warranty is granted only to the original purchaser placing the fan in service.

This warranty is void if the fan or any part thereof has been altered or modified from its original design or has been abused, misused, damaged or is in worn condition or if the fan has been used other than for the uses described in the company manual. This warranty does not cover defects resulting from normal wear and tear.

To make a warranty claim, notify Loren Cook Company, General Offices, 2015 East Dale Street, Springfield, Missouri 65803-4637, explaining in writing, in detail, your complaint and referring to the specific model and serial numbers of your fan. Upon receipt by Loren Cook Company of your written complaint, you will be notified, within thirty (30) days of our receipt of your complaint, in writing, as to the manner in which your claim will be handled. If you are entitled to warranty relief, a warranty adjustment will be completed within sixty (60) business days of the receipt of your written complaint by Loren Cook Company.

This warranty gives only the original purchaser placing the fan in service specifically the right. You may have other legal rights which vary from state to state.

For fans provided with motors, the motor manufacturer warrants motors for a designated period stated in the manufacturer's warranty. Warranty periods vary from manufacturer to manufacturer. Should motors furnished by Loren Cook Company prove defective during the designated period, they should be returned to the nearest authorized motor service station. Loren Cook Company will not be responsible for any removal or installation costs.