

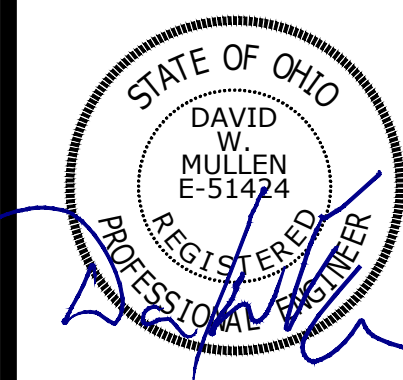
ARCHITECT/ENGINEER LOGO:



ISSUE DATE: 03-10-23
 REVISION: 03-24-2023 - REVISION 1 BD COMMENTS
 * NO REVISIONS THIS SHEET

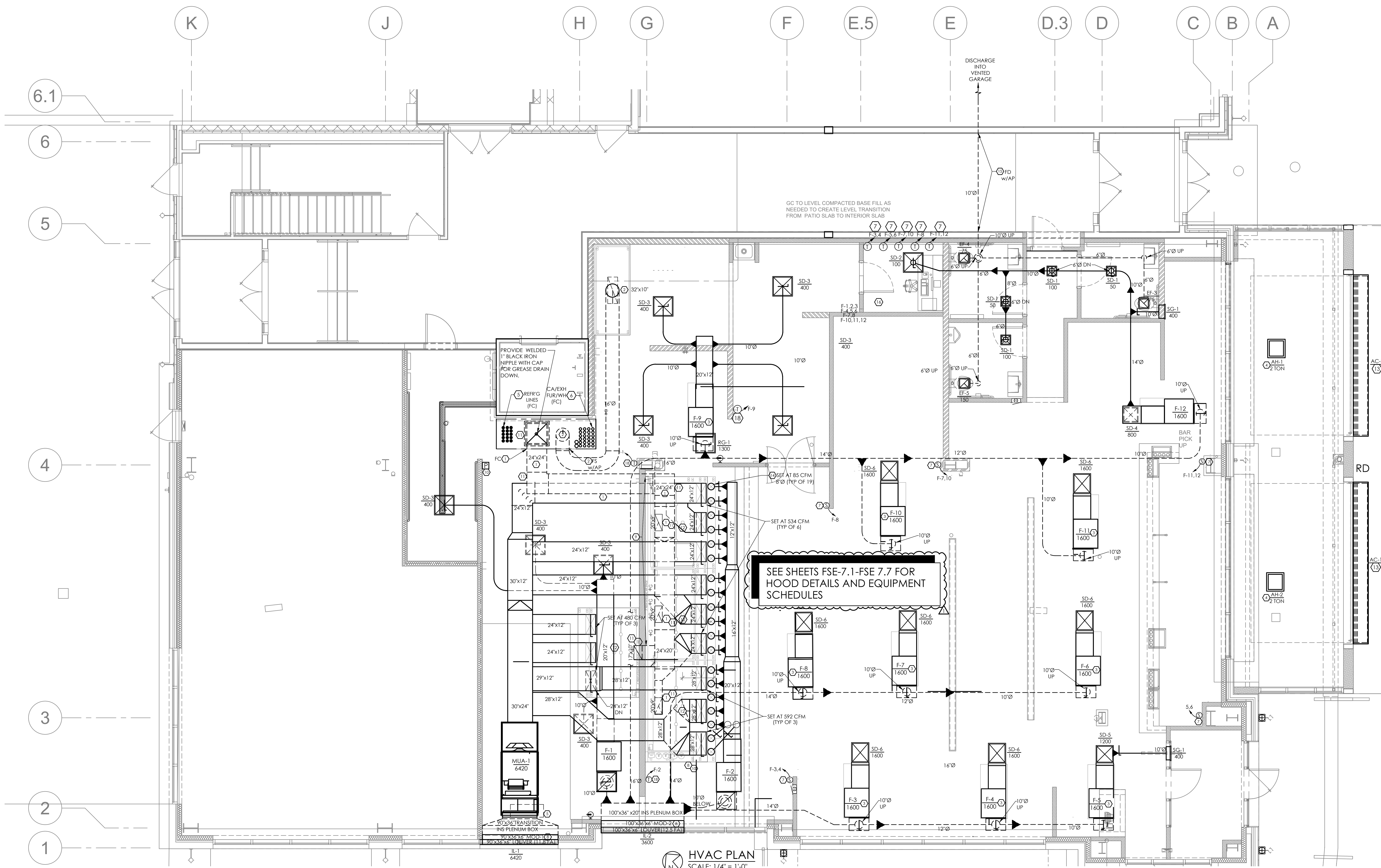
KITCHEN SOCIAL
 MONTGOMERY QUARTER BUILDING 1 FH
 9340 MONTGOMERY ROAD
 MONTGOMERY, OHIO 45242
 SCALE: DRAWN: DSN: CHK: FRM: AS

SEAL/STAMP:



5039-22-001

SHEET
 HVAC PLAN
 H1.0



HVAC LEGEND			
	TYPE CFM	DIFFUSER DESIGNATION	DUCT SMOKE DETECTOR
		EXHAUST FAN	DUCT TRANSITION/ BRANCH DUCT TAKEOFF
		S.A. DIFFUSER	TURNING VANE
		R.A. DIFFUSER	THERMOSTAT X-UNIT #
		MANUAL DAMPER	SPACE SENSOR X-UNIT #
OA/SA/RA	OUTSIDE/SUPPLY/RETURN AIR	(E) / (R) / (N)	EXISTING/RELOCATED/ NEW
		CONNECT TO EXISTING	ROOF MOUNTED EQUIPMENT

HVAC CODED NOTES

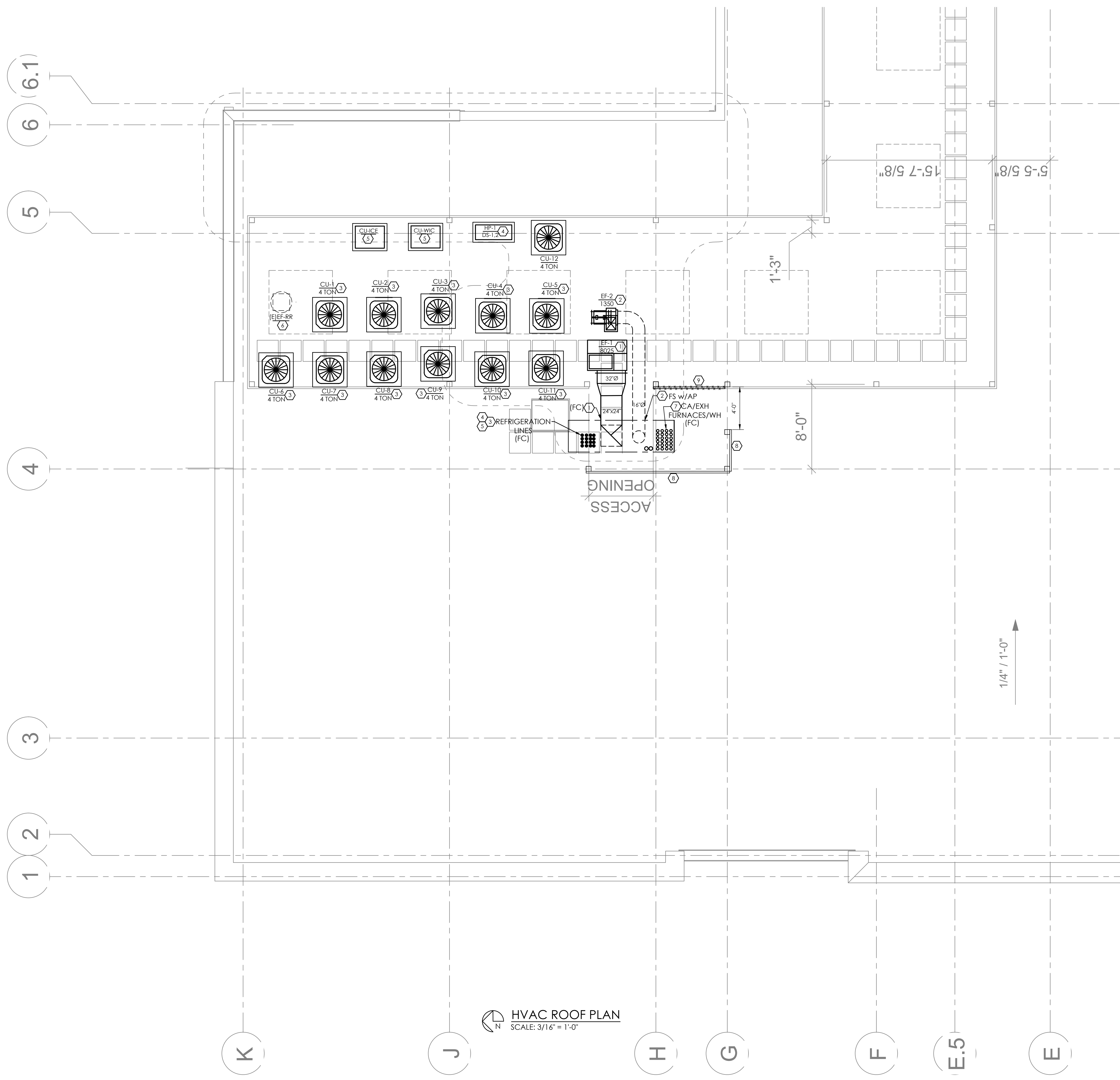
1. HVAC CONTRACTOR TO EXTEND 1/2" BLACK IRON WELDED EXHAUST DUCT FROM HOOD CONNECTION TO EXHAUST MAIN. ROUTE EXHAUST MAIN @ 1/4" / FT SLOPE TO LANDLORD CHASE. SEAL CHASE OPENING W/ 2 HR UL RATED FIRE CAULKING. EXTEND GREASE DUCT UP THROUGH 2ND FLOOR TO EF-1. SEE SHEET H1.1 ROOF PLAN FOR CONTINUATION. WRAP DUCT W/ 2 LAYERS OF FIREMASTER DUCT WRAP FROM HOOD CONNECTION TO UTILITY SET FAN. SEE KITCHEN EQUIPMENT HOOD PLANS FOR ADDITIONAL HOOD INFORMATION.
2. TYPE 2 DISHWASHER HOOD FURNISHED BY HOOD SUPPLIER AND INSTALLED BY HVAC CONTRACTOR. PROVIDE SQUARE TO ROUND CONNECTION @ HOOD AND EXTEND 26 GA GALVANIZED SPIRAL DUCT TO LANDLORD CHASE. PROVIDE FIRE/SMOKE DAMPER W/ ACCESS PANEL @ PENETRATION OF RATED LANDLORD CHASE. SEE DETAIL 'K' SHEET H2.0. EXTEND DUCT UP THROUGH 2ND FLOOR TO EF-2. SEE SHEET H1.1 FOR CONTINUATION. EC TO INTERLOCK EXHAUST FAN TO RUN WHEN DISHWASHER IS OPERATIONAL. SEE KITCHEN EQUIPMENT HOOD PLANS FOR ADDITIONAL HOOD INFORMATION.
3. F-1-12: NEW 95% GAS FURNACE. PROVIDE 2" UNISTRUT AND 3/8" ALL THROUGH TO HANG UNITS FROM STRUCTURE ABOVE W/AUXILIARY DRAIN PAN UNDER FURNACE AND EVAPORATOR. EXTEND 3/4" SCHEDULE 40 PVC TRAPPED PRIMARY DRAIN FROM FURNACE & EVAPORATOR TO NEAREST AVAILABLE FLOOR DRAIN/MOP SINK W/ PROPER AIR GAP. EXTEND SECONDARY DRAIN TO DRAIN PAN W/ FLOAT SWITCH TO SHUT DOWN UNIT UPON TRIP OF SWITCH. SEE DETAIL AND SCHEDULES ON SHEET H2.0.
4. AH-1&2: AIR HANDLERS MOUNTED TIGHT TO CEILING. COORDINATE LOCATION W/ ALL CEILING ELEMENTS AND LIGHTS. ROUTE 3/4" SCHEDULE 40 PVC CONDENSATE LINE FROM AHU'S TO NEAREST AVAILABLE FLOOR DRAIN/MOP SINK W/ PROPER AIR GAP. COORDINATE ALL ROUTING W/ OWNER'S CONSTRUCTION MANAGER PRIOR TO COMMENCEMENT OF WORK. PROVIDE WIRELESS REMOTE CONTROLLER STORED AT BAR FOR CONTROL OF UNITS. SEE DETAIL AND SCHEDULES ON SHEET H2.0.
5. LICENSED REFRIGERATION CONTRACTOR TO ROUTE REFRIGERANT LINES FROM EVAPORATORS IN WALK-IN COOLER & ICE MACHINE AND EXTEND UP INSIDE LANDLORD CHASE THROUGH 2ND FLOOR PER MFG. INSTALLATION GUIDELINES. SEE SHEET H1.1 ROOF PLAN FOR CONTINUATION. FLASH AND SEAL ROOF PENETRATION WATER/TIGHT. LICENSED REFRIGERATION CONTRACTOR TO OBTAIN A PERMIT UNDER SEPARATE COVER FOR ALL WORK PRIOR TO STARTING ANY WORK. PROVIDE UL RATED FIRE CAULKING @ PENETRATION OF ALL RATED FLOOR & WALL PENETRATIONS TO MEET OR EXCEED HOURLY RATING.
6. EXTEND PROPERLY SIZED SCHEDULE 40 PVC INTAKE/EXHAUST PIPE FROM FURNACE UP THROUGH LANDLORD CHASE TO 2ND FLOOR PER MFG. INSTALLATION GUIDELINES. SEE SHEET H1.1 FOR CONTINUATION. PROVIDE UL RATED FIRE CAULKING @ PENETRATION OF ALL RATED FLOOR & WALL PENETRATIONS TO MEET OR EXCEED HOURLY RATING.
7. HVAC CONTRACTOR SHALL FURNISH AND INSTALL A 7 DAY FULLY PROGRAMMABLE 2 STAGE HEATING / 1 STAGE COOLING THERMOSTAT AND REMOTE SENSOR COMPATIBLE WITH UNIT. MOUNT THERMOSTAT IN OFFICE AT 48" A.F.F. AND SENSOR IN OFFICE AT 60" A.F.F. PROVIDE 24V CONTROL WIRE AND MAKE SYSTEM FULLY FUNCTIONAL. COORDINATE ALL WORK/LOCATIONS W/ TENANT GC PRIOR TO STARTING WORK. PROVIDE W/ TWINNING KIT WHERE 2 UNITS CONTROLLED BY SAME THERMOSTAT/SENSOR.
8. INTERLOCK 120V MOD-1 & 2 TO OPEN WITH MAIN COOK LINE HOOD'S MAKE-UP AIR UNIT FAN OPERATION. COORDINATE W/ GC & HOOD VENDOR FOR TIE-IN TO HOOD CONTROL PANEL.
9. 18 GA STAINLESS STEEL WALL COVERING FURNISHED BY HOOD SUPPLIER & INSTALLED BY G.C. @ BACK HOOD WALL AND 18" BEYOND HOOD EACH SIDE.
10. LICENSED FIRE SUPPRESSION CONTRACTOR HIRED BY HOOD SUPPLIER TO FINALIZE FIRE SUPPRESSION TIE-IN FOR HOOD SYSTEMS. EXTEND TO PRE-PIPED HOOD FIRE SUPPRESSION SYSTEM FURNISHED W/ HOOD PACKAGE. FIRE SUPPRESSION CONTRACTOR TO PROVIDE EMERGENCY PULL STATION @ 36" - 42" AFF AND INSTALL CABLE AND PULLEY TO MAKE FULLY FUNCTIONAL. ALL FIRE SUPPRESSION WORK UNDER SEPARATE PERMIT APPLICATION. PROVIDE CONNECTION TO FIRE ALARM SYSTEM. UPON TRIP OF FIRE SUPPRESSION SYSTEM TO SIGNAL F.A. SYSTEM.
11. HVAC CONTRACTOR TO PROVIDE GREASE DUCT CLEANOUTS IN LOCATIONS AND SIZES AS SHOWN ON THE PLAN AND REQUIRED BY CODE FOR PROPER CLEANING OF EXHAUST DUCT. SEE GENERAL NOTE #23 ON SHEET H1.1 FOR EXHAUST DUCT REQUIREMENTS.
12. HVAC CONTRACTOR TO INSTALL HEAT SENSOR IN HOOD EXHAUST DUCT & CONTROL WIRING TO TURN ON EXHAUST FANS. HEAT SENSOR SUPPLIED WITH HOOD PACKAGE.
13. AC-1&2: EXTERIOR AIR CURTAIN. RECESS MOUNTED ADJACENT TO EXTERIOR GARAGE DOORS. BERNER #IDC12-4192A-195'L x 18"W x 15"D. 14 MCA / 20A MOCP - 208V - 1PH. FURNISHED AND INSTALLED BY GC. WIRED BY EC.
14. HVAC CONTRACTOR TO ROUTE 26 GA GALVANIZED SHEET METAL DUCTS W/ INSULATION WRAP FROM FURNACE F-2 SA DUCT MAIN TO SA PLENUM BOX @ RH-1, 2, 3. SEE KITCHEN EQUIPMENT HOOD PLANS FOR ADDITIONAL HOOD INFORMATION & REQUIREMENTS.
15. HVAC CONTRACTOR TO ROUTE 10"Ø, 26 GA GALVANIZED SPIRAL SHEET METAL EXHAUST DUCT ACROSS CORRIDOR THROUGH BLOCK WALLS TO VENTED PARKING GARAGE. COORDINATE ROUTING AND PLACEMENT OF EXHAUST DISCHARGE IN SPACE. PROVIDE UL RATED FIRE DAMPER PER HOURLY WALL RATING W/ ACCESS PANEL. TERMINATE IN GREENHECK #WL-18X6 WALL LOUVER DISCHARGE.
16. UNDERCUT DOOR 1/2" FOR MAKE-UP AIR TO ROOM.
17. PROVIDE GREENHECK ESD- 603 OR APPROVED EQUAL STATIONARY DRAINABLE LOUVER TO FIT INTO (E) STOREFRONT GLASS OPENING. APPROXIMATE SIZES GIVEN ON PLANS. FIELD VERIFY ACTUAL SIZE AND DIMENSION ON SITE AND SEND SUBMITTALS W/ COLOR AND PERFORMANCE OF LOUVER. PROVIDE W/ 120V MOTOR OPERATED DAMPER TO OPEN DURING OPERATION OF COOKING HOODS. MOD POWERED OPEN SPRING CLOSE. SEE ARCHITECTURAL PLANS FOR ADDITIONAL INFORMATION AND REQUIREMENTS.
18. HVAC CONTRACTOR SHALL FURNISH AND INSTALL A 7 DAY FULLY PROGRAMMABLE 2 STAGE HEATING, 1 STAGE COOLING THERMOSTAT AND REMOTE SENSOR COMPATIBLE WITH UNIT. MOUNT THERMOSTAT AT 48" A.F.F. PROVIDE 24V CONTROL WIRE AND MAKE SYSTEM FULLY FUNCTIONAL. COORDINATE ALL WORK/LOCATIONS W/ TENANT GC PRIOR TO STARTING WORK.

HVAC GENERAL NOTES

- HVAC CONTRACTOR TO PROVIDE 1 YR PARTS AND LABOR WARRANTY ON ALL WORK. PROVIDE 5 YEAR COMPRESSOR WARRANTY AND 10 YEAR HEAT EXCHANGER WARRANTY ON ALL HVAC EQUIPMENT.
- HVAC CONTRACTOR SHALL BE RESPONSIBLE FOR COORDINATION OF ALL TRADES, LANDLORD REQUIREMENTS, CEILING HEIGHTS AND EXISTING STRUCTURAL CONDITIONS PRIOR TO FABRICATION OF ANY DUCTWORK OR ORDERING OF ANY EQUIPMENT.
- ALL WORK SHALL BE IN STRICT ACCORDANCE WITH ALL FEDERAL, STATE AND LOCAL CODES AND ORDINANCES.
- FURNISH ALL LABOR, MATERIALS, TOOLS, INCIDENTALS AND DETAILS NECESSARY TO PROVIDE A COMPLETE HEATING, VENTILATING, AIR CONDITIONING SYSTEM. INCLUDE ANY LABOR AND MATERIAL NOT SPECIFICALLY MENTIONED, BUT NECESSARY TO PROVIDE A COMPLETE AND OPERATING SYSTEM. ALL WORK SHALL BE INSTALLED IN A PROFESSIONAL MANNER AND SHALL MEET ALL THE REQUIREMENTS OF THE STATE BUILDING CODE, CITY BUILDING CODE, SAFETY AND HEALTH CODES, NFPA CODES AND ALL OTHER APPLICABLE CODES AND REQUIREMENTS. ALL COSTS FOR SAID REQUIREMENTS SHALL BE INCLUDED IN THIS CONTRACTORS BID PRICE.
- HVAC CONTRACTOR SHALL SECURE AND PAY FOR ALL REQUIRED PERMITS AND INSPECTIONS AND PERFORM ALL TESTS CALLED FOR OR REQUIRED AS A PART OF HIS WORK. FURNISH APPROVED CERTIFICATE OF FINAL INSPECTION, AND TURN OVER TO OWNER AT COMPLETION OF PROJECT.
- HVAC PLANS ARE DIAGRAMMATIC, NOT SHOWING EVERY ITEM IN EXACT LOCATION OR DETAIL. MEASUREMENTS AND LOCATIONS MUST BE FIELD VERIFIED AND COORDINATED WITH ARCHITECTURAL, HVAC, FIRE PROTECTION, STRUCTURAL, ELECTRICAL AND OTHER BUILDING DRAWINGS.
- HVAC CONTRACTOR TO PROVIDE TENANT WITH AS-BUILT DRAWINGS, ALL EQUIPMENT SHOP DRAWINGS, INFORMATION ON THERMOSTATS, CONTROL WIRING DIAGRAMS AND OTHER PERTINENT INFORMATION AT COMPLETION OF PROJECT.
- PROVIDE AN INDEPENDENT AABC OR NEBB CERTIFIED AIR BALANCE ON ALL HVAC EQUIPMENT FOR MINIMUM AND ECONOMIZER OA OPERATION, HOOD SYSTEM AND FANS.
- NEW DUCTS USED TO CONVEY THE CONDITIONED AIR SUPPLY AND VENTILATION AIR ARE TO BE MADE OF CONTINUOUS SHEET METAL. PROVIDE SPIRAL DUCT IN OPEN CEILING AREAS.
- DUCT LININGS (THERMAL AND ACOUSTICAL), VIBRATION ISOLATION CONNECTORS, FLEXIBLE DUCT CONNECTORS, AND DUCT TYPE TO BE APPROVED BY LOCAL CODE.
- ALL RECTANGULAR RETURN AIR, AND SUPPLY AIR DUCTWORK SHALL BE INTERNALLY INSULATED WITH 1" INTERNALLY LINED DUCT GLUED AND PINNED. ALL OA DUCT TO BE WRAPPED W/ 1/2" THICK, 1.5 LBS. DENSITY FOIL FACED FIBERGLASS INSULATION TO EQUAL MINIMUM OF R-5 OR GREATER AS REQUIRED BY LOCAL CODES AND AUTHORITIES. SPIRAL SA DUCT TO BE SPECIALLY W/ 1" INTERNAL INSULATION UNITS MCGLU OR EQUAL. IN GENERAL, INSTALL DUCTWORK TIGHT TO UNDERSIDE OF STRUCTURE UNLESS OTHERWISE NOTED OR REQUIRED BY FIELD CONDITIONS. COORDINATE EXACT MOUNTING HEIGHT IN FIELD WITH GENERAL CONTRACTOR.
- ALL DUCTWORK SHALL BE SHEET METAL FABRICATED IN ACCORDANCE WITH ASHRAE GUIDELINES AND SMACNA MANUAL LATEST EDITIONS.
- ALL BRANCH TAKE-OFFS SHALL BE PROVIDED WITH MANUAL BALANCING DAMPERS.
- 1" INSULATED FLEXIBLE DUCTS SHALL BE MAXIMUM 10' LONG AND SHALL MEET INSTALLATION AND MATERIAL REQUIREMENTS OF LOCAL CODES. INSULATED DUCT TO BE 1" THICK, 1-1/2 LBS DENSITY W/ FOIL FACE TO EQUAL MINIMUM OF R-5 OR GREATER AS REQUIRED BY LOCAL CODES AND AUTHORITIES.
- THE HVAC CONTRACTOR SHALL FURNISH AND INSTALL A COMPLETE TEMPERATURE CONTROL SYSTEM TO INCLUDE SEVEN DAY PROGRAMMABLE THERMOSTAT COMPATIBLE WITH UNIT.
- ALL TEMPERATURE CONTROLS, FIRE ALARM COMPONENTS, EQUIPMENT NAMEPLATES, LABELS, OR COLOR CODED COMPONENTS SHALL BE MASKED DURING PAINTING TO PREVENT DAMAGE FROM OVER-SPRAY OR OBSCURING INFORMATION.
- ALL LOW VOLTAGE WIRING AND CONDUIT REQUIRED FOR HVAC EQUIPMENT SHALL BE FURNISHED AND INSTALLED BY HVAC CONTRACTOR. CONTRACTOR SHALL BE RESPONSIBLE FOR COORDINATING WITH ELECTRICAL CONTRACTOR ALL WIRING AND CONDUIT REQUIRED FOR EQUIPMENT OPERATION AND CONTROL.
- PROVIDE OPERATIONAL MANUALS, INSTRUCT OWNER ON EQUIPMENT USE, AND TEST ALL UNITS AND CONTROLS FOR PROPER SEQUENCING.
- IT IS THE CONTRACTOR'S RESPONSIBILITY TO ENSURE THAT THE HVAC EQUIPMENT COMPONENTS ARE INSTALLED AT LOCATIONS AND ELEVATIONS WHICH MAKE THEM READILY ACCESSIBLE FOR ROUTINE MAINTENANCE WITHOUT REQUIRING ANY EXTRAORDINARY MEASURES.
- ALL ROOF WORK TO BE PERFORMED BY APPROVED ROOFING CONTRACTOR @ HVAC CONTRACTOR'S EXPENSE. SEAL ALL ROOF PENETRATIONS WATERIGHT.
- MAINTAIN 10' MINIMUM SEPARATION BETWEEN ALL OA OPENINGS AND EXHAUST OR VENT OPENINGS.
- MANUFACTURERS LISTED ON THE DRAWINGS WERE USED AS THE BASIS OF DESIGN. THE CONTRACTOR MAY PROVIDE AN APPROVED EQUAL MANUFACTURED PRODUCT. THE CONTRACTOR IS ENTIRELY RESPONSIBLE FOR ANY AND ALL COSTS REQUIRED TO ALTER THE SYSTEM DESIGN, WHETHER IDENTIFIED OR NOT IDENTIFIED BY THE ENGINEER OR ARCHITECT. SHOULD AN APPROVED EQUAL MANUFACTURER BE SUPPLIED.
- ALL TYPE 1 HOOD EXHAUST DUCTWORK TO BE 16 GA WELDED BLACK IRON. PROVIDE 2 LAYERS OF 3M FIRE MASTER DUCT WRAP TO FORM ZERO INCH TO COMBUSTIBLE 2 HR ASSEMBLY OVER DUCT WHERE ADEQUATE CLEARANCE TO COMBUSTIBLES CANNOT BE OBTAINED. SPECIALTY MANUFACTURE APPROVED ROUND EXHAUST DUCT w/ 0' CLEARANCE TO COMBUSTIBLE AND 2 HOUR RATING MAY BE USED FOR EXHAUST DUCT IN USE OF WELDED DUCT W/ DUCT WRAP.
- THE HVAC CONTRACTOR IS RESPONSIBLE TO PROVIDE ALL HANGERS, SUPPORTS & ACCESSORIES AS REQUIRED BY ALL CODES.

HVAC CODED NOTES

- EF-1: HVAC CONTRACTOR TO EXTEND 16 GA BLACK IRON WELDED EXHAUST DUCT FROM FAN THROUGH SIDE OF DOGHOUSE W/ FIRE CAULKING THEN DOWN THRU ROOF TO 2ND FLOOR. EXTEND THROUGH 2ND FLOOR TO FIRST FLOOR TO KH-1, 2, 3, 4. WRAP DUCT W/ 2 LAYERS OF FIRE MASTER DUCT WRAP FROM HOOD. CONNECT TO UTILITY SET FAN. SEE EXTERIOR DUCT COVERING DETAIL THIS SHEET. UTILITY SET EXHAUST FANS ARE FURNISHED BY HOOD SUPPLIER W/ THE KITCHEN EQUIPMENT PACKAGE AND INSTALLED BY HVAC CONTRACTOR. SEE KITCHEN EQUIPMENT HOOD PLANS FOR ADDITIONAL HOOD INFORMATION.
- EF-2: HVAC CONTRACTOR TO EXTEND 26 GA GALVANIZED SPIRAL DUCT FROM UTILITY SET EXHAUST FAN THROUGH SIDE OF DOGHOUSE THEN DOWN THROUGH ROOF TO 2ND FLOOR. EXTEND DOWN THROUGH 2ND FLOOR TO TYPE 2 DISHWASHER HOOD ON 1ST FLOOR. SEE SHEET H1.0 FOR ROUTING. EC TO INTERLOCK DISH HOOD EXHAUST FAN ON WHEN DISHWASHER. DISHWASHER IS OPERATIONAL. SEE KITCHEN EQUIPMENT HOOD PLANS FOR ADDITIONAL HOOD INFORMATION.
- CU-1-12: NEW ROOF MOUNTED CONDENSING UNITS. PROVIDE 2" PLASTIC PAD 3" LARGER THAN. EXTEND REFRIGERATION LINES FROM CU THROUGH SIDE OF DOGHOUSE TO MATCHING EVAPORATOR @ FURNACE. PER MFG. LISTED REFRIGERATION GUIDELINES. PROVIDE UL 2 HR FIRE CAULKING THROUGH RATED SHAFT. SEE DETAIL AND SCHEDULES ON SHEET H2.0.
- HP-1: NEW ROOF MOUNTED HYPER HEAT PUMP UNIT. PROVIDE 2" PLASTIC PAD 3" LARGER THAN HEAT PUMP W/ 6" PUMP-UPS FOR PROPER DRAINAGE DURING DEFROST CYCLE. EXTEND INSULATED REFRIGERATION LINES FROM HEAT PUMP TO AHU'S PER MFG. LISTED REFRIGERATION GUIDELINES. PROVIDE UL 2 HR FIRE CAULKING THROUGH RATED SHAFT. SEE DETAIL AND SCHEDULES ON SHEET H2.0.
- REFRIGERATION CONTRACTOR TO EXTEND REFRIGERANT LINES FROM EVAPORATOR IN WALK-IN COOLER & ICE MACHINE TO ROOF MOUNTED CONDENSERS PER MFG. INSTALLATION GUIDELINES. PROVIDE 2" PLASTIC PAD 3" LARGER THAN CONDENSER. SEE DETAILS ON SHEET H2.0. FLASH AND SEAL ROOF PENETRATION WATERIGHT. PROVIDE UL 2 HR FIRE CAULKING THROUGH RATED SHAFT. LICENSED REFRIGERATION CONTRACTOR TO OBTAIN A PERMIT UNDER SEPERATE COVER FOR ALL WORK PRIOR TO STARTING ANY WORK.
- (E) LANDLORD ROOF MOUNTED RESTROOM EXHAUST FAN TO REMAIN. MAINTAIN CLEARANCE FROM UNIT TO ALLOW FOR PROPER SERVICING.
- EXTEND CONCENTRIC INTAKE/EXHAUST PIPE UP THROUGH ROOF FROM FURNACES & WH BELOW. FLASH AND SEAL WATERIGHT. PROVIDE UL 2 HR FIRE CAULKING @ THROUGH PENETRATION OF RATED SHAFT. SEE SHEET H1.0 FOR CONTINUATION.
- NEW WALL SCREEN & POST TO MATCH (E) LANDLORD'S SCREENING. GC TO COORDINATE ALL WORK W/ LANDLORD PRIOR TO STARING WORK. SEE ARCHITECTURAL PLANS.
- REMOVE EXISTING SECTION OF SCREENING AND PROVIDE NEW SUPPORT POST TO MATCH LANDLORD'S WORK. SEE ARCHITECTURAL PLANS.



HVAC ROOF PLAN
SCALE: 3/16" = 1'-0"

KITCHEN SOCIAL

ARCHITECT/ENGINEER LOGO:

ABBOT STUDIOS
ARCHITECTS + PLANNERS +
DESIGNERS, LLC
471 E. BROAD ST., SUITE 1700
COLUMBUS, OH 43215
PHONE: (614) 461-0101
FAX: (614) 461-1107

ISSUE DATE: 03-10-23	NO REVISIONS THIS SHEET
REVISION: 03-24-2023 - REVISION 1 BD COMMENTS	
KITCHEN SOCIAL	FRM: AS
MONTGOMERY QUARTER BUILDING 1 FH	CHK:
9340 MONTGOMERY ROAD	DSN:
MONTGOMERY, OHIO 45242	DRAWN:
SCALE:	SCALE:

SEAL/STAMP:

THE ARCHITECT ASSUMES NO RESPONSIBILITY OR LIABILITY FOR THE USE OF THESE PLANS FOR ANY PROJECT OTHER THAN SPECIFICALLY AUTHORIZED BY HER/HIS FIRM AND SHALL BE LIABLE FOR SUCH SERVICE. LOCATION IN THE STATE SHOWN ON THE SEAL. THIS SEAL IS VALID FOR ONLY ONE PROJECT IN ACCORD WITH THE STATED DESIGN CRITERIA.

5039-22-001

SHEET

HVAC ROOF PLAN

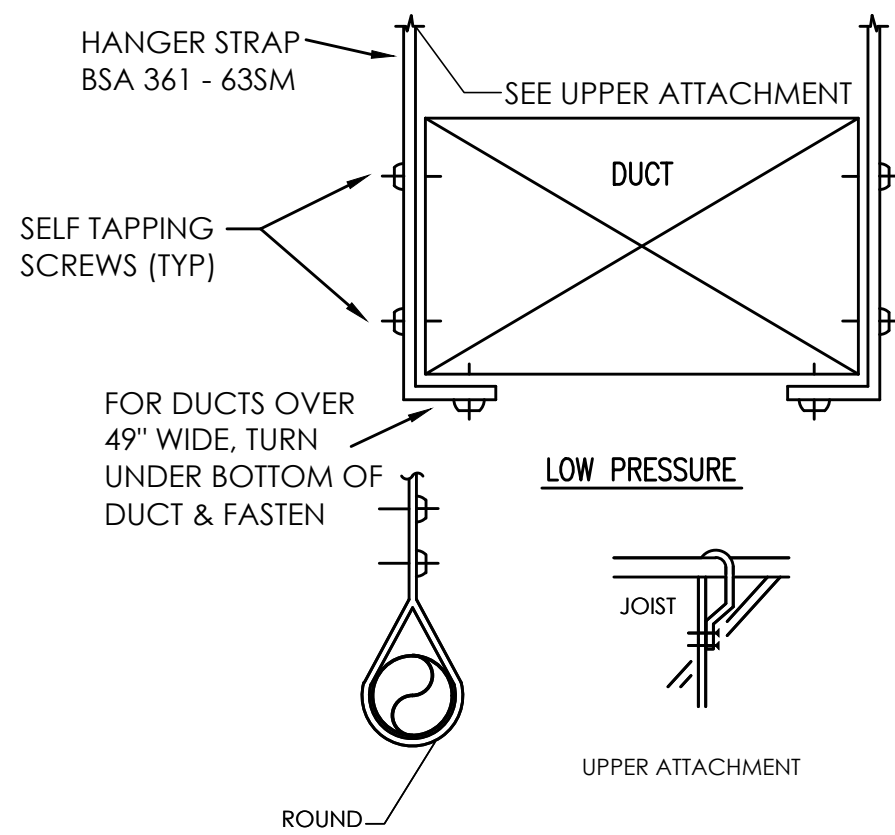
H1.1

TITUS AIR DISTR. DEVICES (OR APPROVED EQUAL)

NOTES: 1. SYMBOL KEY - FIRST LETTER: S-SUPPLY R-RETURN E-EXHAUST F-FLOOR * SEE PLANS SECOND LETTER: D-DIFFUSER R-REGISTER G-GRILLE
 2. CATALOG NUMBERS REFER TO TITUS AIR DEVICES. SEE PLANS FOR DUCT NECK SIZES.
 3. 1, 2, 3, AND 4-WAY AIR DEVICES ARE DETERMINED BY DIRECTIONAL ARROWS ON DRAWINGS.
 4. DAMPERS SHALL BE OPERABLE FROM FACE.
 "A" YOUNG'S REGULATOR WITH REMOTE SWITCH
 "C" BUTTERFLY (BDS)

5. FINISH
 "B" GOLDEN SAND
 "C" BAKED WHITE ENAMEL FINISH STANDARD
 "P" PAINT TO ARCHITECTURAL CALLOUT BORDER STYLE
 "A" SURFACE MOUNTED
 "B" LAY-IN MOUNTING
 "C" LAY-IN PLASTER FRAME

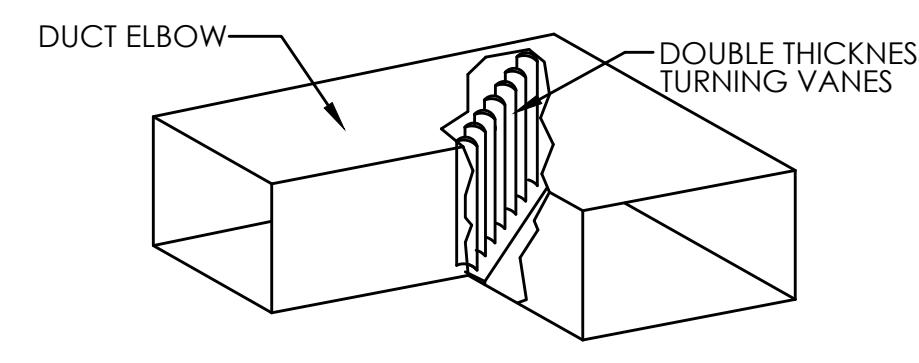
SYMBOL	CATALOG #	SIZE		MOUNTING		MATERIAL		FINISH	BORDER STYLE	REMARKS
		MOD.	NECK	SIDE WALL	CELL-ING	STEEL	ALUM.			
SD-1	OMNI	12"x12"	6"Ø					"C"	"C"	
SD-2	TMS	24"x24"	6"Ø					"C"	"B"	
SD-3	8F	24"x24"	10"Ø					"C"	"B"	
SD-4	TDC	23.5" x 23.5"	18" x 18"					"P"	"A"	
SD-5	TDC	26.5x 26.5	21"x21"					"P"	"A"	
SD-6	TDC	29.5"x26.5"	24"x21"					"C"	"A"	
RG-1	50F	24"x24"	22"x22"					"C"	"B"	PROVIDE 6" HIGH INS PLENUM BOX



- NOTES:
- ALL DUCTWORK TO BE HUNG FROM BUILDING STRUCTURAL NOT TO BE SUPPORTED FROM HUNG CEILING.
 - WHEN DUCT AREA EXCEEDS 8 SQ.FT., ANGLE STIFFENERS REQUIRED AROUND CIRCUMFERENCE EVERY 48".
 - FOR DUCTS OVER 48" WIDE, HANGERS SHALL TURN UNDER DUCT AT LEAST 2" AND SHALL BE FASTENED TO THE BOTTOM AS WELL AS THE SIDES OF THE DUCT.
 - FOR DUCTS WITH CROSS-SECTIONAL AREA OF 4 SQ.FT. OR LESS, HANGERS SHALL NOT BE MORE THAN 8 FEET APART.
 - FOR DUCTS WITH A CROSS-SECTIONAL AREA OF MORE THAN 4 SQ.FT., BUT NOT OVER 8 SQ.FT., HANGERS SHALL NOT BE MORE THAN 6 FEET APART.
 - FOR DUCTS WITH A CROSS-SECTIONAL AREA OF OVER 8 SQ.FT., HANGERS SHALL NOT BE MORE THAN 4 FEET APART.
 - DISTANCE BETWEEN HANGERS SHALL BE MEASURED LINEARLY ALONG THE DUCT.
 - VERTICAL DUCTS SHALL BE SECURELY SUPPORTED AT EACH FLOOR LEVEL BY CONTINUOUS LENGTHS OF STRUCTURAL ANGLES OF A SIZE AT LEAST EQUIVALENT TO THAT FOR STIFFENING. THE ANGLES SHALL BE FASTENED TO THE OPPOSITE SIDES OF THE DUCT AND SHALL EXTEND ACROSS THE OPENING AND BEAR UPON THE
 - DISTANCE BETWEEN DUCT HANGERS SHALL BE IN ACCORDANCE WITH LATEST EDITION OF SMACNA.

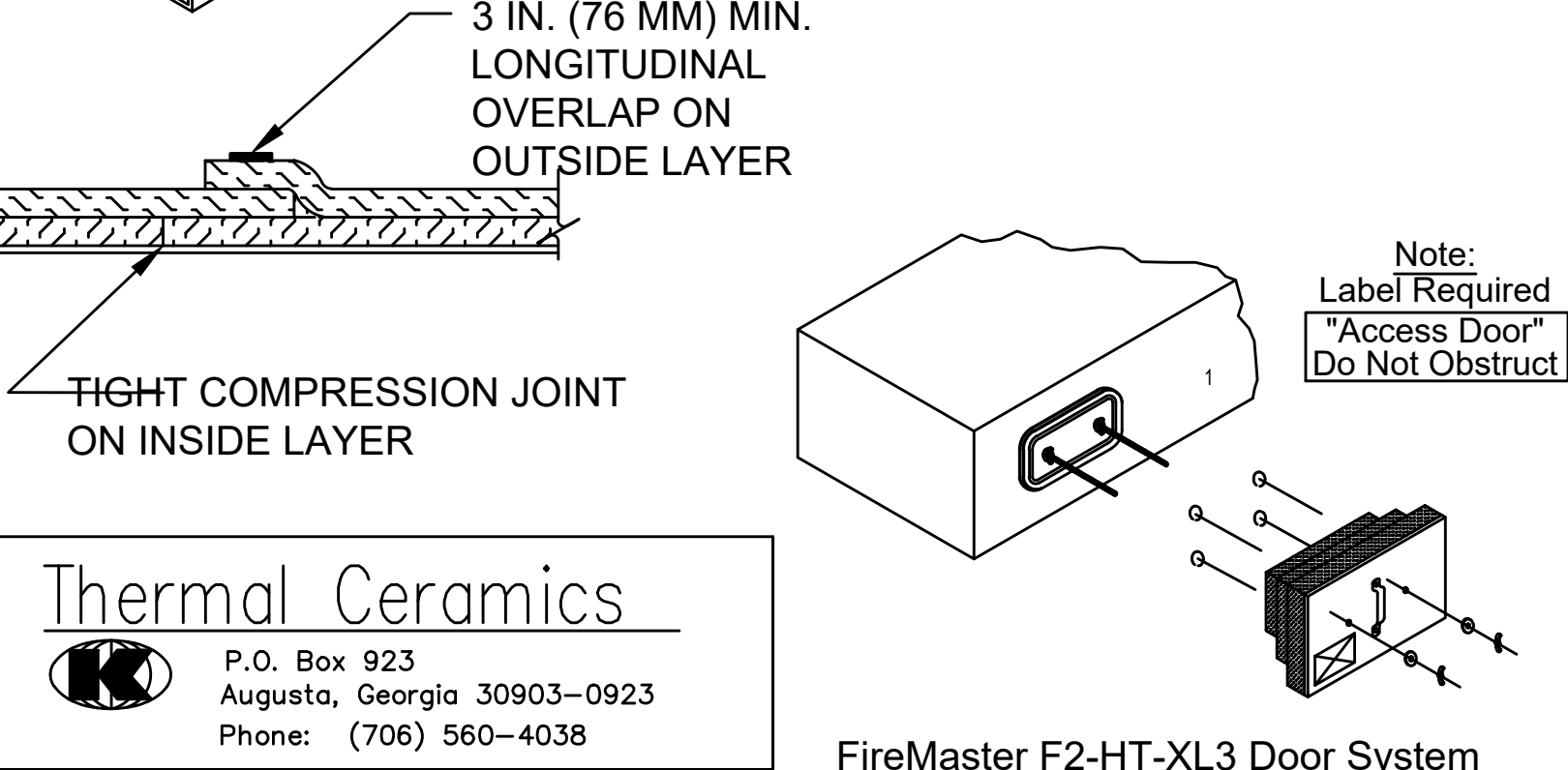
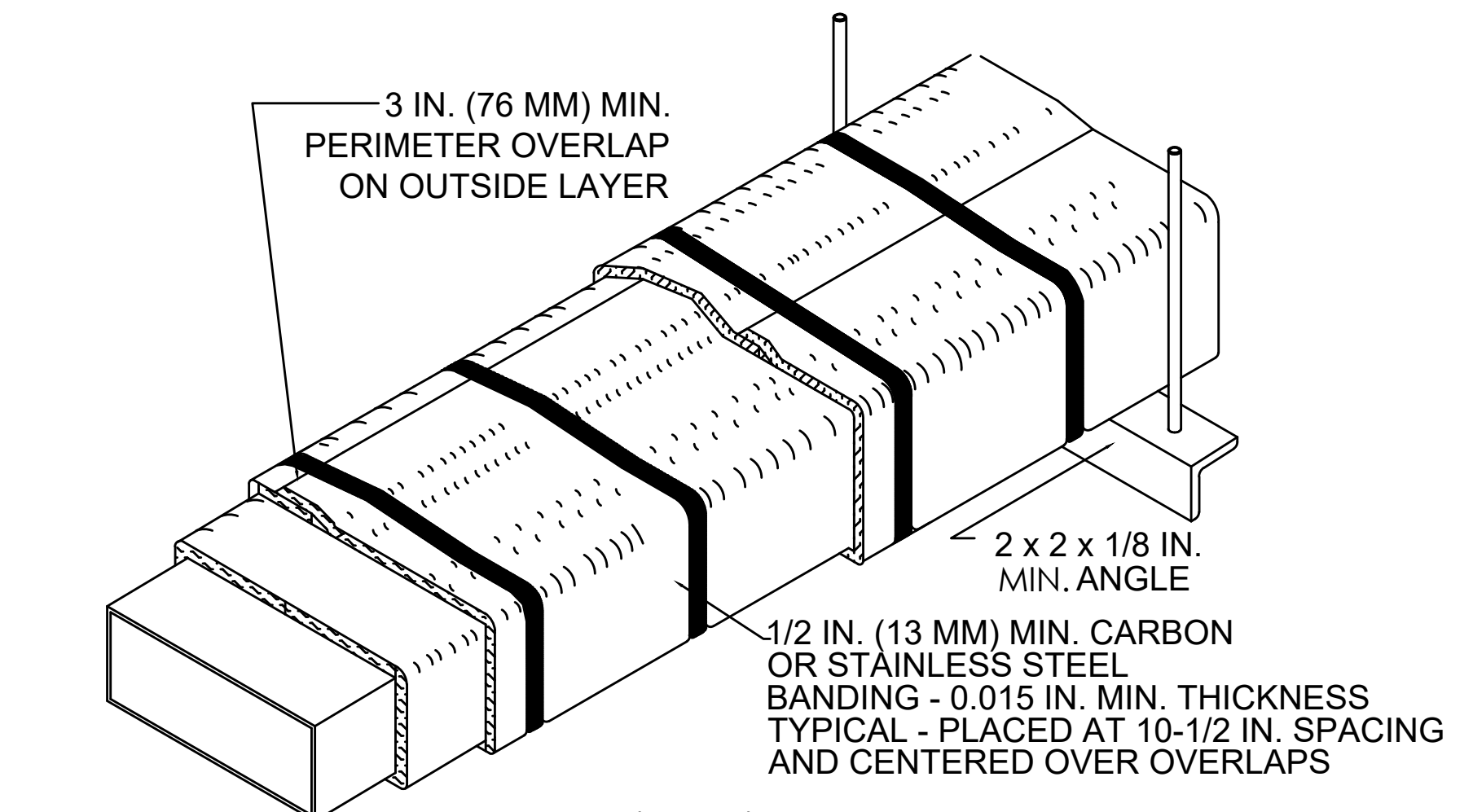
A DUCT MOUNTING DETAIL

N.T.S.



B TURNING VANE DETAIL

N.T.S.



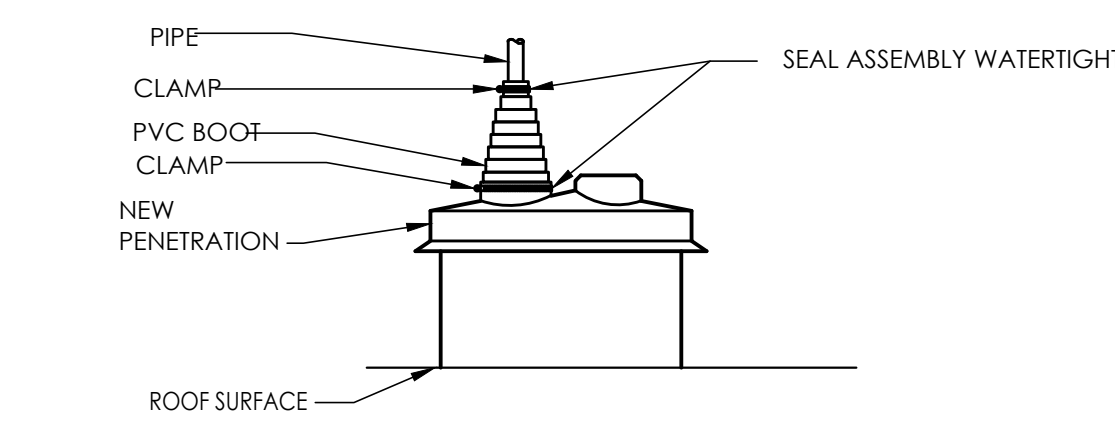
Thermal Ceramics
 P.O. Box 823
 Augusta, Georgia 30903-0923
 Phone: (706) 560-4038

FireMaster F2-HT-XL3 Door System

- THERMAL CERAMICS FIREMASTER FASTWRAP XL OR PYROSCAT XL HAS BEEN TESTED IN ACCORDANCE WITH ASTM E2336 TO PROVIDE ZERO CLEARANCE TO COMBUSTIBLES AND MEETS THE REQUIREMENTS FOR ONE OR TWO HOUR ENCLOSURES. THROUGH PENETRATIONS FIRESTOP SYSTEMS ARE TESTED IN ACCORDANCE WITH EITHER ASTM E 814 OR UL 1479. ICC-ES APPROVAL PER REPORT ESR 2213 OR ESR 2832. UNDERWRITERS LABORATORIES (UL) LISTINGS SHOW COMPLIANCE TO UL 1479 FOR THROUGH PENETRATION FIRESTOP SYSTEMS.
- COMPLIANT TO THE FOLLOWING CODES:
 NFPA 96
 2003 AND 2006 INTERNATIONAL MECHANICAL CODES
 2006 UNIFORM MECHANICAL CODE.
- INSULATION APPLIED IN TWO LAYERS WITH TIGHT COMPRESSION JOINT ON INSIDE LAYER AND 3 INCH MINIMUM OVERLAPS ON BOTH PERIMETER AND LONGITUDINAL OVERLAPS ON OUTSIDE LAYER.
- GREASE EXHAUST DUCT RUNS FROM THE HOOD EXHAUST CONNECTION UP TO THE EXHAUST FAN ON THE ROOF WITH MINIMAL TURNS OR BENDS AND MAINTAINING MINIMUM 1/4 INCH VERTICAL RISE PER 12 UNITS HORIZONTAL RUN. NFPA 96 COMPLIANT ACCESS DOORS LOCATED AS REQUIRED BY CODE.
- THERMAL CERAMICS FIREMASTER ACCESS DOORS AS SPECIFIED IN ICC-ES BUILDING CODE REPORTS ESR 2213 OR ESR 2832.
- ROOF MOUNTED EXHAUST FAN IS MOUNTED ON A HINGED BASE WHICH ALLOWS ACCESS TO THE DUCT FROM THE ROOF.
- SUPPORT HANGER SYSTEMS DO NOT NEED TO BE WRAPPED PROVIDED THE HANGER RODS ARE AT LEAST A MINIMUM OF 3/8 IN. DIAMETER. USE MINIMUM 2 X 2 X 1/8 IN. STEEL ANGLE OR SMACNA EQUIVALENT SUPPORT SYSTEM.
- THERMAL CERAMICS DUCT ENCLOSURE SYSTEM SHALL BE INSTALLED IN ACCORDANCE WITH MANUFACTURERS INSTRUCTIONS.
- THERMAL CERAMICS DUCT WRAP SHALL BE INSTALLED ON THE DUCT FROM THE HOOD CONNECTION TO THE CONNECTION TO THE FAN.

D GREASE EXHAUST DUCT WRAP DETAIL

N.T.S.



C ROOF PIPE/REFRIGERANT LINE CURB

N.T.S.

AIR BALANCE SCHEDULE

DESIG.	SUPPLY	O.A.	RETURN	EXHAUST	BALANCE
F-1	1600	300	1300	---	+300
F-2	1600	300	1300	---	+300
F-3	1600	300	1300	---	+300
F-4	1600	300	1300	---	+300
F-5	1600	300	1300	---	+300
F-6	1600	300	1300	---	+300
F-7	1600	300	1300	---	+300
F-8	1600	300	1300	---	+300
F-9	1600	300	1300	---	+300
F-10	1600	300	1300	---	+300
F-11	1600	300	1300	---	+300
F-12	1600	300	1300	---	+300
MAU-1	--	6420	--	---	+6420
EF-1	--	--	--	8025	-8025
EF-2	--	--	--	1350	-1350
EF-3	--	--	--	75	-75
EF-4	--	--	--	75	-75
EF-5	--	--	--	150	-150
TOTAL		+10020	--	-9675	+345

MINIMUM EXHAUST RATE

TABLE 6-4
 ASHRAE STANDARD 62.1-2010

UNIT	SPACE	AREA SQ. FT.	CFM/UNIT	EXHAUST (UNIT)	CFM/SQFT	EXHAUST (CFM)	TOTAL CFM REQUIRED	TOTAL CFM PROVIDED
EF-3	UNISEX RR	72	--	2 @ 70	--	140	140	150
EF-4	UNISEX RR	68	--	2 @ 70	--	140	140	150
EF-5	UNISEX RR	68	--	2 @ 70	--	140	140	150
EF-1.2	KITCHEN	1843	-	-	0.7	1290	1290	9375

LOUVER SCHEDULE

MARK	MFG.	MODEL #	CFM	FREE AREA	VELOCITY F/M	WXH SIZE	SERVES	NOTES
IL-1	GREENHECK	ESD-603	6420	11.8	544	90"X36"	MUA-1	1,2,3,4
IL-2	GREENHECK	ESD-603	3600	12.5	288	100"X36"	F-1,2,3,4,5,6,7,8,9,10,11,12	1,2,3,4

- COLOR SELECTED BY ARCHITECT.
- 120V MOTOR OPERATED DAMPER, SPRING CLOSED, WIRED TO POWER OPEN UPON ACTIVATION OF LISTED EQUIPMENT.
- COORDINATE EXACT LOCATION WITH G.C. AND LANDLORD. INCLUDE STRUCTURAL ENGINEERING COST FOR ALL EXTERIOR OPENINGS.
- PROVIDE WITH INSECT SCREEN.

EXHAUST FAN SCHEDULE

ITEM	MFG.	MODEL	CFM	S.P.	DRIVE	MOTOR				REMARKS
						H.P.	VOLTS	PH	H.Z.	
EF-3.4	GREENHECK	SP-B90	75	.25	DIRECT	49.7WATTS	120	1Ø	60	1, 2, 3, 4
EF-5	GREENHECK	SP-B150	150	.25	DIRECT	128 WATTS	120	1Ø	60	1, 2, 3, 4

1. UNIT TO BE SUPPLIED WITH BACKDRAFT DAMPER.
 2. PROVIDE WITH HANGING ISOLATION KIT.
 3. COORDINATE FINAL MOUNTING LOCATION WITH ARCHITECT.
 4. CONTROLLED BY LIGHT SWITCH

GAS FIRED SPLIT SYSTEM SCHEDULE

INDOOR UNIT										OUTDOOR UNIT									
SYMBOL	BRYANT MODEL #	S.A. CFM	O.A. CFM	ESP	BLOWER HP	MBH INPUT	MBH OUTPUT	AFUE	VOLTS	FLA MOP	SYMBOL	BRYANT MODEL #	SEER	COOLING CAP. TOT.	SENS.	VOLTS/PH	MCA	MOP	REMARKS
F-3.4 F-5.6 F-7.10	926TB60100V21	1600	300	0.70	.75	100/65	97/63	95.5	120/1	14.7/20	CU-3.4 CU-5.6 CU-7.10 CU-11,12	GA4SAN44800N	14	42.56	31.98	208/1	24.5	40	1,3,4,5,6,7,8,9
F-1,2,8,9	926TB60100V21	1600	300	0.70	.75	100/65	97/63	95.5	120/1	14.7/20	CU-1,2,8,9	GA4SAN44800N	14	42.56	31.98	208/1	24.5	40	1,2,4,5,6,7,8,9

- FURNISH & INSTALL PRE-MANUFACTURED AND INSULATED REFRIGERANT LINE SET. (SIZE PER MANUFACTURER'S REQUIREMENTS).
- PROVIDE BID OPTION TO PROVIDE W/ TWINNING KIT DISCRETE TAPPED MOTOR FOR FURNACES (WHERE APPLICABLE). FURNISH & INSTALL MANUFACTURER'S 7-DAY PROGRAMMABLE 2 STAGE HEATING & 1 STAGE COOLING THERMOSTAT. 1ST STAGE HEAT TO TURN ON 1ST STAGE HEAT FURNACE F-X.Y. 2ND STAGE HEAT TO TURN STAGE 2 HEAT FURNACE X.Y. 1ST STAGE COOLING TO TURN ON AC-X.Y.
- FURNISH & INSTALL MANUFACTURER'S 7-DAY PROGRAMMABLE THERMOSTAT W/ 2 STAGE HEAT & 1 STAGE COOLING.
- FURNISH & INSTALL READILY ACCESSIBLE FILTER RACK AND CLEAN FILTER.
- FURNISH & INSTALL SCHEDULE 40 PVC COMBUSTION AND VENT PIPING WITH CONCENTRIC VENT KIT. (SIZE PER MANUFACTURER'S REQUIREMENTS).
- FURNISH & INSTALL PRIMARY & SECONDARY SCHEDULE 40 PVC CONDENSATE DRAIN PIPE AND TERMINATE WITH CODE REQUIRED AIR GAP. CLEARLY MARK PRIMARY AND SECONDARY. SEE FURNACE DETAIL THIS SHEET.
- PROVIDE INSULATED RETURN AIR PLENUM BASE. DO NOT CUT INTO SIDE OF FURNACE.
- PROVIDE WITH LOW AMBIENT PRESSURE SWITCH (KSALA0301410) FOR CU TO RUN TO [09F]. WINTER HARD START KIT, EVAPORATOR FREEZE THERMOSTAT(KSAFT0101AAA), LIQUID LINE SOLENOID VALVE FOR CU (KAALS0201LLSCRANK CASE HEATER (KAACH1601AAA), THERMOSTATIC EXPANSION VALVE (HARD SHUT-OFF)
- PROVIDE CVPMA4521XMC HORIZONTAL CASED EVAPORATOR COIL COMPATIBLE W/ CU.

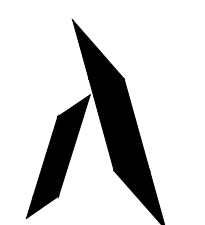
REQUIRED OUTDOOR VENTILATION AIR

TABLE 403.3.1.1
 OMC 2017

UNIT	SPACE	MAX. OCCUPANCY PERSONS/1000 SQFT	AREA SQ. FT.	NO. PEOPLE	OA CFM /PERSON	OA CFM /SQFT	OA CFM PEOPLE	OA CFM SQFT	MINIMUM CFM OUTSIDE AIR REQUIRED
F-3,4,5,6,7,8,10,11,12	DINING	70	2501	175	7.5	0.18	1312	450	1762
F-3,4,5,6,7,8,10,11,12	CORRIDOR	--	281	--	--	0.06	0	17	17
F-3,4,5,6,7,8,10,11,12	OFFICE	5	46	1	5	0.06	5	3	8
TOTAL									1787
VENTILATION EFFECTIVENESS (Ez)									0.8
TOTAL OUTDOOR AIR REQUIRED									2234
300 CFM OUTDOOR AIR PROVIDED BY EACH FURNACE F-3,4,5,6,7,8,10,11,12									2700

KITCHEN SOCIAL

ARCHITECT/ENGINEER LOGO:



ABBOTT STUDIOS
 ARCHITECTS + PLANNERS +
 DESIGNERS, LLC
 471 E. BROAD ST., SUITE 1700
 COLUMBUS, OH 43215
 PHONE: (614) 461-0101
 FAX: (614) 461-1107

ISSUE DATE: 03-10-23
 REVISION: 03-24-2023 - REVISION 1 BD COMMENTS

* NO REVISIONS THIS SHEET

KITCHEN SOCIAL
 MONTGOMERY QUARTER BUILDING 1 FH
 9340 MONTGOMERY ROAD
 MONTGOMERY, OHIO 45242

SCALE:



THE ARCHITECT ASSURES NO RESPONSIBILITY OR LIABILITY FOR THE USE OF THESE PLANS FOR ANY PROJECT OTHER THAN SPECIFICALLY AUTHORIZED BY HER AND SHEER AND SHALL BE HELD RESPONSIBLE FOR ANY LOCATION IN THE STATE SHOWN ON THE SEAL. THIS LICENSE IS ONLY VALID IF USED IN ACCORDANCE WITH THE STATED DESIGN CRITERIA.

5039-22-001

SHEET

HVAC DETAILS

H2.0

COMcheck Software Version 4.1.5.5
Mechanical Compliance Certificate

Project Information
 Energy Code: 90.1 (2010) Standard
 Project Title: Kitchen Social Montgomery
 Location: Montgomery, Ohio
 Climate Zone: 4a
 Project Type: New Construction

Consultant Site: 9340 Montgomery Rd
 Montgomery, OH 45242
 Designer/Client: OH
 Designer/Consultor: EM Engineering Group
 825 East North Broadway Street
 Columbus, OH 43214
 614-225-1390

Mechanical Systems List
Quantity System & Description
 1 HVAC System 2 (Single Zone)
 Split System Heat Pump
 Heating Mode Capacity = 54 kBtu/h
 Proposed Efficiency = 9.5 SEER, Required Efficiency = 7.70 SEER
 Cooling Mode Capacity = 48 kBtu/h
 Proposed Efficiency = 13.0 SEER, Required Efficiency = 13.0 SEER
 Fan System: FAN SYSTEM 2 (HP-1.2 - Compliance (Motor nameplate HP method)) - Passes
 Fans:
 FAN 2 Supply, Constant Volume, 538 CFM, 0.3 motor nameplate hp
 12 HVAC System 3 (Single Zone)
 Heating: 1 each - Central Furnace, Gas, Capacity = 100 kBtu/h
 Proposed Efficiency = 90.00 % (E), Required Efficiency: 85.00 % (E) (or 78% AFUE)
 Cooling: 1 each - Split System, Capacity = 48 kBtu/h, Air-Cooled Condenser
 Proposed Efficiency = 14.00 SEER, Required Efficiency: 13.00 SEER
 Fan System: FAN SYSTEM 3 - Compliance (Motor nameplate HP method) - Passes
 Fans:
 FAN 3 Supply, Constant Volume, 1600 CFM, 0.1 motor nameplate hp
 1 Water Heater 1
 Gas Storage Water Heater, Capacity: 100 gallons, Input Rating: 199 kBtu/h w/ Circulation Pump
 Proposed Efficiency: 92.0 % (E), Required Efficiency: 80.00 % (E)

Mechanical Compliance Statement
 Compliance Statement: The proposed mechanical design represented in this document is consistent with the building plans, specifications, and other calculations submitted with this permit application. The proposed mechanical systems have been designed to meet the 90.1 (2010) Standard requirements in COMcheck Version 4.1.5.5 and to comply with any applicable mandatory requirements listed in the Inspection Checklist.

Name - Title _____ Signature _____ Date _____

Project Title: Kitchen Social Montgomery Report date: 02/20/23
 Data Filename: Z:\Proposals\TM\OBERSCHLAEGER\Kitchen Social Cincinnati\Current\EXIS CNC COMCHECK.ck Page 2 of 11

Section # & Req. ID	Plumbing Rough-In Inspection	Plans Verified	Field Verified	Complies?	Comments/Assumptions
7.4.1.1 (PL21)	Temperature controls installed on service water heating systems (<= 200F to maximum temperature for intended use).	<input type="checkbox"/> Complies <input type="checkbox"/> Does Not <input type="checkbox"/> Not Observable <input type="checkbox"/> Not Applicable		<input type="checkbox"/> Complies <input type="checkbox"/> Does Not <input type="checkbox"/> Not Observable <input type="checkbox"/> Not Applicable	Requirement will be met. Location on plans/spec: P2.1
7.4.1.2 (PL31)	Automatic fire detection installed to automatically switch off the recirculating hot water system or heat track.	<input type="checkbox"/> Complies <input type="checkbox"/> Does Not <input type="checkbox"/> Not Observable <input type="checkbox"/> Not Applicable		<input type="checkbox"/> Complies <input type="checkbox"/> Does Not <input type="checkbox"/> Not Observable <input type="checkbox"/> Not Applicable	Requirement will be met. Location on plans/spec: P2.1

Additional Comments/Assumptions:

1 High Impact (Tier 1) 2 Medium Impact (Tier 2) 3 Low Impact (Tier 3)

Project Title: Kitchen Social Montgomery Report date: 02/20/23
 Data Filename: Z:\Proposals\TM\OBERSCHLAEGER\Kitchen Social Cincinnati\Current\EXIS CNC COMCHECK.ck Page 4 of 11

Section # & Req. ID	Mechanical Rough-In Inspection	Plans Verified	Field Verified	Complies?	Comments/Assumptions
6.5.7.1.2 (ME40)	Conditioned supply air to space with a kitchen hood shall not exceed the greater of all supply flow required to meet space heating or cooling, or 81 hood exhaust flow minus the available air transfer from available spaces.	<input type="checkbox"/> Complies <input type="checkbox"/> Does Not <input type="checkbox"/> Not Observable <input type="checkbox"/> Not Applicable		<input type="checkbox"/> Complies <input type="checkbox"/> Does Not <input type="checkbox"/> Not Observable <input type="checkbox"/> Not Applicable	Requirement will be met. Location on plans/spec: H2.0
6.5.7.1.5 (ME50)	Approved field test used to evaluate design air flow rates and demonstrate proper capture and containment of kitchen exhaust systems.	<input type="checkbox"/> Complies <input type="checkbox"/> Does Not <input type="checkbox"/> Not Observable <input type="checkbox"/> Not Applicable		<input type="checkbox"/> Complies <input type="checkbox"/> Does Not <input type="checkbox"/> Not Observable <input type="checkbox"/> Not Applicable	Requirement will be met. Location on plans/spec: H2.0
6.5.7.2 (ME31)	Fume hoods exhaust systems >= 15,000 cfm have VAV hood exhaust and supply systems direct make-up air or heat recovery.	<input type="checkbox"/> Complies <input type="checkbox"/> Does Not <input type="checkbox"/> Not Observable <input type="checkbox"/> Not Applicable		<input type="checkbox"/> Complies <input type="checkbox"/> Does Not <input type="checkbox"/> Not Observable <input type="checkbox"/> Not Applicable	Exception: Requirement does not apply.
6.5.8.1 (ME45)	Unenclosed spaces that are heated use only radiant heat.	<input type="checkbox"/> Complies <input type="checkbox"/> Does Not <input type="checkbox"/> Not Observable <input type="checkbox"/> Not Applicable		<input type="checkbox"/> Complies <input type="checkbox"/> Does Not <input type="checkbox"/> Not Observable <input type="checkbox"/> Not Applicable	Exception: Requirement does not apply.
6.5.9 (ME31)	Hot gas bypass limited to <= 240 kBtu/h - 50% > 240 kBtu/h - 25%	<input type="checkbox"/> Complies <input type="checkbox"/> Does Not <input type="checkbox"/> Not Observable <input type="checkbox"/> Not Applicable		<input type="checkbox"/> Complies <input type="checkbox"/> Does Not <input type="checkbox"/> Not Observable <input type="checkbox"/> Not Applicable	Requirement will be met. Location on plans/spec: H2.0 H2.1
7.4.2 (ME36)	Service water heating equipment meets efficiency requirements.	<input type="checkbox"/> Complies <input type="checkbox"/> Does Not <input type="checkbox"/> Not Observable <input type="checkbox"/> Not Applicable		<input type="checkbox"/> Complies <input type="checkbox"/> Does Not <input type="checkbox"/> Not Observable <input type="checkbox"/> Not Applicable	Requirement will be met.

Additional Comments/Assumptions:

1 High Impact (Tier 1) 2 Medium Impact (Tier 2) 3 Low Impact (Tier 3)

Project Title: Kitchen Social Montgomery Report date: 02/20/23
 Data Filename: Z:\Proposals\TM\OBERSCHLAEGER\Kitchen Social Cincinnati\Current\EXIS CNC COMCHECK.ck Page 7 of 11

COMcheck Software Version 4.1.5.5
Inspection Checklist
 Energy Code: 90.1 (2010) Standard

Requirements: 100.0% were addressed directly in the COMcheck software. Text in the "Comments/Assumptions" column is provided by the user in the COMcheck Requirements screen. For each requirement, the user certifies that a code requirement will be met and how that is documented, or that an exception is being claimed. Where compliance is removed in a separate table, a reference to that table is provided.

Section # & Req. ID	Plan Review	Complies?	Comments/Assumptions
4.2.2.6.4 (PR2)	Plans, specifications, and/or calculations provide all information with which compliance can be determined for the mechanical systems and equipment, and document where exceptions to the standard are claimed. Load calculations per acceptable engineering standards and handbooks.	<input type="checkbox"/> Complies <input type="checkbox"/> Does Not <input type="checkbox"/> Not Observable <input type="checkbox"/> Not Applicable	Requirement will be met. Location on plans/spec: H2.0
4.2.2.7.7 (PR3)	Plans, specifications, and/or calculations provide all information with which compliance can be determined for the service water heating systems and equipment and document where exceptions to the standard are claimed. Hot water systems used per manufacturer's sizing guide.	<input type="checkbox"/> Complies <input type="checkbox"/> Does Not <input type="checkbox"/> Not Observable <input type="checkbox"/> Not Applicable	Requirement will be met. Location on plans/spec: P2.1
4.2.2.8.4 (PR2)	Plans, specifications, and/or calculations provide all information with which compliance can be determined for the electrical systems and equipment and document where exceptions are claimed. Feeder conductors and branch circuits used for maximum drop of 3%.	<input type="checkbox"/> Complies <input type="checkbox"/> Does Not <input type="checkbox"/> Not Observable <input type="checkbox"/> Not Applicable	Requirement will be met.
6.7.2.4 (PR3)	Detailed instructions for HVAC systems commissioning included on the plans or specifications for projects >= \$6,000.00.	<input type="checkbox"/> Complies <input type="checkbox"/> Does Not <input type="checkbox"/> Not Observable <input type="checkbox"/> Not Applicable	Exception: Requirement does not apply.

Additional Comments/Assumptions:

1 High Impact (Tier 1) 2 Medium Impact (Tier 2) 3 Low Impact (Tier 3)

Project Title: Kitchen Social Montgomery Report date: 02/20/23
 Data Filename: Z:\Proposals\TM\OBERSCHLAEGER\Kitchen Social Cincinnati\Current\EXIS CNC COMCHECK.ck Page 2 of 11

Section # & Req. ID	Mechanical Rough-In Inspection	Plans Verified	Field Verified	Complies?	Comments/Assumptions
6.4.1.4.6 (ME1)	HVAC equipment efficiency verified. Non-MEAC HVAC equipment labeled as meeting 90.1.	Efficiency: _____	Efficiency: _____	<input type="checkbox"/> Complies <input type="checkbox"/> Does Not <input type="checkbox"/> Not Observable <input type="checkbox"/> Not Applicable	See the Mechanical Systems list for values.
6.4.3.4.1 (ME3)	Stair and elevator shaft vents have motorized dampers that automatically close.	<input type="checkbox"/> Complies <input type="checkbox"/> Does Not <input type="checkbox"/> Not Observable <input type="checkbox"/> Not Applicable		<input type="checkbox"/> Complies <input type="checkbox"/> Does Not <input type="checkbox"/> Not Observable <input type="checkbox"/> Not Applicable	Exception: Requirement does not apply.
6.4.3.4.2 (ME4)	Outdoor air and exhaust systems have motorized dampers that automatically shut when not in use and meet maximum leakage rates. Check gravity dampers where allowed.	<input type="checkbox"/> Complies <input type="checkbox"/> Does Not <input type="checkbox"/> Not Observable <input type="checkbox"/> Not Applicable		<input type="checkbox"/> Complies <input type="checkbox"/> Does Not <input type="checkbox"/> Not Observable <input type="checkbox"/> Not Applicable	Requirement will be met. Location on plans/spec: H1.1
6.4.3.4.3 (ME3)	Enclosed parking garage ventilation has automatic containment detection and capacity to stage or modulate fans 10-20% of design capacity.	<input type="checkbox"/> Complies <input type="checkbox"/> Does Not <input type="checkbox"/> Not Observable <input type="checkbox"/> Not Applicable		<input type="checkbox"/> Complies <input type="checkbox"/> Does Not <input type="checkbox"/> Not Observable <input type="checkbox"/> Not Applicable	Exception: Requirement does not apply.
6.4.3.4.4 (ME3)	Ventilation fans >= 75 hp have automatic controls to shut off fan when not required.	<input type="checkbox"/> Complies <input type="checkbox"/> Does Not <input type="checkbox"/> Not Observable <input type="checkbox"/> Not Applicable		<input type="checkbox"/> Complies <input type="checkbox"/> Does Not <input type="checkbox"/> Not Observable <input type="checkbox"/> Not Applicable	Requirement will be met. Location on plans/spec: H1.0
6.4.3.9 (ME6)	Demand control ventilation provided for spaces > 200 ft ² and > 40 people/1000 ft ² occupant density and served by systems with air side economizer, auto modulating variable air damper control, or design airflow > 3,000 cfm.	<input type="checkbox"/> Complies <input type="checkbox"/> Does Not <input type="checkbox"/> Not Observable <input type="checkbox"/> Not Applicable		<input type="checkbox"/> Complies <input type="checkbox"/> Does Not <input type="checkbox"/> Not Observable <input type="checkbox"/> Not Applicable	Requirement will be met. Location on plans/spec: H2.0
6.4.3.10 (ME40)	Single zone HVAC systems with fan motors >= 3 hp have variable airflow controls. Air conditioning equipment with a cooling capacity >= 11,000 Btu/h has variable airflow controls.	<input type="checkbox"/> Complies <input type="checkbox"/> Does Not <input type="checkbox"/> Not Observable <input type="checkbox"/> Not Applicable		<input type="checkbox"/> Complies <input type="checkbox"/> Does Not <input type="checkbox"/> Not Observable <input type="checkbox"/> Not Applicable	Requirement will be met. Location on plans/spec: H2.0
6.4.3.10 (ME40)	Single zone HVAC systems with fan motors >= 3 hp have variable airflow controls. Air conditioning equipment with a cooling capacity >= 15,000 Btu/h has variable airflow controls.	<input type="checkbox"/> Complies <input type="checkbox"/> Does Not <input type="checkbox"/> Not Observable <input type="checkbox"/> Not Applicable		<input type="checkbox"/> Complies <input type="checkbox"/> Does Not <input type="checkbox"/> Not Observable <input type="checkbox"/> Not Applicable	Requirement will be met. Location on plans/spec: H2.0
6.4.4.1.1 (ME7)	Insulation exposed to weather protected from damage. Insulation outside of the conditioned space and associated with cooling systems is vapor retardant.	<input type="checkbox"/> Complies <input type="checkbox"/> Does Not <input type="checkbox"/> Not Observable <input type="checkbox"/> Not Applicable		<input type="checkbox"/> Complies <input type="checkbox"/> Does Not <input type="checkbox"/> Not Observable <input type="checkbox"/> Not Applicable	Requirement will be met. Location on plans/spec: H1.1
6.4.4.1.2 (ME8)	HVAC ducts and plenums insulated. Where ducts or plenums are installed in or under a slab, verification may need to occur during Foundation inspection.	R: _____ R: _____		<input type="checkbox"/> Complies <input type="checkbox"/> Does Not <input type="checkbox"/> Not Observable <input type="checkbox"/> Not Applicable	Requirement will be met. Location on plans/spec: H1.0

Additional Comments/Assumptions:

1 High Impact (Tier 1) 2 Medium Impact (Tier 2) 3 Low Impact (Tier 3)

Project Title: Kitchen Social Montgomery Report date: 02/20/23
 Data Filename: Z:\Proposals\TM\OBERSCHLAEGER\Kitchen Social Cincinnati\Current\EXIS CNC COMCHECK.ck Page 5 of 11

Section # & Req. ID	Rough-In Electrical Inspection	Complies?	Comments/Assumptions
8.4.2 (EL10)	At least 50% of all 125 volt 15- and 20-amp receptacles provided by an automatic control device.	<input type="checkbox"/> Complies <input type="checkbox"/> Does Not <input type="checkbox"/> Not Observable <input type="checkbox"/> Not Applicable	Exception: Requirement does not apply.
10.4.1 (EL9)	Electric motors meet requirements where applicable.	<input type="checkbox"/> Complies <input type="checkbox"/> Does Not <input type="checkbox"/> Not Observable <input type="checkbox"/> Not Applicable	Requirement will be met. Location on plans/spec: H2.0

Additional Comments/Assumptions:

1 High Impact (Tier 1) 2 Medium Impact (Tier 2) 3 Low Impact (Tier 3)

Project Title: Kitchen Social Montgomery Report date: 02/20/23
 Data Filename: Z:\Proposals\TM\OBERSCHLAEGER\Kitchen Social Cincinnati\Current\EXIS CNC COMCHECK.ck Page 8 of 11

Section # & Req. ID	Footing / Foundation Inspection	Complies?	Comments/Assumptions
6.4.3.8 (FO9)	Freeze protection and snow/ice melting system sensors for future connection to controls.	<input type="checkbox"/> Complies <input type="checkbox"/> Does Not <input type="checkbox"/> Not Observable <input type="checkbox"/> Not Applicable	Requirement will be met. Location on plans/spec: H2.0

Additional Comments/Assumptions:

1 High Impact (Tier 1) 2 Medium Impact (Tier 2) 3 Low Impact (Tier 3)

Project Title: Kitchen Social Montgomery Report date: 02/20/23
 Data Filename: Z:\Proposals\TM\OBERSCHLAEGER\Kitchen Social Cincinnati\Current\EXIS CNC COMCHECK.ck Page 3 of 11

Section # & Req. ID	Mechanical Rough-In Inspection	Plans Verified	Field Verified	Complies?	Comments/Assumptions
6.4.4.1.3 (ME9)	HVAC piping insulation thickness. Where piping is installed in or under a slab, verification may need to occur during Foundation inspection.	in. _____	in. _____	<input type="checkbox"/> Complies <input type="checkbox"/> Does Not <input type="checkbox"/> Not Observable <input type="checkbox"/> Not Applicable	Exception: n/a.
6.4.4.1.4 (ME4)	Thermally ineffective panel surfaces of service heating panels have insulation >= R-3.5.	<input type="checkbox"/> Complies <input type="checkbox"/> Does Not <input type="checkbox"/> Not Observable <input type="checkbox"/> Not Applicable		<input type="checkbox"/> Complies <input type="checkbox"/> Does Not <input type="checkbox"/> Not Observable <input type="checkbox"/> Not Applicable	Exception: Requirement does not apply.
6.4.4.2.1 (ME10)	Ducts and plenums sealed based on static pressure and location.	<input type="checkbox"/> Complies <input type="checkbox"/> Does Not <input type="checkbox"/> Not Observable <input type="checkbox"/> Not Applicable		<input type="checkbox"/> Complies <input type="checkbox"/> Does Not <input type="checkbox"/> Not Observable <input type="checkbox"/> Not Applicable	Requirement will be met. Location on plans/spec: H1.1
6.4.4.2.2 (ME11)	Ductwork operating > 3 in. water column requires air leakage testing.	<input type="checkbox"/> Complies <input type="checkbox"/> Does Not <input type="checkbox"/> Not Observable <input type="checkbox"/> Not Applicable		<input type="checkbox"/> Complies <input type="checkbox"/> Does Not <input type="checkbox"/> Not Observable <input type="checkbox"/> Not Applicable	Requirement will be met. Location on plans/spec: H1.1
6.4.4.2.2 (ME11)	Ductwork operating > 3 in. water column requires air leakage testing.	<input type="checkbox"/> Complies <input type="checkbox"/> Does Not <input type="checkbox"/> Not Observable <input type="checkbox"/> Not Applicable		<input type="checkbox"/> Complies <input type="checkbox"/> Does Not <input type="checkbox"/> Not Observable <input type="checkbox"/> Not Applicable	Requirement will be met. Location on plans/spec: H2.0
6.5.2.3 (ME19)	Dehumidification controls provided to prevent reheating, receding, mixing of hot and cold airstreams or concurrent heating and cooling of the same airstream.	<input type="checkbox"/> Complies <input type="checkbox"/> Does Not <input type="checkbox"/> Not Observable <input type="checkbox"/> Not Applicable		<input type="checkbox"/> Complies <input type="checkbox"/> Does Not <input type="checkbox"/> Not Observable <input type="checkbox"/> Not Applicable	Requirement will be met. Location on plans/spec: H2.0
6.5.3.3 (ME42)	Multiple zone VAV systems with DDC of individual zone boxes have static pressure setpoint reset controls.	<input type="checkbox"/> Complies <input type="checkbox"/> Does Not <input type="checkbox"/> Not Observable <input type="checkbox"/> Not Applicable		<input type="checkbox"/> Complies <input type="checkbox"/> Does Not <input type="checkbox"/> Not Observable <input type="checkbox"/> Not Applicable	Exception: Requirement does not apply. See the Mechanical Systems list for values.
6.5.3.3 (ME42)	Multiple zone VAV systems with DDC of individual zone boxes have static pressure setpoint reset controls.	<input type="checkbox"/> Complies <input type="checkbox"/> Does Not <input type="checkbox"/> Not Observable <input type="checkbox"/> Not Applicable		<input type="checkbox"/> Complies <input type="checkbox"/> Does Not <input type="checkbox"/> Not Observable <input type="checkbox"/> Not Applicable	Exception: Requirement does not apply. See the Mechanical Systems list for values.
6.5.4.1 (ME25)	HVAC pumping systems > 10 hp designed for variable fluid flow.	<input type="checkbox"/> Complies <input type="checkbox"/> Does Not <input type="checkbox"/> Not Observable <input type="checkbox"/> Not Applicable		<input type="checkbox"/> Complies <input type="checkbox"/> Does Not <input type="checkbox"/> Not Observable <input type="checkbox"/> Not Applicable	Exception: Minimum flow is less than required for proper operation and pump power >= 75 hp.
6.5.6.1 (ME46)	Exhaust air energy recovery on systems meeting Table 6.5.6.1.	<input type="checkbox"/> Complies <input type="checkbox"/> Does Not <input type="checkbox"/> Not Observable <input type="checkbox"/> Not Applicable		<input type="checkbox"/> Complies <input type="checkbox"/> Does Not <input type="checkbox"/> Not Observable <input type="checkbox"/> Not Applicable	Exception: Commercial kitchen hoods.
6.5.7.1.1 (ME32)	Kitchen hoods > 5,000 cfm have make up air >= 50% of exhaust air volume.	<input type="checkbox"/> Complies <input type="checkbox"/> Does Not <input type="checkbox"/> Not Observable <input type="checkbox"/> Not Applicable		<input type="checkbox"/> Complies <input type="checkbox"/> Does Not <input type="checkbox"/> Not Observable <input type="checkbox"/> Not Applicable	Requirement will be met. Location on plans/spec: H1.0
6.5.7.1.1 (ME32)	Kitchen hoods > 5,000 cfm have make up air >= 50% of exhaust air volume.	<input type="checkbox"/> Complies <input type="checkbox"/> Does Not <input type="checkbox"/> Not Observable <input type="checkbox"/> Not Applicable		<input type="checkbox"/> Complies <input type="checkbox"/> Does Not <input type="checkbox"/> Not Observable <input type="checkbox"/> Not Applicable	Requirement will be met. Location on plans/spec: H1.0
6.5.7.1.2 (ME45)	Conditioned supply air to space with a kitchen hood shall not exceed the greater of all supply flow required to meet space heating or cooling, or 81 hood exhaust flow minus the available air transfer from available spaces.	<input type="checkbox"/> Complies <input type="checkbox"/> Does Not <input type="checkbox"/> Not Observable <input type="checkbox"/> Not Applicable		<input type="checkbox"/> Complies <input type="checkbox"/> Does Not <input type="checkbox"/> Not Observable <input type="checkbox"/> Not Applicable	Requirement will be met. Location on plans/spec: H1.0

Additional Comments/Assumptions:

1 High Impact (Tier 1) 2 Medium Impact (Tier 2) 3 Low Impact (Tier 3)

Project Title: Kitchen Social Montgomery Report date: 02/20/23
 Data Filename: Z:\Proposals\TM\OBERSCHLAEGER\Kitchen Social Cincinnati\Current\EXIS CNC COMCHECK.ck Page 6 of 11

Section # & Req. ID	Final Inspection	Complies?	Comments/Assumptions
6.4.3.1.2 (F13)	Thermostatic controls have a 5 °F deadband.	<input type="checkbox"/> Complies <input type="checkbox"/> Does Not <input type="checkbox"/> Not Observable <input type="checkbox"/> Not Applicable	Requirement will be met. Location on plans/spec: H2.0
6.4.3.2 (F120)	Temperature controls have setpoint overlap restrictions.	<input type="checkbox"/> Complies <input type="checkbox"/> Does Not <input type="checkbox"/> Not Observable <input type="checkbox"/> Not Applicable	Requirement will be met. Location on plans/spec: H2.0
6.4.3.1.1 (F121)	HVAC systems equipped with at least one automatic shutdown control.	<input type="checkbox"/> Complies <input type="checkbox"/> Does Not <input type="checkbox"/> Not Observable <input type="checkbox"/> Not Applicable	Requirement will be met. Location on plans/spec: H1.0
6.4.3.3.2 (F122)	Setback controls allow automatic reset and temporary operation as required for maintenance.	<input type="checkbox"/> Complies <input type="checkbox"/> Does Not <input type="checkbox"/> Not Observable <input type="checkbox"/> Not Applicable	Requirement will be met. Location on plans/spec: H2.0
6.4.3.3 (F13)	Heat pump controls prevent supplemental electric resistance heat from coming on when not needed.	<input type="checkbox"/> Complies <input type="checkbox"/> Does Not <input type="checkbox"/> Not Observable <input type="checkbox"/> Not Applicable	Requirement will be met. Location on plans/spec: H2.0
6.4.3.7 (F16)	When humidification and dehumidification are provided to a zone, simultaneous operation is prohibited.	<input type="checkbox"/> Complies <input type="checkbox"/> Does Not <input type="checkbox"/> Not Observable <input type="checkbox"/> Not Applicable	Requirement will be met. Location on plans/spec: H1.0
6.7.2.1 (F17)	Furnished HVAC as-built drawings submitted within 90 days of system acceptance.	<input type="checkbox"/> Complies <input type="checkbox"/> Does Not <input type="checkbox"/> Not Observable <input type="checkbox"/> Not Applicable	Requirement will be met.
6.7.2.2 (F18)	Furnished O&M manuals for HVAC systems within 90 days of system acceptance.	<input type="checkbox"/> Complies <input type="checkbox"/> Does Not <input type="checkbox"/> Not Observable <input type="checkbox"/> Not Applicable	Requirement will be met.
6.7.2.3 (F19)	An air and/or hydronic system balancing report is provided for HVAC conditioned areas.	<input type="checkbox"/> Complies <input type="checkbox"/> Does Not <input type="checkbox"/> Not Observable <input type="checkbox"/> Not Applicable	Requirement will be met. Location on plans/spec: H1.1
6.7.2.4 (F110)	HVAC control systems have been tested to ensure proper operation, calibration and adjustment of controls.	<input type="checkbox"/> Complies <input type="checkbox"/> Does Not <input type="checkbox"/> Not Observable <input type="checkbox"/> Not Applicable	Requirement will be met. Location on plans/spec: H1.1
7.4.4.3 (F111)	Public lavatory faucet water temperature <= 110°F.	<input type="checkbox"/> Complies <input type="checkbox"/> Does Not <input type="checkbox"/> Not Observable <input type="checkbox"/> Not Applicable	Requirement will be met. Location on plans/spec: P2.0
7.4.4.4 (F112)	Controls are installed that limit the operation of a recirculation pump related to maintain temperature of a storage tank.	<input type="checkbox"/> Complies <input type="checkbox"/> Does Not <input type="checkbox"/> Not Observable <input type="checkbox"/> Not Applicable	Requirement will be met. Location on plans/spec: P2.1
10.4.3 (F124)	Elevators are designed with the proper lighting, ventilation power, and standby mode.	<input type="checkbox"/> Complies <input type="checkbox"/> Does Not <input type="checkbox"/> Not Observable <input type="checkbox"/> Not Applicable	Exception: Requirement does not apply.

Additional Comments/Assumptions:

1 High Impact (Tier 1) 2 Medium Impact (Tier 2) 3 Low Impact (Tier 3)

Project Title: Kitchen Social Montgomery Report date: 02/20/23
 Data Filename: Z:\Proposals\TM\OBERSCHLAEGER\Kitchen Social Cincinnati\Current\EXIS CNC COMCHECK.ck Page 9 of 11

KITCHEN SOCIAL

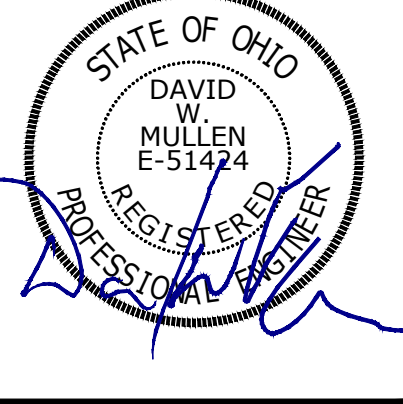
ARCHITECT/ENGINEER LOGO



ISSUE DATE: 03-10-23
 REVISION: 03-24-2023 - REVISION 1 BD COMMENTS

KITCHEN SOCIAL
 MONTGOMERY QUARTER BUILDING 1 FH
 9340 MONTGOMERY ROAD
 MONTGOMERY, OHIO 45242

SEAL/STAMP:



THE ARCHITECT ASSURES NO RESPONSIBILITY OR LIABILITY FOR THE USE OF THESE PLANS FOR ANY PROJECT OTHER THAN SPECIFICALLY AUTHORIZED BY THE ARCHITECT AND SHALL BE RESPONSIBLE FOR THE LOCATION IN THE STATE SHOWN ON THE SEAL. THIS SEALING IS ONLY VALID IF APPLICABLE IN ACCORD WITH THE STATED DESIGN CRITERIA.

5039-22-001

SHEET

MECHANICAL COMPLIANCE

H2.1