

NO.	DESCRIPTION	QTY	UNIT	REMARKS
0001	EXISTING FIXTURES			
0002	RELOCATED FIXTURES			
0003	NEW FIXTURES			
0004	R&S FIXTURES			

EXISTING PLAN

COLOR KEY

- EXISTING FIXTURES
- RELOCATED FIXTURES
- NEW FIXTURES
- R&S FIXTURES

PERMIT / BID ISSUE SET 12.13.21

DALLAS
(EXIST) BOUNTIFUL

751 FREELIST PARKWAY
COPPELL, TX

PHONE: (469) 645-7949
FAX: (469) 645-7946

GENERAL OFFICE
FACILITY ENGINEERING

10000 W. GRAND AVENUE, SUITE 1000
DALLAS, TX 75243

PH: (972) 796-4467
FAX: (972) 796-4472

EXISTING
DAL-540
3305 N. DALLAS PARKWAY
PLANO, TX

Heights Venture
ARCHITECTURE & DESIGN

HOUSTON: 1111 NORTH LINDEN STREET, SUITE 800
DALLAS: 5741 LAYTON DRIVE, SUITE 200
HOUSTON, TEXAS 77058
PLANO, TEXAS 75024
713.883.1103 V
972.460.7262 V

KROGER FOOD STORE # 540
MINOR W.I.W & ARTISAN DECOR REMODEL

3305 N. DALLAS PARKWAY
PLANO, TX 75093

Project Number: 21234-001
Sheet Size: 34x44

Drawn By: LR / LC
Checked By: LL

Project Phase:

EXISTING FIXTURE PLAN

11.2

540
F1

CURRENT PLAN DATE: 10/4/2021
ORIGINAL PLAN DATE: 10/12/2021

DRAWN: S. HULL
CHECKED:

REVISIONS:

STANDARD PLOTTED SCALE: 3/32"=1'-0"

BUILDING STATISTICS

TOTAL BUILDING	2,770 LF
SALES AREA	48,224 SF
BASE STORE	63,908 SF
MEZZANINE	5,334 SF
DOCK / UTILITY	3,299 SF

GROSS BUILDING: 72,441 SF

AS-BUILT FIXTURE PLAN

STEEL PACKAGE: Not Applicable

DAL-540

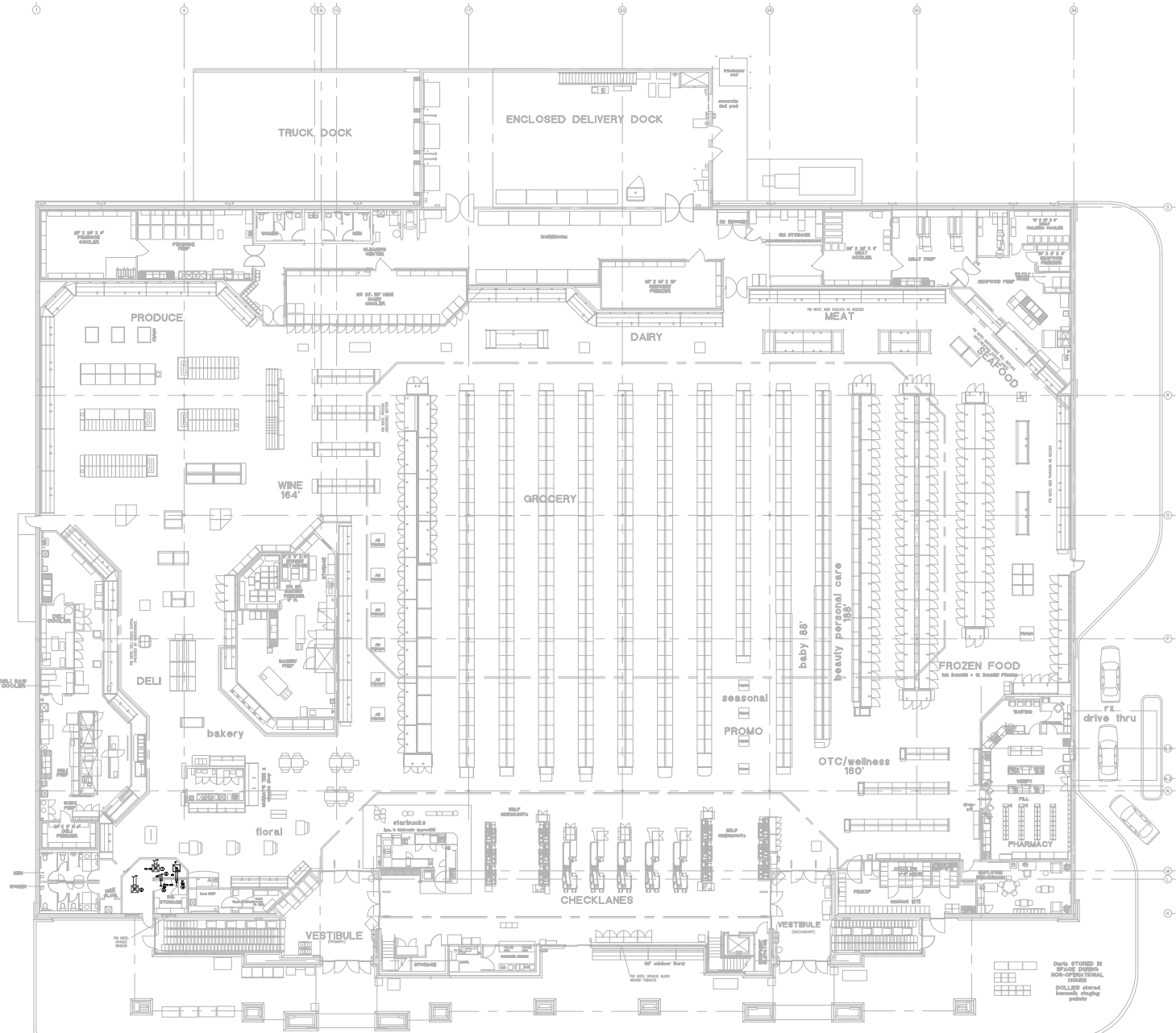
XF1

DATE PLOTTED: 11.1 & 11.2 - FIXTURE PLANS

GRILLE SCHEDULE							
MARK	SERVICE	QUANTITY	TYPE	DAMPER	CONSTRUCTION MATERIAL	FINISH COLOR	REMARKS
A	SUPPLY AIR	1	GRILLE	-	ALUMINUM	03	TRUS DOOR
B	RETURN AIR	1	GRILLE	-	ALUMINUM	03	TRUS DOOR
C	RETURN AIR	1	GRILLE	-	ALUMINUM	03	TRUS DOOR

GENERAL NOTES: (A)

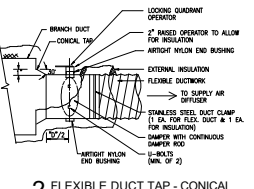
- DIFFUSER FINISHING STYLE SHALL BE CONFIRMED WITH ARCHITECTURAL DRAWING, REFLECTED CEILING PLAN
- COORDINATE DIFFUSER DISCHARGE PATTERN WITH DRAWINGS
- UNIT SIZES BASED ON 14" HX 14" SIZE CEILING
- PROVIDE SQUARE/RECTANGLE TO ROUND TRANSITIONS AS NEEDED
- COORDINATE ALL FINISHES WITH FINISHERS
- SUPPLY GRILLES ARE TO BE 4" WY DISCHARGE DIFFUSERS UNLESS SHOWN OTHERWISE ON DRAWINGS
- MANUFACTURER TO FURNISH AIR SCOPD OR EXTRACTOR WITH FULL RCD ACCESSORY; MECHANICAL CONTRACTOR TO INSTALL



SYMBOL LEGEND	
SYMBOL	DESCRIPTION (DISCHARGE STATUS NOT SHOWN ON PLANS)
GENERAL	
⊙	DIFFUSER
⊙	NOTE SPECIFIC TO DETAIL TAG
⊙	REVISION TAG
⊙	NEW EQUIPMENT
OUTDOOR	
⊙	SUPPLY AIR OUTDOOR
⊙	RETURN AIR AND OUTSIDE AIR OUTDOOR
⊙	EXHAUST AIR OUTDOOR
FLEXIBLE OUTDOOR	
⊙	SUPPLY AIR OUTDOOR THROUGH HORIZONTAL PARTITION
⊙	RETURN AIR AND OUTSIDE AIR OUTDOOR THROUGH HORIZONTAL PARTITION
⊙	EXHAUST AIR OUTDOOR THROUGH HORIZONTAL PARTITION
FIRE DAMPER (VERTICAL)	
⊙	FIRE DAMPER (HORIZONTAL)
⊙	SMoke DAMPER (VERTICAL)
⊙	SMoke DAMPER (HORIZONTAL)
⊙	COMBINATION FIRE & SMoke DAMPER (VERTICAL)
⊙	COMBINATION FIRE & SMoke DAMPER (HORIZONTAL)
⊙	SMoke ALARMING DAMPER (SEE DAMPER SCHEDULE)
⊙	RETURNDAMPED DAMPER (SEE DAMPER SCHEDULE)
NEW GRILLE	
⊙	SUPPLY AIR GRILLE WITH FOUR-WAY THROW
⊙	SUPPLY AIR GRILLE WITH THREE-WAY THROW
⊙	SUPPLY AIR GRILLE WITH TWO-WAY THROW
⊙	SUPPLY AIR GRILLE WITH ONE-WAY CORNER THROW
⊙	SUPPLY AIR GRILLE WITH ONE-WAY THROW
⊙	RETURN AIR GRILLE
⊙	RETURN AIR GRILLE WITH SOUND ROOF
⊙	CONNECT AIR GRILLE
⊙	SUPPLY AIR RECYCLING GRILLE
⊙	RETURN AIR RECYCLING GRILLE
⊙	RETURN AIR OUTSIDE AIR (SEE CEILING)

- GENERAL HVAC NOTES**
- THESE DRAWINGS ARE BASED ON GENERAL STORE FINISHING. CONTRACTOR TO FIELD VERIFY FINISHING CONDITIONS PRIOR TO BEGINNING WORK. IF ANY EQUIPMENT OR ROOFING IS DISCLOSED, IT IS THE HVAC CONTRACTOR'S RESPONSIBILITY TO COORDINATE WITH THE GENERAL CONTRACTOR FOR THE REPAIR OF ANY ROOFING ITEMS AFTER THE COMPLETION OF HVAC WORK.
 - ALL EQUIPMENT SHALL BE CONSIDERED EXISTING UNLESS OTHERWISE NOTED. EXISTING EQUIPMENT NOT SHOWN SHALL REMAIN UNCHANGED.
 - DAMAGED DIFFUSERS: IT IS THE CONTRACTOR'S RESPONSIBILITY TO IDENTIFY AND REPAIR ANY DAMAGED DIFFUSERS. SEE BIDDING LOGS AND TRACKER FOR QUANTITY OF DAMAGED DIFFUSERS TO BE REPLACED. CONTRACTORS COORDINATE WITH KROGER PROJECT MANAGER FOR REPLACEMENT OF DAMAGED DIFFUSERS.
 - EXISTING DIFFUSERS TO REMAIN: IT IS THE CONTRACTOR'S RESPONSIBILITY TO CLEAN ALL EXISTING DIFFUSERS AND RETURN GRILLES THAT ARE NOT REPLACED.
 - OUTDOOR AIR DIFFUSERS SHALL BE TAKEN DOWN AND PROPERLY DISPOSED OF.

- HVAC KEYED NOTES**
- RELOCATE EXISTING CEILING DIFFUSER AND REBALANCE AS SHOWN. RECONNECT TO EXISTING SUPPLY DUCT AS REQUIRED. VERIFY EXACT LOCATION OF DIFFUSER IN FIELD.
 - EXISTING DIFFUSER TO REMAIN.
 - NEW DIFFUSER AT THIS LOCATION. COORDINATE FINAL DIFFUSER LOCATION WITH KROGER PM.
 - CONNECT NEW 4" DUCT TO NEAREST EXISTING SUPPLY TRUNK DUCT.



2 FLEXIBLE DUCT TAP - CONICAL
SCALE = NONE

1 HVAC FLOOR PLAN
SCALE: 3/32" = 1'-0"



12/13/21
PERMIT / BID ISSUE SET



HEIGHTS VENTURE ARCHITECTURES & DESIGN

KROGER FOOD STORE # 540
MINOR W.I.W & ARTISAN DECOR REMODEL

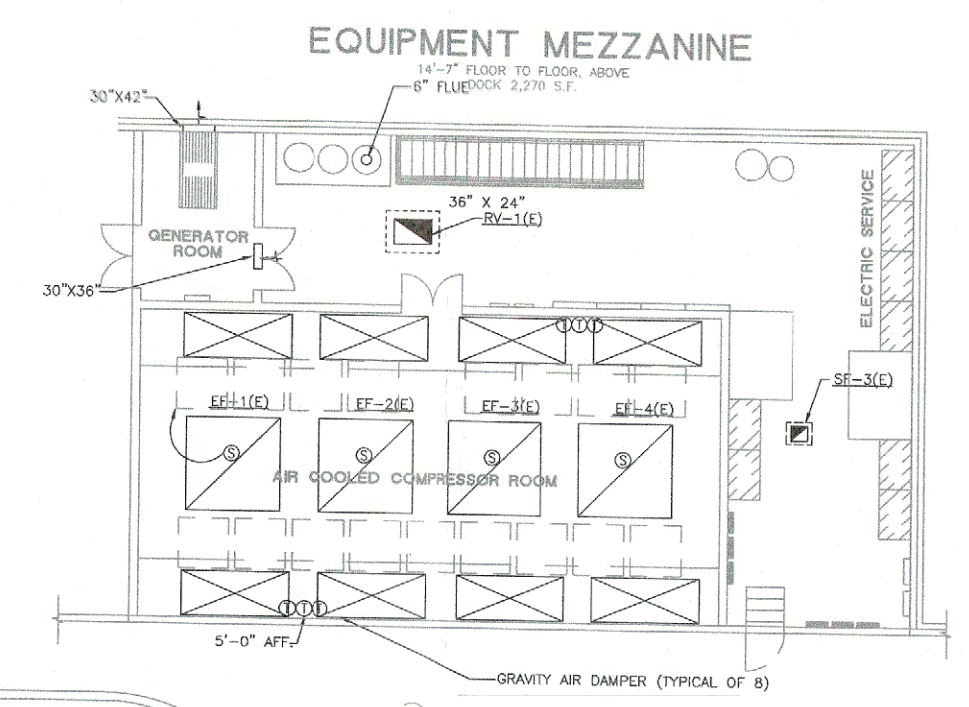
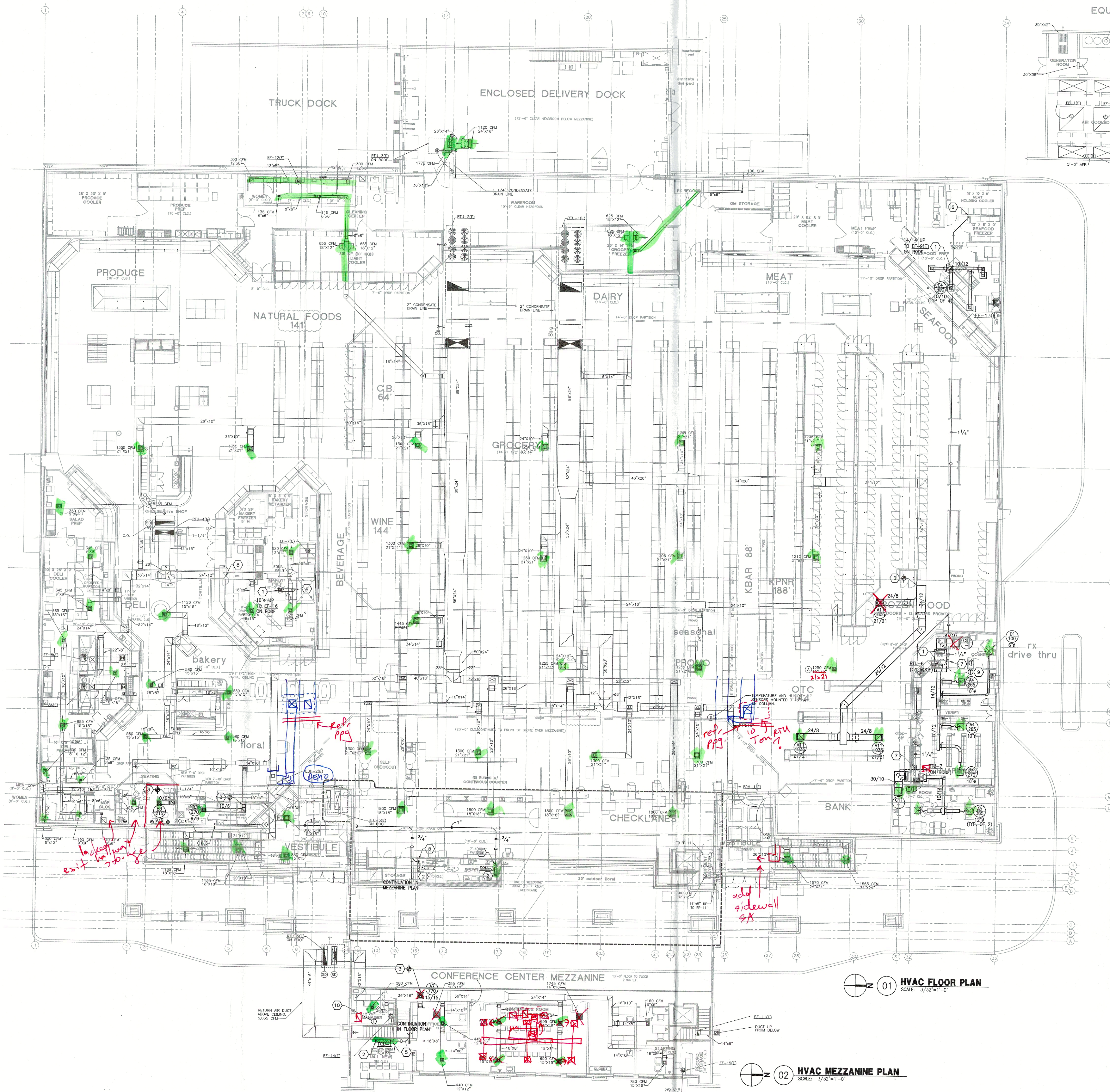
3305 N. DALLAS PARKWAY
PLANO, TX 75093

HVAC FLOOR PLAN

M1.1



KROGER
SW-540
 WITHIN THE WALLS
 REMODEL
 3305 N. DALLAS
 PARKWAY
 PLANO, TX 75023
 A DEVELOPMENT OF
 KROGER



GENERAL NOTES:

1. ALL LOW PRESSURE DUCTWORK SHALL BE GALVANIZED SHEET METAL, FABRICATED, INSTALLED AND SEAL LOW PRESSURE DUCTWORK FOR 2" W.G. IN ACCORDANCE WITH SMACNA STANDARD.
2. ALL UNDESIGNED SUPPLY AND RETURN AIR DUCTWORK SHALL BE EXTERNALLY INSULATED WITH MINIMUM 1-1/2" THICK FOIL FACE INSULATION HAVING A MINIMUM INSTALLED R-VALUE OF 3.0.
3. DUCTLINER SHALL BE 1-INCH ACOUSTICAL DUCT LINING IN ACCORDANCE WITH SMACNA STANDARD. DUCT LINING SHALL BE OWENS-CORNING FIBERGLASS "AEROFLEX" NO. 200 OR EQUAL.

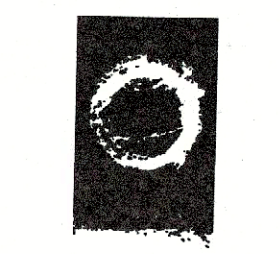
EXISTING LEAK DETECTION SYSTEM
 ALL EXISTING REFRIGERATION PIPING, COOLERS, FREEZERS AND MECHANICAL HOUSES ARE TO REMAIN AS CURRENTLY INSTALLED. NO NEW SYSTEMS ARE BEING INSTALLED UNDER THE SCOPE OF THIS PROJECT. EXISTING LEAK DETECTION SYSTEM FOR COMPRESSOR ROOM IS TO REMAIN FUNCTIONAL AS CURRENTLY INSTALLED. CONTRACTOR SHALL PROTECT EXISTING LEAK DETECTION SYSTEM DURING CONSTRUCTION.

MECHANICAL KEYED NOTES:

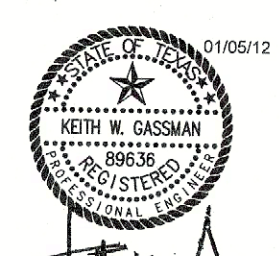
1. DUCT UP THRU ROOF. PROVIDE TRANSITION TO UNIT/FAN FULL SIZE IN DUCT RISER.
2. DUCTLESS SHUT SYSTEM FAN COIL UNIT. ROUTE REFRIGERANT PIPING CONDENSE WITHIN WALL AND ABOVE CEILING TO CONDENSING UNIT ON ROOF. COORDINATE EXACT LOCATION WITH KROGER PM PRIOR TO INSTALLATION.
3. CONNECT TO EXISTING DUCT MAIN AT THIS LOCATION. VERIFY AND PATCH EXISTING DUCTWORK AS REQUIRED FOR COMPLETE INSTALLATION.
4. EXHAUST VENT DUCT UP TO EXHAUST FAN ON ROOF. RE: DETAIL 102-7 ON SHEET NO. 1.
5. CONDENSATE DRAIN PIPING FULL SIZE UP FROM FAN COIL UNIT TO ABOVE CEILING.
6. TURN CONDENSATE DRAIN PIPING DOWN TO NON-RECYCLE WASTE RECEPTOR. RE: SHEET P1.1 FOR DRAIN LOCATIONS.
7. TURN RTU CONDENSATE DRAIN PIPING DOWN THRU ROOF TO CEILING SPACE BELOW.
8. 6" DOUBLE WALL TYPE "B" FLEX FOR TORILLIA MAKER. EXTEND AND CONNECT TO EXISTING FLUE ROOF PENETRATION.
9. TEMPERATURE SENSOR WITH SLIDE BAR ADJUST OVERRIDE TO PERMIT ADJUSTMENT FOR INSIDE PHARMACY.
10. RELIEF VALVE/THERMOSTAT/SENSOR FOR RTU-5(E) TO MANAGERS OFFICE AS SHOWN.

ISSUE LOG

NO	DESCRIPTION	DATE
1	ISSUED FOR RISC	11/09/11
2	CHANGES REVIEWED	11/21/11
3	ISSUED FOR PERMIT	11/21/11
4	ISSUED FOR CONSTRUCTION	01/05/12

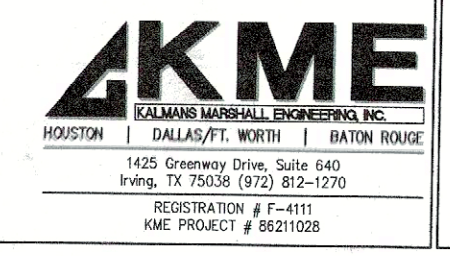


O'BRIEN
 5310 HARVEST HILL RD.
 SUITE 136
 DALLAS, TEXAS 75230
 972.788.1010
 www.obrienarch.com



DATE: 12/01/11
 JOB: 11003
 SCALE: AS NOTED

SHEET NO. **M1.1**



AKME
 KALAMITH MARSHALL ENGINEERS, INC.
 HOUSTON | DALLAS | WORTH | BATON ROUGE
 1425 Greenway Drive, Suite 400
 Irving, TX 75038 (972) 912-1270
 REGISTRATION # E-11111
 ME PROJECT # 8821028

540
 MECH

