

**SECTION 15732 - PACKAGED ROOFTOP AIR-CONDITIONING UNITS**

**PART 1 - GENERAL**

**1.1 SECTION REQUIREMENTS**

- A. Submittals: Product Data and Shop Drawings.
- B. Comply with ASHRAE 1.5.
- C. EER: Equal to or greater than prescribed by the energy code adopted by the Authority Having Jurisdiction.
- D. Warranties: Submit a written warranty, signed by the manufacturer, agreeing to the repair or replacement of components that fail within 5 years of substantial completion.

**PART 2 - PRODUCTS**

**2.1 PACKAGED UNITS, 5 TO 20 TONS**

- A. Factory assembled and tested, consisting of compressors, condensers, evaporator coils, condenser and evaporator fans, refrigeration and temperature controls, filters, and dampers.
  - 1. Refer to Rooftop Heating/Cooling Unit Schedules on drawing M000 for capacities, and manufacturers.
- B. Evaporator Fans: Belt or direct drive, forward curved centrifugal.
- C. Exhaust/Relief Fans: Direct drive, forward curved centrifugal or propeller.
- D. Condenser Fans: Direct drive propeller.
- E. Refrigerant Coils: Aluminum fins and copper coil.
- F. Compressors: Serviceable hermetic or fully hermetic, with safety controls, hot gas bypass, and timed off controls.
- G. Heat Exchangers: Gas fired, with gas controls, electronic ignition, high limit cutoff, and forced draft proving switch.
- H. Economizer controls: (Comparative Enthalpy, 100% capacity).
- I. Smoke Detectors: Photoelectric in supply and/or return as called for in schedule on sheet M600.
- J. Operating Controls: Two stage heating and two stage cooling on units 7-1/2 tons and over.
- K. Roof curb.
- L. Control Wiring from T-stat to rooftop unit: Shall be 18ga / 7 conductor, rated for plenum applications.
- M. Control Wiring from T-stat to remote sensor: Shall be a separate 18ga / 2 conductor shielded, rated for plenum applications.

**PART 3 - EXECUTION**

**3.1 INSTALLATION**

- A. Install units level and plumb and firmly anchored.
- B. Connect gas piping to burner with pipe same size as gas train inlet, and provide union with sufficient clearance for burner removal and service.
- C. Install ducts to termination in roof mounting frames. Terminate ducts through roof structure.
- D. Connect units to wiring systems and to ground.

**END OF SECTION 15732**

**SECTION 15850 - DUCTS AND ACCESSORIES**

**PART 1 - GENERAL**

**1.1 SECTION REQUIREMENTS**

- A. Submittals: Product Data for fire and smoke dampers.
- B. Comply with NFPA 90A for systems serving spaces more than 25,000 cu. ft. in volume or building Types II, IV, and V construction more than 3 stories in height.
- C. Comply with NFPA 90B for systems serving spaces in 1 or 2 Family dwellings or serving spaces less than 25,000 cu. ft.
- D. Comply with NFPA 96, "Ventilation Control and Fire Protection of Commercial Cooking Operations," for kitchen hood ducts.
- E. Comply with UL 181 and UL 181A for ducts and closures.
- F. Testing, Adjusting, and Balancing Agency Qualifications: AABC certified (to be furnished by Tenant).

**PART 2 - PRODUCTS**

**2.1 DUCTS**

- A. Spiral Duct: Spiral Lock Seam, without insulation, G90 galvanized finish, ASTM A-653/G92
  - 1. Basis of Design: Manufacturers: Lindeca SPH/Ducts, alternatives to the basis of design must be submitted for review.
  - 2. Fittings: Factory produced standing seam construction with internal sealing. Fitting with a major axis of 36" or smaller shall be 20 gauge. Fitting with a major axis of 37"-48" shall be 18 gauge.
- B. Galvanized Steel Sheet: Forming steel, ASTM A 653/G653M, G90 coating designation.
- C. Duct Liner: ASTM C 1191, Type 1, with an airstream surface coated with a temperature resistant coating. Thickness: 1/2 inch. Profile: S.
  - 1. Adhesive: ASTM C 916, Type 1.
  - 2. Mechanical Fasteners: Galvanized steel pin, length as required to penetrate liner plus 2 1/8 inch projection maximum into the airstream.
- D. Joint and Seam Tape: Comply with UL 181A.
- E. Joint and Seam Sealant: Comply with UL 181A.
- F. Rectangular Metal Duct Fabrication: Comply with SMAGNA's "HVAC Duct Construction Standard" for metal thickness, reinforcing types and intervals, tie rod applications, and joint types and intervals.

**2.2 ACCESSORIES**

- A. Volume Control Dampers: Factory fabricated volume control dampers, complete with required hardware and accessories. Single blade and multiple opposed blade, standard leakage rating, and suitable for horizontal or vertical applications.
- B. Fire Dampers: Factory fabricated fire dampers, complete with required hardware and accessories. UL labeled according to UL 555, "Fire Dampers".
- C. Flexible Connectors: Flame retardant or noncombustible fabrics, coatings, and adhesives complying with UL 181, Class 1.
- D. Flexible Ducts: Factory fabricated, insulated, round duct, with an outer jacket enclosing 2 inch thick, glass fiber insulation. (R-value: 6.0 around a continuous liner liner).

**PART 3 - EXECUTION**

**3.1 INSTALLATION**

- A. Duct System Pressure Class: Construct and install each duct system with 2 inch positive and negative duct pressure classifications.
- B. Conceal ducts from view in finished and occupied spaces. Except where noted as exposed.
- C. Avoid passing through electrical equipment spaces and enclosures.
- D. Support and connect metal ducts according to SMACNA's "HVAC Duct Construction Standard".
- E. Install duct accessories according to applicable portions of details of construction as shown in SMACNA standards.
- F. Install liner and/or insulation on ductwork per the material schedule on sheet M000.
- G. Install volume control dampers in lined duct with methods to avoid damage to liner and to avoid erosion of duct liner.
- H. Install fire and smoke dampers according to manufacturer's UL approved written instructions.
- I. Install flexible links in fire dampers.
- J. Provide saddle taps at tees for exposed ductwork.

**3.2 TESTING, ADJUSTING, AND BALANCING**

- A. The Tenant will supply an independent balance agent to to balance and adjust the HVAC installation. The balance agent will be responsible for any pulley or belt changes required.
- B. The GC is to have trained staffed available during the balancing to correct issues noted by the balance agent.
- C. The balance agent is to balance airflow within distribution systems, including submain, branches, and terminals to indicated quantities +/- 10%. The hood exhaust system shall be balanced to a tolerance of -0+10% and the make-up air system to a tolerance of -0+10%.
- D. The balance agent is to supply a copy of the balance report to the Tenant, engineer and general contractor for review.

**END OF SECTION 15850**

**SECTION 15885 - DIFFUSERS, REGISTERS, AND GRILLES**

**PART 1 - GENERAL**

**1.1 SECTION REQUIREMENTS**

- A. Submittals: None.

**PART 2 - PRODUCTS**

**2.1 OUTLETS AND INLETS**

- A. All air terminal devices:
  - 1. Refer to Grills, Registers, and Diffusers Schedule for equipment schedule
  - 2. Manufacturer: As scheduled (NO SUBSTITUTIONS)
  - 3. Material: As scheduled.
  - 4. Finish: As scheduled.
  - 5. Mounting: As scheduled.

**3.1 INSTALLATION**

- A. Coordinate location and installation with duct installation and installation of other ceiling and wall mounted items.
- B. Locate ceiling diffusers, registers, and grilles, as indicated on the architectural "reflected ceiling plans." Unless otherwise indicated, locate units in center of acoustical ceiling panels.

**END OF SECTION 15885**

**HVAC GENERAL NOTES**

- A. GENERAL NOTES APPLY TO HVAC SHEETS.
- B. WORK SHALL COMPLY WITH STATE AND LOCAL CODE REQUIREMENTS AS APPROVED AND AMENDED BY THE AUTHORITY HAVING JURISDICTION, INCLUDING APPLICABLE SECTIONS OF NFPA, THE MECHANICAL CODE, AND ANY INTERIM AMENDMENTS AT THE TIME OF THE PROPOSAL. PURCHASE PERMITS ASSOCIATED WITH THE WORK. OBTAIN INSPECTIONS REQUIRED BY CODE. SEE ARCHITECTURAL SHEETS FOR THE PREVAILING CODES.
- C. CONTRACTOR AND SUBCONTRACTORS SHALL REVIEW A COMPLETE SET OF THE CONSTRUCTION DOCUMENTS.
- D. COORDINATE WORK WITH THE WORK OF OTHER TRADES, EQUIPMENT FURNISHED BY OTHERS, REQUIREMENTS OF THE OWNER, AND OF THE EXISTING CONDITIONS AT THE PROJECT SITE.
- E. DRAWINGS FOR THE MECHANICAL WORK ARE DIAGRAMMATIC, SHOWING THE GENERAL LOCATION, TYPE, LAYOUT, AND EQUIPMENT REQUIRED. THE DRAWING SHALL NOT BE SEALED FOR EXACT MEASUREMENTS. REFER TO ARCHITECTURAL DRAWINGS FOR DIMENSIONS. REFER TO MANUFACTURER'S STANDARD INSTALLATION DRAWINGS FOR EQUIPMENT CONNECTIONS AND INSTALLATION REQUIREMENTS. PROVIDE DUCTWORK, CONNECTIONS, OFFSETS, ACCESSORIES, AND MATERIALS NECESSARY FOR A COMPLETE SYSTEM.
- F. DUCT DIMENSIONS ON PLANS INDICATE DIMENSIONS OF INTERNAL FREE AREA.
- G. PERFORATED CEILING DIFFUSERS SHALL BE 4-WAY UNLESS NOTED OTHERWISE.
- H. COORDINATE ROOF WORK WITH THE OWNER'S CONSTRUCTION MANAGER PRIOR TO CONSTRUCTION.
- I. UNLESS NOTED OTHERWISE RECTANGULAR DUCT ELBOWS GREATER THAN 45° SHALL BE MITERED ELBOWS WITH DOUBLE-THICKNESS TURNING VANES AND RECTANGULAR DUCT ELBOWS 45° OR LESS SHALL BE RADIUS ELBOWS WITH AN INSIDE RADIUS OF AT LEAST 1/2 THE WIDTH OF THE DUCT.
- J. REPLACE AIR FILTERS WITH NEW, CLEAN MERV 8 AIR FILTERS AT TURNOVER.
- K. THE TERM "FURNISH" MEANS SUPPLY AND DELIVER TO THE PROJECT SITE, READY FOR UNLOADING, UNPACKING, ASSEMBLY, INSTALLATION, AND SIMILAR OPERATIONS. THE TERM "INSTALL" DESCRIBES THE OPERATIONS AT THE PROJECT SITE INCLUDING THE ACTUAL UNLOADING, UNPACKING, ASSEMBLY, ERECTING, PLACING, ANCHORING, APPLYING, WORKING TO DIMENSION, FINISHING, CURING, PROTECTING, CLEANING, AND SIMILAR OPERATIONS. THE TERM "PROVIDE" MEANS TO FURNISH AND INSTALL COMPLETE AND READY FOR THE INTENDED USE.
- L. INSTALL LABELING CALLED FOR IN THE MECHANICAL DRAWINGS USING ENGRAVED PHENOLIC PLATES (WHITE WITH BLACK LETTERING).
- M. PROVIDE #3000 12 GA. UNISTRUT WITH PG FINISH FOR DUCT SUPPORTS AND OTHER UNISTRUT IN AREAS EXPOSED TO VIEW. SLOTTED UNISTRUT AND OTHER UNISTRUT WITH HOLES IS NOT ACCEPTABLE.

**HVAC MATERIAL SCHEDULE**

CATEGORY	APPLICATION	ALLOWABLE MATERIAL
DUCT	EXPOSED SUPPLY	RECT. LINED OR ROUND AS SHOWN, NO EXPOSED DUCT SEALING MASTIC
	EXPOSED RETURN	RECTANGULAR, NO EXPOSED DUCT SEALING MASTIC
	EXPOSED GEN. EXHAUST	RECTANGULAR OR ROUND AS SHOWN, NO EXPOSED DUCT SEALING MASTIC
	CONCEALED, SUPPLY	RECT. OR ROUND AS SHOWN, LINED OR INSULATED
DUCT	CONCEALED, RETURN	RECT. OR ROUND AS SHOWN, LINED OR INSULATED
	CONCEALED, GEN. EXHAUST	RECT. OR ROUND AS SHOWN
DUCT	CONCEALED, TYPE I HOOD EXHAUST	RECTANGULAR 16 GA. BLACK IRON W/ WRAP OR UL 1978 FACTORY-MANUFACTURED DUCT W/ WRAP (SUBMIT SHOP DRAWINGS FOR FACTORY-MANUFACTURED DUCT PRIOR TO ORDERING FOR APPROVAL)

**HVAC ABBREVIATIONS**

- A1F ABOVE FINISHED FLOOR
- AKG ABOVE FINISHED GRADE
- CD CEILING DIFFUSER
- CU CONDENSING UNIT
- ED EXHAUST
- EF EXHAUST FAN
- FR EXHAUST REGISTER
- DXTC EXHAUST
- HD HOOD
- MIM MAKEUP AIR UNIT
- OSD BLADE DAMPER
- RG RETURN GRILLE
- RTU ROOFTOP UNIT
- SR SUPPLY REGISTER
- YSC VARIABLE SPEED CONTROL
- COZAS TENANT'S CO2 ALARM SUPPLIER
- GC GENERAL CONTRACTOR
- HES TENANT'S HVAC EQUIPMENT SUPPLIER
- HS TENANT'S HOOD SUPPLIER
- YES TENANT'S KITCHEN EQUIPMENT SUPPLIER
- TAB TENANT'S TEST AND BALANCE VENDOR
- TCC TENANT'S CABLING CONTRACTOR
- TDC TENANT'S DUCT CLEANER
- TMS TENANT'S ENERGY MANAGEMENT SYSTEM SUPPLIER
- TLS TENANT'S LIGHT/LAMP SUPPLIER
- TMB TENANT'S MENU BOARD SUPPLIER
- TMS TENANT'S MILLWORK SUPPLIER
- TP TENANT'S PHONE SUPPLIER
- TYS TENANT'S PANELBOARD SUPPLIER
- TRS TENANT'S RAILING SUPPLIER
- TSC TENANT'S SIGN VENDOR
- TSV TENANT'S SV SANITIZER SUPPLIER
- WCS TENANT'S WALK-IN COOLER SUPPLIER
- WHS TENANT'S WATER HEATER SUPPLIER

**HVAC SYMBOLS**

- CEILING DIFFUSER
- CEILING MOUNTED RETURN OR EXHAUST REGISTER
- SUPPLY REGISTER
- RETURN GRILLE
- FLEXIBLE DUCT
- MITERED CORNER WITH TURNING VANES
- DUCTWORK INTERNAL FREE DIMENSIONS
- FWD (in HIGH)
- RECTANGULAR TO ROUND DUCT TRANSITION
- DUCT MOUNTED SMOKE DETECTOR
- MOTOR OPERATED DAMPER
- MANUAL VOLUME DAMPER
- GREASE DUCT CLEANOUT
- MITERED CORNER WITHOUT TURNING VANES
- GRIDPOINT THERMOSTAT
- GRIDPOINT ZONE SENSOR MODULE
- GRIDPOINT SUPPLY PROBE
- PLAN NOTE: SEE PLAN NOTES LISTED ON THE SAME SHEET FOR NOTE MEANING
- CONNECT TO EXISTING
- EQUIPMENT TAG: SEE EQUIPMENT SCHEDULE ON SHEET M000 FOR EQUIPMENT INFORMATION
- AUDIO/VISUAL REMOTE SMOKE DETECTOR ANNUNCIATION WITH RESETS OPERATED RESET
- GRILL, REGISTER, OR DIFFUSER TAG: TAG, NECK SIZE, AIR/LOW (CFM)

03/26/2024

**NATIONAL**  
E N G I N E E R I N G  
4818 Truman Blvd., Suite 200, Clearwater, FL 34616  
Phone: (813) 794-9117 Fax: (813) 794-1040  
Contact: Andy Janosik (641) 328-2028  
ajanosik@nationalengineering.com

FOR CONSTRUCTION

COPYRIGHT 2024  
THIS DRAWING IS AN INSTRUMENT OF SERVICE AND AS SUCH REMAINS THE PROPERTY OF CHAIPOTTLE MEXICAN GRILL, INC. NO REPRODUCTION OR USE OF THIS DOCUMENT IS LIMITED AND CAN BE EXCEPTED ONLY BY WRITTEN AGREEMENT WITH CHAIPOTTLE MEXICAN GRILL, INC.



STORE NO. - 4496  
NORTH NAPLES  
NWC IMMOKALEE RD & COLLIER BLVD.  
NAPLES, FL 34119

Issue Number	DATE	PERMIT SET
	11.26.2024	BID SET
	01.08.2025	CONSTRUCTION SET
Drawn:	Checked:	
AJJ	AJJ	
Project No:		
2301190		
Comments:		

**HVAC SPECIFICATIONS**

**M010**



GRILLS, REGISTERS, AND DIFFUSERS SCHEDULE										
TAG	DESCRIPTION	FACE SIZE	MATERIAL	FINISH	MOUNTING	FURNISHED BY	INSTALLED BY	BASIS FOR DESIGN		NOTES
								MANUFACTURER	MODEL	
CD1	PERFORATED CEILING DIFFUSER	24" X 24"	ALUMINUM	WHITE	LAY-IN CEILING	GC	GC	NAILOR	4320A TYPE L	PROVIDE INTEGRAL OBD
CD3	PERFORATED CEILING DIFFUSER	24" X 12"	ALUMINUM	WHITE	LAY-IN CEILING	GC	GC	NAILOR	4320A TYPE L	PROVIDE INTEGRAL OBD, REMOVE 4-WAY DEFLECTOR
ER1	PERFORATED CEILING EXHAUST	12" X 12"	ALUMINUM	WHITE	GYP CEILING	GC	GC	NAILOR	4330R TYPE S	PROVIDE INTEGRAL OBD
RG1	PERFORATED CEILING RETURN	48" X 24"	ALUMINUM	WHITE	LAY-IN CEILING	GC	GC	NAILOR	4330R TYPE L	
RG2	PERFORATED CEILING RETURN	48" X 24"	ALUMINUM	WHITE	GYP CEILING	GC	GC	NAILOR	4330R TYPE S	
SR1	ADJUSTABLE TURBO NOZZLE	SEE NECK SIZE	ALUMINUM	WHITE	WALL	GC	GC	AIR CONCEPTS	AMR-14	PROVIDE FACE-ACCESSIBLE OBD
SR2	DOUBLE DEFLECTION SUPPLY REGISTER	SEE NECK SIZE	ALUMINUM	WHITE	WALL	GC	GC	NAILOR	512H	PROVIDE INTEGRAL OBD

SANITIZING EQUIPMENT SCHEDULE										
TAG	COUNT	DESCRIPTION	FURNISH ED BY	INSTALL E D BY	BASIS FOR DESIGN			REMARKS		
					MANUFACTURER	MODEL	BRU ASSEMBLY			
SH-1	2	BATHROOM AIR PURIFICATION UNIT	TUV	GC	RGF ENVIRONMENTAL GROUP		BRU ASSEMBLY	SEE ELECTRICAL SHEETS FOR CONNECTION INFORMATION.		
SH-1	2	HVAC AIR PURIFICATION UNIT	TUV	GC	RGF ENVIRONMENTAL GROUP	REME-HALO		SEE DETAIL 6/M700 FOR INSTALLATION INFORMATION.		
SH-1	3	ICE MACHINE TREATMENT SYSTEM	TUV	GC	RGF ENVIRONMENTAL GROUP	IMS-B-GA		SEE PLUMBING DRAWINGS FOR INSTALLATION INFORMATION.		

VIROGUARD SCHEDULE										
TAG	QUANTITY	DESCRIPTION	DUCT CONNECTION SIZE	FAN	FURNISHED BY	INSTALLED BY	BASIS FOR DESIGN			
VG-1	1	HURRICANE RATED VIROGUARD HOOD EXHAUST FAN ROOFTOP CONTAINMENT SYSTEM	16" X 16"	CAPTIVE-AIRE DU180HA	TDC	GC	ENVIRONMENTAL			

FAN SCHEDULE											
TAG	DRIVE TYPE	EXHAUST FLOW [CFM]	E.S.P. [in. W.C.]	WEIGHT [lbs]	ELECTRICAL		FURNISHED BY	INSTALLED BY	BASIS FOR DESIGN		REMARKS
					MOTOR POWER	V/P/H			MANUFACTURER	MODEL	
EF-1	DIRECT	250 CFM	1.20 in-wg	400	2	208/3/60	HS	GC	CAPTIVE-AIRE	DU180HA	FURNISHED WITH DISCONNECT AND VENTED ROOF CURB
EF-2	DIRECT	150 CFM	0.60 in-wg	100	0.18 HP	120/1/60	HS	GC	CAPTIVE-AIRE	DR120HA	FURNISHED WITH DISCONNECT, VARIABLE SPEED CONTROLLER, BACKDRIFT DAMPER AND ROOF CURB

MAKEUP AIR UNIT SCHEDULE											
TAG	DESCRIPTION	AIRFLOW		APPROXIMATE WEIGHT [lbs]	ELECTRICAL		FURNISHED BY	INSTALLED BY	BASIS FOR DESIGN		REMARKS
		SUPPLY FLOW [CFM]	E.S.P. [in. W.C.]		MOTOR POWER	V/P/H			MANUFACTURER	MODEL	
MAU-1	Unpowered Makeup Air Unit	1300	0.80	350	1 HP	208/3/60	THIS	GC	Captive-Aire	AL-610	FURNISHED WITH TRUNKLINE EXTENSION, DISCONNECT, ROOF CURB, SCREEN INTAKE, AND WASHABLE ALUMINUM FILTERS.

CONDENSING UNIT SCHEDULE															
TAG	DESCRIPTION	NOMINAL CAPACITY [TONS]	NUMBER OF COMPRESSORS	NUMBER OF CIRCUITS	REFRIGERANT TYPE	REFRIGERANT CHARGE	WEIGHT	ELECTRICAL			FURNISHED BY	INSTALLED BY	BASIS FOR DESIGN		REMARKS
								MOCQ	FLA	V/P/H			MANUFACTURER	MODEL	
CU-1	WALK-IN COOLER REMOTE CONDENSING UNIT	--	1	1	R-404A		200	15 A	6.5 A	208/3/60	WCS	GC	HARFORD	PCL95MDP-3	FURNISHED WITH WALK-IN COOLER
CU-2	ICE MAKER - REMOTE CONDENSER	--	0	1	R-404A	11 lbs. 7.4 oz	100			120/1/60	YES	GC	-	-	FURNISHED WITH ICE MAKER
CU-3	ICE MAKER - REMOTE CONDENSER	--	0	1	R-404A	11 lbs. 7.4 oz	100			120/1/60	YES	GC	-	-	FURNISHED WITH ICE MAKER

KITCHEN HOOD SCHEDULE																												
TAG	DESCRIPTION	MAX COOKING TEMP.	EXHAUST PLENUM				PERFORATED SUPPLY PLENUMS						BASIS FOR DESIGN				REMARKS											
			AIRFLOW [CFM]	SP [in. W.C.]	DUCT COLLARS		SP [in. W.C.]	SUPPLY PLENUM LENGTH	SUPPLY PLENUM WIDTH	MAU PLENUM		AC PLENUM		NUMBER OF LIGHT FIXTURES	APPROXIMATE WEIGHT [lbs]	FURNISHED BY		INSTALLED BY	MANUFACTURER	MODEL								
					NO.	WIDTH				LENGTH	NO.	WIDTH	LENGTH								NO.	DIAMETER						
HD-1	TYPE I CANOPY HOOD WITH PERFORATED MAU AND AC SUPPLY PLENUMS	600°F	2550	0.97	1	10"	24"	12"	9"	4"	3"	0.1	1300	148	68	2	2	R-410A	25.6	1500	60 A	45.0 A	208/3/60	HES	GC	CARRIER	48FC_M12	MATL: 18 GA. TYPE 430 SS. PROVIDE WITH VERTICAL END PANELS, 16" TALL HES FILTERS, INTEGRAL UTILITY CABINET, KITCHEN EXHAUST SUPPRESSION SYSTEM, DUCT COLLAR TEMPERATURE SENSOR, PREWIRE PACKAGE, SPARE FIRE SYSTEM DRY CONTACT, AND 4-POLE 20A CONTACTOR

ROOFTOP UNIT SCHEDULE																											
TAG	DESCRIPTION	NOMINAL CAPACITY [TONS]	EER	AIRFLOW			NET COOLING CAPACITY				HEATING CAPACITY			# OF COMPRESSORS	# OF CIRCUITS	REFRIG. TYPE	REFRIG. CHARGE	APPROX. WEIGHT [lbs]	ELECTRICAL			FURNISHED BY	INSTALLED BY	BASIS FOR DESIGN		REMARKS	
				TOTAL [CFM]	OA [CFM]	ESP [in. W.C.]	TOTAL [MBH]	SENSIBLE [MBH]	EAT [DEG. F]	COND. EAT [DEG. F]	INPUT [MBH]	OUTPUT [MBH]	EAT [DEG. F]						MOCQ	FLA	V/P/H			MANUFACTURER	MODEL		
RTU-1	KITCHEN ROOFTOP UNIT	10	12	4000	500	0.8	78	69	122	73	99	180	148	68	2	2	R-410A	25.6	1500	60 A	45.0 A	208/3/60	HES	GC	CARRIER	48FC_M12	FURNISHED WITH HINGED ACCESS PANELS, STANDARD ECONOMIZER W/ DUAL ENTHALPY CONTROLS, BAROMETRIC RELIEF, SUP. SMOKE DETECTOR W/ REMOTE KEYED ANNUNCIATION/RESET, MERV-8 FILTERS, CURB, HAIL GUARD, DISCONNECT, & UNIT-MOUNTED NON-POWERED CONVENIENCE RECEPTACLE
RTU-2	DINING ROOM ROOFTOP UNIT	10	12	4000	1000	0.8	133	57	80	74	99	180	148	64	2	2	R-410A	25.6	1500	60 A	45.0 A	208/3/60	HES	GC	CARRIER	48FC_M12	FURNISHED WITH HINGED ACCESS PANELS, STANDARD ECONOMIZER W/ DUAL ENTHALPY CONTROLS, BAROMETRIC RELIEF, SUP. SMOKE DETECTOR W/ REMOTE KEYED ANNUNCIATION/RESET, MERV-8 FILTERS, CURB, HAIL GUARD, DISCONNECT, & UNIT-MOUNTED NON-POWERED CONVENIENCE RECEPTACLE

SPACE	AREA (OUTSIDE AIR)			PEOPLE (OUTSIDE AIR)			AREA (EXHAUST)			FIXTURE (EXHAUST)			MIN CFM (OUTSIDE AIR)		CFM DA PROVIDED		MIN CFM (EXHAUST)		CFM EXHAUST PROVIDED	
	AREA	CFM/SF	CFM	PEOPLE/ 1000 SF	PEOPLE	CFM/ PERSON	AREA	CFM/SF	CFM	FIXTURE	CFM/ FIXTURE	CFM	SUBTOTAL	EFFECT	MIN CFM	CFM	SUBTOTAL	EFFECT	MIN CFM	CFM
DINING RM	1,020	0.18	184	70	72	7.5	536	N/A	N/A	N/A	N/A	N/A	720	0.8	900	1000	N/A	N/A	N/A	N/A
KITCHEN	990	0.12	119	20	20	7.5	150	990	0.7	693	N/A	N/A	269	0.8	336	475	693	0.8	886	2925
OFFICE	38	0.06	3	5	1	5	5	N/A	N/A	N/A	N/A	N/A	8	0.8	10	25	N/A	N/A	N/A	N/A
RESTROOMS	N/A	N/A	N/A	N/A	N/A	N/A	N/A	N/A	N/A	2	50	100	N/A	N/A	N/A	N/A	100	0.8	125	150

- NOTES:  
1. VENTILATION RATE LISTED REGARDS EXHAUST AIR QUALITY.  
2. EXHAUST RATE IS BASED ON CONTINUOUS FAN OPERATION.  
3. VENTILATION RATES WERE DERIVED FROM TABLE 403.3.1.1 IN THE 2023 FMC.

AIR BALANCE SCHEDULE				
Tag	Supply Flow [CFM]	Return Flow [CFM]	Exhaust Flow [CFM]	Subtotal [CFM]
EF-1	0	0	2550	-2550
EF-2	0	0	150	-150
MAU-1	1300	0	0	1300
RTU-1	4000	3500	0	500
RTU-2	4000	3000	0	1000
Net Pressurization (CFM)				

- CONTROL FUNCTIONS**
- THE MAIN COOKING EXHAUST FAN AND MAKEUP AIR UNIT SHALL BE INTERLOCKED TO OPERATE TOGETHER. THIS CONTROL CIRCUIT IS ACTIVATED BY A SWITCH AND INCLUDES A FIRE PROTECTION OVERRIDE.
  - THE TEMPERATURE IN EACH ZONE IS CONTROLLED BY SPACE TEMPERATURE SENSORS CONNECTED TO THE THERMOSTATS LOCATED IN THE OFFICE. ALL ZONES SHALL OPERATE WITH CONTINUOUS FAN OPERATION DURING OCCUPIED TIMES AND INTERMITTENTLY AS NEEDED TO MAINTAIN SET POINTS DURING UNOCCUPIED TIMES. OUTSIDE AIR DAMPPERS SHALL BE OPEN CONTINUOUSLY WHEN EITHER IN OCCUPIED MODE OR WHEN THE HOOD SYSTEM IS ON AND SHALL BE CLOSED DURING UNOCCUPIED PERIODS.
  - THE THERMOSTATS SHALL DETERMINE OCCUPIED/UNOCCUPIED STATUS BASED ON THE SCHEDULE IN THE ENERGY MANAGEMENT SYSTEM.



FOR CONSTRUCTION

Copyright 2023. THE INFORMATION IS A INSTRUMENT OF SERVICE AND IS SHOWN HEREIN IS THE PROPERTY OF CHIPOTLE MEXICAN GRILL, INC. NO PARTS OR PORTIONS OF THIS DOCUMENT IS LIMITED AND CAN BE EXTENDED ONLY BY WRITTEN AGREEMENT WITH CHIPOTLE MEXICAN GRILL, INC.



STORE NO. - 4496  
NORTH NAPLES  
NWC IMMOKALEE RD & COLLIER BLVD.  
NAPLES, FL 34119

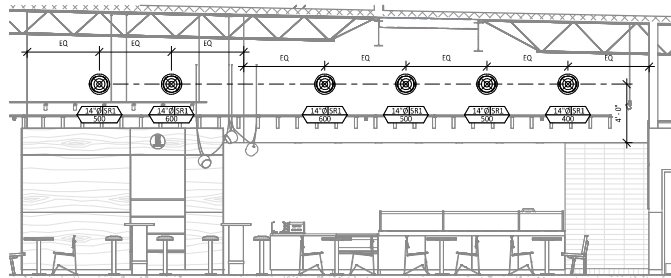
Issue Revised: 10.04.2024 PERMIT SET  
11.26.2024 BID SET  
01.08.2025 CONSTRUCTION SET

Revisions:  
1. 11.21.24 Code Comments

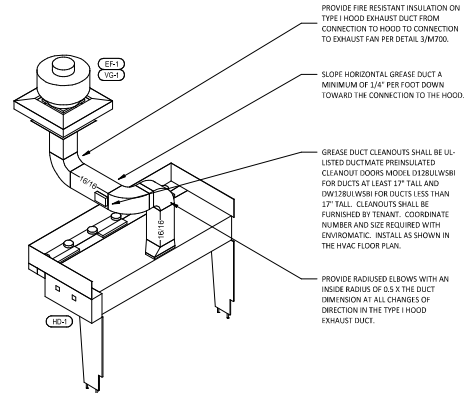
Drawn: AJJ  
Checked: AJJ  
Project No: 2301190  
Contract:

HVAC SCHEDULES

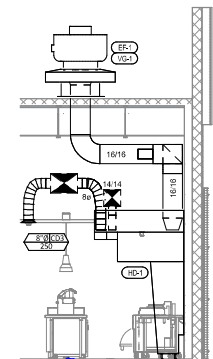
M600



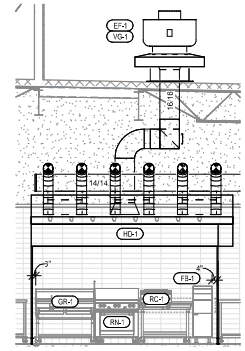
**HVAC DINING ROOM SECTION**  
1/4" = 1'-0"



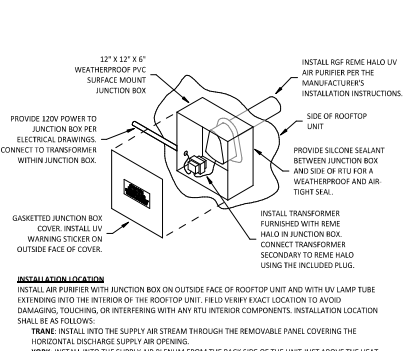
**HOOD EXHAUST ISOMETRIC**  
N.T.S.



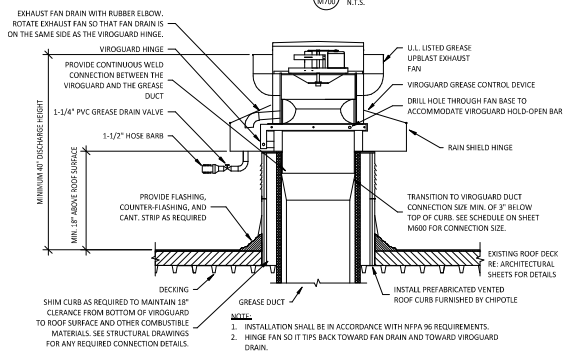
**DUCT SECTION AT HOOD**  
1/4" = 1'-0"



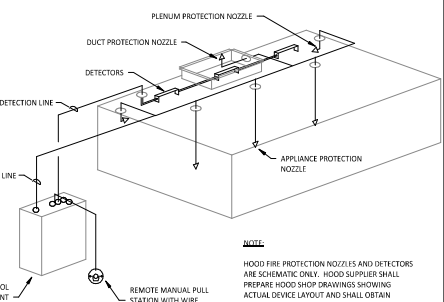
**HOOD ELEVATION**  
1/4" = 1'-0"



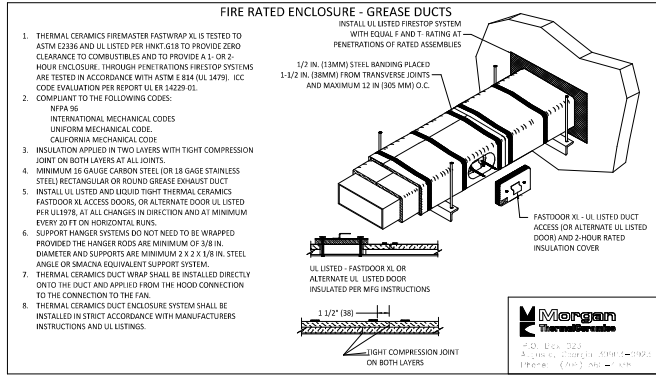
**UV AIR PURIFIER INSTALLATION**  
N.T.S.



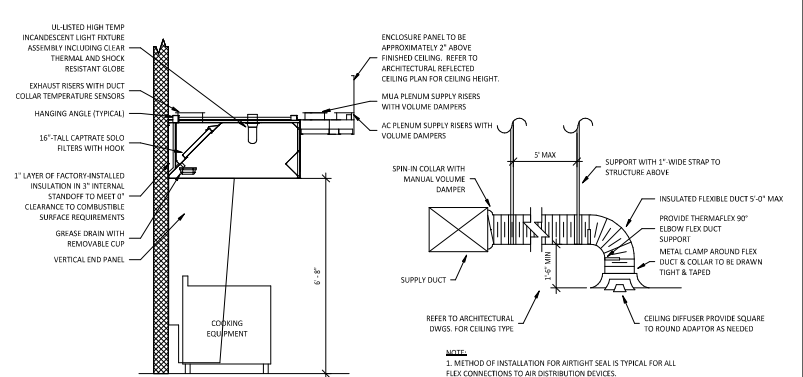
**GREASE EXHAUST FAN**  
N.T.S.



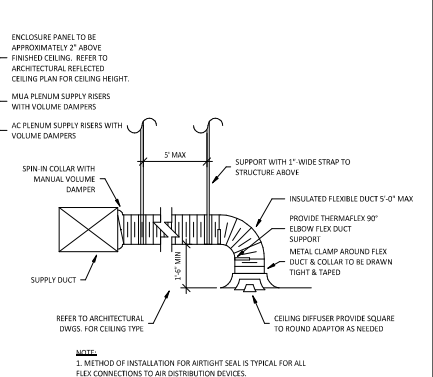
**FIRE SUPPRESSION SYSTEM SCHEMATIC**  
N.T.S.



**FIRE RATED ENCLOSURE - GREASE DUCTS**  
N.T.S.



**HOOD SECTION VIEW**  
N.T.S.



**DIFFUSER CONNECTION**  
N.T.S.



**FIREMASTER DUCT WRAP - UL HNK1-G18**  
N.T.S.



FOR CONSTRUCTION



STORE NO. - 4496  
NORTH NAPLES  
NWC IMMOKALEE RD & COLLIER  
BLVD.  
NAPLES, FL 34119

Issue/Revised	DATE	PREPARED BY
	10.04.2024	PM/MT/SET
	11.26.2024	BD/SET
	01.08.2025	CONSTRUCTION SET

Drawn: [ ] Checked: [ ]  
All: [ ] All: [ ]

Project No: 2301190

Contract:

HVAC DETAILS

M700

**SECTION 15065 - COMMON PIPING REQUIREMENTS**

- PART 1 - GENERAL**  
**A. SECTION REQUIREMENTS**  
 1. Comply with the requirements of the Building Code and the local authority having jurisdiction.  
**2.1 PRODUCTS**  
**A. Hangers and Pipe Attachments:** Factory fabricated with galvanized coatings; nonmetallic coated for hangers in direct contact with copper tubing.  
**B. Building Attachments:** Provide adjusted pipe, drive pin attachments with pullout and shear capacities appropriate for supported loads and building materials; UL listing and FM approval for fire protection systems.  
**C. Mechanical Anchor Fasteners:** Insert-type with pullout and shear capacities appropriate for supported loads and building materials; UL listing and FM approval for fire protection systems.  
**PART 3 - EXECUTION**  
**3.1 INSTALLATION**  
**A. Initial piping free of sags and bends.**  
**B. Initial fittings for changes in direction and branch connections.**  
**C. Initial sleeves for pipes passing through concrete and masonry walls, gypsum board/partitions, and concrete floor and roof slabs.**  
**D. Exterior Wall, Pipe Penetrations:** Mechanical sleeve shall installed in steel or cast iron pipes for wall sleeves.  
**E. Fire Barrier Penetrations:** Seal pipe penetrations with through-penetration firestop systems.  
**F. Initial unions adjacent to each valve and at final connection to each piece of equipment.**  
**G. Initial dielectric unions and flanges to connect piping materials of dissimilar metals in gas piping.**  
**H. Initial dielectric coupling and nipple fittings to connect piping materials of dissimilar metals in water piping.**  
**I. Provide full ring enclosures at plumbing penetrations through walls or ceilings. Tightly seal enclosures to the adjacent surface.**  
**3.2 HANGERS AND SUPPORTS**  
**A. Install building attachments within concrete or structural steel. Install additional attachments at concentrated loads, including valves, flanges, guides, strainers, expansion anchors, and at changes in direction of piping.**  
**B. Install powder actuated drive pin fasteners in concrete after concrete is cured. Do not use lightweight concrete or in slabs less than 4 inches thick.**  
**C. Install mechanical anchor fasteners in concrete after concrete is cured. Do not use in lightweight concrete or in slabs less than 4 inches thick.**  
**D. Support fire protection system piping independent of other piping.**  
**E. Load Distribution:** Install hangers and supports so piping live and dead loading and stresses from movement will not be transmitted to connected equipment.  
**END OF SECTION 15065**

**SECTION 15080 - MECHANICAL INSULATION**

- PART 1 - GENERAL**  
**1.1 SECTION REQUIREMENTS**  
**A. Submittals:** None.  
**B. Quality Assurance:** Labeled with maximum flame-spread rating of 25 and maximum smoke developed rating of 50 according to ASTM E 84.  
**PART 2 - PRODUCTS**  
**2.1 PIPE INSULATION**  
**A. Preformed Glass Fiber Pipe Insulation:** ASTM C 547, Class 1, with factory applied, all purpose, vapor retarder jacket.  
**B. Polyethylene Pipe Insulation:** Unisular polyethylene, preformed pipe insulation. Comply with ASTM C 534, Type I, except for density.  
**PART 3 - EXECUTION**  
**3.1 INSTALLATION**  
**A. Install vapor barriers on insulated pipes with surface operating temperatures below 60 deg.F.**  
**B. Insulate fittings, valves, and specialties.**  
**C. Seal vapor barrier penetrations for hangers, supports, anchors, and other projections.**  
**D. Coat gas piping fire pipe insulation ends with vapor barrier coating.**  
**E. Roof Penetrations:** Apply insulation on interior applications to a point even with the top of the roof flashing.  
**F. Exterior Wall Penetrations:** For penetrations of below grade exterior walls, terminate insulation flush with mechanical sleeve seal.  
**G. Interior Walls and Partitions Penetrations:** Apply insulation continuously through walls and partitions, except fire rated walls and partitions.  
**H. Fire Rated Walls and Partitions Penetrations:** Terminate insulation at penetrations through fire rated walls and partitions. Seal around penetration with through penetration firestop systems.  
**I. Floor Penetrations:** Terminate insulation at the underside of the floor assembly and at the floor support at top of floor. Seal around penetration with through penetration firestop systems.  
**J. Glass Fiber Insulation Installation:** Bond insulation to pipe with adhesive. Seal seams and joints with vapor barrier compound.  
**K. Interior Piping System Applications:** Insulate the following piping systems:  
 1. Domestic cold, hot, and recirculation water pipes.  
 2. Exposed sanitary drains and water supply pipes for public hand sinks.  
 3. Refrigerant piping.  
**L. Do not apply insulation to the following systems, materials, and equipment:**  
 1. Flexible connectors.  
 2. Fire protection piping systems.  
 3. Sanitary drainage and vent piping.  
 4. Chrome plated pipes and fittings, except for plumbing fixtures for the disabled.  
 5. Piping specialties, including air chambers, unions, strainers, check valves, plug valves, and flow regulators.  
**M. Pipe Insulation Thickness Application Schedule:** Insulate piping with the following materials and thicknesses:  
 1. Domestic Hot and Recirculation water pipes: 1-inch preformed glass fiber pipe insulation.  
 2. Domestic Cold Water: 1/2 inch preformed glass fiber pipe insulation.  
 3. "T" and Future Supplies for public hand sinks: ADA compliant pre-formed insulation.  
**END OF SECTION 15080**

**SECTION 15110 - VALVES**

- PART 1 - GENERAL (Not Applicable)**  
**2.1 GENERAL DUTY VALVES**  
**A. End Connections:** Threads shall comply with ANSI B1.20.1. Flanges shall comply with ANSI B16.1 for cast iron valves and ANSI B16.24 for bronze valves. Solder joint connections shall comply with ANSI B36.18.  
**B. Ball Valves:** Rated for 150 psig saturated steam pressure. ADA and WOG pressure; 2 piece construction; with bronze body, standard (or regular) port, chrome plated brass ball, replaceable "Teflon" or "TFE" seats and seals, blowout proof stem, and vinyl covered steel handle.  
**C. Plug Valves:** Rated at 150 psig WOG; bronze body, with straightaway pattern, square head, and threaded ends.  
**D. Swing Check Valves:** Class 125, cast bronze body and cap, with horizontal swing, T-pattern, and bronze disc.  
**E. Valves for Copper Tube:** Solder ends, except provide threaded ends for heating hot water and low pressure steam service.  
**F. Valves for Steel Pipe: Threaded ends.**  
**PART 3 - EXECUTION**  
**3.1 INSTALLATION**  
**A. Use gate and ball valves for shut-off duty and ball for throttling duty.**  
**B. Locate valves for easy access and provide easy support where necessary.**  
**C. Install accessible valves for each fixture and item of equipment.**  
**D. Install valves in horizontal piping with stem at or above center of pipe.**  
**E. Install valves in a position to allow full stem movement.**  
**F. Initial check valves for proper direction of flow in horizontal position with hinge pin level.**  
**END OF SECTION 15110**

**SECTION 15140 - DOMESTIC WATER PIPING**

- PART 1 - GENERAL**  
**1.1 SECTION REQUIREMENTS**  
**A. Performer Requirements:** Unless otherwise indicated minimum pressure requirements for water piping are as follows:  
 1. Service Entrance Piping: 100 psig.  
 2. Domestic Water Piping: 80 psig.  
**B. Comply with NSF 14 "Plastic Piping Components and Materials."**  
**C. Comply with NSF 61 "Drinking Water System Components - Health Effects."**  
**2.1 PIPS AND TUBES** (See Material Schedule on sheet P100 for where these materials are to be used)  
**A. Hard Copper Tube:** ASTM B 88, Types L and M, water tube, drawn temper.  
**2.2 FITTINGS**  
**A. Wrought Copper, Solder Joint Pressure Fittings:** ASME B 16.32.  
**B. Cast Copper Alloy, Solder Joint Pressure Fittings:** ASME B 16.18.  
**C. Bronze Flanges:** ASME B 16.24, Classes 150 and 300.  
**D. Copper Unions:** ASME B 16.38, cast copper alloy body, hexagonal stock, with ball and socket joint, metal to metal seating surfaces, and solder joint, threaded or solder joint and threaded ends. Threads complying with ASME B 1.20.1.  
**E. Copper and Copper Alloy Press Connect Pressure Fittings/Copper Press Fittings:** ASME B16.51  
**3.2 JOINING MATERIALS**  
**A. Solder:** Fillet Metal: ASTM B 32, lead free.  
**B. Braze:** Fillet Metal: AWS A5.8, alloy to suit system requirements.  
**C. Solvent Cements:** As recommended by manufacturer.  
**D. Plastic Pipe Seal:** ASTM F 437, elastomeric gasket.  
**PART 3 - EXECUTION**  
**3.1 VALVE APPLICATIONS**  
**A. Install gate valves close to main on each branch and riser serving two or more plumbing fixtures or equipment connections and where indicated.**  
**B. Install gate or ball valves on inlet to each plumbing equipment, on each supply to each plumbing fixture not having stops or supplies, and elsewhere as indicated.**  
**C. Install a service valve at base of each riser, at low points of horizontal runs, and where required to drain water distribution piping system.**  
**D. Install swing check valve on discharge side of each pump and elsewhere as indicated.**  
**E. Install ball valves in each hot water circulating loop and discharge side of each pump.  
 3.2 PIPING INSTALLATIONS**  
**A. Initial hangers and supports in intervals indicated in the applicable plumbing code and as recommended by pipe manufacturer.**  
**B. Support vertical piping at each floor.**  
**3.3 INSPECTING AND CLEANING**  
**A. Inspect and test piping systems following procedures of authorities having jurisdiction.**  
**B. Clean and disinfect water distribution piping following procedures of authorities having jurisdiction.**  
**END OF SECTION 15140**

**SECTION 15150 - SANITARY WASTE AND VENT PIPING**

- PART 1 - GENERAL**  
**1.1 SECTION REQUIREMENTS**  
**A. Minimum Pressure Requirement for Soil, Waste and Vent:** 10 foot head.  
**B. Comply with NSF 14 "Plastic Piping Components and Related Materials."**  
**PART 2 - PRODUCTS**  
**2.1 PIPS AND TUBES**  
**A. PVC Plastic, DWV Pipe:** ASTM D 2665, Schedule 40, plain ends.  
**2.2 FITTINGS**  
**A. PVC Plastic, DWV Pipe Fittings:** ASTM D 2665, made to ASTM A 3131; socket type; drain, waste, and vent pipe fittings.  
**PART 3 - EXECUTION**  
**3.1 PIPING INSTALLATION**  
**A. Install horizontal and extension to grade at connection of building sanitary drain and building sanitary vent.**  
**B. Locate drainage piping runoffs as close as possible to bottom of floor slab supporting fixtures or drains.  
 3.2 INSPECTION**  
**A. Inspect and test piping systems following procedures of authorities having jurisdiction.**  
**END OF SECTION 15150**

**SECTION 15198 - NATURAL GAS PIPING**

- PART 1 - GENERAL**  
**1.1 SECTION REQUIREMENTS**  
**A. Quality Assurance:** Comply with NFPA 54 and the Plumbing Code.  
**PART 2 - PRODUCTS**  
**2.1 PIPE, TUBE, AND SPECIALTIES**  
**A. Steel Pipe:** ASTM A 53, Type S (Seamless), Grade B, Schedule 40, plain ends.  
**B. Fittings:**  
 1. Ductile Iron Threaded Fittings: ASME B16.3, Class 150.  
 2. Cold Press Mechanical Joint Fitting System: Vega MegaFits  
**C. Manual Valves:** Comply with standards listed or, if appropriate, to ANSI Z21.15.  
**D. Gas Stops:** ADA certified, brass-body, plug type with bronze plug, for 1/2 inch or less natural gas. Include AGA stamp, flat or square head or lever handle, and threaded ends complying with ASME B1.20.1.  
**E. Gas Valve:** 150 psig WOG, cast iron or bronze body, bronze plug, straightaway pattern, square head, tapered plug type.  
**F. Gas Pressure Regulators:** ANSI Z21.18, single stage, steel jacketed, corrosion resistant pressure regulators. Include atmospheric vent, elevation compensator. Regulator pressure ratings, inlet and outlet pressures, and flow volume in cubic feet per hour of natural gas at specific gravity as so indicated.  
**G. Line Gas Pressure Regulators:** Inlet pressure rating not less than system pressure.  
**H. Flexible Connections:** ANSI Z21.24, copper alloy.  
**I. Strainers:** Bronze body, T-pattern, full size of connecting piping. Include stainless-steel screens with 1/64 inch perforations and a pressure rating of 125-psi; minimum, WOG working pressure.  
**PART 3 - EXECUTION**  
**3.1 INSTALLATION**  
**A. Close equipment shut-off valves before turning off gas to premises or section of piping. Perform leakage test as specified to determine that all equipment is turned off in affected piping section.**  
**B. Install shut-off valve, downstream from gas meter, outside building at gas service entrance.**  
**C. Install gas stops for shut-off to appliances with ANSI Z7 or smaller low pressure gas supply.**  
**D. Drips and Sediment Traps:** Install drips at points where condensate may collect. Include outlets of gas meters.  
**E. Install traps where readily accessible to permit cleaning and emptying. Do not install where condensate would be subject to freezing.**  
**F. Install gas piping at uniform slope of 0.1 percent upward toward risers.**  
**F. Connect branch piping from top of 1 side of horizontal piping.**  
**G. Install strainers on supply side of each control valve, gas pressure regulator, solenoid valve, and elsewhere as indicated.**  
**H. Install valves in accessible locations, protected from damage.**  
**I. Install gas valve upstream from each gas pressure regulator. Where two gas pressure regulators are installed in series, valve is not required at second regulator.**  
**J. Connect gas piping to equipment and appliances with shut-off valves and unions. Install gas valve upstream from and within 16 inches of each appliance using gas. Install union or flanged connection downstream from valve.**  
**K. Inspect, test, and purge piping according to NFPA 54, Part 4, "Gas Piping Inspection, Testing, and Purging;" and requirements of authorities having jurisdiction.**  
**END OF SECTION 15198**

**SECTION 15410 - PLUMBING FIXTURES**

- PART 1 - GENERAL**  
**1.1 SECTION REQUIREMENTS**  
**Submittals:** None.  
**A. Comply with requirements of Public Law 102-486, "Energy Policy Act," regarding water flow rate and water consumption of plumbing fixtures.**  
**B. Comply with applicable standards below:**  
 1. Enameled, Cast Iron Fixtures: ASME A112.19.1M.  
 2. National Sanitation Foundation Construction: NSF2.  
 3. Porcelain Enameled Fixtures: ASME A112.19.4M.  
 4. Slip Resistant Bathing Surfaces: ASTM F 462.  
 5. Stainless Steel Fixtures: ASME A112.19.3M.  
 6. Vitreous China Fixtures: ASME A112.19.2M.  
**PART 2 - PRODUCTS**  
**2.1 Refer to the fixture schedule on drawing P100**  
**PART 3 - EXECUTION**  
**3.1 INSTALLATION**  
**A. Install fixtures with flanges and gasket seals.**  
**B. Install flushometer valves for accessible water closets and urinals with handle mounted on wide side of compartment. Install other actuators in locations that are easy for the disabled to reach.**  
**C. Fasten wall hanging plumbing fixtures securely to supports attached to building substrate when supports are specified, and to building wall construction where no support is indicated.**  
**D. Fasten floor mounted fixtures to substrate. With fixtures having holes for securing fixture to wall construction, fasten to reinforcement built into walls.**  
**E. Fasten wall mounted fittings to reinforcement built into walls.**  
**F. Fasten counter mounted plumbing fixtures to counter.**  
**G. Secure supplies to supports or substrate within pipe space behind fixture.**  
**H. Set mop basin in leveling bed of cement grout.**  
**I. Install individual supply inlets, supply stops, supply risers, and tubular brass traps with cleanouts at fixture.**  
**J. Install water supply stop valves in accessible locations.**  
**K. Install traps on fixture outlets. Omit traps on fixtures having integral traps. Omit traps on indirect wastes, unless otherwise indicated or required by the Authority having jurisdiction.**  
**L. Install full-ring enclosures at wall, floor, and ceiling penetrations in exposed, finished locations and within cabinets and millwork. Use deep pattern enclosures when required to conceal protruding pipe fittings.**  
**M. Install piping connections between plumbing fixtures and piping systems and plumbing equipment. Install insulation on supplies and drains of fixtures for the disabled.**  
**N. Ground equipment. Tighten electrical connectors and terminals according to UL 486A and UL 486B.**  
**END OF SECTION 15410**

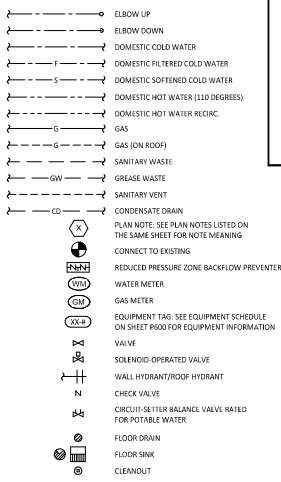
**SECTION 1555A - FLUES AND VENTS**

- PART 1 - GENERAL**  
**1.1 SECTION REQUIREMENTS**  
**A. Submittals:** None.  
**PART 2 - PRODUCTS**  
**2.1 GAS VENTS**  
**A. Vent/Air Intake for high efficiency domestic water heater. Follow manufacturer's recommendations for sizing and material.**  
**B. Accessories:** Tees, elbows, increasers, draft hood connectors, metal cap with bird barrier, adjustable roof flashing, storm collar, support assembly, thumbs, firestopping spacers, and fasteners; fabricated of similar materials and designs as vent pipe straight sections.  
**PART 3 - EXECUTION**  
**3.1 INSTALLATION**  
**A. Install vents according to stipulated minimum clearances from combustibles.**  
**B. Seal between sections of positive pressure vents using only sealants recommended by manufacturer.**  
**C. Support vents at intervals to support the weight of the vent and all accessories, without exceeding loading of appliances.**  
**END OF SECTION 1555A**

**PLUMBING GENERAL NOTES**

- A. GENERAL NOTES APPLY TO PLUMBING SHEETS.**  
**B. PLUMBING WORK SHALL BE DONE IN ACCORDANCE WITH THE PLUMBING CODE, LOCAL HEALTH DEPARTMENT STANDARDS, AND THE AUTHORITY HAVING JURISDICTION. SEE ARCHITECTURAL SHEETS FOR THE PREVIOUS CODES.**  
**C. PIPING LAYOUTS ON DRAWINGS ARE SCHEMATIC. EXACT LOCATIONS ARE TO BE COORDINATED WITH THE EXISTING CONDITIONS AND THE WORK OF OTHER TRADES.**  
**D. CONCEAL PIPING UNLESS NOTED OTHERWISE. WATER SUPPLY, BRAYS, AND DEBRIS PIPES SHALL BE INSTALLED LEVEL.**  
**E. PROVIDE SHUT-OFF VALVES FOR ISOLATION OF FIXTURE GROUPS AS SHOWN ON DRAWINGS IN ADDITION TO STOP VALVES AT EACH FUTURE.**  
**F. PROVIDE STOP VALVES AT FUTURES.**  
**G. PROVIDE TRAP PRIMERS FOR FLOOR DRAINS.**  
**H. WHERE THE WATER OR GAS SUPPLY LINE SIZE SHOWN IN THE PLUMBING DIAGRAMS DIFFERS FROM THE FIXTURE OR EQUIPMENT CONNECTION SIZE, PROVIDE LINE SIZE PIPE TO FIT WITHIN 6" OF THE FIXTURE OR EQUIPMENT BEFORE TRANSITIONING TO THE CONNECTION SIZE.**  
**I. FINISH IN EXTERIOR WALLS SHALL BE INSTALLED BETWEEN THE INSULATION AND THE INTERIOR WALL FINISHING MATERIAL.**  
**J. INSULATE THE HOT AND COLD WATER, CONDENSATE DRAINAGE, AND STOPDM PIPING PER THE PLUMBING CODE.**  
**K. PROVIDE GAS SHUT-OFF VALVES AT EACH PIECE OF EQUIPMENT. PROVIDE ACCESSIBLE DIRT LEG AT THE BOTTOM OF VERTICAL SECTIONS OF GAS PIPE AND AT THE CONNECTION TO EACH PIECE OF EQUIPMENT.**  
**L. PLUMBING FIXTURES, ACCESSORIES, AND MATERIALS PROVIDED FOR DOMESTIC WATER SHALL BE LEAD FREE.**  
**M. PRIOR TO TURNOVER PERFORM A VIDEO INSPECTION OF THE SANITARY AND GREASE LINES FROM THE MAIN LINES WITH THE TENANT SPACE TO THE MAIN SEWER TO VERIFY THAT THE SANITARY WASTE SYSTEM IS CONNECTED, CLEAN, AND FREE OF SAGS, BELLS, BUCKLES, AND DEBRIS. DELIVER A REPORT AND COPY OF THE VIDEO TO THE TENANT'S CONSTRUCTION MANAGER PRIOR TO TURNOVER.**  
**N. THE TERM "FURNISH" MEANS SUPPLY AND DELIVER TO THE PROJECT SITE, READY FOR UNLOADING, UNWINDING, ASSEMBLY, INSTALLATION, AND SIMILAR OPERATIONS. THE TERM "INSTALL" DESCRIBES THE OPERATIONS AT THE PROJECT SITE INCLUDING THE ACTUAL UNLOADING, UNPACKING, ASSEMBLY, ERECTING, PLACING, ANCHORING, APRYING, WORKING TO CORRECT, FINISHING, CURING, PROTECTING, CLEANING, AND SIMILAR OPERATIONS. THE TERM "PROVIDE" MEANS TO FURNISH AND INSTALL, COMPLETE AND READY FOR THE INTENDED USE.**  
**O. PRIOR TO CONNECTION TO ANY EXISTING SEWER SYSTEM PERFORM A DIE TEST TO VERIFY THE TYPE OF SYSTEM AND THE DIRECTION OF FLOW. REPORT ANY DEVIATION FROM THE CONSTRUCTION DOCUMENTS TO THE TENANT'S CONSTRUCTION MANAGER.**  
**P. PROVIDE SANITARY AND GREASE WASTE PIPES AT A MINIMUM SLOPE OF 1/4" PER FOOT UNLESS NOTED OTHERWISE.**  
**Q. INSTALL SHUTOFF AND ISOLATION VALVES SHOWN TO BE ABOVE CEILING IN ACCESSIBLE LOCATIONS WITHIN 12" OF LAY-IN CEILING.**  
**R. PERFORM A FLOW TEST ON THE DOMESTIC WATER SERVICE AT POSSESSION. IF THE STATIC WATER PRESSURE IS OVER 80 PSI THEN COORDINATE WITH CHOPOTLE CONSTRUCTION MANAGER TO PROVIDE A PRESSURE REGULATOR (WATTS FUSB 23 OR EQUAL). PROVIDE RESULTS OF THE FLOW TEST TO THE ENGINEER FOR CONFIRMATION OF ADEQUATE CAPACITY.**

**PLUMBING SYMBOLS**



**PLUMBING ABBREVIATIONS**

AFP	ABOVE FINISHED FLOOR
ATG	ABOVE FINISHED GRADE
(E)	EXISTING
EXT	EXISTING
FD	FLOOR CLEANOUT
FD	FLOOR DRAIN
FS	FLOOR SINK
GO	GRADE CLEANOUT
CGAS	GENERAL CONTRACTOR
HE	TENANT'S HVAC EQUIPMENT SUPPLIER
HS	TENANT'S HOOD SUPPLIER
KES	TENANT'S KITCHEN EQUIPMENT SUPPLIER
TAB	TENANT'S TEST AND BALANCE VENDOR
TCC	TENANT'S CABLING CONTRACTOR
TD	TENANT'S DUCT CLEANER
TEMS	TENANT'S ENERGY MANAGEMENT SYSTEM SUPPLIER
TL	TENANT'S LIGHT/LAMP SUPPLIER
TMR	TENANT'S MENU BOARD SUPPLIER
MS	TENANT'S MILLWORK SUPPLIER
PI	TENANT'S PHONE SUPPLIER
TFS	TENANT'S PANDBOXER SUPPLIER
TSS	TENANT'S SAILING SUPPLIER
TSV	TENANT'S SIGN VENDOR
TSV	TENANT'S UV SANITIZER SUPPLIER
WCS	TENANT'S WALK IN COOLER SUPPLIER
WHS	TENANT'S WATER HEATER SUPPLIER

**PLUMBING MATERIAL SCHEDULE**

CATEGORY	APPLICATION	ALLOWABLE MATERIAL
WATER SUPPLY PIPE	ABOVE GRADE	TYPE L COPPER TUBE
	CONCEALED	SCH. 40 STEEL PIPE, MALLEABLE IRON THREADED FITTINGS
NATURAL GAS PIPE	CONCEALED	SCH. 40 STEEL PIPE, MALLEABLE IRON THREADED FITTINGS, PAINTED
	EXPOSED	PVC PLASTIC DWV PIPE AND FITTINGS
SANITARY WASTE & VENT PIPE	ABOVE GROUND, CONCEALED	PVC PLASTIC DWV PIPE AND FITTINGS
	ABOVE GROUND, EXPOSED	PVC PLASTIC DWV PIPE AND FITTINGS
SANITARY WASTE & VENT PIPE	ABOVE GROUND, AND-SINK DRAINS	BRASS WITH CHROME FINISH
	BELOW GROUND	PVC PLASTIC DWV PIPE AND FITTINGS

PLAN NOTE: SEE PLAN NOTES LISTED ON THE SAME SHEET FOR NOTE MEANING. CONNECT TO EXISTING. REDUCED PRESSURE ZONE BACKFLOW PREVENTER. WATER METER. GAS METER. EQUIPMENT TAG. SEE EQUIPMENT SCHEDULE ON SHEET P600 FOR EQUIPMENT INFORMATION.

**NATIONAL ENGINEERING**  
 4810 Truman Blvd., Suite 200, Orlando, FL 32816  
 Phone: (407) 594-9117 Fax: (407) 594-1040  
 Contact: Andy Janosik (407) 594-2028  
 a.janosik@nationalengineering.com

CHOPOTLE CONSTRUCTION, INC.  
 1001 N. W. 11th St., Suite 100, Ft. Lauderdale, FL 33304  
 Phone: (954) 581-2800  
 Internet: www.chopotle.com

STORE NO. - 4496  
 NORTH NAPLES  
 NWC IMMOKALEE RD & COLLIER BLVD.  
 NAPLES, FL 34119

Issue Report:	10-04-2024	PERMIT SET
Issue Report:	11-26-2024	BID SET
Issue Report:	01-08-2025	CONSTRUCTION SET
Drawn:		Checked:
Appr:		All:
Project No:	2301190	
Contract:		

**PLUMBING SPECIFICATIONS**

**P1010**

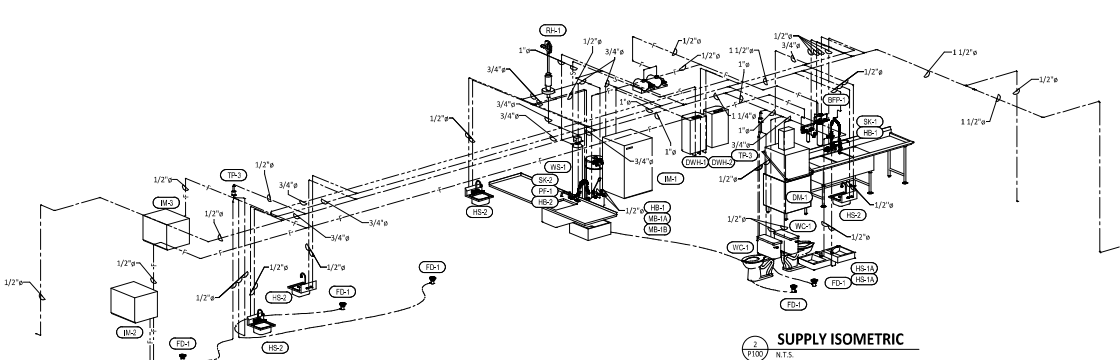
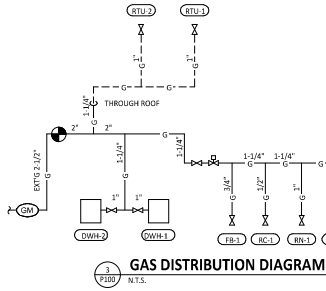
**PLUMBING FIXTURE SUPPLY CONNECTIONS**

ROUGH-IN TYPE KEY										
ANGLE 3/8"	BRASS CRAFT KTR19 OR EQUAL (BRASS/CHROME 1/4 TURN ANGLED BALL STOP WITH 3/8" COMPRESSION CONNECTION)									
ANGLE 1/2"	BRASS CRAFT R839 C OR EQUAL (BRASS/CHROME MULTI-TURN ANGLE STOP WITH 1/2" COMPRESSION CONNECTION)									
ANGLE 3/4"	EVERFLOW 74342-NL W/ 3/4" SWEAT X MIP ADAPTER OR EQUAL (BRASS ANGLE STOP 3/4" FIP INLET AND OUTLET)									
DIRECT	PROVIDE COPPER PIPE IN CONNECTION SIZE SHOWN TO FIXTURE									
HOSE 1/2"	ARROWHEAD BRASS WMSOF OR EQUAL (BRASS/CHROME WASHING MACHINE VALVE W/ 3/4" MHT OUTLET)									
MIP	PROVIDE PIPE WITH MIP THREAD STUBBED OUT OF WALL IN CONNECTION SIZE SHOWN AND LENGTH COMPATIBLE WITH FIXTURE AND WALL MATERIAL/FINISHES.									
TAG	FIXTURE	CONNECTION SIZES		ROUGH-IN TYPE	FIXTURE UNITS (EACH)			FIXTURE UNITS (TOTAL)		
		CW	HW		CW	HW	TOTAL	CW	HW	TOTAL
DBP-1	RPIZ BACKFLOW PREVENTER	1/2"		DIRECT	1		1	1		1
DBP-1	DISH SANITIZING MACHINE (PUMPED OUTLET)	1/2"	3/4"	HOSE 1/2"	0	1	1	0	1	1
ET-1	EXPANSION TANK	3/4"		DIRECT	0	0	0	1	0	0
HB-1	HOSE BIBB	1/2"	1/2"	MIP	1.5	1.5	2	1.5	1.5	4
HB-2	HOSE BIBB	1/2"		MIP	1.5	0	1.5	1	1.5	0
HS-1B	RESTROOM HAND SINK FAUCET	1/2"	1/2"	ANGLE 3/8"	1.5	1.5	2	1	1.5	1.5
HS-2	KITCHEN HAND SINK	1/2"	1/2"	ANGLE 3/8"	1.5	1.5	2	1	1.5	1.5
IM-1	ICE MAKER - BSH	1/2"		HOSE 1/2"	1	0	1	1	1	0
IM-2	ICE MAKER - SODA	1/2"		HOSE 1/2"	1	1	1	1	1	1
IM-3	ICE MAKER - SODA	1/2"		HOSE 1/2"	1	1	1	1	1	1
MB-1B	MOP BASIN FAUCET	1/2"	1/2"	MIP	2.25	2.25	3	1	2.25	2.25
PF-1	POT FILLER	1/2"		MIP	1.5	0	1.5	1	1.5	0
RH-1	FIELD CLIMATE ROOF HYDRANT	3/4"		DIRECT	1	0	1	1	1	0
SK-1	THREE COMPARTMENT SINK	1/2"	1/2"	ANGLE 1/2"	4	4	4	1	4	4
SK-2	PREP SINK	3/4"	3/4"	ANGLE 3/4"	3	3	4	1	3	3
WC-1	WATER CLOSET	1/2"		ANGLE 3/8"	5	0	5	1	5	0
WH-1	FIELD CLIMATE WALL HYDRANT	3/4"		<varies>	1	0	1	1	1	0
WS-1	WATER SORTNER	1"		DIRECT	0	0	0	1	0	0
										48

**CONNECTED GAS LOAD**

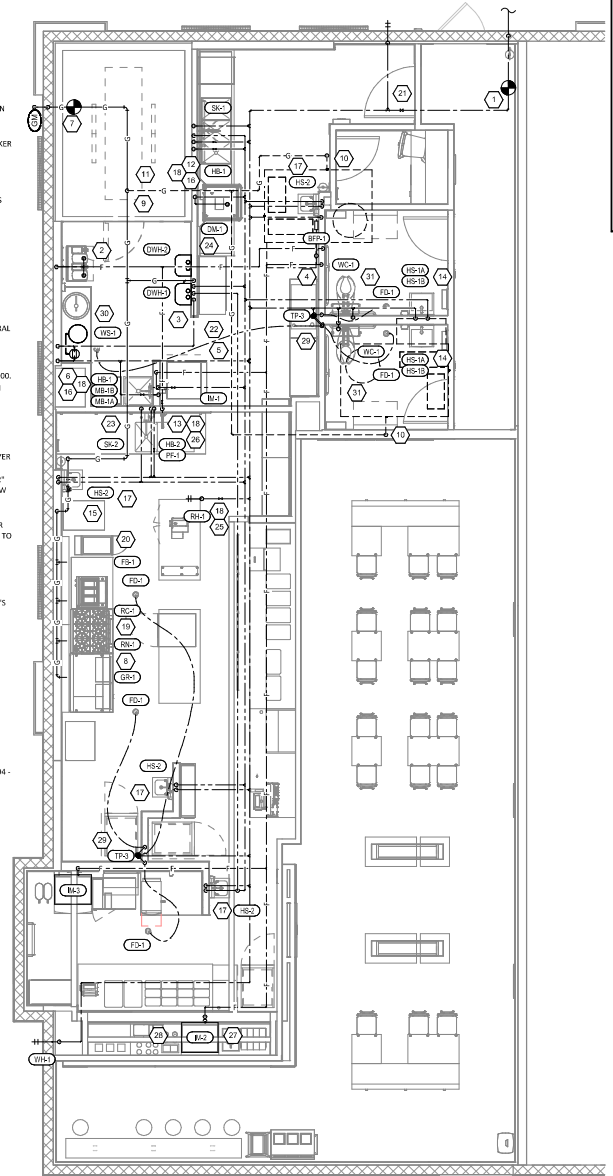
FIXTURE	TAG	MBH	EQUIVALENT LENGTH FROM METER [FT]
WATER HEATER	DWH-1	199	50
WATER HEATER	DWH-2	199	50
GAS FRYER	FB-1	90	75
GRIDDLE	GR-1	107	90
RICE COOKER	RC-1	33	60
RANGE	RH-1	192	85
KITCHEN ROOFTOP UNIT	RTU-1	180	80
DINING ROOM ROOFTOP UNIT	RTU-2	180	60
Grand total		1180	Max: 90

- NOTES:  
 1. PRESSURE REQUIRED AFTER METER: 7" W.C.  
 2. DISTANCES ARE APPROXIMATE



**PLUMBING SUPPLY PLAN NOTES**

- CONNECT TO THE EXISTING 1-1/2" DOMESTIC WATER SERVICE.
- PROVIDE 1/2" FIP TRIP WATER TO THE BASIN BOX SODA CARBONATOR AT 102" AFF. SODA CARBONATOR SHALL HAVE AN INTEGRAL ASSE 1002-RATED CARBONATED BEVERAGE BACKFLOW PREVENTION DEVICE.
- PROVIDE WATER HEATER DWH-1 PER DETAIL 11/P700.
- PROVIDE WATER FILTERS MOUNTED TO WALL PER DETAIL 11/P700. PROVIDE 1/2" SUPPLY PIPES FROM FILTERS TO ICE MAKER AND SODA CARBONATOR AS SHOWN.
- PROVIDE 1/2" FILTERED WATER ROUGH-IN TO THE ICE MAKER AT 56" AFF. PROVIDE 6" LONG STAINLESS STEEL FLEXIBLE BRAIDED WASHING MACHINE WATER CONNECTOR WITH MINIMUM 0.43" ID (BRASSCRAFT S112-72WA F OR EQUAL) FOR FINAL CONNECTION TO ICE MAKER.
- PROVIDE DOMESTIC WATER ROUGH-INS FOR THE MOP BASIN FAUCET AT 36" AFF. PROVIDE DOMESTIC WATER ROUGH-INS FOR THE CHEMICAL DISPENSER FAUCET (HB-1) AT 64" AFF DIRECTLY ABOVE THE MOP BASIN FAUCET. SEE ARCHITECTURAL ELEVATION FOR ADDITIONAL INFORMATION.
- CONNECT TO THE EXISTING GAS LINE.
- PROVIDE GAS CONNECTIONS TO THE COOKING EQUIPMENT PER DETAIL 7/P700.
- SUPPORT THE GAS PIPE ON THE ROOF PER DETAIL 5/P700. WOOD BLOCKING IS NOT AN ACCEPTABLE METHOD OF SUPPORTING THE GAS PIPE.
- PROVIDE ACCESSIBLE LINE-SIZE GAS VALVE, DIRT LEG, AND UNION AT GAS CONNECTION TO THE EQUIPMENT.
- REFER TO ARCHITECTURAL DRAWINGS FOR PAINTING OF INTERIOR AND EXTERIOR EXPOSED GAS PIPE.
- PROVIDE DOMESTIC WATER ROUGH-INS FOR THE CHEMICAL DISPENSER FAUCET (HB-1) AT 52" AFF. SEE ARCHITECTURAL ELEVATION FOR ADDITIONAL INFORMATION.
- PROVIDE DOMESTIC WATER ROUGH-INS FOR THE VICTORY WASH DISPENSER FAUCET (HB-2) AT 52" AFF. SEE ARCHITECTURAL ELEVATION FOR ADDITIONAL INFORMATION.
- PROVIDE ROUGH-INS TO RESTROOM HAND SINKS AS SHOWN IN DETAIL 14/P700.
- PROVIDE KITCHEN EQUIPMENT GAS SHUTOFF 6" BELOW THE CEILING PER DETAIL 4/P700.
- CONNECT CHEMICAL DISPENSER TO HB-1. CHEMICAL DISPENSER HAS AN INTEGRAL AIR GAP AS IS SHOWN IN DETAIL 10/P700.
- PROVIDE ASSE 1016/1070 POINT-OF-USE THERMOSTATIC MIXING VALVE WATTS LFUG 8. ON WATER SUPPLY TO KITCHEN PREP SINK, PROVIDE ANGLE BELOW SINK. FASTEN MIXING VALVE TO WALL, AND MAKE FINAL CONNECTION FROM ANGLE STOPS TO MIXING VALVE AND FROM MIXING VALVE TO FAUCET USING BRAIDED STAINLESS STEEL HOSE. ADJUST MIXING VALVE FOR A DISCHARGE TEMPERATURE OF APPROXIMATELY 110° F.
- PROVIDE ACCESSIBLE VALVE IN WATER SUPPLY TO FIXTURE AS SHOWN.
- PROVIDE GAS CONNECTION TO THE RICE COOKER PER DETAIL 9/P700.
- PROVIDE GAS ROUGH-IN TO FRYER BEHIND RICE COOKER TABLE SO THAT VALVES AND DIRT LEG ARE ACCESSIBLE ONCE FRYER IS SECURED INTO PLACE.
- PROVIDE AN ACCESSIBLE MAIN DOMESTIC WATER SHUTOFF VALVE ABOVE LAY-IN CEILING AS SHOWN. VALVE SHALL BE 12" ABOVE THE TOP OF THE LAY-IN CEILING. PERMANENTLY INSTALL THE "WATER SHUTOFF" SIGN TO THE CEILING GRID BELOW THE VALVE.
- INSTALL RGF IMSS ICE MAKER SANITIZER FURNISHED BY TUV PER CHIPOTLE'S INSTALLATION INSTRUCTIONS.
- PROVIDE 3/4" DOMESTIC HOT AND COLD WATER ROUGH-INS FOR THE PREP SINK (SK-2) FAUCET AT 24" AFF TO ALLOW FOR THE VICTORY WASH CHEMICAL DOCK TO BE INSTALLED DIRECTLY BELOW THE PREP SINK BASIN. MAKE FINAL CONNECTION TO PREP SINK FAUCET USING 1/4" BRAIDED STAINLESS STEEL WATER CONNECTOR HOSE.
- PROVIDE 1/2" HOT WATER TO THE DISH MACHINE AT 60" AFF ABOVE LEFT SIDE OF DISH MACHINE. MAKE FINAL CONNECTION USING HOSE FURNISHED WITH DISH MACHINE. PROVIDE WATER HAMMER ARRESTOR ON HOT WATER LINE.
- PROVIDE ROOF HYDRANT RH-1 WITH BOTTOM OF NOZZLE INSTALLED 24" ABOVE THE BOTTOM OF ROOF DECK. PROVIDE ACCESSIBLE ISOLATION VALVE IN WATER SUPPLY TO ROOF HYDRANT. SUPPORT ROOF HYDRANT PER THE MANUFACTURER'S INSTALLATION INSTRUCTIONS.
- PROVIDE FILTERED DOMESTIC WATER ROUGH-INS FOR THE SPEED FILL POT FILLER FAUCET (PF-1) AT 40" AFF. SEE ARCHITECTURAL ELEVATION FOR DETAIL.
- PROVIDE 1/2" FILTERED WATER ROUGH-IN TO THE ICE MAKER AT 24" AFF. PROVIDE 6" LONG STAINLESS STEEL FLEXIBLE BRAIDED WASHING MACHINE WATER CONNECTOR WITH MINIMUM 0.43" ID (BRASSCRAFT S112-72WA F OR EQUAL) FOR FINAL CONNECTION TO ICE MAKER.
- INSTALL RGF IMSS ICE MAKER SANITIZER FURNISHED BY TUV PER CHIPOTLE'S INSTALLATION INSTRUCTIONS. LOCATE IMSS BELOW UTENSIL COUNTER IN A LOCATION THAT DOES NOT INTERFERE WITH THE ROLLING BACK BELOW THE UTENSIL COUNTER.
- PROVIDE ACCESSIBLE TRAP PRIMER ABOVE LAY-IN CEILING AS SHOWN. INSTALL PER MANUFACTURER'S INSTALLATION INSTRUCTIONS WITH A SERVICE VALVE AT THE TRAP PRIMER INLET. PROVIDE 1/2" DISTRIBUTION (PIPE)S TO FLOOR DRAIN TRAP PRIMER CONNECTION(S) AS SHOWN. HORIZONTAL DISTRIBUTION PIPING SHALL HAVE CONTINUOUS SLOPE TO THE FLOOR DRAIN(S).
- PROVIDE WATER SOFTENER AS SHOWN IN DETAIL 16/P700.
- REPLACE STOCK WATER CLOSET HANDLE WITH UNIVERSAL CABLE-OPERATED HANDLE (FLUSHMATE AP300503 OR AP300504 - FIELD VERIFY COMPATIBILITY WITH FLUSHMATE SYSTEM IN WATER CLOSET).



**PLUMBING SUPPLY PLAN**  
 3/4" = 3'-0"

**NATIONAL ENGINEERING**  
 4815 Tamiami Trail, Suite 200 Collier, FL 34208  
 Phone: (813) 504-9117 Fax: (813) 504-1340  
 Contact: Andy Janosik (641) 328-2028  
 ajanosik@nationalengineering.com

FOR CONSTRUCTION

CHIPOTLE MEXICAN GRILL, INC.  
 10001 W. BOULEVARD, SUITE 100  
 BOULDER, CO 80504  
 TEL: (303) 440-1234  
 WWW.CHIPOTLE.COM

STORE NO. - 4496  
 NORTH NAPLES  
 NWC IMMOKALEE RD & COLLIER BLVD.  
 NAPLES, FL 34119

Issue Revised:	10.04.2024	PERMIT SET
	11.26.2024	BID SET
	01.08.2025	CONSTRUCTION SET

Drawn:	Checked:
All:	All:
Project No:	2301190
Contract:	

**PLUMBING PLAN**  
 WATER & GAS  
**P100**



**PLUMBING FIXTURE SCHEDULE**

TAG	FIXTURE	FURNISHED BY	INSTALLED BY	MANUFACTURER	MODEL	DESCRIPTION	QUANTITY	CONNECTION SIZES			FIXTURE UNITS (EACH)				FIXTURE UNITS (TOTAL)			
								CW	HW	WASTE	CW	HW	TOTAL	SAN	CW	HW	TOTAL	SAN
BFP-1	RPZ BACKFLOW PREVENTER	GC	GC	CONBRACO	44U-203-12P	LEAD FREE REDUCED PRESSURE PRINCIPLE BACKFLOW PREVENTER WITH AUTOMATIC DIFFERENTIAL RELIEF VALVE	1	1/2"			1				1	0	1	0
DM-1	DISH SANITIZING MACHINE (PUMPED OUTLET)	KES	GC	FURNISHED BY KES	-	CHEMICAL SANITIZING DISH MACHINE WITH INTEGRAL ELECTRIC BOOSTER HEATER AND PUMPED OUTLET	1		1/2"	3/4"	0	1	1	0	0	1	1	0
ET-1	EXPANSION TANK	GC	GC	JANITROL	ST-5	2 GALLON CAPACITY	1	3/4"			0	0	0	0	0	0	0	0
FOC-1	FLOOR CLEANOUT (4")	GC	GC	SIOUX CHIEF	852-4PWR	ON-GRADE ADJUSTABLE CLEANOUT WITH INTERNAL THREADED CLEANOUT PLUG AND ROUND NICKEL-BRONZE RING AND COVER (OR APPROVED EQUAL WITH INTERNAL THREADED CLEANOUT PLUG)	2			4"				0	0	0	0	0
FOC-2	FLOOR CLEANOUT (3")	GC	GC	SIOUX CHIEF	852-3PWR	ON-GRADE ADJUSTABLE CLEANOUT WITH INTERNAL THREADED CLEANOUT PLUG AND ROUND NICKEL-BRONZE RING AND COVER (OR APPROVED EQUAL WITH INTERNAL THREADED CLEANOUT PLUG)	1			3"				0	0	0	0	0
FD-1	FLOOR DRAIN	GC	GC	SIOUX CHIEF	842-2-PWR	ADJUSTABLE FLOOR DRAIN, ROUND POLISHED METAL RING AND STRAINER	6			2"				0	2	0	0	0
FN-1	FUNNEL DRAIN	GC	GC	JAY R. SMITH	3832T	FUNNEL DRAIN WITH CAST BRONZE BODY AND THREADED OUTLET	1			2"				0	0	2	0	0
FS-1	FLOOR SINK	GC	GC	SIOUX CHIEF	861-3PU2	HEAVY DUTY PVC FLOOR SINK WITH ALUMINIUM DOME BOTTOM STRAINER AND OPEN HALF PVC GRATE	7			3"				0	5	0	0	0
HB-1	HOSE BIBB	KES	GC	T&S	B-2345-01-XX	COMMERCIAL QUALITY HOT & COLD MIXING WALL HYDRANT. SUPPLY ARMS SHALL HAVE INTEGRAL SHUT-OFF STOP AND CHECK VALVE.	2	1/2"	1/2"		1.5	1.5	2	0	3	3	4	0
HB-2	HOSE BIBB	KES	GC	T&S	B-6730	SILL FAUCET WITH 1/2" NPT FEMALE INLET AND 3/4" GARDEN HOSE THREADED OUTLET.	1	1/2"			1.5	0	1.5	0	1.5	0	1.5	0
HS-1A	RESTROOM HAND SINK	GC	GC	AMERICAN STANDARD	8004-001EC	ADA ACCESSIBLE, WALL MOUNTED, PORCELAIN LAVATORY. PROVIDE ZURN 21231 (21231-D FOR BACK TO BACK APPLICATIONS) CONCEALED ARM CARRIER IN WALL. APPROVED ALTERNATE: KOHLER K-2084	2	0"	0"	2"	0	0	0	1	0	0	0	2
HS-1B	RESTROOM HAND SINK FAUCET	KES	GC	FURNISHED BY KES	-	PLUG-IN AUTOMATIC FAUCET WITH 0.5 GPM AERATOR AND THERMOSTATIC MIXING VALVE. ADJUST FAUCET CONTROLS FOR 10 SECOND SHUTOFF DELAY AND 30 SECOND TIME OUT DELAY.	2	1/2"	1/2"	0"	1.5	1.5	2	0	3	3	4	0
HS-2	KITCHEN HAND SINK	KES	GC	FURNISHED BY KES	-	STAINLESS STEEL SINK WITH WALL MOUNTING BRACKET AND BACKSPASH MOUNTED FAUCET WITH SWIVEL GOOSENECK	4	1/2"	1/2"	2"	1.5	1.5	2	1	6	6	8	4
IM-1	ICE MAKER - BOH	KES	GC	SEE ARCH	-	BACK OF HOUSE ICE MAKER WITH BIN (STANDARD CAPACITY REMOTE AIR COOLED)	1	1/2"			1	0	1	0	1	0	1	0
IM-2	ICE MAKER - SODA	KES	KES	SEE ARCH	-	SODA MACHINE-MOUNTED ICE MAKER (INTEGRAL AIR COOLED)	1	1/2"			1			1	0	1	0	0
IM-3	ICE MAKER - SODA	KES	KES	SEE ARCH	-	SODA MACHINE-MOUNTED ICE MAKER (REMOTE AIR COOLED)	1	1/2"			1			1	0	1	0	0
MB-1A	MOP BASIN	GC	GC	FIAT	MS92424	PROVIDE 24"x24"x10" MOLDED-STONE MOP BASIN. INSTALL MOP BASIN IN A BED OF CROUT SO THERE ARE NO VOIDS BETWEEN THE MOP BASIN AND THE SLAB.	1	0"	0"	3"	0	0	0	3	0	0	0	3
MB-1B	MOP BASIN FAUCET	KES	GC	FURNISHED BY KES	-	SERVICE SINK FAUCET WITH BUILT-IN STOPS, LEVER HANDLES, AND WALL BRACE.	1	1/2"	1/2"	0"	2.25	2.25	3	0	2.25	2.25	3	0
PF-1	POT FILLER	KES	GC	FURNISHED BY KES	-	WALL-MOUNTED POT FILLER W/ SELF-CLOSING FILLER VALVE AND 3/8" NPT FEMALE INLET	1	1/2"			1.5	0	1.5		1.5	0	1.5	0
RH-1	MILD CLIMATE ROOF HYDRANT	GC	GC	WOODFORD	RHMC-MS	ROOF HYDRANT WITH ASSE 1052 DUAL CHECK BACKFLOW PREVENTER	1	3/4"			1	0	1		1	0	1	0
SK-1	THREE COMPARTMENT SINK	KES	GC	FURNISHED BY KES	-	THREE-COMPARTMENT WARE-WASHING SINK FURNISHED WITH (1) PRE-RINSE UNIT WITH ADD-ON FAUCET	1	1/2"	1/2"	2"	4	4	4	5	4	4	4	5
SK-2	PREP SINK	KES	GC	FURNISHED BY KES	-	STAINLESS STEEL PREP TABLE WITH INTEGRAL PREP SINK. FURNISHED WITH "BIG FLO" FAUCET	1	3/4"	3/4"	2"	3	3	4	0	3	3	4	0
TD-1	TRENCH DRAIN	GC	GC	ZURN	Z886-8601 8602	6" X 160" HDPE TRENCH DRAIN (SLOPED FROM 3.50" TO 4.70") WITH (2) CLOSED END CAPS, (1) 4" NO-HUB BOTTOM OUTLET, AND CLASS-A WHEEL-PROOF POLYETHYLENE GRATES. SEE DETAIL 12/P700 FOR REDUCTION TO 2" DRAIN CONNECTION.	1			2"	0	0	0	2	0	0	0	2
TP-3	TRAP PRIMER (THREE-FOUR FLOOR DRAINS)	GC	GC	PRECISION PLUMBING PRODUCTS	P1-500 W/ PUL-F	TRAP PRIMER WITH INTEGRAL VACUUM BREAKER AND DISTRIBUTION UNIT. CAP UNINDEXED DISTRIBUTION UNIT. OUTLETS.	2	1/2"			0	0	0	0	0	0	0	0
WC-1	WATER CLOSET	GC	GC	KOHLER	K-3519 W/ SEAT K-4666-C	WHITE HIGHLINE 1.0 GPF, 17-1/8" HIGH, ADA ACCESSIBLE, PRESSURE ASSIST WATER CLOSET WITH OPEN FRONT SEAT. INSTALL TRIP LEVER ON THE TANK TO THE OPEN SIDE OF THE STALL (ADD: RA TO THE MODEL IF FOR RIGHT HAND TRIP LEVER).	2	1/2"		3"	5	0	5	4	10	0	10	8
WH-1	MILD CLIMATE WALL HYDRANT	GC	GC	WOODFORD	MODEL 84	WALL HYDRANT WITH ANTI-SIPHON VACUUM BREAKER	2	3/4"			1	0	1	0	2	0	2	0
WS-1	WATER SOFTENER	KES	GC	CUNO	CFSM1254E	POINT OF ENTRY HIGH CAPACITY WATER TREATMENT SYSTEM	1	1"			0	0	0	0	0	0	0	0
							48				41.25	22.25	48	73				

**WATER HEATER SCHEDULE - INSTANTANEOUS**

TAG	DESCRIPTION	FURNISHED BY	INSTALLED BY	MANUFACTURER	MODEL	INPUT MBH	DELIVERY	NOTES
DWH-1	DIRECT VENT GAS-FIRED INSTANTANEOUS WATER HEATER	GC	GC	NAVIEN	NPE-240A2	199	354 GPM @ 67° RISE	RATED FLOW RATE: 5.6 GPM @ 67° RISE THERMAL EFFICIENCY: 96%
DWH-2	DIRECT VENT GAS-FIRED INSTANTANEOUS WATER HEATER	GC	GC	NAVIEN	NPE-240A2	199	354 GPM @ 65° RISE	RATED FLOW RATE: 5.6 GPM @ 67° RISE THERMAL EFFICIENCY: 96%
								PROVIDE WITH LEAD FREE "PLUMB EASY VALVE SET". GC SHALL PURCHASE WATER HEATER DIRECTLY THROUGH A NAVIEN AUTHORIZED DISTRIBUTOR (1-800-519-8794 OR WWW.NAVIEN.COM TO LOCATE AUTHORIZED DISTRIBUTOR).
								PROVIDE WITH LEAD FREE "PLUMB EASY VALVE SET". GC SHALL PURCHASE WATER HEATER DIRECTLY THROUGH A NAVIEN AUTHORIZED DISTRIBUTOR (1-800-519-8794 OR WWW.NAVIEN.COM TO LOCATE AUTHORIZED DISTRIBUTOR).

Company:



4815 Tamiami Trail, Suite 200, Collier, FL 34203  
Phone: (813) 554-9117 Fax: (813) 554-1140  
Contact: Andy Janosik  
(641) 328-2028  
ajanosik@nationalengineering.com

FOR CONSTRUCTION

COPYRIGHT 2020  
THIS DRAWING IS AN INSTRUMENT OF SERVICE AND IS THE PROPERTY OF CHAIPOITLE MEXICAN PAINTS, INC. NO REUSE OR FOR USE OF THIS DOCUMENT IS ALLOWED AND CAN BE EXTENDED ONLY BY WRITTEN AGREEMENT WITH CHAIPOITLE MEXICAN PAINTS, INC.



CHAIPOITLE MEXICAN PAINTS, INC.  
PO BOX 48156  
COLLEGE, OH 43129-2046  
TELEPHONE: (614) 233-5192  
INTERNET: WWW.CHAIPOITLE.COM

STORE NO. - 4496

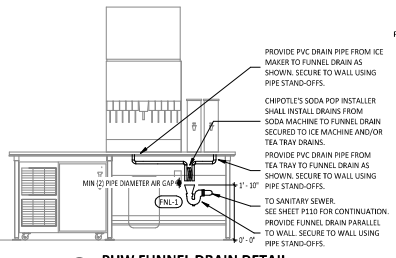
NORTH NAPLES  
NWC IMMOKALEE RD & COLLIER  
BLVD.  
NAPLES, FL 34119

Issue Revised:  
10.04.2024 PERMIT SET  
11.26.2024 BID SET  
01.08.2025 CONSTRUCTION SET

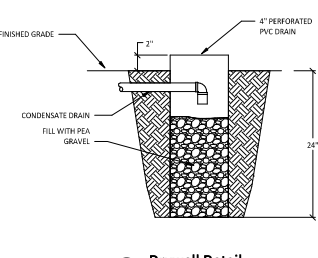
Drawn: \_\_\_\_\_  
All: \_\_\_\_\_  
Project No: 2301190  
Company: \_\_\_\_\_

PLUMBING  
SCHEDULES

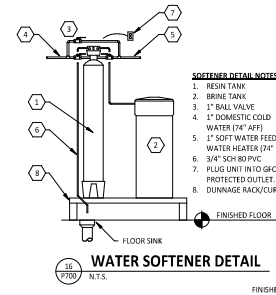
P600



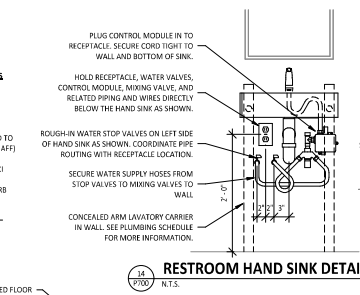
**PUW FUNNEL DRAIN DETAIL**  
18 P700 N.T.S.



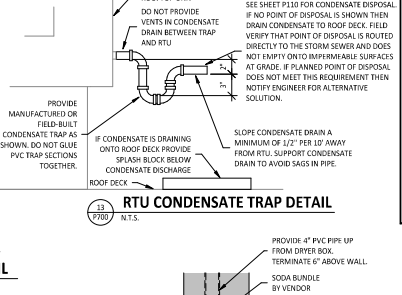
**Drywell Detail**  
17 P700 N.T.S.



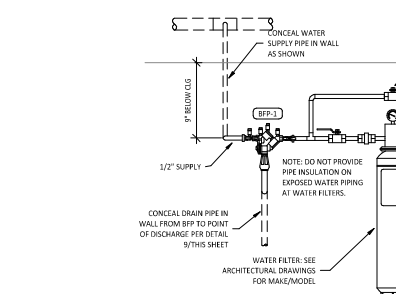
**WATER SOFTENER DETAIL**  
16 P700 N.T.S.



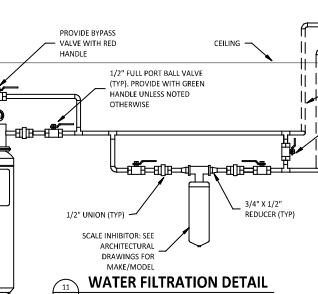
**RESTROOM HAND SINK DETAIL**  
14 P700 N.T.S.



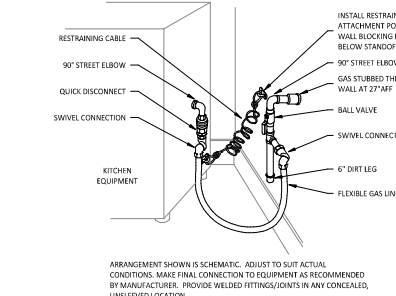
**RTU CONDENSATE TRAP DETAIL**  
13 P700 N.T.S.



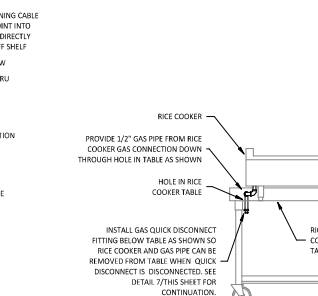
**WATER FILTRATION DETAIL**  
11 P700 N.T.S.



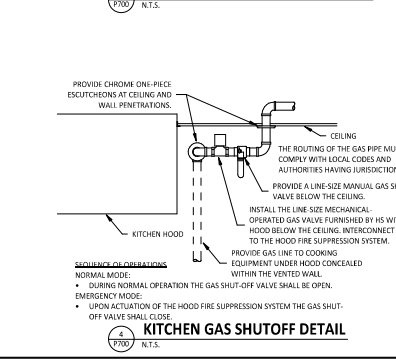
**TRENCH DRAIN DETAIL**  
15 P700 N.T.S.



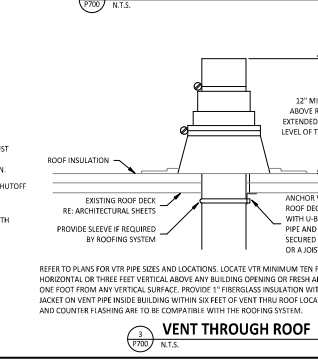
**KITCHEN GAS EQUIPMENT DETAIL**  
7 P700 N.T.S.



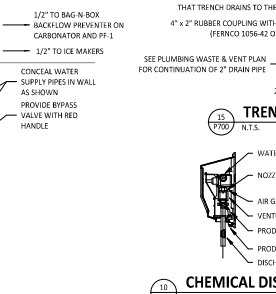
**RICE COOKER GAS CONNECTION DETAIL**  
6 P700 N.T.S.



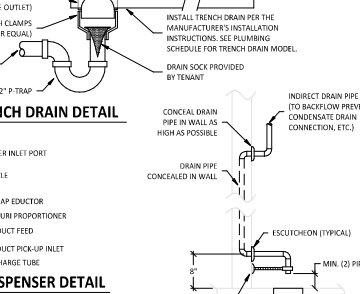
**KITCHEN GAS SHUTOFF DETAIL**  
4 P700 N.T.S.



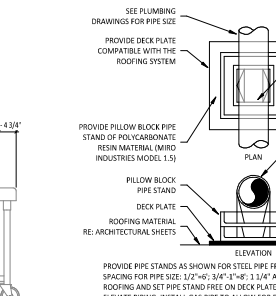
**VENT THROUGH ROOF**  
3 P700 N.T.S.



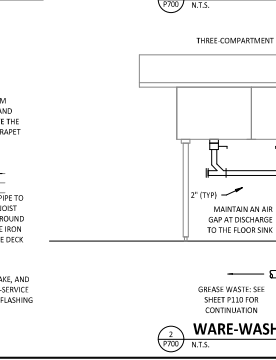
**CHEMICAL DISPENSER DETAIL**  
18 P700 N.T.S.



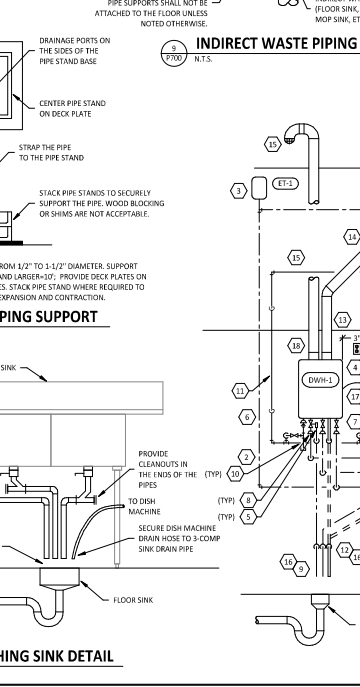
**INDIRECT WASTE PIPING DETAIL**  
9 P700 N.T.S.



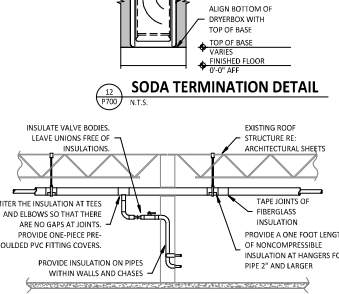
**ROOFTOP PIPING SUPPORT**  
5 P700 N.T.S.



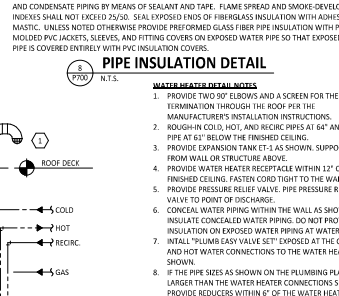
**WARE-WASHING SINK DETAIL**  
2 P700 N.T.S.



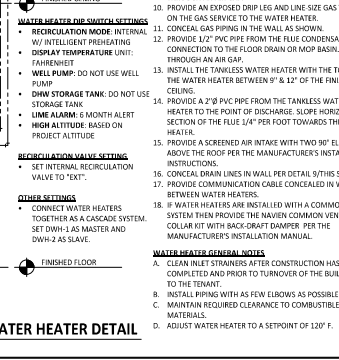
**WATER HEATER DETAIL**  
1 P700 N.T.S.



**SODA TERMINATION DETAIL**  
12 P700 N.T.S.



**PIPE INSULATION DETAIL**  
8 P700 N.T.S.



**NATIONAL ENGINEERING**  
4818 Truman Blvd., Suite 200, Orlando, FL 32810  
Phone: (407) 594-9117 Fax: (407) 594-9110  
Contact: Andy Janosik (407) 594-9110  
ajanosik@nationaleng.com

**CHIPOTLE MEXICAN GRILL**  
FOR CONSTRUCTION  
COPYRIGHT 2020  
THIS DRAWING IS AN INSTRUMENT OF SERVICE AND IS THE PROPERTY OF NATIONAL ENGINEERING. IT IS TO BE USED ONLY FOR THE PROJECT AND SITE SPECIFICALLY IDENTIFIED HEREIN. NO PART OF THIS DRAWING OR ANY INFORMATION CONTAINED HEREIN IS TO BE REPRODUCED OR TRANSMITTED IN ANY FORM OR BY ANY MEANS, ELECTRONIC OR MECHANICAL, WITHOUT THE WRITTEN PERMISSION OF NATIONAL ENGINEERING.

STORE NO. 4496  
NORTH NAPLES  
NVC IMMOKALEE RD & COLLIER BLVD.  
NAPLES, FL 34119

Issue Number	DATE	DESCRIPTION
01	04.04.2024	PERMIT SET
02	11.26.2024	BID SET
03	08.08.2025	CONSTRUCTION SET

**PLUMBING DETAILS**  
P700



**LIGHTING CONTROL PANEL SCHEDULE: LCP**

RELAY	PANEL	CIRCUIT	AREA SERVED	CONTROL	TIME ON	TIME OFF	NOTES
R1	A	32	KITCHEN A	TIMELOCK	7:30:00 AM	12:00:00 AM	SINGLE POLE (NC)
R2	A	32	KITCHEN B	TIMELOCK	7:30:00 AM	12:00:00 AM	SINGLE POLE (NC)
R3	A	30	SPARE	TIMELOCK	10:00:00 AM	12:00:00 AM	SINGLE POLE (NC)
R4	A	30	DINING ROOM A	TIMELOCK	10:00:00 AM	12:00:00 AM	SINGLE POLE (NC)
R5	A	30	DINING ROOM B	TIMELOCK	10:00:00 AM	12:00:00 AM	SINGLE POLE (NC)
R6	A	28	RESTROOM EXHAUST FAN	TIMELOCK	7:00:00 AM	12:00:00 AM	SINGLE POLE (NC)
R7	A	42	EXT. LIGHTING/SIGNAGE	TIMELOCK	SUNSET - 1 HR	12:00:00 AM	SINGLE POLE (NC)

**LIGHTING CONTROL COMPONENTS SCHEDULE**

DESCRIPTION	QUANTITY	FURNISHED BY	INSTALLED BY	MANUFACTURER	MODEL	REMARKS
RIGHT LIGHTING CONTROL PANEL	1	TLS	GC	ACLUITY	ASP INTENCOR NLT 8PWR M/VOLT HLK FM DTC OPTILE	8 RELAY PANEL FOR DIMMING CONTROL WITH FLUSH MOUNT ENCLOSURE, AND DIGITAL TIME CLOCK
WALL-MOUNTED OVERVERRIDE SWITCH (4 CHANNEL)	1	TLS	GC	ACLUITY	#PDDMA-4P WH	SEE LIGHTING CONTROL DIAGRAM FOR SWITCH CONFIGURATION
WALL-MOUNTED DIMMER SWITCH	2	TLS	GC	COOPFR	SAL6P-W	SLIDE DIMMER COMPATIBLE WITH UP TO 300W LED LIGHTING. SET AT 50%. IF DINING ROOM LIGHTS FUCCER AT THIS DIMMER SETTING THEN GC SHALL PROVIDE LUTRON DVC-25SP DIMMER AS REPLACEMENT.
WALL-MOUNTED LINE VOLTAGE OCCUPANCY SENSOR	3	TLS	GC	HUBFELL	HMATS 1-A-WH	WHITE DUAL TERMINAL COY SENSIF RELAY WITH 1 BUTTON AND NEUTRAL WIRING

**ELECTRICAL LIGHTING PLAN NOTES**

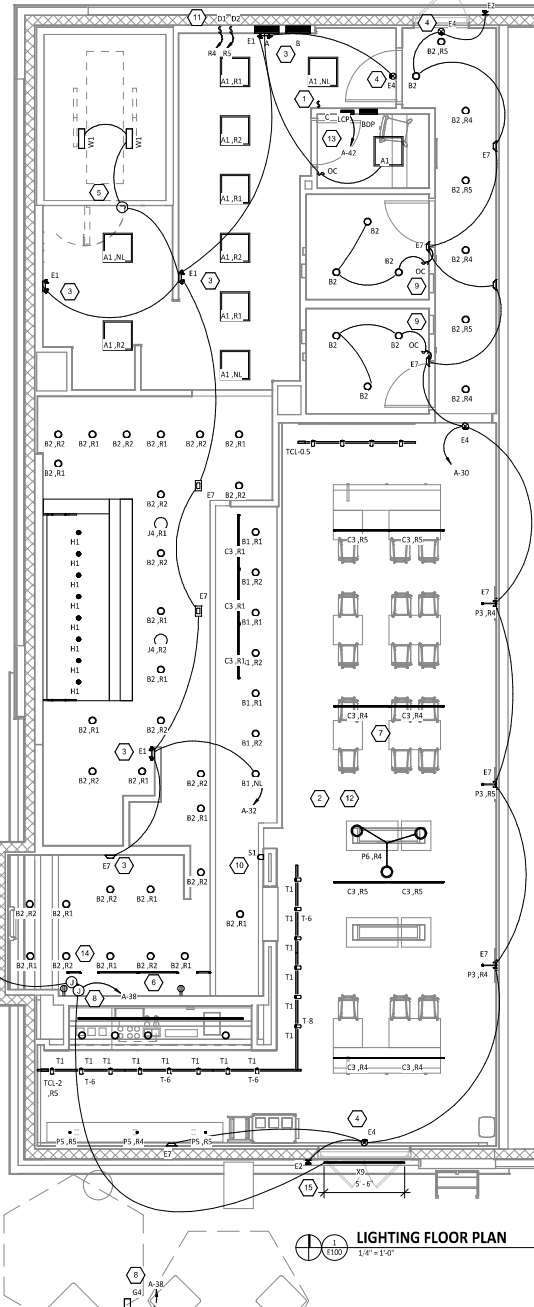
- INSTALL WALL-MOUNTED LIGHTING OVERVERRIDE SWITCH AND CONNECT TO LCP AS SHOWN IN DETAIL 6/710
- FOR UNCIRCULATED LIGHT FIXTURES, CONNECT TO RELAY CIRCUIT INDICATED NEXT TO THE FIXTURE TAG THROUGH THE LIGHTING CONTROL PANEL (LCP) UNLESS NOTED OTHERWISE
- WALL MOUNT THE EMERGENCY LIGHT FIXTURE AT 6" BELOW THE CEILING UNLESS NOTED OTHERWISE
- VERIFY MOUNTING HEIGHT OF EXIT SIGN PRIOR TO ROUGH-IN. EXIT SIGN MUST BE VISIBLE FROM AREA SERVED AFTER BUILDING SYSTEMS HAVE BEEN INSTALLED. SEE ARCHITECTURAL ELEVATIONS FOR FURTHER INFORMATION.
- INSTALL LIGHT FIXTURES FURNISHED WITH THE WALK-IN COOLER. PROVIDE UNSWITCHED CONDUCTOR FROM LIGHTING CIRCUIT TO WALK-IN COOLER LIGHTING BOX AND FROM A BOX TO THE LIGHT FIXTURES AS SHOWN. CONDUIT BETWEEN LIGHT FIXTURES SHALL BE ROUTED ON THE INTERIOR OF THE WALK-IN COOLER. SEAL INTERIOR AND EXTERIOR OF CONDUITS WHERE THEY PASS THROUGH THE WALK-IN COOLER ENVELOPE PER THE NEED
- PROVIDE (2) 6FC RECEPTACLES FOR UNDERSHELF LIGHTING AS SHOWN. CONNECT TO SWITCHED LEG OF THE KITCHEN LIGHTING CIRCUIT. SEE ELEVATIONS ON SHEET E700 FOR RECEPTACLE LOCATIONS, HEIGHTS, AND CIRCUITING. INSTALL RECEPTACLES IN A HORIZONTAL ORIENTATION.
- PROVIDE UNISTRUT AS SHOWN ON THE ARCHITECTURAL RCP PER THE ARCHITECTURAL UNISTRUT DETAIL TYPICAL.
- CONNECT EXTERIOR LIGHTING CIRCUIT TO CIRCUIT SHOWN THROUGH THE EXTERIOR LIGHTING CONTACTOR PANEL PER DETAIL 6/710.
- INSTALL WALL-MOUNTED OCCUPANCY SENSOR FURNISHED BY LIGHTING SUPPLIER AT 42" AFF. ADJUST OCCUPANCY SENSOR TO PROVIDE AUTOMATIC ON/AUTOMATIC OFF OPERATION WITH A FIXED TIMER OF 30 MINUTES AND WITH BOTH THE PASSIVE INFRARED AND ULTRASONIC SENSORS ENABLED.
- INSTALL CHIME/STROBE FURNISHED WITH VEHICLE DETECTION SYSTEM ON WALL 12" BELOW CEILING AND CONNECT TO VEHICLE DETECTOR SYSTEM PER THE MANUFACTURER'S INSTALLATION INSTRUCTIONS.
- INSTALL WALL-MOUNTED DIMMERS ABOVE PANEL BOARDS 6" ABOVE LAV-IN CEILING FOR CONTROL OF DINING ROOM OVERHEAD STRIP LED LIGHTS. CONNECT DIMMERS TO RELAYS SHOWN THROUGH THE LIGHTING CONTROL PANEL. SET DIMMERS AT 50%.
- CONNECT DINING ROOM (RELAY CIRCUITS R4, R5, AND R6) OVERHEAD STRIP LED LIGHTS TO THE RELAY INDICATED THROUGH THE CORRESPONDING WALL-MOUNTED DIMMER INSTALLED ABOVE THE PANEL BOARDS.
- INSTALL LIGHTING CONTROL SYSTEM PER DETAIL 6/710.
- INSTALL LED DRIVERS FURNISHED WITH THE X9 LED STRIP LIGHTS ON WALL 6" ABOVE THE CEILING IN AN ACCESSIBLE LOCATION. PROVIDE LOW VOLTAGE WIRING FROM LED DRIVER TO THE X9 LIGHT FIXTURES AS SHOWN.
- INSTALL E2 REMOTE EMERGENCY LIGHT TO BOTTOM OF CANOPY. CONCEAL LOW VOLTAGE WIRING FROM EXIT SIGN TO REMOTE EMERGENCY LIGHT.

**LIGHTING FIXTURE SCHEDULE**

TAG	QUANTITY	TYPE	MOUNT	FURNISHED BY	INSTALLED BY	MANUFACTURER	MODEL	LAMP(S)	VOLTS	WATTS	SPECIAL REQUIREMENTS
A1	10	2x2 LED LENSIF TROFFER	LAV-IN	TLS	GC	NORA LIGHTING	NPD8L-622/334 W	(1) 3000K LED	120	30	COMPATIBLE WITH 20% DIMMING. FACTORY LOCKED TO 3000K
B1	7	RECESSED 6IN CAN LIGHT	CEILING	TLS	GC	NORA LIGHTING	NHC-6624TFL with NTKM 57W/NA1 Trim	(1) 17W ECOSTORY ECO-PAR38C 17U/24-27K-25D LED (25° - 2700K) W/ GU 24 BASE	120	17	
B2	42	RECESSED 6IN CAN LIGHT W/ LED TRIM	CEILING	TLS	GC	NORA LIGHTING	NHC-6624TFL with NHCRC-65130W/W LED TRIM	INTEGRAL 3000K LED	120	17	LED TRIM FURNISHED WITH GU24 SOCKET ADAPTER
B3	4	RECESSED 6IN CAN LIGHT W/ BLACK LED TRIM	CEILING	TLS	GC	NORA LIGHTING	NHC-6624TFL with NHCRC-65130W/W LED TRIM	INTEGRAL 3000K LED	120	12	BLACK LED TRIM FURNISHED WITH GU24 SOCKET ADAPTER
C1	2	LOW PROFILE LED - 1 FT	SURFACE	TLS	GC	HERA LIGHTING	HL/LED/122/W	INTEGRAL 3000K LED	120	5	FURNISHED WITH COVERS, CONNECTORS, AND ONE HARDWARE BOX OR CORD/PLUG PER SECTION
C2	2	LOW PROFILE LED - 3 FT	SURFACE	TLS	GC	HERA LIGHTING	HL/LED/34/W	INTEGRAL 3000K LED	120	12	FURNISHED WITH COVERS, CONNECTORS, AND ONE HARDWARE BOX OR CORD/PLUG PER SECTION
C3	14	LOW PROFILE LED - 4 FT	SURFACE	TLS	GC	HERA LIGHTING	HL/LED/46/W	INTEGRAL 3000K LED	120	15	FURNISHED WITH COVERS, CONNECTORS, AND ONE HARDWARE BOX OR CORD/PLUG PER SECTION
E1	4	EMERGENCY LIGHT - DUAL HEAD	VARIOUS	TLS	GC	EXTRONIX	LED-90	(2) SPECIAL LED	120	2	90 MINUTE BATTERY BACKUP
E2	2	EXTERIOR REMOTE EMERGENCY LIGHT	VARIOUS	TLS	GC	EXTRONIX	MLED1-B-WP	(1) SPECIAL LED	4	1	LOW VOLTAGE REMOTE EMERGENCY LIGHT POWERED BY REMOTE-CAPABLE EXIT SIGN WITH MOUNTING PLATE
E4	4	WHITE EXIT SIGN WITH EMERGENCY LIGHT - STANDARD RED LETTERS	VARIOUS	TLS	GC	EXTRONIX	CLED-UJWH	(1) SPECIAL LED	120	2	90 MINUTE BATTERY BACKUP WITH INTEGRAL EMERGENCY LIGHT. REMOTE HEAD CARABLE
E7	11	EMERGENCY LIGHT	VARIOUS	TLS	GC	DUAL-LITE	EV2	(2) 1W INTEGRAL LED	120	1	90 MINUTE BATTERY BACKUP
G4	1	PATIO LIGHT POLE	POLE	TLS	GC	RAB Lighting	ALED101W/P54-11-300D POLE	INTEGRAL LED	120	10	SEE PLAN FOR LAMP HEAD CONFIGURATION. REFER TO ARCHITECTURAL SHEETS FOR FINISH AND INSTALLATION DETAIL
H1	8	HOOD LIGHT	SURFACE	THS/TLS	THS	VAPOR PROOF LIGHT FIXTURE FURNISHED WITH HOOD	FURNISHED WITH HOOD	(1) TCP L16A19N1527K	120	23	INSTALL LAMP FURNISHED SEPARATELY BY LIGHTING SUPPLIER
J4	2	DECORATIVE PENDANT	SURFACE	TLS	GC	BARNLIGHT	BLE-C-BRN-100-ASH-SB-K-1-00-NA-0124	GREEN CREATIVE 9A19DHW/927/GU24/R	120	9	WITH BLACK LAMP SHADE, BLACK CORD, AND ONE LAMP HOLDER
P3	3	ACCENT LIGHT - ARTWORK LIGHT FIXTURE	WALL	TLS	GC	HEALTE MFG	H-CW2700-B	1 Medium Base	120	20	
P5	3	PENDANT	SURFACE	TLS	GC	H-LITE MFG	H-LC-91/CB12-91/20W LBL	TCP FG2504027CC0	120	5	ADJUST CORD LENGTH FOR MOUNTING HEIGHT CALLED FOR IN ARCHITECTURAL DRAWINGS
P6	1	DECORATIVE DINING ROOM PENDANT	SURFACE	TLS	GC	BARN LIGHT	BLE-C-JGT-133-35630-3	INTEGRAL LED	120	30	HARDWIRED SET OF (3) HEADS WITH UNIVERSAL CANOPY AND STANDARD BLACK CABLES
S1	1	DRIVE-UP PICK-UP WINDOW CHIME/STROBE	WALL	TLS	GC	FEDERAL SIGNAL	SLMS00B W/ SLM5W-012-024	INTEGRAL	16	0	SET SWITCH A TO "CHIME 3 SINGLE" (1) LED1 AND SWITCH B TO "CHIME 2 SINGLE" (0011)
T1	18	TRACK HEAD	TRACK	TLS	GC	JUNO	RS0L 30K 90CRI PDM WFL BS	INTEGRAL LED BL	120	10	BLACK CYLINDER TRACK HEAD W/ UNIVERSAL 120V TRAC ADAPTER AND WIRE FLOOR BEAM
T-6	4	TRACK (6 FEET)	SURFACE	TLS	GC	JUNO	T 6FT BK	N/A	120	0	SINGLE CIRCUIT, BLACK FINISH
T-8	2	TRACK (8 FEET)	SURFACE	TLS	GC	JUNO	T 8FT BK	N/A	120	0	SINGLE CIRCUIT, BLACK FINISH
TCL-0.5	1	CURRENT LIMITER (60W)	SURFACE	TLS	GC	JUNO	TCLM1 BL W/ TCLCB 0.5A BLCK	N/A	120	0	BLACK CURRENT LIMITING END FEED
TCL-2	1	CURRENT LIMITER (240W)	SURFACE	TLS	GC	JUNO	TCLM1 BL W/ TCLCB 2A BLCK	N/A	120	0	BLACK CURRENT LIMITING END FEED
W1	2	WIC LED FIXTURE	SURFACE	WCS	GC	FURNISHED WITH WIC	FURNISHED WITH WIC	INTEGRAL LED	120	29	WET-RATED COOLER FIXTURE
X9	2	LED CHANNEL LIGHT	SURFACE	TLS	GC	PARADIGM LED	AMC-241D-5 W/ OPAL LENS AND END CAPS	FLEXRS-45-30-67-24	120	varies	FURNISHED W/ REMOTE-MOUNTED NEMA 3R LED DRIVER. SEE PLAN FOR LENGTHS.

**LIGHTING FIXTURE SCHEDULE NOTES**

- FLUORESCENT LAMPS NOT INCLUDED WITH THE FIXTURE AREA TO BE MANUFACTURED BY SYLVANIA UNLESS OTHERWISE NOTED. PHILIPS FLUORESCENT LAMPS WILL BE AN ACCEPTABLE ALTERNATE.
- SEE THE ARCHITECTURAL REFLECTED CEILING PLAN FOR EXACT LIGHT LOCATIONS.
- SEE THE ARCHITECTURAL LIGHTING DETAILS FOR FIXTURE CONSTRUCTION DETAILS.



**LIGHTING FLOOR PLAN**

1/4" = 1'-0"

FOR CONSTRUCTION

**NATIONAL**  
ENGINEERING  
4810 Tamiami Trail, Suite 200 Clearwater, FL 34616  
Phone: (813) 799-1177 Fax: (813) 799-1140  
Contact: Andy Janosik (641) 328-2028  
ajanosik@nationalengineering.com

CHIPPOTLE MEXICAN GRILL, INC.  
PO BOX 181556  
COLLEGE, OH 43129-2046  
TELEPHONE: (614) 312-5182  
INTERNET: WWW.CHIPPOTLE.COM

STORE NO. - 4496  
NORTH NAPLES  
NWC IMMOKALEE RD & COLLIER BLVD.  
NAPLES, FL 34119

Issue/Revised	DATE	BY	DESCRIPTION
	10.04.2024	PFEMT	SET
	11.26.2024	BJD	SET
	01.08.2025		CONSTRUCTION SET

Drawn: \_\_\_\_\_ Checked: \_\_\_\_\_  
All: \_\_\_\_\_ All: \_\_\_\_\_  
Project No: 2301190

ELECTRICAL LIGHTING PLAN  
**E100**

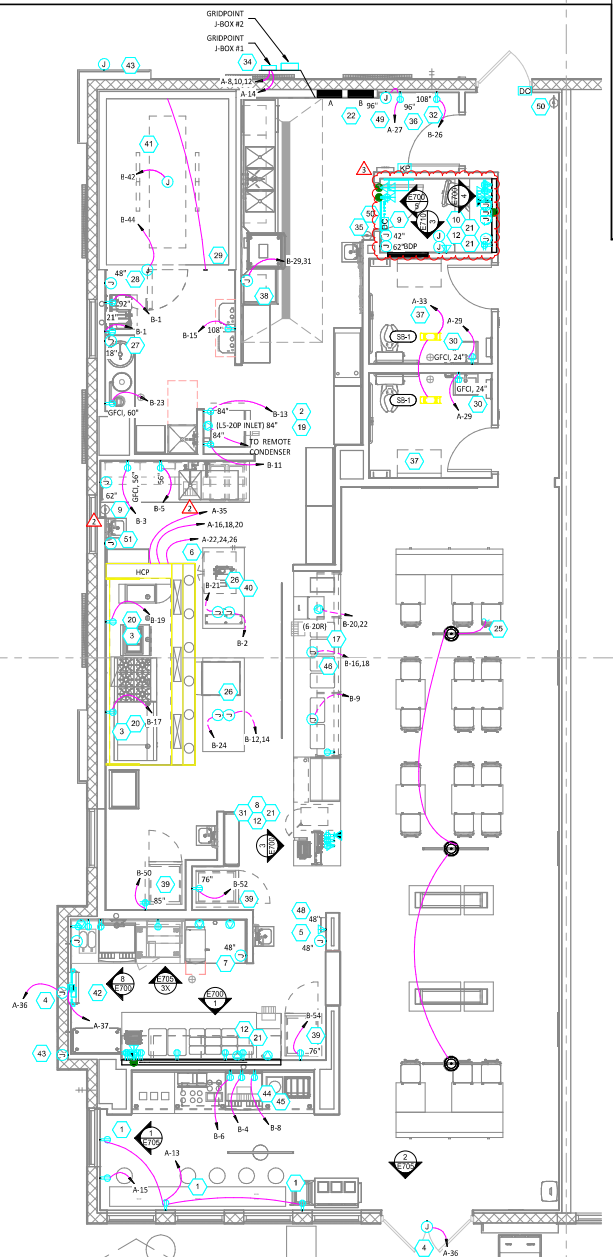
**ELECTRICAL POWER PLAN NOTES**

- 1 SHOW ROOM WINDOW RECEPTACLE. COORDINATE EXACT RECEPTACLE MOUNTING HEIGHT IN THE FIELD. LOCATION SHALL BE IN THE DRYWALL IMMEDIATELY ABOVE THE MAIN STORE-FRONT WINDOW AND AS SHOWN IN THE DINING ROOM ELECTRICAL ELEVATIONS ON SHEET E200.
- 2 ICE MACHINE ELECTRICAL TIE-IN. COORDINATE EXACT LOCATION WITH EQUIPMENT INSTALLER PRIOR TO ROUGH-IN. PROVIDE LS-20P FLANGED INLET WIRED TO THE REMOTE CONDENSER. PROVIDE 48" CORDS, ONE WITH 5-20P END AND ONE WITH 15-20P END, FROM ICE MAKER TO RECEPTACLE AND FLANGED INLET.
- 3 CONNECT RECEPTACLES SERVING EQUIPMENT BELOW THE KITCHEN HOOD TO THE CIRCUITS SHOWN THROUGH THE CONTACTOR INTEGRAL TO THE HOOD CONTROL PANEL. INTEGRAL CONTACTOR SHALL BE INTERLOCKED TO HOOD FIRE PROTECTION SYSTEM SO THAT RECEPTACLES ARE DE-ENERGIZED UPON ACTIVATION OF HOOD FIRE PROTECTION SYSTEM.
- 4 JUNCTION BOX FOR EXTERIOR SIGN LIGHTING. COORDINATE EXACT LOCATION WITH CHIROPTE'S CONSTRUCTION MANAGER AND THE SIGN INSTALLER PRIOR TO ROUGH-IN. CONNECT TO CIRCUIT SHOWN THROUGH THE EXTERIOR LIGHTING CONTACTOR PANEL AS SHOWN IN DETAIL E6710.
- 5 PROVIDE A SINGLE GANG VERTICAL JUNCTION BOX FOR THE KITCHEN EXHAUST SUPPRESSION SYSTEM PULL STATION. PROVIDE A 1/2" CONDUIT FROM THE J-BOX TO 6" ABOVE THE CEILING AND TERMINATE WITH A CONDUIT BUSHING. COORDINATE EXACT LOCATION WITH THE KITCHEN EXHAUST SUPPRESSION SYSTEM INSTALLER AND THE FIRE MARSHALL PRIOR TO ROUGH-IN.
- 6 HOOD CONTROL PANEL AND KITCHEN EXHAUST SUPPRESSION SYSTEM CABINET SHALL BE LOCATED WITHIN THE INTEGRAL HOOD UTILITY CABINET. PROVIDE FINAL ELECTRICAL CONNECTIONS PER THE MANUFACTURER'S INSTALLATION INSTRUCTIONS NECESSARY FOR A COMPLETE AND OPERATIONAL SYSTEM.
- 7 PROVIDE AN EMPTY SINGLE GANG J-BOX FOR VOLUME CONTROLS. INSTALL 16/2 SPEAKER WIRE FURNISHED BY MSS FROM THE J-BOX TO THE AMPLIFIER IN THE OFFICE WITH 3 FEET OF SLACK AT EACH END.
- 8 COORDINATE DATA/POWER RECEPTACLE MOUNTING REQUIREMENTS WITH THE CASE WORK INSTALLER PRIOR TO ROUGH-IN.
- 9 PROVIDE ROUGH-IN FOR LAUNCHPORT AS NOTED. LAUNCHPORT WILL BE FURNISHED AND INSTALLED BY CHIROPTE WITH THE WALLSTATION AT 62" AFF. PROVIDE A 4" X 2-1/2" DEEP OCTAGON J-BOX WITH 1/2" EXTENSION RING AT 62" AFF FOR THE WALLSTATION INSTALLATION WITH A 1" CONDUIT WITH PULL STRING FROM THE J-BOX TO ABOVE THE OFFICE CEILING.
- 10 PROVIDE (2) EMPT 2" CONDUITS WITH PULL STRINGS FROM THE BASE BUILDING'S TELEPHONE AND DATA SERVICE ENTRANCE LOCATIONS TO THE SPACE ABOVE THE OFFICE CEILING. TERMINATE WITH CONDUIT BUSHING.
- 11 PROVIDE A SUITABLE LENGTH OF LIQUID-TIGHT CONDUIT TO THE EXHAUST FAN EF-1 TO ALLOW THE EXHAUST FAN TO HINGE COMPLETELY OPEN WHEN THE VIBROGUARD SYSTEM IS INSTALLED.
- 12 AFTER THE FAX LINE, POS, AND OFFICE EQUIPMENT IS INSTALLED PROVIDE CHILDPROOF RECEPTACLE COVERS ON UNUSED IG RECEPTACLES AT THE FAX LINE, POS, AND OFFICE.
- 13 PROVIDE ONE PHASE, ONE NEUTRAL, AND ONE GROUND CONDUCTOR FROM THE ICE MAKER TO THE REMOTE CONDENSING UNIT. UNIT SHALL HAVE AN INTEGRAL NON FUSED DISCONNECT SWITCH.
- 14 PROVIDE 3" CONDUIT (EXT. IMC, OR RMC) THROUGH ROOF. TERMINATE WITH WEATHERHEAD EVEN WITH TOP OF PARABET FOR FUTURE CELL BOOSTER. SECURE CONDUIT TO STRUCTURE TO SUPPORT FUTURE ANTENNA INSTALLATION. PROVIDE 3/4" X 2" X 10" 3E-HOLE GROUNDING BUSBAR (BURNED BBS1423A OR EQUAL) MOUNTED TO CONDUIT ABOVE ROOF FOR FUTURE CONNECTION OF LIGHTNING ARRESTORS. PROVIDE #2 CU GROUND FROM BUSBAR TO MAIN ELECTRODE GROUNDING CONDUCTOR.
- 15 **NOT USED**
- 16 **NOT USED**
- 17 ROUGH-INS TO SERVE LINE AND POS EQUIPMENT ARE UNDERGROUND. COORDINATE ROUGH-IN REQUIREMENTS AND LOCATIONS WITH EQUIPMENT MANUFACTURER PRIOR TO ROUGH-IN.
- 18 ROOFTOP UNIT SHALL HAVE AN INTEGRAL UNIT-MOUNTED GFCI RECEPTACLE. PROVIDE CONNECTION TO CIRCUIT SHOWN.
- 19 ICE MAKER RECEPTACLES SHALL BE CONCEALED BEHIND THE ICE MAKER. COORDINATE LOCATION WITH ACTUAL WIDTH OF ICE MAKER.
- 20 PROVIDE VERTICAL METAL DIE CAST WEATHERPROOF WHILE IN USE OUTLET COVER ON RECEPTACLES AT COOK LINE. COVER SHALL BE INTERMATIC WP1030MXD FOR SINGLE GANG BOXES AND WP1030MXD FOR DOUBLE GANG BOXES. NO SUBSTITUTIONS SHALL BE ACCEPTED.
- 21 LABEL BATTERY-PROTECTED RECEPTACLES "BATTERY-PROTECTED; DISCONNECT AT PANEL BDP".
- 22 LABEL MAIN DISCONNECT SWITCH AND PANEL A "WARNING: BATTERY-PROTECTED RECEPTACLES IN USE. DISCONNECT AT PANEL BDP".
- 23 **NOT USED**
- 24 **NOT USED**
- 25 CONNECT RESTROOM EXHAUST FAN TO CIRCUIT SHOWN THROUGH THE LIGHTING CONTROL PANEL (LCP).
- 26 INSTALL 16/2 SPEAKER WIRE FURNISHED BY MSS. INSTALL SPEAKER WIRE BETWEEN SPEAKERS IN THE DINING ROOM AS SHOWN TO THE VOLUME CONTROL IN THE KITCHEN WITH 3 FEET OF SLACK AT EACH END. SEE ARCHITECTURAL PLANS FOR SPEAKER LOCATIONS. ADJUST EACH SPEAKER RAY TAP SETTING TO 81.5 WATTS.
- 27 PROVIDE POWER CONNECTIONS TO SLAND PREP TABLE PER DETAIL 2/E710. PROVIDE GFCI DUPLEX RECEPTACLES IN THREE (3) BOXES INTEGRAL TO PREP TABLES FOR UNDERCOUNTER REFRIGERATOR, HOT HOLDING CABINET, AND GENERAL RECEPTACLE.
- 28 PROVIDE GFCI RECEPTACLE AND J-BOX AND INSTALL CO2 ALARM FURNISHED BY COZAS AS SHOWN IN DETAIL 4/E710.
- 29 PROVIDE J-BOX AND INSTALL CO2 ALARM UNIT FURNISHED BY COZAS AS SHOWN IN DETAIL 4/E710.
- 30 INSTALL WALK-IN COOLER EXTERNAL READOUT THERMOMETER REMOTE PROBE ON WALL OPPOSITE FROM DOOR AS SHOWN. ROUTE TEMPERATURE PROBE WIRE ABOVE WALK IN COOLER CEILING PANELS. SEAL PENETRATIONS THROUGH THE CEILING PANELS, AND SECURE VERTICAL PROBE WIRE TIGHT TO WALLS. NO EXCESS PROBE WIRE SHALL BE WITHIN THE WALK IN COOLER.
- 31 PROVIDE RECEPTACLE FOR RESTROOM HAND SINK FACET AS SHOWN IN DETAIL 3/P700.
- 32 PROVIDE 1" CONDUITS FROM LOW-VOLTAGE J-BOXES AT POS COUNTER CONCEALED WITHIN THE SERVE LINE WIRING CHASE TO THE WALL, THEN CONCEALED WITHIN THE WALL AND ABOVE THE CEILING TO ABOVE THE OFFICE CEILING.
- 33 LABEL RECEPTACLE "DO PROJECT TRAP".
- 34 INSTALL TRANSFORMER FURNISHED BY TLV WITH THE REME HALO AIR PURIFIER IN THE JUNCTION BOX ON THE EXTERIOR OF THE RTU PER DETAIL 6/M700. CONNECT LINE SIDE OF THE TRANSFORMER TO THE RTU SERVICE RECEPTACLE CIRCUIT SO THAT REME HALO RUNS CONTINUOUSLY. CONNECT THE LOW VOLTAGE SIDE OF THE TRANSFORMER TO THE REME HALO USING THE INCLUDED BARREL PLUG.
- 35 PROVIDE (2) 1/2" X 1/2" JUNCTION BOXES (J-BOX #1/J-BOX #2) ON THE WALL ABOVE PANELBOARD 4' BELOW THE LAY-IN CEILING AND MOUNTED ADJACENT TO EACH. PROVIDE CONDUITS AND WIRING SHOWN IN DETAIL 8/E710. TERMS SHALL PROVIDE GRIDPOINT 3 PHASE METER AND TRANSFORMER WITHIN J-BOX #1 AND GRIDPOINT K/M/HUB WITHIN J-BOX #2. SEE GRIDPOINT INSTALLATION SHEET FOR DETAILS.
- 36 PROVIDE HORIZONTAL SINGLE GANG J-BOX BELOW FUTURE GRIDPOINT CONTROLLER LOCATION. PROVIDE CONDUITS AND WIRING AS SHOWN IN DETAIL 8/E710.
- 37 INSTALL WIRE DOOR BUZZER AT 96" AFF. SEE ARCHITECTURAL DOOR EQUIPMENT FOR EQUIPMENT INFORMATION. CONNECT TO CIRCUIT SHOWN THROUGH THE TRANSFORMER FURNISHED WITH THE DOOR BUZZER. PROVIDE WIRING TO A BUFTION ADJACENT TO THE SERVICE DOOR AND CONNECT PER THE MANUFACTURER'S INSTALLATION INSTRUCTIONS.
- 38 CONNECT BATHROOM SANITIZER TO CIRCUIT SHOWN SO THAT IT IS ENERGIZED AT ALL TIMES.
- 39 PROVIDE POWER AND LOW VOLTAGE CONNECTIONS TO DISH SANITIZING MACHINE PER DETAIL 7/E710. CONNECT THE DETERGENT DISPENSER TO THE DISH MACHINE USING THE INCLUDED WIRING HARNESS PER THE MANUFACTURER'S INSTALLATION INSTRUCTIONS.
- 40 PROVIDE RECEPTACLE FOR 2-DOOR AND/OR 1-DOOR REFRIGERATOR WITH GROUND PINS TOWARDS THE BOTTOM OF THE RECEPTACLE.
- 41 PROVIDE ISLAND PREP TABLE FOOD WARMER RECEPTACLE WITH GROUND PIN TOWARDS THE BOTTOM OF THE RECEPTACLE.
- 42 SEAL INTERIOR AND EXTERIOR OF CONDUITS THAT PASS THROUGH THE WALK-IN COOLER ENVELOPE PER THE NEC.
- 43 INSTALL VEHICLE DETECTOR SYSTEM FURNISHED BY T15 SURFACE-MOUNTED ON WALL IN ACCESSIBLE LOCATION ABOVE CEILING AND CONNECT TO STROB/CHIME AND DETECTOR LOOP PER THE MANUFACTURER'S INSTALLATION INSTRUCTIONS. MAKE FINAL ADJUSTMENTS TO LOOP SENSITIVITY PER THE MANUFACTURER'S INSTRUCTIONS. ONCE ALL COMPONENTS ARE INSTALLED AND OPERATIONAL, THE CHIME/STROBE LIGHT SHOULD STAY ILLUMINATED AND THERE SHOULD BE A SINGLE CHIME WHEN A VEHICLE DRIVES OVER OR STOPS ON LOOP.
- 44 PROVIDE 4" SQUARE J-BOX ON EXTERIOR WALL FOR MOUNTING OF EXTERIOR CAMERA. SEE ARCHITECTURAL ELEVATION FOR EXACT HEIGHT AND LOCATION. PROVIDE 3/4" CONDUIT WITH PULLSTRING FROM J-BOX TO ABOVE LAY-IN CEILING AREA IN KITCHEN. J-BOX SHALL NOT BE SURFACE MOUNTED. BASE OF CAMERA SHALL BE MOUNTED FLUSH TO EXTERIOR WALL FINISH.
- 45 PROVIDE CORD AND NEMA 5-20P PLUG FROM UTENSIL COUNTER ICE MAKER, THROUGH UTENSIL COUNTER, TO ICE MAKER RECEPTACLE.
- 46 LABEL UTENSIL COUNTER RECEPTACLES "ICE MAKER/WRM" AND "SODA FOUNTAIN".
- 47 IF NEUTRAL CONDUCTOR IS NOT NEEDED FOR SERVE LINE HOT FOOD SERVER TERMINATE NEUTRAL IN JUNCTION BOX.
- 48 PROVIDE A TWO-CONDUCTOR LOW VOLTAGE WIRE IN 3/4" C. AND (4) #12, #12 N., #12 G. IN 1" C. FROM MAU-1 TO THE HOOD CONTROL PANEL PER THE MANUFACTURER'S INSTALLATION INSTRUCTIONS.
- 49 PROVIDE A HORIZONTAL SINGLE GANG J-BOX FOR DATA JACK AS SHOWN FOR KRONOS TIME CLOCK.
- 50 PROVIDE A RECESSED J-BOX AT 36" AFF FOR THE INSTALLATION OF THE SECURITY SYSTEM KEYPAD WITH A 1/2" CONDUIT TO ABOVE THE LAY-IN CEILING. TERMINATE CONDUIT WITH A CONDUIT BUSHING.
- 51 PROVIDE A J-BOX 6" BELOW THE LAY-IN CEILING WITH A 1/2" CONDUIT ROUTED TO THE HCP. PROVIDE 16 GA 3-CONDUCTOR LOW VOLTAGE WIRE FROM THE HOOD SUPPRESSION SYSTEM GAS VALVE BACK TO THE HCP WITH THE FINAL CONNECTION IN THE HCP BY THE FS INSTALLER. LOW VOLTAGE WIRING FROM THE J-BOX TO THE GAS VALVE SHALL BE CONCEALED WITHIN FLEXIBLE METAL CONDUIT OR LIQUID-TIGHT FLEXIBLE METAL CONDUIT. COORDINATE J-BOX LOCATION WITH GAS VALVE SO THAT CONDUIT IS 12" OR LESS.

**POWER ROOF PLAN**  
1/8" = 1'-0"



**POWER FLOOR PLAN**  
1/4" = 1'-0"



**NATIONAL**  
ENGINEERING  
4815 Turner Blvd., Suite 200, Naples, FL 34109  
Phone: (813) 594-9117 Fax: (813) 593-3430  
Contact: Andy Janosik (613) 328-2028  
ajanosik@nationalengineering.com

FOR CONSTRUCTION

CHIROPOTE  
MEXICAN GRILL  
DEPOT ADDRESS: CHIROPOTE, INC.  
BOX 85556  
COLLEGE BLVD. #4328 2046  
TALLahassee, FL 32310-2046  
INTERNET: WWW.CHIROPOTE.COM

STORE NO.: 4496  
NORTH NAPLES  
NWC IMMOKALEE RD & COLLIER  
BLVD.  
NAPLES, FL 34119

Issue/Revised	DATE	PREPARED BY
	10.08.2024	PERMIT SET
	11.26.2024	BID SET
	01.08.2025	CONSTRUCTION SET

Revisions	DATE	BY
2	01.08.25	CR-01
3	6.20.25	CB/02/DB-2.25

Drawn	Checked
	ALL

Project No: 2301190  
Contract:

**ELECTRICAL POWER PLAN**

**E110**

**ELECTRICAL POWER PLAN NOTES**

1. INSTALL VEHICLE DETECTION LOOP FURNISHED BY TLS PER THE MANUFACTURER'S INSTALLATION INSTRUCTIONS. ALIGN DETECTOR LOOP TO BE CENTERED ON THE PICK-UP WINDOW.
2. CONNECT ANNOUNCE SIGN TO CIRCUIT SHOWN THROUGH THE EXTERIOR LIGHTING CONTACTOR PANEL AS SHOWN IN DETAIL 6/E7A0. SEE DETAIL 2/THIS SHEET FOR SITE CONDUITS.
3. EXISTING EMPTY CONDUIT WITH PULL STRING TO CLEARANCE BAR. SEE DETAIL 2/THIS SHEET FOR SITE CONDUITS.
4. EXISTING 1" SPARE LOW VOLTAGE CONDUIT. SEE DETAIL 2/THIS SHEET FOR MORE INFORMATION.
5. EXISTING 1" SPARE LINE VOLTAGE CONDUIT. SEE DETAIL 2/THIS SHEET FOR MORE INFORMATION.
6. EXISTING INTERIOR J-BOXES AT 11'-0" AFF FOR LINE VOLTAGE AND LOW VOLTAGE SITE WIRING. SEE DETAIL 2/THIS SHEET FOR MORE INFORMATION.

**GENERAL NOTES**

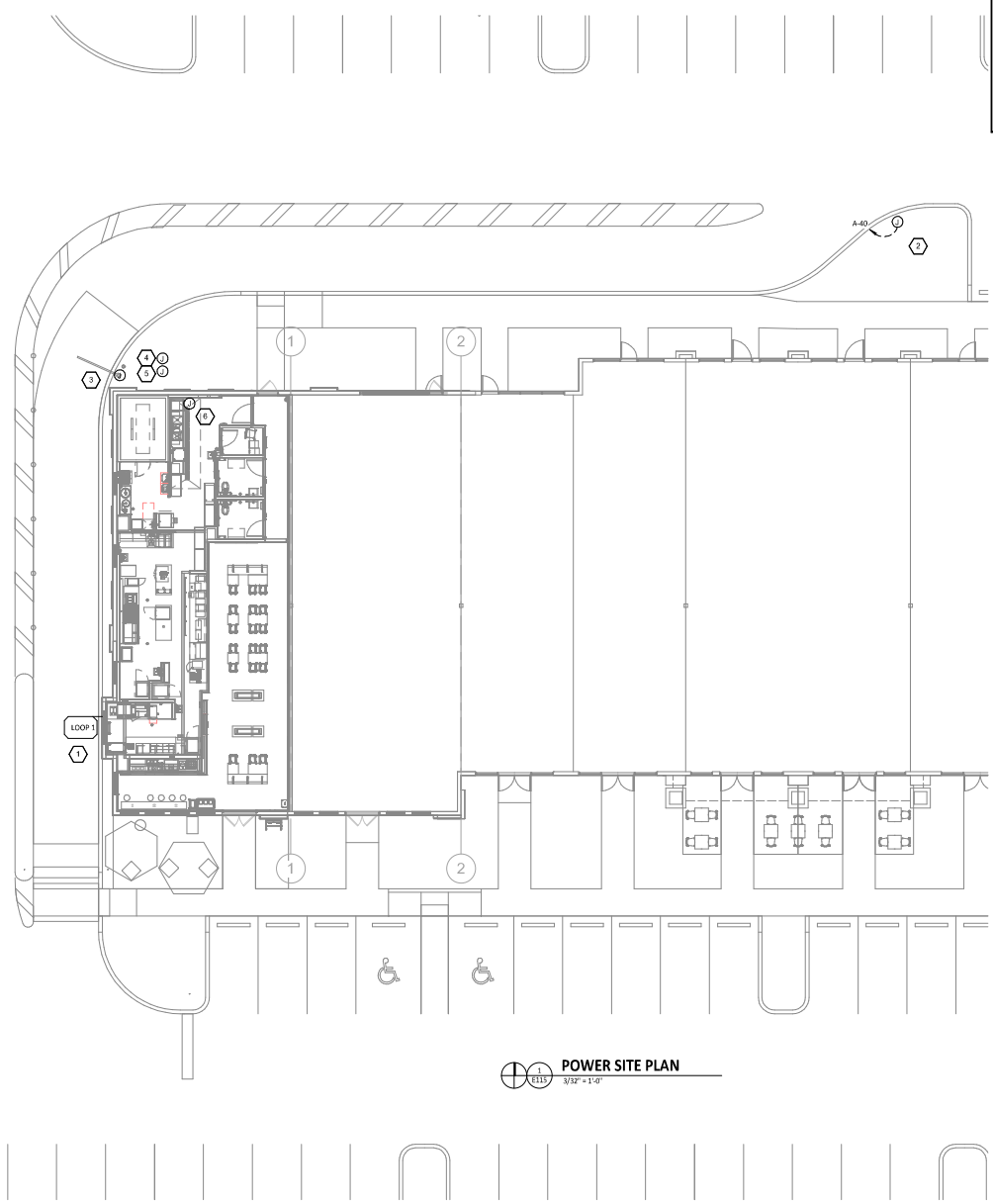
- A. WORK AND MATERIALS SHALL BE CONFORMANT WITH THE REC AND REQUIREMENTS OF THE AHI.
- B. CONDUCTORS AND CONNECTIONS BELOW GRADE, EVEN WHERE WITHIN CONDUITS OR ENCLOSURES, SHALL BE SUITABLE FOR WET LOCATIONS.
- C. PROVIDE PULL STRING IN EMPTY CONDUITS.
- D. SEAL ENDS OF CONDUITS STUBBED UP ABOVE GRADE TO PROTECT FROM THE ELEMENTS.

RESPONSIBILITY	
DEVICE OR CONDUIT	CONNECTIONS OR CONDUCTORS

TAG	DESCRIPTION	DEVICE OR CONDUIT	CONNECTIONS OR CONDUCTORS
①	VEHICLE DETECTOR LOOP - 6" W/ WITH 4 TURNS (EMX PR-46-XX). VERIFY LENGTH OF LEAD IN WIRE PRIOR TO ORDERING TO ALLOW WIRE TO REACH VEHICLE DETECTOR WITHOUT SPLICING. SEE SITE PLAN FOR LOCATIONS.	EXT'G	GC
②	1" CONDUIT FROM VEHICLE DETECTOR LOOP LOCATION TO LOW VOLTAGE J-BOX.	EXT'G	GC
③	1" CONDUIT FROM ANNOUNCE SIGN LOCATION TO LINE VOLTAGE J-BOX. SEE SITE PLAN FOR LOCATION.	EXT'G	GC
④	1" CONDUIT FROM CLEARANCE BAR LOCATION TO LINE VOLTAGE J-BOX. SEE SITE PLAN FOR LOCATION.	EXT'G	N/A
⑤	1" CONDUIT FROM SITE DIRECTIONAL SIGNAGE AND/OR MONUMENT SIGN LOCATIONS TO LINE VOLTAGE J-BOX. SEE SITE PLAN FOR LOCATIONS AND NUMBER OF ROUGH-IN LOCATIONS.	N/A	N/A
⑥	1" CONDUIT FROM SITE LIGHTING FIXTURE(S) TO LINE VOLTAGE J-BOX. SITE LIGHTING FIXTURES CAN BE DAISY-CHAINED.	EXT'G	EXT'G
⑦	LINE VOLTAGE J-BOX - MINIMUM 6"X6"X4" J-BOX ON INTERIOR WALL OF BUILDING AT 11'-0" AFF. SEE SITE PLAN FOR LOCATION.	EXT'G	GC
⑧	LOW VOLTAGE J-BOX - MINIMUM 6"X6"X4" J-BOX ON INTERIOR WALL OF BUILDING AT 11'-0" AFF. SEE SITE PLAN FOR LOCATION.	EXT'G	GC
⑨	1" SPARE CONDUIT FROM LOW VOLTAGE J-BOX TO LANDSCAPING AREA. SEAL CONDUIT FOR FUTURE USE.	EXT'G	GC
⑩	1" SPARE CONDUIT FROM LINE VOLTAGE J-BOX TO LANDSCAPING AREA. SEAL CONDUIT FOR FUTURE USE.	EXT'G	GC

**SITE CONDUIT DETAIL**

①  
E115  
N.T.S.



**POWER SITE PLAN**  
①  
E115  
3/32" = 1'-0"



FOR CONSTRUCTION

COPYRIGHT 2024.  
THIS DRAWING IS AN INSTRUMENT OF SERVICE AND AS SUCH REMAINS THE PROPERTY OF CHIPOTLE MEXICAN GRILL, INC. NO REPRODUCTION OR USE OF THIS DOCUMENT IS PERMITTED AND CAN BE EXTENDED ONLY BY WRITTEN AGREEMENT WITH CHIPOTLE MEXICAN GRILL, INC.



STORE NO. - 4496  
NORTH NAPLES  
NWC IMMOKALEE RD & COLLIER  
BLVD.  
NAPLES, FL 34119

Issue/Revised	DATE	PERMIT SET
	11.26.2024	BID SET
	01.08.2025	CONSTRUCTION SET

Drawn	Checked
AJJ	AJJ

Project No. 23011950  
Contract:

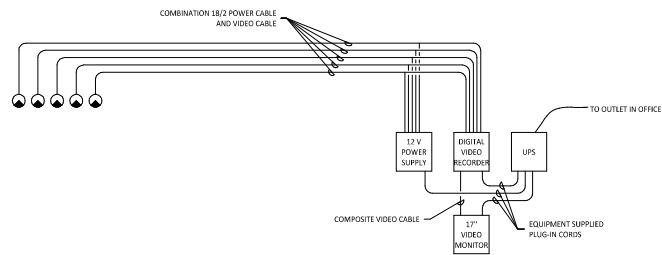
**ELECTRICAL SITE POWER PLAN**

**E115**

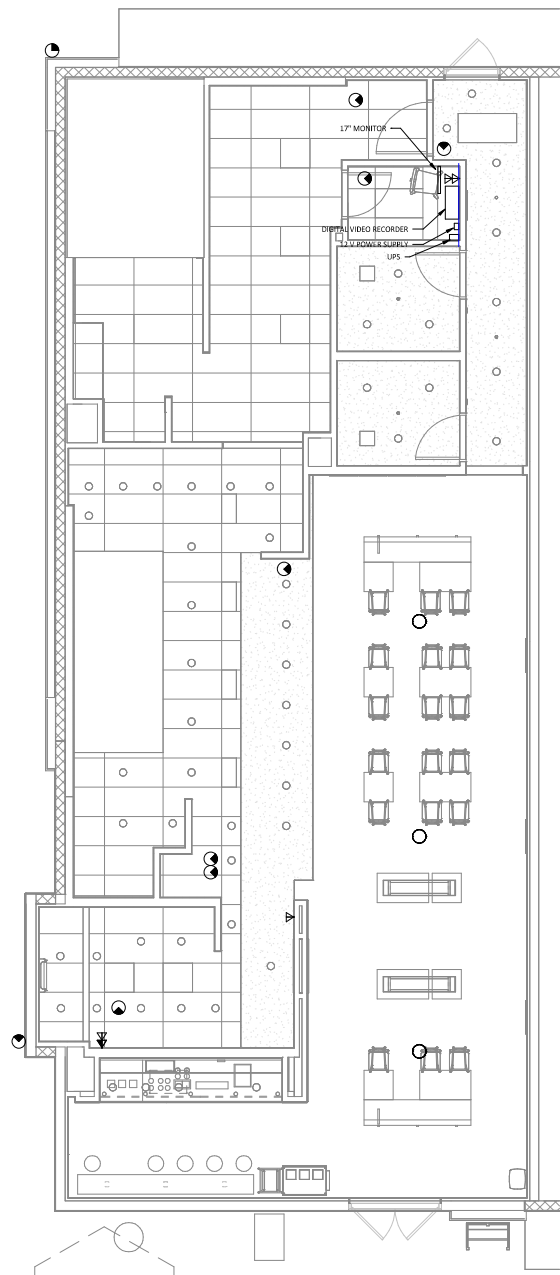
**ELECTRICAL SECURITY CAMERA SYMBOLS**

- CONDUIT CONCEALED ABOVE THE CEILING, IN A WALL, OR IN A RACEWAY
- - - CONDUIT CONCEALED BELOW THE SLAB
- /A/6— HOM-RUN TO PANELBOARD AND CIRCUIT NUMBER SHOWN
- PLAN NOTE: SEE PLAN NOTES LISTED ON THE SAME SHEET FOR NOTE MEANING
- DISCONNECT SWITCH:  
X - SWITCH RATING  
Y - FUSE SIZE (NF = NON-FUSED)  
Z - NUMBER OF POLES
- JUNCTION BOX
- ELECTRIC PANELBOARD
- ⎓ GENERAL PURPOSE 3-POLE SWITCH
- ⎓M MANUAL STARTER WITH PILOT LIGHT
- ⎓DC OCCUPANCY SENSOR ACTIVATED WALL SWITCH (MANUFACTURER: WATSTOPPER)
- NEMA 5-20R DUPLEX RECEPTACLE
- ⦿ SECURITY CAMERA

FOR REFERENCE ONLY: LOW VOLTAGE SUBMITTED UNDER SEPARATE PERMIT. ▲



**SECURITY CAMERA DIAGRAM**  
N.T.S.



**SECURITY CAMERA FLOOR PLAN**  
1/4" = 1'-0"

**NATIONAL ENGINEERING**  
4810 Turner Blvd., Suite 200, Collier, FL 34105  
Phone: (813) 554-9117 Fax: (813) 553-1340  
Contact: Andy Janosik (641) 328-2028  
ajanosik@nationalengineering.com

FOR CONSTRUCTION

COPYRIGHT 2024. THIS DRAWING IS AN INSTRUMENT OF SERVICE AND AS SUCH REMAINS THE PROPERTY OF CHIPOTLE MEXICAN GRILL, INC. NO PARTS OR FOR USE OF THIS DOCUMENT IS LIMITED AND CAN BE EXTENDED ONLY BY WRITTEN AGREEMENT WITH CHIPOTLE MEXICAN GRILL, INC.

CHIPOTLE MEXICAN GRILL, INC.  
PO BOX 181556  
COLLEGE, OH 43129-2556  
TELEPHONE: (614) 233-0192  
INTERNET: WWW.CHIPOTLE.COM

STORE NO. 4496  
NORTH NAPLES  
NWC IMMOKALEE RD & COLLIER BLVD.  
NAPLES, FL 34119

Issue/Revised	DATE	PERMIT SET
	10.04.2024	PERMIT SET
	11.26.2024	BID SET
	01.08.2025	CONSTRUCTION SET

Revisions:	Code	Comments
1	31.21.24	

Drawn:	Checked:
AJJ	AJJ

Project No. 23011950  
Contract:

**ELECT. SECURITY CAMERA PLAN**

**E120**

