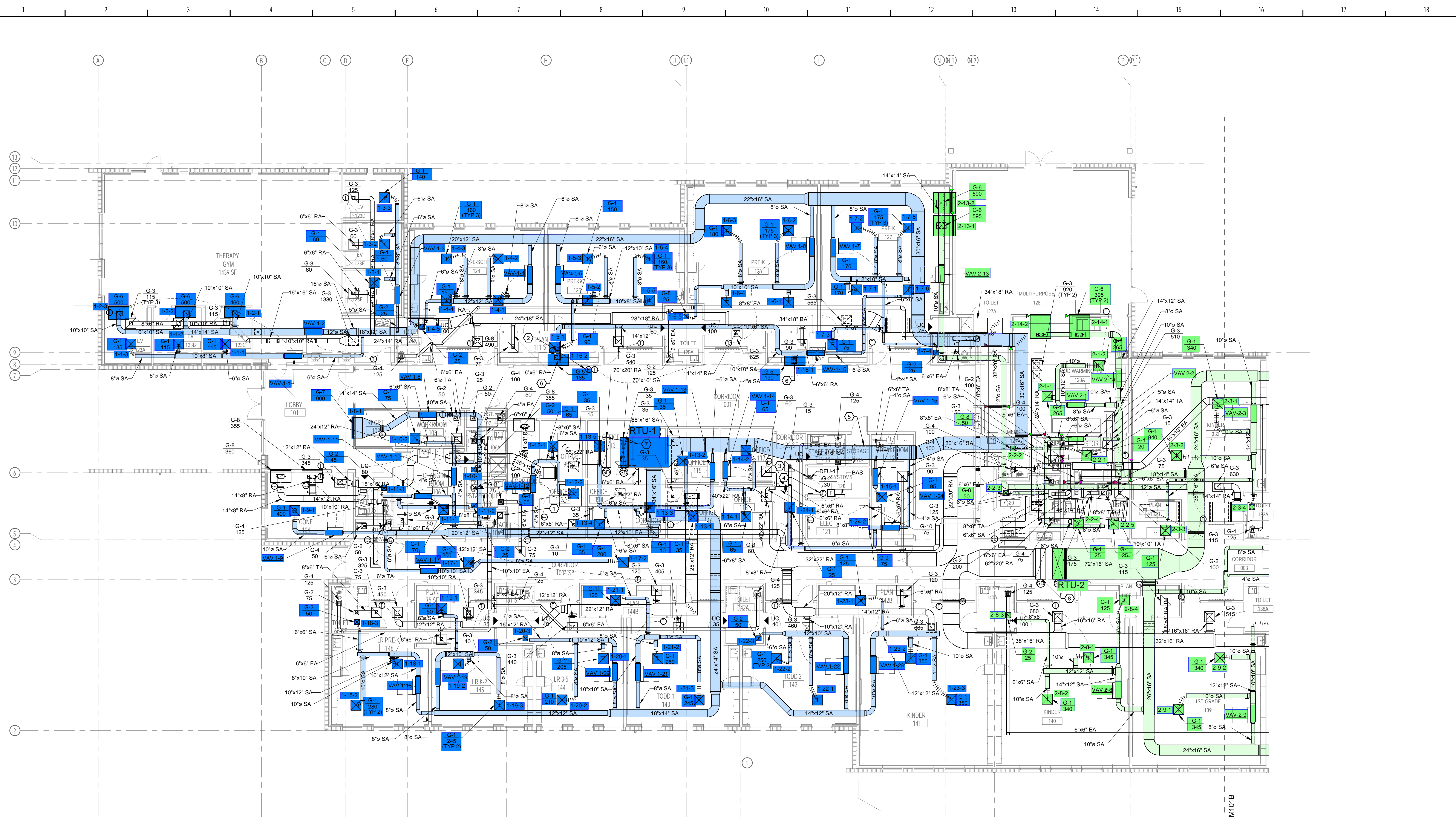
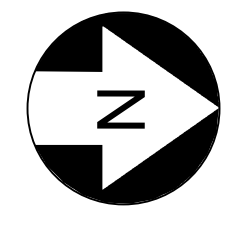


REVISIONS		
MARK	DESCRIPTION	DATE

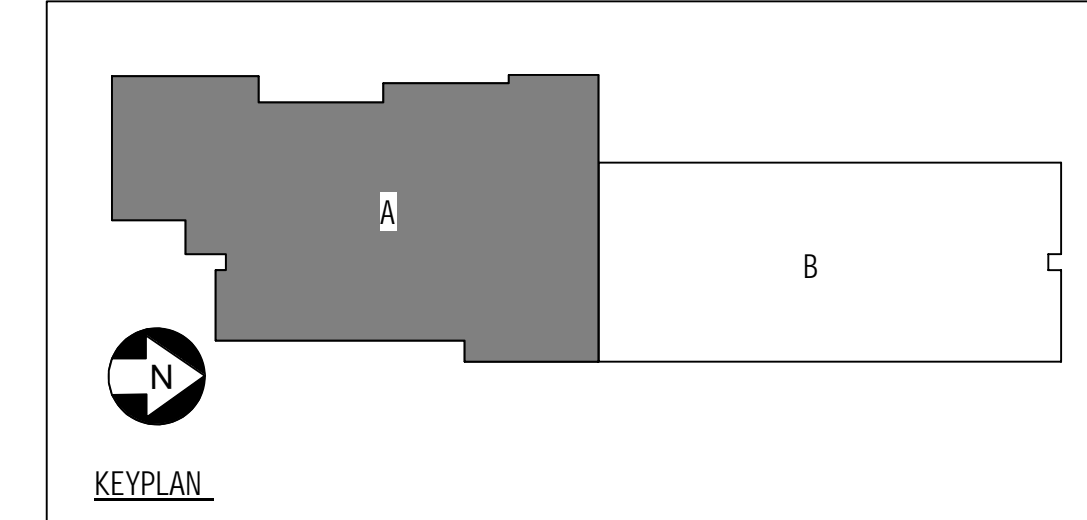


1 FLOOR PLAN - LEVEL 1 AREA A - MECHANICAL
1/8" = 1'-0"



- GENERAL NOTES:
- REFER TO "MECHANICAL GENERAL NOTES" ON DRAWING M001. THEY ARE APPLICABLE TO ALL WORK DESCRIBED ON EVERY MECHANICAL DRAWING.
 - ALL AIR HANDLING SYSTEMS SHALL UTILIZE A FULLY DUCTED RETURN AIR SYSTEM.
 - PROVIDE A VOLUME DAMPER AT EVERY BRANCH DUCT LEADING FROM MAIN TRUNK LINES FOR ALL LOW-PRESSURE DUCTWORK SYSTEMS, WHETHER SHOWN OR NOT ON THE DRAWINGS. NOT ALL DAMPERS MAY BE SHOWN ON THE DRAWINGS FOR CLARITY. DO NOT INSTALL DAMPERS IN MEDIUM PRESSURE DUCTWORK, BETWEEN AHU DISCHARGE AND VARIABLE VOLUME TERMINALS.
 - ALL VOLUME DAMPERS INSTALLED ABOVE GYPSUM BOARD CEILINGS SHALL HAVE A REMOTELY OPERATED DAMPER ACTUATOR. FIELD VERIFY LOCATION OF DEVICES WITH GENERAL CONTRACTOR.
 - FULLY COORDINATE ALL DUCTWORK AND EQUIPMENT WITH CEILING MOUNTED PROJECTION SYSTEMS AND OTHER DEVICES.
 - RETURN GRILLE LOCATIONS AND DUCT LENGTHS HAVE BEEN SELECTED TO MITIGATE NOISE TRANSMISSION BETWEEN ROOMS. CONTRACTOR SHALL NOT INSTALL RETURN GRILLES IN SUCH A WAY THAT NET DUCT LENGTH BETWEEN RETURN GRILLES IS SHORTENED FROM THAT SHOWN ON THE DRAWINGS.
 - CONTRACTOR SHALL COORDINATE VAV ELECTRICAL CLEARANCES, INCLUDING LOW VOLTAGE, WITH ALL CEILING MOUNTED EQUIPMENT IN SHOP DRAWINGS, WHICH INCLUDES BUT IS NOT LIMITED TO LIGHTING, PROJECTORS, SYSTEMS DEVICES, AND FIRE SPRINKLERS. CLEARANCES SHALL BE SIZED AND COORDINATED AS REQUIRED BASED ON THE AWARDED MANUFACTURER VAV BOX REQUIREMENTS. LIGHTS AND EQUIPMENT BELOW THE VAV CLEARANCE, IN THE CEILING, ARE NOT ACCEPTABLE.
 - FULLY COORDINATE ALL REQUIRED ELECTRICAL CLEARANCES FOR DISCONNECTS, APDS AND ELECTRIC DUCT HEATERS PRIOR TO INSTALLATION. THIS MUST BE INCLUDED ON ALL CONTRACTOR SHOP DRAWINGS, PRIOR TO INSTALLATION.

- HEX NOTES:
- 14x14 EA UP TO EF-1 ON ROOF.
 - SPACE HUMIDITY SENSOR ASSOCIATED WITH RTU-1.
 - ROUTE 1" CD FROM DFU-1 TO ROOF. PROVIDE LITTLE GIANT MODEL VCMX-20ULS CONDENSATE PUMP. COORDINATE 120V CONNECTION WITH ELECTRICAL CONTRACTOR.
 - BAS TEMPERATURE SENSOR FOR MONITORING PURPOSES ONLY.
 - DUCT SHALL BE 2" ACOUSTICAL DOUBLEWALL DUCT FROM THIS POINT TO AHU CONNECTION.
 - SMOKE DAMPERS SHALL BE INSTALLED IN THE VERTICAL DROPS MAXIMUM 2' AWAY FROM THE SMOKE BARRIER. SMOKE DAMPERS SHOWN IN HORIZONTAL DUCTWORK FOR CLARITY ONLY.
 - ROUTE FULL SIZE DOUBLE-WALL SUPPLY AND RETURN UP TO RTU-1 ON ROOF. TRANSITION DOUBLE-WALL SUPPLY AND RETURN DOWN FROM RTU-1 TO 72"x16" SA/ 62"x20" RA. PROVIDE SMOOTH RADIUS ELL TO HORIZONTAL.
 - ROUTE FULL SIZE DOUBLE-WALL SUPPLY AND RETURN UP TO RTU-2 ON ROOF. TRANSITION DOUBLE-WALL SUPPLY AND RETURN DOWN FROM RTU-2 TO 72"x16" SA/ 62"x20" RA. PROVIDE SMOOTH RADIUS ELL TO HORIZONTAL.



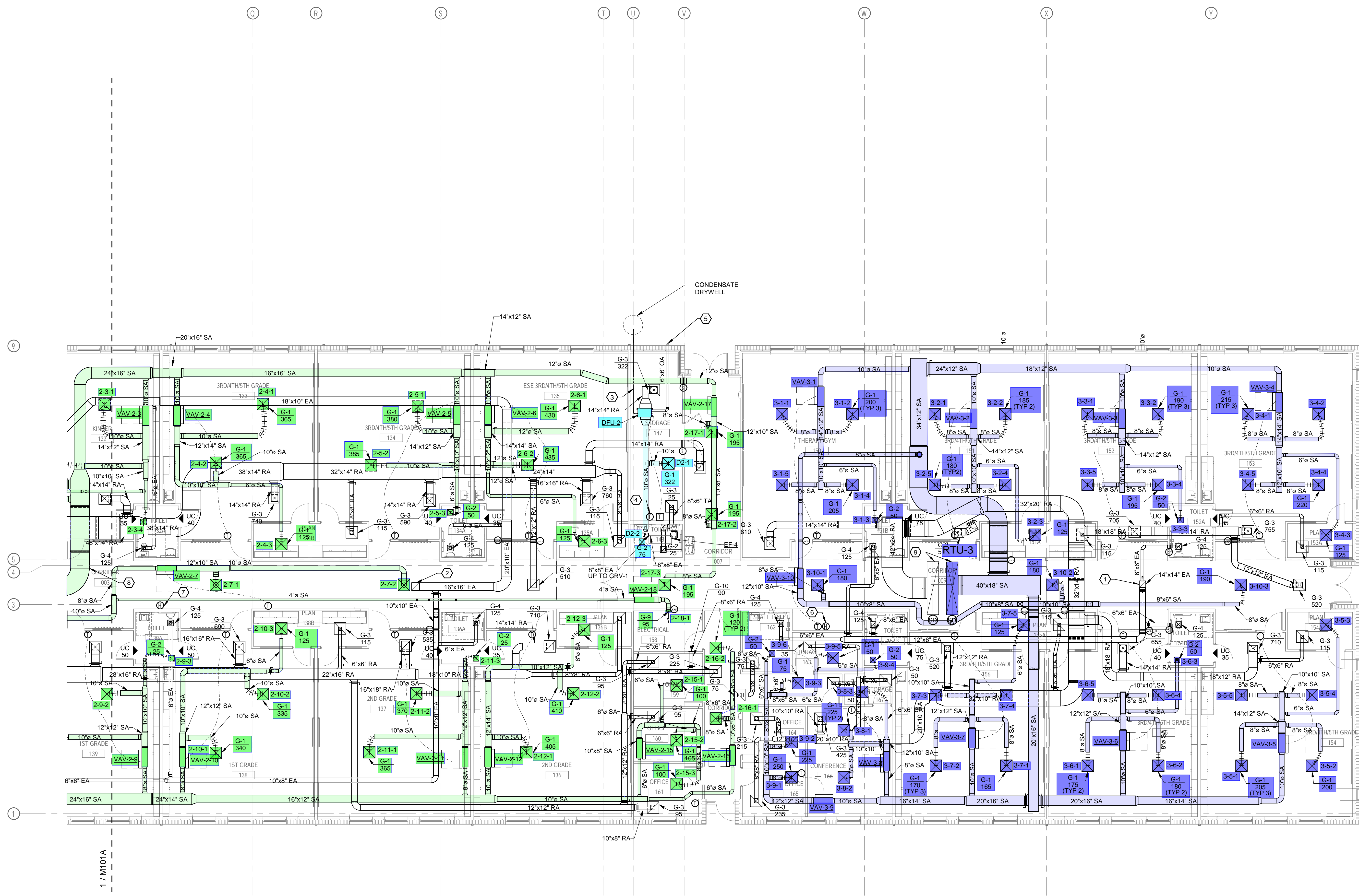
COMM. NO.: 2024903
ISSUE DATE: 12/06/2024
DRAWN BY: JA

FLOOR PLAN - LEVEL 1
AREA A - MECHANICAL

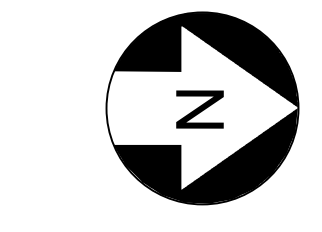
M101A

100% CONSTRUCTION DOCUMENTS

REVISIONS		
MARK	DESCRIPTION	DATE

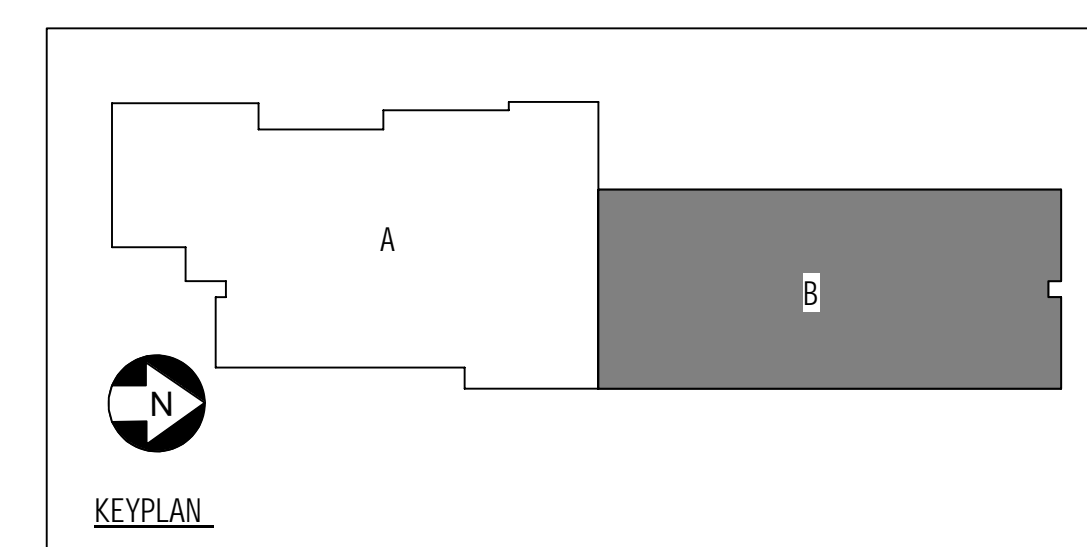


1 FLOOR PLAN - LEVEL 1 AREA B - MECHANICAL
1/8" = 1'-0"



- GENERAL NOTES:**
- REFER TO "MECHANICAL GENERAL NOTES" ON DRAWING M001. THEY ARE APPLICABLE TO ALL WORK DESCRIBED ON EVERY MECHANICAL DRAWING.
 - ALL AIR HANDLING SYSTEMS SHALL UTILIZE A FULLY DUCTED RETURN AIR SYSTEM.
 - PROVIDE A VOLUME DAMPER AT EVERY BRANCH DUCT LEADING FROM MAIN TRUNK LINES FOR ALL LOW-PRESSURE DUCTWORK SYSTEMS, WHETHER SHOWN OR NOT ON THE DRAWINGS. NOT ALL DAMPERS MAY BE SHOWN ON THE DRAWINGS FOR CLARITY. DO NOT INSTALL DAMPERS IN MEDIUM PRESSURE DUCTWORK, BETWEEN AHU DISCHARGE AND VARIABLE VOLUME TERMINALS.
 - ALL VOLUME DAMPERS INSTALLED ABOVE GYPSUM BOARD CEILINGS SHALL HAVE A REMOTELY OPERATED DAMPER ACTUATOR. FIELD VERIFY LOCATION OF DEVICES WITH GENERAL CONTRACTOR.
 - FULLY COORDINATE ALL DUCTWORK AND EQUIPMENT WITH CEILING MOUNTED PROJECTION SYSTEMS AND OTHER DEVICES.
 - RETURN GRILLE LOCATIONS AND DUCT LENGTHS HAVE BEEN SELECTED TO MITIGATE NOISE TRANSMISSION BETWEEN ROOMS. CONTRACTOR SHALL NOT INSTALL RETURN GRILLES IN SUCH A WAY THAT NET DUCT LENGTH BETWEEN RETURN GRILLES IS SHORTENED FROM THAT SHOWN ON THE DRAWINGS.
 - CONTRACTOR SHALL COORDINATE VAV ELECTRICAL CLEARANCES, INCLUDING LOW VOLTAGE, WITH ALL CEILING MOUNTED EQUIPMENT IN SHOP DRAWINGS, WHICH INCLUDES BUT IS NOT LIMITED TO LIGHTING, PROJECTORS, SYSTEMS DEVICES, AND FIRE SPRINKLERS. CLEARANCES SHALL BE SIZED AND COORDINATED AS REQUIRED BASED ON THE AWARDED MANUFACTURER VAV BOX REQUIREMENTS. LIGHTS AND EQUIPMENT BELOW THE VAV CLEARANCE, IN THE CEILING, ARE NOT ACCEPTABLE.
 - FULLY COORDINATE ALL REQUIRED ELECTRICAL CLEARANCES FOR DISCONNECTS, APD'S AND ELECTRIC DUCT HEATERS PRIOR TO INSTALLATION. THIS MUST BE INCLUDED ON ALL CONTRACTOR SHOP DRAWINGS, PRIOR TO INSTALLATION.

- HEX NOTES:**
- 14x14 EA UP TO EF-3 ON ROOF.
 - 16x16 EA UP TO EF-2 ON ROOF.
 - PROVIDE 1" CD DRAINING TO CONDENSATE DRYWELL. ROUTE THE PIPE SO AS TO MAINTAIN A SLOPE OF 1/8" PER LINEAR FOOT. DRAINING TO THIS AREA WILL NOT POSE A NUISANCE.
 - BAS TEMPERATURE SENSOR FOR MONITORING PURPOSES ONLY.
 - 75 CFM 6"Ø INTAKE. PROVIDE WALL CAP WITH DAMPER AND BIRD SCREEN.
 - SPACE HUMIDITY SENSOR ASSOCIATED WITH RTU-3.
 - SPACE HUMIDITY SENSOR ASSOCIATED WITH RTU-2.
 - DUCT SHALL BE 2" ACOUSTICAL DOUBLEWALL DUCT FROM THIS POINT TO AHU CONNECTION.
 - TRANSITION FULL SIZE DOUBLE-WALL RETURN FROM RTU-1 ON ROOF TO 42"x24" RA. TRANSITION DOUBLE-WALL SUPPLY DOWN FROM RTU-1 TO 40"x18" SA. PROVIDE SMOOTH RADIUS ELL TO HORIZONTAL.

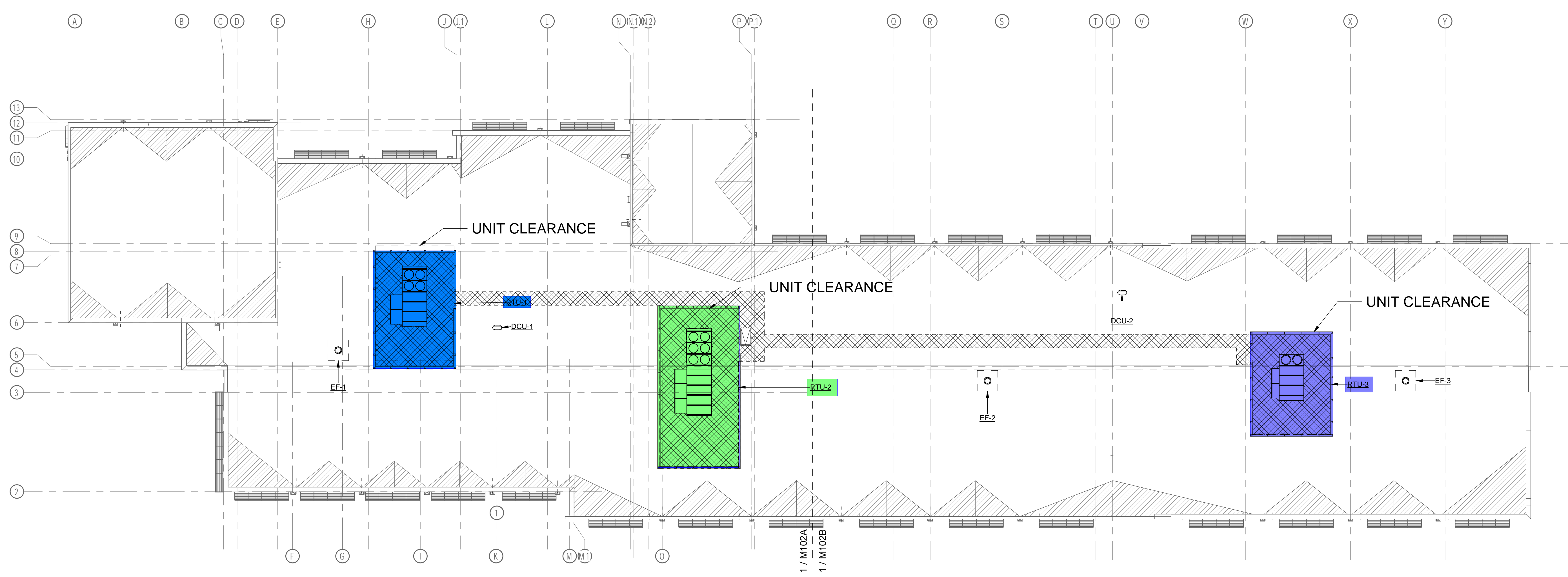


COMM. NO.: 2024903
ISSUE DATE: 12/06/2024
DRAWN BY: JA

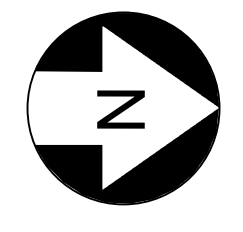
**FLOOR PLAN - LEVEL 1
AREA B - MECHANICAL**

M101B

REVISIONS		
MARK	DESCRIPTION	DATE

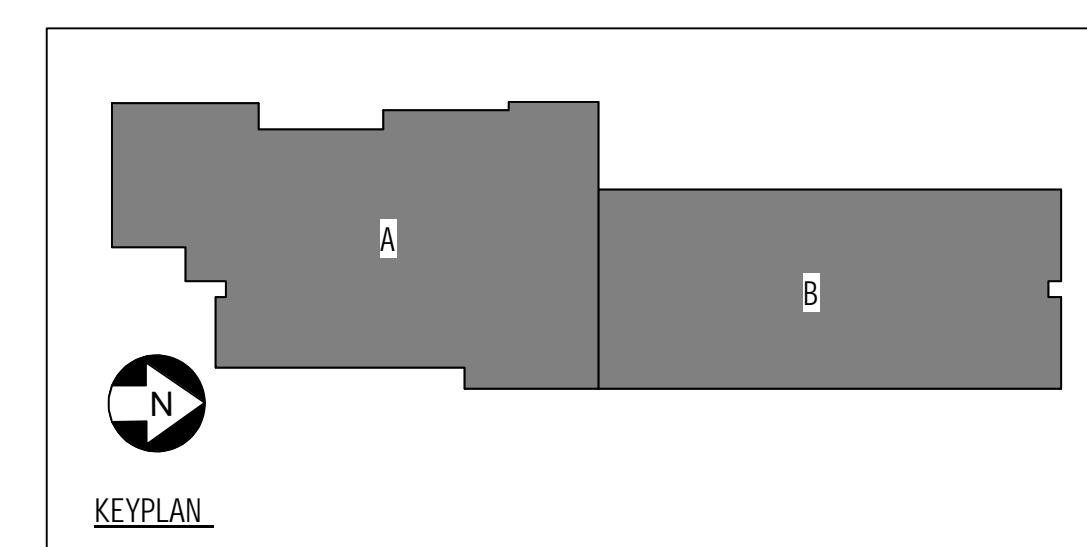


1 ROOF PLAN - OVERALL - MECHANICAL
1/16" = 1'-0"



- GENERAL NOTES:
- REFER TO "MECHANICAL GENERAL NOTES" ON DRAWING M001. THEY ARE APPLICABLE TO ALL WORK DESCRIBED ON EVERY MECHANICAL DRAWING.
 - ALL AIR HANDLING SYSTEMS SHALL UTILIZE A FULLY DUCTED RETURN AIR SYSTEM.
 - PROVIDE A VOLUME DAMPER AT EVERY BRANCH DUCT LEADING FROM MAIN TRUNK LINES FOR ALL LOW-PRESSURE DUCTWORK SYSTEMS, WHETHER SHOWN OR NOT ON THE DRAWINGS. NOT ALL DAMPERS MAY BE SHOWN ON THE DRAWINGS FOR CLARITY. DO NOT INSTALL DAMPERS IN MEDIUM PRESSURE DUCTWORK, BETWEEN AHU DISCHARGE AND VARIABLE VOLUME TERMINALS.
 - ALL VOLUME DAMPERS INSTALLED ABOVE GYPSUM BOARD CEILINGS SHALL HAVE A REMOTELY OPERATED DAMPER ACTUATOR. FIELD VERIFY LOCATION OF DEVICES WITH GENERAL CONTRACTOR.
 - FULLY COORDINATE ALL DUCTWORK AND EQUIPMENT WITH CEILING MOUNTED PROJECTION SYSTEMS AND OTHER DEVICES.
 - RETURN GRILLE LOCATIONS AND DUCT LENGTHS HAVE BEEN SELECTED TO MITIGATE NOISE TRANSMISSION BETWEEN ROOMS. CONTRACTOR SHALL NOT INSTALL RETURN GRILLES IN SUCH A WAY THAT NET DUCT LENGTH BETWEEN RETURN GRILLES IS SHORTENED FROM THAT SHOWN ON THE DRAWINGS.
 - CONTRACTOR SHALL COORDINATE VAV ELECTRICAL CLEARANCES, INCLUDING LOW VOLTAGE, WITH ALL CEILING MOUNTED EQUIPMENT IN SHOP DRAWINGS, WHICH INCLUDES BUT IS NOT LIMITED TO LIGHTING, PROJECTORS, SYSTEMS DEVICES, AND FIRE SPRINKLERS. CLEARANCES SHALL BE SIZED AND COORDINATED AS REQUIRED BASED ON THE AWARDED MANUFACTURER VAV BOX REQUIREMENTS. LIGHTS AND EQUIPMENT BELOW THE VAV CLEARANCE, IN THE CEILING, ARE NOT ACCEPTABLE.
 - FULLY COORDINATE ALL REQUIRED ELECTRICAL CLEARANCES FOR DISCONNECTS, APD'S AND ELECTRIC DUCT HEATERS PRIOR TO INSTALLATION. THIS MUST BE INCLUDED ON ALL CONTRACTOR SHOP DRAWINGS, PRIOR TO INSTALLATION.

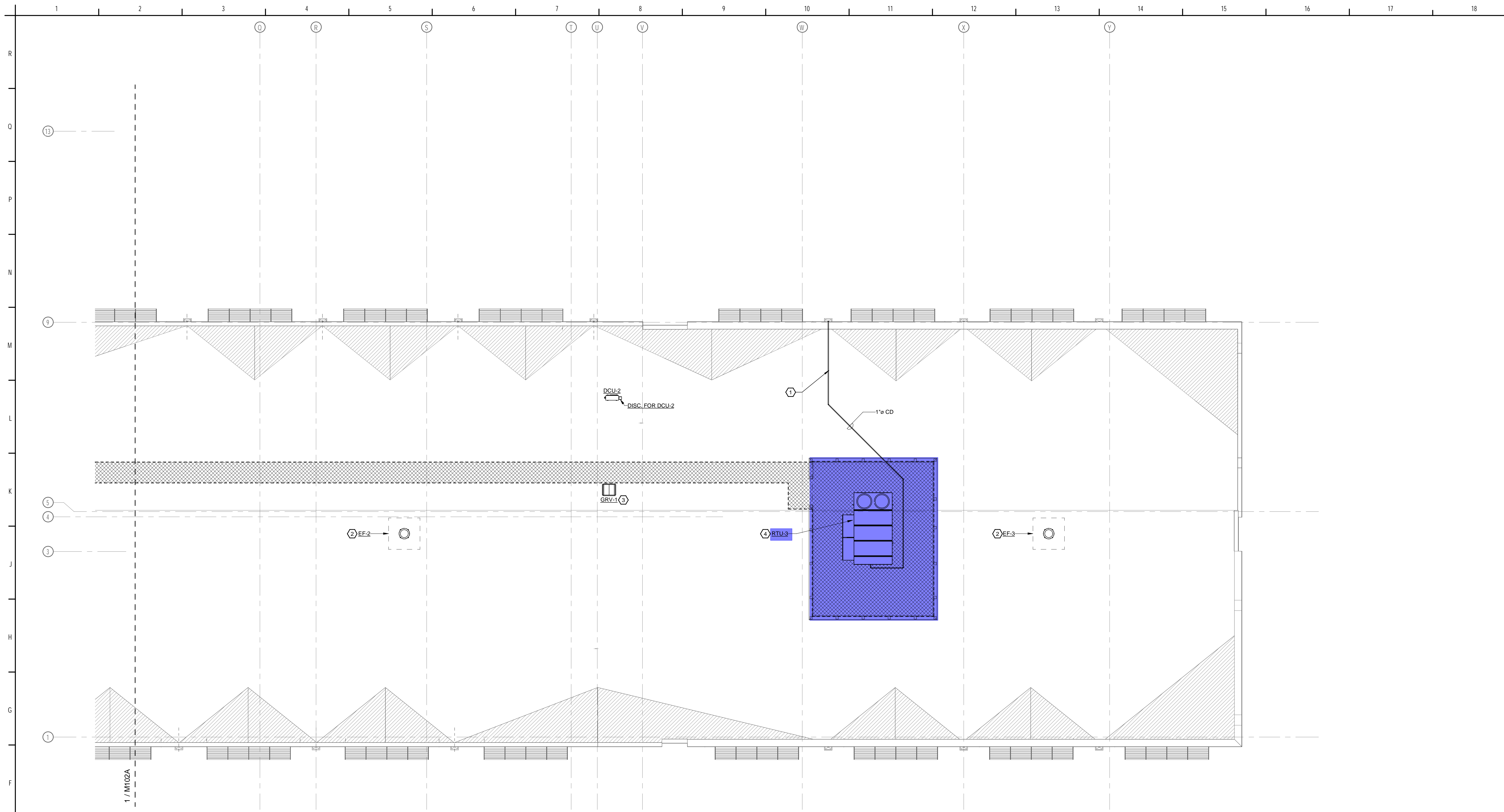
HEX NOTES:



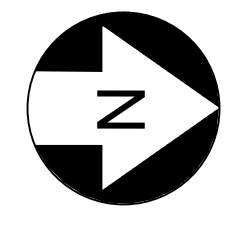
COMM. NO.: 2024903
ISSUE DATE: 12/06/2024
DRAWN BY: JA

ROOF PLAN - OVERALL - MECHANICAL

M102

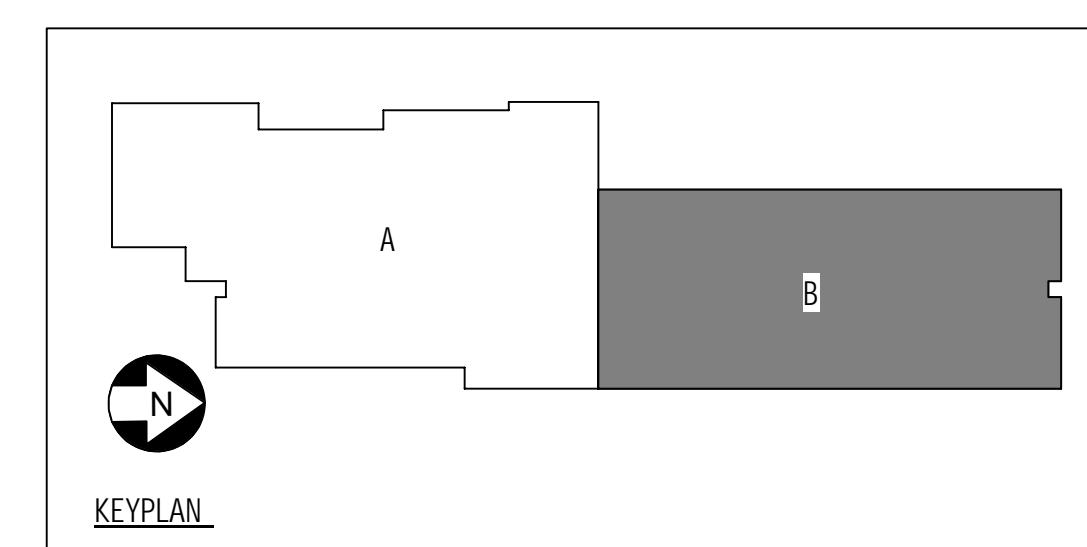


1 ROOF PLAN - AREA B - MECHANICAL
1/8" = 1'-0"



- GENERAL NOTES:**
- REFER TO "MECHANICAL GENERAL NOTES" ON DRAWING M001. THEY ARE APPLICABLE TO ALL WORK DESCRIBED ON EVERY MECHANICAL DRAWING.
 - ALL AIR HANDLING SYSTEMS SHALL UTILIZE A FULLY DUCTED RETURN AIR SYSTEM.
 - PROVIDE A VOLUME DAMPER AT EVERY BRANCH DUCT LEADING FROM MAIN TRUNK LINES FOR ALL LOW-PRESSURE DUCTWORK SYSTEMS, WHETHER SHOWN OR NOT ON THE DRAWINGS. NOT ALL DAMPERS MAY BE SHOWN ON THE DRAWINGS FOR CLARITY. DO NOT INSTALL DAMPERS IN MEDIUM PRESSURE DUCTWORK, BETWEEN AHU DISCHARGE AND VARIABLE VOLUME TERMINALS.
 - ALL VOLUME DAMPERS INSTALLED ABOVE GYPSUM BOARD CEILINGS SHALL HAVE A REMOTELY OPERATED DAMPER ACTUATOR. FIELD VERIFY LOCATION OF DEVICES WITH GENERAL CONTRACTOR.
 - FULLY COORDINATE ALL DUCTWORK AND EQUIPMENT WITH CEILING MOUNTED PROJECTION SYSTEMS AND OTHER DEVICES.
 - RETURN GRILLE LOCATIONS AND DUCT LENGTHS HAVE BEEN SELECTED TO MITIGATE NOISE TRANSMISSION BETWEEN ROOMS. CONTRACTOR SHALL NOT INSTALL RETURN GRILLES IN SUCH A WAY THAT NET DUCT LENGTH BETWEEN RETURN GRILLES IS SHORTENED FROM THAT SHOWN ON THE DRAWINGS.
 - CONTRACTOR SHALL COORDINATE VAV ELECTRICAL CLEARANCES, INCLUDING LOW VOLTAGE, WITH ALL CEILING MOUNTED EQUIPMENT IN SHOP DRAWINGS, WHICH INCLUDES BUT IS NOT LIMITED TO LIGHTING, PROJECTORS, SYSTEMS DEVICES, AND FIRE SPRINKLERS. CLEARANCES SHALL BE SIZED AND COORDINATED AS REQUIRED BASED ON THE AWARDED MANUFACTURER VAV BOX REQUIREMENTS. LIGHTS AND EQUIPMENT BELOW THE VAV CLEARANCE, IN THE CEILING, ARE NOT ACCEPTABLE.
 - FULLY COORDINATE ALL REQUIRED ELECTRICAL CLEARANCES FOR DISCONNECTS, APDS AND ELECTRIC DUCT HEATERS PRIOR TO INSTALLATION. THIS MUST BE INCLUDED ON ALL CONTRACTOR SHOP DRAWINGS, PRIOR TO INSTALLATION.

- HEX NOTES:**
- SLOPE CONDENSATE DRAIN MIN 1/8" PER 12". TERMINATE CONDENSATE DRAIN INTO SCUPPER.
 - MAINTAIN A MINIMUM OF 10' BETWEEN INTAKE OF RTU AND DISCHARGE OF EXHAUST. PROVIDE SLOPED ROOF CURB. COORDINATE EXACT ROOF SLOPE WITH ARCHITECT PRIOR TO ORDERING.
 - MAINTAIN A MINIMUM OF 10' BETWEEN INTAKE OF RTU AND DISCHARGE OF EXHAUST. PROVIDE SLOPED ROOF CURB. COORDINATE EXACT ROOF SLOPE WITH ARCHITECT PRIOR TO ORDERING.
 - COORDINATE EXACT ROOF SLOPE WITH ARCHITECT PRIOR TO ORDERING.



UCP OF CENTRAL FLORIDA
4780 DATA COURT, ORLANDO, FL 32817

UCP OSCEOLA CAMPUS

PROJECT LOCATION:
WEST OAK STREET, KISSIMMEE, FL



200 E. Robinson Street
Suite 300
Orlando, FL 32801
voice: 407-872-3322
www.schenkelshultz.com
Copyright © 2024
SEE FOR POLICY AND INFORMATION

MATERN
Mechanical • Electrical • Plumbing • Fire Protection
Technology • Commissioning • Energy Engineers
130 Candace Drive
Maitland, FL 32751
ENG. BUS. No. EP-14000066 PHONE (407) 740-0300
CERT. OF AUTH. No. 5395 FAX (407) 740-0395
MPE JOB #: 2024-147

REVISIONS		
MARK	DESCRIPTION	DATE

COMM. NO.: 2024903
ISSUE DATE: 12/06/2024
DRAWN BY: JA

ROOF PLAN - AREA B - MECHANICAL

M102B

100% CONSTRUCTION DOCUMENTS