

Z:\Project Directories\11200 - 11289\11231 - Pelican's Reef - Cincinnati\OH-Construction Documents\11231-M100-MECHANICAL-FLOOR-PLAN.dwg - EBS, Plot Date: Dec 09, 2024 - 2:26pm - By: kmeyer
 THESE DRAWINGS AND SPECIFICATIONS ARE NOT AUTHORIZED TO BE USED AS CONTRACT DOCUMENTS. THESE DRAWINGS HAVE BEEN PREPARED TO DEMONSTRATE COMPLIANCE WITH APPLICABLE CODES, AND ARE INTENDED TO PROVIDE THE AUTHORITIES HAVING JURISDICTION WITH INFORMATION TO DETERMINE CODE COMPLIANCE. THE INSTALLING CONTRACTOR IS RESPONSIBLE TO ENSURE THAT MEANS, METHODS, AND MATERIALS USED IN CONSTRUCTION ARE INSTALLED IN ACCORDANCE WITH ANY CONTRACTUAL AGREEMENT THAT MAY EXIST WITH AN OWNER, CONSTRUCTION MANAGER, GENERAL CONTRACTOR, ETC. EBS ACCEPTS NO RESPONSIBILITY OR LIABILITY FOR THE COMPLIANCE OR CONDITION OF EXISTING EQUIPMENT AND WIRING.

DIFFUSER, GRILLE, AND REGISTER SCHEDULE

CALLOUT	DESCRIPTION	FACE SIZE (IN)	INLET SIZE (IN)	MODEL	NOTES
MCD-1	MODULAR CORE DIFFUSER, HORIZONTAL FLOW PATTERN	25 1/2x25 1/2	20x20	TITUS MCD	STEEL, WHITE FINISH

- NOTES FOR ALL AIR DEVICES:**
- PLASTER FRAME WHERE LOCATED IN GYPSUM CEILING
 - AIR DEVICES SHALL BE ALUMINUM IN HIGH MOISTURE AREAS. (RESTROOMS)
 - WHERE AIR DEVICES ARE LOCATED IN A FIRE RATED ASSEMBLY, PROVIDE CEILING RADIATION DAMPERS, FIRE DAMPER, FIRE RATED INSULATION, AS REQUIRED PER CODE.
 - WHERE DAMPER IN DUCTWORK IS NOT ACCESSIBLE, PROVIDE METROPOLITAN AIR TRANSFER (MAT) MODEL RT-150 SERIES CABLE ACTUATED DAMPER DRIVE SYSTEM, OR APPROVED EQUAL.

MECHANICAL SCOPE OF WORK

MECHANICAL SCOPE OF WORK IS TO PROVIDE HVAC EQUIPMENT TO AN EXISTING RESTAURANT.

CODES & STANDARDS REFERENCED

- 2024 OHIO MECHANICAL CODE
- 2024 OHIO BUILDING CODE
- ASHRAE 90.1-2019

HVAC DESIGN CONDITIONS

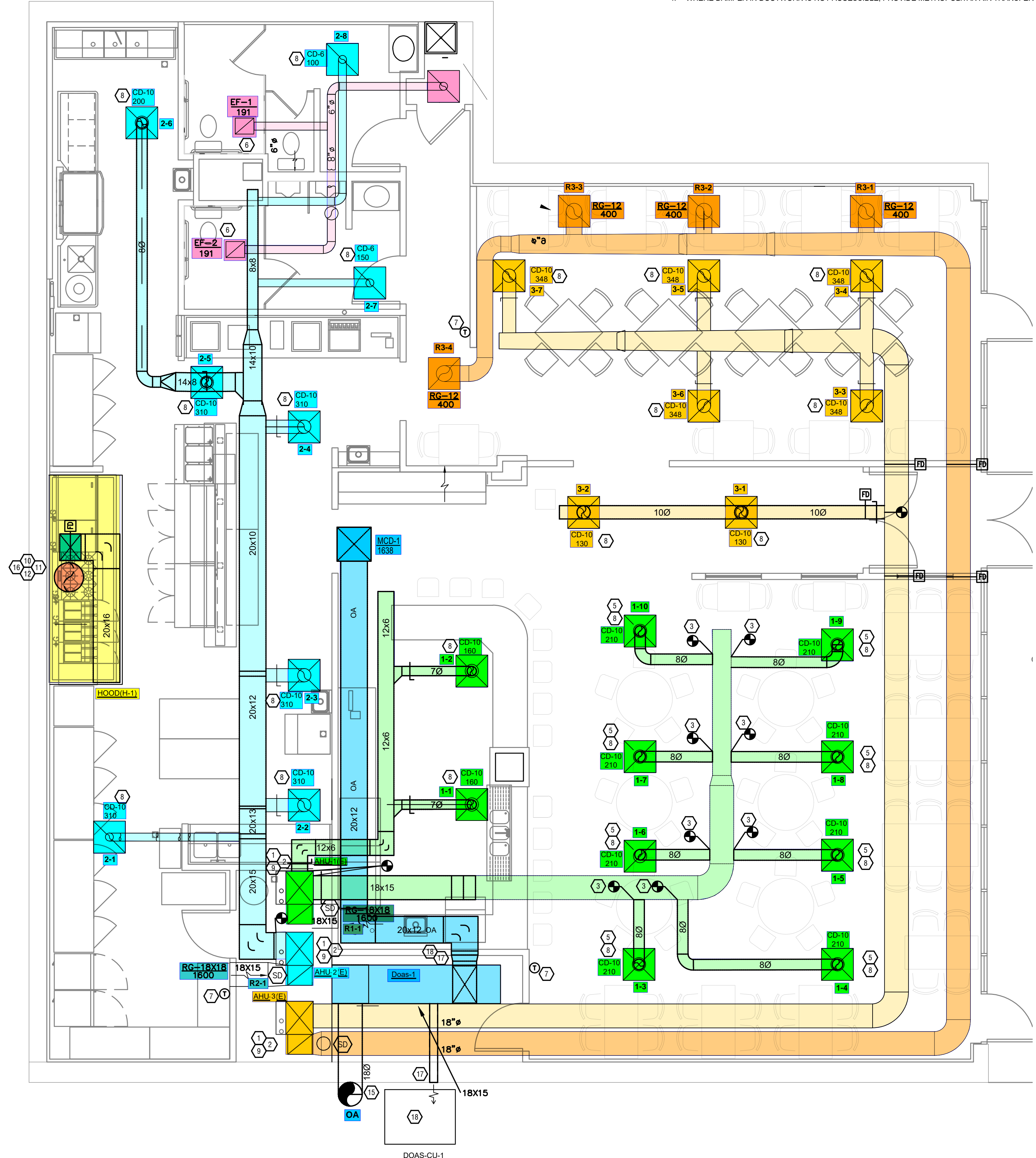
COOLING	HEATING
OUTDOOR: 93 DB / 75 WB	OUTDOOR: 0 DB
INDOOR: 72	INDOOR: 70

GENERAL NOTES

- FOR FULL SCHEDULES, SPECIFICATIONS, AND COMPLETE LISTING SEE DETAIL SHEETS.
- COORDINATE ROUTING OF ALL WORK WITH OTHER TRADES.
- COORDINATE WITH ELECTRICAL CONTRACTOR FOR POWER CONNECTIONS TO ALL MECHANICAL EQUIPMENT.
- INSTALL ALL EQUIPMENT PER MANUFACTURER'S REQUIREMENTS. MAINTAIN ALL CODE RECOMMENDED CLEARANCES FOR ACCESS AND MAINTENANCE.
- REFER TO ARCHITECTURAL PLANS FOR DIMENSIONS, AND FINAL CEILING DIFFUSER LOCATIONS.
- MAINTAIN ALL CODE REQUIRED SERVICE CLEARANCES. FOLLOW CLEARANCE TO COMBUSTIBLE DISTANCE PER MANUFACTURER'S INSTRUCTIONS.
- PROVIDE BACKDRAFT DAMPERS FOR ALL EXHAUST SYSTEMS AND EITHER LOUVER, BRICK VENT, OR CAPS AT ALL EXTERIOR BUILDING PENETRATIONS.
- ROUTE ALL AIR CONDITIONER CONDENSATE TO NEARBY FLOOR DRAIN. PROVIDE MINIMUM SLOPE OF 1/8" PER FOOT. SIZE CONDENSATE PER SECTION 307.2.2 OF THE (OHIO) MECHANICAL CODE.
- MOUNT THERMOSTATS 60" ABOVE FINISHED FLOOR. MOUNT THERMOSTATS 40" ABOVE FINISHED FLOOR.
- PROVIDE AN APPROVED THROUGH PENETRATION FIRESTOP FOR ALL PIPING INSTALLED AS TESTED IN ACCORDANCE WITH ASTM E814 OR UL 1479. FIRESTOP SHALL HAVE A MINIMUM POSITIVE PRESSURE DIFFERENTIAL OF 0.01 INCHES OF WATER AND SHALL HAVE AN F RATINGS OF NOT LESS THAN THE REQUIRED FIRE-RESISTANCE RATING OF THE WALL OR FLOOR PENETRATED.
- HOOD AND FANS ARE SUPPLIED AND INSTALLED BY FOOD SERVICE CONTRACTOR. ALL HOOD AND HOOD MAKE UP AIR DRAWINGS ARE FOR REFERENCE AND REQUIREMENTS FOR OTHER TRADES.
- REFER TO FOOD SERVICE DRAWINGS FOR KITCHEN EQUIPMENT SCHEDULES AND DETAILS.
- MAINTAIN CODE REQUIRED CLEARANCE TO COMBUSTIBLES FOR ALL GAS-FIRED EQUIPMENT.

SYMBOLS LEGEND - HVAC

	THERMOSTAT
	CEILING DIFFUSER
	SIDE WALL GRILLE
	RETURN WALL GRILLE
	AIR FLOW DIRECTION
	DUCTWORK
	LINED DUCTWORK
	TYPICAL SUPPLY DUCT DN
	TYPICAL RETURN DUCT DN
	TYPICAL EXHAUST DUCT
	TURNING VANES
	TYPICAL ROUND DUCT DN
	ROUND DUCT UP
	1.5 HR FIRE DAMPER
	DROPPED CEILING/SOFFIT
	DUCT CONTINUATION
	CONNECTION POINT



Z:\Project Directories\11200 - 11289\11231 - Pelican's Reef - Cincinnati, OH - Construction Documents\11231-M102-MECHANICAL-FLOOR-PLAN.dwg - EBS, Not Date/Time: Dec 09, 2024 - 2:27pm - By: kmeyer
 THESE DRAWINGS AND SPECIFICATIONS ARE NOT AUTHORIZED TO BE USED AS CONTRACT DOCUMENTS. THESE DRAWINGS HAVE BEEN PREPARED TO DEMONSTRATE COMPLIANCE WITH APPLICABLE CODES, AND ARE INTENDED TO PROVIDE THE AUTHORITIES HAVING JURISDICTION WITH INFORMATION TO DETERMINE CODE COMPLIANCE. THE INSTALLING CONTRACTOR IS RESPONSIBLE TO ENSURE THAT MEANS, METHODS, AND MATERIALS USED IN CONSTRUCTION ARE INSTALLED IN ACCORDANCE WITH ANY CONTRACTUAL AGREEMENT THAT MAY EXIST WITH AN OWNER, CONSTRUCTION MANAGER, GENERAL CONTRACTOR, ETC. EBS ACCEPTS NO RESPONSIBILITY OR LIABILITY FOR THE COMPLIANCE OR CONDITION OF EXISTING EQUIPMENT AND WIRING.

DIFFUSER, GRILLE, AND REGISTER SCHEDULE

CALLOUT	DESCRIPTION	FACE SIZE (IN)	INLET SIZE (IN)	MODEL	NOTES
MCD-1	MODULAR CORE DIFFUSER, HORIZONTAL FLOW PATTERN	25 1/2x25 1/2	20x20	TITUS MCD	STEEL, WHITE FINISH

- NOTES FOR ALL AIR DEVICES:
- PLASTER FRAME WHERE LOCATED IN GYPSUM CEILING
 - AIR DEVICES SHALL BE ALUMINUM IN HIGH MOISTURE AREAS. (RESTROOMS)
 - WHERE AIR DEVICES ARE LOCATED IN A FIRE RATED ASSEMBLY, PROVIDE CEILING RADIATION DAMPERS, FIRE DAMPER, FIRE RATED INSULATION, AS REQUIRED PER CODE.
 - WHERE DAMPER IN DUCTWORK IS NOT ACCESSIBLE, PROVIDE METROPOLITAN AIR TRANSFER (MAT) MODEL RT-150 SERIES CABLE ACTUATED DAMPER DRIVE SYSTEM, OR APPROVED EQUAL.

MECHANICAL SCOPE OF WORK

MECHANICAL SCOPE OF WORK IS TO PROVIDE HVAC EQUIPMENT TO AN EXISTING RESTAURANT.

CODES & STANDARDS REFERENCED

- 2024 OHIO MECHANICAL CODE
- 2024 OHIO BUILDING CODE
- ASHRAE 90.1-2019

HVAC DESIGN CONDITIONS

COOLING OUTDOOR: 93 DB / 75 WB INDOOR: 72	HEATING OUTDOOR: 0 DB INDOOR: 70
---	--

GENERAL NOTES

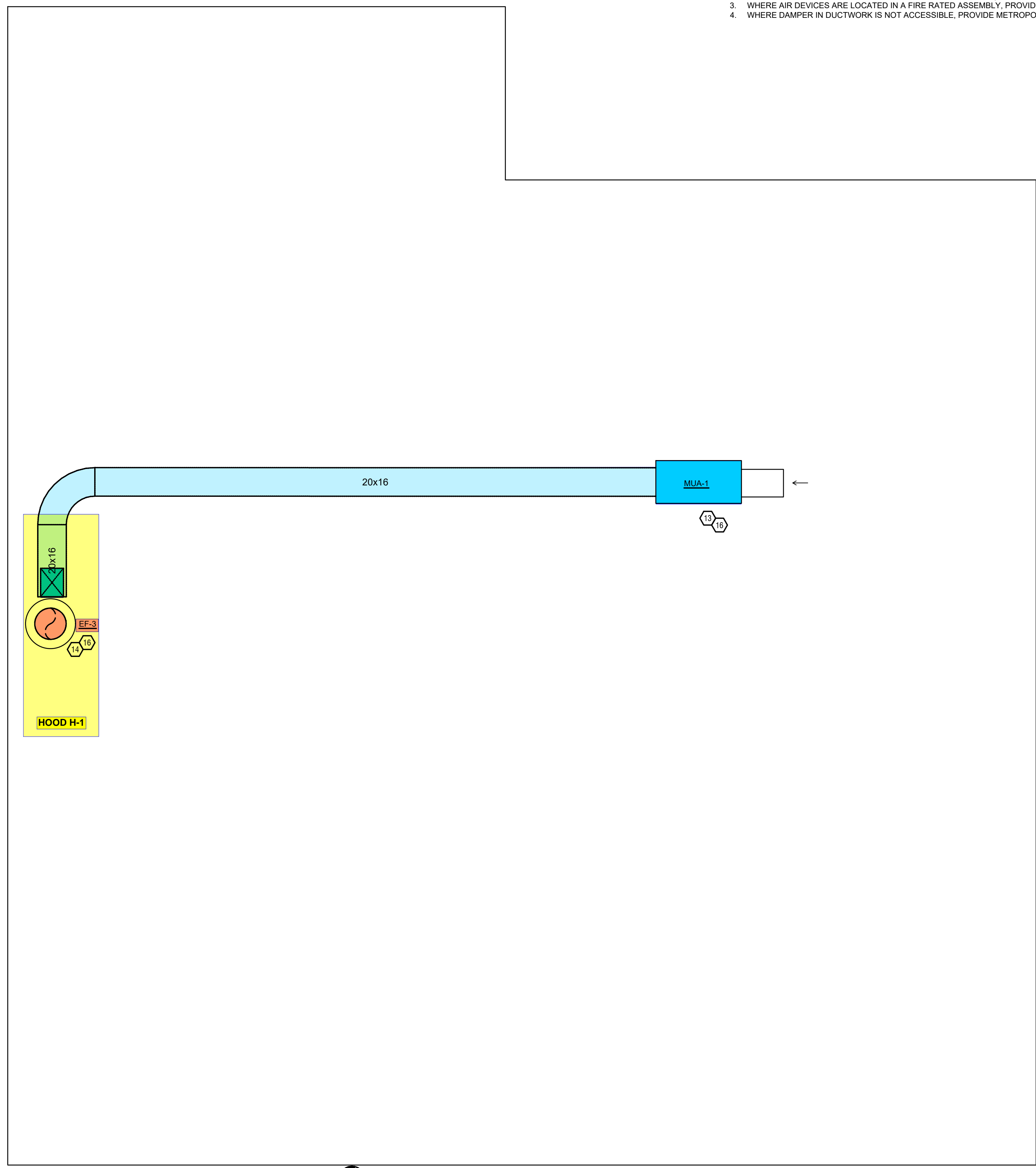
- FOR FULL SCHEDULES, SPECIFICATIONS, AND COMPLETE LISTING SEE DETAIL SHEETS.
- COORDINATE ROUTING OF ALL WORK WITH OTHER TRADES.
- COORDINATE WITH ELECTRICAL CONTRACTOR FOR POWER CONNECTIONS TO ALL MECHANICAL EQUIPMENT.
- INSTALL ALL EQUIPMENT PER MANUFACTURER'S REQUIREMENTS. MAINTAIN ALL CODE RECOMMENDED CLEARANCES FOR ACCESS AND MAINTENANCE.
- REFER TO ARCHITECTURAL PLANS FOR DIMENSIONS, AND FINAL CEILING DIFFUSER LOCATIONS.
- MAINTAIN ALL CODE REQUIRED SERVICE CLEARANCES. FOLLOW CLEARANCE TO COMBUSTIBLE DISTANCE PER MANUFACTURER'S INSTRUCTIONS.
- PROVIDE BACKDRAFT DAMPERS FOR ALL EXHAUST SYSTEMS AND EITHER LOUVER, BRICK VENT, OR CAPS AT ALL EXTERIOR BUILDING PENETRATIONS.
- ROUTE ALL AIR CONDITIONER CONDENSATE TO NEARBY FLOOR DRAIN. PROVIDE MINIMUM SLOPE OF 1/8" PER FOOT. SIZE CONDENSATE PER SECTION 307.2.2 OF THE (OHIO) MECHANICAL CODE.
- MOUNT THERMOSTATS 60" ABOVE FINISHED FLOOR. MOUNT THERMOSTATS 40" ABOVE FINISHED FLOOR.
- PROVIDE AN APPROVED THROUGH PENETRATION FIRESTOP FOR ALL PIPING INSTALLED AS TESTED IN ACCORDANCE WITH ASTM E814 OR UL 1479. FIRESTOP SHALL HAVE A MINIMUM POSITIVE PRESSURE DIFFERENTIAL OF 0.01 INCHES OF WATER AND SHALL HAVE AN F RATINGS OF NOT LESS THAN THE REQUIRED FIRE-RESISTANCE RATING OF THE WALL OR FLOOR PENETRATED.
- HOOD AND FANS ARE SUPPLIED AND INSTALLED BY FOOD SERVICE CONTRACTOR. ALL HOOD AND HOOD MAKE UP AIR DRAWINGS ARE FOR REFERENCE AND REQUIREMENTS FOR OTHER TRADES.
- REFER TO FOOD SERVICE DRAWINGS FOR KITCHEN EQUIPMENT SCHEDULES AND DETAILS.
- MAINTAIN CODE REQUIRED CLEARANCE TO COMBUSTIBLES FOR ALL GAS-FIRED EQUIPMENT.

KEYED SHEET NOTES

- ROUTE 3/4" CONDENSATE DRAIN LINE TO MECHANICAL CLOSET FLOOR DRAIN. SLOPE PIPE A MINIMUM OF 1/8" PER FOOT AWAY FROM UNIT.
- ROUTE LINE SET FROM OUTDOOR UNIT TO INDOOR AIR HANDLER. ALL PIPING SHALL BE CONCEALED IN FINISHED AREA. SIZE PER MANUFACTURER'S RECOMMENDATIONS.
- CONNECT NEW DUCTWORK TO EXISTING DUCT WORK.
- CONNECT MAKE UP AIR DUCT TO HOOD MAKE UP AIR INLETS.
- REWORK EXISTING DIFFUSER LOCATIONS TO ACCOMMODATE NEW CEILING LAYOUT. MAINS AND BRANCHES TO REMAIN AS IS TO ENSURE PROPER AIR DEVICE BALANCING. REMOVE EXISTING AIR DEVICES, CLEAN, AND REINSTALL. COORDINATE FINAL LOCATIONS WITH ARCHITECTURAL SHEETS. OCCUPANCY AND SPACE USAGE TO REMAIN THE SAME. BALANCE ALL DEVICES.
- EXISTING EXHAUST TO REMAIN.
- RELOCATE THERMOSTAT TO NEW LOCATION SHOWN. PROVIDE ADDITIONAL CONTROL WIRING AS NECESSARY.
- RELOCATE AND BALANCE EXISTING DIFFUSER TO NEW CFM SHOWN. CLEAN DIFFUSER TO LIKE NEW CONDITION BEFORE REINSTALLATION IN NEW LOCATION.
- EXISTING HVAC EQUIPMENT TO REMAIN. BALANCE TO NEW AIRFLOWS LISTED IN SCHEDULE.
- WHERE EXHAUST DUCT PENETRATES A FIRE PARTITION, THE DUCT SIZE SHALL NOT EXCEED 100 SQUARE INCHES. DUCT SHALL BE CONSTRUCTED OF STEEL A MINIMUM OF 0.0217 INCH IN THICKNESS. DUCT SHALL NOT HAVE ANY OPENINGS COMMUNICATING WITH ADJACENT SPACES. DUCT SHALL BE INSTALLED ABOVE A CEILING, AND THE ANNULAR SPACE BETWEEN THE DUCT AND WALL OPENING SHALL BE FILLED WITH MINERAL WOOL BATTING ON ALL SIDES.
- PROVIDE GREASE CLEANOUT ACCESS DOOR.
- HOOD INSTALLER TO PROVIDE GREASE CLEANOUT DOOR AT ANY LOCATION THAT THERE IS A CHANGE OF DIRECTION OF MORE THAN 45 DEGREES AND A MINIMUM OF EVERY 20 FEET OF HORIZONTAL DUCT RUN.
- PROVIDE AND INSTALL MAKE UP AIR UNIT MAINTAIN ALL CODE REQUIRED CLEARANCES AND DISTANCES.
- PROVIDE AND INSTALL NEW HOOD EXHAUST UNIT MAINTAIN ALL CODE REQUIRED CLEARANCES AND DISTANCES.
- DOAS OUTSIDE AIR INLET TO BE INSTALLED A MINIMUM OF 25' ABOVE DRIVE WAY TO MAINTAIN ALL INTAKE AIR CODE REQUIREMENTS.
- REFER TO KITCHEN ECON AIR DRAWINGS FOR KITCHEN EQUIPMENT INFORMATION.
- DOAS FLUE TO BE INSTALL PER MANUFACTURER REQUIREMENTS. ROUTE DIRECTLY TO EXTERIOR WALL AND MAINTAIN ALL CODE REQUIREMENTS FOR FLUES.
- PROVIDE AND INSTALL NEW DOAS SYSTEM MAINTAIN ALL MANUFACTURER INSTALLATION REQUIREMENTS.

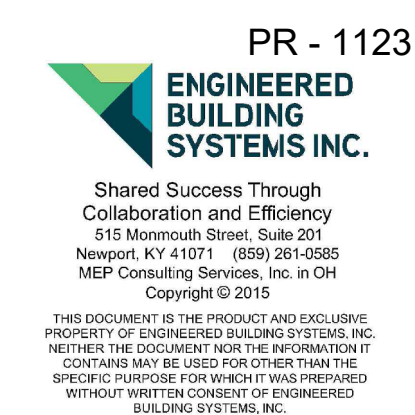
SYMBOLS LEGEND - HVAC

⊙	THERMOSTAT
⊠	CEILING DIFFUSER
→	SIDE WALL GRILL
←	RETURN WALL GRILL
↔	AIR FLOW DIRECTION
14x10	DUCTWORK
14x10	UND DUCTWORK
⊠	TYPICAL SUPPLY DUCT DN
⊠	TYPICAL RETURN DUCT DN
⊠	TYPICAL EXHAUST DUCT
⊠	TYPICAL ROUND DUCT DN
⊠	ROUND DUCT UP
⊠	1.5 HR FIRE DAMPER
⊠	DROPPED CEILING/SOFFIT
⊠	DUCT CONTINUATION
⊠	CONNECTION POINT



ISSUANCES	NO.	DESCRIPTION	PERMIT
	1		
	2		
	3		
	4		
	5		
	6		
	7		
	8		
	9		
	10		
	11		
	12		
	13		
	14		
	15		
	16		
	17		
	18		
	19		
	20		
	21		
	22		
	23		
	24		
	25		
	26		
	27		
	28		
	29		
	30		
	31		
	32		
	33		
	34		
	35		
	36		
	37		
	38		
	39		
	40		
	41		
	42		
	43		
	44		
	45		
	46		
	47		
	48		
	49		
	50		

PELICAN'S REEF
 7621 BEECHMONT AVENUE,
 CINCINNATI, OH 45230



DRAWN BY: KRM
 CHECKED BY: SSS

PROJECT NO.: 11231

SCALE: AS NOTED

DATE: 12-06-2024

DRAWING TITLE
 MECHANICAL
 FLOOR PLAN

SHEET NO.
M102

MECHANICAL FLOOR PLAN
 SCALE: 1/4" = 1'-0"