

Report By:

National TAB
1329 E. KEMPER ROAD
SUITE 4210
CINCINNATI, OH 45246



Report: PRELIM

Function: Test, Adjust, & Balance

Date: 10/31/2025

Completed By: National TAB

PROJECT

Pelican's Reef (Cincinnati, OH)

7216 Beechmont Avenue

Cincinnati, OH 45230

Client

Feldkamp Enterprises

3642 Muddy Creek Rd

Cincinnati, OH 45238

National TAB

Project: Pelican's Reef (Cincinnati, OH)

Table Of Contents

Section	Page #
Remarks	3
AHU/RTU	8
FAN - Exhaust	15
FAN - Supply	18
Kitchen Hood Type I	19

Issue List

- AHU-2 & AHU-3 low on flow
- AHU-2 extra diffuser
- AHU-2-8 without damper
- EF-1 & EF-2 low on flow



Pelican's Reef (Cincinnati, OH)

Project Issue Information

Issue Name : AHU-2 & AHU-3 low on flow
Description : Both units are at max speed producing low flow. Units are not ducted for OA.
Created By : National TAB **Assigned To :** National TAB - Corey Dick
Status : Open
Priority : Urgent **Asset Tag :**
Originated Date : 10/31/2025 - Aaron Cosby - National TAB



Pelican's Reef (Cincinnati, OH)

Project Issue Information

Issue Name : AHU-2 extra diffuser
Description : There is a diffuser between diffusers 5 and 6 that needs to be capped. Is restricting airflow to the needed diffusers
Created By : National TAB **Assigned To :** National TAB - Corey Dick
Status : Open
Priority : Urgent **Asset Tag :**
Originated Date : 10/31/2025 - Aaron Cosby - National TAB

Project Issue File Details



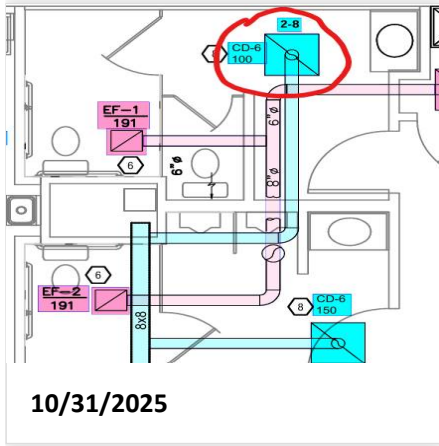


Pelican's Reef (Cincinnati, OH)

Project Issue Information

Issue Name : AHU-2-8 without damper
Description : Diffuser 8 off AHU-2 is without a damper and above cfm design
Created By : National TAB
Assigned To : National TAB - Corey Dick
Status : Open
Priority : Urgent
Asset Tag :
Originated Date : 10/31/2025 - Aaron Cosby - National TAB

Project Issue File Details





Pelican's Reef (Cincinnati, OH)

Project Issue Information

Issue Name : EF-1 & EF-2 low on flow
Description : Both ceiling mounted restroom general exhausts are low on flow. No speed controller located
Created By : National TAB **Assigned To :** National TAB - Corey Dick
Status : Open
Priority : Urgent **Asset Tag :**
Originated Date : 10/31/2025 - Aaron Cosby - National TAB

National TAB

Project: Pelican's Reef (Cincinnati, OH)

System/Unit: AHU/RTU



Asset: AHU-1

AREA:BAR/LOUNGE

Unit Data		
	Design	Actual
MFG	NA	TRANE
Serial Num	-	23344MSX3G
Model Num	NA	A951X120
Type	-	FURNACE
Configuration	-	VERTICAL
Num PreFilter 1	-	1
PreFilter Size 1	-	20"X25"X1"

Test Data		
	Design	Actual
SF CFM	2000	1873
SF RPM	-	NA
RA CFM	1600	1873
OA CFM	-	0
RL Voltage	-	121
RL Amperage	-	9.0
SF System SetPt	-	TP9(MAX)

Motor Data		
	Design	Actual
Phase	-	1
Rated Voltage	-	120
Rated Amperage	-	14.1

Performance Data		
	Design	Actual
MA Plenum SP	-	-0.13"
Fan Suction SP	-	-0.85"
Fan Discharge SP	-	0.18"
Total ESP	-	0.31"
Fan Total SP	-	1.03"

Completed By: Aaron Cosby on 10/31/2025

National TAB

Project: Pelican's Reef (Cincinnati, OH)

AHU/RTU



Diffuser Supply (GRD)

AHU-1/BAR/LOUNGE

Asset							
Asset Name	Location	Type	Size	DESIGN CFM	CFM(1)	FINAL CFM	% to design
1-1	BAR/LOUNGE	CD-10	7	160	206	153	95.6
1-2	BAR/LOUNGE	CD-10	7	160	97	146	91.3
1-3	BAR/LOUNGE	CD-10	8	210	164	189	90.0
1-4	BAR/LOUNGE	CD-10	8	210	238	191	91.0
1-5	BAR/LOUNGE	CD-10	8	210	238	198	94.3
1-6	BAR/LOUNGE	CD-10	8	210	183	204	97.1
1-7	BAR/LOUNGE	CD-10	8	210	150	205	97.6
1-8	BAR/LOUNGE	CD-10	8	210	195	204	97.1
1-9	BAR/LOUNGE	CD-10	8	210	187	190	90.5
1-10	BAR/LOUNGE	CD-10	8	210	131	193	91.9
Total				2000	1789	1873	93.65%

National TAB

Project: Pelican's Reef (Cincinnati, OH)

System/Unit: AHU/RTU



Asset: AHU-2

AREA:KITCHEN/RR

Unit Data		
	Design	Actual
MFG	NA	TRANE
Serial Num	-	23344Y5JG
Model Num	NA	A951X120
Type	-	FURNACE
Configuration	-	VERTICAL
Num PreFilter 1	-	1
PreFilter Size 1	-	20"X25"X1"

Motor Data		
	Design	Actual
Phase	-	1
Rated Voltage	-	120
Rated Amperage	-	14.1

Test Data		
	Design	Actual
SF CFM	2000	1609
SF RPM	-	NA
RA CFM	1600	1609
OA CFM	-	0
RL Voltage	-	122
RL Amperage	-	8.7
SF System SetPt	-	TP9(MAX)

Performance Data		
	Design	Actual
MA Plenum SP	-	-0.19"
Fan Suction SP	-	-0.80"
Fan Discharge SP	-	0.19"
Total ESP	-	0.38"
Fan Total SP	-	0.99"

Completed By: Aaron Cosby on 10/31/2025

National TAB

Project: Pelican's Reef (Cincinnati, OH)

AHU/RTU



Diffuser Supply (GRD)

AHU-2/KITCHEN/RR

Asset							
Asset Name	Location	Type	Size	DESIGN CFM	CFM(1)	FINAL CFM	% to design
2-1	KITCHEN	CD-10	8	310	136	120	38.7
2-2	KITCHEN	CD-10	8	310	60	314	101.3
2-3	KITCHEN	CD-10	8	310	355	331	106.8
2-4	KITCHEN	CD-10	8	310	366	250	80.6
2-5	KITCHEN	CD-10	8	310	117	193	62.3
2-6	KITCHEN	CD-10	8	200	114	117	58.5
2-7	RR	CD-6	8	150	143	143	95.3
2-8	RR	CD-6	8	100	141	141	141.0
Total				2000	1432	1609	80.45%

National TAB

Project: Pelican's Reef (Cincinnati, OH)
System/Unit: AHU/RTU



Asset: AHU-3

AREA: DINING

Unit Data		
	Design	Actual
MFG	NA	TRANE
Serial Num	-	23344MSX3G
Model Num	NA	A951X120
Type	-	FURNACE
Configuration	-	VERTICAL
Num PreFilter 1	-	1
PreFilter Size 1	-	20"X25"X2"

Motor Data		
	Design	Actual
Phase	-	1
Rated Voltage	-	120
Rated Amperage	-	14.1

Test Data		
	Design	Actual
SF CFM	2000	1441
SF RPM	-	NA
RA CFM	1600	1441
OA CFM	-	0
RL Voltage	-	122
RL Amperage	-	7.4
SF System SetPt	-	TP9(MAX)

Performance Data		
	Design	Actual
MA Plenum SP	-	-0.39"
Fan Suction SP	-	-0.89"
Fan Discharge SP	-	0.11"
Total ESP	-	0.5"
Fan Total SP	-	1.00"

Completed By: Aaron Cosby on 10/31/2025

National TAB

Project: Pelican's Reef (Cincinnati, OH)

AHU/RTU



Diffuser Supply (GRD)

AHU-3/DINING

Asset							
Asset Name	Location	Type	Size	DESIGN CFM	CFM(1)	FINAL CFM	% to design
3-1	DINING	CD-10	8	130	187	139	106.9
3-2	DINING	CD-10	8	130	62	138	106.2
3-3	DINING	CD-10	8	348	191	243	69.8
3-4	DINING	CD-10	8	348	211	250	71.8
3-5	DINING	CD-10	8	348	82	204	58.6
3-6	DINING	CD-10	8	348	180	272	78.2
3-7	DINING	CD-10	8	348	320	195	56.0
Total				2000	1233	1441	72.05%

National TAB

Project: Pelican's Reef (Cincinnati, OH)

System/Unit: AHU/RTU



Asset: DOAS-1

AREA:

Unit Data		
	Design	Actual
MFG	NA	ENGINEERED AIR
Serial Num	-	EA10422
Model Num	NA	XES160
Type	-	DOAS
Configuration	-	VERTICAL
Num PreFilter 1	-	2
PreFilter Size 1	-	16"X25"X2"

Test Data		
	Design	Actual
SF CFM	1600	1550
SF RPM	-	1337
RA CFM	-	0
OA CFM	-	1550
RL Voltage	-	212/213/212
RL Amperage	-	7.8/7.9/8.0
SF System SetPt	-	MAX

Motor Data		
	Design	Actual
Horsepower	3.0	3.0
Motor Rpm	-	1337
Phase	3	3
Rated Voltage	208	208
Rated Amperage	-	9.7

Performance Data		
	Design	Actual
Fan Suction SP	-	-0.85"
Fan Discharge SP	-	0.87"
Total ESP	1.0	1.72"

Drive Data	
	Actual
Motor Sheave Size	VP56
Motor Bore Size	NA
Fan Sheave Size	BK70H
Fan Sheave Bore	NA
Belt CL Distance	NA
Num of Belts	1
Belt Size	A52

Completed By: Aaron Cosby on 10/31/2025

National TAB
Project: Pelican's Reef (Cincinnati, OH)
System/Unit: FAN - Exhaust



Asset: (KEF) EF-3

AREA:

Unit Data		
	Design	Actual
MFG	NA	ECON-AIR
Model Num	NA	EADU180H

Completed By: Aaron Cosby on 10/31/2025

Notes:
HOOD EXHAUST DONE BY CAPTIVE AIRE

Written By: Aaron Cosby on 10/31/2025

National TAB

Project: Pelican's Reef (Cincinnati, OH)
System/Unit: FAN - Exhaust



Asset: EF-1

AREA:RR

Unit Data		
	Design	Actual
MFG	EXISTING	GREENHECK
Model Num	EXISTING	SP-B90
Serial Num	-	192447965
Type	-	CEILING

Test Data		
	Design	Actual
CFM	191	82
RL Voltage	-	115
RL Amperage	-	0.1

Motor Data		
	Design	Actual
Motor MFG	-	GREENHECK
Motor Rpm	-	700
Phase	-	1
Voltage (rated)	-	115
Amperage (rated)	-	0.19

Completed By: Aaron Cosby on 10/31/2025

National TAB

Project: Pelican's Reef (Cincinnati, OH)
System/Unit: FAN - Exhaust



Asset: EF-2

AREA:RR

Unit Data		
	Design	Actual
MFG	EXISTING	GREENHECK
Model Num	EXISTING	SP-B90
Serial Num	-	189725132
Type	-	CEILING

Test Data		
	Design	Actual
CFM	191	86
RL Voltage	-	115
RL Amperage	-	0.1

Motor Data		
	Design	Actual
Motor Rpm	-	700
Phase	-	1
Voltage (rated)	-	115
Amperage (rated)	-	0.19

Completed By: Aaron Cosby on 10/31/2025

National TAB

Project: Pelican's Reef (Cincinnati, OH)
System/Unit: FAN - Supply



Asset: MUA-1

AREA:

Unit Data		
	Design	Actual
MFG	NA	ECON-AIR
Model Num	NA	EA2-D.250-20D

Completed By: Aaron Cosby on 10/31/2025

National TAB

Project: Pelican's Reef (Cincinnati, OH)

System/Unit: Kitchen Hood Type I



Asset: H-1

AREA: KITCHEN

Unit Data		
	Design	Actual
MFG	NA	ECON-AIR
Model Num	NA	6024 EX-2-PSP-F
Job / Serial Num	-	6285641
Type	TYPE I CANOPY	
Hood length	156	
Hood Width	60	
Supply Plenum Type	-	PSP
Supply Plenum Width	14	
Supply Plenum Length	169	

Test Data Exhaust		
	Design	Actual
Filter Type	CAPTRATE SOLO	
Filter Size 1	20X16	
Filter Size 2	-	
Filter Qty 1	9	
Filter Qty 2	-	
Filter AK factor size 1	2.08	
Filters AK factor size 2	-	
Filter Total AK Area	18.72	
Filter1 FPM	-	
Filter2 FPM	-	
Filter3 FPM	-	
Filter4 FPM	-	
Filter5 FPM	-	
Filter6 FPM	-	
Filter7 FPM	-	
Filter8 FPM	-	
Filter9 FPM	-	
Filter10 FPM	-	
Filter11 FPM	-	
Filter12 FPM	-	
Filter Ave FPM(corr)	-	
CFM	3250	

Cooking Equipment	
	Actual
Item 1	
Item 2	
Item 3	
Item 4	
Item 5	

Test Data Supply		
	Design	Actual
Total Area	16.43	
Kv factor (Vel)	0.90	
Num of Readings	-	
Reading1 FPM	-	
Reading2 FPM	-	
Reading3 FPM	-	
Reading4 FPM	-	
Reading5 FPM	-	
Reading6 FPM	-	
Reading7 FPM	-	
Reading8 FPM	-	
Reading9 FPM	-	
Reading10 FPM	-	
Reading11 FPM	-	
Reading12 FPM	-	
Reading13 FPM	-	
Reading14 FPM	-	
Ave FPM(corr)	-	
CFM	2125	

Completed By: Aaron Cosby on 10/31/2025