

FOR QUESTIONS, CALL THE
Florida National Accounts
REGION 60
PHONE: (407) 682-3100
EMAIL: reg60@captiveaire.com

HOOD INFORMATION - JOB#6028200

HOOD NO	TAG	MODEL	MANUFACTURER	LENGTH	MAX COOKING TEMP	TYPE	APPLIANCE DUTY	DESIGN CFM/FT	TOTAL EXH CFM	EXHAUST PLENUM RISER(S)						HOOD CONSTRUCTION	HOOD CONFIG		
										WIDTH	LENG	HEIGHT	DIA	CFM	VEL		SP	END TO END	ROW
1	FRYER HOOD	3347 BD-2	CAPTIVEAIRE	7' 0"	600 DEG	I	HEAVY	214	1500			4'	12'	1500	1910	-1.090'	430 SS WHERE EXPOSED	ALONE	ALONE
2	GRIDDLE HOOD	3347 BD-2	CAPTIVEAIRE	5' 6"	600 DEG	I	HEAVY	273	1500			4'	12'	1500	1910	-1.412'	430 SS WHERE EXPOSED	ALONE	ALONE

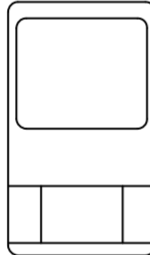
HOOD INFORMATION

HOOD NO	TAG	TYPE	FILTER(S)				LIGHT(S)				UTILITY CABINET(S)				FIRE SYSTEM PIPING	HOOD HANGING WEIGHT
			QTY	HEIGHT	LENGTH	EFFICIENCY @ 7 MICRONS	QTY	TYPE	WIRE GUARD	LOCATION	SIZE	TYPE	SIZE	MODEL #		
1	FRYER HOOD	CAPTRATE SOLO FILTER	5	16"	16"	85% SEE FILTER SPEC	3	L55 SERIES E26	NO						YES	263 LBS
2	GRIDDLE HOOD	CAPTRATE SOLO FILTER	4	16"	16"	85% SEE FILTER SPEC	3	L55 SERIES E26	NO						YES	225 LBS

HOOD OPTIONS

HOOD NO	TAG	OPTION
1	FRYER HOOD	FIELD WRAPPER 14.00' HIGH FRONT, LEFT, RIGHT.
		RIGHT QUARTER END PANEL 23' TOP WIDTH, 0' BOTTOM WIDTH, 23' HIGH 430 SS.
		LEFT QUARTER END PANEL 23' TOP WIDTH, 0' BOTTOM WIDTH, 23' HIGH 430 SS.
SENSOR-CV.		
2	GRIDDLE HOOD	FIELD WRAPPER 14.00' HIGH FRONT, LEFT, RIGHT.
		RIGHT QUARTER END PANEL 23' TOP WIDTH, 0' BOTTOM WIDTH, 23' HIGH 430 SS.
		LEFT QUARTER END PANEL 23' TOP WIDTH, 0' BOTTOM WIDTH, 23' HIGH 430 SS.
SENSOR-CV.		

ROOM TEMPERATURE SENSOR



Provides room override based on temperature differential between the room and duct. Installed by electrician on a wall, 5'-6' off the finished floor, in the space but not directly under the hood or close to an appliance (including the electrical control box) so the reading is accurate for space. Ideal location is by the RTU thermostats.

CAPTIVEAIRE HOODS ARE ETL SANITATION LISTED AND BUILT IN COMPLIANCE WITH NSF/ANSI STANDARD 2, AND TO UL 710 & ULC710 STANDARDS.





E.T.L. LISTED 102900319PRT-001

SPECIFICATION: CAPTRATE® GREASE-STOP® SOLO FILTER

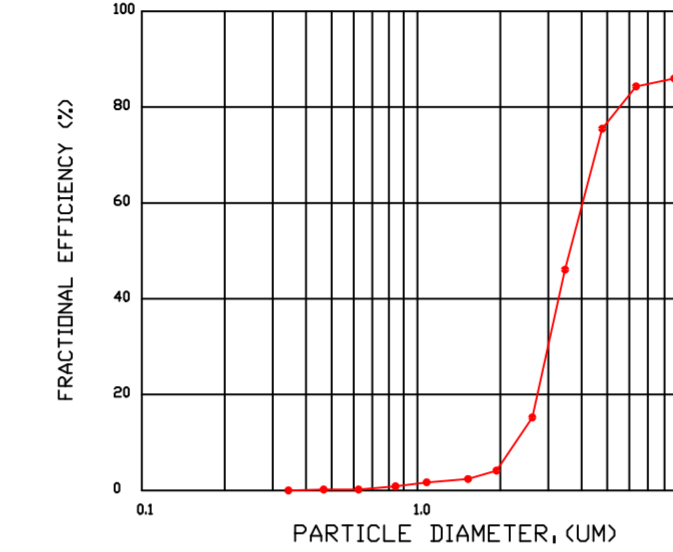
THE CAPTRATE GREASE-STOP SOLO FILTER IS A SINGLE-STAGE FILTER FEATURING A UNIQUE S-BAFFLE DESIGN IN CONJUNCTION WITH A SLOTTED REAR BAFFLE DESIGN, TO DELIVER EXCEPTIONAL FILTRATION EFFICIENCY.

FILTER IS STAINLESS STEEL CONSTRUCTION, AND SIZED TO FIT INTO STANDARD 2-INCH DEEP HOOD CHANNEL(S).

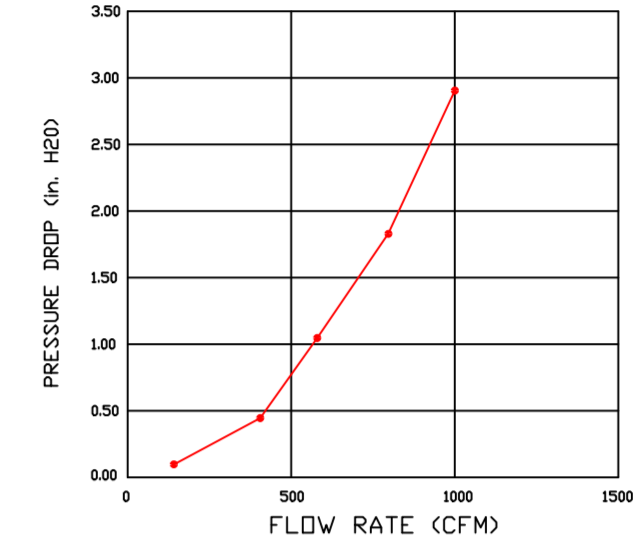
UNITS SHALL INCLUDE STAINLESS STEEL HANDLES AND A FASTENING DEVICE TO SECURE THE TWO COMPONENTS WHEN ASSEMBLED.

GREASE EXTRACTION EFFICIENCY PERFORMANCE SHALL REMOVE AT LEAST 75% OF GREASE PARTICLES FIVE MICRONS IN SIZE, AND 85% GREASE PARTICLES SEVEN MICRONS IN SIZE AND LARGER, WITH A CORRESPONDING PRESSURE DROP NOT TO EXCEED 1.0 INCHES OF WATER GAUGE. THE CAPTRATE GREASE-STOP SOLO WAS TESTED TO ASTM STANDARD ASTM F2519-05. MANUFACTURER APPROVED FOR USE IN SOLID FUEL APPLICATIONS AS A SPARK ARRESTER.

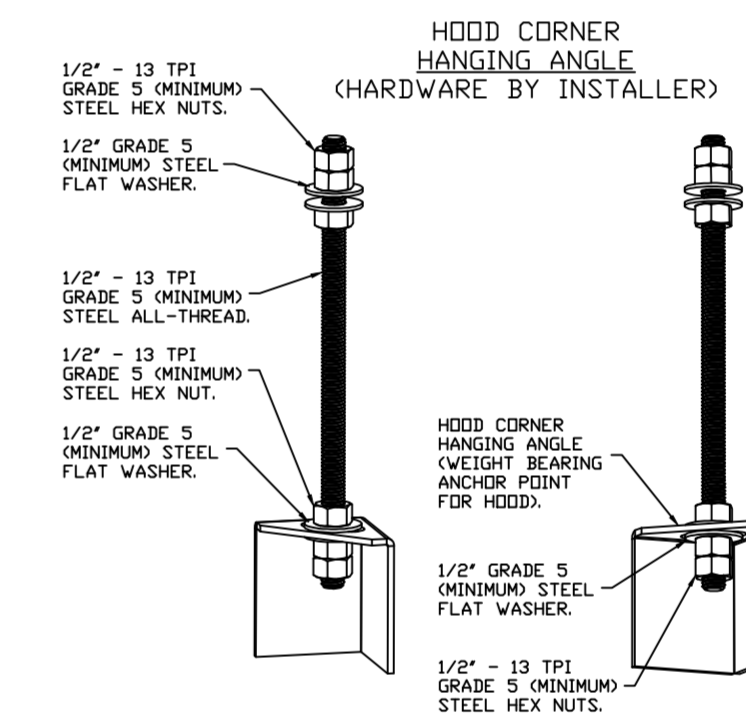
EFFICIENCY VS. PARTICLE DIAMETER



PRESSURE DROP VS. FLOW RATE



CAPTRATE FILTERS ARE BUILT IN COMPLIANCE WITH:
NFPA #96.
NSF STANDARD #2.
UL STANDARD #1046.
INT. MECH. CODE (IMC).
ULC-S649.



ASSEMBLY INSTRUCTIONS

HANGING ANGLE MUST BE SUPPORTED WITH 1/2" GRADE 5 (MINIMUM) ALL-THREAD, SANDWICH HANGING ANGLES AND CEILING ANCHOR POINTS WITH 1/2" GRADE 5 (MINIMUM) STEEL FLAT WASHERS AND 1/2" - 13 TPI GRADE 5 (MINIMUM) HEX NUTS AS SHOWN. MUST USE DOUBLED HEX NUT CONFIGURATION BENEATH HOOD HANGING ANGLES AND ABOVE CEILING ANCHORS. MAINTAIN 1/4" OF EXPOSED THREADS BENEATH BOTTOM HEX NUT. TORQUE ALL HEX NUTS TO 57 FT-LBS.

SYSTEM DESIGN VERIFICATION (SDV)

IF ORDERED, CAS SERVICE WILL PERFORM A SYSTEM DESIGN VERIFICATION (SDV) ONCE ALL EQUIPMENT HAS HAD A COMPLETE START UP PER THE OPERATION AND INSTALLATION MANUAL. TYPICALLY, THE SDV WILL BE PERFORMED AFTER ALL INSPECTIONS ARE COMPLETE.

ANY FIELD RELATED DISCREPANCIES THAT ARE DISCOVERED DURING THE SDV WILL BE BROUGHT TO THE ATTENTION OF THE GENERAL CONTRACTOR AND CORRESPONDING TRADES ON SITE. THESE ISSUES WILL BE DOCUMENTED AND FORWARDED TO THE APPROPRIATE SALES OFFICE. IF CAS SERVICE HAS TO RESOLVE A DISCREPANCY THAT IS A FIELD ISSUE, THE GENERAL CONTRACTOR WILL BE NOTIFIED AND BILLED FOR THE WORK. SHOULD A RETURN TRIP BE REQUIRED DUE TO ANY FIELD RELATED DISCREPANCY THAT CANNOT BE RESOLVED DURING THE SDV, THERE WILL BE ADDITIONAL TRIP CHARGES.

DURING THE SDV, CAS SERVICE WILL ADDRESS ANY DISCREPANCY THAT IS THE FAULT OF THE MANUFACTURER. SHOULD A RETURN TRIP BE REQUIRED, THE GENERAL CONTRACTOR AND APPROPRIATE SALES OFFICE WILL BE NOTIFIED. THERE WILL BE NO ADDITIONAL CHARGES FOR MANUFACTURER DISCREPANCIES.

REVISIONS

DESCRIPTION	DATE



CULVERS PADDOCK LAKE WI
SALEM, WI, 53168

DATE: 7/19/2023

DWG.#: 6028200

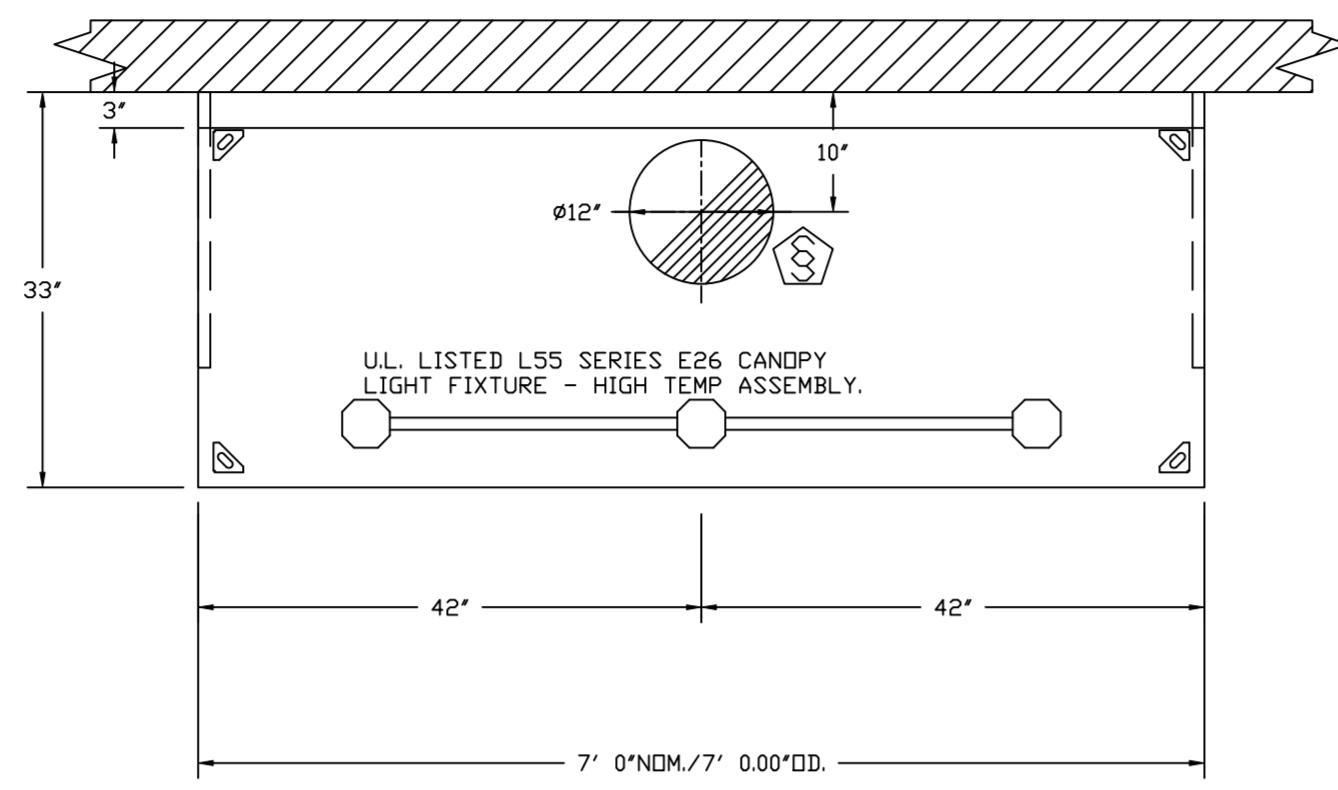
DRAWN BY: sluddyjr

SCALE: 3/4" = 1'-0"

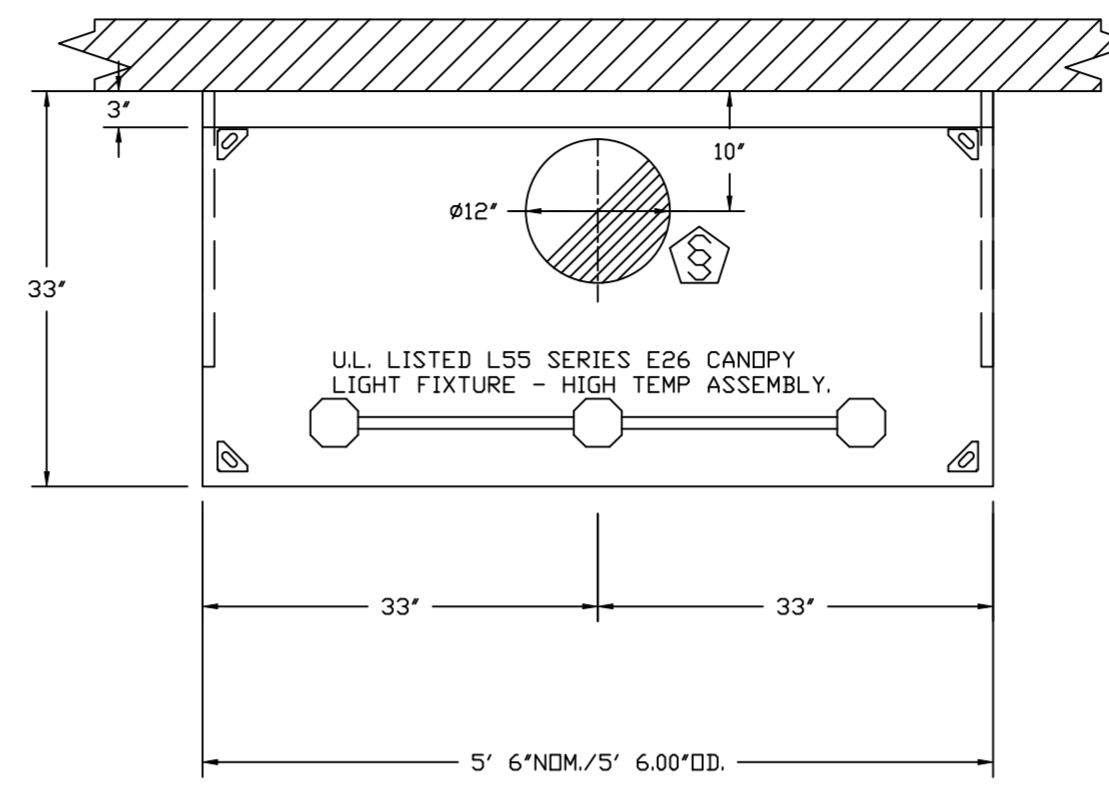
MASTER DRAWING

SHEET NO.

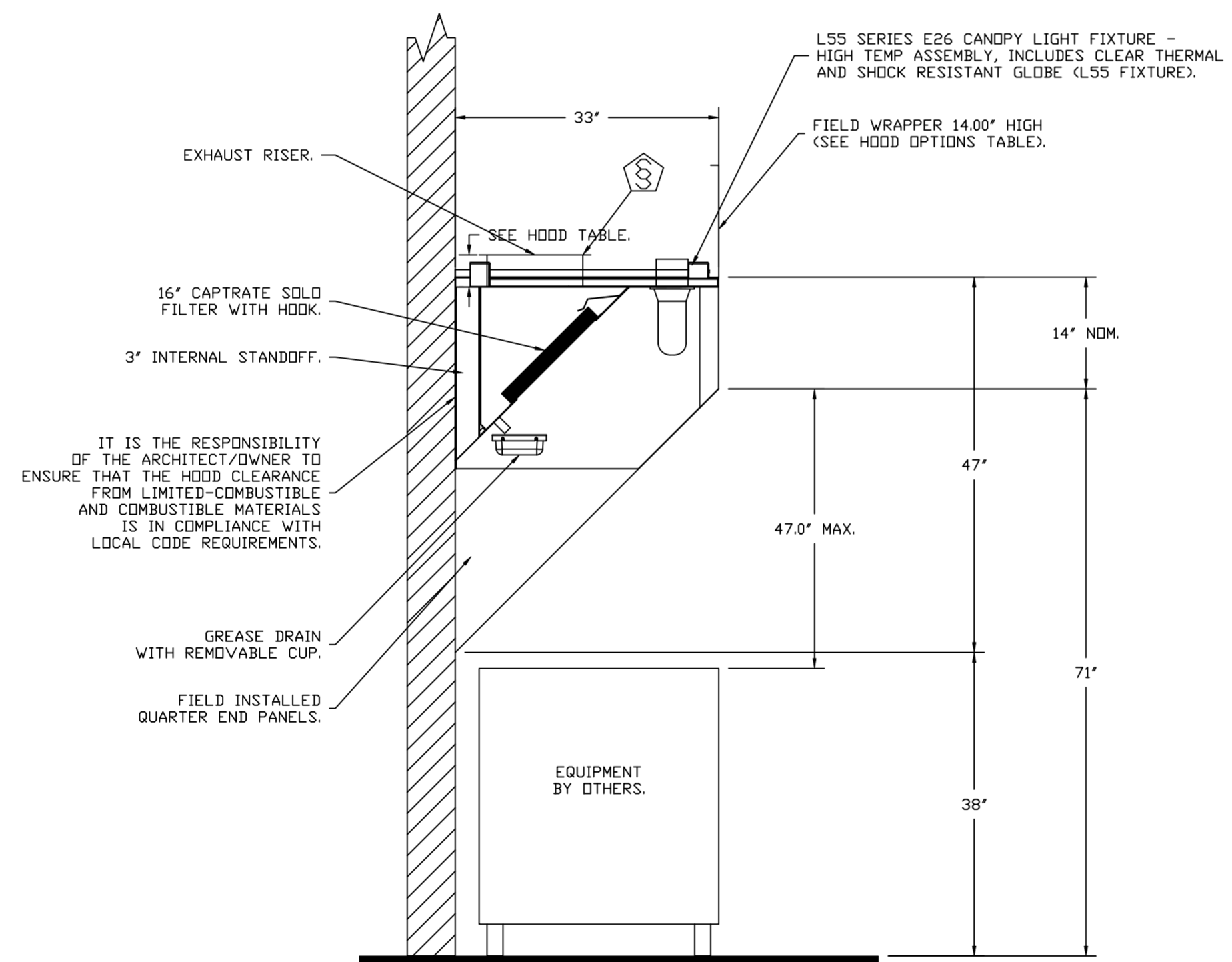
1



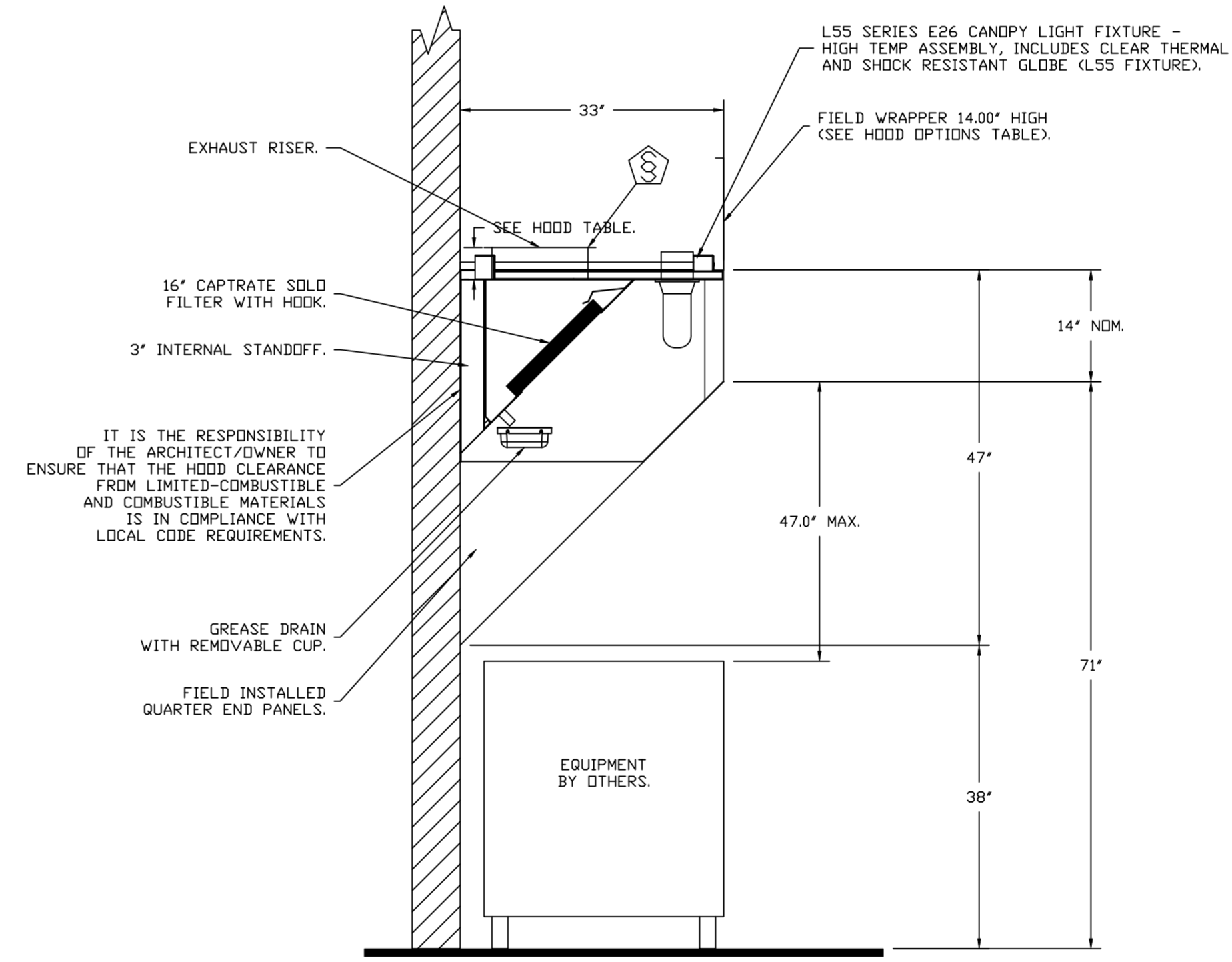
PLAN VIEW - HOOD #1 (FRYER HOOD)
7' 0.00" LONG 3347BD-2



PLAN VIEW - HOOD #2 (GRIDDLE HOOD)
5' 6.00" LONG 3347BD-2



SECTION VIEW - MODEL 3347BD-2
HOOD - #1 (FRYER HOOD)



SECTION VIEW - MODEL 3347BD-2
HOOD - #2 (GRIDDLE HOOD)

REVISIONS	
DESCRIPTION	DATE


 Florida National Accounts
 www.captiveair.com
 238 N Hunt Club Blvd., STE 201, Longwood, FL 32779 PHONE: (407) 882-3100 FAX: 9192275913 EMAIL: reg60@captiveair.com

CULVERS PADDOCK LAKE WI
 SALEM, WI, 53168

DATE: 7/19/2023
 DWG.#: 6028200
 DRAWN BY: sluddy jr
 SCALE: 3/4" = 1'-0"
 MASTER DRAWING

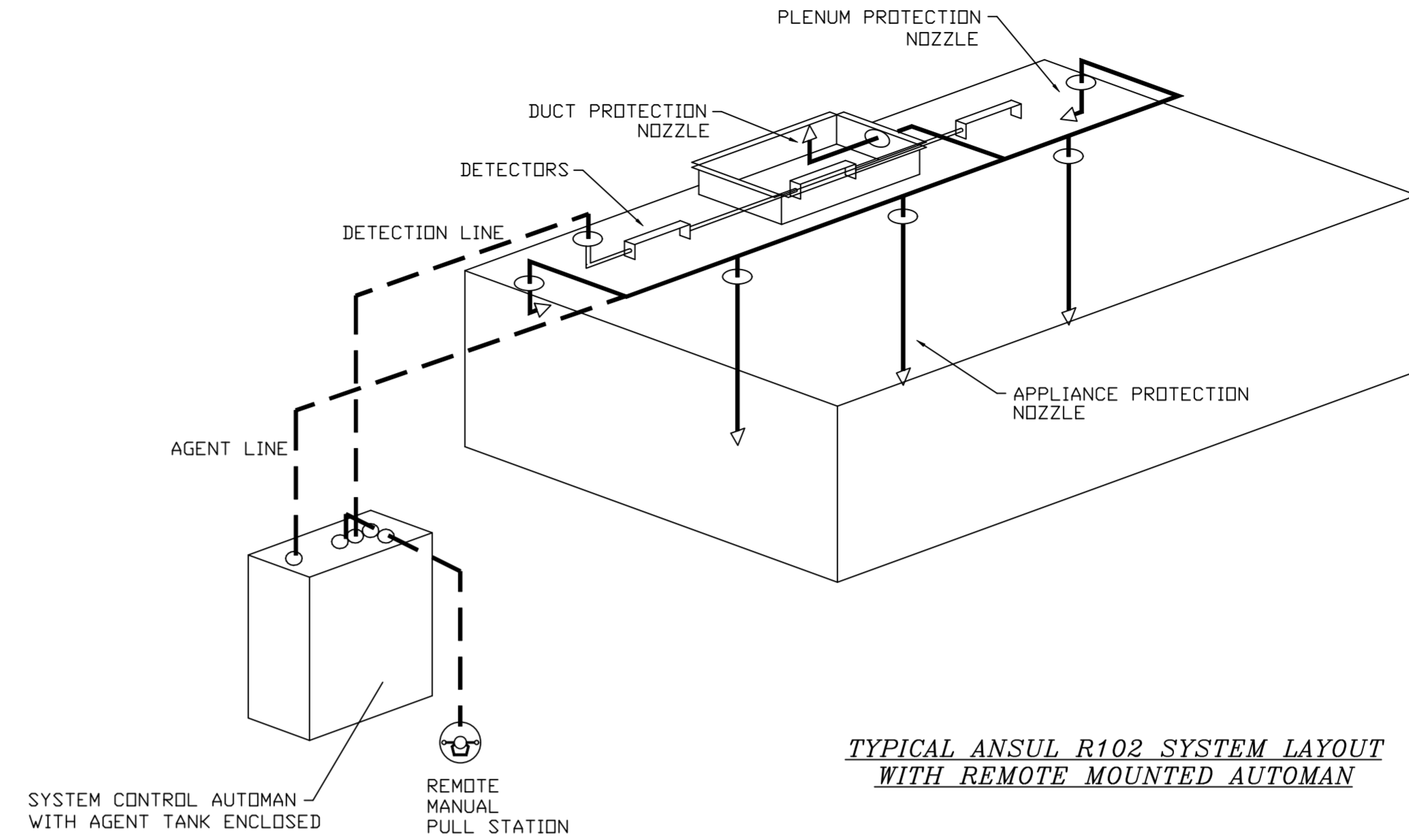
SHEET NO.
 2

FIRE SYSTEM INFORMATION - JOB#6028200

FIRE SYSTEM NO	TAG	TYPE	SIZE	FLOW POINTS	INSTALLATION	
					SYSTEM	LOCATION ON HOOD
1		ANSUL R102	3.0/3.0	14	WALL MOUNT LEFT	N/A
2		ANSUL R102	3.0	6	WALL MOUNT LEFT	N/A

FIRE SYSTEM PARTS LIST KEY

FIRE SYSTEM NO	TAG	KEY NUMBER - PART DESCRIPTION	QTY BY FACTORY	QTY BY DIST	
1		0 - 0 - 439861 LARGE BLOWOFF CAP, METAL, TO FIT NEW LASER-ETCHED ANSUL NOZZLES, A0024201.	6	0	
		1 - 1 - AT - 3.0 TANK(H1B) - 3.0 GALLON SS TANK (FOR USE WITH AUTOMAN RELEASE, ACTUATOR, DR SS ENCLOSURE (UL/ULC)) MACDLA # 01-429862.	0	2	
		2 - 2 - AP - AR AUTOMAN RELEASE - ANSUL AUTOMAN MECHANICAL RELEASE (UL). TANK SOLD SEPARATELY. ANSUL PART # 429853; MACDLA # 01-429853.	0	1	
		3 - 3 - AP - AE ENCLOSURE - STAINLESS STEEL ENCLOSURE ASSEMBLY (UL), ANSUL PART # 429870; MACDLA # 01-429870.	0	1	
		5 - 5 - LIQ-3.0 AGENT - ANSULEX LOW PH WET CHEMICAL AGENT, 3 GALLON (UL) 79372.	0	2	
		9 - 9 - 101-30 CARTRIDGE - CARBON DIOXIDE, 101-30, CARTRIDGE (R-102) 19-15851.	0	1	
		10 - 10 - TLINK LINK - TEST LINK (1 TEST LINK) ANSUL PART # 24916, MACDLA # 20-24916.	0	1	
		11 - 11 - MICRO-SDA MICROSWITCH KIT- INCLUDES 2 SWITCHES AND MOUNTING HARDWARE. SINGLE DUAL ELECTRIC SWITCH, ONE STANDARD SWITCH, ONE ALARM DUTY SWITCH ANSUL PART # 437155, MACDLA # 08-437155.	0	1	
		12 - 12 - HOSEGRDMMET HOSE - HOSE/GRDMMET PACKAGE.	0	1	
		14 - 14 - 419336 NOZZLE - 1W NOZZLE, DUCT/APPLIANCE (REPLACES ANSUL PART# 419347, CAS PART# 419336) A0001266.	1	0	
		16 - 16 - 419335 NOZZLE - 1N NOZZLE, PLENUM/APPLIANCE (REPLACES ANSUL PART# 419346, CAS PART# 419335) A0001265.	1	0	
		19 - 19 - 419338 NOZZLE - 3N NOZZLE, APPLIANCE (REPLACES ANSUL PART# 419349, CAS PART# 419338) A0001268.	4	0	
		25 - 25 - 418569 NOZZLE ADAPTOR - SWIVEL NOZZLE ADAPTOR (REPLACES CAS PART # 418569) A0001274.	4	0	
		26 - 26 - QSA-3/8 QUIK SEAL - 3/8" (UL).	6	0	
		27 - 27 - QPSA-1/2 PULLEY SEAL - 1/2" HOOD SEAL (UL) ANSUL PART # 423253, MACDLA # 32-79768.	1	0	
		28 - 28 - S-DET DETECTOR - SERIES (SCISSOR LINKAGE) ANSUL PART # 435547/435548 (OLD # 417369/434480); MACDLA # 05-417369.	3	0	
		30 - 30 - ANS-500FL FUSIBLE LINK - 500DEG F, R-102 AND PIRANHA, ANSUL PART # 439232.	3	0	
		34 - 34 - RPS-A REMOTE PULL STATION - RED COMPOSITE (WITHOUT WIRE ROPE) 434618 (OLD MACDLA #06-4835).	0	1	
		35 - 35 - PE-LT PULLEY ELBOW - LOW TEMP. PULLEY ELBOW, SET SCREW TYPE ANSUL PART # 415670, MACDLA # 11-415671.	0	10	
		36 - 36 - PE-HT PULLEY ELBOW - HIGH TEMP PULLEY ELBOW, COMPRESSION TYPE, ANSUL PART # 423251, MACDLA # 10-45771.	1	0	
	2		0 - 0 - 439861 LARGE BLOWOFF CAP, METAL, TO FIT NEW LASER-ETCHED ANSUL NOZZLES, A0024201.	4	0
			1 - 1 - AT - 3.0 TANK(H1B) - 3.0 GALLON SS TANK (FOR USE WITH AUTOMAN RELEASE, ACTUATOR, DR SS ENCLOSURE (UL/ULC)) MACDLA # 01-429862.	0	1
			2 - 2 - AP - AR AUTOMAN RELEASE - ANSUL AUTOMAN MECHANICAL RELEASE (UL). TANK SOLD SEPARATELY. ANSUL PART # 429853; MACDLA # 01-429853.	0	1
			5 - 5 - LIQ-3.0 AGENT - ANSULEX LOW PH WET CHEMICAL AGENT, 3 GALLON (UL) 79372.	0	1
			7 - 7 - 101-20 CARTRIDGE - CARBON DIOXIDE 101-20, 3 GALLON CARTRIDGE (R-102).	0	1
			10 - 10 - TLINK LINK - TEST LINK (1 TEST LINK) ANSUL PART # 24916, MACDLA # 20-24916.	0	1
			11 - 11 - MICRO-SDA MICROSWITCH KIT- INCLUDES 2 SWITCHES AND MOUNTING HARDWARE. SINGLE DUAL ELECTRIC SWITCH, ONE STANDARD SWITCH, ONE ALARM DUTY SWITCH ANSUL PART # 437155, MACDLA # 08-437155.	0	1
			14 - 14 - 419336 NOZZLE - 1W NOZZLE, DUCT/APPLIANCE (REPLACES ANSUL PART# 419347, CAS PART# 419336) A0001266.	1	0
			16 - 16 - 419335 NOZZLE - 1N NOZZLE, PLENUM/APPLIANCE (REPLACES ANSUL PART# 419346, CAS PART# 419335) A0001265.	1	0
			23 - 23 - 419342 NOZZLE - 290 NOZZLE, APPLIANCE (REPLACES ANSUL PART# 419353, CAS PART# 419342) A0001272.	2	0
			25 - 25 - 418569 NOZZLE ADAPTOR - SWIVEL NOZZLE ADAPTOR (REPLACES CAS PART # 418569) A0001274.	2	0
			26 - 26 - QSA-3/8 QUIK SEAL - 3/8" (UL).	4	0
			27 - 27 - QPSA-1/2 PULLEY SEAL - 1/2" HOOD SEAL (UL) ANSUL PART # 423253, MACDLA # 32-79768.	1	0
			28 - 28 - S-DET DETECTOR - SERIES (SCISSOR LINKAGE) ANSUL PART # 435547/435548 (OLD # 417369/434480); MACDLA # 05-417369.	3	0
			29 - 29 - ANS-360FL FUSIBLE LINK - 360DEG F, R-102 AND PIRANHA, ANSUL PART # 439088.	3	0
			34 - 34 - RPS-A REMOTE PULL STATION - RED COMPOSITE (WITHOUT WIRE ROPE) 434618 (OLD MACDLA #06-4835).	0	1
		35 - 35 - PE-LT PULLEY ELBOW - LOW TEMP. PULLEY ELBOW, SET SCREW TYPE ANSUL PART # 415670, MACDLA # 11-415671.	0	10	
	36 - 36 - PE-HT PULLEY ELBOW - HIGH TEMP PULLEY ELBOW, COMPRESSION TYPE, ANSUL PART # 423251, MACDLA # 10-45771.	1	0		
	ADDITIONAL PARTS TO BE DETERMINED...				



REVISIONS	
DESCRIPTION	DATE

Florida National Accounts
www.captivefire.com
235 N Hunt Club Blvd., STE 201, Longwood, FL 32779 PHONE: (407) 882-3100 FAX: 9192275913 EMAIL: reg60@captivefire.com

CULVERS PADDOCK LAKE WI
SALEM, WI, 53168

DATE: 7/19/2023
DWG.#: 6028200
DRAWN BY: sluddyjr
SCALE: 3/4" = 1'-0"
MASTER DRAWING

SHEET NO.
3

EXHAUST FAN INFORMATION - JOB#6028200

FAN UNIT NO	TAG	QTY	FAN UNIT MODEL #	MANUFACTURER	CFM	ESP	RPM	MOTOR ENCL	HP	BHP	PHASE	VOLT	FLA	DISCHARGE VELOCITY	WEIGHT (LBS)	SDNES
1	PRV-1 RESTROOM	1	DR12HFA	CAPTIVEAIRE	300	0.500	1888	TEAD-ECM	0.250	0.0920	1	115	2.9		50	6.1
2	PRV-2	1	DUB5HFA	CAPTIVEAIRE	1500	1.412	1406	TEAD-ECM	1.000	0.5330	1	115	11.6	475 FPM	98	12.3
3	PRV-3	1	DUB5HFA	CAPTIVEAIRE	1500	1.250	1348	TEAD-ECM	1.000	0.4700	1	115	11.6	475 FPM	98	11.3
4	EF-1	2	CFA 100CA	CAPTIVEAIRE	75	0.125	493	GENERAL PURPOSE	0.116	0.0510	1	115	1.1		25	N/A

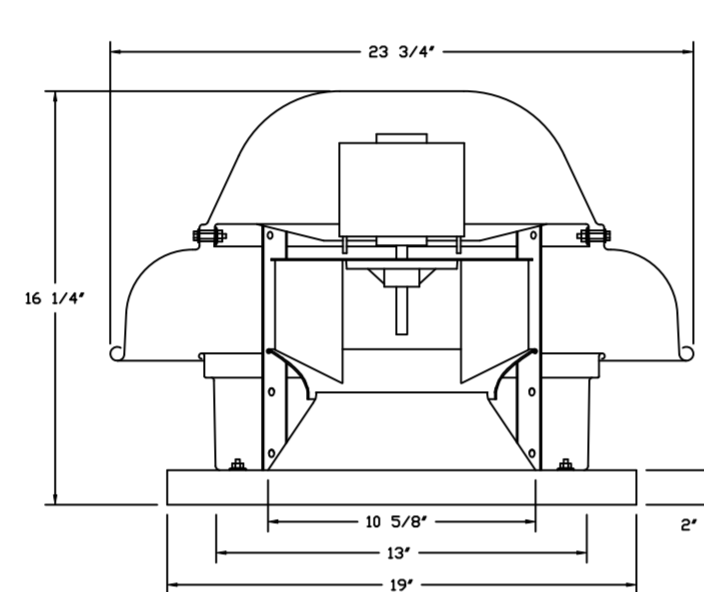
DOAS/RTU FAN SCHEDULE - JOB#6028200

FAN UNIT NO	TAG	QTY	DOAS/RTU MODEL #	MANUFACTURER	BLOWER	RETURN AIR CFM	MAX OUTSIDE AIR CFM	TOTAL CFM	WEIGHT (LBS)	ELECTRICAL INFORMATION				COOLING INFORMATION				REHEAT INFORMATION				GAS HEAT INFORMATION				NOTES											
										ESP	HP	PHASE	VOLT	NCA	MOCF	DB	WB	DB	WB	DB	WB	DB	WB	DB	WB		DB	WB	DB	WB	DB	WB					
5	RTU-1 DINING	1	CASRTU3-1400-24-20T	CAPTIVEAIRE	24MF-3-RTU	4400	1750	6150	2727	0.600	10.00	3	208	104.1A	125A	81.9°F	75.7°F	76.9°F	66.3°F	53.1°F	53.1°F	53.2°F	2380 MBH	154.4 MBH	18.2	6.0	70.0°F	59.9°F	113.9 MBH	29.6 MBH	76.7 LBS/HR	NATURAL	309877	251000	33°F	7 IN. W.C. - 14 IN. W.C.	1,2,3,4,5,6,7,8,9,10,11,12,13,14,15,16,17,18
6	RTU-2 KITCHEN	1	CASRTU3-1250-24-20T	CAPTIVEAIRE	24MF-3-RTU	4525	1700	6225	2711	0.575	10.00	3	208	104.1A	125A	81.6°F	75.8°F	76.8°F	66.2°F	53.1°F	53.1°F	53.2°F	2382 MBH	155.1 MBH	18.2	6.0	70.0°F	59.7°F	115.3 MBH	29.6 MBH	76.5 LBS/HR	NATURAL	237037	192000	25°F	7 IN. W.C. - 14 IN. W.C.	1,2,3,4,5,6,7,8,9,10,11,12,13,14,15,16,17,18

FAN OPTIONS

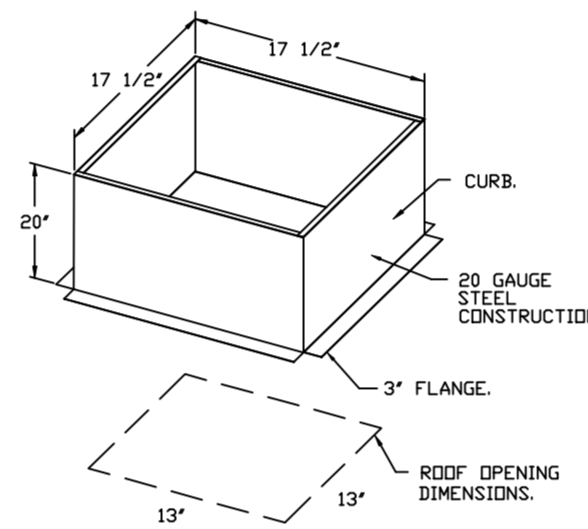
FAN UNIT NO	TAG	QTY	DESCRIPTION
1	PRV-1 RESTROOM	1	ECM WIRING PACKAGE - EXHAUST - MANUAL DR 0-10VDC REFERENCE SPEED CONTROL -MSC- (TELCD), CCW ROTATION
		1	1.12-BDD DAMPER
2	PRV-2	1	2 YEAR PARTS WARRANTY
		1	GREASE BOX
3	PRV-3	1	FAN BASE CERAMIC SEAL - SHIP LOOSE - FOR GREASE DUCTS
		1	ECM WIRING PACKAGE - MANUAL DR 0-10VDC REFERENCE SPEED CONTROL -RTC- (TELCD MOTOR), CCW ROTATION
4	EF-1	2	MGI - METAL GRILLE KIT
		2	2 YEAR PARTS WARRANTY
5	RTU-1 DINING	1	RTU HEATED FURNACE CONDENSATE DRAIN KIT. REQUIRED FOR WINTER DESIGN TEMP OF 0 DEGREES F AND LOWER
		1	INLET PRESSURE GAUGE, 0-35"
		1	MANIFOLD PRESSURE GAUGE, 0 TO 10" WC, 1 FURNACE
		1	SHIP LOOSE GAS STRAINER 1"
		1	CASLINK BUILDING MONITORING SYSTEM - INTERNET OR CELLULAR CONNECTION REQUIRED
		1	LDW AMBIENT COOLING OPERATION - DOWN TO OF AMBIENT
		1	RTU3 DOWN DISCHARGE, 400, 500 MBH
		1	2" MERV 13 FILTERS FOR RTU3 (QTY. 4)
		1	2" MERV 8 FILTERS FOR RTU3 (QTY. 4)
		1	DVERHEAT STAT
		1	CONTROL PANEL ENCLOSURE HEATER 100W - RECOMMENDED FOR WINTER DESIGN TEMPERATURES LESS THAN 0°F
		1	REMOTE TEMPERATURE AND HUMIDITY SPACE SENSOR
		1	OCCUPIED SCHEDULING
		1	RTU3 CONVENIENCE OUTLET (GFCI), 15 AMP - REQUIRES SEPARATE 120V CONNECTION. INCLUDES RECEPTACLE, COVER AND J-BOX
		1	20 TON MODULATING COOLING OPTION, 208/230V. R410A REFRIGERANT, VARIABLE SPEED COMPRESSOR, ECM CONDENSING FANS
		1	20 TON MODULATING REHEAT OPTION - SPACE DEWPOINT CONTROL
		1	RTU3 ECONOMIZER BARDMETRIC RELIEF
1	RTU3 HAIL GUARD		
6	RTU-2 KITCHEN	1	RTU INTAKE/RETURN DAMPER - MANUAL CONTROL VIA HMI
		1	RTU3 DOWN RETURN
		1	RTU3 CURB DUCT HANGER
		1	VAV PACKAGE W/ MANUAL/DDC CONTROL (S71 VFD INCLUDED)
		1	RTU RETURN MOUNTED SMOKE DETECTOR AND SAMPLING TUBE - FACTORY INSTALLED
		1	RTU ECONOMIZER - FIXED ENTHALPY CONTROL
		1	24VAC FIRE INPUT
		1	UNIT MOUNTED VFD CONFIGURED FOR DCV
		1	5 YEAR ENTIRE UNIT PARTS WARRANTY, 10 YEAR ENTIRE UNIT PARTS WARRANTY WITH REMOTE MONITORING AND CAPTIVEAIRE SERVICE CONTRACT, 25 YEAR STAINLESS STEEL FURNACE PARTS WARRANTY (SEE ADDITIONAL DETAILS)
		1	RTU HEATED FURNACE CONDENSATE DRAIN KIT. REQUIRED FOR WINTER DESIGN TEMP OF 0 DEGREES F AND LOWER
		1	INLET PRESSURE GAUGE, 0-35"
		1	MANIFOLD PRESSURE GAUGE, 0 TO 10" WC, 1 FURNACE
		1	SHIP LOOSE GAS STRAINER 1"
		1	CASLINK BUILDING MONITORING SYSTEM - INTERNET OR CELLULAR CONNECTION REQUIRED
		1	LDW AMBIENT COOLING OPERATION - DOWN TO OF AMBIENT
		1	RTU3 DOWN DISCHARGE
		1	2" MERV 13 FILTERS FOR RTU3 (QTY. 4)
1	2" MERV 8 FILTERS FOR RTU3 (QTY. 4)		
1	DVERHEAT STAT		
1	CONTROL PANEL ENCLOSURE HEATER 100W - RECOMMENDED FOR WINTER DESIGN TEMPERATURES LESS THAN 0°F		
1	REMOTE TEMPERATURE AND HUMIDITY SPACE SENSOR		
1	OCCUPIED SCHEDULING		
1	RTU3 CONVENIENCE OUTLET (GFCI), 15 AMP - REQUIRES SEPARATE 120V CONNECTION. INCLUDES RECEPTACLE, COVER AND J-BOX		
1	20 TON MODULATING COOLING OPTION, 208/230V. R410A REFRIGERANT, VARIABLE SPEED COMPRESSOR, ECM CONDENSING FANS		
1	20 TON MODULATING REHEAT OPTION - SPACE DEWPOINT CONTROL		
1	RTU3 ECONOMIZER BARDMETRIC RELIEF		
1	RTU3 HAIL GUARD		
1	RTU INTAKE/RETURN DAMPER - MANUAL CONTROL VIA HMI		
1	RTU3 DOWN RETURN		
1	RTU3 CURB DUCT HANGER		
1	VAV PACKAGE W/ MANUAL/DDC CONTROL (S71 VFD INCLUDED)		
1	RTU RETURN MOUNTED SMOKE DETECTOR AND SAMPLING TUBE - FACTORY INSTALLED		
1	RTU ECONOMIZER - FIXED ENTHALPY CONTROL		
1	24VAC FIRE INPUT		
1	UNIT MOUNTED VFD CONFIGURED FOR DCV		
1	5 YEAR ENTIRE UNIT PARTS WARRANTY, 10 YEAR ENTIRE UNIT PARTS WARRANTY WITH REMOTE MONITORING AND CAPTIVEAIRE SERVICE CONTRACT, 25 YEAR STAINLESS STEEL FURNACE PARTS WARRANTY (SEE ADDITIONAL DETAILS)		

FAN #1 DR12HFA - EXHAUST FAN (PRV-1 RESTROOM)

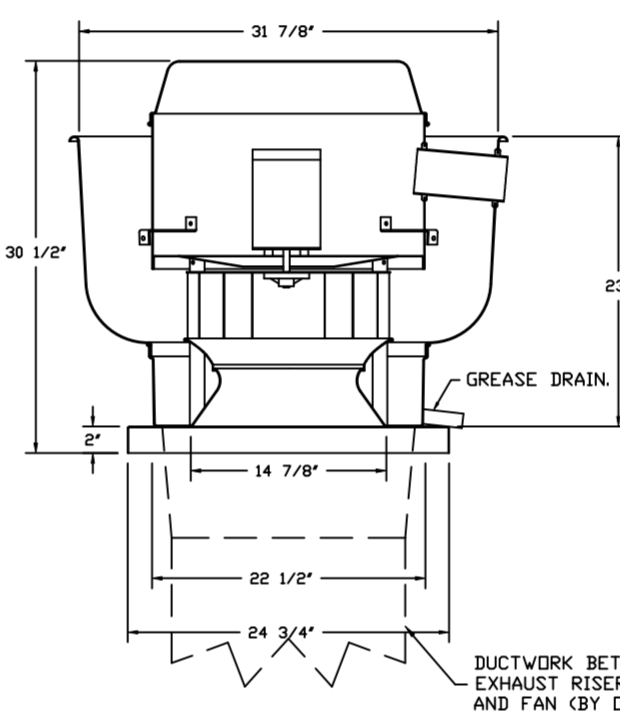


TOP VIEW

- FEATURES:**
- DIRECT DRIVE CONSTRUCTION (NO BELTS/PULLEYS).
 - ROOF MOUNTED FANS.
 - UL705.
 - SAFETY DISCONNECT.
 - STANDARD BIRD SCREEN.
 - SPEED CONTROL.
 - THERMAL OVERLOAD PROTECTION (SINGLE PHASE).
- OPTIONS:**
- ECM WIRING PACKAGE - EXHAUST - MANUAL DR 0-10VDC REFERENCE SPEED CONTROL -MSC- (TELCD), CCW ROTATION.
 - 1.12-BDD DAMPER.
 - 2 YEAR PARTS WARRANTY.

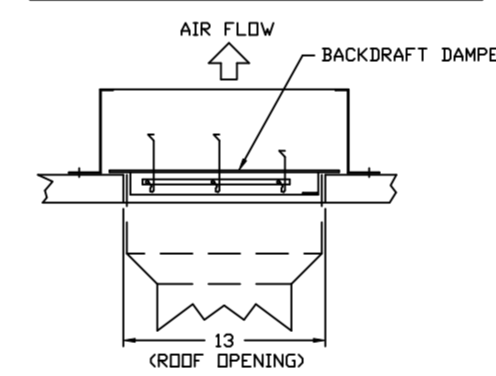


FANS #2 (PRV-2), #3 (PRV-3) - DUB5HFA EXHAUST FAN



TOP VIEW

BACKDRAFT DAMPER INSTALLATION

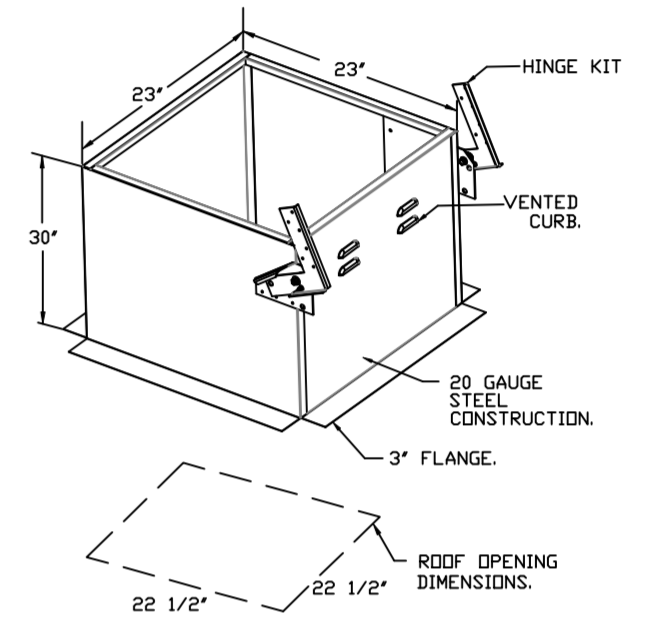


- FEATURES:**
- DIRECT DRIVE CONSTRUCTION (NO BELTS/PULLEYS).
 - ROOF MOUNTED FANS.
 - RESTAURANT MODEL.
 - UL705 AND UL765 AND UL-C-5645
 - VARIABLE SPEED CONTROL.
 - INTERNAL WIRING.
 - THERMAL OVERLOAD PROTECTION (SINGLE PHASE).
 - HIGH HEAT OPERATION 300°F (149°C).
 - GREASE CLASSIFICATION TESTING.
 - NEMA 3R SAFETY DISCONNECT SWITCH.

NORMAL TEMPERATURE TEST:
EXHAUST FAN MUST OPERATE CONTINUOUSLY WHILE EXHAUSTING AIR AT 300°F (149°C) UNTIL ALL FAN PARTS HAVE REACHED THERMAL EQUILIBRIUM AND WITHOUT ANY DETERIORATING EFFECTS TO THE FAN WHICH WOULD CAUSE UNSAFE OPERATION.

ABNORMAL FLARE-UP TEST:
EXHAUST FAN MUST OPERATE CONTINUOUSLY WHILE EXHAUSTING BURNING GREASE VAPORS AT 600°F (315°C) FOR A PERIOD OF 15 MINUTES WITHOUT THE FAN BECOMING DAMAGED TO ANY EXTENT THAT COULD CAUSE AN UNSAFE CONDITION.

- OPTIONS:**
- GREASE BOX.
 - FAN BASE CERAMIC SEAL - SHIP LOOSE FOR GREASE DUCTS.
 - ECM WIRING PACKAGE - MANUAL DR 0-10VDC REFERENCE SPEED CONTROL -RTC- (TELCD MOTOR), CCW ROTATION.
 - 2 YEAR PARTS WARRANTY.

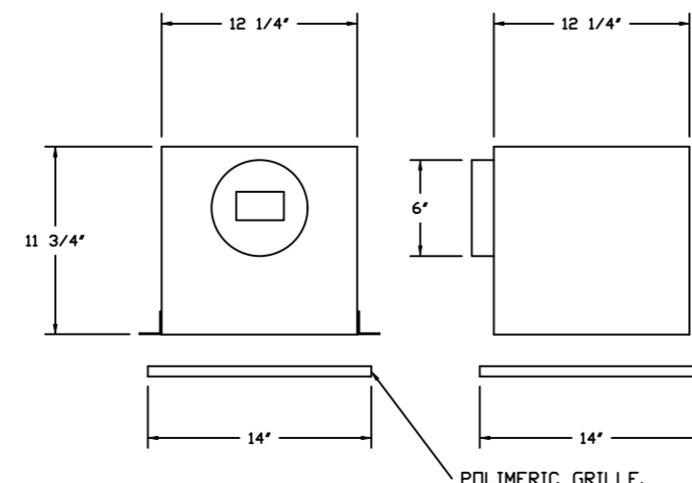


FAN ACCESSORIES

FAN UNIT NO	TAG	EXHAUST			SUPPLY		
		GREASE CUP	GRAVITY DAMPER	WALL MOUNT DISCHARGE	GRAVITY DAMPER	MOTORIZED DAMPER	WALL MOUNT
1	PRV-1 RESTROOM		YES				
2	PRV-2	YES					
3	PRV-3	YES					
4	EF-1						

CURB ASSEMBLIES

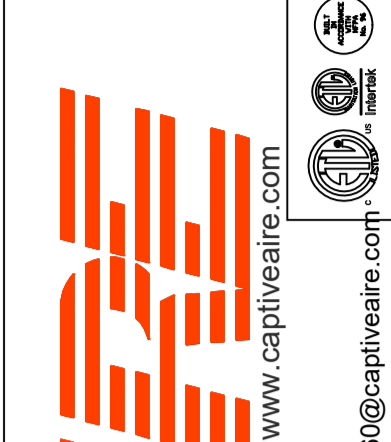
NO	DN FAN	TAG	WEIGHT	ITEM	SIZE
1	# 1	PRV-1 RESTROOM	25 LBS	CURB	17.500"W X 17.500"L X 20.000"H
2	# 2	PRV-2	49 LBS	CURB	23.000"W X 23.000"L X 30.000"H VENTED HINGED.
3	# 3	PRV-3	49 LBS	CURB	23.000"W X 23.000"L X 30.000"H VENTED HINGED.
5	# 5	RTU-1 DINING	104 LBS	CURB	59.500"W X 91.000"L X 14.000"H 0.250/12.000 PITCH ALONG WIDTH, RIGHT INSULATED.
6	# 6	RTU-2 KITCHEN	104 LBS	CURB	59.500"W X 91.000"L X 14.000"H 0.250/12.000 PITCH ALONG WIDTH, RIGHT INSULATED.



- FEATURES:**
- 1/2" ACOUSTIC HOUSING INSULATION.
 - 20 GA. GALVANIZED STEEL HOUSING.
 - PLUG TYPE DISCONNECT.
 - BUILT IN AUTOMATIC BACKDRAFT DAMPER.
 - AMCA SOUND & AIR CERTIFIED.
 - UL LISTED.
 - CAN BE INSTALLED IN CEILING OR WALL.
 - 8 POSITION MOUNTING BRACKETS.
- OPTIONS:**
- MGI - METAL GRILLE KIT.
 - 2 YEAR PARTS WARRANTY.

REVISIONS

DESCRIPTION	DATE:



CAPTIVEAIR
www.captiveaire.com

Florida National Accounts
235 N Hunt Club Blvd., STE 201, Longwood, FL 32779 PHONE: (407) 682-3100 FAX: 9192275913 EMAIL: reg60@captiveaire.com

CULVERS PADDOCK LAKE WI
SALEM, WI, 53168

DATE: 7/19/2023

DWG.#:
6028200

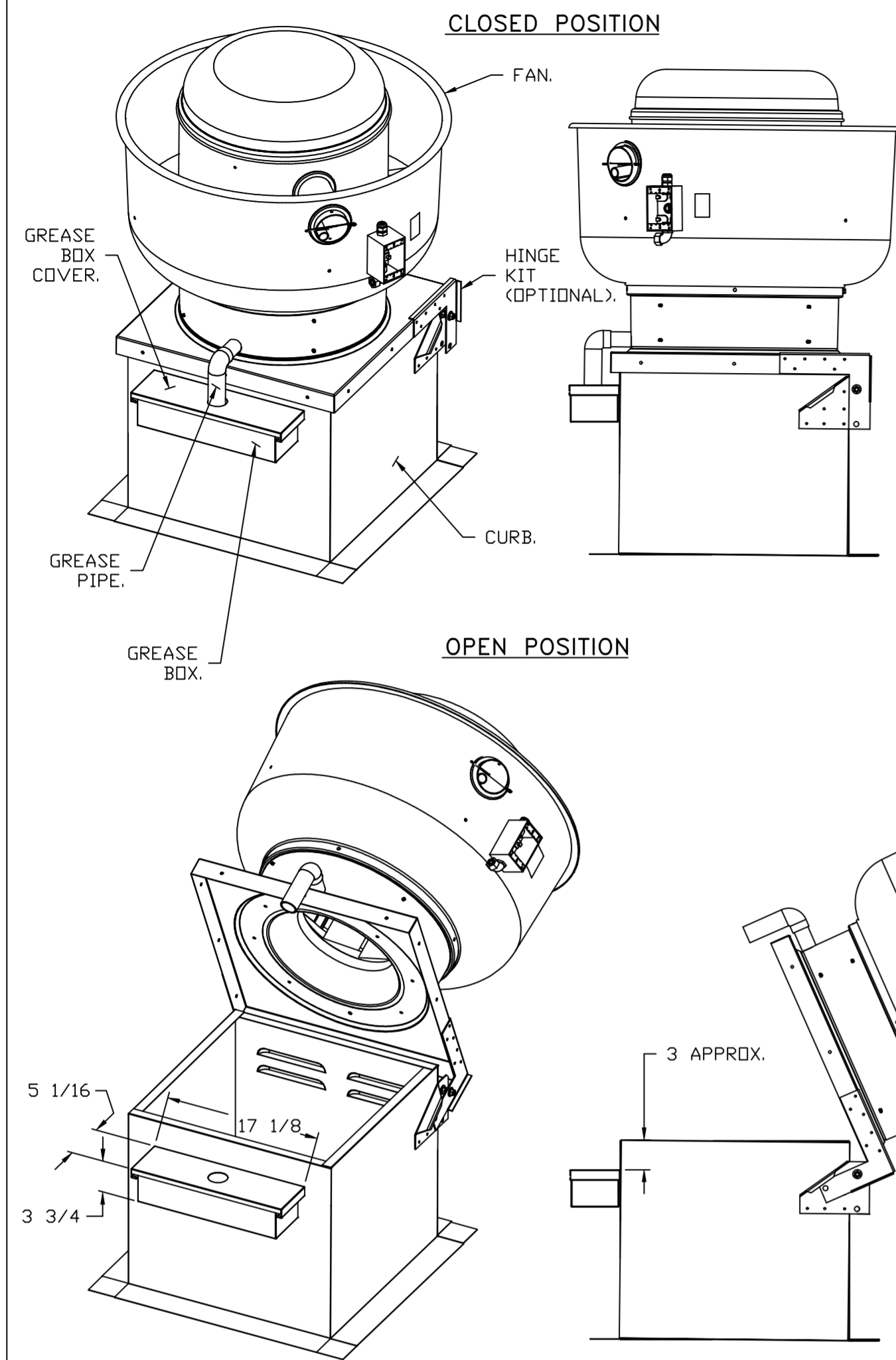
DRAWN BY: sluddyjr

SCALE:
1/2" = 1'-0"

MASTER DRAWING

SHEET NO.
4

GREASE BOX INSTALLATION



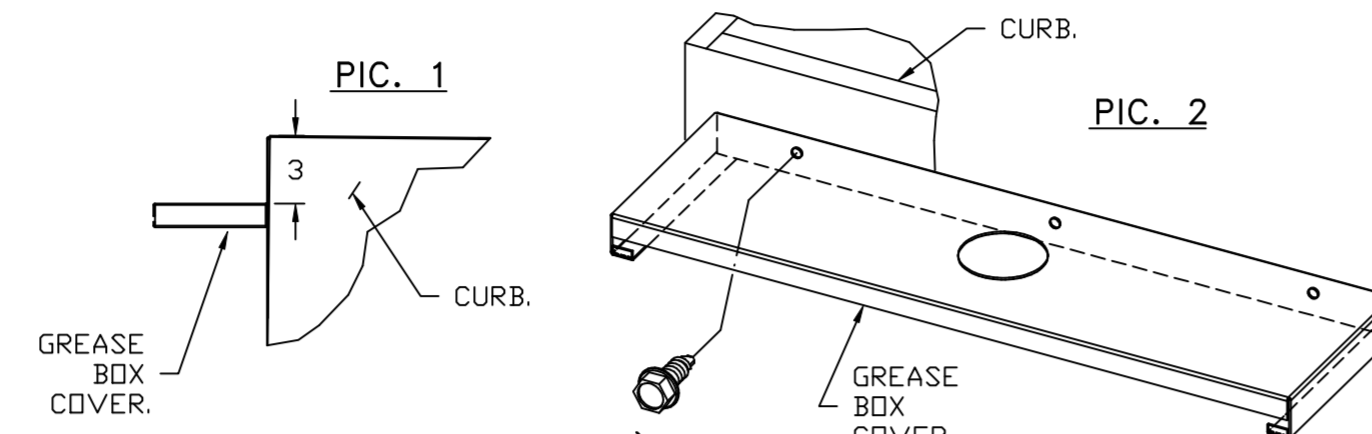
PARTS INCLUDED

GREASE BOX.
GREASE BOX COVER.
GREASE PIPE.
SHEET METAL SCREWS
3 - LONG (3/4" LG.).

GREASE BOX FIELD INSTALLATION

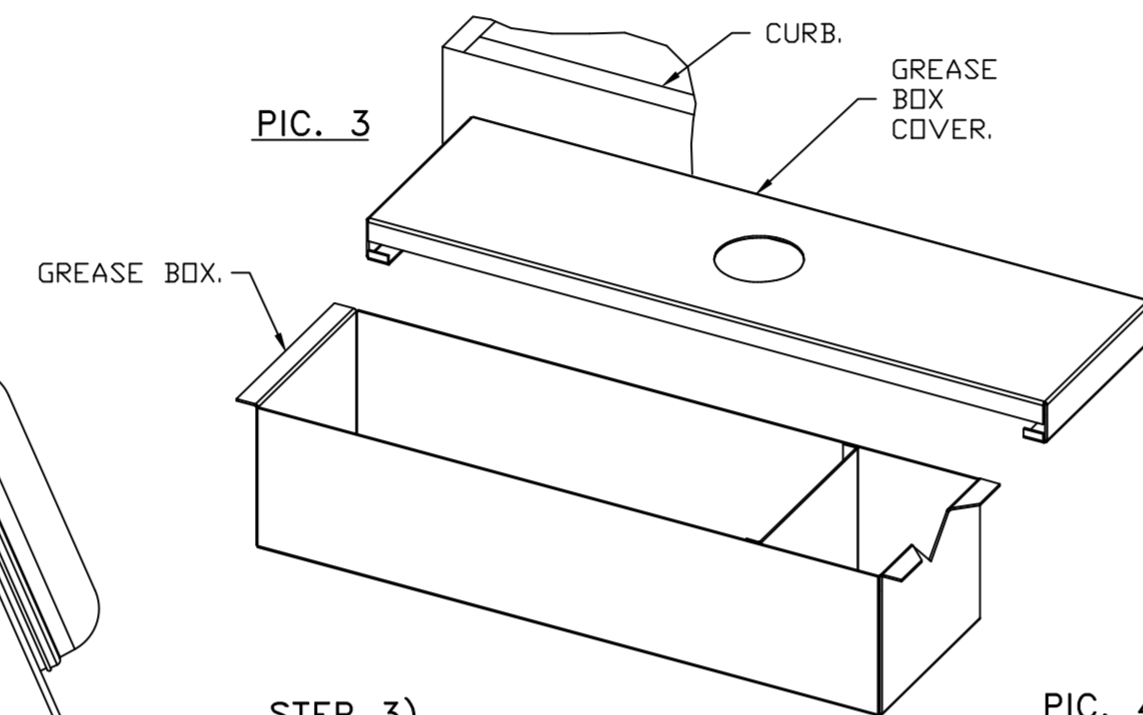
STEP 1)

ATTACH GREASE BOX COVER TO THE CURB, HOLD 3" DIMENSION AS SHOWN ON PIC. 1. SCREW GREASE BOX COVER TO CURB USING (3) LONG (3/4" LG.) SCREWS AS SHOWN ON PIC. 2.



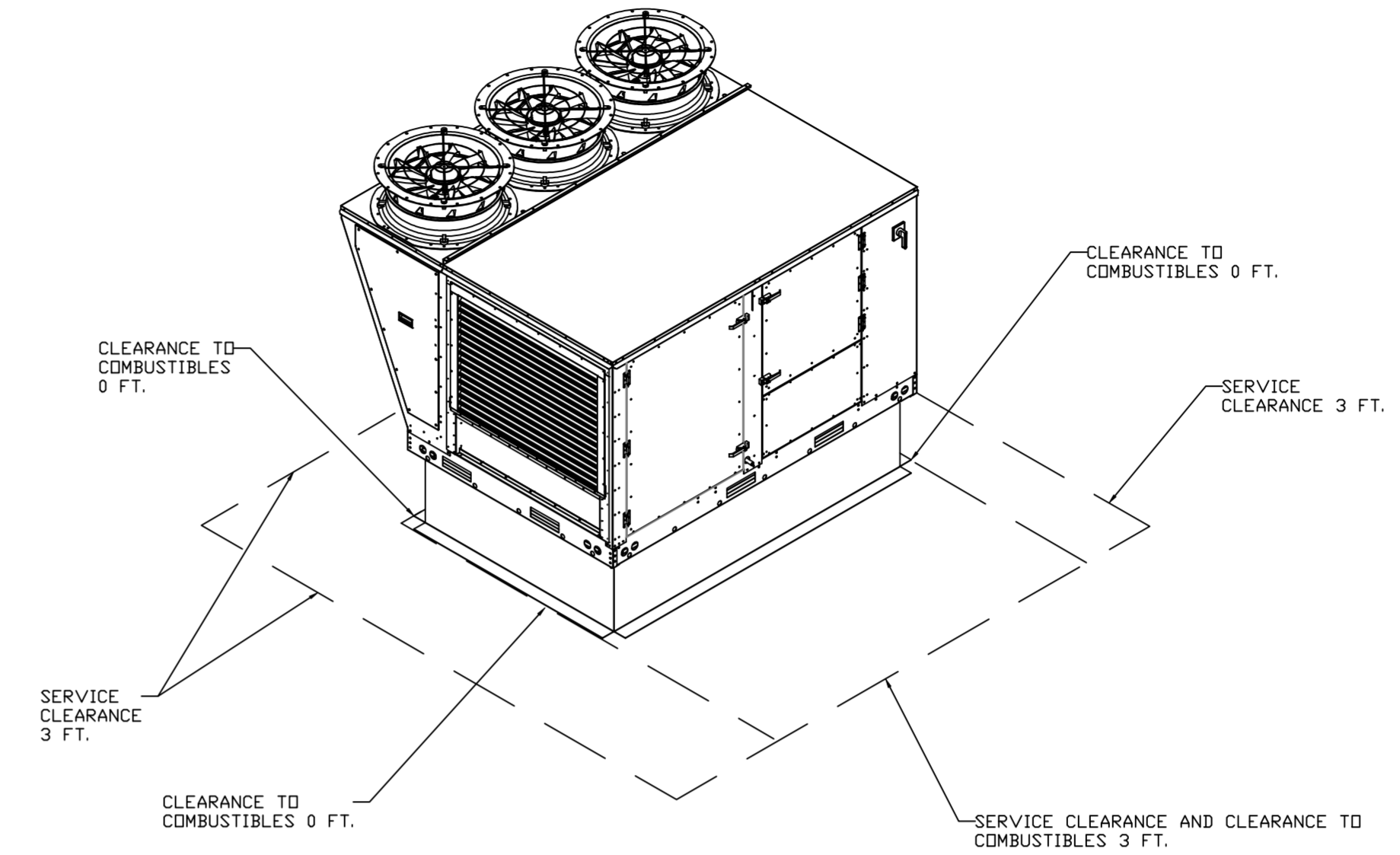
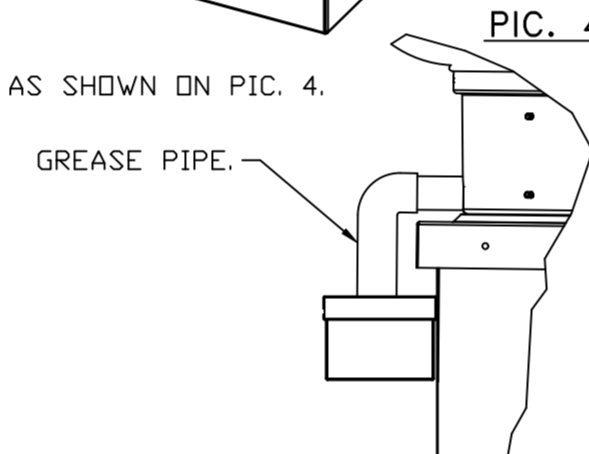
STEP 2)

ATTACH GREASE BOX TO GREASE BOX COVER, SLIDE AND DROP AS SHOWN ON PIC. 3.



STEP 3)

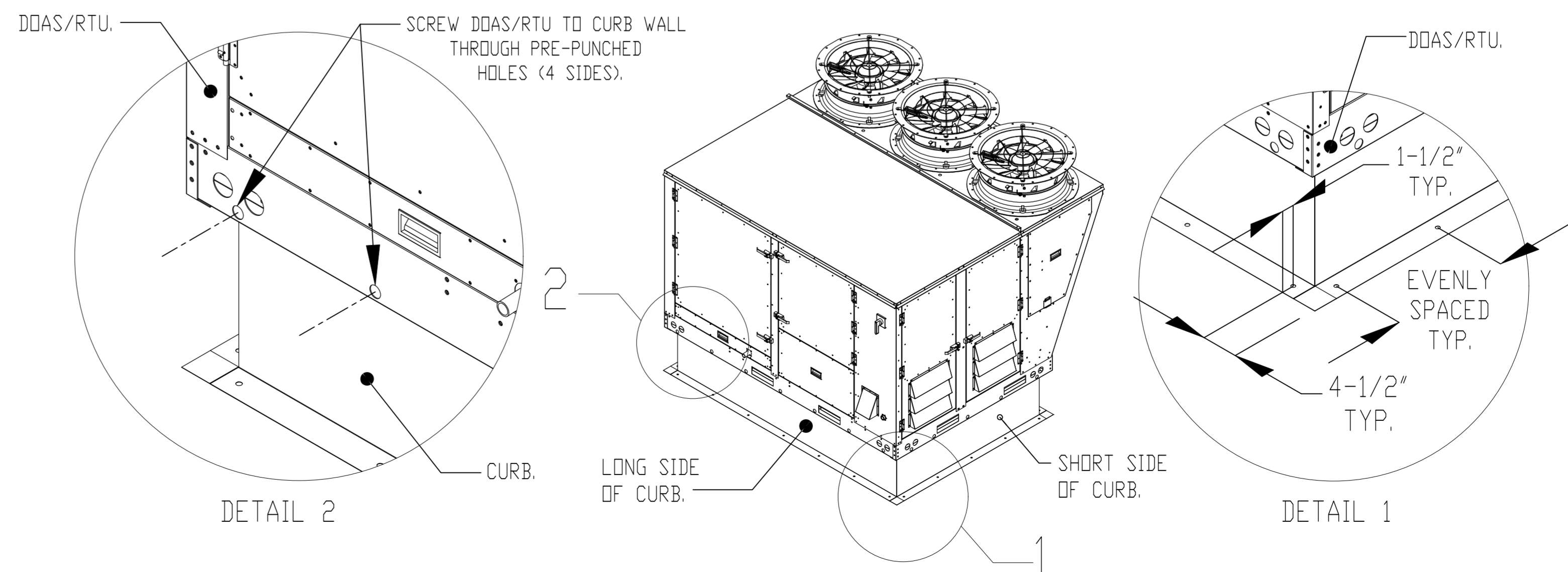
INSTALL GREASE PIPE AS SHOWN ON PIC. 4.



*NOTE: UL 705 INSTALL.

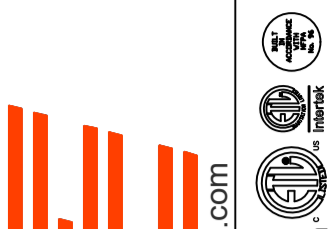
TYPICAL DOAS/RTU ROOF MOUNTING INSTALLATION INSTRUCTIONS

1. SECURE THE CURB TO THE ROOF FRAMING MEMBERS BY DRILLING 1/4" PILOT HOLES IN THE CURB FLANGES AT LOCATIONS SHOWN IN THE DIAGRAM BELOW. USING 3/8" X 2" ZINC PLATED STEEL LAG BOLTS, AND ZINC PLATED WASHERS, SCREW THROUGH THE CURB FLANGES AND INTO THE ROOF FRAMING MEMBERS. A MINIMUM OF (5) LAG BOLTS ON EACH SHORT SIDE, AND (7) LAG BOLTS ON EACH LONG SIDE IS REQUIRED.
2. SECURE THE UNIT BASE TO THE SIDE WALLS OF THE CURB USING (24) 1/4"-14 X 2" SELF-DRILLING, STEEL ZINC PLATED SCREWS. PRE-PUNCHED HOLES HAVE BEEN PROVIDED FOR EACH SCREW LOCATION.



REVISIONS

DESCRIPTION	DATE



www.captiveair.com

Florida National Accounts

238 N Hunt Club Blvd., STE 201, Longwood, FL 32779 PHONE: (407) 882-3100 FAX: 9192275913 EMAIL: reg60@captiveair.com

CAPTIVE AIR

CULVERS PADDOCK LAKE WI

SALEM, WI, 53168

DATE: 7/19/2023

DWG.#: 6028200

DRAWN BY: sluddy jr

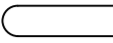
SCALE: 3/4" = 1'-0"

MASTER DRAWING

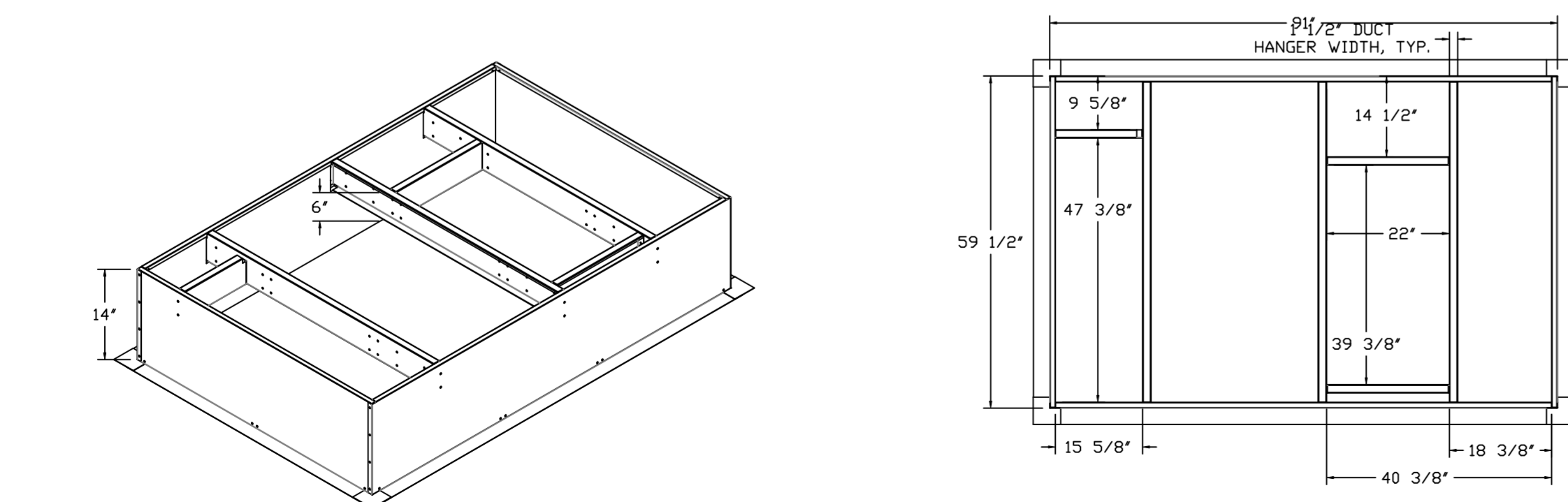
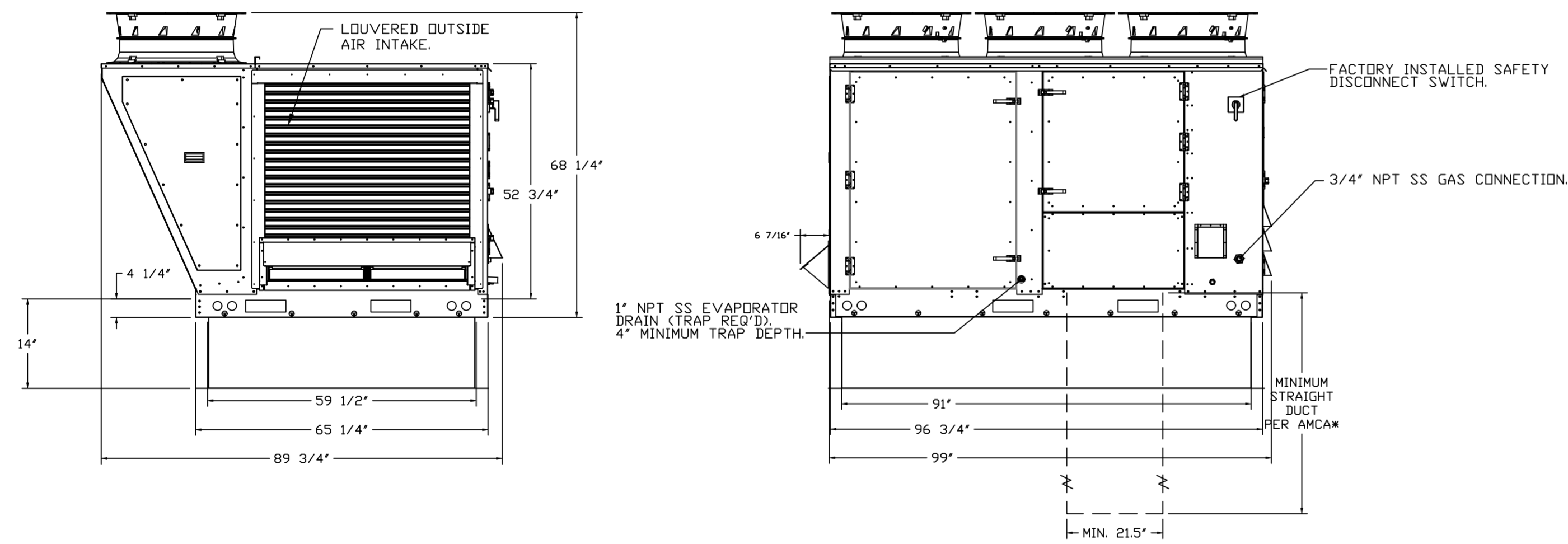
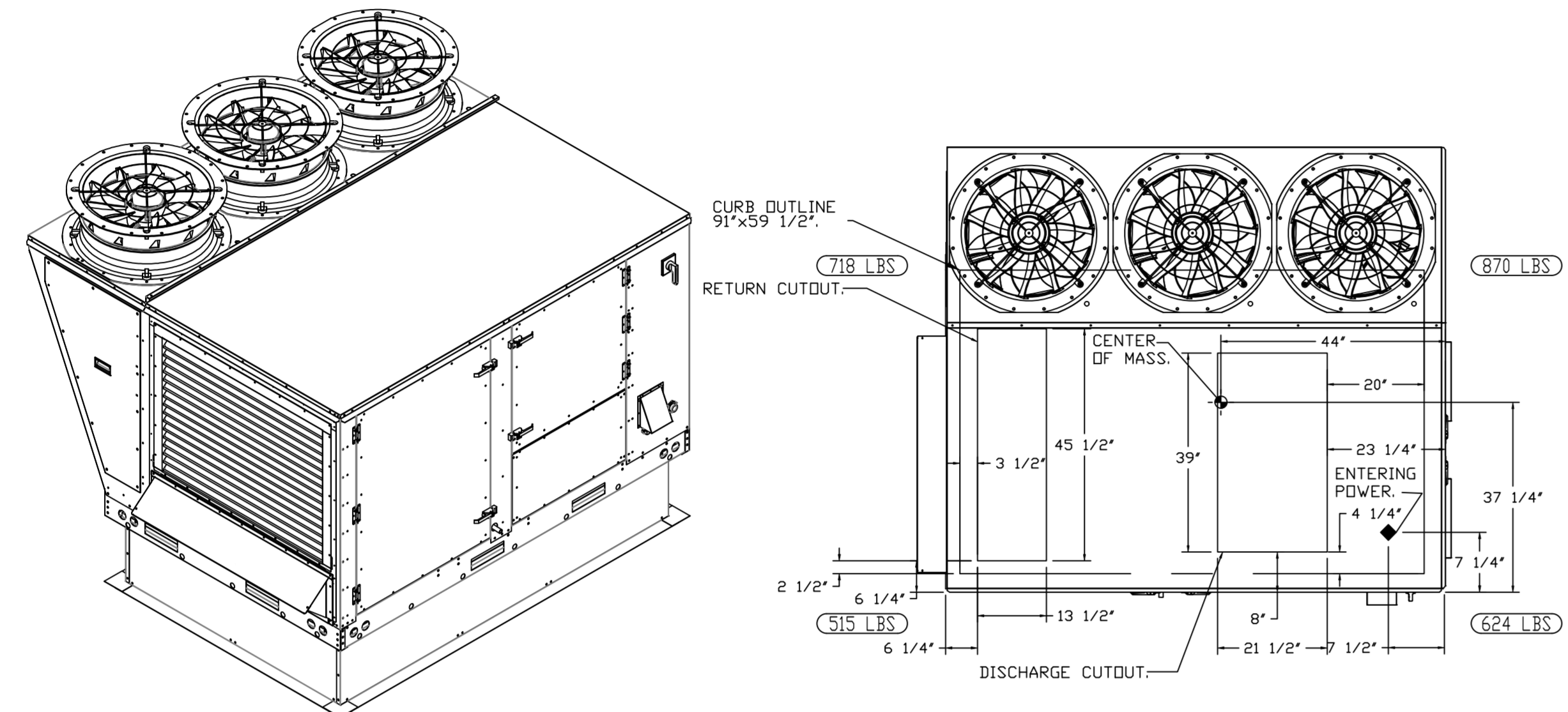
SHEET NO. 5

FAN #5 CASRTU3-I.400-24MF-20T - HEATER (RTU-1 DINING)

NOTES:

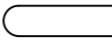
- DO NOT OBSTRUCT OUTSIDE AIR INLET, OUTSIDE AIR COIL OR OUTSIDE AIR FAN.
-  DENOTES CORNER WEIGHT.
- ROOF OPENING MUST BE 2" SMALLER THAN CURB DIMENSIONS IN BOTH DIRECTIONS.

*NOTE: SUPPLY DUCT MUST BE INSTALLED TO MEET SMACNA STANDARDS. A MINIMUM STRAIGHT DUCT LENGTH MUST BE MAINTAINED DOWNSTREAM OF UNIT DISCHARGE AS OUTLINED IN AMCA PUBLICATION 201. WHEN USING RECTANGULAR DUCTWORK, ELBOWS MUST BE RADIUS THROAT, RADIUS BACK WITH TURNING VANES. FLEXIBLE DUCTWORK AND SQUARE THROAT/SQUARE BACK ELBOWS SHOULD NOT BE USED. ANY TRANSITION AND/OR TURNS IN THE DUCTWORK WILL CAUSE SYSTEM EFFECT. SYSTEM EFFECT WILL DRASTICALLY INCREASE STATIC PRESSURE AND REDUCE AIRFLOW. DO NOT RELY ON UNIT TO SUPPORT DUCT IN ANY WAY. FAILURE TO PROPERLY SIZE DUCTWORK MAY CAUSE SYSTEM EFFECTS AND REDUCE PERFORMANCE OF THE EQUIPMENT. SUGGESTED STRAIGHT DUCT SIZE IS 21.5" x 39".

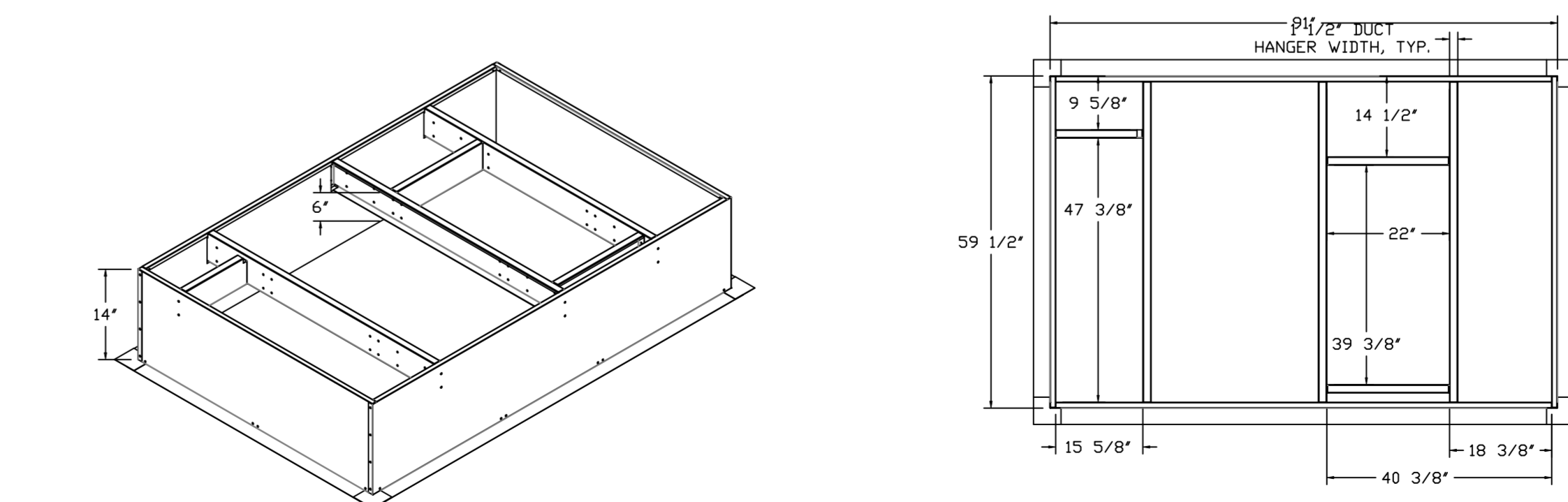
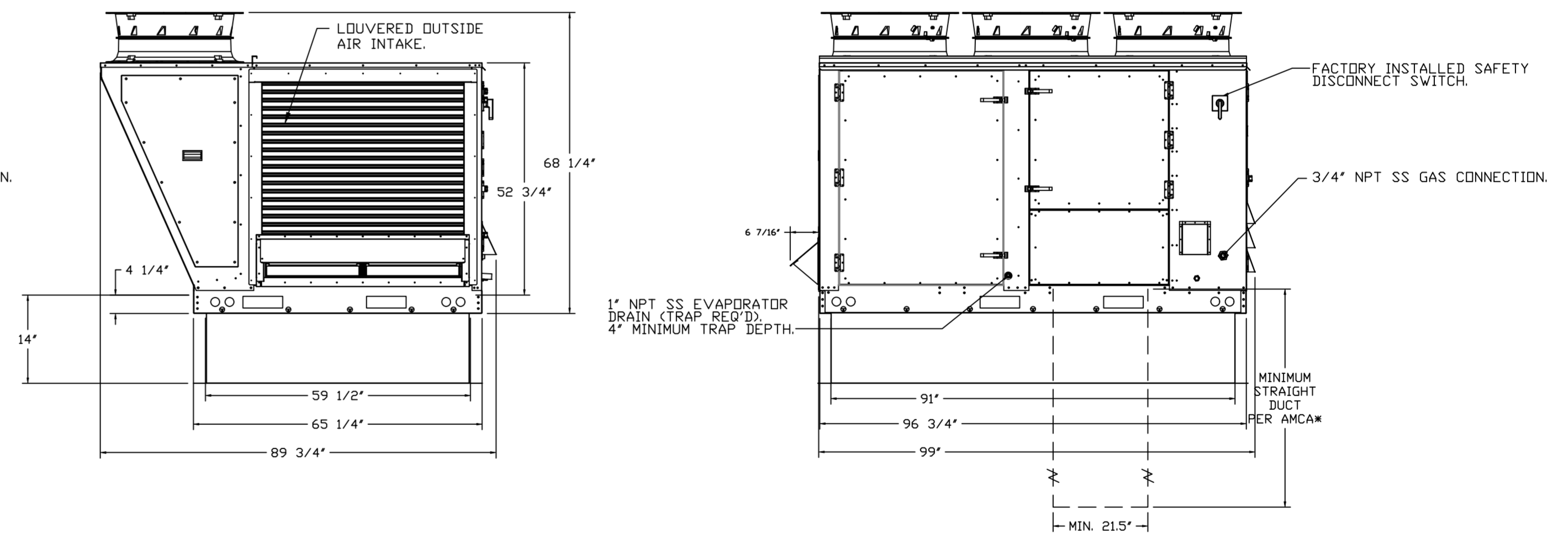
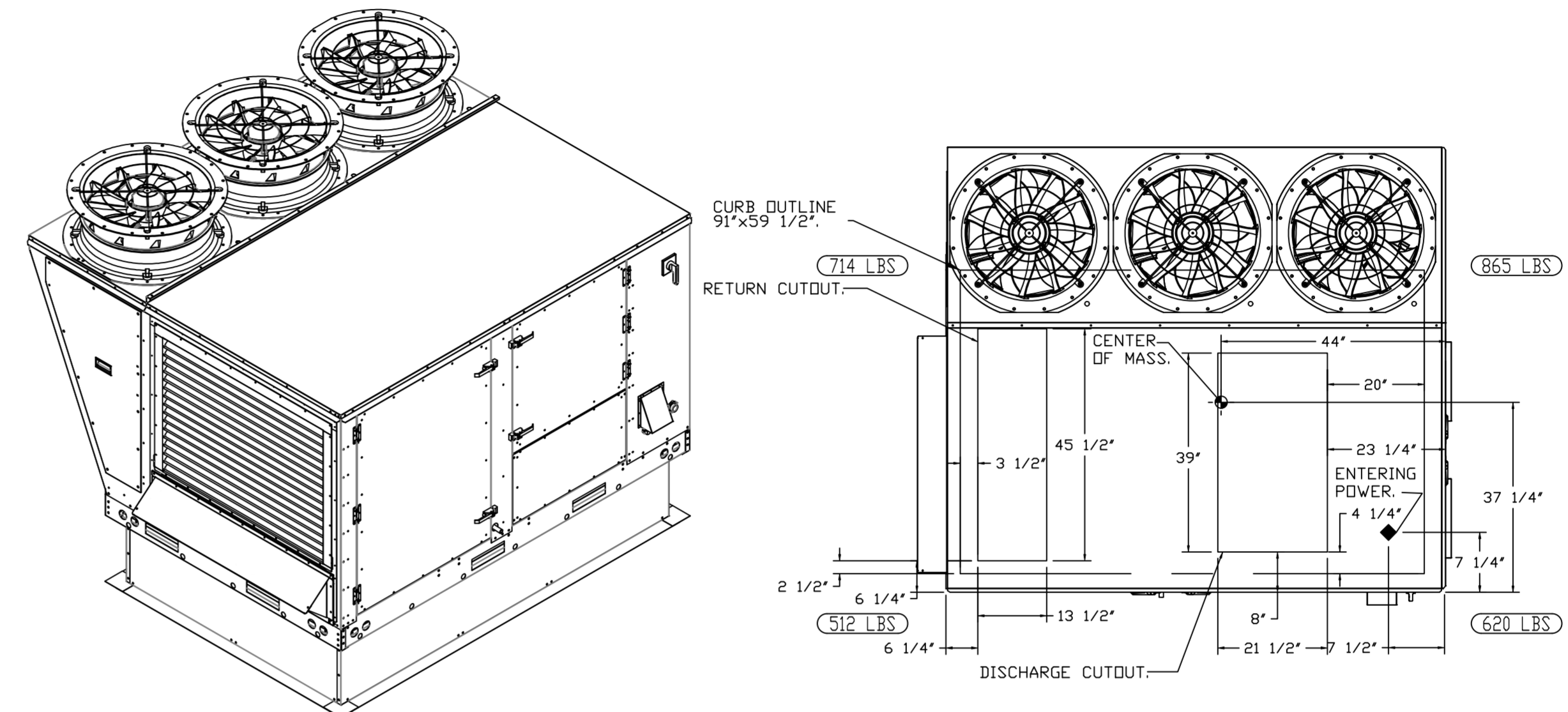


FAN #6 CASRTU3-I.250-24MF-20T - HEATER (RTU-2 KITCHEN)

NOTES:

- DO NOT OBSTRUCT OUTSIDE AIR INLET, OUTSIDE AIR COIL OR OUTSIDE AIR FAN.
-  DENOTES CORNER WEIGHT.
- ROOF OPENING MUST BE 2" SMALLER THAN CURB DIMENSIONS IN BOTH DIRECTIONS.

*NOTE: SUPPLY DUCT MUST BE INSTALLED TO MEET SMACNA STANDARDS. A MINIMUM STRAIGHT DUCT LENGTH MUST BE MAINTAINED DOWNSTREAM OF UNIT DISCHARGE AS OUTLINED IN AMCA PUBLICATION 201. WHEN USING RECTANGULAR DUCTWORK, ELBOWS MUST BE RADIUS THROAT, RADIUS BACK WITH TURNING VANES. FLEXIBLE DUCTWORK AND SQUARE THROAT/SQUARE BACK ELBOWS SHOULD NOT BE USED. ANY TRANSITION AND/OR TURNS IN THE DUCTWORK WILL CAUSE SYSTEM EFFECT. SYSTEM EFFECT WILL DRASTICALLY INCREASE STATIC PRESSURE AND REDUCE AIRFLOW. DO NOT RELY ON UNIT TO SUPPORT DUCT IN ANY WAY. FAILURE TO PROPERLY SIZE DUCTWORK MAY CAUSE SYSTEM EFFECTS AND REDUCE PERFORMANCE OF THE EQUIPMENT. SUGGESTED STRAIGHT DUCT SIZE IS 21.5" x 39".



REVISIONS

DESCRIPTION	DATE

CAPTIVE

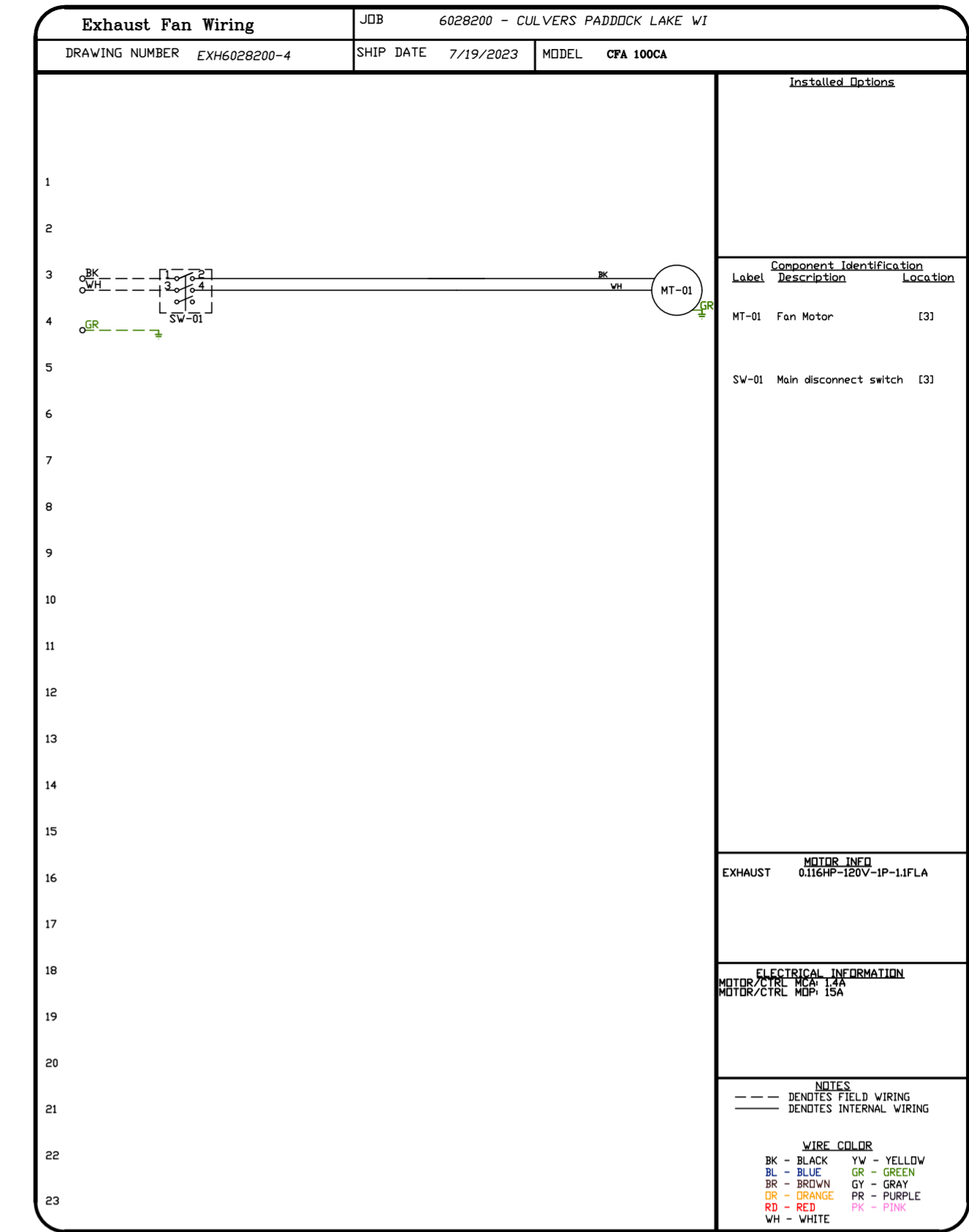
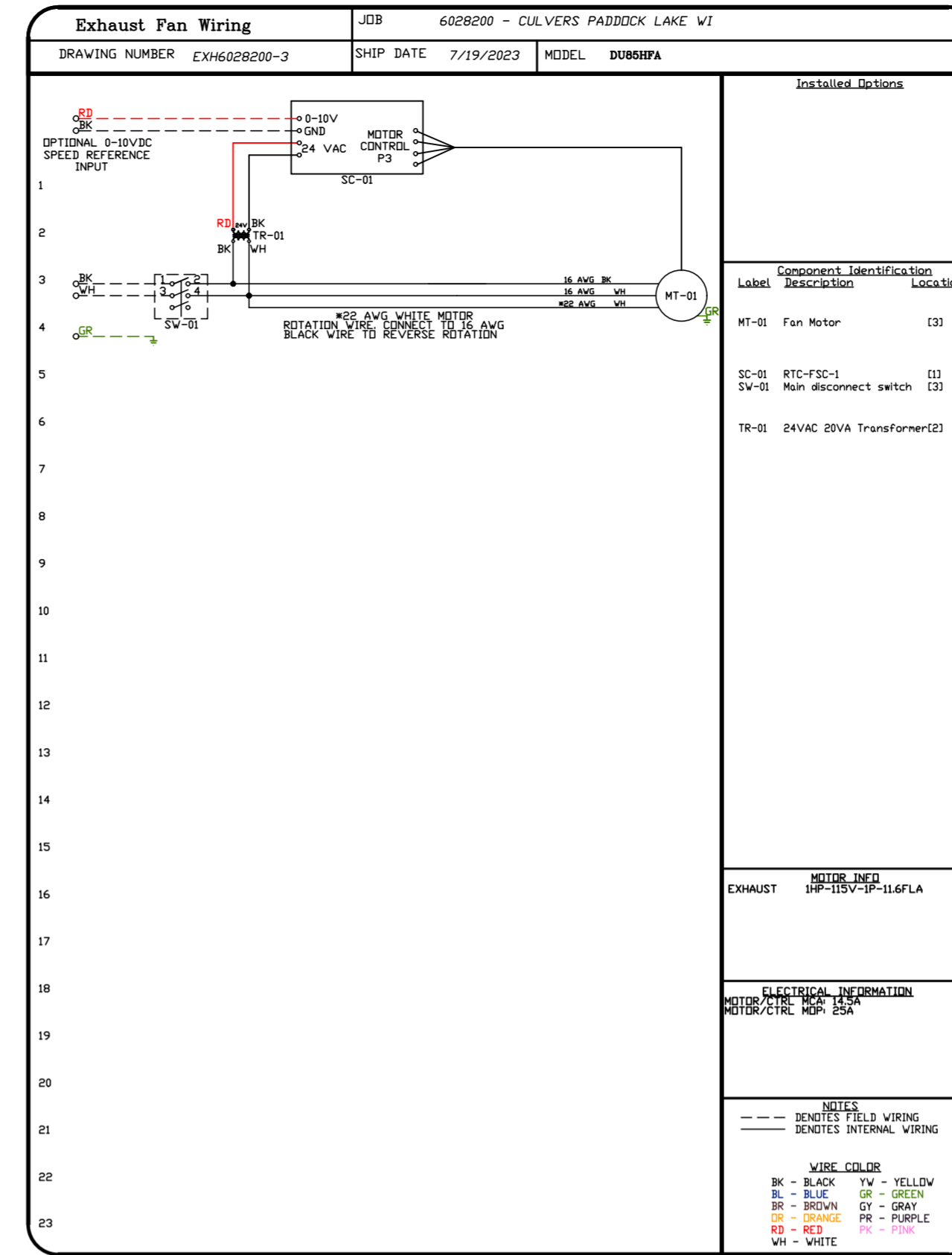
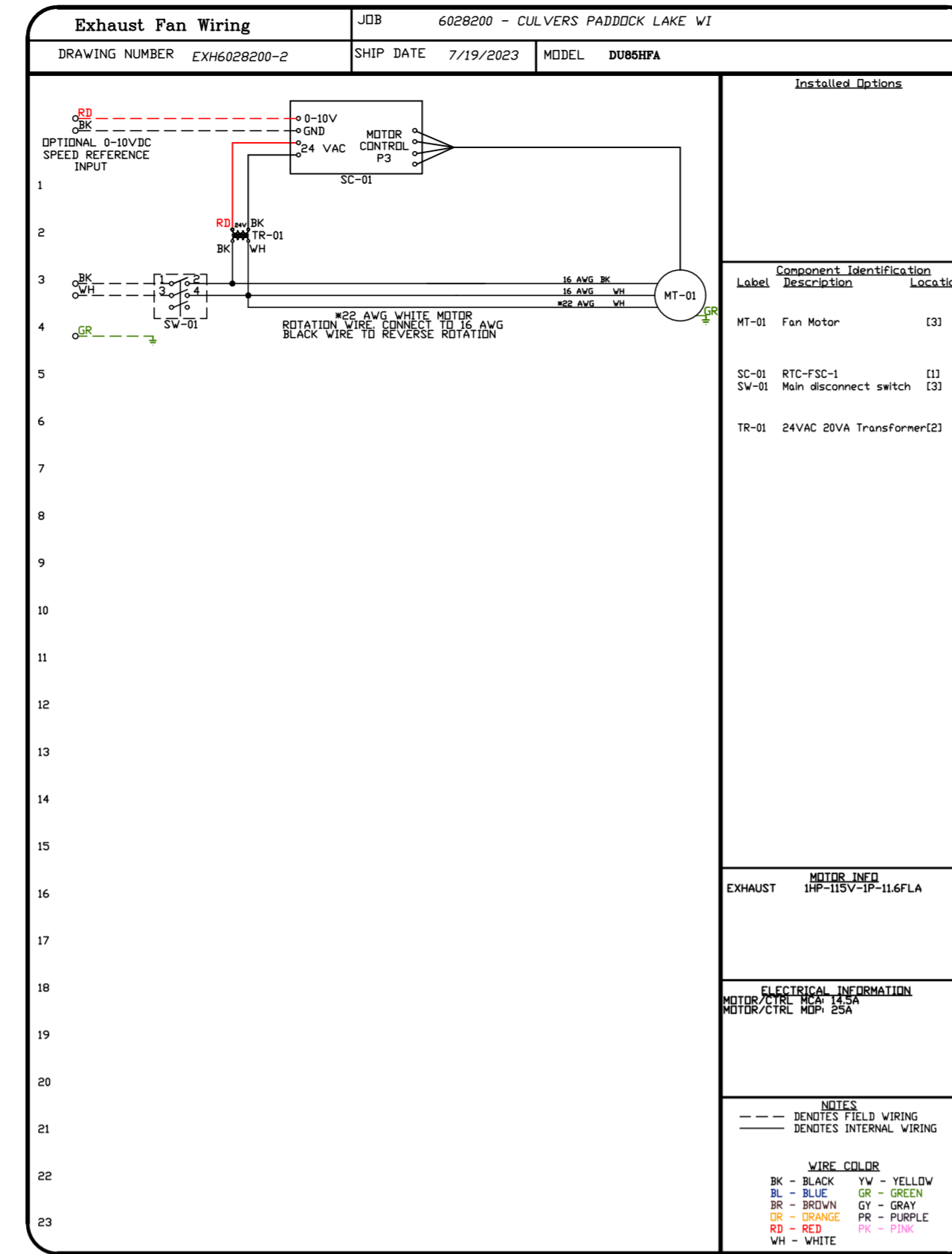
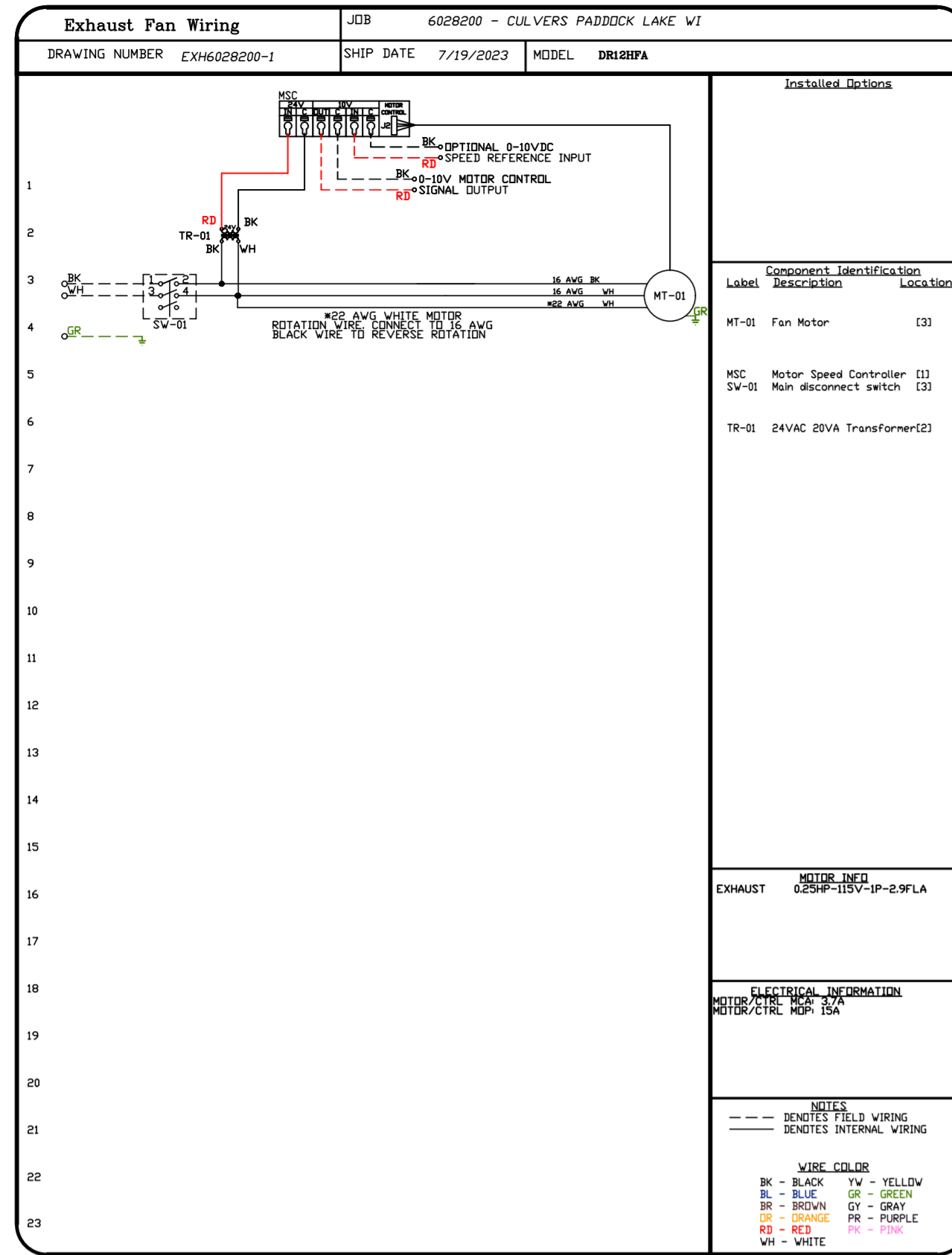
Florida National Accounts

238 N Hunt Club Blvd., STE 201, Longwood, FL 32779 PHONE: (407) 682-3100 FAX: 9192275913 EMAIL: reg60@captivair.com

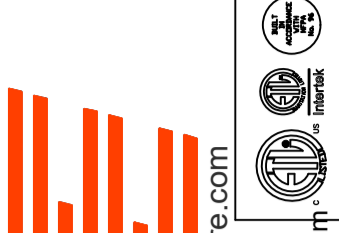
CULVERS PADDOCK LAKE WI
SALEM, WI, 53168

DATE: 7/19/2023
DWG.#: 6028200
DRAWN BY: sluddy jr
SCALE: 1/2" = 1'-0"
MASTER DRAWING

SHEET NO. 6



REVISIONS	
DESCRIPTION	DATE

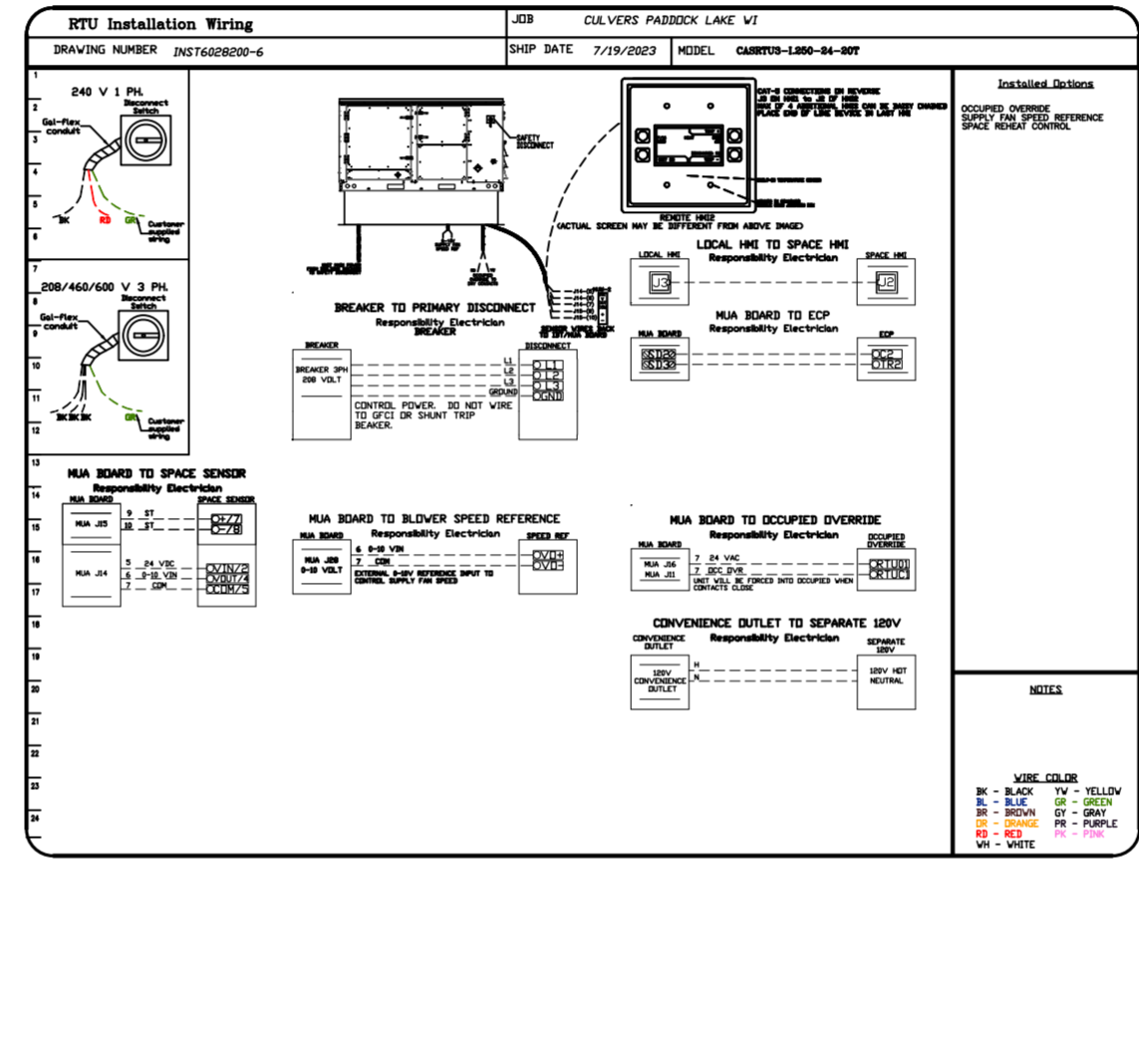
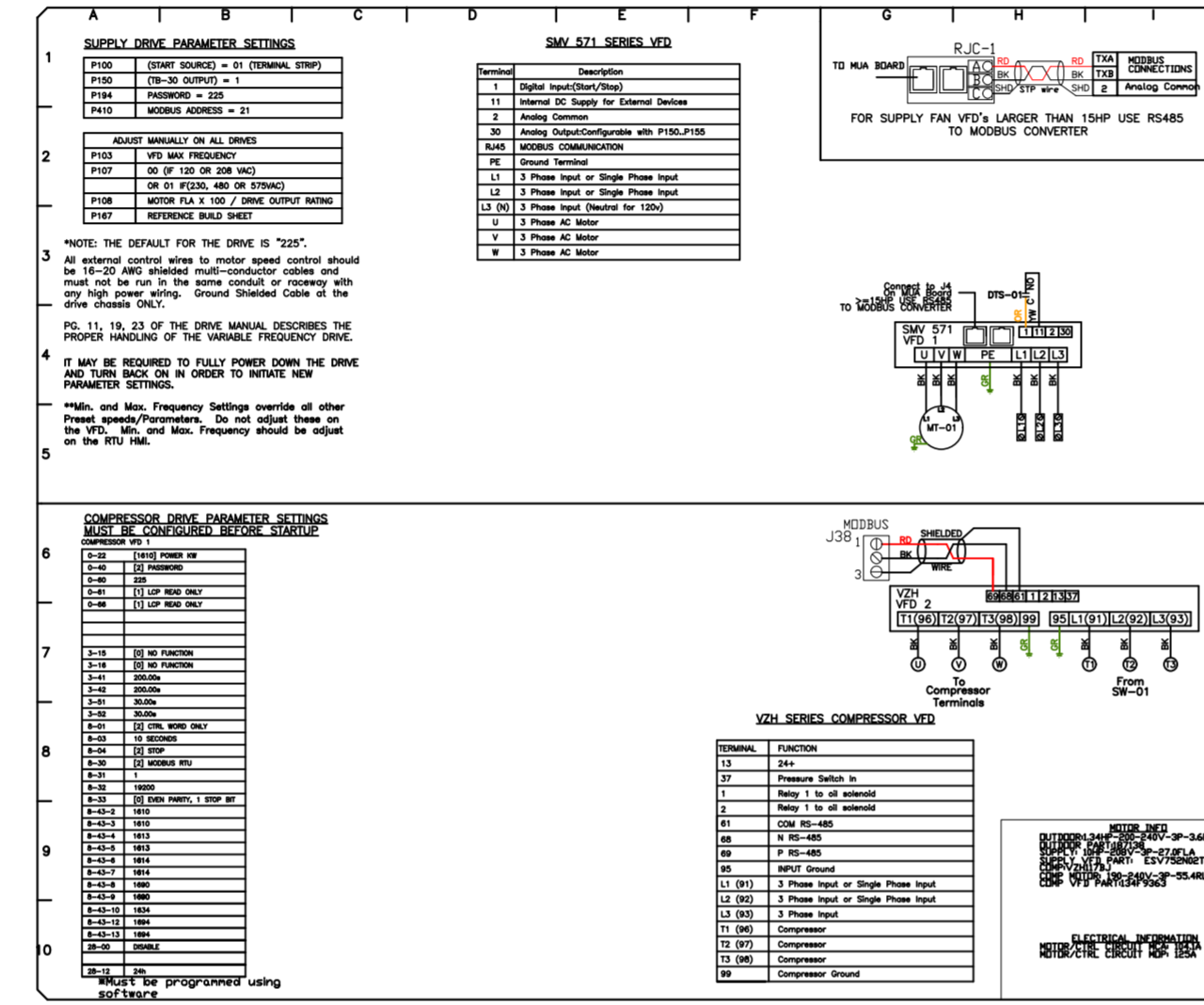
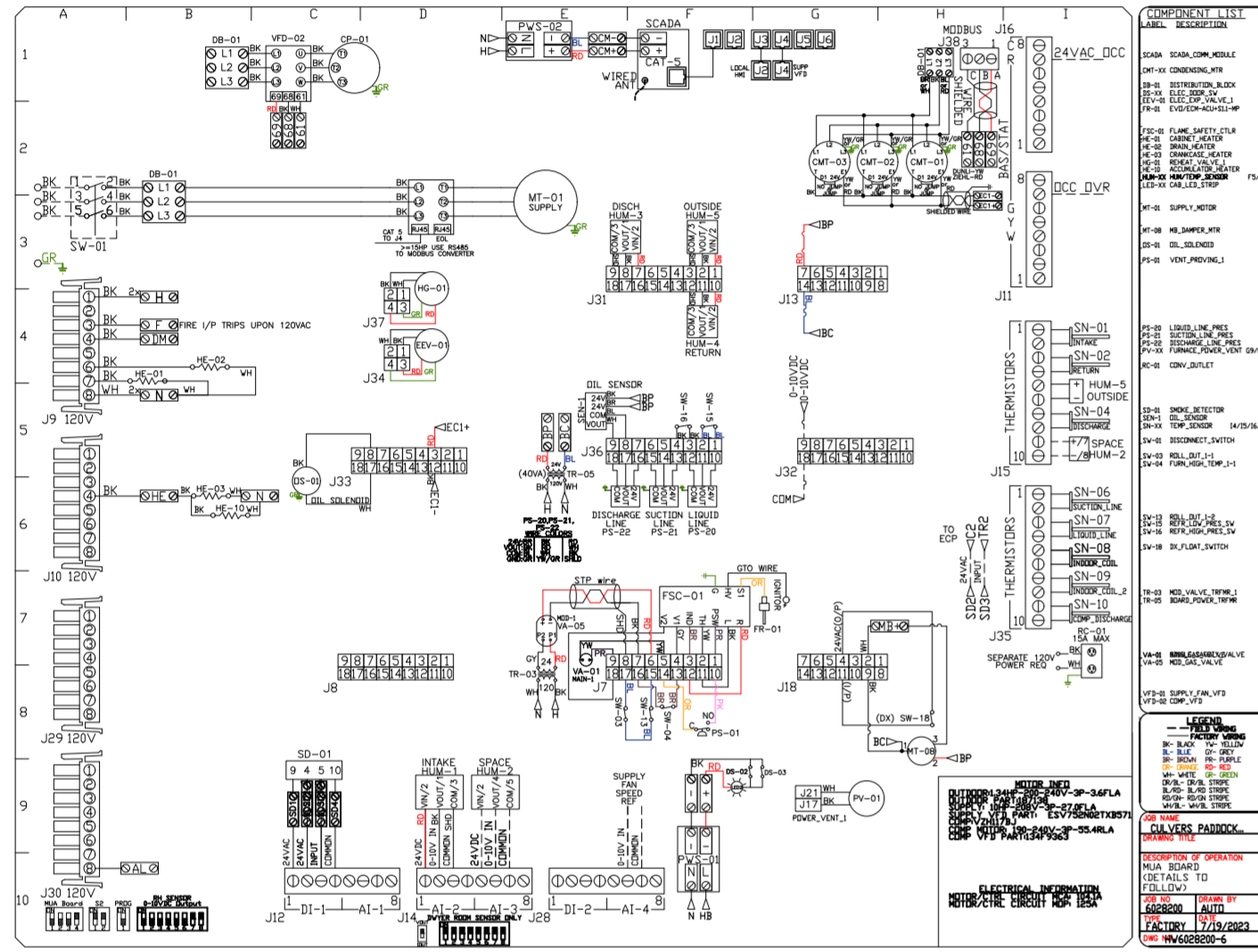
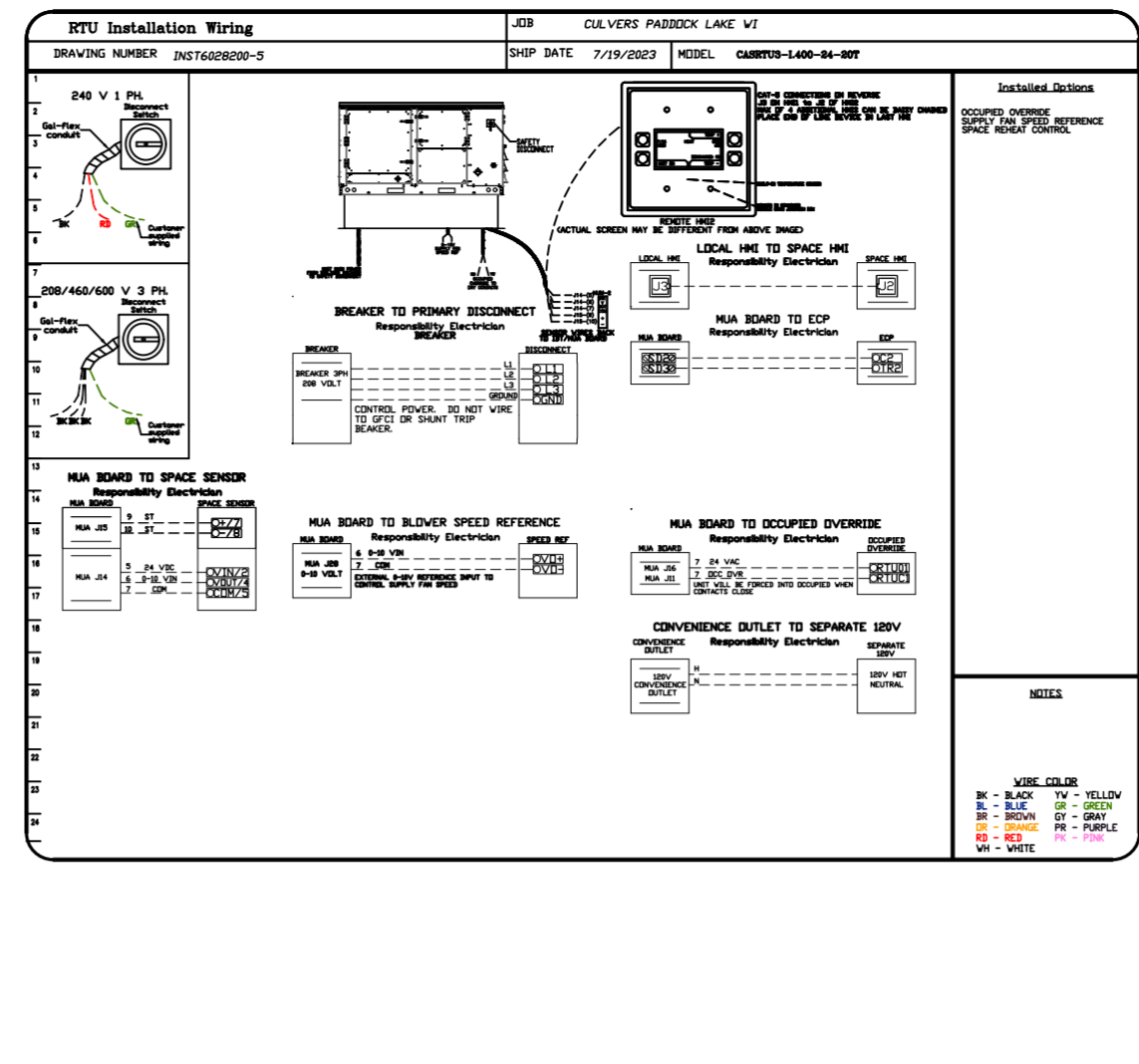
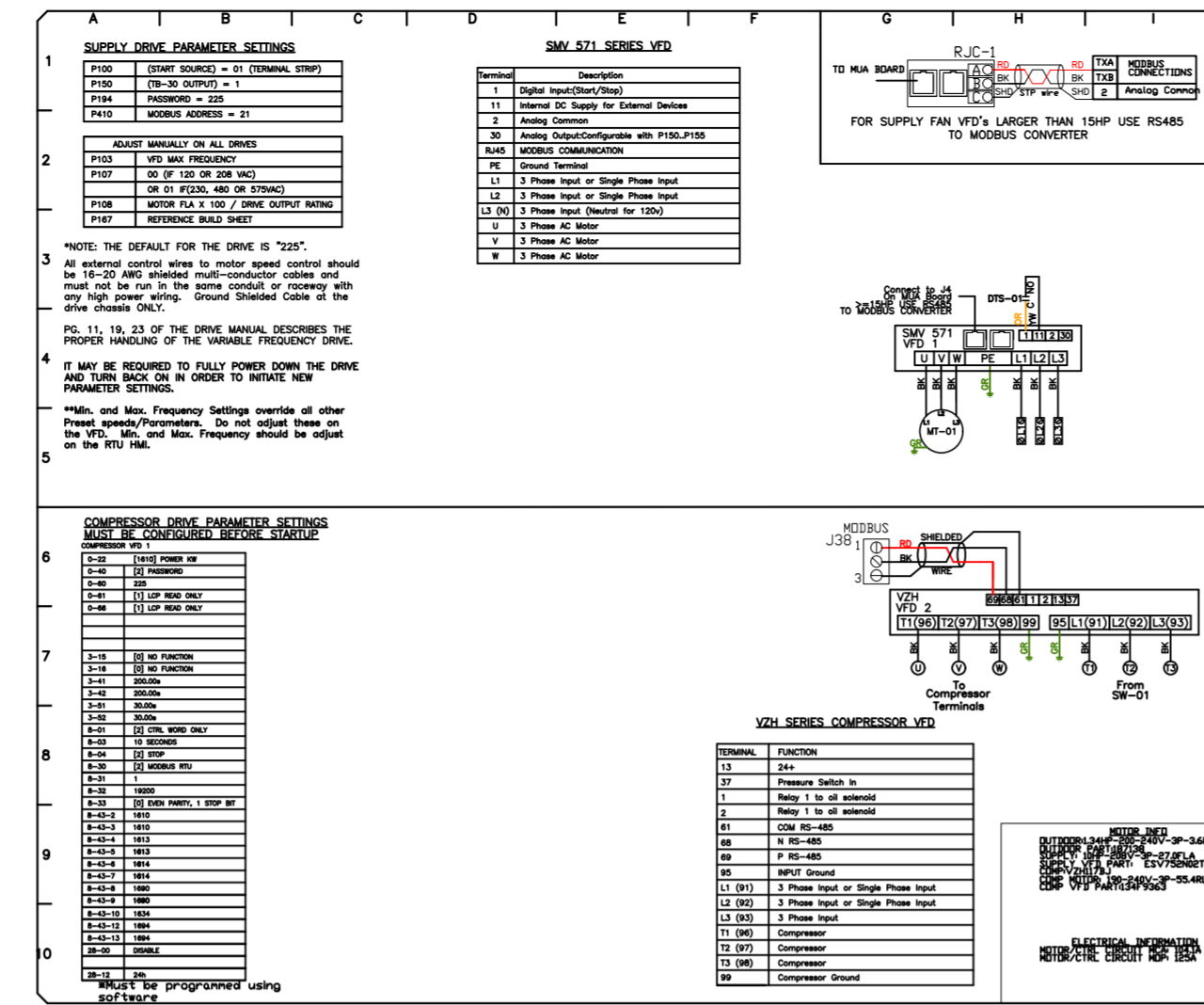
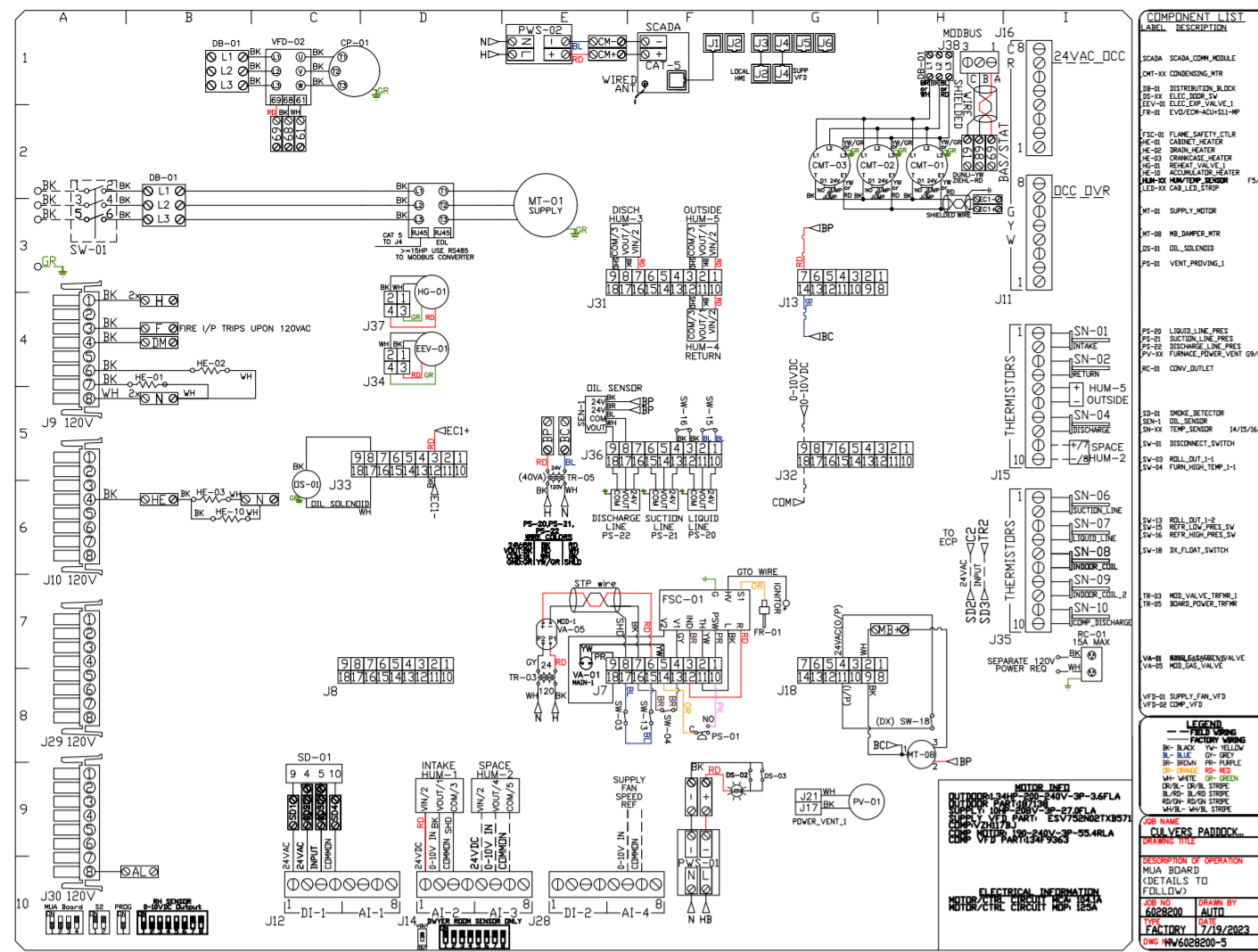


CAPTIVE AIR
 Florida National Accounts
 238 N Hunt Club Blvd., STE 201, Longwood, FL 32779 PHONE: (407) 882-3100 FAX: 9192275913 EMAIL: reg60@captiveair.com
 www.captiveair.com

CULVERS PADDOCK LAKE WI
 SALEM, WI, 53168

DATE: 7/19/2023
DWG.#: 6028200
DRAWN BY: sluddy jr
SCALE: 3/4" = 1'-0"
MASTER DRAWING

SHEET NO.
 7



REVISIONS

NO.	DESCRIPTION	DATE



Florida National Accounts
www.captiveair.com

238 N Hunt Club Blvd., STE 201, Longwood, FL 32779 PHONE: (407) 682-3100 FAX: 9192275913 EMAIL: reg60@captiveair.com

CULVERS PADDOCK LAKE WI
SALEM, WI, 53168

DATE: 7/19/2023

DWG.#: 6028200

DRAWN BY: sluddyjr

SCALE: 1/2" = 1'-0"

MASTER DRAWING

SHEET NO.
8

DUCTWORK #1 PARTS - JOB#6028200 DOUBLE WALL GREASE DUCT

TAG	PART #	CFM	GPM	ZONE	COVEREDBY	SP	WEIGHT	VELOCITY	QTY	DESCRIPTION
P1	DW1247DWLT-2R-S						54.71		1	DOUBLE WALL DUCT - 12" INNER DUCT, 47" LONG - 2 LAYERS REDUCED CLEARANCE - 16" STAINLESS STEEL OUTER SHELL.
P2	DW1247DWLT-2R-S						54.71		1	DOUBLE WALL DUCT - 12" INNER DUCT, 47" LONG - 2 LAYERS REDUCED CLEARANCE - 16" STAINLESS STEEL OUTER SHELL.
P3	DW1235DWLT-2R-S						40.86		1	DOUBLE WALL DUCT - 12" INNER DUCT, 35" LONG - 2 LAYERS REDUCED CLEARANCE - 16" STAINLESS STEEL OUTER SHELL.
P4 ASSEMBLED W/P5	DW1247DWAJDTP-2R-S						82.74		1	DOUBLE WALL ADJUSTABLE DUCT TRANSITION PLATE - 12" INNER DUCT - 2 LAYERS REDUCED CLEARANCE - 16" STAINLESS STEEL OUTER SHELL. MIN LENGTH = 11' / MAX LENGTH = 48.5' / ADJUSTMENT = 30.5' / ADJUSTABLE SECTION MAY NEED TO BE CUT. INCLUDES SINGLE AND DOUBLE WALL 'V' CLAMPS.
P5 ASSEMBLED W/P4	DW2312TPDBEX						8.00		1	DUCT TO CURB TRANSITION 3/4" DOWN TURN, 23" CURB TO 12" DUCT, 16 GA ALUMINIZED. USED ON NCA14FA & NCA14HPFA. TRANSITION PLATE DD IS 23.5" DESIGNED FOR USE WITH EXHAUST FAN. NON-STANDARD PART.
P6	DW1247DWLT-2R-S						54.71		1	DOUBLE WALL DUCT - 12" INNER DUCT, 47" LONG - 2 LAYERS REDUCED CLEARANCE - 16" STAINLESS STEEL OUTER SHELL.
P7	DW1247DWLT-2R-S						54.71		1	DOUBLE WALL DUCT - 12" INNER DUCT, 47" LONG - 2 LAYERS REDUCED CLEARANCE - 16" STAINLESS STEEL OUTER SHELL.
P8	DW1235DWLT-2R-S						40.86		1	DOUBLE WALL DUCT - 12" INNER DUCT, 35" LONG - 2 LAYERS REDUCED CLEARANCE - 16" STAINLESS STEEL OUTER SHELL.
P9 ASSEMBLED W/P10	DW1247DWAJDTP-2R-S						82.74		1	DOUBLE WALL ADJUSTABLE DUCT TRANSITION PLATE - 12" INNER DUCT - 2 LAYERS REDUCED CLEARANCE - 16" STAINLESS STEEL OUTER SHELL. MIN LENGTH = 11' / MAX LENGTH = 48.5' / ADJUSTMENT = 30.5' / ADJUSTABLE SECTION MAY NEED TO BE CUT. INCLUDES SINGLE AND DOUBLE WALL 'V' CLAMPS.
P10 ASSEMBLED W/P9	DW2312TPDBEX						8.00		1	DUCT TO CURB TRANSITION 3/4" DOWN TURN, 23" CURB TO 12" DUCT, 16 GA ALUMINIZED. USED ON NCA14FA & NCA14HPFA. TRANSITION PLATE DD IS 23.5" DESIGNED FOR USE WITH EXHAUST FAN. NON-STANDARD PART.
	3M-2000PLUS						0.80		2	DUCT - 3M FIRE BARRIER 2000 PLUS SILICONE - USED AS SEALANT TO SEAL DUCT JOINTS.
	DW12DWCLASY-2R-S						6.44		6	DUCT - 12" DUCT - 16" DOUBLE 'V' CLAMP - 2R INSULATION & SINGLE 'V' CLAMP INCLUDED - REDUCED CLEARANCE.
TOTAL WEIGHT							522.28			

DOUBLE WALL FACTORY BUILT DUCTWORK

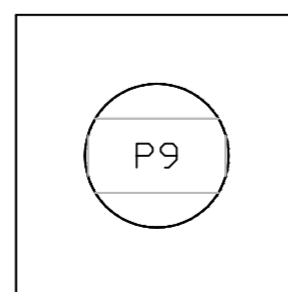
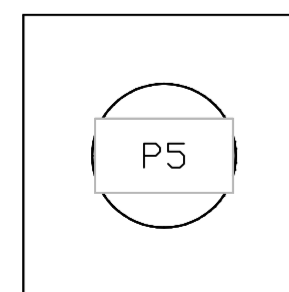
- ALL DUCTWORK IS REQUIRED TO BE INSTALLED WITH THE MAXIMUM SUPPORT SPACING LISTED BELOW.
- FOR A COMPLETE LIST OF APPROVED SUPPORT METHODS, SEE THE ENTIRE INSTALLATION AND OPERATION MANUAL.
- DUCTWORK SHALL SLOPE NOT LESS THAN 1/16" PER LINEAR FOOT TOWARDS THE HOOD OR AN APPROVED GREASE COLLECTION RESERVOIR.
- WHERE HORIZONTAL DUCTS EXCEED 75 FEET IN LENGTH, THE SLOPE SHALL NOT BE LESS THAN 3/16" PER LINEAR FOOT.

HORIZONTAL	
DUCT DIAMETER	SUPPORT SPACING (FT)
5'	7'
6'	7'
7'	7'
8'	7'
10'	7'
12'	7'
14'	7'
16'	7'
18'	5'
20'	5'
22'	5'
24'	5'
26'	5'
28'	5'
30'	5'
32'	5'
34'	5'
36'	5'

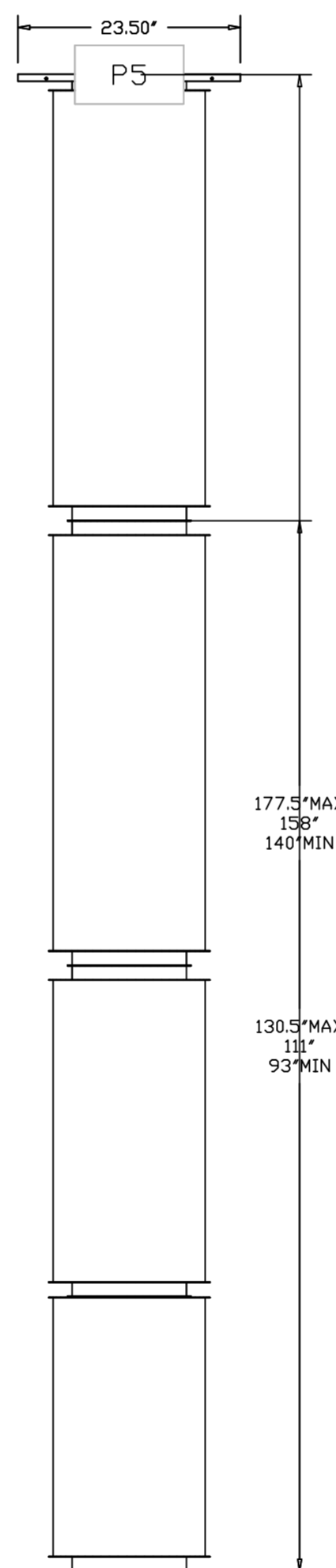
VERTICAL			
TYPE	WALL SUPPDRT (FT)	CURB SUPPDRT (FT)	FLOOR SUPPDRT (FT)
2R & 2R HT (5'-16')	20'	24'	24'
2R (18')	18'	24'	24'
3R & 3Z (5'-24')	10'	24'	24'
3Z (26' -36')	10'	20'	20'

DO NOT LEAK TEST USING SMOKE BOMBS CONTAINING CHLORINES/CHLORIDES. CONSULT WITH CAPTIVEAIRE FOR PROPER LEAK TESTING METHODS.

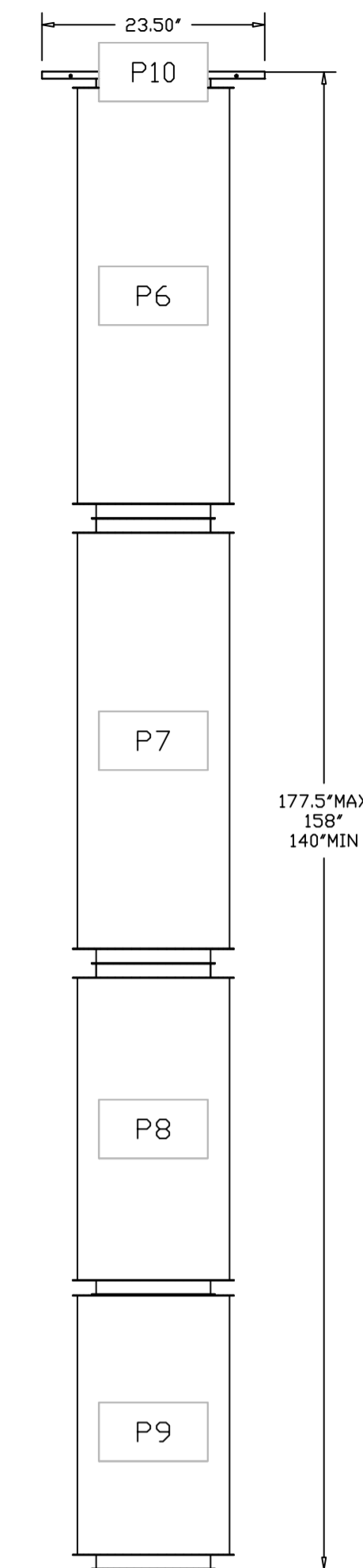
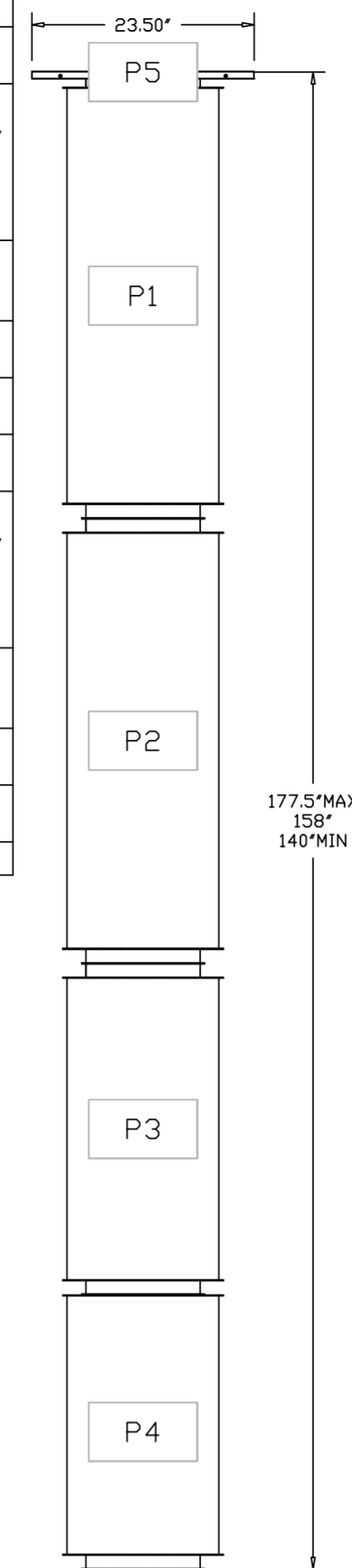
DUCTWORK #1 TOP VIEW GREASE DUCT



DUCTWORK #1 SIDE VIEW GREASE DUCT



DUCTWORK #1 FRONT VIEW GREASE DUCT



REVISIONS	
DESCRIPTION	DATE

CAPTIVEAIRE

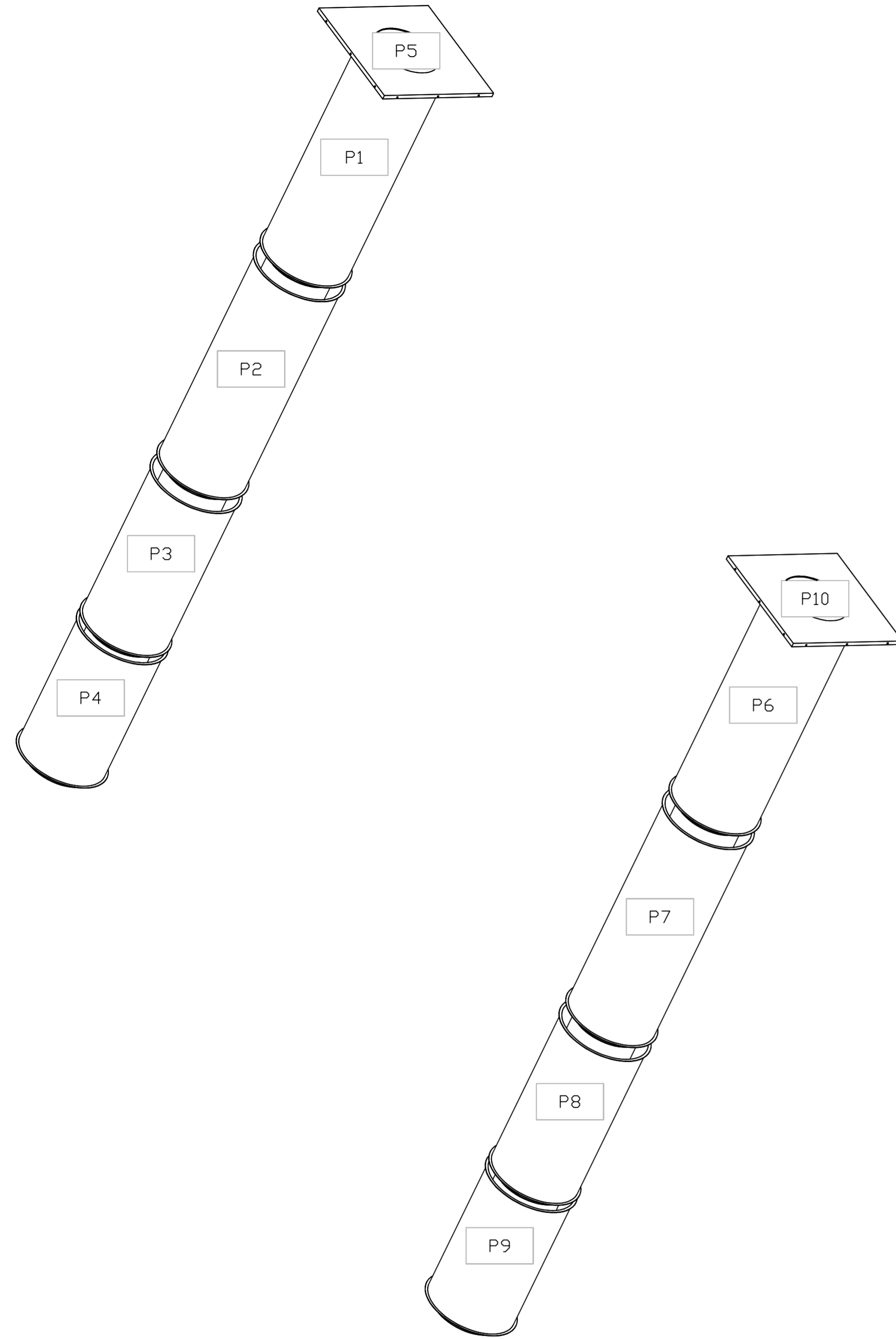
Florida National Accounts
www.captiveaire.com
238 N Hunt Club Blvd., STE 201, Longwood, FL 32779 PHONE: (407) 882-3100 FAX: 9192275913 EMAIL: reg80@captiveaire.com

CULVERS PADDOCK LAKE WI
SALEM, WI, 53168

DATE: 7/19/2023
DWG.#: 6028200
DRAWN BY: sluddy jr
SCALE: 3/4" = 1'-0"
MASTER DRAWING

SHEET NO.
10

DUCTWORK #1 SE VIEW
GREASE DUCT



REVISIONS

DESCRIPTION	DATE



Florida National Accounts
www.captiveair.com
238 N Hunt Club Blvd., STE 201, Longwood, FL 32779 PHONE: (407) 882-3100 FAX: 9192275913 EMAIL: reg60@captiveair.com

CULVERS PADDOCK LAKE WI
SALEM, WI, 53168

DATE: 7/19/2023
DWG.#: 6028200
DRAWN BY: sluddy jr
SCALE: 3/4" = 1'-0"
MASTER DRAWING

SHEET NO.
11