

Packaged HP Unit Schedule - All units are existing to remain																
Unit Tag	Serving	Manufacturer	Condition	Model	Nom. Tons	Cooling			Heating		Dry Bulb Economizer	Filter Efficiency	Unit Volts/Ph	Unit MCA	Unit MSCP	Unit Weight
						Total Capacity Net (MWh)	Supply Airflow (CFM)	Efficiency EER	Req'd O.A. (CFM)	Output (MWh)						
1	Exam/Dental	Carrier	Existing	50VT-C36-50	3	36.0	1200	Existing	105	34.8	Yes	MERV-13	208/3	23.6	30	465
2	Receipt/Tri/mt	Carrier	Existing	50TCDD08A2ASAAQ0GD	7.5	88.0	3000	Existing	295	48.0	Yes	MERV-13	208/3	40.0	50	1105
3	Exam/Offices	Carrier	Existing	50VT-C48-50	4	46.0	1200	Existing	220	45.5	Yes	MERV-13	208/3	29.0	40	540

General Notes:
1. Cooling capacities based on 83°F ambient and 76/64°F E.A.T. and 30° elevation

Standard Features:
Meets ASHRAE standard 90.1
High and Low pressure refrigerant controls
R-410A refrigerant

Exhaust Fan Schedule							
Unit Tag	Manufacturer	Model	Description	Volts/Ph	Exhaust cfm	Weight lbs	ESP inwc
1	Greenheck	G-090-VG	Roof Mounted Exhaust Fan	115/1	450	30	0.30
2	Greenheck	G-070-VG	Roof Mounted Exhaust Fan	115/1	275	20	0.30

Additional Information:
Direct Drive
Aluminum housing
Centrifugal backward inclined aluminum wheel
Vibration isolation

Controlled by timeclock

MECHANICAL LEGEND	
	REMOTE TEMPERATURE SENSOR @ 48" A.F.F. U.N.O.
	THERMOSTAT ASSOCIATED WITH REMOTE TEMP. SENSOR
	DUCT SMOKE DETECTOR
	CARBON DIOXIDE SENSOR @ 60" A.F.F. U.N.O.
	SUPPLY AIR GRILLE
	RETURN / EXHAUST AIR GRILLE
	FLEXIBLE DUCT
	VOLUME DAMPER AT EACH SUPPLY DIFFUSER

HVAC EXISTING SYSTEM NOTES	
T.G.C. SHALL PROVIDE THE FOLLOWING (BUT NOT LIMITED TO):	
1.	THE COMPLETE LUBRICATION OF ALL SHAFTS AND BEARINGS THAT HAVE LUBRICATION ZERKS.
2.	THE REPLACEMENT OF ALL BELTS, HOSES AND FABRIC/RUBBER COATED ITEMS THAT ARE SUBJECT TO WEAR.
3.	THOROUGH CLEANING OF COILS. THE STRAIGHTENING (COMBING) OF ALL LOUVERS & FINS.
4.	EXAMINE AND REPAIR ALL ELECTRICAL WIRING, CONTROLS, STARTERS, RELAYS, CAPACITORS AND LIKE ITEMS THAT TEND TO DETERIORATE OVER TIME OR BECOME NONOPERATIONAL. THIS INCLUDES SMOKE DETECTORS.
5.	THE REPLACEMENT OF "LIFETIME" BUSHINGS AND BEARINGS THAT ARE SEALED AND CANNOT BE LUBRICATED BUT ARE IN FACT WORN BEYOND REASONABLE USE.
6.	CHECK/REPAIR CONDENSATE DRAIN LINE AND PAN.

DIFFUSER, GRILLE, AND REGISTER SCHEDULE

CALLOUT	DESCRIPTION	MODEL	QUANTITY
CD-1	Krueger Louvered Face	Krueger/1400	19
CD-2	Krueger Louvered Face	Krueger/1400	9
ER-2	Krueger Perforated Face	Perforated Face	6
RG-1	Krueger Double Deflection Return	Krueger/S80	5

EXISTING DIFFUSER NOTE

MANY DIFFUSERS LIKELY AVAILABLE FROM DEMOLITION PHASE. M.C. TO RE-USE EXISTING DIFFUSERS WHERE POSSIBLE.

NOTES

- INSTALLATION MUST CONFORM TO FEDERAL, STATE AND LOCAL CODES AND AUTHORITIES HAVING JURISDICTION.
- M.C. SHALL FURNISH AND PROVIDE A FULLY FUNCTIONAL HVAC SYSTEM PER THESE PLANS. THE HVAC SYSTEM SHALL INCLUDE PACKAGED ROOF TOP EQUIPMENT, CONTROLS, DUCTED AIR DISTRIBUTION, ALL PIPING, AND POWER TO UNITS.
- EXHAUST AIR SYSTEMS INCLUDING EXHAUST FANS ON ROOF PROVIDED BY M.C.
- M.C. TO MAKE DUCT CONNECTIONS TO ROOF TOP EQUIPMENT. COORDINATE LOCATIONS WITH OWNER.
- MOUNT DUCTWORK AS HIGH AS POSSIBLE.
- TRANSITION DUCTWORK CONNECTIONS TO EQUIPMENT AS REQUIRED.
- TEST AND BALANCE AIR SYSTEMS. PROVIDE REPORT TO C.C. AND OWNER.
- INSULATE SUPPLY AIR DUCTWORK IN ALL CONCEALED SPACES.
- COORDINATE ROUTING OF DUCTWORK AND DIFFUSER LOCATIONS WITH EXISTING CONDITIONS. VERIFY PRIOR TO FABRICATION AND INSTALLATION.
- NOT USED.
- PROVIDE DUCT MOUNTED SMOKE DETECTORS ON ALL UNITS PER CODE (IF NOT EXISTING).
- CONDENSATE TO BE ROUTED TO APPROVED RECEPTOR. EXPECTED TO RE-USE EXISTING CONDENSATE PIPING.
- ALL EXPOSED ROUND DUCTWORK SHALL BE INTERNALLY LINED. ALL DUCTWORK DIMENSIONS ARE INSIDE CLEAR.
- IF APPLICABLE, EGG CRATE TO BE PROVIDED AND INSTALLED BY C.C.
- ALL LIGHTING, DUCTWORK, SOFFITS AND CEILING COMPONENT HEIGHTS ARE TO BE COORDINATED WITH THE ARCHITECT.
- HVAC UNIT LOCATIONS AND DUCT DROP LOCATIONS ARE DIAGRAMMATIC. IT IS EXPECTED THAT THE CONTRACTOR WILL MAKE SLIGHT ADJUSTMENTS IN THE FIELD TO ACCOUNT FOR THINGS SUCH AS JOIST LOCATIONS, SPRINKLER MAINS, ACTUAL SUPPLY AND RETURN DUCT LOCATIONS, ETC. AS NEEDED.
- THE MEP PLANS ARE NOT STRUCTURAL ENGINEERING PLANS. STRUCTURAL ENGINEERING, WHERE REQUIRED BY OTHERS.
- FINAL PLACEMENT OF T-STATS AND SENSORS SHALL BE DETERMINED BY THE OWNER'S REP., AS RECOMMENDED BY HVAC CONTRACTOR. WIFI T-STATS TO BE EITHER VISION PRO 8000 WITH REDLINK OR HONEYWELL 6000.
- DUCTWORK IN CONCEALED AREAS MAY BE RECTANGULAR WITH EQUIVALENT CROSS SECTIONAL FLOW AREA.
- ALL DUCT SYSTEMS SHALL BE INSTALLED PER CMC 602, 603, 604 AND SMACNA HVAC DUCT CONSTRUCTIONS STANDARDS.
- ROOFTOP EQUIPMENT SHALL BE PERMANENTLY IDENTIFIED AS TO THE AREA OR SPACE SERVED BY THE EQUIPMENT PER CMC 303.6.

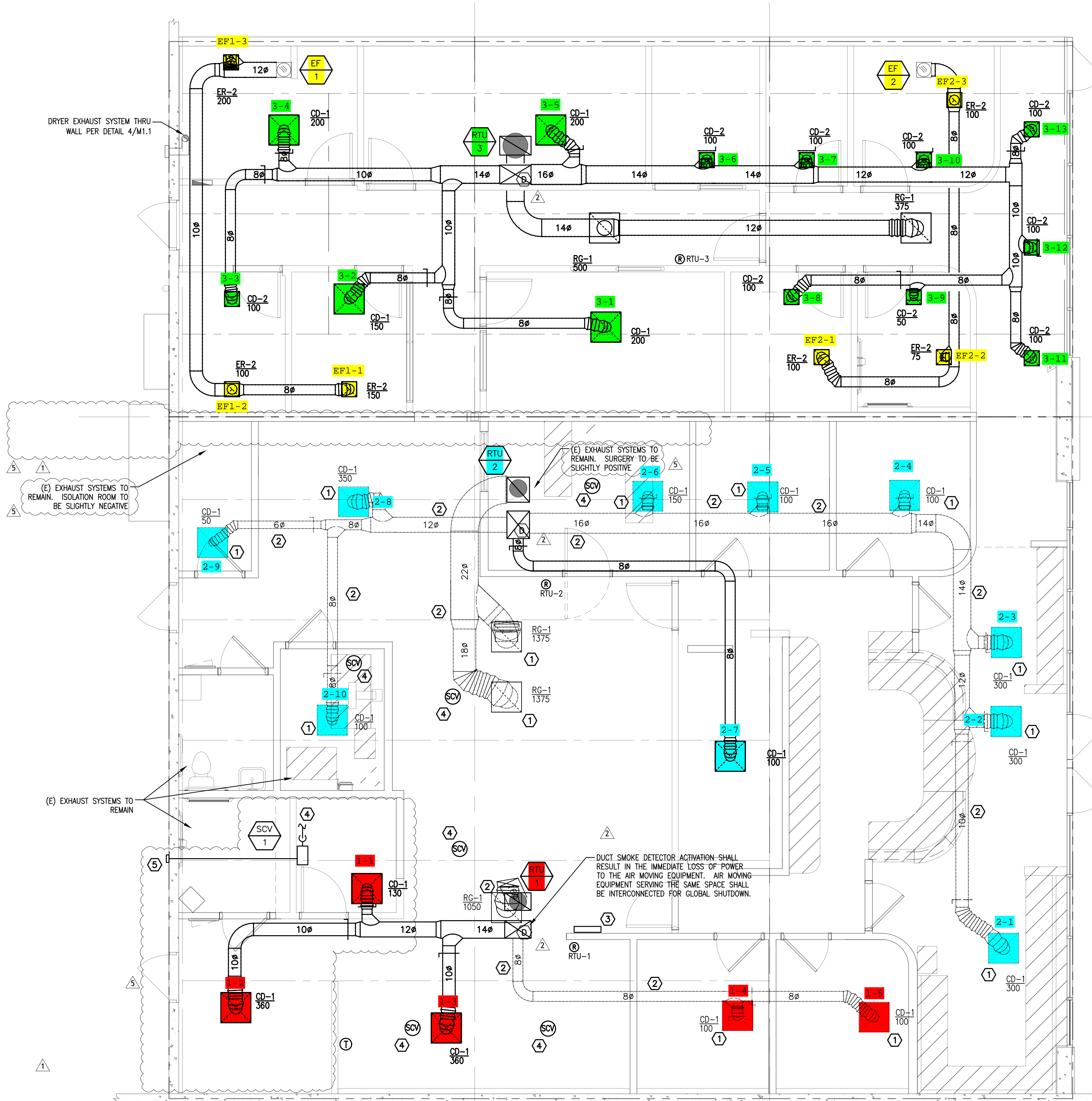
DUCT SCHEDULE	
AIR FLOW (CFM)	ROUND NECK SIZE (U.N.O.)
0 - 100	6"
101 - 200	8"
201 - 300	10"
301 - 500	12"
501 - 800	14"

NOTES:
1. NECK SIZES SHALL BE SIZED AS PER FLEX DUCT SCHEDULE, EXCEPT RETURN GRILLES, WHICH HAVE NOMINAL SIZE NECK.

KEYED NOTES	
1	(E) DIFFUSER AT THIS LOCATION TO BE RE-USED.
2	(E) DUCTWORK SHOWN IN LIGHT LINE-TYPE. M.C. TO FIELD VERIFY THE QUANTITY AND CONDITION OF (E) DUCTWORK PRIOR TO BID.
3	KEYED REMOTE TEST SWITCHES WITH LED LIGHT INDICATORS ARE TO BE PROVIDED ON THE WALL AT NO GREATER THEN 6' A.F.F. FOR ALL SMOKE DETECTORS.
4	ROUTE WASTE GAS SCAVENGER SYSTEM PIPING ABOVE CEILING TO DROP LOCATIONS SHOWN. PIPING TYPICALLY 2" PVC PER MANUFACTURER'S INSTALLATION INSTRUCTIONS.
5	ROUTE SCAVENGER EXHAUST THRU WALL TO EXTERIOR.

WASTE GAS SCAVENGER SYSTEM SCHEDULE						
UNIT TAG	MANUFACTURER	MODEL	DESCRIPTION	VOLTS/PH	FLA (AMPS)	WEIGHT LBS.
1	SUPERA	EVC3000	ACTIVE EVACUATION SYSTEM	115/1	0.3	10

ADDITIONAL INFORMATION:
CONTROLLED BY LIGHTED WALL SWITCH
OUTLETS TO BE EVACUATED WHERE SHOWN
WASTE GAS INTERFACE TO BE PROVIDED AT EACH ANESTHESIA MACHINE



1 MECHANICAL PLAN
1/4" = 1'-0"

14 MAR 2023

TELEGRAPH CANYON ANIMAL
MEDICAL CENTER
577 TELEGRAPH CANYON ROAD
CHULA VISTA, CA 91910

NVA
National Veterinary Associates
CONSTRUCTION SET ISSUE
06/17/22

STORE NUMBER
423

CLIENT REVIEW SET: 10/22/21
FINAL SET ISSUE: 11/15/21
PERMIT SET ISSUE: 12/07/21
JOB NO: 28-2011
DRAWN: RFV
CHECKED: RFV

REVISIONS		
No.	DATE	DESCRIPTION
1	12/07/21	ADD SCAVENGER
2	02/14/22	FD COMMENTS
3	03/08/22	BD COMMENTS
4	06/14/22	CLARIFICATIONS
5	03/14/23	CL COMMENTS

SHEET TITLE
MECHANICAL PLAN

SHEET NUMBER
M1.0