



**02-24-25 SHAKE SHACK #1520 CINCINNATI, OH (CLIFTON)
TAB, IAQ, CX**

CheckList Information

Name : Condenser Water Source FOP Test **Status :** Not Completed
Assigned Organization : National TAB **Asset :**
Requesting Organization : National TAB
Created Date : 02/25/2025 - Dan Hertenstein - National TAB

CheckList Item Details

Control Identification

Controller Type (local, BAS, other)

Comment:

Controller MFG and Model

Comment:

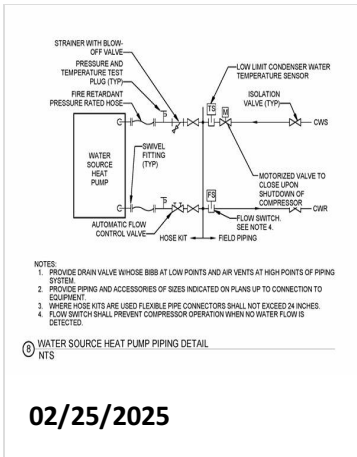
Controller is fully programmed for occupied/unoccupied and proper SOO

Comment:

Water coil FIV Inspection

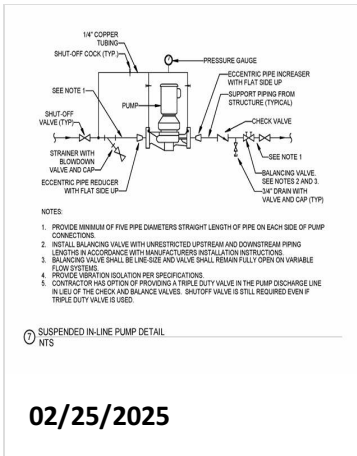
Review Attached Detail of WS coil piping configuration and accessories. Identify if there are any deviation from these details

Comment:



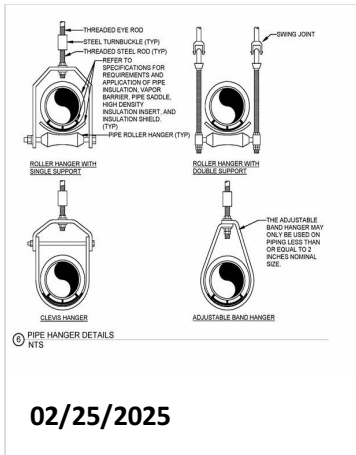
Review Attached Detail of Condensate Pump(s) configuration and accessories. Identify if there are any deviation from these details

Comment:



Water Source Pipe - Supports: Review Attached Detail of pipe hangers. Identify if there are any deviation from these details

Comment:



02/25/2025

Provide hose kit for connection between field piping and heat pump water coil. Hose kit components shall be same size as piping serving the unit as shown on the drawings. Hose kit shall include ball shut-off valves, inlet strainer, outlet automatic flow control valve, fire retardant pressure rated flexible hoses, swivel fittings, and pressure and temperature test plug on both inlet and outlet.

Suspend horizontal units from structure using all-thread steel rods and spring vibration isolators with 2 inches minimum deflection. Support vertical units with neoprene vibration isolation pads and 3-1/2 inch thick concrete base.

Provide an auxiliary drain pan for suspended units with flood detector switch to shut off unit when water is detected in auxiliary drain pan. Flood detector switch shall be Duresbach wet switch or equivalent. Detector shall shut system down when water comes in contact with the hydrophilic pad of the detector. Place detector in the lowest location in the auxiliary drain pan. Connect switch to BAS system. BAS system shall alarm when detector shuts down the system.

02/25/2025

Water Source Pipe - Supports: Supports are positioned at least every 6ft on center for pipe 1.5" and less, and 10ft on Center for pipe 2" and larger, and a support within 1 foot of every 90 degree turn (on both sides)

Comment:

TCV Operation

WHSP-1: Condenser water TCV is open during call for Heating or Cooling and is closed when fan is in auto.

Comment:

WHSP-2: Condenser water TCV is open during call for Heating or Cooling and is closed when fan is in auto.

Comment:

WHSP-3: Condenser water TCV is open during call for Heating or Cooling and is closed when fan is in auto.

Comment:

WHSP-4: Condenser water TCV is open during call for Heating or Cooling and is closed when fan is in auto.

Comment:

Walk-In Condenser Coil 1: Condenser water TCV is open during call cooling and is closed when call is idle

Comment:

Walk-In Condenser Coil 2: Condenser water TCV is open during call cooling and is closed when call is idle

Comment:

Heat Transfer (Energize all WSHP's and Condensers coils for minimum 5 minutes before testing)

With all Heat pumps and condensers "on" record: WSHP-1 water EAT (supply line) and Water LAT (Return Line)

Comment:

With all Heat pumps and condensers "on" record: WSHP-2 water EAT (supply line) and Water LAT (Return Line)

Comment:

With all Heat pumps and condensers "on" record: WSHP-3 water EAT (supply line) and Water LAT (Return Line)

Comment:

With all Heat pumps and condensers "on" record: WSHP-4 water EAT (supply line) and Water LAT (Return Line)

Comment:

With all Heat pumps and condensers "on" record: Walk-In Freezer Coil-1 water EAT (supply line) and Water LAT (Return Line)

Comment:

With all Heat pumps and condensers "on" record: Walk-In Freezer Coil-2 EAT (supply line) and Water LAT (Return Line)

Comment:

Pump Lead/Lag Control & Programming

Record the control Interface scheduled runtime for Pump 1 (Lead pump)

Comment:

Record the control Interface scheduled runtime for Pump 2 (Lag pump)

Comment:

Test control to switch pump operation from P1 to P2, then back to P1. Does Control properly manage sequencing between each pump based on auto schedule.

Comment:

--