

MECHANICAL EQUIPMENT SCHEDULE

MARK	AREA SERVED	HEATING		COOLING				WATER		FRESH AIR DATA				MANUFACTURER			GENERAL		ELECTRICAL			CONTROLS AND REMARKS	NOTE			
		cap	kW	load	cap	evt	lvt	nm. lbs	gpm	ft. head	cfm	e.s.p.	hp	people	min.cfm	act.cfm	name	model no.	options	weight	m.c.o.			volts	phase	m.o.c.p.
FC-1	KITCHEN	MBH 34	10.0	78	124	44	55	7.5	21.9	9.4	3000	1.0	3.0	10	900	3000	CARRIER	42DHA30	TWO-STAGE ELECTRIC HEAT	374 LBS.	21.0	460	3PH	25A	PROGRAMMABLE THERMOSTAT W/ REMOTE TEMPERATURE AND HUMIDITY SENSOR.	A,B,C
FC-2	DISPLAY KITCHEN	-	-	56	96	44	56	7.5	15.5	5.5	2250	1.0	1.0	7	675	2250	CARRIER	42DHA30	-	306 LBS.	5.5	460	3PH	15A	PROGRAMMABLE THERMOSTAT W/ REMOTE TEMPERATURE AND HUMIDITY SENSOR.	A,B,C
FC-3	BAR/DINING	MBH 68	20.0	51	78	44	55	6.0	14.2	9.7	2000	1.0	3.0	31	600	2000	CARRIER	42DHA22	TWO-STAGE ELECTRIC HEAT	331 LBS.	34.0	460	3PH	35A	PROGRAMMABLE THERMOSTAT W/ REMOTE TEMPERATURE AND HUMIDITY SENSOR.	A,B,C
FC-4	BAR/DINING	MBH 68	20.0	51	78	44	55	6.0	14.2	9.7	2000	1.0	3.0	31	600	2000	CARRIER	42DHA22	TWO-STAGE ELECTRIC HEAT	331 LBS.	34.0	460	3PH	35A	PROGRAMMABLE THERMOSTAT W/ REMOTE TEMPERATURE AND HUMIDITY SENSOR.	A,B,C
FC-5	BAR/DINING	MBH 102	30.0	79	125	44	55	7.5	22.4	9.8	3000	1.0	3.0	31	900	3000	CARRIER	42DHA30	TWO-STAGE ELECTRIC HEAT	374 LBS.	52.6	460	3PH	60A	PROGRAMMABLE THERMOSTAT W/ REMOTE TEMPERATURE AND HUMIDITY SENSOR.	A,B,C
FC-6	PDR	MBH 34	10.0	30	46	44	55	3.0	8.6	12.9	1125	1.0	1.0	12	300	1125	CARRIER	42DHA12	TWO-STAGE ELECTRIC HEAT	227 LBS.	17.7	460	3PH	20A	PROGRAMMABLE THERMOSTAT W/ REMOTE TEMPERATURE AND HUMIDITY SENSOR.	A,B,C
PLFC-1	PDR #123	MBH 34	10.0	124	135	48	58	10.0	28.1	23.1	3980	1.5	3.0	60	1200	3980	CARRIER	42BHE40	TWO-STAGE ELECTRIC HEAT	983 LBS.	20.1	460	3PH	25A	PROGRAMMABLE THERMOSTAT W/ REMOTE TEMPERATURE AND HUMIDITY SENSOR.	A,B,C
PLFC-2	EXIST BAR CELLAR	MBH 28	8.0	78	95	48	58	7.5	19.8	10.0	2380	1.5	3.0	12	715	2380	CARRIER	42BHE30	TWO-STAGE ELECTRIC HEAT	374 LBS.	15.8	460	3PH	20A	PROGRAMMABLE THERMOSTAT W/ REMOTE TEMPERATURE AND HUMIDITY SENSOR.	A,B,C

NOTES:

A. FURNISHED AND INSTALLED BY MECHANICAL CONTRACTOR COMPLETE. MECHANICAL CONTRACTOR TO PROVIDE ALL MEANS, METHODS, AND MATERIALS NECESSARY FOR COMPLETE INSTALLATION. INCLUDE CONDENSATE DRAIN, DRAIN PAN AND CONDENSATE PUMP WHERE REQUIRED.
 B. PROVIDE DRAIN PAN DETECTION OPTION FOR FC OR PROVIDE SEPARATE DETECTORS TO ENSURE UNIT SHUTOFF IN THE EVENT OF THE CONDENSATE DRAIN OBSTRUCTION.
 C. MAINTAIN MANUFACTURER'S RECOMMENDED SERVICE CLEARANCES.

MECHANICAL EQUIPMENT SCHEDULE

MARK	AREA SERVED	HEATING		COOLING				FAN SECTION		FRESH AIR DATA		MANUFACTURER			GENERAL		ELECTRICAL			CONTROLS AND REMARKS	NOTE				
		load	input	output	type	load	cap	evt	lvt	nm. lbs	gpm	ft. head	cfm	e.s.p.	hp	people	min.cfm	act.cfm	name			model number	options	weight	m.c.o.
MUA-1	KITCHEN	MBH 640	MBH 771	MBH 625	GAS	-	-	-	-	7250	0.5	7.5	-	7250	7250	GREASE MASTER	GRTU4-1800-30	BUILT IN OUTSIDE AIR DAMPER	3442 LBS.	13.8	480	3PH	20A	INTEGRATED DUCT MOUNTED DISCHARGE AIR TEMPERATURE SENSOR	A,B

NOTES:

A. FURNISHED BY OWNER AND INSTALLED BY MECHANICAL CONTRACTOR COMPLETE. MECHANICAL CONTRACTOR TO PROVIDE ALL MEANS, METHODS, AND MATERIALS NECESSARY FOR COMPLETE INSTALLATION.
 B. CONTRACTOR TO SET THE HUMIDITY CONTROLS TO MAINTAIN 55% HUMIDITY ON RTUS.

HOOD AND FAN SCHEDULE

MARK	AREA SERVED	MANUFACTURER AND MODEL NO.	CFM	E.S.P.	HP.	WEIGHT	ELECTRICAL	LOCATION	INTERLOCK AND CONTROLS	ACCESSORIES	NOTE
PCU-1	HOODS-1, 2, 3, AND 4	AUTOCLEAN #8000	6985	2.0	-	2300 LBS.	230V/1PH	CEILING	INTERLOCK W/HOODS	508A	A
EF-1	PCU-1	COOK #2250RX	6985	4.0	10.0	INCLUDED W/PCU	460V/3PH	CEILING	INTERLOCK W/PCU-1	705	A
EF-2	DISH MACHINE	GREASE MASTER #GHSF1DD-SS	650	0.5	0.5	179 LBS.	115V/1PH	CEILING	INTERLOCK W/DISH MACHINE	705	A
EF-3	RESTROOM	GREASE MASTER #GHSF1DD	650	0.5	0.5	162 LBS.	115V/1PH	CEILING	INTERLOCK W/HOODS	705	A
	HOOD #1 - PREP	GREASE MASTER	1830	-	-	1075 LBS.	120V/1PH	CEILING	-	710	A,B
	HOOD #2 - COOKLINE	GREASE MASTER	1935	-	-	575 LBS.	120V/1PH	CEILING	-	710	A,B
	HOOD #3 - COOKLINE	GREASE MASTER	1300	-	-	316 LBS.	120V/1PH	CEILING	-	710	A,B
	HOOD #4 - COOKLINE	GREASE MASTER	1920	-	-	587 LBS.	120V/1PH	CEILING	-	710	A,B

NOTES:

A. FURNISHED BY OWNER AND INSTALLED BY MECHANICAL CONTRACTOR COMPLETE. MECHANICAL CONTRACTOR TO PROVIDE ALL NECESSARY COMPONENTS NOT SUPPLIED WITH UNIT.
 B. HOOD TO BE MANUFACTURED FOR ZERO CLEARANCE TO COMBUSTIBLES WHERE REQUIRED.

CIRCULATOR PUMP SCHEDULE

MARK	SYSTEM	TYPE	GPM	FT HEAD	MFG	MODEL	ELECTRIC	NOTE
P-1	CW CIRC	FLANGED	145	36.0	GRUNDFOS	98126860	230V1PH 6.8A	-

NOTES:

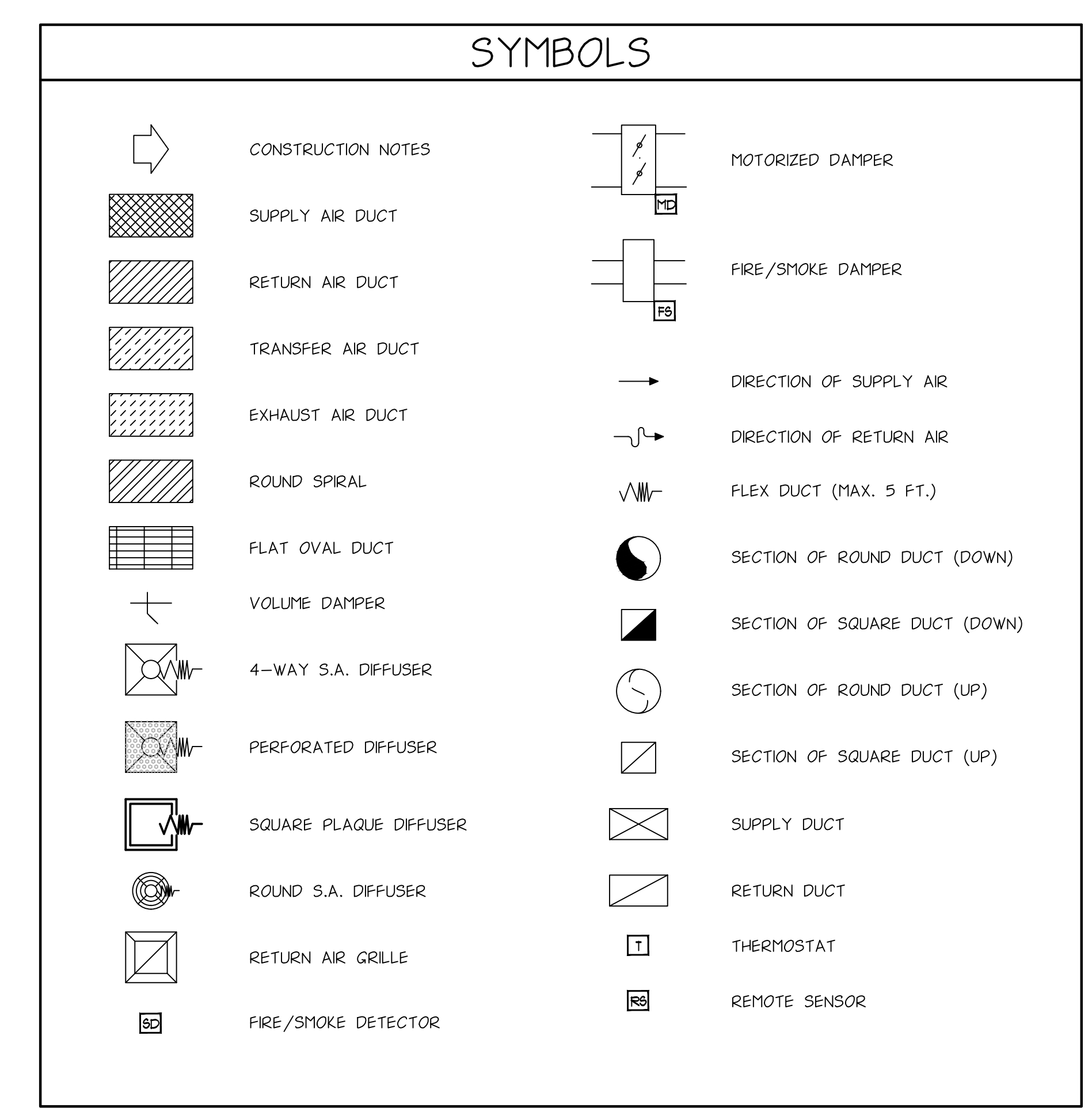
-
-
-

AIR BALANCE DATA

MARK	DESCRIPTION	AIR - CFM				NOTES
		KITCHEN FRESH	DINING FRESH	KITCHEN EXHAUST	DINING EXHAUST	
PL-FC1	EXIST. PLACEBO BAR		1200			
PL-FC2	EXIST. PLACEBO BAR		75			
FC-1	KITCHEN	900				
FC-2	EXPO LINE		675			
FC-3	RAISED DINING B		600			
FC-4	RAISED DINING / BAR A		600			
FC-5	BAR DINING B / ENTRY		900			
FC-6	P.D.R.		300			
EF-1	HOOD-1, 2, 3, 4	850	1845	1830	515	
EF-2	DISH MACHINE			(650)		B
EF-3	RESTROOMS				650	
MUA-1	FC SYSTEM & KITCHEN	(3645)	(4940)			B
	DINING TOTAL		6885		5805	
	KITCHEN TOTAL	1750		1830		A
	GRAND TOTAL		8635		7635	

NOTES:

A. KITCHEN TO BE BALANCED AT A MINIMUM 1% NEGATIVE.
 B. VOLUMES SHOWN IN (BRACKETS) ARE INTERMITTENT AND ARE INTERLOCKED WITH THE LIGHTS, THEREFORE ARE NOT IN THE TOTAL.



DIFFUSER SCHEDULE

SYMBOL	MARK	TYPE	SIZE	MANUFACTURER & MODEL NO.	OPTIONS	MATERIAL	NOTES
	S-1	SPIRAL DUCT MOUNT	14/6	PRICE #5DC OR EQUAL	DOUBLE DEFLECTION BLADES	STEEL	MOUNT HORIZONTALLY & ADJUST BLADES
	S-2	DUCT OR SURFACE MOUNT	14X6	PRICE #500 OR EQUAL	DOUBLE DEFLECTION BLADES	STEEL	MOUNT HORIZONTALLY & ADJUST BLADES
	S-3	LAY IN OR SURFACE MOUNT	24X24	PRICE #A1D-4A OR EQUAL	SR ADAPTER	ALUMINUM	ADJUST BLADES
	S-4	LAY IN OR SURFACE MOUNT	24X24	PRICE #APDC OR EQUAL	SR ADAPTER	ALUMINUM	ADJUST PATTERN CONTROLLERS
	S-5	SURFACE MOUNTING	24X24	PRICE #SPD OR EQUAL	PRICE #VCRB VOLUME DAMPER	STEEL	INSULATION BLANKET
	S-6	CEILING OR DUCT MOUNT	36f. OR 48f.	PRICE #SDS150 OR EQUAL	THREE SLOTS	ALUMINUM	ADJUST BLADES
	R-2	LAY IN OR DUCT MOUNT	48X24	PRICE #80 OR EQUAL		ALUM.	NO FILTER
	R-3	SIDE WALL OR SURFACE MOUNT	SIZED ON PLAN	PRICE #80 OR EQUAL	GRID SIZE AND ANGLE	ALUMINUM	NO FILTER
	R-1	LAY IN OR SURFACE MOUNT	12X12 OR 24X24	PRICE #80 OR EQUAL	GRID SIZE AND ANGLE	ALUMINUM	NO FILTER

ISSUE DATE: 28 APRIL 25
27 MAY 25
03 JULY 25
11 JULY 25
15 AUGUST 25
28 AUGUST 25

ISSUE DESCRIPTION:
ISSUED FOR PERMIT FOR PLUMBING & MECHANICAL
ISSUED FOR OWNER CHANGES
ISSUED FOR PERMIT AMENDMENT
ISSUED FOR ELECTRICAL PERMIT AMENDMENT
ISSUED FOR MECHANICAL CHANGES

backer/nestor
ARCHITECTURE + DESIGN
600 N. CONVERSE ST. #200
DALLAS, TX 75201
TEL: 469-761-1111

PREPARED FOR:
FABIO VIVIANI HOSPITALITY
3000 SOUTH HULEN ST., DALLAS, TX 75206

PROPOSED TENANT BUILD-OUT & RENOVATION FOR:

RESTAURANT & BAR

5380 MEDFAC HWY., CINCINNATI, OH 45227

PROJECT NUMBER: 25003

REVISIONS: ECI, SFM

MECHANICAL SCHEDULES

PROJECT NAME: FILE NAME: DRAWN BY: APPROVER: DRAWING TITLE: DRAWING SCALE: DATE ISSUED: 16-5/2024

PROFESSIONAL SEAL:

SHEET NUMBER: **M3**

© 2025 all rights reserved

HOOD INFORMATION - JOB#7482039

HOOD NO	TAG	MODEL	MANUFACTURER	LENGTH	MAX COOKING TEMP	TYPE	APPLIANCE DUTY	DESIGN CFM/FT	TOTAL EXH CFM	EXHAUST PLENUM				TOTAL SUPPLY CFM	HOOD CONSTRUCTION	HOOD CONFIG		
										WIDTH	LENG	HEIGHT	DIA			CFM	VEL	SP
1	Prep	6024 GSN-2-PSP-F	GREASEMASTER	10' 2"	600 DEG	I	HEAVY	180	1830	4'	14'	1830	1712	-0.894'	1280	430 SS WHERE EXPOSED	ALONE	ALONE
2	ML-L	6024 GSN-2-PSP-F	GREASEMASTER	10' 9"	600 DEG	I	HEAVY	180	1935	4'	16'	1935	1386	-0.726'	1300	430 SS WHERE EXPOSED	LEFT	ALONE
3	ML-C	6024 GSN-2-PSP-F	GREASEMASTER	5' 2"	600 DEG	I	HEAVY	252	1300	4'	14'	1300	1216	-0.686'	640	430 SS WHERE EXPOSED	MIDDLE	ALONE
4	ML-R	6024 GSN-2-PSP-F	GREASEMASTER	10' 8"	600 DEG	I	HEAVY	180	1920	4'	16'	1920	1375	-0.716'	1380	430 SS WHERE EXPOSED	RIGHT	ALONE
5	Dish	5424 VGS-G	GREASEMASTER	6' 0"	700 DEG	II	N/A	108	650	4'	10'	650	1192	-0.080'	0	430 SS 100%	ALONE	ALONE

GREASE MASTER HOODS ARE BUILT IN COMPLIANCE WITH UL 710 AND NFPA 96 AND ARE RECOGNIZED BY ONE OR MORE OF THE FOLLOWING:
ETL SANITATION LISTED
ETL LISTED FILE# 3054804-001

FAN #3 GMRTU4-I.800-30MF - HEATER (MAU-1)

- NOTES:
1. ROOF OPENING MUST BE 2" SMALLER THAN CURB DIMENSIONS IN BOTH DIRECTIONS.
2. DO NOT OBSTRUCT OUTSIDE AIR INLET, OUTSIDE AIR COIL OR OUTSIDE AIR FAN.
3. FLOOR MOUNT ISOLATORS LOCATED 1" FROM EITHER DIRECTION OF BASE, 39 5/8" FROM END OF BASE AND 43 3/8" FROM SIDE OF BASE. ACCOUNT FOR AN ADDITIONAL 5" FOR ISOLATOR HEIGHT.
4. QUANTITIES SUBJECT TO CHANGE DEPENDING ON FILTER TYPES.
5. 3/4" NPT SS GAS CONN. FOR 200-400 MBH FURNACES 1" NPT SS GAS CONN. FOR 500 MBH FURNACES.
6. EXTERIOR GAS CONNECTION PROVIDED BY FACTORY WITH QUICK SEAL AND ANTI-ROTATION BRACKET.

*NOTE: SUPPLY DUCT MUST BE INSTALLED TO MEET SMACNA STANDARDS. A MINIMUM STRAIGHT DUCT LENGTH MUST BE MAINTAINED DOWNSTREAM OF UNIT DISCHARGE AS OUTLINED IN AMCA PUBLICATION 201. WHEN USING RECTANGULAR DUCTWORK, ELBOWS MUST BE RADIUS THROAT, RADIUS BACK WITH TURNING VANES. FLEXIBLE DUCTWORK AND SQUARE THROAT/SQUARE BACK ELBOWS SHOULD NOT BE USED. ANY TRANSITION AND/OR TURNS IN THE DUCTWORK WILL CAUSE SYSTEM EFFECT. SYSTEM EFFECT WILL DRASTICALLY INCREASE STATIC PRESSURE AND REDUCE AIRFLOW. DO NOT RELY ON UNIT TO SUPPORT DUCT IN ANY WAY. FAILURE TO PROPERLY SIZE DUCTWORK MAY CAUSE SYSTEM EFFECTS AND REDUCE PERFORMANCE OF THE EQUIPMENT.
SUGGESTED STRAIGHT DUCT SIZE IS 33.875' x 21.125'.

EXHAUST FAN INFORMATION - JOB#7482039

FAN UNIT NO	TAG	QTY	FAN UNIT MODEL #	MANUFACTURER	CFM	ESP	RPM	MOTOR ENCL	HP	BHP	PHASE	VOLT	FLA	WEIGHT (LBS)	SDNES
1	DEF	1	GMSF11DD-SS	GREASEMASTER	650	0.500	1392	TEAD-ECM	0.500	0.2360	1	115	6.3	179	8.1
2	REF	1	GMSF11DD	GREASEMASTER	650	0.500	1383	TEAD-ECM	0.500	0.2310	1	115	6.3	162	8

DOAS/RTU FAN SCHEDULE - JOB#7482039

FAN UNIT NO	TAG	QTY	DOAS/RTU MODEL #	FAN INFORMATION				ELECTRICAL INFORMATION				GAS HEAT INFORMATION				NOTES					
				MANUFACTURER	BLOWER	RETURN AIR CFM	MAX OUTSIDE AIR CFM	TOTAL CFM	WEIGHT (LBS)	ESP	HP	PHASE	VOLT	MCA	MDCP		GAS TYPE	INPUT BTUS	OUTPUT BTUS	TEMP RISE	REQUIRED INPUT GAS PRESSURE
3	MAU-1	1	GMRTU4-1800-30	GREASEMASTER	30MF-4-RTU	0	7432	7432	3442	0.500	7.50	3	460	13.8A	20A	NATURAL	790342	640177	70°F	7 IN. W.C. - 14 IN. W.C.	1,2,3,4,5,6

- NOTES:
1. DIRECT DRIVE PLENUM BLOWER. BELT DRIVEN BLOWERS ARE NOT ACCEPTABLE.
2. INTEGRATED MONITORING VIA CELLULAR CONNECTION BY MANUFACTURER.
3. FACTORY COMMISSIONING WITH 5 YEAR PARTS WARRANTY, 25 YEAR WARRANTY ON STAINLESS STEEL HEAT EXCHANGER.
4. 2" EXTERIOR DUAL-WALL CONSTRUCTION W/ R-13 INSULATION-MINIMUM 20GA EXTERIOR W/ 14GA BASE.
5. 8% EFFICIENT FURNACE, WITH MODULATING INDUCER TO MAINTAIN CONSTANT COMBUSTION EFFICIENCY ACROSS FIRING RANGE. 12:1 TURNDOWN WITH NG AND 10:1 TURNDOWN WITH LP.
6. SUPPLY CFM MONITORING INTEGRAL TO UNIT WITH CFM MEASUREMENT INCLUDED THROUGH DIGITAL INTERFACE.

HOOD OPTIONS

HOOD NO	TAG	OPTION
1	Prep	FIELD WRAPPER 18.00" HIGH FRONT, RIGHT. LEFT END STANDOFF (FINISHED) 1" WIDE 60" LONG INSULATED. BALANCE DAMPERS. INSULATION FOR BACK OF HOOD. RIGHT VERTICAL END PANEL 27" TOP WIDTH, 21" BOTTOM WIDTH, 80" HIGH INSULATED 430 SS. LEFT WALL AS END PANEL.
2	ML-L	FIELD WRAPPER 18.00" HIGH FRONT. LEFT END STANDOFF (FINISHED) 1" WIDE 60" LONG INSULATED. BALANCE DAMPERS. LEFT WALL AS END PANEL.
3	ML-C	FIELD WRAPPER 18.00" HIGH FRONT. BALANCE DAMPERS. INSULATION FOR BACK OF HOOD.
4	ML-R	FIELD WRAPPER 18.00" HIGH FRONT, RIGHT. RIGHT END STANDOFF (FINISHED) 1" WIDE 60" LONG INSULATED. BALANCE DAMPERS. RIGHT WALL AS END PANEL.
5	Dish	FIELD WRAPPER 18.00" HIGH FRONT, LEFT, RIGHT.

SINGLE WALL FACTORY BUILT DUCTWORK

- ALL DUCTWORK IS REQUIRED TO BE INSTALLED WITH THE MAXIMUM SUPPORT SPACING LISTED BELOW.
- FOR A COMPLETE LIST OF APPROVED SUPPORT METHODS, SEE THE INSTALLATION AND OPERATION MANUAL.
- DUCTWORK SHALL SLOPE NOT LESS THAN 1/16" PER LINEAR FOOT TOWARDS THE HOOD OR AN APPROVED GREASE COLLECTION RESERVOIR.
- WHERE HORIZONTAL DUCTS EXCEED 75 FEET IN LENGTH, THE SLOPE SHALL NOT BE LESS THAN 3/16" PER LINEAR FOOT.

DUCT DIAMETER	HORIZONTAL SUPPORT (FT)	VERTICAL SUPPORT (FT)	VERTICAL CURB SUPPORT (FT)
5"	10'	10'	24'
6"	10'	10'	24'
7"	10'	10'	24'
8"	10'	10'	24'
10"	10'	10'	24'
12"	10'	10'	24'
14"	10'	10'	24'
16"	10'	10'	24'
18"	10'	10'	24'
20"	10'	10'	24'
22"	10'	10'	24'
24"	10'	10'	24'
26"	10'	10'	24'
28"	10'	10'	24'
30"	10'	10'	24'
32"	10'	10'	24'
34"	10'	10'	24'
36"	10'	10'	24'

FIRE SYSTEM INFORMATION - JOB#7482039

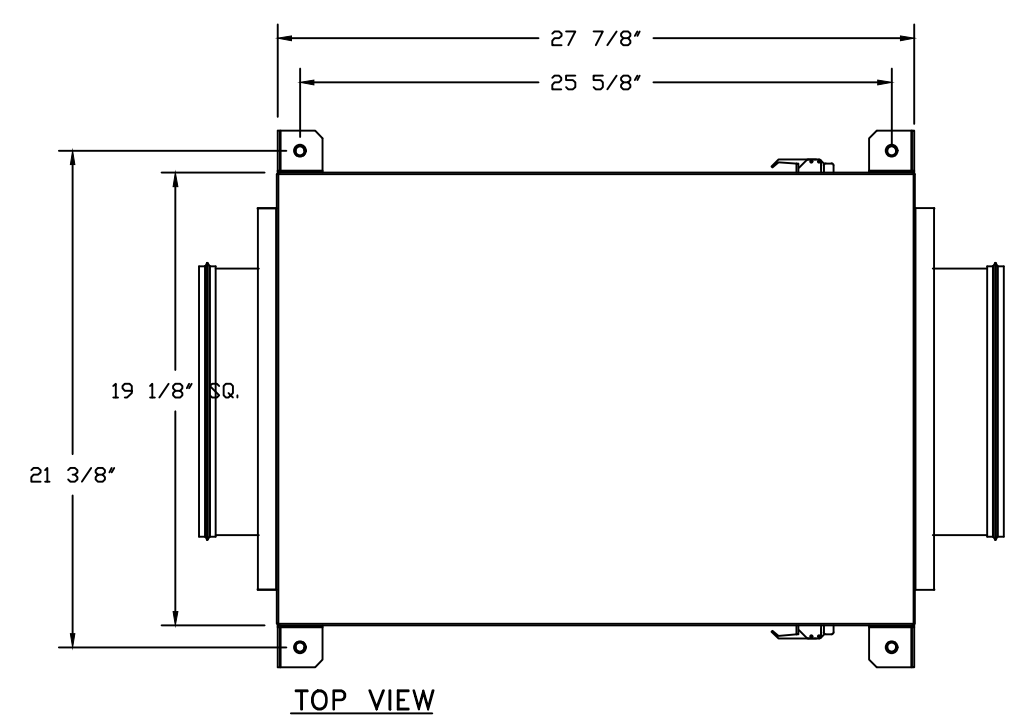
FIRE SYSTEM NO	TAG	TYPE	SIZE	MAX FP	DESIGN FP	INSTALLATION SYSTEM	LOCATION ON HOOD
1		TANK FS	4.0/4.0	40	116	FIRE CABINET RIGHT	RIGHT, HOOD 1
			4.0/4.0/4.0/4.0	80		WALL UTILITY CABINET LEFT	N/A

GAS VALVE(S)

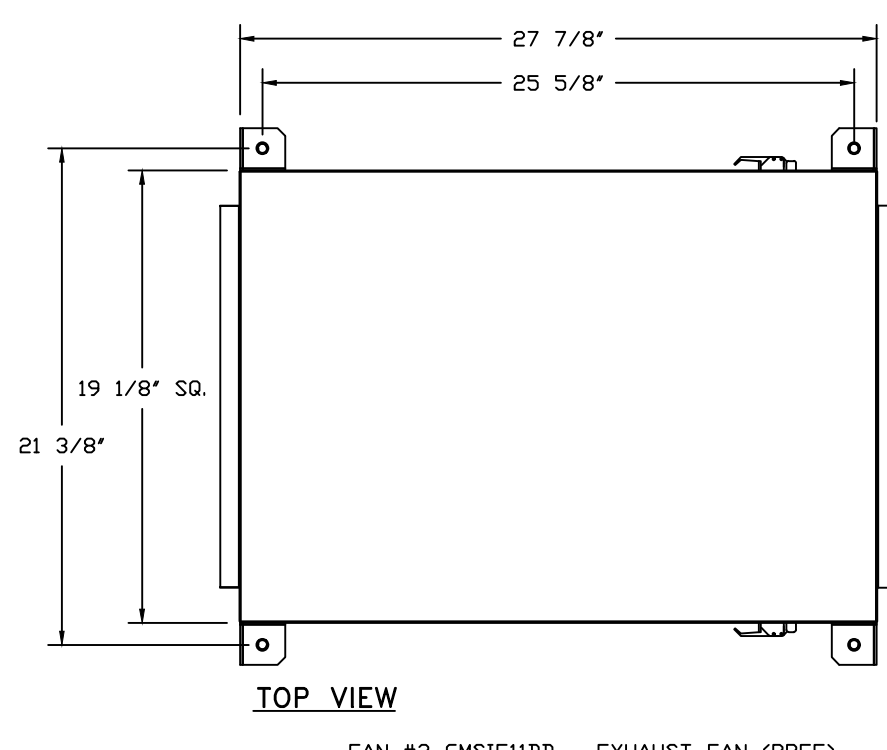
FIRE SYSTEM NO	TAG	TYPE	SIZE	SUPPLIED BY
1		SC ELECTRICAL	3.000	GREASEMASTER

WALL-MOUNT UTILITY CABINET

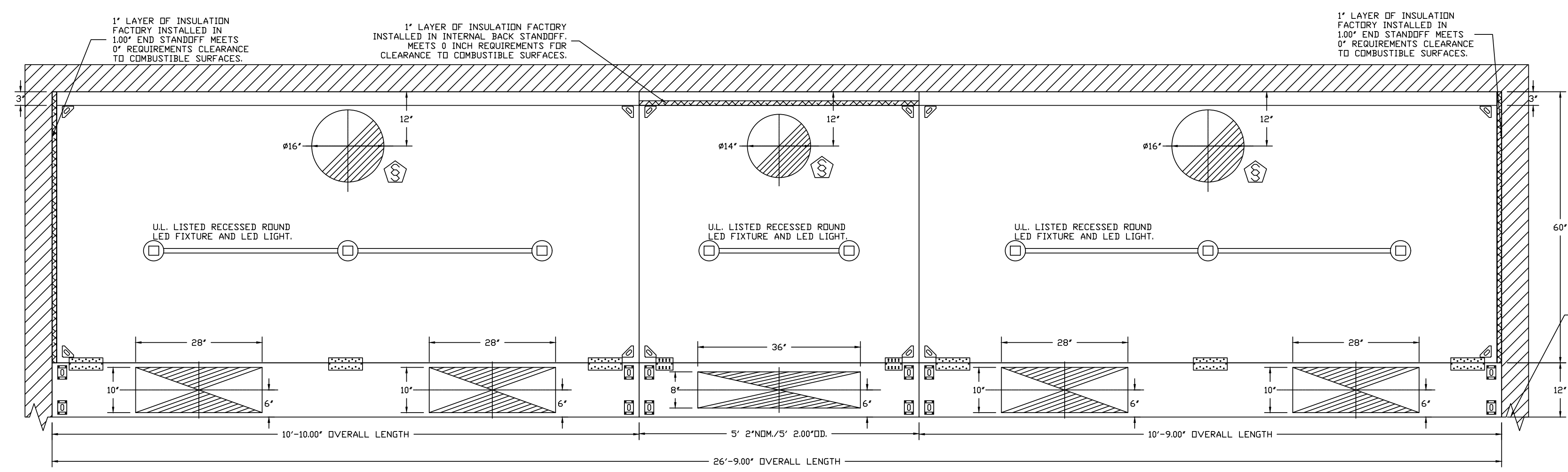
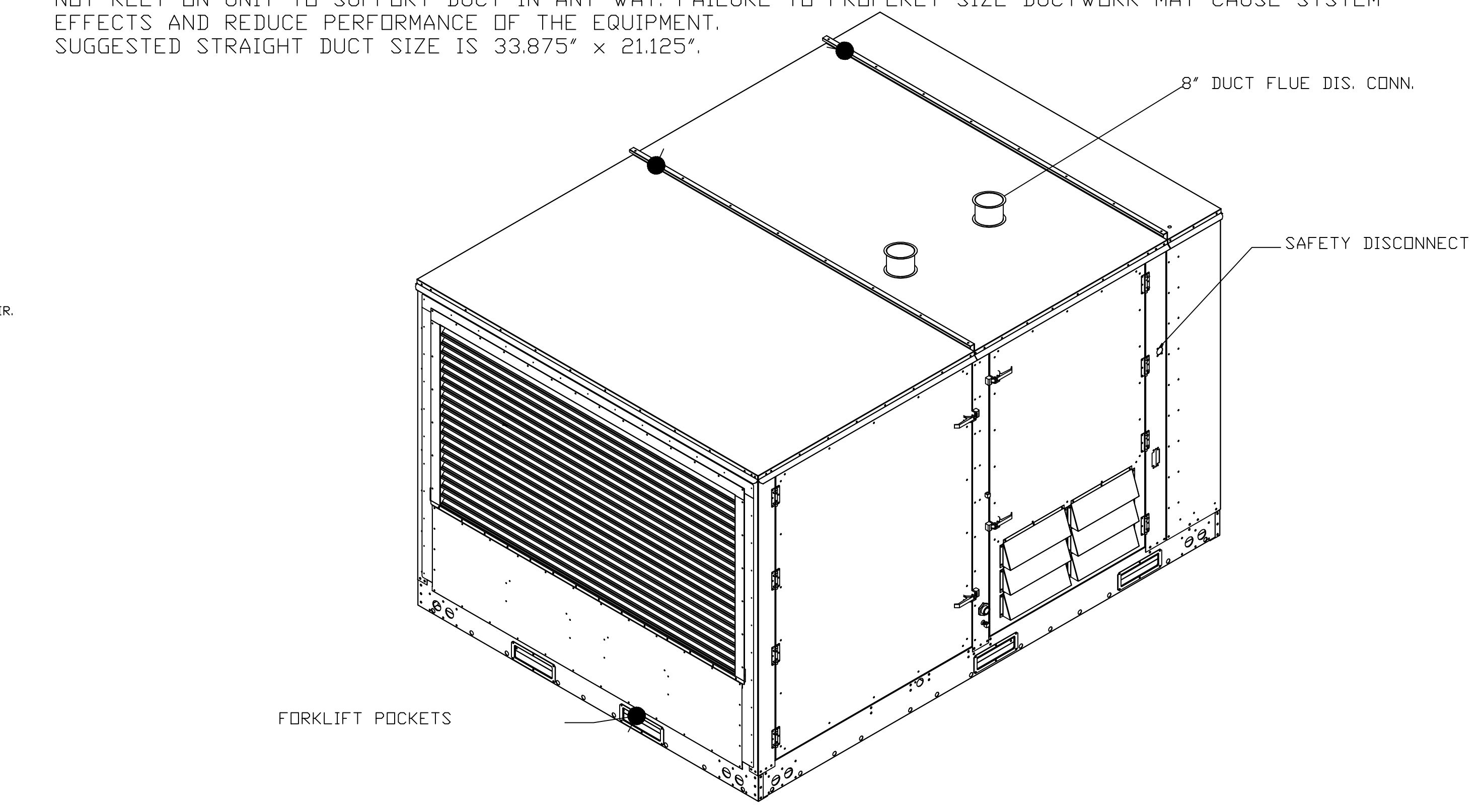
HOOD NO	LOCATION	SIZE	TYPE	UTILITY CABINET(S)		WEIGHT
				FIRE SYSTEM	ELECTRICAL SWITCHES	
1	WALL MNT	12"x60"x30"	TANK FS	4.0/4.0/4.0/4.0		500.00 LBS



- FEATURES:**
- DIRECT DRIVE CONSTRUCTION (NO BELTS/PULLEYS).
- TWO ACCESS DOORS FOR EASY ACCESS.
- BACKWARD INCLINED NON-OVERLOADING WHEELS.
- UL705 LISTING.
- AMCA AIR & SOUND CERTIFIED.
- THERMAL OVERLOAD PROTECTION (SINGLE PHASE).
- 2" NPT THREADED DRAIN CENTERED IN BASE (SS MODELS).
- OPTIONS:**
- SIF - STAINLESS STEEL HOUSING CONSTRUCTION.
- SIF1 - INLET - STANDARD 12" DUCT CONNECTION.
- SIF - HORIZONTAL OVERHEAD MOUNT - PRE-INSTALLED MOUNTS (11-36).
- ECM WINDING PACKAGE - EXHAUST - MANUAL OR 0-10VDC REFERENCE SPEED CONTROL - (MCC - TELECO) CCM ROTATION.
- HANGING SPRING VIBRATION ISOLATORS (SET OF 4). FOR INDOOR OR OUTDOOR USE WITH SQUARE INLINE FANS (SIAIS2S).
- SIF1-SS - STRAIGHT DISCHARGE, STANDARD 12" DUCT CONNECTION.
- FULL CRATING FOR EXHAUST FANS.
- 2 YEAR PARTS WARRANTY.



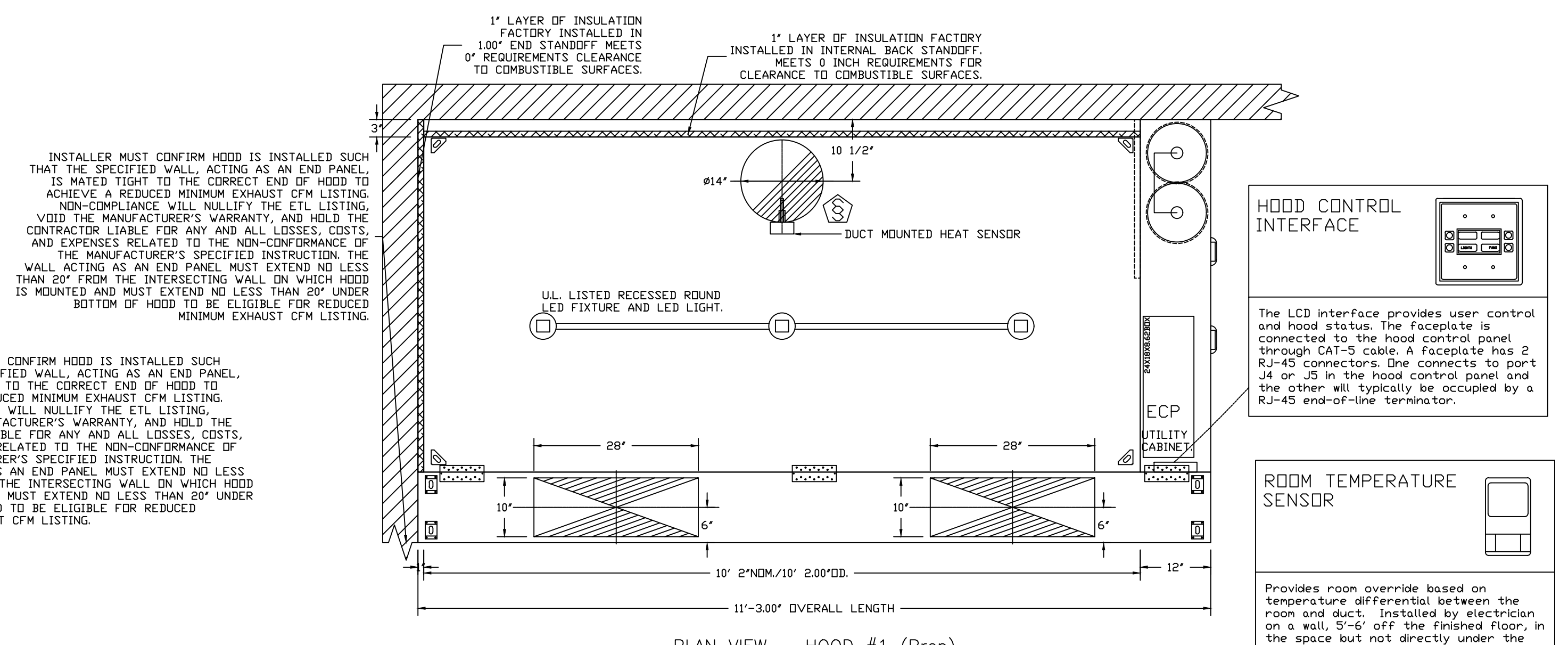
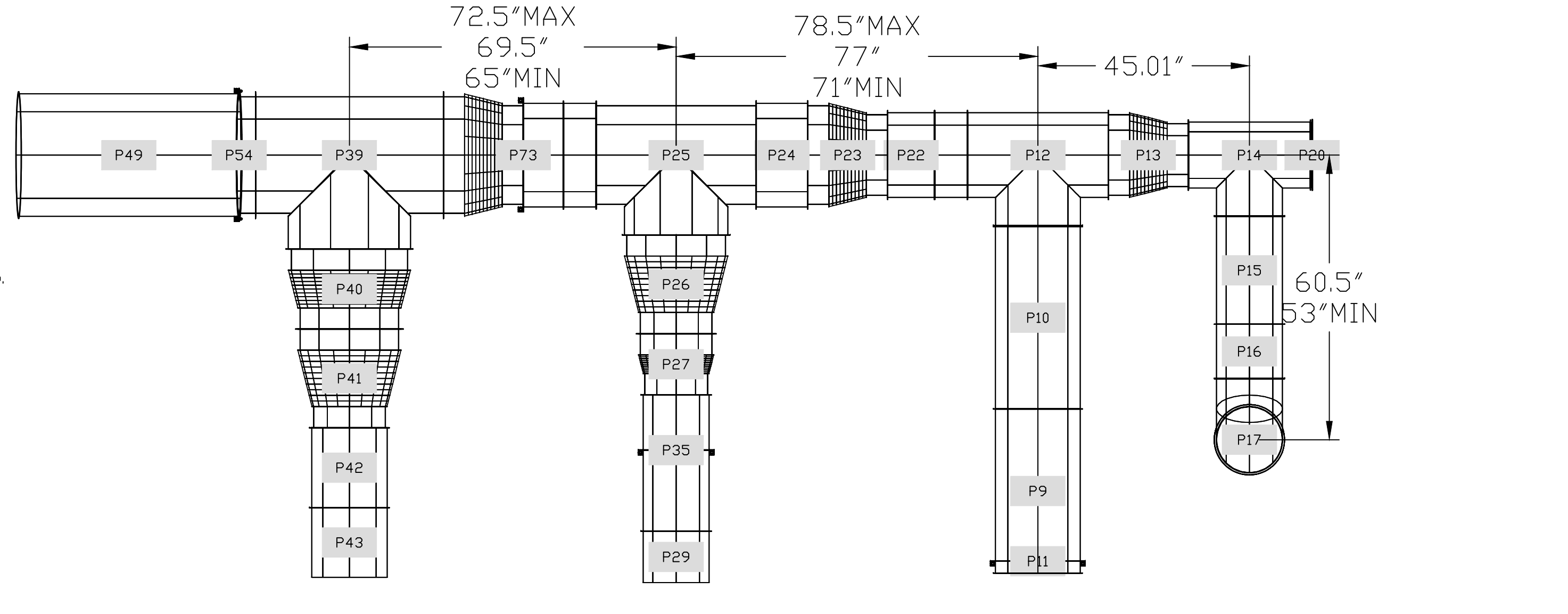
- FEATURES:**
- DIRECT DRIVE CONSTRUCTION (NO BELTS/PULLEYS).
- TWO ACCESS DOORS FOR EASY ACCESS.
- BACKWARD INCLINED NON-OVERLOADING WHEELS.
- UL705 LISTING.
- AMCA AIR & SOUND CERTIFIED.
- THERMAL OVERLOAD PROTECTION (SINGLE PHASE).
- OPTIONS:**
- SIF - HORIZONTAL OVERHEAD MOUNT - PRE-INSTALLED MOUNTS (11-36).
- ECM WINDING PACKAGE - EXHAUST - MANUAL OR 0-10VDC REFERENCE SPEED CONTROL - (MCC - TELECO) CCM ROTATION.
- HANGING SPRING VIBRATION ISOLATORS (SET OF 4). FOR INDOOR OR OUTDOOR USE WITH SQUARE INLINE FANS (SIAIS2S).
- SIF1-SS - STRAIGHT DISCHARGE, SQUARE DUCT CONNECTION.
- SIF1 - INLET - SQUARE DUCT CONNECTION.
- FULL CRATING FOR EXHAUST FANS.
- 2 YEAR PARTS WARRANTY.



PLAN VIEW - HOOD #2 (ML-L)
10' 9.00\"/>

PLAN VIEW - HOOD #3 (ML-C)
5' 2.00\"/>

PLAN VIEW - HOOD #4 (ML-R)
10' 8.00\"/>



1" LAYER OF INSULATION FACTORY INSTALLED IN 100" END STANDOFF MEETS 0" REQUIREMENTS CLEARANCE TO COMBUSTIBLE SURFACES.

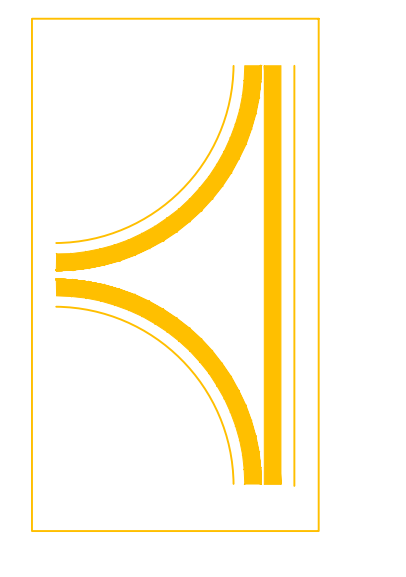
INSTALLER MUST CONFIRM HOOD IS INSTALLED SUCH THAT THE SPECIFIED WALL, ACTING AS AN END PANEL, IS MATED TIGHT TO THE CORRECT END OF HOOD TO ACHIEVE A REDUCED MINIMUM EXHAUST CFM LISTING. NON-COMPLIANCE WILL NULLIFY THE ETL LISTING. VOID THE MANUFACTURER'S WARRANTY, AND HOLD THE CONTRACTOR LIABLE FOR ANY AND ALL LOSSES, COSTS, AND EXPENSES RELATED TO THE NON-COMFORMANCE OF THE MANUFACTURER'S SPECIFIED INSTRUCTION. THE WALL ACTING AS AN END PANEL MUST EXTEND NO LESS THAN 20" FROM THE INTERSECTING WALL ON WHICH HOOD IS MOUNTED AND MUST EXTEND NO LESS THAN 20" UNDER BOTTOM OF HOOD TO BE ELIGIBLE FOR REDUCED MINIMUM EXHAUST CFM LISTING.

INSTALLER MUST CONFIRM HOOD IS INSTALLED SUCH THAT THE SPECIFIED WALL, ACTING AS AN END PANEL, IS MATED TIGHT TO THE CORRECT END OF HOOD TO ACHIEVE A REDUCED MINIMUM EXHAUST CFM LISTING. NON-COMPLIANCE WILL NULLIFY THE ETL LISTING. VOID THE MANUFACTURER'S WARRANTY, AND HOLD THE CONTRACTOR LIABLE FOR ANY AND ALL LOSSES, COSTS, AND EXPENSES RELATED TO THE NON-COMFORMANCE OF THE MANUFACTURER'S SPECIFIED INSTRUCTION. THE WALL ACTING AS AN END PANEL MUST EXTEND NO LESS THAN 20" FROM THE INTERSECTING WALL ON WHICH HOOD IS MOUNTED AND MUST EXTEND NO LESS THAN 20" UNDER BOTTOM OF HOOD TO BE ELIGIBLE FOR REDUCED MINIMUM EXHAUST CFM LISTING.

REVISIONS

NO.	DESCRIPTION	DATE

GREASE MASTER
608 MATTHEWS-MINT HILL RD, STE 105, MATTHEWS, NC 28105
TELEPHONE 704-844-6907 FAX 704-844-8013
WWW.GREASEMASTER.COM INFO@GREASEMASTER.COM



Zingaro Cincinnati Med Space- R1
5380 Medpace Way,
Cincinnati, OH, 45227

DATE: 4/21/2025
DWG.#: 7482039
DRAWN BY: dloreidt
SCALE: 3/4" = 1'-0"
MASTER DRAWING

SHEET NO. 1

ALL EQUIPMENT, MATERIALS, WORK, ETC. LOCATED ON THE EXTERIOR OF THE SPACE ARE SHOWN FOR REFERENCE AND NOT INCLUDED IN THE INTERIOR PERMIT SCOPE.

barkeeper/nestor+ ARCHITECTURE + DESIGN
608 MATTHEWS-MINT HILL RD, STE 105, MATTHEWS, NC 28105
TELEPHONE 704-844-6907 FAX 704-844-8013
WWW.GREASEMASTER.COM INFO@GREASEMASTER.COM

FABIO VIVIANI HOSPITALITY
3000 SOUTH HULEN ST., DALLAS, TX 75206

RESTAURANT & BAR
5380 MEDPACE WAY, CINCINNATI, OH 45227

PROPOSED TENANT BUILD-OUT & RENOVATION FOR:
Zingaro Cincinnati Med Space- R1
5380 Medpace Way,
Cincinnati, OH, 45227

DATE: 4/21/2025
DWG.#: 7482039
DRAWN BY: dloreidt
SCALE: 3/4" = 1'-0"
MASTER DRAWING

SHEET NO. 1

SHEET NUMBER: M5

© 2025 all rights reserved