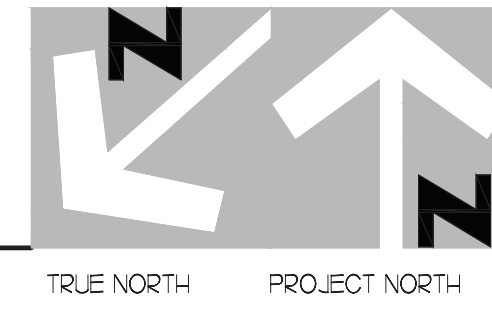


MECHANICAL DEMOLITION PLAN
1/4" = 1'-0"



DEMOLITION LEGEND	
	EXISTING EQUIPMENT, DUCT, AIR DEVICES ETC. TO REMAIN INTACT.
	EXISTING EQUIPMENT, DUCT, AIR DEVICES ETC. TO BE DEMOLISHED.

LEGEND			
A-12-400	TYPE - NECK SIZE - CFM	EF#1	EX-HAUST FAN #1 (TYP.)
	SPIN-IN FITTING WITH MANUAL BALANCING DAMPER, WITHOUT SCOOP	ACH#1	AIR CONDITIONING UNIT #1 (TYP.)
	SPIN-IN HARD OR FLEXIBLE O DIFFUSER		RETURN EXHAUST (TYP.)
	EXISTING EQUIPMENT, DUCT, & AIR DEVICE		SUPPLY DIFFUSER, SQ FACE (TYP.)
	NEW EQUIPMENT, DUCT, & AIR DEVICE		PLAN NOTE REFERENCE
	REMOTE TEMPERATURE SENSOR		MANUAL VOLUME DAMPER
	HUMIDITY SENSOR		DIRECTION OF THROW ON DIFFUSER
	STROBE AUDIOVISUAL ALARM-ANNUNCIATOR		CO2 SENSOR
	DUCT SIZE (REVERSE FOR ELEVATION VIEWS) 1ST NUMBER - HORIZONTAL DIMENSION 2ND NUMBER - VERTICAL DIMENSION		PULL STATION
	POINT OF DISCONNECTION		CONTROL PANEL
	POINT OF CONNECTION		SMOKE DETECTOR
	INDICATES 2-WAY DIFFUSER. INDICATES BLANKED OFF SIDE		

DEMOLITION NOTES

- CONTRACTOR IS RESPONSIBLE FOR OBTAINING ALL NECESSARY PERMITS AND PAYING ALL APPLICABLE FEES.
- DISPOSAL OF EQUIPMENT AND MATERIALS REQUIRED TO BE REMOVED SHALL BE THE RESPONSIBILITY OF THE CONTRACTOR PERFORMING THE WORK.
- DE-ENERGIZE ALL ELECTRICAL CIRCUITS RELATED TO EQUIPMENT THAT WILL BE MOVED OR REMOVE PRIOR TO STARTING WORK. DE-ENERGIZE CIRCUITS SHALL BE PROTECTED WITH LOCKING DEVICES USING APPROPRIATE WARNING LABELS.
- MECHANICAL CONTRACTOR SHALL BE RESPONSIBLE FOR PATCHING ROOF AFTER REMOVAL OF EXISTING MECHANICAL EQUIPMENT. SEE ARCHITECTURAL DRAWINGS FOR ROOF PATCHING REQUIREMENTS.
- EXCEPT WHERE NOTED, EXISTING REMOTE TEMPERATURE AND/OR HUMIDITY SENSORS TO REMAIN. IF DURING RENOVATION PURPOSES, CONTROLS SHALL BE TAKEN DOWN. MECHANICAL CONTRACTOR SHALL BE RESPONSIBLE FOR REINSTALLING AND TO PROVIDE ANY ADDITIONAL WIRING NEEDED.
- MECHANICAL CONTRACTOR SHALL PERFORM ROUTINE MAINTENANCE ON EXISTING ROOFTOP UNITS AND MAKE ANY NECESSARY REFRIGERANT WITH NO LEAKS, NEW BELTS AND REPLACE AND FAN MOTORS NECESSARY.
- DISCONNECT GAS PIPING FROM EXISTING ROOFTOP UNIT(S) TO BE REPLACED. PLUMBING CONTRACTOR WILL REMOVE EXISTING GAS PIPING TO BE DEMOLISHED.
- CONTRACTOR SHALL INDICATE SALVAGE VALUE IN BID FOR ROOFTOP UNITS BEING REPLACED.

DEMOLITION KEY NOTES

- DEMOLISH EXISTING KITCHEN HOOD, ALL ASSOCIATED GREASE DUCT, AND EXHAUST FAN ON ROOF. EXISTING EXHAUST FAN TO BE REPLACED. TURN OVER EXISTING EXHAUST FAN TO OWNER. COVER ROOF OPENING WEATHER-TIGHT FOR RE-USE. REFER TO SHEET MJ1 & M3J FOR FURTHER INFORMATION.
- EXISTING AIR CURTAIN TO BE REPLACED WITH NEW ADH. REFER TO MJ1 AND M3J.
- EXISTING HOOD AND EXHAUST FAN TO REMAIN. REFER TO SHEET MJ1, M2J, & M3J FOR FURTHER INFORMATION.
- DETACH AND DEMOLISH EXISTING AIR DEVICE SEE SHEET MJ1 FOR NEW AIR DEVICE LOCATIONS.
- EXISTING ELECTRIC COOLING/GAS HEATING ROOFTOP HVAC UNIT AND ASSOCIATED TEMPERATURE SENSOR TO REMAIN. REFER TO SHEET M3J FOR FURTHER INFORMATION.
- EXISTING AIR DEVICE TO REMAIN.

FIELD VERIFY ALL CONDITIONS

NOTE: AS NOTED IN THE SPECIFICATIONS, ALL WIRING LAYOUTS, PIPING LAYOUTS AND DUCT LAYOUTS ARE SCHEMATIC. EXACT LOCATIONS SHALL BE DETERMINED BY THE CONTRACTOR AND STRUCTURE OF THE BUILDING AND SHALL BE VERIFIED AND COORDINATED IN THE FIELD. EACH TRADE CONTRACTOR SHALL VERIFY WITH THE GENERAL CONTRACTOR THAT HE HAS THOROUGHLY REVIEWED AND COORDINATED ALL LOCATIONS AND ROUTINGS WITH ALL OTHER TRADES PRIOR TO FABRICATION OF CONDUITS, DUCTS, OR PIPING, AND START OF INSTALLATION OF SAME (INCLUDING SPRINKLER PIPING WHEN PRESENT ON JOB). ANY INSTALLATION OR CONSTRUCTION CONFLICTS WHICH OCCUR IN THE FIELD SHALL BE RESOLVED BY THE TRADE CONTRACTOR TO THE SATISFACTION OF THE OWNER AND ARCHITECT AND AT NO EXPENSE TO THE OWNER, ARCHITECT AND/OR GENERAL CONTRACTOR.

THE CONTRACTOR SHALL CONTACT THE ARCHITECT, ENGINEER OR OWNER PRIOR TO BIDDING FOR INTERPRETATIONS AND CLARIFICATIONS OF THE DESIGN AND INCLUDE IN HIS BID ALL COSTS TO MEET THE DESIGN INTENT. CLARIFICATIONS MADE BY THE ARCHITECT, ENGINEER OR OWNER AFTER BIDDING WILL BE FINAL AND SHALL BE IMPLEMENTED AT CONTRACTOR'S COST. BIDDING CONTRACTORS SHALL HAVE A WORKING KNOWLEDGE OF LOCAL CODES AND ORDINANCES AND SHALL INCLUDE IN THEIR BIDS THE COSTS FOR ALL WORK INSTALLED IN STRICT ACCORDANCE WITH GOVERNING CODES. THE PLANS AND SPECIFICATIONS NOT WITHSTANDING, THE CONTRACTOR SHALL ALERT ARCHITECT, ENGINEER OR OWNER OF ANY APPARENT DISCREPANCIES BETWEEN GOVERNING CODES AND DESIGN INTENT.



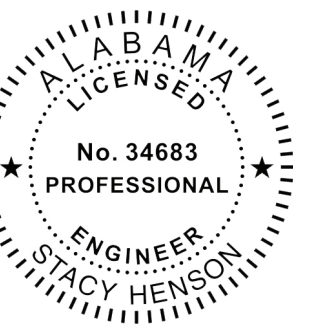
Chick-fil-A

Chick-fil-A
5200 Buffington Road
Atlanta, Georgia
30349-2998

INTERPLAN
INTERPLAN LLC
AR0011595
CA 8660
ARCHITECTURE
ENGINEERING
PERMITTING

220 E. CENTRAL PKWY., STE. 4000
ALPHAMONTE SPRINGS, FL 32701
407.645.5008

SEAL:



CHICK-FIL-A
TIGER TOWN
2052 Tiger Town Parkway
Opelika, AL
36801

FSU#01445

BUILDING TYPE / SIZE: S03-C

RELEASE:

PRINTED FOR:

Construction

REVISION SCHEDULE

NO.	DATE	DESCRIPTION
05	09/28/2022	OWNER REVISION

DATE: 11/20/21

DRAWN BY: AM

CHECKED BY: DAK

Information contained on this drawing and in all digital files produced for this project may not be reproduced or transmitted in any form or by any means, electronic, mechanical, photocopying, recording, or by any information storage and retrieval system, without the prior written permission of Interplan LLC.

SHEET: MECHANICAL DEMO PLAN

SHEET NUMBER:

2021.0087

11/20/21

AM

DAK

MECHANICAL DEMO PLAN

SHEET NUMBER

M1.0

MARIBR - 01/24/2023 12:30:08 PM

HVAC KEY NOTES

- 1 PROVIDE NEW ELECTRIC COOLING/ GAS HEATING ROOFTOP UNIT WITH PREFABRICATED, MINIMUM 14" INCH INSULATED ROOF CURB. MAINTAIN MINIMUM HEIGHT OF 8 INCHES FROM ROOF SURFACE. REFER TO HVAC SCHEDULE ON SHEET M3.1. FIELD VERIFY AND COORDINATE WITH STRUCTURAL AND ALL LOCAL AND STATE REQUIREMENTS PRIOR TO BID AND CONSTRUCTION.
- 2 FIELD VERIFY EXHAUST AIR MAINTAINS A 10 FOOT MINIMUM CLEARANCE FROM ANY FRESH AIR INTAKE AND COMPLIES WITH ALL CODE REQUIREMENTS.
- 3 PROVIDE NEW AIR DEVICE. MAXIMUM LENGTH OF FLEXIBLE DUCT RUN-OUT IS 4 FEET, NO EXCEPTIONS. FIELD VERIFY & COORDINATE LOCATIONS PRIOR TO BID & CONSTRUCTION. RE-BALANCE AIR QUANTITY AS SHOWN ON PLAN. PROVIDE WITH MANUAL VOLUME DAMPER WITH ACCESSIBILITY. ANY DEFICIENCIES AND/OR DISCREPANCIES SHALL BE REPORTED TO ARCHITECT/ENGINEER IMMEDIATELY.
- 4 PROVIDE NEW KITCHEN HOOD EXHAUST FAN REPLACING THE EXISTING FAN THROUGH THE EXISTING ROOF OPENING. LOCATE A MINIMUM OF 10 FT FROM PARAPET WALLS IF PARAPET IS LOWER THAN 42" OR FROM ANY NEW OR EXISTING OUTSIDE AIR INTAKE AS REQUIRED. COORDINATE EXACT LOCATION IN FIELD WITH EXISTING EQUIPMENT AND PIPING.
- 5 EXISTING ROOFTOP HVAC UNIT TO REMAIN. MECHANICAL CONTRACTOR TO CLEAN AND ADJUST UNIT, CHEMICALLY CLEAN COILS, PERFORM AN OIL SAMPLE TEST ON COMPRESSORS TO VERIFY CONDITION, REPLACE BELTS, VERIFY ALL CONTROLS ARE FUNCTIONAL AND MAKE SURE ALL EQUIPMENT IS IN PROPER OPERATING CONDITION. REPLACE ANY DEFECTIVE PARTS OR EQUIPMENT. GREASE AND/OR REPLACE IF REQUIRED. FAN BEARINGS, CHECK SHAFT FOR SCORING AND CHECK MOTORS FOR PROPER AMPERAGE DRAW. CLEAN OR REPLACE CONDENSATE DRAIN LINE AS REQUIRED. REBALANCE OPA AS SHOWN ON PLANS. RTU SCHEDULE. 5 KITCHEN-ENDING PRESSURIZATION SCHEDULE. FURNISH UNIT WITH THREE SETS OF STANDARD FILTERS. CONTRACTOR TO REPLACE FILTERS JUST PRIOR TO AIR BALANCE AND ONCE AGAIN AFTER FINAL STORE CLEANING IS COMPLETE. REFER TO ROOFTOP UNIT SCHEDULE SHEET M3.1 FOR FURTHER INFORMATION AND ADDITIONAL REQUIREMENTS. REPORT IN WRITING ANY PROBLEMS WHICH WOULD REQUIRE REPLACEMENT OF ROOFTOP UNIT INSTEAD OF REUSE TO THE TENANT'S CONSTRUCTION MANAGER. FIELD VERIFY EXACT CONDITION AND LOCATION PRIOR TO BID.
- 6 CONTRACTOR TO INSTALL OVERFLOW SWITCH INSIDE ROOFTOP UNIT DRAIN PAN ON DOWN-FLOW UNITS AND ALL OTHER COILS THAT DO NOT HAVE A SECONDARY DRAIN AND DO NOT HAVE A MEANS TO INSTALL AN AUXILIARY DRAIN PAN. A WATER-LEVEL MONITORING DEVICE SHALL BE INSTALLED INSIDE THE PRIMARY DRAIN PAN. THIS DEVICE SHALL SHUT OFF THE EQUIPMENT SERVED IN THE EVENT THAT THE PRIMARY DRAIN BECOMES RESTRICTED. EXTERNALLY INSTALLED DEVICES AND DEVICES INSTALLED IN THE DRAIN LINE SHALL NOT BE PERMITTED.
- 7 PROVIDE A LENNOX FACTORY INSTALLED RETURN AND SUPPLY SIDE SMOKE DETECTOR. REFER TO SCHEDULE ON SHEET M3.1 AND LENNOX SMOKE DETECTOR AND ANNUNCIATOR WIRING DIAGRAM ON SHEET M4.2. SEE ADDED BOXED NOTE SHEET M3.1 HVAC SCHEDULE REGARDING SUPPLY SIDE SMOKE DETECTOR.
- 8 R/A DUCT DROP TO BE FULL SIZE OF CURB CONNECTION. PROVIDE PLENUM BOX ABOVE CEILING AS SHOWN ON PLAN.
- 9 SEE ELEVATION ON M2.1 FOR C.J. FAN DUCTING REQUIREMENTS.

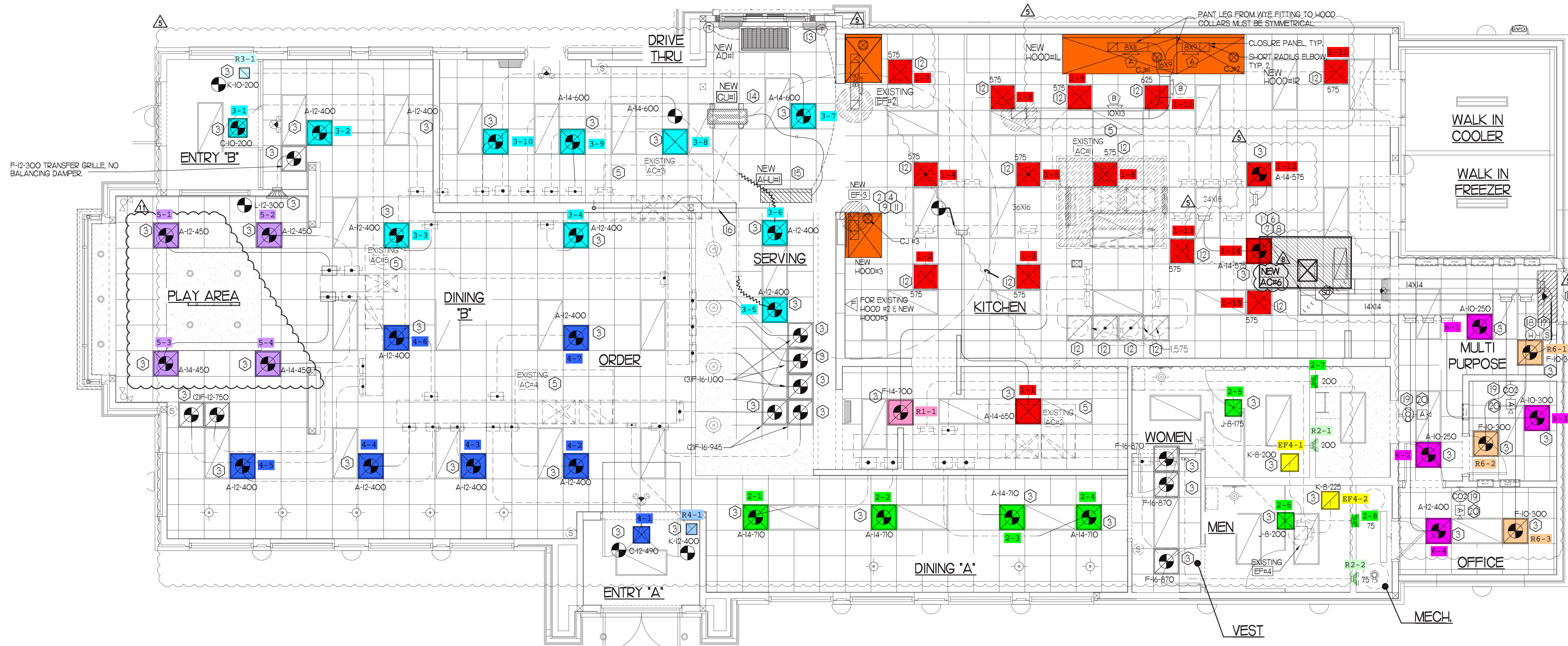
- 10 EXISTING AIR CURTAIN TO BE REPLACED AS SHOWN ON PLAN. FIELD VERIFY EXACT REQUIREMENTS PRIOR TO BID.
- 11 PROVIDE NEW FAN WITH NEW CURB AT LOCATION SHOWN ON PLAN. LOCATE A MINIMUM OF 10 FT FROM PARAPET WALLS IF PARAPET IS LOWER THAN 42" OR FROM ANY NEW OR EXISTING OUTSIDE AIR INTAKE. COORDINATE EXACT LOCATION IN FIELD WITH EXISTING EQUIPMENT AND PIPING. SEE DETAIL ON M4.1 FOR ORIENTATION OF HINGE SIDE OF FAN ON CURB.
- 12 EXISTING AIR DEVICE TO REMAIN.
- 13 LOCATE AHU TS/TAT AT 5'-0" AFF. COORDINATE EXACT LOCATION WITH OTHER TRADES. ROUTE WIRING BACK TO AHU.
- 14 SET CONDENSING UNIT ON ROOF USING TWO CURBS PLUS CPES-1 EQUIPMENT CURBS. SECURE CONDENSING UNIT TO CURBS ARRANGED IN PARALLEL. SET LONG SIDE OF CURB PARALLEL TO ROOF SLOPE FLASH INTO ROOF BY GC. FINAL LOCATION TO BE DETERMINED IN THE FIELD. ALL MAINTENANCE CLEARANCE OF NEW AND EXISTING EQUIPMENT SHALL BE MAINTAINED.
- 15 LOCATE AHU IN MOUNTED 7'-0" AFF TO BOTTOM OF UNIT. ROUTE REFRIGERANT PIPING ABOVE CEILING AND UP THRU ROOF TO CONDENSING UNIT. REFER TO M3.1 FOR MORE INFORMATION.
- 16 RUN 5/8" CONDENSATE LINE IN WALL DOWN TO DRAIN.
- 17 MOUNT NEW REMOTE TEMPERATURE SENSOR ON WALL AT 5'-0" AFF AND ROUTE WIRING BACK TO SINGOAST TEMP CONTROL PANEL.
- 18 MOUNT NEW LENNOX HUMIDITY SENSOR ON WALL ABOVE SPACE TEMP SENSOR AND ROUTE WIRING TO UNIT ON ROOF.
- 19 STRONG SYSTEMS SHALL SUPPLY AND INSTALL CO2 SENSOR ANALOX-A60. SENSOR SHALL BE MOUNTED AT 12" AFF WITH SPLASH GUARD AND CAGE. ELECTRICAL CONTRACTOR TO PROVIDE SINGLE-GANG J-BOX WITH 1/2" CONDUIT EXTENDED TO ABOVE ACCESSIBLE CEILING SPACE. INSTALL PER MANUFACTURER'S RECOMMENDATIONS AND PER LOCAL CODE REQUIREMENTS. FIELD VERIFY EXACT LOCATION AND ALL REQUIREMENTS PRIOR TO BID AND CONSTRUCTION. FOR MORE INFORMATION CONTACT STRONG SYSTEMS INTERNATIONAL, INC. C-CHRIS VERCH (770) 729-1199 OR (770) 462-2501.
- 20 STRONG SYSTEMS SHALL SUPPLY AND INSTALL CO2 ANNUNCIATOR MOUNTED AT 6'-0" AFF. ELECTRICAL CONTRACTOR TO PROVIDE SINGLE-GANG J-BOX WITH 1/2" CONDUIT EXTENDED TO ABOVE ACCESSIBLE CEILING SPACE. INSTALL PER MANUFACTURER'S RECOMMENDATIONS AND PER LOCAL CODE. FIELD VERIFY EXACT LOCATION AND ALL REQUIREMENTS PRIOR TO BID AND CONSTRUCTION FOR MORE INFORMATION CONTACT STRONG SYSTEMS INTERNATIONAL, INC. C-CHRIS VERCH (770) 729-1199 OR (770) 462-2501.

HVAC GENERAL NOTES

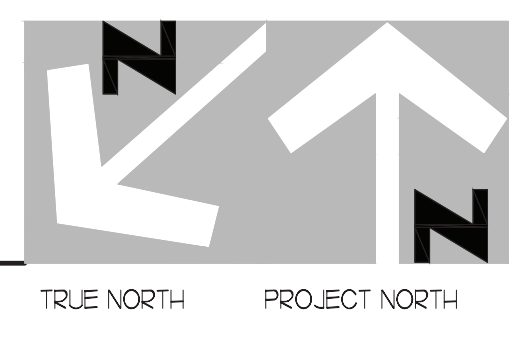
1. DUCT SIZES SERVING DIFFUSERS AND GRILLES ARE SAME SIZE AS DIFFUSER OR GRILLE NECK UNLESS NOTED OTHERWISE.
2. MECHANICAL CONTRACTOR SHALL BALANCE HVAC SYSTEM AS SHOWN ON THE PLAN & RTU SCHEDULE ON SHEET M-3.1. IF AIR FLOWS DIFFER BY MORE THAN 5%, CONTACT OF A CONSTRUCTION MANAGER.
3. NO PIPING OR DUCTWORK ALLOWED ABOVE ANY ELECTRICAL/CONTROL PANELS.
4. COORDINATE NEW WORK WITH EXISTING CONDUITS, STRUCTURE, & PIPING. FIELD VERIFY EXISTING CONDITIONS PRIOR TO COMMENCING WORK. CONTRACTOR TO NOTIFY DESIGN TEAM WITH-OUT DELAY IF ACTUAL LOCATION OF EXISTING MECHANICAL EQUIPMENT DOES NOT MATCH FLOOR PLAN.
5. CONTRACTOR SHALL CLEAN & REFINISH ALL EXISTING DUCTWORK. PATCH & REPAIR OPENING AIR TIGHT OF EXISTING DUCTWORK AS REQUIRED (TYPICAL ALL). FIELD VERIFY AND COORDINATE ALL EXISTING HVAC SIZES, LOCATIONS, AND CONDITION PRIOR TO BID.
6. REUSE AND REWORK EXISTING HVAC DUCTWORK. PROVIDE NEW SECTION FOR RECONNECTION AS REQUIRED. FIELD VERIFY ALL REQUIREMENTS PRIOR TO BID.
7. CONTRACTOR SHALL BALANCE, INSPECT, REPAIR, OR REPLACE AS NECESSARY IF REQUIRED FOR EXISTING CEILING MOUNTED AIR DEVICES TO REMAIN. FIELD VERIFY AND COORDINATE EXACT SIZE, AIR QUANTITY, LOCATION, AND CONDITION PRIOR TO BID. AIR FLOW SHALL REMAIN AS IS UNLESS NOTED ON PLAN, OR DIRECTED BY CONSTRUCTION MANAGER. ANY DEFICIENCIES AND/OR DISCREPANCIES SHALL BE REPORTED TO ARCHITECT/ENGINEER IMMEDIATELY. COORDINATE AIR BALANCE RESULTS WITH CONSTRUCTION MANAGER.

NOTE:
ALL NEW HOODS SHALL BE RATED WITH ONE INCH THICK LAYER OF FACTORY INSTALLED INSULATION TO MEET "ZERO INCH CLEARANCE" TO COMBUSTIBLE MATERIALS. HOOD SHALL BE CERTIFIED BY ETL SPECIFICATIONS, AND SHALL CONFORM TO UL STANDARD 710, BUILT PER NFPA 96 SECTION 4.2.2, AND NSF LISTED.

NOTE: IF BALANCING DAMPERS ARE NOT EXISTING IN THE BRANCH DUCT OR AT THE TAKE-OFF, MECHANICAL CONTRACTOR SHALL SUPPLY AND INSTALL NEW BALANCING DAMPERS WITHIN THE BRANCH DUCT (TYPICAL).



MECHANICAL FLOOR PLAN
1/4" = 1'-0"

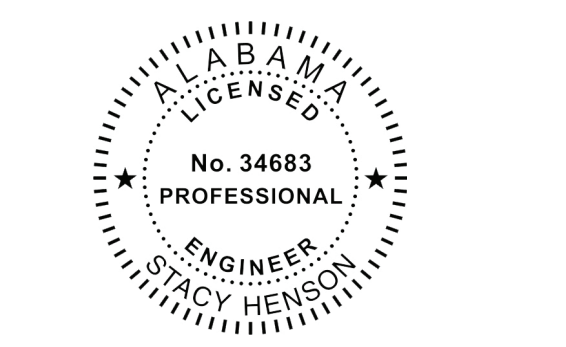


Chick-Fil-A
5200 Buffington Road
Atlanta, Georgia
30349-2998

INTERPLAN
INTERPLAN LLC
AR0011595
CA 8660

ARCHITECTURE ENGINEERING PERMITTING
220 E. CENTRAL PKWY, STE 4000
ALPHAMETTE SPRINGS, FL 32701
407.645.5008

SEAL:
Professional Engineer
No. 34683
FLORIDA
BRANCH OFFICE
TIGER TOWN
OPELIKA, AL



CHICK-FIL-A
TIGER TOWN
2052 Tiger Town Parkway
Opelika, AL
36801

FSU#01445

BUILDING TYPE / SIZE:	S03-C	
RELEASE:		
PRINTED FOR:	Construction	
REVISION SCHEDULE		
NO.	DATE	DESCRIPTION
06	08/28/2022	OWNER REVISION
08	10/20/2022	INTERNAL COORDINATION
11	11/17/2022	RCP UPDATES

CONSULTANT PROJECT #	2021.0087
DATE	11/20/21
DRAWN BY	AM
CHECKED BY	DAK
Information contained on this drawing and in all digital files produced for above named project may be reproduced in any manner without express written or verbal consent from the project manager.	
SHEET	MECHANICAL FLOOR PLAN
SHEET NUMBER	



Chick-fil-A
 5200 Buffington Road
 Atlanta, Georgia
 30349-2998

INTERPLAN
 INTERPLAN LLC
 ARO11595
 CA 8660

ARCHITECTURE
 ENGINEERING
 PERMITTING

220 E. CENTRAL PKY, STE 4000
 ALAMONTE SPRINGS, FL 32701
 407.645.5008

SEAL:

FOR
 INFORMATION
 ONLY

CHICK-FIL-A
TIGER TOWN
 2052 Tiger Town Parkway
 Opelika, AL
 36801

FSU#01445
 BUILDING TYPE / SIZE: S03-C

PRINTED FOR
Construction

REVISION SCHEDULE

NO.	DATE	DESCRIPTION	OWNER REVISION
05	09/28/2022		

CONSULTANT PROJECT # 2021.0087
 DATE 11/2021
 DRAWN BY AM
 CHECKED BY DAK

Information contained on this drawing and in all digital files produced by above named project may not be reproduced in any form without the express written or verbal consent from the project manager.

SHEET HOOD DETAILS

SHEET NUMBER

Copyright © 2022 INTERPLAN LLC. ALL RIGHTS RESERVED. REPRODUCTION OF ANY PART OF THIS DOCUMENT IS PROHIBITED.

MH1.1

MARIBR - 01/24/2023 12:38:10 PM

DATE: _____

APPROVED BY: _____

WITH NO CHANGES WITH CHANGES AS NOTED

APPROVED FOR FABRICATION

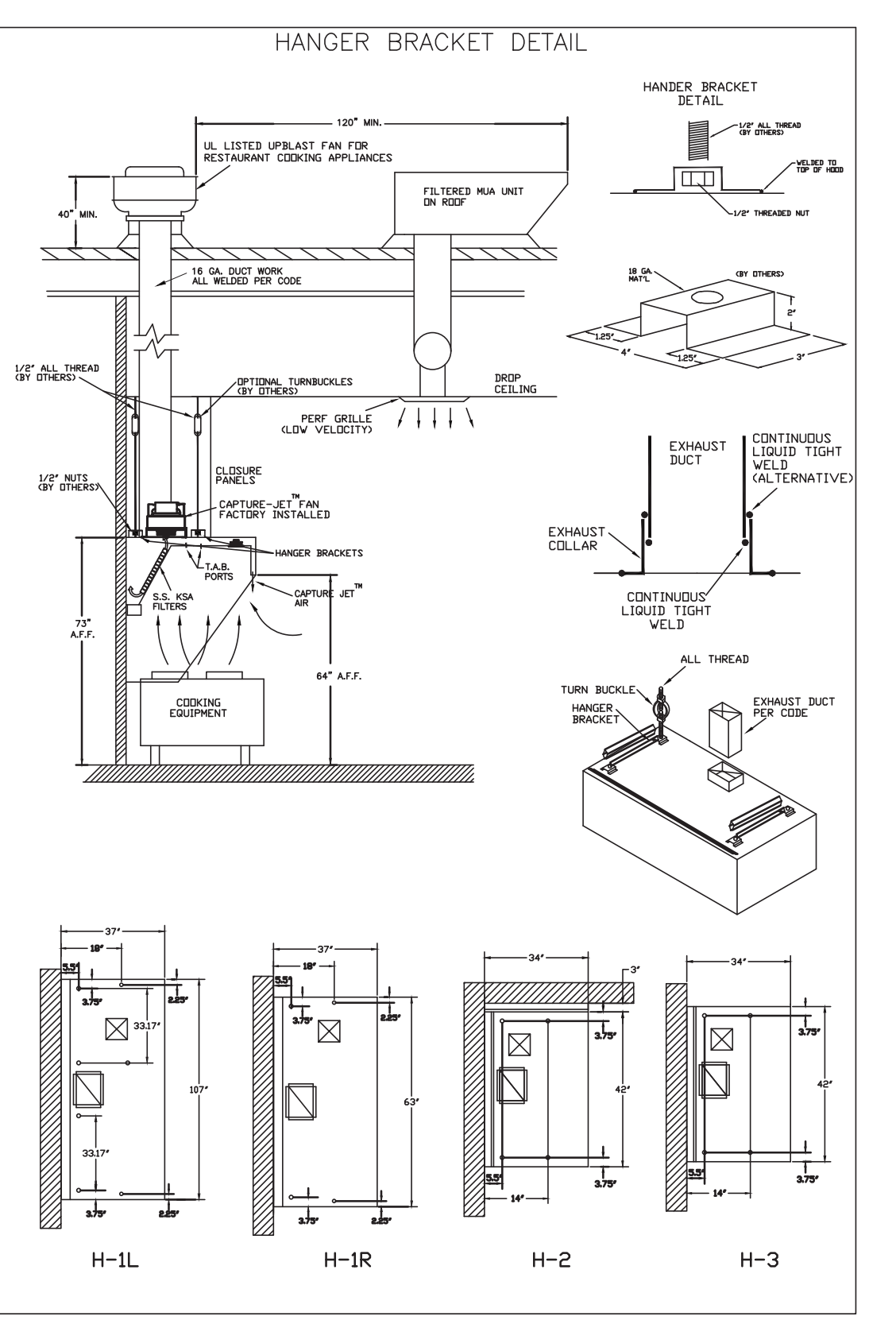
REUSE AND RESUBMIT

THIS DRAWING MUST BE CHECKED, SIGNED AND RETURNED TO THE APPROPRIATE FACTORY. PLEASE VERIFY THE FOLLOWING:

1. ALL DIMENSIONAL INFORMATION, MOUNTING POSITIONS
2. THE LOCATION AND TYPE OF COOKING EQUIPMENT

NOTE TO APPROVER: ANY CHANGES IN COOKING EQUIPMENT SUCH AS INCREASED ENERGY INPUTS OR EQUIPMENT POSITION MAY AFFECT EXHAUST AIRFLOW. HATCHING MUST BE NOTIFIED IF ANY OF THESE CHANGES OCCUR, A RECALCULATION THROUGH APPROVAL MAY BE REQUIRED.

UL NSF ETL



MODEL: KVL-C-1C

STANDARD FEATURES

- 3.5" FILTERS (KSA) 2
- CAPTURE-JET 1
- STAND-OFF 1
- L.E.D. LIGHTS 1

OPTIONS

- REMOTE SWITCH PANEL
- FIRE PROTECTION
- ETL LISTED V/VD EXHAUST DAMPER
- CEILING CLOSURE 2
- STD. BACKPLASH
- INSULATED BACKPLASH
- KBD DAMPER

MATERIAL

ALL 18 GA. S.S.

COMMENTS

CLOSURE HEIGHT = TBD (THREE SIDES)
 CEILING HEIGHT = ADVISE CEILING CLOSURE RECESSED 1" FROM FRONT TO CREATE SHELF

ETL LISTED ACCESS DOOR CENTERED AT CAPTURE-JET WITH FRONT C/J INTAKE

NOTCH RIGHT END PANEL DOUBLE RECEPTACLE PIN & SLEEVE

3" x 3" TRIM STRIP FOR STAND-OFF AIR RIGHT END

3" REAR STAND-OFF TO HAVE 1" THICK INSULATION

EQUIPMENT COVERED (2) FRYSERS

HOOD WEIGHT: 245 LBS

DATE	DWG. NO.	ITEM NO.	EXHAUST AIR INFORMATION
09.28.22	U22-764-01	H-3	CFM T.A.B. SP
			701 30' 39'

PROJECT: CHICK-FIL-A #1445 TIGER TOWN

LOCATION: OPELIKA, AL

CAPTURE AIR INFORMATION: CFM SP 30 .29'

SUBMITTED BY: HALTON CO. HSB

K FACTOR EQUATION: CFM = K FACTOR * JDP

K FACTOR = 1291

MODEL: KVL-2-1C

STANDARD FEATURES

- 3.5" FILTERS (KSA) 3
- 1/2" S.S. FILTERS (KSA) 5
- CAPTURE-JET 1
- STAND-OFF 1
- L.E.D. LIGHTS 2

OPTIONS

- REMOTE SWITCH PANEL
- FIRE PROTECTION
- ETL LISTED V/VD EXHAUST DAMPER
- CEILING CLOSURE 2
- STD. BACKPLASH
- INSULATED BACKPLASH
- KBD DAMPER

MATERIAL

ALL 18 GA. S.S.

COMMENTS

CLOSURE HEIGHT = TBD (TWO SIDES)
 CEILING HEIGHT = ADVISE CEILING CLOSURE RECESSED 1" FROM FRONT TO CREATE SHELF

36" x 24" ACCESS DOOR RIGHT SIDE FOR ACCESS TO CAPTURE-JET WITH FRONT C/J INTAKE & HBD

CONTINUOUS CAPTURE INTERNAL LEFT END OUTLET

3" REAR STAND-OFF TO HAVE 1" THICK INSULATION

EQUIPMENT COVERED (3) PRESSURE FRYSERS

HOOD WEIGHT: 284 LBS

DATE	DWG. NO.	ITEM NO.	EXHAUST AIR INFORMATION
09.28.22	U22-764-01	H-1R	CFM T.A.B. SP
			709 13' 23'

PROJECT: CHICK-FIL-A #1445 TIGER TOWN

LOCATION: OPELIKA, AL

CAPTURE AIR INFORMATION: CFM SP 47 .30'

SUBMITTED BY: HALTON CO. HSB

K FACTOR EQUATION: CFM = K FACTOR * JDP

K FACTOR = 1959

MODEL: KVL-2-1C

STANDARD FEATURES

- 3.5" FILTERS (KSA) 5
- 1/2" S.S. FILTERS (KSA) 5
- CAPTURE-JET 1
- STAND-OFF 1
- L.E.D. LIGHTS 3

OPTIONS

- REMOTE SWITCH PANEL
- FIRE PROTECTION
- ETL LISTED V/VD EXHAUST DAMPER
- CEILING CLOSURE 2
- STD. BACKPLASH
- INSULATED BACKPLASH
- KBD DAMPER

MATERIAL

ALL 18 GA. S.S.

COMMENTS

CLOSURE HEIGHT = TBD (TWO SIDES)
 CEILING HEIGHT = ADVISE CEILING CLOSURE RECESSED 1" FROM FRONT TO CREATE SHELF

46" x 24" LIFT OUT DOOR LEFT SIDE (ACCESS TO FIRE SUPPRESSION PANEL)

46" x 24" LIFT OUT DOOR RIGHT SIDE AT CAPTURE-JET WITH FRONT C/J INTAKE

CONTINUOUS CAPTURE INTERNAL RIGHT END OUTLET

3" REAR STAND-OFF TO HAVE 1" THICK INSULATION

NOTCH LEFT END PANEL

EQUIPMENT COVERED (4) PRESSURE FRYSERS (2) WELLS

ANGUL. WEIGHT = 63 LBS
 HOOD WEIGHT = 669 LBS

DATE	DWG. NO.	ITEM NO.	EXHAUST AIR INFORMATION
09.28.22	U22-764-01	H-1L	CFM T.A.B. SP
			1204 13' 22'

PROJECT: CHICK-FIL-A #1445 TIGER TOWN

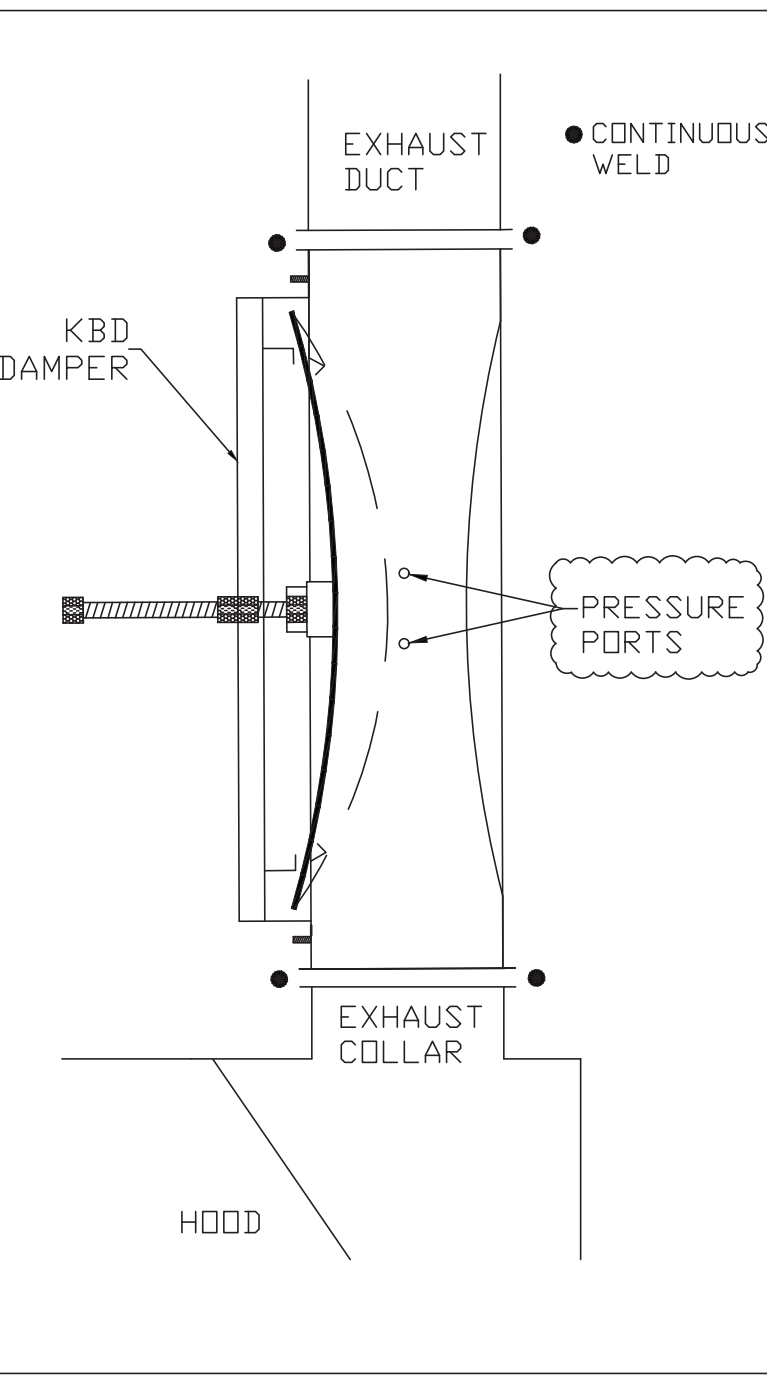
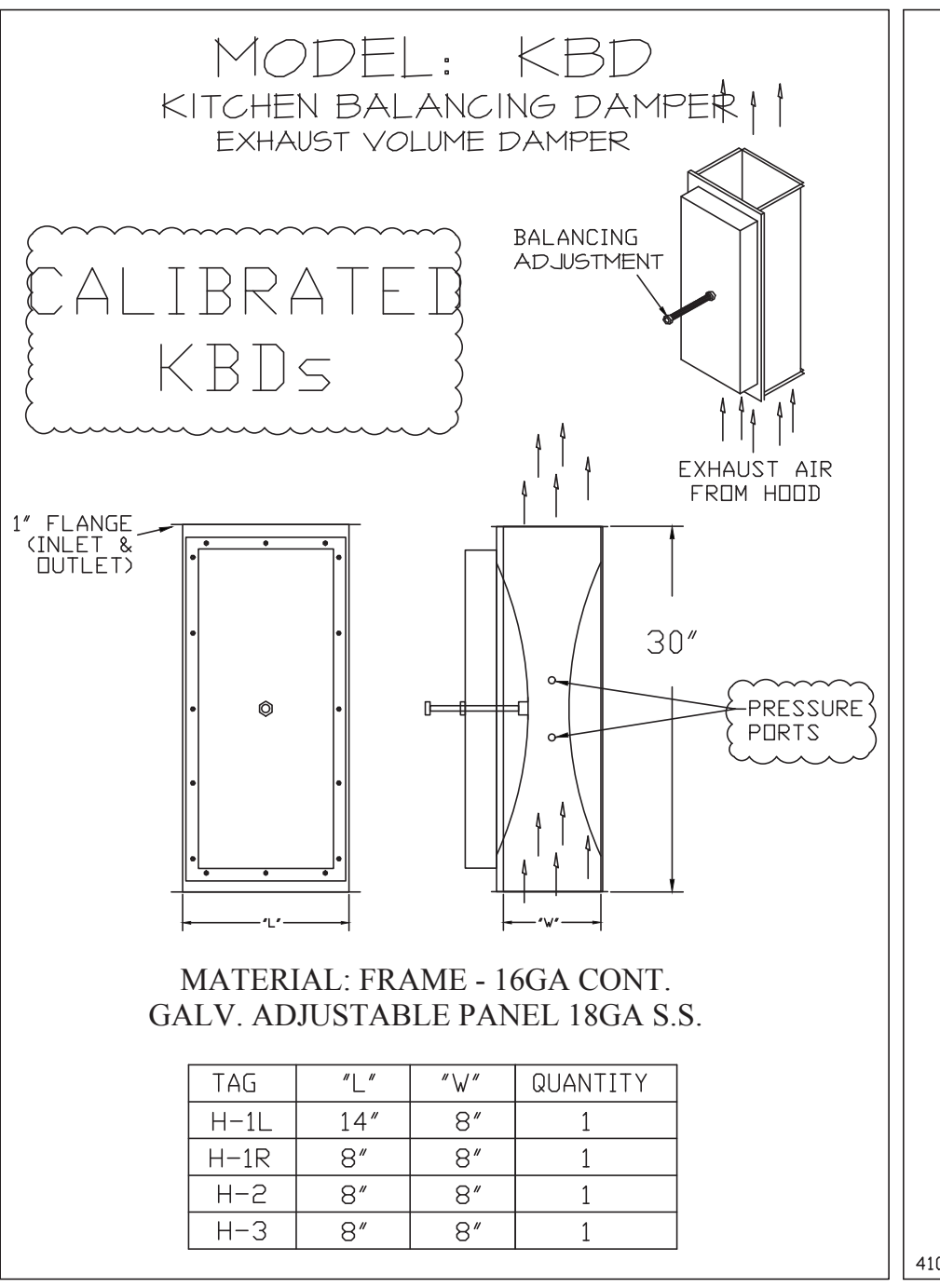
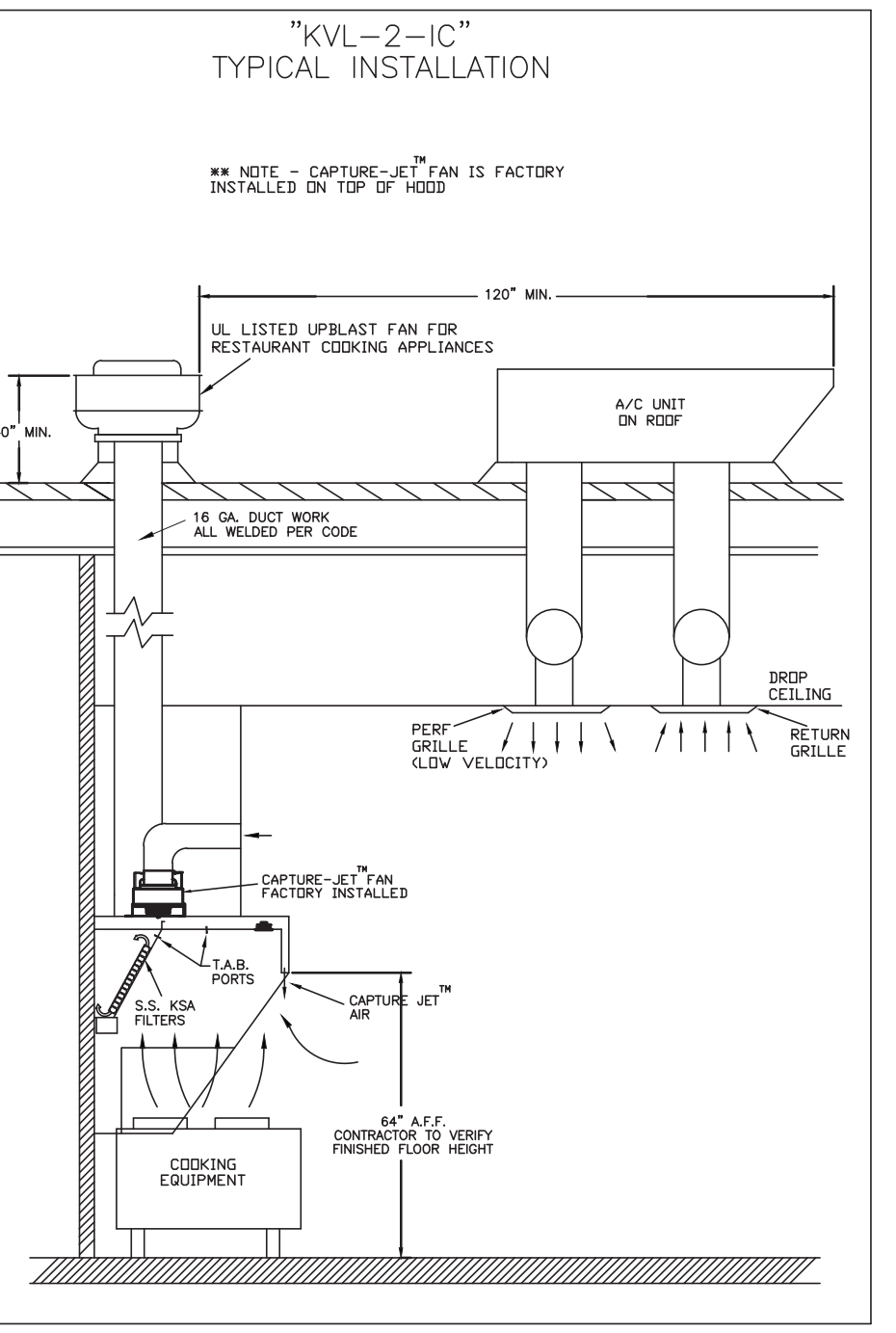
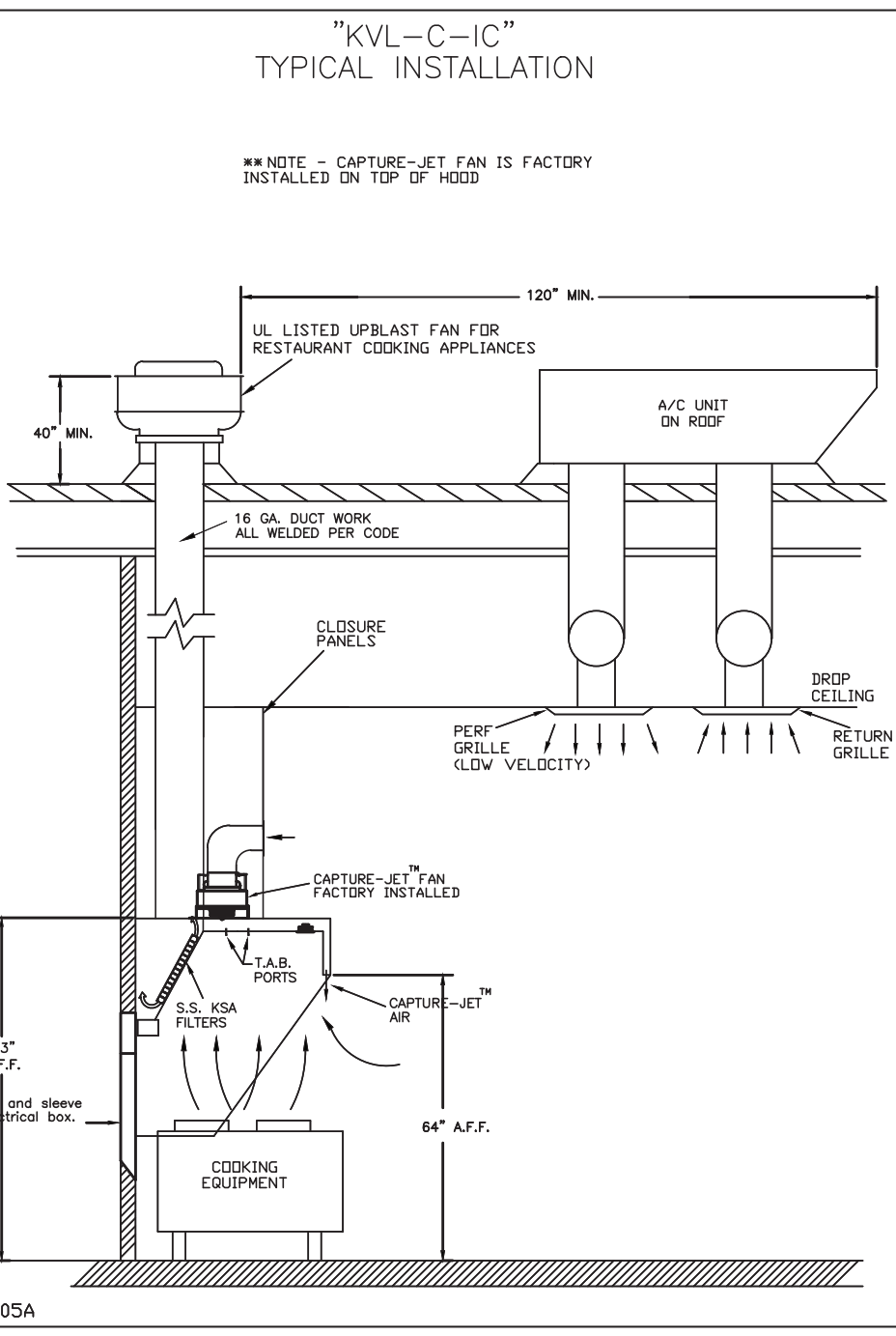
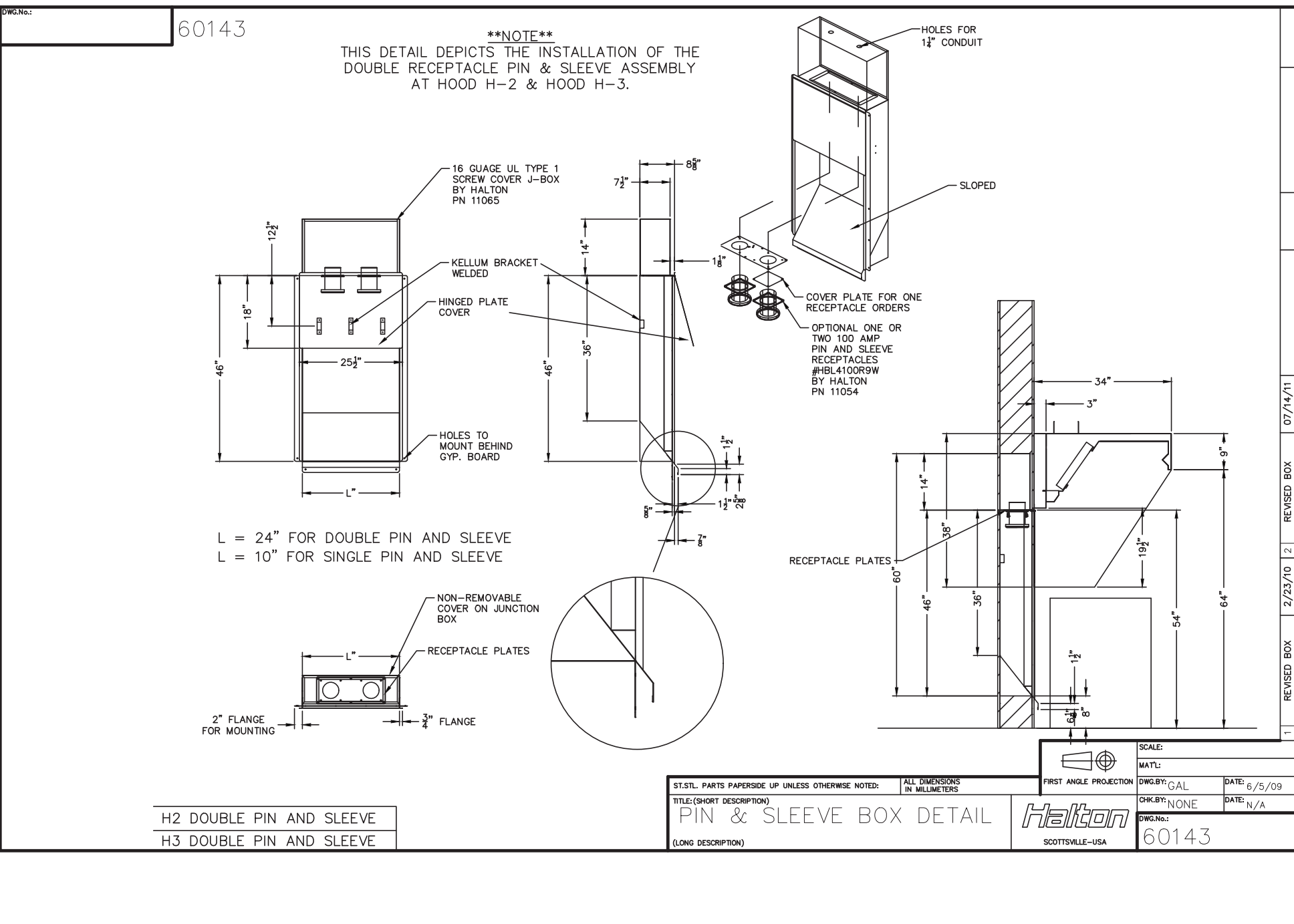
LOCATION: OPELIKA, AL

CAPTURE AIR INFORMATION: CFM SP 80 .30'

SUBMITTED BY: HALTON CO. HSB

K FACTOR EQUATION: CFM = K FACTOR * JDP

K FACTOR = 3365



HALTON HOODS
 - ETL LISTED PER LATEST 710 STANDARD
 - BUILT PER NFPA 96
 - NSF LISTED

NSF Halton CONFORMS TO UL STD. UL 514, UL 710, UL 719, UL 720, UL 721, UL 722, UL 723, UL 724, UL 725, UL 726, UL 727, UL 728, UL 729, UL 730, UL 731, UL 732, UL 733, UL 734, UL 735, UL 736, UL 737, UL 738, UL 739, UL 740, UL 741, UL 742, UL 743, UL 744, UL 745, UL 746, UL 747, UL 748, UL 749, UL 750, UL 751, UL 752, UL 753, UL 754, UL 755, UL 756, UL 757, UL 758, UL 759, UL 760, UL 761, UL 762, UL 763, UL 764, UL 765, UL 766, UL 767, UL 768, UL 769, UL 770, UL 771, UL 772, UL 773, UL 774, UL 775, UL 776, UL 777, UL 778, UL 779, UL 780, UL 781, UL 782, UL 783, UL 784, UL 785, UL 786, UL 787, UL 788, UL 789, UL 790, UL 791, UL 792, UL 793, UL 794, UL 795, UL 796, UL 797, UL 798, UL 799, UL 800, UL 801, UL 802, UL 803, UL 804, UL 805, UL 806, UL 807, UL 808, UL 809, UL 810, UL 811, UL 812, UL 813, UL 814, UL 815, UL 816, UL 817, UL 818, UL 819, UL 820, UL 821, UL 822, UL 823, UL 824, UL 825, UL 826, UL 827, UL 828, UL 829, UL 830, UL 831, UL 832, UL 833, UL 834, UL 835, UL 836, UL 837, UL 838, UL 839, UL 840, UL 841, UL 842, UL 843, UL 844, UL 845, UL 846, UL 847, UL 848, UL 849, UL 850, UL 851, UL 852, UL 853, UL 854, UL 855, UL 856, UL 857, UL 858, UL 859, UL 860, UL 861, UL 862, UL 863, UL 864, UL 865, UL 866, UL 867, UL 868, UL 869, UL 870, UL 871, UL 872, UL 873, UL 874, UL 875, UL 876, UL 877, UL 878, UL 879, UL 880, UL 881, UL 882, UL 883, UL 884, UL 885, UL 886, UL 887, UL 888, UL 889, UL 890, UL 891, UL 892, UL 893, UL 894, UL 895, UL 896, UL 897, UL 898, UL 899, UL 900, UL 901, UL 902, UL 903, UL 904, UL 905, UL 906, UL 907, UL 908, UL 909, UL 910, UL 911, UL 912, UL 913, UL 914, UL 915, UL 916, UL 917, UL 918, UL 919, UL 920, UL 921, UL 922, UL 923, UL 924, UL 925, UL 926, UL 927, UL 928, UL 929, UL 930, UL 931, UL 932, UL 933, UL 934, UL 935, UL 936, UL 937, UL 938, UL 939, UL 940, UL 941, UL 942, UL 943, UL 944, UL 945, UL 946, UL 947, UL 948, UL 949, UL 950, UL 951, UL 952, UL 953, UL 954, UL 955, UL 956, UL 957, UL 958, UL 959, UL 960, UL 961, UL 962, UL 963, UL 964, UL 965, UL 966, UL 967, UL 968, UL 969, UL 970, UL 971, UL 972, UL 973, UL 974, UL 975, UL 976, UL 977, UL 978, UL 979, UL 980, UL 981, UL 982, UL 983, UL 984, UL 985, UL 986, UL 987, UL 988, UL 989, UL 990, UL 991, UL 992, UL 993, UL 994, UL 995, UL 996, UL 997, UL 998, UL 999, UL 1000

HALTON COMPANY, 101 INDUSTRIAL DR., SCOTTSVILLE, KY 42664

MODEL NO. SERIAL NO. ITEM NO.

KVL-C-1C

GENERAL REQUIREMENTS

FILTER TYPE EXHAUST HOODS FOR COMMERCIAL AND INSTITUTIONAL KITCHENS

THE FAN CIRCUIT IS RATED FOR 120V, 60 HZ.

THE LIGHTING CIRCUIT IS RATED FOR 120V, 60 HZ.

THE HOOD HAS BEEN CERTIFIED BY ETL FOR 6 INCH CLEARANCE TO COMBUSTIBLE MATERIALS (TOP, SIDES, FRONT AND REAR) IN COMPLIANCE WITH UL710 WITH CONSIDERATION TO NFPA 96.

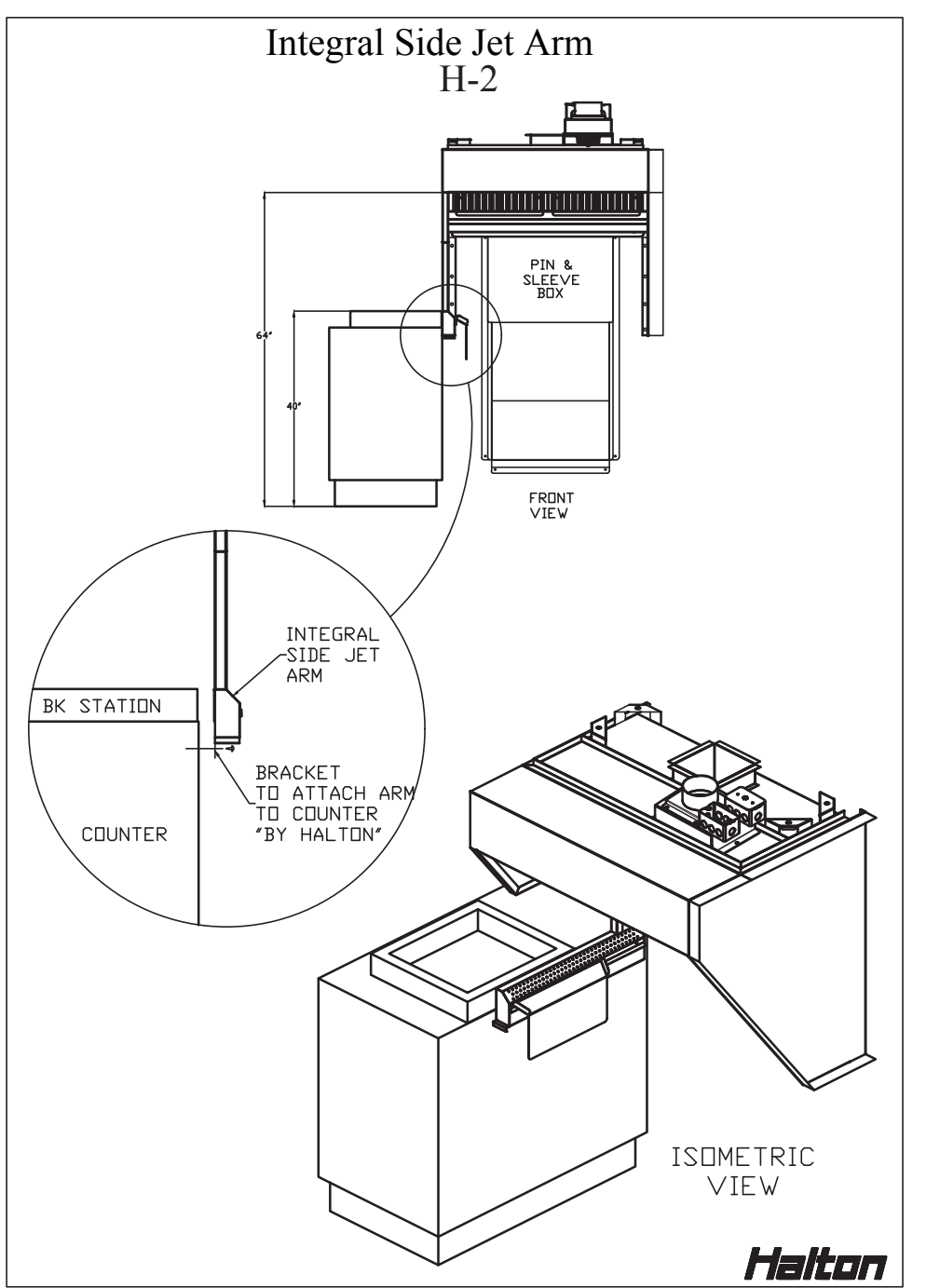
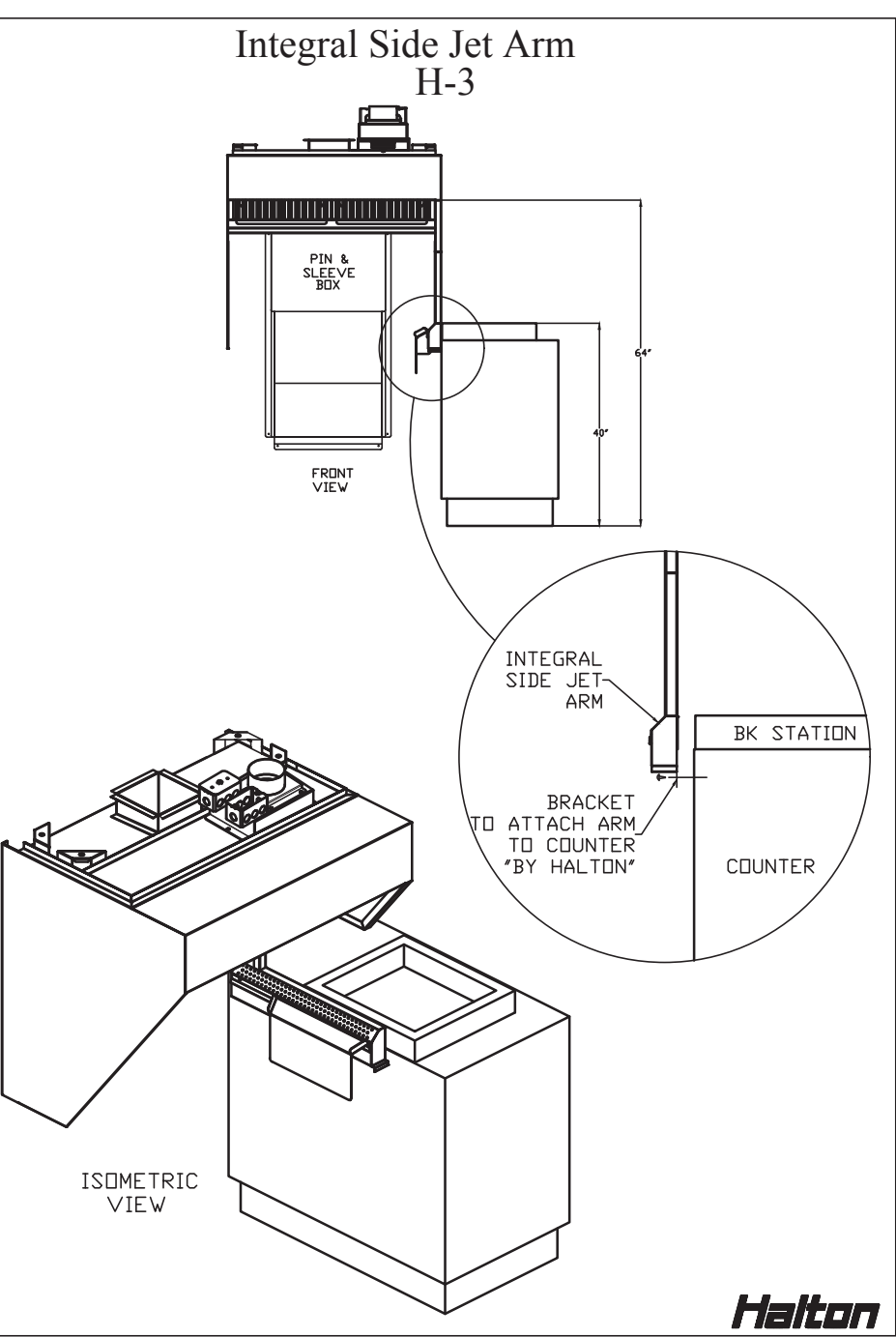
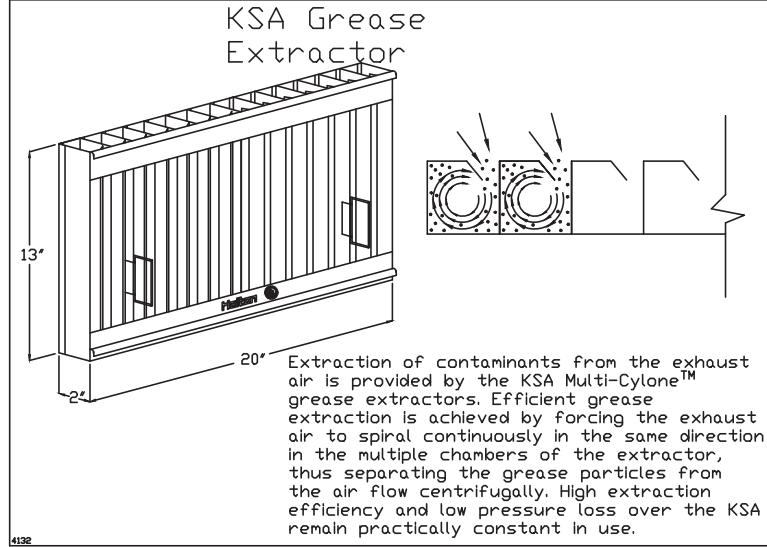
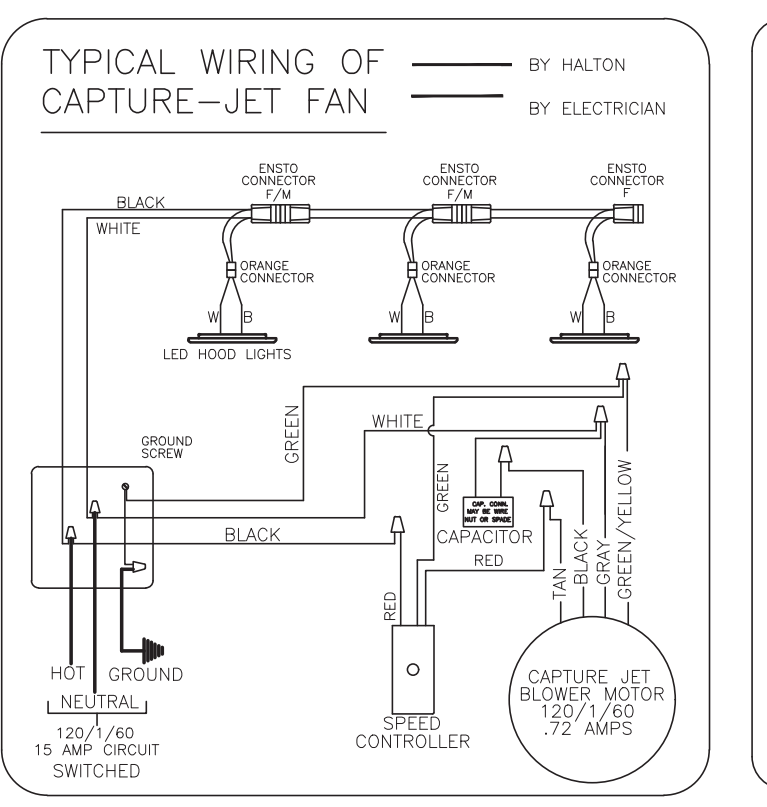
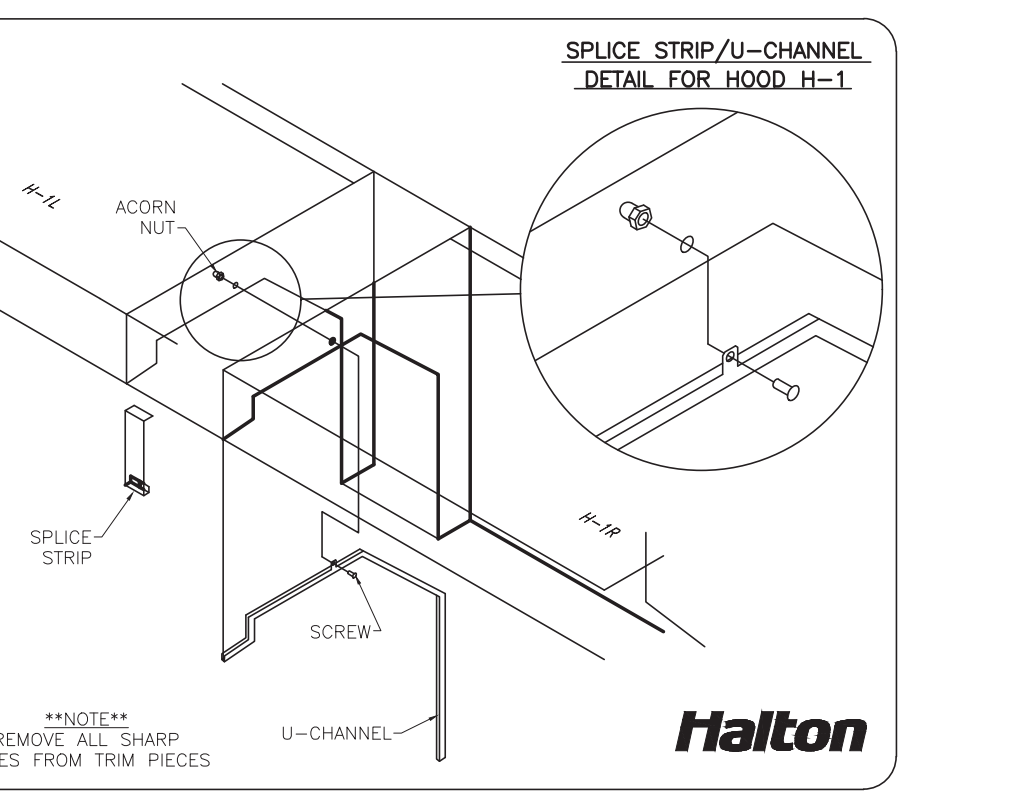
THE HOOD IS PROVIDED WITH REPLACEABLE KSA FILTERS AND LIGHTING FEATURES.

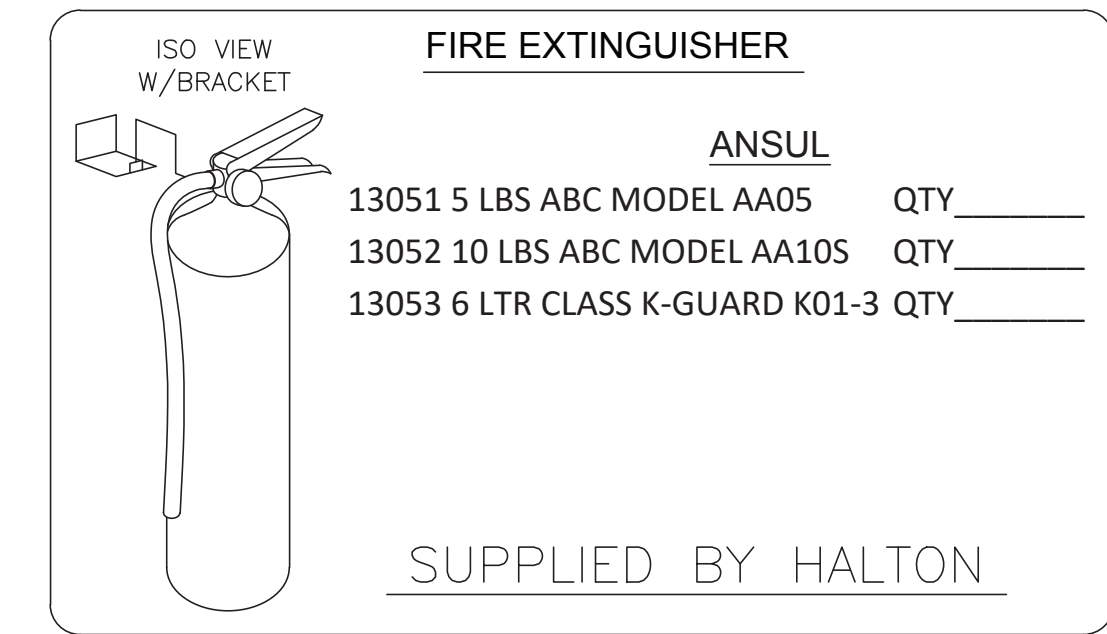
REPLACE FILTERS ONLY WITH UL CLASSIFIED FILTER TYPE OF THE SAME HOOD, AND MANUFACTURE.

SUITABLE FOR USE TO HEAVY DUTY COOKING APPLIANCES.

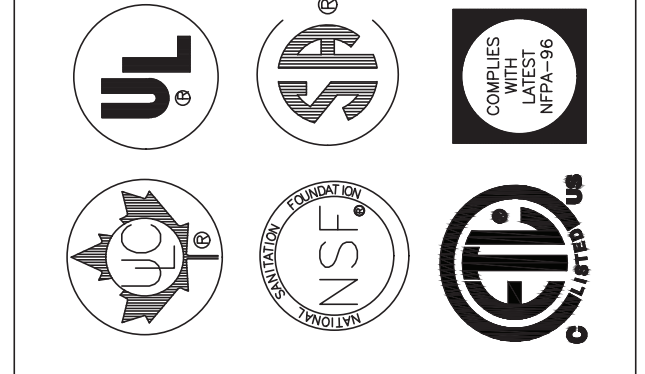
BUTY LEVEL	MINIMUM OVERHANG	MINIMUM CLEARANCE	MIN. COMPACT HOOD HEIGHT
MEDIUM	6"	0"	36"
MEDIUM	6"	0"	36"
MEDIUM	6"	0"	36"
HEAVY	0"	0"	25"
HEAVY	0"	0"	25"
HEAVY	0"	0"	25"

LET SUPPLY AIR FLOW SHALL ONLY BE SET AT 520 IN HOOD





THIS DRAWING MUST BE CHECKED, SIGNED AND RETURNED TO THE APPROPRIATE FACTORY. PLEASE VERIFY THE FOLLOWING:
 1. ALL DIMENSIONAL INFORMATION, MOUNTING POSITIONS AND CLEARANCES.
 2. THE LOCATION AND TYPE OF COOKING EQUIPMENT.
NOTE TO APPROVER: COOKING EQUIPMENT SUCH AS INCREASED ENERGY INDICES OR EQUIPMENT POSITION MAY AFFECT EXHAUST AIRFLOW. HALTON MUST BE NOTIFIED IF ANY OF THESE CHANGES OCCUR, A RECALCULATION EXHAUST AIRFLOW MAY BE REQUIRED.
 REVISE AND RESUBMIT
 APPROVED FOR FABRICATION
 WITH NO CHANGES
 WITH CHANGES AS NOTED
 APPROVED BY: _____ DATE: _____



FUSIBLE LINK RATINGS

ITEM	TEMP
OPEN FRYERS	450°
2 BURNER / FLAT TOP	450°
PRESSURE FRYERS	450°
GRILL	450°
EXHAUST COLLARS	450°

ANSUL R-102 FIRE SYSTEM NOTES
 THREE TANK SYSTEM MOUNTED ON TOP OF (H-1L)
 MAXIMUM FLOW POINTS = 33

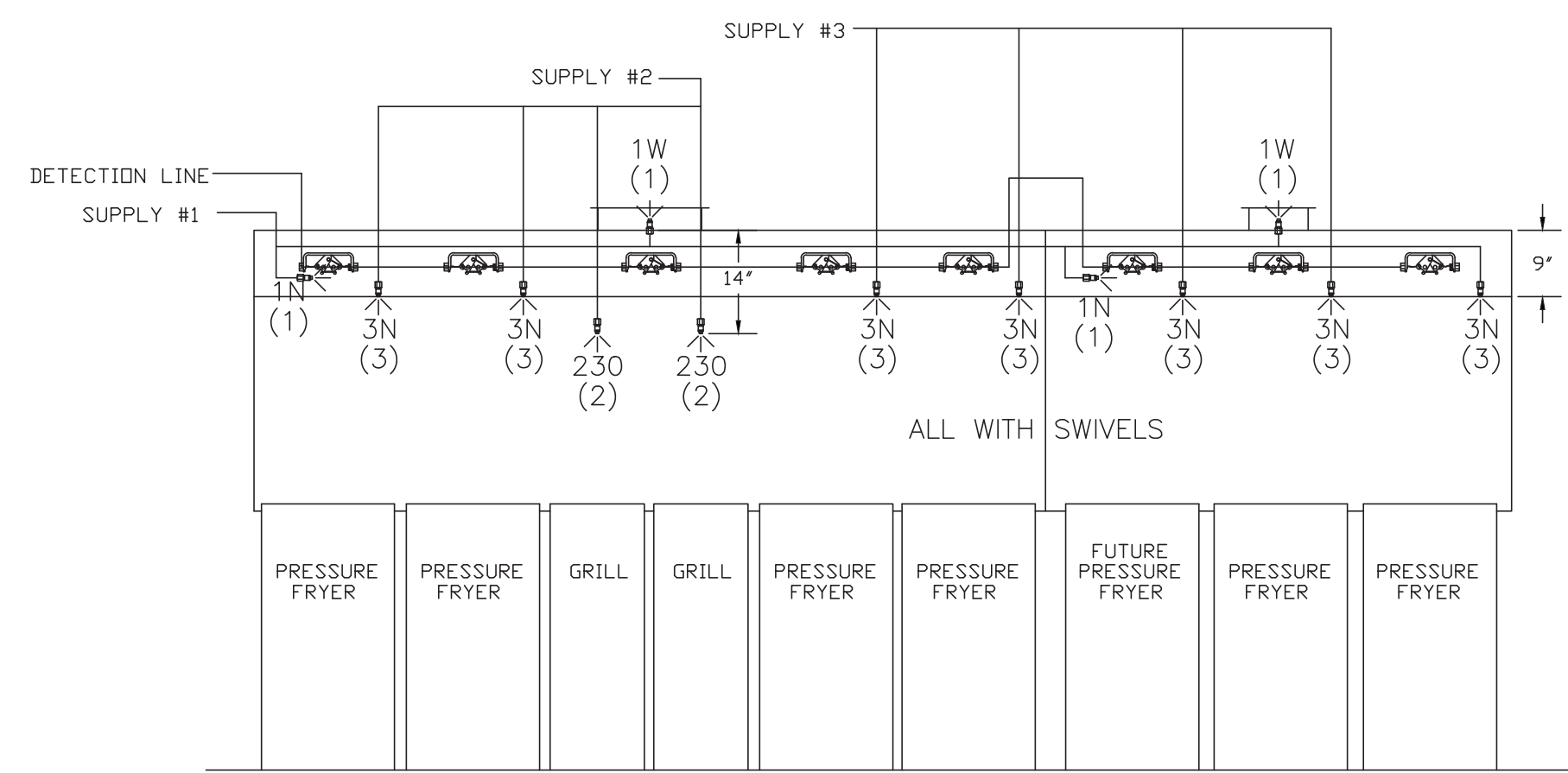
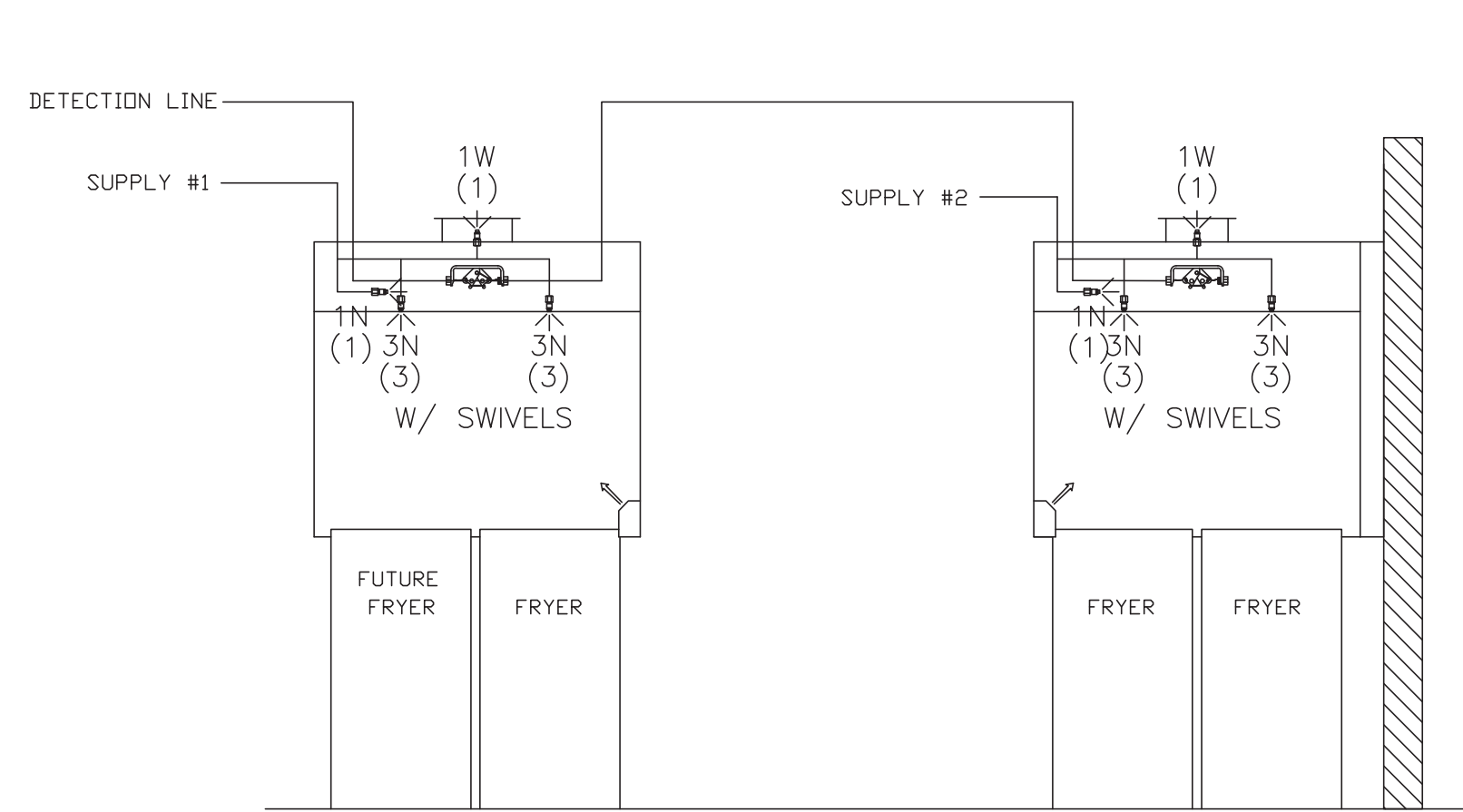
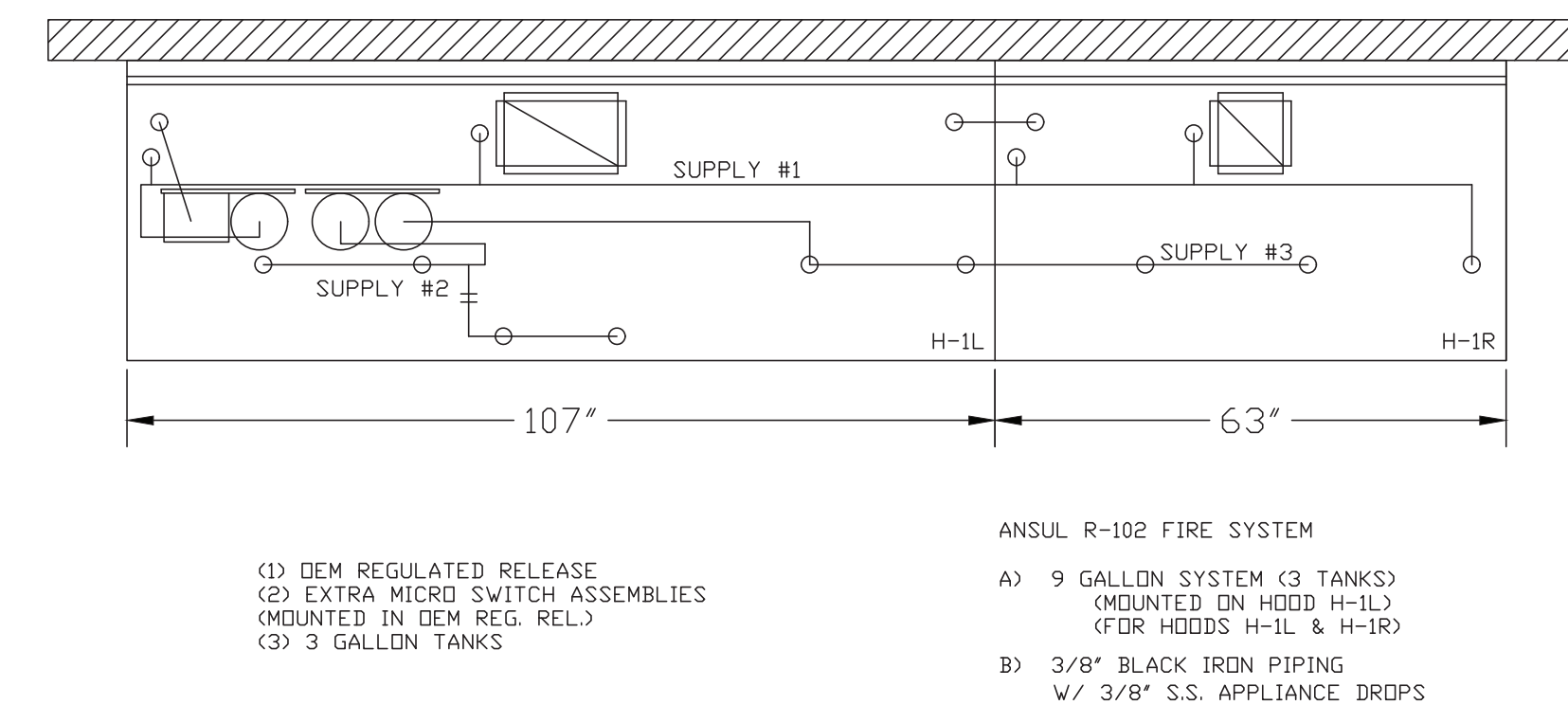
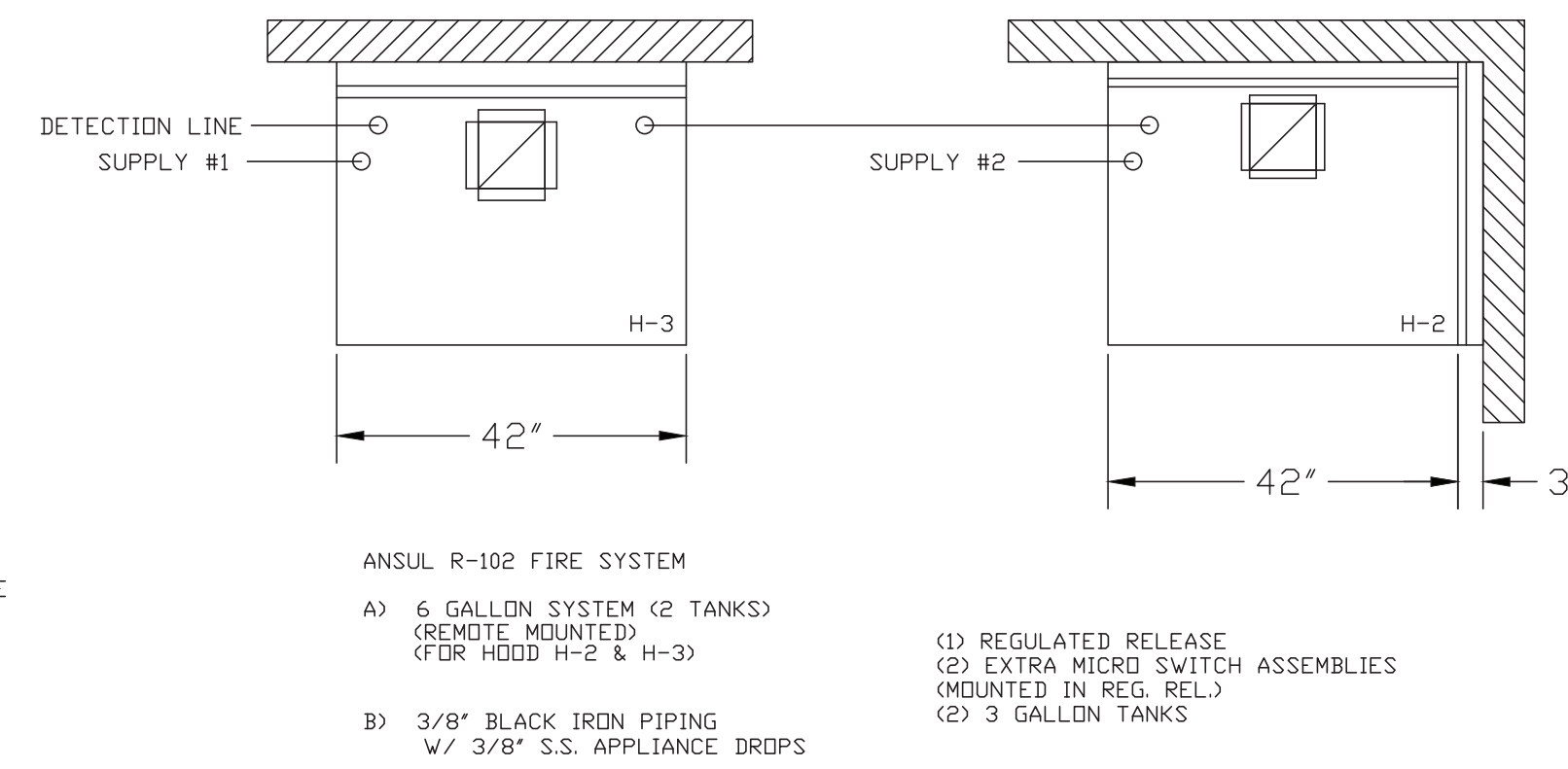
ANSUL R-102 FIRE SYSTEM NOTES
 TWO TANK SYSTEM REMOTE MOUNTED
 MAXIMUM FLOW POINTS = 22

ITEM	QTY	DESCRIPTION	FLOW PTS (TOTAL)
1W	4	DUCT NOZZLES	4
1N	4	PLENUM NOZZLES	4
230	2	APPLIANCE NOZZLES	4
3N	11	APPLIANCE NOZZLES	33
TOTAL FLOW POINTS			45

ITEM	QTY	DESCRIPTION
#200	8	SERIES DETECTORS W/ FUSIBLE LINKS
#201	2	TERMINAL DETECTORS W/ FUSIBLE LINKS
#202	1	DEM REGULATED RELEASE W/ DOUBLE POLE MICRO SWITCH
#202	1	REGULATED RELEASE W/ DOUBLE POLE MICRO SWITCH
#203	5	3 GALLON TANKS
#204	1	SINGLE TANK ENCLOSURE
#205	2	REMOTE PULL STATION

ANSUL R-102 FIRE SYSTEM
 UL LISTED PER STD LATEST STD 300
 1. FINAL INSTALLATION IS TO BE MADE IN ACCORDANCE WITH ALL APPLICABLE CODES
 2. ALL ELECTRICAL COMPONENTS FOR EQUIPMENT SHUT DOWN TO BE PROVIDED BY THE ELECTRICIAN. MICRO-SWITCH INSTALLED IN REGULATED RELEASE BY ANSUL INSTALLER
 3. REMOTE PULL STATION LOCATED PER MECHANICAL DRAWINGS

****PROTECTS HOODS H-2 & H-3****
 REMOTE MOUNTED:
 (1) REGULATED RELEASE (WITH ONE TANK)
 (1) SINGLE TANK ENCLOSURE (WITH ONE TANK)



ANSUL R-102 FIRE SYSTEM LAYOUT

MAIL APPROVED DRAWINGS TO APPROPRIATE FACTORY BELOW:

HALTON CO. (USA)	DATE: _____
101 INDUSTRIAL DRIVE	BY: _____
SCOTTSDALE, KY 42164	REVISION DESCRIPTION
1-270-237-5600	
WEBSITE: www.halton.com	
HALTON CO. (CANADA)	
1021 BREVIK PLACE	
MISSISSAUGA, ON L4W 3R7	
1-905-624-0301	

PROJECT: CHICK-FIL-A #11445
 TIGER TOWN

LOCATION: OPELIKA, AL
 DRAWN BY: SKM
 SCALE: NOT TO SCALE
 DATE: 09.28.22

Halton

DRAWING No.: U22-764-01
 SHEET NO.: H-1.2



INTERPLAN
 INTERPLAN LLC
 AR0011595
 CA 8660
 ARCHITECTURE
 ENGINEERING
 PERMITTING
 220 E. CENTRAL PKWY., STE 4000
 ALTAMONTE SPRINGS, FL 32701
 407.645.5008

SEAL:
 FOR INFORMATION ONLY

CHICK-FIL-A
TIGER TOWN
 2052 Tiger Town Parkway
 Opelika, AL
 36801

FSU#01445
 BUILDING TYPE / SIZE: S03-C

REVISION SCHEDULE

NO.	DATE	DESCRIPTION
05	09/28/2022	OWNER REVISION

CONSULTANT PROJECT # 2021.0087
 DATE 11/2021
 DRAWN BY AM
 CHECKED BY DAK