

HOOD INFORMATION																
HOOD NO.	MARK	MODEL	HOOD DIMENSIONS (IN.)			HOOD CONSTR.	COOKING LOAD / DUTY RATING	EXHAUST					SUPPLY		TOTAL WEIGHT LBS.	SECTION LOCATION
			LENGTH	WIDTH	HEIGHT			TOTAL CFM	COLLAR(S)			MUA CFM	AC CFM			
			TOP 23	FRT 12	430 SS WHERE EXPOSED			WIDTH	LENGTH	DIA.	CFM	S.P.				
1	GRIDDLE HOOD	XGEP-64-S	64	BOT 8	BACK 36	MEDIUM	1500	12	12		1500	1.918			137	SINGLE

FIRE SYSTEM INFORMATION									
MARK	MODEL	LOCATION	FLOW POINTS		SUPPLY LINE	DETECTION	MARK(S) PROTECTED BY FIRE SYSTEM		
			HOODS	PCU					
FIRE SUPPRESSION-GRIDDLE HOOD	ANSUL R-102 WET CHEMICAL	REMOTE MOUNTED	6 UTILIZED		CONTINUOUS	FUSIBLE LINK	GRIDDLE HOOD SECTION 1		

HOOD INFORMATION													
HOOD NO.	MARK	LIGHTING DETAILS			GREASE FILTRATION DETAILS				UTILITY CABINET(S)				
		FIXTURE TYPE	BULB / LAMP INFO	QTY	FOOT CANDLES	TYPE / MODEL MATERIAL	QTY	SIZE (IN.)	LOCATION	FIRE SYSTEM	CONTROLS		
							L	H		TYPE	SIZE	MODEL	INTERFACE
1	GRIDDLE HOOD					GREASE GRABBER STAINLESS STEEL	4	16	16				

FIRE SYSTEM OPTIONS AND ACCESSORIES
 FULL INSTALLATION (INCLUDES PRE-PIPED HOOD(S) WITH DETECTION AND FACTORY COORDINATED INSTALL)
 CHROME SLEEVES FOR FACTORY PROVIDED APPLIANCES DROPS - INCLUDED
 METAL BLOW-OFF CAPS - INCLUDED
 HOOD SUPPRESSION TANK - INCLUDED - 3 GAL. - [(1) 3.0 TANK(S)]
 REMOTE PULL STATION - STANDARD - FIELD INSTALLATION AT SINGLE POINT OF EGRESS

HOOD OPTIONS						SPECIAL DESIGN REQUESTS					
UL 710 LISTED W/ OUT EXHAUST FIRE DAMPER - UL #R25625 BACK NON-INTEGRAL AIR SPACE - 3 IN WIDE 26 IN HIGH CEILING ENCLOSURES - FRONT LEFT RIGHT - FIELD INSTALLED FACTORY MOUNTED EXHAUST COLLAR(S) PERFORMANCE ENHANCING LIP (PEL) TECHNOLOGY STANDING SEAM CONSTRUCTION FOR SUPERIOR STRENGTH						SDR #K1100145 - FLUE BYPASS HOOD SDR #K1800144 - CULVERS 4VAT 2FIRE PROCESS - GRIDDLE HOOD					

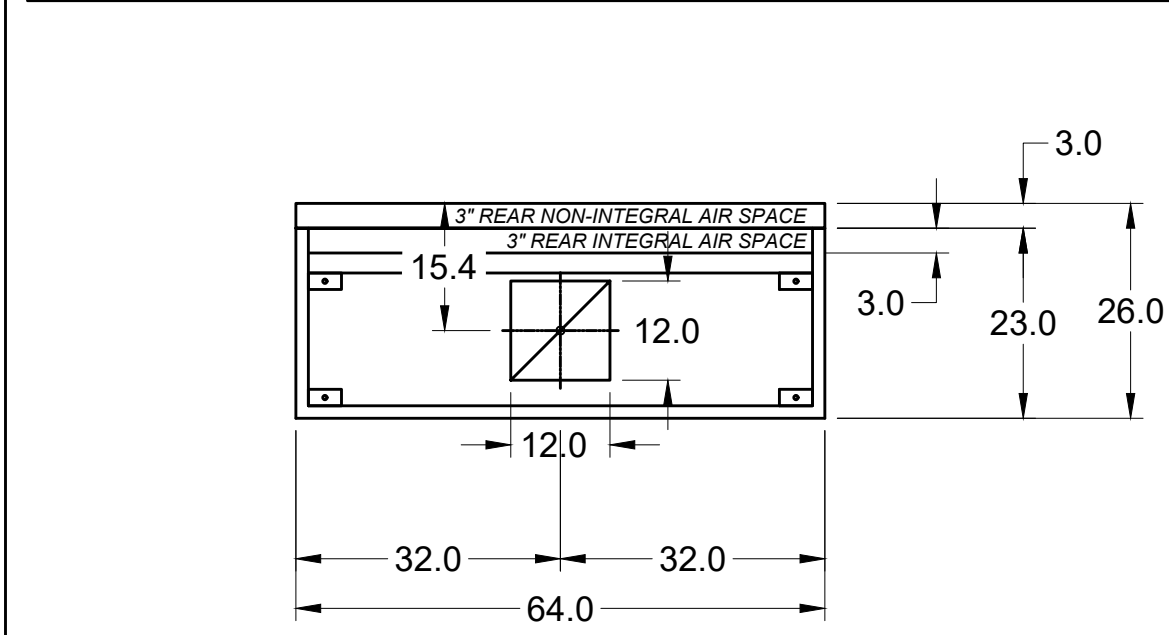
SPECIAL DESIGN REQUESTS
 SDR #K1800144 - CULVERS 4VAT 2FIRE PROCESS - GRIDDLE HOOD

Direct Drive Upblast Centrifugal Roof Exhaust Fan													
MARK INFORMATION			FAN INFORMATION					MOTOR INFORMATION					
QTY	MARK	MODEL	VOLUME (CFM)	TOTAL EXTERNAL SP (IN WG)	FAN RPM	OPERATING POWER (HP)	WEIGHT (LB.)	SIZE (HP)	V/C/P	ENCLOSURE	MOTOR RPM	WINDINGS	NEC FLA*
1	PRV-2 Griddle Fan	XCUE-140-VG	1,500	1.801	1,725	0.83	92	1	115/60/1	OP	1725	1	16

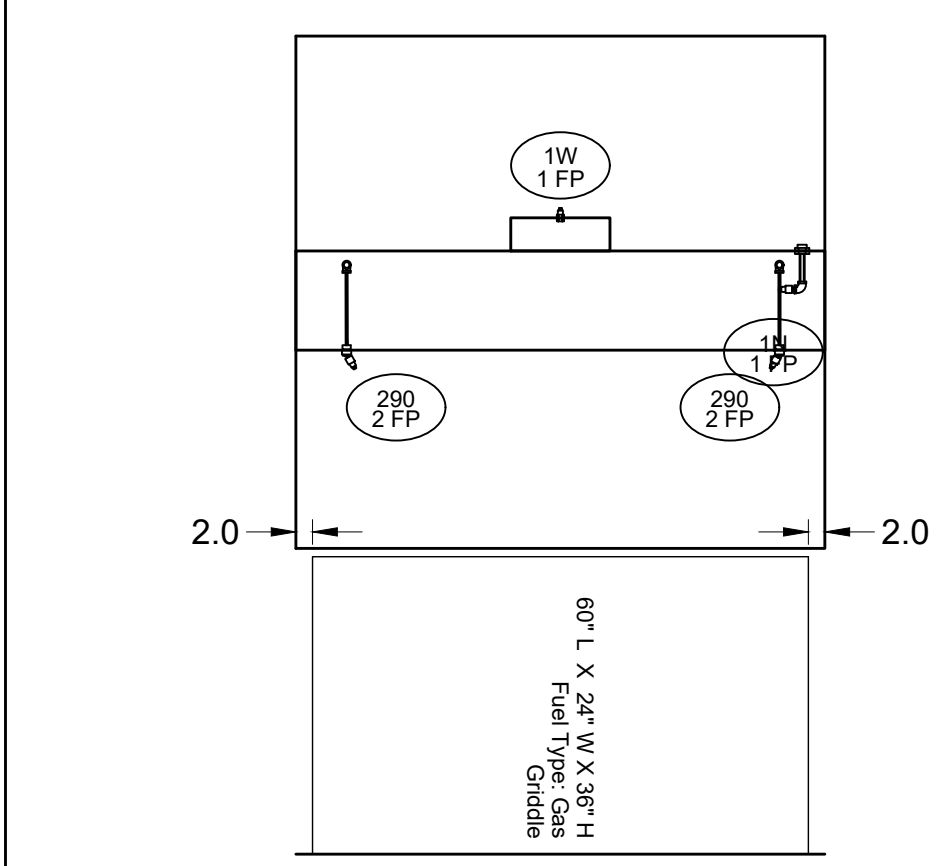
*NEC FLA - Based on table 430.250 or 430.248 of National Electrical Code 2020. Actual motor FLA may vary for sizing thermal overload, consult factory"

PRV-2 Griddle Fan : SELECTED OPTIONS AND ACCESSORIES

- One piece fully welded windband
- Tapered bushing wheel hub
- Breather tube outlet area min. 4.4 sq. in. (sizes 99-480), 2.0 sq. in. (sizes 60-95)
- Min. windband material thickness: 0.051" aluminum (060-240), 0.064" aluminum (240HP, 240XP), 0.080" aluminum (sizes 300-480)
- Larger Curb Cap Size - 26 Square
- UL/cUL 705 Listed - Supplement SC - "Power Ventilators for Restaurant Exh. Appliances" (Formerly UL 762)
- Switch, NEMA-3R, Toggle, Hinge, Factory Installed
- High Temp Curb Seal Rated for Continuous Duty at 1500 F (Factory Attached)
- Grease Trap (PN 475538)
- Clean-out Port - Factory Installed
- Conduit Chase Qty 1

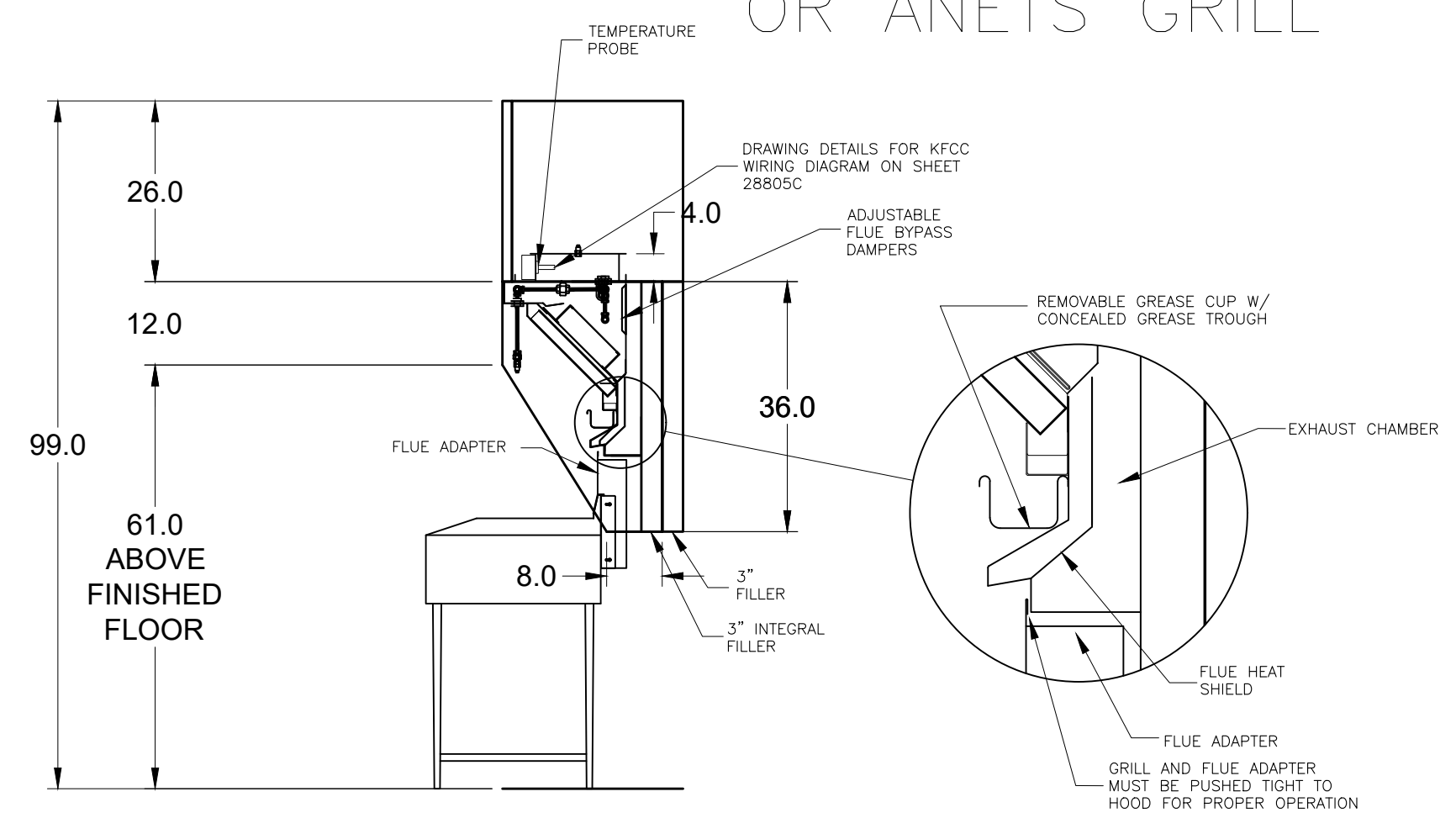


MARK: Griddle Hood - SECTION 1 PLAN VIEW

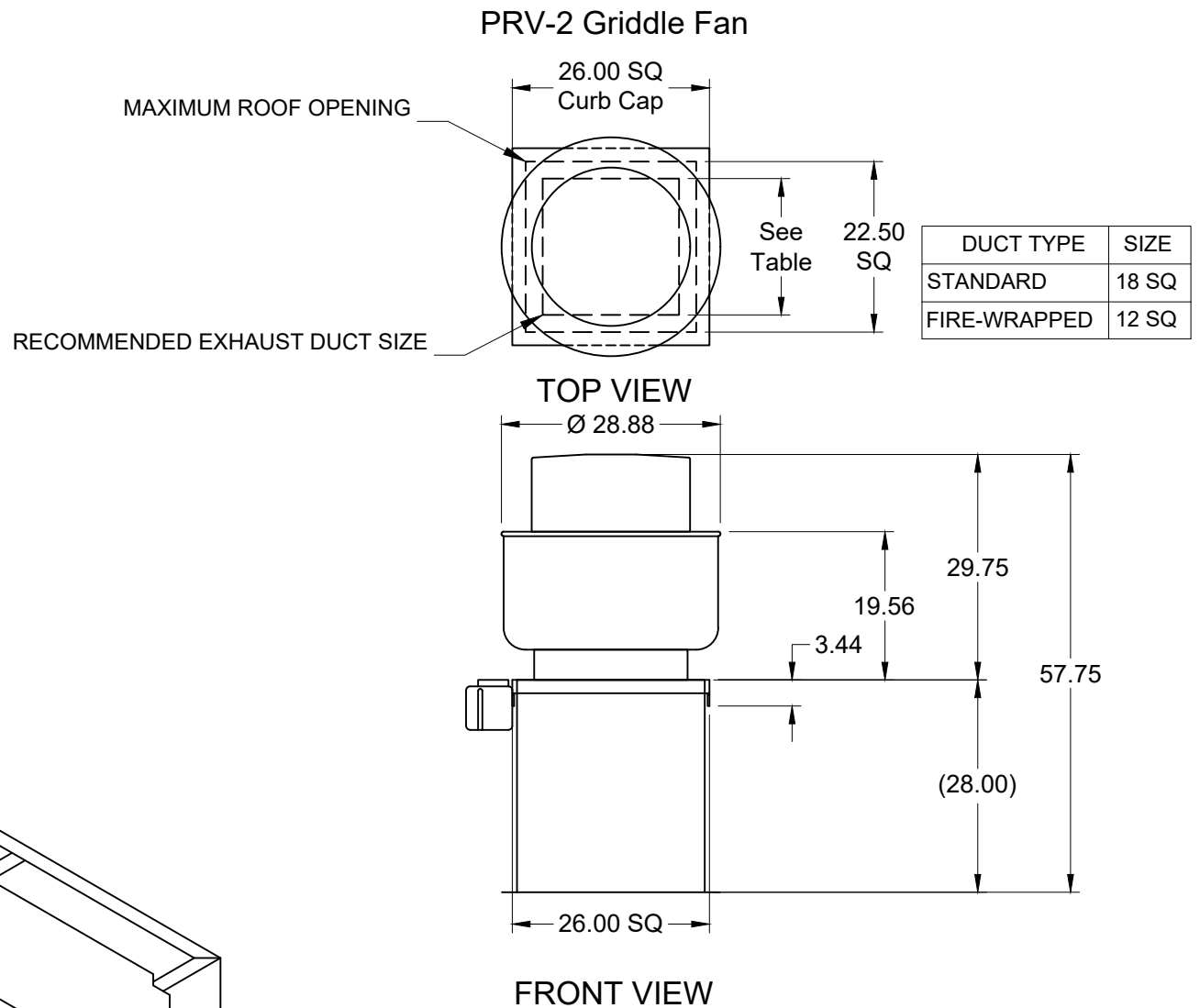


SECTION 1 ELEVATION VIEW

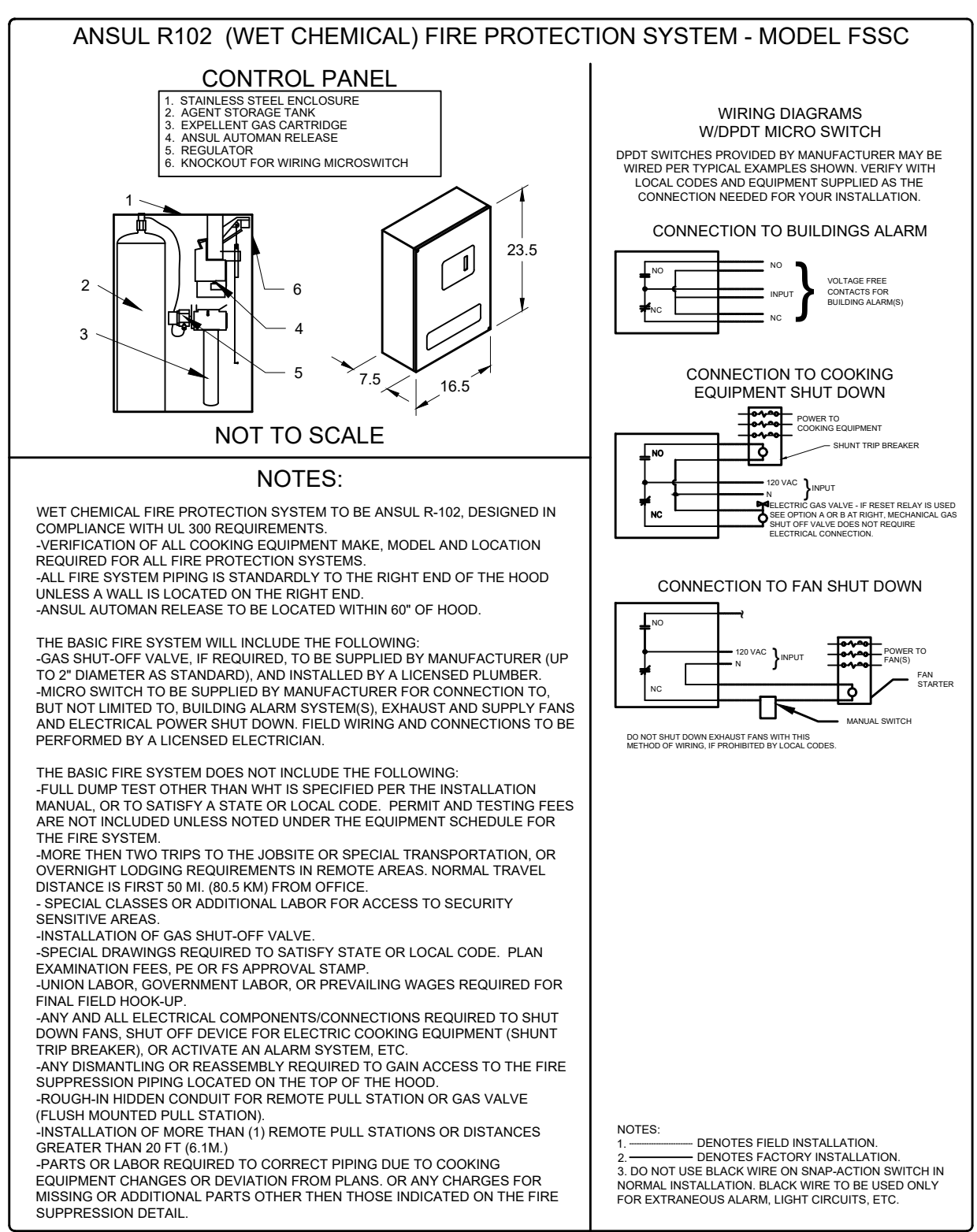
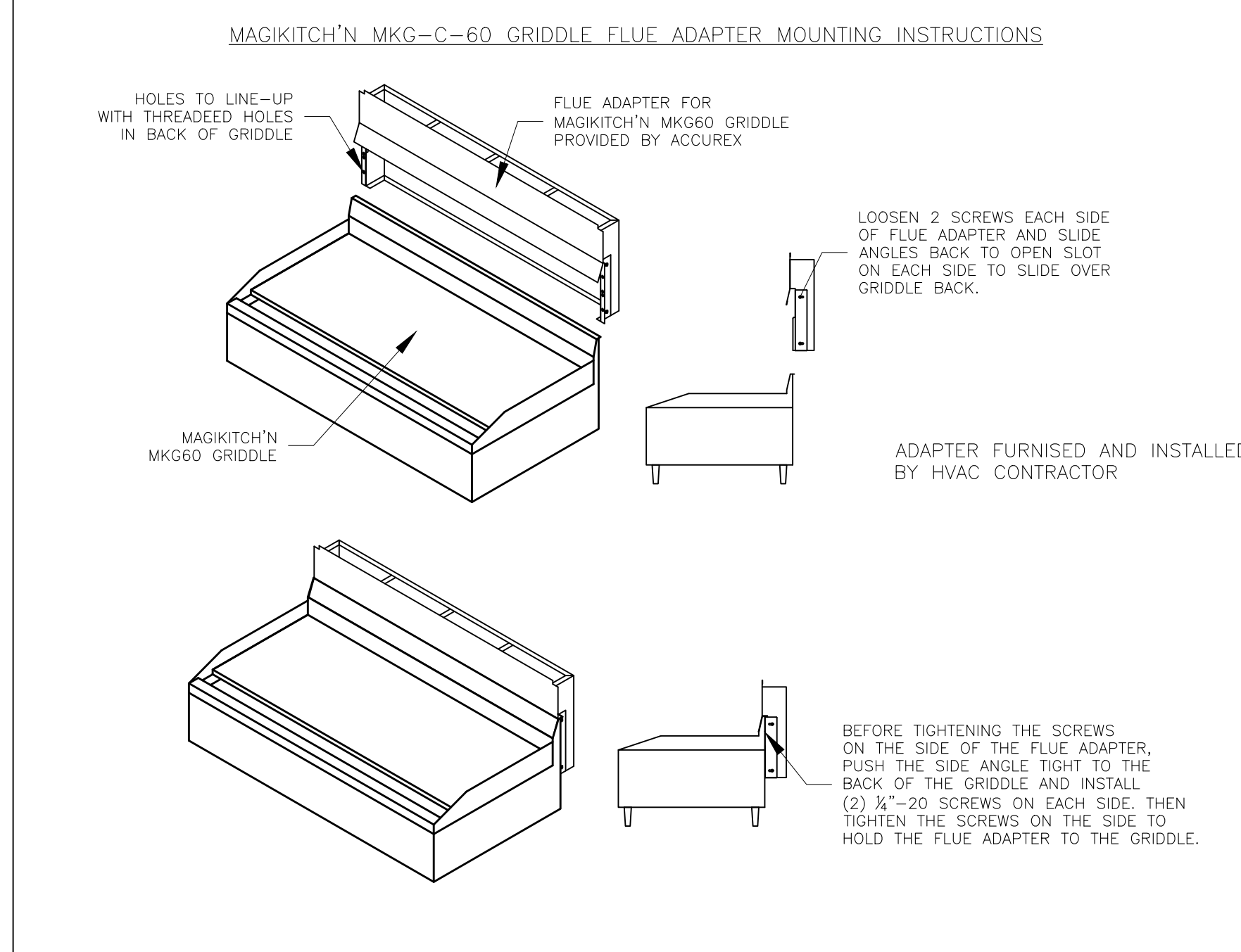
MUST USE WITH MAGIKITCH'N MODEL MKG-C-60
 VERIFY MAGIKITCHEN OR ANETS GRILL



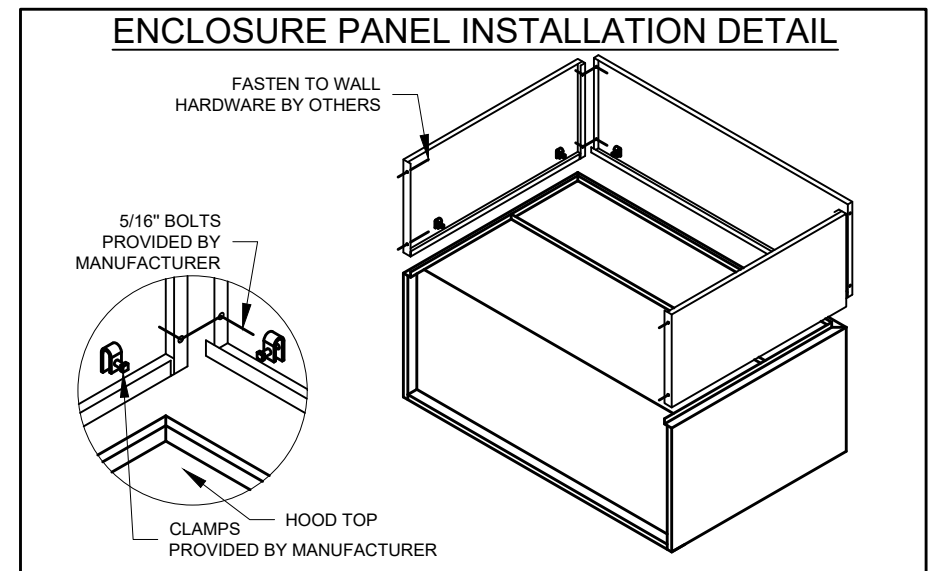
MARK: Griddle Hood SECTION VIEW



FRONT VIEW

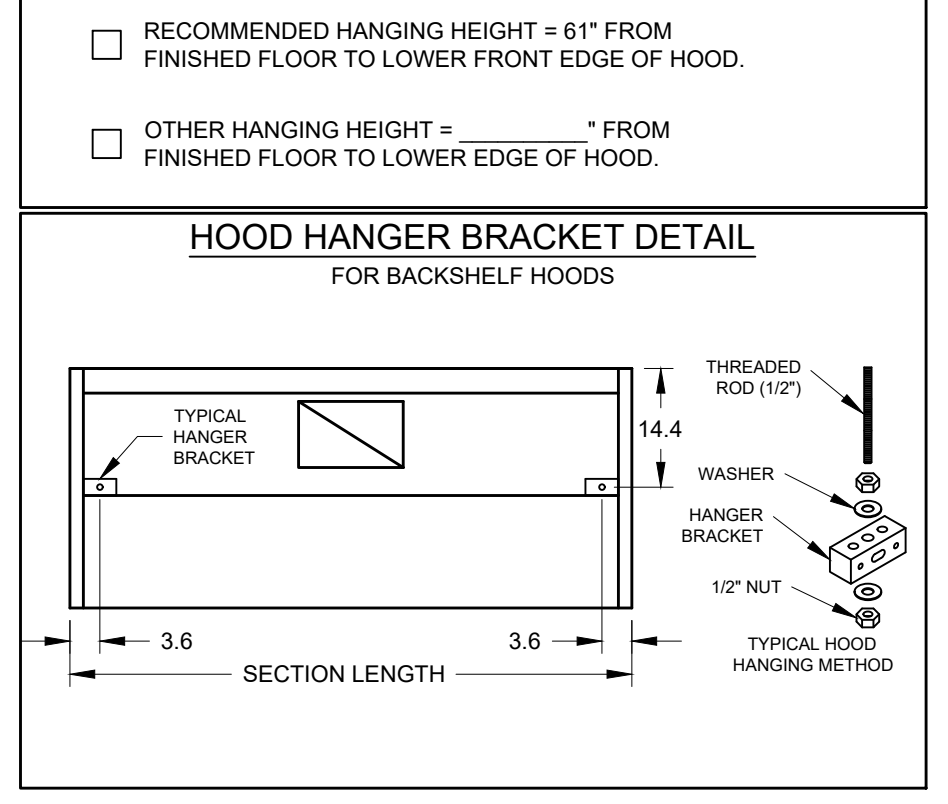


NOTES:



HOOD HANGING HEIGHT FOR FIRE SYSTEMS
 VERIFICATION OF HOOD HANGING HEIGHT ABOVE FINISHED FLOOR (A.F.F.) IS REQUIRED FOR CORRECT PLACEMENT OF FIRE SYSTEM NOZZLES.

- RECOMMENDED HANGING HEIGHT = 61" FROM FINISHED FLOOR TO LOWER FRONT EDGE OF HOOD.
- OTHER HANGING HEIGHT = " FROM FINISHED FLOOR TO LOWER EDGE OF HOOD.



HOOD INFORMATION

HOOD NO.	MARK	MODEL	HOOD DIMENSIONS (IN.)			HOOD CONSTR.	COOKING LOAD / DUTY RATING	TOTAL CFM	EXHAUST COLLAR(S)					MUA CFM	AC CFM	TOTAL WEIGHT LBS.	SECTION LOCATION
			LENGTH	WIDTH	HEIGHT				WIDTH	LENGTH	DIA.	CFM	S.P.				
1	FRYER HOOD	XXEP-83-S	83	TOP 23 BOT 3	FRT 12 BACK 36	430 SS WHERE EXPOSED	MEDIUM	1500	12	12		1500	0.518		169	SINGLE	

HOOD INFORMATION

HOOD NO.	MARK	LIGHTING DETAILS			GREASE FILTRATION DETAILS			UTILITY CABINET(S)			
		FIXTURE TYPE	BULB / LAMP INFO	QTY	FOOT CANDLES	TYPE / MODEL MATERIAL	QTY	SIZE (IN.)	LOCATION	FIRE SYSTEM	CONTROLS
1	FRYER HOOD					X-TRACTOR (SPARK ARRESTOR INCL.) STAINLESS STEEL	5	16			
							0	20	16		

HOOD OPTIONS

UL 710 LISTED W/ OUT EXHAUST FIRE DAMPER - UL #R25625
 BACK NON-INTEGRAL AIR SPACE - 3 IN WIDE
 26 IN HIGH CEILING ENCLOSURES - FRONT LEFT RIGHT - FIELD INSTALLED
 FACTORY MOUNTED EXHAUST COLLAR(S)
 PERFORMANCE ENHANCING LIP (PEL) TECHNOLOGY
 STANDING SEAM CONSTRUCTION FOR SUPERIOR STRENGTH

SPECIAL DESIGN REQUESTS

SDR #K1100559 - NEW PITCO 4L FRYER FLUE BYPASS SYSTEM
 SDR #K1700974 - CULVERS 4VAT 2FIRE PROCESS - FRYER HOOD

FIRE SYSTEM INFORMATION

MARK	MODEL	LOCATION	FLOW POINTS		SUPPLY LINE	DETECTION	MARK(S) PROTECTED BY FIRE SYSTEM
			HOODS	PCU			
FIRE SUPPRESSION-FRYER HOOD	ANSUL R-102 WET CHEMICAL	REMOTE MOUNTED	18 UTILIZED	22 AVAILABLE	CONTINUOUS	FUSIBLE LINK	FRYER HOOD SECTION 1

FIRE SYSTEM OPTIONS AND ACCESSORIES

FULL INSTALLATION (INCLUDES PRE-PIPED HOOD(S) WITH DETECTION AND FACTORY COORDINATED INSTALL)
 CHROME SLEEVES FOR FACTORY PROVIDED APPLIANCES DROPS - INCLUDED
 METAL BLOW-OFF CAPS - INCLUDED
 GAS VALVE - INCLUDED - MECHANICAL SHUTOFF VALVE, 1.5", (ANSUL) - PART# ANSULMECHSHUTOFFVALVE150
 HOOD SUPPRESSION TANK - INCLUDED - 6 GAL. - [(2) 3.0 TANK(S)]
 REMOTE PULL STATION - STANDARD - FIELD INSTALLATION AT SINGLE POINT OF EGRESS
 TANK ENCLOSURES (STAINLESS STEEL) FOR REMOTE MOUNTING - INCLUDED

SPECIAL DESIGN REQUESTS

SDR #K1700974 - CULVERS 4VAT 2FIRE PROCESS - FRYER HOOD
 SDR #K1800795 - FIRE SYSTEM DEDUCT

Direct Drive Upblast Centrifugal Roof Exhaust Fan

MARK INFORMATION		FAN INFORMATION					MOTOR INFORMATION						
QTY	MARK	MODEL	VOLUME (CFM)	TOTAL EXTERNAL SP (IN WG)	FAN RPM	OPERATING POWER (HP)	WEIGHT (LB.)	SIZE (HP)	V/C/P	ENCLOSURE	MOTOR RPM	WINDINGS	NEC FLA*
1	PRV-3 Fryer Fan	XCUE-140-VG	1,500	1	1,365	0.46	92	1	115/60/1	OP	1725	1	16

*NEC FLA - Based on table 430.250 or 430.248 of National Electrical Code 2020. Actual motor FLA may vary for sizing thermal overload, consult factory"

PRV-3 Fryer Fan : SELECTED OPTIONS AND ACCESSORIES

One piece fully welded windband
 Tapered bushing wheel hub
 Breather tube outlet area min. 4.4 sq. in. (sizes 99-480), 2.0 sq. in. (sizes 60-95)
 Min. windband material thickness: 0.051" aluminum (060-240), 0.064" aluminum (240HP, 240XP), 0.080" aluminum (sizes 300-480)
 Larger Curb Cap Size - 26 Square
 UL/cUL 705 Listed - Supplement SC - "Power Ventilators for Restaurant Exh. Appliances" (Formerly UL 762)
 Switch, NEMA-3R, Toggle,
 Hinge, Factory Installed
 High Temp Curb Seal Rated for Continuous Duty at 1500 F (Factory Attached)
 Grease Trap (PN 475538)
 Clean-out Port - Factory Installed
 Conduit Chase Qty 1

ANSUL R102 (WET CHEMICAL) FIRE PROTECTION SYSTEM - MODEL FSSC

CONTROL PANEL

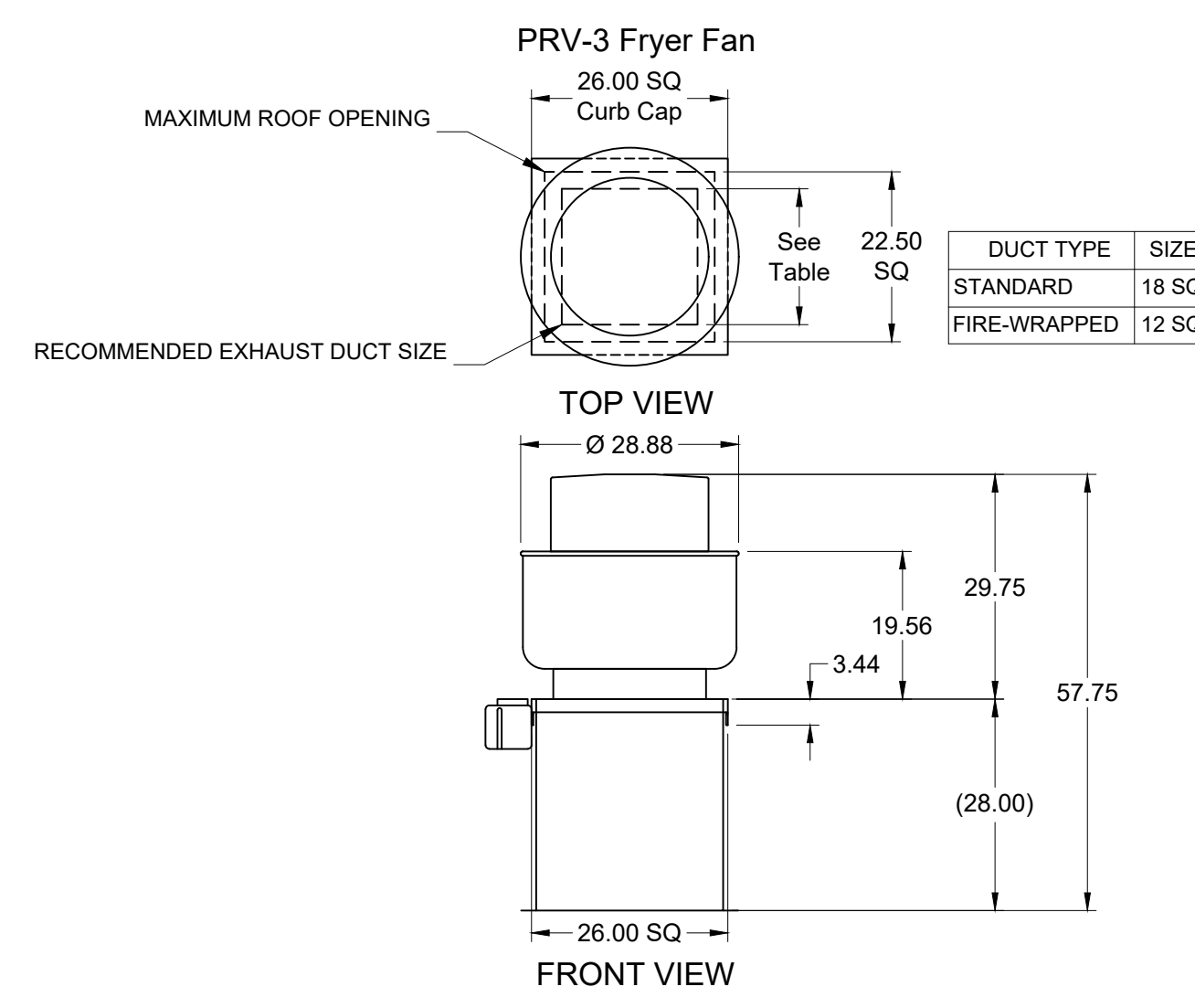
NOTES:

WET CHEMICAL FIRE PROTECTION SYSTEM TO BE ANSUL R-102, DESIGNED IN COMPLIANCE WITH UL 300 REQUIREMENTS
 VERIFICATION OF ALL COOKING EQUIPMENT MAKE, MODEL AND LOCATION REQUIRED FOR ALL FIRE PROTECTION SYSTEMS
 ALL FIRE SYSTEM PIPING IS STANDARDLY TO THE RIGHT END OF THE HOOD UNLESS A WALL IS LOCATED ON THE RIGHT END.
 ANSUL AUTOMAN RELEASE TO BE LOCATED WITHIN 80" OF HOOD.

THE BASIC FIRE SYSTEM WILL INCLUDE THE FOLLOWING:
 GAS SHUT-OFF VALVE, IF REQUIRED, TO BE SUPPLIED BY MANUFACTURER (UP TO 2" DIAMETER AS STANDARD) AND INSTALLED BY A LICENSED PLUMBER
 MICRO SWITCH TO BE SUPPLIED BY MANUFACTURER FOR CONNECTION TO, BUT NOT LIMITED TO, BUILDING ALARM SYSTEM(S), EXHAUST AND SUPPLY FANS AND ELECTRICAL POWER SHUT DOWN. FIELD WIRING AND CONNECTIONS TO BE PERFORMED BY A LICENSED ELECTRICIAN.

THE BASIC FIRE SYSTEM DOES NOT INCLUDE THE FOLLOWING:
 FULL DUMP TEST OTHER THAN WHAT IS SPECIFIED PER THE INSTALLATION MANUAL, OR TO SATISFY A STATE OR LOCAL CODE. PERMIT AND TESTING FEES ARE NOT INCLUDED UNLESS NOTED UNDER THE EQUIPMENT SCHEDULE FOR THE FIRE SYSTEM.
 MORE THAN TWO TRIPS TO THE JOBSITE OR SPECIAL TRANSPORTATION, OR OVERSIGHT LOGGING REQUIREMENTS IN REMOTE AREAS. NORMAL TRAVEL DISTANCE IS FIRST 50 MI. (80.5 KM) FROM OFFICE.
 SPECIAL GLASSES OR ADDITIONAL LABOR FOR ACCESS TO SECURITY SENSITIVE AREAS.
 INSTALLATION OF GAS SHUT-OFF VALVE
 SPECIAL DRAWINGS REQUIRED TO SATISFY STATE OR LOCAL CODE. PLAN EXAMINATION FEES, PE OR FS APPROVAL STAMP.
 UNION LABOR, GOVERNMENT LABOR, OR PREVAILING WAGES REQUIRED FOR FINAL FIELD HOOKUP.
 ANY AND ALL ELECTRICAL COMPONENTS/CONNECTIONS REQUIRED TO SHUT DOWN FANS, SHUT OFF DEVICE FOR ELECTRIC COOKING EQUIPMENT (SHUNT TRIP BREAKER), OR ACTIVATE AN ALARM SYSTEM, ETC.
 ANY DISMANTLING OR REASSEMBLY REQUIRED TO GAIN ACCESS TO THE FIRE SUPPRESSION PIPING LOCATED ON THE TOP OF THE HOOD.
 ROUGH-IN HIDDEN CONDUIT FOR REMOTE PULL STATION OR GAS VALVE (FLUSH MOUNTED PULL STATION)
 INSTALLATION OF MORE THAN (1) REMOTE PULL STATIONS OR DISTANCES GREATER THAN 20 FT (6.1M)
 PARTS OR LABOR REQUIRED TO CORRECT PIPING DUE TO COOKING EQUIPMENT CHANGES OR DEVIATION FROM PLANS, OR ANY CHARGES FOR MISSING OR ADDITIONAL PARTS OTHER THAN THOSE INDICATED ON THE FIRE SUPPRESSION DETAIL.

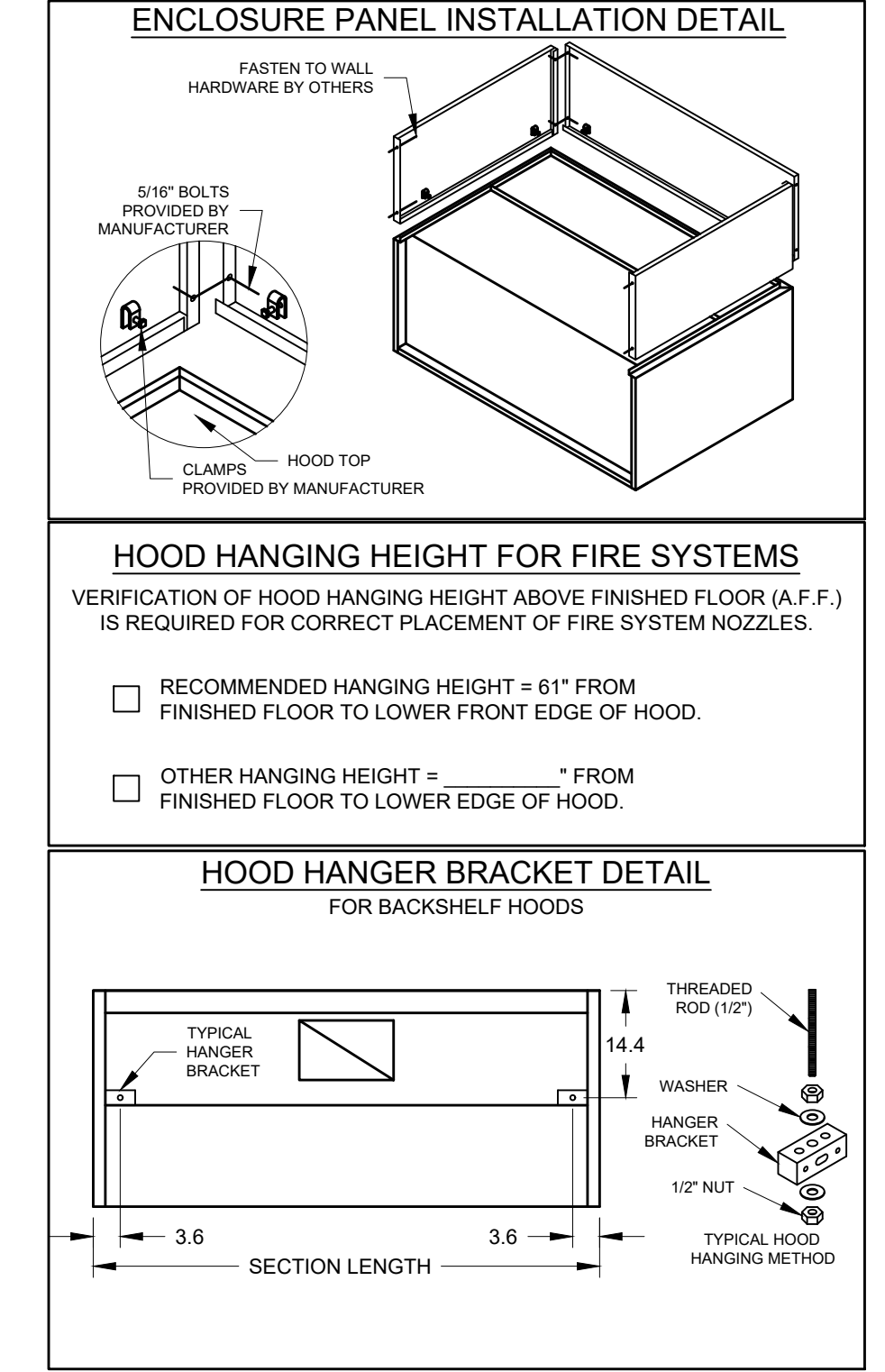
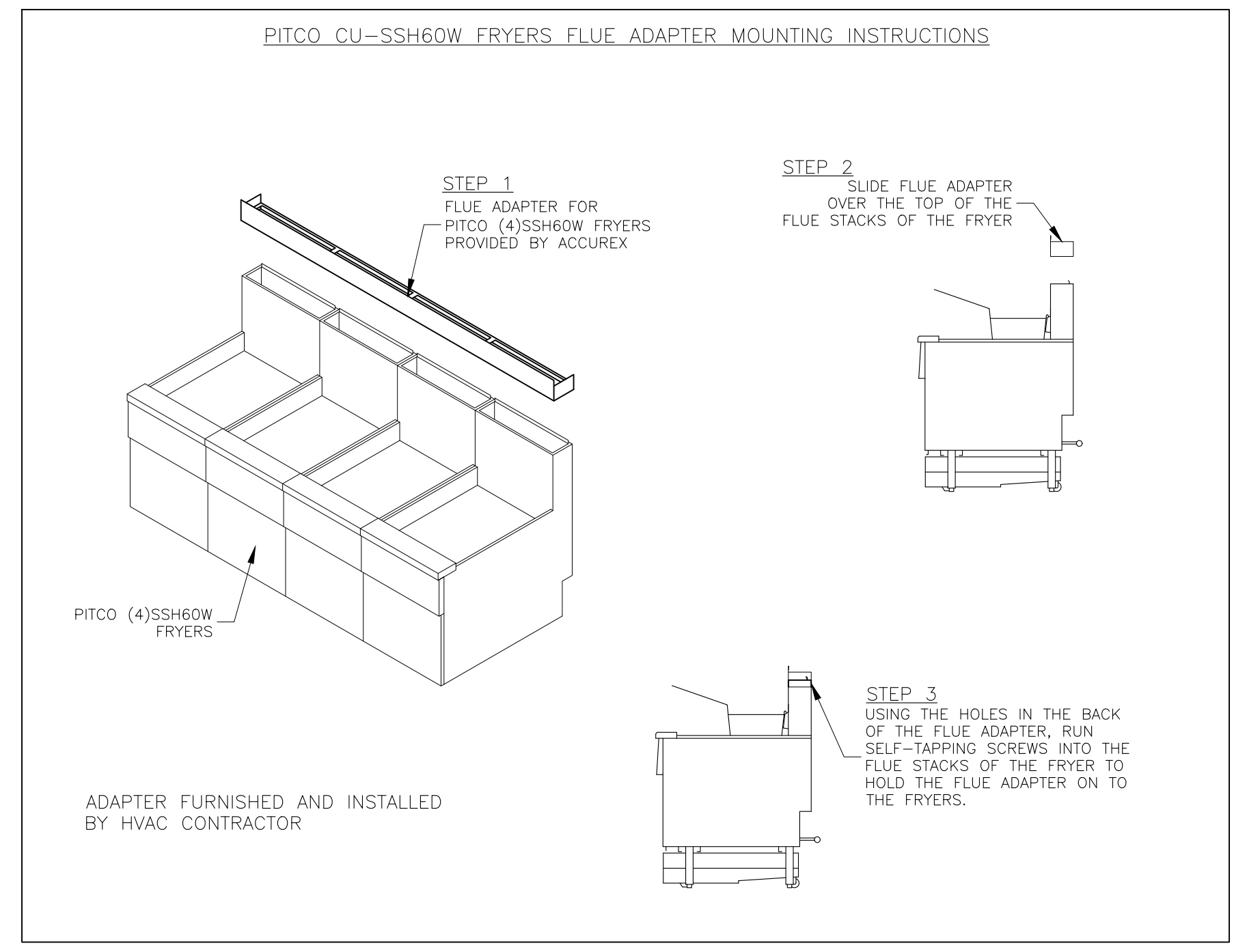
NOTES:
 1. _____ DENOTES FIELD INSTALLATION.
 2. _____ DENOTES FACTORY INSTALLATION.
 3. DO NOT USE BLACK WIRE ON SNAP-ACTION SWITCH IN NORMAL INSTALLATION. BLACK WIRE TO BE USED ONLY FOR EXTRANEOUS ALARM, LIGHT CIRCUITS, ETC.



MUST USE WITH PITCO MODEL CU-SSH60W

PITCO FRYER 4-VAT FLUE ADAPTER

VERIFY 4-VAT OR 5-VAT FRYER BATTERY



ACCUREX

CULVERS AVON PARK, FL (GRV)

FRYER HOOD PRV-3 FRYER FAN FIRE SUPPRESSION-FRYER HOOD

PROJECT 12/4/2019

MARK

ACCUREX - WI, IA
 PHILLIP KRAFT
 PHILLIP.KRAFT@ACCUREX.COM
 262-227-7865

HOOD INFORMATION																
HOOD NO.	MARK	MODEL	HOOD DIMENSIONS (IN.)			HOOD CONST.	COOKING LOAD / DUTY RATING	EXHAUST					SUPPLY		TOTAL WEIGHT LBS.	SECTION LOCATION
			LENGTH	WIDTH	HEIGHT			TOTAL CFM	COLLAR(S)			MUA CFM	AC CFM			
								WIDTH	LENGTH	DIA.	CFM	S.P.				
1	CONDENSATE HOOD	XD3-42-S	42.00	42	24	300 SS 100%	350.0	7	7		350	0.127			110	SINGLE

CONTROL INFORMATION									
MARK	ELECTRICAL CONTROL PACKAGE			USER INTERFACE					
	MODEL	LOCATION	TYPE	LOCATION	TYPE	LOCATION			
CONTROLS	XKC-CV-S-22-2-1-0	SHIP LOOSE ENCLOSURE	FULL COLOR TOUCHSCREEN			SHIP LOOSE			

HOOD INFORMATION												
HOOD NO.	MARK	LIGHTING DETAILS			BAFFLE FILTRATION DETAILS			UTILITY CABINET(S)				
		FIXTURE TYPE BULB / LAMP INFO	QTY	FOOT CANDLES	TYPE / MODEL MATERIAL	QTY	SIZE (IN.) L H	LOCATION	FIRE SYSTEM TYPE	SIZE	MODEL	CONTROLS INTERFACE
1	CONDENSATE HOOD				TWO SIDES							

FANS CONTROLLED											
FAN #	TYPE	FAN	FAN MARK	ZONE	CFM	MOTOR HP	MOTOR VOLT	CYCLE	MOTOR PHASE	MOTOR STARTER IN PANEL	VFD IN PANEL
1	SUPPLY	S1	RTU-1	1	1500	1	208	60	3	NO	NO
2	SUPPLY	S2	RTU-2	2	1500	1	208	60	3	NO	NO
3	EXHAUST	E1	PRV-2 GRIDDLE FAN	2	1500	1	115	60	1	NO	NO
4	EXHAUST	E2	PRV-3 FRYER FAN	1	1500	1	115	60	1	NO	NO

HOOD OPTIONS												
FACTORY MOUNTED EXHAUST COLLAR(S)												
Ceiling Exhaust Fan												

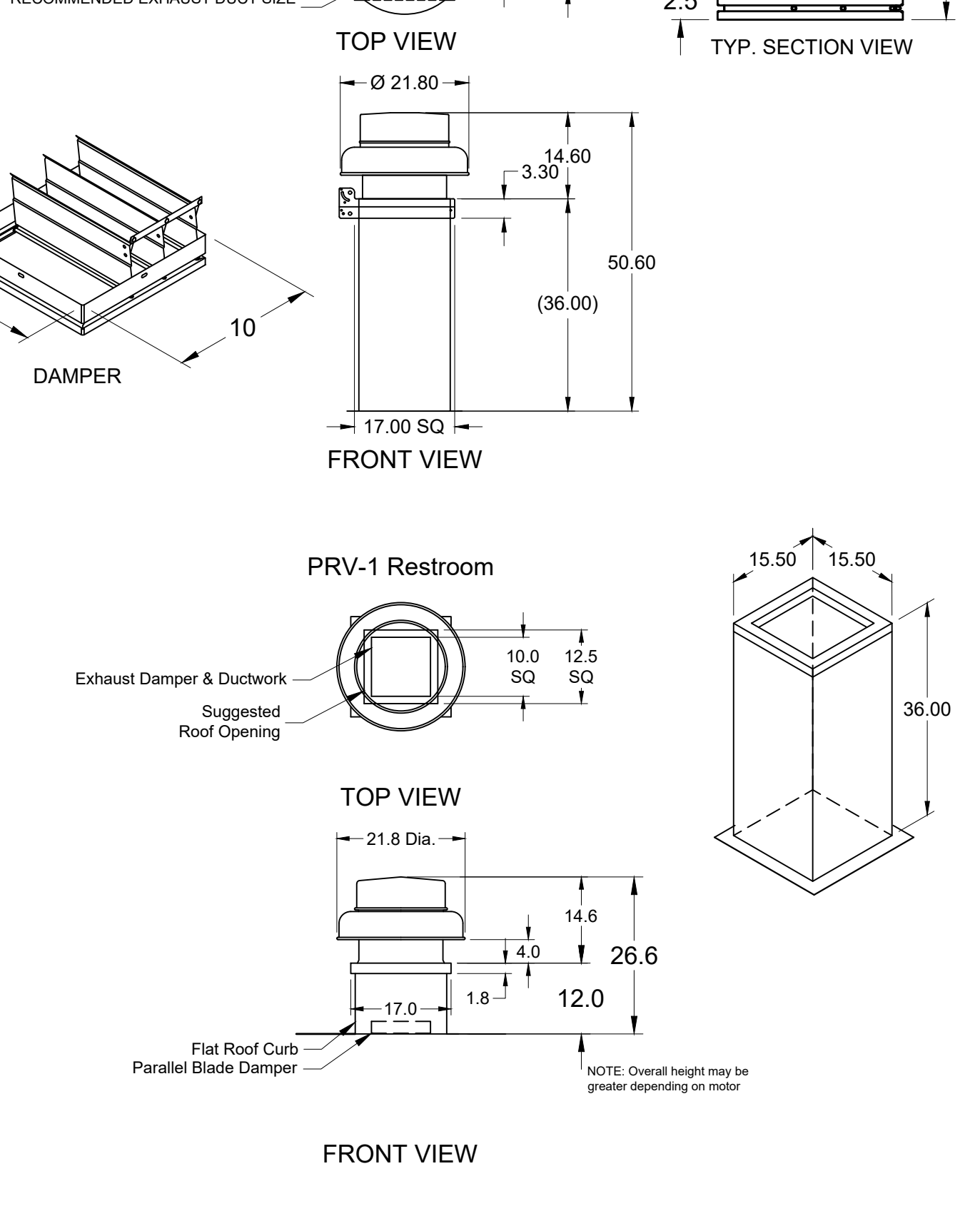
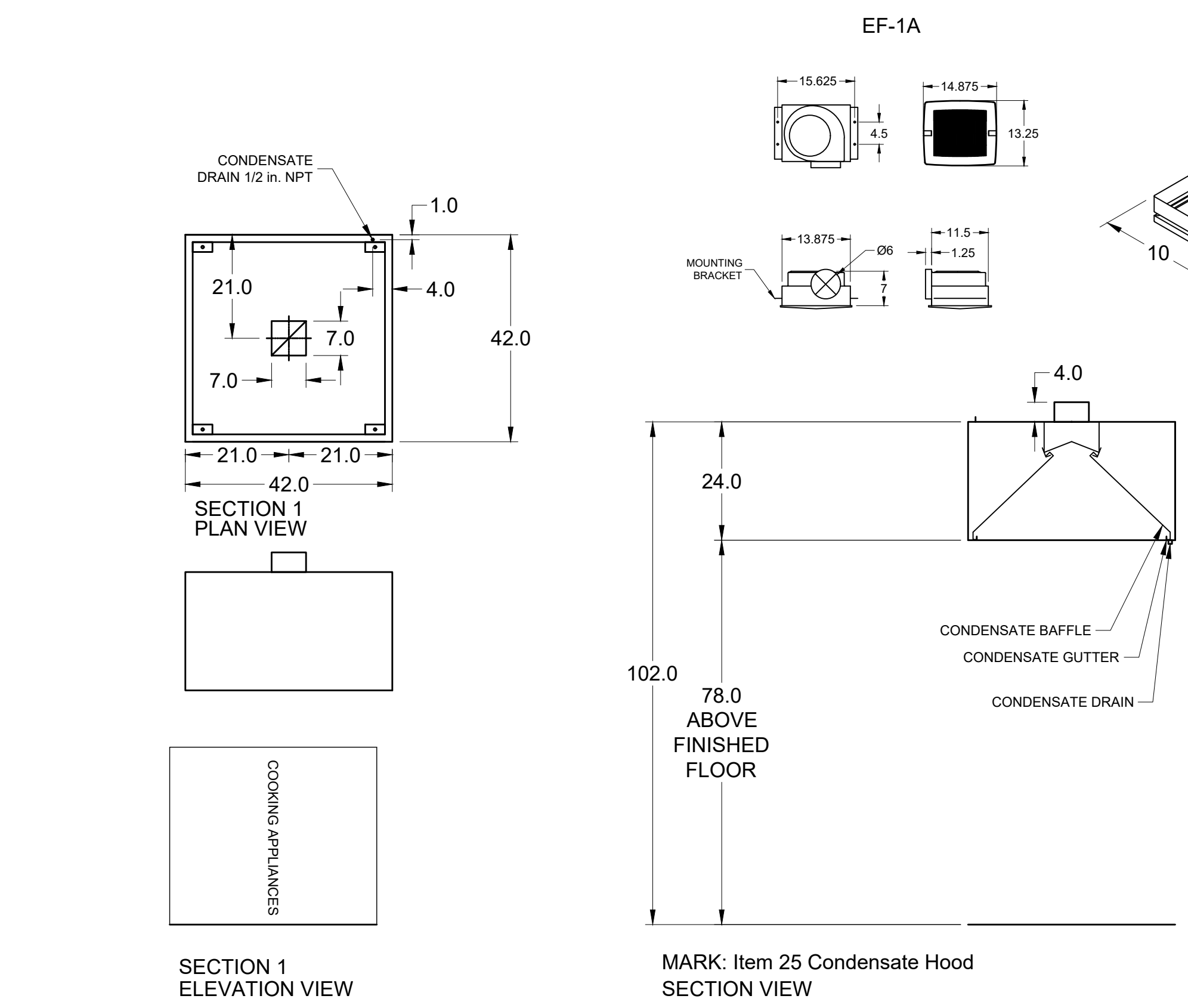
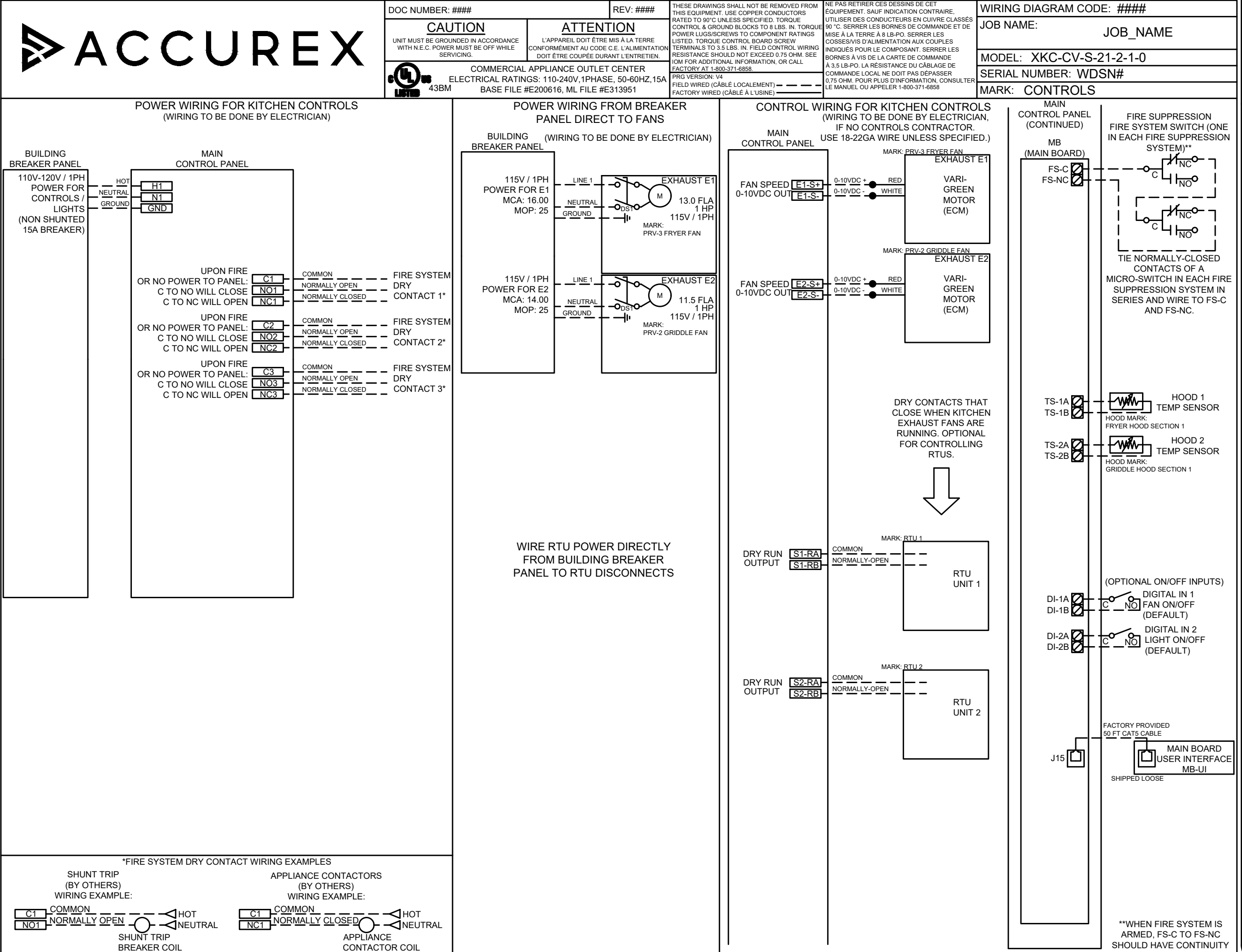
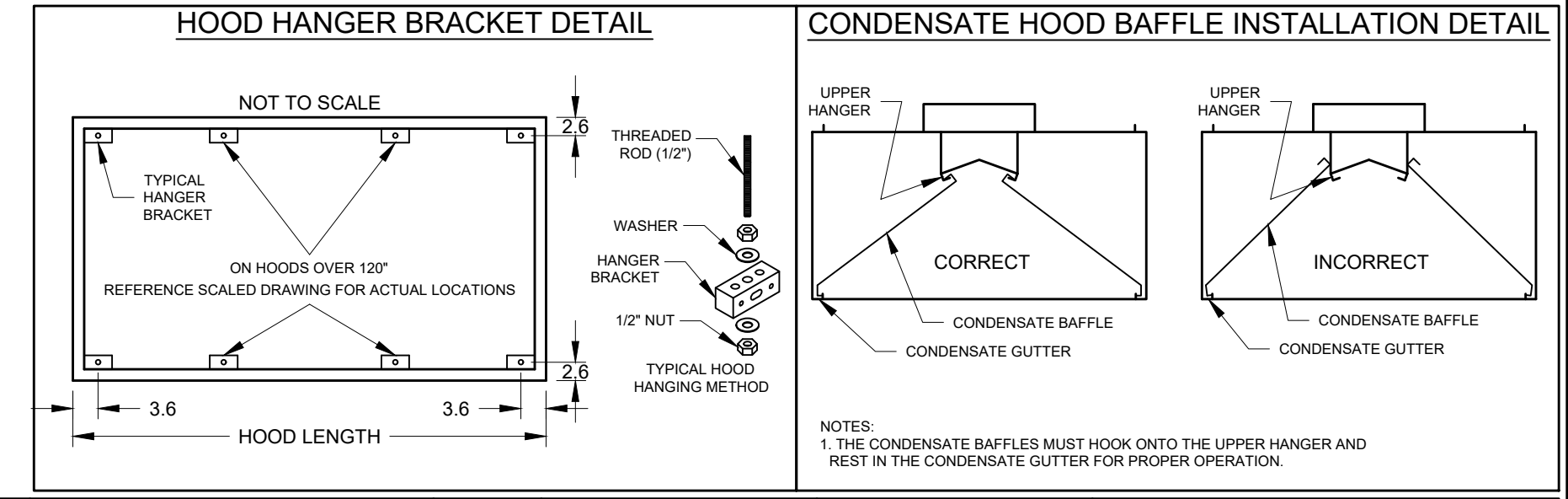
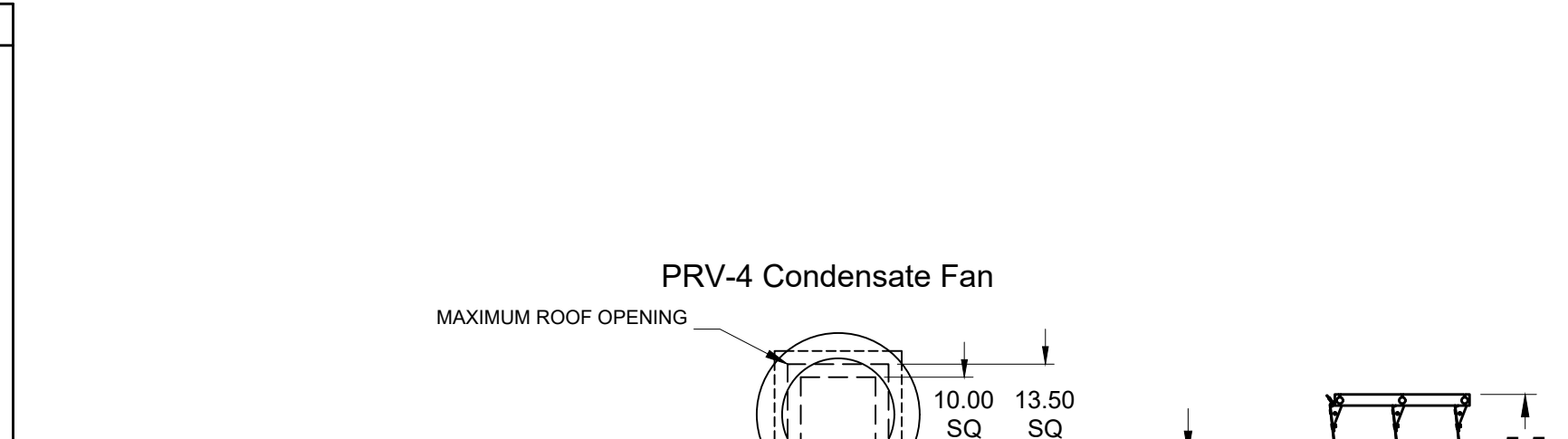
CONTROL FEATURES					SPECIAL DESIGN REQUESTS				
TEMP SENSORS (FACTORY INSTALLED) - QTY. 2					SDR #K2000462 - CULVERS CONTROL PANEL - EXTRA SET OF FIRE CONTACTS - REVISE WIRING DIAGRAMS				
DRY FIRE CONTACTS - QTY. 2									
EXHAUST MAX DURING FIRE									
SUPPLY OFF DURING FIRE									

Ceiling Exhaust Fan												
MARK INFORMATION			FAN INFORMATION					MOTOR INFORMATION				
QTY	MARK	MODEL	VOLUME (CFM)	TOTAL EXTERNAL SP (IN WG)	FAN RPM	OPERATING POWER (HP)	WEIGHT (LB.)	SIZE (HP)	V/C/P	ENCLOSURE	MOTOR RPM	WINDINGS
1	EF-1	XCR-A200	220	0.125	831	0.02	26	0	115/60/1	OP	900	1
1	EF-2	XCR-B50	50	0.125	523	0.01	10	0	115/60/1	OP	625	1
3	EF-3	XCR-B70	70	0.1	644	0.01	10	0	115/60/1	OP	675	1

EF-1 : SELECTED OPTIONS AND ACCESSORIES				EF-2 : SELECTED OPTIONS AND ACCESSORIES				EF-3 : SELECTED OPTIONS AND ACCESSORIES			
UL/cUL 507 Listed - Electric Fan Solid State Speed Control, 6 Amp, Mounted and Wired Internally Round Duct Connector, (PN: RDC-8) Shipped Loose Adjustable easy installation mounting bracket Standard Grille Polypropylene Wheel Material Can Be Used to Comply with: ASHRAE 62.2 and Washington State Energy Code				UL/cUL 507 Listed - Electric Fan Solid State Speed Control, 6 Amp, Mounted and Wired Internally Round Hooded Wall Cap, (PN: WC-6) Shipped Loose Round Duct Connection Adjustable easy installation mounting bracket Standard Grille Polypropylene Wheel Material Can Be Used to Comply with: ASHRAE 62.2 and Washington State Energy Code				UL/cUL 507 Listed - Electric Fan Solid State Speed Control, 6 Amp, Mounted and Wired Internally Round Duct Connection Adjustable easy installation mounting bracket Standard Grille Polypropylene Wheel Material Can Be Used to Comply with: ASHRAE 62.2 and Washington State Energy Code			

Direct Drive Centrifugal Roof Exhaust Fan												
MARK INFORMATION			FAN INFORMATION					MOTOR INFORMATION				
QTY	MARK	MODEL	VOLUME (CFM)	TOTAL EXTERNAL SP (IN WG)	FAN RPM	OPERATING POWER (HP)	WEIGHT (LB.)	SIZE (HP)	V/C/P	ENCLOSURE	MOTOR RPM	WINDINGS
1	PRV-4 Condensate Fan	XRED-095-D	350	0.6	1,487	0.09	35	0.125	115/60/1	OP	1550	1

PRV-4 Condensate Fan : SELECTED OPTIONS AND ACCESSORIES												
Standard Curb Cap Size - 17 Square												
UL/cUL 705 Listed - "Power Ventilators" Switch, NEMA-1, Toggle												
Hinge, (PN 918394), (Shipped Loose)												
Damper Shipped Loose, BD-100-PB-10X10, Gravity Operated, Not Coated, Nominal Size												
Solid State Speed Control, 6 Amp, Shipped Loose												
Birdscreen: Galvanized, nom. 84% Free Area												
Composite Wheel Material												
Conduit Chase Qty 1												



PROJECT 12/4/2019
 ACCUREX - WI IA
 PHILLIP KRAFT
 PHILLIP.KRAFT@ACCUREX.COM
 262-227-7865
 CULVERS AVON PARK, FL (GRV)
 ITEM 25 CONDENSATE HOOD
 PRV-1 RESTROOM
 EF-1A
 CONTROLS
 UL LISTED
 ACCUREX