

This document contains confidential information, is an instrument of a professional service, and the property of TriMark. It shall not be used on other projects or for the extension of this project without TriMark's written approval.

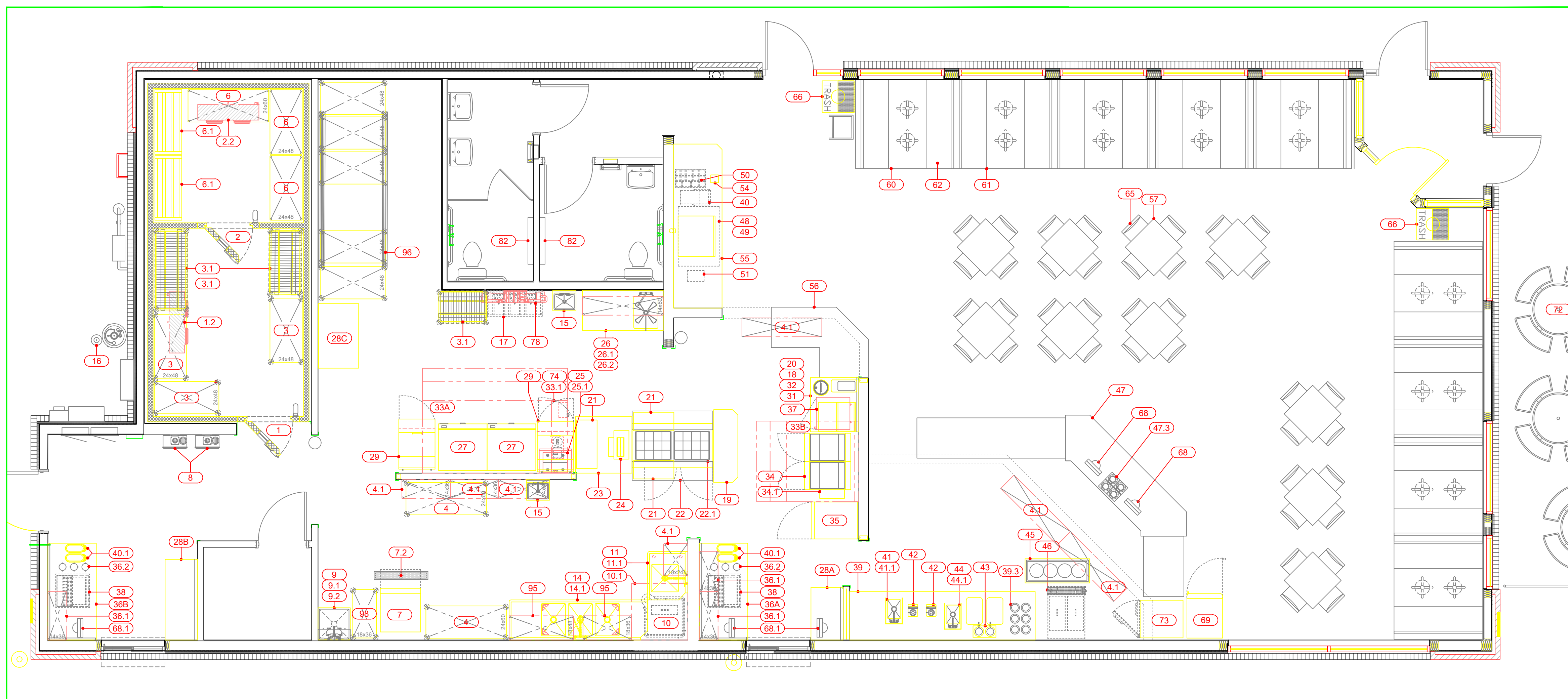
Owner and all Contractors to check and verify existing dimensions and conditions in the field before starting construction and to notify TriMark of any material or detail changes.

**GENERAL NOTES**

1. THESE DRAWINGS ARE TO BE USED AS AN INSTRUMENT OF REFERENCE BY ALL OTHER TRADES AND CONTRACTORS. ALL TRADES SHALL VERIFY THE INFORMATION AS INDICATED ON THESE PLANS.
2. DIMENSIONS AND REQUIREMENTS FOR ALL EQUIPMENT THAT IS LISTED AS EXISTING, PROVIDED BY OTHERS OR PROVIDED BY OWNER, MUST BE VERIFIED WITH THE APPROPRIATE PARTIES.
3. ALL LOCAL, STATE AND NATIONAL CODES SHALL APPLY.
4. ALL DIMENSIONS ON THESE PLANS ARE BASED ON FINISHED WALL AND FLOOR DIMENSIONS. ANY DISCREPANCIES BETWEEN THESE DRAWINGS AND ACTUAL OR INTENDED CONDITIONS IN THE FIELD SHOULD BE REPORTED TO HOCKENBERGS IMMEDIATELY.
5. UNLESS OTHERWISE NOTED, ARCHITECT TO LOCATE GENERAL CONTRACTOR TO PROVIDE ALL ROOF/BUILDING PENETRATIONS AND CURBS FOR EXHAUST/SUPPLY AIR SYSTEMS AND REMOTE COMPRESSORS.
6. ARCHITECT TO LOCATE ALL REMOTE COMPRESSORS AND CONDENSERS IN ACCORDANCE WITH MANUFACTURER'S INSTRUCTIONS.
7. UNLESS OTHERWISE NOTED ALL DIMENSIONS SHOWN ON THIS PLAN ARE FROM THE FINISHED FLOOR, CEILING OR WALLS TO THE CENTERLINE OF THE ROUGH-INS.
8. HOCKENBERGS DOES NOT EMPLOY A LICENSED ARCHITECT OR ENGINEER. THESE DOCUMENTS PROVIDED BY HOCKENBERGS ARE GUIDELINE DOCUMENTS ONLY AND ARE INTENDED TO BE INCORPORATED INTO THE FINAL CONSTRUCTION DOCUMENTS BY A LICENSED ARCHITECT OR ENGINEER THAT IS EMPLOYED BY THE OWNER. FINAL CODE COMPLIANCE, PLAN SUBMITTAL AND ASSOCIATED FEES ARE THE RESPONSIBILITY OF THE ARCHITECT AND/OR GENERAL CONTRACTOR.

**REVISIONS**

DATE	NO.	DESCRIPTION	MADE BY



**EQUIPMENT SCHEDULE**

ITEM NO	QTY	EQUIPMENT CATEGORY	ITEM NO	QTY	EQUIPMENT CATEGORY	ITEM NO	QTY	EQUIPMENT CATEGORY
1	1	WALK-IN COOLER	26	1	WORKABLE WITH SINK	50	1	CONDIMENT RACKS - BY OTHERS
1.1	1	WALK-IN COOLER REMOTE COMPRESSOR	26.1	1	FAUCET	51	1	NAPKIN DISPENSER - BY OTHERS
1.2	1	WALK-IN COOLER EVAPORATOR COIL	26.2	1	OVERSHELF	52-53	-	SPARE NUMBER
2	1	WALK-IN FREEZER	27	2	GRIDDLE, ELECTRIC	54	1	TRASH RECEPTACLE OPENING
2.1	1	WALK-IN FREEZER REMOTE COMPRESSOR	28A	1	WORKTABLE	55	1	BEVERAGE/ CONDIMENT COUNTER
2.2	1	WALK-IN FREEZER EVAPORATOR COIL	28B	1	WORKTABLE	56	1	PICK UP COUNTER - BY OTHERS
3	LOT	MOBILE WALK-IN COOLER SHELVING	28C	1	WORKTABLE	57	LOT	TABLES WITH BASES (4 TOP) - (BY OWNER)
3.1	LOT	HEAVY DUTY SHELVING	29	2	SANDWICH / SALAD PREP REFRIGERATOR	58-59	-	SPARE NUMBER
4	LOT	MOBILE STORAGE SHELVING	30	-	SPARE NUMBER	60	LOT	SINGLE BOOTHS - BY OTHERS
4.1	LOT	WALL MOUNT SHELF, 80" AFF	31	1	WORKTABLE	61	LOT	DOUBLE BOOTHS - BY OTHERS
5	-	SPARE NUMBER	32	1	FRY WARMER	62	LOT	BOOTH TABLES - BY OTHERS
6	LOT	WALK-IN FREEZER SHELVING	33.1	1	FIRE SUPPRESSION SYSTEM	63-64	-	SPARE NUMBER
6.1	LOT	FREEZER DUNNAGE RACKS	33A	1	GRILL EXHAUST HOOD	65	40	CHAIRS
7	1	ICE MACHINE	33B	1	FRYER EXHAUST HOOD	66	2	TRASH RECEPTACLE
7.1	1	REMOTE ICE MACHINE CONDENSER	34	1	FRYER BATTERY WITH FILTER, GAS	67	-	SPARE NUMBER
7.2	1	FLOOR TROUGH - BY OTHERS	34.1	1	PICKLE BASKET SHELF	68	2	POS STATIONS (FRONT COUNTER) - BY OTHERS
8	1	HOT WATER HEATER - BY OTHERS	35	1	REACH-IN FREEZER	68.1	3	POS STATIONS (DRIVE THRU) - BY OTHERS
9	1	MOP SINK	36A	1	DRIVE-THRU BEVERAGE COUNTER	69	1	FREEZER
9.1	1	SERVICE FAUCET	36B	1	DRIVE-THRU BEVERAGE COUNTER	70-71	-	SPARE NUMBER
9.2	1	MOP RACK	36.1	6	OVERSHELVES, STACKED	72	LOT	OUTDOOR PATIO TABLES
10	1	DISHMACHINE - BY OTHERS	36.2	6	CUP DISPENSERS	73	1	REACH-IN REFRIGERATOR
10.1	1	CONDENSATE HOOD	37	1	UNDERCOUNTER REFRIGERATOR	74	1	HOOD CONTROL PANEL
11	1	SOILED DISHTABLE	38	2	SODA DISPENSER - BY OTHERS	74.1	1	EXHAUST HOOD FAN (GRIDDLE)
11.1	1	PRE-RINSE FAUCET	39	1	CUSTARD COUNTER	74.2	1	EXHAUST HOOD FAN (FRYER)
12-13	-	SPARE NUMBER	39.3	6	CUP DISPENSERS	74.3	1	DOAS SYSTEM
14	1	3-COMPARTMENT SINK / CLEAN DISH TABLE	40	1	TEA BREWER - BY OTHERS	74.4	1	CONDENSATE FAN
14.1	1	PRE-RINSE WITH ADD-A-FAUCET	40.1	2	TEA DISPENSER - BY OTHERS	75-77	-	SPARE NUMBER
15	2	HAND SINK	41	1	HAND SINK	78	1	WATER FILTER
16	1	CO2 TANK - BY OTHERS	41.1	1	FAUCET	79-81	-	SPARE NUMBER
17	1	BAG-N-BOX - BY OTHERS	42	2	BLENDEERS	82	2	CHANGING STATION - (HORIZONTAL)
18	1	FOOD WARMER	43	1	HOT FUDGE DISPENSER	83-84	-	SPARE NUMBER
19	1	WORK TABLE	44	1	SERVICE SINK	85	-	SPARE NUMBER
20	1	CHEESE WARMER	44.1	1	FAUCET	86-94	-	SPARE NUMBER
21	3	HEATED SHELF	45	1	DIPPING CABINET (4 BARREL)	95	LOT	SMARTWALL SHELVING
22	1	SANDWICH / SALAD PREP REFRIGERATOR	46	1	CUSTARD MACHINE	96	1	TOP TRACK SHELVING
22.1	1	BURGER ASSEMBLY SHELVES	47	1	FRONT ORDER COUNTER - BY OTHERS	97	-	SPARE NUMBER
23	1	WORKTABLE WITH LOAD CENTER	47.3	1	DROP-IN CUP DISPENSER	98	LOT	POLYMER SHELVING
24	1	CONVEYOR TOASTER	48	1	SODA DISPENSER - BY OTHERS			
25	1	HOT DOG STEAMER	49	1	ICE MACHINE			
25.1	1	HOT DOG STEAMER SHELF	49.1	1	REMOTE ICE MACHINE CONDENSER			

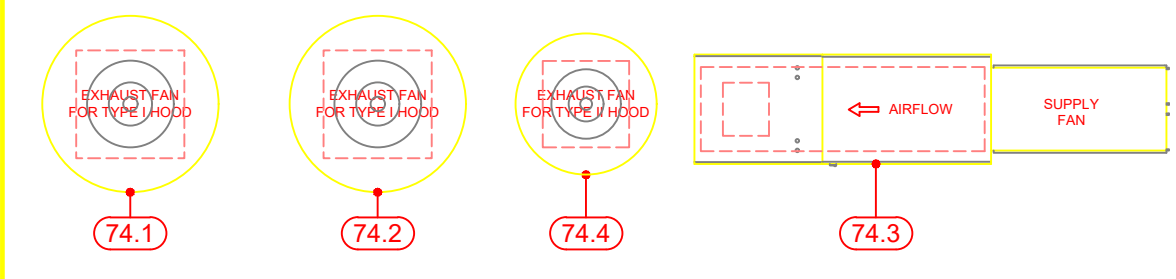
**ROOFTOP EXHAUST FANS & MAKE-UP AIR UNITS**

THESE ROOF TOP ITEMS ARE TO BE LOCATED BY THE ARCHITECT & ENGINEERS IN CONJUNCTION WITH THE EXHAUST HOOD MANUFACTURER'S SHOP DRAWING. REFER TO ARCHITECTURAL/ENGINEERING DRAWINGS FOR EXACT LOCATIONS.

REFER TO THE LATEST APPROVED MANUFACTURER'S SHOP DRAWINGS FOR COMPLETE INFORMATION AND DETAILS REGARDING ALL ASPECTS OF FANS & MAKE UP AIR UNITS, INCLUDING ACTUAL SIZES, REQUIRED CLEARANCE, ETC.

ALL PENETRATIONS THRU ROOF OR BUILDING STRUCTURE, INCLUDING WALLS, FLOORS, JOISTS OR OTHER STRUCTURAL MEMBERS, IS TO BE BY OTHERS.

ALL ELECTRICAL DISCONNECTS TO BE PROVIDED BY OTHERS.



**REMOTE COMPRESSORS & CONDENSING UNITS**

THESE NOTES APPLY TO MULTI-SYSTEM COMPRESSOR RACKS AS WELL AS INDIVIDUAL COMPRESSORS AND CONDENSERS.

EXACT LOCATION OF COMPRESSORS ARE TO BE DETERMINED BY ARCHITECT. FREE & EASY ACCESS INTO AREA FOR COMPRESSORS MUST BE PROVIDED BY OTHERS, TO ALLOW PLACEMENT OF RACK AS WELL AS MAINTAIN MINIMUM CLEARANCE REQUIREMENTS.

SUFFICIENT AIR CHANGES MUST BE PROVIDED IN THIS AREA TO ALLOW ADEQUATE AIR CIRCULATION FOR WATER COOLED OR AIR COOLED COMPRESSORS.

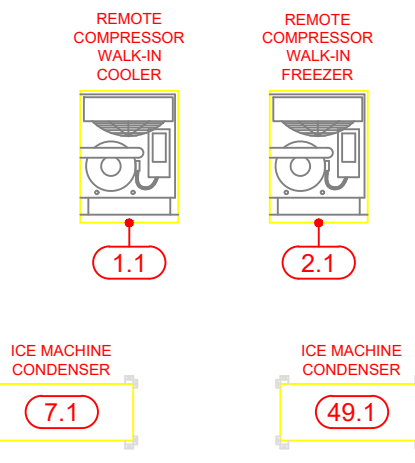
STRUCTURAL SUPPORT AS WELL AS CURBS, PADS OR REDWOOD RAILS FOR COMPRESSORS, ON ROOF OR INSIDE STRUCTURE, TO BE PROVIDED BY OTHERS.

SEE MANUFACTURER'S SHOP DRAWINGS FOR DETAILED REQUIREMENTS FOR CLEARANCE ACTUAL SIZES, MECHANICAL, PLUMBING & ELECTRICAL REQUIREMENTS. FOR WATER COOLED UNITS, STRICT ADHERENCE TO MANUFACTURER'S REQUIREMENTS FOR MIN. MAX WATER TEMP AND PRESSURE MUST BE MAINTAINED.

ASHRAE CALCULATIONS AND ANY RESULTING REQUIREMENTS FOR COMPRESSOR AREA, PIPING CHASES AND FREON DETECTION SYSTEMS SHALL BE THE RESPONSIBILITY OF OTHERS.

ALL REFRIGERANT PIPING CHASES AND BUILDING PENETRATIONS SHALL BE THE RESPONSIBILITY OF THE BUILDING TRADES AND TO COMPLY WITH ALL LOCAL CODES. EXACT LINE RUNS OF REFRIGERATION PIPING SHALL BE DETERMINED IN COORDINATION WITH THE REFRIGERATION INSTALLER.

ALL ELECTRICAL DISCONNECTS TO BE PROVIDED BY OTHERS.



**FREDDY'S FROZEN CUSTARD AND STEAKBURGERS**  
SEVIERVILLE, TN

PROJECT NUMBER: 2022053

DATE: 03.03.2022

SCALE: 1/4" = 1'-0"

DRAWN BY: SDS APPROVED BY: ABR

**EQUIPMENT LAYOUT PLAN**

SHEET NUMBER: QF100