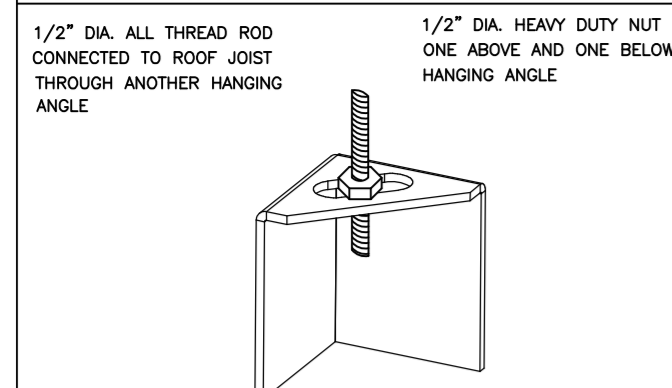


ND-2 HANGING ANGLE DETAIL



*ROD AND NUTS TO BE SUPPLIED BY INSTALLING CONTRACTOR
HANGING ANGLE IS PRE-FINISHED AT FACTORY

HANGING ANGLE LOCATIONS

HOOD STYLE	DIM FROM REAR	DIM FROM FRONT (24\"/>	
CANOPY ND2	4.166"	2.246"	2.246"
ND2-PSP-F	4.166"	2.246"	2.246"
BACKSHELF BD-2	4.166"	2.246"	-
VHB/VHB-G	36"X36"	42"X42"	48"X48"
FRONT/BACK DIMS BY SIZE	2.246"	2.246"	2.246"

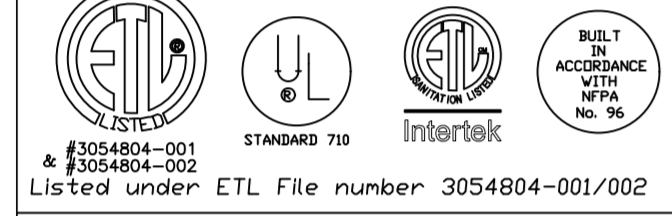
CALCULATIONS UTILIZED

EXHAUST CFM=LENGTH OF HOOD X CFM/LIN.FT. (LOAD)
SUPPLY CFM=EXHAUST CFM X PERCENTAGE REQUIRED
TOTAL DUCT AREA=144 X _____ CFM _____ FPM*
DUCT LENGTH= _____ DUCT DEPTH

*CAPTIVE-AIRE DUCT CONNECTION SIZES ARE CALCULATED USING AN EXHAUST VELOCITY OF 1500-1800 FPM AND A SUPPLY VELOCITY OF 300-400 FPM

BUILDING CODES

CAPTIVE-AIRE HOODS ARE BUILT IN COMPLIANCE WITH:



Listed under ETL File number 3054804-001/002

CLEARANCE TO COMBUSTIBLES

CAPTIVE-AIRE HOODS HAVE OPTIONAL CLEARANCE REDUCTION SYSTEMS AVAILABLE AS FOLLOWS:

MATERIAL	CLEARANCE REDUCTION SYSTEM
NON-COMBUSTIBLE	NONE REQUIRED
LIMITED-COMBUSTIBLE	3" UNINSULATED STANDOFF
COMBUSTIBLE	1" INSULATED STANDOFF

GENERAL NOTES

INSTALLATION

- ALL ELECTRICAL "FIELD" CONNECTIONS AND RELATED INTERCONNECTIONS BY ELECTRICAL CONTRACTORS.
- ALL PLUMBING "FIELD" CONNECTIONS AND RELATED INTERCONNECTIONS BY PLUMBING CONTRACTORS.
- HANGING BRACKETS LOCATED AND WELDED AS SHOWN ON PLANS. ALL OTHER HANGER MATERIALS PROVIDED BY INSTALLING CONTRACTORS.
- ALL CONNECTIONS FROM CAPTIVE-AIRE DUCT PER MECHANICAL CONTRACTORS' PLANS.
- COOKING EQUIPMENT TO SHUTOFF IN EVENT OF FIRE.
- EXHAUST FANS TO TURN ON IN EVENT OF FIRE.
- ALL LIGHTS FIXTURE SHOWN INSTALLED BY CAPTIVE-AIRE ARE FACTORY PREWIRED. INTERCONNECTIONS BETWEEN HOODS AND TO SWITCHES BY ELECTRICAL CONTRACTORS.
- LAMPS FOR LIGHT FIXTURES BY INSTALLING CONTRACTORS.
- SEISMIC RESTRAINTS ARE RESPONSIBILITY OF INSTALLING CONTRACTOR.
- INSTALLING CONTRACTORS ASSUME ALL RELATED RESPONSIBILITY FOR VERIFICATION OF DIMENSIONAL DATA CONTAINED ON THESE DOCUMENTS FOR ACCURACY, INTEGRATION, AND ADMINISTRATION OF CODE REQUIREMENTS IN EFFECT PRIOR TO ANY RELEASE FOR PRODUCTION OF EQUIPMENT SHOWN.

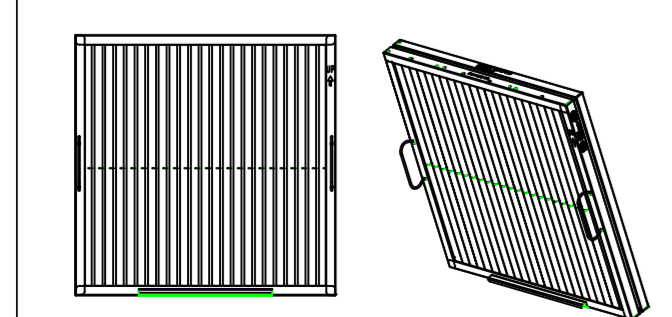
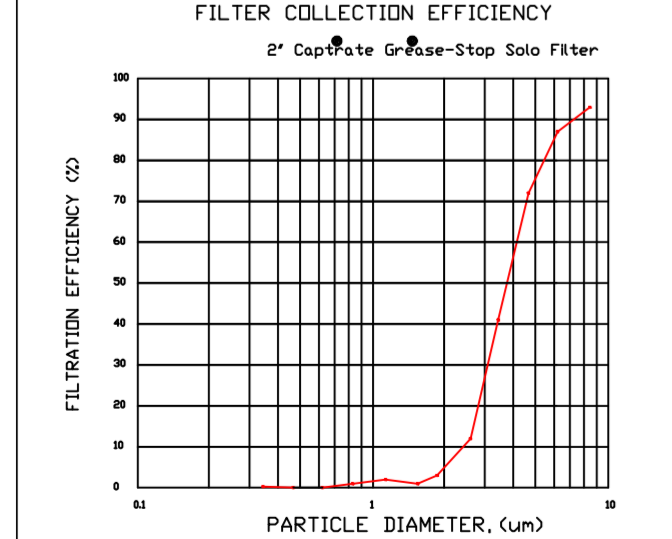
BALANCE

- KITCHEN HOODS MUST BE BALANCED WITH KITCHEN.
- KITCHEN SHALL BE NEGATIVE WITH RESPECT TO DRINK AREA.
- RESTAURANT SHALL BE POSITIVE WITH RESPECT TO AMBIENT PRESSURE.

ADDITIONAL

- WRITTEN HOOD DIMENSIONS HAVE PRECEDENCE OVER SCALE.
- SIGNED AND "APPROVED" COPIES OF THIS DOCUMENT MUST BE RECEIVED BY THE FACTORY PRIOR TO COMMENCEMENT OF FABRICATION.

FILTER DETAIL



CaptiveAire Captrate Solo Filter
ETL Listed Grease Extracting Filter
Made From 430 Stainless Steel

HOOD INFORMATION - JOB#4845619

HOOD NO	TAG	MODEL	MANUFACTURER	LENGTH	MAX COOKING TEMP	TYPE	APPLIANCE DUTY	DESIGN CFM/FT	TOTAL EXH CFM	EXHAUST PLENUM (RISERS)				HOOD CONSTRUCTION	HOOD CONFIG END TO END	ROW	
										WIDTH	LENG	HEIGHT	SP				
1	ITEM 33A	5424 ND-2	CAPTIVEAIRE	8' 0"	450 DEG	I	MEDIUM	200	1600	4'	14'	1600	1497	-0.734'	430 SS WHERE EXPOSED	ALDNE	FRONT
2	ITEM 33B	5424 ND-2	CAPTIVEAIRE	5' 0"	450 DEG	I	MEDIUM	155	775	4'	10'	775	1421	-0.436'	430 SS WHERE EXPOSED	ALDNE	ALDNE
3	ITEM 10.1	4224 VHB-G	CAPTIVEAIRE	3' 6"	700 DEG	II	N/A	150	525	4'	10'	525	963	-0.069'	304 SS 100%	ALDNE	ALDNE

HOOD OPTIONS

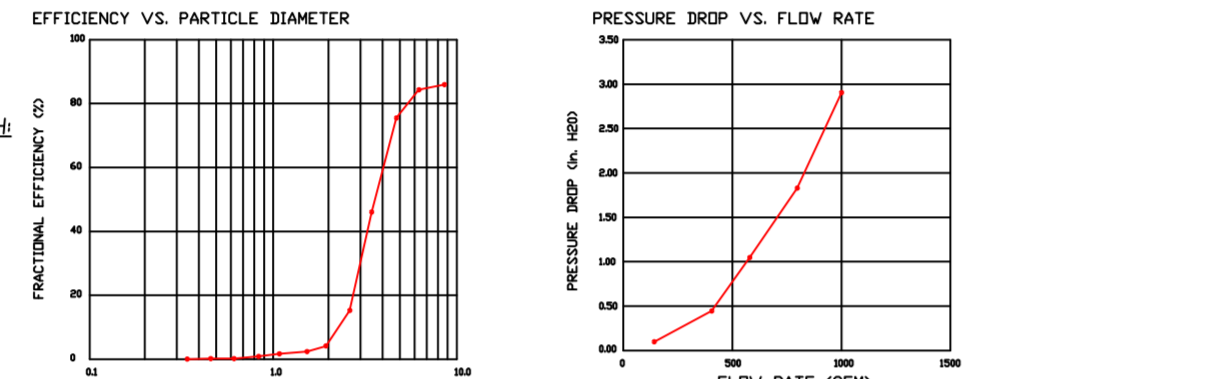
HOOD NO	TAG	TYPE	FILTER(S)		LIGHT(S)		UTILITY CABINET(S)			FIRE SYSTEM	ELECTRICAL	SWITCHES	FIRE SYSTEM HANGING PIPING	HOOD WEIGHT	
			QTY	HEIGHT	LENGTH	EFFICIENCY @ 7 MICRONS	QTY	TYPE	WIRE GUARD						LOCATION
1	ITEM 33A	CAPTRATE SOLID FILTER	5	16"	16"	95% SEE FILTER SPEC	2	RECESSED	NO	LEFT	12"X54"X24"	DCV-2011	1 LIGHT 1 FAN	NO	513 LBS
2	ITEM 33B	CAPTRATE SOLID FILTER	3	16"	16"	95% SEE FILTER SPEC	2	RECESSED	NO					NO	310 LBS
3	ITEM 10.1													NO	163 LBS

HOOD OPTIONS

HOOD NO	TAG	FIELD WRAPPER	18.00" HIGH	FRONT, LEFT, RIGHT
1	ITEM 33A	LEFT QUARTER END PANEL	23" TOP WIDTH, 0" BOTTOM WIDTH, 23" HIGH	430 SS.
		RIGHT QUARTER END PANEL	27" TOP WIDTH, 0" BOTTOM WIDTH, 23" HIGH	430 SS.
		RISER SENSOR INSTALL	3IN DBL.	
2	ITEM 33B	FIELD WRAPPER	18.00" HIGH	FRONT, LEFT, RIGHT.
		RIGHT END PANEL	27" TOP WIDTH, 24" BOTTOM WIDTH, 39.5" HIGH	430 SS.
		LEFT QUARTER END PANEL	23" TOP WIDTH, 0" BOTTOM WIDTH, 23" HIGH	430 SS.
		RISER SENSOR INSTALL	3IN DBL.	
3	ITEM 10.1	FIELD WRAPPER	18.00" HIGH	FRONT, LEFT, RIGHT.

SPECIFICATION: CAPTRATE GREASE-STOP SOLID FILTER

THE CAPTRATE GREASE-STOP SOLID FILTER IS A SINGLE-STAGE FILTER FEATURING A UNIQUE S-BAFFLE DESIGN IN CONJUNCTION WITH A SLOTTED REAR BAFFLE DESIGN, TO DELIVER EXCEPTIONAL FILTRATION EFFICIENCY.
FILTER IS STAINLESS STEEL CONSTRUCTION, AND SIZED TO FIT INTO STANDARD 2-INCH DEEP HOOD CHANNELS(S).
UNITS SHALL INCLUDE STAINLESS STEEL HANDLES AND A FASTENING DEVICE TO SECURE THE TWO COMPONENTS WHEN ASSEMBLED.
GREASE EXTRACTION EFFICIENCY PERFORMANCE SHALL REMOVE AT LEAST 75% OF GREASE PARTICLES FIVE MICRONS IN SIZE, AND 85% GREASE PARTICLES SEVEN MICRONS IN SIZE AND LARGER, WITH A CORRESPONDING PRESSURE DROP NOT TO EXCEED 10 INCHES OF WATER GAUGE.
THE CAPTRATE GREASE-STOP SOLID WAS TESTED TO ASTM STANDARD ASTM F2539-05 MANUFACTURER APPROVED FOR USE IN SOLID FUEL APPLICATIONS AS A SPARK ARRESTER.
EFFICIENCY VS. PARTICLE DIAMETER

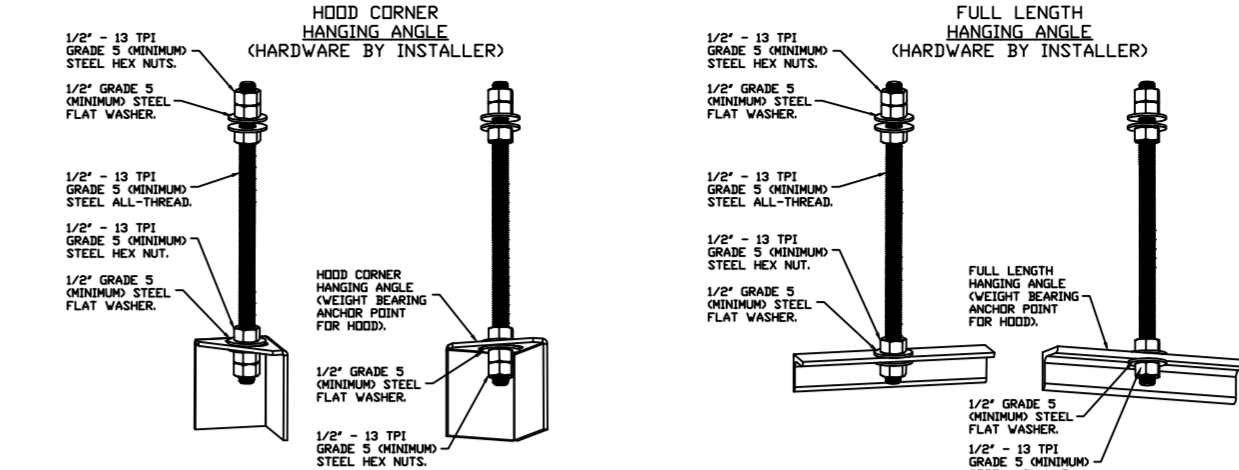


CAPTRATE FILTERS ARE BUILT IN COMPLIANCE WITH:
NFPA #96
NSF STANDARD #2
UL STANDARD #1046
INT. MECH. CODE (IMC).
ULC-5645.



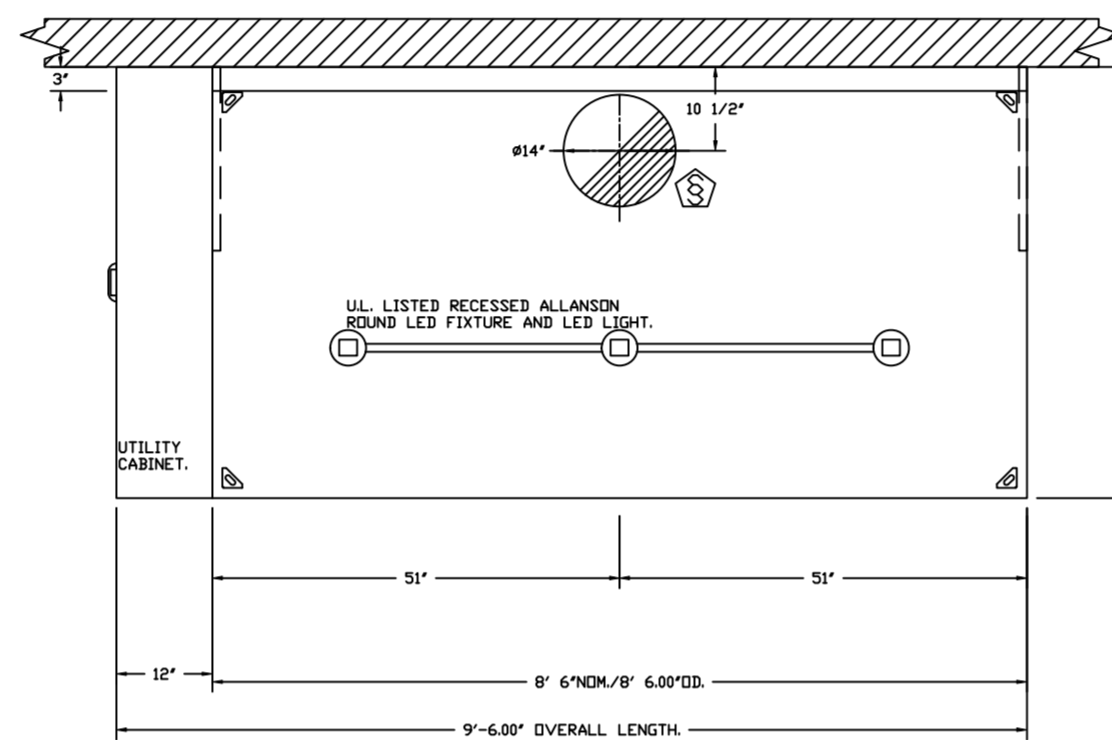
PATENT NUMBERS

EXHAUST HOODS ND-2/BD-2/SND-2 (CANADA) - CA PATENT 2520435 C.

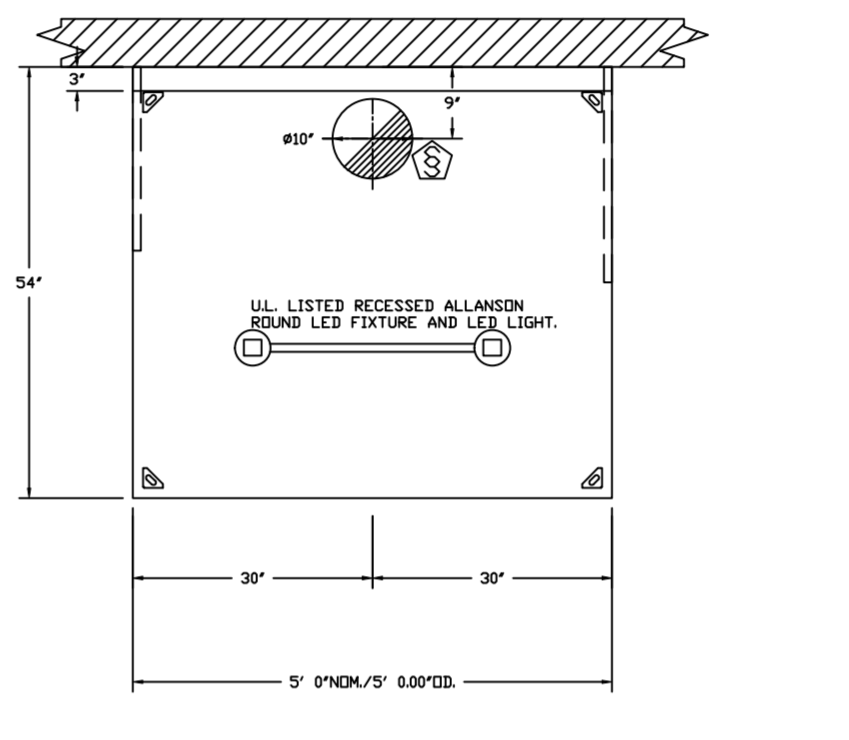


ASSEMBLY INSTRUCTIONS

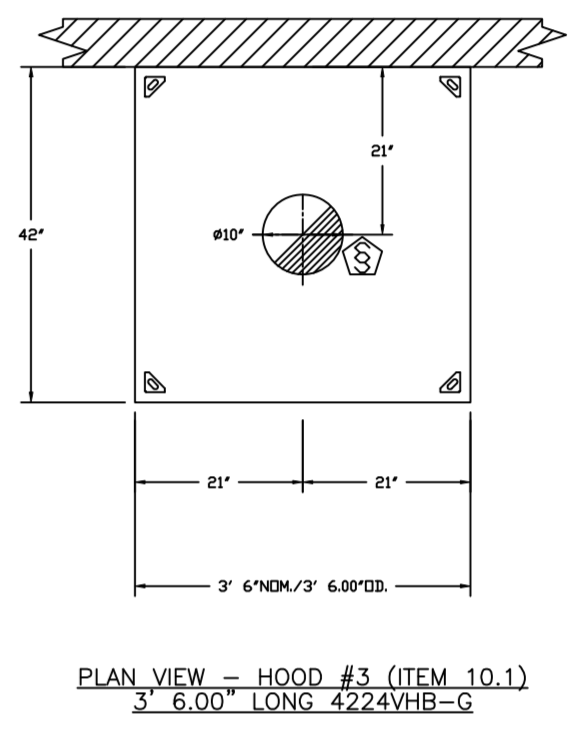
HANGING ANGLE MUST BE SUPPORTED WITH 1/2" - 13 TPI GRADE 5 (MINIMUM) ALL-THREAD. SANDWICH HANGING ANGLES AND CEILING ANCHOR POINTS WITH 1/2" GRADE 5 (MINIMUM) STEEL FLAT WASHERS AND 1/2" - 13 TPI GRADE 5 (MINIMUM) HEX NUTS AS SHOWN. MUST USE DOUBLED HEX NUT CONFIGURATION BENEATH HOOD HANGING ANGLES AND ABOVE CEILING ANCHORS. MAINTAIN 1/4" OF EXPOSED THREADS BENEATH BOTTOM HEX NUT. TORQUE ALL HEX NUTS TO 57 FT-LBS.



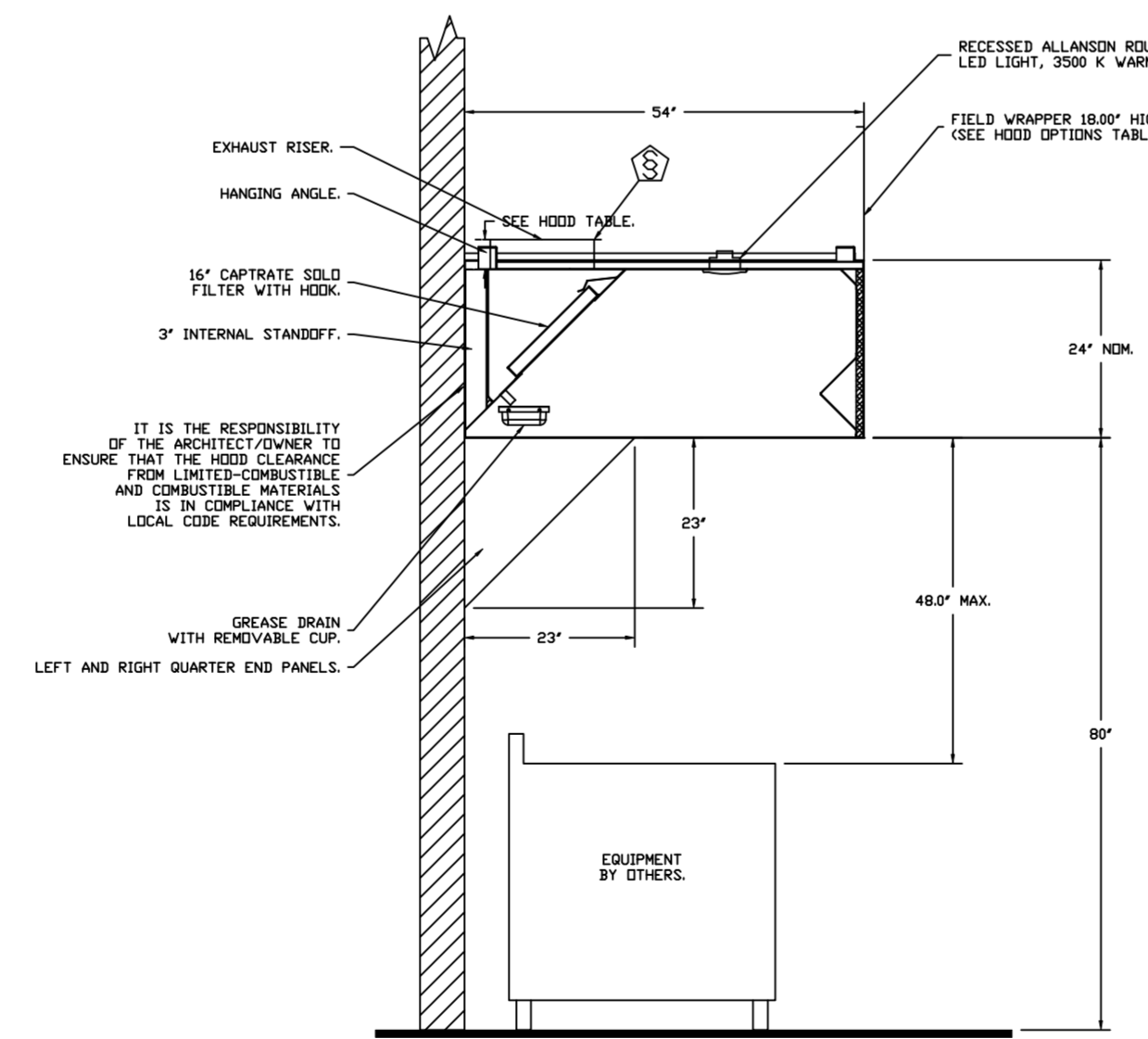
PLAN VIEW - HOOD #1 (GRIDDLE HD)
9' 6.00" LONG 5424ND-2



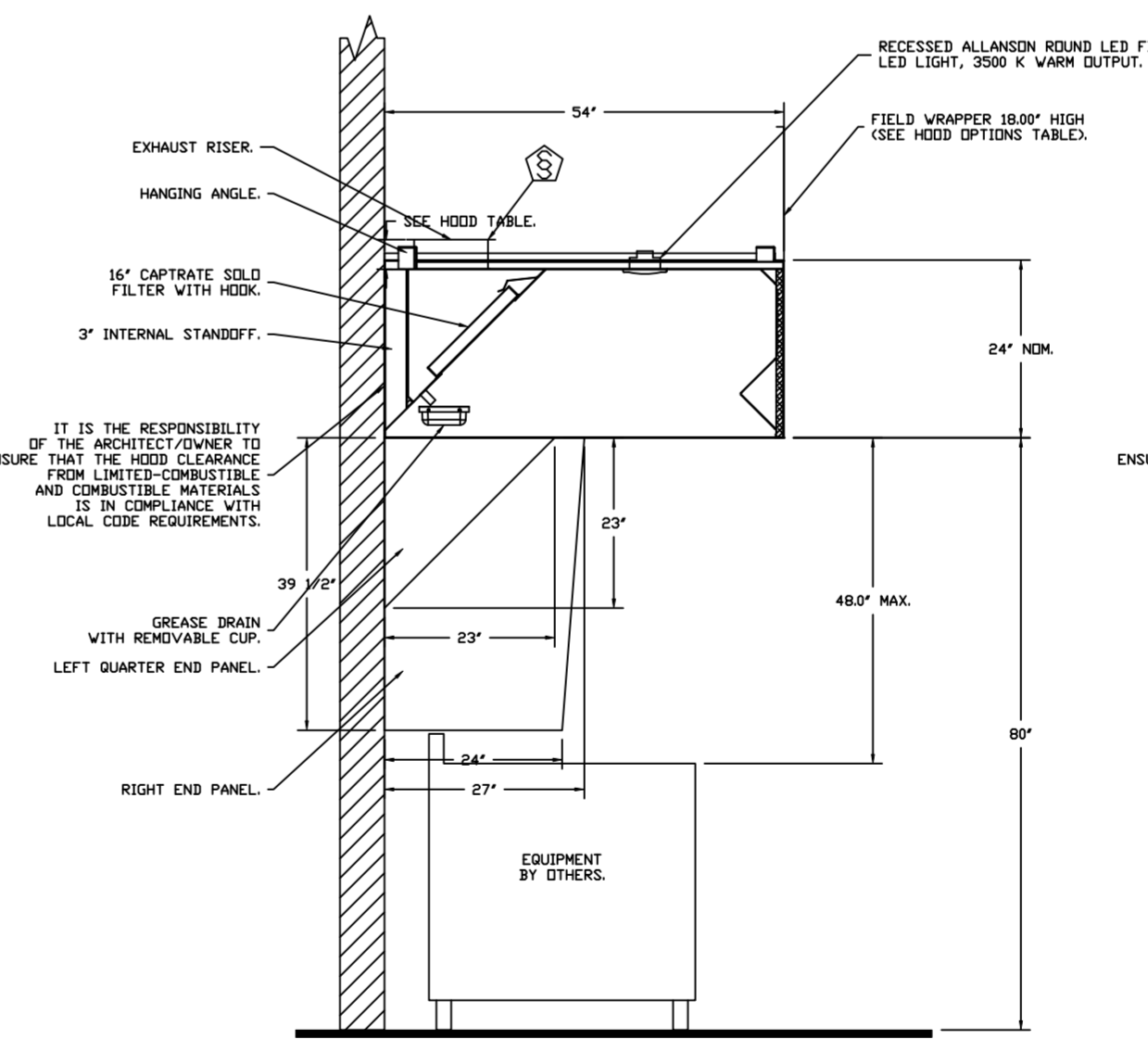
PLAN VIEW - HOOD #2 (FRY HD)
5' 0.00" LONG 5424ND-2



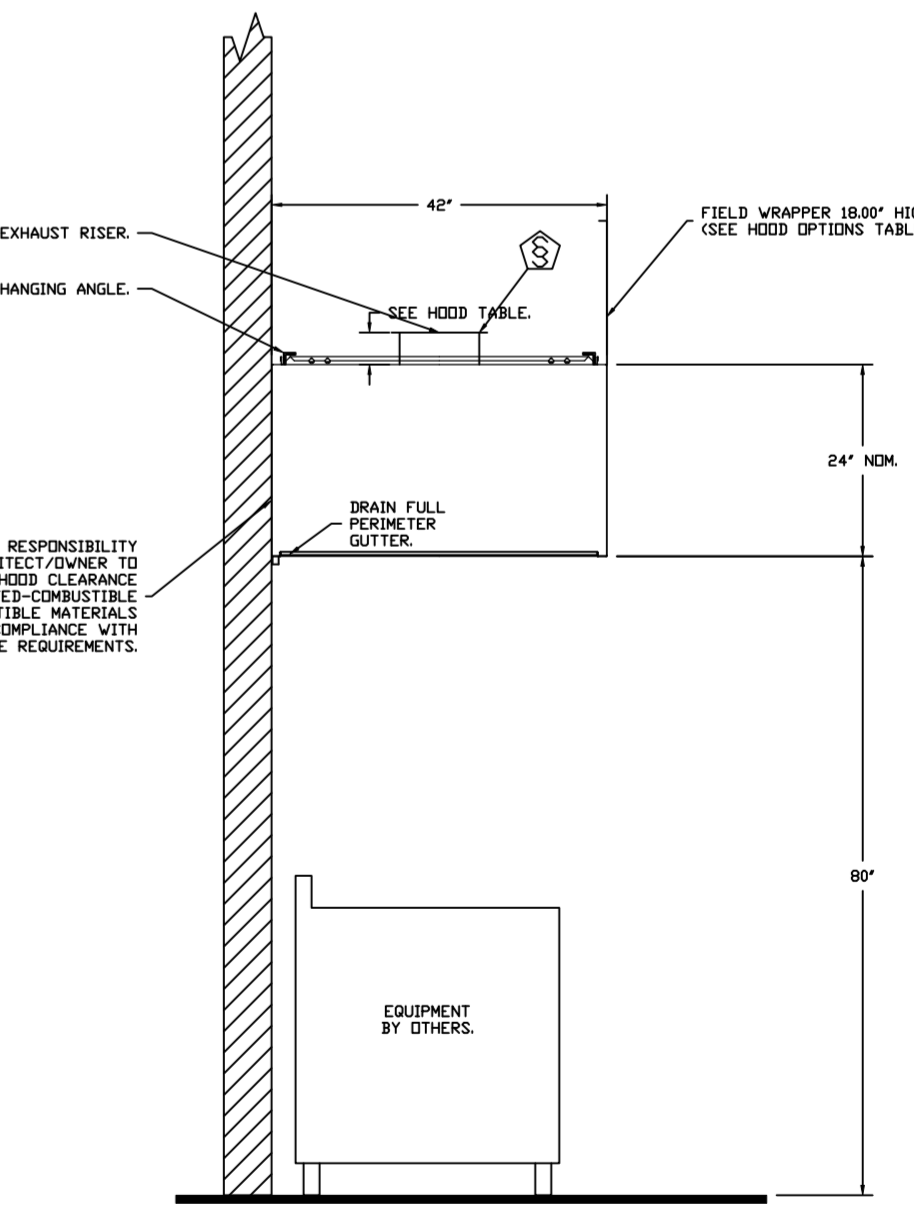
PLAN VIEW - HOOD #3 (ITEM 10.1)
3' 6.00" LONG 4224VHB-G



SECTION VIEW - MODEL 5424ND-2
HOOD - #1 (GRIDDLE HD)



SECTION VIEW - MODEL 5424ND-2
HOOD - #2 (ITEM 33B)



SECTION VIEW - MODEL 4224VHB-G
HOOD - #3 (ITEM 10.1)

FOR QUESTIONS, CALL THE:
KANSAS CITY REGIONAL OFFICE
1126 SWIFT STREET, KANSAS CITY, MO 64116
PHONE: (816) 221-8575
FAX: (816) 221-8311

CUSTOMER APPROVAL TO MANUFACTURE:

Approved as Noted
Approved with NO Exception Taken
Revise and Resubmit
SIGNATURE _____ DATE _____
Your Title _____

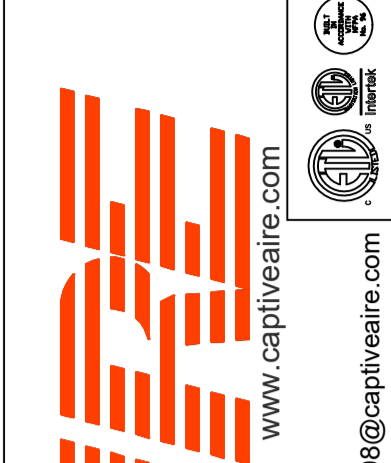
***** NOTE *****
ALL WALLS AND STRUCTURES THAT COME WITHIN 18" OF HOOD MUST BE METAL STUDS AND SHEETROCK. WOOD STUDS OR ANY OTHER COMBUSTIBLE MATERIAL WITHIN 18" OF HOOD NO ALLOWED.

***** NOTE *****
HOOD MANUFACTURER RECOMMENDS NO RETURNS OR 4-WAY DIFFUSERS WITHIN 10 FEET OF HOOD IN ALL DIRECTION.

***** NOTE *****
MAKEUP AIR SHALL BE DELIVERED INTO SPACE IN MANNER THAT WILL NOT DISRUPT HOODS ABILITY TO CAPTURE AND CONTAIN.

REVISIONS

DESCRIPTION	DATE:



CAPTIVEAIRE
HBT Foodservice
104 W 8th St Suite 204, Kansas City, MO, 64105 PHONE: (816) 221-8575 FAX: (816) 221-8311 EMAIL: reg9@captivaire.com
www.captivaire.com

Freddy's - LaGrange, GA
LAGRANGE, GA, 30240

DATE: 4/15/2021.

DWG.#:
4845619

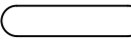
DRAWN BY: michael.co

SCALE:
1/2" = 1'-0"

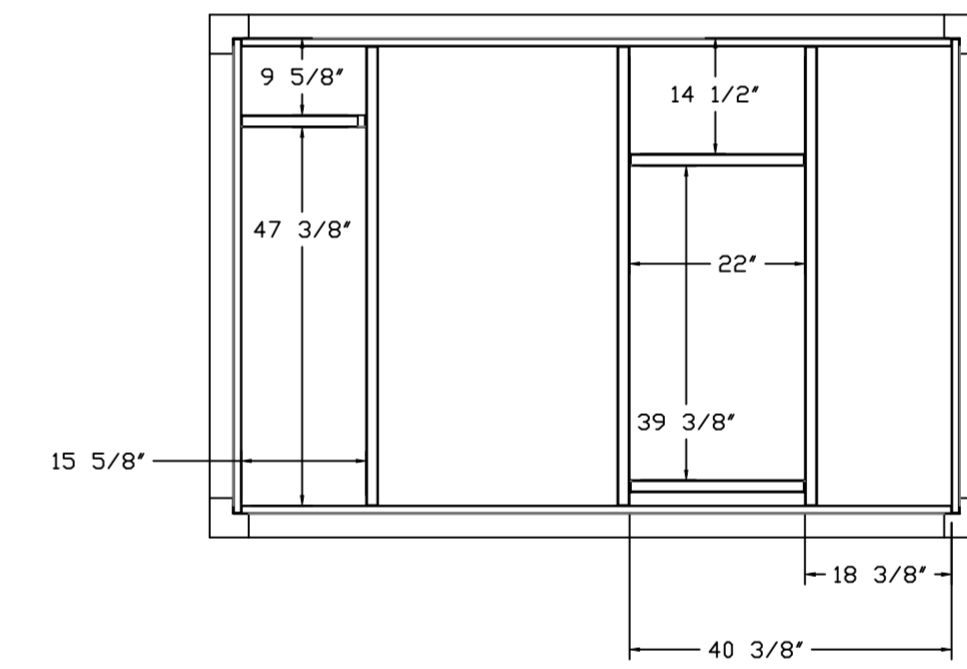
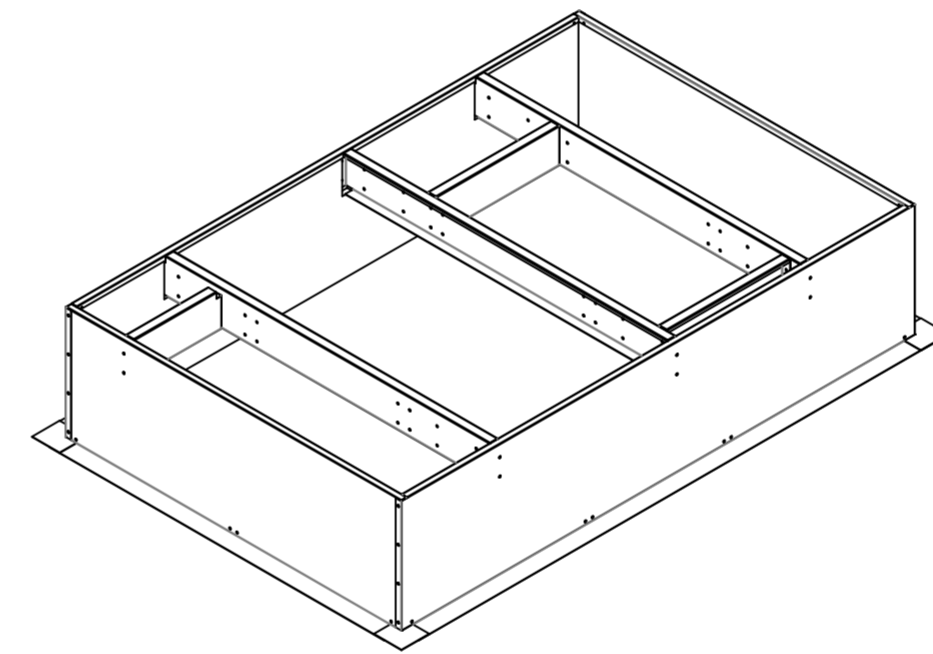
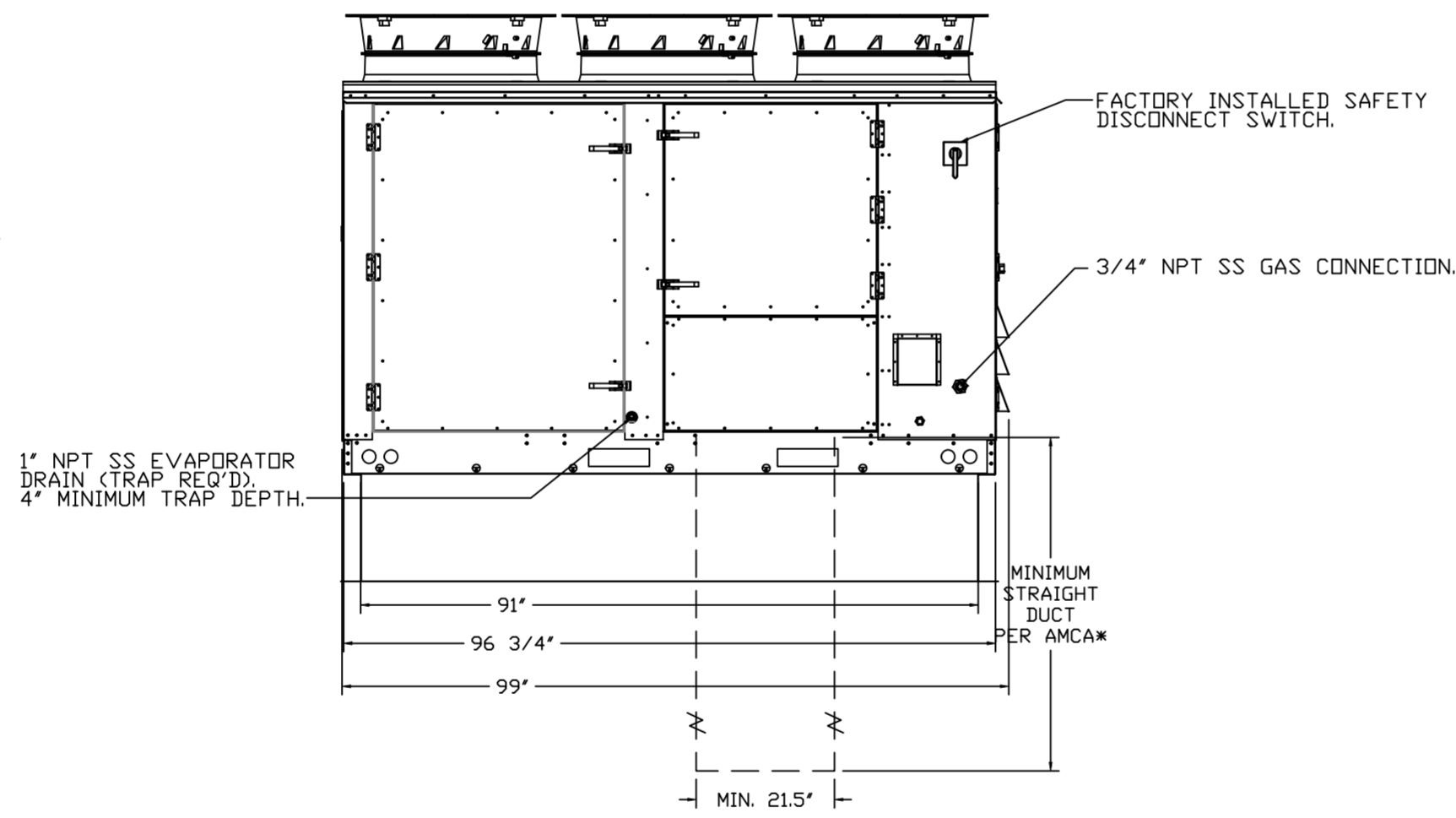
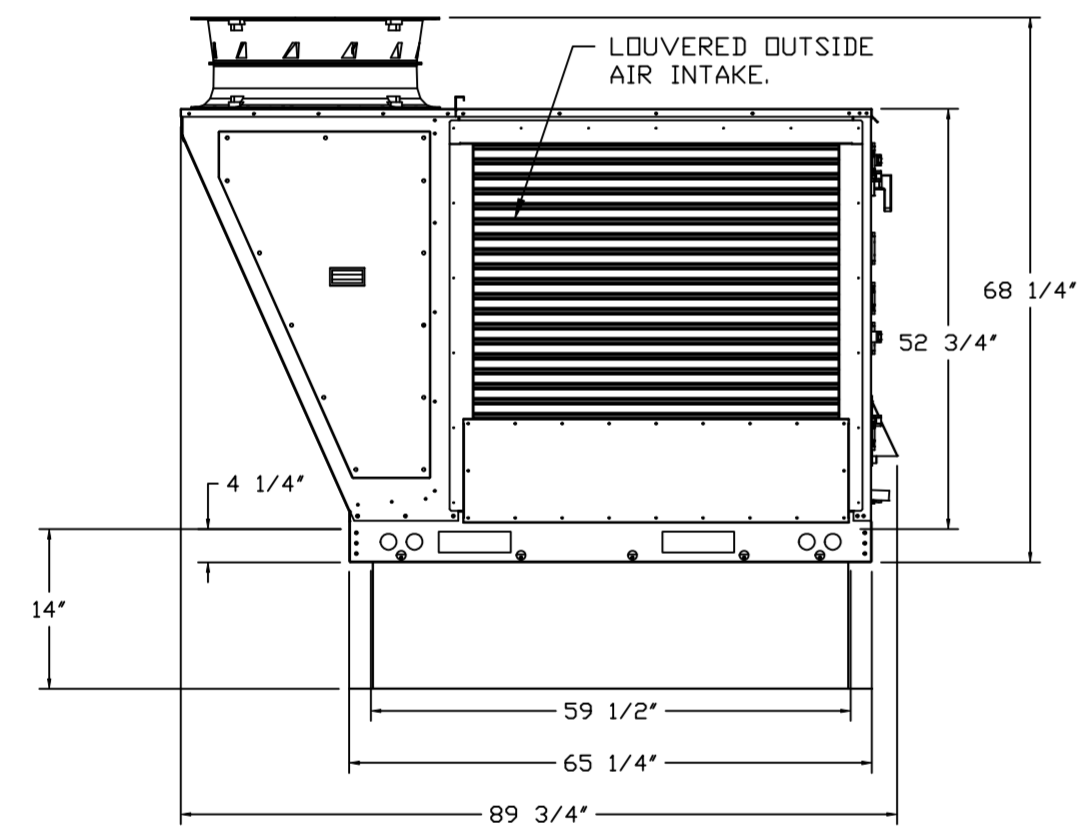
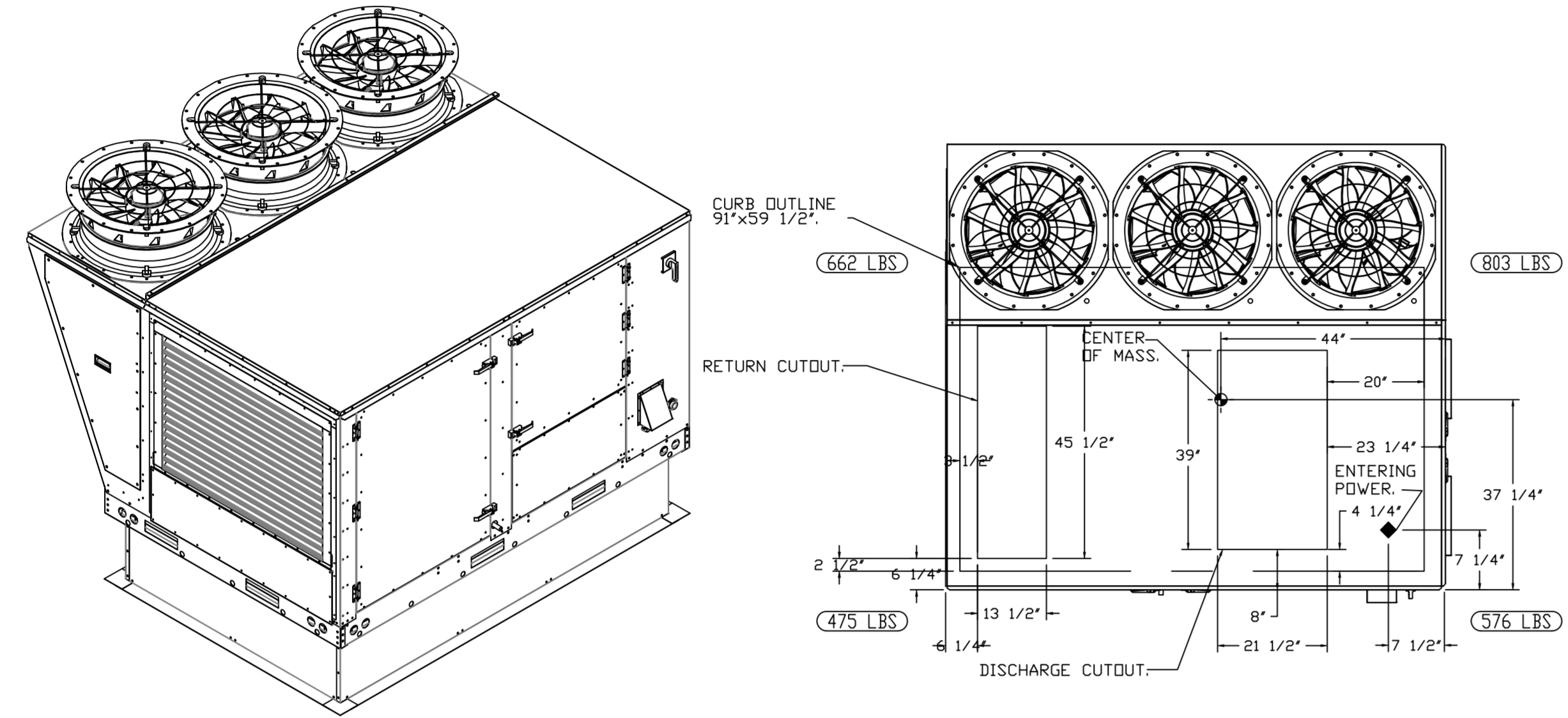
MASTER DRAWING

SHEET NO.
1

NOTES:

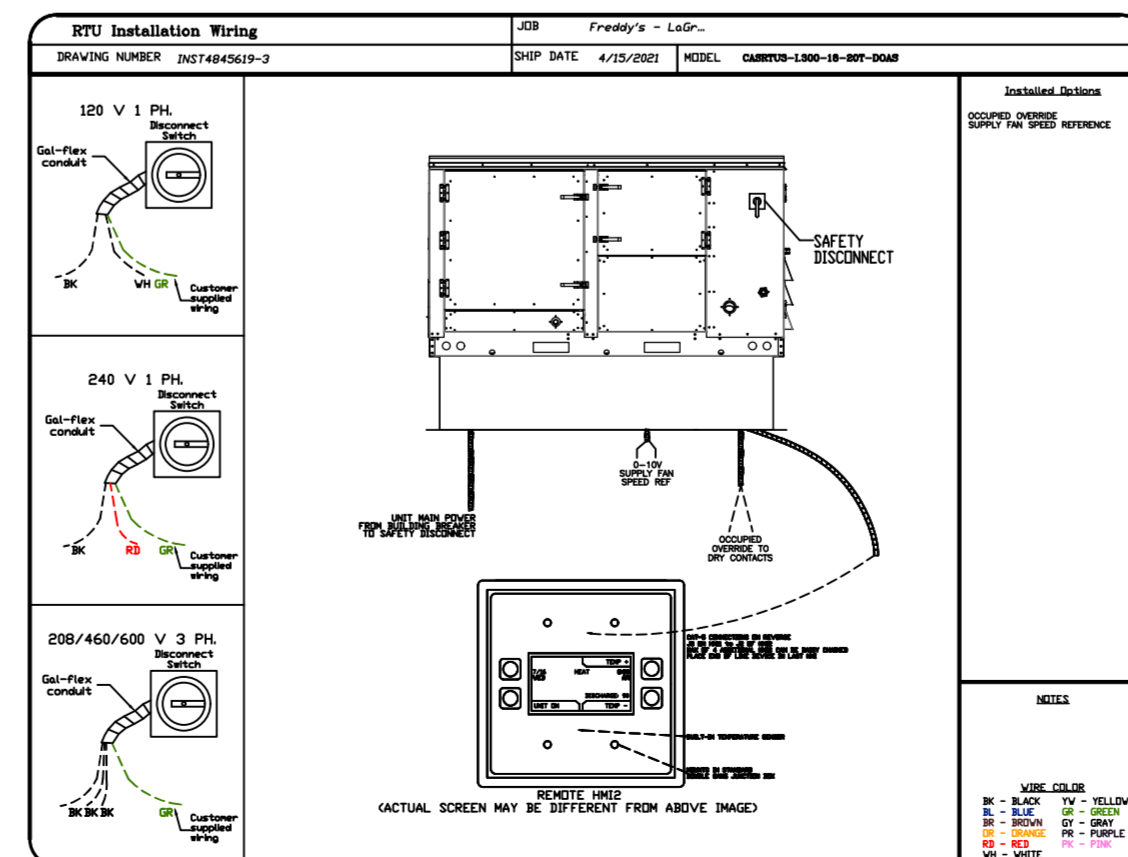
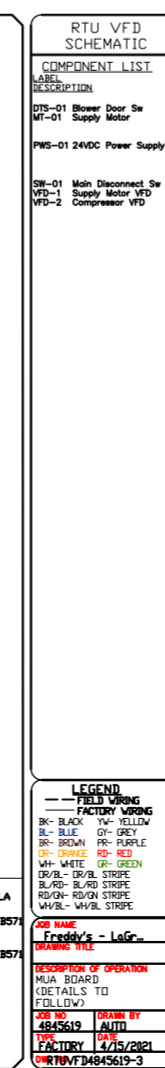
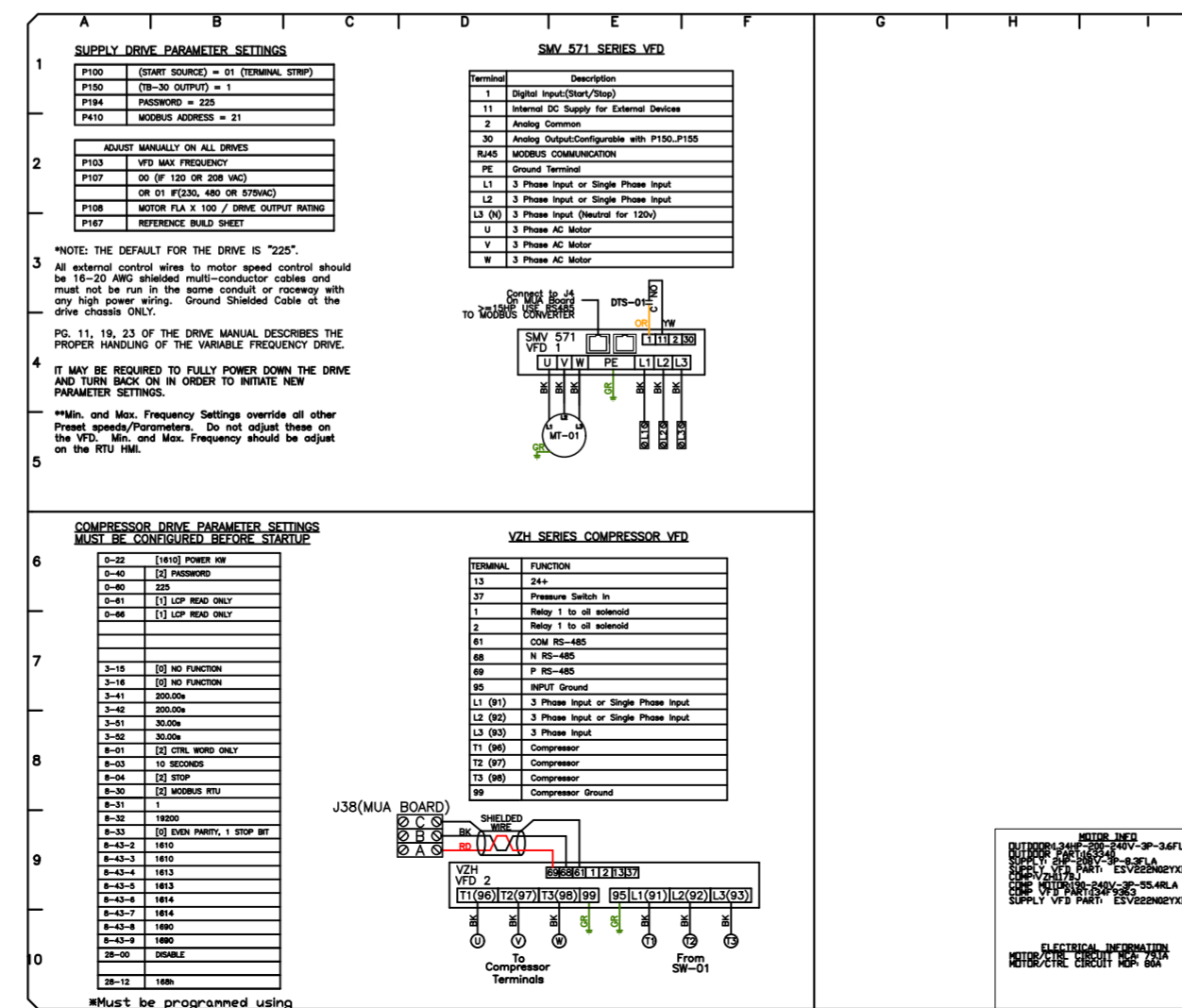
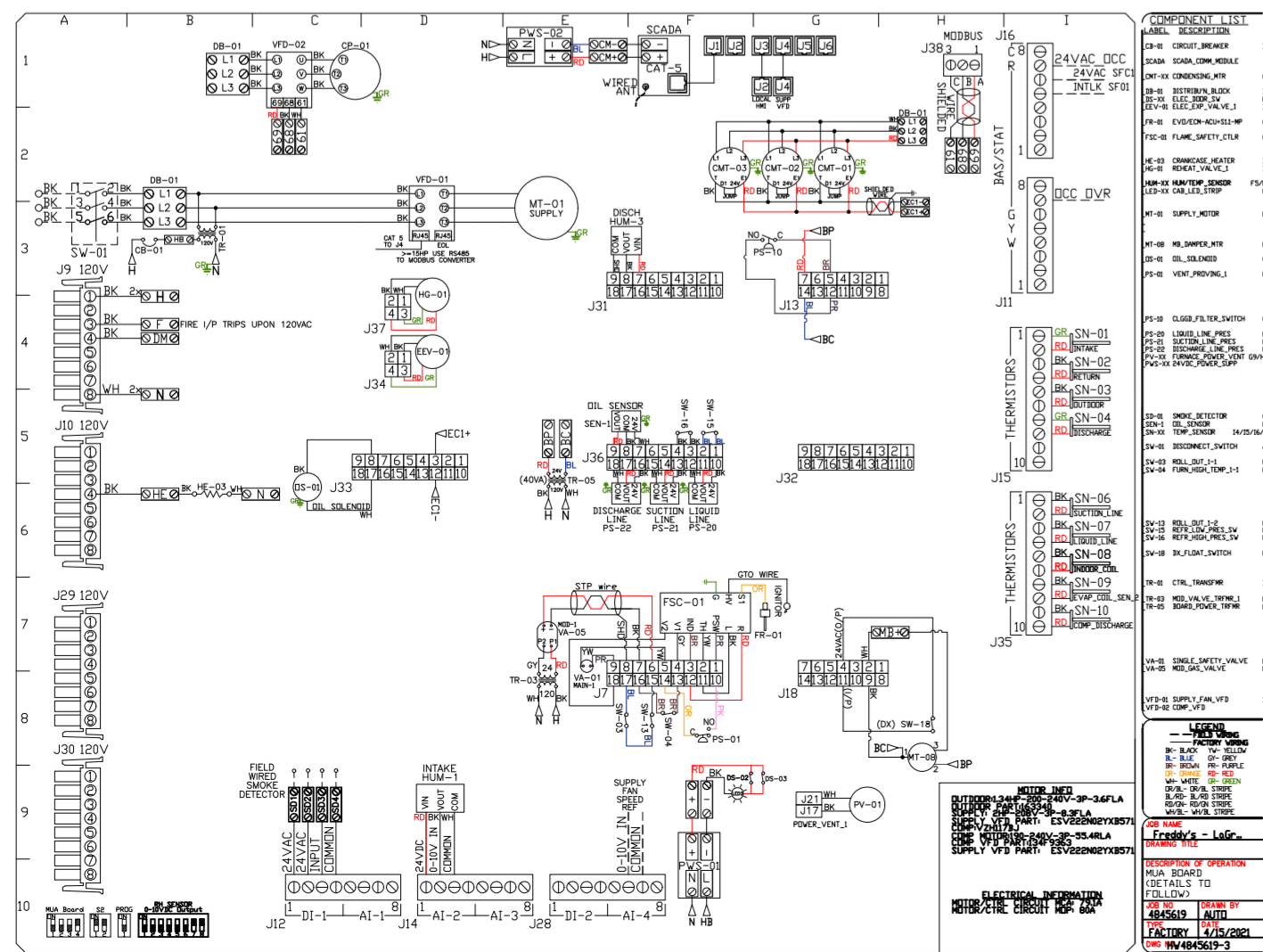
- DO NOT OBSTRUCT OUTSIDE AIR INLET, OUTSIDE AIR COIL OR OUTSIDE AIR FAN.
-  DENOTES CORNER WEIGHT.
- ROOF OPENING MUST BE 2' SMALLER THAN CURB DIMENSIONS IN BOTH DIRECTIONS.

*NOTE: SUPPLY DUCT MUST BE INSTALLED TO MEET SMACNA STANDARDS. A MINIMUM STRAIGHT DUCT LENGTH MUST BE MAINTAINED DOWNSTREAM OF UNIT DISCHARGE AS OUTLINED IN AMCA PUBLICATION 201. WHEN USING RECTANGULAR DUCTWORK, ELBOWS MUST BE RADIUS THROAT, RADIUS BACK WITH TURNING VANES. FLEXIBLE DUCTWORK AND SQUARE THROAT/SQUARE BACK ELBOWS SHOULD NOT BE USED. ANY TRANSITION AND/OR TURNS IN THE DUCTWORK WILL CAUSE SYSTEM EFFECT. SYSTEM EFFECT WILL DRASTICALLY INCREASE STATIC PRESSURE AND REDUCE AIRFLOW. DO NOT RELY ON UNIT TO SUPPORT DUCT IN ANY WAY. FAILURE TO PROPERLY SIZE DUCTWORK MAY CAUSE SYSTEM EFFECTS AND REDUCE PERFORMANCE OF THE EQUIPMENT. SUGGESTED STRAIGHT DUCT SIZE IS 21.5" x 39".



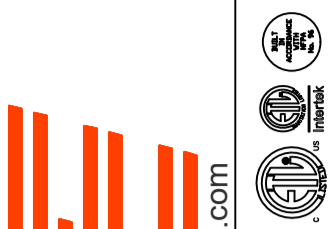
OPTIONS

- SINGLE POINT ELECTRICAL CONNECTION FOR RTU. QNTY 1 750VA TRANSFORMER USED. IF A NON-DCV PREWIRE CONTROLS THIS UNIT, THE #28, #47, "MA", OR "E2" OPTION PREWIRE MUST BE SELECTED. DO NOT PROVIDE SUPPLY STARTER IN PREWIRE.
- CASLINK BUILDING MONITORING SYSTEM - INTERNET OR CELLULAR CONNECTION REQUIRED.
- RTU SIZE 3 DOWN DISCHARGE.
- 2" MERV 13 FILTERS FOR SIZE 3 RTU. QTY 4.
- 2" MERV 8 FILTERS FOR SIZE 3 RTU. QTY 4.
- OVERHEAT STAT.
- TOTAL CFM MONITORING FOR DOAS.
- VFD FACTORY MOUNTED AND WIRED IN COMMERCIAL CONTROL VESTIBULE FOR RTU.
- INLET PRESSURE GAUGE, 0-35".
- MANIFOLD PRESSURE GAUGE, 0 TO 10" WC, 1 FURNACE.
- COMMERCIAL SMOKE DETECTOR/ALARM INTERLOCK (SUPPLIED BY OTHERS).
- OCCUPIED SCHEDULING.
- SIZE 3 RTU CURB DUCT HANGER.
- CLOGGED FILTER SWITCH WITH NOTIFICATION ON HMI.
- 20 TON MODULATING COOLING OPTION, 208/230V. R410A REFRIGERANT, VARIABLE SPEED COMPRESSOR, ECM CONDENSING FAN(S).
- 20 TON MODULATING REHEAT OPTION. DISCHARGE DEWPOINT CONTROL.
- RTU SCHEDULED OA PERCENTAGE INTAKE/RETURN DAMPER CONTROL.
- RTU 3 HAIL GUARD.
- RTU SIZE 3 DOWN RETURN.
- VAV PACKAGE W/ 0-10VDC INPUT CONTROL (571 VFD INCLUDED).
- 5 YEAR ENTIRE UNIT PARTS WARRANTY, 10 YEAR ENTIRE UNIT PARTS WARRANTY WITH REMOTE MONITORING AND CAPTIVEAIRE SERVICE CONTRACT, 25 YEAR STAINLESS STEEL FURNACE PARTS WARRANTY (SEE ADDITIONAL DETAILS).



REVISIONS

DESCRIPTION	DATE



www.captiveaire.com
www.captiveaire.com

104 W 8th St Suite 204, Kansas City, MO, 64105 PHONE: (816) 221-8575 FAX: (816) 221-8311 EMAIL: reg9@captivaire.com

HBT Foodservice

CAPTIVE AIR

Freddy's - LaGrange, GA
LAGRANGE, GA, 30240

DATE: 4/15/2021.

DWG.#:
4845619

DRAWN BY: michael.co

SCALE:
1/2" = 1'-0"

MASTER DRAWING

SHEET NO.

3

DUCTWORK #1 PARTS - JOB#4845619 GRIDDLE

TAG	PART #	CFM	GPM	ZONE	COVEREDBY	SP	WEIGHT	VELOCITY	QTY	DESCRIPTION
P1	DW1490ASY	1600					-0.112	10.62	1496.71	1 SINGLE WALL DUCT 90 DEGREE ELBOW, 14" DUCT, ASSEMBLY.
P2	DW1435LT	1600					-0.0115	16.34	1496.71	1 SINGLE WALL DUCT 14" DIAMETER, 35" LONG, FLANGE AT BOTH ENDS. STAINLESS STEEL.
P3	DW1448AJDKIT	1600					-0.0095	26.62	1496.71	1 SINGLE WALL DUCT ADJUSTABLE, 14" DIAMETER, 47.5" LONG, FLANGE AT ONE END WITH A 14" ADJUSTABLE COLLAR - STAINLESS STEEL.
P4	ASSEMBLED W/P5	DW14TEASY	1600		1		-0.0896	15.95	1496.71	1 SINGLE WALL DUCT TEE, 14" DUCT, ASSEMBLY.
P5	ASSEMBLED W/P4 D-S	DW1415ADIASY						13.89		1 DUCT ACCESS DOOR - INSULATED - USED WITH 14" DUCT - GREASE DAM INCLUDED - ASSEMBLY.
P6	DW1435LT	1600					-0.0115	16.34	1496.71	1 SINGLE WALL DUCT 14" DIAMETER, 35" LONG, FLANGE AT BOTH ENDS. STAINLESS STEEL.
P7	ASSEMBLED W/P8	DW1448AJDKIT	1600				-0.0105	26.62	1496.71	1 SINGLE WALL DUCT ADJUSTABLE, 14" DIAMETER, 47.5" LONG, FLANGE AT ONE END WITH A 14" ADJUSTABLE COLLAR - STAINLESS STEEL.
P8	ASSEMBLED W/P7	DW23514TP	1600					12.00	1496.71	1 DUCT TO CURB TRANSITION, 23.50" CURB TO 14" DUCT, 16 GA ALUMINIZED MISC. NON-STANDARD TRANSITION PLATE.
SYSTEM AT P8								-0.9786	0.00	
P9	DW14VESUB							22.58		1 DUCT VERTICAL SUPPORT KIT, 14" DUCT, 18" CLEARANCE TO COMBUSTIBLES. PARTS ARE ZINC COATED. HARDWARE KIT #3 USED ON DWXXVESU & DWXXVESUB.
P10	DW14SUBRASY							2.96		1 DUCT SUPPORT BRACKET KIT, 14" DUCT, USED FOR HANGING DUCT. 12 GA STEEL, CLEAR ZINC COATING. - 2 RINGS, 4 BRACKETS, & HARDWARE BAG 2.
	3M-2000PLUS							0.80	2	DUCT - 3M FIRE BARRIER 2000 PLUS SILICONE - USED AS SEALANT TO SEAL DUCT JOINTS.
	834680600587XL							52.00	3	DUCT - DUCT INSULATION FOR ZERO CLEARANCE TO COMBUSTIBLES - 300" X 24" X 1-1/2" ROLL. PYROSCAT WRAP.
	BANDINGS							5.00	2	DUCT - FIRE BARRIER WRAP STAINLESS STEEL BANDING .5" WIDTH - 200 FT PER ROLL.
	DW14CLASY							1.06	7	DUCT - V" CLAMP WITH NEW DESIGN 14 GA BRACKETS, 14" DUCT, ASSEMBLY.
	SEAL-50-50							0.50	2	DUCT - FIRE BARRIER WRAP STAINLESS STEEL BANDING SEAL .5" WIDTH. QUANTITY OF 50.
	TAPEALUM							0.25	2	DUCT - FIRE BARRIER WRAP ALUMINUM FOIL TAPE - 3" X 150' ROLL.
TOTAL WEIGHT								444.44		

SINGLE WALL FACTORY BUILT DUCTWORK

- ALL DUCTWORK IS REQUIRED TO BE INSTALLED WITH THE MAXIMUM SUPPORT SPACING LISTED BELOW.
- FOR A COMPLETE LIST OF APPROVED SUPPORT METHODS, SEE THE INSTALLATION AND OPERATION MANUAL.
- DUCTWORK SHALL SLOPE NOT LESS THAN 1/16" PER LINEAR FOOT TOWARDS THE HOOD OR AN APPROVED GREASE COLLECTION RESERVOIR.
- WHERE HORIZONTAL DUCTS EXCEED 75 FEET IN LENGTH, THE SLOPE SHALL NOT BE LESS THAN 3/16" PER LINEAR FOOT.

DUCT DIAMETER	HORIZONTAL SUPPORT (FT)	VERTICAL WALL SUPPORT (FT)	VERTICAL CURB SUPPORT (FT)
5"	10'	10'	24"
6"	10'	10'	24"
7"	10'	10'	24"
8"	10'	10'	24"
10"	10'	10'	24"
12"	10'	10'	24"
14"	10'	10'	24"
16"	10'	10'	24"
18"	10'	10'	24"
20"	10'	10'	24"
22"	10'	10'	24"
24"	10'	10'	24"
26"	10'	10'	24"
28"	10'	10'	24"
30"	10'	10'	24"
32"	10'	10'	24"
34"	10'	10'	24"
36"	10'	10'	24"

DO NOT LEAK TEST USING SMOKE BOMBS CONTAINING CHLORINES/CHLORIDES. CONSULT WITH CAPTIVEAIRE FOR PROPER LEAK TESTING METHODS.

DUCTWORK #2 PARTS - JOB#4845619 FRYER

TAG	PART #	CFM	GPM	ZONE	COVEREDBY	SP	WEIGHT	VELOCITY	QTY	DESCRIPTION
P1	DW1045ASY	775					-0.0333	4.62	1420.94	1 SINGLE WALL DUCT 45 DEGREE ELBOW, 10" DUCT, ASSEMBLY.
P2	DW1007LT	775					-0.003	2.60	1420.94	1 SINGLE WALL DUCT 10" DIAMETER, 7" LONG, FLANGE AT BOTH ENDS. STAINLESS STEEL.
P3	DW1018AJDKIT	775					-0.004	7.95	1420.94	1 SINGLE WALL DUCT ADJUSTABLE, 10" DIAMETER, 17.5" LONG, FLANGE AT ONE END WITH A 10" ADJUSTABLE COLLAR - STAINLESS STEEL.
P4	DW10SUBRASY							2.54	1	DUCT SUPPORT BRACKET KIT, 10" DUCT, USED FOR HANGING DUCT. 12 GA STEEL, CLEAR ZINC COATING. - 2 RINGS, 4 BRACKETS, & HARDWARE BAG 2.
P5	DW1045ASY	775					-0.0475	4.62	1420.94	1 SINGLE WALL DUCT 45 DEGREE ELBOW, 10" DUCT, ASSEMBLY.
P6	DW1035LT	775					-0.015	11.78	1420.94	1 SINGLE WALL DUCT 10" DIAMETER, 35" LONG, FLANGE AT BOTH ENDS. STAINLESS STEEL.
P7	ASSEMBLED W/P9	DW1048AJDKIT	775				-0.01	18.63	1420.94	1 SINGLE WALL DUCT ADJUSTABLE, 10" DIAMETER, 47.5" LONG, FLANGE AT ONE END WITH A 10" ADJUSTABLE COLLAR - STAINLESS STEEL.
P8	DW10VESUB							19.56	1	DUCT VERTICAL SUPPORT KIT, 10" DUCT, 18" CLEARANCE TO COMBUSTIBLES. PARTS ARE ZINC COATED. HARDWARE KIT #3 USED ON DWXXVESU & DWXXVESUB.
P9	ASSEMBLED W/P7	DW1910TP	775					6.62	1	DUCT TO CURB TRANSITION, 19-1/2" CURB TO 10" DUCT, 16 GA ALUMINIZED STEEL. MISC. NON-STANDARD TRANSITION PLATE.
SYSTEM AT P9								-0.5488	0.00	
	3M-2000PLUS							0.80	1	DUCT - 3M FIRE BARRIER 2000 PLUS SILICONE - USED AS SEALANT TO SEAL DUCT JOINTS.
	834680600587XL							52.00	3	DUCT - DUCT INSULATION FOR ZERO CLEARANCE TO COMBUSTIBLES - 300" X 24" X 1-1/2" ROLL. PYROSCAT WRAP.
	BANDINGS							5.00	1	DUCT - FIRE BARRIER WRAP STAINLESS STEEL BANDING .5" WIDTH - 200 FT PER ROLL.
	DW10CLASY							0.82	6	DUCT - V" CLAMP WITH NEW DESIGN 14 GA BRACKETS, 10" DUCT, ASSEMBLY.
	SEAL-50-50							0.50	1	DUCT - FIRE BARRIER WRAP STAINLESS STEEL BANDING SEAL .5" WIDTH. QUANTITY OF 50.
	TAPEALUM							0.25	1	DUCT - FIRE BARRIER WRAP ALUMINUM FOIL TAPE - 3" X 150' ROLL.
TOTAL WEIGHT								246.39		

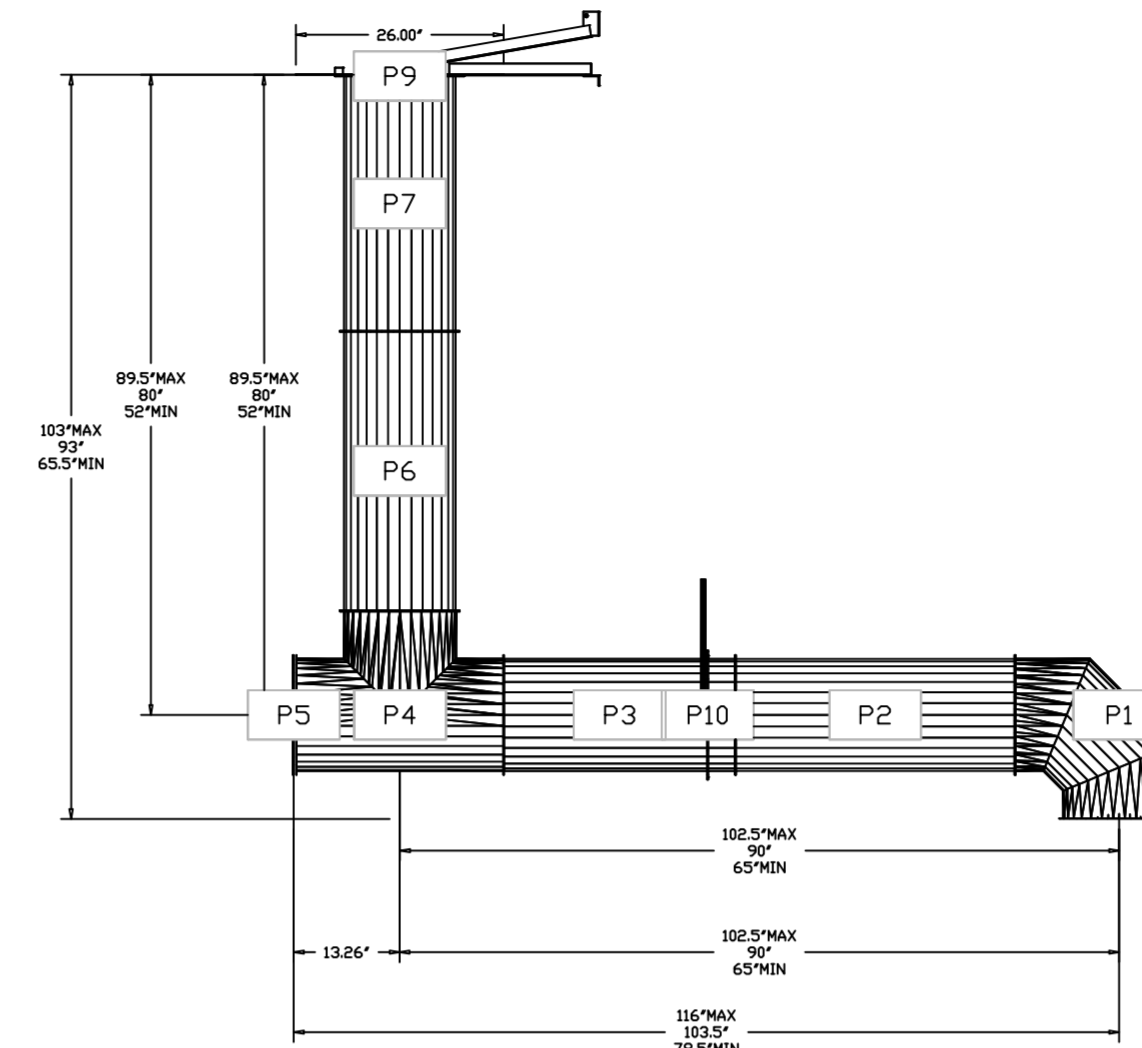
SINGLE WALL FACTORY BUILT DUCTWORK

- ALL DUCTWORK IS REQUIRED TO BE INSTALLED WITH THE MAXIMUM SUPPORT SPACING LISTED BELOW.
- FOR A COMPLETE LIST OF APPROVED SUPPORT METHODS, SEE THE INSTALLATION AND OPERATION MANUAL.
- DUCTWORK SHALL SLOPE NOT LESS THAN 1/16" PER LINEAR FOOT TOWARDS THE HOOD OR AN APPROVED GREASE COLLECTION RESERVOIR.
- WHERE HORIZONTAL DUCTS EXCEED 75 FEET IN LENGTH, THE SLOPE SHALL NOT BE LESS THAN 3/16" PER LINEAR FOOT.

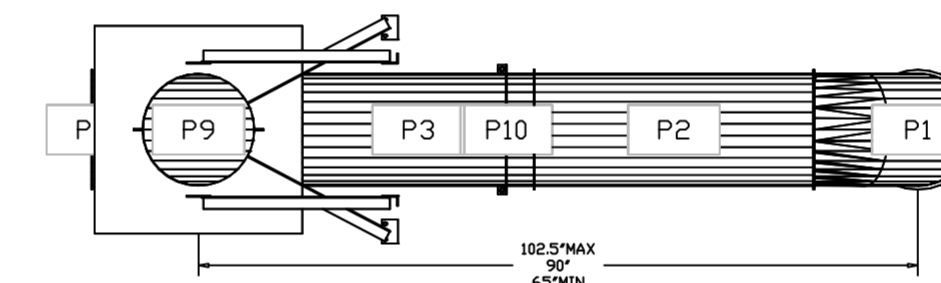
DUCT DIAMETER	HORIZONTAL SUPPORT (FT)	VERTICAL WALL SUPPORT (FT)	VERTICAL CURB SUPPORT (FT)
5"	10'	10'	24"
6"	10'	10'	24"
7"	10'	10'	24"
8"	10'	10'	24"
10"	10'	10'	24"
12"	10'	10'	24"
14"	10'	10'	24"
16"	10'	10'	24"
18"	10'	10'	24"
20"	10'	10'	24"
22"	10'	10'	24"
24"	10'	10'	24"
26"	10'	10'	24"
28"	10'	10'	24"
30"	10'	10'	24"
32"	10'	10'	24"
34"	10'	10'	24"
36"	10'	10'	24"

DO NOT LEAK TEST USING SMOKE BOMBS CONTAINING CHLORINES/CHLORIDES. CONSULT WITH CAPTIVEAIRE FOR PROPER LEAK TESTING METHODS.

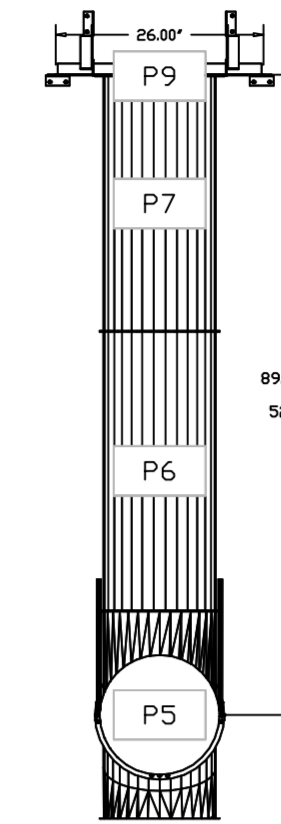
DUCTWORK #1 FRONT VIEW GRIDDLE



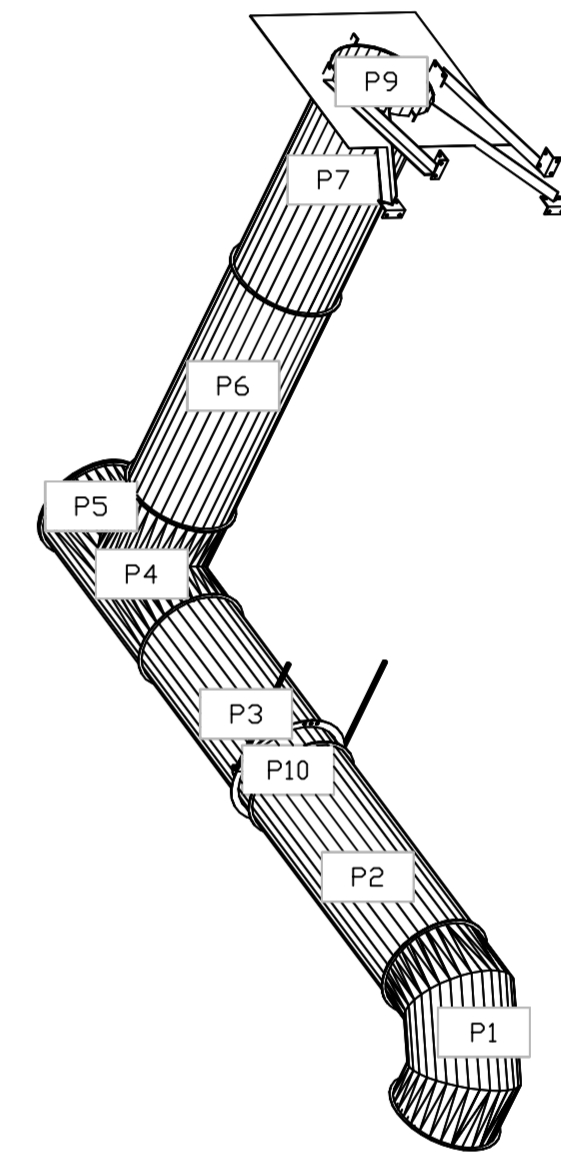
DUCTWORK #1 TOP VIEW GRIDDLE



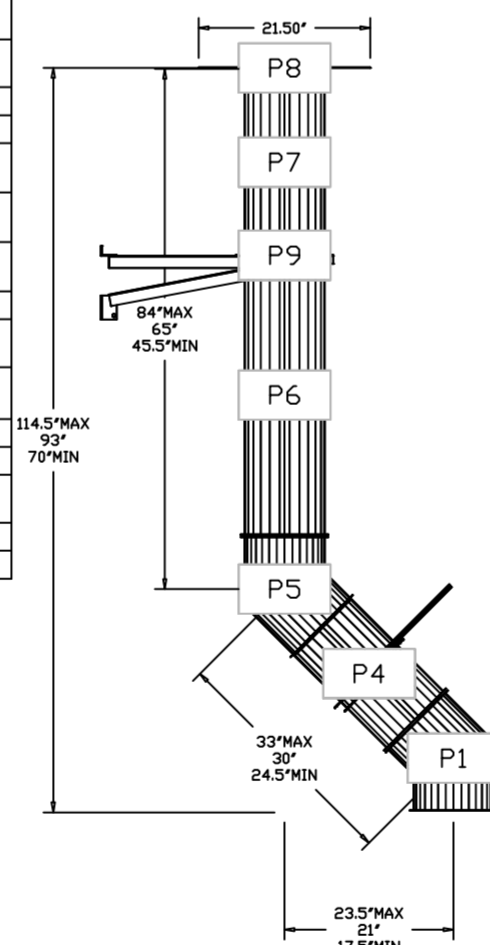
DUCTWORK #1 SIDE VIEW GRIDDLE



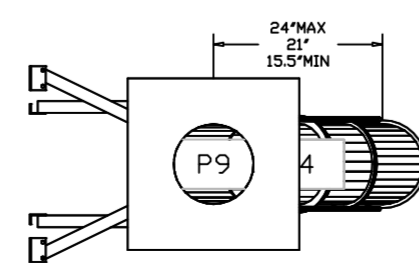
DUCTWORK #1 SE VIEW GRIDDLE



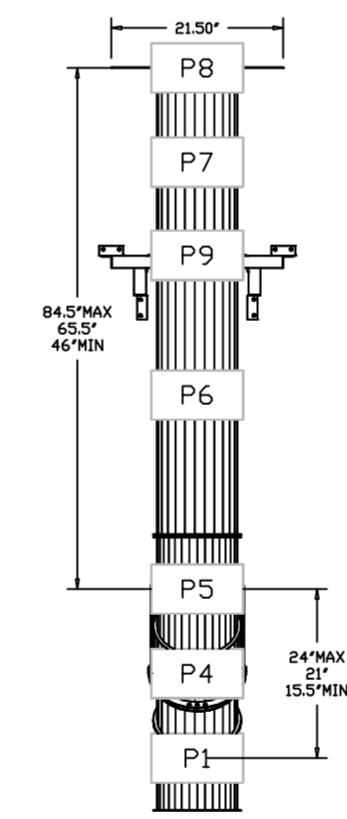
DUCTWORK #2 FRONT VIEW FRYER



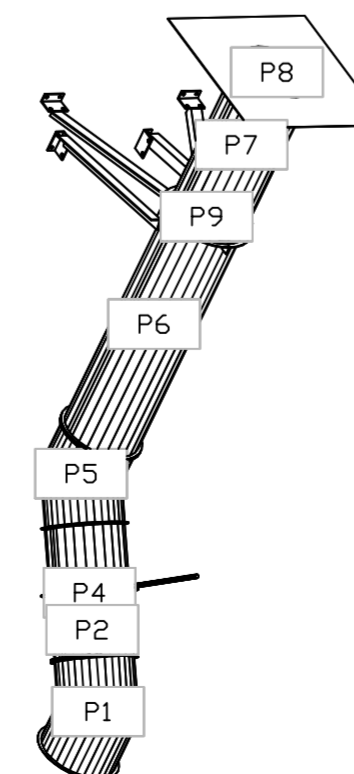
DUCTWORK #2 TOP VIEW FRYER



DUCTWORK #2 SIDE VIEW FRYER



DUCTWORK #2 SE VIEW FRYER



REVISIONS

DESCRIPTION	DATE

CAPTIVEAIRE

www.captiveaire.com
www.captiveaire.com

HBT Foodservice

104 W 9th St Suite 204, Kansas City, MO, 64105 PHONE: (816) 221-8511 FAX: (816) 221-8575 EMAIL: reg@hbtfoodservice.com

Freddy's - LaGrange, GA
LAGRANGE, GA, 30240

DATE: 4/15/2021.

DWG.#
4845619

DRAWN BY: michael.co

SCALE:
1/2" = 1'-0"

MASTER DRAWING

SHEET NO.
5