

SDV Job #: 6773269 - Penn Station V2B-6L (HAMILTON, OH)

Service Region: 361 - Cincinnati OH Service
Service Person: Travis Huff

Customer Number: 866644 **Customer Name:** NATIONAL TAB

Address: PENN STATION
3040 Dixie Highway
Hamilton, OH 45015

Region Job #: 6614698
Region Job Name: Penn Station V2B-6L (HAMILTON, OH)

Sales Region: 120 - Air Solutions
Sales Person: Joe Hertenstein

Created By: Travis Huff **Creation Date:** 10/1/2024 2:23 PM
Last Modified By: Travis Huff **Last Modified Date:** 10/3/2024 4:51 PM

Dining Room Pressure: 0 **Kitchen Pressure:** 0
Hours On Job: 0 **Extra Hours:** 0

Completed: Yes **Completed By:** Travis Huff
Completion Date: 10/3/2024 4:51 PM

Job Site Meeting

NONE

Hood Group 1

Exhaust CFM: Design = 1235 Initial = 1261 Final = 1261 (102.1% of design)

Other Notes:

N/A

See attachment(s): [202410021302232852.mp4]



Hood 1 (HD1-Grill) (HD1-Grill)

Model: 3650ELPX-2 **Length:** 6' 0"
Exhaust CFM: Design = 1235 Initial = 1261 Final = 1261
(102.1% of design)

Installation

Hung Using appropriate material to safely secure hood. Design: **Yes** Actual: **No**

Installation Notes:

No double-nut.

Specify Inappropriately Hung Hood Issues: Actual: **Double nut not used**

COOKING EQUIPMENT ON AND OPERATING Design: **Yes** Actual: **No**

COOKING EQUIPMENT INSTALLED AS CLOSE TO BACK WALL AS POSSIBLE Design: **Yes** Actual: **Yes**

END PANELS INSTALLED CORRECTLY Design: **Yes** Actual: **Yes**

Smoke Test Performed on all Hoods? Upload Video Design: **Yes** Actual: **Yes**

Measure the Front lower edge of the Hood to the Floor. (AFF) Design: **72** Actual: **72**

Is there insulation on Top of the Hood? Design: **Yes** Actual: **No**

Are there combustibles within 18" of the Hood? Actual: **No**

Filters

Type: Captrate Solo

Filter 1 Size: 16x16 Initial Velocity: 207 fpm Final Velocity: 207 fpm
Initial CFM: 316 Final CFM: 316 Fan: #1 - EADU85H (KEF1)

Filter 2 Size: 16x16 Initial Velocity: 220 fpm Final Velocity: 220 fpm
Initial CFM: 336 Final CFM: 336 Fan: #1 - EADU85H (KEF1)

Filter 3 Size: 16x16 Initial Velocity: 207 fpm Final Velocity: 207 fpm
Initial CFM: 316 Final CFM: 316 Fan: #1 - EADU85H (KEF1)

Filter 4 Size: 16x16 Initial Velocity: 192 fpm Final Velocity: 192 fpm
Initial CFM: 293 Final CFM: 293 Fan: #1 - EADU85H (KEF1)

Hood Group 2

Exhaust CFM: Design = 0 Initial = 0 Final = 0 (0% of design)
Supply CFM: Design = 1000 Initial = 1186 Final = 969 (96.9% of design)
Supply AC CFM: Design = 0 Initial = 320 Final = 320 (0% of design)

Hood 2 (HD1-PSP) (HD1-PSP)

Model: 246Misc ACPSP-ONLY **Length:** 6' 0"
Exhaust CFM: Design = 0 Initial = 0 Final = 0 (0% of design)

Installation

Hung Using appropriate material to safely secure hood. Design: **Yes** Actual: **No**

Installation Notes:

No double-nut.

Specify Inappropriately Hung Hood Issues: Actual: **Double nut not used**

COOKING EQUIPMENT ON AND OPERATING Design: **Yes** Actual: **No**

COOKING EQUIPMENT INSTALLED AS CLOSE TO BACK WALL AS POSSIBLE Design: **Yes** Actual: **No**

Smoke Test Performed on all Hoods? Upload Video Design: **Yes** Actual: **Yes**

Measure the Front lower edge of the Hood to the Floor. (AFF) Design: **80** Actual: **80**

Is there insulation on Top of the Hood? Design: **Yes** Actual: **No**

Are there combustibles within 18" of the Hood? Actual: **No**

Supply

Supply CFM: Design = 1000 Initial = 1186 Actual = 969
 (96.9% of design) Fan: #4 - EA1-D.250-15D (HMUA1)

AC CFM: Design = 0 Initial = 320 Actual = 320
 (0% of design)

PSP 1

Orientation: Front **Length:** 6' 0" **Width:** 14"

Banks: 1 **Blanks:** 1

CFM: Design = 998 Initial = 1186 Final = 969
 (0% of design)

Velocity: Design = 168 Initial = 0 Final = 0
 (0% of design)

AC CFM: Design = 465 Initial = 320 Final = 320
 (0% of design)

AC Velocity: Design = 0 Initial = 0 Final = 0
 (0% of design)

Readings:

1: Initial: 178 fpm, Final: 148 fpm 2: Initial: 162 fpm, Final: 139 fpm

3: Initial: 168 fpm, Final: 148 fpm
5: Initial: 196 fpm, Final: 142 fpm

4: Initial: 205 fpm, Final: 162 fpm
6: Initial: 167 fpm, Final: 140 fpm

AC Readings:

1: Initial: 147 fpm, Final: 147 fpm
3: Initial: 115 fpm, Final: 115 fpm
5: Initial: 152 fpm, Final: 152 fpm

2: Initial: 128 fpm, Final: 128 fpm
4: Initial: 84 fpm, Final: 84 fpm
6: Initial: 170 fpm, Final: 170 fpm

Hood Group 4

Exhaust CFM: Design = 833 Initial = 832 Final = 832 (99.9% of design)

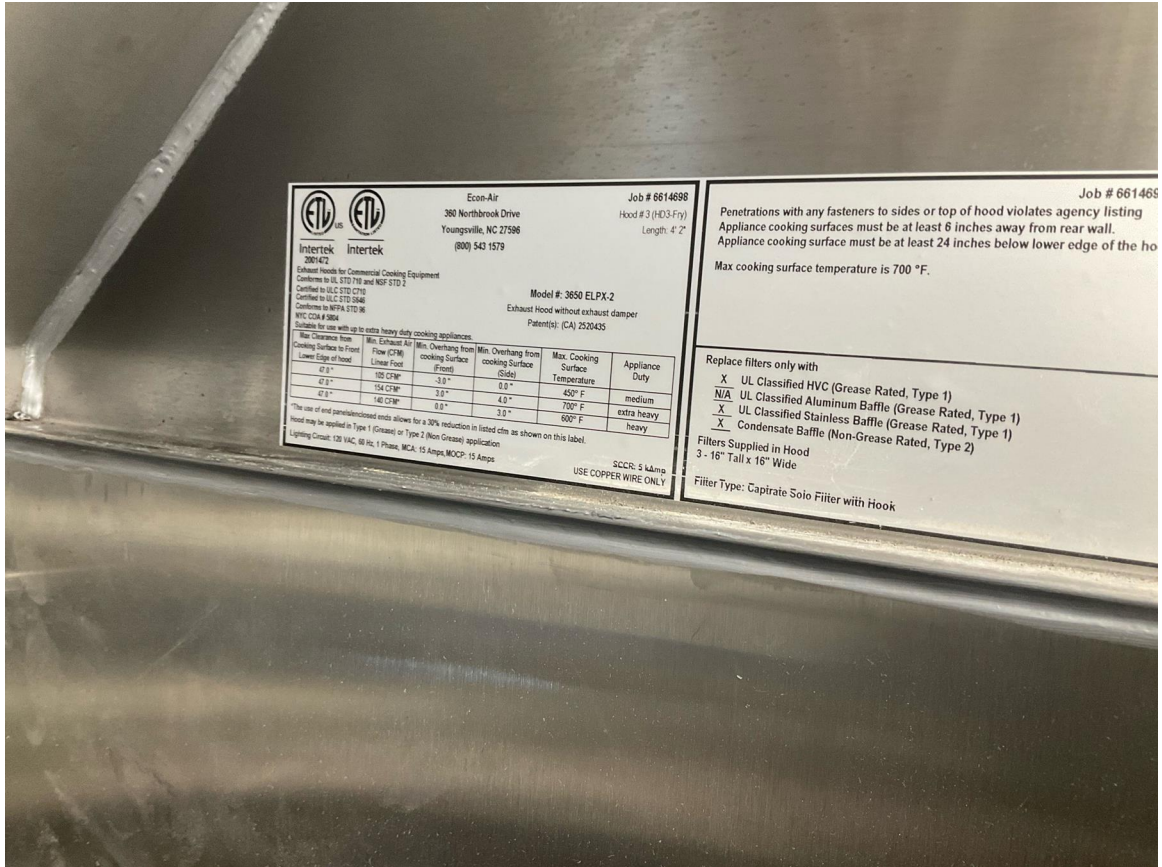
Hood 3 (HD3-Fry) (HD3-Fry)

Model: 3650ELPX-2 **Length:** 4' 2"
Exhaust CFM: Design = 833 Initial = 832 Final = 832 (99.9% of design)

Other Notes:

N/A

See attachment(s): [202410021302213732.mp4]



Hung Using appropriate material to safely secure hood.

Design: **Yes**

Actual: **No**

Installation Notes:

No double-nut.

Specify Inappropriately Hung Hood Issues:

Actual: **Double nut not used**

COOKING EQUIPMENT ON AND OPERATING

Design: **Yes**

Actual: **No**

COOKING EQUIPMENT INSTALLED AS CLOSE TO BACK WALL AS POSSIBLE

Design: **Yes**

Actual: **Yes**

END PANELS INSTALLED CORRECTLY

Design: **Yes**

Actual: **Yes**

Smoke Test Performed on all Hoods? Upload Video

Design: **Yes**

Actual: **Yes**

Measure the Front lower edge of the Hood to the Floor. (AFF)

Design: **72**

Actual: **72**

Is there insulation on Top of the Hood?

Design: **Yes**

Actual: **No**

Are there combustibles within 18" of the Hood?

Actual: **No**

Filters

Type: Captrate Solo

Filter 1 Size: 16x16 Initial Velocity: 193 fpm Final Velocity: 193 fpm
Initial CFM: 294 Final CFM: 294 Fan: #3 - EADU85H (KEF3-FRY)

Filter 2 Size: 16x16 Initial Velocity: 183 fpm Final Velocity: 183 fpm
Initial CFM: 279 Final CFM: 279 Fan: #3 - EADU85H (KEF3-FRY)

Filter 3 Size: 16x16 Initial Velocity: 170 fpm Final Velocity: 170 fpm
Initial CFM: 259 Final CFM: 259 Fan: #3 - EADU85H (KEF3-FRY)

Hood Group 5

Exhaust CFM: Design = 0 Initial = 0 Final = 0 (0% of design)
Supply CFM: Design = 630 Initial = 844 Final = 678 (107.6% of design)
Supply AC CFM: Design = 0 Initial = 196 Final = 196 (0% of design)

Hood 4 (HD3-PSP) (HD3-PSP)

Model: 246Misc ACPSP-ONLY **Length:** 4' 2"
Exhaust CFM: Design = 0 Initial = 0 Final = 0 (0% of design)

Installation

Hung Using appropriate material to safely secure hood.	Design: Yes	Actual: No
Installation Notes:		
<i>No double-nut.</i>		
Specify Inappropriately Hung Hood Issues:		Actual: Double nut not used
COOKING EQUIPMENT ON AND OPERATING	Design: Yes	Actual: No
COOKING EQUIPMENT INSTALLED AS CLOSE TO BACK WALL AS POSSIBLE	Design: Yes	Actual: Yes
Smoke Test Performed on all Hoods? Upload Video	Design: Yes	Actual: Yes
Measure the Front lower edge of the Hood to the Floor. (AFF)	Design: 80	Actual: 80
Is there insulation on Top of the Hood?	Design: Yes	Actual: No
Are there combustibles within 18" of the Hood?		Actual: No

Supply

Supply CFM: (107.6% of design)	Design = 630 Fan: #4 - EA1-D.250-15D (HMUA1)	Initial = 844	Actual = 678
AC CFM: (0% of design)	Design = 0	Initial = 196	Actual = 196

PSP 1

Orientation:	Front	Length:	4' 2"	Width:	14"
Banks: 1	Blanks: 1				
CFM: (0% of design)	Design = 630	Initial = 844	Final = 678		
Velocity: (0% of design)	Design = 157	Initial = 0	Final = 0		
AC CFM: (0% of design)	Design = 250	Initial = 196	Final = 196		
AC Velocity: (0% of design)	Design = 0	Initial = 0	Final = 0		

Readings:

1: Initial: 188 fpm, Final: 144 fpm	2: Initial: 194 fpm, Final: 155 fpm
3: Initial: 169 fpm, Final: 130 fpm	4: Initial: 184 fpm, Final: 158 fpm
5: Initial: 212 fpm, Final: 173 fpm	6: Initial: 185 fpm, Final: 149 fpm

AC Readings:

1: Initial: 136 fpm, Final: 136 fpm	2: Initial: 93 fpm, Final: 93 fpm
3: Initial: 101 fpm, Final: 101 fpm	4: Initial: 128 fpm, Final: 128 fpm

5: Initial: 139 fpm, Final: 139 fpm

6: Initial: 123 fpm, Final: 123 fpm

Fans

Fan 1 - EADU85H (KEF1) (KEF1)

Model: EADU85H

Other Notes:

N/A



Exhaust

Exhaust CFM: Design = 1250 Actual = 1261 (101% of design)

Record the ECM Speed		Actual:	67
VOLTS	Design:	115	Actual: 120
Do all legs measure the same phase to phase and phase to ground voltage? If not, include notes with all phase to phase and phase to ground voltages.	Design:	Yes	Actual: Yes
HP	Design:	0.75	Actual: 0.75
HUB SET SCREW TIGHT	Design:	Yes	Actual: Yes
FAN LEVEL	Design:	Yes	Actual: Yes
ROTATION	Design:	Correct	Actual: Correct
UNIT VIBRATION	Design:	Good	Actual: Good
FLA	Design:	8.9	Actual: 5.9
OVERLOAD SET POINT	Design:	8.9	Actual: 8.9
PHASE	Design:	1	Actual: 1
Unit within five miles from the coast?		Actual:	No
HINGE KIT INSTALLED	Design:	Yes	Actual: Yes
INSPECT ALL EXTERIOR SIDES OF UNIT. ANY VISIBLE DAMAGE	Design:	No	Actual: No
SPEED CONTROL VOLTAGE	Design:	65	Actual: N/A
RPM - DESIGN	Design:	1278	Actual: 1206
RPM - MAX	Design:	1900	Actual: N/A
RPM - MAX RECOMMENDED	Design:	1600	Actual: N/A

Fan 2 - EADU33H (KEF2-OVEN) (KEF2-OVEN)

Model: EADU33H

Record the ECM Speed		Actual:	89
VOLTS	Design:	115	Actual: 122
Do all legs measure the same phase to phase and phase to ground voltage? If not, include notes with all phase to phase and phase to ground voltages.	Design:	Yes	Actual: No
HP	Design:	0.333	Actual: 0.33
HUB SET SCREW TIGHT	Design:	Yes	Actual: Yes
FAN LEVEL	Design:	Yes	Actual: Yes
ROTATION	Design:	Correct	Actual: Correct
UNIT VIBRATION	Design:	Good	Actual: Good
FLA	Design:	4.3	Actual: 3.9
OVERLOAD SET POINT	Design:	4.3	Actual: 4.3
PHASE	Design:	1	Actual: 1
Unit within five miles from the coast?			Actual: No
HINGE KIT INSTALLED	Design:	Yes	Actual: Yes
INSPECT ALL EXTERIOR SIDES OF UNIT. ANY VISIBLE DAMAGE	Design:	No	Actual: No
SPEED CONTROL VOLTAGE	Design:	65	Actual: N/A
RPM - DESIGN	Design:	1300	Actual: 1602
RPM - MAX	Design:	2000	Actual: N/A
RPM - MAX RECOMMENDED	Design:	1600	Actual: N/A

Fan 3 - EADU85H (KEF3-FRY) (KEF3-FRY)

Model: EADU85H

Other Notes:

N/A



Exhaust

Exhaust CFM: Design = 850 Actual = 832 (98% of design)

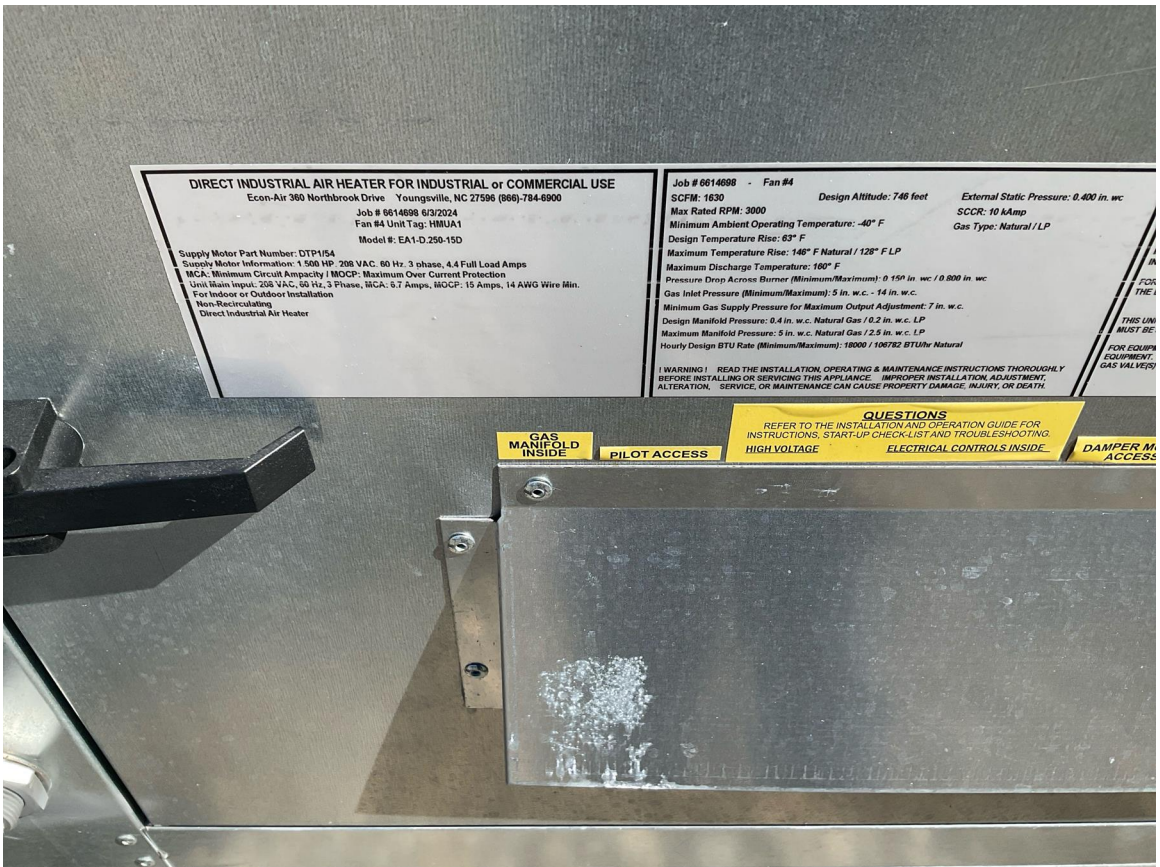
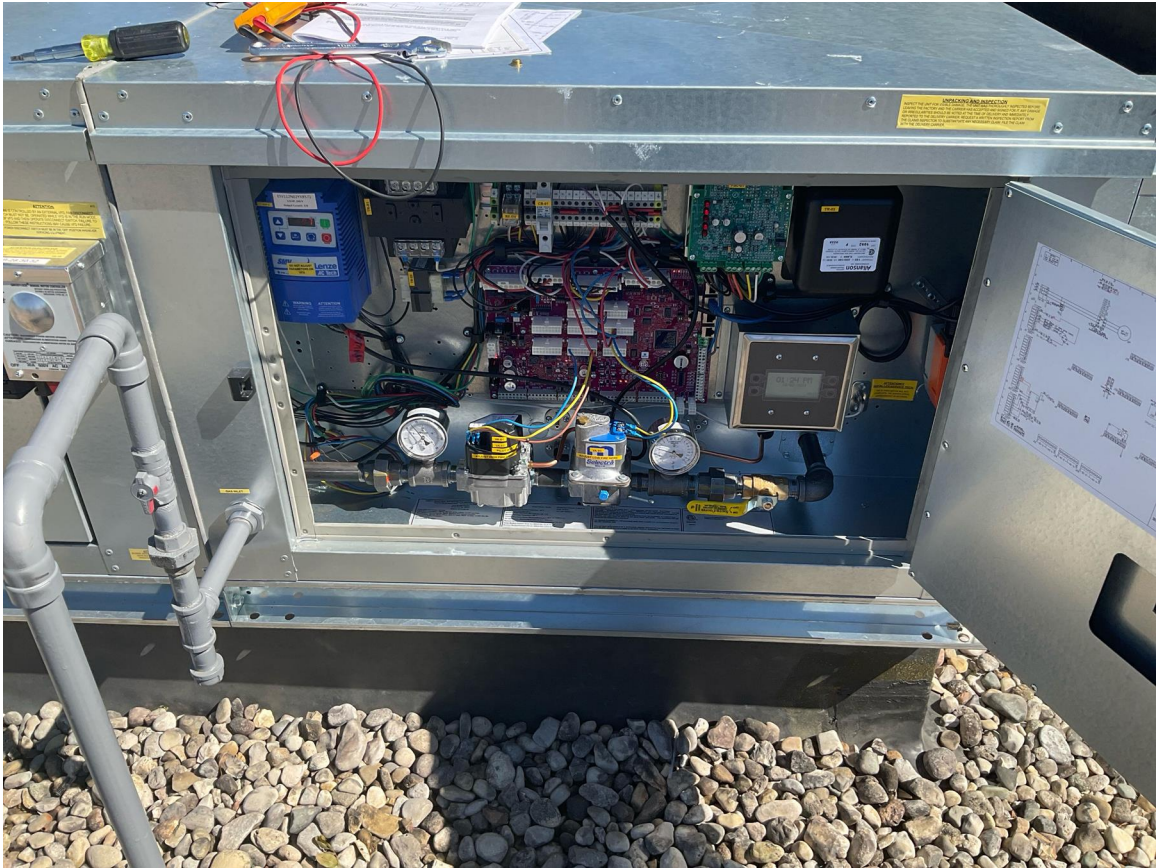
Record the ECM Speed		Actual:	66
VOLTS	Design:	115	Actual: 122
Do all legs measure the same phase to phase and phase to ground voltage? If not, include notes with all phase to phase and phase to ground voltages.	Design:	Yes	Actual: Yes
HP	Design:	0.75	Actual: 0.75
HUB SET SCREW TIGHT	Design:	Yes	Actual: Yes
FAN LEVEL	Design:	Yes	Actual: Yes
ROTATION	Design:	Correct	Actual: Correct
UNIT VIBRATION	Design:	Good	Actual: Good
FLA	Design:	8.9	Actual: 5.7
OVERLOAD SET POINT	Design:	8.9	Actual: 8.9
PHASE	Design:	1	Actual: 1
Unit within five miles from the coast?			Actual: No
HINGE KIT INSTALLED	Design:	Yes	Actual: Yes
INSPECT ALL EXTERIOR SIDES OF UNIT. ANY VISIBLE DAMAGE	Design:	No	Actual: No
SPEED CONTROL VOLTAGE	Design:	65	Actual: N/A
RPM - DESIGN	Design:	1189	Actual: 1188
RPM - MAX	Design:	1900	Actual: N/A
RPM - MAX RECOMMENDED	Design:	1600	Actual: N/A

Fan 4 - EA1-D.250-15D (HMUA1) (HMUA1)

Model: EA1-D.250-15D

Other Notes:

N/A





Supply

Supply CFM:	Design = 1630	Actual = 1647	(101% of design)
VOLTS		Design: 208	Actual: 211
Is the main transformer (TR-01) tapped for the correct voltage?			Actual: Yes
HP		Design: 1.5	Actual: 1.5
HUB SET SCREW TIGHT		Design: Yes	Actual: Yes
FAN LEVEL		Design: Yes	Actual: Yes
ROTATION		Design: Correct	Actual: Correct
UNIT VIBRATION		Design: Good	Actual: Good
FLA		Design: 4.4	Actual: 2.8
OVERLOAD SET POINT		N/A	
PHASE		Design: 3	Actual: 3
DAMPER INSTALLED		Design: Yes	Actual: Yes
Unit within five miles from the coast?			Actual: No
INSPECT ALL EXTERIOR SIDES OF UNIT. ANY VISIBLE DAMAGE			Actual: No
Record the VFD HZ		Design: 59.7 Hz	Actual: 49.7

RPM - DESIGN	Design: 1740	Actual: 1449
RPM - MAX	Design: 2400	Actual: N/A
RPM - MAX RECOMMENDED	Design: 2100	Actual: N/A
Is Supply Fan bolted/secured to curb?	Design: Yes	Actual: Yes

Heater

Gas Heater

GAS TYPE	Design: Natural	Actual: Natural
INLET GAS PRESSURE	Design: 7	Actual: 13
FREEZE STAT TEMPERATURE	Design: 35	Actual: 35
FREEZE STAT TIMER	Design: 10	Actual: 10
SPACE SET POINT	Design: N/A	Actual: N/A
INTAKE SET POINT	Design: 45	Actual: 50
DISCHARGE SET POINT	Design: 55	Actual: 60
HIGH LIMIT SET POINT		Actual: 170

Direct Fired Heater

Housing Size: 1

Burner Profile Pressure: 0"

PILOT FLAME SIGNAL	Design: 12	Actual: 15.7
TEMP RISE	Design: 63	Actual: 63
HIGH FIRE MANIFOLD GAS PRESSURE	Design: 0.4	Actual: 0.4
HIGH FIRE INLET PRESSURE		Actual: 12.5
HIGH FIRE FLAME SIGNAL	Design: 12	Actual: 15.7
BURNER DIFFERENTIAL PRESSURE	Design: 0.3	Actual: 0.3
LOW MANIFOLD GAS PRESSURE		Actual: -0.2
MODULATION TIME	Design: 4	Actual: 1
LOW FIRE FLAME SIGNAL	Design: 12	Actual: 15.7

ECPs

ECP 1 - SC-E013022MA (ECP1) (ECP1)

GAS VALVE RESET WORKS	Design: Yes	Actual: Yes
ROOM TEMPERATURE OFFSET	Design: 18	Actual: 18

Other Notes:

18 degrees for temp sensor 2 and 20 degrees for temp sensor 3.

HOW MANY FAN ZONES ARE THERE	Design: 2	Actual: 2
HYSTERESIS TEMPERATURE		Actual: 2
Room Sensor Type	Design: RoomSensor	Actual: Room Sensor
Is room sensor wireless or wired?		Actual: Wired
Is room sensor operating correctly? Upload Picture of installation		Actual: Yes

Other Notes:

N/A



Are there Tempering HMI's?	Design: Yes	Actual: No
ALL TEMP SENSORS ARE WIRED IN	Design: Yes	Actual: Yes
Do any of the light circuits exceed 1400W?	Design: No	Actual: No
ALL LIGHTS WORK	Design: Yes	Actual: Yes
ALL FAULTS CLEARED	Design: Yes	Actual: Yes

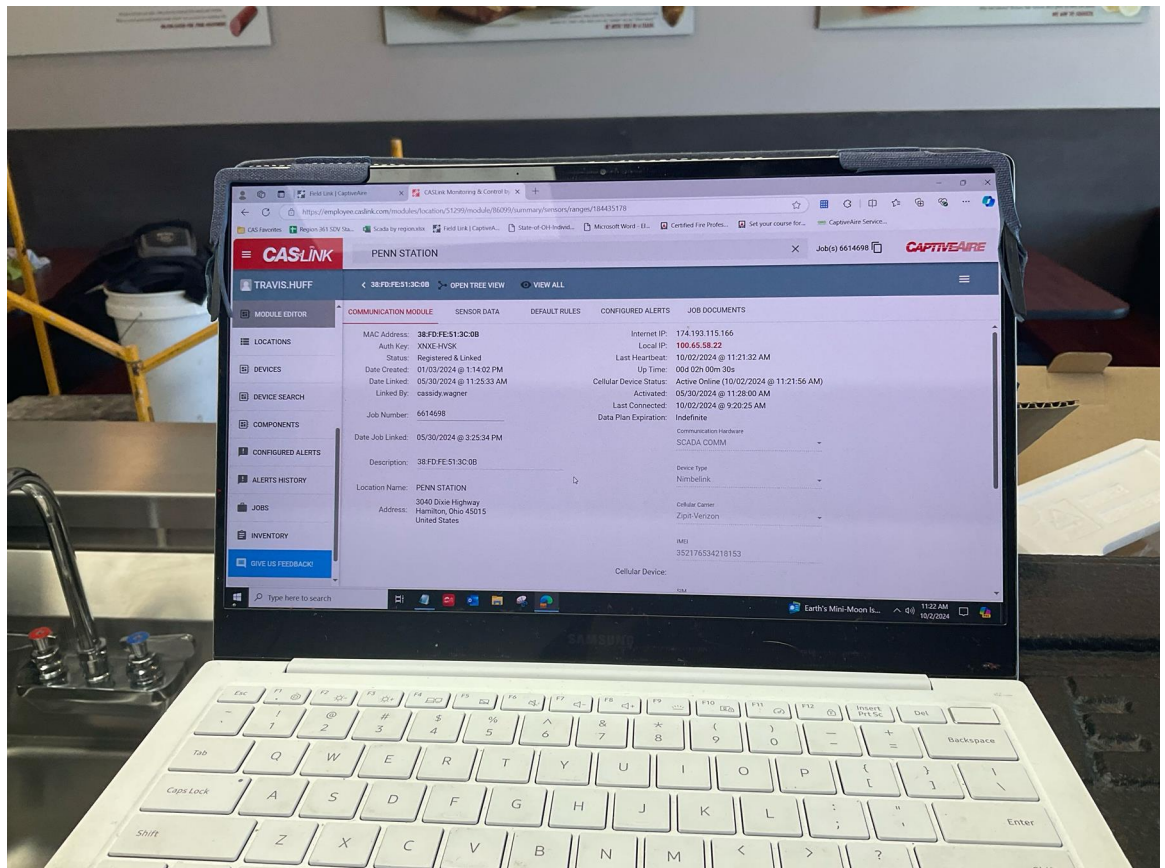
ECPM03 HARDWARE REVISION	Design: 04	Actual: 04
ECPM03 PROGRAM VERSION	Design: 2.16.01	Actual: 2.16.01
CASHMI HARDWARE REVISION	Design: 05	Actual: 05
CASHMI PROGRAM VERSION	Design: 2.16.01	Actual: 2.16.01
ECPM03 DATE AND TIME ACCURATE	Design: Yes	Actual: Yes

BMS & Monitoring

BMS TYPE	Design: CASLink	Actual: CASLink
CASLINK COMMUNICATION TYPE	Design: Cellular	Actual: Cellular
Cellular status is Active Online?	Design: Yes	Actual: Yes
CASLink Registration Wizard was completed?	Design: Yes	Actual: Yes
CASLink Module has a current heartbeat?	Design: Yes	Actual: Yes

Other Notes:

N/A



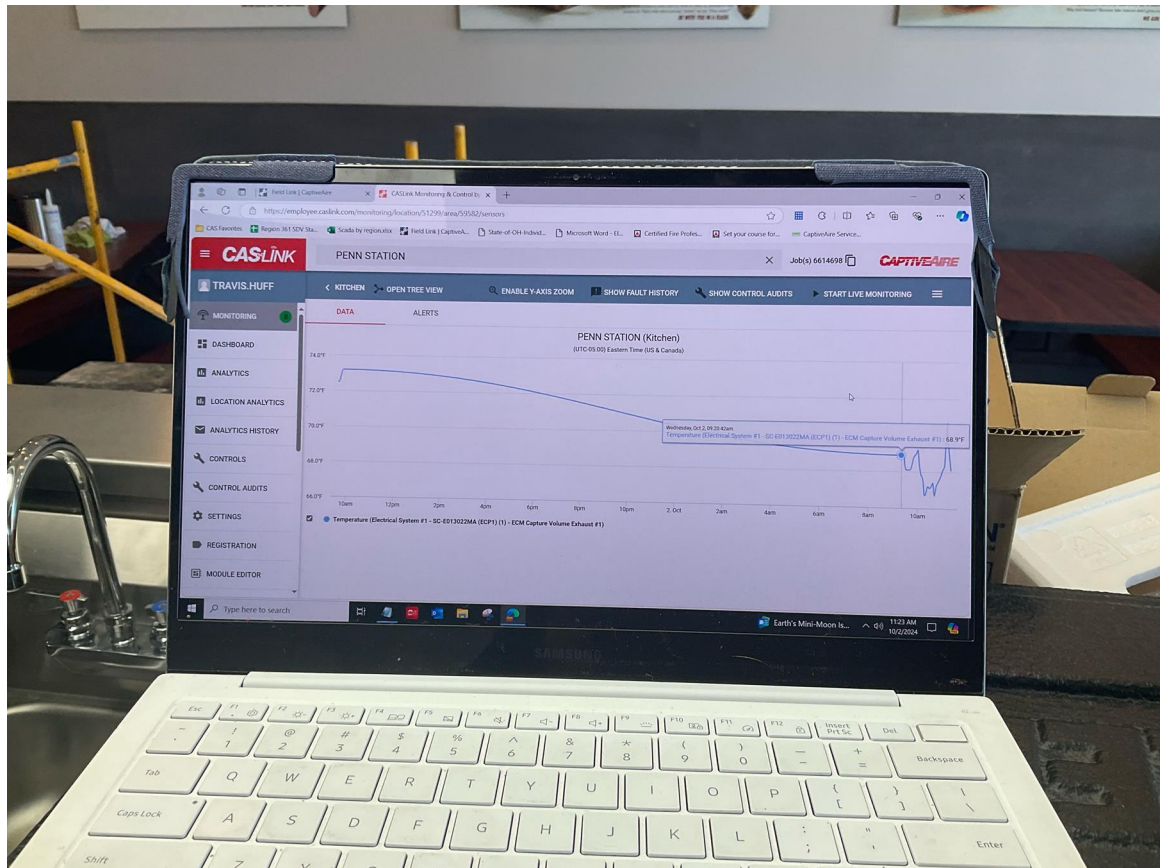
All devices connected to the SCADA are reporting live data?

Design: **Yes**

Actual: **Yes**

Other Notes:

N/A



Devices were assigned to an area and named appropriately?

Design: **Yes**

Actual: **Yes**

Sensors

T2

SENSOR TYPE

Design: **Duct Stat**

Actual: **Duct Stat**

SENSOR LOCATION

Design: **H1CV1**

Actual: **H1CV1**

FAN NUMBER

Design: **1**

Actual: **1**

T3

SENSOR TYPE

Design: **Duct Stat**

Actual: **Duct Stat**

SENSOR LOCATION

Design: **H3CV1**

Actual: **H3CV1**

VFDs**VFD 1**

DESIGN CFM	Design: 1630	Actual: 1647
FAN DIRECTION	Design: Forward	Actual: Forward

DCV VFD

SUPPLY FAN # ASSIGNED	Design: 4	Actual: 4
OVERLOAD = P108	Design: 73	Actual: 73
MAX HZ	Design: 59.7	Actual: 49.7
ALL FAULTS CLEARED = P197	Design: Yes	Actual: Yes
P508		Actual: 2.8
LOAD IN SEPARATE CONDUIT.	Design: Yes	Actual: Yes

TANK**TANK ECP 1 (ECP1)**

Location : Hood #1 3650ELPX-2: Fire Cabinet Wall Mounted [4.0/4.0/4.0]

Other Notes:

N/A





Building Alarm Tied In	Design: Yes	Actual: No
Trouble Relay Tied In	Design: Yes	Actual: No
TANK Board Version	Design: 2.3	Actual: 2.3
TANK Board Updated to latest Software Version		Actual: Yes
TANK Board Software Version	Design: 1.69	Actual: 1.69
Internet Connection Type		Actual: Cellular

TANK Fire Suppression 1 (fs1)

Location : Hood #1 - Utility Cabinet Wall Mount

Electrician

TANK Control Panel Wired	Design: Yes	Actual: Yes
UDS Appliance Kill Switch (if equipped) Wired	N/A	
Wall Mounted COPRE Wired to Control Panel	Design: Yes	Actual: Yes
Verify Power Supply is 27.5VDC		Actual: Yes

Fire System Contractor w/CAS Supervision

Verify kitchen line up with drawings in NOLA?		Actual:	Correct
Are all overlapping nozzles within 35-50" of cooking surface?	Design:	Yes	Actual: Yes
Nozzles Within 15" From Front/Back of Hazard Zone	Design:	Yes	Actual: Yes
Verify overlapping nozzles are located at centerline of the 30" hazard zone (front to back) same height, aimed straight down?	Design:	Yes	Actual: Yes
Is there a Salamander or Upright Broiler Present?		Actual:	No
Does the depth of any appliance cooking surface exceed the listed size in the Appliance Coverage Detail chart?	Design:	No	Actual: No
All dedicated appliances, duct and plenum are utilizing TANK appliance nozzles (3070-3/8H-10-SS)?	Design:	Yes	Actual: Yes
Is end plenum nozzle installed 0-6" into plenum (From end of hood/hazard to center of nozzle)?	Design:	Yes	Actual: Yes
Are TANK appliance nozzles spaced no more than 12"(From end of Hazard zone to center of first nozzle and end of hazard zone to center of last nozzle)?	Design:	Yes	Actual: Yes
Did the appliance lineup change from the original design?	Design:	No	Actual: No
Did the fire system appliance drops change from the original design?	Design:	No	Actual: No
Does Fire System cover a Wok?		Actual:	No
Does dedicated TANK appliance nozzle piping exceed maximum pipe length of 10 ft?	Design:	No	Actual: No
Does plenum branch piping exceed maximum pipe length of 3ft?	Design:	No	Actual: No
Does the Supply line piping to first overlapping nozzle exceed 42 ft?	Design:	No	Actual: No
Is Back-shelf a minimum of 18" Vertically off Appliance			N/A
Back-shelf Overhang less than 12"			N/A
No appliance drop has more than 2 nozzles?	Design:	True	Actual: True

Is all piping except appliance drops
3/8" Blackiron, Chrome plated,
Stainless Steel or 1/2" Copper?

Design: **Yes**

Actual: **Yes**

Is all appliance drop piping 3/8"
polished stainless steel or polished
chrome-plated black iron?

Actual: **Yes**

Are there any fryers?

Actual: **Yes**

How many fryers are there?

Actual: **2**

Enter Width of Fryer 1 Hazard
Zone:

Actual: **14**

Enter Width of Fryer 2 Hazard
Zone:

Actual: **7**

Are there any Tilt Skillets?

Actual: **No**

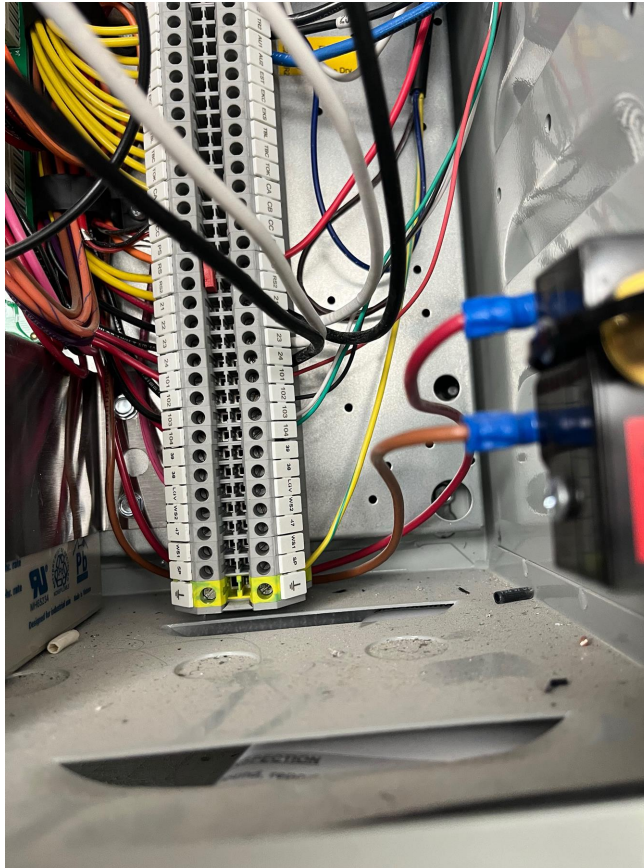
Is Manual Activation Device Wired into a Fire Loop (Must be 4 wire, in conduit)? Upload a picture of wiring connection of manual activation device.

Design: **Yes**

Actual: **Yes**

Other Notes:

N/A



MAD Installed 10'-20' from Hood at a Point of Egress and 42"-48" AFF

Design: **Yes**

Actual: **Yes**

Extra Fire Stat Added

N/A

Fire stats are wired in a fire loop with 842 degree high temp wire when ran on top of hoods

Design: **Yes**

Actual: **Yes**

CAS Service Supervised, Assisted or Wired All Supervised Loop Connections

Actual: **Only verified connections at MAD and terminals**

Total amount of FP's used

Design: **38**

Actual: **38**

CAS Service

Verify the correct Fire Stat is installed?

Actual: **360**

Have all shipping covers been removed from fire stats

Design: **Yes**

Actual: **Yes**

Testing of TANK system completed or being completed by:		Actual: CAS Service
Test System. Ensure balloons are installed on all nozzles before activating system.		Actual: Ok
Activate system by Manual Activation device. Did system activate and all balloons fill and/or hold pressure properly?	Design: Yes	Actual: Yes
Activate system by all Fire Stats. Did system activate and all balloons fill and/or hold pressure properly?	Design: Yes	Actual: Yes
System Activates on 120V power only	Design: Yes	Actual: Yes
Activate system on Battery Backup (Remove CORE board power and place system in Test Mode). Did system activate properly?	Design: Yes	Actual: Yes
Did the Audible Alarm Sound during each Test of the system?	Design: Yes	Actual: Yes
Battery Date Code (The actual date FST wrote on batteries with paint pen during SDV)		Actual: 10/2/2024 4:57:00 PM
Verify the correct amount of TANK appliance nozzles cover the cross-sectional Perimeter or Diameter of the Duct Riser? (If 0 - 75" perimeter equals 1 nozzles, 75 - 150" 2 nozzles, above 150" 3 nozzles)	Design: Yes	Actual: Yes

Is the system commissioned with the actuator bolted onto the TANK Fire Suppression system? Upload Picture.

Design: **Yes**

Actual: **No**

Other Notes:

N/A



Is pressure switch installed and functioning properly?

Design: **Yes**

Actual: **Yes**

CAUTION!: If pressure reads above 0.5 psi, immediately remove the primary actuator hose from the primary tank

Actual: **Ok**

Is appliance specific protection
piped with adequate protection?
Upload picture.

Design: **Yes**

Actual: **Yes**

Use coil liquid leak detector around PAK and braided hose to check for leaks. Are there any leaks present?

Design: **No**

Actual: **No**

Do TANK bottles have 200 PSI with
gauges functioning properly?
Upload picture

Design: **Yes**

Actual: **Yes**

Other Notes:

N/A





Do all nozzles have metal caps?	Design: Yes	Actual: Yes
Verify Nozzle Flow Points/Tank Capabilities. Does Nozzles FP exceed Tank Capacity?	Design: No	Actual: No
Take a photo of Fire System Tag		Actual: Ok
Vent plug installed on wall mount FS distribution piping (in between tanks, aimed at door)?	Design: Yes	Actual: Yes
Tanks installed securely with straps and mounting hardware?	Design: Yes	Actual: Yes
After inspection of system, lubricate and change O-ring of primary actuator hose (p/n 19020).	Design: Replaced	Actual: Replaced
All Faults Are Cleared	Design: Yes	Actual: Yes
Are DIP switches set correctly according to number of Fire Groups?	Design: Yes	Actual: Yes
Is TANK system located/mounted in a climate-controlled area?	Design: Yes	Actual: Yes

PCU Installations

NONE

PCU Installations

NONE

AQEs

NONE

UDS

NONE