

Report By:

National TAB



**Report: Deficiency Report**

**Function: Test, Adjust, & Balance**

**Date: 08/20/2025**

**Completed By: National TAB**

# PROJECT

**08-18-25 WAWA #6620 ELKTON, VA**

14825 ROCKINGHAM PIKE

ELKTON, VA 22827

## Client

Wawa

260 West Baltimore Pike

Wawa, PA 19063

## Issue List

- Diffuser EF1-2 - Wrong Grille Type
- Exhaust Ductwork
- RTU 2 - Core Controls
- RTU 2 - Missing Supply/Return Grilles
- RTU 3 - Space Sensor



08-18-25 WAWA #6620 ELKTON, VA

Project Issue Information

**Issue Name :** Diffuser EF1-2 - Wrong Grille Type  
**Description :** Exhaust diffuser EF1-2 (women's restroom) is using a SD-5 supply grille instead of the required EG-1 exhaust grille. The supply and exhaust grilles in the restroom appear to be swapped. Recommend installing correct grille.  
**Created By :** National TAB                      **Assigned To :** National TAB - Dan Hertenstein  
**Status :** Open  
**Priority :** Low                                      **Asset Tag :**  
**Originated Date :** 08/20/2025 - Mark Johnson - National TAB

Project Issue File Details



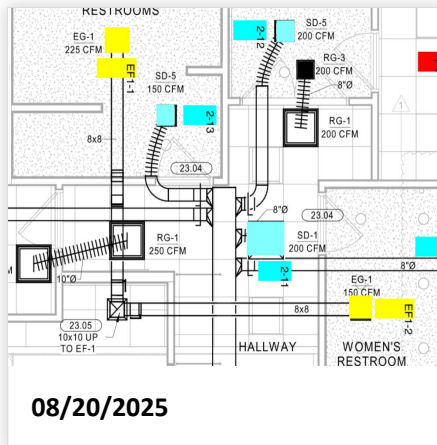
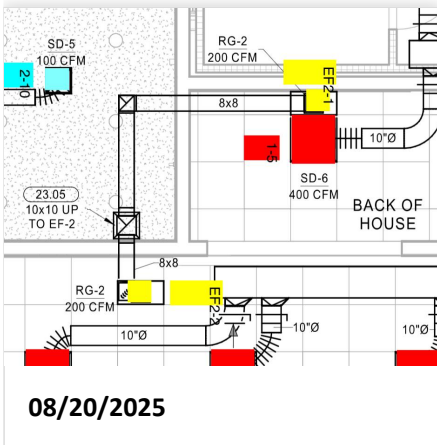


08-18-25 WAWA #6620 ELKTON, VA

**Project Issue Information**

**Issue Name :** Exhaust Ductwork  
**Description :** Exhaust fan ductwork is constructed differently from plans. Mechanical plans specify 8X8 square duct with turning vanes for both rooftop exhaust fans. Installed is 8" round duct with flex at the diffuser connections. This is a 21% reduction of free area and is restricting flow in both exhaust fans. Recommend mechanical inspection.  
**Created By :** National TAB      **Assigned To :** National TAB - Dan Hertenstein  
**Status :** Open  
**Priority :** High      **Asset Tag :**  
**Originated Date :** 08/20/2025 - Mark Johnson - National TAB

Project Issue File Details



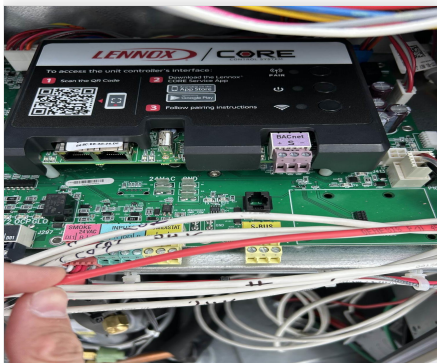


08-18-25 WAWA #6620 ELKTON, VA

**Project Issue Information**

**Issue Name :** RTU 2 - Core Controls  
**Description :** RTU 2's Core control board is not functional. The unit will power on, but the fan remains idle, and parameters cannot be adjusted. Unit cannot be balanced until resolved.  
**Created By :** National TAB                      **Assigned To :** National TAB - Dan Hertenstein  
**Status :** Open  
**Priority :** Urgent                                      **Asset Tag :**  
**Originated Date :** 08/20/2025 - Mark Johnson - National TAB

Project Issue File Details



08/20/2025

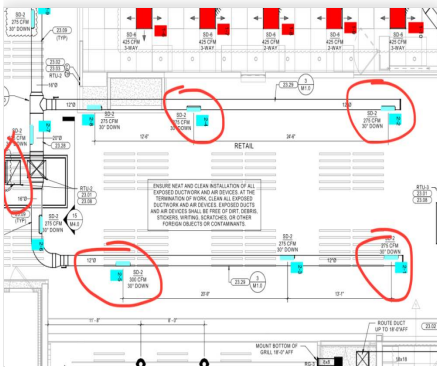


**08-18-25 WAWA #6620 ELKTON, VA**

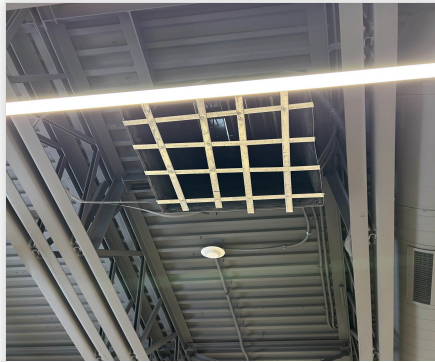
**Project Issue Information**

**Issue Name :** RTU 2 - Missing Supply/Return Grilles  
**Description :** RTU 2 is missing several sidewall grilles along the supply duct, and the return grille. Must be installed to balance the individual diffusers.  
**Created By :** National TAB                      **Assigned To :** National TAB - Dan Hertenstein  
**Status :** Open  
**Priority :** High                                      **Asset Tag :**  
**Originated Date :** 08/20/2025 - Mark Johnson - National TAB

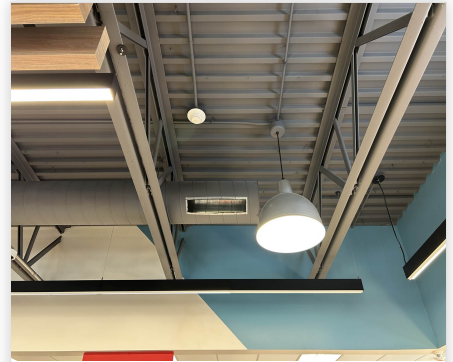
**Project Issue File Details**



08/20/2025



08/20/2025



08/20/2025

**Project Issue Response Details**

- **08/20/2025 National TAB - Mark Johnson**
  - Per GC, missing grilles are on order.



08-18-25 WAWA #6620 ELKTON, VA

Project Issue Information

**Issue Name :** RTU 3 - Space Sensor  
**Description :** RTU 3's space sensor is not functional. Unit does not read space temperature/humidity, and the alarms "74 - Zone Sensor", "93 - Unit Operating in Backup Mode", and "76 - Humidity Sensor" are displaying. Recommend service.  
**Created By :** National TAB      **Assigned To :** National TAB - Dan Hertenstein  
**Status :** Open  
**Priority :** High      **Asset Tag :**  
**Originated Date :** 08/20/2025 - Mark Johnson - National TAB

Project Issue File Details

