

### KEYED NOTES

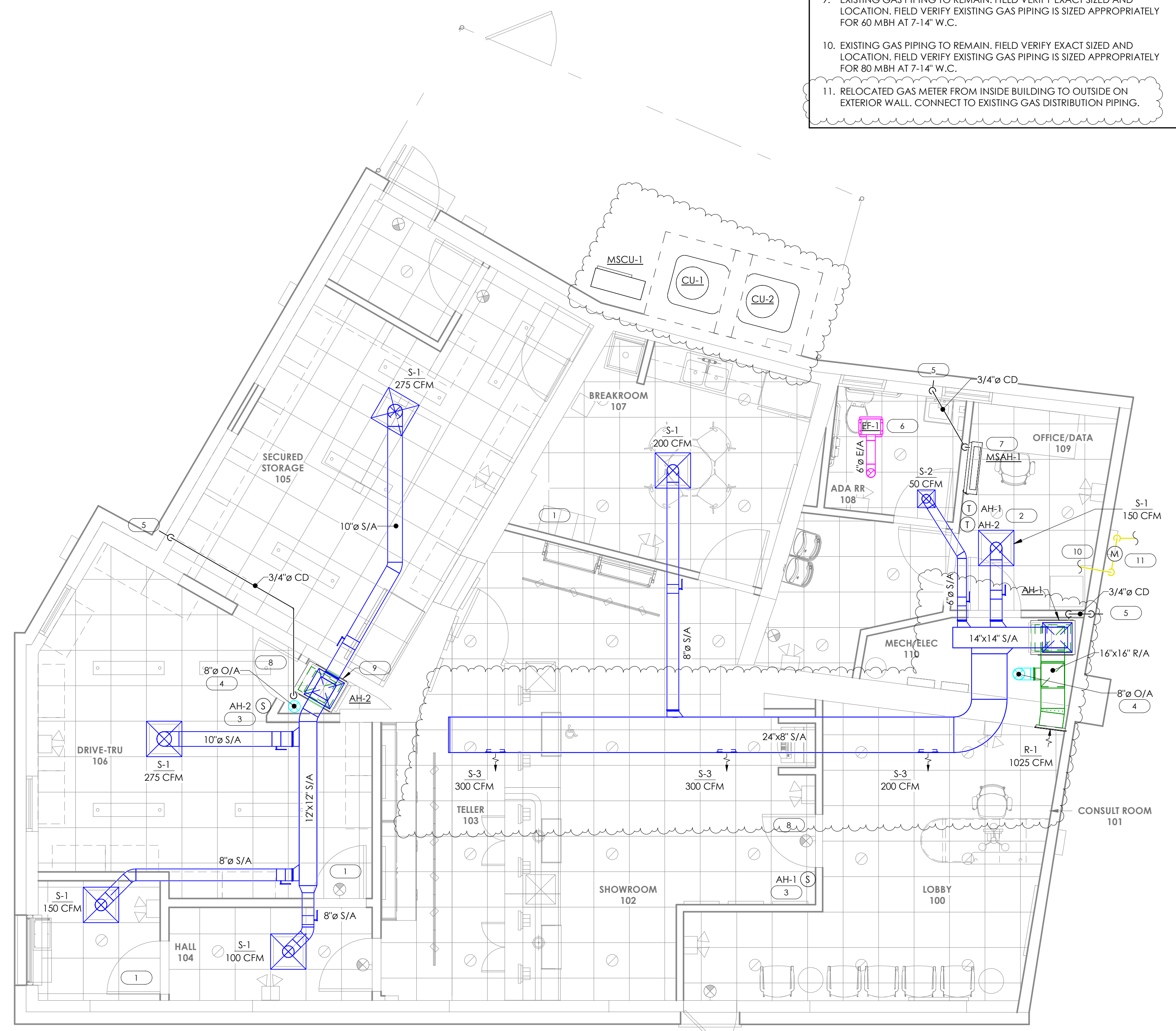
1. PROVIDE 1" UNDERCUT BENEATH DOOR FOR AIRFLOW.
2. PROVIDE AND INSTALL NEW 7-DAY PROGRAMMABLE THERMOSTAT WITH LOCKING COVER. MOUNT THERMOSTAT AT 48" AFF.
3. PROVIDE AND INSTALL NEW TEMPERATURE SENSOR IN LOCATION INDICATED ON PLANS. MOUNT AT 48" AFF.
4. CONNECT FRESH AIR DUCT TO RETURN AIR MAIN. PROVIDE ARD25 MOTORIZED DAMPER (OR EQUAL). INTERLOCK MOTORIZED CONTROL DAMPER WITH AIR HANDLER (SUPPLY FAN ENERGIZED, DAMPER OPEN; SUPPLY FAN DE-ENERGIZED, DAMPER CLOSED; DAMPER FAIL CLOSED). FRESH AIR DUCT TO PENETRATE ABOVE DRIVE THROUGH ROOF, NOT BELOW. BALANCE TO OUTSIDE AIR PROVIDED IN AIR HANDLING UNIT SCHEDULE ON M6.0.
5. TRAP CONDENSATE AT AIR HANDLING UNIT AND ROUTE TO EXTERIOR AS SHOWN. TERMINATE WITH CODE COMPLIANT AIR GAP. SEAL EXTERIOR WALL PENETRATION WEATHER TIGHT. SLOPE HORIZONTAL PIPING AT 1/8" PER FOOT. PROVIDE CONDENSATE PUMP AT UNIT AS REQUIRED.
6. PROVIDE AND INSTALL NEW CEILING MOUNTED EXHAUST FAN PER MANUFACTURER'S RECOMMENDATIONS. ROUTE EXHAUST DUCT UP THRU ROOF AS SHOWN AND TERMINATE WITH GREENHECK MODEL GRSR OR EQUAL ROOF CAP. SEAL PENETRATION WEATHER TIGHT. MAINTAIN MINIMUM 10'-0" CLEARANCE FROM ALL FRESH AIR INTAKES AND 3'-0" FROM OPERABLE BUILDING OPENINGS.
7. INSTALL NEW WALL MOUNTED MINI-SPLIT AIR HANDLER PER MANUFACTURER'S RECOMMENDATIONS.
8. PROVIDE LOUVERED DOOR FOR RETURN AIR PATH TO AH-2. SIZE FOR A MINIMUM OF 800 CFM.
9. EXISTING GAS PIPING TO REMAIN. FIELD VERIFY EXACT SIZED AND LOCATION. FIELD VERIFY EXISTING GAS PIPING IS SIZED APPROPRIATELY FOR 60 MBH AT 7-14" W.C.
10. EXISTING GAS PIPING TO REMAIN. FIELD VERIFY EXACT SIZED AND LOCATION. FIELD VERIFY EXISTING GAS PIPING IS SIZED APPROPRIATELY FOR 80 MBH AT 7-14" W.C.
11. RELOCATED GAS METER FROM INSIDE BUILDING TO OUTSIDE ON EXTERIOR WALL. CONNECT TO EXISTING GAS DISTRIBUTION PIPING.

PROJECT:  
COMMERCIAL DISPENSERY  
FIT-OUT  
TRULIEVE: ATTN. ROBERT JOYCE  
3528 COLUMBIA PARKWAY  
CINCINNATI, OH 45226

PROJECT NUMBER: 24191

**COLWELL GROUP**  
132 CENTRAL STREET, SUITE 203, FOXBOROUGH, MA 02035  
P. 508-241-2122 F. 508-455-4466 WWW.COLWELGROUP.COM

**CORE STATES GROUP**  
212 SE 34TH STREET  
SUITE 2  
BENTONVILLE, AR 72712  
479-866-4400  
WWW.CORE-STATES.COM



**1 MECHANICAL PLAN**  
SCALE: 1/4" = 1'-0"

STAMP:  
STATE OF OHIO  
REGISTERED PROFESSIONAL ENGINEER  
MATHIEW BRYAN LEWIS  
PE-82573  
01/30/25

DESCRIPTION	DATE
Revision 1	01/30/25

DRAWING SCALE: AS NOTED  
DRAWN BY: JLK BY: ZEA  
DRAWING TITLE: MECHANICAL FLOOR PLAN


DRAWING NUMBER: M1.0

PROJECT:  
 COMMERCIAL DISPENSERY  
 FIT-OUT  
 TRULIEVE: ATTN. ROBERT JOYCE  
 3528 COLUMBIA PARKWAY  
 CINCINNATI, OH 45226

PROJECT NUMBER: 24191

**COLWELL GROUP**  
 132 CENTRAL STREET, SUITE 203, FOXBOROUGH, MA 02035  
 P. 508-241-2122 F. 508-455-4466 WWW.COLWELLSGROUP.COM

**CORE STATES GROUP**  
 212 SE 34TH STREET  
 SUITE 2  
 BENHONVILLE, AR 72112  
 479.864.4400  
 WWW.CORE-STATES.COM

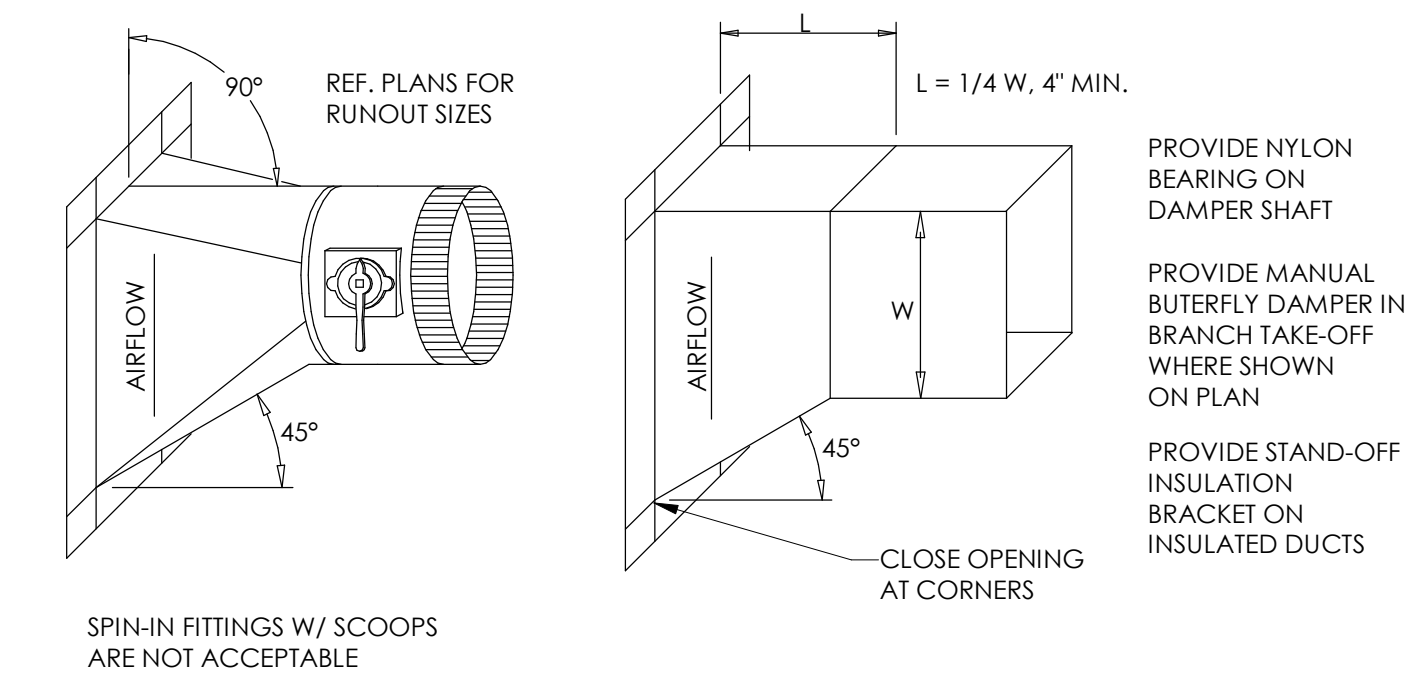
STAMP:  
  
 01/30/25

DESCRIPTION	DATE
Revision 1	01/30/25

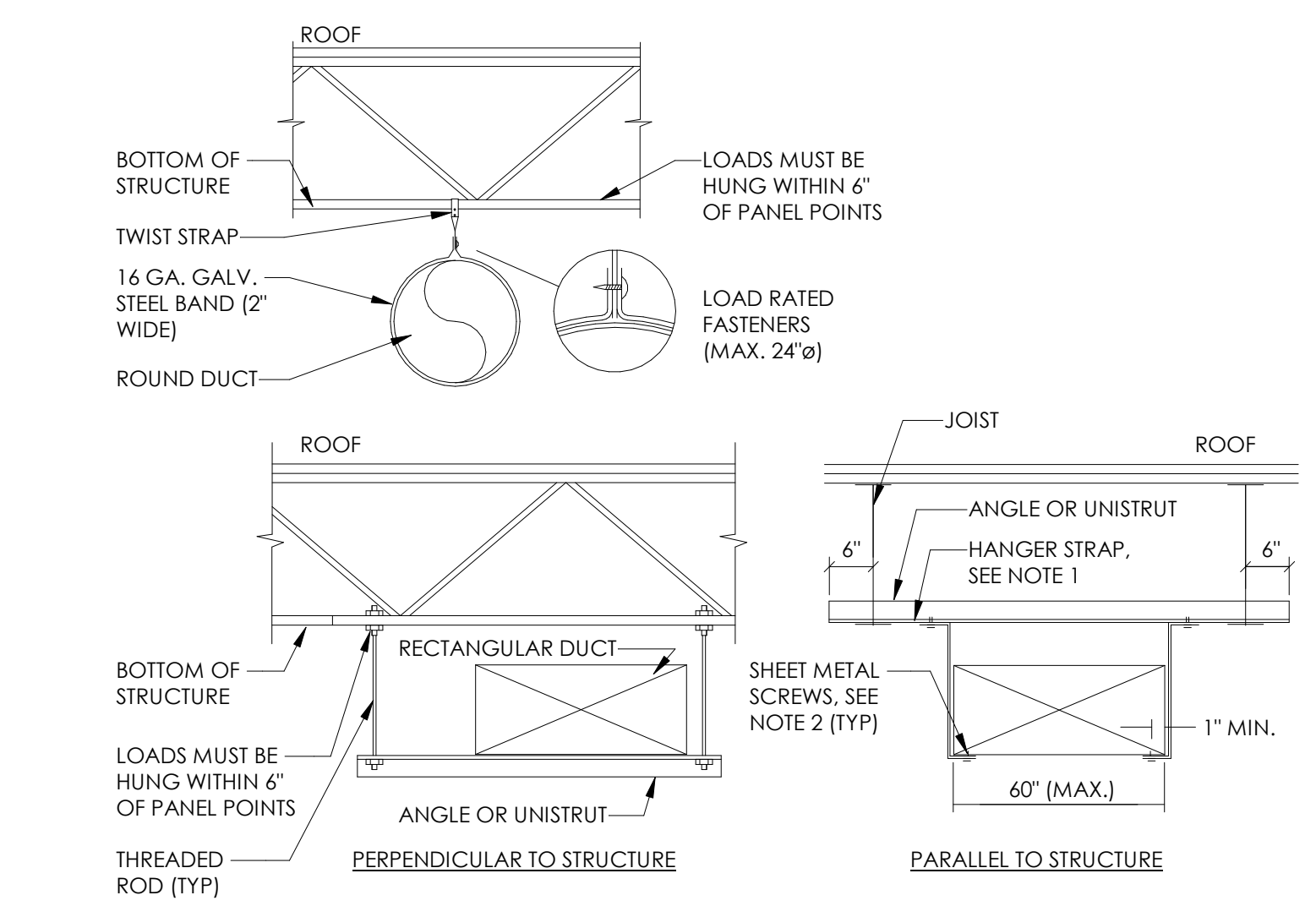
DRAWING SCALE: AS NOTED  
 DRAWN BY: J.L.K. BY: ZEA

DRAWING TITLE: MECHANICAL DETAILS

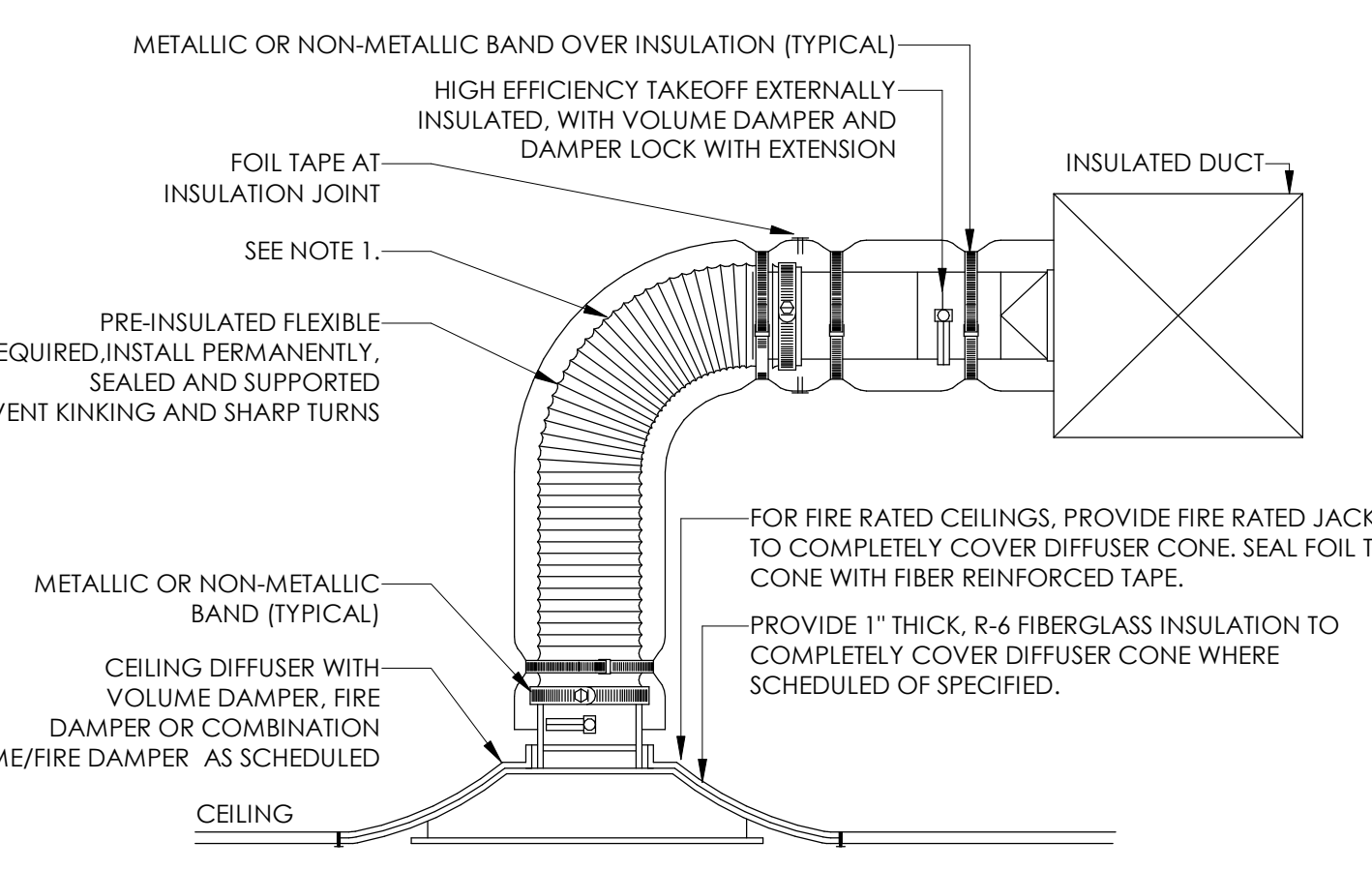
DRAWING NUMBER: M5.0



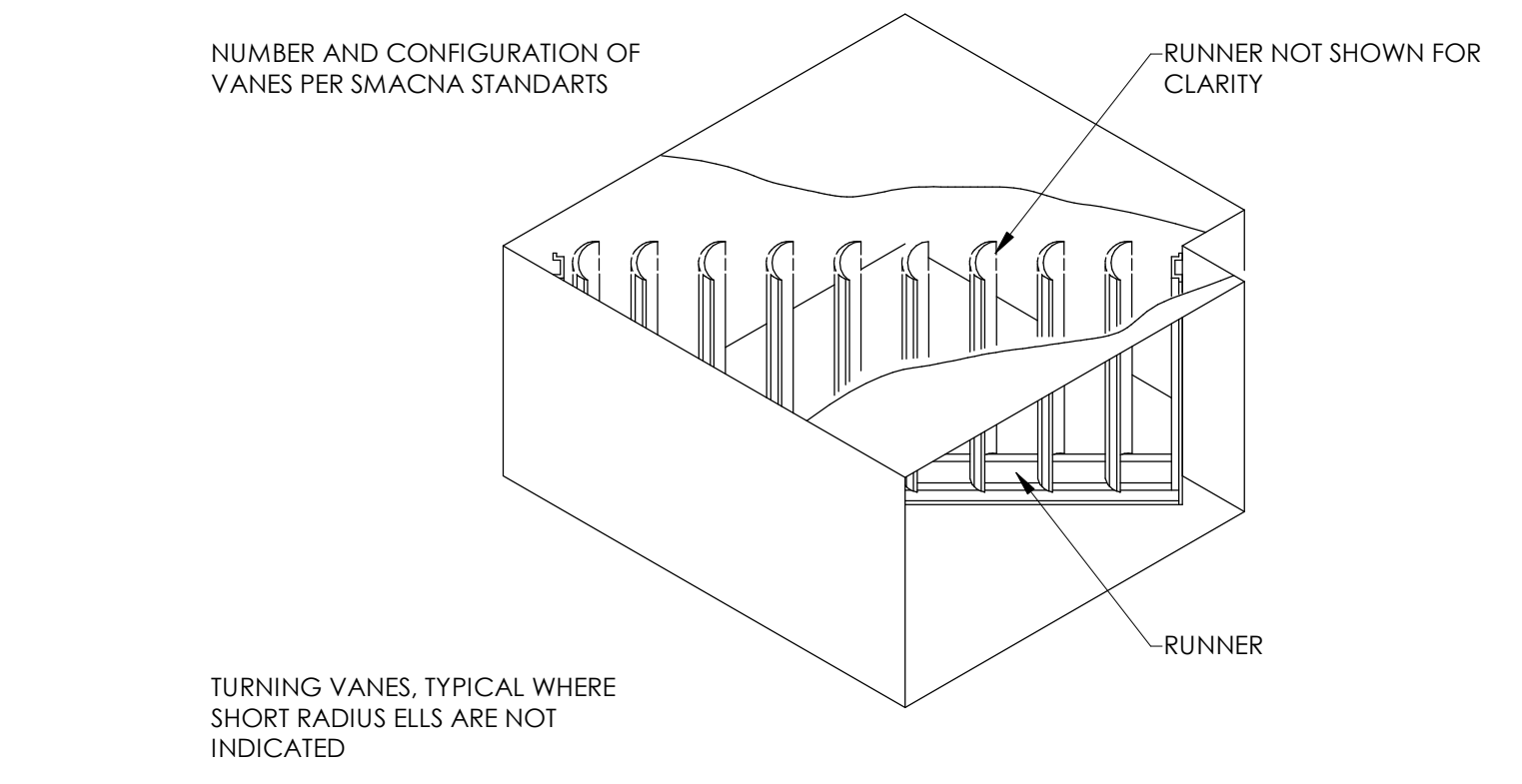
8 BRANCH DUCT FITTING  
 SCALE: N.T.S.



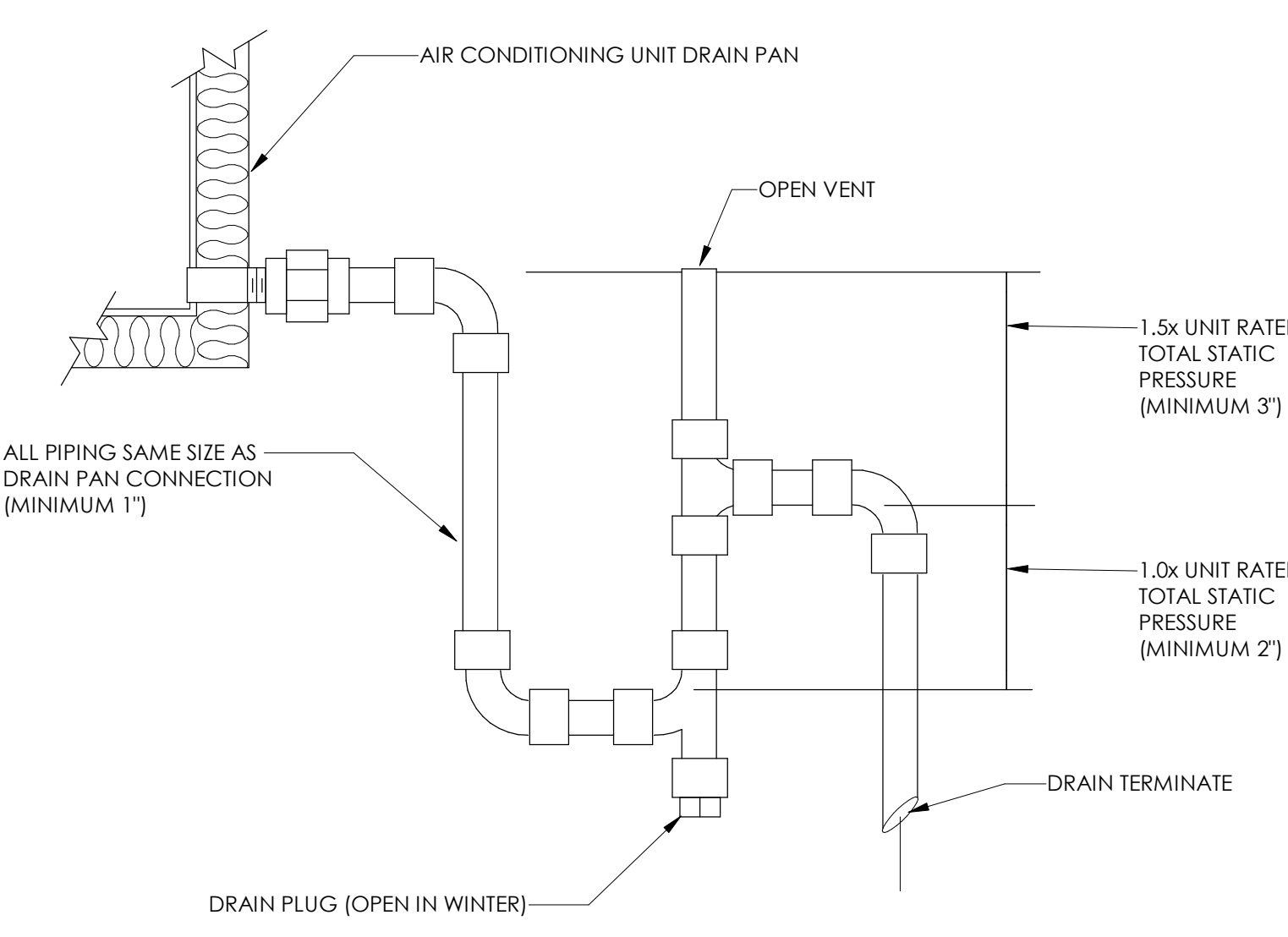
4 DUCT SUPPORT DETAIL  
 SCALE: N.T.S.



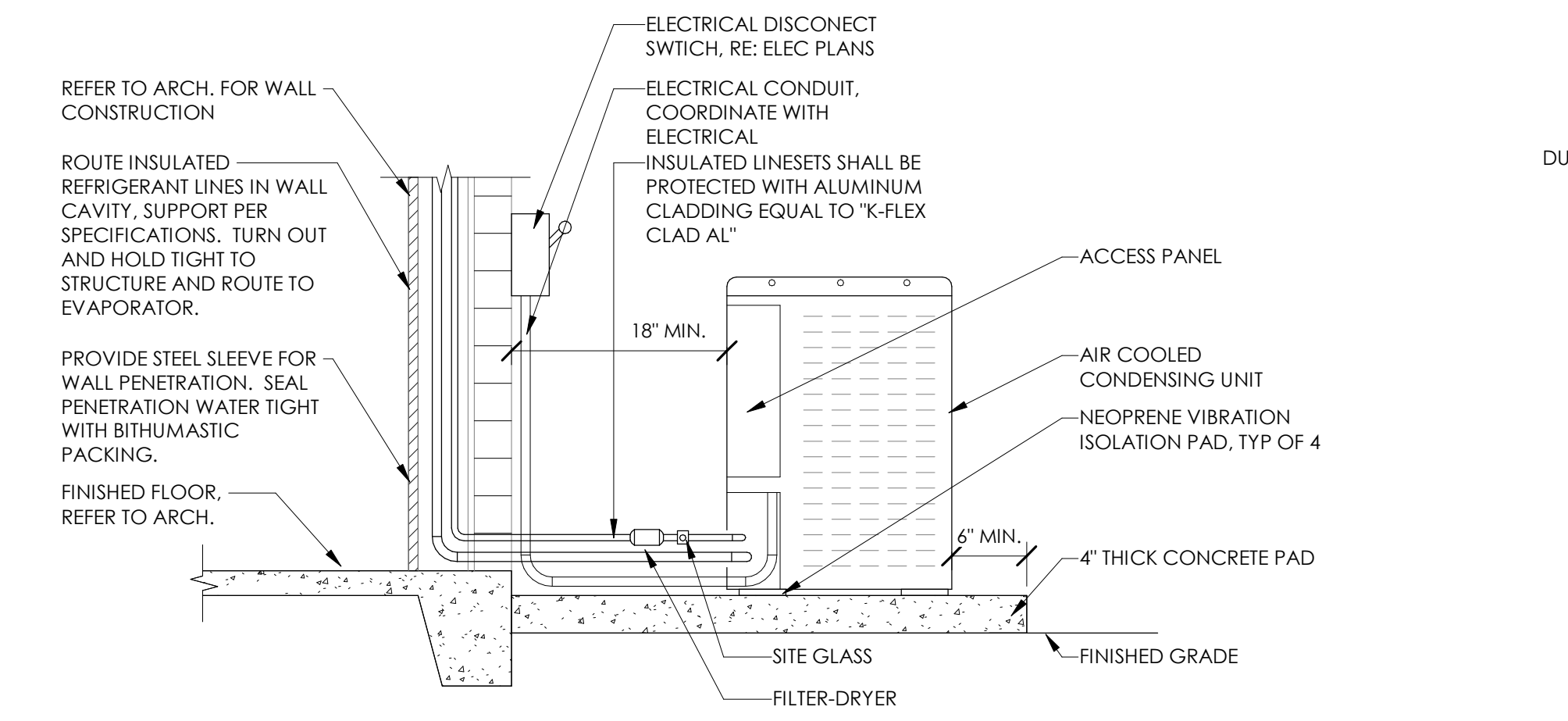
1 LAY-IN CEILING DIFFUSER  
 SCALE: N.T.S.



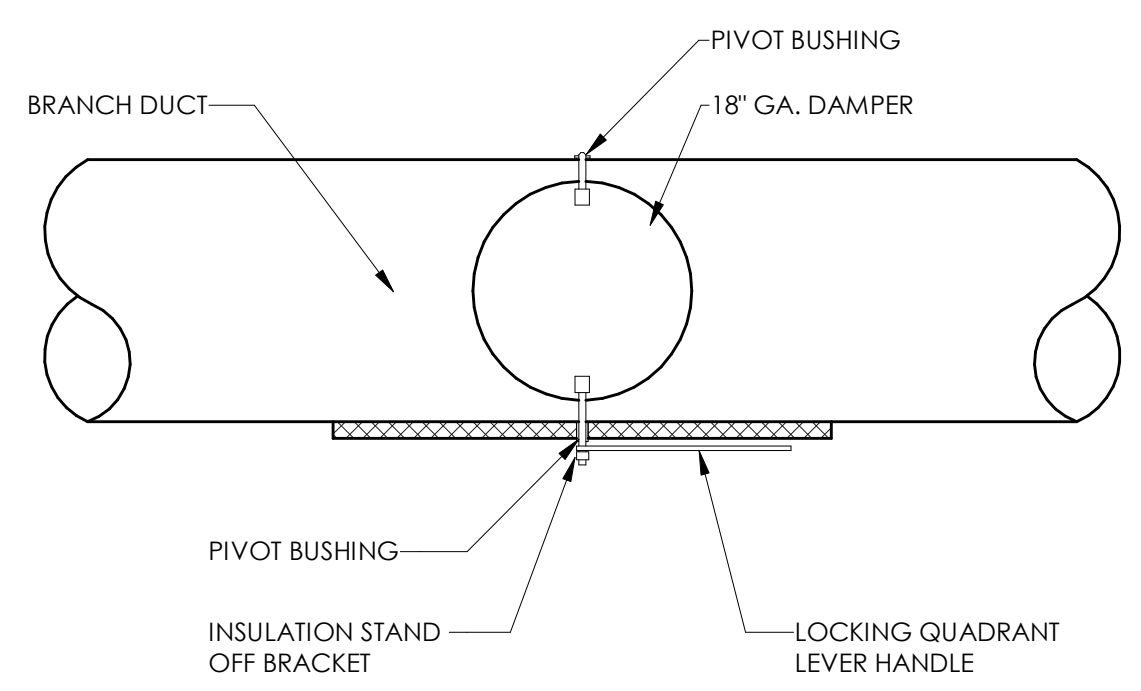
9 TURNING VANE  
 SCALE: N.T.S.



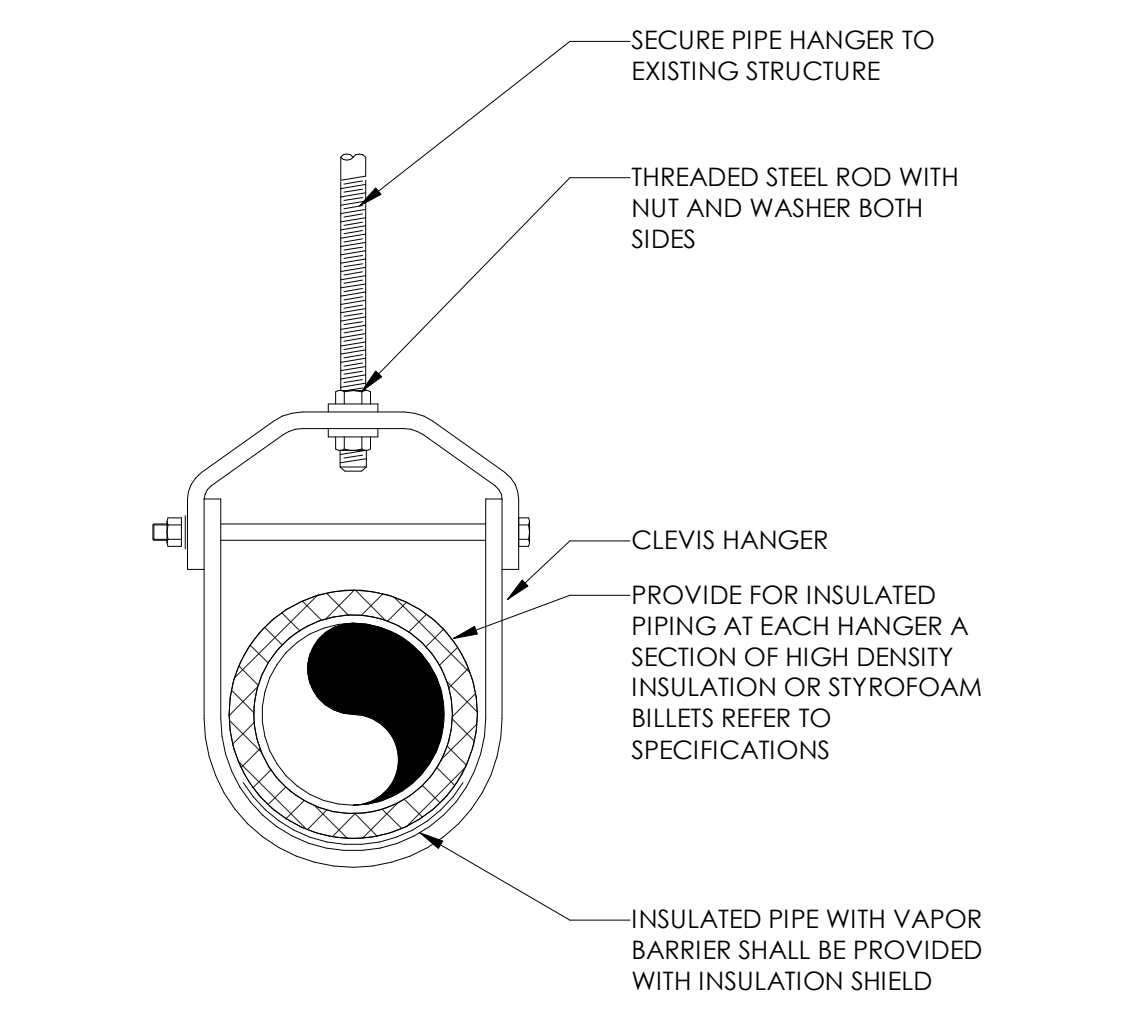
5 COIL CONDENSATE P-TRAP DETAIL  
 SCALE: N.T.S.



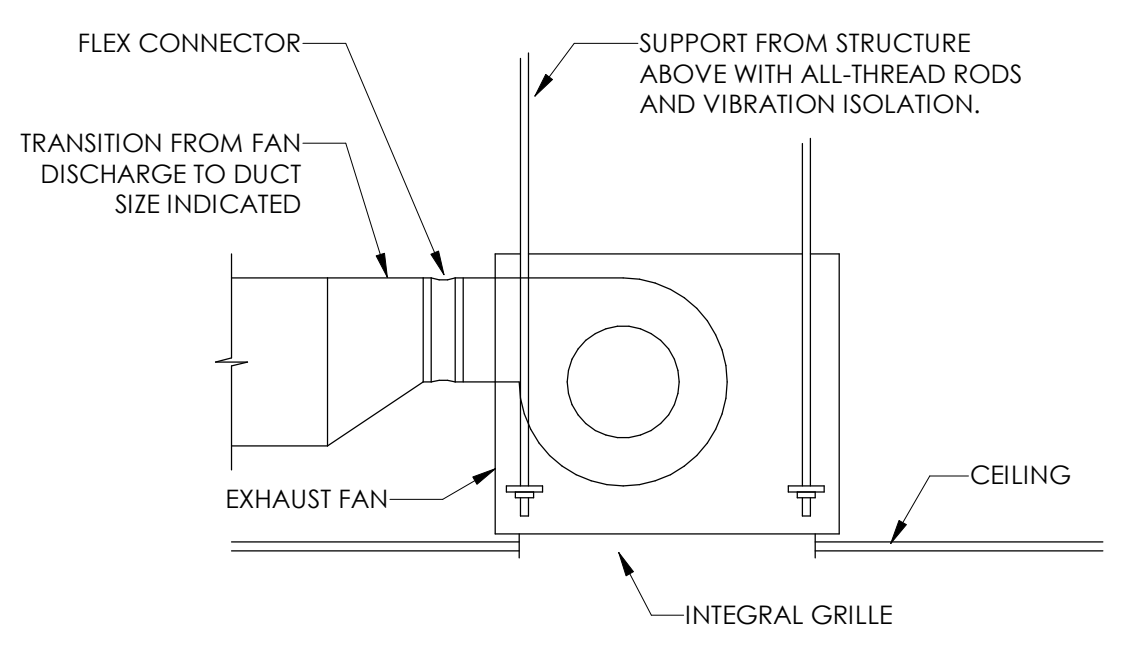
2 CONDENSING UNIT DETAIL  
 SCALE: N.T.S.



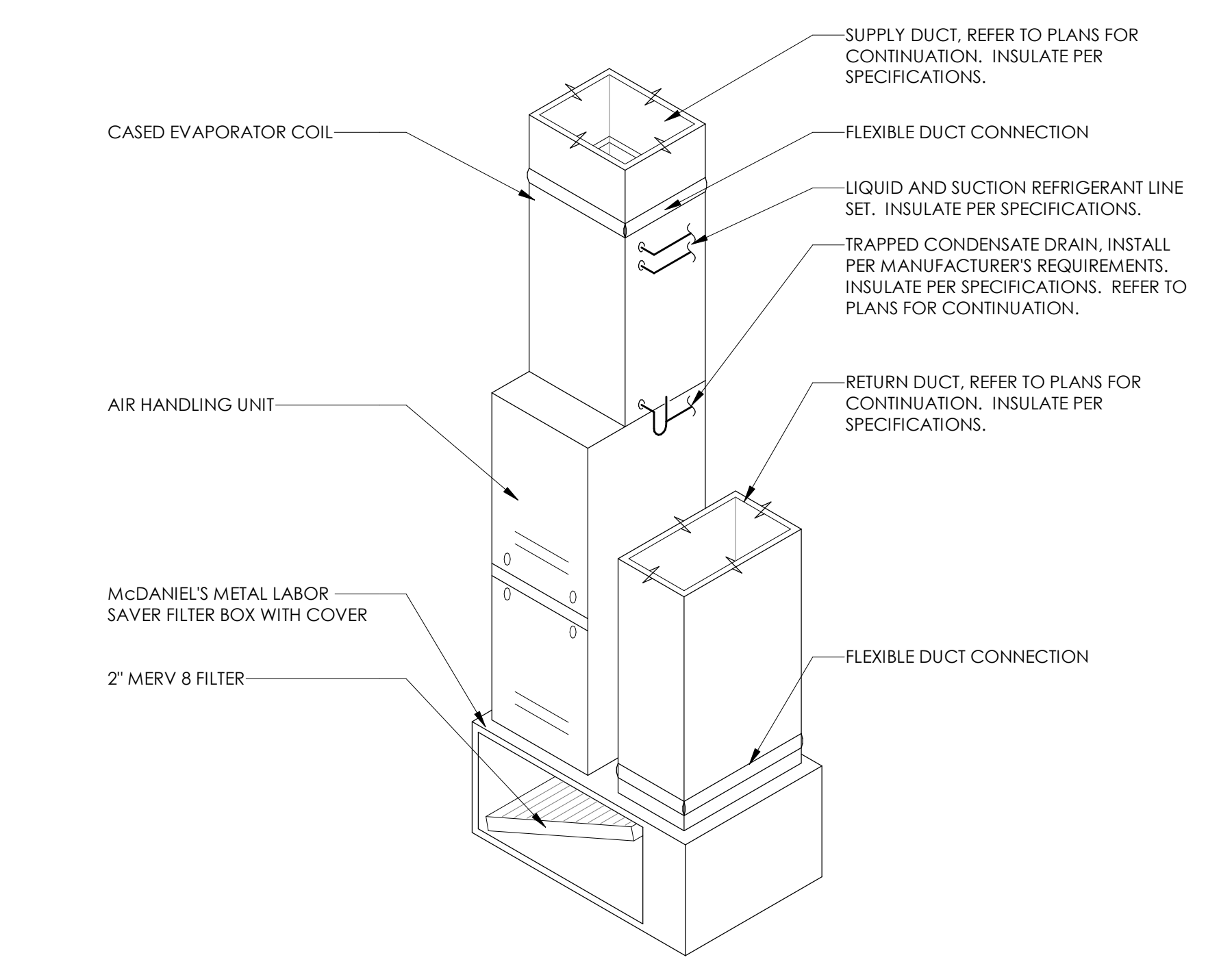
10 MANUAL DAMPER  
 SCALE: N.T.S.



6 PIPE HANGER  
 SCALE: N.T.S.



7 CEILING MOUNTED EXHAUST FAN  
 SCALE: N.T.S.



3 VERTICAL FURNACE DETAIL  
 SCALE: N.T.S.

VENTILATION SCHEDULE - 2024 OHIO MECHANICAL CODE										
ROOM NUMBER	ROOM NAME	OCCUPANCY CLASSIFICATION	AREA (SQ.FT.)	NUMBER OF OCCUPANTS	PEOPLE OUTDOOR AIRFLOW RATE... (CFM/PERSON)	AREA OUTDOOR AIRFLOW RATE (Ra) (CFM/SQ.FT.)	EXHAUST AIRFLOW RATE (CFM/SQ.FT.) (CFM/TOILET)	ZONE AIR DISTRIBUTION EFFECTIVENESS (Ez)	REQUIRED MINIMUM OUTSIDE AIR (CFM)	REQUIRED MINIMUM EXHAUST AIR (CFM)
<b>EX. RTU-1, EX. RTU-2</b>										
100	LOBBY	MAIN ENTRY LOBBIES	249	8	5	0.06	--	0.8	44	--
101	CONSULT ROOM	OFFICE SPACE	51	2	5	0.06	--	0.8	11	--
102	SHOWROOM	RETAIL SALES	238	6	7.5	0.12	--	0.8	59	--
103	TELLER	RETAIL SALES	183	6	7.5	0.12	--	0.8	54	--
104	HALL	COORDINATORS	57	--	--	0.12	--	0.8	6	--
105	SECURED STORAGE	STORAGE ROOMS	549	--	--	0.12	--	0.8	53	--
106	DRIVE-THRU	OFFICE SPACE	101	1	5	0.06	--	0.8	9	--
107	STAFF BREAKROOM	OFFICE SPACE	155	5	5	0.06	--	0.8	28	--
108	ADA RR	PUBLIC RESTROOMS	49	--	--	--	75	--	--	75
110	ELEC/MECH ROOM	STORAGE ROOMS	51	--	--	0.12	--	0.8	5	--
<b>TOTAL:</b>									269	75
<b>MSAH-1</b>										
109	MANAGER'S OFFICE &...	OFFICE SPACE	81	1	5	0.06	--	0.8	10	--
<b>TOTAL:</b>									10	--

MECHANICAL SYMBOLS	
	RECTANGULAR DUCT 18" WIDE BY 12" DEEP (INSIDE CLEAR DIMENSIONS)
	12" DIAMETER ROUND DUCT (INSIDE CLEAR DIMENSIONS)
	SUPPLY DUCT IN SECTION
	RETURN OR EXHAUST DUCT IN SECTION
	ELBOW WITH TURNING VANES
	TEE WITH TURNING VANES
	FIRE DAMPER
	ROUND (OR OVAL) ELBOW
	SUPPLY AIR DIFFUSER WITH ROUND SUPPLY DUCT
	RETURN OR EXHAUST AIR DIFFUSER WITH ROUND DUCT
	DIFFUSER OR GRILLE TYPE & CFM
	THERMOSTAT
	TEMPERATURE SENSOR
	CO2 SENSOR
	SMOKE DETECTOR
	CONDENSER WATER SUPPLY
	CONDENSER WATER RETURN
	CONDENSATE
	MANUAL BALANCE DAMPER

GENERAL MECHANICAL NOTES	
A.	EACH CONTRACTOR IS RESPONSIBLE FOR HAVING THOROUGH KNOWLEDGE OF ALL DRAWINGS AND SPECIFICATIONS AS THEY RELATE TO THIS WORK. NO ADDITIONAL COMPENSATION SHALL BE ALLOWED DUE TO LACK OF THIS KNOWLEDGE. PROVIDE ALL MATERIALS FOR A COMPLETE INSTALLATION IN ALL RESPECTS READY FOR INTENDED USE AND IN STRICT ACCORDANCE WITH STATE AND LOCAL CODES AND MANUFACTURER'S RECOMMENDATIONS.
B.	COORDINATE WORK WITH ALL OTHER TRADES AND DRAWINGS TO DETERMINE INTERFACE REQUIREMENTS NECESSARY TO PROPERLY INTEGRATE ALL MAJOR BUILDING SYSTEMS.
C.	THE DRAWINGS ARE SCHEMATIC ONLY AND THE CONTRACTOR SHALL MAKE ADJUSTMENTS FOR SPACE REQUIREMENTS AND CONFLICTS WITH OTHER TRADES AND SHALL OBTAIN APPROVAL FROM THE ARCHITECT FOR ANY VARIATION FROM THE INDICATED LOCATIONS.
D.	ALL EQUIPMENT AND SYSTEMS CALLED FOR SHALL BE INSTALLED BY EXPERIENCED CRAFTSMEN AND SHALL INCLUDE ALL NECESSARY DEVICES, APPURTENANCE AND EQUIPMENT FOR A COMPLETE WORKABLE SYSTEM. ALL SYSTEMS AND EQUIPMENT SHALL BE GUARANTEED AND FREE FROM DEFECTS IN MATERIAL AND WORKMANSHIP FOR TIME PERIODS OF GUARANTEE AS SPECIFICALLY CALLED FOR OR FOR A MINIMUM TIME OF ONE YEAR WHERE NO TIME LIMIT IS SET FORTH.
E.	SPRINKLER HEAD AND LIGHTING FIXTURE LOCATIONS TAKE PRECEDENCE OVER DIFFUSER LOCATIONS. COORDINATE WITH ELECTRICAL CONTRACTOR AND FIRE PROTECTION CONTRACTOR.
F.	DUCTWORK IDENTIFICATION AND INSTALLATION TO ADHERE TO GOVERNING CODES.
G.	INSULATE ALL ROUND DUCTS ABOVE CEILING EXTERNALLY WITH 2" FIBERGLASS INSULATION WITH VAPOR BARRIER. SPIRAL DUCT TO BE INTERNALLY INSULATED WITH 1" THICK LINER. TAPE ALL JOINTS. ALL DUCT SIZES SHOWN ARE NET CLEAR DIMENSIONS. CONTRACTOR TO INCREASE SIZE FOR LINER AS REQUIRED. INSULATE ALL RECTANGULAR DUCT WITH 1" THICK 1-1/2LB. DENSITY DUCT LINER.
H.	FLEXIBLE DUCTWORK MAINS ARE NOT PERMITTED. PROVIDE MAXIMUM 5'-0" FLEXIBLE DUCT CONNECTIONS TO CEILING DIFFUSERS.
I.	TYPICAL BRANCH FITTING DETAILS ARE APPLICABLE THROUGHOUT.
J.	FURNISH AND INSTALL VOLUME/BALANCE DAMPERS AT ALL BRANCH DUCTS TO DIFFUSERS. PROVIDE ACCESS DOORS AS REQUIRED.
K.	PROVIDE FIRE SEAL WHERE PIPING AND DUCTWORK PENETRATE FIRE RATED ASSEMBLY.
L.	PROVIDE SEISMIC BRACING BASED ON APPROPRIATE SEISMIC ZONE REQUIREMENTS PER SMACNA PUBLISHED SEISMIC DETAILS, LOCAL AND NATIONAL CODES. CONTRACTOR'S RESPONSIBILITY INCLUDES STRUCTURAL ENGINEER'S CERTIFICATION ON DETAILS SUBMITTED FOR PERMITTING.
M.	ALL TEMPERATURE SENSORS, FAN SWITCHES, AND SPEED CONTROLS SHALL BE MOUNTED 42 INCHES ABOVE THE FLOOR FOR ADA ACCESSIBILITY.
N.	PROVIDE A COMPLETE TEST AND BALANCE FOR HVAC SYSTEM. AIR BALANCE SHALL BE WITHIN 5% OF SCHEDULED AIRFLOWS.

PROJECT:	
COMMERCIAL DISPENSERY FIT-OUT	
TRULIEVE: ATTN. ROBERT JOYCE	
3528 COLUMBIA PARKWAY	
CINCINNATI, OH 45226	

PROJECT NUMBER:	24191
-----------------	-------

**COLWELL GROUP**

132 CENTRAL STREET, SUITE 203, FOXBOROUGH, MA 02035  
P. 508-241-5122 F. 508-455-4466 WWW.COLWELGROUP.COM

**CORE STATES GROUP**

212 SE 34TH STREET  
SUITE 2  
BENTONVILLE, AR 72712  
479-864-4400  
WWW.CORE-STATES.COM

EXHAUST FAN SCHEDULE										
MARK	MANUFACTURER	MODEL	CFM	E.S.P. (IN. W.C.)	FAN RPM	ELECTRICAL DATA				WEIGHT (LBS)
						MOTOR POWER (HP)	V/PH	MCA	MOCP	
EF-1	GREENHECK	SP-A90	75	0.1	720	<0.01	120/1	0.2	15	12

GENERAL NOTES:  
1. CONTRACTOR SHALL CHOOSE SCHEDULED UNIT OR APPROVED EQUAL. IF ALTERNATE EQUIPMENT IS USED, THE CONTRACTOR WILL BE RESPONSIBLE FOR ANY REQUIRED DESIGN CHANGES RESULTING FROM PHYSICAL VARIATIONS IN SIZE, WEIGHT, AND/OR POWER REQUIREMENTS.  
2. PROVIDE WITH GRAVITY BACKDRAFT DAMPER AND INSECT SCREEN.  
3. FAN TO BE CONTROLLED THROUGH SPACE LIGHTING CONTROLS. REFERENCE ELECTRICAL SHEETS.  
4. PROVIDE WITH FAN SPEED CONTROLLER.

MINI-SPLIT UNIT SCHEDULE											
MARK	MANUFACTURER	MODEL	CFM	COOLING PERFORMANCE			ELECTRICAL DATA				WEIGHT (LBS)
				RATED CAPACITY (MBH)	SENSIBLE CAPACITY (MBH)	SEER2	V/PH	MCA	MOCP		
MSAH-1	MITSUBISHI	PKA-A18HA7	400	--	--	--	--	--	--	29	
MSCU-1	MITSUBISHI	PUY-18NKA7	--	18	12.3	18.5	240/1	11	28	99	

GENERAL NOTES:  
1. CONTRACTOR SHALL CHOOSE SCHEDULED UNIT OR APPROVED EQUAL. IF ALTERNATE EQUIPMENT IS USED, THE CONTRACTOR WILL BE RESPONSIBLE FOR ANY REQUIRED DESIGN CHANGES RESULTING FROM PHYSICAL VARIATIONS IN SIZE, WEIGHT, AND/OR POWER REQUIREMENTS.  
2. PERFORMANCE SHALL COMPLY WITH AHRI 210/240 STANDARDS.  
3. PROVIDE WITH WALL MOUNTED WIRED THERMOSTAT.  
4. AIR HANDLER SHALL BE PROVIDED WITH FACTORY CONDENSATE PUMP; BLUE DIAMOND X87-721.  
5. PROVIDE WITH REFRIGERANT LINESET.  
6. MSAH-1 POWERED BY MSCU-1 THROUGH FIELD SUPPLIED INTERCONNECTED WIRING.

AIR DEVICE SCHEDULE				
MARK	MANUFACTURER	MODEL	DESCRIPTION	FACE SIZE (DUCT SIZE)
R-1	TITUS	350FL	ALUMINUM LOUVERED RETURN GRILLE	20x20
S-1	TITUS	TMS-AA	ALUMINUM THREE CONE DIFFUSER	24x24
S-2	TITUS	TMS-AA	ALUMINUM THREE CONE DIFFUSER	12x12
S-3	TITUS	272FL	AEROBLADE DOUBLE DEFLECTION SUPPLY	12x6

GENERAL NOTES:  
1. CONTRACTOR SHALL CHOOSE SCHEDULED UNIT OR APPROVED ALTERNATE OF EQUAL PERFORMANCE.  
2. PROVIDE WITH STANDARD WHITE FINISH.  
3. PROVIDE WITH NECK FOR DUCT CONNECTION.  
4. NECK SIZE SHALL MATCH BRANCH DUCT SIZE.

CONDENSING UNIT SCHEDULE										
MARK	MANUFACTURER	MODEL	COOLING CAPACITY (MBH)	SEER2	ELECTRICAL DATA				WEIGHT (LBS)	
					V/PH	MCA	MOCP			
CU-1	TRANE	4TR6036	34.2	16	240/1	18	30	292		
CU-2	TRANE	4TR6024	25.3	16	240/1	13.4	20	244		

GENERAL NOTES:  
1. CONTRACTOR SHALL CHOOSE SCHEDULED UNIT OR ENGINEER APPROVED ALTERNATE OF EQUAL PERFORMANCE BY DAIKIN, YORK, CARRIER, OR LENNOX. THE CONTRACTOR WILL BE RESPONSIBLE FOR ANY REQUIRED DESIGN CHANGES RESULTING FROM VARIATIONS IN UNIT SIZE, WEIGHT, AND/OR POWER REQUIREMENTS.  
2. PERFORMANCE SHALL COMPLY WITH AHRI 210/240 STANDARDS.

AIR HANDLING UNIT SCHEDULE													
MARK	MANUFACTURER	MODEL	FAN PERFORMANCE			COOLING PERFORMANCE		HEATING PERFORMANCE		ELECTRICAL DATA			
			CFM	OSA (CFM)	E.S.P. (IN. W.C.)	TOTAL CAPACITY	SENSIBLE (MBH)	TYPE	CAPACITY (MBH)	V/PH	MCA	MOCP	WEIGHT (LBS)
AH-1	TRANE	S9V28080U4	1200	175	0.5	34.2	28.3	NG	80	120/1	13	15	144
AH-2	TRANE	S9V28060U4	800	100	0.5	24.5	18.1	NG	60	120/1	11	15	122

GENERAL NOTES:  
1. CONTRACTOR SHALL CHOOSE SCHEDULED UNIT OR ENGINEER APPROVED ALTERNATE OF EQUAL PERFORMANCE BY DAIKIN, YORK, CARRIER, OR LENNOX. THE CONTRACTOR WILL BE RESPONSIBLE FOR ANY REQUIRED DESIGN CHANGES RESULTING FROM VARIATIONS IN UNIT SIZE, WEIGHT, AND/OR POWER REQUIREMENTS.  
2. PERFORMANCE SHALL COMPLY WITH AHRI 210/240 STANDARDS.  
3. PROVIDE 7-DAY PROGRAMMABLE THERMOSTAT WITH AUTO-CHANGE OVER.  
4. PROVIDE WITH CONDENSATE PUMP.

STAMP:

DESCRIPTION	DATE
Revision 1	01/30/25

DRAWING SCALE:	AS NOTED
DRAWN BY:	JLK
CHECKED BY:	ZEA
DRAWING TITLE: MECHANICAL SCHEDULES, LEGEND & NOTES	

DRAWING NUMBER:	M6.0
-----------------	------

**DIVISION 15**

**15A: GENERAL**

**15A 1-1 GENERAL REQUIREMENTS**

REQUIREMENTS UNDER DIVISION ONE AND THE GENERAL AND SUPPLEMENTARY CONDITIONS OF THESE SPECIFICATIONS SHALL BE A PART OF THIS SECTION. CONTRACTOR SHALL BECOME THOROUGHLY ACQUAINTED WITH ITS CONTENTS AS TO REQUIREMENTS THAT AFFECT THIS DIVISION OR SECTION. THE WORK REQUIRED UNDER THIS SECTION INCLUDES MATERIAL, EQUIPMENT, APPLIANCES, TRANSPORTATION, SERVICES, AND LABOR REQUIRED TO COMPLETE THE ENTIRE SYSTEM AS REQUIRED BY DRAWINGS AND SPECIFICATIONS.

THE SPECIFICATIONS AND DRAWINGS FOR THE PROJECT ARE COMPLEMENTARY, AND PORTIONS OF THE WORK DESCRIBED IN ONE SHALL BE PROVIDED AS IF DESCRIBED IN BOTH. IN THE EVENT OF DISCREPANCIES, NOTIFY THE ENGINEER AND/OR OWNER AND REQUEST CLARIFICATION PRIOR TO PROCEEDING WITH THE WORK INVOLVED.

**15A 1-2 INSPECTION OF SITE**

PRIOR TO SUBMITTING BID, VISIT THE SITE OF THE PROPOSED WORK AND BECOME FULLY INFORMED AS TO THE CONDITIONS UNDER WHICH THE WORK IS TO BE DONE. FAILURE TO DO SO WILL NOT BE CONSIDERED SUFFICIENT JUSTIFICATION TO REQUEST OR OBTAIN EXTRA COMPENSATION OVER AND ABOVE THE CONTRACT PRICE.

**15A 1-3 MATERIAL AND WORKMANSHIP**

PROVIDE NEW MATERIAL, EQUIPMENT, AND APPARATUS UNDER THIS CONTRACT UNLESS OTHERWISE STATED HEREIN, OF BEST QUALITY NORMALLY USED FOR THE PURPOSE IN GOOD COMMERCIAL PRACTICE, AND FREE FROM ANY DEFECTS. MODEL NUMBERS LISTED IN THE SPECIFICATIONS OR SHOWN ON THE DRAWINGS ARE NOT NECESSARILY INTENDED TO DESIGNATE THE REQUIRED TRIM, WRITTEN DESCRIPTION OF THE OF THE TRIM GOVERN MODEL NUMBERS.

WORK PERFORMED UNDER THIS CONTRACT SHALL PROVIDE A NEAT AND "WORKMANLIKE" APPEARANCE WHEN COMPLETED, TO THE SATISFACTION OF THE ARCHITECT AND ENGINEER. WORKMANSHIP SHALL BE THE FINEST POSSIBLE BY EXPERIENCED MECHANICS. INSTALLATIONS SHALL COMPLY WITH APPLICABLE CODES AND LAWS.

THE COMPLETE INSTALLATION SHALL FUNCTION AS DESIGNED AND INTENDED WITH RESPECT TO EFFICIENCY, CAPACITY, NOISE LEVEL, ECT. ABNORMAL NOISE CAUSED BY RATTLING EQUIPMENT, PIPING, DUCTS, AIR DEVICES, AND SQUEAKS IN MOVING COMPONENTS WILL NOT BE ACCEPTABLE. IN GENERAL, MATERIALS AND EQUIPMENT SHALL BE OF COMMERCIAL SPECIFICATION GRADE IN QUALITY. LIGHT DUTY AND RESIDENTIAL TYPE EQUIPMENT WILL NOT BE ACCEPTED.

REMOVE FROM THE PREMISES WASTE MATERIAL PRESENT AS A RESULT OF WORK, INCLUDING CARTONS, CRATING, PAPER, AND STICKERS, ETC. CLEAN EQUIPMENT INSTALLED UNDER THIS CONTRACT TO PRESENT A NEAT AND CLEAN INSTALLATION AT THE TERMINATION OF THE WORK.

REPAIR OR REPLACE PUBLIC AND PRIVATE PROPERTY DAMAGED AS A RESULT OF WORK PERFORMED UNDER THIS CONTRACT TO THE SATISFACTION OF AUTHORITIES AND REGULATIONS HAVING JURISDICTION.

**15A 1-4 COORDINATION**

COORDINATE WORK WITH THAT OF OTHER TRADES SO THAT THE VARIOUS COMPONENTS OF THE SYSTEMS WILL BE INSTALLED AT THE PROPER TIME, WILL FIT THE AVAILABLE SPACE, AND WILL ALLOW PROPER SERVICE ACCESS TO THOSE ITEMS REQUIRING MAINTENANCE. COMPONENTS WHICH ARE INSTALLED WITHOUT REGARD TO THE ABOVE SHALL BE RELOCATED AT NO ADDITIONAL COST TO THE OWNER.

UNLESS OTHERWISE INDICATED, THE GENERAL CONTRACTOR WILL PROVIDE CHASES AND OPENINGS IN BUILDING CONSTRUCTION REQUIRED FOR INSTALLATION OF THE SYSTEMS SPECIFIED HEREIN. CONTRACTOR SHALL TAKE HIS OWN MEASUREMENTS AT THE BUILDING, AS VARIATIONS MAY OCCUR. CONTRACTOR WILL BE HELD RESPONSIBLE FOR ERRORS THAT COULD HAVE BEEN AVOIDED BY PROPER CHECKING AND INSPECTION.

PROVIDE MATERIALS WITH TRIM THAT WILL PROPERLY FIT THE TYPES OF CEILING, WALL, OR FLOOR FINISHES ACTUALLY INSTALLED. MODEL NUMBERS LISTED IN THE SPECIFICATIONS OR SHOWN ON THE DRAWINGS ARE NOT INTENDED TO DESIGNATE THE REQUIRED TRIM.

**15A 1-5 ORDINANCES AND CODES**

WORK PERFORMED UNDER THIS CONTRACT SHALL, AT MINIMUM, BE IN CONFORMANCE WITH APPLICABLE NATIONAL, STATE AND LOCAL CODES HAVING JURISDICTION. EQUIPMENT FURNISHED AND ASSOCIATED INSTALLATION WORK PERFORMED UNDER THIS CONTRACT SHALL BE IN STRICT COMPLIANCE WITH CURRENT APPLICABLE CODES ADOPTED BY THE LOCAL AUTHORITY HAVING JURISDICTION INCLUDING ANY AMENDMENTS AND STANDARDS AS SET FORTH BY THE NATIONAL FIRE PROTECTION ASSOCIATION (NFPA), UNDERWRITERS LABORATORIES (UL), OCCUPATIONAL SAFETY AND HEALTH ADMINISTRATION (OSHA), AMERICAN SOCIETY OF MECHANICAL ENGINEERS (ASME), AMERICAN SOCIETY OF HEATING, REFRIGERATION, AND AIR CONDITIONING ENGINEERS (ASHRAE), AMERICAN NATIONAL STANDARDS INSTITUTE (ANSI), AMERICAN SOCIETY OF TESTING MATERIALS (ASTM) AND OTHER NATIONAL STANDARDS AND CODES WHERE APPLICABLE. WHERE THE CONTRACT DOCUMENTS EXCEED THE REQUIREMENTS OF THESE REFERENCED CODES, STANDARDS, ETC., THE CONTRACT DOCUMENTS SHALL TAKE PRECEDENCE.

PROCURE AND PAY FOR PERMITS AND LICENSES REQUIRED FOR THE ACCOMPLISHMENT OF THE WORK HEREIN DESCRIBED, WHERE REQUIRED. OBTAIN, PAY FOR AND FURNISH CERTIFICATES OF INSPECTION TO OWNER. CONTRACTOR WILL BE HELD RESPONSIBLE FOR VIOLATIONS OF THE LAW.

**15A 1-6 PROTECTION OF EQUIPMENT AND MATERIALS**

STORE AND PROTECT FROM DAMAGE EQUIPMENT AND MATERIALS DELIVERED TO JOB SITE. COVER WITH WATERPROOF, TEAR-RESISTANT, HEAVY TARP OR POLYETHYLENE PLASTIC AS REQUIRED TO PROTECT FROM PLASTER, DIRT, PAINT, WATER, OR PHYSICAL DAMAGE. EQUIPMENT AND MATERIAL THAT HAS BEEN DAMAGED BY CONSTRUCTION ACTIVATES WILL BE REJECTED, AND CONTRACTOR IS OBLIGATED TO FURNISH NEW EQUIPMENT AND MATERIAL OF A LIKE KIND.

KEEP PREMISES ROOM CLEAN FROM FOREIGN MATERIAL CREATED DURING WORK PERFORMED UNDER THIS CONTRACT. PIPING, EQUIPMENT, ETC., SHALL HAVE A NEAT AND CLEAN APPEARANCE AT THE TERMINATION OF THE WORK.

PLUG OR CAP OPEN ENDS OF DUCTWORK AND PIPING SYSTEMS WHILE STORED OR INSTALLED DURING CONSTRUCTION WHEN NOT IN USE TO PREVENT THE ENTRANCE OF DEBRIS INTO THE SYSTEMS.

KEEP THE MANUFACTURER PROVIDED PROTECTIVE COVERING ON FLOOR DRAINS, FLOOR SINKS, AND TRENCH DRAINS DURING CONSTRUCTION. REMOVE COVERINGS AT THE TERMINATION OF THE WORK AND POLISH EXPOSED SURFACES.

**15A 1-7 OPERATION AND MAINTENANCE INSTRUCTIONS**

COLLECT AND COMPILE A COMPLETE BROCHURE OF FIXTURES, MATERIALS, AND EQUIPMENT FURNISHED AND INSTALLED ON THIS PROJECT. INCLUDE OPERATIONAL AND MAINTENANCE INSTRUCTIONS, MANUFACTURER'S CATALOG SHEETS, WIRING DIAGRAMS, PARTS LISTS, APPROVED SHOP DRAWINGS, AND DESCRIPTIVE LITERATURE FURNISHED BY THE MANUFACTURER. INCLUDE AN INSIDE COVER SHEET THAT LISTS THE PROJECT NAME, DATE, OWNER, ARCHITECT, ENGINEER, GENERAL CONTRACTOR, SUBCONTRACTOR, AND AN INDEX OF CONTENTS.

SUBMIT COPIES OF LITERATURE BOUND IN APPROVED BINDERS TO THE ARCHITECT AND OWNER AT THE TERMINATION OF THE WORK. PAPER CLIPS, STAPLES, RUBBER BANDS, AND MAILING ENVELOPES ARE NOT CONSIDERED APPROVED BINDERS. FINAL APPROVAL OF PLUMBING SYSTEMS WILL BE WITHHELD UNTIL THIS EQUIPMENT BROCHURE IS DEEMED COMPLETE BY THE ARCHITECT, ENGINEER, AND OWNER.

**15A 1-8 WARRANTIES**

WARRANT EACH SYSTEM AND EACH ELEMENT THEREOF AGAINST ALL DEFECTS DUE TO FAULTY WORKMANSHIP, DESIGN OR MATERIAL FOR A PERIOD OF 12 MONTHS FROM DATE OF SUBSTANTIAL COMPLETION, UNLESS SPECIFIC ITEMS ARE NOTED TO CARRY A LONGER WARRANTY IN THE CONSTRUCTION DOCUMENTS OR MANUFACTURER'S STANDARD WARRANTY EXCEEDS 12 MONTHS. REMEDY ALL DEFECTS, OCCURRING WITHIN THE WARRANTY PERIOD(S) STATED IN THE GENERAL CONDITIONS AND DIVISION 1.

WARRANTIES SHALL INCLUDE LABOR AND MATERIAL, MAKE REPAIRS OR REPLACEMENTS WITHOUT ANY ADDITIONAL COST TO THE OWNER.

PERFORM THE REMEDIAL WORK PROMPTLY, UPON WRITTEN NOTICE FROM THE ENGINEER OR OWNER.

AT THE TIME OF SUBSTANTIAL COMPLETION, DELIVER TO THE OWNER ALL WARRANTIES, IN WRITING AND PROPERLY EXECUTED, INCLUDING TERM LIMITS FOR WARRANTIES EXTENDING BEYOND THE ONE YEAR PERIOD, EACH WARRANTY INSTRUMENT BEING ADDRESSED TO THE OWNER AND STATING THE COMMENCEMENT DATE AND TERM.

**15A 1-9 CUTTING AND PATCHING**

PERFORM CUTTING OF WALLS, FLOORS, CEILINGS, ETC. AS REQUIRED TO INSTALL WORK UNDER THIS SECTION. OBTAIN PERMISSION FROM THE ARCHITECT PRIOR TO CUTTING. DO NOT CUT OR DISTURB STRUCTURAL MEMBERS WITHOUT PRIOR APPROVAL FROM THE ARCHITECT. CUT HOLES AS SMALL AS POSSIBLE. GENERAL CONTRACTOR SHALL PATCH WALLS, FLOORS, ETC. AS REQUIRED BY WORK UNDER THIS SECTION. PATCHING SHALL MATCH THE ORIGINAL MATERIAL AND CONSTRUCTION. REPAIR AND REFINISH AREAS DISTURBED BY WORK TO THE CONDITION OF ADJOINING SURFACES IN A MANNER SATISFACTORY TO THE ARCHITECT.

**15A 1-10 ROUGH-IN**

COORDINATE WITHOUT DELAY ROUGHING-IN WITH GENERAL CONSTRUCTION. CONCEAL PIPING AND CONDUIT ROUGH-IN EXCEPT IN UNFINISHED AREAS AND WHERE OTHERWISE SHOWN.

**15A 1-11 STRUCTURAL STEEL**

STRUCTURAL STEEL USED FOR PIPE SUPPORTS, EQUIPMENT SUPPORTS, ETC., SHALL BE NEW, CLEAN, AND CONFORM TO ASTM DESIGNATION A-36.

SUPPORT PLUMBING AND MECHANICAL EQUIPMENT AND PIPING FROM THE BUILDING STRUCTURE. DO NOT SUPPORT PLUMBING EQUIPMENT FORM CEILINGS, OTHER MECHANICAL OR ELECTRICAL COMPONENTS, AND OTHER NON-STRUCTURAL ELEMENTS.

**15A 1-12 ACCESS DOORS**

PROVIDE ACCESS DOORS IN CEILING AND WALLS WHERE INDICATED OR REQUIRED FOR ACCESS TO CONCEALED VALVES AND EQUIPMENT INSTALLED UNDER THIS SECTION. PROVIDE CONCEALED HINGES, SCREWDRIWER-TYPE LOCK, ANCHOR STRAPS MANUFACTURED BY MILCOR, ZURN, TITUS, OR EQUAL. OBTAIN ARCHITECTS APPROVAL OF TYPE, SIZE, LOCATION, AND COLOR BEFORE ORDERING.

**15A 1-13 PENETRATIONS**

SEAL FLOOR, EXTERIOR WALL, AND ROOF PENETRATIONS WATER AND WEATHERTIGHT WITH APPROPRIATE NON-SHRINK, NON-HARDENING COMMERCIAL CONSTRUCTION SEALANT. SEAL ROOF PENETRATIONS WITH 4 POUND PER SQUARE FOOT LEAD FLASHING. PROVIDE A SLEEVE, AND SEAL NON-FIRE-RATED FLOOR AND WALL PENETRATIONS WITH FIBERGLASS PACKING AND SILICONE CAULK (FOR ACOUSTICAL INSULATION).

COORDINATE FIRE RATING REQUIREMENTS AND LOCATIONS WITH THE ARCHITECT. SEAL PENETRATIONS OF FIRE-RATED ASSEMBLIES WITH 3M CP-25 FIRE BARRIER CAULK (PROVIDE THICKNESS AND METHOD AS REQUIRED AND RECOMMENDED BY MANUFACTURER) TO MAINTAIN THE FIRE RESISTANCE RATING OF FIRE-RATED ASSEMBLIES.

SEAL EXTERIOR WALL PENETRATIONS BELOW GRADE WITH CAST IRON WALL PIPES AND MODULAR MECHANICAL SLEEVE SEALS, MANUFACTURED BY THUNDERLINE/LINK SEAL, CALPICO, INC AND METRAFLEX.

PROVIDE SLEEVES FOR HORIZONTAL PIPE PASSING THROUGH OR UNDER FOUNDATION. SLEEVES SHALL BE CAST IRON SOIL PIPE TWO NOMINAL PIPE SIZES LARGER THAN THE PIPE SERVED.

PROVIDE SLEEVES FOR VERTICAL PIPE PASSING THROUGH SLAB ON GRADE. SLEEVES SHALL BE SCHEDULE 40 PVC PIPE, TWO NOMINAL PIPE SIZES LARGER THAN THE PIPE SERVED. SEAL WATER-TIGHT WITH SILICONE CAULK.

**15B: HEATING, VENTILATION, AND AIR CONDITIONING.**

**15B 1-1 DUCTWORK**

ALL DUCTWORK SHALL BE CONSTRUCTED IN ACCORDANCE WITH ASHRAE AND SMACNA STANDARDS CORRESPONDING TO THE SYSTEM PRESSURE. DUCTWORK SHALL BE CONSTRUCTED IN ACCORDANCE WITH THE STANDARDS FOR A TWO-INCH PRESSURE RATING AND SEAL CLASS B.

SUPPLY AND RETURN DUCTWORK INSIDE THE BUILDING SHALL BE INSULATED WITH 1" THICK ACOUSTICAL LINING WITH A MINIMUM R-VALUE OF 4.5 OR EXTERNALLY WRAPPED WITH 2" THICK GLASS FIBER DUCT WRAP. INSULATE SUPPLY AND RETURN DUCTWORK LOCATED OUTSIDE THE BUILDING WITH 2" LINER AND SEAL SEAMS WEATHER TIGHT. DEDICATED OUTSIDE AIR SUPPLY DUCTWORK LOCATED WITHIN THE BUILDING SHALL BE INSULATED WITH 2" DUCT WRAP.

FLEXIBLE DUCTWORK MAINS ARE NOT PERMITTED. PROVIDE MAXIMUM 5'-0" FLEXIBLE DUCT CONNECTIONS TO CEILING DIFFUSERS.

FURNISH AND INSTALL VOLUME/BALANCE DAMPERS AT ALL BRANCH DUCTS TO DIFFUSERS. LOCATE DAMPERS A MINIMUM OF 4'-0" AWAY FROM DIFFUSERS.

INSTALL VTR'S EXHAUST FANS, AND FLUES A MINIMUM OF 5'-0" FROM PARAPET OR OUTSIDE WALL AND 10'-0" MINIMUM FROM EQUIPMENT WITH OUTSIDE AIR INTAKE.

**15B 1-2 ELECTRICAL WIRING**

LINE VOLTAGE WIRING SHALL BE FURNISHED BY DIVISION 16. LINE VOLTAGE CONTROL AND INTERLOCK WIRING FOR MECHANICAL SYSTEMS SHALL ALSO BE FURNISHED BY DIVISION 16 CONTRACTOR. LOW VOLTAGE CONTROL WIRING SHALL BE BY THE DIVISION 15 CONTRACTOR. PROVIDE WIRING DIAGRAMS TO THE DIVISION 16 CONTRACTOR AS REQUIRED FOR PROPER EQUIPMENT HOOKUP. COORDINATE WITH THE DIVISION 16 CONTRACTOR THE ACTUAL WIRE SIZING AMPS FOR MECHANICAL EQUIPMENT (FROM THE EQUIPMENT NAMEPLATE) TO ENSURE PROPER INSTALLATION.

ALL TEMPERATURE SENSORS, FAN SWITCHES, AND SPEED CONTROLS SHALL BE INSTALLED 48" ABOVE THE FLOOR FOR ADA REQUIREMENTS.

**15B 1-3 FINAL TESTING AND ADJUSTMENTS**

AIR BALANCE SHALL BE PERFORMED BY AN INDEPENDENT AIR BALANCE CONTRACTOR. BALANCE EACH SUPPLY, RETURN, AND OUTSIDE AIR DEVICE WITHIN 5% OF REQUIREMENTS AND FURNISH A REPORT TO THE CONSTRUCTION MANAGER. THE ENTIRE HVAC SYSTEM MUST BE FULLY OPERABLE, BALANCED, AND APPROVED BY OWNER'S REPRESENTATIVE ON THE DAY TENANT OPENS FOR BUSINESS.

ADJUST THERMOSTATS AND CONTROL DEVICES TO OPERATE AS INTENDED. ADJUST BURNERS, PUMPS, FANS, ETC. FOR PROPER AND EFFICIENT OPERATION. CERTIFY TO ARCHITECT THAT ADJUSTMENTS HAVE BEEN MADE AND THAT SYSTEM IS OPERATING SATISFACTORILY. CALIBRATE, SET AND ADJUST AUTOMATIC TEMPERATURE CONTROLS. CHECK PROPER SEQUENCING OF INTERLOCK SYSTEMS, AND OPERATION OF SAFETY CONTROLS.

**15C: PLUMBING**

**15C 1-1 PIPING MATERIALS**

MATERIALS SPECIFIED OR NOTED ON THE DRAWINGS ARE SUBJECT TO THE APPROVAL OF LOCAL CODE AUTHORITIES. VERIFY APPROVAL BEFORE INSTALLING ANY MATERIAL OR JOINING METHOD.

DOMESTIC WATER (COLD, HOT, SOFT): DOMESTIC WATER PIPING INSTALLED ABOVE THE FLOOR SLAB INSIDE THE BUILDING SHALL BE TYPE "L" HARD TEMPER COPPER TUBE WITH WROUGHT COPPER.

FITTINGS AND SOLDERED CONNECTIONS MADE UP WITH 95/5 SOLDER. BRAZED MECHANICALLY FORMED TEE CONNECTIONS (T-DRILL) MAY BE USED IN COPPER LINES WHERE APPROVED BY CODE CONNECTION SHALL BE MADE WITH BRAZED SILVER SOLDER (SILFOS) JOINTS IN CONFORMANCE WITH MANUFACTURER'S INSTRUCTIONS.

UNDERGROUND DOMESTIC WATER PIPING SHALL BE TYPE "K" SOFT TEMPER COPPER TUBING WITH FLARED COPPER ALLOY FITTINGS AND CONNECTIONS, OR TYPE "K" HARD TEMPER COPPER TUBING WITH CONVENTIONAL WROUGHT COPPER FITTINGS AND SILVER SOLDER (SILFOS) JOINTS. INSTALL AS FEW UNDERGROUND COPPER PIPING JOINTS AS POSSIBLE. AT BUILDING SERVICE ENTRANCE, NO JOINTS SHALL BE INSTALLED UNDER OR WITHIN 5 FEET OF THE BUILDING. INSTALL DOMESTIC WATER PIPING BELOW GRADE OUTSIDE BUILDING AT ADEQUATE DEPTH TO PREVENT FREEZING.

INTERIOR WASTE AND VENT BELOW SLAB: WASTE AND AVERT PIPE BELOW SLAB INSIDE BUILDING SHALL BE STANDARD WEIGHT CAST IRON SOIL PIPE WITH HUB AND SPIGOT FITTINGS WITH NEOPRENE GASKET JOINTS. HUBLESS WASTE AND VENT PIPE IS NOT PERMITTED BELOW BASE SLAB. PVC DWV PIPE WITH SOCKET FITTINGS AND SOLVET WELD JOINTS IS ALSO PERMITTED WHERE APPROVED BY CODE.

INTERIOR WASTE AND VENT ABOVE SLAB: WASTE AND VENT PIPE ABOVE SLAB INSIDE BUILDING SHALL BE HUBLESS CAST IRON SOIL PIPE AND FITTINGS WITH HUBLESS COUPLINGS. PVC DWV PIPE WITH SOCKET FITTINGS AND SOLVENT WLD JOINTS IS ALSO PERMITTED WHERE APPROVED BY CODE AND LOCAL AUTHORITY HAVING JURSDICTION.

INDIRECT AND CONDENSATE DRAIN INSIDE BUILDING: INDIRECT AND CONDENSATE DRAIN PIPE INSTALLED INSIDE THE BUILDING SHALL BE TYPE "M" HARD COPPER WITH WROUGHT COPPER FITTINGS FOR 1" AND SMALLER AND "DWV" COPPER WITH WROUGHT COPPER DRAINAGE PATTERN FITTINGS FOR 1-1/4" AND LARGER HARD TEMPER COPPER TUBE AND SOLDERED CONNECTIONS MADE WITH 95/5 SOLDER. INSTALL CLEANOUTS AT ELBOWS GREATER THAN 45 DEGREES.

GAS PIPING: SCHEDULE 40 BLACK CARBON STEEL WITH MALLEABLE IRON THREADED FITTINGS. PAINT ALL GAS PIPING EXPOSED TO WEATHER WITH ONE COAT OF PRIMER, AND TWO COATS OF RUST-PROOF PAINT. COLOR SHALL MATCH BUILDING COLORS. COORDINATE WITH GENERAL CONTRACTOR.

**15C 1-2 PIPING AND EQUIPMENT INSULATION**

DOMESTIC COLD WATER, HOT WATER, INDIRECT AND CONDENSATE DRAIN PIPE (WITHIN BUILDINGS): 1" ONE-PIECE FIBERGLASS COVERING WITH FIRE-RESISTANT JACKET WITH SELF-SEALING LAP TO PROVIDE A CONTINUOUS VAPOR BARRIER BY CERTAINTED, OWENS-CORNING OR ARMSTRONG. FOR PIPING AT HANGERS PROVIDE 8" LONG SECTIONS OF HIGH DENSITY, HIGH TEMPERATURE CALCIUM SILICATE BY JOHNS-MANVILLE, FIBERGLASS BY KNAUF, OR 8" LONG STYROFOAM BILLETS BY DOW. INSULATION SHALL BE CONTINUOUS ALONG THE PIPE SURFACE, EXCEPT AT VALVES, UNIONS, AND WHERE PIPING IS EXPOSED AT FIXTURES.

FOR HOT AND COLD WATER PIPING INSTALLED INSIDE MASONRY UNITS OF WALLS, PROVIDE 1" FLEXIBLE UNICELLULAR INSULATION BY ARMACELL.

COVER FITTINGS WITH ZESTON, KNAUF, OR EQUAL ONE-PIECE PVC PREMOLDED INSULATING COVERS, FITTING COVERS, JACKETS AND ADHESIVES SHALL NOT EXCEED FLAME SPREAD RATING OF 25 AND SMOKE DEVELOPMENT RATING OF 50 PER ASTM E84. AT ALL ELBOWS AND TEES, FILL VOIDS BETWEEN COVERS AND PIPING WITH FIBERGLASS INSULATION AND TAPE JOINTS. INSTALL PIPE INSULATION IN COMPLIANCE WITH MANUFACTURER'S RECOMMENDATIONS, WHERE PREMOLDED INSULATING FITTINGS ARE NOT APPROVED BY LOCAL AUTHORITIES, MITER INSULATION AT FITTINGS.

**15C 1-3 PIPING INSTALLATION**

GENERAL: CLEAN PIPE THOROUGHLY PRIOR TO INSTALLATION. REAM ENDS OF PIPE TO REMOVE BURRS. CUT PIPE ACCURATELY TO MEASUREMENTS TAKEN ON THE JOB. INSTALL WITH ADEQUATE CLEARANCE FOR INSTALLATION OF COVERINGS WHERE REQUIRED. PIPE SHALL NOT BE SPRUNG OR BENT. NEATLY ALIGN PIPE, CONNECT IT SECURELY, AND SUPPORT IT FROM THE BUILDING STRUCTURE WITH HANGERS AS SPECIFIED BELOW. PROVIDE CHROME-PLATED ESCUTCHEONS ON PIPES PASSING THROUGH CEILINGS, FLOORS OR WALLS OF FINISHED SPACES. RUN PIPES FREELY THROUGH FLOOR AND WALL PENETRATIONS USING PIPE SLEEVES. DO NOT GROUT IN PLACE UNLESS REQUIRED FOR STRUCTURAL PIPE INTEGRITY. INSTALL PIPE CONCEALED IN FINISHES SPACES WHEREVER POSSIBLE. USE A DIELECTRIC UNION WHERE FERROUS AND COPPER PIPE CONNECT. DIELECTRIC UNION SHALL HAVE A ZINC-PLATED STEEL BODY, A THREADED NYLON INSERT, AND INSULATING PRESSURE GASKET. NO FERROUS METAL-TO-COPPER CONNECTION MADE WITHOUT INSULATING UNIONS WILL BE ALLOWED.

HANGER SUPPORTS: PIPE HANGERS SHALL BE AS DESCRIBED IN THE SPECIFICATIONS BY B-LINE OR EQUAL BY ANVIL, MICHIGAN, TRUSCON, OR UNISTRUT. CONNECT HANGERS TO THE STRUCTURE WITH SIDE BEAM CONNECTORS AND ALL THREAD HANGER ROD, PROVIDE ENGINEERED SUPPORT STRUTS BETWEEN JOISTS AND OTHER STRUCTURAL MEMBERS AS REQUIRED TO PROVIDE A RIGID HANGING INSTALLATION. DO NOT HANG PIPES FROM OTHER PIPES, CONDUIT OR DUCTWORK. PROVIDE HANGER RODS AND SPACE HANGERS AT INTERVALS AS REQUIRED.

SOIL, WASTE AND STORM: GRADE SOIL AND WASTE PIPING TO A UNIFORM SLOPE OF NOT LESS THAN 1/8" PER FOOT FOR PIPING 4" OR LARGER, AND NOT LESS THAN 1/4" PER FOOT FOR PIPING 3" OR SMALLER. SLOPE STORM PIPING AT 1/8" PER FOOT. LAY PIPE AT UNIFORM SLOPE, FREE FROM SAGS, WITH HUB END UPSTREAM. SUPPORT PIPE AT EACH JOINT. MAKE CHANGES IN DIRECTION FROM HORIZONTAL TO VERTICAL, AT FIXTURE BRANCHES AND OTHER BRANCH CONNECTION WITH SANITARY "TEES" OR SHORT SWEEP "ELLS". MAKE CHANGES IN DIRECTION FROM VERTICAL TO HORIZONTAL OR IN THE HORIZONTAL WITH LONG RADIUS FITTINGS, LONG SWEEPING "ELLS", COMBINATION "Y" FITTINGS, OR 45 DEGREE "ELLS" (1/8 BEND FITTINGS) AND "Y" FITTINGS.

DOMESTIC WATER: ARRANGE COLD, HOT AND HOT WATER RECIRCULATION PIPING TO DRAIN AT THE LOWEST POINT IN EACH SYSTEM. INSTALL AT LEAST ONE PIPE UNION ADJACENT TO ALL SHUTOFF VALVES. AT CONNECTION POINT OF EACH PIECE OF EQUIPMENT, AND ELSEWHERE IN THE SYSTEM WHERE REQUIRED TO ALLOW PROPER MAINTENANCE, PROVIDE UNIONS OF THE GROUND JOINT TYPE. MAKE ALLOWANCE FOR EXPANSION AND CONTRACTION WHERE REQUIRED BY THE INSTALLATION, WHERE WATER PIPING OCCURS IN EXTERIOR WALLS, HOLD PIPE AS CLOSE AS POSSIBLE TO THE INTERIOR FACE OF WALL AND INSTALL INSULATION BATT OR OTHER INSULATION (MINIMUM R8) BETWEEN PIPING AND THE EXTERIOR WALL FACE.

**15C 1-4 SYSTEM TESTING AND ADJUSTING**

UPON COMPLETION OF EACH PHASE OF THE INSTALLATION, TEST EACH SYSTEM IN CONFORMANCE WITH LOCAL CODE REQUIREMENTS AND LANDLORD CRITERIA. FURNISH LABOR AND EQUIPMENT REQUIRED TO TEST PLUMBING WORK INSTALLED UNDER THIS CONTRACT, AND ASSUME COST INVOLVED IN MAKING THE TESTS, AND REPAIRING AND/OR REPLACING DAMAGE RESULTING THERE FROM.

NOTIFY THE ARCHITECT AND THE AUTHORITY HAVING JURISDICTION, THREE (3) WORKING DAYS PRIOR TO MAKING PLUMBING SYSTEM TEST. LEAVE CONCEALED WORK UNCOVERED UNTIL THE REQUIRED TEST HAVE BEEN COMPLETED, BUT IF NECESSARY DUE TO CONSTRUCTION PROCEDURE, TEST ON PORTIONS OF THE WORK MAY BE MADE, AND WHEN SATISFACTORY, THE WORK MAY BE CONCEALED. TEST PIPING BEFORE INSULATION IS INSTALLED, AND BEFORE BACKFILL PIPES, JOINTS, FLANGES, VALVE STEMS, ETC. SHALL BE LEAK TIGHT. REPAIR OR REPLACE SYSTEM DEFECTS WITH NEW MATERIALS. CAULKING OF DEFECTIVE JOINTS, CRACKS OR HOLES WILL NOT BE PERMITTED. REPEAT EST AFTER DEFECTS HAVE BEEN ELIMINATED. MAKE TESTS IN THE PRESENCE OF THE ADMINISTRATIVE AUTHORITY AND/OR THE OWNER'S AUTHORIZED REPRESENTATIVE.

**15C 1-5 GUARANTEE**

THE WORK TO BE PERFORMED UNDER THIS CONTRACT SHALL INCLUDE THE FURNISHING, INSTALLATION, AND CONNECTION OF PLUMBING SYSTEMS INDICATED ON THE DRAWINGS AND IN THE SPECIFICATIONS, BY SIGNING THE CONTRACT, THE CONTRACTOR ACKNOWLEDGES THAT HE HAS ACQUAINTED HIMSELF WITH THE SITE AND THE EXISTING CONDITIONS UNDER WHICH THE WORK IS TO BE PERFORMED, AND THE DRAWINGS AND SPECIFICATIONS PERTAINING THERETO, AND HE INDICATES THAT HE WILL COMPLY WITH THE REQUIREMENTS AND IN FORCE OF PERTINENT DOCUMENTS IN THE PERFORMANCE OF THE WORK.

GUARANTEE THAT THE PLUMBING INSTALLED UNDER THIS CONTRACT IS FREE OF DEFECTS IN WORKMANSHIP AND MATERIALS FOR A PERIOD OF ONE (1) YEAR FROM THE DATE OF JOB ACCEPTANCE BY THE OWNER. THIS SHALL INCLUDE A GUARANTEE OF FREE CIRCULATION OF LIQUIDS THROUGHOUT THE SYSTEM AS INTENDED WITHOUT LEAKS, EXCESSIVE NOISE, OR WATER HAMMER.

IF DEFECTS OCCUR DURING THE ONE YEAR GUARANTEE PERIOD, REPAIR OR REPLACE SUCH DEFECTS AT NO EXPENSE TO THE OWNER, AND TO THE SATISFACTION OF THE OWNER, ARCHITECT AND ENGINEER.

<b>PROJECT:</b>	
COMMERCIAL DISPENSERY FIT-OUT	
TRULIEVE: ATTN. ROBERT JOYCE	
3528 COLUMBIA PARKWAY	
CINCINNATI, OH 45226	

<b>PROJECT NUMBER:</b>	24191
------------------------	-------



**CORE STATES GROUP**

213 SE 34TH STREET  
SUITE 2  
BENTONVILLE, AR 72712  
479.864.4400  
WWW.CORE-STATES.COM

**STAMP:**



DESCRIPTION	DATE
Revision 1	01/30/25

**DRAWING SCALE:** AS NOTED

**DRAWN BY:** JLK **CHECKED BY:** ZEA

**DRAWING TITLE:** MECH AND PLUMB SPECIFICATIONS

**DRAWING NUMBER:** M7.0