

SECTION 23 05 93 - TESTING, ADJUSTING AND BALANCING FOR HVAC

- PART 1 - GENERAL
1. QUALITY ASSURANCE: ALL TESTING AND BALANCING WORK SHALL BE COMPLETED BY AN INDEPENDENT CONTRACTOR...
PART 2 - PRODUCTS: N/A
PART 3 - EXECUTION
1. AIR SYSTEMS
A. PROVIDE ALL LABOR AND MATERIALS REQUIRED TO BALANCE THE SYSTEM AS NOTED ON THE PLANS...

(END OF SECTION 23 05 93)

SECTION 23 07 13 - DUCT INSULATION

- PART 1 - GENERAL
1. INSULATION SHALL BE PROVIDED ON THE FOLLOWING DUCT SERVICES:
A. INDOOR, CONCEALED SUPPLY AND OUTDOOR AIR
B. INDOOR, CONCEALED RETURN
C. INDOOR, CONCEALED OVEN AND WAREWASH EXHAUST FROM AIR TERMINAL TO PENETRATION OF BUILDING EXTERIOR...
PART 2 - PRODUCTS
1. INTERIOR DUCTWORK SHALL HAVE FLEXIBLE FIBERGLASS DUCT WRAP LAMINATED TO FOIL REINFORCED KRAFT VAPOR BARRIER FACING WITH 2" STAPLING FLANGE AND AN INSTALLED THICKNESS OF 1-1/2" WITH AN R-VALUE OF 6.0...

(END OF SECTION 23 07 13)

SECTION 23 31 13 - METAL DUCTS

- PART 1 - GENERAL
1. SECTION INCLUDES
A. RECTANGULAR DUCTS AND FITTINGS
B. ROUND DUCTS AND FITTINGS
C. DOUBLE WALL DUCTWORK AND FITTINGS
D. SHEET METAL MATERIALS
E. SEALANTS AND GASKETS
F. HANGERS AND SUPPORTS
2. PERFORMANCE REQUIREMENTS
A. DUCT CONSTRUCTION, INCLUDING SHEET METAL THICKNESS, SEAM AND JOINT CONSTRUCTION, REINFORCEMENTS AND HANGERS/SUPPORTS SHALL COMPLY WITH THE LATEST VERSION OF SMACNA'S 'HVAC DUCT CONSTRUCTION STANDARDS - METAL AND FLEXIBLE'...

(END OF SECTION 23 31 13)

SECTION 23 33 00 - AIR DUCT ACCESSORIES

- PART 1 - GENERAL
1. SECTION INCLUDES
A. BACKDRAFT AND PRESSURE RELIEF DAMPERS
B. MANUAL VOLUME DAMPERS
C. CONTROL DAMPERS
D. FIRE DAMPERS
E. TURNING VANES
F. FLEXIBLE CONNECTORS
G. DUCT ACCESSORY HARDWARE
2. SECTION REQUIREMENTS
A. SUBMITTALS: NONE REQUIRED.
PART 2 - PRODUCTS
1. COMPLY WITH NFPA 90A AND WITH NFPA 90B
2. COMPLY WITH SMACNA'S 'HVAC DUCT CONSTRUCTION STANDARDS-METAL AND FLEXIBLE' FOR ACCEPTABLE MATERIALS, THICKNESS AND DUCT CONSTRUCTION METHODS UNLESS NOTED OTHERWISE...

(END OF SECTION 23 33 00)

SECTION 23 33 46 - FLEXIBLE DUCTS

- PART 1 - GENERAL
1. SECTION REQUIREMENTS
A. SUBMITTALS: NONE REQUIRED.
PART 2 - PRODUCTS
1. COMPLY WITH NFPA 90A AND NFPA 90B
2. COMPLY WITH SMACNA'S 'HVAC DUCT CONSTRUCTION STANDARDS - METAL AND FLEXIBLE' FOR ACCEPTABLE MATERIALS, MATERIAL THICKNESS AND DUCT CONSTRUCTION METHODS UNLESS NOTED OTHERWISE...
PART 3 - EXECUTION
1. INSTALLATION
A. INSTALL FLEXIBLE DUCTS ACCORDING TO APPLICABLE DETAILS IN SMACNA'S 'HVAC DUCT CONSTRUCTION STANDARDS - METAL AND FLEXIBLE'...

(END OF SECTION 23 33 46)

SECTION 23 37 13 - GRILLES, REGISTERS & DIFFUSERS

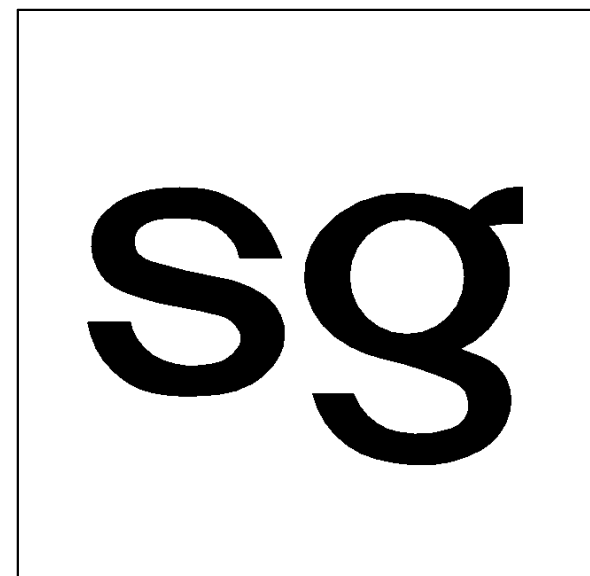
- PART 1 - GENERAL
1. SECTION REQUIREMENTS
A. SUBMITTALS: NONE REQUIRED.
PART 2 - PRODUCTS
1. GRILLES: MANUFACTURER, MODEL, MATERIAL, FINISH, MOUNTING AND ACCESSORIES SHALL BE AS NOTED IN THE MECHANICAL SCHEDULES...
PART 3 - EXECUTION
1. INSTALLATION
A. INSTALL GRILLES, REGISTERS & DIFFUSERS LEVEL AND PLUMB
B. INSTALL GRILLES, REGISTERS & DIFFUSERS AS INDICATED, REFER TO ARCHITECTURAL REFLECTED CEILING PLAN AND ELEVATIONS FOR EXACT LOCATION...

(END OF SECTION 23 37 13)

SECTION 23 74 16 - PACKAGED ROOFTOP AIR-CONDITIONING UNITS

- PART 1 - GENERAL
1. SECTION REQUIREMENTS
A. SUBMITTALS: PROVIDE SHOP DRAWINGS INDICATING THE DIMENSIONS, WEIGHTS, REQUIRED CLEARANCES, COMPONENTS, EFFICIENCIES, CAPACITIES, ELECTRICAL CHARACTERISTICS AND LOCATION AND SIZE OF EACH FIELD CONNECTION FOR EACH RTU...
PART 2 - PRODUCTS
1. DESCRIPTION
A. ASHRAE COMPLIANCE: COMPLY WITH ASHRAE 15 FOR REFRIGERATION SAFETY
B. ENERGY COMPLIANCE: COMPLY WITH THE APPLICABLE REQUIREMENTS OF THE ENERGY CODE LISTED ON THE COVER SHEET...
PART 3 - EXECUTION
1. INSTALLATION
A. ROOF CURB: INSTALL ON ROOF STRUCTURE, LEVEL, SECURE, PER STRUCTURAL DETAILS AND PER THE MANUFACTURER'S INSTALLATION INSTRUCTIONS...

(END OF SECTION 23 74 16)



sweetgreen
3101 W. EXPOSITION BLVD.
LOS ANGELES, CALIFORNIA 90018

THESE DRAWINGS & SPECIFICATIONS ARE CONFIDENTIAL AND SHALL REMAIN THE SOLE PROPERTY OF SWEETGREEN CORPORATION. THEY SHALL NOT BE REPRODUCED IN WHOLE OR IN PART, SHARED WITH THIRD PARTIES OR USED IN ANY MANNER ON OTHER PROJECTS OR EXTENSIONS TO THIS PROJECT WITHOUT THE PRIOR WRITTEN CONSENT OF SWEETGREEN CORPORATION.

ENGINEER OF RECORD:
EVERJ ENGINEERING, INC.
1509 BUCK TRAIL LANE
WORTHINGTON, OH 43085
240-319-0822
www.everjengineering.com

STAMP:
CONSTRUCTION ISSUE SET 2-25-2022

11/18/2021

PROJECT INFORMATION:
86TH & KEYSTONE
PROJECT INFORMATION:
8702 KEYSTONE CROSSING
INDIANAPOLIS, IN 46240

Table with 2 columns: Field, Value. Includes DRAWN BY: JAE, CHECKED BY: JAE, PROJECT MANAGER: JAE, SG DESIGN MANAGER: LK, SG CONSTR. MANAGER: JB, PROJECT NO: 210026, TEMPLATE VERSION: 04/02/2021

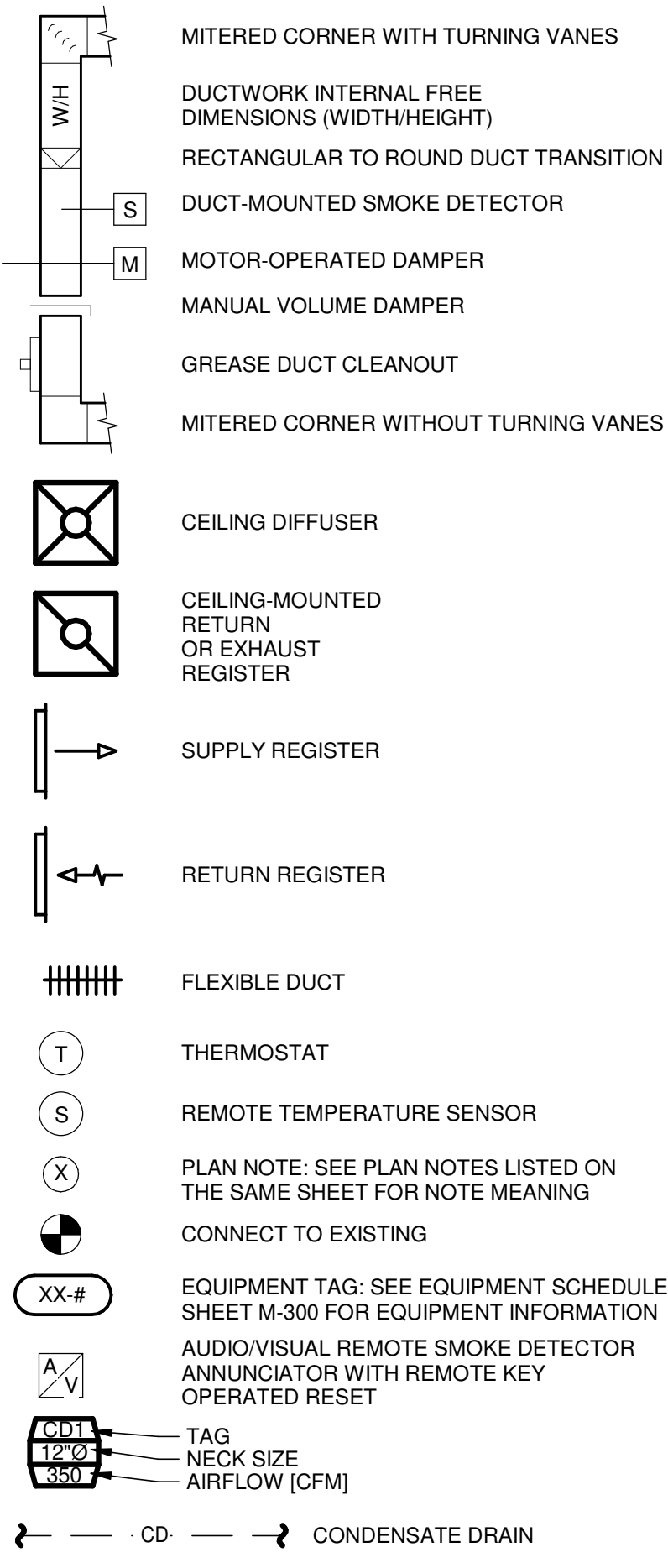
Table with 3 columns: REV., DATE, DESCRIPTION. Header row: REVISIONS, REV., DATE, DESCRIPTION

MECHANICAL SPECIFICATIONS

M-010

SYMBOLS & ABBREVIATIONS

HVAC SYMBOLS



HVAC ABBREVIATIONS

AFF	ABOVE FINISHED FLOOR
AFG	ABOVE FINISHED GRADE
AHU	AIR HANDLING UNIT
BC	BLOWER COIL
CD	CEILING DIFFUSER
CU	CONDENSING UNIT
EF	EXHAUST FAN
ER	EXHAUST REGISTER
EXT'G	EXISTING
GC	GENERAL CONTRACTOR
HES	TENANT'S HVAC EQUIPMENT SUPPLIER
KES	TENANT'S KITCHEN EQUIPMENT SUPPLIER
OB	BLADE DAMPER
PL	PLENUM
RG	RETURN GRILLE
RTU	ROOFTOP UNIT
SD	SLOT DIFFUSER
SR	SUPPLY REGISTER
VSC	VARIABLE SPEED CONTROL
WSHP	WATER SOURCE HEAT PUMP

GENERAL NOTES

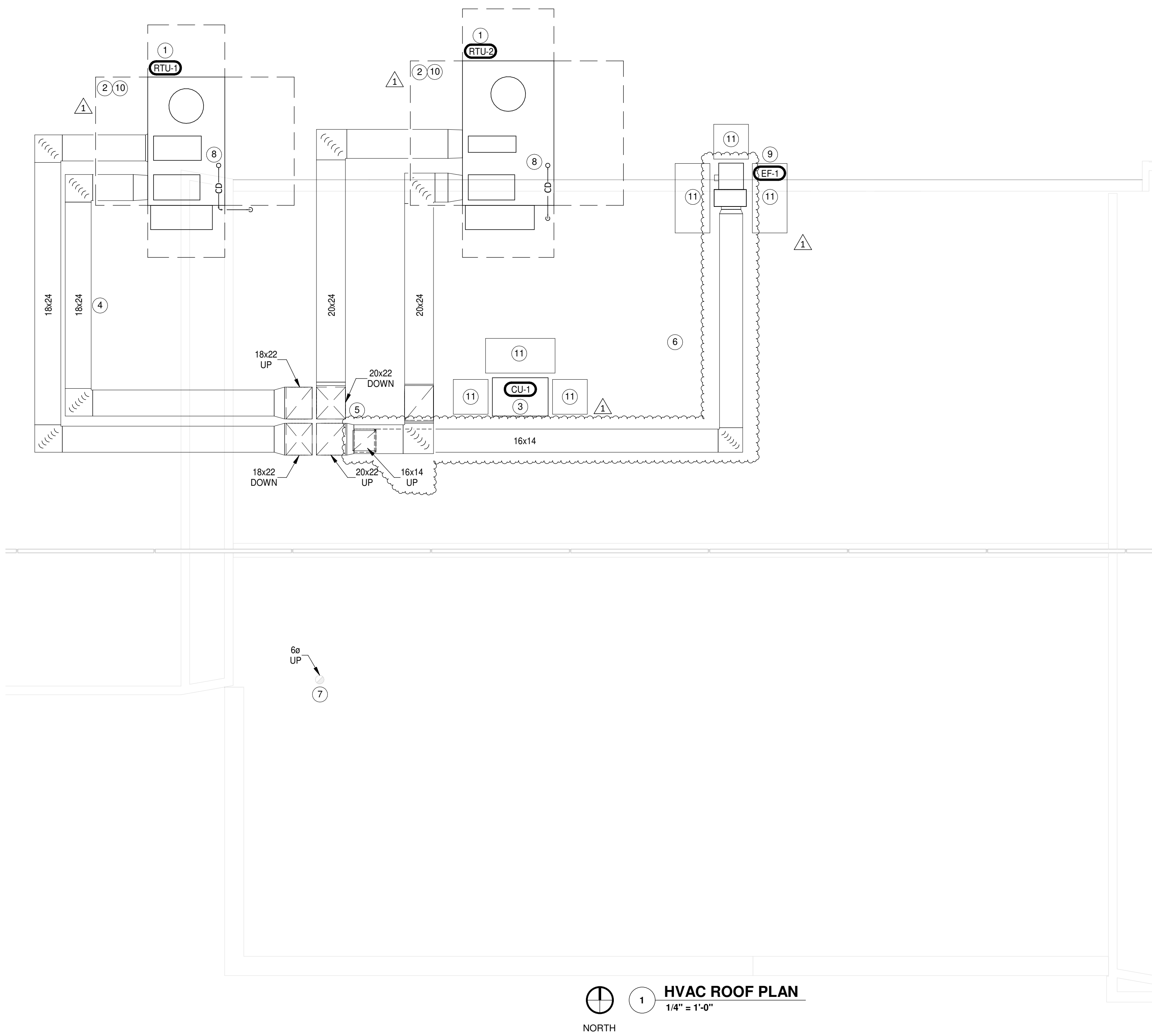
- A GENERAL NOTES APPLY TO ALL HVAC SHEETS.
- B WORK SHALL COMPLY WITH STATE AND LOCAL CODE REQUIREMENTS AS APPROVED AND AMENDED BY THE AUTHORITY HAVING JURISDICTION, INCLUDING APPLICABLE SECTIONS OF NFPA, THE MECHANICAL CODE, AND ANY INTERIM AMENDMENTS AT THE TIME OF THE PROPOSAL. PURCHASE PERMITS ASSOCIATED WITH THE WORK. OBTAIN INSPECTIONS REQUIRED BY CODE. SEE SHEET G-001 FOR THE PREVAILING CODES.
- C CONTRACTOR AND SUBCONTRACTORS SHALL REVIEW A COMPLETE SET OF THE CONSTRUCTION DOCUMENTS.
- D COORDINATE WORK WITH THE WORK OF OTHER TRADES, EQUIPMENT FURNISHED BY OTHERS, REQUIREMENTS OF THE OWNER, AND OF THE EXISTING CONDITIONS AT THE PROJECT SITE.
- E DRAWINGS FOR THE MECHANICAL WORK ARE DIAGRAMMATIC, SHOWING THE GENERAL LOCATION, TYPE, LAYOUT, AND EQUIPMENT REQUIRED. THE DRAWING SHALL NOT BE SCALED FOR EXACT MEASUREMENTS. REFER TO ARCHITECTURAL DRAWINGS FOR DIMENSIONS. REFER TO MANUFACTURER'S STANDARD INSTALLATION DRAWINGS FOR EQUIPMENT CONNECTIONS AND INSTALLATION REQUIREMENTS. PROVIDE DUCTWORK, CONNECTIONS, OFFSETS, ACCESSORIES, AND MATERIALS NECESSARY FOR A COMPLETE SYSTEM.
- F DUCT DIMENSIONS ON PLANS INDICATE DIMENSIONS OF INTERNAL FREE AREA.
- G PERFORATED CEILING DIFFUSERS SHALL BE 4-WAY UNLESS NOTED OTHERWISE.
- H COORDINATE ROOF WORK WITH THE LANDLORD AND SWEETGREEN'S CONSTRUCTION MANAGER PRIOR TO CONSTRUCTION. UTILIZE THE LANDLORD'S ROOFING CONTRACTOR AT THE GENERAL CONTRACTOR'S EXPENSE WHEN REQUIRED.
- I UNLESS NOTED OTHERWISE RECTANGULAR DUCT ELBOWS SHALL BE MITERED ELBOWS WITH DOUBLE-THICKNESS TURNING VANES.
- J REPLACE AIR FILTERS WITH NEW, CLEAN MERV8 FILTERS AT TURNOVER.
- K THE TERM "FURNISH" OR "SUPPLY" MEANS SUPPLY AND DELIVER TO THE PROJECT SITE, READY FOR UNLOADING, UNPACKING, ASSEMBLY, INSTALLATION, AND SIMILAR OPERATIONS. THE TERM "INSTALL" DESCRIBES THE OPERATIONS AT THE PROJECT SITE INCLUDING THE ACTUAL UNLOADING, UNPACKING, ASSEMBLY, ERECTING, PLACING, ANCHORING, APPLYING, WORKING TO DIMENSION, FINISHING, CURING, PROTECTING, CLEANING, AND SIMILAR OPERATIONS. THE TERM "PROVIDE" MEANS TO FURNISH AND INSTALL COMPLETE AND READY FOR THE INTENDED USE.
- L A FINAL REPORT FOR THE TESTING AND ADJUSTMENTS OF ALL NEW SYSTEMS FROM ALL DISCIPLINES SHALL BE COMPLETED WITH FINAL APPROVAL BY THE FIELD INSPECTOR. THIS REPORT SHALL BE SIGNED BY THE INDIVIDUAL RESPONSIBLE FOR PERFORMING THESE SERVICES.
- M TESTING AND BALANCING OF THE MECHANICAL SYSTEMS TO BE COMPLETED BY NATIONAL/TAB AT THE GENERAL CONTRACTOR'S EXPENSE. THE CONTRACTOR SHALL CONTRACT WITH, SCHEDULE AND SUPERVISE/ASSIST NATIONAL/TAB AS REQUIRED. REFER TO THE COVER SHEET, OR CONTACT SWEETGREEN'S CONSTRUCTION MANAGER FOR CONTACT INFORMATION.

LANDLORD NOTES

- ROOF EQUIPMENT, INCLUDING BUT NOT LIMITED TO HVAC EQUIPMENT, KITCHEN EQUIPMENT, DUCTS, AND PIPING SHALL BE SHOWN ON A ROOF PLAN TO BE INCLUDED IN TENANT'S DRAWINGS SUBMISSION. SHALL NOT BE VISIBLE FROM THE OUTER RING ROAD OR FROM MALL SKYLIGHTS, LOCATED WITHIN THE ROOF AREA OF THE PREMISES AND MINIMUM OF 5'-0" FROM THE VERTICAL PLANE OF ANY DEMISING PARTITION LOCATED, AND SHALL BE COORDINATE WITH THE MALL OPERATIONS TEAM PRIOR TO THE START OF ANY WORK. EQUIPMENT SCREENS OR SCREEN WALLS MAY BE REQUIRED AND SHALL BE APPROVED IN WRITING BY LANDLORD UNDER SEPARATE COVER.
- TENANT SHALL PROVIDE A STRUCTURAL ENGINEER EVALUATION OF THE EXISTING CONSTRUCTION / STRUCTURE AND DETERMINES THAT IT IS SUFFICIENT FOR THE ADDITIONAL LOADS OF ALL NEW ROOF TOP EQUIPMENT IN ACCORDANCE WITH THE BUILDING CODE THAT HAS BEEN ADOPTED BY THE AUTHORITIES HAVING JURISDICTION (AHJ) AT TENANT'S SOLE EXPENSE. STRUCTURAL DETAILS ARE TO INCLUDE REFERENCE OF APPLICABLE BUILDING CODE(S), EXISTING BUILDING LOADS, AND ADDITIONAL LOADS THAT WILL BE ADDED TO THE STRUCTURE AND ANY REINFORCING THAT IS REQUIRED. STRUCTURAL DETAILS ARE TO BE SIGNED, SEALED, AND SUBMIT TO THE LANDLORD FOR THEIR RECORDS BY A LICENSED STRUCTURAL ENGINEER WITH LEGALLY ACTIVE REGISTRATION IN THE STATE IN WHICH THE PROJECT IS LOCATED. LANDLORD RESERVE THE RIGHT TO HAVE A 3RD PARTY ENGINEER REVIEW TENANT'S DESIGN AND MAY REQUIRE TENANT TO PROVIDE DOCUMENTATION BY A 3RD PARTY INSPECTOR TO VERIFY THAT STRUCTURAL INSTALLATION HAS BEEN INSTALLED CORRECTLY.
- ROOF EQUIPMENT REQUIRING DECK PENETRATION SHALL BE SET ON A FACTORY SUPPLIED CURB AND MUST EXTEND A MINIMUM OF 12" ABOVE HIGHEST ROOF MATERIAL. RE-USE OF EXISTING CURBS OR THE USE OF CURB ADAPTERS IS STRICTLY PROHIBITED. THE GENERAL CONTRACTOR SHALL RE-SLOPE ROOF TO MAINTAIN PROPER DRAINAGE AND PROVIDE ROOFING, FLASHING, AND WATERPROOFING FOR INSTALLATION OF NEW CURB PER LANDLORD'S CRITERIA AT THE GENERAL CONTRACTOR'S EXPENSE.
- ALL CONDENSATION, ELECTRICAL, AND DUCTWORK SHALL BE SET INSIDE THE PERIMETER OF THE CURB. CONDENSATE SHALL DRAIN INTO AN INTERIOR FLOOR DRAIN OR MOP SINK WITHIN THE PREMISES. DAYLIGHTING CONDENSATE LINES DIRECTLY ONTO THE ROOF, DOWNSPOUT OR ROOF DRAIN IS STRICTLY PROHIBITED.
- THE GENERAL CONTRACTOR SHALL PROVIDE "ROOF TRAFFIC" / WALKWAY PADS AROUND ALL ROOF TOP EQUIPMENT AND SHALL INDICATE LOCATION OF PADS ON A ROOF PLAN TO BE INCLUDED IN TENANT'S DRAWINGS SUBMISSION. COORDINATE FINAL LOCATION, MATERIAL, AND INSTALLATION OF PADS WITH THE MALL OPERATIONS TEAM PRIOR TO THE START OF ANY WORK.
- THE GENERAL CONTRACTOR SHALL LABEL ALL ROOF TOP EQUIPMENT INDICATING: TENANT NAME, SPACE NUMBER, AND EQUIPMENT IDENTIFICATION PER THE LANDLORD'S DESIGN CRITERIA.
- EQUIPMENT THAT UTILIZES CONDENSER COILS SHALL BE EQUIPPED WITH HAIL GUARDS.
- LANDLORD STRONGLY PREFERS USE OF ENERGY STAR PRODUCTS AND/OR EQUIPMENT WHENEVER POSSIBLE DURING TENANT BUILD OUT, WHICH CAN REDUCE ENERGY CONSUMPTION.

CODED NOTES

- 1 INSTALL EQUIPMENT MOUNTED ON OWNER-FURNISHED CURB PER MANUFACTURER'S INSTALLATION INSTRUCTIONS.
- 2 MAINTAIN MANUFACTURER'S RECOMMENDED CLEARANCE ZONES. ROUTE DUCTWORK AND PIPING SERVING THIS EQUIPMENT SUCH THAT ACCESS ISN'T OBSTRUCTED TO THE UNITS.
- 3 COORDINATE MOUNTING LOCATION FOR WALK-IN COOLER CONDENSING UNIT, CU-1 ON THE ROOF WITH THE KITCHEN EQUIPMENT SUPPLIER PRIOR TO ROUGH-IN. ENSURE ALL CLEARANCE REQUIREMENTS FOR THE UNIT ARE MAINTAINED. KITCHEN EQUIPMENT SUPPLIER SHALL PROVIDE LINESSET, SPECIALTIES AND MAKE ALL FINAL CONNECTIONS BETWEEN THE CONDENSING UNIT AND EVAPORATOR COIL.
- 4 PROVIDE ROOF-MOUNTED DUCTWORK AS NOTED IN THE SPECIFICATIONS, SCHEDULES AND PER DETAIL 2/SHEET M-300, TYPICAL.
- 5 COORDINATE DUCTWORK PENETRATION WITH EXISTING CONDITIONS. UTILIZE EXISTING PENETRATION LOCATIONS WHEN PRACTICAL. MODIFY AND PROVIDE ADDITIONAL ROOF PENETRATIONS AS NECESSARY. ALL ROOFING WORK SHALL BE COMPLETED BY A LANDLORD-APPROVED CONTRACTOR AT THE GENERAL CONTRACTOR'S EXPENSE.
- 6 EXHAUST FAN DISCHARGE SHALL BE NO LESS THAN 10'-0" FROM ALL MECHANICAL FRESH AIR INTAKES.
- 7 EXISTING RESTROOM EXHAUST GOOSENECK TO BE REUSED. FIELD-VERIFY EXACT LOCATION.
- 8 PROVIDE INSULATED COPPER CONDENSATE DRAIN THROUGH THE BASE OF THE RTU CURB. INSTALL AND TRAP PER THE MANUFACTURER'S INSTALLATION INSTRUCTIONS. INSTALL SUCH THAT ALL CLEANOUTS ARE ACCESSIBLE ONCE BUILDING SYSTEMS HAVE BEEN INSTALLED. TERMINATE AT THE MOP SINK THROUGH AN AIR GAP PER DETAIL 5/SHEET P-400. COORDINATE ROUTING WITH THE LANDLORD'S REPRESENTATIVE PRIOR TO INSTALLATION. REFER TO SHEET M-100 FOR CONTINUATION.
- 9 INSTALL EQUIPMENT MOUNTED ON EQUIPMENT RAILS PER THE STRUCTURAL DETAILS.
- 10 THE GENERAL CONTRACTOR SHALL PROVIDE ROOF TRAFFIC / WALKWAY PADS AROUND THE PACKAGED ROOF TOP EQUIPMENT TO PROVIDE COVERAGE IN THE CLEARANCE ZONES NOTED. PADS SHALL BE FURNISHED AND INSTALLED BY THE LANDLORD'S ROOFING CONTRACTOR AT THE GENERAL CONTRACTOR'S EXPENSE. COORDINATE FINAL LOCATION, MATERIAL AND INSTALLATION OF PADS WITH THE MALL OPERATIONS TEAM PRIOR TO THE START OF ANY WORK.
- 11 THE GENERAL CONTRACTOR SHALL PROVIDE ROOF TRAFFIC / WALKWAY PADS AROUND THE WALK-IN COOLER CONDENSING UNIT AND EXHAUST FAN. PADS SHALL BE FURNISHED AND INSTALLED BY THE LANDLORD'S ROOFING CONTRACTOR AT THE GENERAL CONTRACTOR'S EXPENSE. COORDINATE FINAL LOCATION, MATERIAL AND INSTALLATION OF PADS WITH THE MALL OPERATIONS TEAM PRIOR TO THE START OF ANY WORK.



HVAC ROOF PLAN
 1/4" = 1'-0"
 NORTH



sweetgreen

3101 W. EXPOSITION BLVD.
 LOS ANGELES, CALIFORNIA 90018

THESE DRAWINGS & SPECIFICATIONS ARE CONFIDENTIAL AND SHALL REMAIN THE SOLE PROPERTY OF SWEETGREEN CORPORATION. THEY SHALL NOT BE REPRODUCED (IN WHOLE OR IN PART), SHARED WITH THIRD PARTIES OR USED IN ANY MANNER ON OTHER PROJECTS OR EXTENSIONS TO THIS PROJECT WITHOUT THE PRIOR WRITTEN CONSENT OF SWEETGREEN CORPORATION. THESE DRAWINGS & SPECIFICATIONS ARE INTENDED TO EXPRESS DESIGN INTENT FOR A PROTOTYPICAL SWEETGREEN STORE WHICH IS SUBJECT TO CHANGE AT ANY TIME AND MAY NOT REFLECT ACTUAL SITE CONDITIONS. NEITHER PARTY SHALL HAVE ANY OBLIGATION OR LIABILITY TO THE OTHER EXCEPT AS STATED ABOVE UNTIL A WRITTEN AGREEMENT IS FULLY EXECUTED.

ENGINEER OF RECORD:

EVERJ ENGINEERING, INC.
 1509 BUCK TRAIL LANE
 WORTHINGTON, OH 43085
 240-319-0822
 www.everjengineering.com

STAMP:

**CONSTRUCTION
 ISSUE SET
 2-25-2022**

PROJECT INFORMATION:
86TH & KEYSTONE

PROJECT INFORMATION:
**8702 KEYSTONE CROSSING
 INDIANAPOLIS, IN 46240**

DRAWN BY:	JAE
CHECKED BY:	JAE
PROJECT MANAGER:	JAE
SG DESIGN MANAGER:	LK
SG CONSTR. MANAGER:	JB
PROJECT NO:	210026
TEMPLATE VERSION:	04/02/2021

REV.	DATE	DESCRIPTION
1	01/12/2022	LL COMMENTS
2	02/10/2022	WH WALL & STR CONN

HVAC ROOF PLAN

M-101

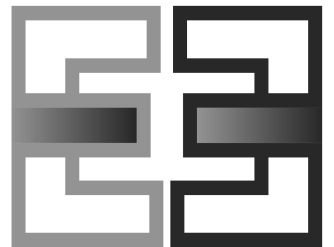


sweetgreen

3101 W. EXPOSITION BLVD. LOS ANGELES, CALIFORNIA 90018

THESE DRAWINGS & SPECIFICATIONS ARE CONFIDENTIAL AND SHALL REMAIN THE SOLE PROPERTY OF SWEETGREEN CORPORATION. THEY SHALL NOT BE REPRODUCED IN WHOLE OR IN PART, SHARED WITH THIRD PARTIES OR USED IN ANY MANNER ON OTHER PROJECTS OR EXTENSIONS TO THIS PROJECT WITHOUT THE PRIOR WRITTEN CONSENT OF SWEETGREEN CORPORATION. THESE DRAWINGS & SPECIFICATIONS ARE INTENDED TO EXPRESS DESIGN INTENT FOR A PROTOTYPICAL SWEETGREEN STORE WHICH IS SUBJECT TO CHANGE AT ANY TIME AND MAY NOT REFLECT ACTUAL SITE CONDITIONS. NEITHER PARTY SHALL HAVE ANY OBLIGATION OR LIABILITY TO THE OTHER EXCEPT AS STATED ABOVE UNTIL A WRITTEN AGREEMENT IS FULLY EXECUTED.

ENGINEER OF RECORD:



EVERJ ENGINEERING, INC. 1509 BUCK TRAIL LANE WORTHINGTON, OH 43085 240-319-0822 www.everjengineering.com

STAMP:

CONSTRUCTION ISSUE SET 2-25-2022

11/18/2021

PROJECT INFORMATION: 86TH & KEYSTONE

PROJECT INFORMATION: 8702 KEYSTONE CROSSING INDIANAPOLIS, IN 46240

DRAWN BY: JAE CHECKED BY: JAE PROJECT MANAGER: JAE SG DESIGN MANAGER: LK SG CONSTR. MANAGER: JB PROJECT NO: 210026 TEMPLATE VERSION: 04/02/2021

REVISIONS REV. DATE DESCRIPTION 1 01/12/2022 LL COMMENTS 2 02/10/2022 WH WALL & STR CONN

HVAC SCHEDULES

M-200

AIR BALANCE SCHEDULE

Table with columns: TAG, SUPPLY AIRFLOW (CFM), RETURN AIRFLOW (CFM), OUTSIDE AIRFLOW (CFM), EXHAUST AIRFLOW (CFM), SUBTOTAL (CFM). Rows include EF-1, EF-2, RTU-1, RTU-2, and Net Pressurization (CFM).

EXHAUST SCHEDULE

[PER 2014 INDIANA MECHANICAL CODE TABLE 403.3.1.1]

Table with columns: CATEGORY, AREA (SF), NUMBER OF FIXTURES, AIR RATE (CFM / SF), EXHAUST REQUIRED (CFM), FLOOR AREA, VENTILATION REQUIRED (CFM), VENTILATION PROVIDED (CFM). Rows include KITCHEN, RESTROOMS, and TOTAL.

VENTILATION SCHEDULE

[PER 2014 INDIANA MECHANICAL CODE TABLE 403.3.1.1]

Table with columns: CATEGORY, OCCUPANT DENSITY (# / 1000 SF), AREA (SF), OCCUPANCY BY AREA (PEOPLE), AIR RATE (CFM), VENTILATION REQUIRED (CFM), FLOOR AREA, VENTILATION PROVIDED (CFM). Rows include DINING ROOM, HALLWAY, OFFICE, STORAGE AREAS, and TOTAL.

GRILLS, REGISTERS, AND DIFFUSERS SCHEDULE

Table with columns: TAG, DESCRIPTION, FACE SIZE, MATERIAL, FINISH, MOUNTING, SUPPLIER, INSTALLER, MANUFACTURER, MODEL, REMARKS. Rows include CD1, CD2, CD3, ER2, PL2, PL4, RG1, RG2, RG3, SD1, SD2.

RECIRCULATING HOOD SCHEDULE

Table with columns: TAG, DESCRIPTION, MAX COOKING TEMP., EXHAUST PLENUM AIRFLOW (CFM), APPROXIMATE WEIGHT (lbs), SUPPLIER, INSTALLER, ELECTRICAL DATA, BASIS FOR DESIGN, REMARKS. Row includes HD-1.

FAN SCHEDULE

Table with columns: TAG, EXHAUST AIRFLOW (CFM), E.S.P. (IN. W.C.), DRIVE TYPE, MOTOR POWER (HP), WEIGHT (LBS), V/P/H, SUPPLIER, INSTALLER, Manufacturer, Model, SPECIAL REMARKS. Rows include EF-1, EF-2.

TYPE II HOOD SCHEDULE

Table with columns: TAG, DESCRIPTION, HOOD CONSTRUCTION, MAXIMUM COOKING TEMPERATURE (DEG. F), EXHAUST COLLARS, WEIGHT (LB), SUPPLIER, INSTALLER, MANUFACTURER, MODEL, REMARKS. Row includes HD-2.

CONDENSING UNIT SCHEDULE

Table with columns: TAG, DESCRIPTION, NUMBER OF COMPRESSORS, REFRIGERANT TYPE, WEIGHT (LB), ELECTRICAL, SUPPLIER, INSTALLER, MANUFACTURER, MODEL, REMARKS. Row includes CU-1.

ROOFTOP UNIT SCHEDULE

Table with columns: TAG, DESCRIPTION, COOLING CAPACITY (TONS), AIRFLOW, COOLING, HEATING, ELECTRICAL, SUPPLIER, INSTALLER, MANUFACTURER, MODEL, REMARKS. Rows include RTU-1, RTU-2.

LANDLORD NOTES

- ROOFTOP EQUIPMENT SHALL BE SIZED BASED ON TENANT'S HVAC SPACE LOAD CALCULATIONS.
TENANT'S DESIGN SHALL NOT HINDER THE OPERATION OR PERFORMANCE OF MALL'S COMMON AREA SYSTEMS.
ANY UNUSED HVAC EQUIPMENT, DUCTWORK, PIPING, WIRING, ETC. WITHIN OR SERVING THE DEMISED PREMISES MUST BE REMOVED AT THE GENERAL CONTRACTOR'S EXPENSE.
TENANTS WITH INTERNALLY GENERATED ODORS OR OTHER CONTAMINATES SHALL BE REQUIRED TO INSTALL AND MAINTAIN AN EXHAUST AIR SYSTEM TO MITIGATE ODOR MIGRATION TO ADJOINING TENANTS OR THE MALL COMMON AREAS.
MINIMUM EXHAUST CALCULATION: O.A. CFM + (SUPPLY AIR CFM X .10)=MINIMUM EXHAUST CFM REQUIRED.
THE GENERAL CONTRACTOR SHALL INSTALL AN INDICATOR PILOT LAMP 12" ABOVE THERMOSTAT FOR THE PURPOSE OF VERIFYING EXHAUST FAN OPERATION.
EXHAUST FAN OPERATION SHALL BE CONTINUOUS DURING OCCUPIED HOURS.

EXHAUST-AIR CALCULATION

MINIMUM EXHAUST = O.A. CFM + (SUPPLY AIR CFM x 0.10)
MINIMUM EXHAUST = 750 + (6900 x 0.10)
MINIMUM EXHAUST = 1440 CFM
PROVIDED EXHAUST = 1440 CFM

CAPTIVEAIRE - HVAC SYSTEM INFORMATION

CONTACT THE CAPTIVEAIRE NATIONAL ACCOUNT TEAM FOR HVAC SYSTEM INFORMATION AT: MARK PROFET (301) 825-5476 MARK.PROFET@CAPTIVEAIRE.COM

THE GENERAL CONTRACTOR SHALL PURCHASE THE EXHAUST FANS, TYPE II HOOD (WHEN APPLICABLE) AND ASSOCIATED ACCESSORIES THROUGH SWEETGREEN'S NATIONAL ACCOUNTS REPRESENTATIVE'S NOTED ABOVE.
ANY CHANGES OR VARIATION TO THE EQUIPMENT PACKAGE THAT WOULD AFFECT THE HVAC EQUIPMENT PACKAGE SHOULD BE BROUGHT TO THE ATTENTION OF THE CAPTIVEAIRE NATIONAL ACCOUNT TEAM AND THE ARCHITECT/ENGINEER OF RECORD AT THE TIME OF QUOTATION.

TRANE NATIONAL ACCOUNT - HVAC SYSTEM INFORMATION

CONTACT THE TRANE NATIONAL ACCOUNT TEAM FOR HVAC SYSTEM INFORMATION AT: EMAIL: SOCIALNA@TRANE.COM PHONE: (714)983-0505 OPTION 4 (NATIONAL ACCOUNTS TEAM) OR ANY OF THE BELOW SOUTHERN CALIFORNIA NATIONAL ACCOUNTS TEAM MEMBERS: DEREK VAN RIPER, MARIA G. GARCIA, JEFF SWANSON, DEREK.VANRIPPER@TRANE.COM, MGGARCIA@TRANE.COM, JSWANSON@TRANE.COM

SWEETGREEN SHALL FURNISH THE MECHANICAL SYSTEM AND ASSOCIATED ACCESSORIES THROUGH THEIR NATIONAL ACCOUNTS REPRESENTATIVES NOTED ABOVE. THE GENERAL CONTRACTOR SHALL INSTALL THE SYSTEM AND ACCESSORIES AS NOTED IN THESE DRAWINGS AND AS REQUIRED FOR A COMPLETE AND FUNCTIONING SYSTEM. COORDINATE WITH SWEETGREEN AND THE REPRESENTATIVES AS REQUIRED AND NOTED ON THE PLANS.

ANY CHANGES OR VARIATION TO THE EQUIPMENT PACKAGE THAT WOULD AFFECT THE HVAC EQUIPMENT PACKAGE SHOULD BE BROUGHT TO THE ATTENTION OF THE TRANE NATIONAL ACCOUNT TEAM AND THE ARCHITECT/ENGINEER OF RECORD AT THE TIME OF QUOTATION.

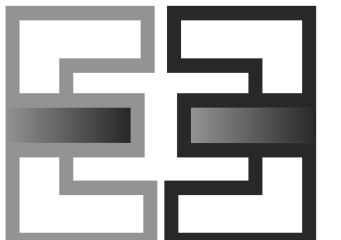


sweetgreen

3101 W. EXPOSITION BLVD.
LOS ANGELES, CALIFORNIA 90018

THESE DRAWINGS & SPECIFICATIONS ARE CONFIDENTIAL AND SHALL REMAIN THE SOLE PROPERTY OF SWEETGREEN CORPORATION. THEY SHALL NOT BE REPRODUCED IN WHOLE OR IN PART, SHARED WITH THIRD PARTIES OR USED IN ANY MANNER ON OTHER PROJECTS OR EXTENSIONS TO THIS PROJECT WITHOUT THE PRIOR WRITTEN CONSENT OF SWEETGREEN CORPORATION. THESE DRAWINGS & SPECIFICATIONS ARE INTENDED TO EXPRESS DESIGN INTENT FOR A PROTOTYPICAL SWEETGREEN STORE WHICH IS SUBJECT TO CHANGE AT ANY TIME AND MAY NOT REFLECT ACTUAL SITE CONDITIONS. NEITHER PARTY SHALL HAVE ANY OBLIGATION OR LIABILITY TO THE OTHER EXCEPT AS STATED ABOVE UNTIL A WRITTEN AGREEMENT IS FULLY EXECUTED.

ENGINEER OF RECORD:



EVERJ ENGINEERING, INC.
1509 BUCK TRAIL LANE
WORTHINGTON, OH 43085
240-319-0822
www.everjengineering.com

STAMP:

**CONSTRUCTION
ISSUE SET
2-25-2022**

11/18/2021

PROJECT INFORMATION:
86TH & KEYSTONE

PROJECT INFORMATION:
**8702 KEYSTONE CROSSING
INDIANAPOLIS, IN 46240**

DRAWN BY: JAE
CHECKED BY: JAE
PROJECT MANAGER: JAE
SG DESIGN MANAGER: LK
SG CONSTR. MANAGER: JB
PROJECT NO: 210026
TEMPLATE VERSION: 04/02/2021

REVISIONS
REV. DATE DESCRIPTION
2 02/10/2022 WH WALL & STR CONN

HVAC DETAILS

M-300

SEQUENCE OF OPERATIONS RTU-1 & RTU-2

OCCUPIED MODE:
FAN OPERATION/OUTSIDE AIR DAMPER: WHEN SCHEDULED BY THE THERMOSTAT TO BE IN OCCUPIED MODE, THE ROOFTOP UNIT FANS ARE TO START AND RUN CONTINUOUSLY AND THE OUTSIDE AIR DAMPERS SHALL MODULATE TO THE MINIMUM POSITION.

HEATING: ON A FALL IN SPACE TEMPERATURE BELOW THE SETPOINT OF 70 DEGREES (ADJUSTABLE) THE FIRST STAGE OF HEATING SHALL BE ENERGIZED TO MAINTAIN THE SETPOINT. UPON A CONTINUED FALL IN SPACE TEMPERATURE, THE SECOND STAGE SHALL BE ENERGIZED (WHERE APPLICABLE) TO MAINTAIN THE SETPOINT.

COOLING: ON A RISE IN SPACE TEMPERATURE ABOVE THE SETPOINT OF 72 DEGREES (ADJUSTABLE), WHEN THE ENTHALPY OF THE OUTSIDE AIR IS FAVORABLE, THE OUTSIDE AIR DAMPER SHALL MODULATE OPEN UP TO 100% TO PROVIDE COOLING FOR THE SPACE. WHEN THE ENTHALPY OF THE OUTSIDE AIR IS NOT FAVORABLE, OR THERE IS A SUDDEN DEMAND FOR SPACE COOLING, THE OUTSIDE AIR DAMPER SHALL MODULATE TO THE MINIMUM POSITION AND THE COOLING SHALL BE ENERGIZED AS REQUIRED TO MAINTAIN THE SETPOINT.

DEHUMIDIFICATION: UPON A SIGNAL FROM THE HUMIDISTAT THAT DEHUMIDIFICATION IS REQUIRED, THE COOLING COIL SHALL BE ENERGIZED TO SATISFACTORILY DEHUMIDIFY THE AIR AND THE HOT GAS REHEAT COIL SHALL BE ENERGIZED AS REQUIRED TO MAINTAIN THE SPACE SETPOINT.

UNOCCUPIED MODE:
FAN OPERATION/OUTSIDE AIR DAMPER: WHEN SCHEDULED BY THE THERMOSTAT TO BE IN UNOCCUPIED MODE, THE ROOFTOP UNIT FANS ARE TO BE OFF AND THE OUTSIDE AIR DAMPERS SHALL REMAIN CLOSED.

HEATING: ON A FALL IN SPACE TEMPERATURE BELOW THE SETPOINT OF 65 DEGREES (ADJUSTABLE) THE ROOFTOP UNIT FAN SHALL START AND THE FIRST STAGE OF HEATING SHALL BE ENERGIZED TO MAINTAIN THE SETPOINT. UPON A CONTINUED FALL IN SPACE TEMPERATURE, THE SECOND STAGE SHALL BE ENERGIZED (WHERE APPLICABLE) TO MAINTAIN THE SETPOINT.

COOLING: ON A RISE IN SPACE TEMPERATURE ABOVE THE SETPOINT OF 85 DEGREES (ADJUSTABLE) THE ROOFTOP UNIT FAN SHALL START. WHEN THE ENTHALPY OF THE OUTSIDE AIR IS FAVORABLE, THE OUTSIDE AIR DAMPER SHALL MODULATE OPEN UP TO 100% TO PROVIDE COOLING FOR THE SPACE. WHEN THE ENTHALPY OF THE OUTSIDE AIR IS NOT FAVORABLE, OR THERE IS A SUDDEN DEMAND FOR SPACE COOLING, THE OUTSIDE AIR DAMPER SHALL REMAIN IN THE CLOSED POSITION AND THE COOLING SHALL BE ENERGIZED AS REQUIRED TO MAINTAIN THE SETPOINT.

DEHUMIDIFICATION: UPON A SIGNAL FROM THE HUMIDISTAT THAT DEHUMIDIFICATION IS REQUIRED THE ROOFTOP UNIT FAN SHALL START. THE COOLING COIL SHALL BE ENERGIZED TO SATISFACTORILY DEHUMIDIFY THE AIR AND THE HOT GAS REHEAT COIL SHALL BE ENERGIZED AS REQUIRED TO MAINTAIN THE SPACE SETPOINT.

EMERGENCY MODE:
FAN OPERATION/OUTSIDE AIR DAMPER: UPON A SIGNAL FROM THE FIRE ALARM SYSTEM, THE FAN SHALL STOP AND THE OUTSIDE AIR DAMPER SHALL CLOSE.

SEQUENCE OF OPERATIONS EF-1 & EF-2

OCCUPIED MODE:
FAN OPERATION: WHEN SCHEDULED BY THE TIME CLOCK TO BE IN OCCUPIED MODE, THE EXHAUST FAN IS TO START AND RUN CONTINUOUSLY.

UNOCCUPIED MODE:
FAN OPERATION: WHEN SCHEDULED BY THE TIME CLOCK TO BE IN UNOCCUPIED MODE, THE EXHAUST FAN SHALL REMAIN OFF.

EMERGENCY MODE:
FAN OPERATION/OUTSIDE AIR DAMPER: UPON A SIGNAL FROM THE FIRE ALARM SYSTEM, THE FAN SHALL STOP.

3 SEQUENCE OF OPERATIONS N.T.S.

