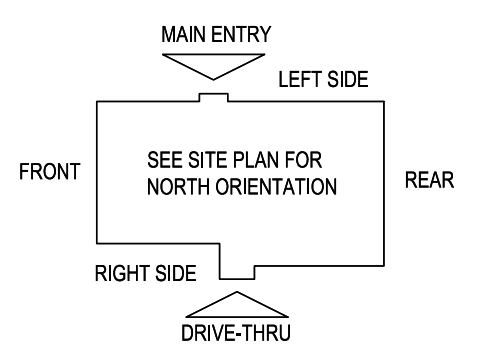


E5 HVAC PLAN
SCALE: 1/4" = 1'-0"



NOTE: ALL DUCTWORK TO BE LOCATED IN TRUSS SPACE WHERE POSSIBLE.
SEE FRAMING PLAN.

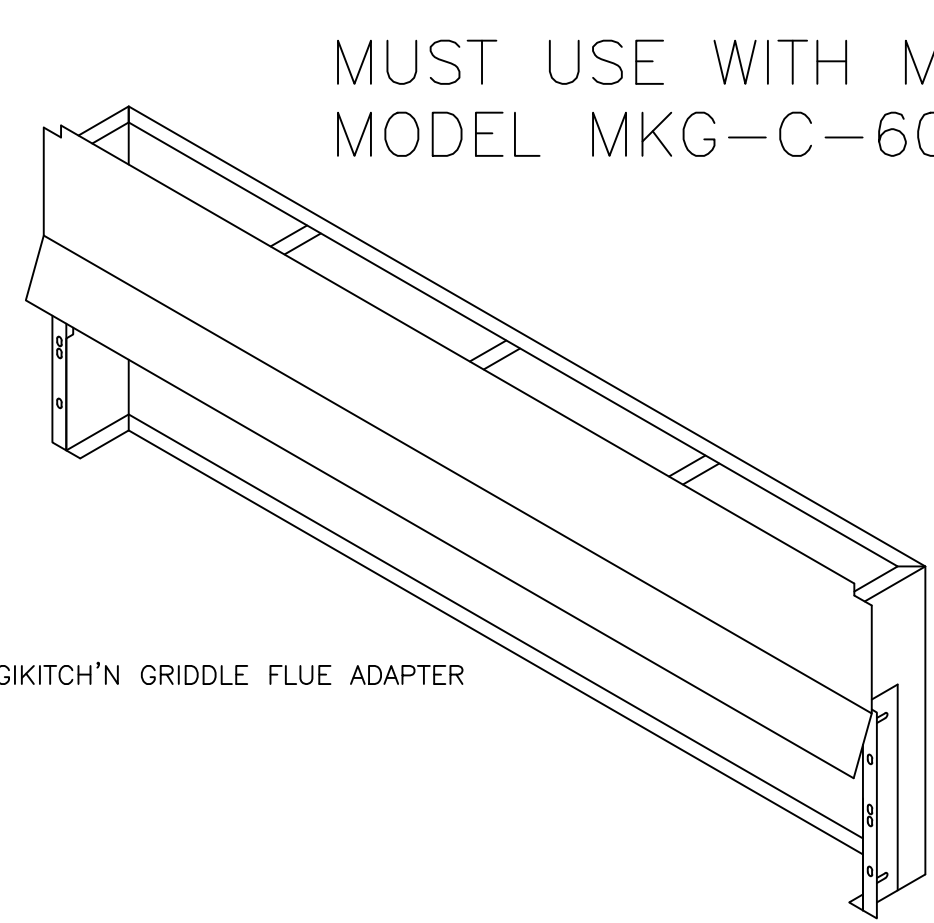
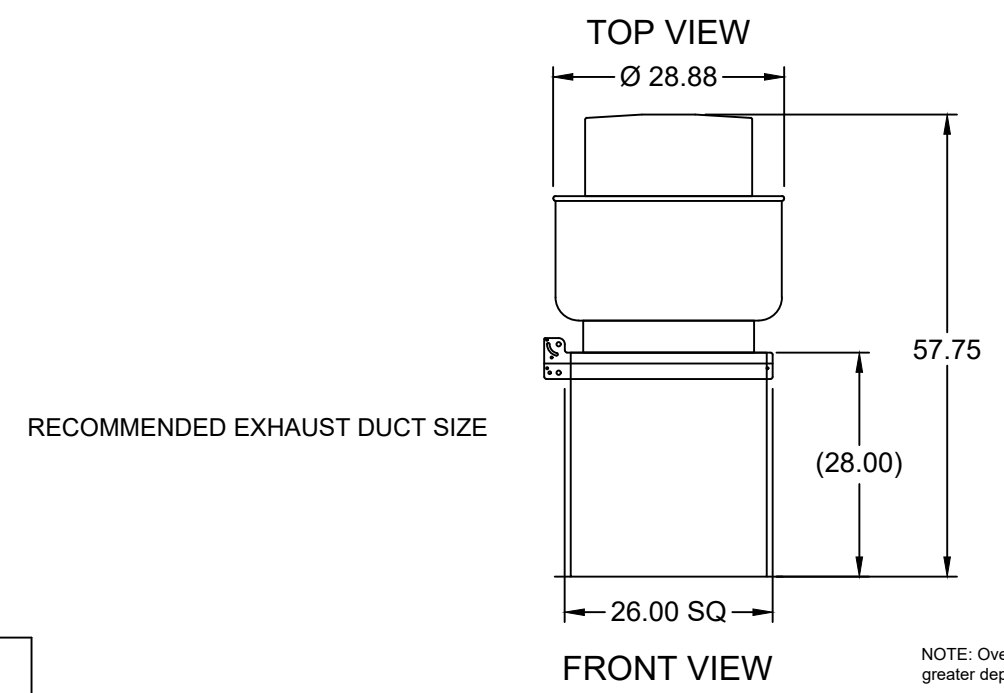
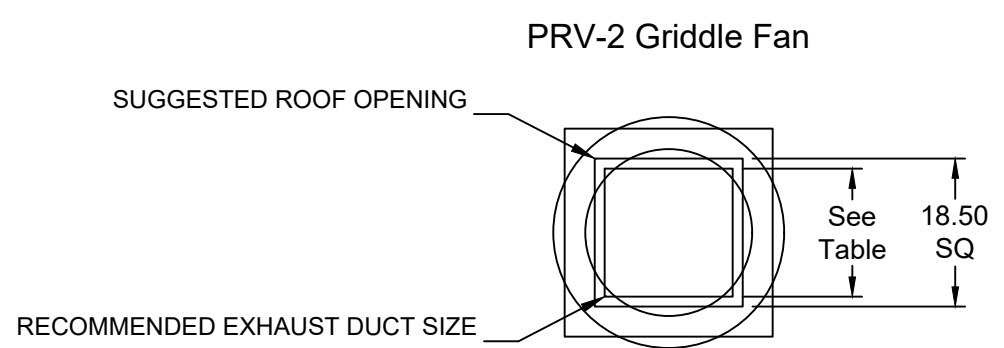
HVAC SETPOINTS RECOMMENDED BY CORPORATE OPERATIONAL GUIDELINES:
1. DINING: HEATING 70 DEGF, COOLING 72 DEGF
2. KITCHEN: HEATING 68 DEGF, COOLING 74 DEGF

SUPPLY DUCTWORK SIZING TABLE*

ROUND		RECTANGULAR	
SIZE	CFM RANGE	SIZE	CFM RANGE
8"	115 - 235	8"x8"	205 - 300
10"	240 - 435	10"x8"	305 - 400
12"	440 - 710	10"x10"	405 - 550
14"	715 - 1,070	12"x10"	555 - 700
16"	1,075 - 1,530	12"x12"	705 - 900
18"	1,535 - 2,090	14"x12"	905 - 1,105
20"	2,095 - 2,760	16"x12"	1,110 - 1,315
22"	2,765 - 3,550	18"x12"	1,320 - 1,520
24"	3,555 - 4,470	20"x12"	1,525 - 1,740
*CONTRACTOR MAY SUBSTITUTE RECTANGULAR FOR ROUND DUCTWORK ON MAIN RUNS AT THEIR DISCRETION. BRANCHES TO DIFFUSERS TO REMAIN ROUND.			
		22"x12"	1,745 - 1,950
		24"x12"	1,955 - 2,170
		26"x12"	2,175 - 2,400
		28"x12"	2,405 - 2,610
		30"x12"	2,615 - 2,840
		32"x12"	2,845 - 3,070
		34"x12"	3,075 - 3,290
		36"x12"	3,295 - 3,520
		36"x14"	3,525 - 4,420

DIFFUSER, REGISTER, AND GRILLE SCHEDULE

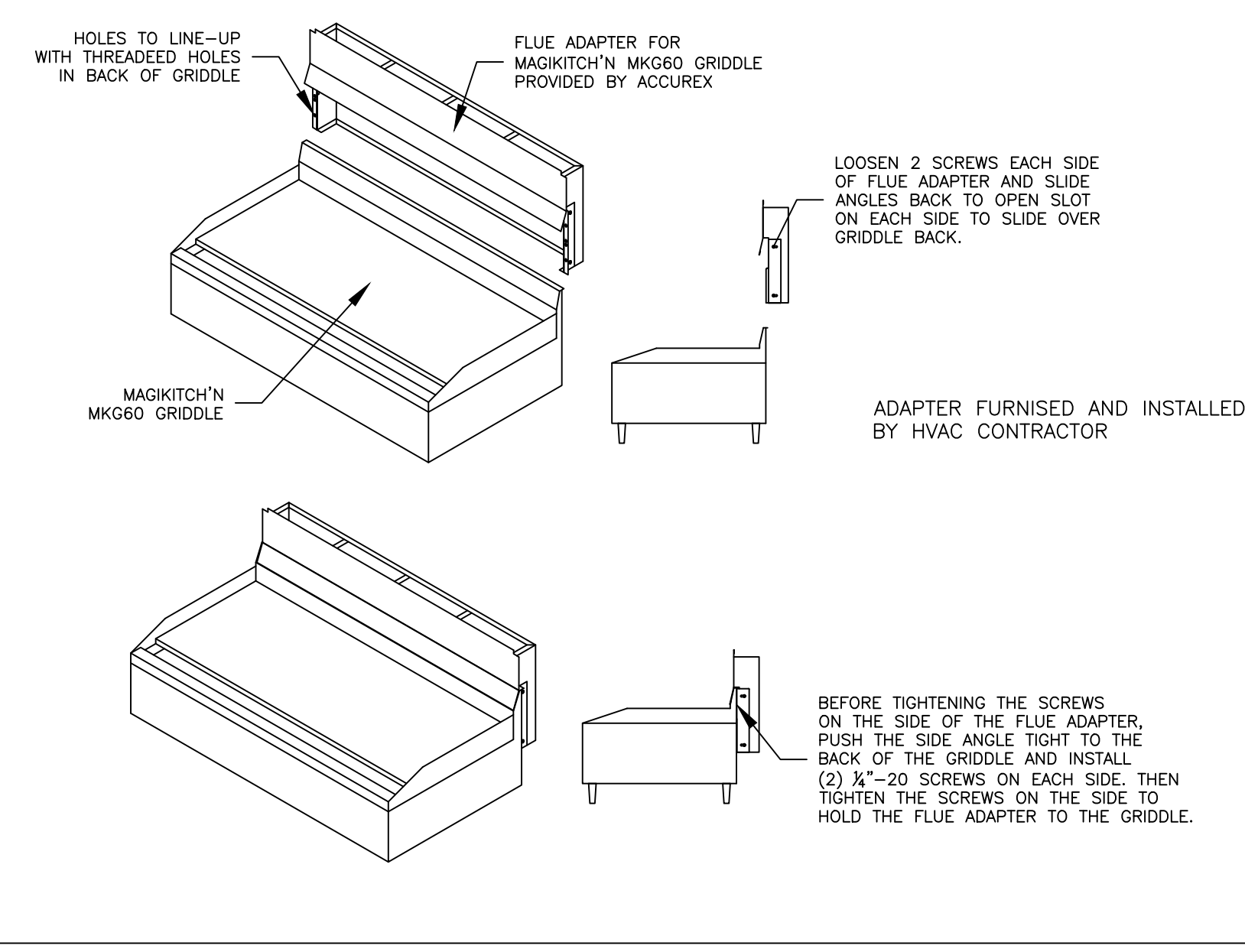
TAG	SERVICE	TYPE	MATERIAL	THROW	FACE	NECK	MOUNTING	MANUFACTURER/MODEL	Notes
SD-1	SUPPLY	LOUVERED	STEEL	4-WAY	24X24	SEE PLAN	LAY-IN	CARNES SFFA24	2, 4
SD-2 - NOT USED									
SD-3	SUPPLY	LOUVERED	STEEL	3-WAY	SEE PLAN	SEE PLAN	SURFACE	CARNES SKSA	2, 4
SD-4	SUPPLY	LOUVERED	STEEL	4-WAY	12X12	SEE PLAN	SURFACE	CARNES SKSA	1, 2, 4
SD-5	SUPPLY	PERFORATED	STEEL	PERFORATED	24X24	SEE PLAN	LAY-IN	CARNES SPRB24	2, 4
RG-1	RETURN	SQUARE EGGRATE	ALUMINUM	N/A	24X24	22x22	LAY-IN	CARNES RA1PMF	2, 3, 4
EG-1	RETURN	LOUVERED GRILLE	STEEL	N/A	12X12	SEE PLAN	SURFACE	CARNES RTLAH	1, 2, 4
TG-1	TRANSFER	LOUVERED GRILLE	STEEL	N/A	SEE PLAN	SEE PLAN	SURFACE	CARNES RTLAH	2, 4
DIFFUSER NOTES:									
1. PROVIDE w/ ADJUSTABLE OPPOSED BLADE DAMPER									
2. VERIFY ALL DIFFUSERS AND RETURN GRILLE COLORS WITH OWNER AND ARCHITECT									
3. PROVIDE w/ 22X22 PLENUM BOX.									
4. ALL DIFFUSERS AND RETURNS LOCATED IN BLACK CEILING SHALL BE FLAT BLACK FINISH.									



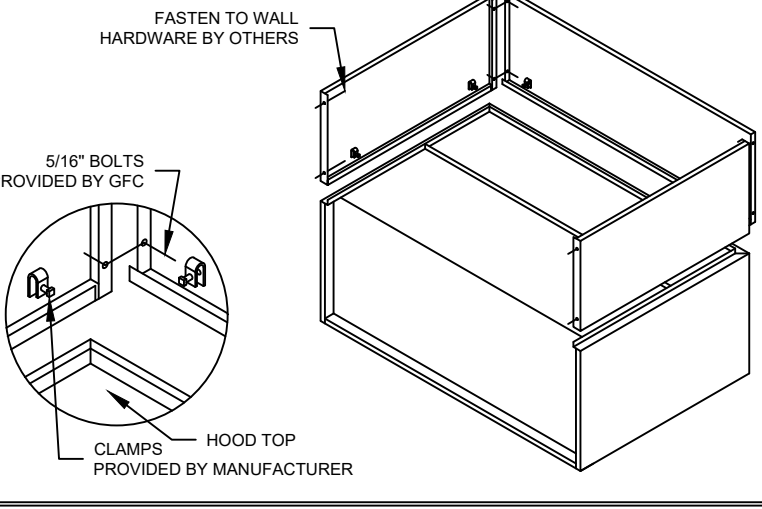
MUST USE WITH MAGIKITCH'N MODEL MKG-C-60

60" MAGIKITCH'N GRIDDLE FLUE ADAPTER

MAGIKITCH'N MKG-C-60 GRIDDLE FLUE ADAPTER MOUNTING INSTRUCTIONS



ENCLOSURE PANEL INSTALLATION DETAIL

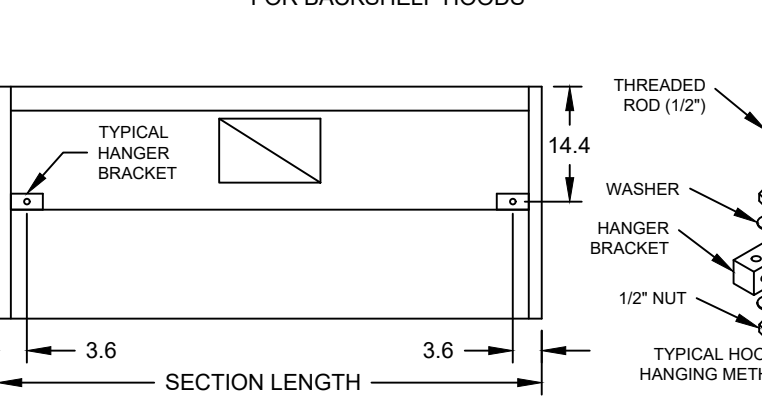


HOOD HANGING HEIGHT FOR FIRE SYSTEMS

VERIFICATION OF HOOD HANGING HEIGHT ABOVE FINISHED FLOOR (A.F.F.) IS REQUIRED FOR CORRECT PLACEMENT OF FIRE SYSTEM NOZZLES.

- RECOMMENDED HANGING HEIGHT = 60" FROM FINISHED FLOOR TO LOWER FRONT EDGE OF HOOD.
- OTHER HANGING HEIGHT = _____ FROM FINISHED FLOOR TO LOWER EDGE OF HOOD.

HOOD HANGER BRACKET DETAIL FOR BACKSHELF HOODS



GENERAL DRAWING NOTES

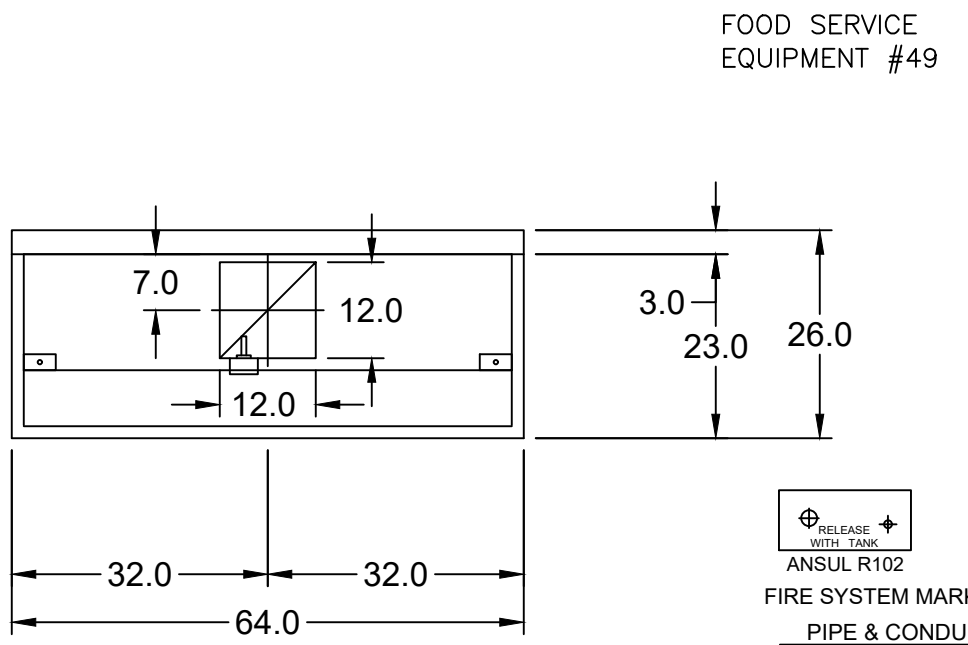
Verify building entry conditions or limitations for equipment access to space.
 Verify type and height of finished ceiling and if hood(s) may extend above finished ceiling (if required).
 Seismic installation and bracing of equipment is by others.
 Greenheck will not accept liability for problems that result from sub-standard installation. Including field electrical wiring that deviate from supplied diagrams, globe conditions (ductwork, fuel types and structural conditions) that GFC has not been notified of at the time of ordering. Or use of this equipment other than that for which it is designed.
 It is the responsibility of the purchaser to hire qualified personnel for installation and start-up of all equipment. Installation and start-up information is shipped with all equipment via the Installation, Operation and Maintenance Manual (IOM), also included is a troubleshooting guide. Have all start-up info available prior to any warranty claims and/or factory technical support.

VENTILATION SYSTEM NOTES

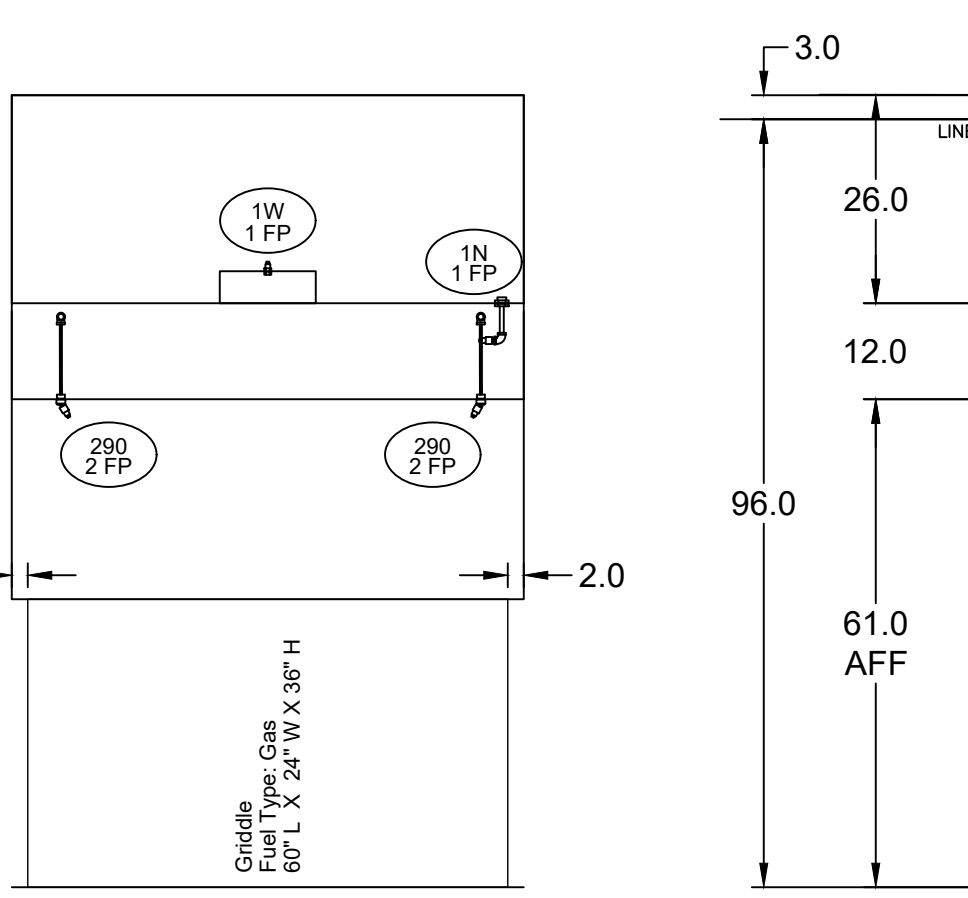
Greenheck ventilators are designed in compliance with all national codes: NFPA # 96, national electric code, BOCA, uniform mechanical code, international mechanical code, and southern building conference. See national evaluation report #436 for allowable values, and/or conditions of use concerning material presented in this document. Local codes may vary. It is the responsibility of the purchaser to submit drawings to local authorities.
 Exhaust and supply air volumes are to be maintained within -5% to +10% tolerance of values indicated. Static pressure(s) indicated are for the ventilator at the duct connection(s) only.
 The grease filter face velocities are based on the filter manufacturers recommendations for maximum grease extraction. Inlet opening air velocities for waterwash, dry cartridge and high velocity cartridge filters manufactured by Greenheck are designed to deliver maximum grease extraction.
 Hoods installation (by others unless otherwise noted) shall be in accordance with NFPA # 96 and applicable building codes.

PROPRIETARY INFORMATION NOTICE

This document is and contains confidential trade secret information of the company and remains property of the company and is to be returned upon request. Neither it nor information it contains may be reproduced or disclosed to persons not having a need-to-know consistent with the purpose of the loan document without written permission.

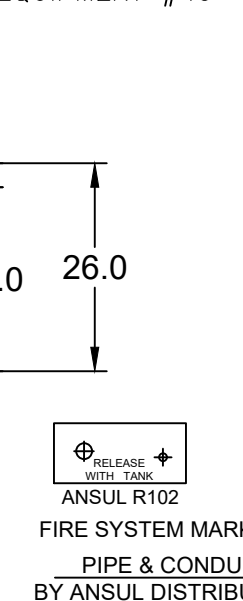


MARK: ITEM #49 PLAN VIEW

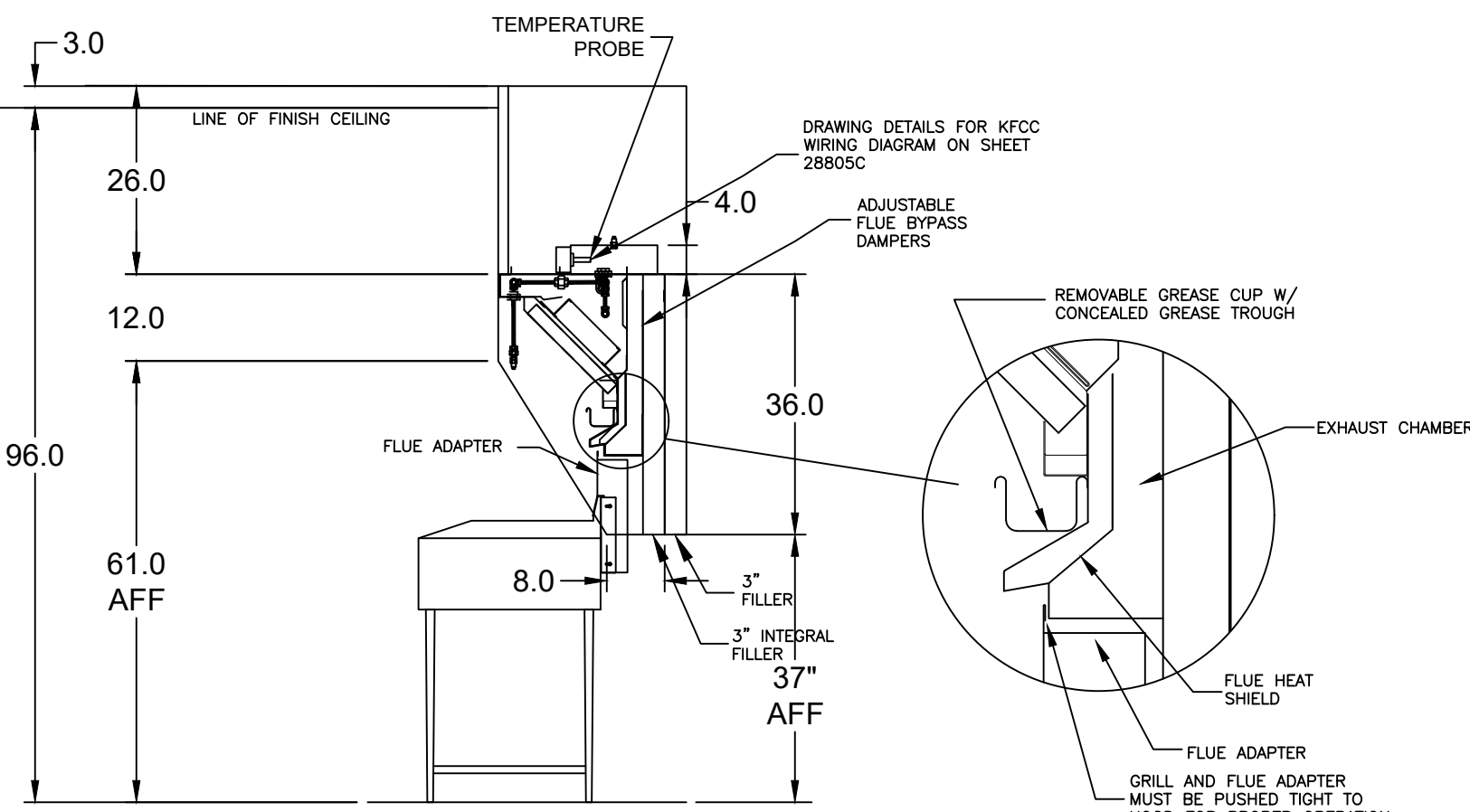


MARK: ITEM #49 ELEVATION VIEW

FOOD SERVICE EQUIPMENT #49



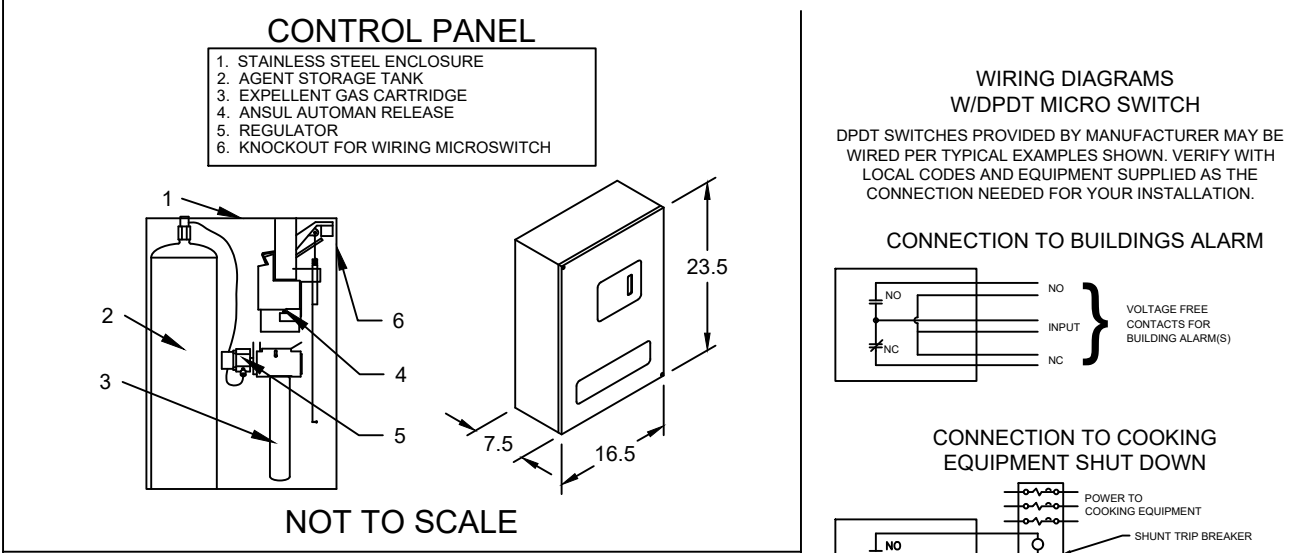
MARK: ITEM #49 SECTION VIEW



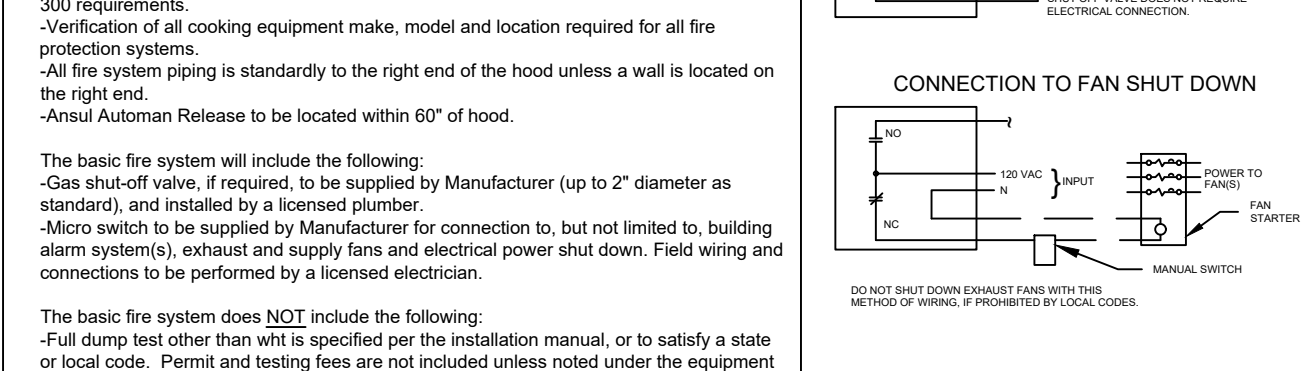
MARK: ITEM #49 SECTION VIEW

EQUIPMENT SCHEDULE												
TYPE 1 KITCHEN HOOD					MARK: ITEM#49							
HOOD NO.	ACCUREX MODEL STYLE / CONFIGURATION	HOOD DIMENSIONS			GREASE CUP OR DRAIN	HOOD TEMP. RATING	TOTAL WEIGHT	SECTION LOCATION				
1	XGEP-66-S SINGLE WALL EXHAUST ONLY LOW PROXIMITY	64 IN.	TOP 23 IN. FRONT 12 IN. BOT 8 IN. BACK 36 IN.	RIGHT	600 DEG F	136.0 LBS.	SINGLE					
ILLUMINATION DETAILS					GREASE FILTRATION DETAILS							
HOOD NO.	FIXTURE TYPE	QTY	INTENSITY FT CANDLES	TYPE / MODEL MATERIAL	QTY	LENGTH	HEIGHT					
1	NONE	NA	0 / 0 IN. CC	GREASE GRABBER STAINLESS STEEL	4	16 IN.	16 IN.					
HOOD SECTION # COLLAR #		EXHAUST PLENUM COLLARS										
1.1		DISTANCE TO END (IN.)	WIDTH (IN.)	LENGTH (IN.)	DIAMETER (IN.)	VOLUME (CFM)	S.P. (IN. WC)	VELOCITY (FT/MIN)				
		32	12	12	NA	1500	1.918	1500				
TOTAL EXHAUST CFM - SECTION 1		1500 = 281 CFM / FT										
OPTIONS AND ACCESSORIES												
430 STAINLESS STEEL WHERE EXPOSED UL 710 LISTED W/ OUT EXHAUST FIRE DAMPER - UL #R25625 BACK NON-INTEGRAL AIR SPACE - 3 IN WIDE 28 IN HIGH CEILING ENCLOSURES - FRONT LEFT RIGHT - FIELD INSTALLED FACTORY MOUNTED EXHAUST COLLAR(S) THIS HOOD IS PART OF A TEMPERATURE INTERLOCK CONTROL SYSTEM INCLUDES PERFORMANCE ENHANCING LIP (PEL) TECHNOLOGY STANDING SEAM CONSTRUCTION FOR SUPERIOR STRENGTH EMBOSSED STAINLESS STEEL FINISH FOR HIGH CORROSION RESISTANCE EQUIPMENT SPECIFIC S/S FLUE ADAPTER												
SPECIAL DESIGN REQUESTS												
SDR #K1100145 - FLUE BYPASS HOOD												
FIRE SUPPRESSION SYSTEM												
MANUFACTURER / MODEL SUPPRESSANT TYPE					FLOW POINTS		SUPPLY LINE		DETECTION	MOUNTING		
ANSUL R-102 WET CHEMICAL					6 UTILIZED 11 AVAILABLE		CONTINUOUS		FUSIBLE LINK	REMOTE MOUNTED		
FULL INSTALLATION (INCLUDES PRE-PIPED HOODS) WITH DETECTION AND FACTORY COORDINATED INSTALL CHROME SLEEVES FOR FACTORY PROVIDED APPLIANCES DROPS - INCLUDED SUPPRESSION AGENT - INCLUDED - 3 GAL. - (1) 3 TANK(S) GAS VALVE - INCLUDED - MECHANICAL SHUTOFF VALVE SUPPLIED UP TO 2" REMOTE PULL STATION - STANDARD - INSTALLATION AT SINGLE POINT OF EGRESS METAL BLOW-OFF CAPS - INCLUDED FIRE SYSTEM PERMIT - REQUIRED - FEE INCLUDED 360°F. FUSIBLE LINK OR AS TESTED AND INSTALLED BY LOCAL INSTALLER PER UL MANUAL												
FIRE SYSTEM PROTECTED HOOD(S) (UL-300) (MARK NAME / SECTION)												
GRILL HOOD SECTION 1 - (LENGTH 64.0 IN.) - LOW PROXIMITY HOOD - GREASE GRABBER FILTRATION SYSTEM												
Belt Drive Upblast Centrifugal Roof Exhaust Fan					MARK: PRV-2							
Qty	Accurex Model	Volume (CFM)	SP (in wg)	FRPM	Operating Power (hp)	Weight (lb.)	Size (tp)	V/CP	Enct.	Motor RPM	Windings	FLA
1	XRUB-160XP-15	1500	2.337	2,411	1.29	171	1.5	208/60/3	CP	1725	1	6.6
OPTIONS AND ACCESSORIES												
UL/GUL 762 Listed - "Power Ventilators for Rest. Exh. Appliances" Switch, NEMA-1, (PN N1TSND-3-30) Toggle. Shipped with unit Larger curb cap size - 28" Square Roof curb-Galv., GFP-26-G28, Under sized 1.5" Total Hinged Base (Attached) High Temp Curb Seal Rated for Continuous duty at 2000F (Attached) Clean-out Port Grease Trap with Drain Connection (PN 475538) Heat Baffle (Attached) Bearings with Grease Fittings, L10 life of 100,000 hrs (L50 avg. life 500,000 hrs)												

ANSUL R102 (WET CHEMICAL) FIRE PROTECTION SYSTEM - MODEL FSSC



NOTES:
 Wet chemical fire protection system to be Ansul R-102, designed in compliance with UL 300 requirements.
 -Verification of all cooking equipment make, model and location required for all fire protection systems.
 -All fire system piping is standard to the right end of the hood unless a wall is located on the right end.
 -Ansul Automon Release to be located within 60" of hood.
 The basic fire system will include the following:
 -Gas shut-off valve, if required, to be supplied by Manufacturer (up to 2" diameter as standard), and installed by a licensed plumber.
 -Micro switch to be supplied by Manufacturer for connection to, but not limited to, building alarm system(s), exhaust and supply fans and electrical power shut-down. Field wiring and connections to be performed by a licensed electrician.
 The basic fire system does NOT include the following:
 -Full dump test other than what is specified per the installation manual, or to satisfy a state or local code. Permit and testing fees are not included unless noted under the equipment schedule for the fire system.
 -More than two trips to the jobsite or special transportation, or overnight lodging requirements in remote areas. Normal travel distance is first 50 mi. (80.5 km) from office.
 -Special classes or additional labor for access to security sensitive areas.
 -Installation of gas shut-off valve.
 -Special drawings required to satisfy state or local code. Plan examination fees, PE or FS Approval Stamp.
 -Union labor, Government labor, or Prevailing wages required for final field hook-up.
 -Any and all electrical components/connections required to shut down fans, shut off device for electric cooking equipment (shunt trip breaker), or activate an alarm system, etc.
 -Any dismantling or reassembly required to gain access to the fire suppression piping located on the top of the hood.
 -Rough-in hidden conduit for remote pull station or gas valve (flush mounted pull station)
 -Installation of more than (1) remote pull station or distances greater than 20 ft (6.1M).
 -Parts or labor required to correct piping due to cooking equipment changes or deviation from plans. OR Any changes for missing or additional parts other than those indicated on the Fire Suppression Detail.



NOTES:
 1. DENOTES FIELD INSTALLATION.
 2. DENOTES FACTORY INSTALLATION.
 3. DO NOT USE BLACK WIRE IN SNAP ACTION SWITCH IN NORMAL INSTALLATION. BLACK WIRE TO BE USED ONLY FOR EXTRANEALOUS ALARM LIGHT CIRCUITS, ETC.

Thank you for your interest in Accurex

SUBMITTAL

Please return one approved print to your Greenheck Representative including signature, date, and answers to all submittal "verify" notes and questions. Fabrication will not begin until after approved drawings are received.

APPROVED AS SUBMITTED
 APPROVED AS NOTED
 REJECTED - REVISE AND RESUBMIT

SIGNATURE _____ DATE _____

REV DESCRIPTION DATE

ACCUREX

CULVER'S MASTER TEMPLATE

SCALE 1/24

DATE 4-1-2022

NO. 28805A

© 2022

NEW CULVER'S RESTAURANT
 1001 Connexion Way
 Columbia City, IN 46725
 County of WHITLEY

OWNER: SUNBUNNY HOLDINGS, LLC
 41 EMS D3 Lane
 Syracuse, IN 46567
 Steve Leuter
 Prairie du Sac, WI 53578
 608-643-7980

OWNER: OLLMANN ASSOCIATES ARCHITECTS, P.C.
 200 South State Street
 Belleville, Illinois 61008
 815-544-7190 Phone

© OAA
 All rights reserved; any copying, transmittal or disclosure subject to OAA written approval.

Revision: _____

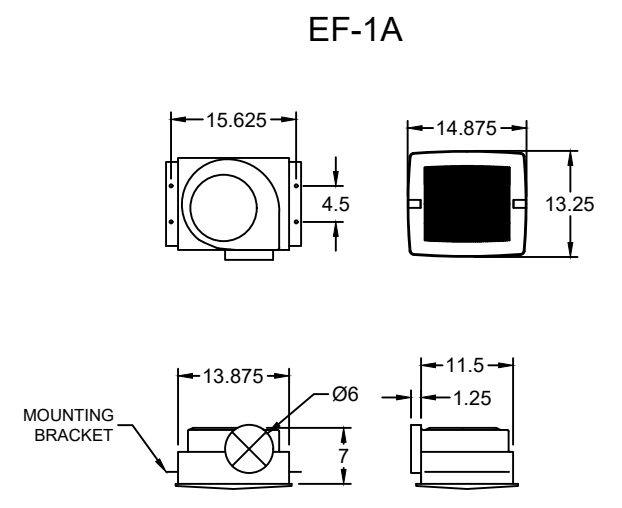
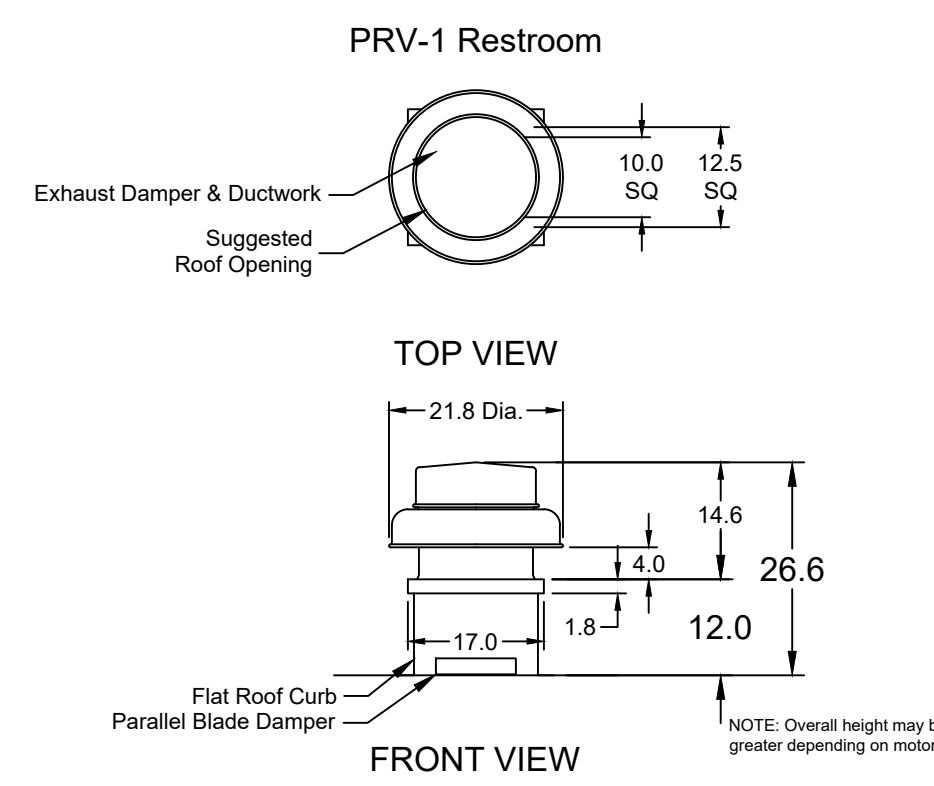
Date: 4-1-2022

CONSTRUCTION SET 5-16-2022

GRIDDLE HOOD/EXHAUST SCHEDULE & DETAILS

2021-143

M202



EQUIPMENT SCHEDULE			
ELECTRICAL CONTROL BOX			
DESCRIPTION / ACCUREX MODEL	EXHAUST FAN QTY	SUPPLY FAN QTY	MARK: KXC
MOUNTING LOCATION (CONTROL PANEL / SWITCHES)			
KITCHEN FAN CONTROL CENTER / XKC SHIP LOOSE / SHIP LOOSE FOR REMOTE MOUNTING	2	0	60 CYCLE
CONTROL PANEL ENCLOSURE - 16 GA 304 STAINLESS STEEL ENCLOSURE (NEMA-1) - DIMENSIONS 18 X 20 X 6			
WIRING DIAGRAM # T100-2 - 20			
STARTERS PROVIDED IN CONTROL PANEL - QTY 2			
USER INTERFACE CONTROL - QTY 1			
INTEGRATED EXHAUST TEMPERATURE INTERLOCK SYSTEM			
-FACTORY MOUNTED EXHAUST TEMPERATURE SENSORS - QTY 2			
-COMPLIES WITH INTERNATIONAL MECHANICAL CODE 2006 SECTION 507.2.1.1			
TURN ON EXHAUST IN FIRE			
THERMAL OVERLOADS IN CABINET			
SPECIAL DESIGN REQUESTS			
SDR #K0800240 - USE KIT #852883, WIRING DIAG. #Z2905338			

EQUIPMENT SCHEDULE												
Direct Drive Centrifugal Roof Exhaust Fan												
City	Accurex Model	Volume (CFM)	SP (in wg)	FRPM	Operating Power (hp)	Weight (Lb.)	Size (hp)	V/CP	Encr.	Motor RPM	Windings	FLA
	XRED-090-VG	300	0.5	1465	0.060	30	0.1	11560/1	OP	1725	1	NA

EQUIPMENT SCHEDULE												
Ceiling Exhaust Fan												
City	Accurex Model	Volume (CFM)	SP (in wg)	FRPM	Operating Power (hp)	Weight (Lb.)	Size (hp)	V/CP	Encr.	Motor RPM	Windings	FLA
	XCR-B80	75	0.125	855	0.01	10	0.0	11560/1	OP	900	1	NA



MARK: CONTROLS

CAUTION
UNIT SHALL BE GROUNDED IN ACCORDANCE WITH N.E.C. POWER MUST BE OFF WHILE SERVICING.

LISTED 438M COMMERCIAL APPLIANCE OUTLET CENTER ELECTRICAL RATINGS: 120V, 1PHASE, 60HZ, 15A BASE FILE #E200616, ML FILE #E313951

THESE DRAWINGS SHALL NOT BE REMOVED FROM THIS EQUIPMENT. USE COPPER CONDUCTORS RATED TO 90°C UNLESS SPECIFIED. TORQUE CONTROL & GROUND BLOCKS TO 8 LBS. IN. TORQUE POWER LUGS/SCREWS TO COMPONENT RATINGS LISTED. FIELD CONTROL WIRING RESISTANCE SHOULD NOT EXCEED 0.75 OHM. SEE IOM FOR ADDITIONAL INFORMATION, OR CALL ACCUREX AT 1-800-371-6858.

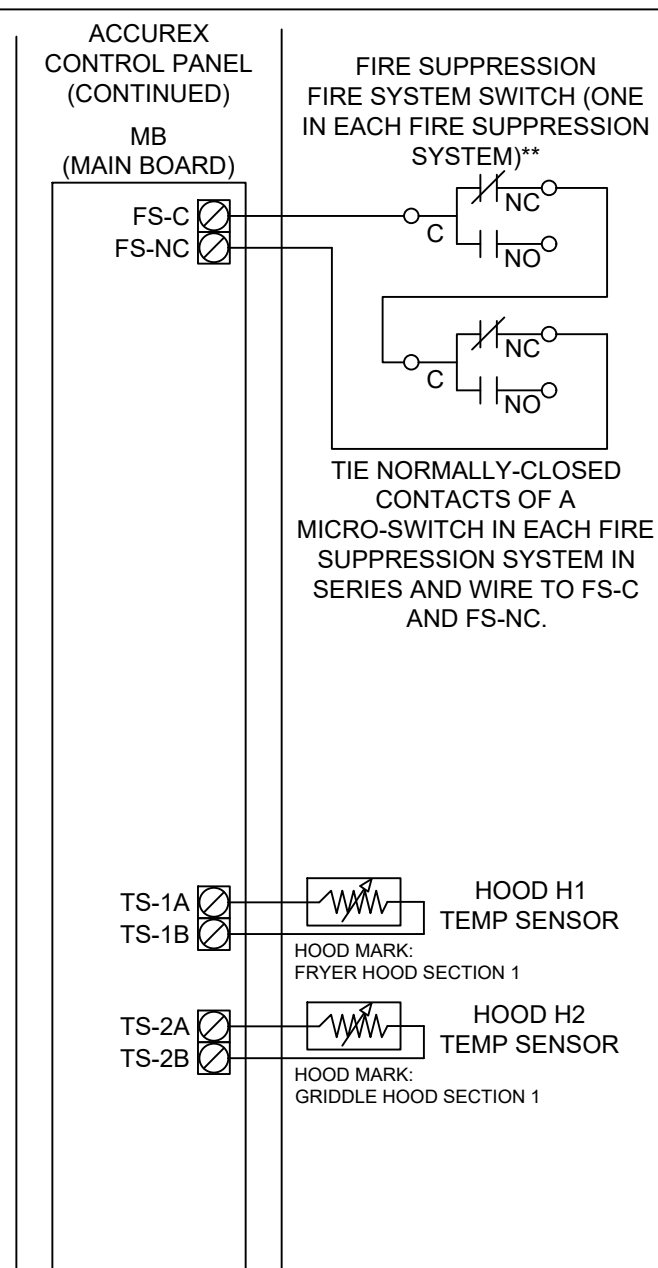
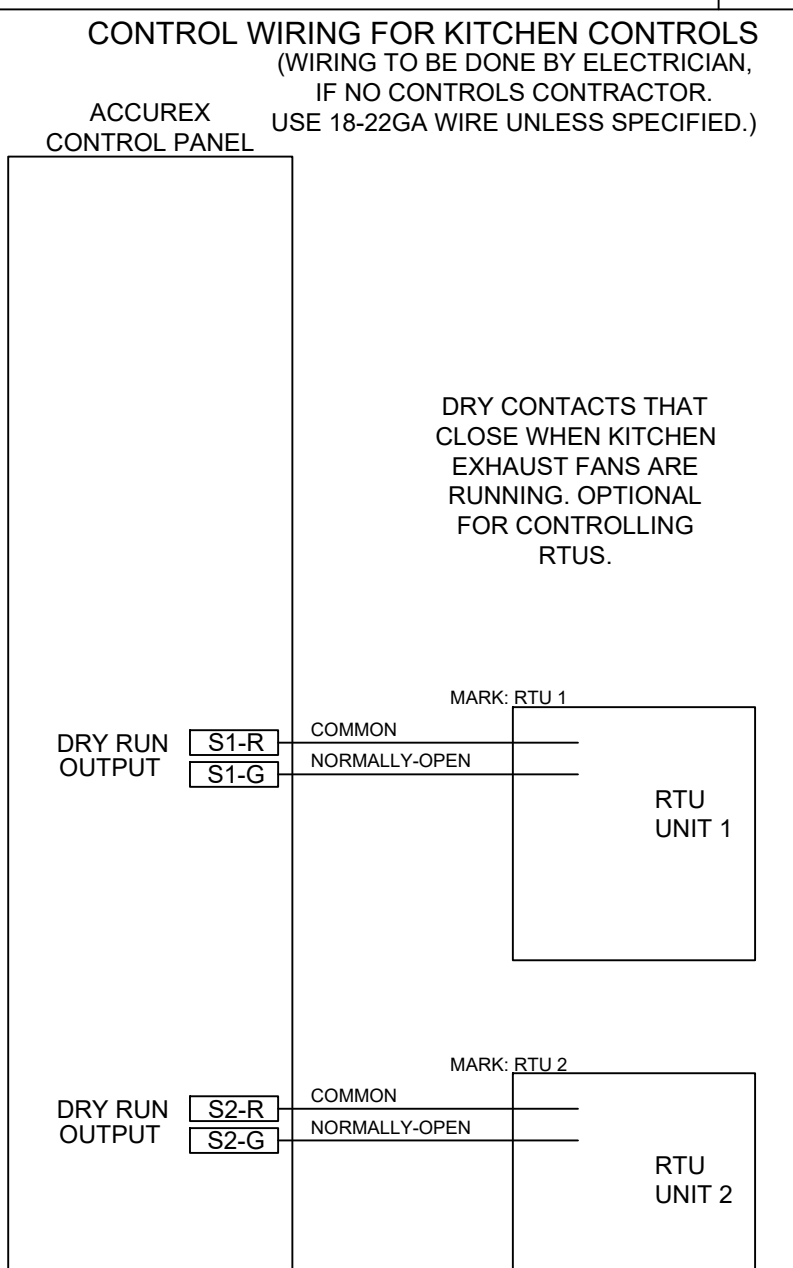
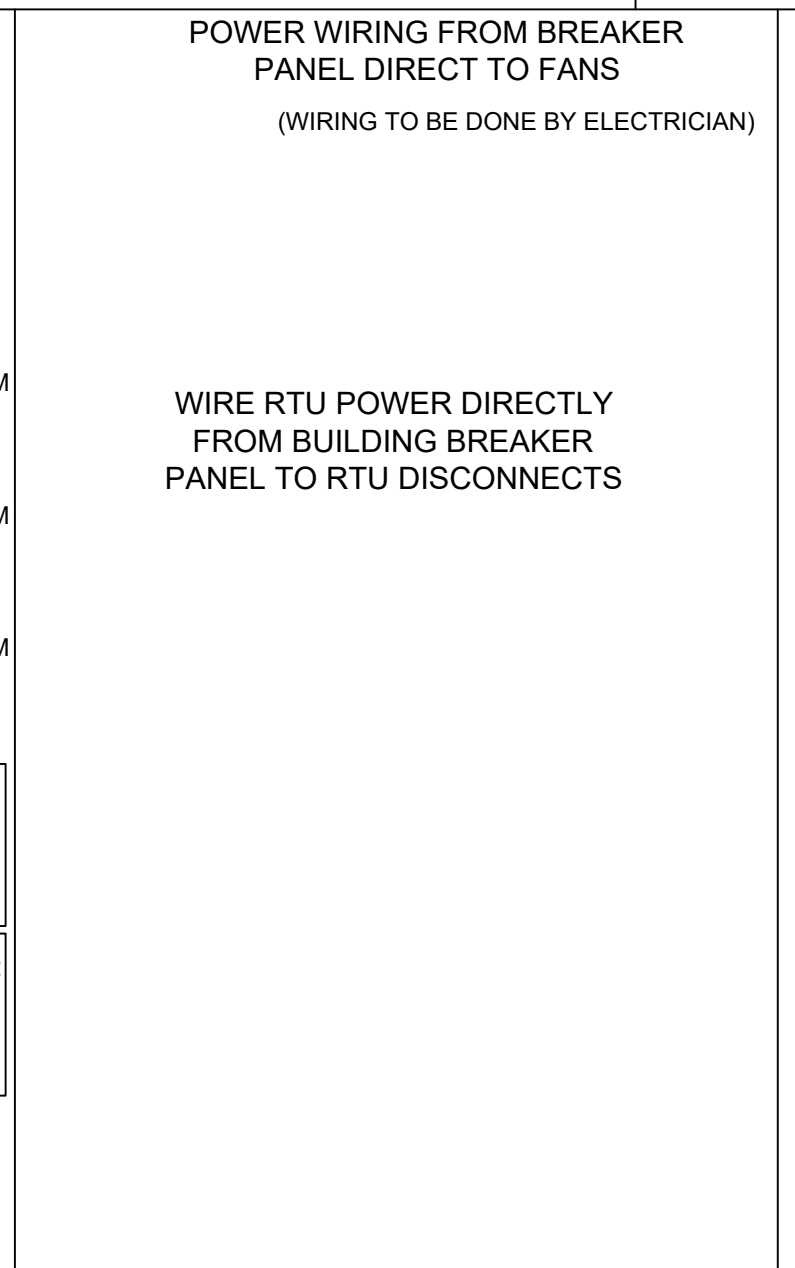
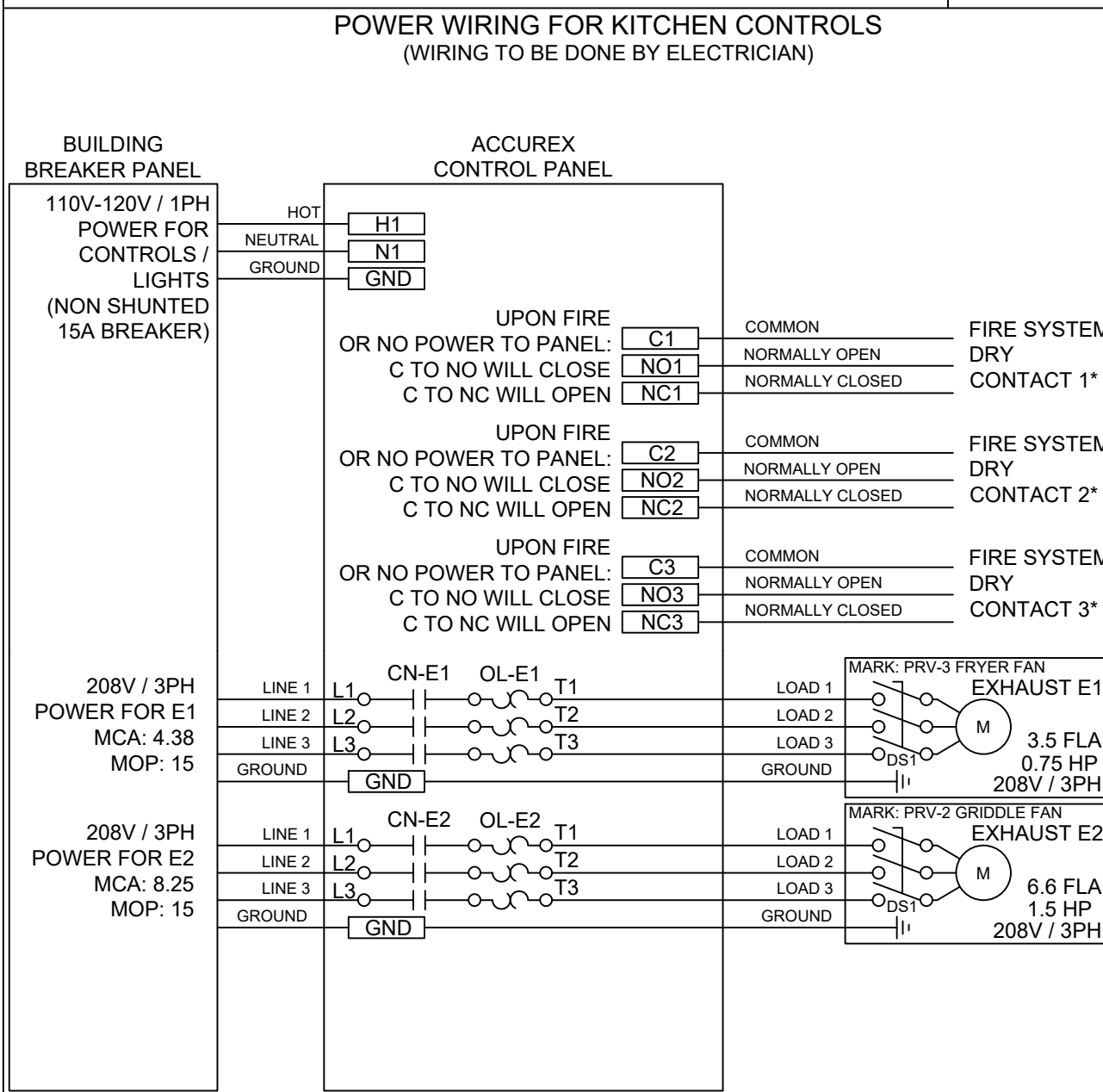
PRG VERSION: V2.00
FIELD WIRED
FACTORY SUPPLIED AND WIRED

WIRING DIAGRAM CODE:

JOB NAME:
CULVERS-METRO L NEW CONTROLS

MODEL: XKC-CV-S-21-2-1-0

SERIAL NUMBER:



EQUIPMENT SCHEDULE												
Ceiling Exhaust Fan												
City	Accurex Model	Volume (CFM)	SP (in wg)	FRPM	Operating Power (hp)	Weight (Lb.)	Size (hp)	V/CP	Encr.	Motor RPM	Windings	FLA
	XCR-B80	75	0.125	855	0.01	10	0.0	11560/1	OP	900	1	NA

FOR TECHNICAL SUPPORT ON ACCUREX CONTROLS PLEASE CALL ACCUREX TECHNICAL SUPPORT: 1-800-371-6858

SECONDARY CONTACTS ARE: AARON VAN KREY 715.841.8521 TYLER SCHILLING 715.841.8749

Thank you for your interest in Accurex

SUBMITTAL

Please return one approved print to your Greenheck Representative including signature, date, and answers to all submittal "verify" notes and questions. Fabrication will not begin until after approved drawings are received.

APPROVED AS SUBMITTED
 APPROVED AS NOTED
 REJECTED - REVISE AND RESUBMIT

SIGNATURE _____ DATE _____

REV	DESCRIPTION	DATE

ACCUREX

CULVER'S MASTER TEMPLATE

SCALE: 1/24

C28805C

VENTILATION SYSTEM NOTES

Greenheck ventilators are designed in compliance with all national codes: NFPA # 96, national electric code, BOCA, uniform mechanical code, international mechanical code, and southern building conference. See national evaluation report #436 for allowable values, and/or conditions of use concerning material presented in this document. Local codes may vary. It is the responsibility of the purchaser to submit drawings to local authorities.

Exhaust and supply air volumes are to be maintained within -5% to +10% tolerance of values indicated. Static pressure(s) indicated are for the ventilator at the duct connection(s) only.

The grease filter face velocities are based on the filter manufacturers recommendations for maximum grease extraction. Inlet opening air velocities for waterwash, dry cartridge and high velocity cartridge filters manufactured by Greenheck are designed to deliver maximum grease extraction.

Hoods installation (by others unless otherwise noted) shall be in accordance with NFPA # 96 and applicable building codes.

PROPRIETARY INFORMATION NOTICE

This document is and contains confidential trade secret information of the company and remains property of the company and is to be returned upon request. Neither it nor information is contained may be reproduced or disclosed to persons not having a need-to-know consistent with the purpose of the loan document without written permission.

© 2022

NEW CULVER'S RESTAURANT
1001 Connexion Way
Columbia City, IN 46725
County of WHITLEY

OWNER: SUNBUNNY HOLDINGS, LLC
41 EMS D3 Lane
Syracuse, IN 46567
Steve Leuter

OWNER: OLLMANN ASSOCIATES ARCHITECTS, P.C.
200 South State Street
Belleville, Illinois 61008
815-544-7790 Phone

FAN SCHEDULE & DETAILS

2021-143

M204

Revision: _____
Date: 4-1-2022

CONSTRUCTION SET 5-16-2022