

Report By:

**National TAB
1329 E. KEMPER ROAD
SUITE 4210
CINCINNATI, OH 45246**

NATIONAL

TAB

Comfort. Under control.

**Report: TAB REPORT
Function: Test, Adjust, & Balance
Date: 04/18/2023**

**PROJECT
04-17-23 NIKE CLEARANCE -
SACRAMENTO, CA**

2100 ARDEN WAY
SACRAMENTO, CA 95825

Client

Alliance Retail Construction Inc.
5952 Clark Center Ace
Sarasota, FL 34238

National TAB

Project: 04-17-23 NIKE CLEARANCE - SACRAMENTO, CA

Table Of Contents

Section	Page #
Summary	3
Balance Schedule	4
Site Pictures	5
Checklist Data	8
AHU/RTU	10
VAV - Single Duct	18
FAN - Exhaust	19
FAN - Supply	21
GRD Layout	22

Project Summary

The summary below provides a quick understanding of our scope of work and general testing procedures. Enclosed in the report is further detail about your building performance including recommendations, asset data, and pictures. Our focus is to work with the trades to remedy any issues or deficiencies during the actual field balancing and not after the balancing has occurred to achieve a positive environment and outcome. The level of success is determined by the availability of the trades, possible parts needed, or time constraints.

FCU's w/ Diffusers

Each of the FCU's were measured at their terminal devices utilizing a flow hood. The sum of these readings is equal to the total flow for that particular unit. The total flow of each FCU was then adjusted to within tolerance of the specified design. Each terminal diffuser was balanced to within tolerance of the engineer's design volume utilizing the provided hand damper located at the takeoff of the main & branch trunk line(s). Any equipment that fell outside of this tolerance is noted throughout the report.

Variable Air Volume (VAV) Terminals

The VAV's were calibrated in a call for max cooling and the correction factors are reported on the individual asset. While in a call for full cooling, the individual air devices were then balanced within design tolerance. The VAVs were then stroked to minimum cool and the airflow values reported. The VAV was then stroked to heating and the airflow values reported. It was verified that there was a sufficient temp rise on each VAV.

Outside Air Fan

The OAF provides ventilation air to HVAC units throughout the space. All equipment on the duct system was first turned on in a full fan speed condition. The total airflow was measured via traverse and then adjustment was made to bring the total flow within design tolerance. The individual branches to each unit were then traversed and balanced until they were within design tolerances. Once balancing was completed, the overrides were released

General Exhaust Fans

The general exhaust fans were measured by reading each air device with a flow hood. The total airflow for each fan is equivalent to the sum of these readings. Fan speed was then adjusted so that the airflow was within tolerance of design. Each terminal device was balanced to within tolerance of the design volume using the installed volume dampers. Any equipment that fell outside of this tolerance is noted throughout the report.

Final Building Tests

After completing the test and balance the final building pressure was measured. It was confirmed that the building pressure fell within acceptable tolerances of $-0.02''$ wc to $+0.02''$ wc and that the pressure measurement coincides with the actual and design net airflow. Any deviations from these standards are noted throughout the report.

AIR BALANCE SCHEDULE

UNIT	AREA SERVED	HVAC SUPPLY		HVAC RETURN		HVAC OUTDOOR		OA %		HOOD MAKE-UP		HOOD EXHAUST		GENERAL EXH.	
		DESIGN	ACTUAL	DESIGN	ACTUAL	DESIGN	ACTUAL	DESIGN	ACTUAL	DESIGN	ACTUAL	DESIGN	ACTUAL	DESIGN	ACTUAL
VRF-1	OFFICE/FITTING	1200	1168	1030	991	170	177	14.2%	15.2%						
VRF-12	STOCK	750	812	120	171	630	641	84.0%	78.9%						
VRF-13	STOCK	1300	1401	300	419	1000	982	76.9%	70.1%						
VRF-14	STOCK	1300	1425	300	402	1000	1023	76.9%	71.8%						
EF-1	RESTROOMS													275	254
TOTALS		4550	4806	1750	1983	2800	2823			0	0	0	0	275	254

NET BUILDING AIRFLOW CALCULATION

TOTALS	DESIGN	ACTUAL
TOTAL OA	2800	2823
TOTAL EXHAUST	275	254
NET AIRFLOW	2525	2569

DOOR TESTED	BUILDING PRESSURE MEASUREMENTS (IN. H2O)
FRONT	0.0189
SIDE	-
REAR	0.0157
AVERAGE	0.0173

FINAL CHECKS

- ACTUAL NET AIRFLOW COINCIDES WITH DESIGN: ✔

- MEASURED PRESSURES COINCIDES WITH ACTUAL NET AIRFLOW: ✔

- PRESSURE FALLS WITHIN IMC TOLERANCE OF +/-0.02" W.C. ✔

NOTES:



Comfort. Under control.

04-17-23 NIKE CLEARANCE - SACRAMENTO, CA

CheckList Information

Name : TECH - SITE PICTURES **Status :** NotSubmitted
Assigned Organization : National TAB **Asset :**
Requesting Organization : National TAB

CheckList Item Details

STORE FRONT



20230414_111259.jpg

VRF-1



20230418_093101.jpg

VRF-12



20230414_111154.jpg

VRF-13



20230414_111159.jpg

VRF-14



20230414_111216.jpg

EF-1



20230414_111123.jpg

SF-1



20230414_111120.jpg

Notes/Comments :



Comfort. Under control.

04-17-23 NIKE CLEARANCE - SACRAMENTO, CA

CheckList Information

Name : TECH - STEP 1: INITIAL WALKTHROUGH **Status :** NotSubmitted
Assigned Organization : National TAB **Asset :**
Requesting Organization : National TAB

CheckList Item Details

INITIAL SITE WALKTHROUGH

Review Plan Review Checklist, has it been signed off and meets our standards to start balancing? If not contact processor to ensure job is ready.	YES
All diffusers and grilles are installed and match design?	YES
Thermostats have power?	YES
All HVAC units and fans and powered and operational?	YES
VAV diffusers (if applicable) are powered and responding to adjustment at thermostat?	YES
Have trades/general contractor been notified about any issues and are they created on FaciliBuild?	YES

Notes/Comments :



Comfort. Under control.

04-17-23 NIKE CLEARANCE - SACRAMENTO, CA

CheckList Information

Name : TECH - STEP 2: UNIT DATA AND EVAL **Status :** NotSubmitted

Assigned Organization : National TAB **Asset :**

Requesting Organization : National TAB

CheckList Item Details

UNIT DATA AND EVALUATION WHILE GATHERING UNIT DATA CHECK THE FOLLOWING:

RTU's/AHU's

Economizers are assembled and functional?	YES
Motors are all operating below the FLA rating?	YES
Are belts tight?	N/A
If direct drive unit is the speed controller working.	N/A
Is gas piping installed and valves turned on?	N/A
Unit free of noticeable noise and vibration	YES

EF's

Rotation is correct?	YES
Belts are tight?	N/A
Grease cup installed on hood fan	N/A
Hinge kit installed installed on hood fan?	N/A
Lean fan back. Is grease duct installation adequate and is duct ran all the way to the base of the fan?	N/A
Flex conduit is long enough so that fan can be completely tilted back?	N/A
There is no major leakage around base of fan?	N/A
Is the motor operating below the motor FLA rating?	YES

For restroom fan(s) is the back draft damper installed and can it fully open? YES

Unit free of noticeable noise and vibration? YES

DOCUMENTATION

Have trades/general contractor been notified about any issues and are they created on FaciliBuild? YES

Notes/Comments :



Comfort. Under control.

04-17-23 NIKE CLEARANCE - SACRAMENTO, CA

CheckList Information

Name : TECH - STEP 3: TEST, ADJUST AND BALANCE **Status :** NotSubmitted
Assigned Organization : National TAB **Asset :**
Requesting Organization : National TAB

CheckList Item Details

TEST, ADJUST, AND BALANCE ALL EQUIPMENT:

DURING TESTING MAKE NOTE OF THE FOLLOWING:

Is space free of drafting?	YES
Is space comfortable in all areas?	YES
Is the space free of ventilation noise?	YES
If deviations from design were necessary to resolve 1-3 what were they? Otherwise put "NA".	N/A

FABRIC DUCT STATIC PRESSURES (IF APPLICABLE)

Take static pressures near takeoff for each fabric duct once balancing is completed. Input this into the "VEL (1)" field on the diffuser asset. If not a fabric duct then, put "N/A" into the "VEL (1)" field instead.	N/A
--	-----

Notes/Comments :



Comfort. Under control.

04-17-23 NIKE CLEARANCE - SACRAMENTO, CA

CheckList Information

Name :	TECH - STEP 4: FINAL TESTS	Status :	NotSubmitted
Assigned Organization :	National TAB	Asset :	
Requesting Organization :	National TAB		

CheckList Item Details

FINAL TESTS

BUILDING PRESSURE

Building pressure at front & back doors (All Systems On)	0.0173"
Do actual net building airflow, design net building airflow, and pressure coincide? If not why? (All three should either be positive or negative)	YES

CARRIER VFD PARAMETERS (IF APPLICABLE)

Use Carrier provided VFD cable to verify VFD speed parameters for each unit (Defaults - high speed = 60Hz, low speed = 40Hz). Can adjust high speed parameter for balancing but requires that the low speed is proportionally adjusted. Record VFD speeds on the individual assets	N/A
--	-----

TEMPERATURES/HUMIDITIES

Measure temperatures/humidities for outside air (taken in shade), return air, and supply air for each HVAC unit during full cooling and input into appropriate fields on the individual asset	YES
---	-----

VAV DIFFUSERS (IF APPLICABLE)

Each VAV-diffuser is calibrated for max airflow?	YES
Each VAV diffuser is set for minimum airflow? Record value in notes on the individual diffuser asset	YES

Notes/Comments :

National TAB

Project: 04-17-23 NIKE CLEARANCE - SACRAMENTO, CA

System/Unit: AHU/RTU



Comfort. Under control.

Asset: VRF1

AREA:OFFICE/ FITTING

Unit Data		
	Design	Actual
MFG	MITSUBISHI	MITSUBISHI
Serial Num	-	13W018417GEHB4
Model Num	TPEFY048MH	TPEFY072MH140A
Type	FCU	FCU
Configuration	VERTICAL	HORIZONTAL
Num OA Filters 1	-	N/A
OA Filter Size 1	-	N/A
Num Final Filter 1	-	2
Final Filter Size 1	-	20X24X2

Motor Data		
	Design	Actual
Motor MFG	-	NL
Frame	-	NL
Horsepower	-	NL
Motor Rpm	-	NL
Phase	1	1
Rated Voltage	208	208/230
Rated Amperage	-	7.7/6.6

Drive Data		
	Design	Actual
Motor Sheave Size	-	DD
Motor Bore Size	-	DD
Fan Sheave Size	-	DD
Fan Sheave Bore	-	DD
Belt CL Distance	-	DD
Num of Belts	-	DD
Belt Size	-	DD

Electrical		
	Design	Actual
VFD Min Setpt	-	N/A
VFD Max Setpt	-	N/A

Completed By: Zack Eismín

Notes:

Test Data		
	Design	Actual
SF CFM	1200	1168
SF RPM	-	NA
RA CFM	1030	991
OA CFM	170	177-431
RL Voltage	-	210
RL Amperage	-	5.3
SF Rotation	-	CCW
RA Damper Position	-	60%-80%
Min OA Damper Position	-	40%-20%
Min OA Damper Type	-	MOTORIZED

Performance Data		
	Design	Actual
MA Plenum SP	-	-0.17"
Fan Suction SP	-	-0.38"
Fan Discharge SP	-	0.31"
Total ESP	0.50"	0.48"
OA Temp (db/wb)	-	69.4/58.1
RA Temp (db/wb)	-	74.9/61.8

General		
	Design	Actual
Fan Rotation Correct	-	NA
Unit Filters Clean	-	YES

National TAB

Project:04-17-23 NIKE CLEARANCE - SACRAMENTO, CA

AHU/RTU



Comfort. Under control.

Diffuser Supply (GRD)

VRF1/OFFICE/ FITTING

Asset									
Asset Name	Location	Type	Size	DESIGN CFM	AK	CFM(1)	CFM(2)	FINAL CFM	% to design
SGRD1	ASM OFFICE	CSD1	8"	225	1	0	203	203	90.2
SGRD2	HC OFFICE	CSD1	8"	125	1	169	127	127	101.6
SGRD3	EMP. LOUNGE	CSD2	8"	175	1	311	192	192	109.7
SGRD4	EMP. LOUNGE	CSD2	8"	175	1	351	181	181	103.4
SGRD5	RESTROOM CORRIDOR	CSD3	6"	50	1	129	47	47	94.0
SGRD6	RESTROOM	CSD3	6"	50	1	104	49	49	98.0
SGRD7	RESTROOM	CSD3	6"	50	1	143	53	53	106.0
SGRD8	VAV 1			350	1	0	316	316	90.3

Completed By: Brianna Biggs on

National TAB

Project: 04-17-23 NIKE CLEARANCE - SACRAMENTO, CA

System/Unit: AHU/RTU



Comfort. Under control.

Asset: VRF12

AREA:STOCK

Unit Data		
	Design	Actual
MFG	mitsubishi	MITSUBISHI
Serial Num	-	1ZW000977GEHB1
Model Num	TPEFY048MH	TPEFY048OA140A
Type	FCU	FCU
Configuration	VERTICAL	HORIZONTAL
Num OA Filters 1	-	N/A
OA Filter Size 1	-	N/A
Num Final Filter 1	-	2
Final Filter Size 1	-	16X24X2

Motor Data		
	Design	Actual
Motor MFG	-	NL
Frame	-	NL
Horsepower	-	NL
Motor Rpm	-	NL
Phase	1	1
Rated Voltage	208	208/230
Rated Amperage	-	NL

Drive Data		
	Design	Actual
Motor Sheave Size	-	DD
Motor Bore Size	-	DD
Fan Sheave Size	-	DD
Fan Sheave Bore	-	DD
Belt CL Distance	-	DD
Num of Belts	-	DD
Belt Size	-	DD

Electrical		
	Design	Actual
VFD Min Setpt	-	N/A
VFD Max Setpt	-	N/A

Test Data		
	Design	Actual
SF CFM	750	812
SF RPM	-	NA
RA CFM	120	171
OA CFM	630	641-812
RL Voltage	-	210
RL Amperage	-	2.2
SF Rotation	-	CCW
RA Damper Position	-	15%-0%
Min OA Damper Position	-	85%-100%
Min OA Damper Type	-	MOTORIZED

Performance Data		
	Design	Actual
MA Plenum SP	-	-0.12"
Fan Suction SP	-	-0.33"
Fan Discharge SP	-	0.27"
Total ESP	0.55"	0.39"
OA Temp (db/wb)	-	69.4/58.1
RA Temp (db/wb)	-	74.9/61.8

General		
	Design	Actual
Fan Rotation Correct	-	NA
Unit Filters Clean	-	YES

Completed By: Zack Eismín

Notes:

National TAB

Project:04-17-23 NIKE CLEARANCE - SACRAMENTO, CA

AHU/RTU



Comfort. Under control.

Diffuser Supply (GRD)

VRF12/STOCK

Asset									
Asset Name	Location	Type	Size	DESIGN CFM	AK	CFM(1)	CFM(2)	FINAL CFM	% to design
SGRD1	STOCKROOM	DSG1	8X6	150	1	145	164	164	109.3
SGRD2	STOCKROOM	DSG1	8X6	150	1	178	162	162	108.0
SGRD3	STOCKROOM	DSG1	8X6	150	1	168	159	159	106.0
SGRD4	STOCKROOM	DSG1	8X6	150	1	142	163	163	108.7
SGRD5	STOCKROOM	DSG1	8X6	150	1	221	164	164	109.3

Completed By: Brianna Biggs on

National TAB

Project: 04-17-23 NIKE CLEARANCE - SACRAMENTO, CA

System/Unit: AHU/RTU



Comfort. Under control.

Asset: VRF13

AREA:STOCK

Unit Data		
	Design	Actual
MFG	mitsubishi	MITSUBISHI
Serial Num	-	19W000837GEHB3
Model Num	TPEFY096A0	TPEFY096OA140A
Type	FCU	FCU
Configuration	VERTICAL	HORIZONTAL
Num OA Filters 1	-	N/A
OA Filter Size 1	-	N/A
Num Final Filter 1	-	2
Final Filter Size 1	-	20X24X2

Motor Data		
	Design	Actual
Motor MFG	-	NL
Frame	-	NL
Horsepower	-	NL
Motor Rpm	-	NL
Phase	1	1
Rated Voltage	208	208/230
Rated Amperage	-	NL

Drive Data		
	Design	Actual
Motor Sheave Size	-	DD
Motor Bore Size	-	DD
Fan Sheave Size	-	DD
Fan Sheave Bore	-	DD
Belt CL Distance	-	DD
Num of Belts	-	DD
Belt Size	-	DD

Electrical		
	Design	Actual
VFD Min Setpt	-	N/A
VFD Max Setpt	-	N/A

Test Data		
	Design	Actual
SF CFM	1300	1401
SF RPM	-	NA
RA CFM	300	419
OA CFM	1000	982-1401
RL Voltage	-	209
RL Amperage	-	2.9
SF Rotation	-	CCW
RA Damper Position	-	20%-0%
Min OA Damper Position	-	80%-100%
Min OA Damper Type	-	MOTORIZED

Performance Data		
	Design	Actual
MA Plenum SP	-	-0.12"
Fan Suction SP	-	-0.34"
Fan Discharge SP	-	0.23"
Total ESP	0.6"	0.35"
OA Temp (db/wb)	-	69.4/58.6
RA Temp (db/wb)	-	74.9/61.8

General		
	Design	Actual
Fan Rotation Correct	-	NA
Unit Filters Clean	-	YES

Completed By: Zack Eismín

Notes:

National TAB

Project:04-17-23 NIKE CLEARANCE - SACRAMENTO, CA

AHU/RTU



Comfort. Under control.

Diffuser Supply (GRD)

VRF13/STOCK

Asset									
Asset Name	Location	Type	Size	DESIGN CFM	AK	CFM(1)	CFM(2)	FINAL CFM	% to design
SGRD1	SALES	DSG1	10X6	185	1	97	201	201	108.6
SGRD2	SALES	DSG1	10X6	185	1	131	199	199	107.6
SGRD3	SALES	DSG1	10X6	185	1	127	198	198	107.0
SGRD4	SALES	DSG1	10X6	185	1	102	195	195	105.4
SGRD5	SALES	DSG1	10X6	185	1	202	200	200	108.1
SGRD6	SALES	DSG1	10X6	185	1	321	201	201	108.6
SGRD7	SALES	DSG1	10X6	190	1	479	207	207	108.9

Completed By: Brianna Biggs on

National TAB

Project: 04-17-23 NIKE CLEARANCE - SACRAMENTO, CA

System/Unit: AHU/RTU



Comfort. Under control.

Asset: VRF14

AREA:STOCK

Unit Data		
	Design	Actual
MFG	MITSUBISHI	MITSUBISHI
Serial Num	-	19W000847GEHB3
Model Num	TPEFY096A0	TPEFY096OA140A
Type	FCU	FCU
Configuration	VERTICAL	HORIZONTAL
Num OA Filters 1	-	N/A
OA Filter Size 1	-	N/A
Num Final Filter 1	-	2
Final Filter Size 1	-	20X24X2

Motor Data		
	Design	Actual
Motor MFG	-	NL
Frame	-	NL
Horsepower	-	NL
Motor Rpm	-	NL
Phase	1	1
Rated Voltage	208	208/230
Rated Amperage	-	NL

Drive Data		
	Design	Actual
Motor Sheave Size	-	DD
Motor Bore Size	-	DD
Fan Sheave Size	-	DD
Fan Sheave Bore	-	DD
Belt CL Distance	-	DD
Num of Belts	-	DD
Belt Size	-	DD

Electrical		
	Design	Actual
VFD Min Setpt	-	N/A
VFD Max Setpt	-	N/A

Test Data		
	Design	Actual
SF CFM	1300	1425
SF RPM	-	NA
RA CFM	300	402
OA CFM	1000	1023-1425
RL Voltage	-	210
RL Amperage	-	3.1
SF Rotation	-	CCW
RA Damper Position	-	20%-0%
Min OA Damper Position	-	80%-100%
Min OA Damper Type	-	MOTORIZED

Performance Data		
	Design	Actual
MA Plenum SP	-	-0.085"
Fan Suction SP	-	-0.24"
Fan Discharge SP	-	0.31"
Total ESP	0.6"	0.395"
OA Temp (db/wb)	-	69.4/58.6
RA Temp (db/wb)	-	74.9/61.8

General		
	Design	Actual
Fan Rotation Correct	-	NA
Unit Filters Clean	-	YES

Completed By: Zack Eismin

Notes:

National TAB

Project:04-17-23 NIKE CLEARANCE - SACRAMENTO, CA

AHU/RTU



Comfort. Under control.

Diffuser Supply (GRD)

VRF14/STOCK

Asset									
Asset Name	Location	Type	Size	DESIGN CFM	AK	CFM(1)	CFM(2)	FINAL CFM	% to design
SGRD1	SALES	DSG1	10X6	185	1	121	202	202	109.2
SGRD2	SALES	DSG1	10X6	185	1	153	203	203	109.7
SGRD3	SALES	DSG1	10X6	185	1	191	201	201	108.6
SGRD4	SALES	DSG1	10X6	180	1	123	195	195	108.3
SGRD5	SALES	DSG1	10X6	180	1	237	197	197	109.4
SGRD6	SALES	DSG1	10X6	180	1	342	192	192	106.7
SGRD7	SALES	DSG1	10X6	180	1	201	195	195	108.3
SGRD8	FOH STORAGE	WSG1	6X6	25	1	97	27	27	108.0

Completed By: Brianna Biggs on

National TAB

Project:04-17-23 NIKE CLEARANCE - SACRAMENTO, CA



Comfort. Under control.

VAV - Single Duct

HVAC EQUIPMENT/

Asset									
Asset Name	Type	Inlet Size	Design Max CFM	Max CFM	Design Min CFM	Min CFM	Design Heat CFM	Heat CFM	Ak (max)
VAV1	SINGLE	8"	350	316	105	101	NA	NA	NA

National TAB

Project: 04-17-23 NIKE CLEARANCE - SACRAMENTO, CA

System/Unit: FAN - Exhaust



Comfort. Under control.

Asset: EF1

AREA:RESTROOMS

Unit Data		
	Design	Actual
MFG	GREENHECK	GREENHECK
Model Num	SQ-080-VG	SQ-080-VG-X
Serial Num	-	21818307
Type	INLINE	INLINE
Configuration	HORIZONTAL	HORIZONTAL

Motor Data		
	Design	Actual
Motor MFG	-	NA
Frame	-	NA
Horsepower	1/10	NA
Motor Rpm	-	NA
Phase	1	NA
Voltage (rated)	120	NA
Amperage (rated)	-	NA
Service Factor	-	NA

Test Data		
	Design	Actual
CFM	275	254
Fan RPM	1684	NA
Fan Rotation	-	CCW
Motor RPM	-	NA
System SetPt	-	ON
RL Voltage	-	NA
RL Amperage	-	NA
Total ESP	0.5"	0.29"
Fan Inlet SP	-	-0.13"
Fan Discharge SP	-	0.16"

Completed By: Zack Eismin

Notes:

National TAB

Project:04-17-23 NIKE CLEARANCE - SACRAMENTO, CA

FAN - Exhaust



Comfort. Under control.

Diffuser Ret/Exh (GRD)

EF1/RESTROOMS

Asset									
Asset Name	Location	Type	Size	DESIGN CFM	AK	CFM(1)	CFM(2)	FINAL CFM	% to design
EGRD1	JANITORS CLOSET	CEG1	6"	75	1	69	69	69	92.0
EGRD2	RESTROOM	CEG1	8"	100	1	94	94	94	94.0
EGRD3	RESTROOM	CEG1	8"	100	1	91	91	91	91.0

Completed By: Brianna Biggs on

National TAB

Project: 04-17-23 NIKE CLEARANCE - SACRAMENTO, CA

System/Unit: FAN - Supply



Comfort. Under control.

Asset: SF1

AREA:VRF-1

Unit Data		
	Design	Actual
MFG	GREENHECK	GREENHECK
Model Num	SQ-90-VG	SQ-90-VG
Serial Num	-	21818310
Type	INLINE	INLINE
Configuration	HORIZONTAL	HORIZONTAL

Motor Data		
	Design	Actual
Motor MFG	-	NA
Frame	-	NA
Horsepower	1/10	NA
Motor Rpm	-	NA
Phase	1	NA
Voltage (rated)	120	NA
Amperage (rated)	-	NA
Service Factor	-	NA

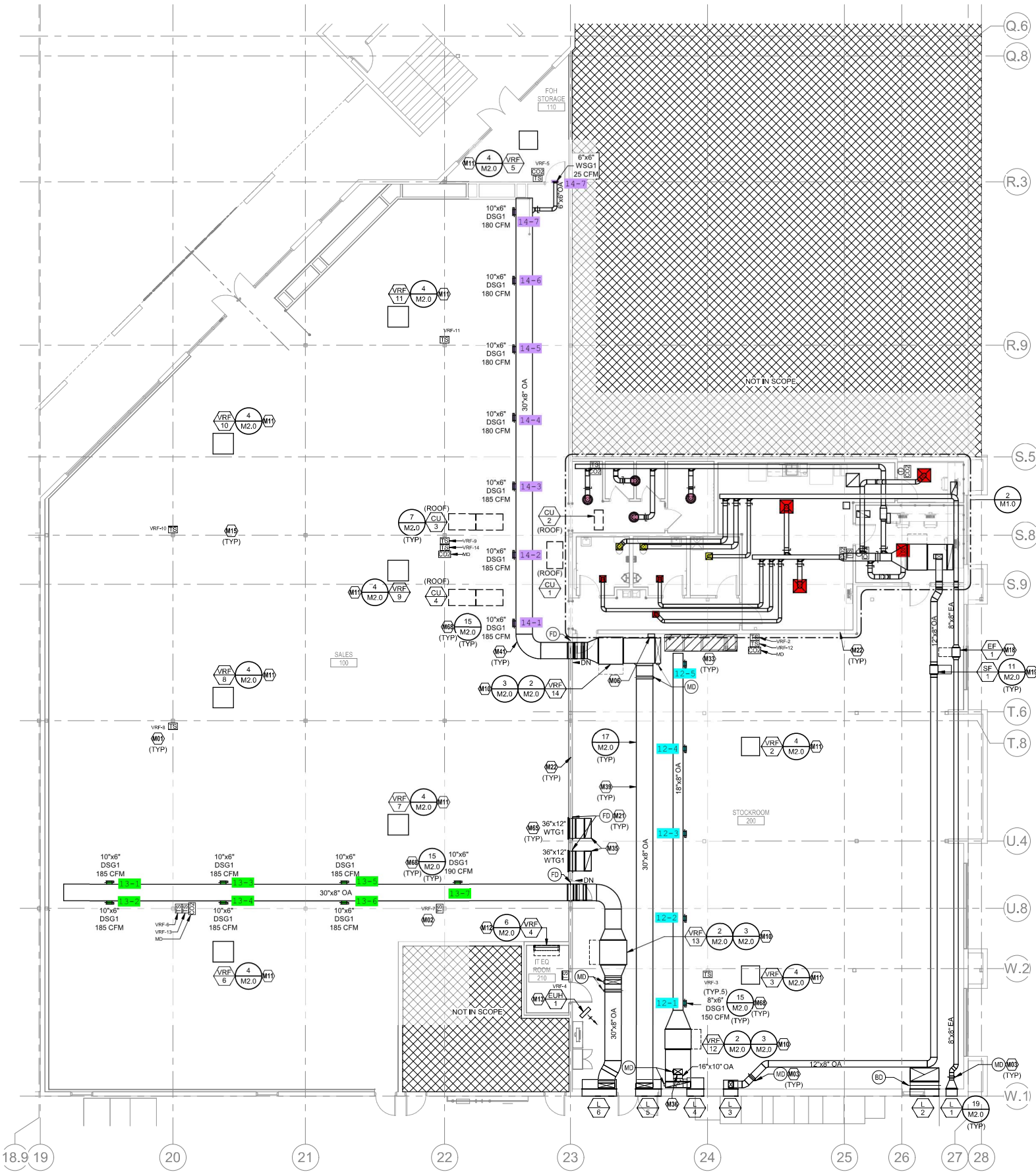
Gas Heat		
	Design	Actual

Test Data		
	Design	Actual
CFM	435	431-177
SF RPM	1668	NA
Motor RPM	-	NA
SF System SetPt	-	ON
RL Voltage	-	NA
RL Amperage	-	NA
Total ESP	-	0.12"
Fan Discharge SP	-	0.12"

General		
	Design	Actual
Fan Rotation Correct	-	YES

Completed By: Zack Eismin

Notes:



① HVAC PLAN
1/8" = 1'-0"