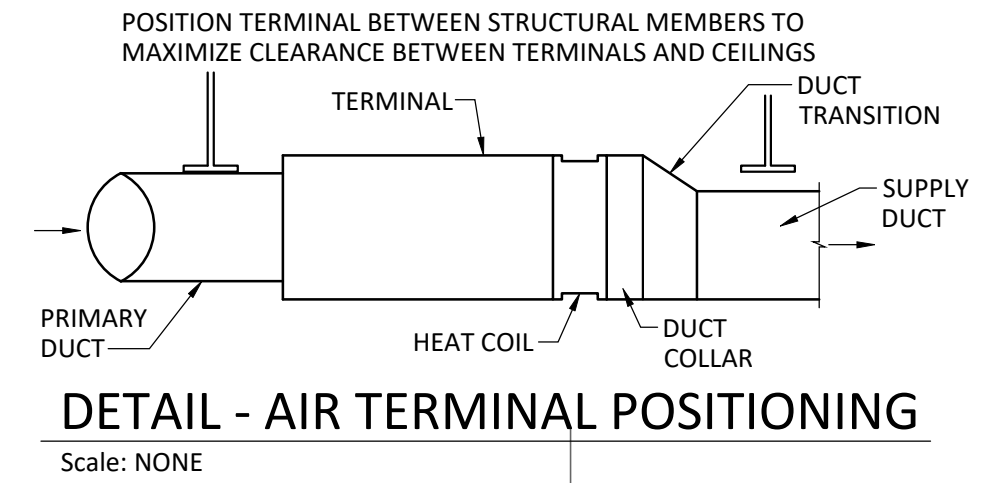


HVAC KEYED NOTES

1. PROVIDE INSULATED SUPPLY MAIN DUCTS AND RETURN MAIN DUCTS FROM THE UNITS ON THE ROOF TO FLOOR BELOW. REFER TO SHEET M1.2 FOR CONTINUATION.
2. PROVIDE INSULATED SUPPLY MAIN DUCTS AND RETURN MAIN DUCTS FROM THE UNITS ON THE ROOF TO SERVE AREAS OF THIS FLOOR. PROVIDE INTERNAL ACUSTICAL LINING FOR RETURN DUCTWORK.
3. PROVIDE OPEN ENDED RETURN TO DRAW SPACE RETURN AIR FROM THE CEILING PLENUM SPACE. ACUSTICAL LINING SHALL BE CONTINUED TO THE OPENING.
4. SUPPLY DUCTWORK EXPOSED TO VIEW TO BE ROUND OR FLAT OVAL DUCTWORK AS INDICATED, DOUBLE WALL WITH INTERSTITIAL INSULATION, PROVIDED WITH PAINT GRIP FINISH FOR FINAL PAINTING BY GENERAL TRADES.
5. PROVIDE SERIES FAN POWERED AIR TERMINAL TO SERVE SPACES WITH PERIMETER EXPOSURE, INCLUDING HOT WATER REHEAT COIL. CAREFULLY POSITION TO ALLOW ACCESS FOR REGULAR MAINTENANCE AND SERVICING.
6. PROVIDE VARIABLE AIR VOLUME BOX WITH HOT WATER REHEAT COIL TO SERVE INTERIOR SPACES. CAREFULLY POSITION TO ACCOMMODATE ACCESS FOR SERVICING.
7. EXISTING EXHAUST FOR RESTROOMS TO REMAIN, REFER TO SHEET M1.3 FOR FAN REPLACEMENT. BALANCE TO AIR FLOW RATES SHOWN.
8. PROVIDE LASER EXHAUST DISCHARGE DUCTWORK FROM FLOOR BELOW TO DISCHARGE ON ROOF ABOVE, REFER TO SHEETS M1.1 AND M1.3 FOR CONTINUATION.
9. PROVIDE TOILET EXHAUST FROM FLOOR BELOW TO EXHAUST FAN ON ROOF ABOVE, REFER TO SHEETS M1.1 AND M1.3 FOR CONTINUATION.
10. PROVIDE RELIEF AIR DUCT FROM FLOOR BELOW TO RELIEF FAN ON ROOF ABOVE, REFER TO SHEETS M1.1 AND M1.3 FOR CONTINUATION.
11. PROVIDE SIDEWALL TRANSFER AIR OPENING TO THE CEILING PLENUM ABOVE THE CORRIDOR.
12. LOCATE NEW SUPPLY AND RETURN VERTICAL MAIN DUCTS AWAY FROM WALL SLIGHTLY (WESTWARD) TO AVOID CONDUITS IN CEILING OF FLOOR BELOW (PHASE 2); FIELD VERIFY DIMENSIONS.
13. TITUS TMSA-AA, 24 X 24 FACE, BORDER 3 SURFACE MOUNT FRAME KIT, SCREWDRIVER OPERATED OPPOSED BLADE DAMPER BEHIND CONES, WITH EG GRID.

LEGEND

- (#)Ø ROUND DUCT
- FLAT OVAL DUCT
- HD HAND DAMPER
- ⊕ SPACE SENSOR

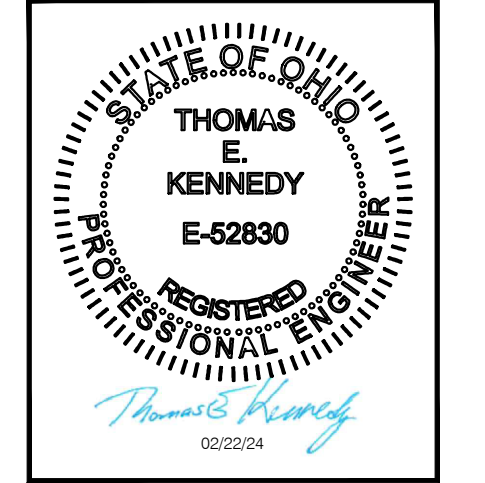


A FIRST FLOOR HVAC - NEW DUCTWORK PLAN

Scale: 1/8" = 1'-0" 0 2 4 8 16'



4K ARCHITECTURE + DESIGN
 555 East Street
 Cincinnati, Ohio 45203
 Tel: (513) 455-5000
 Fax: (513) 455-5008
 Website: www.4karchitecture.com
 Email: info@4karchitecture.com



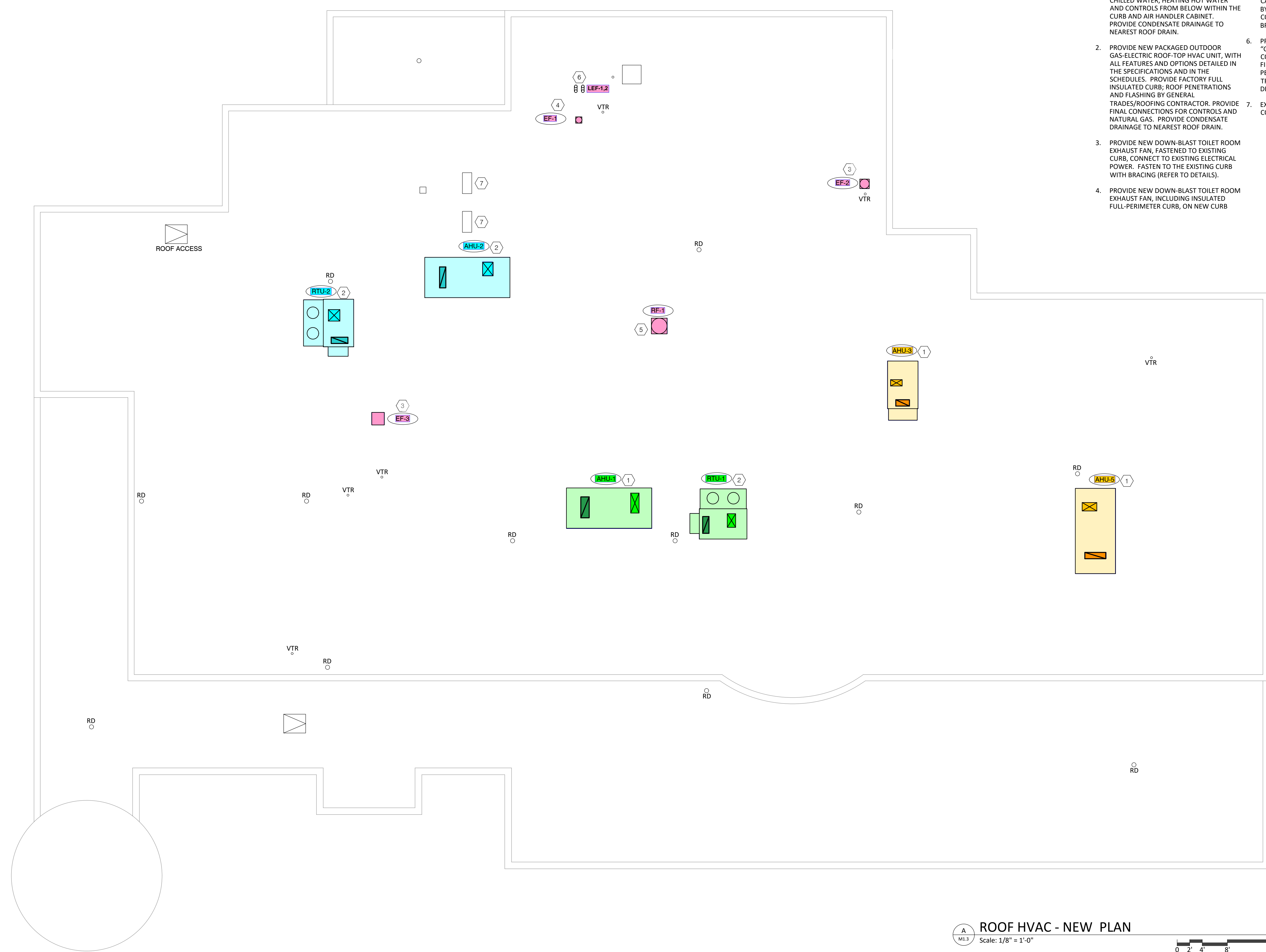
COMPLETE RENOVATION/MECHANICAL UPGRADES:
Greene County Public Library
 XENA COMMUNITY LIBRARY
 76 EAST MARKET STREET
 XENA, OH 45385

NO.	DESCRIPTION	DATE
1	ISSUED FOR CONSTRUCTION	10/06/23
2	BULLETIN 11	02/22/24
3	BULLETIN 15	08/01/24

SECOND FLOOR HVAC NEW DUCTWORK

Drawn By:
 Scale: AS NOTED
 Job No.: 22-2038

M1.2



- # NOTES
1. PROVIDE NEW PACKAGED OUTDOOR AIR HANDLING UNIT, WITH ALL FEATURES AND OPTIONS DETAILED IN THE SPECIFICATIONS AND IN THE SCHEDULES. PROVIDE FACTORY FULL INSULATED CURB; ROOF PENETRATIONS AND FLASHING BY GENERAL TRADES/ROOFING CONTRACTOR. PROVIDE FINAL CONNECTIONS FOR CHILLED WATER, HEATING HOT WATER AND CONTROLS FROM BELOW WITHIN THE CURB AND AIR HANDLER CABINET. PROVIDE CONDENSATE DRAINAGE TO NEAREST ROOF DRAIN.
 2. PROVIDE NEW PACKAGED OUTDOOR GAS-ELECTRIC ROOF-TOP HVAC UNIT, WITH ALL FEATURES AND OPTIONS DETAILED IN THE SPECIFICATIONS AND IN THE SCHEDULES. PROVIDE FACTORY FULL INSULATED CURB; ROOF PENETRATIONS AND FLASHING BY GENERAL TRADES/ROOFING CONTRACTOR. PROVIDE FINAL CONNECTIONS FOR CONTROLS AND NATURAL GAS. PROVIDE CONDENSATE DRAINAGE TO NEAREST ROOF DRAIN.
 3. PROVIDE NEW DOWN-BLAST TOILET ROOM EXHAUST FAN, FASTENED TO EXISTING CURB, CONNECT TO EXISTING ELECTRICAL POWER. FASTEN TO THE EXISTING CURB WITH BRACING (REFER TO DETAILS).
 4. PROVIDE NEW DOWN-BLAST TOILET ROOM EXHAUST FAN, INCLUDING INSULATED FULL-PERIMETER CURB, ON NEW CURB
 5. PROVIDE NEW DOWN-BLAST RELIEF AIR EXHAUST FAN, INCLUDING INSULATED FULL-PERIMETER CURB, ON NEW CURB CAP; PENETRATION AND ROOF FLASHING BY GENERAL TRADES/ROOFING CONTRACTOR. FASTEN TO CURB WITH BRACING (REFER TO DETAILS).
 6. PROVIDE EXHAUST DUCT DISCHARGE "GOOSENECKS", INCLUDING STORM COLLAR, FROM LASER EXHAUST FANS ON FIRST FLOOR, ON NEW CURB CAP; PENETRATION AND FLASHING BY GENERAL TRADES/ROOFING CONTRACTOR. REFER TO DETAIL.
 7. EXISTING IT SERVER ROOM AIR CONDITIONING UNIT TO REMAIN.

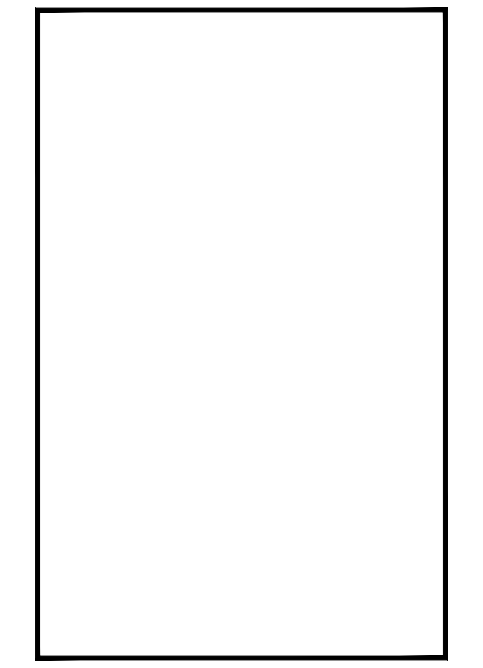
LEGEND
 RD ROOF DRAIN LOCATION
 VTR EXISTING VENT THROUGH ROOF

4K
ARCHITECTURE + DESIGN
 555 Gest Street
 Cincinnati, Ohio 45203
 Tel: (513) 455-5000
 Fax: (513) 455-6008
 Webpage: www.k4architecture.com
 Email: info@k4architecture.com

STATE OF OHIO
THOMAS E. KENNEDY
 E-52830
 REGISTERED PROFESSIONAL ENGINEER
Thomas E. Kennedy
 02/28/23

COMPLETE RENOVATION/MECHANICAL UPGRADES:
Greene County Public Library
 XENIA COMMUNITY LIBRARY
 76 EAST MARKET STREET
 XENIA, OH 45385

REVISIONS / SUBMISSIONS		
NO.	DESCRIPTION	DATE



ROOF HVAC NEW PLAN
 Drawn By: TK, BBJ, MW
 Scale: AS NOTED
 Job No.: 22-2038

M1.3

ROOF HVAC - NEW PLAN
 Scale: 1/8" = 1'-0"
 0 2' 4' 8' 16'