

**Report By:**

National TAB  
1329 E. KEMPER ROAD  
SUITE 4210  
CINCINNATI, OH 45246



**Report: TAB Report**  
**Function: Test, Adjust, & Balance**  
**Date: 11/24/2025**  
**Completed By: National TAB**

# PROJECT

**11-17-25 WHATABURGER #1665 PEARLAND,  
TX**

E BROADWAY ST & DIXIE FARM RD

PEARLAND, TX

## Client

Whataburger Restaurants  
300 Concord Plaza Dr  
  
San Antonio, TX 78216

# National TAB

Project: 11-17-25 WHATABURGER #1665 PEARLAND, TX

## Table Of Contents

<b>Section</b>	<b>Page #</b>
AHU/RTU	3
Diffuser Supply (GRD)	9
FAN - Exhaust	11
Kitchen Hood Type I	18

# National TAB

Project: 11-17-25 WHATABURGER #1665 PEARLAND, TX

System/Unit: AHU/RTU



Asset: RTU1

AREA: KITCHEN

Unit Data	
	Actual
MFG	AAON
Serial Num	202509-BNGP125762
Model Num	RNA-020-C-A-8-FAB04-CBK10
Num OA Filters 1	3
OA Filter Size 1	19.5X25
Num Final Filter 1	6
Final Filter Size 1	20X25X2

Motor Data		
	Design	Actual
Horsepower	3.00	3.0
Motor Rpm	-	1170
Phase	3	3
Rated Voltage	208	208
Rated Amperage	-	10.6

Drive Data	
	Actual
Motor Sheave Size	DIRECT DRIVE
Motor Bore Size	DIRECT DRIVE
Motor Sheave SetPt	DIRECT DRIVE
Fan Sheave Size	DIRECT DRIVE
Fan Sheave Bore	DIRECT DRIVE
Belt CL Distance	DIRECT DRIVE
Num of Belts	DIRECT DRIVE
Belt Size	DIRECT DRIVE
Belt Alignment	DIRECT DRIVE

Test Data		
	Design	Actual
SF CFM (Traverse)	-	[1]
SF CFM	3850	3880
SF RPM	928	DIRECT DRIVE
MOTOR RPM	-	DIRECT DRIVE
RA CFM (Traverse)	-	[1]
RA CFM	1390	1343
OA CFM	2460	2537
RL Voltage	-	189.1/189.2/189.2
RL Amperage	-	5.90/5.70/5.54
SF System SetPt	-	45Hz
RA Damper Position	-	MECHANICALLY LINKED
Min OA Damper Position	-	20%
Min OA Damper Type	-	OPPOSED BLADE

Performance Data		
	Design	Actual
MA Plenum SP	-	-0.46"
Fan Suction SP	-	-0.66"
Fan Discharge SP	-	0.30"
Total ESP	0.75"	0.76"
Fan Total SP	-	0.96"

General	
	Actual
Unit free of Damage	YES
Fan Rotation Correct	YES
Unit Filters Clean	YES
Condensate Drain Installed	YES

Completed By: Zack Osborne on 11/19/2025

Notes:

[1] NO SUITABLE LOCATION FOR RETURN OR SUPPLY TRAVERSE. ONLY POSSIBLE AREAS ARE EITHER INACCESSIBLE AND/OR WOULD BE TOO TURBULENT FOR A RELIABLE READING.

Written By: Zack Osborne on 11/21/2025

## Unit Data - PHOTO LOG



11/19/2025

# National TAB

Project: 11-17-25 WHATABURGER #1665 PEARLAND, TX

## AHU/RTU



### Diffuser Supply (GRD)

#### RTU1/KITCHEN

Asset									
Asset Name	Location	Type	Size	DESIGN CFM	AK	CFM(1)	CFM(2)	FINAL CFM	% to design
SGRD1	DRIVE-THRU	A5	10"	345		328	281	328	95.1
SGRD2	DRIVE-THRU	P1	8"	200		157	136	182	91.0
SGRD3	KITCHEN	A6	12"	450		477	407	447	99.3
SGRD4	KITCHEN	A6	12"	450		461	395	485	107.8
SGRD5	KITCHEN	A6	12"	450		555	471	445	98.9
SGRD6	KITCHEN	A6	12"	450		636	567	450	100.0
SGRD7	KITCHEN	A6	12"	450		561	486	469	104.2
SGRD8	KITCHEN	A3	6"	70		82	80	71	101.4
SGRD9	OFFICE	A3	6"	190		250	213	199	104.7
SGRD10	BOH	A5	10"	320		287	256	331	103.4
SGRD11	BOH	A5	10"	175		226	179	187	106.9
SGRD12	BOH	H10	12"	150		282	249	143	95.3
SGRD13	RESTROOM	B3	6"	75		117	104	71	94.7
SGRD14	RESTROOM	B3	6"	75		115	105	72	96.0
Total				3850		4534	3929	3880	100.78%

# National TAB

Project: 11-17-25 WHATABURGER #1665 PEARLAND, TX

System/Unit: AHU/RTU



Asset: RTU2

AREA:DINING

Unit Data	
	Actual
MFG	AAON
Serial Num	202509-ANGK125743
Model Num	RNA-013-B-A-8-FAB04-CB1K0
Num OA Filters 1	2
OA Filter Size 1	24.5X19.5
Num Final Filter 1	4
Final Filter Size 1	20X25X2

Motor Data		
	Design	Actual
Horsepower	2.00	2.0
Motor Rpm	-	1170
Phase	3	3
Rated Voltage	208	208
Rated Amperage	-	7.5

Drive Data	
	Actual
Motor Sheave Size	DIRECT DRIVE
Motor Bore Size	DIRECT DRIVE
Motor Sheave SetPt	DIRECT DRIVE
Fan Sheave Size	DIRECT DRIVE
Fan Sheave Bore	DIRECT DRIVE
Belt CL Distance	DIRECT DRIVE
Num of Belts	DIRECT DRIVE
Belt Size	DIRECT DRIVE
Belt Alignment	DIRECT DRIVE

Test Data		
	Design	Actual
SF CFM (Traverse)	-	2078
SF CFM	2050	2078
SF RPM	1184	DIRECT DRIVE
MOTOR RPM	-	DIRECT DRIVE
RA CFM (Traverse)	-	[1]
RA CFM	500	512
OA CFM	1550	1566
RL Voltage	-	168.4/168.3/168.3
RL Amperage	-	3.48/3.54/3.46
SF System SetPt	-	56Hz
RA Damper Position	-	MECHANICALLY LINKED
Min OA Damper Position	-	25%
Min OA Damper Type	-	OPPOSED BLADE

Performance Data		
	Design	Actual
MA Plenum SP	-	-0.24"
Fan Suction SP	-	-0.45"
Fan Discharge SP	-	0.22"
Total ESP	0.50"	0.46"
Fan Total SP	-	0.67"

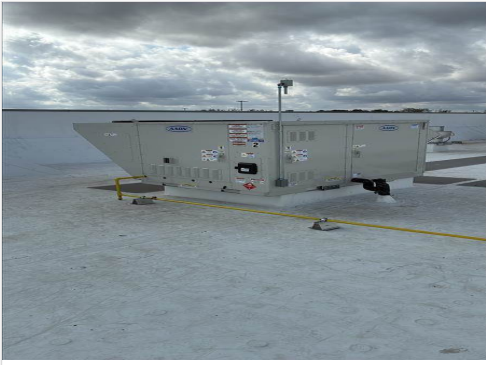
General	
	Actual
Unit free of Damage	YES
Fan Rotation Correct	YES
Unit Filters Clean	YES
Condensate Drain Installed	YES

Completed By: Zack Osborne on 11/20/2025

Notes:  
[1] NO SUITABLE LOCATION FOR RETURN TRAVERSE

Written By: Zack Osborne on 11/20/2025

## Unit Data - PHOTO LOG



11/19/2025

# National TAB

Project:11-17-25 WHATABURGER #1665 PEARLAND, TX

## AHU/RTU



### Diffuser Supply (GRD)

#### RTU2/DINING

Asset									
Asset Name	Location	Type	Size	DESIGN CFM	AK	CFM(1)	CFM(2)	FINAL CFM	% to design
SGRD1	ENTRANCE	P3		100		183	187	98	98.0
SGRD2	DINING	P3		100		96	103	103	103.0
SGRD3	DINING	P3		100		96	103	103	103.0
SGRD4	DINING	P3		100		96	103	103	103.0
SGRD5	DINING	P3		100		96	103	103	103.0
SGRD6	DINING	P3		100		96	103	103	103.0
SGRD7	DINING	P3		100		96	103	103	103.0
SGRD8	DINING	P3		100		96	103	103	103.0
SGRD9	DINING	P3		100		96	103	103	103.0
SGRD10	DINING	P3		100		96	103	103	103.0
SGRD11	DINING	P3		100		96	103	103	103.0
SGRD12	DINING	P3		100		96	103	103	103.0
SGRD13	DINING	P3		100		96	103	103	103.0
SGRD14	DINING	A4		145		104	115	153	105.5
SGRD15	DINING	A4		145		156	166	145	100.0
SGRD16	DINING	A4		145		126	134	147	101.4
SGRD17	CUSTOMER SERVICE	H9		145		177	185	145	100.0
SGRD18	CUSTOMER SERVICE	H9		170		93	98	154	90.6
Total				2050		1991	2121	2078	101.37%

# National TAB

Project:11-17-25 WHATABURGER #1665 PEARLAND, TX



## Diffuser Supply (GRD)

### RTU1/KITCHEN

Asset									
Asset Name	Location	Type	Size	DESIGN CFM	AK	CFM(1)	CFM(2)	FINAL CFM	% to design
SGRD1	DRIVE-THRU	A5	10"	345		328	281	328	95.1
SGRD2	DRIVE-THRU	P1	8"	200		157	136	182	91.0
SGRD3	KITCHEN	A6	12"	450		477	407	447	99.3
SGRD4	KITCHEN	A6	12"	450		461	395	485	107.8
SGRD5	KITCHEN	A6	12"	450		555	471	445	98.9
SGRD6	KITCHEN	A6	12"	450		636	567	450	100.0
SGRD7	KITCHEN	A6	12"	450		561	486	469	104.2
SGRD8	KITCHEN	A3	6"	70		82	80	71	101.4
SGRD9	OFFICE	A3	6"	190		250	213	199	104.7
SGRD10	BOH	A5	10"	320		287	256	331	103.4
SGRD11	BOH	A5	10"	175		226	179	187	106.9
SGRD12	BOH	H10	12"	150		282	249	143	95.3
SGRD13	RESTROOM	B3	6"	75		117	104	71	94.7
SGRD14	RESTROOM	B3	6"	75		115	105	72	96.0
Total				3850		4534	3929	3880	100.78%

### RTU2/DINING

Asset									
Asset Name	Location	Type	Size	DESIGN CFM	AK	CFM(1)	CFM(2)	FINAL CFM	% to design
SGRD1	ENTRANCE	P3		100		183	187	98	98.0
SGRD2	DINING	P3		100		96	103	103	103.0
SGRD3	DINING	P3		100		96	103	103	103.0
SGRD4	DINING	P3		100		96	103	103	103.0
SGRD5	DINING	P3		100		96	103	103	103.0
SGRD6	DINING	P3		100		96	103	103	103.0
SGRD7	DINING	P3		100		96	103	103	103.0
SGRD8	DINING	P3		100		96	103	103	103.0
SGRD9	DINING	P3		100		96	103	103	103.0
SGRD10	DINING	P3		100		96	103	103	103.0
SGRD11	DINING	P3		100		96	103	103	103.0
SGRD12	DINING	P3		100		96	103	103	103.0
SGRD13	DINING	P3		100		96	103	103	103.0
SGRD14	DINING	A4		145		104	115	153	105.5
SGRD15	DINING	A4		145		156	166	145	100.0
SGRD16	DINING	A4		145		126	134	147	101.4
SGRD17	CUSTOMER SERVICE	H9		145		177	185	145	100.0
SGRD18	CUSTOMER SERVICE	H9		170		93	98	154	90.6
Total				2050		1991	2121	2078	101.37%

### TRAVERSES/

Asset					
Asset Name	Size	DESIGN CFM	VEL(1)	FINAL CFM	% to design
RETURN TRAVERSE - RTU 1	20X18	1390	[1]		-
RETURN TRAVERSE - RTU 2	45X14	500	[1]		-
SUPPLY TRAVERSE - RTU 1	24X22	3850	[1]		-
SUPPLY TRAVERSE - RTU 2	30X12	2050	831	2078	101.4
Total		7790		2078	26.68%

Completed By: Zack Osborne on 11/21/2025

Asset	Notes	Date	Written By
RETURN TRAVERSE - RTU 1	[1] NO SUITABLE LOCATION FOR RETURN OR SUPPLY TRAVERSE. ONLY POSSIBLE AREAS ARE EITHER INACCESSIBLE AND/OR WOULD BE TOO TURBULENT FOR A RELIABLE READING.	11/21/2025	Zack Osborne
RETURN TRAVERSE - RTU 2	[1] NO SUITABLE LOCATION FOR RETURN TRAVERSE. ONLY POSSIBLE AREAS ARE EITHER INACCESSIBLE AND/OR WOULD BE TOO TURBULENT FOR A RELIABLE READING.	11/21/2025	Zack Osborne
SUPPLY TRAVERSE - RTU 1	[1] NO SUITABLE LOCATION FOR RETURN OR SUPPLY TRAVERSE. ONLY POSSIBLE AREAS ARE EITHER INACCESSIBLE AND/OR WOULD BE TOO TURBULENT FOR A RELIABLE READING.	11/21/2025	Zack Osborne

# National TAB

Project: 11-17-25 WHATABURGER #1665 PEARLAND, TX

## System/Unit: FAN - Exhaust



Asset: EF1

AREA:RESTROOM

Unit Data		
	Design	Actual
<b>MFG</b>	GREENHECK	GREENHECK
<b>Model Num</b>	G-080-VG	G-080-VG-1-17-X
<b>Serial Num</b>	-	27442922
<b>Type</b>	DOWNBLAST	DOWNBLAST
<b>Configuration</b>	VERTICAL	VERTICAL

Motor Data		
	Design	Actual
<b>Motor MFG</b>	-	BROAD-OCEAN
<b>Horsepower</b>	0.10	0.10
<b>Motor Rpm</b>	-	300-1750
<b>Phase</b>	1	1
<b>Voltage (rated)</b>	120	115
<b>Amperage (rated)</b>	-	1.38

Test Data		
	Design	Actual
<b>CFM</b>	300	231
<b>Fan RPM</b>	1680	DIRECT DRIVE
<b>Fan Rotation</b>	-	CCW
<b>Motor RPM</b>	-	DIRECT DRIVE
<b>System SetPt</b>	-	7.25
<b>RL Voltage</b>	-	122.2
<b>RL Amperage</b>	-	1.38
<b>Total ESP</b>	0.50"	0.20"
<b>Fan Inlet SP</b>	-	0.20"
<b>Fan Discharge SP</b>	-	ATM

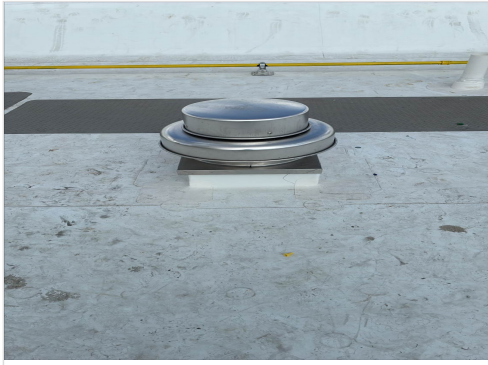
Completed By: Zack Osborne on 11/19/2025

**Notes:**

FAN SET TO HIGHEST POSSIBLE SPEED FOR GIVEN MAX AMPERAGE. NEITHER BATHROOM COULD BE BROUGHT WITHIN 10% OF DESIGN. DAMPERS ARE OPEN AND NO KINKING IN DUCT WAS SEEN.

Written By: Zack Osborne on 11/19/2025

## Unit Data - PHOTO LOG



11/19/2025

# National TAB

Project:11-17-25 WHATABURGER #1665 PEARLAND, TX

## FAN - Exhaust



### Diffuser Ret/Exh (GRD)

#### EF1/RESTROOM

Asset									
Asset Name	Location	Type	Size	DESIGN CFM	AK	CFM(1)	CFM(2)	FINAL CFM	% to design
EGRD1	RESTROOM	F1	8/8	150				120	80.0
EGRD2	RESTROOM	F1	8/8	150				111	74.0
Total				300		0	0	231	77%

# National TAB

Project: 11-17-25 WHATABURGER #1665 PEARLAND, TX

System/Unit: FAN - Exhaust



Asset: KEF1

AREA:KITCHEN HD

Unit Data		
	Design	Actual
MFG	GREENHECK	GREENHECK
Model Num	CUE-140-VG	DU180HFA
Serial Num	-	7418675
Type	UPBLAST	UPBLAST
Configuration	VERTICAL	VERTICAL

Motor Data		
	Design	Actual
Motor MFG	-	TELCO
Horsepower	0.75	2.0
Motor Rpm	-	1200
Phase	1	1
Voltage (rated)	208	208
Amperage (rated)	-	15.5

Test Data		
	Design	Actual
CFM	1995	2016
Fan RPM	1517	810
Fan Rotation	-	CCW
Motor RPM	-	DIRECT DRIVE
System SetPt	-	67%
RL Voltage	-	212.3
RL Amperage	-	3.70
Total ESP	1.00"	0.52"
Fan Inlet SP	-	-0.52"
Fan Discharge SP	-	ATM

Completed By: Zack Osborne on 11/19/2025

## Unit Data - PHOTO LOG



11/19/2025

# National TAB

Project: 11-17-25 WHATABURGER #1665 PEARLAND, TX

## System/Unit: FAN - Exhaust



Asset: KEF2

AREA:KITCHEN HD

Unit Data		
	Design	Actual
MFG	GREENHECK	GREENHECK
Model Num	CUE-120-VG	DU50HFA
Serial Num	-	7418675
Type	UPBLAST	UPBLAST
Configuration	VERTICAL	VERTICAL

Motor Data		
	Design	Actual
Motor MFG	-	TELCO
Horsepower	0.50	0.50
Motor Rpm	-	1800
Phase	1	1
Voltage (rated)	208	208
Amperage (rated)	-	3.8

Test Data		
	Design	Actual
CFM	1216	1240
Fan RPM	1415	1290
Fan Rotation	-	CCW
Motor RPM	-	DIRECT DRIVE
System SetPt	-	67%
RL Voltage	-	211.1
RL Amperage	-	2.60
Total ESP	0.75"	0.70"
Fan Inlet SP	-	-0.70"
Fan Discharge SP	-	ATM

Completed By: Zack Osborne on 11/19/2025

**Unit Data - PHOTO LOG**



**11/19/2025**

# National TAB

Project: 11-17-25 WHATABURGER #1665 PEARLAND, TX

## System/Unit: Kitchen Hood Type I



Asset: HD1

AREA:KITCHEN

Unit Data		
	Design	Actual
MFG	H&K DALLAS INC.	H&K DALLAS INC.
Model Num	CUSTOM	CUSTOM
Job / Serial Num	-	8175949-001
Type	TYPE 1 CANOPY	TYPE I CANOPY
Hood length	-	83"
Hood Width	-	55"

Test Data Exhaust		
	Design	Actual
Filter Type	-	BAFFLE
Filter Size 1	-	12X20
Filter Qty 1	-	8
Filter AK factor size 1	-	1.39
Filter Total AK Area	-	11.08
Filter1 FPM	-	179
Filter2 FPM	-	209
Filter3 FPM	-	189
Filter4 FPM	-	172
Filter5 FPM	-	171
Filter6 FPM	-	196
Filter7 FPM	-	183
Filter8 FPM	-	164
Filter Ave FPM(corr)	-	182
CFM	1995	2016

Cooking Equipment	
	Actual
Item 1	FLAT TOP GRILL
Item 2	FLAT TOP GRILL

Completed By: Zack Osborne on 11/19/2025

# National TAB

Project: 11-17-25 WHATABURGER #1665 PEARLAND, TX

## System/Unit: Kitchen Hood Type I



Asset: HD2

AREA:KITCHEN

Unit Data		
	Design	Actual
MFG	H&K DALLAS INC.	H&K DALLAS INC.
Model Num	CUSTOM	CUSTOM
Job / Serial Num	-	8177781-001
Type	TYPE 1 CANOPY	TYPE 1 CANOPY
Hood length	-	73"
Hood Width	-	23"

Test Data Exhaust		
	Design	Actual
Filter Type	-	BAFFLE
Filter Size 1	-	12X16
Filter Size 2	-	12X20
Filter Qty 1	-	3
Filter Qty 2	-	1
Filter AK factor size 1	-	1.07
Filters AK factor size 2	-	1.39
Filter Total AK Area	-	4.59
Filter1 FPM	-	250
Filter2 FPM	-	280
Filter3 FPM	-	300
Filter4 FPM	-	252
Filter Ave FPM(corr)	-	270
CFM	1216	1240

Cooking Equipment	
	Actual
Item 1	FRYER

Completed By: Zack Osborne on 11/19/2025