

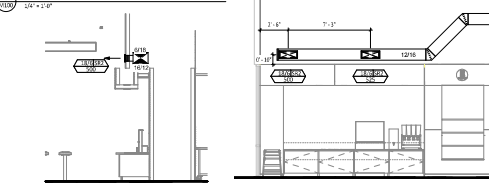
HVAC PLAN NOTES

1. SEE ARCHITECTURAL PLAN FOR CHILLER PLANT FOR CHILLING MECHANICAL EQUIPMENT LOCATION. TYPICAL.
2. PAINT ALL VERTICAL DUCTWORK IN DINING SPACE TO MATCH METAL CEILING FINISH. TYPICAL.
3. NOT USED.
4. 26 IS DUCT UP FROM TRANSITION TO RTU 1 RETURN CONNECTION IN ROOF CURB. RTU 1 SHALL HAVE AN INTEGRAL SMOKE DETECTOR MOUNTED IN THE RETURN AIR STREAM. THE SMOKE DETECTOR TO RTU 1 OPERATION.
5. 26 IS DUCT UP FROM TRANSITION TO RTU 2 RETURN CONNECTION IN ROOF CURB. RTU 2 SHALL HAVE AN INTEGRAL SMOKE DETECTOR MOUNTED IN THE RETURN AIR STREAM. INTERLOCKS SMOKE DETECTOR TO RTU 2 OPERATION.
6. 20 IS DUCT UP FROM BUILDING SUPPLY THROUGH ROOF TRANSITION TO RTU 1 SUPPLY CONNECTION IN ROOF CURB.
7. 20 IS DUCT UP FROM BUILDING SUPPLY THROUGH ROOF TRANSITION TO RTU 2 SUPPLY CONNECTION IN ROOF CURB.
8. 14 IS DUCT UP THROUGH ROOF TRANSITION TO MAIN SUPPLY CONNECTION IN ROOF CURB.
9. 14 IS DUCT UP FROM HOOD THROUGH ROOF TO 27 - COORDINATE WITH MECHANICAL PROVIDER REGARDING SMOKE DETECTOR SENSORS WITH FIRE DEPARTMENT OR SLOTTED RETURN AIR DUCT.
10. AIR DUCT UP THROUGH ROOF TO RTU 2 - COORDINATE WITH MECHANICAL PROVIDER REGARDING SMOKE DETECTOR SENSORS WITH FIRE DEPARTMENT OR SLOTTED RETURN AIR DUCT.
11. 26 IS DUCT DOWN TO TRANSFER AIR TO DUCT CONNECTION. TRANSITION TO SUPPLY RETURN OPENING SIZE. TYPICAL. CAN UNLISTED DUCT CONNECTIONS.
12. 18 IS DUCT DOWN TO TRANSFER AIR TO DUCT CONNECTION. TRANSITION TO SUPPLY RETURN OPENING SIZE. TYPICAL. CAN UNLISTED DUCT CONNECTIONS.
13. INSTALL SINGLE GANG VERTICAL BOX FOR OUTPOINT THERMOSTATS FURNISHED BY TMS FOR RTU 1 AND RTU 2 AT THIS LOCATION AT 8'0" AFF. COORDINATE WITH ELECTRICAL CONTRACTOR IN THIS AREA. PROVIDE WIRING AS SHOWN IN DETAIL BUEZD.
14. INSTALL OUTPOINT SMOKE SENSOR MODULE FURNISHED BY TMS FOR RTU 1 AT THIS LOCATION 7'2" AFF. DIRECTLY TO WALL AND FUNCTION SIGNAL. COORDINATE LOCATION WITH EQUIPMENT. PROVIDE WIRING AS SHOWN IN DETAIL BUEZD.
15. INSTALL OUTPOINT SMOKE SENSOR MODULE FURNISHED BY TMS FOR RTU 2 AT THIS LOCATION 6'0" AFF. DIRECTLY TO WALL AND FUNCTION SIGNAL. COORDINATE LOCATION WITH EQUIPMENT. PROVIDE WIRING AS SHOWN IN DETAIL BUEZD.
16. INSTALL OUTPOINT SMOKE SENSOR MODULE FURNISHED BY TMS FOR RTU 2 AT THIS LOCATION 6'0" AFF. DIRECTLY TO WALL AND FUNCTION SIGNAL. COORDINATE LOCATION WITH EQUIPMENT. PROVIDE WIRING AS SHOWN IN DETAIL BUEZD.
17. INSTALL OUTPOINT SMOKE SENSOR MODULE FURNISHED BY TMS FOR RTU 2 AT THIS LOCATION 6'0" AFF. DIRECTLY TO WALL AND FUNCTION SIGNAL. COORDINATE LOCATION WITH EQUIPMENT. PROVIDE WIRING AS SHOWN IN DETAIL BUEZD.
18. INSTALL REMOTE TEMPERATURE SENSOR FOR HOOD H20 AT THIS LOCATION 7'2" AFF. COORDINATE LOCATION WITH EQUIPMENT. PROVIDE 12-24 VDC TERMINATION CABLE FROM TEMPERATURE SENSOR THROUGH CONTROL PANEL.

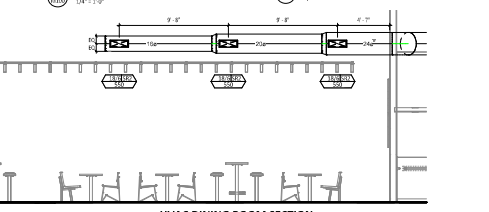
HVAC PLAN NOTES

19. INSTALL RETURN AIRWAYS, FLEX SUPPLY HOOD PER MANUFACTURER'S INSTALLATION INSTRUCTIONS AND AS DETAIL IN THE ARCHITECTURAL AND STRUCTURAL DRAWINGS. INSTALL HOOD ACCORDING TO THE REQUIREMENTS OF LISTING, IN COMPLIANCE WITH WORKING, THE BUILDING CODE, AND AUTHORIZED HOOD INSPECTION. HOOD SHALL HAVE AN INTEGRAL DUCT CURB AIR FLOWMETER SENSOR TO AUTOMATICALLY SHUT OFF THE EXHAUST AND MAKE UP AIR FANS IF COOKING TEMPERATURES ARE DETECTED. REMOTE DUCT SYSTEM TO BE WELDED OR FACTORY MANUFACTURED HOOD AND TO BE INSTALLED TO MEET THE CODE AND AS SHOWN. INSTALL HOOD PER DETAILS 2, 4, AND 5 AND 6. CONTRACTOR SHALL PROVIDE AN INDEPENDENT TESTING AGENCY FOR TESTING THE RELIABILITY OF THE GASLEAK DETECT SYSTEM.
20. INSTALL REMOTE CONDENSING UNIT FOR MAKE-UP COOLER ON ROOF AS DETAIL IN THE ARCHITECTURAL AND STRUCTURAL DRAWINGS. INSTALL REFRIGERANT LINE SET, THERMOSTATIC EXPANSION VALVE, SOLENOID VALVE, TEMPERATURE CONTROL, SIGHT GLASS, FILL ORDER, PRESSURE CONTROL, LOW AMBIENT CONTROL, AND HEAT-PROOF HOODING. TRAP AND SLOPE REFRIGERANT LINES PER MANUFACTURER'S RECOMMENDATIONS. INSULATION SHALL COMPLY WITH ASHRAE 90.1 STANDARD 5.5. INSTALL THE REFRIGERANT LINE SET UNDER THE ROOF DECK TO WITHIN 2" OF THE CONDENSING UNIT. USE 2" SLOPE IN WALKING COOLER HOOD FOR REFRIGERANT LINE SET AND SLOPE PER THE COOLER MANUFACTURER'S INSTALLATION INSTRUCTIONS AFTER THE SET IS INSTALLED.
21. INSTALL REMOTE CONDENSING UNIT FOR MAKE-UP COOLER ON ROOF AS DETAIL IN THE ARCHITECTURAL AND STRUCTURAL DRAWINGS. INSTALL REFRIGERANT LINE SET, THERMOSTATIC EXPANSION VALVE, SOLENOID VALVE, TEMPERATURE CONTROL, SIGHT GLASS, FILL ORDER, PRESSURE CONTROL, LOW AMBIENT CONTROL, AND HEAT-PROOF HOODING. TRAP AND SLOPE REFRIGERANT LINES PER MANUFACTURER'S RECOMMENDATIONS. SEAL PIPING PENETRATIONS THROUGH ROOF. INSULATION SHALL COMPLY WITH ASHRAE 90.1 STANDARD 5.5. INSTALL THE REFRIGERANT LINE SET UNDER THE ROOF DECK TO WITHIN 2" OF THE REMOTE CONDENSING UNIT. USE 2" SLOPE IN WALKING COOLER HOOD FOR REFRIGERANT LINE SET AND SLOPE PER THE COOLER MANUFACTURER'S INSTALLATION INSTRUCTIONS AND AS DETAIL IN THE ARCHITECTURAL AND STRUCTURAL DRAWINGS.
22. INSTALL ROOF TOP EQUIPMENT PER MANUFACTURER'S INSTALLATION INSTRUCTIONS AND AS DETAIL IN THE ARCHITECTURAL AND STRUCTURAL DRAWINGS.
23. INSTALL EXHAUST FAN 27 - PER DETAIL AND AS DETAIL IN THE ARCHITECTURAL AND STRUCTURAL DRAWINGS. INSTALL GREASE VIRUS-AND SYSTEM FURNISHED BY CHRYSLER ON EXHAUST FAN 27.
24. PROVIDE SUPPLY FIBERGLASS CONNECTION TO SUPPLY SYSTEM PER DETAIL L2000. TYPICAL.
25. PROVIDE ALCOHOL VAPOR REMOTE SMOKE DETECTOR MANUFACTURED WITH REMOTE 10" OPERATED ROSE. WIRE A PIPER BACK TO EACH SMOKE DETECTOR. MOUNT 10" AFF. TYPICAL.
26. INSTALL REMOTE HALO AIR PURGER FURNISHED BY TMS IN RTU PER DETAIL BUEZD. SEE ELECTRICAL DRAWINGS FOR WIRING CONNECTION INFORMATION. INSTALL WIRING THROUGH AIR AND/OR ENCLOSURE PER DETAIL AND ON AN RTU ACCESS DOOR(S) THROUGH WHICH THE REMOTE HALO HOOD IS TO BE INSTALLED.
27. MAINTAIN 2" CLEARANCE BETWEEN WATER HEATER FLEX TERMINATION AND OUTSIDE AIR INTAKE. MAINTAIN 12" CLEARANCE BETWEEN WATER HEATER COMBUSTION AIR INTAKE AND EXHAUST FAN #1-3 DISCHARGE. SEE FLOORING DRAWINGS FOR FLOOR INFORMATION ON WATER HEATER FLEX AND COMBUSTION AIR TERMINATIONS.
28. ADJUST SUPPLY PRESSURES SO THAT SUPPLY AIR HITS WALL ON OPPOSITE SIDE OF ROOM AT APPROXIMATELY 7' AFF WITH NO DRAFTS FELT IN THE DINING ROOM.

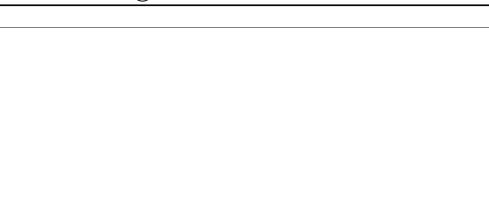
HVAC DINING ROOM RETURN SECTION



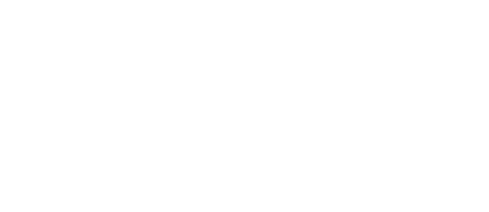
HVAC DINING ROOM SECTION



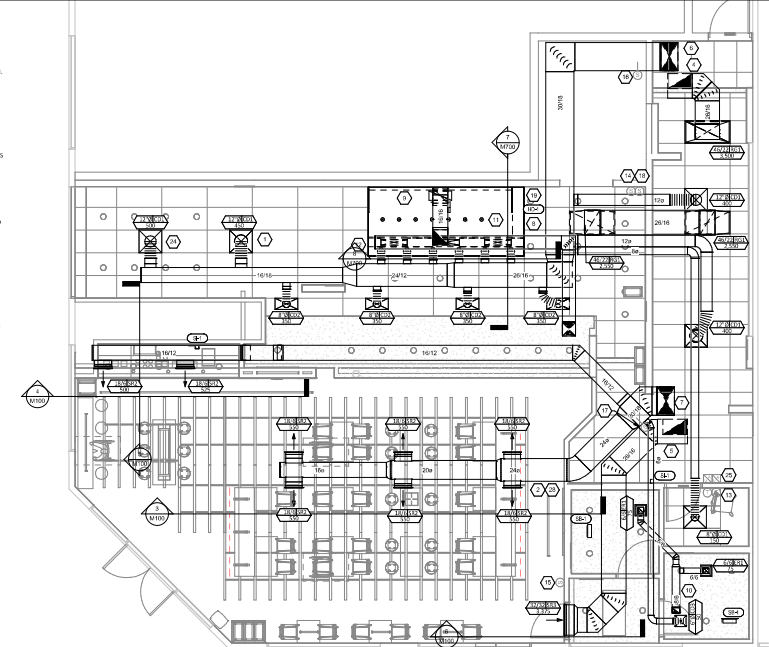
HVAC DINING ROOM SECTION



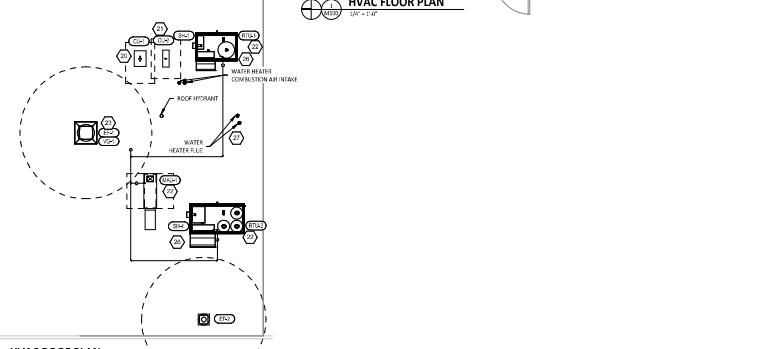
HVAC DINING ROOM SECTION



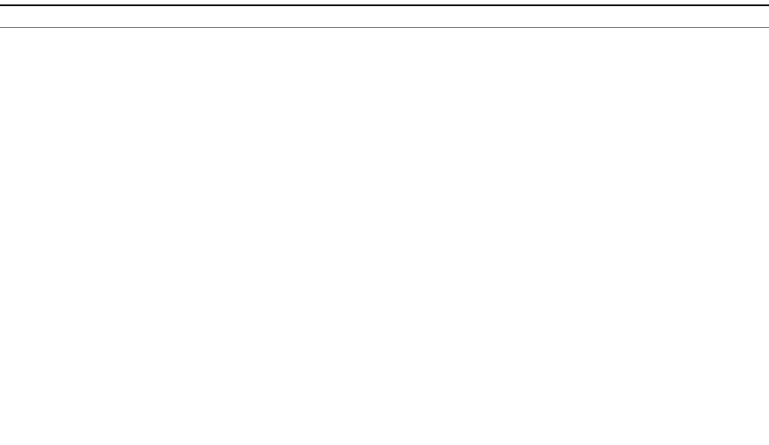
HVAC DINING ROOM SECTION



HVAC FLOOR PLAN



HVAC ROOF PLAN



HVAC ROOF PLAN



DATE: 08/18/24

OWNER: MCGRAW HILL, INC.
 12000 WESTHELL DRIVE
 HOUSTON, TEXAS 77066
 PROJECT: GULF GATE CENTER WALL

STORE NO.: 5234
 GULF GATE CENTER WALL
 HOUSTON, TX 77057

NO.	DATE	DESCRIPTION
1	08/18/24	CITY COMMENTS - R2

NO.	DATE	DESCRIPTION
1	08/18/24	CITY COMMENTS - R2

PROJECT: GULF GATE CENTER WALL
 SHEET NO.: 5234
 DATE: 08/18/24

HVAC PLAN

M100

VENTILATION SCHEDULE based on 02-1-2013													
Zone Identification	Occupancy Category	Zone Floor Area A _z (ft ²)	Area Outdoor Airflow Rate R _o (CFM/ft ²)	People Outdoor Airflow Rate R _p (CFM/person)	Occupant Density (per1000ft ²)	Zone Population P _z (people)	Zone Air Effectiveness E _z	Breathing Zone Outdoor Airflow V _{bz} (CFM)	Exhaust Rate (CFM/ft ²)	Required Exhaust Airflow (CFM)	Actual Provided Outdoor Airflow (CFM)	Actual Provided Exhaust Airflow (CFM)	Mechanical Unit
Comidor	Comidor	48	0.06	0	0	0	0.80	3	0	0	10	0	
Comida	Restaurant Dining Rooms	958	0.18	7.5	70	87	0.80	845	0	0	960	0	
Kitchen	Kitchen (Cooking)	1226	0.12	7.5	20	25	0.80	415	0.7	858.2	1780	2550	
Mens RR	Toilets - Public	59	0	0	0	0	0.80	0	50.70 Per Fixture	70	0	75	
Office	Office Space	38	0.06	5	5	1	0.80	9	0	0	20	0	
Womens RR	Toilets - Public	57	0	0	0	0	0.80	0	50.70 Per Fixture	70	0	75	
Total		2384						1272		996.2	2800	2700	

SANITIZING EQUIPMENT SCHEDULE

TAG	COUNT	DESCRIPTION	FURNISHED BY	INSTALLED BY	MANUFACTURER	MODEL	REMARKS
SB-1	2	BATHROOM AIR PURIFICATION UNIT	TYV	GC	HGT ENVIRONMENTAL GROUP	RMF-ASSEMBLY	SEE ELECTRICAL SHEETS FOR CONNECTION INFORMATION
SB-1	2	KITCHEN AIR PURIFICATION UNIT	TYV	GC	HGT ENVIRONMENTAL GROUP	RMF-800	SEE DETAIL ON/AS FOR INSTALLATION INFORMATION
SB-1	3	ICE MACHINE EQUIPMENT SYSTEM	TYV	GC	HGT ENVIRONMENTAL GROUP	RMF-800	SEE FLOORING DRAWINGS FOR INSTALLATION INFORMATION

AIR BALANCE SCHEDULE

TAG	SUPPLY FLOW	RETURN FLOW	EXHAUST FLOW	SUBTOTAL
EL-1	200 CFM	0 CFM	200 CFM	200 CFM
EL-2	0 CFM	0 CFM	0 CFM	0 CFM
MAU-1	1,800 CFM	0 CFM	0 CFM	1,800 CFM
EL-1	4,000 CFM	3,000 CFM	0 CFM	1,000 CFM
EL-2	4,375 CFM	3,375 CFM	0 CFM	1,000 CFM

CONTROL FUNCTIONS

- THE MAIN EXHAUST FAN AND MAKE-UP AIR UNIT SHALL BE PROVIDED TO OPERATE TOGETHER. THE CONTROL SHALL BE INSTALLED BY A VAV ON AND INCLUDE A FAN PROTECTION OVERLOAD.
- THE THERMOSTAT IN EACH ZONE IS CONTROLLED BY ZONE THERMOSTATS SENSORS CONNECTED TO THE THERMOSTATS LOCATED IN THE OFFICE. ALL ZONES SHALL OPERATE IN ACCORDANCE WITH THE OPERATION DURING OCCUPANCY AND "NIGHT-TIME" AS NOTED TO MAINTAIN SET POINTS DURING UNOCCUPIED PERIODS. ALL ZONE THERMOSTATS SHALL BE CONTINUOUSLY MONITORED IN OCCUPIED MODE OR WHEN THE ZONE THERMOSTAT IS ON AND SHALL BE CLOSED UNOCCUPIED PERIODS.
- THE THERMOSTAT SHALL DETERMINE OCCUPIED/UNOCCUPIED STATUS BASED ON THE SCHEDULE IN THE ENERGY MANAGEMENT SYSTEM.

FAN SCHEDULE

TAG	DESCRIPTION	AIRFLOW	E.S.P.	WEIGHT	ELECTRICAL MOTOR POWER	V/3PH	FURNISHED BY	INSTALLED BY	MANUFACTURER	MODEL	REMARKS
FF-1	UPRAISED FAN ROOM FAN	2,000 CFM	1.01 in Hg	400 lb	7.70	208/3/0	HS	CC	CAPTIVE AIRE	DR-200A	DIRECT DRIVE VAV AND UPRAISED EXHAUST FAN BUNGS-LED WITH WEATHERPROOF DISCONNECT AND WINDSTOP GUIDE
FF-2	DOWNBLAST RESTROOM EXHAUST FAN	250 CFM	0.60 in Hg	100 lb	0.18 HP	120/1/0	HS	CC	CAPTIVE AIRE	DR-200A	DIRECT DRIVE DOWNBLAST RESTROOM EXHAUST FAN BUNGS-LED WITH WEATHERPROOF DISCONNECT SPEED CONTROL, BACKSTOP DAMPER, AND CONUS

AIR TERMINAL SCHEDULE

TAG	DESCRIPTION	FACE SIZE	MATERIAL	FINISH	ACOUNTING	FURNISHED BY	INSTALLED BY	MANUFACTURER	MODEL	NOTES
EL-1	PERFORATED CEILING DIFFUSER	24" X 24"	ALUMINUM	WHITE	LAN-ICE-REG	GC	GC	4320A TYPE1		PROVIDE W/PT-INTERNAL DED
EL-2	PERFORATED CEILING DIFFUSER	24" X 24"	ALUMINUM	WHITE	LAN-ICE-REG	GC	GC	4320A TYPE1		PROVIDE W/PT-INTERNAL DED, REMOTE 4 WAY DIFFUSER
EL-3	PERFORATED CEILING DIFFUSER	12" X 12"	ALUMINUM	WHITE	SURFACE MOUNT	GC	GC	4320A TYPE1		PROVIDE W/PT-INTERNAL DED
EL-4	PERFORATED CEILING DIFFUSER	12" X 12"	ALUMINUM	WHITE	SURFACE MOUNT	GC	GC	4320A TYPE1		PROVIDE W/PT-INTERNAL DED
EL-5	PERFORATED CEILING DIFFUSER	18" X 24"	ALUMINUM	WHITE	SURFACE MOUNT	GC	GC	4320A TYPE1		PROVIDE W/PT-INTERNAL DED
EL-6	PERFORATED CEILING DIFFUSER	18" X 24"	ALUMINUM	WHITE	SURFACE MOUNT	GC	GC	4320A TYPE1		PROVIDE W/PT-INTERNAL DED
EL-7	POURIE OPERATOR SUPPLY REGISTER	500	ALUMINUM	WHITE	WALL	GC	GC	5340H		PROVIDE W/PT-INTERNAL DED
EL-8	POURIE OPERATOR SUPPLY REGISTER	500	ALUMINUM	WHITE	WALL	GC	GC	5340H		PROVIDE W/PT-INTERNAL DED

VIROGUARD SCHEDULE

TAG	COUNT	DESCRIPTION	DUCT CONNECTION SIZE	FAN CAPACITY	FURNISHED BY	INSTALLED BY	MANUFACTURER	MODEL	REMARKS
VI-1	1	MACHINE RATED VIROGUARD HOOD EXHAUST FAN HOOD TOP CONTAMINANT SYSTEM	18" X 12"	1000 CFM	HS	CC	DOWNWIND		

CONDENSING UNIT SCHEDULE

TAG	DESCRIPTION	NOMINAL CAPACITY	NUMBER OF COMPRESSORS	REFRIGERANT TYPE	WEIGHT	MOOP	FLA	V/3PH	FURNISHED BY	INSTALLED BY	MANUFACTURER	MODEL	REMARKS
CU-1	CONDENSING UNIT - WALL IN CEILING	0	1	R-404A	104.0	100.0	15A	3A	208/3/0	HS	GC	4P30000-30	FURNISHED WITH WALL IN CEILING
CU-1	FRIGT CONDENSER - LOW CAPACITY ICE MAKER	0	1	R-404A	11.86	100.0	100V/60	MS	GC	ROHS/MS	LUC-942		FURNISHED WITH ICE MAKER
CU-1	FRIGT CONDENSER - MEDIUM CAPACITY ICE MAKER	0	1	R-404A	3.86	100.0	100V/60	MS	GC	ROHS/MS	LUC-942		FURNISHED WITH ICE MAKER

MAKEUP AIR UNIT SCHEDULE

TAG	DESCRIPTION	AIRFLOW	E.S.P.	INPUT POWER	OUTPUT	EAT	WEIGHT	ELECTRICAL MOTOR POWER	V/3PH	FURNISHED BY	INSTALLED BY	MANUFACTURER	MODEL	REMARKS
MAU-1	DIRECT FIRE MAKEUP AIR UNIT	1,800 CFM	0.50 in Hg	10,000 Btu/h	15,000 Btu/h	21.7	630.0	1.70	208/3/0	HS	CC	CAPTIVE AIRE	AL-6-250-100	12.5.1.1 MAKEUP DOWNFLOW - FURNISHED WITH DISCONNECT, ROOF CURB, SOFT START, VAV, AND EXHAUST AIRFLOW FILTERS

KITCHEN HOOD SCHEDULE

TAG	DESCRIPTION	MAX COOKING DEMAND	AIRFLOW	E.S.P.	EXHAUST PLENUM NO.	EXHAUST PLENUM LENGTH	EXHAUST PLENUM WIDTH	EXHAUST PLENUM LENGTH	EXHAUST PLENUM WIDTH	EXHAUST PLENUM LENGTH	EXHAUST PLENUM WIDTH	EXHAUST PLENUM LENGTH	EXHAUST PLENUM WIDTH	NO. OF LIGHT FIXTURES	WEIGHT	FURNISHED BY	INSTALLED BY	MANUFACTURER	MODEL	REMARKS							
HO-1	TYPICAL HOOD WITH PERFORATED MAKEUP AIR SUPPLY PLENUMS	600 F	2,550 CFM	0.97 in Hg	1	10'	2'-0"	12'-9"	4'-3"	13'-9"	1'-7"	1'-7"	1'-7"	3,000 CFM	3	6'	2'-4"	700 CFM	6	8'	8	1,550 lb	HS	GC	CAPTIVE AIRE	S24-N02-400P	WALL, 18 GA. TYPE 430 SS. FURNISHED WITH VERTICAL END PANEL, VAPORPROOF PACKAGING LIGHT FIXTURES, 4" DUCT, 18 GA. TYPE 430 SS. INTERNAL FILTER, CABINET, MITERED EXHAUST SUPPRESSION SYSTEM, DUCT COLLAR TEMPERATURE SENSOR, PREHEAT PACKAGE, DRAIN, FIRE STOPPING KIT, CONNECT, AND 4-1/2" DUCT JOINTS

ROOFTOP UNIT SCHEDULE

TAG	DESCRIPTION	NOMINAL CAPACITY	FEER	TOTAL AREA	DA	E.S.P.	TOTAL SENSIBLE	DB	CONDENSATE	INPUT	OUTPUT	EAT	COMPRESSION	CIRCUITS	TYPE	WEIGHT	MOOP	FLA	V/3PH	FURNISHED BY	INSTALLED BY	MANUFACTURER	MODEL	REMARKS			
RU-1	TYPICAL ROOFTOP UNIT	12.5 ton	11	4,000 CFM	100.0 CFM	0.80 in Hg	126,000 Btu/h	16,000 Btu/h	80 F	67 F	95 F	180,000 Btu/h	225,000 Btu/h	10.7	2	2	7.4/30A	13.8/10	35.4	33.4	405/0/0	HS	GC	CARRIER	8BK112	FURNISHED WITH COND. INTENT AIRFLOW, BARRIER RELIEF, NET SMOKE DETECTOR W/ REMOTE RESET, AIRFLOW METER, M.F.O., AND AIR FILTERS, CURB, AIR GUIDE, TROUBLE SHOOT ACCESS PANELS, DISCONNECT, & PAINT ACCOUNTED CONVENIENCE RECEPTACLE, REHEAT, PROVIDE WITH INTERNAL DED.	
RU-2	DRYING ROOM ROOFTOP UNIT	12.5 ton	11	4,175 CFM	1,000 CFM	0.80 in Hg	148,000 Btu/h	13,500 Btu/h	80 F	67 F	95 F	180,000 Btu/h	248,000 Btu/h	10.7	2	2	7.4/30A	15.5/10	32.9/10	35.4	33.4	405/0/0	HS	GC	CARRIER	8BK114	FURNISHED WITH COND. INTENT AIRFLOW, BARRIER RELIEF, NET SMOKE DETECTOR W/ REMOTE RESET, AIRFLOW METER, M.F.O., AND AIR FILTERS, CURB, AIR GUIDE, TROUBLE SHOOT ACCESS PANELS, DISCONNECT, & PAINT ACCOUNTED CONVENIENCE RECEPTACLE, REHEAT, PROVIDE WITH INTERNAL DED.



STORE NO: 5234
 GULFGATE CENTER MALL
 HOUSTON, TX 77057

Date Rec'd	Checked
02/06/2014	02/06/14
02/07/2014	02/07/14

Date	Checked
02/06/14	02/06/14
02/07/14	02/07/14

HVAC SCHEDULES
M600

PLUMBING SUPPLY PLAN NOTES

- CONNECT TO EXISTING 3" WATER LINE. CONVECTORS TO BE IDENTIFIED. LOCATION OF WATER STOP OUT AND EXISTING WATER MAIN PRIOR TO START OF ANY WORK.
- PROVIDE 2" PIPING FROM THE TO THE BMS-BUS SOCK CARTRIDGE AT 100' MAX. SODA CARTRIDGE SHALL HAVE AN INTEGRAL ASSE-100-ATED CARTRIDGE INVERAGE AND FLOW PREVENTION DEVICE.
- PROVIDE WATER HEATERS (EWH-1 AND EWH-2) PER DETAIL 1-17700.
- PROVIDE WATER FILTRATION TO WALL PER DETAIL 1-17700. PROVIDE 1/2" SUPPLY PIPES FROM THE TO ICE MAKER AND SODA CARTRIDGE TO SINKS.
- PROVIDE 1/2" PIPING FROM THE TO THE ICE MAKER AT 5' MAX. PROVIDE 1/2" LONG STAINLESS STEEL FLEXIBLE HOSE TO THE SINKS. WATER CONNECTION WITH MINIMUM 5/8" ID BRASS ADPT 3/4 X 27-27-27 FOR EQUAL FOR FINAL CONNECTION TO ICE MAKER.
- PROVIDE DOMESTIC WATER ROUGH-INS FOR THE HOOD MAIN FAUCET AT 24" AFF. PROVIDE DOMESTIC WATER ROUGH-INS FOR THE CHEMICAL DISPENSER FAUCET (FH-3) AT 24" AFF. DIRECTLY ABOVE THE HOOD MAIN FAUCET. SEE ARCHITECTURAL FOR ADDITIONAL INFORMATION.
- CONNECT TO NEW GAS SERVICE LINE. LANDLORD TO PROVIDE NEW GAS METER.
- PROVIDE GAS CONNECTIONS TO THE COOKING EQUIPMENT PER DETAIL 1-17700.
- SUPPORT THE GAS PIPES ON THE ROOF PER DETAIL 1-17700. WOOD BLOCKING IS NOT AN ACCEPTABLE METHOD OF SUPPORTING THE GAS PIPES.
- PROVIDE ACCESSIBLE SHUTOFF VALVE BELOW THE DISAPENSER AND INSTALL THE STRAIGHT UNIBLOCK WITH THE DISH MACHIN IN AN ACCESSIBLE LOCATION AT THE CONNECTION TO THE UNIT.
- REFER TO ARCHITECTURAL DRAWINGS FOR FINISHES OF INTERIOR AND EXTERIOR EXPOSED GAS PIPES.
- PROVIDE DOMESTIC WATER ROUGH-INS FOR THE CHEMICAL DISPENSER FAUCET (FH-3) AT 24" AFF. SEE ARCHITECTURAL ELEVATION FOR ADDITIONAL INFORMATION.
- PROVIDE DOMESTIC WATER ROUGH-INS FOR THE VICTORY WASH DISPENSER FAUCET (FH-3) AT 24" AFF. SEE ARCHITECTURAL ELEVATION FOR ADDITIONAL INFORMATION.
- PROVIDE ROUGH-INS TO INTERIOR MAIN GAS AS SHOWN PER DETAIL 1-17700. 1/2" MAX. CIRCULATING MAIN PIPING SHALL BE ROUTED WITHIN 2" OF EXISTING CONNECTIONS.
- PROVIDE INTERIOR EQUIPMENT GAS SHUTOFF 4" BELOW THE CEILING PER DETAIL 1-17700.
- CONNECT CHEMICAL DISPENSER TO HBL. CHEMICAL DISPENSER HAS AN INTEGRAL AIR GAP AS IS SHOWN IN DETAIL 1-17700.

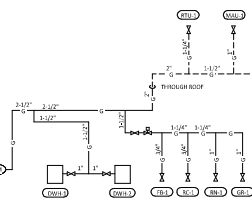
PLUMBING SUPPLY PLAN NOTES

- PROVIDE 1/2" DOMESTIC WATER ROUGH-INS FOR THE DOMESTIC WATER VALVE. WATTS PIPING ON WATER SUPPLY TO OTHER MAINS IN CL. PROVIDE ANGLE STOP (RCP) ON EACH EXTERIOR MAINING VALVE TO MAKE MAIN LINE CONNECTION FROM RANGE STOPS TO WATER VALVE AND FROM MAIN VALVE TO FAUCET LONG BRASS STAINLESS STEEL HOSE. ADJUST MAINING VALVES FOR A DISCRETE TEMPERATURE OF APPROXIMATELY 120°F.
- PROVIDE ACCESSIBLE VALVE IN WATER SUPPLY TO ROTULRE AS SHOWN.
- PROVIDE GAS CONNECTION TO THE HOOD COOKER PER DETAIL 1-17700.
- PROVIDE GAS ROUGH-INS TO THE HOOD BURNING GAS COOKER. TRIM 5/8" NAT VALVES AND FURTHER GAS ACCESSORY (ONE) FURNISH IS TO BE INSTALLED INTO PLACE.
- PROVIDE 1/2" VITREOUS WATER ROUGH-INS TO THE ICE MAKER AT 24" AFF. PROVIDE 1/2" LONG STAINLESS STEEL FLEXIBLE HOSE TO THE ICE MAKER. WATER CONNECTION WITH MINIMUM 5/8" ID BRASS ADPT 3/4 X 27-27-27 FOR EQUAL FOR FINAL CONNECTION TO ICE MAKER.
- INSTALL HBL. MAKE ICE MAKER SANITIZER FURNISHED BY SUPPLIER. CHOPLET'S INSTALLATION INSTRUCTIONS.
- PROVIDE 3/4" DOMESTIC HOT AND COLD WATER ROUGH-INS FOR THE PREP SINK (SK-2) FAUCET AT 24" AFF. TO GO TO THE VICTORY AND CHEMICAL DOCK. TO BE INSTALLED DIRECTLY BELOW THE PREP SINK BASIN. MAKE FINAL CONNECTION TO PREP SINK FAUCET USING 3/4" BRASS STAINLESS STEEL WATER HEATER CONNECTION HOSE.
- PROVIDE 1/2" WATER TO THE DISH WASHING MACHINE FINAL CONNECTION USING HOSE FURNISHED WITH DISH WASHING MACHINE. PROVIDE WATER HAMMER ARRESTOR ON HOT WATER LINE. PROVIDE AN ACCESSIBLE SHUTOFF VALVE BELOW THE DISAPENSER AND INSTALL THE STRAIGHT UNIBLOCK WITH THE DISH MACHIN IN AN ACCESSIBLE LOCATION AT THE CONNECTION TO THE UNIT.
- PROVIDE ROOF HOOKUP WITH 3/4" BOTTOM OF ROOF. INSTALLED 30" ABOVE THE BOTTOM OF ROOF. PROVIDE ACCESSIBLE SHUTOFF VALVE IN WATER SUPPLY TO HOOD. PROVIDE SUPPORT ROOF HOOKUP PER THE MANUFACTURER'S INSTALLATION INSTRUCTIONS.
- PROVIDE INTERIOR DOMESTIC WATER ROUGH-INS FOR THE VICTORY PULL KICKER FAUCET (FH-1) AT 24" AFF. SEE ARCHITECTURAL ELEVATION FOR DETAIL.
- PROVIDE WATER SERVICE FROM DETAIL 1-17700.
- INSTALL HBL. MAKE ICE MAKER SANITIZER FURNISHED BY SUPPLIER. CHOPLET'S INSTALLATION INSTRUCTIONS. LOCATE HBL BELOW OF THE COUNTER IN A LOCATION THAT DOES NOT INTERFERE WITH THE HOODING BELOW THE COUNTER.
- PROVIDE ACCESSIBLE TRAP PRIMER ABOVE LAV IN CEILING AS SHOWN. INSTALL PER MANUFACTURER'S INSTALLATION INSTRUCTIONS WITH A SERVICE VALVE AT THE TRAP PRIMER HBL. PROVIDE 1/2" DISTRIBUTION PIPING TO LOCATED FROM TRAP PRIMER CONNECTIONS AS SHOWN. HORIZONTAL DISTRIBUTION PIPING SHALL HAVE CONTINUOUS SLOPE TO THE FLOOR DRAINS.
- PROVIDE WATER SUBLIMATOR AND HEATSEAL READY. COORDINATE WITH LOCAL UTILITY.

PLUMBING GAS CONNECTIONS

TAG	DESCRIPTION	CONNECTION SIZE	EQUIVALENT LENGTH	IMPL.
EW-1	WATER HEATER (EWH-1) (WATERS)	3/4"	55'	130,200 BRN
EW-2	WATER HEATER (EWH-2) (WATERS)	3/4"	55'	130,200 BRN
EP-1	DISPENSER	1/2"	85'	160,800 BRN
EP-2	DISPENSER	1/2"	85'	130,200 BRN
EP-3	DISPENSER (EWH-3) (WATERS)	1/2"	70'	130,200 BRN
EP-4	DISPENSER	1/2"	85'	130,200 BRN
EP-5	DISPENSER	1/2"	85'	130,200 BRN
EP-6	DISPENSER	1/2"	85'	130,200 BRN
EP-7	DISPENSER	1/2"	85'	130,200 BRN
EP-8	DISPENSER	1/2"	85'	130,200 BRN
EP-9	DISPENSER	1/2"	85'	130,200 BRN
EP-10	DISPENSER	1/2"	85'	130,200 BRN
EP-11	DISPENSER	1/2"	85'	130,200 BRN
EP-12	DISPENSER	1/2"	85'	130,200 BRN
EP-13	DISPENSER	1/2"	85'	130,200 BRN
EP-14	DISPENSER	1/2"	85'	130,200 BRN
EP-15	DISPENSER	1/2"	85'	130,200 BRN
EP-16	DISPENSER	1/2"	85'	130,200 BRN
EP-17	DISPENSER	1/2"	85'	130,200 BRN
EP-18	DISPENSER	1/2"	85'	130,200 BRN
EP-19	DISPENSER	1/2"	85'	130,200 BRN
EP-20	DISPENSER	1/2"	85'	130,200 BRN
EP-21	DISPENSER	1/2"	85'	130,200 BRN
EP-22	DISPENSER	1/2"	85'	130,200 BRN
EP-23	DISPENSER	1/2"	85'	130,200 BRN
EP-24	DISPENSER	1/2"	85'	130,200 BRN
EP-25	DISPENSER	1/2"	85'	130,200 BRN
EP-26	DISPENSER	1/2"	85'	130,200 BRN
EP-27	DISPENSER	1/2"	85'	130,200 BRN
EP-28	DISPENSER	1/2"	85'	130,200 BRN
EP-29	DISPENSER	1/2"	85'	130,200 BRN
EP-30	DISPENSER	1/2"	85'	130,200 BRN
EP-31	DISPENSER	1/2"	85'	130,200 BRN
EP-32	DISPENSER	1/2"	85'	130,200 BRN
EP-33	DISPENSER	1/2"	85'	130,200 BRN
EP-34	DISPENSER	1/2"	85'	130,200 BRN
EP-35	DISPENSER	1/2"	85'	130,200 BRN
EP-36	DISPENSER	1/2"	85'	130,200 BRN
EP-37	DISPENSER	1/2"	85'	130,200 BRN
EP-38	DISPENSER	1/2"	85'	130,200 BRN
EP-39	DISPENSER	1/2"	85'	130,200 BRN
EP-40	DISPENSER	1/2"	85'	130,200 BRN
EP-41	DISPENSER	1/2"	85'	130,200 BRN
EP-42	DISPENSER	1/2"	85'	130,200 BRN
EP-43	DISPENSER	1/2"	85'	130,200 BRN
EP-44	DISPENSER	1/2"	85'	130,200 BRN
EP-45	DISPENSER	1/2"	85'	130,200 BRN
EP-46	DISPENSER	1/2"	85'	130,200 BRN
EP-47	DISPENSER	1/2"	85'	130,200 BRN
EP-48	DISPENSER	1/2"	85'	130,200 BRN
EP-49	DISPENSER	1/2"	85'	130,200 BRN
EP-50	DISPENSER	1/2"	85'	130,200 BRN
EP-51	DISPENSER	1/2"	85'	130,200 BRN
EP-52	DISPENSER	1/2"	85'	130,200 BRN
EP-53	DISPENSER	1/2"	85'	130,200 BRN
EP-54	DISPENSER	1/2"	85'	130,200 BRN
EP-55	DISPENSER	1/2"	85'	130,200 BRN
EP-56	DISPENSER	1/2"	85'	130,200 BRN
EP-57	DISPENSER	1/2"	85'	130,200 BRN
EP-58	DISPENSER	1/2"	85'	130,200 BRN
EP-59	DISPENSER	1/2"	85'	130,200 BRN
EP-60	DISPENSER	1/2"	85'	130,200 BRN
EP-61	DISPENSER	1/2"	85'	130,200 BRN
EP-62	DISPENSER	1/2"	85'	130,200 BRN
EP-63	DISPENSER	1/2"	85'	130,200 BRN
EP-64	DISPENSER	1/2"	85'	130,200 BRN
EP-65	DISPENSER	1/2"	85'	130,200 BRN
EP-66	DISPENSER	1/2"	85'	130,200 BRN
EP-67	DISPENSER	1/2"	85'	130,200 BRN
EP-68	DISPENSER	1/2"	85'	130,200 BRN
EP-69	DISPENSER	1/2"	85'	130,200 BRN
EP-70	DISPENSER	1/2"	85'	130,200 BRN
EP-71	DISPENSER	1/2"	85'	130,200 BRN
EP-72	DISPENSER	1/2"	85'	130,200 BRN
EP-73	DISPENSER	1/2"	85'	130,200 BRN
EP-74	DISPENSER	1/2"	85'	130,200 BRN
EP-75	DISPENSER	1/2"	85'	130,200 BRN
EP-76	DISPENSER	1/2"	85'	130,200 BRN
EP-77	DISPENSER	1/2"	85'	130,200 BRN
EP-78	DISPENSER	1/2"	85'	130,200 BRN
EP-79	DISPENSER	1/2"	85'	130,200 BRN
EP-80	DISPENSER	1/2"	85'	130,200 BRN
EP-81	DISPENSER	1/2"	85'	130,200 BRN
EP-82	DISPENSER	1/2"	85'	130,200 BRN
EP-83	DISPENSER	1/2"	85'	130,200 BRN
EP-84	DISPENSER	1/2"	85'	130,200 BRN
EP-85	DISPENSER	1/2"	85'	130,200 BRN
EP-86	DISPENSER	1/2"	85'	130,200 BRN
EP-87	DISPENSER	1/2"	85'	130,200 BRN
EP-88	DISPENSER	1/2"	85'	130,200 BRN
EP-89	DISPENSER	1/2"	85'	130,200 BRN
EP-90	DISPENSER	1/2"	85'	130,200 BRN
EP-91	DISPENSER	1/2"	85'	130,200 BRN
EP-92	DISPENSER	1/2"	85'	130,200 BRN
EP-93	DISPENSER	1/2"	85'	130,200 BRN
EP-94	DISPENSER	1/2"	85'	130,200 BRN
EP-95	DISPENSER	1/2"	85'	130,200 BRN
EP-96	DISPENSER	1/2"	85'	130,200 BRN
EP-97	DISPENSER	1/2"	85'	130,200 BRN
EP-98	DISPENSER	1/2"	85'	130,200 BRN
EP-99	DISPENSER	1/2"	85'	130,200 BRN
EP-100	DISPENSER	1/2"	85'	130,200 BRN

NOTES:
1. PRESSURE REQUIRED AT FIRMETER 7 P.S.I.
2. USE SIZES ARE APPROXIMATE



GAS DISTRIBUTION DIAGRAM
NOT TO SCALE

PLUMBING FIXTURE SUPPLY CONNECTIONS

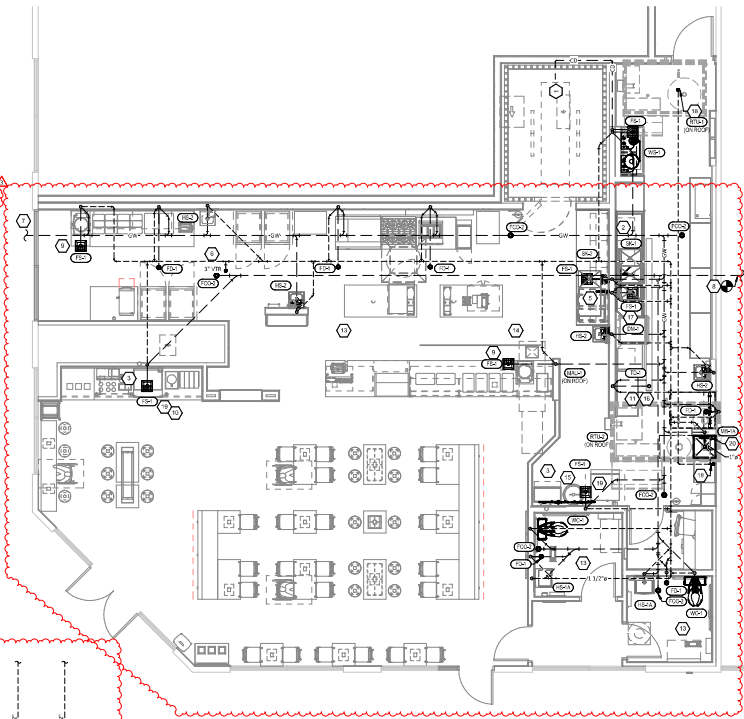
TAG	DESCRIPTION	CONNECTION	CW	HW	WSP	WSP	TOTAL	COUNT	TOTAL WSP
EP-1	DISPENSER	1/2"	0	0	0	0	0	1	0
EP-2	DISPENSER	1/2"	0	0	0	0	0	1	0
EP-3	DISPENSER	1/2"	0	0	0	0	0	1	0
EP-4	DISPENSER	1/2"	0	0	0	0	0	1	0
EP-5	DISPENSER	1/2"	0	0	0	0	0	1	0
EP-6	DISPENSER	1/2"	0	0	0	0	0	1	0
EP-7	DISPENSER	1/2"	0	0	0	0	0	1	0
EP-8	DISPENSER	1/2"	0	0	0	0	0	1	0
EP-9	DISPENSER	1/2"	0	0	0	0	0	1	0
EP-10	DISPENSER	1/2"	0	0	0	0	0	1	0
EP-11	DISPENSER	1/2"	0	0	0	0	0	1	0
EP-12	DISPENSER	1/2"	0	0	0	0	0	1	0
EP-13	DISPENSER	1/2"	0	0	0	0	0	1	0
EP-14	DISPENSER	1/2"	0	0	0	0	0	1	0
EP-15	DISPENSER	1/2"	0	0	0	0	0	1	0
EP-16	DISPENSER	1/2"	0	0	0	0	0	1	0
EP-17	DISPENSER	1/2"	0	0	0	0	0	1	0
EP-18	DISPENSER	1/2"	0	0	0	0	0	1	0
EP-19	DISPENSER	1/2"	0	0	0	0	0	1	0
EP-20	DISPENSER	1/2"	0	0	0	0	0	1	0
EP-21	DISPENSER	1/2"	0	0	0	0	0	1	0
EP-22	DISPENSER	1/2"	0	0	0	0	0	1	0
EP-23	DISPENSER	1/2"	0	0	0	0	0	1	0
EP-24	DISPENSER	1/2"	0	0	0	0	0	1	0
EP-25	DISPENSER	1/2"	0	0	0	0	0	1	0
EP-26	DISPENSER	1/2"	0	0	0	0	0	1	0
EP-27	DISPENSER	1/2"	0	0	0	0	0	1	0
EP-28	DISPENSER	1/2"	0	0	0	0	0	1	0
EP-29	DISPENSER	1/2"	0	0	0	0	0	1	0
EP-30	DISPENSER	1/2"	0	0	0	0	0	1	0
EP-31	DISPENSER	1/2"	0	0	0	0	0	1	0
EP-32	DISPENSER	1/2"	0	0	0	0	0	1	0
EP-33	DISPENSER	1/2"	0	0	0	0	0	1	0
EP-34	DISPENSER	1/2"	0	0	0	0	0	1	0
EP-35	DISPENSER	1/2"	0	0	0	0	0	1	0
EP-36	DISPENSER	1/2"	0	0	0	0	0	1	0
EP-37	DISPENSER	1/2"	0	0	0	0	0	1	0
EP-38	DISPENSER	1/2"	0	0	0	0	0	1	0
EP-39	DISPENSER	1/2"	0	0	0	0	0	1	0
EP-40	DISPENSER	1/2"	0	0	0	0	0	1	0
EP-41	DISPENSER	1/2"	0	0	0	0	0	1	0
EP-42	DISPENSER	1/2"	0	0	0	0	0	1	0
EP-43	DISPENSER	1/2"	0	0	0	0	0	1	0
EP-44	DISPENSER	1/2"	0	0	0	0	0	1	0
EP-45	DISPENSER	1/2"	0	0	0	0	0	1	0
EP-46	DISPENSER	1/2"	0	0	0	0	0	1	0
EP-47	DISPENSER	1/2"	0	0	0	0	0		

PLUMBING WASTE AND VENT PLAN NOTES

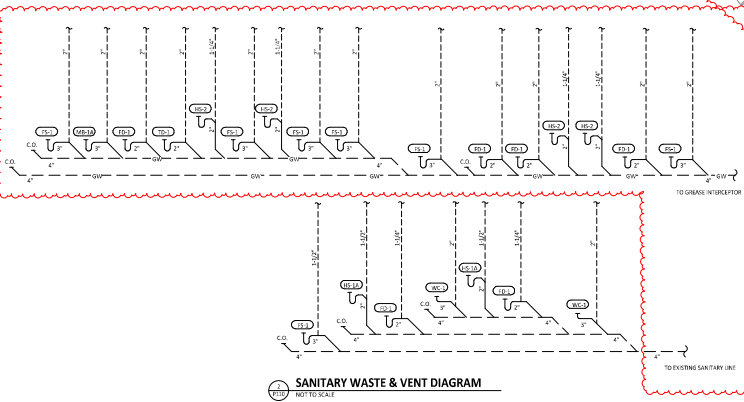
1. PROVIDE 3/4" CONDENSATE DRAIN FROM THE WALK-IN COOLER (EVAPORATOR) TO THE FLOOR SINK BELOW AS SHOWN. SLOPE CONDENSATE DRAIN A MINIMUM OF 1" PER FOOT. HOLE PUNCHED CONDENSATE DRAIN IN WALL IN COOLER AS HIGH AS POSSIBLE. CONCEAL DRAIN PIPING WITHIN FINISHED WALLS AS SHOWN. DISCHARGE THROUGH AN AIR GAP. MAKE FINAL CONNECTION TO MANHOLE OR DRAIN IN COOLER UNDER A DRAIN. CONDENSATE DRAIN SHOULD PENETRATE WALL AT POINT OF DISCHARGE AT 2" DIA.
2. PROVIDE DRAIN CONNECTIONS TO THE THREE COMPARTMENT SINK PER DETAIL 130P00.
3. COORDINATE ROUTING OF SODAS BUNDLES WITH COCA COLA TECHNICIAN FROM BAG IN BOX AREA TO EACH SODA REFRIGERATOR. IF FEASIBLE FROM THE WALLS DOWN TO THE DRAIN, ROUTE THE SODAS BUNDLES TO THE DRAIN WITHOUT COCA COLA TECHNICIAN'S BUREAU ROLES IN PLACE. PROVIDE NECESSARY SUPPORTS. SEE ARCHITECTURAL DRAWINGS FOR SODA BUNDLE TERMINATION LOCATION AND PROVIDE TERMINATION PER DETAIL 130P00.
4. NOT USED.
5. PROVIDE DRAIN BUNDLES FROM THE FOOD PREP SINK TO THE FLOOR SINK. PROVIDE AN AIR GAP AT THE DISCHARGE TO THE FLOOR SINK.
6. PROVIDE DRAIN PER DETAIL 130P00. 1/2" CONDENSATE DRAIN TO BE ROUTED TO SINK. REFER TO PFD FOR CONNECTIONS.
7. CONDENSATE DRAIN FROM FOOD TABLE TO THE FLOOR SINK. DRAIN THROUGH AN AIR GAP. PROVIDE 3/4" DIA. SINK FROM FOOD TABLE TO THE FLOOR SINK. DRAIN THROUGH AN AIR GAP.
8. PROVIDE INSULATED COVER DRAIN LINE FROM THE TEA TREAT DRAIN AND THE SODA MACHINE DRAIN TO THE FLOOR SINK. DRAIN THROUGH AN AIR GAP. HOLE TEA TREAT DRAIN AS HIGH AS POSSIBLE AND SECURE TO STRUCTURE BELOW THE UTILITY COUNTERTOP.
9. TRIM TRAP DRAIN PER DETAIL 130P00. MANUFACTURE TO INSTALL PER INSTRUCTIONS PRIOR TO INSTALLATION SO THAT GRATE FITS WITHOUT GAPS. INSTALL TRAP DRAIN WITH SLIGHT POSITIVE SLOPE TOWARD THE DRAIN. CONNECT ON TO MAIN STANDING WATER IN TRAP DRAIN.
10. NOT USED.
11. DO NOT PROVIDE WALL CLEANOUTS ON FILE OR FINISHER-VISIBLE WALLS. IF A WALL CLEANOUT IS REQUIRED ON THESE SURFACES COORDINATE THE EXACT LOCATION WITH CHIPOTLE'S CONSTRUCTION MANAGER.
12. PROVIDE INDIRECT WASTE AND CONDENSATE DRAINS FROM FIXTURES OTHER THAN KITCHEN SINKS CONCEALED IN THE WALL AS SHOWN IN DETAIL 130P00.
13. PROVIDE DRAIN FROM WATER FILTER BAY TO FLOOR SINK CONCEALED IN THE WALL AS SHOWN IN DETAIL 130P00.
14. PROVIDE TRAP DRAIN AS SHOWN IN DETAIL 130P00.
15. INSTALL DRAIN HOSE PLUMBING WITH DRAIN MACHINE FROM DRAIN MACHINE OUTLET TO FLOOR SINK. HOLE DRAIN HOSE TO THE WALL AND SECURE TO SCRAP SINK DRAIN TO MATCH WITH AN AIR GAP AT THE FLOOR SINK.
16. PROVIDE 3/4" CONDENSATE TRAP ON REFRIGERATOR DETAIL 130P00.
17. PROVIDE PVC DRAIN LINES FROM THE CE MACHINE TO THE FLOOR SINK PER THE MANUFACTURER'S INSTALLATION INSTRUCTIONS. PROVIDE A COOL APPROXIMATE AIR GAP AT THE DISCHARGE TO THE FLOOR SINK. SECURE TO MAKE DRAIN PIPES TO THE BOTTOM OF THE ICE MAKER.
18. PROVIDE 1" CONDENSATE DRAIN DOWN TO HOP SINK (M-J-A) AS SHOWN. PROVIDE WITH AN AIR GAP. CONNECT TO THE SEWER SYSTEM. CONTRACTOR TO PROVIDE TRAP SIZE, LOCATION, AND ROUTING METHOD TO SINK UNITS PRIOR TO START OR ANY WORK. CONNECTION PLAN TO BE REVIEWED WITH PROJECT PLUMBING ENGINEER FOR APPROVAL PRIOR TO IMPLEMENTATION.

PLUMBING FIXTURE WASTE CONNECTIONS

TAG	DESCRIPTION	CONNECTION SIZE	WASTE	DFU	COUNT	TOTAL DFU
SW-1	DRINK WATER MACHINE (SHOWER OUTLET)	3/4"	W	1	1	1
FSD-1	FLOOR SINK	2"	W	1	1	1
FSD-2	FLOOR SINK	2"	W	1	1	1
FSD-3	FLOOR SINK	2"	W	1	1	1
WC-1	WATER CLOSURE	2"	W	1	1	1
WC-2	WATER CLOSURE	2"	W	1	1	1
WC-3	WATER CLOSURE	2"	W	1	1	1
WC-4	WATER CLOSURE	2"	W	1	1	1
WC-5	WATER CLOSURE	2"	W	1	1	1
WC-6	WATER CLOSURE	2"	W	1	1	1
WC-7	WATER CLOSURE	2"	W	1	1	1
WC-8	WATER CLOSURE	2"	W	1	1	1
WC-9	WATER CLOSURE	2"	W	1	1	1
WC-10	WATER CLOSURE	2"	W	1	1	1
WC-11	WATER CLOSURE	2"	W	1	1	1
WC-12	WATER CLOSURE	2"	W	1	1	1
WC-13	WATER CLOSURE	2"	W	1	1	1
WC-14	WATER CLOSURE	2"	W	1	1	1
WC-15	WATER CLOSURE	2"	W	1	1	1
WC-16	WATER CLOSURE	2"	W	1	1	1
WC-17	WATER CLOSURE	2"	W	1	1	1
WC-18	WATER CLOSURE	2"	W	1	1	1
WC-19	WATER CLOSURE	2"	W	1	1	1
WC-20	WATER CLOSURE	2"	W	1	1	1
WC-21	WATER CLOSURE	2"	W	1	1	1
WC-22	WATER CLOSURE	2"	W	1	1	1
WC-23	WATER CLOSURE	2"	W	1	1	1
WC-24	WATER CLOSURE	2"	W	1	1	1
WC-25	WATER CLOSURE	2"	W	1	1	1
WC-26	WATER CLOSURE	2"	W	1	1	1
WC-27	WATER CLOSURE	2"	W	1	1	1
WC-28	WATER CLOSURE	2"	W	1	1	1
WC-29	WATER CLOSURE	2"	W	1	1	1
WC-30	WATER CLOSURE	2"	W	1	1	1
WC-31	WATER CLOSURE	2"	W	1	1	1
WC-32	WATER CLOSURE	2"	W	1	1	1
WC-33	WATER CLOSURE	2"	W	1	1	1
WC-34	WATER CLOSURE	2"	W	1	1	1
WC-35	WATER CLOSURE	2"	W	1	1	1
WC-36	WATER CLOSURE	2"	W	1	1	1
WC-37	WATER CLOSURE	2"	W	1	1	1
WC-38	WATER CLOSURE	2"	W	1	1	1
WC-39	WATER CLOSURE	2"	W	1	1	1
WC-40	WATER CLOSURE	2"	W	1	1	1
WC-41	WATER CLOSURE	2"	W	1	1	1
WC-42	WATER CLOSURE	2"	W	1	1	1
WC-43	WATER CLOSURE	2"	W	1	1	1
WC-44	WATER CLOSURE	2"	W	1	1	1
WC-45	WATER CLOSURE	2"	W	1	1	1
WC-46	WATER CLOSURE	2"	W	1	1	1
WC-47	WATER CLOSURE	2"	W	1	1	1
WC-48	WATER CLOSURE	2"	W	1	1	1
WC-49	WATER CLOSURE	2"	W	1	1	1
WC-50	WATER CLOSURE	2"	W	1	1	1
WC-51	WATER CLOSURE	2"	W	1	1	1
WC-52	WATER CLOSURE	2"	W	1	1	1
WC-53	WATER CLOSURE	2"	W	1	1	1
WC-54	WATER CLOSURE	2"	W	1	1	1
WC-55	WATER CLOSURE	2"	W	1	1	1
WC-56	WATER CLOSURE	2"	W	1	1	1
WC-57	WATER CLOSURE	2"	W	1	1	1
WC-58	WATER CLOSURE	2"	W	1	1	1
WC-59	WATER CLOSURE	2"	W	1	1	1
WC-60	WATER CLOSURE	2"	W	1	1	1
WC-61	WATER CLOSURE	2"	W	1	1	1
WC-62	WATER CLOSURE	2"	W	1	1	1
WC-63	WATER CLOSURE	2"	W	1	1	1
WC-64	WATER CLOSURE	2"	W	1	1	1
WC-65	WATER CLOSURE	2"	W	1	1	1
WC-66	WATER CLOSURE	2"	W	1	1	1
WC-67	WATER CLOSURE	2"	W	1	1	1
WC-68	WATER CLOSURE	2"	W	1	1	1
WC-69	WATER CLOSURE	2"	W	1	1	1
WC-70	WATER CLOSURE	2"	W	1	1	1
WC-71	WATER CLOSURE	2"	W	1	1	1
WC-72	WATER CLOSURE	2"	W	1	1	1



SANITARY WASTE & VENT PLAN
SCALE: 1/8" = 1'-0"



SANITARY WASTE & VENT DIAGRAM
NOT TO SCALE

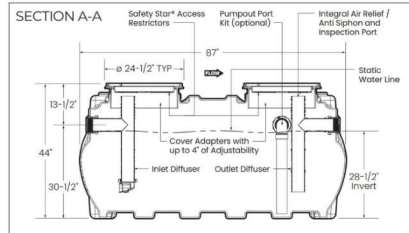


STORE NO.: 5234
GULFSTATE CENTER MALL
HOUSTON, TX 77057

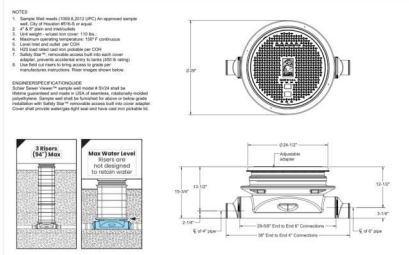
DATE: 04/26/2024
PROJECT: GULFSTATE CENTER MALL
DRAWING: PLUMBING WASTE & VENT

DATE: 04/26/2024
PROJECT: GULFSTATE CENTER MALL
DRAWING: PLUMBING WASTE & VENT

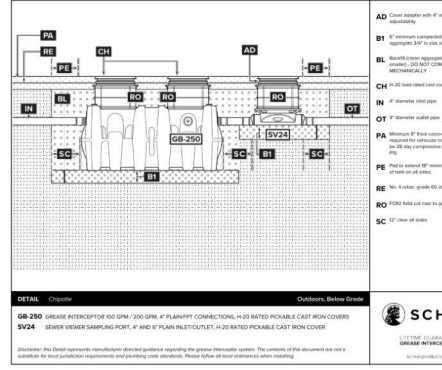
PLUMBING WASTE & VENT
P110



	MODEL NUMBER	DESCRIPTION
	GB-250	100/200 GPM Polyethylene Grease Interceptor
<small>1000 Woodmont Road Downers Grove, IL 60515 630.291.2882 schierproducts.com</small>		



	MODEL NUMBER	PART NUMBER
	SV24	888-681-81
<small>1000 Woodmont Road Downers Grove, IL 60515 630.291.2882 schierproducts.com</small>		



DETAIL *Chippole* *Outlets, Before Grate*

GB-250 GREASE INTERCEPTOR 100 GPM / 200 GPM, 4" PLUMBING CONNECTIONS IN 12" RATED PICKABLE CAST IRON COVERS
SV24 SEWER VIEWER SAMPLING PORT, 4" AND 6" PLAIN INLET/OUTLET, 14-20 RATED PICKABLE CAST IRON COVER

Disclaimer: This detail represents manufacturer's general guidelines regarding the general installation system. The contents of this document are not a substitute for local jurisdiction requirements and plumbing code standards. Please follow all local ordinances when installing.



STORE NO.: 5234
 GULFEDGE CENTER MALL
 HOUSTON, TX 77057

DATE	BY	DESCRIPTION
02/16/2024	JB/MT	
02/16/2024	JB/ST	

NO.	DATE	DESCRIPTION
1	02-13-24	FOR BULLETIN

DATE PLOTTED: 02/16/24 10:51 AM
 PLOT SCALE: 1"=1'-0"

PLUMBING DETAILS
 (REFERENCE ONLY)
P702

LIGHTING CONTROL PANEL SCHEDULE: LCP

RELAY	PANEL	CIRCUIT	AREA SERVED	CONTROL	TIME ON	TIME OFF	DRIVER CONTROL	NOTES
R1	A	32	WITCHEN A	TIMECLOCK	7:00:00 AM	12:00:00 AM	N/A	SINGLE POLE (NC)
R2	A	33	WITCHEN B	TIMECLOCK	7:00:00 AM	12:00:00 AM	N/A	SINGLE POLE (NC)
R3	A	34	SPRINK	TIMECLOCK	7:00:00 AM	12:00:00 AM	N/A	SINGLE POLE (NC)
R4	A	35	DINING ROOM A	TIMECLOCK	3:00:00 AM	12:00:00 AM	N/A	SINGLE POLE (NC)
R5	A	36	DINING ROOM B	TIMECLOCK	3:00:00 AM	12:00:00 AM	N/A	SINGLE POLE (NC)
R6	A	37	DINING ROOM C	TIMECLOCK	3:00:00 AM	12:00:00 AM	N/A	SINGLE POLE (NC)
R7	A	38	RESTROOM (MENS) 1-2	TIMECLOCK	7:00:00 AM	12:00:00 AM	N/A	SINGLE POLE (NC)
R8	A	39	RESTROOM (WOMENS) 1-2	TIMECLOCK	7:00:00 AM	12:00:00 AM	N/A	SINGLE POLE (NC)
R9	A	40	EXIT LIGHTS/STAIRS	TIMECLOCK	3:00:00 AM	12:00:00 AM	N/A	SINGLE POLE (NC)

A. DUPLICATE PANEL SCHEDULE AND PERMANENTLY INSTALL WITHIN THE LIGHTING CONTROL PANEL.

LIGHTING CONTROL COMPONENTS SCHEDULE

LCP	DESCRIPTION	QUANTITY	FURNISHED BY	INSTALLED BY	MANUFACTURER	MODEL	BASE FOR DESIGN	REMARKS
SC	WALL MOUNTED OVERHEAD SWITCH	1	TLS	GC	QUALITY	MODEL #P	RELAY PANEL FOR DINING ROOMS WITH FLUOROPOLYIMIDE AND DIGITAL TIME CLOCK	SEE LIGHTING CONTROL SYSTEM FOR SWITCH CONFIGURATION.
SD	WALL MOUNTED DIMMER SWITCH	2	TLS	GC	COOPER	SALUDIP W	SLIGHT DIMMER COMPATIBLE WITH LED 300W LED LIGHTING USE ONLY. 0-10V DIMMING LIGHTS FOLDER AT THIS DIMMER SETTING THEN USE SMALL DIMMER FUNCTION (LED 300W DIMMER) FOR ADJUSTMENT.	
SC	WALL MOUNTED ONE VOLTAGE OCCUPANCY SENSOR	3	TLS	GC	ABBELL	01075 L1 W/WH	WHITE CASE TECHNOLOGY SENSITIVE RELAY WITH 1 BUTTON AND KEYPAD MESSING.	

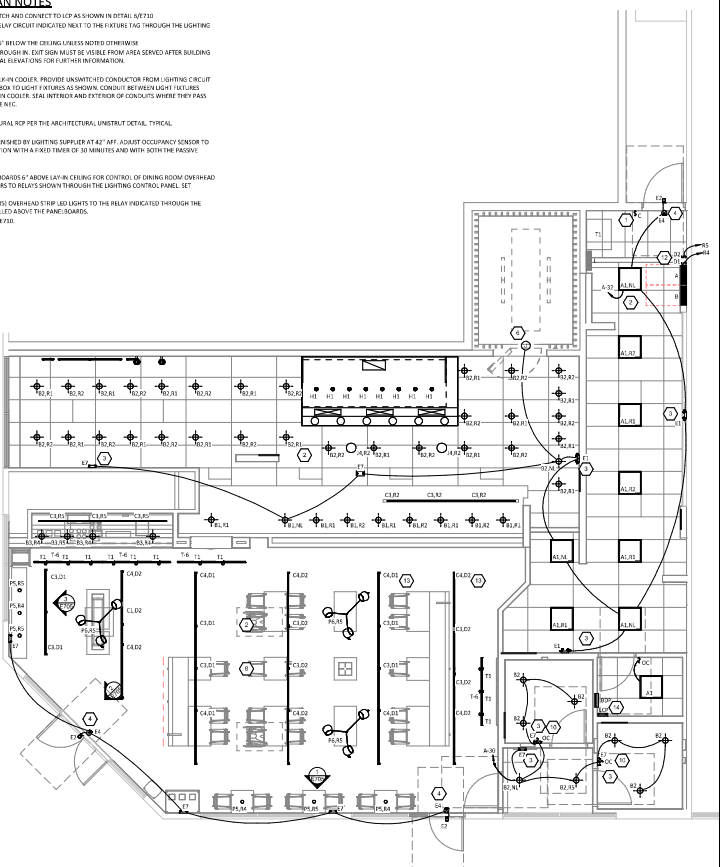
LIGHTING FIXTURE SCHEDULE

TAG	COUNT	DESCRIPTION	MOUNTING	VOLTAGE	WATTS	FURNISHED BY	INSTALLED BY	MANUFACTURER	MODEL	BASE FOR DESIGN	LAMP	REMARKS
R1	1	200 LUMEN LED PROTRUSOR	CEILING	120V	30W	TLS	GC	NORA LIGHTING	NORA LED 200 W	INTERNAL BOOK LED	COMPATIBLE WITH 200 W DIMMING FACTORY LOCKED TO 300K	
R2	30	RECESSED DINING LIGHT	CEILING	120V	30W	TLS	GC	NORA LIGHTING	NORA LED 30 W	INTERNAL BOOK LED	LED TRIM (FINISHED WITH 60/40 SOCKET ADAPTER)	
R3	4	RECESSED DINING LIGHT W/ BLACK LED TRIM	CEILING	120V	30W	TLS	GC	NORA LIGHTING	NORA LED 30 W	INTERNAL BOOK LED	BLACK LED TRIM (FINISHED WITH 60/40 SOCKET ADAPTER)	
CO	2	LOW PROFILE LED - 1 FT	SURFACE	120V	5W	TLS	GC	HEXA LIGHTING	ELLED-02/5W	INTERNAL BOOK LED	FURNISHED WITH COVER, CONNECTORS, AND ONE HARDBARE BOX OR CONDUIT/LAL PER SECTION	
C1	1	LOW PROFILE LED - 3 FT	SURFACE	120V	9W	TLS	GC	HEXA LIGHTING	ELLED-03/9W	INTERNAL BOOK LED	FURNISHED WITH COVER, CONNECTORS, AND ONE HARDBARE BOX OR CONDUIT/LAL PER SECTION	
C2	2	LOW PROFILE LED - 3 FT	SURFACE	120V	32 W	TLS	GC	HEXA LIGHTING	ELLED-03/32W	INTERNAL BOOK LED	FURNISHED WITH COVER, CONNECTORS, AND ONE HARDBARE BOX OR CONDUIT/LAL PER SECTION	
C3	30	LOW PROFILE LED - 4 FT	SURFACE	120V	35 W	TLS	GC	HEXA LIGHTING	ELLED-04/35W	INTERNAL BOOK LED	FURNISHED WITH COVER, CONNECTORS, AND ONE HARDBARE BOX OR CONDUIT/LAL PER SECTION	
C4	30	LOW PROFILE LED - 5 FT	SURFACE	120V	38 W	TLS	GC	HEXA LIGHTING	ELLED-05/38W	INTERNAL BOOK LED	FURNISHED WITH COVER, CONNECTORS, AND ONE HARDBARE BOX OR CONDUIT/LAL PER SECTION	
E1	3	EMERGENCY LIGHT (RECESSED)	VARIOUS	120V	2W	TLS	GC	EXTENOX	LED-50	INTERNAL LED	30 W W/RE BATTERY BACKUP	
E2	1	EMERGENCY LIGHT (RECESSED)	VARIOUS	4V	1W	TLS	GC	EXTENOX	MODEL: S-6P	INTERNAL LED	LOW VOLTAGE REMOTE EMERGENCY LIGHT POWERED BY BATTERY BACKUP WITH 90 MINUTE RUN TIME	
E4	1	WHITE EXIT SIGN WITH EMERGENCY LIGHT (RECESSED)	VARIOUS	120V	2W	TLS	GC	EXTENOX	CEED-3-10R	INTERNAL LED	30 W W/RE BATTERY BACKUP WITH VISIBLE EMERGENCY LIGHT - REMOTE HEAD CAPABLE	
E6	4	EMERGENCY LIGHT (RECESSED)	VARIOUS	120V	2W	TLS	GC	EXTENOX	LED-50	INTERNAL LED	30 W W/RE BATTERY BACKUP	
H1	8	TRACK PROOF HOOD LIGHT	SURFACE	120V	30W	TLS	GC	FURNISHED BY HOOD	100 FT TRACKING SYSTEM	INTERNAL LED	INSTALL WITH TRACKING SYSTEM SEPARATELY BY LIGHTING SUPPLIER	
P1	1	DECORATIVE PENDANT	PENDANT	120V	9W	TLS	GC	DANKOFF	BLE-CF120-9W-300-01	INTERNAL LED	GREEN (GLASS) WITH BLACK (CERAMIC) BLACK CORD, AND 18" CABLE LENGTH	
P2	1	DECORATIVE PENDANT	PENDANT	120V	9W	TLS	GC	WALLITE	WLT-100-9W-300-01	INTERNAL LED	REQUIRE CORD LENGTH FOR MOUNTING HEIGHT CALLED FOR IN ARCHITECTURAL DRAWINGS	
P3	1	DECORATIVE DINING ROOM PENDANT	PENDANT	120V	30W	TLS	GC	DANKOFF	BLE-CF120-30W-300-01	INTERNAL LED	REQUIRE CORD LENGTH FOR MOUNTING HEIGHT CALLED FOR IN ARCHITECTURAL DRAWINGS	
T1	11	TRACK HEAD	TRACK	120V	30W	TLS	GC	ALNO	8005_30K-300CF120M-WLS-IL	INTERNAL LED	BLACK (OUTDOOR TRACK HEAD) W/ UNIVERSAL LED TRACK ADAPTER AND WIDE (GOOD BEAM) BEAM CIRCUT. BLACK FINISH. FURNISH WITH CONNECTORS TO ACROSS (BRAND) BROWN ON PLANS. TRIM AS REQUIRED FOR FINISHING DRAWING.	
T2	4	TRACK (3 FT)	SURFACE	120V	0W	TLS	GC	ALNO	T-6FT-IL	N/A		

A. SEE THE ARCHITECTURAL REFLECTED CEILING PLAN FOR EXACT LIGHT LOCATIONS.
 B. SEE THE ARCHITECTURAL LIGHTING PLAN FOR RELAY CONTROL CONNECTIONS.

ELECTRICAL LIGHTING PLAN NOTES

1. INSTALL WALL MOUNTED LIGHTING CONTROL SWITCH AND CONNECT TO LCP AS SHOWN IN DETAIL A.17.10.
2. FOR UNHUNG LIGHT FIXTURES, CONNECT TO RELAY CIRCUIT INDICATED NEXT TO THE FIXTURE TAG THROUGH THE LIGHTING CONTROL PANEL (LCP) UNLESS NOTED OTHERWISE.
3. WALL MOUNT THE EMERGENCY LIGHT FIXTURE AT 4' BELOW THE CEILING UNLESS NOTED OTHERWISE.
4. VERIFY MOUNTING HEIGHT OF EXIT SIGN PRIOR TO ORDERING. EXIT SIGN MUST BE VISIBLE FROM AREA SERVED AFTER BUILDING SYSTEMS WORK BEING INSTALLED. SEE ARCHITECTURAL DRAWINGS FOR LIFT-UP INFORMATION.
5. NOT USED.
6. INSTALL LIGHT FIXTURES FURNISHED WITH THE WALK-IN COOLER. PROVIDE UNUSUAL W/TO CONDUCTOR FROM LIGHTING CIRCUIT TO WALK-IN COOLER LIGHTING BOX AND FROM BOX TO LIGHT FIXTURES AS SHOWN. CONDUIT BETWEEN LIGHT FIXTURES SHALL BE ROUTED ON THE INTERIOR OF THE WALK-IN COOLER. SEAL INTERIOR AND EXTERIOR OF CONDUITS WHERE THEY PASS THROUGH THE WALK-IN COOLER ENVELOPE PER THE NEC.
7. NOT USED.
8. PROVIDE UNUSUAL AS SHOWN ON THE ARCHITECTURAL ROP PER THE ARCHITECTURAL UNUSUAL DETAIL TYPICAL.
9. NOT USED.
10. INSTALL WALL MOUNTED OCCUPANCY SENSOR FURNISHED BY LIGHTING SUPPLIER AT 42" AFF. ADJUST OCCUPANCY SENSOR TO PROVIDE AUTOMATIC ON/OFF OPERATION WITH A FIXED TIMER OF 30 MINUTES AND WITH BOTH THE PASSIVE INFRARED AND ULTRASONIC SENSORS ENABLED.
11. NOT USED.
12. INSTALL WALL MOUNTED DIMMER ABOVE HANDBOARDS 6" ABOVE LATH CEILING FOR CONTROL OF DINING ROOM OVERHEAD STRIP LED AND PENDANT LIGHTS. CONNECT DIMMERS TO RELAYS SHOWN THROUGH THE LIGHTING CONTROL PANEL SET DIMMERS AT 50%.
13. COMPLETE DINING ROOM RELAY CIRCUITS AND AND/OR OVERHEAD STRIP LED LIGHTS TO THE RELAY INDICATED THROUGH THE CORRESPONDING WALL MOUNTED DIMMER INSTALL LED ABOVE THE PANE/BOARDS.
14. INSTALL LIGHTING CONTROL SYSTEM PER A.17.10.10.



LIGHTING FLOOR PLAN
 0/4" = 1/8"



STORE NO.: 5234
 GULFSTATE CENTER MALL
 HOUSTON, TX 77057

DATE	DESCRIPTION
04/26/2024	ISSUED SET
04/26/2024	REVISED

DATE	DESCRIPTION
04/26/2024	ISSUED SET
04/26/2024	REVISED

DATE: 2024.04.26
 TIME: 10:58 AM
 PROJECT: 20240513
 SHEET: 53 OF 53

ELECTRICAL LIGHTING PLAN

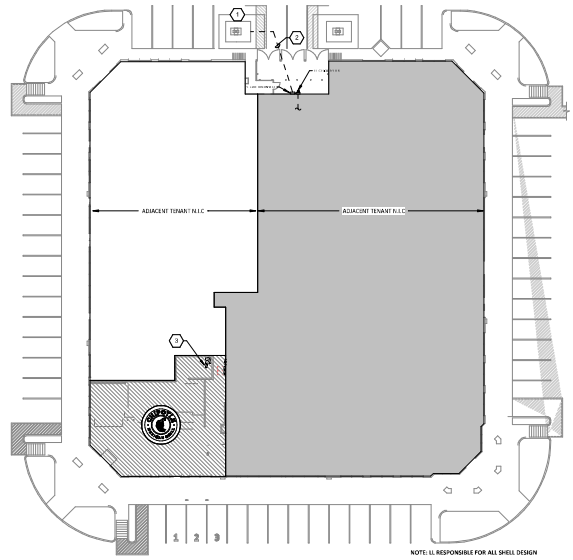
E100

ELECTRICAL POWER PLAN NOTES

1. APPROXIMATE LOCATION OF EXISTING TRANSFORMER. COORDINATE PATH OF CONDUIT TO NEW METER AND DISCONNECT WITH LANDINGS.

2. TUBING TO PROVIDE CONDUIT TO NEW METERS AND DISCONNECT.

3. APPROXIMATE LOCATION OF EXISTING PANEL.



POWER SITE PLAN
11/20/24



GPD Group Professional Corporation
1401 West 19th Street, Suite 2001
Houston, Texas 77058
Tel: 281.460.1111
Fax: 281.460.1112
www.gpdgroup.com



DATE: 08/18/24
THIS DRAWING IS AN INSTRUMENT OF SERVICE PROVIDED TO YOU BY THE SIGNATURE OF BENJAMIN P. SCHMITT, LICENSE NO. 15438, ELECTRICAL ENGINEER, STATE OF TEXAS. YOU AGREE TO HOLD GPD GROUP PROFESSIONAL CORPORATION AND BENJAMIN P. SCHMITT HARMLESS FROM AND AGAINST ALL CLAIMS, DAMAGES, LOSSES AND EXPENSES, INCLUDING REASONABLE ATTORNEY'S FEES, ARISING OUT OF OR RESULTING FROM THE USE OF THIS DRAWING.



CHIPOTLE MEXICAN GRILL, INC.
10000 WESTHELL DRIVE
HOUSTON, TEXAS 77036
TEL: 281.460.1111
WWW.CHIPOTLE.COM

STORE NO.: 5234
GULFEDGE CENTER MALL
710 GULFEDGE CENTER MALL
HOUSTON, TX 77087

Rev	Date	Description
1	07/20/24	CITY COMMENTS

Drawn	Checked
ECD	ESD

DATE PLOTTED: 2024.08.13 10:14 AM
JOB NO: 240813.01

ELECTRICAL SITE POWER PLAN

E115