

HOOD INFORMATION - Job#3884739

HOOD NO.	TAG	MODEL	LENGTH	MAX. COOKING TEMP.	EXHAUST PLENUM RISER(S)							HOOD CONSTRUCTION	HOOD CONFIG.		
					TOTAL EXH. CFM	WIDTH	LENG.	HEIGHT	DIA.	CFM	VEL.		S.P.	END TO END	ROW
1	GRILLS	5424 ND-2	8' 9"	600 Deg.	1662			4"	14"	1662	1555	-0.594"	430 SS Where Exposed	LEFT	ALONE
2	FRYERS	5424 ND-2	9' 9"	600 Deg.	1852			4"	14"	1852	1732	-0.705"	430 SS Where Exposed	RIGHT	ALONE

HOOD INFORMATION

HOOD NO.	TAG	FILTER(S)					LIGHT(S)			UTILITY CABINET(S)				FIRE SYSTEM PIPING	HOOD HANGING WGT		
		TYPE	QTY	HEIGHT	LENGTH	EFFICIENCY @ 7 MICRONS	QTY	TYPE	WIRE GUARD	LOCATION	SIZE	FIRE SYSTEM TYPE	SIZE			ELECTRICAL MODEL #	SWITCHES QUANTITY
1	GRILLS	Captrate Solo Filter	6	20"	16"	85% See Filter Spec.	3	12" x 12" LED	NO	Left	12"x54"x24"	Ansul R102	3.0/3.0	DCV-2011	1 Light 1 Fan	YES	566 LBS
2	FRYERS	Captrate Solo Filter	7	20"	16"	85% See Filter Spec.	3	12" x 12" LED	NO							YES	445 LBS

HOOD OPTIONS

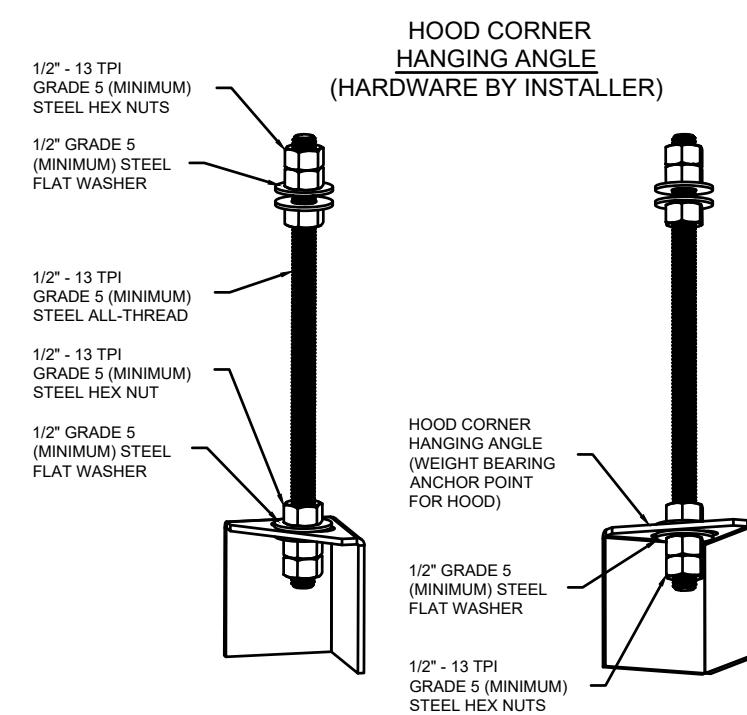
HOOD NO.	TAG	OPTION
1	GRILLS	FIELD WRAPPER 18.00" High Front, Left BACKSPLASH 80.00" High X 234.00" Long 430 SS Vertical LEFT QUARTER END PANEL 23" Top Width, 0" Bottom Width, 23" High 430 SS
2	FRYERS	FIELD WRAPPER 18.00" High Front, Right RIGHT QUARTER END PANEL 23" Top Width, 0" Bottom Width, 23" High 430 SS

BALANCING NOTES:

Exhaust Requirements
100-105% OF DESIGN PER HOOD
MEASURED AT THE EXHAUST FILTER WHILE THE FILTER IS INSTALLED

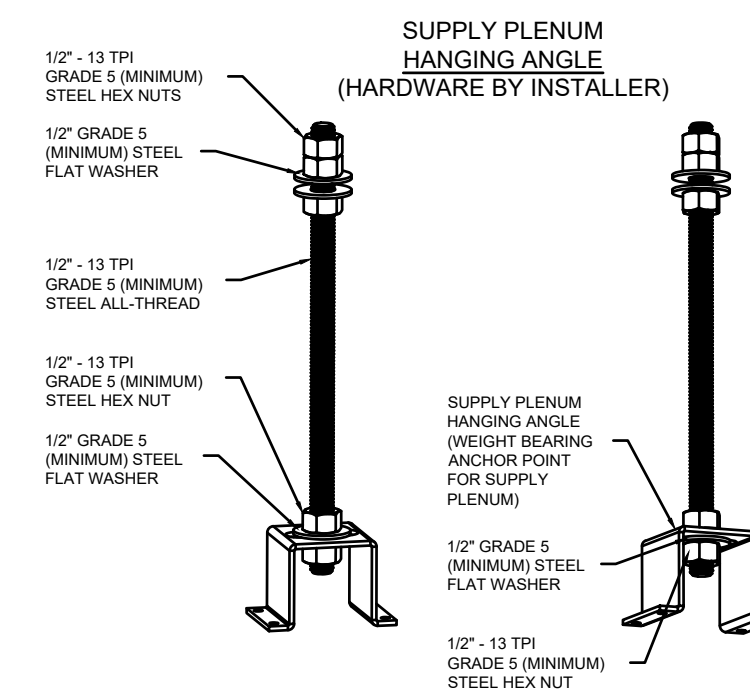
Supply Requirements
95-100% OF DESIGN PER SUPPLY PLENUM
MEASURED AT THE BOTTOM FACE OF THE PERFORATION (DISCHARGE POINT)

HANGING BRACKET DETAIL



ASSEMBLY INSTRUCTIONS

HANGING ANGLE MUST BE SUPPORTED WITH 1/2" - 13 TPI GRADE 5 (MINIMUM) ALL-THREAD. SANDWICH HANGING ANGLES AND CEILING ANCHOR POINTS WITH 1/2" GRADE 5 (MINIMUM) STEEL FLAT WASHERS AND 1/2" - 13 TPI GRADE 5 (MINIMUM) HEX NUTS AS SHOWN. MUST USE DOUBLED HEX NUT CONFIGURATION BENEATH HOOD HANGING ANGLES AND ABOVE CEILING ANCHORS. MAINTAIN 1/4" OF EXPOSED THREADS BENEATH BOTTOM HEX NUT. TORQUE ALL HEX NUTS TO 57 FT-LBS.



ASSEMBLY INSTRUCTIONS

HANGING ANGLE MUST BE SUPPORTED WITH 1/2" - 13 TPI GRADE 5 (MINIMUM) ALL-THREAD. SANDWICH HANGING ANGLES AND CEILING ANCHOR POINTS WITH 1/2" GRADE 5 (MINIMUM) STEEL FLAT WASHERS AND 1/2" - 13 TPI GRADE 5 (MINIMUM) HEX NUTS AS SHOWN. MUST USE DOUBLED HEX NUT CONFIGURATION ABOVE CEILING ANCHORS. SINGLE HEX NUT BENEATH HANGING ANGLE IS ACCEPTABLE FOR PSP HANGING ANGLES. MAINTAIN 1/4" OF EXPOSED THREADS BENEATH BOTTOM HEX NUT. TORQUE ALL HEX NUTS TO 57 FT-LBS.

SCOPE OF WORK

HOOD(S): PROVIDED BY OWNER. INSTALLED BY GC.
FIRE SYSTEM(S): PROVIDED & INSTALLED BY OWNER.
EXHAUST FAN(S): PROVIDED BY OWNER. INSTALLED BY GC.

ELECTRICAL CONTROL(S): PROVIDED BY OWNER. INSTALLED BY GC.
GC IS RESPONSIBLE FOR COMPLETE START-UP OF EXHAUST FANS AND

GREASE DUCT SPECIFICATION

Furnish single-wall, factory built, grease duct for use with Type I kitchen hoods, which conforms to the requirements of NFPA-96. Products shall be ETL listed to UL-1978 for venting air and grease vapors from commercial cooking operations as described in NFPA-96. The duct wall shall be constructed of .036 thick type 430 stainless steel and be available in diameters 8" through 24". All supports, fan adapters, hood connections, fittings and expansion joints required to install grease duct shall be included. Roof penetrations shall comply with listed clearance to combustibles, see "Clearance to Combustibles" guide for details. The grease duct will terminate at the fan adapter plate, will be fully welded to the fan adapter plate and the fan adapter plate will be fastened to the curb using a suitably sized fastener provided by others; see page 12 of the "Installation, Operation and Maintenance Manual" for details. Grease duct joints shall be held together by means of formed vee clamps and sealed with 3M Fire Barrier 2000+. Screws used to secure the vee clamps shall be of the hex-head type with flanged stops and tapered "lead in" threads for easy starting. Nuts shall be retained by means of a free-floating cage to allow easy alignment. Single-Wall Grease Duct shall be installed in accordance with the manufacturer's "Installation, Operation and Maintenance Manual", ETL listing and state and local codes. Grease duct installed outside of the building shall be protected against accidental damage or vandalism. Support vertically installed grease duct from the building structure using rigid structural supports. Anchor supports to the structure by welding or bolting steel expansion anchors or concrete inserts. Support horizontally installed grease duct from the building structure using above method or use Duct Mate, Wire Rope & Clutchers, part numbers WR20 & CL20. 1/2" Threaded rod and saddles may also be used for the support of horizontal grease duct. Fans shall be supported independently from the grease duct sections. Protect grease duct from twisting or movement caused by fan torque or vibration.

REVISIONS

DESCRIPTION	DATE

CAPTIVE

MARYLAND OFFICE

2221 Kansas Ave. Silver Spring, MD. 20910 PHONE: (800) 988-0861 FAX: (919) 227-5931 EMAIL: reg32@captive.com

Five Guys
Pooler, GA

DATE: 6/27/19

DWG.#: N/A

DRAWN BY: SDC-32

SCALE: NOT TO SCALE

MASTER DRAWING

SHEET NO.
1

FOR REFERENCE ONLY

ARCHITECT OF RECORD

CONSULTANT

FIVE GUYS POOLER, GA.
2120 POOLER PARKWAY
POOLER, GA 31312

PROJECT NUMBER: 2021236.29

These drawings and specifications contain material owned or licensed by Five Guys and shall not be copied or reproduced without written authorization.

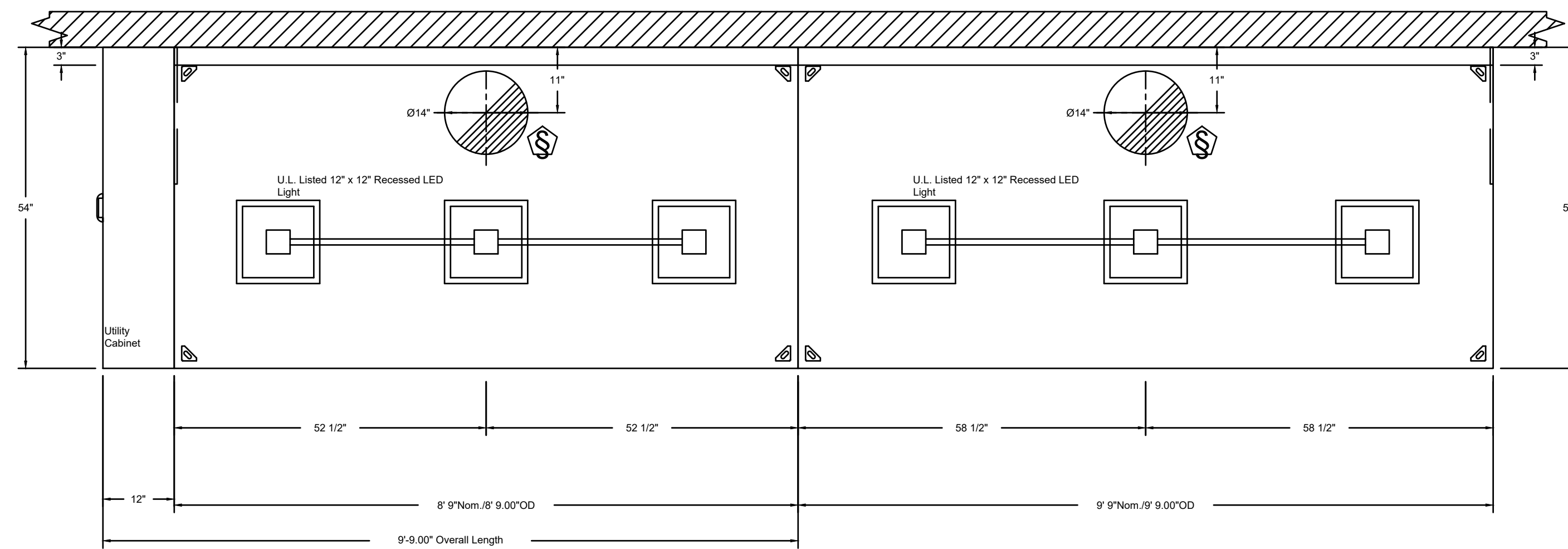
ISSUE DATE		
REV	ISSUE	DATE
	PERMIT	04.27.2022
1	REVISION 1	11.05.2022
2	GREEN SET/REV 2	05.10.2023

SHEET TITLE

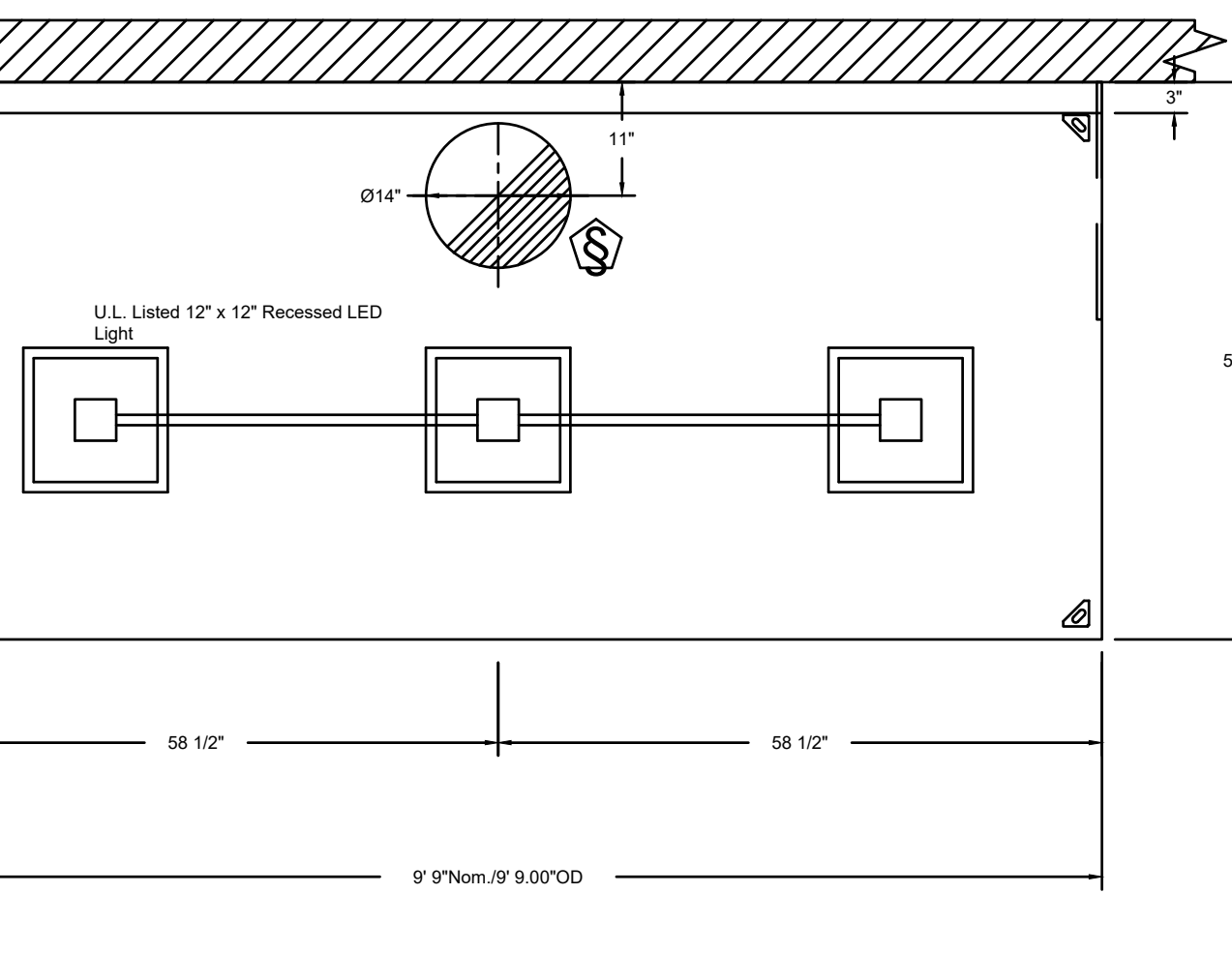
HOOD DRAWINGS

SHEET NUMBER

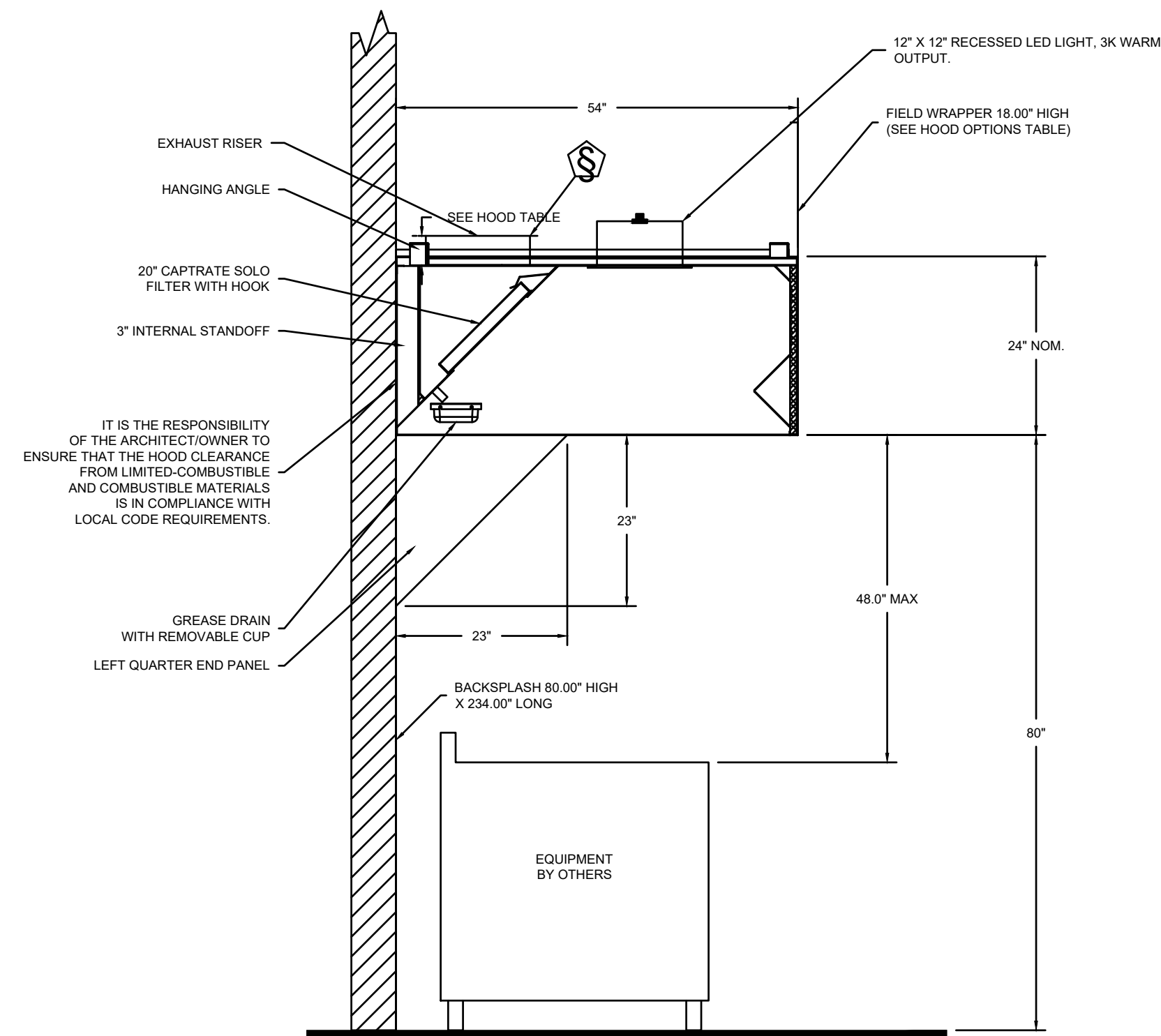
MH1.0



PLAN VIEW - Hood #1 (GRILLS)
8' 9.00" LONG 5424ND-2

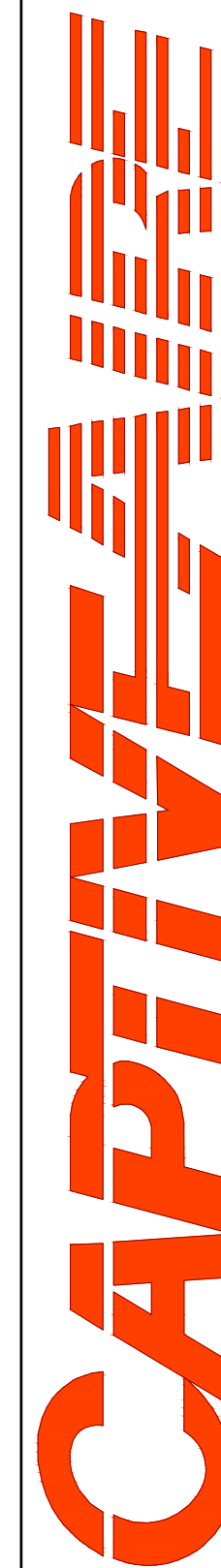


PLAN VIEW - Hood #2 (FRYERS)
9' 9.00" LONG 5424ND-2



SECTION VIEW - MODEL 5424ND-2
HOOD - #1 & #2

REVISIONS	
DESCRIPTION	DATE



2221 Kansas Ave. Silver Spring, MD, 20910 PHONE: (800) 988-0881 FAX: (919) 227-5931 EMAIL: reg32@captiveare.com

Five Guys
Pooler, GA

DATE: 6/27/19

DWG.#:
N/A

DRAWN BY: SDC-32

SCALE:
NOT TO SCALE

MASTER DRAWING

SHEET NO.
2

FOR REFERENCE ONLY

ARCHITECT OF RECORD

CONSULTANT

FIVE GUYS POOLER, GA.
2120 POOLER PARKWAY
POOLER, GA 31312

PROJECT NUMBER: 2021236.29

These drawings and specifications contain material owned or licensed by Five Guys and shall not be copied or reproduced without written authorization.

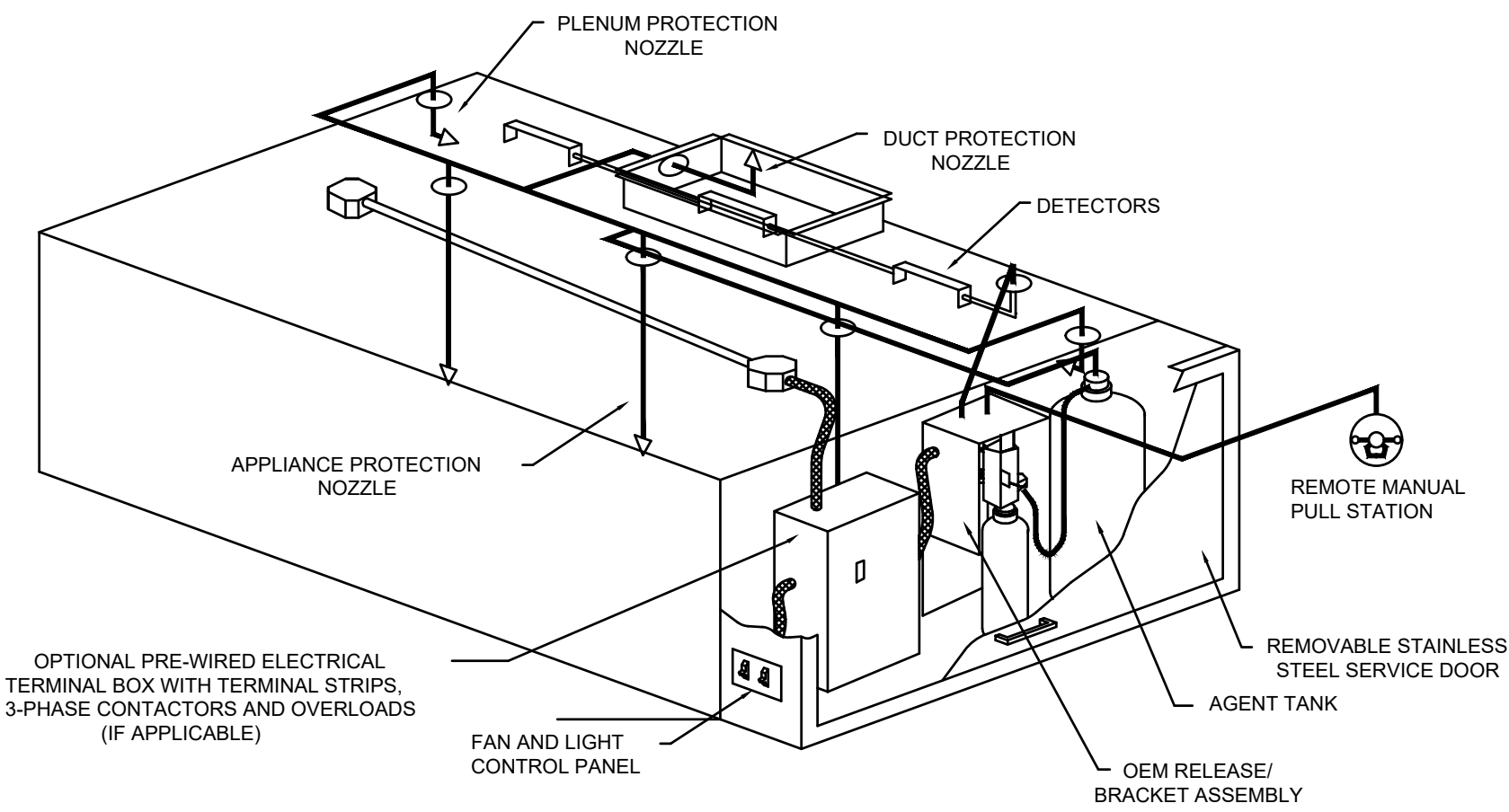
ISSUE DATE		
REV	ISSUE	DATE
	PERMIT	04.27.2022
1	REVISION 1	11.05.2022
2	GREEN SET/REV 2	05.10.2023

SHEET TITLE

HOOD DRAWINGS

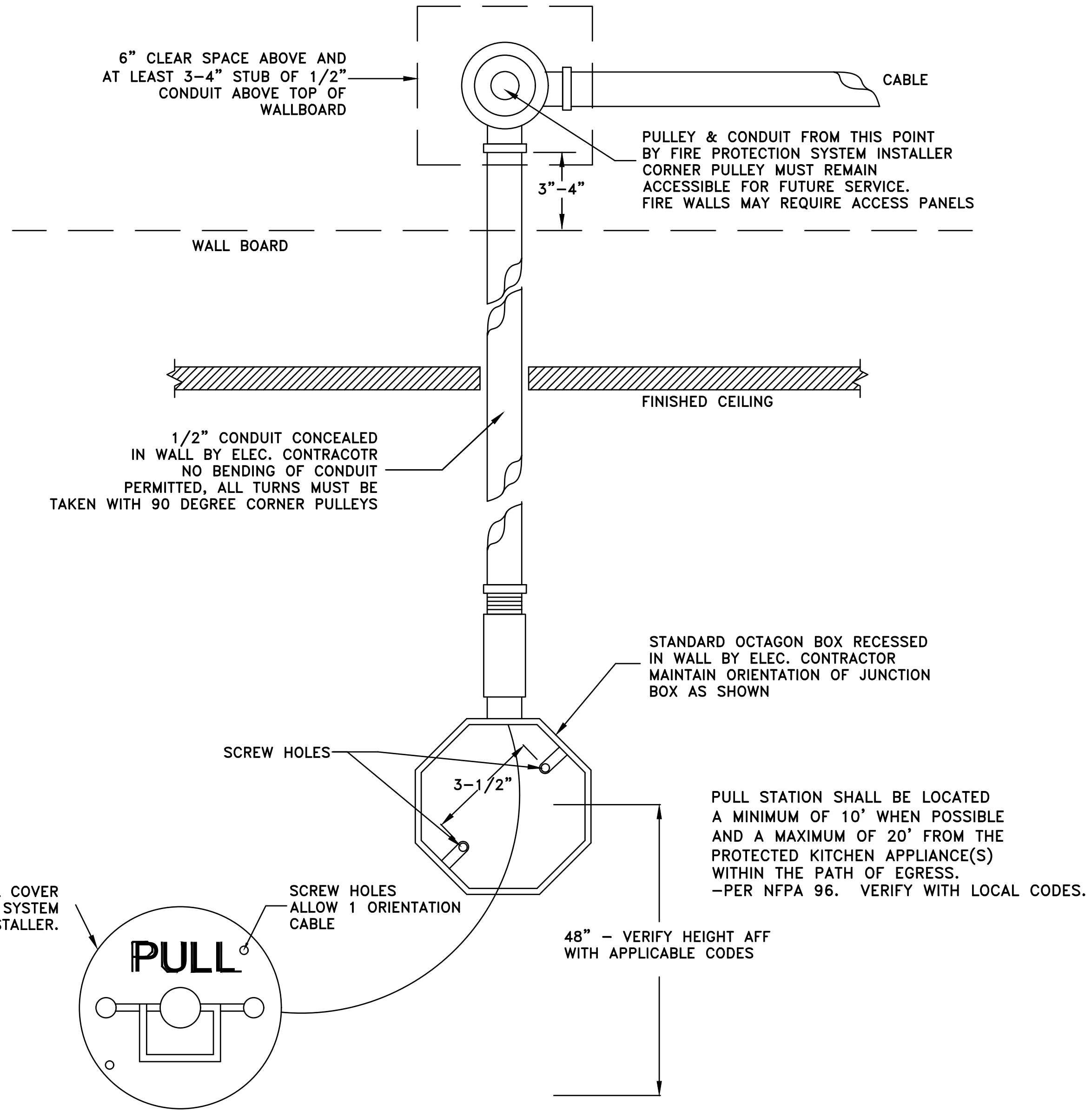
SHEET NUMBER

MH2.0



TYPICAL ANSUL R-102 SYSTEM LAYOUT

TYPICAL ANSUL R102 SYSTEM LAYOUT
 NOTE: FIRE SYSTEM TO INCLUDE ALL NECESSARY PERMITS, FIELD HOOKUP, AND FINAL TEST.
 NOTE: FIRE SYSTEM ENCLOSURE WILL BE FACTORY-MOUNTED ON RIGHT SIDE OF THE RIGHT HOOD



RECESSED REMOTE FIRE PROTECTION PULL STATION DETAIL

BOX AND CONDUIT INSTALLED & SECURED BY ELECTRICAL TRADE
 FIRE SYSTEM INSTALLATION TO BE BY AUTHORIZED ANSUL DISTRIBUTOR

REVISIONS	
DESCRIPTION	DATE

MARYLAND OFFICE
 2221 Kansas Ave., Silver Spring, MD, 20910 PHONE: (800) 988-0881 FAX: (919) 227-5931 EMAIL: reg32@captivefire.com

Five Guys
 Pooler, GA

DATE: 6/27/19
 DWG.#: N/A
 DRAWN BY: SDC-32
 SCALE: NOT TO SCALE
 MASTER DRAWING
 SHEET NO. 3

FOR REFERENCE ONLY

ARCHITECT OF RECORD

CONSULTANT

FIVE GUYS POOLER, GA.
 2120 POOLER PARKWAY
 POOLER, GA 31312

PROJECT NUMBER: 2021236.29

These drawings and specifications contain material owned or licensed by Five Guys and shall not be copied or reproduced without written authorization.

ISSUE DATE		
REV	ISSUE	DATE
	PERMIT	04.27.2022
1	REVISION 1	11.05.2022
2	GREEN SET/REV 2	05.10.2023

SHEET TITLE

ANSUL SYSTEM

SHEET NUMBER

MH3.0

EXHAUST FAN INFORMATION - Job#3884739

FAN UNIT NO.	TAG	FAN UNIT MODEL #	CFM	ESP.	RPM	H.P.	B.H.P.	Ø	VOLT	FLA	DISCHARGE VELOCITY	WEIGHT (LBS.)	SONES
1	FRYERS	DU180HFA	1852	1.375	1103	3.000	0.6680	3	208	9.5	428 FPM	181	13.2
2	GRILL	CASRE15DD	1662	1.375	1601	3.000	1.0120	3	208	8.7	1221 FPM	252	23

FAN OPTIONS

FAN UNIT NO.	TAG	OPTION (Qty. - Descr.)
1	FRYERS	1 - Grease Box
2	GRILL	1 - RE15 - Rain Cap Assembly - Includes Hardware And Gasket.

FAN ACCESSORIES

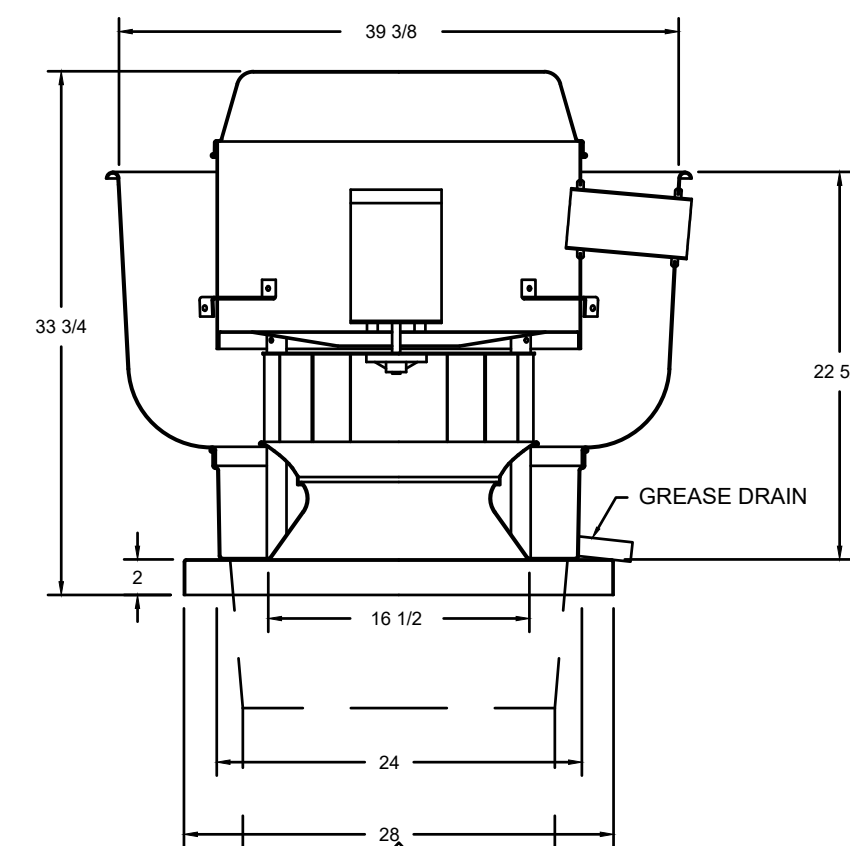
FAN UNIT NO.	TAG	EXHAUST				SUPPLY			
		GREASE CUP	GRAVITY DAMPER	WALL MOUNT	SIDE DISCHARGE	GRAVITY DAMPER	MOTORIZED DAMPER	WALL MOUNT	
1	FRYERS	YES							
2	GRILL								

CURB ASSEMBLIES

NO.	ON FAN	TAG	WEIGHT	ITEM	SIZE
1	#1	FRYERS	34 LBS	Curb	26.500"W x 26.500"L x 26.000"H Vented Hinged
2	#2	GRILL	37 LBS	Curb	23.000"W x 23.000"L x 24.000"H Vented

**FAN #1 DU180HFA
EXHAUST FAN FOR HOOD COVERING FRYERS**

FAN #1 DU180HFA - EXHAUST FAN (FRYERS)



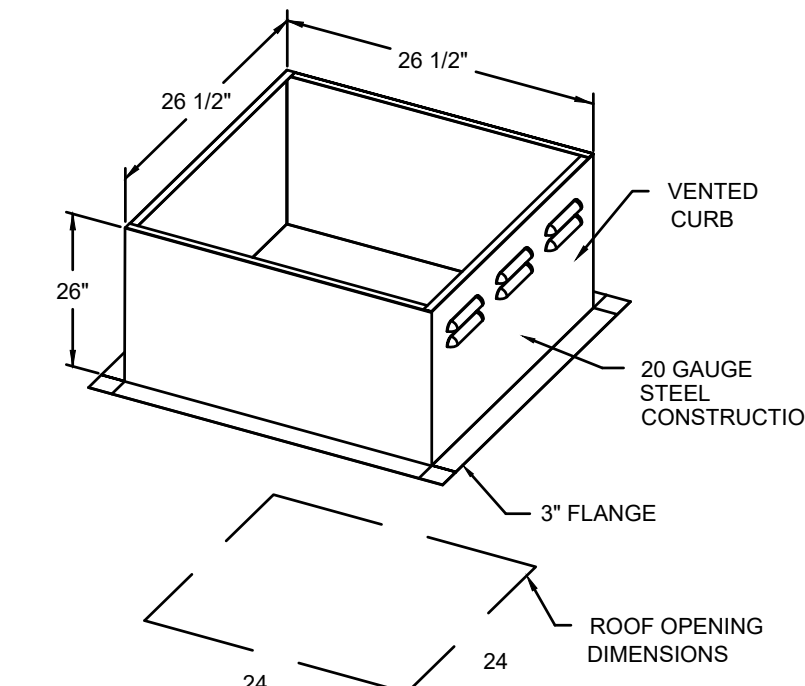
FEATURES:

- DIRECT DRIVE CONSTRUCTION (NO BELTS/PULLEYS)
- ROOF MOUNTED FANS
- RESTAURANT MODEL
- UL705 AND UL762
- VARIABLE SPEED CONTROL
- INTERNAL WIRING
- WEATHERPROOF DISCONNECT
- THERMAL OVERLOAD PROTECTION (SINGLE PHASE)
- HIGH HEAT OPERATION 300°F (149°C)
- GREASE CLASSIFICATION TESTING

NORMAL TEMPERATURE TEST
EXHAUST FAN MUST OPERATE CONTINUOUSLY WHILE EXHAUSTING AIR AT 300°F (149°C) UNTIL ALL FAN PARTS HAVE REACHED THERMAL EQUILIBRIUM, AND WITHOUT ANY DETERIORATING EFFECTS TO THE FAN WHICH WOULD CAUSE UNSAFE OPERATION.

ABNORMAL FLARE-UP TEST
EXHAUST FAN MUST OPERATE CONTINUOUSLY WHILE EXHAUSTING BURNING GREASE VAPORS AT 600°F (316°C) FOR A PERIOD OF 15 MINUTES WITHOUT THE FAN BECOMING DAMAGED TO ANY EXTENT THAT COULD CAUSE AN UNSAFE CONDITION.

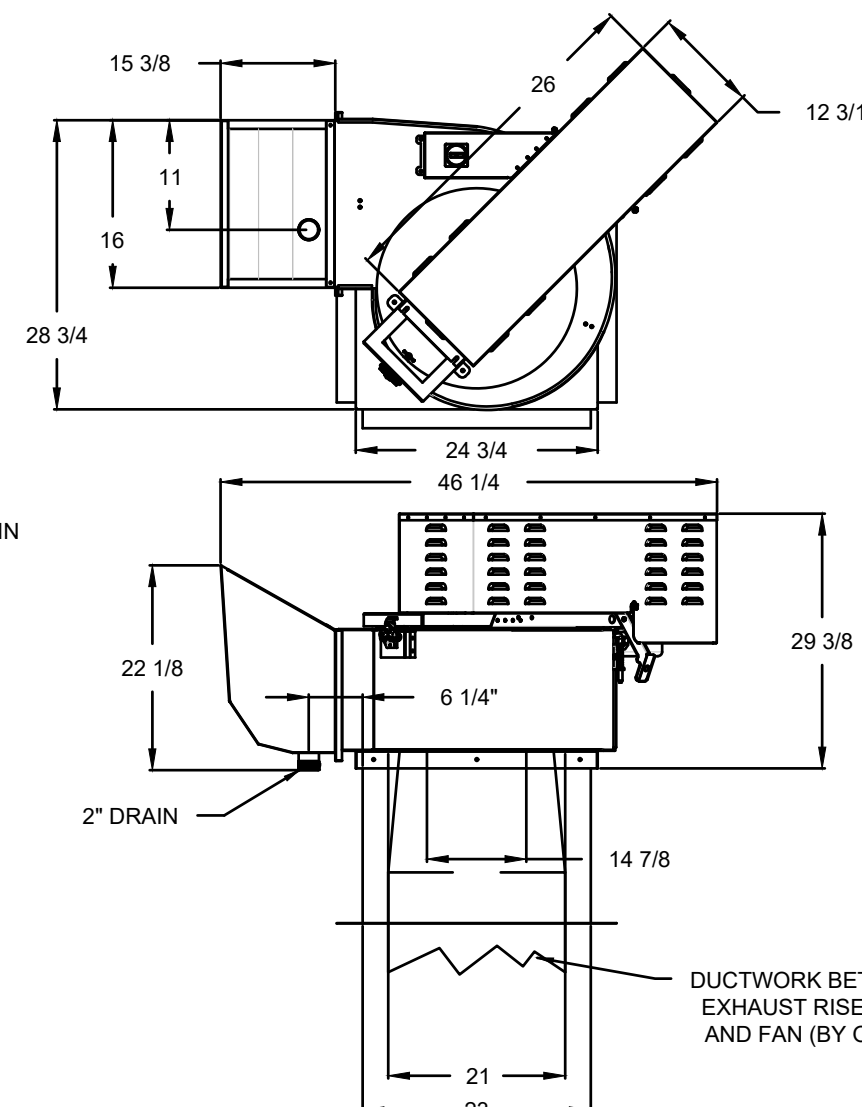
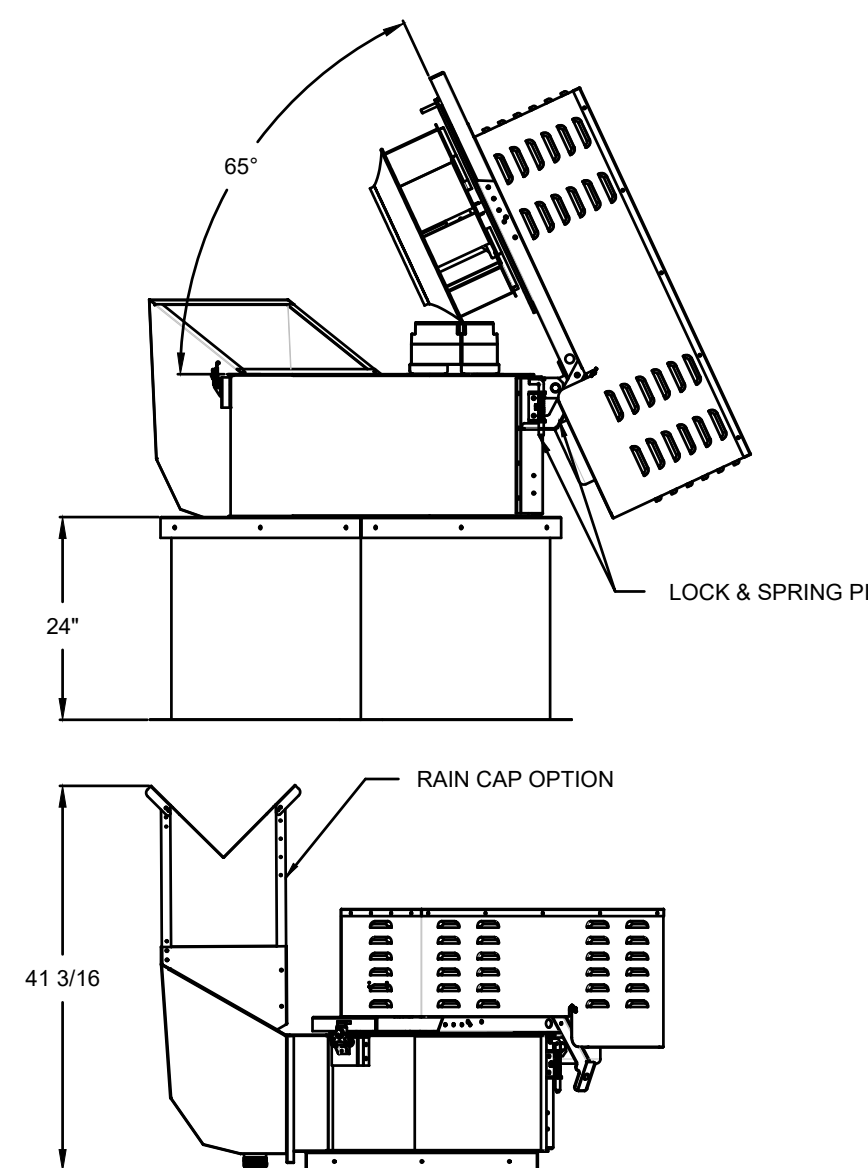
- OPTIONS**
GREASE BOX



PITCHED CURBS ARE AVAILABLE FOR PITCHED ROOFS.
SPECIFY PITCH:
EXAMPLE: 7/12 PITCH = 30° SLOPE

**FAN #2 CASRE15DD
EXHAUST FAN FOR HOOD COVERING GRILLS**

*****EXHAUST FAN FOR HOOD COVERING GRILLS*****



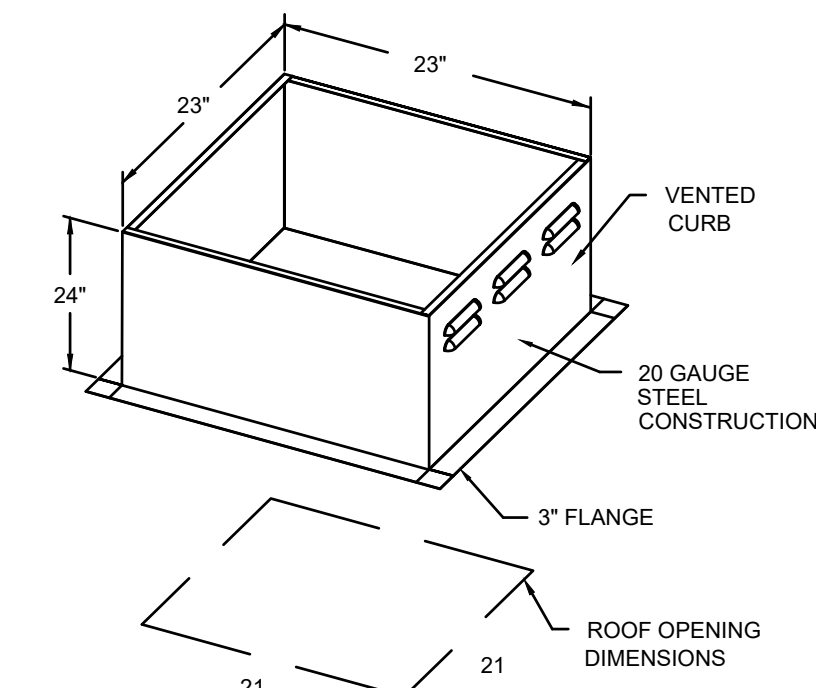
FEATURES:

- ROOF MOUNTED FANS
- RESTAURANT MODEL
- UL762
- HIGH HEAT OPERATION DIRECT DRIVE 300°F (149°C)
- HIGH HEAT OPERATION BELT DRIVE 500°F (260°C)
- HEAT SLINGER
- GREASE CLASSIFICATION TESTING
- TILT OUT WHEEL
- LOCKING PIN FOR POWER PACK
- MOTOR WEATHER COVER
- INTERLOCKED DISCONNECT SWITCH

NORMAL TEMPERATURE TEST DIRECT DRIVE
EXHAUST FAN MUST OPERATE CONTINUOUSLY WHILE EXHAUSTING AIR AT 300°F (149°C) UNTIL ALL FAN PARTS HAVE REACHED THERMAL EQUILIBRIUM, AND WITHOUT ANY DETERIORATING EFFECTS TO THE FAN WHICH WOULD CAUSE UNSAFE OPERATION.

ABNORMAL FLARE-UP TEST BELT & DIRECT DRIVE
EXHAUST FAN MUST OPERATE CONTINUOUSLY WHILE EXHAUSTING BURNING GREASE VAPORS AT 600°F (316°C) FOR A PERIOD OF 15 MINUTES WITHOUT THE FAN BECOMING DAMAGED TO ANY EXTENT THAT COULD CAUSE AN UNSAFE CONDITION.

- OPTIONS**
RE15 - RAIN CAP ASSEMBLY - INCLUDES HARDWARE AND GASKET.



ATTENTION!
INSTALLER MUST READ LABEL NEAR DISCONNECT SWITCH!
MESSAGE ON LABEL:
"INSTALLER SHOULD SUPPLY ENOUGH ELECTRICAL CORD TO LET FAN MAKE COMPLETE SWING"

IMPORTANT INSTALLATION NOTES:
- ELECTRICAL CONNECTION SHOULD BE MADE ON THE HINGE SIDE OF THE EXHAUST FANS TO ENSURE FANS CAN BE HINGED FOR CLEANING
- RAIN CAP MUST BE FIELD INSTALLED ON FAN #2 AT THE HEIGHT AND ORIENTATION SHOWN ON DETAIL

SCOPE OF WORK
HOOD(S): PROVIDED BY OWNER. INSTALLED BY GC.
FIRE SYSTEM(S): PROVIDED & INSTALLED BY OWNER.
EXHAUST FAN(S): PROVIDED BY OWNER. INSTALLED BY GC.

ELECTRICAL CONTROL(S): PROVIDED BY OWNER. INSTALLED BY GC.
GC IS RESPONSIBLE FOR COMPLETE START-UP OF EXHAUST FANS AND

REVISIONS	
DESCRIPTION	DATE

CAPTIVE
MARYLAND OFFICE
www.captiveaire.com
221 Kansas Ave. Silver Spring, MD. 20910 PHONE: (800) 968-0881 FAX: (919) 227-5931 EMAIL: rgs2@captiveaire.com

Five Guys - GRILLS Left
Pooler, GA

DATE: 6/27/19
DWG.#: N/A
DRAWN BY: SDC-32
SCALE: NOT TO SCALE
MASTER DRAWING

SHEET NO. 4

FOR REFERENCE ONLY

ARCHITECT OF RECORD

CONSULTANT

FIVE GUYS POOLER, GA.
2120 POOLER PARKWAY
POOLER, GA 31312

PROJECT NUMBER: 2021236.29

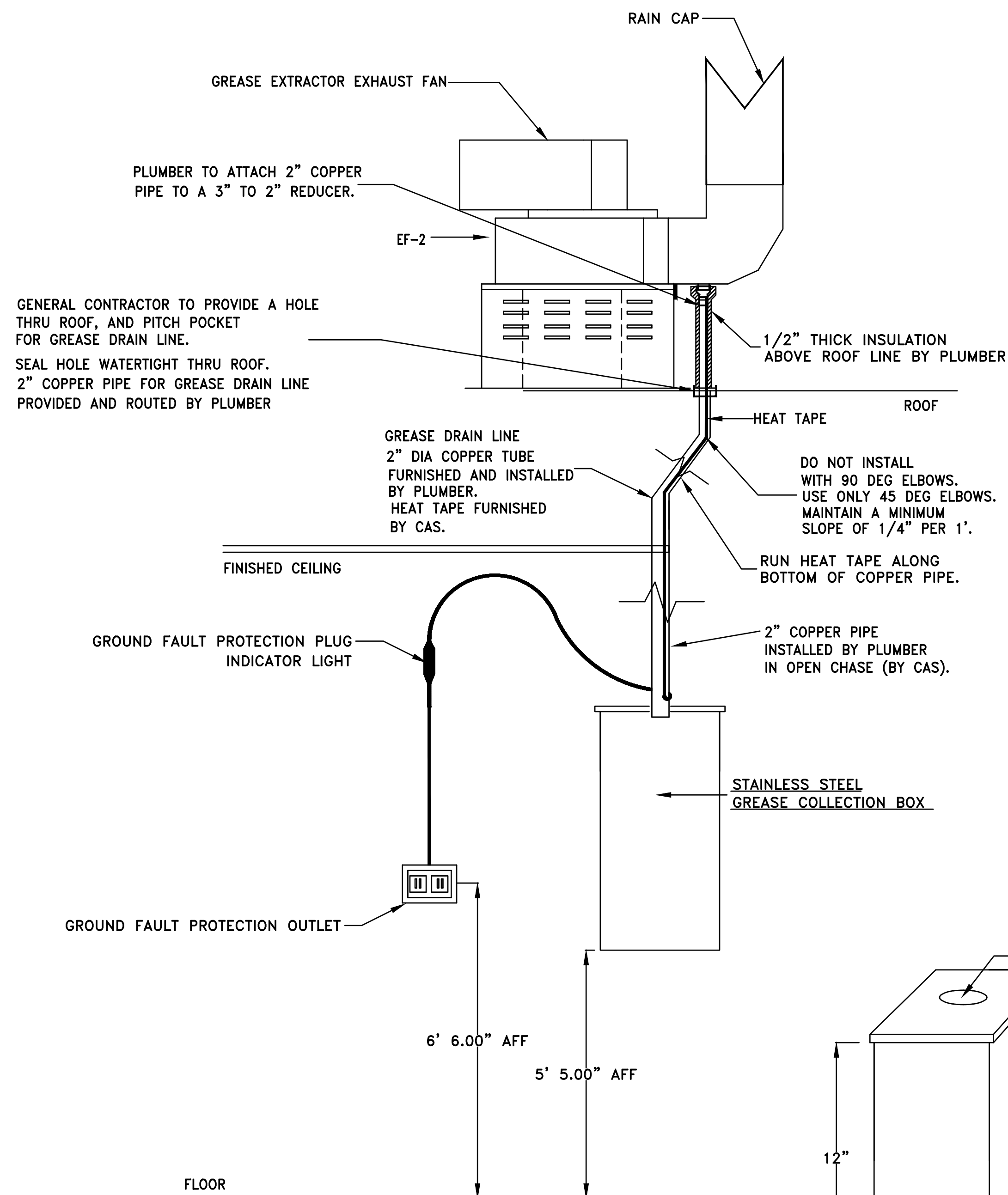
These drawings and specifications contain material owned or licensed by Five Guys and shall not be copied or reproduced without written authorization.

ISSUE DATE		
REV	ISSUE	DATE
	PERMIT	04.27.2022
1	REVISION 1	11.05.2022
2	GREEN SET/REV 2	05.10.2023

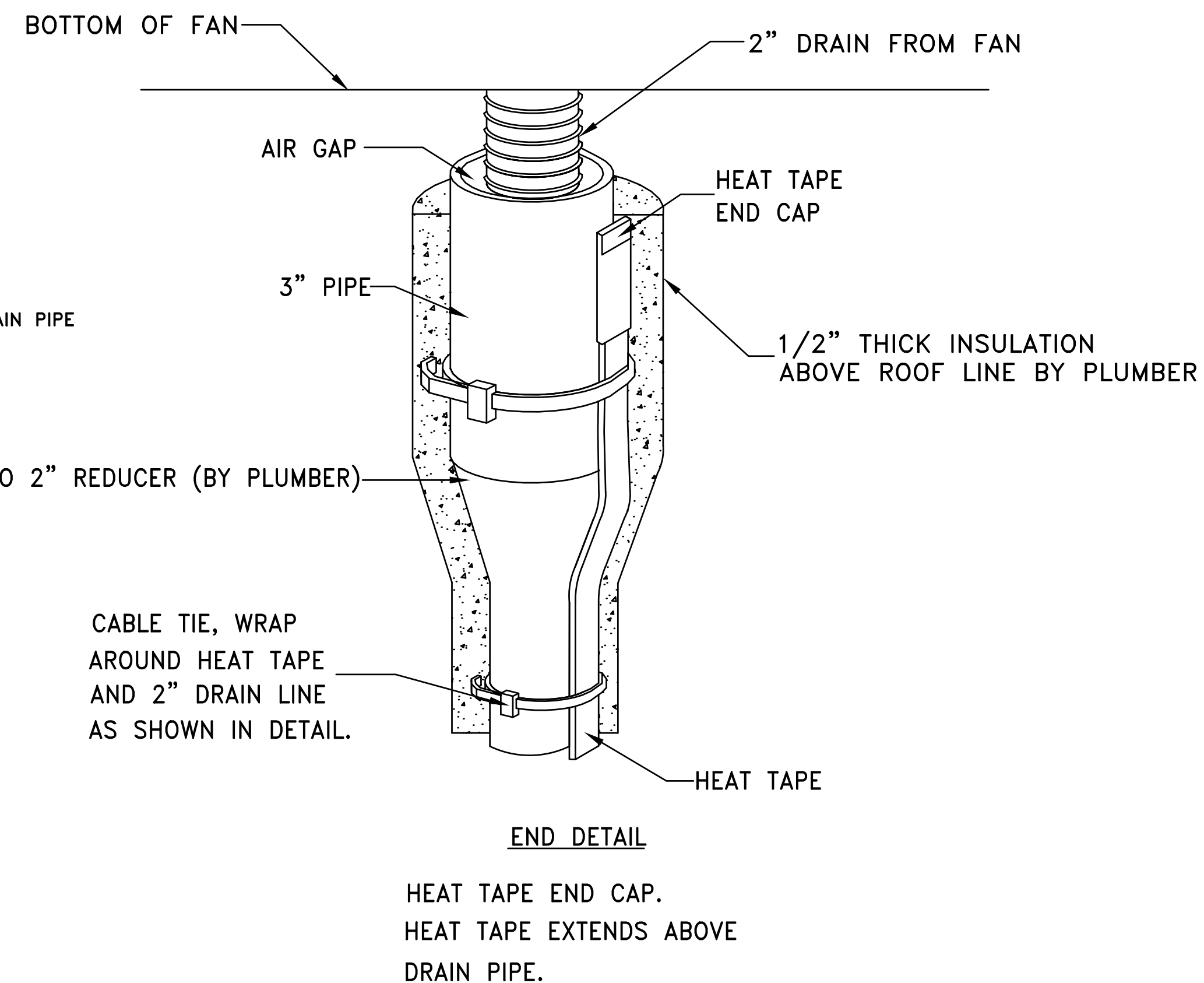
SHEET TITLE
FANS & SCHEDULES

SHEET NUMBER
MH4.0

DRAIN LINE HEATER INSTALLATION DETAIL



	INSTALLATION PROCEDURE:	TRADE RESPONSIBLE
1.	THE HEAT TAPE ASSEMBLY IS SHIPPED LOOSE FROM THE EXHAUST FAN.	CAS
2.	THE GENERAL CONTRACTOR IS TO PROVIDE HOLE IN ROOF AND SEAL THE HOLE (SEE DIAGRAM).	GENERAL CONTRACTOR
3.	INSTALL THE COPPER GREASE LINE DRAIN PIPE, SUPPLIED BY THE PLUMBER.	PLUMBER / ELECTRICIAN
4.	REMOVE (AND SAVE) THE END CAP AND GROUND FAULT PLUG. (GIVE PARTS TO ELECTRICIAN)	PLUMBER
5.	ROUTE THE HEAT TAPE ON THE OUTSIDE OF THE COPPER TUBE.	PLUMBER
6.	SECURE HEAT TAPE AND END CAP TO DRAIN USING CABLE TIE AS SHOWN IN END DETAIL.	PLUMBER
7.	INSULATE COPPER DRAIN LINE ABOVE THE ROOF LINE.	PLUMBER
8.	THE ELECTRICIAN IS TO SUPPLY GROUND FAULT PROTECTION OUTLET LOCATED NEAR GREASE COLLECTION BOX (15 AMP, 120 VOLT CIRCUIT) THE POWER SOURCE SHOULD BE A SEPERATE CIRCUIT. THE HEAT TAPE IS TO BE PROTECTED BY G.F.C.I. CIRCUIT BREAKER. THE HEAT TAPE STAYS ON ALL THE TIME, AND IS NOT CONTROLLED BY THE FAN ON-OFF SWITCH.	ELECTRICIAN
9.	PLUMBER TO MOUNT GREASE COLLECTION BOX ON THE WALL IN PREP AREA. GREASE COLLECTION BOX PROVIDED BY CAS.	PLUMBER
10.	ELECTRICIAN TO MAKE FINAL CONNECTION BETWEEN GROUND FAULT PLUG AND HEAT TAPE. GROUND FAULT PLUG PROVIDED BY CAS.	ELECTRICIAN
11.	ELECTRICIAN TO MAKE FINAL CONNECTION BETWEEN END CAP AND HEAT TAPE (ON ROOF). END CAP PROVIDED BY CAS.	ELECTRICIAN



REVISIONS

NO.	DESCRIPTION	DATE

CAPTIVE
MARYLAND OFFICE
www.captiveaire.com
2221 Kansas Ave, Silver Spring, MD, 20910 PHONE: (800) 988-0881 FAX: (919) 227-5931 EMAIL: reg32@captiveaire.com

Five Guys
Pooler, GA

DATE: 6/27/19
DWG.#: N/A
DRAWN BY: SDC-32
SCALE: NOT TO SCALE
MASTER DRAWING

SHEET NO. 5

IT IS THE RESPONSIBILITY OF THE CONTRACTOR TO DETERMINE IF THE GREASE DRAIN SYSTEM IS ACCEPTABLE TO LOCAL CODE AUTHORITIES

FOR REFERENCE ONLY

ARCHITECT OF RECORD

CONSULTANT

FIVE GUYS POOLER, GA.
2120 POOLER PARKWAY
POOLER, GA 31312

PROJECT NUMBER: 2021236.29

These drawings and specifications contain material owned or licensed by Five Guys and shall not be copied or reproduced without written authorization.

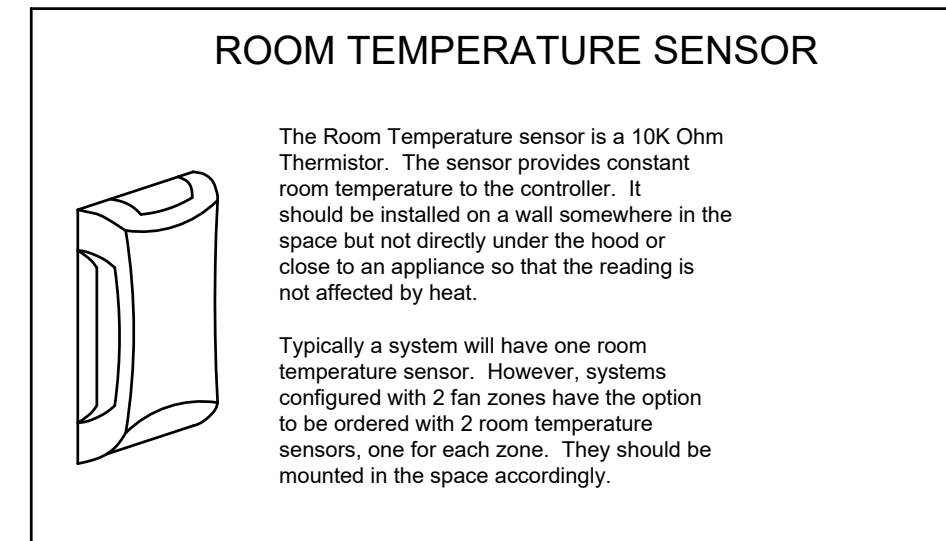
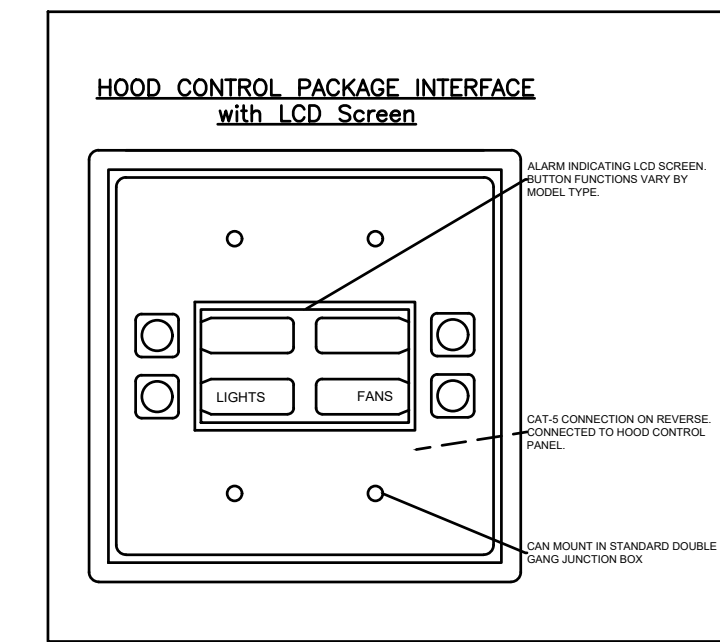
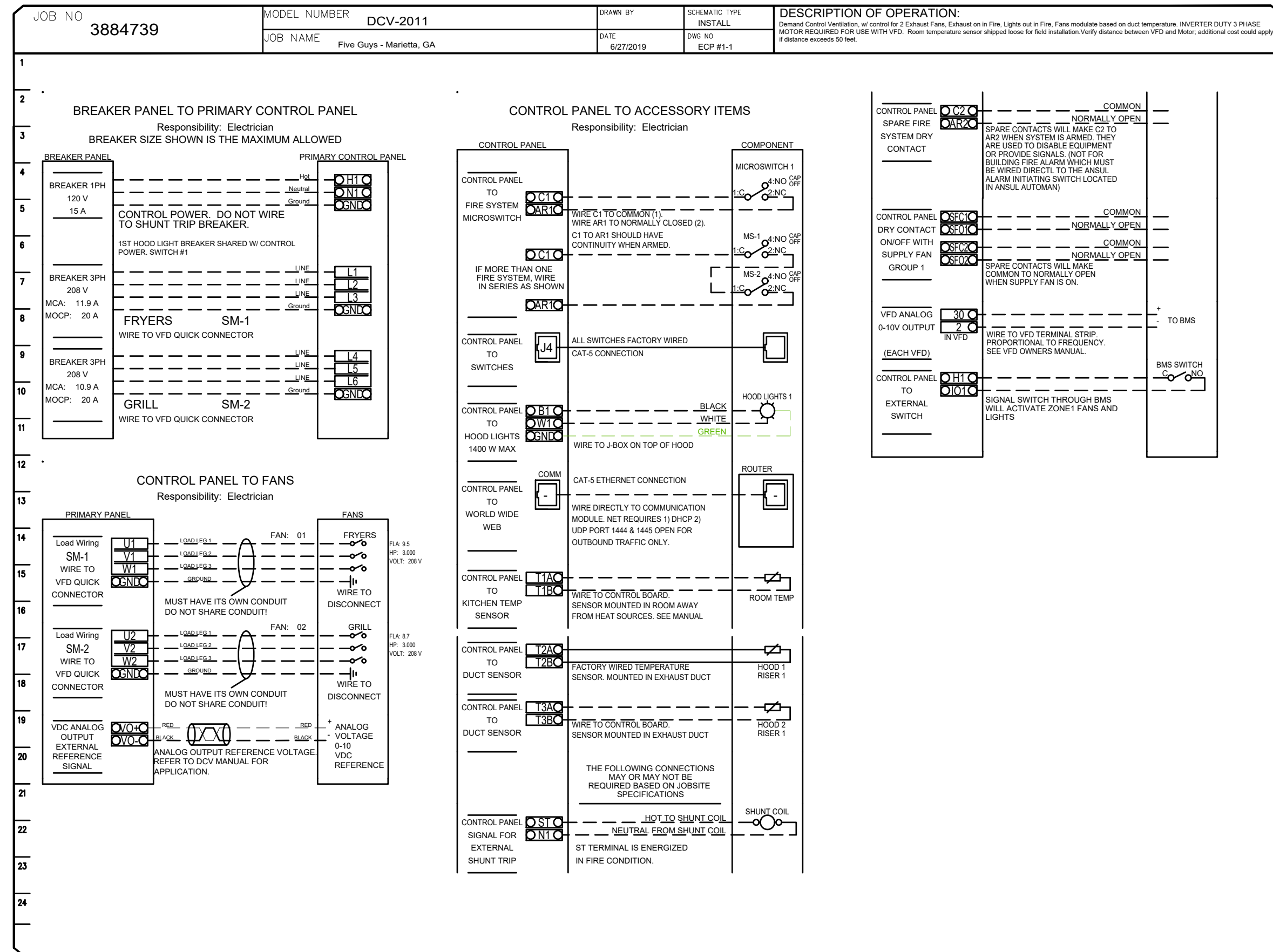
ISSUE DATE		
REV	ISSUE	DATE
	PERMIT	04.27.2022
1	REVISION 1	11.05.2022
2	GREEN SET/REV 2	05.10.2023

SHEET TITLE
DRAIN LINE SYSTEM

SHEET NUMBER
MH5.0

ELECTRICAL PACKAGE -- Job#3884739

NO	TAG	PACKAGE #	LOCATION	SWITCHES		OPTION	FANS CONTROLLED					
				LOCATION	QUANTITY		FAN TAG	TYPE	#	H.P.	VOLT	FLA
1		DCV-2011	Utility Cabinet Left	03 - Utility Cabinet Left	1 Light	Smart Controls DCV	FRYERS	Exhaust	3	3,000	208	9.5
				Hood # 1	1 Fan		GRILL	Exhaust	3	3,000	208	8.7



SCOPE OF WORK

HOOD(S): PROVIDED BY OWNER. INSTALLED BY GC.
 FIRE SYSTEM(S): PROVIDED & INSTALLED BY OWNER.
 EXHAUST FAN(S): PROVIDED BY OWNER. INSTALLED BY GC.

ELECTRICAL CONTROL(S): PROVIDED BY OWNER. INSTALLED BY GC.
 GC IS RESPONSIBLE FOR COMPLETE START-UP OF EXHAUST FANS AND

REVISIONS	
DESCRIPTION	DATE

CAPTIVE

MARYLAND OFFICE
 WWW.CAPTIVE.COM
 2221 Kansas Ave, Silver Spring, MD, 20910 PHONE: (800) 968-0881 FAX: (919) 227-5931 EMAIL: regis2@captive.com

Five Guys
 Pooler, GA

DATE: 6/27/19

DWG.#: N/A

DRAWN BY: SDC-32

SCALE: NOT TO SCALE

MASTER DRAWING

SHEET NO. 6

FOR REFERENCE ONLY

ARCHITECT OF RECORD

CONSULTANT

FIVE GUYS POOLER, GA.
2120 POOLER PARKWAY
POOLER, GA 31312

PROJECT NUMBER: 2021236.29

These drawings and specifications contain material owned or licensed by Five Guys and shall not be copied or reproduced without written authorization.

ISSUE DATE		
REV	ISSUE	DATE
	PERMIT	04.27.2022
1	REVISION 1	11.05.2022
2	GREEN SET/REV 2	05.10.2023

SHEET TITLE

WIRING DIAGRAM

SHEET NUMBER

MH6.0

FOR QUESTIONS, CALL THE
Southern Virginia Office
REGION 28
PHONE: (804) 684-2700
EMAIL: reg28@captiveaire.com

DOAS/RTU FAN SCHEDULE -- JOB#5392583

FAN UNIT NO	TAG	QTY	DOAS/RTU MODEL #	MANUFACTURER	BLOWER	RETURN AIR CFM	MAX OUTSIDE AIR CFM	TOTAL CFM	WEIGHT (LBS)	ESP	ELECTRICAL INFORMATION					COOLING INFORMATION					REHEAT INFORMATION				GAS HEAT INFORMATION				NOTES							
											HP	Ø	VOLT	MCA	MOCP	OUTSIDE AIR		MIXED AIR		LEAVING AIR			CAPACITY		IEER	ISMRE	DISCHARGE			CAPACITY		MOISTURE REMOVAL RATE	GAS TYPE	INPUT BTUs	OUTPUT BTUs	TEMP RISE
																DB	WB	DB	WB	DB	WB	DP	TOTAL	SENS.			DB	WB		DESIRED	MAX					
1	DOAS-1 BOH	1	CASRTU3-I.200-18-15T-DOAS	CAPTIVEAIRE	18P-3	0	2300	2300	2449	0.600	2.00	3	208	61.9A	70A	95.0°F	77.0°F	---	---	53.0°F	53.0°F	53.1°F	185.8 MBH	105.0 MBH	18.8	5.7	70.0°F	63.0°F	42.2 MBH	129.6 MBH	70.3 LBS/HR	NATURAL	187500	150000	60°F	1,2,3,4,5,6,7,8,9,10,11,12,13,14
2	DOAS-2 FOH	1	CASRTU3-I.200-20-15T-DOAS	CAPTIVEAIRE	20P-3	2900	1500	4400	2515	0.500	5.00	3	208	71.9A	80A	95.0°F	77.0°F	81.8°F	67.7°F	54.6°F	54.4°F	54.3°F	171.5 MBH	123.3 MBH	18.8	5.7	70.0°F	60.2°F	73.2 MBH	129.6 MBH	45.7 LBS/HR	NATURAL	200000	160000	32°F	1,2,3,4,5,6,7,8,9,10,11,12,13,15,16

- NOTES:**
1. INVERTER SCROLL COMPRESSOR WITH INTEGRATED OIL SENSOR. DIGITAL OR STAGED SCROLL NOT AN APPROVED EQUAL
 2. DIRECT DRIVE PLENUM BLOWER. BELT DRIVEN BLOWERS ARE NOT ACCEPTABLE
 3. INTEGRATED MONITORING VIA CELLULAR CONNECTION BY MANUFACTURER
 4. REFRIGERATION PRESSURE MONITORING ON HIGH AND LOW PRESSURE SIDE OF SYSTEM INCLUDED THROUGH DIGITAL INTERFACE
 5. ECM MOTOR CONDENSING FANS
 6. ELECTRONIC EXPANSION VALVE. TXV NOT ACCEPTABLE
 7. SUCTION LINE ACCUMULATOR
 8. FACTORY COMMISSIONING WITH 5 YEAR PARTS WARRANTY, 25 YEAR WARRANTY ON STAINLESS STEEL HEAT EXCHANGER
 9. AVERAGING INTAKE, EVAP AND DISCHARGE TEMPERATURE SENSORS (DISCHARGE SENSOR TO BE FACTORY MOUNTED WITHIN UNIT)
 10. 2" EXTERIOR DUAL-WALL CONSTRUCTION W/ R-15 INSULATION-MINIMUM 20GA EXTERIOR W/ 14GA BASE
 11. 80% EFFICIENT FURNACE, WITH MODULATING INDUCER TO MAINTAIN CONSTANT COMBUSTION EFFICIENCY ACROSS FIRING RANGE. 6:1 TURNDOWN WITH NG AND 5:1 TURNDOWN WITH LP
 12. SUPPLY CFM MONITORING INTEGRAL TO UNIT WITH CFM MEASUREMENT INCLUDED THROUGH DIGITAL INTERFACE
 13. FULLY MODULATING HOT GAS REHEAT
 14. DOWN DISCHARGE/NO RETURN
 15. 15 DEGREE LOW AMBIENT OPERATION
 16. DOWN DISCHARGE/DOWN RETURN

FAN OPTIONS

FAN UNIT NO	TAG	QTY	DESCRIPTION
1	DOAS-1 BOH	1	INLET PRESSURE GAUGE, 0-35"
		1	MANIFOLD PRESSURE GAUGE, 0 TO 10" WC, 1 FURNACE
		1	RTU TOTAL CFM MONITORING
		1	SINGLE POINT ELECTRICAL CONNECTION FOR RTU. 750VA TRANSFORMER USED. IF A NON-DCV PREWIRE CONTROLS THIS UNIT, THE #28, #47, "MA", OR "E2" PREWIRE OPTION MUST BE SELECTED. DOES NOT PROVIDE SUPPLY STARTER IN PREWIRE
		1	CASLINK BUILDING MONITORING SYSTEM - INTERNET OR CELLULAR CONNECTION REQUIRED
		1	RTU3 DOWN DISCHARGE
		1	2" MERV 13 FILTERS FOR RTU3 (QTY. 4)
		1	2" MERV 8 FILTERS FOR RTU3 (QTY. 4)
		1	OVERHEAT STAT
		1	VFD FACTORY MOUNTED AND WIRED IN RTU COMMERCIAL CONTROL VESTIBULE
		1	15 TON MODULATING COOLING OPTION, 208/230V, R410A REFRIGERANT, VARIABLE SPEED COMPRESSOR, ECM CONDENSING FANS
		1	15 TON MODULATING REHEAT OPTION - SPACE DEWPOINT CONTROL
		1	REMOTE TEMPERATURE AND HUMIDITY SPACE SENSOR
		1	RTU3 CURB DUCT HANGER
		1	OCCUPIED SCHEDULING
		1	CLOGGED FILTER SWITCH - NOTIFICATION ON HMI
		1	VAV PACKAGE W/ 0-10VDC INPUT CONTROL (571 VFD INCLUDED)
		1	RTU FIXED 100% OA INTAKE CONTROL
		1	RTU3 NO RETURN - 100% OA
		1	DUCT MOUNTED SMOKE DETECTOR - SHIPS LOOSE
1	5 YEAR ENTIRE UNIT PARTS WARRANTY, 10 YEAR ENTIRE UNIT PARTS WARRANTY WITH REMOTE MONITORING AND CAPTIVEAIRE SERVICE CONTRACT, 25 YEAR STAINLESS STEEL FURNACE PARTS WARRANTY (SEE ADDITIONAL DETAILS)		
2	DOAS-2 FOH	1	INLET PRESSURE GAUGE, 0-35"
		1	MANIFOLD PRESSURE GAUGE, 0 TO 10" WC, 1 FURNACE
		1	RTU TOTAL CFM MONITORING
		1	SINGLE POINT ELECTRICAL CONNECTION FOR RTU. 750VA TRANSFORMER USED. IF A NON-DCV PREWIRE CONTROLS THIS UNIT, THE #28, #47, "MA", OR "E2" PREWIRE OPTION MUST BE SELECTED. DOES NOT PROVIDE SUPPLY STARTER IN PREWIRE
		1	CASLINK BUILDING MONITORING SYSTEM - INTERNET OR CELLULAR CONNECTION REQUIRED
		1	LOW AMBIENT COOLING OPERATION - DOWN TO 15F AMBIENT
		1	RTU3 DOWN DISCHARGE
		1	2" MERV 13 FILTERS FOR RTU3 (QTY. 4)
		1	2" MERV 8 FILTERS FOR RTU3 (QTY. 4)
		1	OVERHEAT STAT
		1	VFD FACTORY MOUNTED AND WIRED IN RTU COMMERCIAL CONTROL VESTIBULE
		1	15 TON MODULATING COOLING OPTION, 208/230V, R410A REFRIGERANT, VARIABLE SPEED COMPRESSOR, ECM CONDENSING FANS
		1	15 TON MODULATING REHEAT OPTION - SPACE DEWPOINT CONTROL
		1	REMOTE TEMPERATURE AND HUMIDITY SPACE SENSOR
		1	RTU3 CURB DUCT HANGER
		1	DUCT MOUNTED SMOKE DETECTOR - SHIPS LOOSE
		1	CLOGGED FILTER SWITCH - NOTIFICATION ON HMI
		1	RTU INTAKE/RETURN DAMPER - MANUAL CONTROL VIA HMI
		1	RTU3 DOWN RETURN
		1	OCCUPIED SCHEDULING
1	FACTORY PROVIDED POWER AND COMMUNICATION WHIPS		
1	INTAKE FIRESTAT SET TO 135°F		
1	VAV PACKAGE W/ MANUAL/DDC CONTROL (571 VFD INCLUDED)		
1	5 YEAR ENTIRE UNIT PARTS WARRANTY, 10 YEAR ENTIRE UNIT PARTS WARRANTY WITH REMOTE MONITORING AND CAPTIVEAIRE SERVICE CONTRACT, 25 YEAR STAINLESS STEEL FURNACE PARTS WARRANTY (SEE ADDITIONAL DETAILS)		

CURB ASSEMBLIES

NO	ON FAN	TAG	WEIGHT	ITEM	SIZE
1	#1	DOAS-1 BOH	104 LBS	CURB	59.500"W X 91.000"L X 20.000"H ALONG WIDTH, RIGHT INSULATED.
2	#2	DOAS-2 FOH	104 LBS	CURB	59.500"W X 91.000"L X 20.000"H ALONG WIDTH, RIGHT INSULATED.

REVISIONS	
DESCRIPTION	DATE



Five Guys - Pooler, GA - DOAS

DATE: 4/26/2022
DWG.#: 5392583
DRAWN BY: JMN-28
SCALE: 3/4" = 1'-0"
MASTER DRAWING

SHEET NO.
1

FOR REFERENCE ONLY

ARCHITECT OF RECORD

CONSULTANT

FIVE GUYS POOLER, GA.
2120 POOLER PARKWAY
POOLER, GA 31312

PROJECT NUMBER: 2021236.29

These drawings and specifications contain material owned or licensed by Five Guys and shall not be copied or reproduced without written authorization.

ISSUE DATE		
REV	ISSUE	DATE
	PERMIT	04.27.2022
1	REVISION 1	11.05.2022
2	GREEN SET/REV 2	05.10.2023

SHEET TITLE

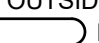
DOAS UNITS

SHEET NUMBER

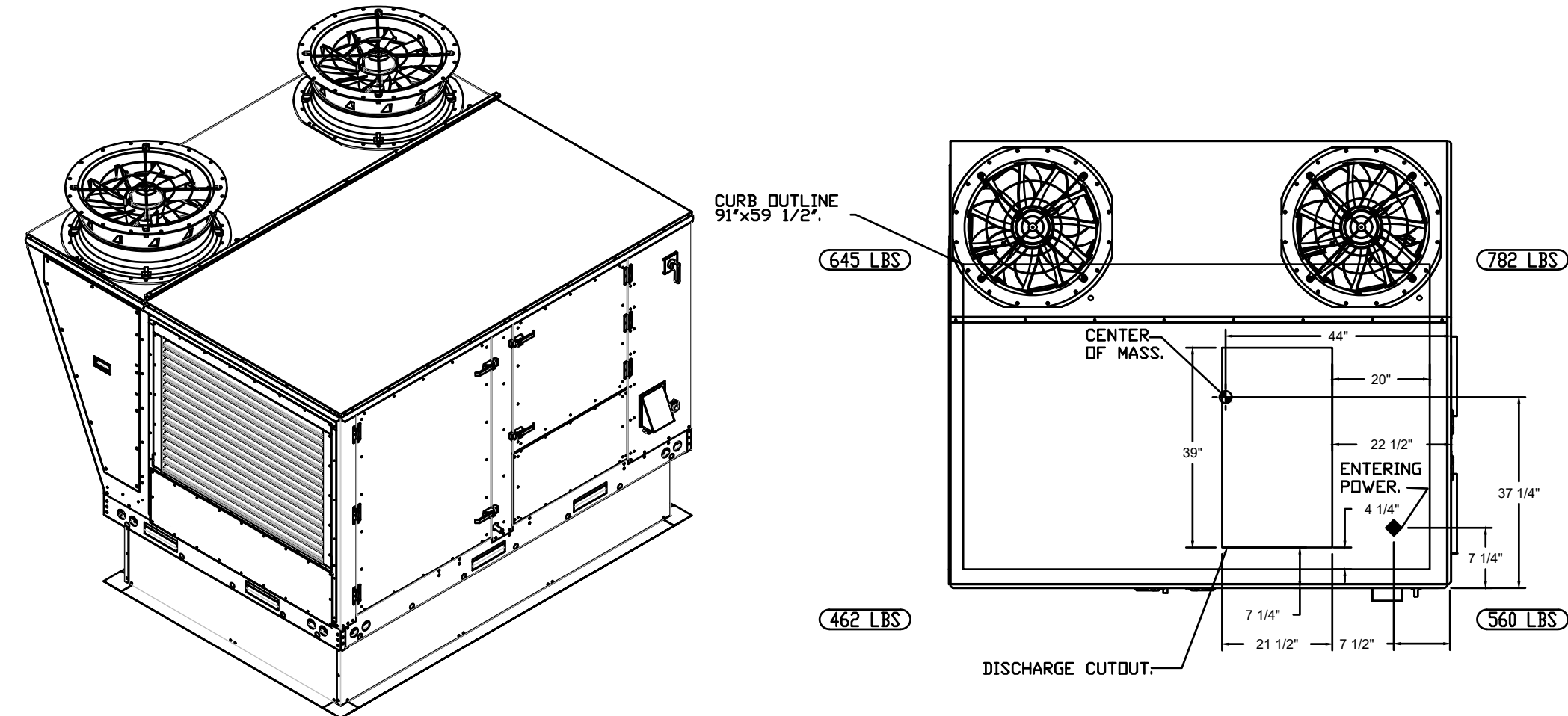
MH7.0

FAN #1 CASRTU3-L200-18-15T-DOAS - HEATER (DOAS-1 BOH)

NOTES:

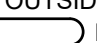
- DO NOT OBSTRUCT OUTSIDE AIR INLET, OUTSIDE AIR COIL OR OUTSIDE AIR FAN.
-  DENOTES CORNER WEIGHT.
- ROOF OPENING MUST BE 2" SMALLER THAN CURB DIMENSIONS IN BOTH DIRECTIONS.

*NOTE: SUPPLY DUCT MUST BE INSTALLED TO MEET SMACNA STANDARDS. A MINIMUM STRAIGHT DUCT LENGTH MUST BE MAINTAINED DOWNSTREAM OF UNIT DISCHARGE AS OUTLINED IN AMCA PUBLICATION 201. WHEN USING RECTANGULAR DUCTWORK, ELBOWS MUST BE RADIUS THROAT, RADIUS BACK WITH TURNING VANES. FLEXIBLE DUCTWORK AND SQUARE THROAT/SQUARE BACK ELBOWS SHOULD NOT BE USED. ANY TRANSITION AND/OR TURNS IN THE DUCTWORK WILL CAUSE SYSTEM EFFECT. SYSTEM EFFECT WILL DRASTICALLY INCREASE STATIC PRESSURE AND REDUCE AIRFLOW. DO NOT RELY ON UNIT TO SUPPORT DUCT IN ANY WAY. FAILURE TO PROPERLY SIZE DUCTWORK MAY CAUSE SYSTEM EFFECTS AND REDUCE PERFORMANCE OF THE EQUIPMENT. SUGGESTED STRAIGHT DUCT SIZE IS 21.5" x 39".

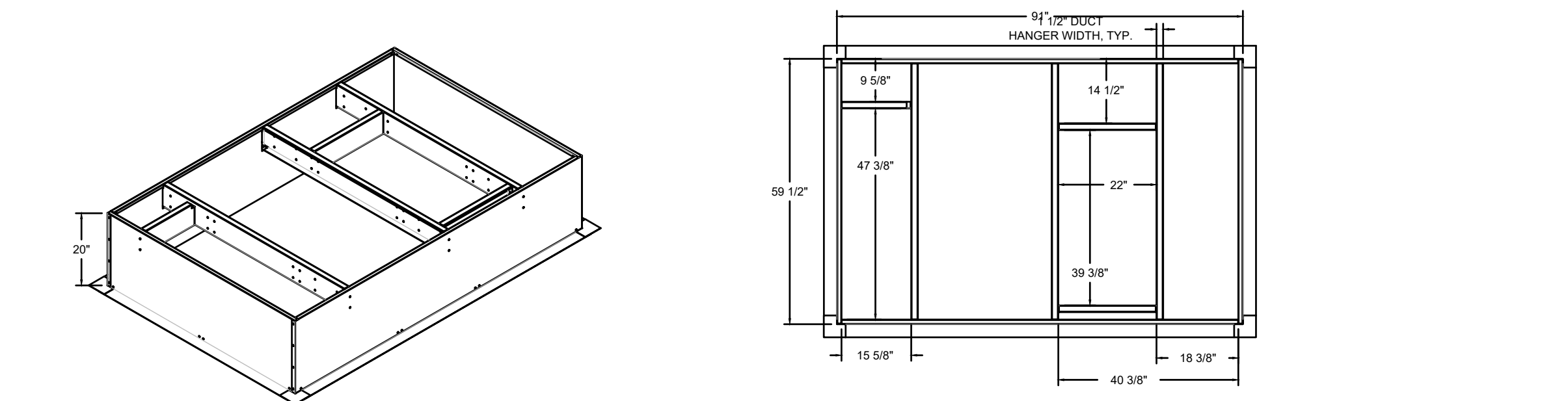
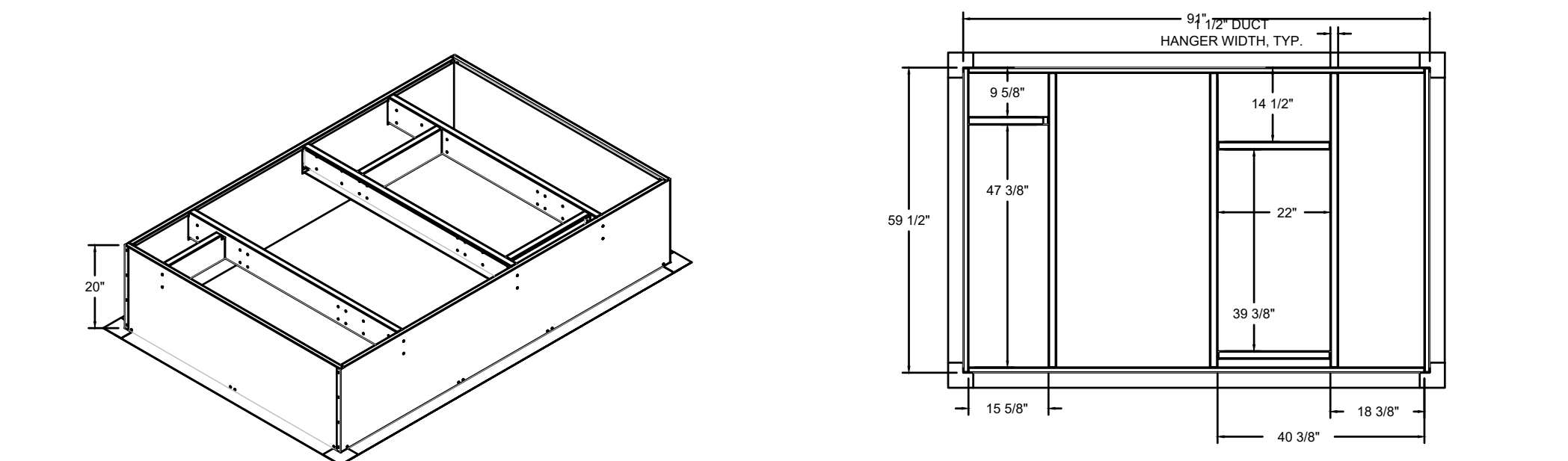
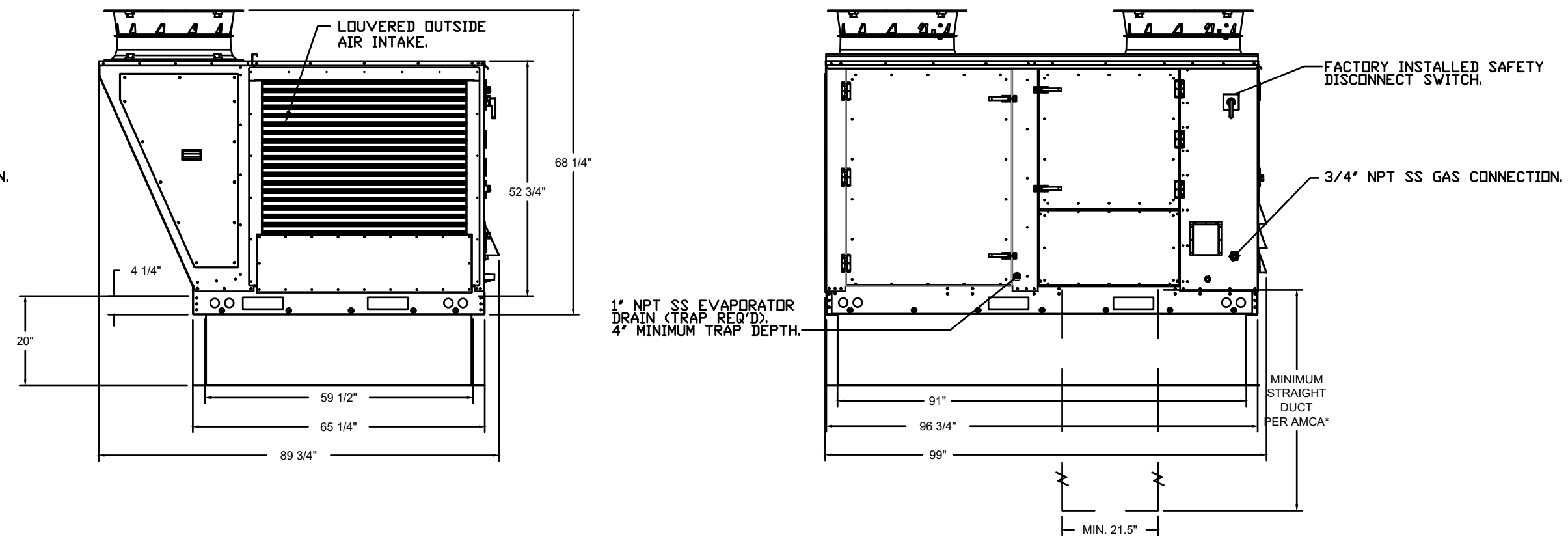
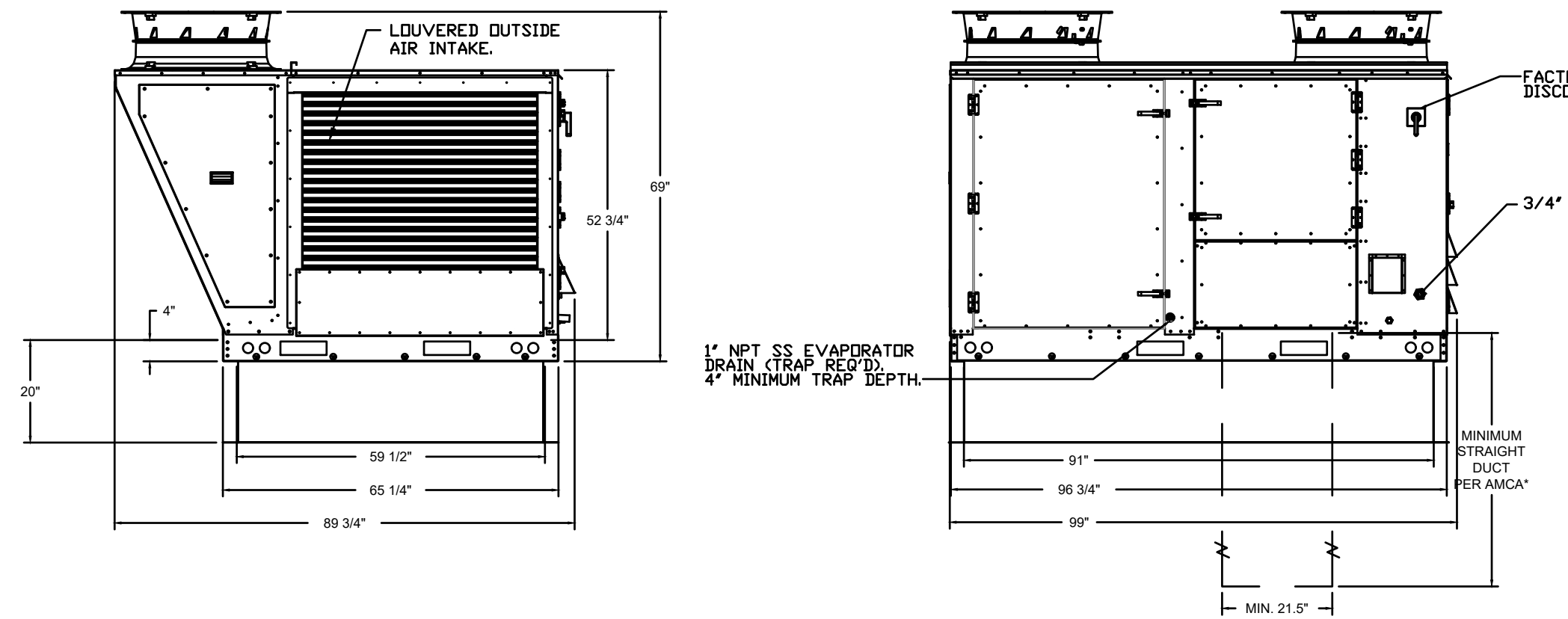
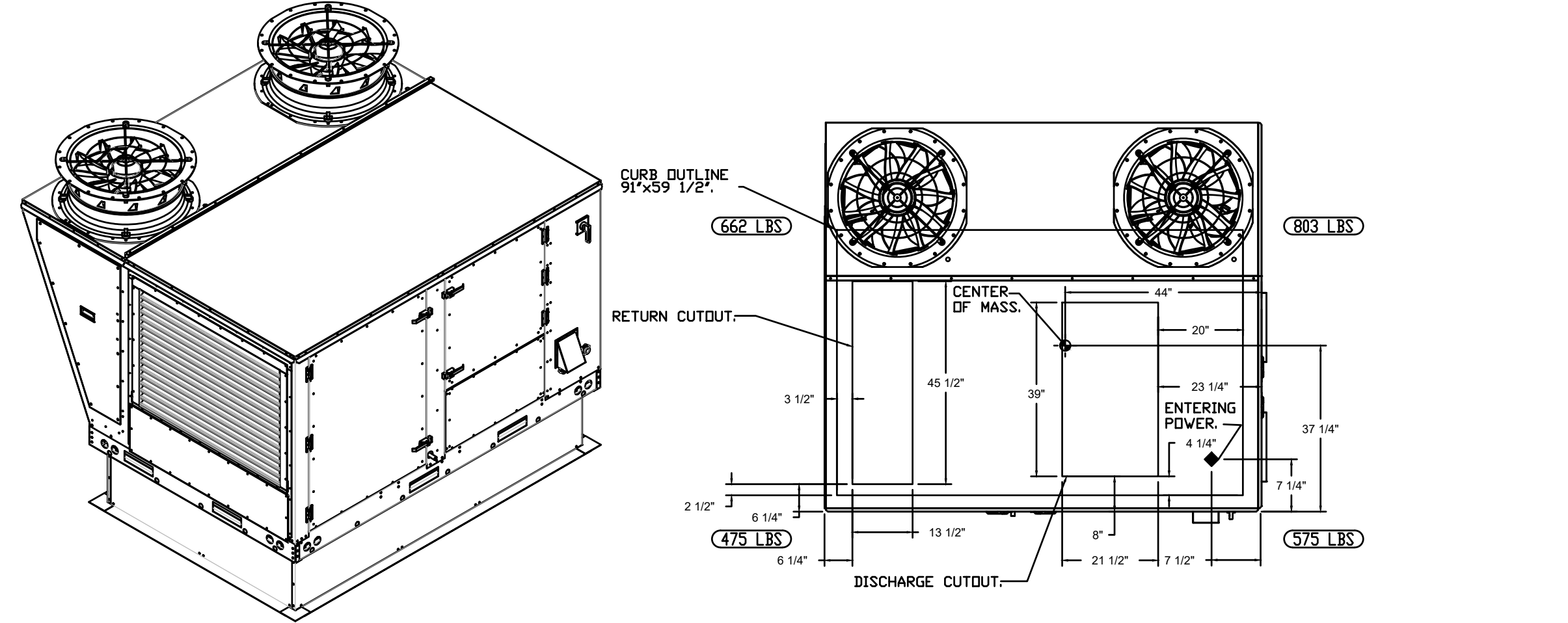


FAN #2 CASRTU3-L200-20-15T-DOAS - HEATER (DOAS-2 FOH)

NOTES:

- DO NOT OBSTRUCT OUTSIDE AIR INLET, OUTSIDE AIR COIL OR OUTSIDE AIR FAN.
-  DENOTES CORNER WEIGHT.
- ROOF OPENING MUST BE 2" SMALLER THAN CURB DIMENSIONS IN BOTH DIRECTIONS.

*NOTE: SUPPLY DUCT MUST BE INSTALLED TO MEET SMACNA STANDARDS. A MINIMUM STRAIGHT DUCT LENGTH MUST BE MAINTAINED DOWNSTREAM OF UNIT DISCHARGE AS OUTLINED IN AMCA PUBLICATION 201. WHEN USING RECTANGULAR DUCTWORK, ELBOWS MUST BE RADIUS THROAT, RADIUS BACK WITH TURNING VANES. FLEXIBLE DUCTWORK AND SQUARE THROAT/SQUARE BACK ELBOWS SHOULD NOT BE USED. ANY TRANSITION AND/OR TURNS IN THE DUCTWORK WILL CAUSE SYSTEM EFFECT. SYSTEM EFFECT WILL DRASTICALLY INCREASE STATIC PRESSURE AND REDUCE AIRFLOW. DO NOT RELY ON UNIT TO SUPPORT DUCT IN ANY WAY. FAILURE TO PROPERLY SIZE DUCTWORK MAY CAUSE SYSTEM EFFECTS AND REDUCE PERFORMANCE OF THE EQUIPMENT. SUGGESTED STRAIGHT DUCT SIZE IS 21.5" x 39".



REVISIONS	
DESCRIPTION	DATE



Five Guys - Pooler, GA - DOAS

DATE: 4/26/2022
 DWG.#: 5392583
 DRAWN BY: JMN-28
 SCALE: 1/2" = 1'-0"
 MASTER DRAWING
 SHEET NO. 2

FOR REFERENCE ONLY

ARCHITECT OF RECORD

CONSULTANT

FIVE GUYS POOLER, GA.
 2120 POOLER PARKWAY
 POOLER, GA 31312

PROJECT NUMBER: 2021236.29

These drawings and specifications contain material owned or licensed by Five Guys and shall not be copied or reproduced without written authorization.

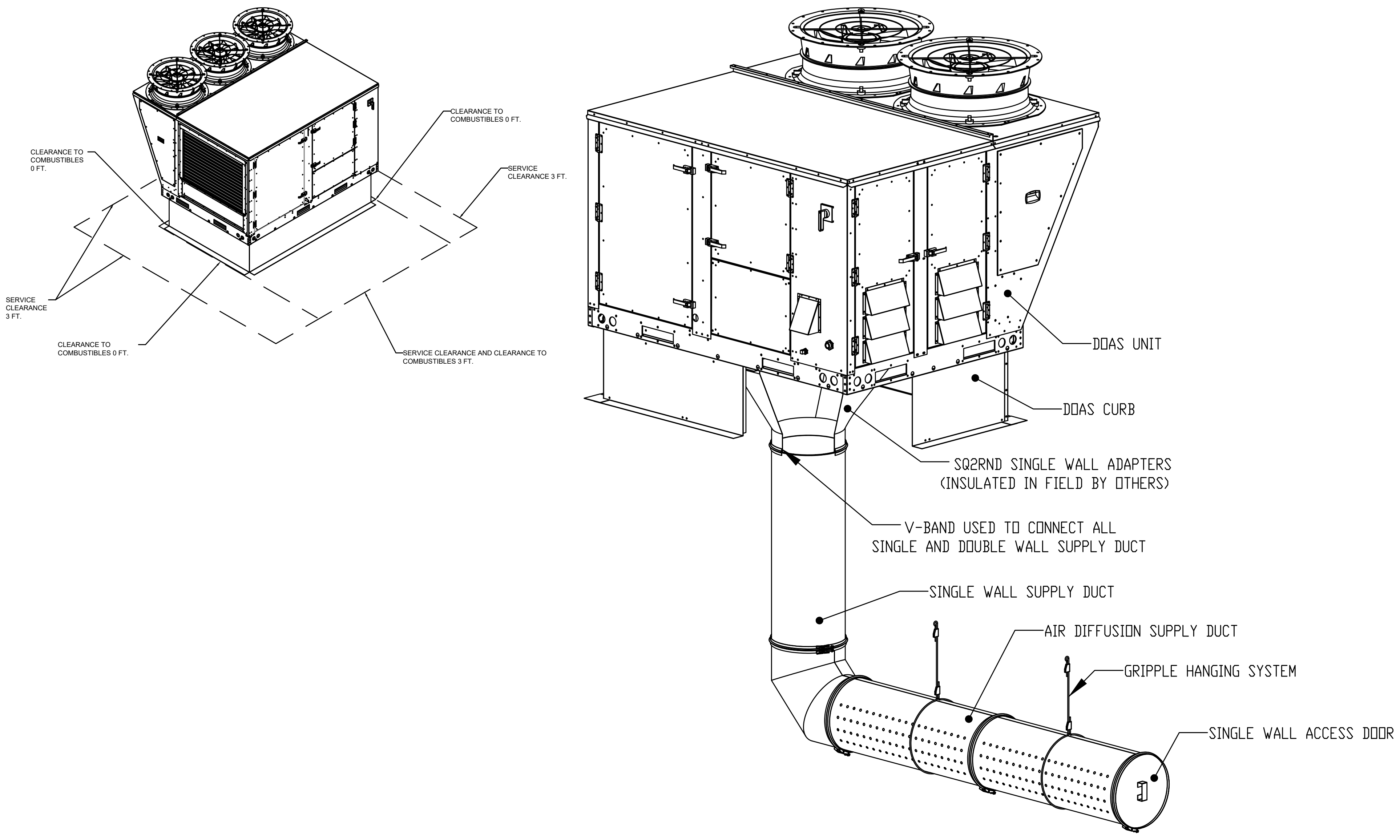
ISSUE DATE		
REV	ISSUE	DATE
	PERMIT	04.27.2022
1	REVISION 1	11.05.2022
2	GREEN SET/REV 2	05.10.2023

SHEET TITLE

DOAS UNITS

SHEET NUMBER

MH8.0



REVISIONS	
DESCRIPTION	DATE

CAPTIVE

Southern Virginia Office
www.captiveair.com
606 Denbigh Blvd, Suite 406, Newport News, VA, 23606 PHONE: (804) 684-2700 FAX: (819) 227-5911 EMAIL: reg28@captiveair.com

Five Guys - Pooler, GA - DOAS

DATE: 4/26/2022

DWG.#: 5392583

DRAWN BY: JMN-28

SCALE: 3/4" = 1'-0"

MASTER DRAWING

SHEET NO.
3

FOR REFERENCE ONLY

ARCHITECT OF RECORD

CONSULTANT

FIVE GUYS POOLER, GA.
2120 POOLER PARKWAY
POOLER, GA 31312

PROJECT NUMBER: 2021236.29

These drawings and specifications contain material owned or licensed by Five Guys and shall not be copied or reproduced without written authorization.

ISSUE DATE		
REV	ISSUE	DATE
	PERMIT	04.27.2022
1	REVISION 1	11.05.2022
2	GREEN SET/REV 2	05.10.2023

SHEET TITLE
DOAS UNITS

SHEET NUMBER
MH9.0



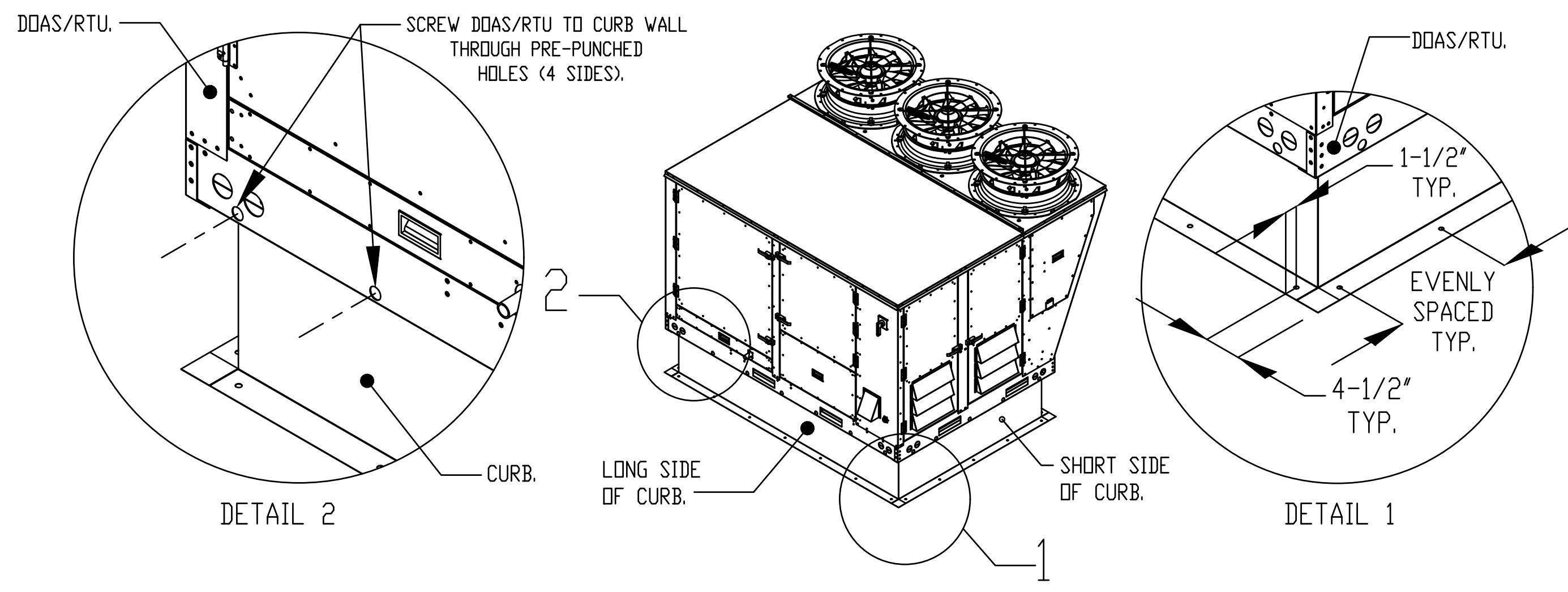
AIR DIFFUSION SUPPLY DUCT SPECIFICATIONS:
 PROVIDE AIR DIFFUSION SUPPLY DUCT EQUAL TO CAPTIVEAIRE SYSTEMS MODEL DW-S0(HC), DW-S90(HC), & DW-S180(HC).
 THREE DISTINCT HOLE PATTERN OPTIONS TO COVER A VARIETY OF CEILING HEIGHTS.
 NO ADDITIONAL DIFFUSERS REQUIRED, AS THE DUCT ITSELF PROVIDES AIR DIFFUSION.
 MADE OF HIGH QUALITY STAINLESS STEEL DESIGNED TO LAST 20+ YEARS.
 HIGH INDUCTION SUPPLY DUCT IS CONSTRUCTED USING 24 GAUGE, 430 SS - 5" THRU 24".
 HIGH INDUCTION SUPPLY DUCT IS CONSTRUCTED USING 20 GAUGE, 430 SS - 26" THRU 36".
 QUICK ONSITE ASSEMBLY USING EPDM GASKETS & UNIVERSAL V-BANDS.
 DOUBLE WALL SUPPLY DUCT AVAILABLE FOR INTERIOR AND EXTERIOR SPACES, EITHER CONDITIONED OR UNCONDITIONED.
 DOUBLE WALL SUPPLY DUCT AVAILABLE IN DW-1S, DW-2S, & DW-3S TO MEET SPECIFIC REGIONAL "R" VALUE REQUIREMENTS.

Insulation R-Value Recommendations		
Supply Duct Type	Minimum R-value	Space Type
Single Wall - S & -HC	N/A	Conditioned Space Only
Double Wall - 1S	R-4	Unconditioned Interior Space Only
Double Wall - 2S	R-8	Unconditioned Space Climate Zones 1-4
Double Wall - 3S	R-12	Unconditioned Space Climate Zones 5-8

DOUBLE WALL SUPPLY DUCT IS INSULATED WITH A 24 GAUGE 430 STAINLESS OUTER SHELL.
 AIR DIFFUSION SUPPLY DUCT COMPLIES WITH SMACNA (SHEET METAL AND AIR CONDITIONING CONTRACTORS) BEST PRACTICES.
 POSITIONING OF SPRINKLERS TO AVOID OBSTRUCTION TO DISCHARGE, SEE NFPA 13, TABLE 8.12.5.1.1.

TYPICAL DOAS/RTU ROOF MOUNTING INSTALLATION INSTRUCTIONS

1. SECURE THE CURB TO THE ROOF FRAMING MEMBERS BY DRILLING 1/4" PILDOT HOLES IN THE CURB FLANGES AT LOCATIONS SHOWN IN THE DIAGRAM BELOW. USING 3/8" X 2" ZINC PLATED STEEL LAG BOLTS, AND ZINC PLATED WASHERS, SCREW THROUGH THE CURB FLANGES AND INTO THE ROOF FRAMING MEMBERS. A MINIMUM OF (5) LAG BOLTS ON EACH SHORT SIDE, AND (7) LAG BOLTS ON EACH LONG SIDE IS REQUIRED.
2. SECURE THE UNIT BASE TO THE SIDE WALLS OF THE CURB USING (24) 1/4"-14 X 2" SELF-DRILLING, STEEL ZINC PLATED SCREWS. PRE-PUNCHED HOLES HAVE BEEN PROVIDED FOR EACH SCREW LOCATION.



REVISIONS	
DESCRIPTION	DATE

CAPTIVEAIRE

Southern Virginia Office
 www.captiveaire.com
 606 Denbigh Blvd., Suite 406, Newport News, VA, 23606 PHONE: (804) 684-2700 FAX: (819) 227-5911 EMAIL: reg28@captiveaire.com

Five Guys - Pooler, GA - DOAS

DATE: 4/26/2022
 DWG.#: 5392583
 DRAWN BY: JMN-28
 SCALE: 3/4" = 1'-0"
 MASTER DRAWING
 SHEET NO. 4

FOR REFERENCE ONLY

ARCHITECT OF RECORD

CONSULTANT

FIVE GUYS POOLER, GA.
 2120 POOLER PARKWAY
 POOLER, GA 31312

PROJECT NUMBER: 2021236.29

These drawings and specifications contain material owned or licensed by Five Guys and shall not be copied or reproduced without written authorization.

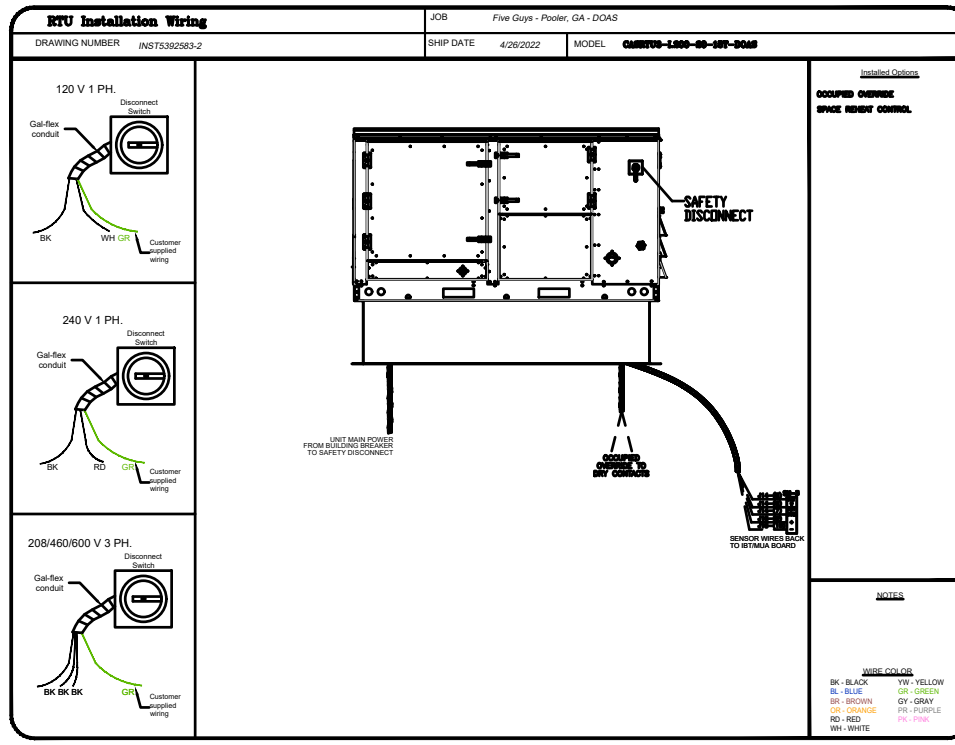
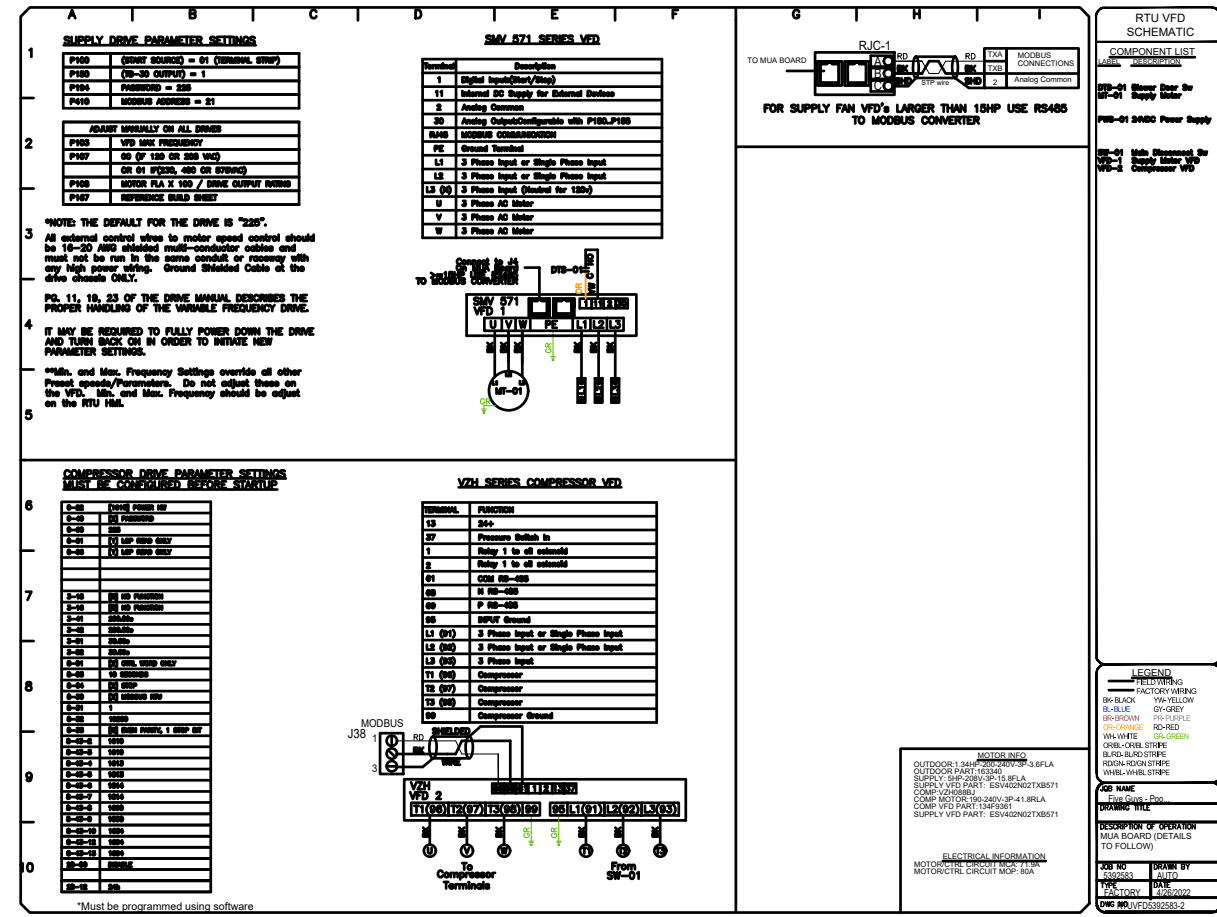
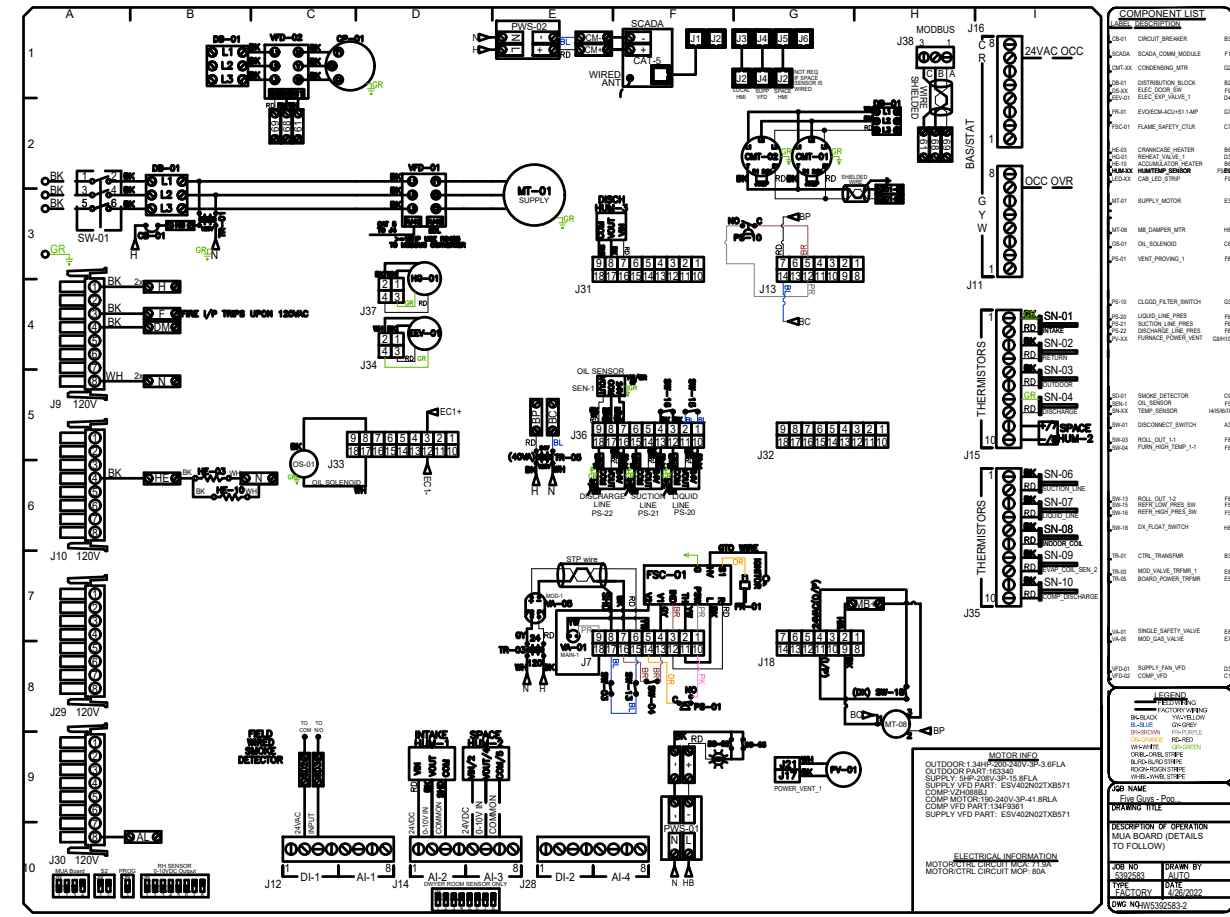
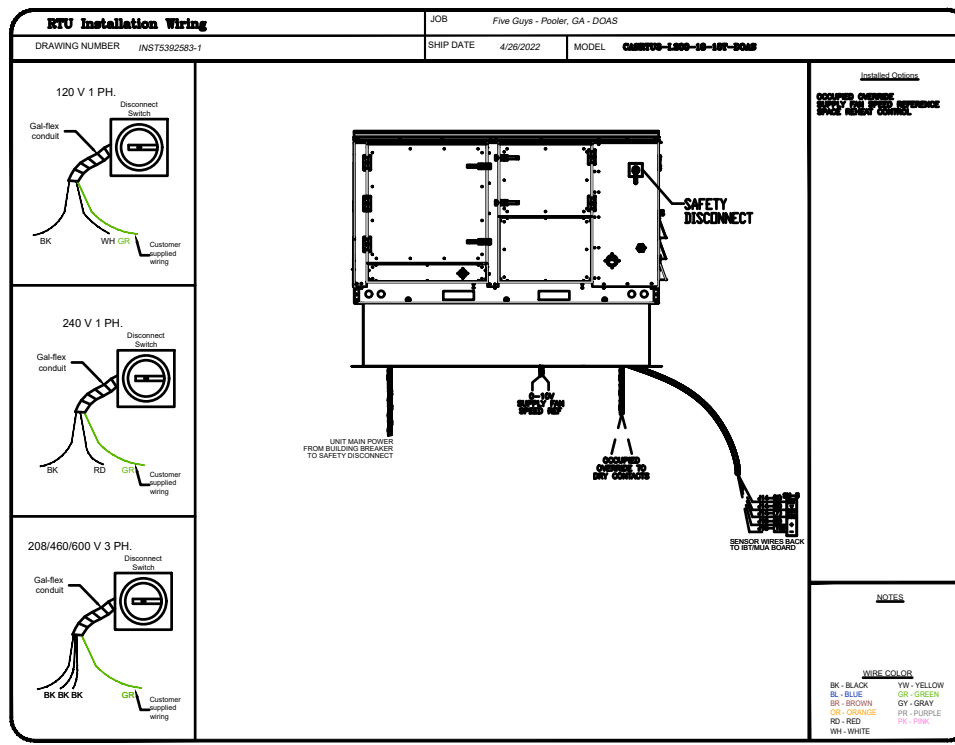
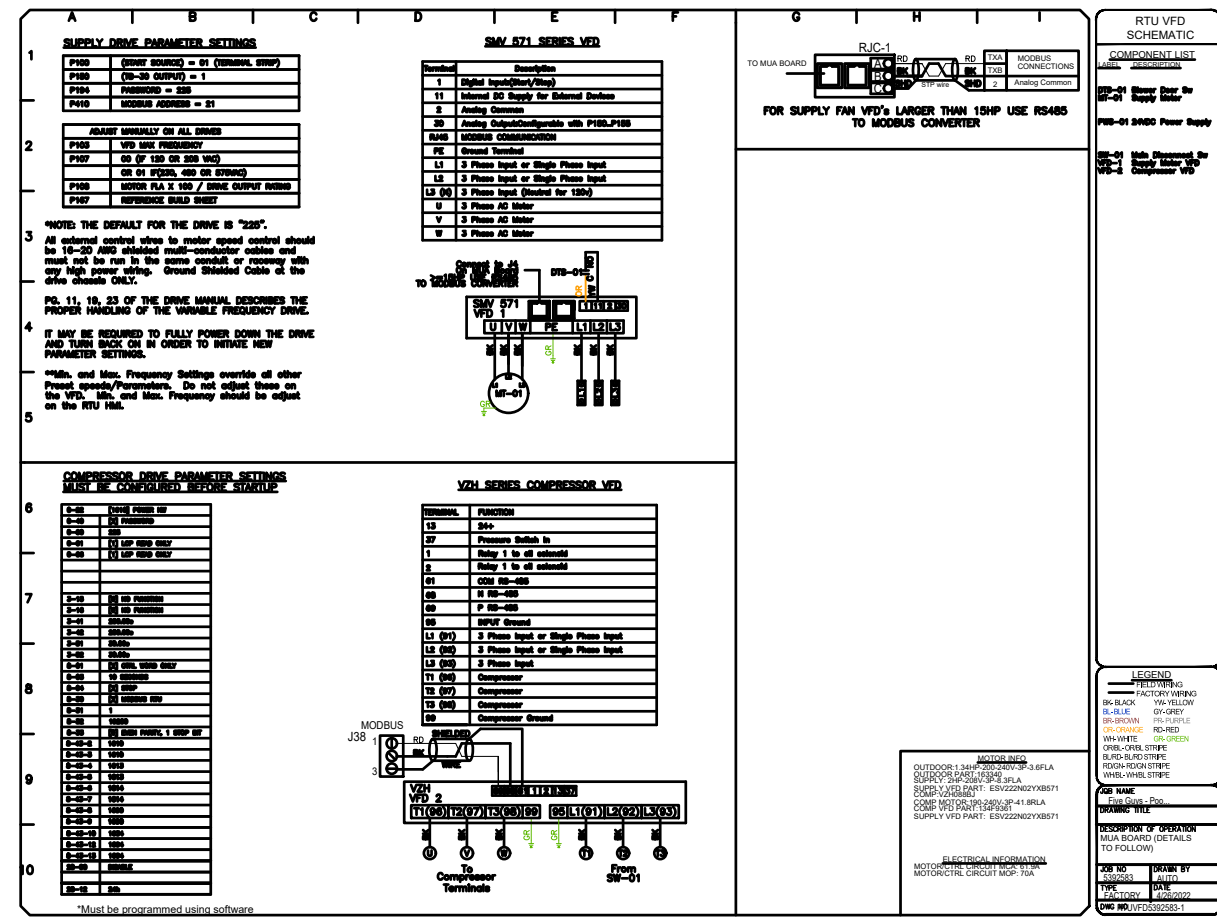
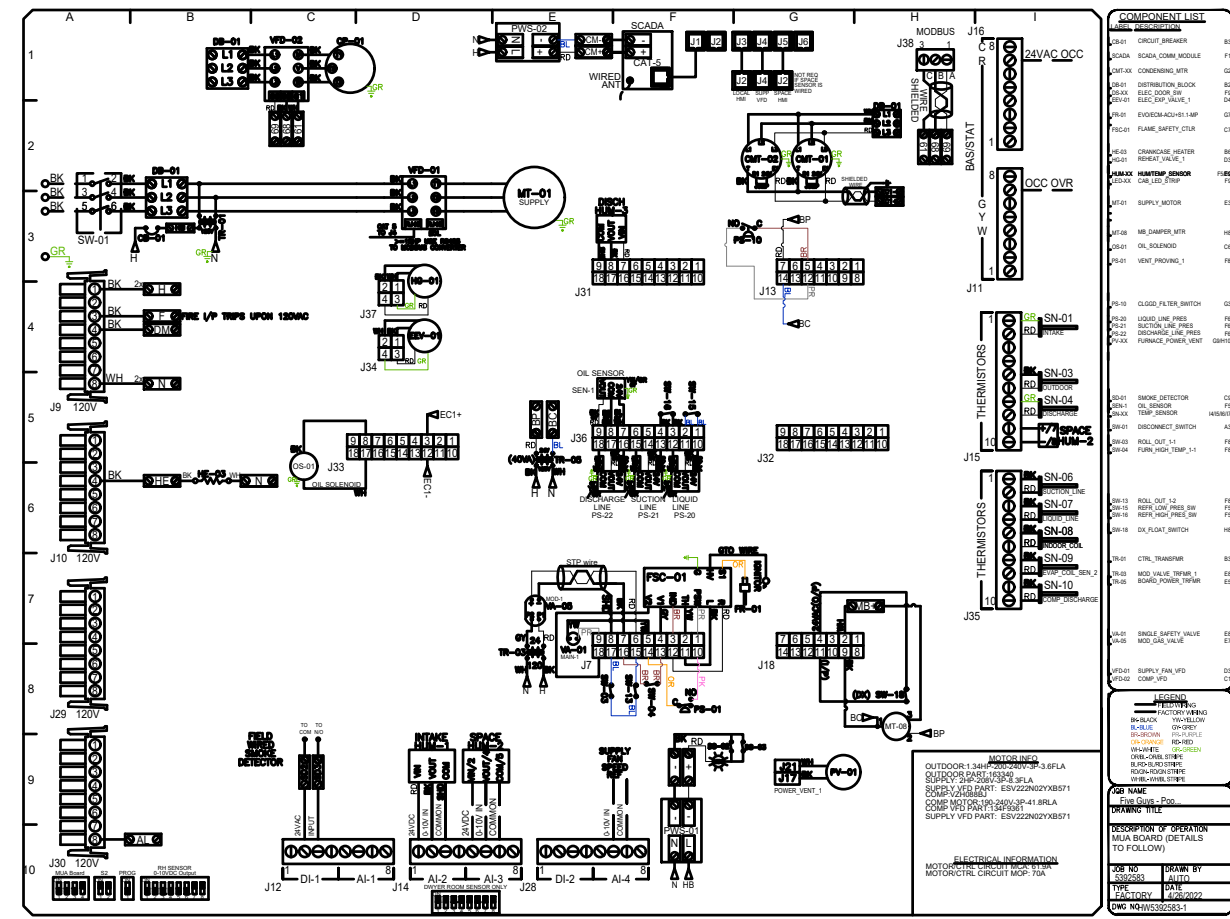
ISSUE DATE		
REV	ISSUE	DATE
	PERMIT	04.27.2022
1	REVISION 1	11.05.2022
2	GREEN SET/REV 2	05.10.2023

SHEET TITLE

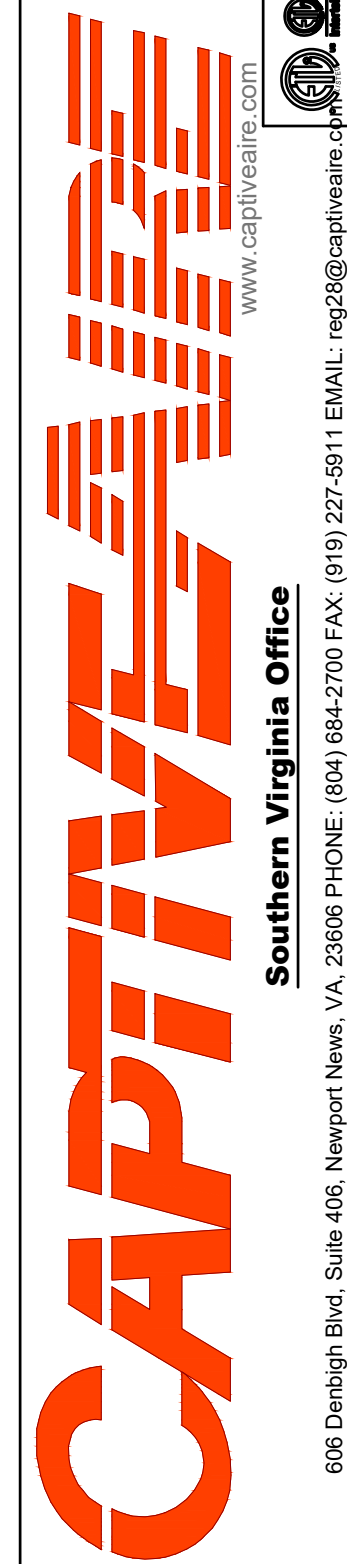
DOAS UNITS

SHEET NUMBER

MH10.0



REVISIONS	
DESCRIPTION	DATE



Five Guys - Pooler, GA - DOAS

DATE: 4/26/2022

DWG.#: 5392583

DRAWN BY: JMN-28

SCALE: 1/2" = 1'-0"

MASTER DRAWING

SHEET NO. 5

FOR REFERENCE ONLY

ARCHITECT OF RECORD

CONSULTANT

FIVE GUYS POOLER, GA.
2120 POOLER PARKWAY
POOLER, GA 31312

PROJECT NUMBER: 2021236.29

These drawings and specifications contain material owned or licensed by Five Guys and shall not be copied or reproduced without written authorization.

ISSUE DATE		
REV	ISSUE	DATE
	PERMIT	04.27.2022
1	REVISION 1	11.05.2022
2	GREEN SET/REV 2	05.10.2023

SHEET TITLE

WIRING DIAGRAM

SHEET NUMBER

MH11.0