

Report By:

National TAB
1329 E. KEMPER ROAD
SUITE 4210
CINCINNATI, OH 45246



Report: TAB REPORT
Function: Test, Adjust, & Balance
Date: 10/27/2025
Completed By: National TAB

PROJECT

Chavez Supermarket Improvement (Newark, CA)

5453 Thornton Ave

Newark, CA 95121

Client

B&M Builders, Inc.
11330 Sunrise Park Drive
Suite C
Rancho Cordova, CA 95742

National TAB

Project: Chavez Supermarket Improvement (Newark, CA)

Table Of Contents

Section	Page #
Certification	3
Equipment Calibrations	4
Abbreviations	5
GRD	6
AHU/RTU	8
FAN - Exhaust	18
FAN - Supply	26
Fan Coil	27
Kitchen Hood Type I	39



CERTIFICATION

PROJECT: Chavez Supermarket Improvement (Newark, CA)

The data presented in this report is a record of system measurements and final adjustments that have been obtained in accordance with the current edition of the NEBB *Procedural Standards for Testing, Adjusting, and Balancing of Environmental Systems*. Any variances from design quantities, which exceed NEBB tolerances, are noted in the Test-Adjust-Balance Report Project Summary.

The air distribution system has been tested and balanced and final adjustments have been made in accordance with NEBB standards and the project specifications.

NEBB TAB FIRM: National TAB-Southeast

REGISTRATION NO: 3755

CERTIFIED BY: J. Scott Springer 23312

DATE: 10/27/2025

The hydronic distribution system has been tested and balanced and final adjustments have been made in accordance with NEBB standards and the project specifications.

NEBB TAB FIRM: National TAB-Southeast

REGISTRATION NO: 3755

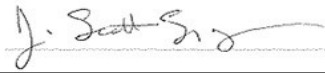
CERTIFIED BY: J. Scott Springer 23312

DATE: _____

Submitted and Certified by:

NEBB TAB FIRM: National TAB-Southeast

TAB PROFESSIONAL: J. Scott Springer

SIGNATURE: 

REGISTRATION NO: 3755 (NTAB) / 23312

CERTIFICATION EXP: 12/31/2025





National TAB



Testing, Adjusting, and Balancing Equipment

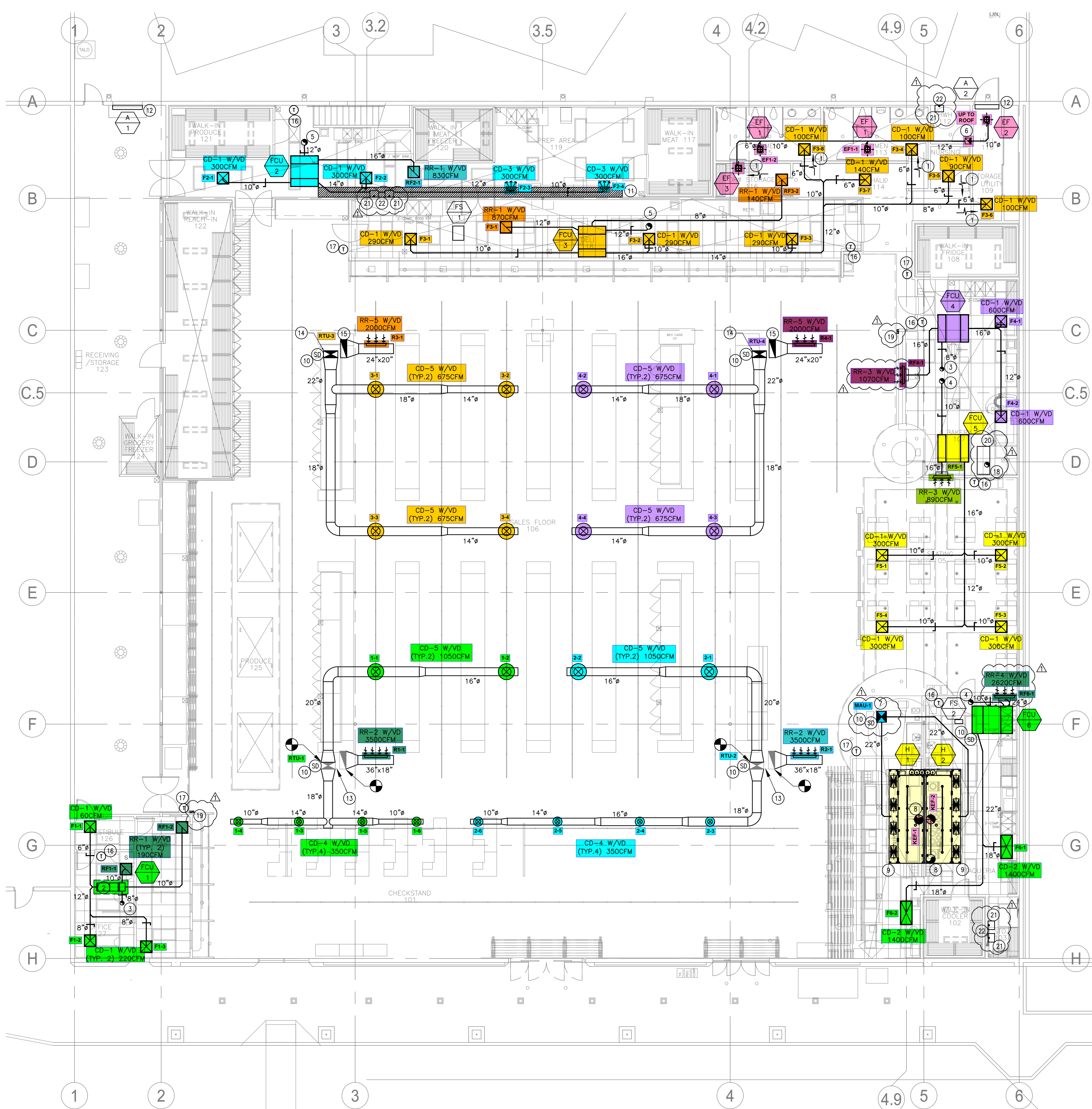
INTELLIGENCE

Function		Range	Minimum Accuracy	Instrument Information	Calibration Date	Date Due
AIR	AIR PRESSURE	0 in wg to 10 in wg	2% +/- 0.001 in wg	Evergreen S-PVF-1 S/N 2200484C	3/24/2025	3/24/2027
	AIR VELOCITY INSTRUMENT	50 fpm to 3900 fpm	+/- 5 % +/- 7 fpm	Evergreen S-PVF-1 S/N 2200484C	3/24/2025	3/24/2027
	DIRECT HOOD READING	100 cfm to 2000 cfm	+/- 5 % +/- 7 cfm	Evergreen S-PVF-1 S/N 2200484C	3/24/2025	3/24/2027
TEMPERATURE	AIR METER	-20 F to 240 F	+/- .5 % 2 F	Cooper ATKINS - SRH77A S/N 071118034	9/9/2025	9/9/2026
	AIR PROBE	-20 F to 240 F	+/- .5 % 2 F	Cooper ATKINS - PD1388 7-6 S/N 5028	9/9/2025	9/9/2026
	IMMERSION METER	-20 F to 240 F	+/- .5 % 2 F	Cooper ATKINS - SRH77A S/N 071118034	9/9/2025	9/9/2026
	IMMERSION PROBE	-20 F to 240 F	+/- .5 % 2 F	Cooper ATKINS - PD1388 7-6 S/N 1075	9/9/2025	9/9/2026
	CONTACT METER	-20 F to 240 F	+/- .5 % 2 F	Cooper ATKINS - SRH77A S/N 071118034	9/9/2025	9/9/2026
	CONTACT PROBE	-20 F to 240 F	+/- .5 % 2 F	Cooper ATKINS - PD1388 7-6 S/N 4011	9/9/2025	9/9/2026
HUMIDITY	HUMIDITY PROBE	10 % RH to 90 % RH	3% of reading	Cooper ATKINS - SRH77A S/N 071118034	9/9/2025	9/9/2026
ELECTRICAL	VOLTAGE MEASUREMENT	0 VAC to 600 VAC	2 % reading +/- 5 digits	Fluke 373 True RMS, S/N: 33290686	9/8/2025	9/8/2026
	AMPERAGE MEASUREMENT	0 Amperes to 100 Amperes	2 % reading +/- 5 digits	Fluke 373 True RMS, S/N: 33290686	9/8/2025	9/8/2026
ROTATION	ROTATION MEASUREMENT	60 rpm to 5000 rpm	2 % reading 2 rpm	SHIMPO DT-207LR S/N: D1530081R	9/9/2025	9/9/2026
HYDRONIC	PRESSURE MEASUREMENT	-30 in Hg to 200 psi	±2% of reading +/- 1 psi	Evergreen Water Module S/N: 2500210B	8/11/2025	8/11/2026
	DIFFERENTIAL PRESSURE MEASUREMENT	0 psi - 80 psi	±2% of reading +/- 1 psi	Evergreen Water Module S/N: 2500210B	8/11/2025	8/11/2026



Abbreviation List

A = Area (ft ²)	S.F. = Service Factor
AHU = Air Handling Unit	SF = Supply Fan
A _k = Effective Area	SP = Static Pressure
BHP = Brake Horsepower (IP) HP	SR = Supply Register
Btu = British Thermal Unit	T = Temperature
Btu/h = Btuh = BTUH = BTU/Hour	T _{ma} = Mixed Air Temperature
CL = Center Distance (used in belt formula)	T _{oa} = Outside Air Temperature
CD = Ceiling Diffuser	T _{ra} = Return Air Temperature
CF = Correction Factor	H = Head (in wc, ft wc, psi)
CFM = Volumetric Flow: Cubic Feet Per Minute	h = Enthalpy
CO ₂ = Carbon Dioxide	HP = Horsepower
CO = Carbon Monoxide	hr = Hour
C _v = Flow Constant	K _v = Flow constant (SI)
d = Diameter (in.) IP	kW = Kilowatt = 1000 Watts
Δ = Difference or Change (Final - Initial)	LAT = Leaving Air Temperature
DB = Dry Bulb	lb = Pounds
EA = Exhaust Air	LWT = Leaving Water Temperature
EAT = Entering Air Temperature	ma = Mixed Air
EF = Exhaust Fan	MIN = Minimum
Eff = Efficiency	MAX = Maximum
EG = Exhaust Grille	N/A = Not Applicable
ESP = External Static Pressure	NA = No Access
EWT = Entering Water Temperature	NL = Not Listed
°F = Degrees Fahrenheit, °F	NPSHA = Net Positive Suction Head Available
FPB = Fan Powered Box	NS = Not Specified
FLA = Full Load Amps	OA = Outside Air
fpm = Feet per Minute (fpm)	OAT = Outside Air Temperature
ft = Foot	PD = Sheave Pitch Diameter
gal = Gallons	P.D. = Pressure Drop
GPM = Gallons Per Minute (GPM)	PF = Power Factor
h = Enthalpy (BTU/lb dry air)	SG = Supply Grille
P = Pressure	SR = Supply Register
ppm = parts per million	TP = Total Pressure
psi = Pounds Per Square Inch	T _{ra} = Return Air Temperature
psid = PSI Differential	TS = Tip Speed (fpm) IP, (m/s) SI
r = Radius (in)	TSP = Total Static Pressure
% _{ra} = % of Return Air	V = Velocity
RA = Return Air	VAV = Variable Air Volume
RAT = Return Air Temperature	VD = Volume Damper
RF = Return Fan	VFD = Variable Frequency Drive
RG = Return Grille	W = Watt
RH = Relative Humidity	WB = Wet Bulb
RPM = Revolutions Per Minute	wg = wc = water gauge = water column
RTU = Roof Top Unit	WHP = Water Horsepower (IP)
SA = Supply Air	ω = Humidity Ratio



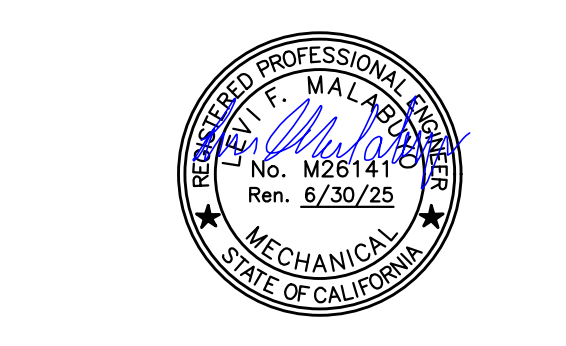
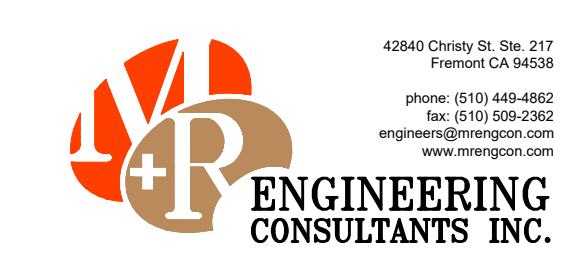
GENERAL NOTES

- A. CONTRACTOR SHALL VERIFY IN THE FIELD FOR EXACT LOCATION OF ALL DUCTING/PIPING AND UTILITIES PRIOR TO START OF WORK. IN THE EVENT OF ANY DISCREPANCIES OR POTENTIAL CONFLICTS, NOTIFY THE ARCHITECT AND ENGINEER IN WRITING PRIOR TO START OF WORK.
- B. ALL DUCTING/PIPING LOCATIONS ARE DIAGRAMMATIC. CONTRACTOR SHALL COORDINATE WITH ALL TRADES AND OWNER'S REPRESENTATIVE AND VERIFY EXACT ROUTING PRIOR TO START OF WORK.
- C. FINAL THERMOSTAT/REMOTE SENSOR SHALL BE COORDINATED WITH THE ARCHITECT AND GENERAL CONTRACTOR FOR APPROVAL PRIOR TO INSTALLATION.
- D. CONTRACTOR SHALL PERFORM AIR BALANCING AS PART OF TESTING AND COMMISSIONING ACTIVITIES OF ALL HVAC SYSTEM AND EQUIPMENT. DURING THE SAID ACTIVITY, ALL SUPPLY AND EXHAUST AIRFLOW RATES SHALL BE VERIFIED IN ACCORDANCE WITH 2022 CMC. AN AIR BALANCE REPORT MUST BE PROVIDED TO AUTHORITIES HAVING JURISDICTION PRIOR TO THE FINAL INSPECTION.
- E. MECHANICAL HOOD SHOULD COMPLY WITH CMC TABLE 508.5.1.2 AND FOR EXTRA-HEAVY-DUTY COOKING ONLY.
- F. PROVIDE YOUNG REGULATOR BALANCING DAMPER AS NEEDED FOR THE DIFFUSER THAT IS NOT ACCESSIBLE FOR BALANCING.
- G. CONTRACTOR TO PROVIDE ACCESS PANEL TO ALL MECHANICAL EQUIPMENTS FOR MAINTENANCE IF NOT READILY ACCESSIBLE. COORDINATE WITH ARCHITECT.
- H. ALL DEEP-FAT FRYERS SHALL BE INSTALLED WITH AT LEAST A 16" SPACE BETWEEN THE FRYER AND SURFACE FLAMES FROM ADJACENT COOKING EQUIPMENT OR A MINIMUM 8" STEEL OR TEMPERED GLASS BATTLE PLATE SHALL BE INSTALLED BETWEEN THE FRYER AND SURFACE FLAMES OF THE ADJACENT APPLIANCE.
- I. ROOFTOP EQUIPMENT SHALL BE PERMANENTLY IDENTIFIED AS TO THE AREA OR SPACE SERVED BY THE EQUIPMENT.

KEY NOTES

- ① 1/2" DOOR UNDERCUT. COORDINATE WITH ARCHITECT.
- ② FAN COIL UNIT MOUNTED ON CEILING. INSTALL AS PER MANUFACTURER'S RECOMMENDATION.
- ③ 8" Ø FRESH AIR INTAKE. PROVIDE 10 FEET CLEARANCE FROM ANY EXHAUST TERMINATION.
- ④ 10" Ø FRESH AIR INTAKE. PROVIDE 10 FEET CLEARANCE FROM ANY EXHAUST TERMINATION.
- ⑤ 12" Ø FRESH AIR INTAKE. PROVIDE 10 FEET CLEARANCE FROM ANY EXHAUST TERMINATION.
- ⑥ 12"x12" EXHAUST AIR RISER. PROVIDE WITH BACKDRAFT DAMPER, AND VENT CAP WITH INSPECT SCREEN. PROVIDE 10 FEET CLEARANCE FROM ANY MECHANICAL INTAKE.
- ⑦ 22"x18" MAKE-UP AIR DUCT RISER. CONNECT TO MUA-1.
- ⑧ 18" Ø KITCHEN EXHAUST DUCT RISER. CONNECT TO KEF-1/KEF-2.
- ⑨ HOOD SUPPLY AIR PLENUM BOX.
- ⑩ PROVIDE WITH DUCT MOUNTED SMOKE DETECTOR IF NONE EXISTING.
- ⑪ PROPOSED 20"x16" SOFFIT. COORDINATE WITH ARCHITECT.
- ⑫ NEW AIR CURTAIN. REFER TO SHEET M0.3 FOR UNIT SPECIFICATION.
- ⑬ EXISTING RTU1/RTU2 SUPPLY AND RETURN RISER TO REMAIN. CONTRACTOR TO VERIFY EXACT LOCATION AND CONDITION ON SITE.
- ⑭ 28-3/4"x14" SUPPLY RISER. CONNECT TO ROOFTOP UNIT.
- ⑮ 36-3/8"x12-5/8" RETURN RISER. CONNECT TO ROOFTOP UNIT.
- ⑯ FCU THERMOSTAT. COORDINATE WITH ARCHITECT. REFER TO DETAIL #5/M3.1 FOR MOUNTING.
- ⑰ RTU THERMOSTAT. PROVIDE IF NONE EXISTING. COORDINATE WITH ARCHITECT. REFER TO DETAIL #5/M3.1 FOR MOUNTING.
- ⑱ ELECTRICAL SINGLE RACK OVEN CANOPY EXHAUST THRU ROOF. INSTALL AS PER MANUFACTURER'S INSTRUCTION.
- ⑲ NEW CO2 SENSOR TO BE PROVIDED. INSTALL AS PER CMC 120.1(d)4.
- ⑳ SINGLE RACK OVEN TYPE-1 HOOD CANOPY OUTLINE.
- ㉑ NEW GAS-FIRED TANKLESS WATER HEATER. REFER TO PLUMBING PLANS FOR UNIT SPECIFICATIONS.
- ㉒ 3" Ø CONCENTRIC VENT THRU ROOF. INSTALL AS PER MANUFACTURER'S RECOMMENDATION.

1 MECHANICAL FLOOR PLAN
M2.1 SCALE: 1/8" = 1'-0"

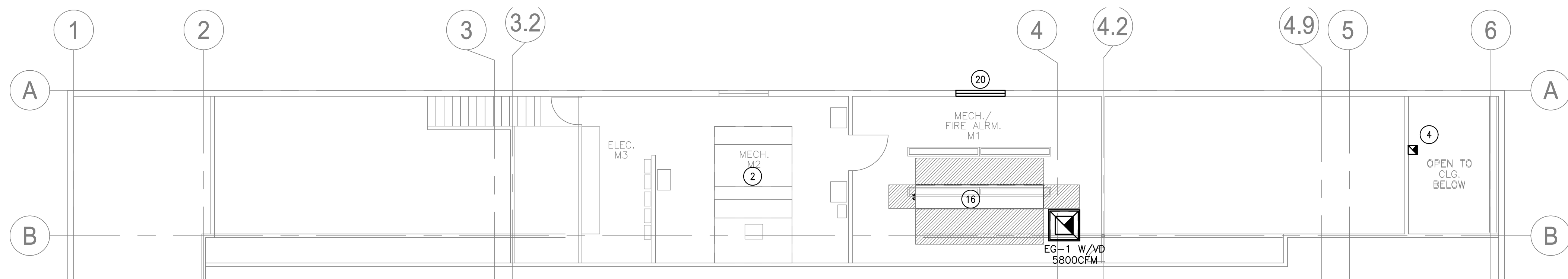


REV	DATE	DESCRIPTION
Δ	10.27.24	AHJ COMMENTS

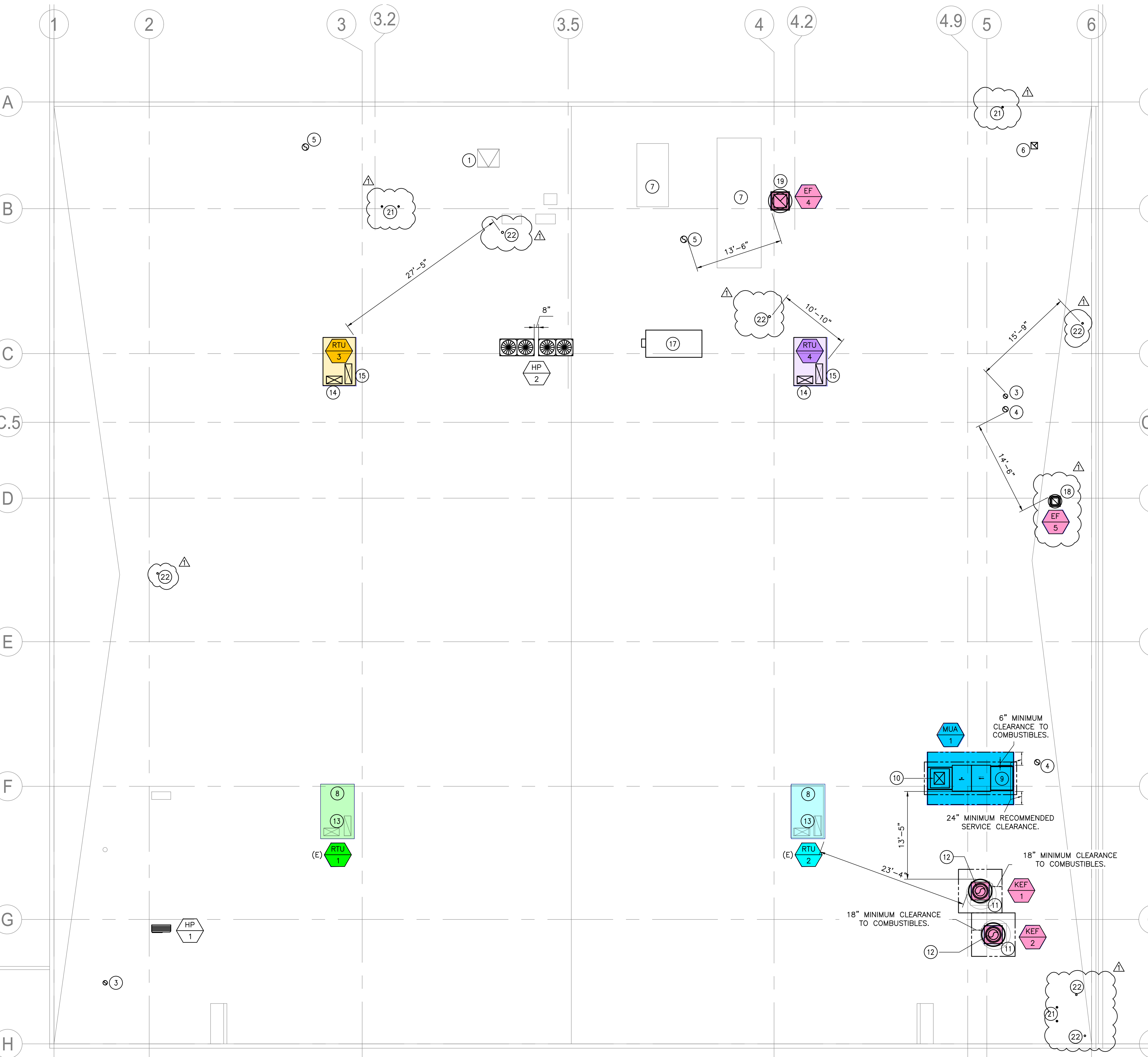
MECHANICAL FLOOR PLAN

DRAWN BY: JKS SCALE: NOTED
CHECKED: HC PROJECT: A2404-AD669

NOV 17, 2024 **M2.1**



1 MECHANICAL MEZZANINE FLOOR PLAN
M2.2 SCALE: 1/8" = 1'-0"



2 MECHANICAL ROOF PLAN
M2.2 SCALE: 1/8" = 1'-0"

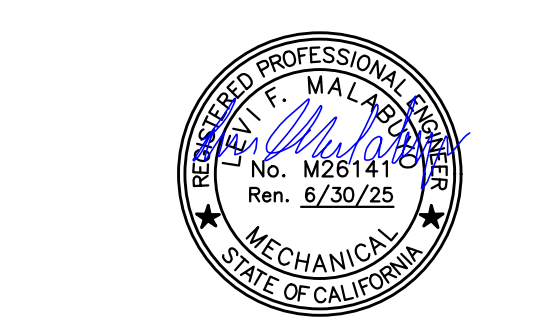
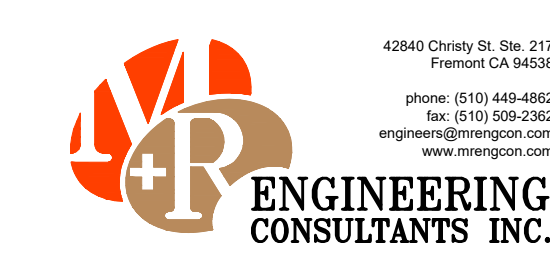


GENERAL NOTES

- A. CONTRACTOR SHALL VERIFY IN THE FIELD FOR EXACT LOCATION OF ALL DUCTING/PIPING AND UTILITIES PRIOR TO START OF WORK. IN THE EVENT OF ANY DISCREPANCIES OR POTENTIAL CONFLICTS, NOTIFY THE ARCHITECT AND ENGINEER IN WRITING PRIOR TO START OF WORK.
- B. ALL DUCTING/PIPING LOCATIONS ARE DIAGRAMMATIC. CONTRACTOR SHALL COORDINATE WITH ALL TRADES AND OWNER'S REPRESENTATIVE AND VERIFY EXACT ROUTING PRIOR TO START OF WORK.
- C. FINAL THERMOSTAT/REMOTE SENSOR SHALL BE COORDINATED WITH THE ARCHITECT AND GENERAL CONTRACTOR FOR APPROVAL PRIOR TO INSTALLATION.
- D. CONTRACTOR SHALL PERFORM AIR BALANCING AS PART OF TESTING AND COMMISSIONING ACTIVITIES OF ALL HVAC SYSTEM AND EQUIPMENT. DURING THE SAID ACTIVITY, ALL SUPPLY AND EXHAUST AIRFLOW RATES SHALL BE VERIFIED IN ACCORDANCE WITH 2022 CMC. AN AIR BALANCE REPORT MUST BE PROVIDED TO AUTHORITIES HAVING JURISDICTION PRIOR TO THE FINAL INSPECTION.
- E. MECHANICAL HOOD SHOULD COMPLY WITH CMC TABLE 508.5.1.2 AND FOR EXTRA-HEAVY-DUTY COOKING ONLY.
- F. PROVIDE YOUNG REGULATOR BALANCING DAMPER AS NEEDED FOR THE DIFFUSER THAT IS NOT ACCESSIBLE FOR BALANCING.
- G. CONTRACTOR TO PROVIDE ACCESS PANEL TO ALL MECHANICAL EQUIPMENTS FOR MAINTENANCE IF NOT READILY ACCESSIBLE. COORDINATE WITH ARCHITECT.
- H. ALL DEEP-FAT FRYERS SHALL BE INSTALLED WITH A MINIMUM 8" STEEL OR TEMPERED GLASS BATTLE PLATE SHALL BE INSTALLED BETWEEN THE FRYER AND SURFACE FLAMES OF THE ADJACENT APPLIANCE.
- I. ROOFTOP EQUIPMENT SHALL BE PERMANENTLY IDENTIFIED AS TO THE AREA OR SPACE SERVED BY THE EQUIPMENT.

KEY NOTES

- 1 EXISTING ROOF HATCH ACCESS
- 2 EXISTING AHU TO BE DEMOLISHED.
- 3 8" Ø FRESH AIR INTAKE. PROVIDE 10 FEET CLEARANCE FROM ANY EXHAUST TERMINATION.
- 4 10" Ø FRESH AIR INTAKE. PROVIDE 10 FEET CLEARANCE FROM ANY EXHAUST TERMINATION.
- 5 12" Ø FRESH AIR INTAKE. PROVIDE 10 FEET CLEARANCE FROM ANY EXHAUST TERMINATION.
- 6 12"x12" EXHAUST AIR RISER. PROVIDE WITH BACKDRAFT DAMPER, AND VENT CAP WITH INSECT SCREEN. PROVIDE 10 FEET CLEARANCE FROM ANY MECHANICAL INTAKE.
- 7 EXISTING ROOF TOP UNIT TO BE DEMOLISHED.
- 8 EXISTING PACKAGED ROOF TOP UNITS TO BE RE-USED. CONTRACTOR TO VERIFY EXACT LOCATION AND CONDITION ON-SITE.
- 9 NEW MAKE-UP AIR UNIT. PLEASE SEE SHEET M0.2 FOR UNIT SPECIFICATION. PROVIDE 10 FEET CLEARANCE FROM ANY EXHAUST TERMINATION.
- 10 22"x19" MAKE-UP AIR DUCT RISER. CONNECT TO MUA-1.
- 11 NEW KITCHEN EXHAUST FAN. PLEASE SEE SHEET M0.2 FOR UNIT SPECIFICATION. PROVIDE 10 FEET CLEARANCE FROM ANY MECHANICAL INTAKE.
- 12 18" Ø KITCHEN EXHAUST DUCT RISER. CONNECT TO KEF-1/KEF-2.
- 13 EXISTING RTU1/RTU2 SUPPLY AND RETURN RISER TO REMAIN. CONTRACTOR TO VERIFY EXACT LOCATION AND CONDITION ON SITE.
- 14 28-3/4"x14" SUPPLY RISER. CONNECT TO ROOFTOP UNIT.
- 15 36-3/8"x12-5/8" RETURN RISER. CONNECT TO ROOFTOP UNIT.
- 16 RACK SYSTEM. NOT PART OF SCOPE.
- 17 ROOFTOP CONDENSER. NOT PART OF SCOPE.
- 18 NEW ROOFTOP EXHAUST FAN SERVING SINGLE RACK OVEN CANOPY EXHAUST. INSTALL AS PER MANUFACTURER'S INSTRUCTION.
- 19 24"x24" EXHAUST AIR RISER CONNECTED TO EF-4. PROVIDE 10 FEET CLEARANCE FROM ANY MECHANICAL INTAKE.
- 20 LOUVERED OPENING. PROVIDE WITH A MINIMUM FREE AREA OF 12 SQUARE FEET. COORDINATE WITH ARCHITECT.
- 21 3" Ø CONCENTRIC VENT THRU ROOF. INSTALL AS PER MANUFACTURER'S RECOMMENDATION.
- 22 PLUMBING VENT. MAINTAIN A MINIMUM 10 FEET CLEARANCE FROM ANY MECHANICAL INTAKE. REFER TO PLUMBING PLANS FOR DETAILS.



REV	DATE	DESCRIPTION
Δ	10.27.24	AHU COMMENTS

MECHANICAL MEZZANINE FLOOR & ROOF PLAN

DRAWN BY: JKS SCALE: NOTED
CHECKED: HC PROJECT: A2404-AD669

National TAB

Project: Chavez Supermarket Improvement (Newark, CA)

System/Unit: AHU/RTU



Asset: RTU-1

AREA:

Unit Data		
	Design	Actual
MFG	NA	DAIKIN
Serial Num	-	1705331890
Model Num	NA	DCH120XXX3VXXXAA
Configuration	VERTICAL	VERTICAL
Num OA Filters 1	-	1
OA Filter Size 1	-	26X16
Num PreFilter 1	-	2
PreFilter Size 1	-	15X48

Test Data		
	Design	Actual
SF CFM	3500	3549
SF RPM	-	772
RA CFM	2350	2418
OA CFM	1150	1131
RL Voltage	208	205/205/205
RL Amperage	6.4	4.6/4.6/4.6
OA Damper Position	-	33%
Brake Horse Power	-	1.43

Motor Data		
	Design	Actual
Motor MFG	-	NIDEC
Frame	-	145T
Horsepower	-	2
Motor Rpm	-	1750
Phase	-	3
Rated Voltage	-	208-230
Rated Amperage	-	6.4
Service Factor	-	1.15

Performance Data		
	Design	Actual
MA Plenum SP	-	-0.31"
Fan Suction SP	-	-0.59"
Fan Discharge SP	-	0.41"
Total ESP	1.00	0.72"
Fan Total SP	-	1.00"

Drive Data	
	Actual
Motor Sheave Size	VL40
Motor Bore Size	7/8"
Motor Sheave SetPt	3 TURNS OPEN
Fan Sheave Size	AK74
Fan Sheave Bore	1"
Belt CL Distance	18"
Num of Belts	1
Belt Size	A50

Completed By: Zack Eismin on 10/23/2025

Unit Data - PHOTO LOG



10/22/2025

National TAB

Project: Chavez Supermarket Improvement (Newark, CA)

AHU/RTU



Diffuser Supply (GRD)

RTU-1/

Asset							
Asset Name	Location	Type	Size	DESIGN CFM	CFM(1)	FINAL CFM	% to design
1-1	SALES FLOOR	CD-5		1050	1047	1047	99.7
1-2	SALES FLOOR	CD-5		1050	1076	1076	102.5
1-3	SALES FLOOR	CD-4		350	347	347	99.1
1-4	SALES FLOOR	CD-4		350	351	351	100.3
1-5	SALES FLOOR	CD-4		350	361	361	103.1
1-6	SALES FLOOR	CD-4		350	367	367	104.9
Total				3500	3549	3549	101.4%

Diffuser Ret/Exh (GRD)

RTU-1/

Asset								
Asset Name	Location	Type	Size	DESIGN CFM	AK	CFM(1)	FINAL CFM	% to design
R1-1		RR-2		2350	1	2418	2418	102.9
Total				2350		2418	2418	102.89%

Completed By: Zack Eismin on 10/23/2025

National TAB

Project: Chavez Supermarket Improvement (Newark, CA)

System/Unit: AHU/RTU



Asset: RTU-2

AREA:

Unit Data		
	Design	Actual
MFG	NA	DAIKIN
Serial Num	-	1708135937
Model Num	NA	DCH120XXX3VXXXAA
Configuration	VERTICAL	VERTICAL
Num OA Filters 1	-	1
OA Filter Size 1	-	26X16
Num PreFilter 1	-	2
PreFilter Size 1	-	15X48

Test Data		
	Design	Actual
SF CFM	3500	3550
SF RPM	-	777
RA CFM	2350	2509
OA CFM	1150	1041
RL Voltage	208	205/205/205
RL Amperage	6.4	4.7/4.7/4.7
OA Damper Position	-	31%
Brake Horse Power	-	1.47

Motor Data		
	Design	Actual
Motor MFG	-	NIDEC
Frame	-	145T
Horsepower	-	2
Motor Rpm	-	1750
Phase	-	3
Rated Voltage	-	208-230
Rated Amperage	-	6.4
Service Factor	-	1.15

Performance Data		
	Design	Actual
MA Plenum SP	-	-0.35"
Fan Suction SP	-	0.59"
Fan Discharge SP	-	0.42"
Total ESP	1.00	0.77"
Fan Total SP	-	1.01"

Drive Data	
	Actual
Motor Sheave Size	VL40
Motor Bore Size	7/8"
Motor Sheave SetPt	3 TURNS OPEN
Fan Sheave Size	AK74
Fan Sheave Bore	1"
Belt CL Distance	18"
Num of Belts	1
Belt Size	A50

Completed By: Zack Eismin on 10/23/2025

Unit Data - PHOTO LOG



10/22/2025

National TAB

Project: Chavez Supermarket Improvement (Newark, CA)

AHU/RTU



Diffuser Supply (GRD)

RTU-2/

Asset							
Asset Name	Location	Type	Size	DESIGN CFM	CFM(1)	FINAL CFM	% to design
2-1		CD-5		1050	1031	1031	98.2
2-2		CD-5		1050	1079	1079	102.8
2-3		CD-4		350	349	349	99.7
2-4		CD-4		350	371	371	106.0
2-5		CD-4		350	361	361	103.1
2-6		CD-4		350	359	359	102.6
Total				3500	3550	3550	101.43%

Diffuser Ret/Exh (GRD)

RTU-2/

Asset								
Asset Name	Location	Type	Size	DESIGN CFM	AK	CFM(1)	FINAL CFM	% to design
R2-1		RR-2		2350	1	2509	2509	106.8
Total				2350		2509	2509	106.77%

Completed By: Zack Eismin on 10/23/2025

National TAB

Project: Chavez Supermarket Improvement (Newark, CA)

System/Unit: AHU/RTU



Asset: RTU-3

AREA:

Unit Data		
	Design	Actual
MFG	NA	DAIKIN
Serial Num	-	2504251796
Model Num	NA	DHH072W
Configuration	VERTICAL	VERTICAL
Num OA Filters 1	-	1
OA Filter Size 1	-	28X16.5
Num PreFilter 1	-	4
PreFilter Size 1	-	20X20X2

Test Data		
	Design	Actual
SF CFM	2700	2709
RA CFM	1920	1948
OA CFM	780	761
RL Voltage	208	205/205/205
RL Amperage	7.7	5.9/5.9/5.9
OA Damper Position	-	30%
Brake Horse Power	-	1.76

Motor Data		
	Design	Actual
Motor MFG	-	BROAD-OCEAN
Frame	-	NL
Horsepower	-	2.3
Motor Rpm	-	1500
Phase	-	3
Rated Voltage	-	208-230
Rated Amperage	-	7.7
Service Factor	-	NL

Performance Data		
	Design	Actual
MA Plenum SP	-	-0.35"
Fan Suction SP	-	-0.61"
Fan Discharge SP	-	0.39"
Total ESP	1.00	0.74"
Fan Total SP	-	1.00"

Completed By: Zack Eismin on 10/23/2025

Unit Data - PHOTO LOG



10/22/2025

National TAB

Project: Chavez Supermarket Improvement (Newark, CA)

AHU/RTU



Diffuser Supply (GRD)

RTU-3/

Asset							
Asset Name	Location	Type	Size	DESIGN CFM	CFM(1)	FINAL CFM	% to design
3-1	SALES FLOOR	CD-5		675	659	659	97.6
3-2		CD-5		675	677	677	100.3
3-3		CD-5		675	691	691	102.4
3-4		CD-5		675	682	682	101.0
Total				2700	2709	2709	100.33%

Diffuser Ret/Exh (GRD)

RTU-3/

Asset								
Asset Name	Location	Type	Size	DESIGN CFM	AK	CFM(1)	FINAL CFM	% to design
R3-1		RR-5		2000	1	1948	1948	97.4
Total				2000		1948	1948	97.4%

Completed By: Zack Eismín on 10/23/2025

National TAB

Project: Chavez Supermarket Improvement (Newark, CA)

System/Unit: AHU/RTU



Asset: RTU-4

AREA:

Unit Data		
	Design	Actual
MFG	NA	DAIKIN
Serial Num	-	2504241047
Model Num	NA	DHH0723W
Configuration	VERTICAL	VERTICAL
Num OA Filters 1	-	1
OA Filter Size 1	-	28X16.5
Num PreFilter 1	-	4
PreFilter Size 1	-	20X20X2

Test Data		
	Design	Actual
SF CFM	2700	2727
RA CFM	1920	1939
OA CFM	780	788
RL Voltage	208	205/205/205
RL Amperage	7.7	6.1/6.1/6.1
OA Damper Position	-	30%
Brake Horse Power	-	1.8

Motor Data		
	Design	Actual
Motor MFG	-	BROAD-OCEAN
Frame	-	NL
Horsepower	-	2.3
Motor Rpm	-	1500
Phase	-	3
Rated Voltage	-	208-230
Rated Amperage	-	7.7
Service Factor	-	NL

Performance Data		
	Design	Actual
MA Plenum SP	-	-0.33"
Fan Suction SP	-	-0.62"
Fan Discharge SP	-	-0.44"
Total ESP	1.00	0.77"
Fan Total SP	-	1.06"

Completed By: Zack Eismin on 10/23/2025

Unit Data - PHOTO LOG



10/22/2025

National TAB

Project: Chavez Supermarket Improvement (Newark, CA)

AHU/RTU



Diffuser Supply (GRD)

RTU-4/

Asset							
Asset Name	Location	Type	Size	DESIGN CFM	CFM(1)	FINAL CFM	% to design
4-1	SALES FLOOR	CD-5		675	688	688	101.9
4-2		CD-5		675	649	649	96.1
4-3		CD-5		675	699	699	103.6
4-4		CD-5		675	691	691	102.4
Total				2700	2727	2727	101%

Diffuser Ret/Exh (GRD)

RTU-4/

Asset								
Asset Name	Location	Type	Size	DESIGN CFM	AK	CFM(1)	FINAL CFM	% to design
R4-1		RR-5		2000	1	1939		-
Total				2000		1939	0	0%

National TAB

Project: Chavez Supermarket Improvement (Newark, CA)

System/Unit: FAN - Exhaust



Asset: EF-2

AREA:110 HALL

Unit Data		
	Design	Actual
MFG	NA	GREENHECK
Model Num	NA	SP-A200-QD
Serial Num	-	26615654
Type	CEILING	CEILING

Test Data		
	Design	Actual
CFM	180	183
System SetPt	-	SINGLE SPEED
Discharge ESP	-	0.31"

Motor Data		
	Design	Actual
Motor MFG	-	GREENHECK
Frame	-	NL
Horsepower	-	NL
Motor Rpm	-	NL
Phase	-	1
Voltage (rated)	-	120
Amperage (rated)	-	0.46
Service Factor	-	NL

Completed By: Zack Eismin on 10/23/2025

Unit Data - PHOTO LOG



10/23/2025

National TAB

Project: Chavez Supermarket Improvement (Newark, CA)

System/Unit: FAN - Exhaust



Asset: EF-3

AREA:116 STORAGE

Unit Data		
	Design	Actual
MFG	NA	PANASONIC
Model Num	NA	FV115VK3
Serial Num	-	50205
Type	CEILING	CEILING

Test Data		
	Design	Actual
CFM	60	63
System SetPt	-	MEDIUM SPEED
Discharge ESP	-	0.13"

Motor Data		
	Design	Actual
Motor MFG	-	NL
Frame	-	NL
Horsepower	-	NL
Motor Rpm	-	NL
Phase	-	1
Voltage (rated)	-	120
Amperage (rated)	-	0.39
Service Factor	-	NL

Completed By: Zack Eismin on 10/23/2025

Unit Data - PHOTO LOG



10/23/2025

National TAB

Project: Chavez Supermarket Improvement (Newark, CA)

System/Unit: FAN - Exhaust



Asset: EF-4

AREA:MECH ROOM

Unit Data		
	Design	Actual
MFG	NA	GREENHECK
Model Num	NA	CUBE-220-15-1-34-X
Serial Num	-	26509407
Type	CRE	CRE

Test Data		
	Design	Actual
CFM	5800	5811
Fan RPM	-	830
Suction ESP	-	-0.71"

Motor Data		
	Design	Actual
Motor MFG	-	BALDOR RELIANCE
Frame	-	56HZ
Horsepower	-	1.5
Motor Rpm	-	1755
Phase	-	3
Voltage (rated)	-	208
Amperage (rated)	-	4.6
Service Factor	-	1.15

Drive Data	
	Actual
Motor Sheave Size	VP34
Motor Bore Size	5/8"
Motor Sheave SetPt	1 TURN OPEN
Fan Sheave Size	AK66
Fan Sheave Bore	1
Belt CL Distance	8"
Num of Belts	1
Belt Size	AX29

Completed By: Zack Eismin on 10/23/2025

Unit Data - PHOTO LOG



10/22/2025

National TAB

Project: Chavez Supermarket Improvement (Newark, CA)

System/Unit: FAN - Exhaust



Asset: EF-5

AREA: SINGLE RACK OVEN

Unit Data		
	Design	Actual
MFG	NA	GREENHECK
Model Num	NA	CUBE-100-4-1-19-X
Serial Num	-	26509441
Type	CRE	CRE

Test Data		
	Design	Actual
CFM	900	879
Fan RPM	-	1231
Suction ESP	-	-0.71"

Motor Data		
	Design	Actual
Motor MFG	-	WEG
Frame	-	56HZ
Horsepower	-	NL
Motor Rpm	-	1760
Phase	-	3
Voltage (rated)	-	208
Amperage (rated)	-	1.1
Service Factor	-	1.15

Drive Data	
	Actual
Motor Sheave Size	VP30
Motor Bore Size	5/8"
Motor Sheave SetPt	3 TURNS OPEN
Fan Sheave Size	AK41
Fan Sheave Bore	3/4"
Belt CL Distance	5-1/4"
Num of Belts	1
Belt Size	3L200R

Completed By: Zack Eismin on 10/23/2025

Unit Data - PHOTO LOG



10/22/2025

National TAB

Project: Chavez Supermarket Improvement (Newark, CA)

System/Unit: FAN - Exhaust



Asset: EF1-1

AREA:113 MENS RR

Unit Data		
	Design	Actual
MFG	NA	GREENHECK
Model Num	NA	SP-A200
Serial Num	-	26489769
Type	CEILING	CEILING

Test Data		
	Design	Actual
CFM	190	181
Motor Frequency	-	N/A
System SetPt	-	SINGLE SPEED
Discharge ESP	-	-0.28"

Motor Data		
	Design	Actual
Motor MFG	-	NL
Frame	-	NL
Horsepower	-	NL
Motor Rpm	-	NL
Phase	-	1
Voltage (rated)	-	120
Amperage (rated)	-	0.46
Service Factor	-	1.0

Completed By: Zack Eismin on 10/23/2025

Unit Data - PHOTO LOG



10/23/2025

National TAB

Project: Chavez Supermarket Improvement (Newark, CA)

System/Unit: FAN - Exhaust



Asset: EF1-2

AREA:115 WOMEN RR

Unit Data		
	Design	Actual
MFG	NA	GREENHECK
Model Num	NA	SP-A200
Serial Num	-	26489770
Type	CEILING	CEILING

Test Data		
	Design	Actual
CFM	190	183
System SetPt	-	SINGLE SPEED
Discharge ESP	-	0.27"
Total ESP	0.35	0.27"

Motor Data		
	Design	Actual
Motor MFG	-	GREENHECK
Frame	-	NL
Horsepower	-	NL
Motor Rpm	-	NL
Phase	-	1
Voltage (rated)	-	115
Amperage (rated)	-	0.46
Service Factor	-	1.0

Completed By: Zack Eismin on 10/23/2025

Unit Data - PHOTO LOG



10/23/2025

National TAB

Project: Chavez Supermarket Improvement (Newark, CA)

System/Unit: FAN - Exhaust



Asset: KEF-1

AREA:H1 HOOD

Unit Data		
	Design	Actual
MFG	NA	CAPTIVEAIRE
Model Num	NA	DU240HFA
Serial Num	-	7200235
Type	CRE	CRE

Test Data		
	Design	Actual
CFM	3319	3317
Motor Frequency	-	45.9HZ
System SetPt	-	45.9HZ
RL Voltage	208	206/206/207
RL Amperage	14.1	9.1/9.0/9.1
Suction ESP	-	-1.41"
Total ESP	2.00	1.41"
Brake Horse Power	-	3.2

Motor Data		
	Design	Actual
Motor MFG	-	TECO
Frame	-	215T
Horsepower	-	5
Motor Rpm	-	1170
Phase	-	3
Voltage (rated)	-	208
Amperage (rated)	-	14.1
Service Factor	-	1.15

Completed By: Zack Eismin on 10/23/2025

Unit Data - PHOTO LOG



10/22/2025

National TAB

Project: Chavez Supermarket Improvement (Newark, CA)

System/Unit: FAN - Exhaust



Asset: KEF-2

AREA:H2 HOOD

Unit Data		
	Design	Actual
MFG	NA	CAPTIVEAIRE
Model Num	NA	DU240HFA
Serial Num	-	7200235
Type	CRE	CRE

Test Data		
	Design	Actual
CFM	3319	3363
Motor Frequency	-	45.9HZ
System SetPt	-	45.9HZ
RL Voltage	208	206/207/206
RL Amperage	14.1	8.9/8.9/8.9
Suction ESP	-	-1.47"
Total ESP	2.00	1.47"
Brake Horse Power	-	3.15

Motor Data		
	Design	Actual
Motor MFG	-	TECO
Frame	-	215T
Horsepower	-	5
Motor Rpm	-	1170
Phase	-	3
Voltage (rated)	-	208
Amperage (rated)	-	14.1
Service Factor	-	1.15

Completed By: Zack Eismin on 10/23/2025

Unit Data - PHOTO LOG



10/22/2025

National TAB

Project: Chavez Supermarket Improvement (Newark, CA)

System/Unit: FAN - Supply



Asset: MUA-1

AREA:

Unit Data		
	Design	Actual
MFG	NA	CAPTIVEAIRE
Model Num	NA	A3-24D
Serial Num	-	7200235
Type	-	MUA
Configuration	-	VERTICAL

Test Data		
	Design	Actual
CFM	5974	6150
SF RPM	1349	1120
Motor Frequency	-	38.3HZ
SF System SetPt	-	38.3HZ
RL Voltage	208	206/206/206
RL Amperage	19.1	11.3/11.3/11.3
Suction ESP	-	-0.59"
Discharge ESP	-	0.41"
Total ESP	0.75	1.0"
Brake Horse Power	-	4.43

Motor Data		
	Design	Actual
Motor MFG	-	TECO
Frame	-	213T
Horsepower	-	7.5
Motor Rpm	-	1755
Phase	-	3
Voltage (rated)	-	208
Amperage (rated)	-	19.1
Service Factor	-	1.15

Completed By: Zack Eismin on 10/23/2025

Unit Data - PHOTO LOG



10/22/2025

National TAB

Project: Chavez Supermarket Improvement (Newark, CA)

System/Unit: Fan Coil



Asset: FCU-1

AREA:127 OFFICE

Unit Data		
	Design	Actual
MFG	NA	DAIKIN
Model Num	NA	FTQ18TVJUAAA
Serial Num	-	2409283138
Num Filters Size 1	-	1
Filter Size 1	-	20X20X1

Motor Data		
	Design	Actual
Motor MFG	-	NL
Frame	-	NL
Horsepower	-	0.5
Motor Rpm	-	NL
Phase	-	1
Voltage (rated)	-	208
Amperage (rated)	-	3.9
Service Factor	-	1.0
Brake Horse Power	-	0.29

Test Data		
	Design	Actual
SFAN CFM	500	545
Motor Speed SetPt	-	MEDIUM SPEED
RL Voltage	208	206
RL Amperage	3.9	2.3
RA CFM	380	414
OA CFM	120	131

Performance Data		
	Design	Actual
Suction ESP	-	-0.31"
Discharge ESP	-	0.27"
Total ESP	0.8	0.58"

Completed By: Zack Eismin on 10/23/2025

Unit Data - PHOTO LOG



10/23/2025

National TAB

Project: Chavez Supermarket Improvement (Newark, CA)

Fan Coil



Diffuser Supply (GRD)

FCU-1/127 OFFICE

Asset							
Asset Name	Location	Type	Size	DESIGN CFM	CFM(1)	FINAL CFM	% to design
F1-1	126 VESTIBULE	CD-1	6	60	140	65	108.3
F1-2	127 OFFICE	CD1	8	220	343	241	109.5
F1-3	128 CASH	CD1	8	220	278	239	108.6
Total				500	761	545	109%

Diffuser Ret/Exh (GRD)

FCU-1/127 OFFICE

Asset								
Asset Name	Location	Type	Size	DESIGN CFM	AK	CFM(1)	FINAL CFM	% to design
RF1-1	127 OFFICE	RR-1	10	190	1	211	206	108.4
RF1-2	128 CASH	RR-1	10	190	1	219	208	109.5
Total				380		430	414	108.95%

Completed By: Zack Eismín on 10/23/2025

National TAB

Project: Chavez Supermarket Improvement (Newark, CA)

System/Unit: Fan Coil



Asset: FCU-2

AREA:

Unit Data		
	Design	Actual
MFG	NA	DAIKIN
Model Num	NA	FXMQ48TBVJU
Serial Num	-	E003091
Num Filters Size 1	-	2
Filter Size 1	-	27X8X4.5

Motor Data		
	Design	Actual
Motor MFG	-	NL
Frame	-	NL
Horsepower	-	0.49
Motor Rpm	-	NL
Phase	-	1
Voltage (rated)	-	208
Amperage (rated)	-	2.9
Service Factor	-	NL
Brake Horse Power	-	0.27

Test Data		
	Design	Actual
SFAN CFM	1200	1297
Motor Speed SetPt	-	MEDIUM SPEED
RL Voltage	208	206
RL Amperage	2.9	1.56
RA CFM	830	908
OA CFM	370	389

Performance Data		
	Design	Actual
Suction ESP	-	-0.44"
Discharge ESP	-	0.37"
Total ESP	1.0	0.81"

Completed By: Zack Eismin on 10/23/2025

Unit Data - PHOTO LOG



10/22/2025

National TAB

Project: Chavez Supermarket Improvement (Newark, CA)

Fan Coil



Diffuser Supply (GRD)

FCU-2/

Asset							
Asset Name	Location	Type	Size	DESIGN CFM	CFM(1)	FINAL CFM	% to design
2-1	HALLWAY	CD-1	10"	300	454	327	109.0
2-2	HALLWAY	CD-1	10"	300	362	319	106.3
2-3	119 PREP	CD-3	5"X17"	300	249	322	107.3
2-4	119 PREP	CD-3	5"X17"	300	344	329	109.7
Total				1200	1409	1297	108.08%

Diffuser Ret/Exh (GRD)

FCU-2/

Asset								
Asset Name	Location	Type	Size	DESIGN CFM	AK	CFM(1)	FINAL CFM	% to design
R2-1		RR-1	16	830	1	837	837	100.8
Total				830		837	837	100.84%

Completed By: Zack Eismen on 10/23/2025

National TAB

Project: Chavez Supermarket Improvement (Newark, CA)

System/Unit: Fan Coil



Asset: FCU-3

AREA:

Unit Data		
	Design	Actual
MFG	NA	DAIKIN
Model Num	NA	FXMQ54TBVJU
Serial Num	-	E001706
Num Filters Size 1	-	2
Filter Size 1	-	27X8X4.5

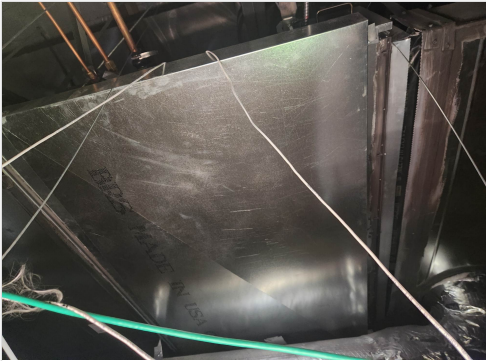
Motor Data		
	Design	Actual
Motor MFG	-	NL
Frame	-	NL
Horsepower	-	0.49
Motor Rpm	-	NL
Phase	-	1
Voltage (rated)	-	208
Amperage (rated)	-	2.9
Service Factor	-	NL
Brake Horse Power	-	

Test Data		
	Design	Actual
SFAN CFM	1400	1339
Motor Speed SetPt	-	HIGH SPEED
RL Voltage	208	206
RL Amperage	2.9	2.3
RA CFM	1040	968
OA CFM	360	371

Performance Data		
	Design	Actual
Suction ESP	-	-0.54"
Discharge ESP	-	0.43"
Total ESP	1.0	0.97"

Completed By: Zack Eismin on 10/23/2025

Unit Data - PHOTO LOG



10/23/2025

National TAB

Project: Chavez Supermarket Improvement (Newark, CA)

Fan Coil



Diffuser Supply (GRD)

FCU-3/

Asset							
Asset Name	Location	Type	Size	DESIGN CFM	CFM(1)	FINAL CFM	% to design
F3-1	118 DELI	CD-1	10	290	349	280	96.6
F3-2	118 DELI	CD-1	10	290	308	287	99.0
F3-3	118 DELI	CD-1	10	290	305	277	95.5
F3-4	113 MENS RR	CD-1	6	100	82	85	85.0
F3-5	111 NURSING	CD-1	6	90	51	88	97.8
F3-6	109 STORAGE	CD-1	6	90	49	81	90.0
F3-7	114 HALL	CD-1	6	140	109	138	98.6
F3-8	115 WOMEN RR	CD-1	6	100	95	103	103.0
Total				1390	1348	1339	96.33%

Diffuser Ret/Exh (GRD)

FCU-3/

Asset								
Asset Name	Location	Type	Size	DESIGN CFM	AK	CFM(1)	FINAL CFM	% to design
RF3-1	118 DELI	RR-1	12	870	1	837	837	96.2
RF3-2	116 STORAGE	RR-1	8	140	1	131	131	93.6
Total				1010		968	968	95.84%

Completed By: Zack Eismin on 10/23/2025

National TAB

Project: Chavez Supermarket Improvement (Newark, CA)

System/Unit: Fan Coil



Asset: FCU-4

AREA:

Unit Data		
	Design	Actual
MFG	NA	DAIKIN
Model Num	NA	FXMQ48TBVJU
Serial Num	-	E003349
Num Filters Size 1	-	2
Filter Size 1	-	27X8X4.5

Test Data		
	Design	Actual
SFAN CFM	1200	1233
Motor Speed SetPt	-	HIGH SPEED
RL Voltage	208	206
RL Amperage	2.9	1.9
RA CFM	1070	1100
OA CFM	130	133

Motor Data		
	Design	Actual
Motor MFG	-	NL
Frame	-	NL
Horsepower	-	0.49
Motor Rpm	-	NL
Phase	-	1
Voltage (rated)	-	208
Amperage (rated)	-	2.9
Service Factor	-	NL
Brake Horse Power	-	0.32

Performance Data		
	Design	Actual
Suction ESP	-	-0.39"
Discharge ESP	-	0.28"
Total ESP	1.0	0.67"

Completed By: Zack Eismin on 10/23/2025

Unit Data - PHOTO LOG



10/23/2025

National TAB

Project: Chavez Supermarket Improvement (Newark, CA)

Fan Coil



Diffuser Supply (GRD)

FCU-4/

Asset							
Asset Name	Location	Type	Size	DESIGN CFM	CFM(1)	FINAL CFM	% to design
F4-1	107 BAKERY	CD-1		600	623	623	103.8
F4-2	107 BAKERY	CD-1		600	610	610	101.7
Total				1200	1233	1233	102.75%

Diffuser Ret/Exh (GRD)

FCU-4/

Asset								
Asset Name	Location	Type	Size	DESIGN CFM	AK	CFM(1)	FINAL CFM	% to design
RF4-1	107 BAKERY	RR-3	16"	1070	1	1100	1100	102.8
Total				1070		1100	1100	102.8%

Completed By: Zack Eismin on 10/23/2025

National TAB

Project: Chavez Supermarket Improvement (Newark, CA)

System/Unit: Fan Coil



Asset: FCU-5

AREA:

Unit Data		
	Design	Actual
MFG	NA	DAIKIN
Model Num	NA	FXMQ48TBVJU
Serial Num	-	E003095
Num Filters Size 1	-	2
Filter Size 1	-	27X8X4.5

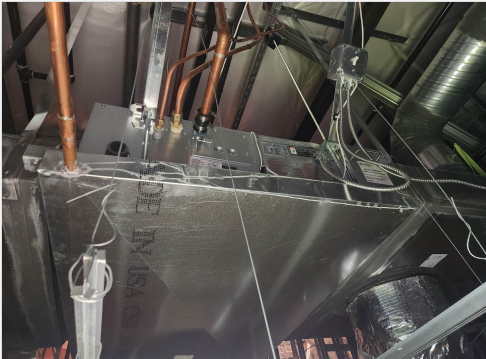
Test Data		
	Design	Actual
SFAN CFM	1200	1249
Motor Speed SetPt	-	HIGH SPEED
RL Voltage	208	206
RL Amperage	2.9	1.95
RA CFM	890	942
OA CFM	310	307

Motor Data		
	Design	Actual
Motor MFG	-	NL
Frame	-	NL
Horsepower	-	0.49
Motor Rpm	-	NL
Phase	-	1
Voltage (rated)	-	208
Amperage (rated)	-	2.9
Service Factor	-	NL
Brake Horse Power	-	0.33

Performance Data		
	Design	Actual
Suction ESP	-	-0.45"
Discharge ESP	-	0.39"
Total ESP	1.0	0.88"

Completed By: Zack Eismin on 10/23/2025

Unit Data - PHOTO LOG



10/23/2025

National TAB

Project: Chavez Supermarket Improvement (Newark, CA)

Fan Coil



Diffuser Supply (GRD)

FCU-5/

Asset							
Asset Name	Location	Type	Size	DESIGN CFM	CFM(1)	FINAL CFM	% to design
F5-1	105 SEATING	CD-1	10	300	310	310	103.3
F5-2	105 SEATING	CD-1	10	300	321	321	107.0
F5-3	105 SEATING	CD-1	10	300	299	299	99.7
F5-4	105 SEATING	CD-1	10	300	319	319	106.3
Total				1200	1249	1249	104.08%

Diffuser Ret/Exh (GRD)

FCU-5/

Asset								
Asset Name	Location	Type	Size	DESIGN CFM	AK	CFM(1)	FINAL CFM	% to design
RF5-1	105 SEATING	RR-3		890	1	942	942	105.8
Total				890		942	942	105.84%

Completed By: Zack Eismin on 10/23/2025

National TAB

Project: Chavez Supermarket Improvement (Newark, CA)

System/Unit: Fan Coil



Asset: FCU-6

AREA:

Unit Data		
	Design	Actual
MFG	NA	DAIKIN
Model Num	NA	FXMQ96TAVJU
Serial Num	-	K000510

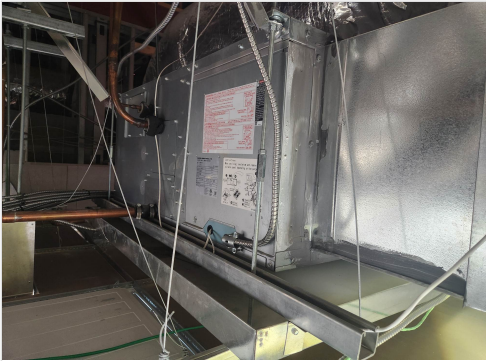
Motor Data		
	Design	Actual
Motor MFG	-	NL
Frame	-	NL
Horsepower	-	NL
Motor Rpm	-	NL
Phase	-	1
Voltage (rated)	-	208
Amperage (rated)	-	5.4
Service Factor	-	NL
Brake Horse Power	-	N/A

Test Data		
	Design	Actual
SFAN CFM	2800	2574
Motor Speed SetPt	-	HIGH SPEED
RL Voltage	208	206
RL Amperage	5.4	4.9
RA CFM	2620	2391
OA CFM	180	183

Performance Data		
	Design	Actual
Suction ESP	-	-0.61"
Discharge ESP	-	0.47"
Total ESP	1.0	1.08"

Completed By: Zack Eismin on 10/23/2025

Unit Data - PHOTO LOG



10/23/2025

National TAB

Project: Chavez Supermarket Improvement (Newark, CA)

Fan Coil



Diffuser Supply (GRD)

FCU-6/

Asset							
Asset Name	Location	Type	Size	DESIGN CFM	CFM(1)	FINAL CFM	% to design
F6-1	104 TAQUERIA	CD-2	18	1400	1283	1283	91.6
F6-2	104 TAQUERIA	CD-2	18	1400	1291	1291	92.2
Total				2800	2574	2574	91.93%

Diffuser Ret/Exh (GRD)

FCU-6/

Asset								
Asset Name	Location	Type	Size	DESIGN CFM	AK	CFM(1)	FINAL CFM	% to design
RF6-1		RR-4		2620	1	2068	2391	91.3
Total				2620		2068	2391	91.26%

National TAB

Project: Chavez Supermarket Improvement (Newark, CA)

System/Unit: Kitchen Hood Type I



Asset: H-1

AREA:

Unit Data		
	Design	Actual
MFG	NA	CAPTIVEAIRE
Model Num	NA	5424 ND-2
Job / Serial Num	-	7200235
Type	TYPE I CANOPY	TYPE I CANOPY
Hood length	177	177
Hood Width	54	54
Supply Plenum Type	-	PSP
Supply Plenum Width	18	18
Supply Plenum Length	189	189

Test Data Exhaust		
	Design	Actual
Filter Type	CAPTRATE SOLO	CAPTRATE SOLO
Filter Size 1	20X16	20X16
Filter Qty 1	11	11
Filter AK factor size 1	1.16	2.08
Filter Total AK Area	12.76	22.88
Filter1 FPM	-	124
Filter2 FPM	-	138
Filter3 FPM	-	138
Filter4 FPM	-	146
Filter5 FPM	-	186
Filter6 FPM	-	210
Filter7 FPM	-	163
Filter8 FPM	-	140
Filter9 FPM	-	125
Filter10 FPM	-	112
Filter11 FPM	-	116
Filter Ave FPM(corr)	-	145
CFM	3319	3317

Cooking Equipment	
	Actual
Item 1	TOASTER
Item 2	FLAT TOP GRILL
Item 3	SPIT
Item 4	GRILL
Item 5	GRILL

Test Data Supply		
	Design	Actual
Total Area	23.63	23.63
Kv factor (Vel)	0.91	0.91
Num of Readings	-	12
Reading1 FPM	-	143
Reading2 FPM	-	121
Reading3 FPM	-	134
Reading4 FPM	-	120
Reading5 FPM	-	138
Reading6 FPM	-	156
Reading7 FPM	-	132
Reading8 FPM	-	172
Reading9 FPM	-	178
Reading10 FPM	-	146
Reading11 FPM	-	167
Reading12 FPM	-	187
Ave FPM(corr)	-	149
CFM	2987	3204

Completed By: Zack Eismin on 10/23/2025

Unit Data - PHOTO LOG



10/22/2025

National TAB

Project: Chavez Supermarket Improvement (Newark, CA)

System/Unit: Kitchen Hood Type I



Asset: H-2

AREA:

Unit Data		
	Design	Actual
MFG	NA	CAPTIVEAIRE
Model Num	NA	5424 ND-2
Job / Serial Num	-	7200235
Type	TYPE I CANOPY	TYPE I CANOPY
Hood length	177	177
Hood Width	54	54
Supply Plenum Type	-	PSP
Supply Plenum Width	18	18
Supply Plenum Length	189	189"

Test Data Supply		
	Design	Actual
Total Area	23.63	23.63
Kv factor (Vel)	0.91	0.91
Num of Readings	-	12
Reading1 FPM	-	180
Reading2 FPM	-	135
Reading3 FPM	-	141
Reading4 FPM	-	131
Reading5 FPM	-	133
Reading6 FPM	-	146
Reading7 FPM	-	131
Reading8 FPM	-	133
Reading9 FPM	-	133
Reading10 FPM	-	123
Reading11 FPM	-	125
Reading12 FPM	-	137
Ave FPM(corr)	-	137
CFM	2987	2946

Test Data Exhaust		
	Design	Actual
Filter Type	CAPTRATE SOLO	CAPTRATE SOLO
Filter Size 1	20X16	20X16
Filter Qty 1	11	11
Filter AK factor size 1	1.16	2.08
Filter Total AK Area	12.76	22.88
Filter1 FPM	-	148
Filter2 FPM	-	128
Filter3 FPM	-	129
Filter4 FPM	-	154
Filter5 FPM	-	185
Filter6 FPM	-	187
Filter7 FPM	-	177
Filter8 FPM	-	147
Filter9 FPM	-	131
Filter10 FPM	-	115
Filter11 FPM	-	124
Filter Ave FPM(corr)	-	147
CFM	3319	3363

Cooking Equipment	
	Actual
Item 1	BURNER
Item 2	STOVE RANGE
Item 3	FRYER

Completed By: Zack Eismin on 10/23/2025

Unit Data - PHOTO LOG



10/23/2025