

HOOD INFORMATION - JOB#5126207

| HOOD NO | TAG | MODEL | MANUFACTURER | LENGTH | MAX COOKING TEMP | TYPE | APPLIANCE DUTY | DESIGN CFM/FT | TOTAL EXH CFM | EXHAUST PLENUM RISER(S) | | | | HOOD CONSTRUCTION | HOOD CONFIG | | | | |
|---------|-----------|-------------|--------------|----------|------------------|------|----------------|---------------|---------------|-------------------------|------|--------|-----|-------------------|-------------|---------|----------------------|------------|-------|
| | | | | | | | | | | WIDTH | LENG | HEIGHT | DIA | | CFM | VEL | SP | END TO END | ROW |
| 1 | HD1-Grill | 3650 BD-2 | CAPTIVEAIRE | 6' 0" | 600 DEG | I | HEAVY | 175 | 1050 | 10" | 10" | 4" | | 1050 | 1512 | -0.662" | 430 SS WHERE EXPOSED | ALONE | ALONE |
| 2 | HD2-Oven | 4412 PS-Ovn | | 1' 9.25" | 300 Deg. | I | Light | 200 | 600 | 8" | 8" | 4" | | 600 | 1500 | -0.376" | 430 SS 100% | ALONE | ALONE |
| 3 | HD3-Fry | 3650 BD-2 | CAPTIVEAIRE | 4' 2" | 600 DEG | I | HEAVY | 192 | 800 | 9" | 8" | 4" | | 800 | 1600 | -0.706" | 430 SS WHERE EXPOSED | ALONE | ALONE |

FOR QUESTIONS, CALL THE CAPTIVE-AIRE (TRI-STATE) OFFICE
 1329 E. KEMPER RD., SUITE 4210
 PHONE: (513) 860-5555
 joe.hertenstein@captivaire.com

HOOD INFORMATION

| HOOD NO | TAG | FILTER(S) | | | | LIGHT(S) | | | | UTILITY CABINET(S) | | | | FIRE SYSTEM PIPING | HOOD HANGING WEIGHT | |
|---------|-----------|----------------------|-----|--------|--------|------------------------|-----|----------------|------------|--------------------|-------------|------------------|---------|--------------------|---------------------|--------------------|
| | | TYPE | QTY | HEIGHT | LENGTH | EFFICIENCY @ 7 MICRONS | QTY | TYPE | WIRE GUARD | LOCATION | SIZE | FIRE SYSTEM TYPE | SIZE | | | ELECTRICAL MODEL # |
| 1 | HD1-Grill | CAPTRATE SOLO FILTER | 4 | 16" | 16" | 85% SEE FILTER SPEC | 3 | L55 SERIES E26 | NO | | | | | | 249 LBS | |
| 2 | HD2-Oven | SS Baffle w/ Handles | 2 | 10" | 20" | 30% | 0 | | | | | | | 248 LBS | | |
| 3 | HD3-Fry | CAPTRATE SOLO FILTER | 3 | 16" | 16" | 85% SEE FILTER SPEC | 2 | L55 SERIES E26 | NO | WALL MNT | 12"x48"x24" | ANSUL R102 | 3.0/3.0 | SC-130220MA_MA4 | 2 LIGHT 2 FAN | 226 LBS |

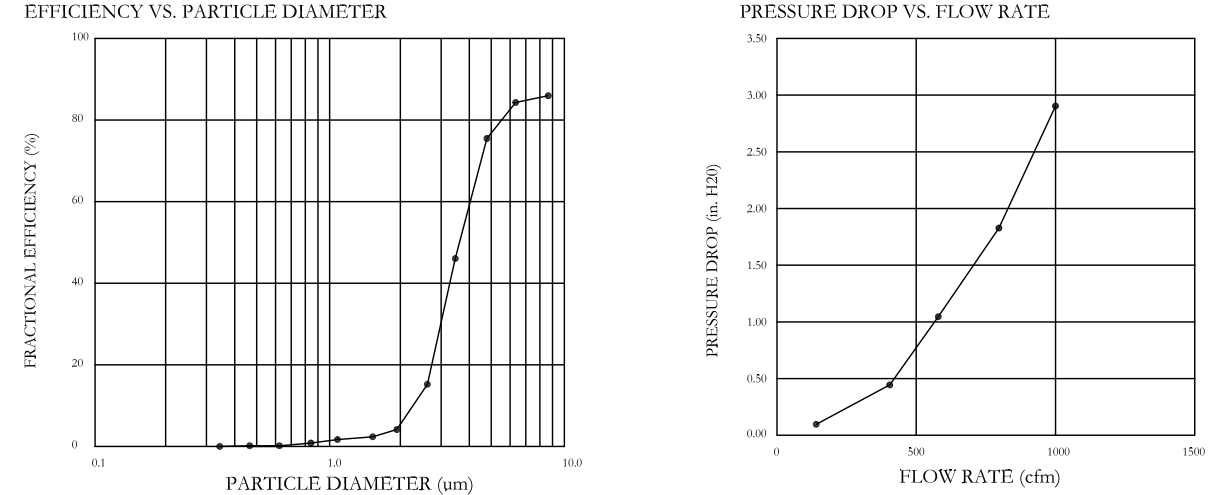
HOOD OPTIONS

| HOOD NO | TAG | OPTION |
|---------|-----------|--|
| 1 | HD1-Grill | FIELD WRAPPER 14.50" HIGH FRONT, LEFT, RIGHT. |
| | | RIGHT QUARTER END PANEL 26" TOP WIDTH, 0" BOTTOM WIDTH, 26" HIGH 430 SS. |
| | | LEFT QUARTER END PANEL 26" TOP WIDTH, 0" BOTTOM WIDTH, 26" HIGH 430 SS. SENSOR-CV. |
| 2 | HD3-Fry | FIELD WRAPPER 14.50" HIGH FRONT, LEFT, RIGHT. |
| | | RIGHT QUARTER END PANEL 26" TOP WIDTH, 0" BOTTOM WIDTH, 26" HIGH 430 SS. |
| | | LEFT VERTICAL END PANEL 26" TOP WIDTH, 26" BOTTOM WIDTH, 61" HIGH INSULATED 430 SS. SENSOR-CV. |

SPECIFICATION: CAPTRATE GREASE-STOP SOLO FILTER

THE CAPTRATE GREASE-STOP SOLO FILTER IS A SINGLE-STAGE FILTER FEATURING A UNIQUE S-Baffle DESIGN IN CONJUNCTION WITH A SLOTTED REAR Baffle DESIGN, TO DELIVER EXCEPTIONAL FILTRATION EFFICIENCY. FILTER IS STAINLESS STEEL CONSTRUCTION, AND SIZED TO FIT INTO STANDARD 2-INCH DEEP HOOD CHANNEL(S). UNITS SHALL INCLUDE STAINLESS STEEL HANDLES AND A FASTENING DEVICE TO SECURE THE TWO COMPONENTS WHEN ASSEMBLED. GREASE EXTRACTION EFFICIENCY PERFORMANCE SHALL REMOVE AT LEAST 75% OF GREASE PARTICLES FIVE MICRONS IN SIZE, AND 85% GREASE PARTICLES SEVEN MICRONS IN SIZE AND LARGER, WITH A CORRESPONDING PRESSURE DROP NOT TO EXCEED 1.0 INCHES OF WATER GAUGE.

THE CAPTRATE GREASE-STOP SOLO WAS TESTED TO ASTM STANDARD ASTM F2519-05.



CAPTIVE FILTERS ARE BUILT IN COMPLIANCE WITH:
 NFPA #86
 NSF STANDARD #2
 UL STANDARD #1046
 INT. MECH. CODE (MC)
 ULC-5649



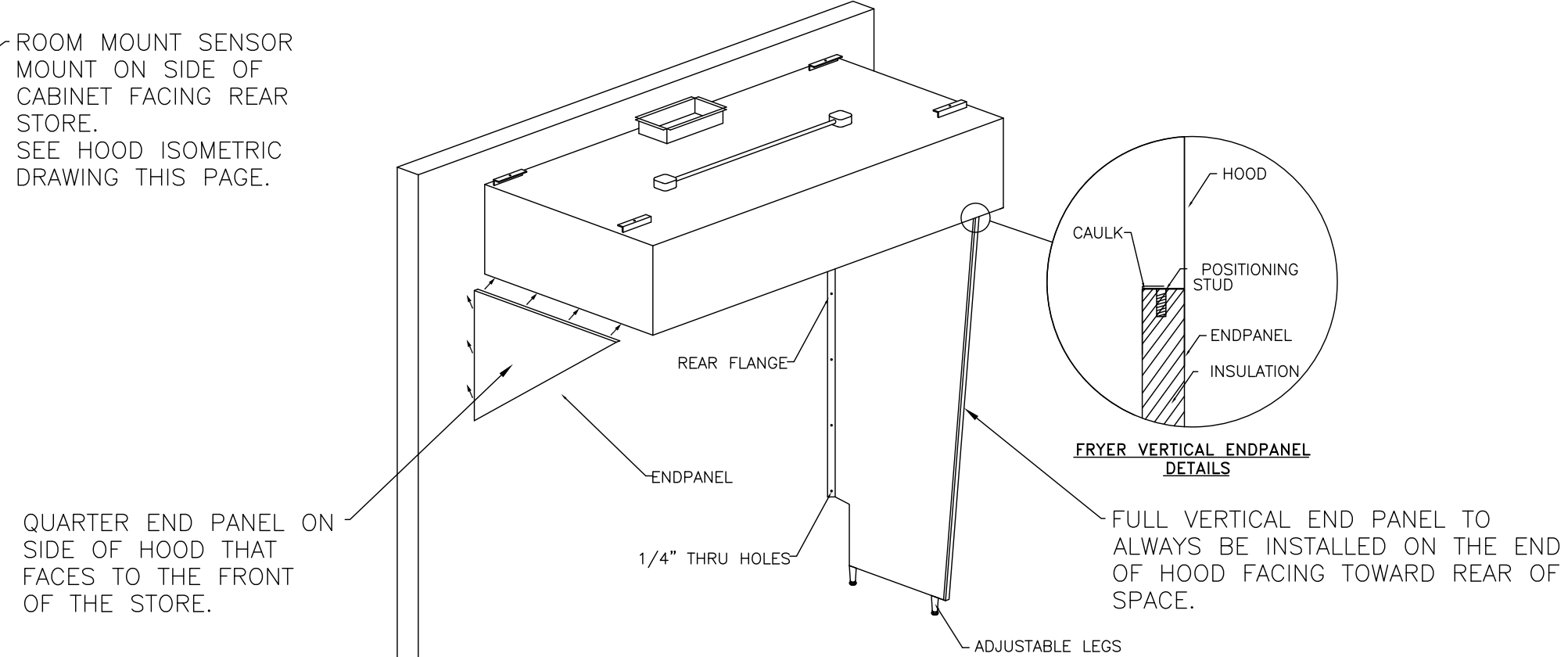
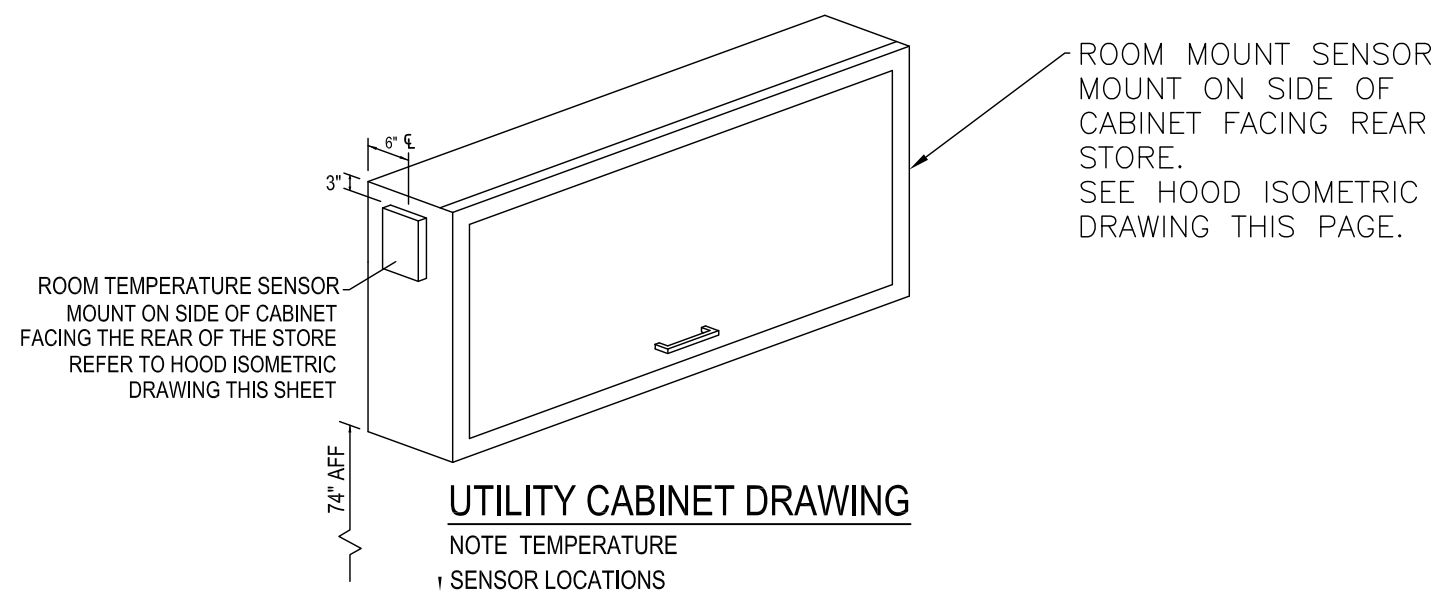
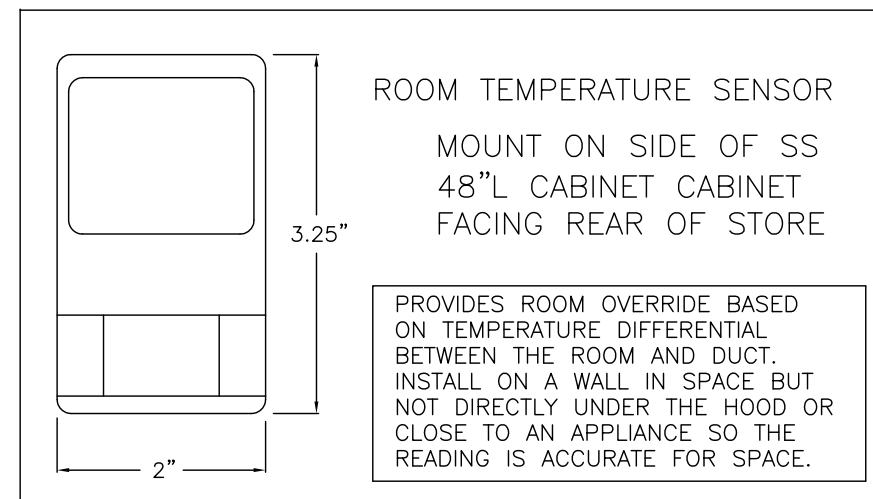
WALL-MOUNT UTILITY CABINET

| HOOD NO | LOCATION | SIZE | UTILITY CABINET(S) | | | | WEIGHT |
|---------|----------|-------------|--------------------|---------|--------------------|-------------------|------------|
| | | | FIRE SYSTEM TYPE | SIZE | ELECTRICAL MODEL # | SWITCHES QUANTITY | |
| 2 | WALL MNT | 12"x48"x24" | ANSUL R102 | 3.0/3.0 | SC-130220MA_MA4 | 2 LIGHT 2 FAN | 254.00 LBS |

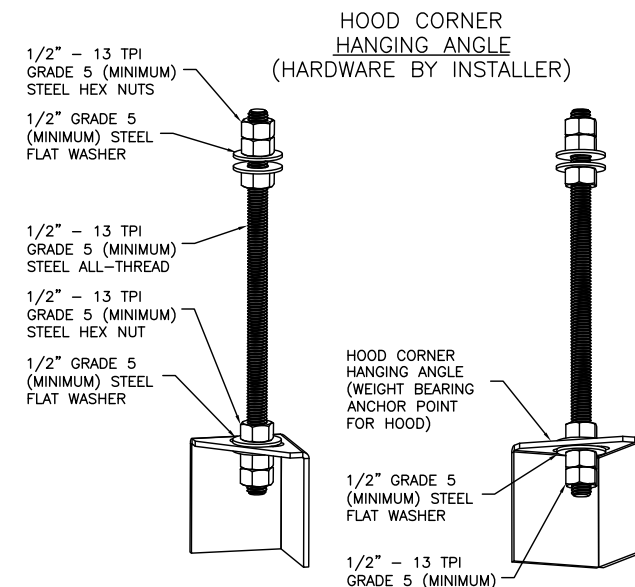
CAS VALVE(S)

| FIRE SYSTEM NO | TAG | TYPE | SIZE | SUPPLIED BY |
|----------------|------|------------|-------|---------------------|
| 1 | FS-1 | MECHANICAL | 1.250 | CAPTIVEAIRE SYSTEMS |

LOCATED IN 48"L X24"H 12" SS CABINET MOUNTED NEXT TO GRILL HOOD



(FRYER HOOD)



ASSEMBLY INSTRUCTIONS

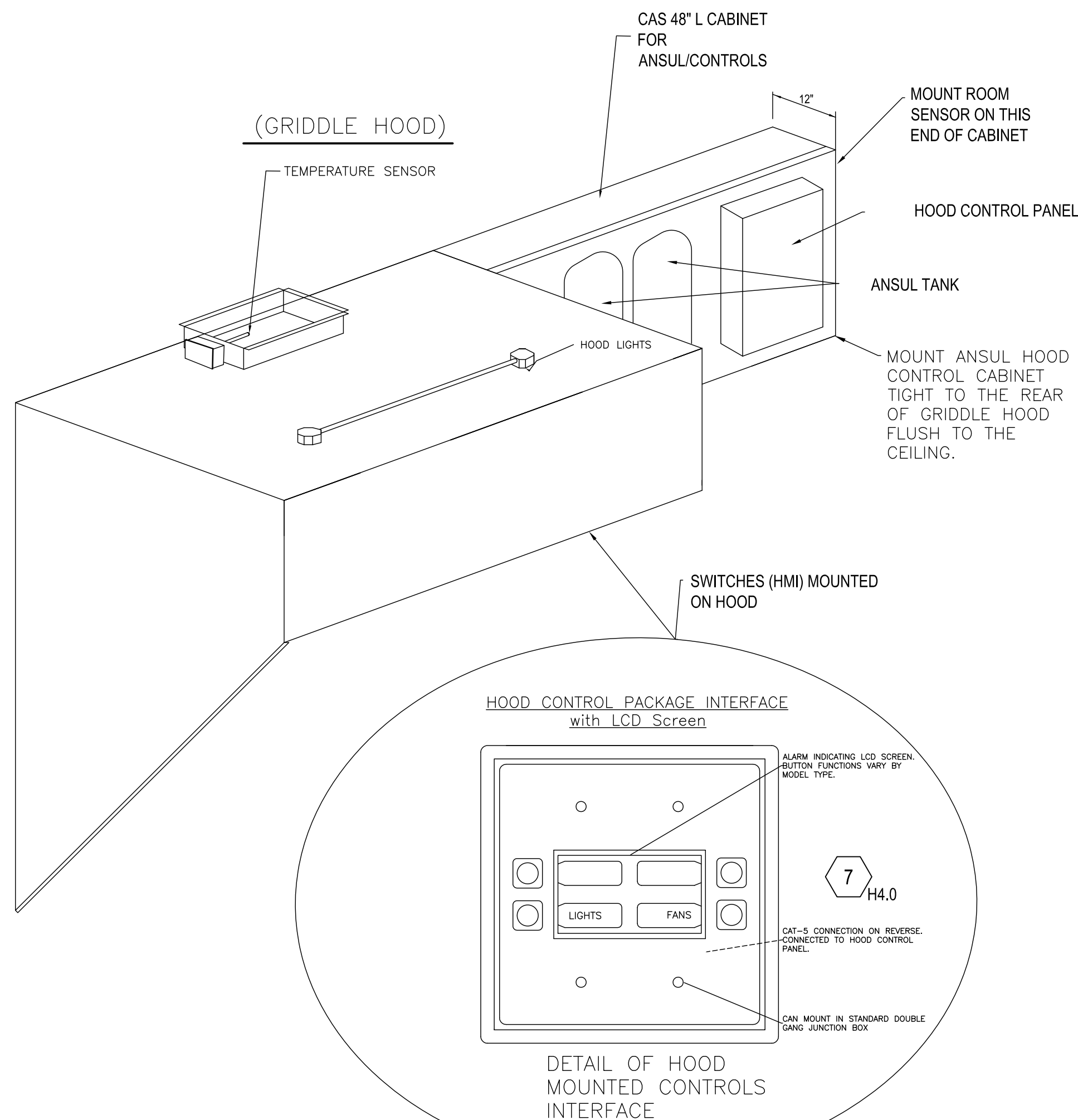
HANGING ANGLE MUST BE SUPPORTED WITH 1/2" - 13 TPI GRADE 5 (MINIMUM) ALL-THREAD, SANDWICH HANGING ANGLES AND CEILING ANCHOR POINTS WITH 1/2" GRADE 5 (MINIMUM) STEEL FLAT WASHERS AND 1/2" - 13 TPI GRADE 5 (MINIMUM) HEX NUTS AS SHOWN. MUST USE DOUBLED HEX NUT CONFIGURATION BENEATH HOOD HANGING ANGLES AND ABOVE CEILING ANCHORS. MAINTAIN 1/4" OF EXPOSED THREADS BENEATH BOTTOM HEX NUT. TORQUE ALL HEX NUTS TO 57 FT-LBS.

CAPTIVE-AIRE HOODS ARE BUILT IN COMPLIANCE WITH UL 710 AND NFPA 96 AND ARE RECOGNIZED BY ONE OR MORE OF THE FOLLOWING:

ETL SANITATION LISTED
 ETL LISTED FILE# 3054804-001

HOOD SYSTEM IS FABRICATED & DESIGNED PER UL-710 STANDARDS

GENERAL WIRING COMPONENTS ONLY (MUST READ ALL DETAILED DIRECTIONS ON THE CAPTIVE-AIRE ELECTRICAL DWG SHEET PROVIDED)



REVISIONS

| DESCRIPTION | DATE: |
|-------------|-------|
| | |
| | |
| | |

CAPTIVE-AIRE

Penn Station v2BRD2

SHELBYVILLE, KY, 40065

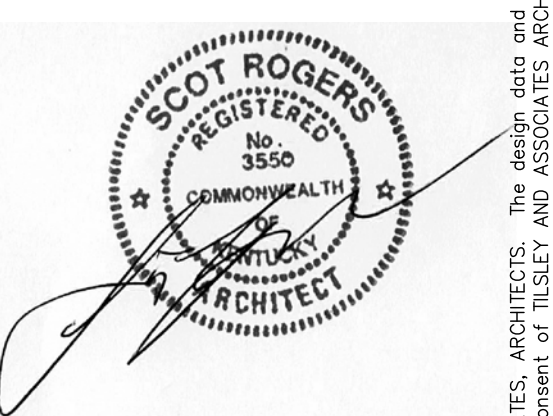
DATE: 10/7/2021
DWG.#: 5126207
DRAWN BY:
SCALE: 3/4" = 1'-0"
MASTER DRAWING

SHEET NO. 1



TILSLEY ARCHITECTS
 1140 SAINT GREGORY ST. CINCINNATI, OH 45202
 TEL: 513.851.4300
 WWW.TILSLEYARCHITECTS.COM

A New Penn Station Restaurant
 McManan Plaza
 3067 Breckenridge Ln.
 Louisville, KY 40220



Sheet Title: **Captiveaire Shop**
 Drawings Issued: 11-12-21
 Scale: As Noted
 Drawn: S. Rogers
 21036 PS Breckenridge, KY

EXHAUST FAN INFORMATION — JOB#5126207

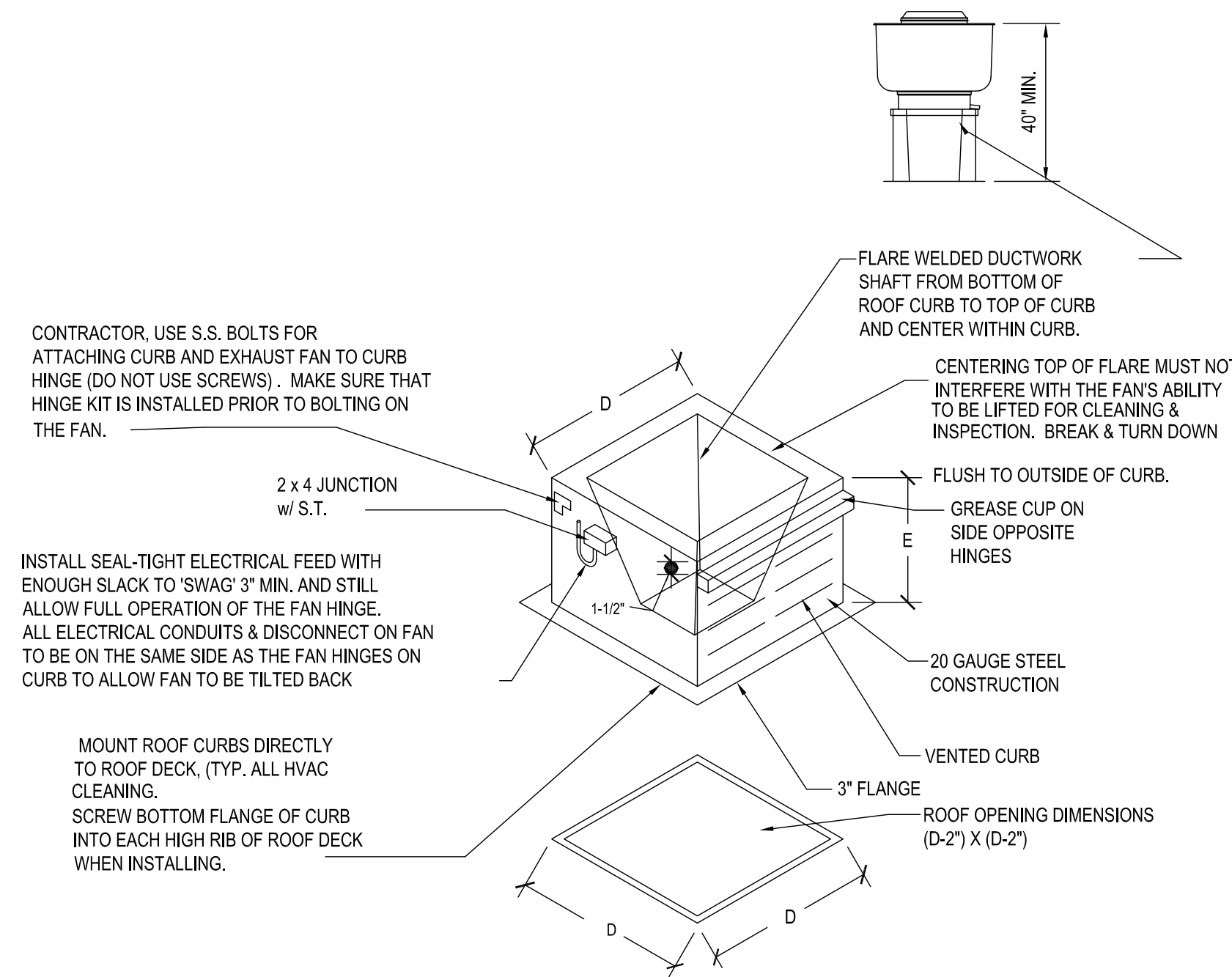
| FAN UNIT NO | TAG | QTY | FAN UNIT MODEL # | MANUFACTURER | CFM | ESP | RPM | MOTOR ENCL | HP | BHP | PHASE | VOLT | FLA | DISCHARGE VELOCITY | WEIGHT (LBS) | SONES |
|-------------|--------------|-----|------------------|--------------|------|-------|------|------------|-------|--------|-------|------|-----|--------------------|--------------|-------|
| 1 | EF-1 (GRILL) | 1 | DUB5HFA | CAPTIVEAIRE | 1050 | 1.150 | 1199 | TEAO-ECM | 0.750 | 0.3280 | 1 | 115 | 8.9 | 332 FPM | 89 | 9.9 |
| 2 | KEF2 (OVEN) | 1 | DU33HFA | CAPTIVEAIRE | 600 | 0.600 | 1296 | TEAO-ECM | 0.333 | 0.1420 | 1 | 115 | 4.3 | 297 FPM | 70 | 11.5 |
| 3 | KEF3 (FRY) | 1 | DUB5HFA | CAPTIVEAIRE | 800 | 1.200 | 1210 | TEAO-ECM | 0.750 | 0.3090 | 1 | 115 | 8.9 | 253 FPM | 89 | 10.1 |

CURB ASSEMBLIES

| NO. | ON FAN | TAG | WEIGHT | ITEM | (D) x (D) x (E) SIZE | LOCATION |
|-----|--------|----------------|--------|------|--------------------------------|-------------------------------|
| 1 | # 1 | KEF1 — GRIDDLE | 44 LBS | Curb | 23.000"W x 23.000"L x 30.000"H | Vented Hinged Grill Hood Curb |
| 2 | # 2 | KEF2 — OVEN | 38 LBS | Curb | 19.500"W x 19.500"L x 30.000"H | Vented Hinged Oven Hood Curb |
| 3 | # 3 | KEF3 — FRYER | 44 LBS | Curb | 23.000"W x 23.000"L x 30.000"H | Vented Hinged Fryer Hood Curb |

FAN ACCESSORIES

| FAN UNIT NO | TAG | EXHAUST | | | | SUPPLY | | |
|-------------|--------------|------------|----------------|------------|----------------|----------------|------------------|------------|
| | | GREASE CUP | GRAVITY DAMPER | WALL MOUNT | SIDE DISCHARGE | GRAVITY DAMPER | MOTORIZED DAMPER | WALL MOUNT |
| 1 | EF-1 (GRILL) | YES | | | | | | |
| 2 | KEF2 (OVEN) | YES | | | | | | |
| 3 | KEF3 (FRY) | YES | | | | | | |



TYPICAL ROOF CURB DETAIL

FAN OPTIONS

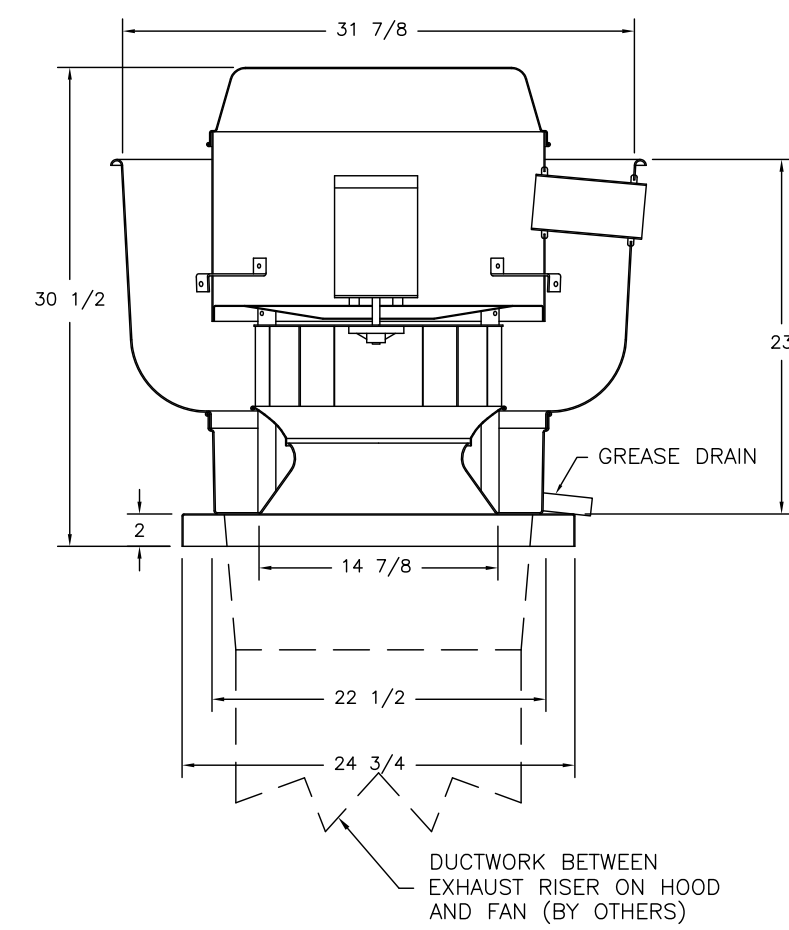
| FAN UNIT NO | TAG | QTY | DESCRIPTION |
|-------------|--------------|-----|--|
| 1 | EF-1 (GRILL) | 1 | GREASE BOX. |
| | | 1 | EXHAUST FAN HEAT BAFFLE. |
| 2 | KEF2 (OVEN) | 1 | ECM WIRING PACKAGE — PWM SIGNAL FROM ECPM03 PREWIRE (TELCO MOTOR), CCW ROTATION. |
| | | 1 | GREASE BOX. |
| 3 | KEF3 (FRY) | 1 | EXHAUST FAN HEAT BAFFLE. |
| | | 1 | ECM WIRING PACKAGE — PWM SIGNAL FROM ECPM03 PREWIRE (TELCO MOTOR), CCW ROTATION. |

6 H4.0

6 H4.0

6 H4.0

FAN #1 DUB5HFA — EXHAUST FAN (KEF1)



FEATURES:

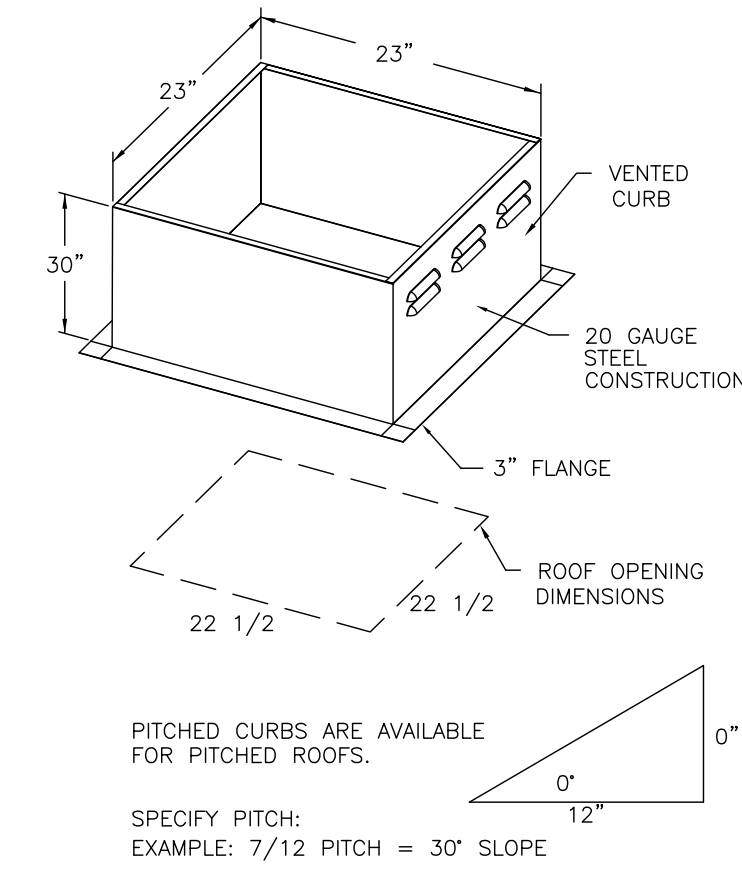
- DIRECT DRIVE CONSTRUCTION (NO BELTS/PULLEYS)
- ROOF MOUNTED FANS
- RESTAURANT MODEL
- UL705 AND UL762 AND ULC-8645
- VARIABLE SPEED CONTROL
- INTERNAL WIRING
- WEATHERPROOF DISCONNECT
- THERMAL OVERLOAD PROTECTION (SINGLE PHASE)
- HIGH HEAT OPERATION 300°F (149°C)
- GREASE CLASSIFICATION TESTING

NORMAL TEMPERATURE TEST
EXHAUST FAN MUST OPERATE CONTINUOUSLY WHILE EXHAUSTING AIR AT 300°F (149°C) UNTIL ALL FAN PARTS HAVE REACHED THERMAL EQUILIBRIUM, AND WITHOUT ANY DETRIMENTARY EFFECTS TO THE FAN WHICH WOULD CAUSE UNSAFE OPERATION.

ABNORMAL FLARE-UP TEST
EXHAUST FAN MUST OPERATE CONTINUOUSLY WHILE EXHAUSTING BURNING GREASE VAPORS AT 600°F (316°C) FOR A PERIOD OF 15 MINUTES WITHOUT THE FAN BECOMING DAMAGED TO ANY EXTENT THAT COULD CAUSE AN UNSAFE CONDITION.

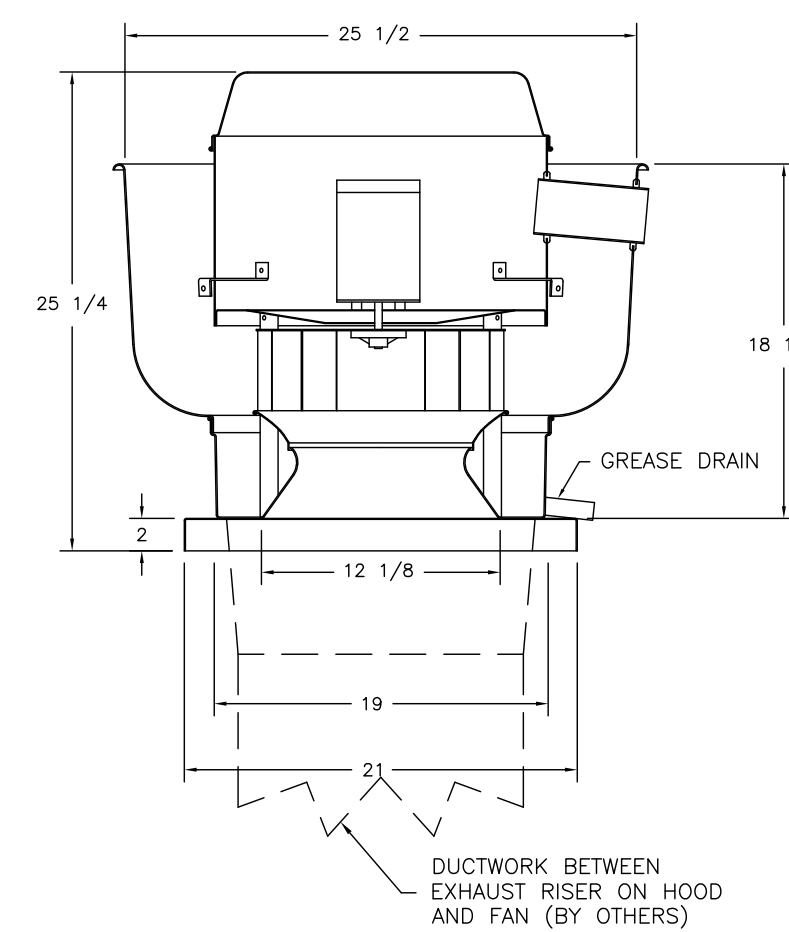
OPTIONS

- GREASE BOX.
- EXHAUST FAN HEAT BAFFLE.
- FAN BASE CERAMIC SEAL — INSTALLED AT PLANT — FOR GREASE DUCTS.
- ECM WIRING PACKAGE—EXHAUST — PWM SIGNAL FROM ECPM03 PREWIRE (NIDEC MOTOR).



PITCHED CURBS ARE AVAILABLE FOR PITCHED ROOFS.
SPECIFY PITCH:
EXAMPLE: 7/12 PITCH = 30° SLOPE

FAN #2 DU33HFA — EXHAUST FAN (KEF2)



FEATURES:

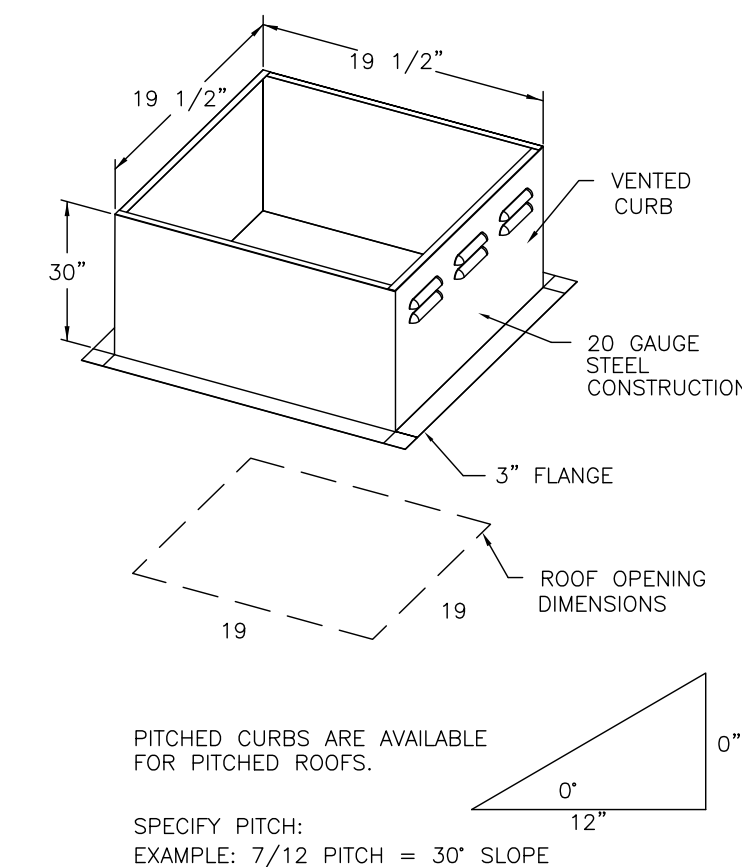
- DIRECT DRIVE CONSTRUCTION (NO BELTS/PULLEYS)
- ROOF MOUNTED FANS
- RESTAURANT MODEL
- UL705 AND UL762 AND ULC-8645
- VARIABLE SPEED CONTROL
- INTERNAL WIRING
- WEATHERPROOF DISCONNECT
- THERMAL OVERLOAD PROTECTION (SINGLE PHASE)
- HIGH HEAT OPERATION 300°F (149°C)
- GREASE CLASSIFICATION TESTING

NORMAL TEMPERATURE TEST
EXHAUST FAN MUST OPERATE CONTINUOUSLY WHILE EXHAUSTING AIR AT 300°F (149°C) UNTIL ALL FAN PARTS HAVE REACHED THERMAL EQUILIBRIUM, AND WITHOUT ANY DETRIMENTARY EFFECTS TO THE FAN WHICH WOULD CAUSE UNSAFE OPERATION.

ABNORMAL FLARE-UP TEST
EXHAUST FAN MUST OPERATE CONTINUOUSLY WHILE EXHAUSTING BURNING GREASE VAPORS AT 600°F (316°C) FOR A PERIOD OF 15 MINUTES WITHOUT THE FAN BECOMING DAMAGED TO ANY EXTENT THAT COULD CAUSE AN UNSAFE CONDITION.

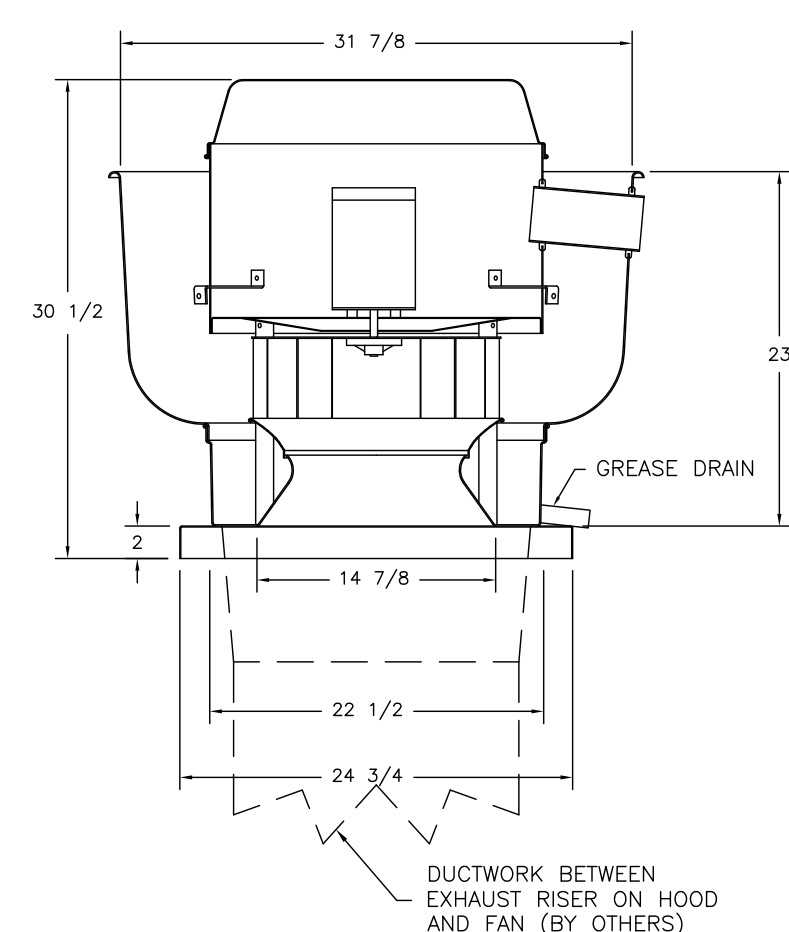
OPTIONS

- GREASE BOX.
- EXHAUST FAN HEAT BAFFLE.
- FAN BASE CERAMIC SEAL — INSTALLED AT PLANT — FOR GREASE DUCTS.
- ECM WIRING PACKAGE—EXHAUST — PWM SIGNAL FROM ECPM03 PREWIRE (NIDEC MOTOR).



PITCHED CURBS ARE AVAILABLE FOR PITCHED ROOFS.
SPECIFY PITCH:
EXAMPLE: 7/12 PITCH = 30° SLOPE

FAN #1 DUB5HFA — EXHAUST FAN (KEF1)



FEATURES:

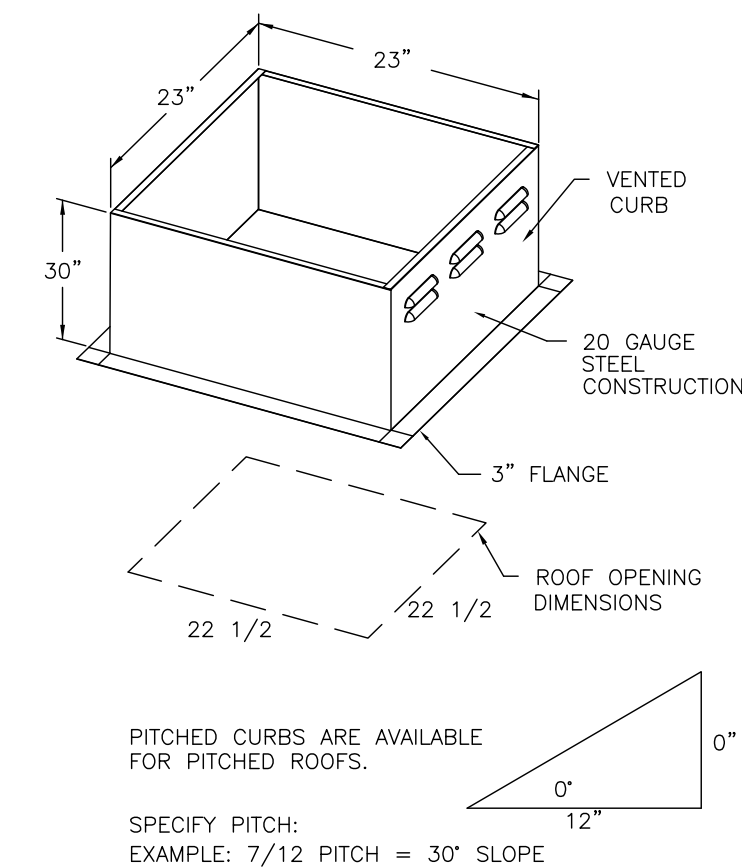
- DIRECT DRIVE CONSTRUCTION (NO BELTS/PULLEYS)
- ROOF MOUNTED FANS
- RESTAURANT MODEL
- UL705 AND UL762 AND ULC-8645
- VARIABLE SPEED CONTROL
- INTERNAL WIRING
- WEATHERPROOF DISCONNECT
- THERMAL OVERLOAD PROTECTION (SINGLE PHASE)
- HIGH HEAT OPERATION 300°F (149°C)
- GREASE CLASSIFICATION TESTING

NORMAL TEMPERATURE TEST
EXHAUST FAN MUST OPERATE CONTINUOUSLY WHILE EXHAUSTING AIR AT 300°F (149°C) UNTIL ALL FAN PARTS HAVE REACHED THERMAL EQUILIBRIUM, AND WITHOUT ANY DETRIMENTARY EFFECTS TO THE FAN WHICH WOULD CAUSE UNSAFE OPERATION.

ABNORMAL FLARE-UP TEST
EXHAUST FAN MUST OPERATE CONTINUOUSLY WHILE EXHAUSTING BURNING GREASE VAPORS AT 600°F (316°C) FOR A PERIOD OF 15 MINUTES WITHOUT THE FAN BECOMING DAMAGED TO ANY EXTENT THAT COULD CAUSE AN UNSAFE CONDITION.

OPTIONS

- GREASE BOX.
- EXHAUST FAN HEAT BAFFLE.
- FAN BASE CERAMIC SEAL — INSTALLED AT PLANT — FOR GREASE DUCTS.
- ECM WIRING PACKAGE—EXHAUST — PWM SIGNAL FROM ECPM03 PREWIRE (NIDEC MOTOR).



PITCHED CURBS ARE AVAILABLE FOR PITCHED ROOFS.
SPECIFY PITCH:
EXAMPLE: 7/12 PITCH = 30° SLOPE

FOR QUESTIONS, CALL THE CAPTIVE — AIRE (TRI—STATE) OFFICE
1329 E. KEMPER RD. SUITE 4210
PHONE: (513) 860-5555
joe.hertenstein@captiveaire.com

REVISIONS

| DESCRIPTION | DATE: |
|-------------|-------|
| | |
| | |
| | |

CAPTIVEAIRE
Air Solutions
www.captiveaire.com
1329 East Kemper Rd., Ste. 4210, Cincinnati, OH, 45246 PHONE: (513) 860-5555 EMAIL: reg.20@captiveaire.com

Penn Station V2BR2D
SHELBYVILLE, KY, 40065

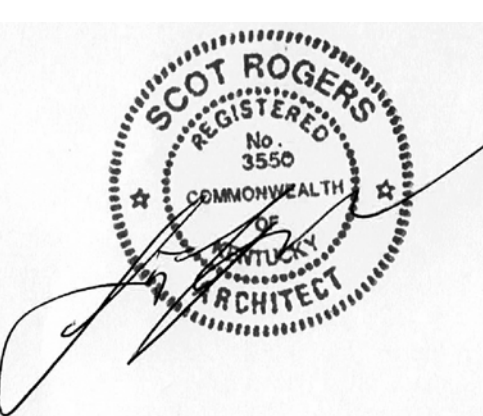
DATE: 10/7/2021
DWG.#: 5126207
DRAWN BY:
SCALE: 3/4" = 1'-0"
MASTER DRAWING

SHEET NO.
3



TILSLEY ARCHITECTS
1140 SAINT GREGORY ST. CINCINNATI, OH 45202
TEL: 513.851.4300
WWW.TILSLEYARCHITECTS.COM

A New Penn Station Restaurant
McManan Plaza
3067 Breckenridge Ln.
Louisville, KY 40220

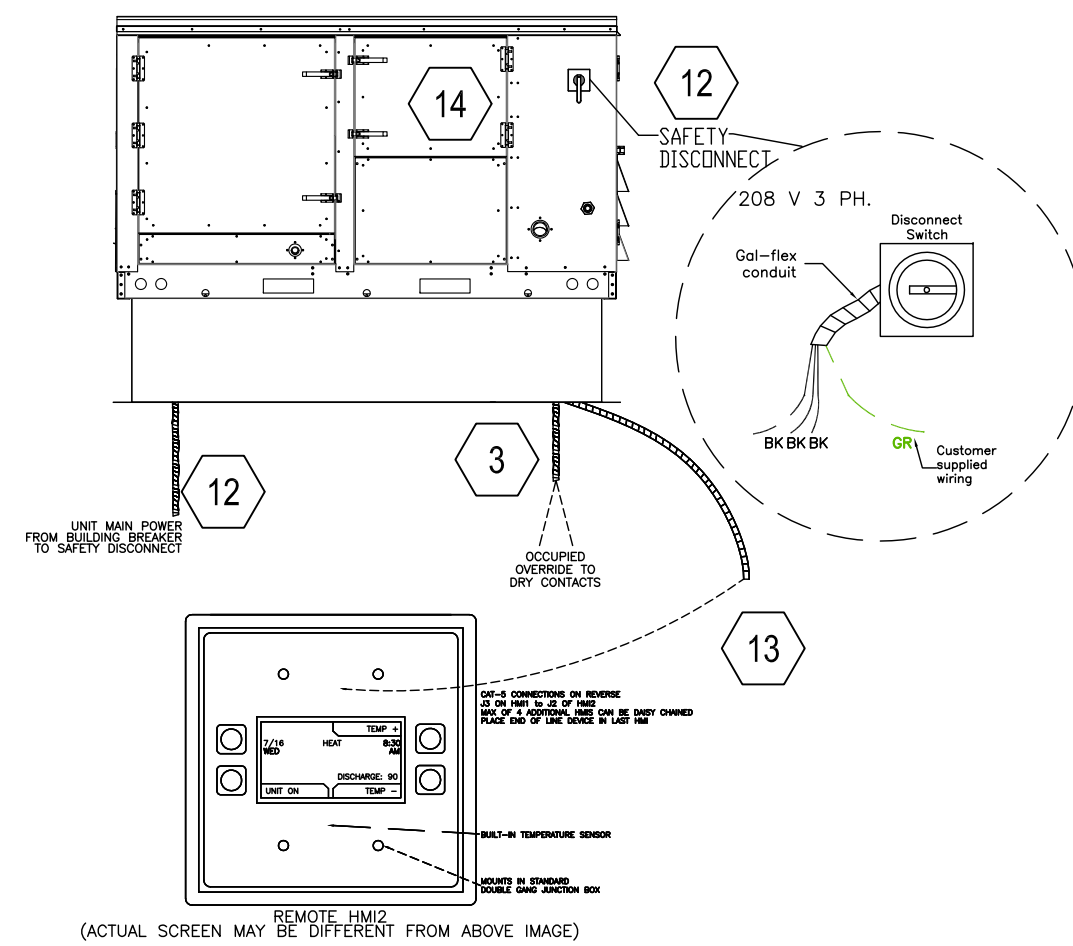
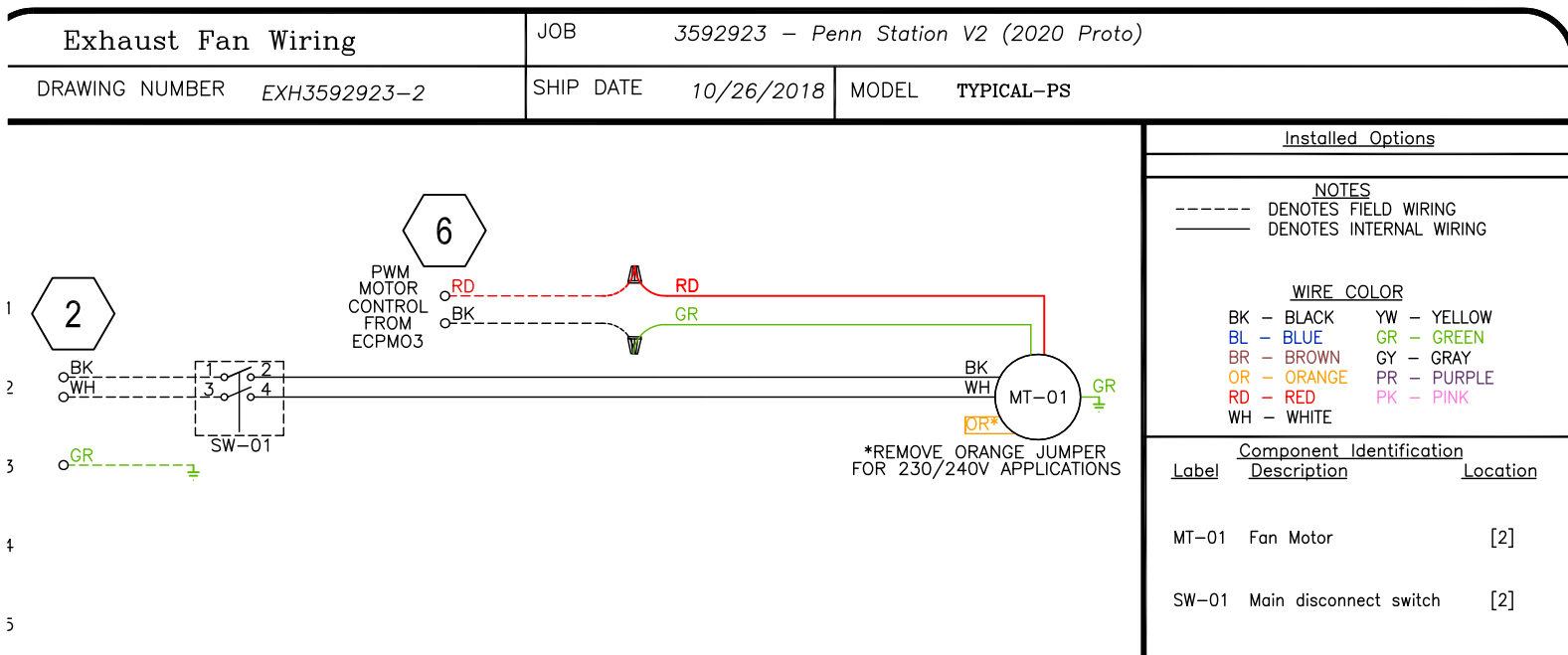
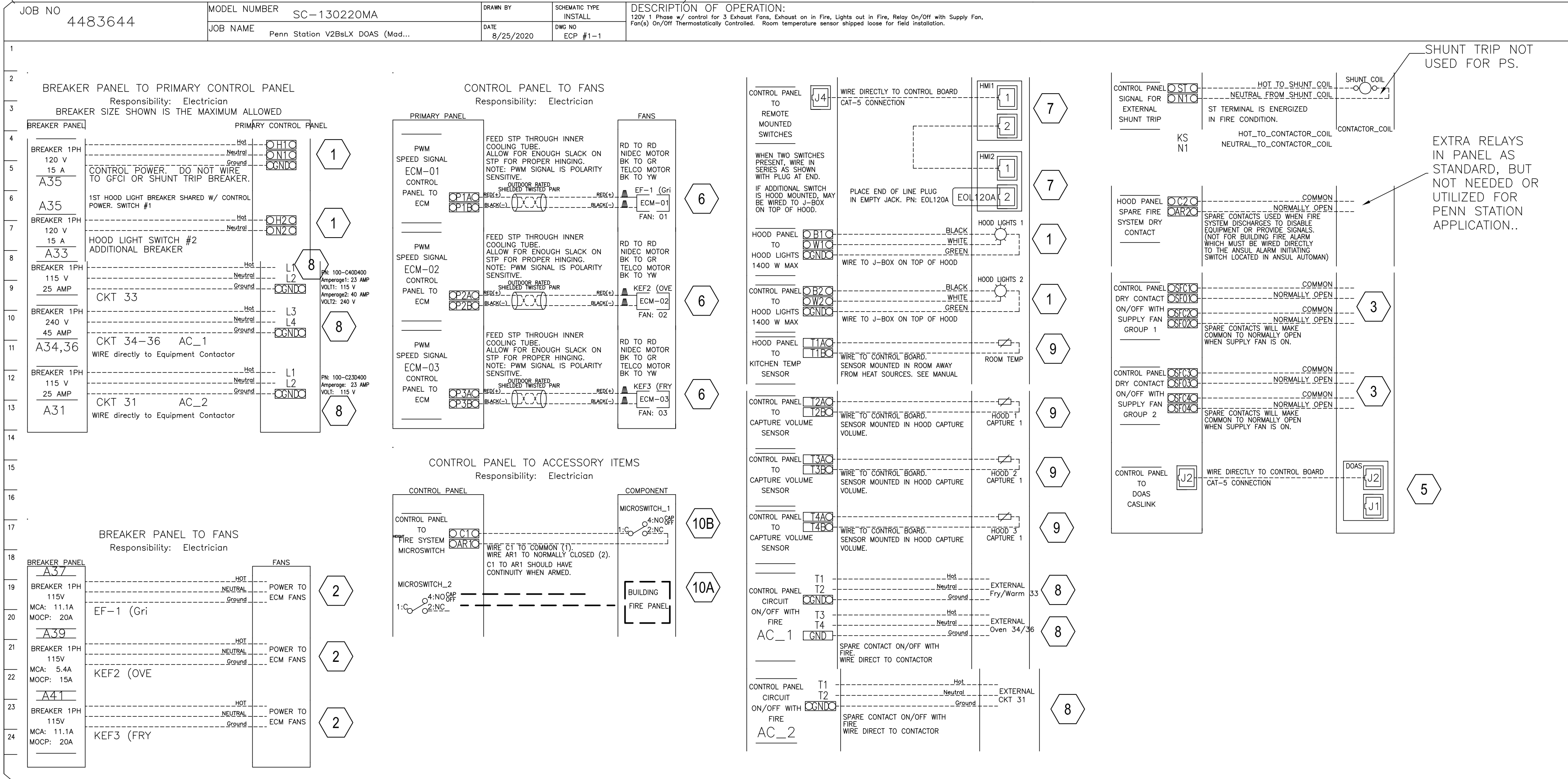


No. Revision
DATE: 10/7/2021
DWG.#: 5126207
DRAWN BY:
SCALE: 3/4" = 1'-0"
MASTER DRAWING
SHEET NO. 3
Scale Drawn
As Noted S. Rogers
21036 PS Breckenridge, KY

ELECTRICAL PACKAGE - JOB#4483644

| NO | TAG | PACKAGE # | LOCATION | SWITCHES | | OPTION | FANS CONTROLLED | | | | | |
|----|-----|-------------|----------------------------|---------------------------------------|----------|--|-----------------|---------|---|-------|------|-----|
| | | | | LOCATION | QUANTITY | | FAN TAG | TYPE | φ | HP | VOLT | FLA |
| 1 | EP1 | SC-130220MA | WALL UTILITY CABINET RIGHT | O2 - FACE MOUNT RIGHT SIDE OF HOOD | 2 LIGHT | SMART CONTROLS THERMOSTATIC CONTROL W/ RELAY ON/OFF WITH SUPPLY | EF-1 (Grill) | EXHAUST | 1 | 0.750 | 115 | 8.9 |
| | | | | HOOD # 1 | 2 FAN | | KEF2 (OVEN) | EXHAUST | 1 | 0.333 | 115 | 4.3 |
| | | | | | | | KEF3 (FRY) | EXHAUST | 1 | 0.750 | 115 | 8.9 |

(HOOD CONTROL PANEL-MOUNTED NEXT TO GRIDDLE HOOD)



FOR QUESTIONS, CALL THE
CAPTIVE-AIRE (TRI-STATE) OFFICE
1329 E. KEMPER RD. SUITE 4210
PHONE: (513) 860-5555
joe.hertenstein@captivaire.com

HOOD SYSTEM WIRING INSTRUCTIONS BY ELECTRICIAN

- WIRE 120V, 1 PHASE CIRCUIT FROM BUILDING PANEL TO HOOD CONTROL PANEL TO BE USED FOR CONTROLS & LIGHT CIRCUIT.
- WIRE 120V, 1 PHASE CIRCUITS FROM BUILDING PANEL TO EACH EXHAUST FAN (SEPARATELY) TO CAPTIVE-AIRE SUPPLIED FAN EXTERNAL DISCONNECTS (TYPICAL OF ALL EXHAUST FANS).
- RUN 18-5 THERMOSTAT WIRE FROM EACH RTU-DOAS UNITS TO HOOD CONTROL PANEL & CONNECT AS FOLLOWS:
 - Hood Panel SFC1 Connected to R in Kitchen RTU
 - Hood Panel SFC0 Connected to R in Dining RTU
 - Hood Panel SFC3 Connected to AUXN1 in Dining RTU
 - Tie the Front Microswitch Common (Red Wire) to Terminal SD1 of Each of the RTU Units.
 - Tie the Front Microswitch Normally Open (Black Wire) to SD3 of Each of the RTU Units.
- Not Used
- Run the additional supplied cat-5 cable from the hood control package J2 to the DOAS unit J2 Plug. Captive Aire Service Technician can land the final location in panel & DOAS to allow the hood system along with the DOAS unit to view it remotely via CASLINK
- THERE IS A RED & BLACK PAIR OF TWISTED WEATHERPROOF WIRE ALREADY FACTORY CONNECTED TO EACH MOTOR OF EACH EXHAUST FAN LOCATED UNDER THE FAN HOUSING LID. RUN EACH WIRE THROUGH MOTOR BREATHER TUBE & THEN DOWN TO HOOD CONTROL PANEL NEXT TO GRILL HOOD. TIE EACH ONE INTO P#A & P#B RESPECTIVELY FOR EACH FAN AS SHOWN ON SCHEMATIC TO THE LEFT.
- WIRE THE CAT5 CABLE SUPPLIED BY CAPTIVE AIRE FROM J4 PLUG TO THE JUNCTION BOX LOCATED ON TOP OF THE GRILL HOOD & PLUG IN FOR GRILL HD SWITCH (HMI-1). THEN WIRE THE OTHER CAT5 CABLE FROM THE GRILL HOOD JUNCTION BOX TO THE FRY HOOD JUNCTION BOX ON TOP OF HOOD & PLUG INTO J PLUG FOR THE FRY HOOD SWITCH (HMI-2). YOU ARE WIRING THE SWITCHES TO THE PANEL IN SERIES. SEE H1.0, H2.0
- WIRE THE 120V 1 PHASE FRYER(S)/WARMER CIRCUITS & THE 240V 1 PHASE OVEN CIRCUIT FROM BUILDING PANEL TO HOOD CONTROL PANEL TO THE RESPECTIVE 120V & 240V CONTACTERS & THEN FROM HOOD CONTROL PANEL TO THE RESPECTIVE WALL OUTLETS.
- USING THE WHITE WIRE SUPPLIED BY CAPTIVE-AIRE WIRE FROM EACH HOOD DUCT SENSOR LOCATED IN HOOD EXHAUST COLLAR OR TOP OF HOOD IN JUNCTION BOX TO HOOD CONTROL PANEL & TIE INTO T2A & T2B, T3A & T3B, T4A & T4B. THEN INSTALL WHITE TEMP SENSOR SUPPLIED BY CAPTIVE AIRE ON RIGHT SIDE OF HOOD SS PANEL & WIRE TO T1A & T2B.
- IF BUILDING ALARM IS PROVIDED WITH BUILDING THEN WIRE DIRECTLY INTO THE FRONT SECTION OF THE ANSUL MICROSWITCH PER THE BUILDING FIRE PANEL REQUIREMENTS TO RECEIVE AN ALARM SIGNAL UPON FIRE SYSTEM ACTUATION. IF NO BUILDING ALARM, THEN SUPPLY A HORN/LIGHT STROBE & MOUNT IN SIGHT OF HOODS AND TIE DIRECTLY INTO ANSUL MICROSWITCH AT NO CONTACT ON SWITCH (BLACK WIRE OF MICROSWITCH) & A NEUTRAL FROM CONTROL PANEL.
- INSTALL LIGHT BULBS IN HOODS SUPPLIED BY OWNER. VERIFY ALL FANS & LIGHTS POWER UP. CHECK ROTATION FOR SUPPLY FAN. ANY QUESTIONS CONTACT JOE AT 513-860-5555. 5 BULBS REQ'D - SUPPLIED IN GENERAL LIGHTING PACKAGE.
- RUN 208V/3 PHASE CIRCUIT TO CONNECT TO EACH OF THE RTU-DOAS UNITS (QTY 2). SINGLE POINT CONNECTION.
- MOUNT HMI-STAT ON WALL PER M PLANS & RUN CAPTIVE AIRE SUPPLIED CAT5 UNIT FROM EACH UNIT TO EACH OF THE UNITS HMI WALL LOCATION.
- RTU1 CONVENIENCE OUTLET (GFCI), 15 AMP SUPPLIED WITH EACH RTU - REQUIRES ELECTRICIAN TO RUN SEPARATE 120V CONNECTION.
INCLUDES RECEPTACLE, COVER AND J BOX.

REVISIONS

| NO | DESCRIPTION | DATE |
|----|-------------|------|
| | | |
| | | |
| | | |
| | | |

www.captiveaire.com

Air Solutions

1329 East Kemper Rd., Ste. 4210, Cincinnati, OH, 45246 PHONE: (513) 860-5555 EMAIL: reg120@captiveaire.com

Penn Station V2BR2D

SHELBYVILLE, KY, 40065

DATE: 10/7/2021
DWG.#: 5126207
DRAWN BY:
SCALE: 3/4" = 1'-0"
MASTER DRAWING

SHEET NO.
4

TILSLEY ARCHITECTS
1140 SAINT GREGORY ST. CINCINNATI, OH 45202
TEL: 513.851.4300 WWW.TILSLEYARCHITECTS.COM

A New Penn Station Restaurant
McManan Plaza
3067 Breckenridge Ln.
Louisville, KY 40220

SCOTT ROGERS ARCHITECTS
REGISTERED ARCHITECT
No. 3550
COMMONWEALTH

Sheet Title: **Captiveaire Shop**
Drawings
Issued: 11-12-21
Scale: As Noted
Drawn: S. Rogers
21036 PS Breckenridge, KY

H4.0

