

DRAWING NOTES
DRAWING H201

- D1 MC TO DEMOLISH DUCTWORK AS INDICATED, INCLUDING ALL AIR DEVICES, SUPPORTS, DAMPERS, INSULATION, AND TRIM. PREPARE DUCT OPENINGS TO REMAIN FOR RE-USE IN NEW WORK. CAP ALL DUCT OPENINGS NOT USED IN NEW WORK AND SEAL AIRTIGHT. DEMOLISH ALL ABANDONED PNEUMATIC CONTROLS AND TUBING BACK TO THE NEAREST MAIN AND CAP.
- D2 MC TO DEMOLISH VAV BOX. CC TO DEMOLISH ALL CONTROLS ASSOCIATED WITH THE VAV BOX, INCLUDING THE THERMOSTAT, SENSORS, AND ALL WIRING. CC TO DEMOLISH ALL COMMUNICATION NETWORK WIRING FROM THE VAV BOX TO THE LOCAL AREA NETWORK FOR ALL EXISTING TO REMAIN CONTROLS. CC TO DEMOLISH ALL PROGRAMMING AND GRAPHICS FOR THE ASSOCIATED VAV BOX ON THE BMS FRONT END.
- 1 MC TO PROVIDE AND FIELD ROUTE ALL NEW DUCTWORK AS INDICATED INCLUDING ALL AIR DEVICES, SUPPORTS, DAMPERS, INSULATION, AND TRIM. PROVIDE CONNECTION INTO EXISTING DUCT AT TIE-POINT.
- 2 MC TO PROVIDE AND FIELD LOCATE NEW VAV BOX AT THIS APPROXIMATE LOCATION. SUPPORT UNIT FROM STRUCTURE ABOVE. SEE DETAIL 1 ON DRAWING H500 FOR MORE INFORMATION.
- 3 CC TO PROVIDE ALL NEW DDC CONTROLS FOR THE NEW VAV BOX INCLUDING ALL CONTROL DEVICES, CONTROLLERS, AND WIRING. CC TO INTEGRATE NEW VAV BOX CONTROLS INTO EXISTING BMS INCLUDING ALL LOCAL AREA NETWORK WIRING, PROGRAMMING, AND GRAPHICS. SEE DETAIL 2 ON DRAWING H500 FOR MORE INFORMATION.

- 4 MC TO PROVIDE AIR BALANCE AND ADJUSTMENT WITH CERTIFIED REPORT ON AIR HANDLER AND ASSOCIATED DUCTWORK DISTRIBUTION SYSTEM, INCLUDING ALL VAV BOXES AND AIR DEVICES.
- 5 MC TO PROVIDE EXHAUST FAN IN CEILING AND SUPPORT FROM STRUCTURE ABOVE. PROVIDE EXHAUST DUCTWORK FROM FAN AND FIELD ROUTE TO EXTERIOR WALL WITH WALL CAP.
- 6 MC TO PROVIDE NEW CEILING MOUNTED UNIT HEATER AND SUPPORT FROM THE STRUCTURE ABOVE.
- 7 CC TO PROVIDE NEW DUCT DIFFERENTIAL PRESSURE TRANSMITTER IN THE DUCT AT THIS LOCATION AND INTEGRATE INTO EXISTING AHU-1E DDC CONTROLLER INCLUDING ALL WIRING, PROGRAMMING, AND GRAPHICS.
- 8 ROUTE NEW EXHAUST DUCT THROUGH EXISTING GLASS BLOCK TILE EXTERIOR WALL AND TERMINATE DUCT WITH WALL CAP. SHIPPED LOOSE WITH EXHAUST FAN. ALIGN WALL CAP WITH GLASS BLOCK TILE GRID AND COORDINATE FINAL LOCATION WITH OWNER AND ARCHITECT PRIOR TO INSTALLATION. REINFORCE OPENING AS NEEDED TO MAINTAIN STRUCTURAL INTEGRITY AND SEAL WATERTIGHT.
- 9 PROVIDE SHEET METAL LIGHT SHIELD ABOVE RETURN DIFFUSER AND PAINT INTERIOR SURFACES BLACK.
- 10 CC TO PROVIDE PROGRAMMING MODIFICATIONS TO THE EXISTING AHU-1E CONTROLS TO MEET THE SEQUENCES AND CONTROL INTENT DESCRIBED IN THE SPECIFICATIONS.

EQUIPMENT NOTES

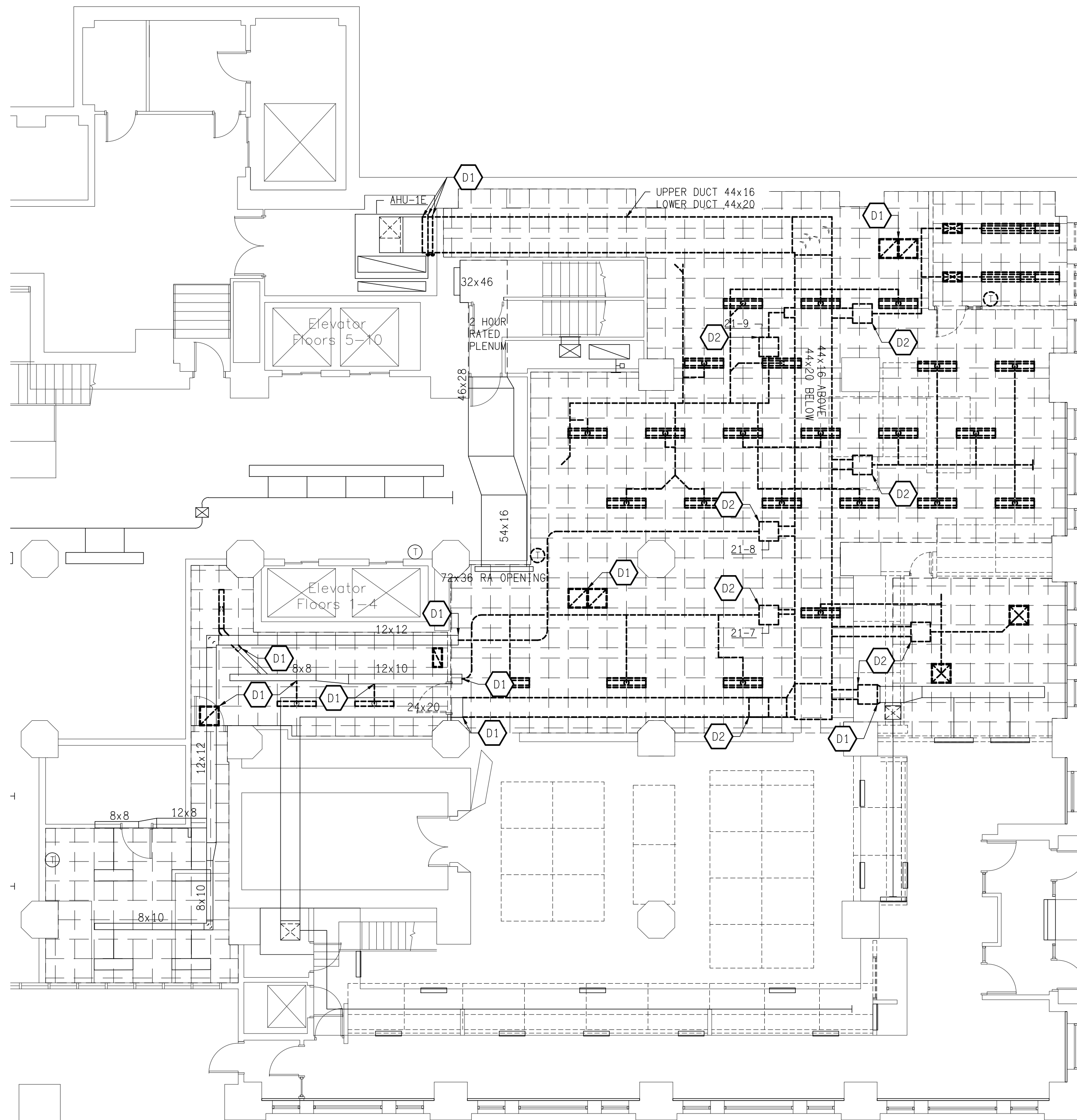
- SVH-X NEW VAV BOX.
- EF-1, 2 NEW CEILING EXHAUST FAN.
- EUH-1 NEW CEILING UNIT HEATER.
- UV-1 NEW DUCT MOUNTED UV ASSEMBLY. LUMALIER SERIES ADPL-195-DC OR EQUAL. ONE 95W TUV LAMP. 254 NANOMETERS WAVELENGTH. 18 MOS OR GREATER LAMP LIFE. SELF-REGULATED ELECTRONIC UV BALLAST, 120V. 4 BULBS TOTAL, DAISY CHANGED. EQUAL BY MACWARREN, TRANE, ULTRAVATION OR WELLAIR.

SEE EQUIPMENT SCHEDULES ON DRAWING H700.

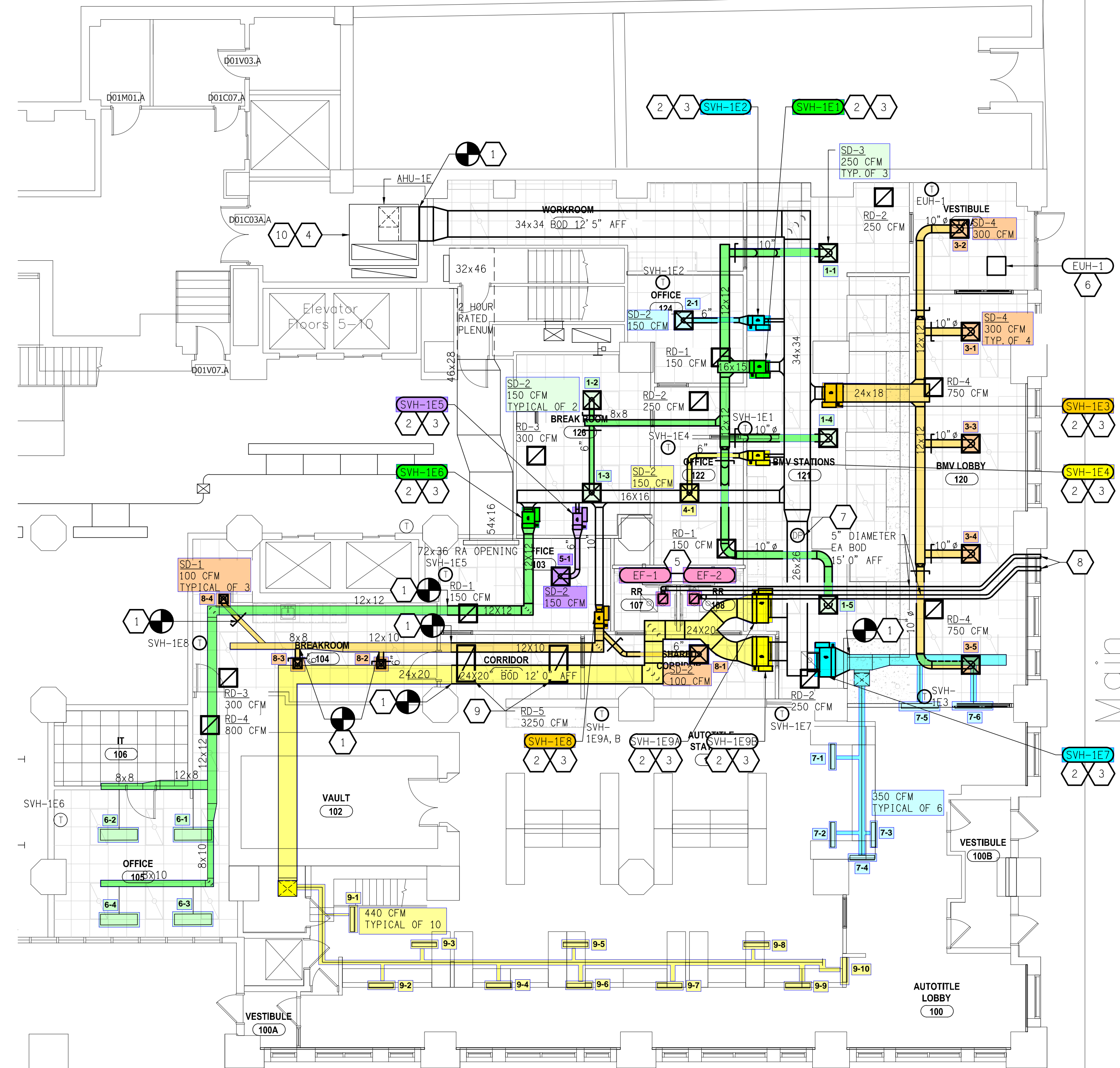
GENERAL NOTES

APPLIES TO ALL DRAWINGS OF THIS TRADE.

- A FOR KEY PLAN AND DRAWING INDEX SEE ARCHITECTURAL PLANS.
- B FOR GENERAL NOTES, LEGEND AND SYMBOLS SEE DRAWING H001.
- C REFER TO THE ARCHITECTURAL REFLECTED CEILING PLANS FOR ALL CEILING GRID DEMO AND NEW WORK TO BE COMPLETED BY THE GC. WHEREVER THE GC DOES NOT PERFORM SUCH WORK, MC IS RESPONSIBLE FOR REMOVING AND REPLACING THE CEILING GRID AND TILES AS NEEDED FOR THE MECHANICAL INSTALLATION.



PARTIAL PLAN - DEMO - FIRST FLOOR
SCALE: 1/8" = 1'-0"
1
H201



PARTIAL PLAN - NEW WORK - FIRST FLOOR
SCALE: 1/8" = 1'-0"
2
H201

CHAMPLIN
ARCHITECTURE

720 E Pete Rose Way, Suite 140
Cincinnati, OH 45202
T 513.241.4474 F 513.241.0081
thinkchamplin.com

THINK CREATE REALIZE

THERMALTECH
ENGINEERING

FACILITY AND UTILITY SYSTEMS
ANALYSIS/DESIGN/CONSTRUCTION
513-681-2271 WWW.THERMALTECH.COM
CINCINNATI, OH • ELLENSTOWN, PA • FORT WORTH, TX • LAWRENCEBURG, IN
RICHLAND, MO • GRAND RAPIDS, MI • MEMPHIS, TN

**TPC COMBINED
AUTOTITLE & BMV
RENOVATION**

138 E. COURT STREET
CINCINNATI, OH 45202

ITB # 027-23

ISSUANCES

DATE	NO.	ITEM
01/27/23	0	ISSUED FOR BID
02/28/23	1	ISSUED FOR ADDENDUM 3
05/12/23	2	ISSUED FOR PERMIT

DRAWN BY
BDS

CHECKED BY
TTC

CLIENT NO.

PROJECT NO.

STATE OF OHIO
PROFESSIONAL ENGINEER
75602

DRAWING TITLE
**HVAC
DEMOLITION
AND NEW WORK**

SHEET NO.
H201