

E5 HVAC PLAN
SCALE: 1/4" = 1'-0"

NOTE: ALL DUCTWORK TO BE LOCATED IN TRUSS SPACE WHERE POSSIBLE. SEE FRAMING PLAN.

HVAC SETPOINTS RECOMMENDED BY CORPORATE OPERATIONAL GUIDELINES:
 1. DINING: HEATING 70 DEGF. COOLING 72 DEGF.
 2. KITCHEN: HEATING 68 DEGF. COOLING 74 DEGF

SUPPLY DUCTWORK SIZING TABLE*			
ROUND		RECTANGULAR	
SIZE	CFM RANGE	SIZE	CFM RANGE
8"	115 - 235	8"x8"	205 - 300
10"	240 - 435	10"x8"	305 - 400
12"	440 - 710	10"x10"	405 - 550
14"	715 - 1,070	12"x10"	555 - 700
16"	1,075 - 1,530	12"x12"	705 - 900
18"	1,535 - 2,090	14"x12"	905 - 1,105
20"	2,095 - 2,760	16"x12"	1,110 - 1,315
22"	2,765 - 3,550	18"x12"	1,320 - 1,520
24"	3,555 - 4,470	20"x12"	1,525 - 1,740
*CONTRACTOR MAY SUBSTITUTE RECTANGULAR FOR ROUND DUCTWORK ON MAIN RUNS AT THEIR DISCRETION. BRANCHES TO DIFFUSERS TO REMAIN ROUND.			
		22"x12"	1,745 - 1,950
		24"x12"	1,955 - 2,170
		26"x12"	2,175 - 2,400
		28"x12"	2,405 - 2,610
		30"x12"	2,615 - 2,840
		32"x12"	2,845 - 3,070
		34"x12"	3,075 - 3,290
		36"x12"	3,295 - 3,520
		36"x14"	3,525 - 4,420

DIFFUSER, REGISTER, AND GRILLE SCHEDULE									
TAG	SERVICE	TYPE	MATERIAL	THROW	FACE	NECK	MOUNTING	MANUFACTURER/MODEL	Notes
SD-1	SUPPLY	LOUVERED	STEEL	4-WAY	24X24	SEE PLAN	LAY-IN	CARNES SFP24	2, 4
SD-2 - NOT USED									
SD-3	SUPPLY	LOUVERED	STEEL	3-WAY	SEE PLAN	SEE PLAN	SURFACE	CARNES SKSA	2, 4
SD-4	SUPPLY	LOUVERED	STEEL	4-WAY	12X12	SEE PLAN	SURFACE	CARNES SKSA	1, 2, 4
SD-5	SUPPLY	PERFORATED	STEEL	PERFORATED	24X24	SEE PLAN	LAY-IN	CARNES SPRB24	2, 4
RG-1	RETURN	SQUARE EGGRATE	ALUMINUM	N/A	24X24	22X22	LAY-IN	CARNES RAPMF	2, 3, 4
EG-1	RETURN	LOUVERED GRILLE	STEEL	N/A	12X12	SEE PLAN	SURFACE	CARNES RTLAH	1, 2, 4
TG-1	TRANSFER	LOUVERED GRILLE	STEEL	N/A	SEE PLAN	SEE PLAN	SURFACE	CARNES RTLAH	2, 4
DIFFUSER NOTES:									
1. PROVIDE W/ ADJUSTABLE OPPOSED BLADE DAMPER									
2. VERIFY ALL DIFFUSERS AND RETURN GRILLE COLORS WITH OWNER AND ARCHITECT									
3. PROVIDE W/ 22X22 PLENUM BOX.									
4. ALL DIFFUSERS AND RETURNS LOCATED IN BLACK CEILING SHALL BE FLAT BLACK FINISH.									

© 2022

NEW CULVER'S RESTAURANT
470 N. RANDALL RD
 Batavia, IL 60510
 County of KANE

OWNER:
 MISUKA BURGER, LLC
 9455 Skokie Boulevard
 Skokie, IL 60077
 Michael Smith
 312-287-2705

OWNER:
 OLLMANN ERNEST MARTIN ARCHITECTS
 200 South State Street
 Belvidere Illinois 61008
 815-544-7190 Phone

HVAC PLAN, DIFFUSER SCHEDULE

© OEMA
 All rights reserved; any copying, transmittal or disclosure subject to OEMA written approval.

Date: 4-04-2022
 Revision: 12.30.22

2021-141
M101

GENERAL NOTES

- DEVIATIONS FROM THE HVAC PLANS ARE THE RESPONSIBILITY OF THE HVAC CONTRACTOR & WILL NOT RESULT IN ADDITIONAL COSTS TO THE OWNER UNLESS WRITTEN CHANGE ORDERS ARE APPROVED BY THE OWNER.
- ALL WORK TO BE PERFORMED TO STATE CODE & SMACNA GUIDELINES.
- INSTALL UNITS ACCORDING TO MANUFACTURERS GUIDELINES.
- PROVIDE OWNER W/ OPERATION & MAINTENANCE MANUALS & SYSTEM SCHEMATICS.
- CONTRACTOR TO CONFIRM VOLTAGES & PHASES OF EQUIPMENT PRIOR TO INSTALLATION.
- VERIFY ALL EXISTING CONDITIONS PRIOR TO INSTALLATION (DRAWINGS ARE DIAGRAMMATIC IN NATURE & DO NOT REFLECT EXACT LOCATIONS OF EQUIPMENT OR OTHER APPARATUSES.)
- PROVIDE SHOP DRAWINGS TO THE ARCHITECT/DESIGNER FOR EQUIPMENT, FANS, REGISTERS, ETC. PRIOR TO PROCUREMENT.
- PROVIDE OWNER W/ COLOR CHOICES FOR SWITCHES & OTHER APPARATUSES WHERE APPLICABLE.
- VENT OWNER WATER HEATER AS REQUIRED.
- VENT DRYER THRU SIDEWALL TO EXTERIOR AS REQUIRED. MAINTAIN CLEARANCE FROM INTAKES AS NOTED.
- HANG & SUPPORT MATERIALS SHALL BE INSTALLED THE LATEST EDITION OF THE ASHRAE HANDBOOK OF FUNDAMENTALS.
- MAINTAIN AT LEAST 10 FEET CLEARANCE FROM INTAKES OR WINDOWS ON ALL EXHAUST VENTS.
- TEST, ADJUST, & CALIBRATE CONTROL SYSTEMS AS REQUIRED. PROVIDE SCHEMATICS / DESCRIPTION TO THE OWNER PRIOR TO INSTALLATION.
- INSTALLER RESPONSIBLE FOR FINAL TEST & BALANCING DURING TRAINING WEEK. PROVIDE WRITTEN REPORT BY THIRD PARTY INDEPENDENT TAB CONTRACTOR.
- HVAC CONTRACTOR TO INSTALL #2 GAS W/ 1/4" WATER COLUMN MAX. PER STATE CODE & AGA GUIDELINES (LABEL AS REQUIRED).
- CONTRACTOR TO VERIFY GAS METER CAPACITY W/ LOCAL GAS SUPPLIER.
- VERIFY W/ OWNER EXACT HEATER LOCATION TO AVOID BUILDING FUNCTION INTERFERENCE.
- REPLACE ALL AIR FILTERS PRIOR TO TURNING SYSTEM OPERATIONS OVER TO OWNER.
- HVAC CONTRACTOR IS RESPONSIBLE FOR A COMPLETE & FULLY WORKING SYSTEM.
- DUCT DIMENSIONS LISTED ARE NET FREE - CLEAR INSIDE DIMENSIONS.
- VERIFY DUCT LOCATIONS PRIOR TO FABRICATION. (VERIFY LIMITED AREA FOR DUCTWORK & OTHER APPARATUSES.)
- INSULATE DUCT WORK TO SMACNA GUIDELINES & STATE CODES.
- INSTALL VOLUME CONTROL DAMPERS AS INDICATED ON PLANS.
- FLEXIBLE ROUND DUCT WORK NOT TO EXCEED 8 FEET IN LENGTH. AVOID UNNECESSARY TURNS & SLACK.
- VERTICAL RETURN AIR DUCT WORK DOWN FROM RTU'S TO BE LINED FOR SOUND ATTENUATION.
- DUCT WORK TO BE STANDARD GAUGE SHEET METAL (FIBROUS DUCT NOT ALLOWED.)
- INSULATE EXHAUST DUCT FOR EXHAUST FAN TO EXTERIOR TERMINATION.
- COORDINATE WORK W/ GENERAL CONTRACTOR & OWNER TO MAXIMIZE CEILING HEIGHT & AVOID CONFLICTS.
- S/S WALL PANELS FOR THE KITCHEN AREA ARE TO BE FURNISHED AND INSTALLED BY THE HVAC CONTRACTOR. PANELS ARE TO BE 18 GA. TYPE 304 S/S. SEE DETAILS AND LOCATIONS ON THE A103 DRAWING.
- EXHAUST FANS AND FURNACE FANS TO RUN CONTINUOUSLY DURING OCCUPIED MODE.
- NIGHT SET BACK THERMOSTATS TO BE INSTALLED ON ALL HVAC EQUIPMENT.

NATIONAL ACCOUNT PROGRAM

- LENNOX INDUSTRIES, INC.** - ROOFTOP HVAC EQUIPMENT
NATIONAL ACCOUNTS SALES: (800) 367-6285 Option #1 lennoxind.com
NATIONAL ACCOUNT TECHNICAL SUPPORT: (800) 367-6285 Option #2 lennoxind.com
- ACCUREX GREENHECK FAN CORPORATION** - KITCHEN HOODS, EXHAUST FANS, ROOF CURBS, ANSUL SYSTEMS, ACCESSORIES AND TEST AND BALANCE
CONTACT PHILIP KRAFT: 1-262-227-7865 philip.kraft@accurex.com
SECONDARY CONTACT BRAD BORCHARDT: 1-715-551-0809 brad.borchardt@accurex.com
SECONDARY CONTACT ANDY JACOBS: andy.jacobs@accurex.com
ACCUREX WILL PROVIDE BALANCED AIRFLOW AND FUNCTIONAL CHARACTERISTICS OF THE HVAC AS THEY RELATE TO AIRFLOW AND RESISTANCE ONLY. SERVICES TO BE PERFORMED BY A CERTIFIED NEBB FIRM AND ITS MANAGING GROUP - NATIONAL TAB
- CARNES COMPANY** - DIFFUSERS AND GRILLES
NATIONAL ACCOUNTS SALES: CHRIS STRATTON - (608) 945-6411 cstratton@carnes.com
NATIONAL ACCOUNTS REP: BRIAN BAKER - (608) 845-6411 bbaker@carnes.com

MECHANICAL EQUIPMENT SPECIFICATIONS

- RTU-1 **LENNOX EMERGENCY SERIES LGH210H48 W/ PRODIGY CONTROLLER**
COMBINATION GAS W/ HIGH TWO-STAGE HEATING & ELECTRIC COOLING ROOFTOP UNIT W/ STAINLESS STEEL HEAT EXCHANGER, LOW HEAT 240,000 BTU/HR & HIGH HEAT 360,000 BTU/HR INPUT HEATING CAPACITY, 80.0% EFF, 210,000 NOMINAL COOLING CAPACITY, 12.0 EER, 208 / 230 VOLT, 3 PHASE, 100 MOCOP (NOTIFY ELECTRICAL CONTRACTOR IF BREAKER SIZE CHANGES), 6,150 CFM CONSTANT VOLUME SUPPLY, 1,900 CFM OA MINIMUM. IN ADDITION TO THE OPTIONS LISTED ABOVE, INCLUDE THE FOLLOWING FACTORY INSTALLED OPTIONS: WEATHERPROOF DISCONNECT SWITCH, FACTORY INSTALLED FIELD POWERED GFCI RETURN AIR SMOKE DETECTORS, DRAIN PAN OVERFLOW SWITCH, SINGLE ENTHALPY ECONOMIZER WITH BAROMETRIC RELIEF AND HOODS. INCLUDE THE FOLLOWING FIELD INSTALLED OPTIONS: 2" MERV13 FILTERS, SPARE BELT, DOWN FLOW HYBRID CURB, PVC DRAIN TRAP KIT, REMOTE HUMIDITY SENSOR, MESH HAIL GUARD, LENNOX MODEL CS7500 PROGRAMMABLE THERMOSTAT. **NO SUBSTITUTIONS.**
- RTU-2 **LENNOX EMERGENCY SERIES LGH240H48 W/ PRODIGY CONTROLLER**
COMBINATION GAS W/ HIGH TWO-STAGE HEATING & ELECTRIC COOLING ROOFTOP UNIT W/ STAINLESS STEEL HEAT EXCHANGER, LOW HEAT 169,000 BTU/HR & HIGH HEAT 260,000 BTU/HR INPUT HEATING CAPACITY, 80.0% EFF, 240,000 NOMINAL COOLING CAPACITY, 12.0 EER, 208 / 230 VOLT, 3 PHASE, 100 MOCOP (NOTIFY ELECTRICAL CONTRACTOR IF BREAKER SIZE CHANGES), 6,150 CFM CONSTANT VOLUME SUPPLY, 1,900 CFM OA MINIMUM. IN ADDITION TO THE OPTIONS LISTED ABOVE, INCLUDE THE FOLLOWING FACTORY INSTALLED OPTIONS: WEATHERPROOF DISCONNECT SWITCH, FACTORY INSTALLED FIELD POWERED GFCI RETURN AIR SMOKE DETECTORS, DRAIN PAN OVERFLOW SWITCH, SINGLE ENTHALPY ECONOMIZER WITH BAROMETRIC RELIEF AND HOODS. INCLUDE THE FOLLOWING FIELD INSTALLED OPTIONS: 2" MERV13 FILTERS, SPARE BELT, DOWN FLOW HYBRID CURB, PVC DRAIN TRAP KIT, REMOTE HUMIDITY SENSOR, MESH HAIL GUARD, LENNOX MODEL CS7500 PROGRAMMABLE THERMOSTAT. **NO SUBSTITUTIONS.**
- PRV-1 **RESTROOM EXHAUST FAN - REFER TO SHEET M204**
- PRV-2 **GRIDDLE EXHAUST FAN - REFER TO SHEET M202**
- PRV-3 **FRYER EXHAUST FAN - REFER TO SHEET M203**
- EF-1A **MOP ROOM EXHAUST FAN - REFER TO SHEET M204**
- ITEM #49A **GRIDDLE HOOD - REFER TO SHEET M202**
- ITEM #59A **FRYER HOOD - REFER TO SHEET M203**
- ECH-1 **ELECTRIC CEILING HEATER Q-MARK OR EQUAL CDF-548 ELECTRIC CEILING HEATER & CDF RECESSED MOUNTING FRAME, CDF-TF4 TRANSFORMER & WALL MOUNTED THERMOSTAT, 208/240 VOLT SINGLE PHASE - 19.2 AMPS (SUPPLIED AND INSTALLED BY ELECTRICAL CONTRACTOR.)**
- ITEM #25A **DISHWASHER HOOD - REFER TO SHEET M204**
- PRV-4 **DISHWASHER EXHAUST FAN - REFER TO SHEET M204**

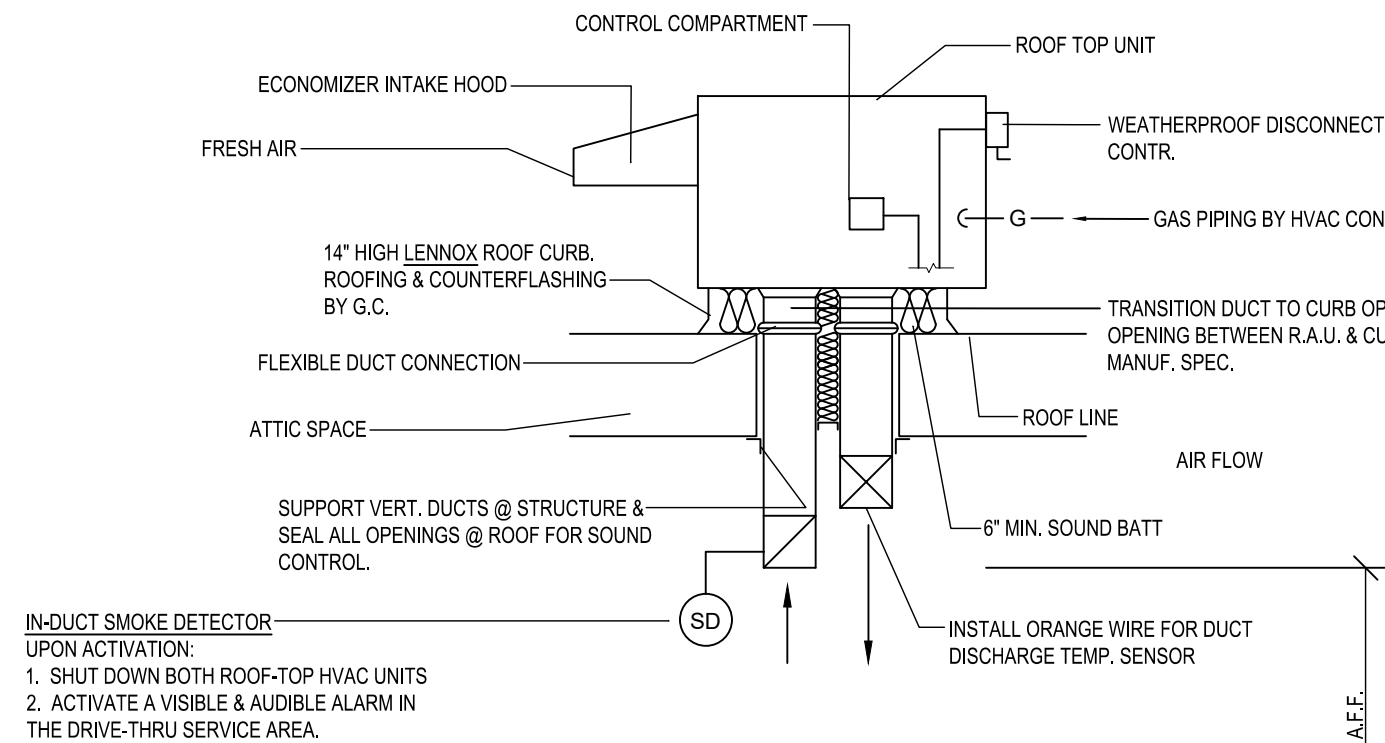
CONTROL NOTES

- NOTE: KITCHEN HOODS SUPPLIED AND INSTALLED BY HVAC CONTRACTOR
- WIRE RTU-1, RTU-2 TO SHUT-DOWN EXHAUST HOOD FANS TO CONTINUE TO RUN UPON ACTIVATION OF THE ANSUL SYSTEM.
 - WIRE RTU-1 & RTU-2 TO SHUT-DOWN UPON ACTIVATION OF ANY IN-DUCT SMOKE DETECTOR.
 - OCCUPIED MODE: FANS IN RTU-1 & RTU-2, EXHAUST FANS PRV-1, PRV-2, PRV-3 AND EF-1 TO RUN CONTINUOUSLY.
 - UNOCCUPIED MODE: FANS IN RTU-1 & RTU-2 TO RUN ONLY WHEN COOLING OR HEATING IS CALLED FOR.

TEST & BALANCE NOTES

- ACCUREX WILL PROVIDE BALANCED AIRFLOW & FUNCTIONAL CHARACTERISTICS OF THE HVAC SYSTEM AS THEY RELATE TO AIRFLOW & AIR PRESSURE ONLY. SERVICES TO BE PERFORMED BY A CERTIFIED NEBB FIRM & ITS MANAGING GROUP NATIONAL TAB.
- SERVICES NOT INCLUDED, PULLEY / SHEAVE CHANGES, MOTOR CHANGE OUTS, OR RETURN TRIPS DUE TO DELAYS CAUSED BY JOB INCOMPLETENESS.

AIR BALANCE TABLE				
EXHAUST AIR FLOW				
EQUIPMENT TAG	SERVICE	CFM		
PRV-1	RESTROOMS	375		
PRV-2	ITEM #49	1,500		
PRV-3	ITEM #59	1,500		
PRV-4	ITEM #25A	350		
EF-1A	MOP ROOM	75		
TOTAL =		3,800		
VENTILATION REQUIRED PER 2018 INTERNATIONAL MECHANICAL CODE				
EQUIPMENT TAG	SERVICE	CFM		
RTU-1	DINING ROOM	1,477		
RTU-2	KITCHEN	108		
TOTAL =		1,585		
3,800 > 1,585 -> USE 3,800 CFM FOR OUTSIDE AIR CFM				
OVERALL AIRFLOW SUMMARY				
EQUIPMENT TAG	SERVICE	SUPPLY CFM	RETURN CFM	OUTSIDE AIR CFM
RTU-1	DINING ROOM	6,150	4,250	1,900
RTU-2	KITCHEN	6,150	4,250	1,900
TOTAL OUTSIDE AIR CFM =				3,800



A6 ROOFTOP HVAC UNIT

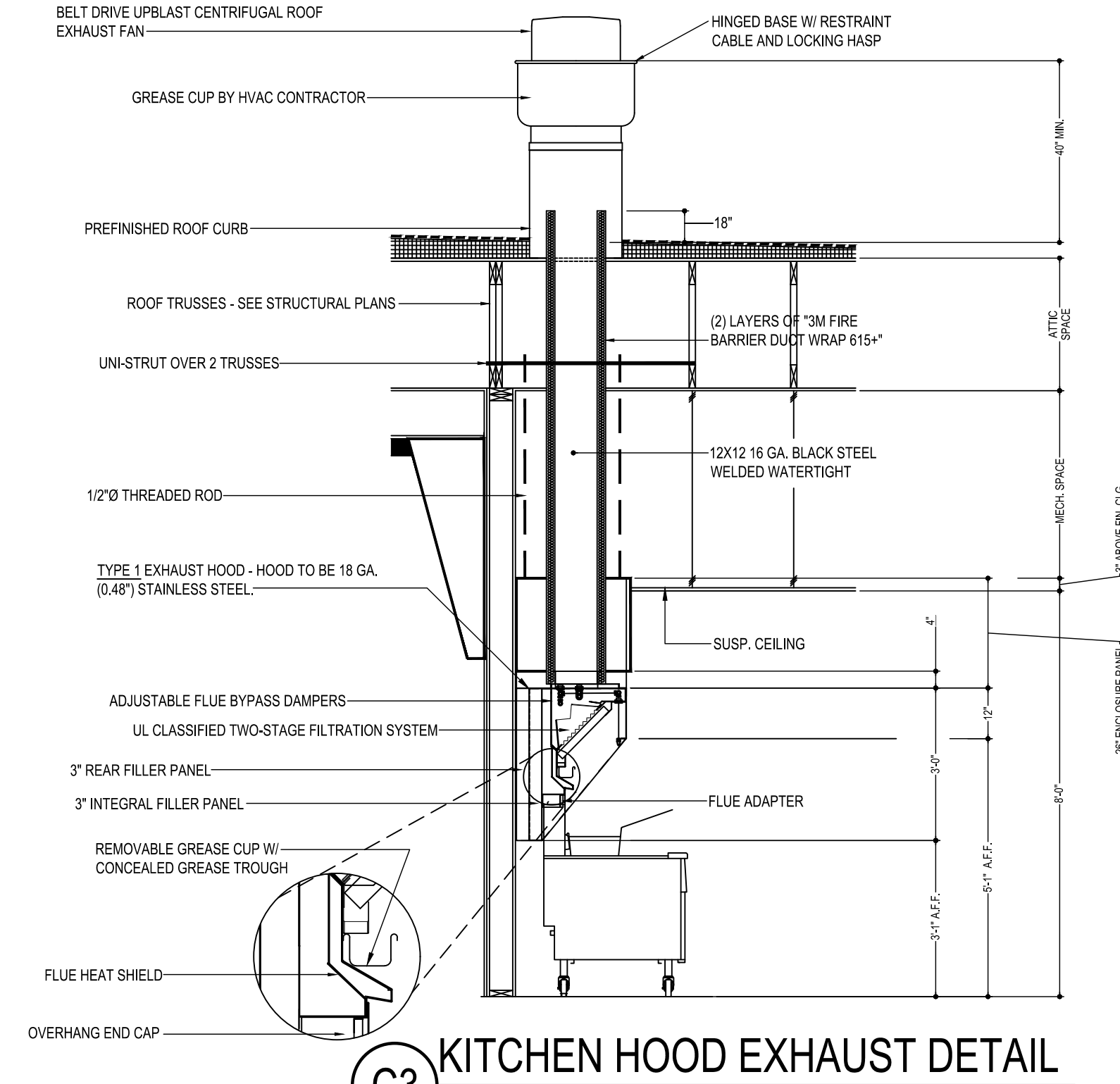
SCALE: N.T.S.

COOKING APPLIANCE / TYPE 1 HOOD INTERLOCK

- REMOTE SWITCH ON - POWER TO KITCHEN FAN CONTROL CENTER (KFCC)
- KFCC CONTROLS:
 - EXHAUST FANS PRV-2 (GRILLE) & PRV-3 (FRYERS) ARE STARTED.
 - OPENS OUTSIDE AIR INTAKE ON RTU-1 & RTU-2 TO MINIMUM FRESH AIR OPENING.
 - POWER TO OUTLETS #51 (GRILLE) & #60 (FRYERS).
- GRILLE & FRYER CAN BE STARTED.
- IN CASE OF FIRE:
 - SHUNT TRIP BREAK FOR GRILLE & FRYERS OUTLET TRIPS.
 - ANSUL SYSTEM IS ACTIVATED.
 - THE MECHANICAL GAS VALVES CLOSES.
 - SHUT DOWN RTU-1 & RTU-2 & CLOSE OUTSIDE AIR.
 - EXHAUST FANS PRV-2 & PRV-3 CONTINUE TO RUN.

GREASE HOOD FIRE SUPPRESSION SYSTEM

WET-CHEMICAL EXTINGUISHING SYSTEMS SHALL BE INSTALLED, MAINTAINED, PERIODICALLY INSPECTED AND TESTED IN ACCORDANCE WITH NFPA 17A AND THEIR LISTING.



C3 KITCHEN HOOD EXHAUST DETAIL

SCALE: N.T.S.
VERIFY MOUNTING HEIGHTS W/ OWNER AND GENERAL CONTRACTOR

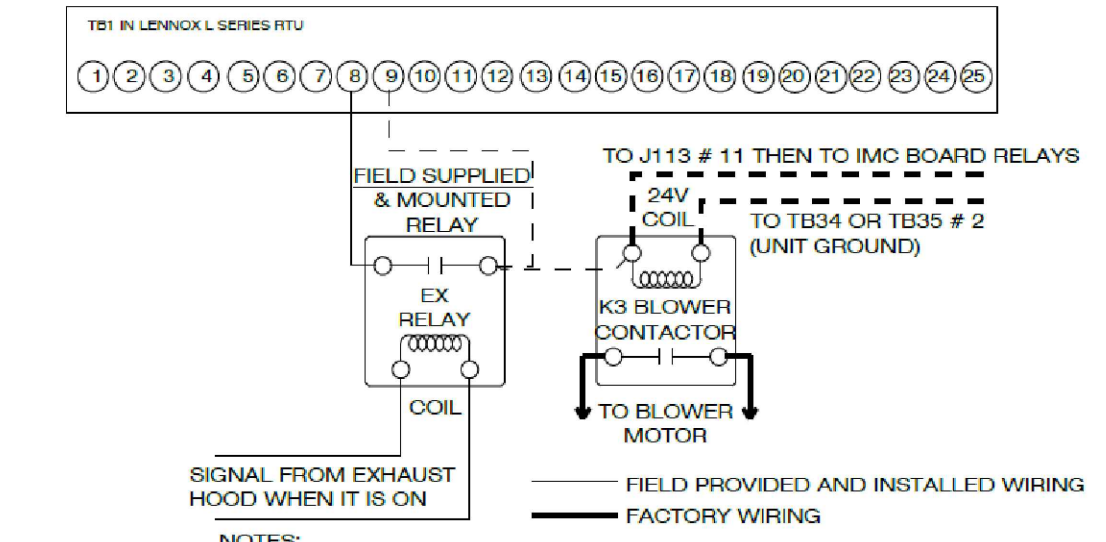
LENNOX SETTINGS FOR CULVERS

KITCHEN UNIT
PARAMETER 3.01 HEAT DELAY NEEDS TO BE SET TO "DISABLED", CONTROL PARAMETER 3.01=0 PG. 92
ECONOMIZER DIP SWITCHES A56 (EM1) NEED TO BE SET TO "GLOBAL" MODE. 1-ON 2-OFF (PG. 5 FIG 8)
ECONOMIZER MIN POSITION POTENTIOMETER NEEDS TO BE DETERMINED AND SET BY AIR BALANCER. (PG. 52 FIG 33)
BOTH THE THERMOSTAT AND THE HOOD FANS MUST BE TIED INTO TB1 TERMINAL 8&9 FOR OCCUANCE CONTROL.
FRESH AIR TEMPERING (HEATING) CONTROL PARAMETER 6.20=142 "55F" (KITCHEN IS USUALLY IN COOLING MODE)
(PARAMETER 6.20 PG 99; X CHARTS PG 109)

DINING ROOM UNIT
PARAMETER 3.01 HEAT DELAY NEEDS TO BE SET TO "DISABLED", CONTROL PARAMETER 3.01=0 PG. 92
ECONOMIZER DIP SWITCHES A56 (EM1) NEED TO BE SET TO ECONOMIZER TYPE PURCHASED/INSTALLED. 1+7 2+7
(PG 5 FIGURE 8)
ECONOMIZER MIN POSITION POTENTIOMETER NEEDS TO BE DETERMINED AND SET BY AIR BALANCER. (PG 52 FIGURE 33)
THE THERMOSTAT MUST BE TIED INTO TB1 TERMINAL 8&9 FOR OCCUANCE CONTROL.
FRESH AIR TEMPERING (HEATING) CONTROL PARAMETER 6.20=142 "68F" (ROOM NEUTRAL)
(PARAMETER 6.20 PAGE 99; X CHARTS PAGE 109)

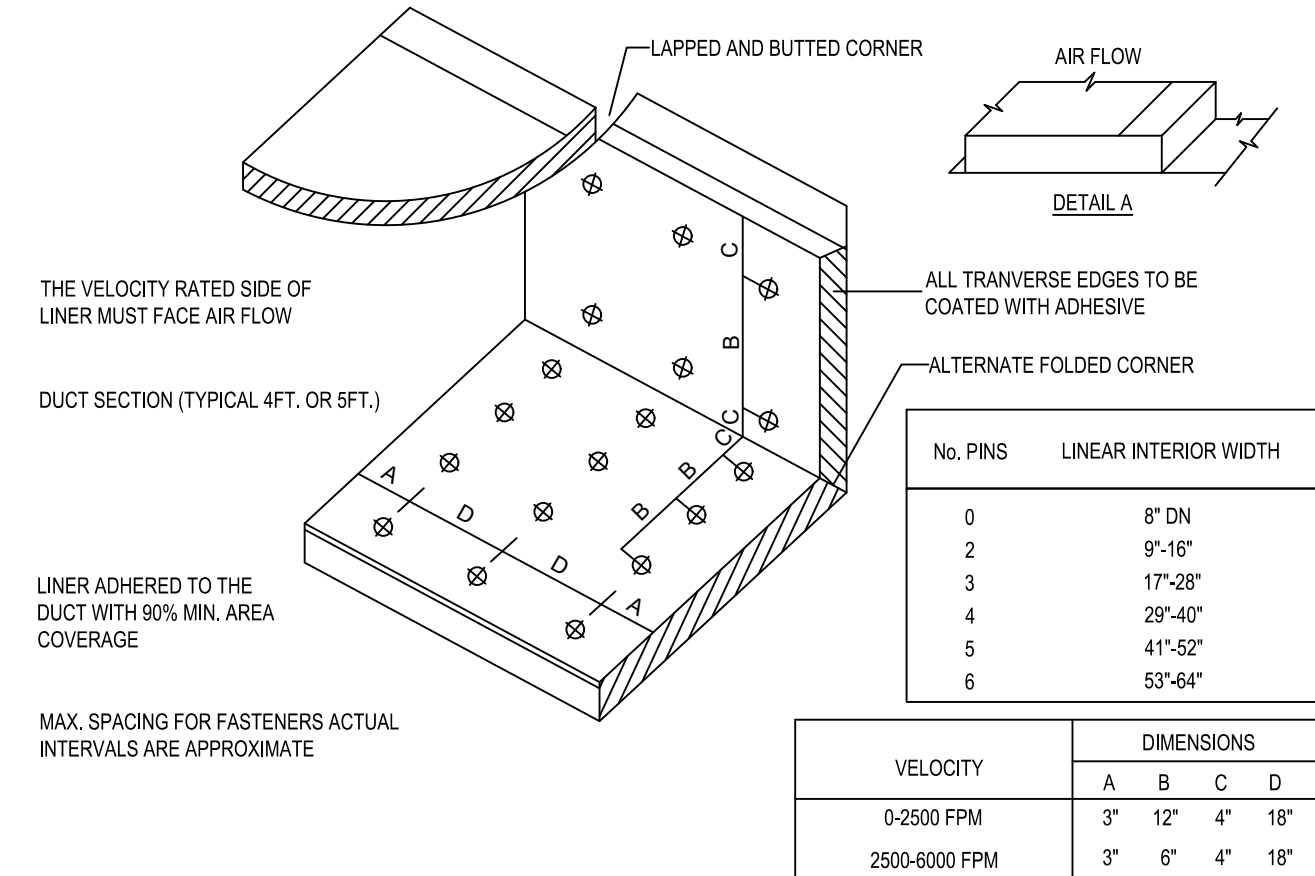
OTHER PARAMETERS THAT WE DIDNT SET, BUT ARE PART OF START-UP:
ROOM SET POINT
REMOTE SENSOR OPERATION
TEMP DEADBANDS

CHECK FOR CORRECT OPERATION AND WIRING OF ALL SENSORS.



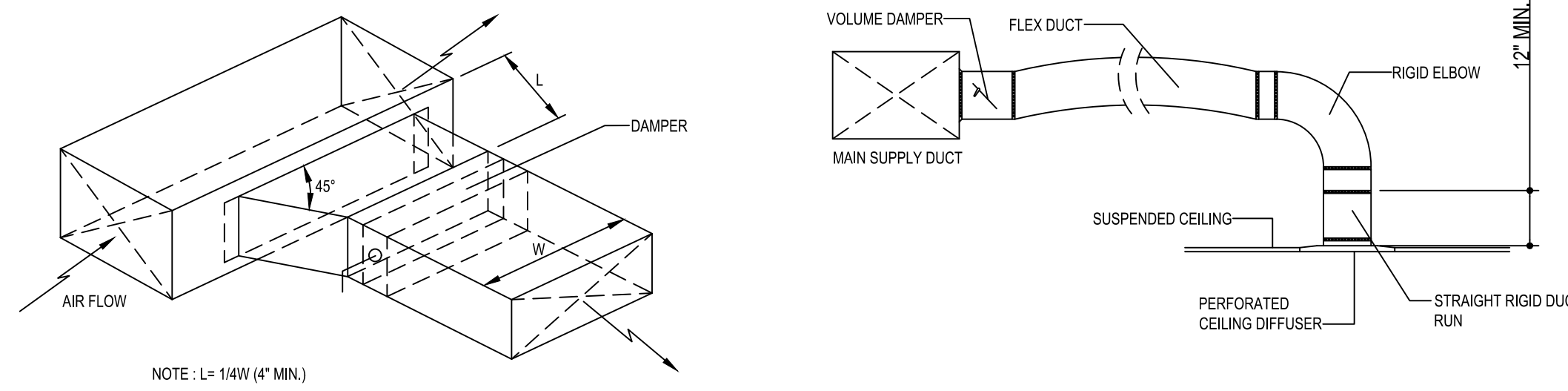
- NOTES:
- EX RELAY AND WIRING PROVIDED AND INSTALLED BY THE MECHANICAL CONTRACTOR.
 - WIRING FROM EX RELAY CONTACTS TO THE COIL OF THE K3 BLOWER CONTACTOR MUST LAND ON THE SAME SIDE AS THE WIRE MARKED J113 # 11.
- CONTACTS FROM KITCHEN EXHAUST FAN STARTER ENERGIZE OPERATOR COIL OF A FIELD PROVIDED AND FIELD INSTALLED RELAY. THE RELAY CONTACTS ARE USED TO MAKE AND BREAK THE OCCUPIED SIGNAL BETWEEN TERMINALS 8 AND 9, ON TB1, AND INSURE K3 BLOWER IS ENERGIZED. CREATING THE OCCUPIED CALL WILL MAKE THE ECONOMIZER MINIMUM POSITIONER ACTIVE, THEREBY MEETING FRESH AIR REQUIREMENTS. ECONOMIZER WILL MODULATE DAMPERS BEYOND MINIMUM POSITION SETTING, WHEN OUTDOOR AIR IS DEEMED SUITABLE FOR COOLING. DAMPERS WILL MODULATE TO TARGET 55 DEG F (DEFAULT) DISCHARGE AIR TEMPERATURE WHEN PROVIDING FREE COOLING.

LENNOX CULVERS EXHAUST FAN INTERLOCK FOR STORES WITHOUT MCP CONTROLLER



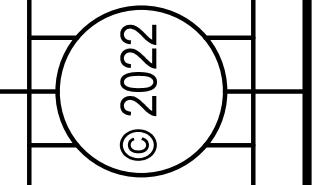
E5 DUCT LINER INSTALLATION DETAIL

SCALE: N.T.S.
NOTE: USE ONLY ON VERTICAL DROP FROM RTU TO WITHIN 9'-10" A.F.F., DUCT LINER WILL NOT BE PERMITTED ON ANY HORIZ. RUNS.



C6 BRANCH DUCT TAKEOFF DETAILS

SCALE: N.T.S.

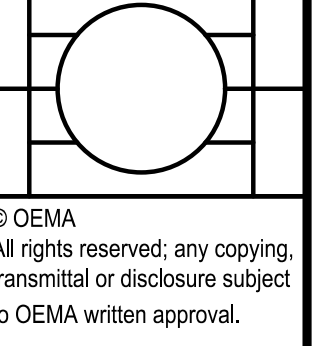


NEW CULVERS RESTAURANT
490 N. RANDALL RD
Batavia, IL 60510
County of KANE

Culvers
Culver Franchising System, Inc.
1240 Water Street
Prairie du Sac, WI 53578
608-843-7980

OWNER:
MISUKA BURGER, LLC
945 Skokie Boulevard
Skokie, IL 60077
Michael Smith
312-287-2705

OLLMANN ERNEST MARTIN ARCHITECTS
200 South State Street
Belvidere Illinois 61008
815-544-7790 Phone

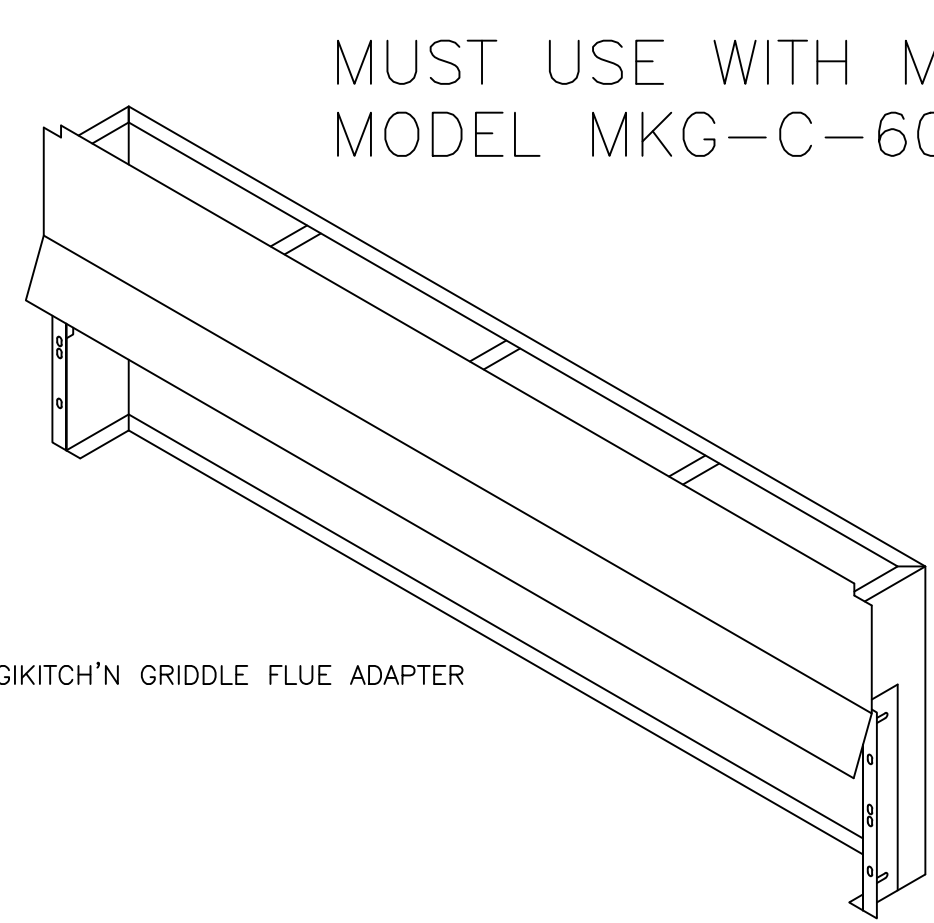
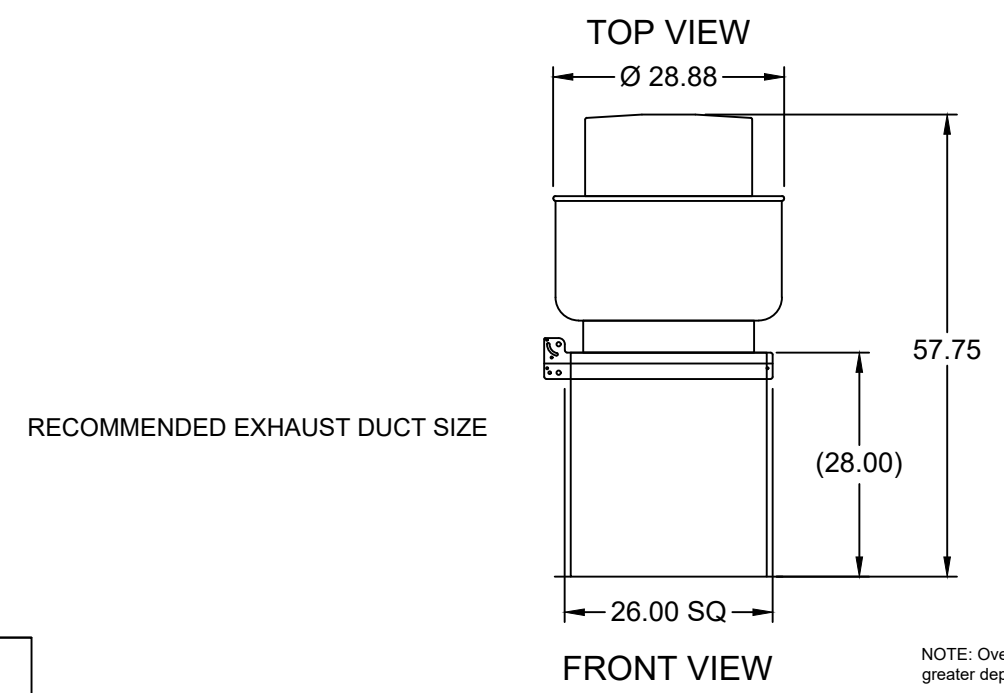
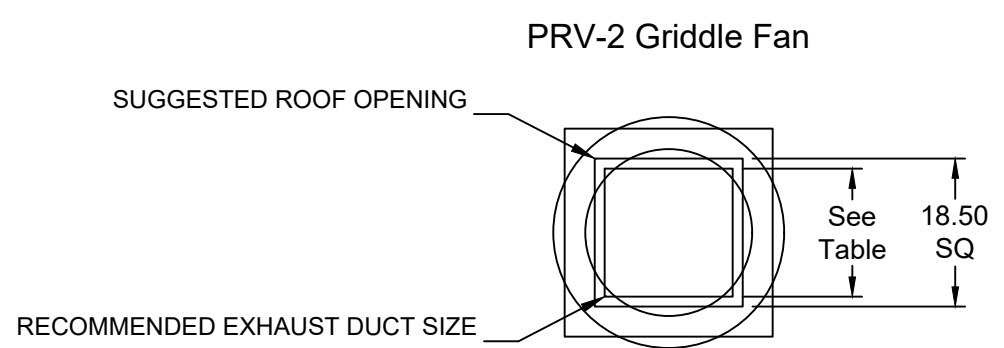


© OEMA
All rights reserved; any copying, transmittal or disclosure subject to OEMA written approval.

HVAC SCHEDULE & DETAILS
Revision:
Date: 4-04-2022

2021-141
M201

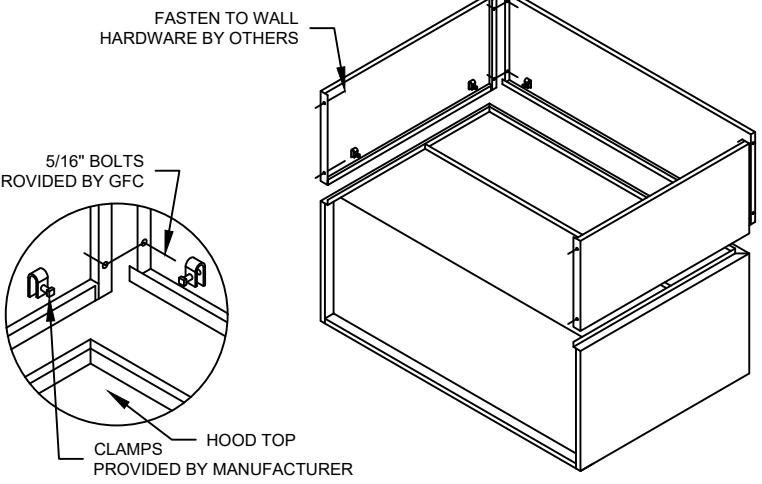
CONSTRUCTION SET 8-26-2022



MUST USE WITH MAGIKITCH'N MODEL MKG-C-60

60" MAGIKITCH'N GRIDDLE FLUE ADAPTER

ENCLOSURE PANEL INSTALLATION DETAIL



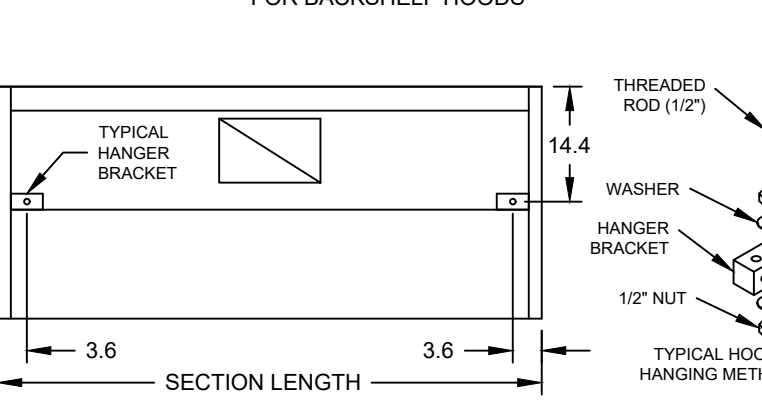
HOOD HANGING HEIGHT FOR FIRE SYSTEMS

VERIFICATION OF HOOD HANGING HEIGHT ABOVE FINISHED FLOOR (A.F.F.) IS REQUIRED FOR CORRECT PLACEMENT OF FIRE SYSTEM NOZZLES.

RECOMMENDED HANGING HEIGHT = 60" FROM FINISHED FLOOR TO LOWER FRONT EDGE OF HOOD.

OTHER HANGING HEIGHT = _____ FROM FINISHED FLOOR TO LOWER EDGE OF HOOD.

HOOD HANGER BRACKET DETAIL FOR BACKSHELF HOODS



GENERAL DRAWING NOTES

Verify building entry conditions or limitations for equipment access to space.

Verify type and height of finished ceiling and if hood(s) may extend above finished ceiling (if required).

Seismic installation and bracing of equipment is by others.

Greenheck will not accept liability for problems that result from sub-standard installation. Including field electrical wiring that deviate from supplied diagrams, globe conditions (ductwork, fuel types and structural conditions) that GFC has not been notified of at the time of ordering. Or use of this equipment other than that for which it is designed.

It is the responsibility of the purchaser to hire qualified personnel for installation and start-up of all equipment. Installation and start-up information is shipped with all equipment via the Installation, Operation and Maintenance Manual (IOM), also included is a troubleshooting guide. Have all start-up info available prior to any warranty claims and/or factory technical support.

VENTILATION SYSTEM NOTES

Greenheck ventilators are designed in compliance with all national codes: NFPA # 96, national electric code, BOCA, uniform mechanical code, international mechanical code, and southern building conference. See national evaluation report #436 for allowable values, and/or conditions of use concerning material presented in this document. Local codes may vary. It is the responsibility of the purchaser to submit drawings to local authorities.

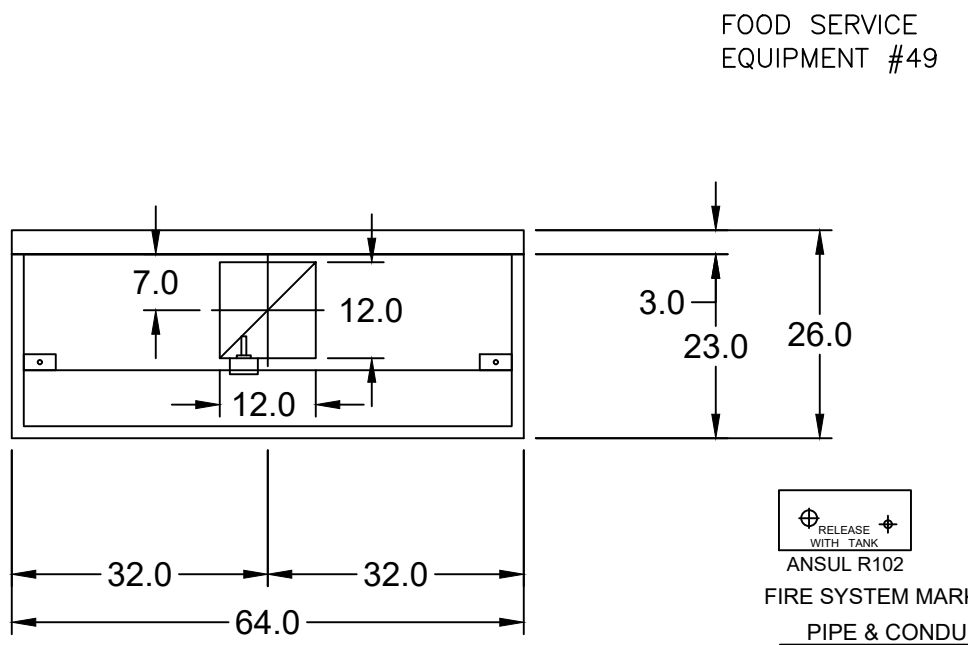
Exhaust and supply air volumes are to be maintained within -5% to +10% tolerance of values indicated. Static pressure(s) indicated are for the ventilator at the duct connection(s) only.

The grease filter face velocities are based on the filter manufacturers recommendations for maximum grease extraction. Inlet opening air velocities for waterwash, dry cartridge and high velocity cartridge filters manufactured by Greenheck are designed to deliver maximum grease extraction.

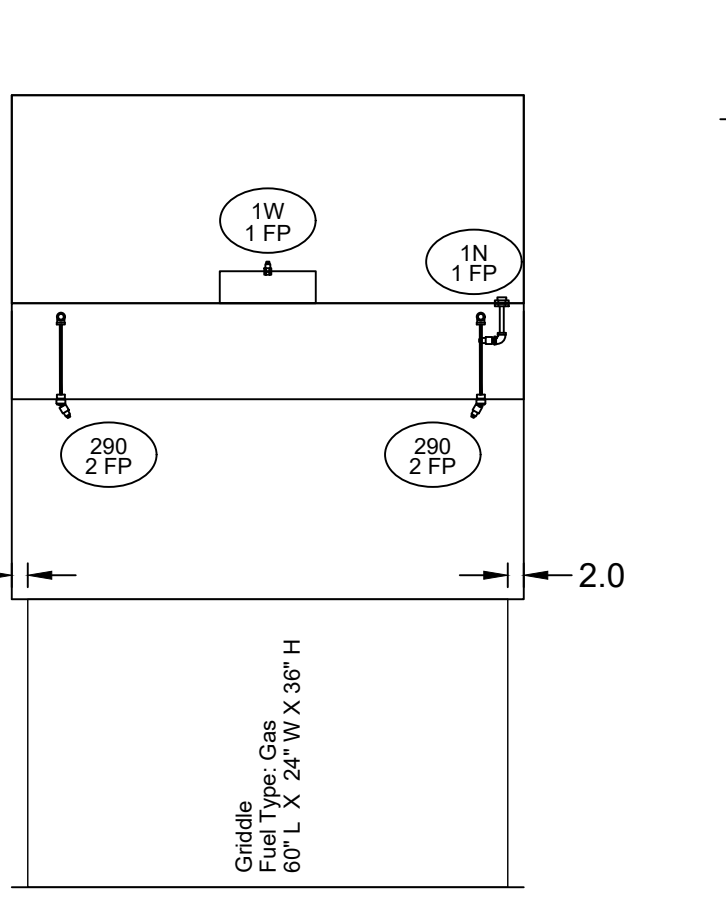
Hoods installation (by others unless otherwise noted) shall be in accordance with NFPA # 96 and applicable building codes.

PROPRIETARY INFORMATION NOTICE

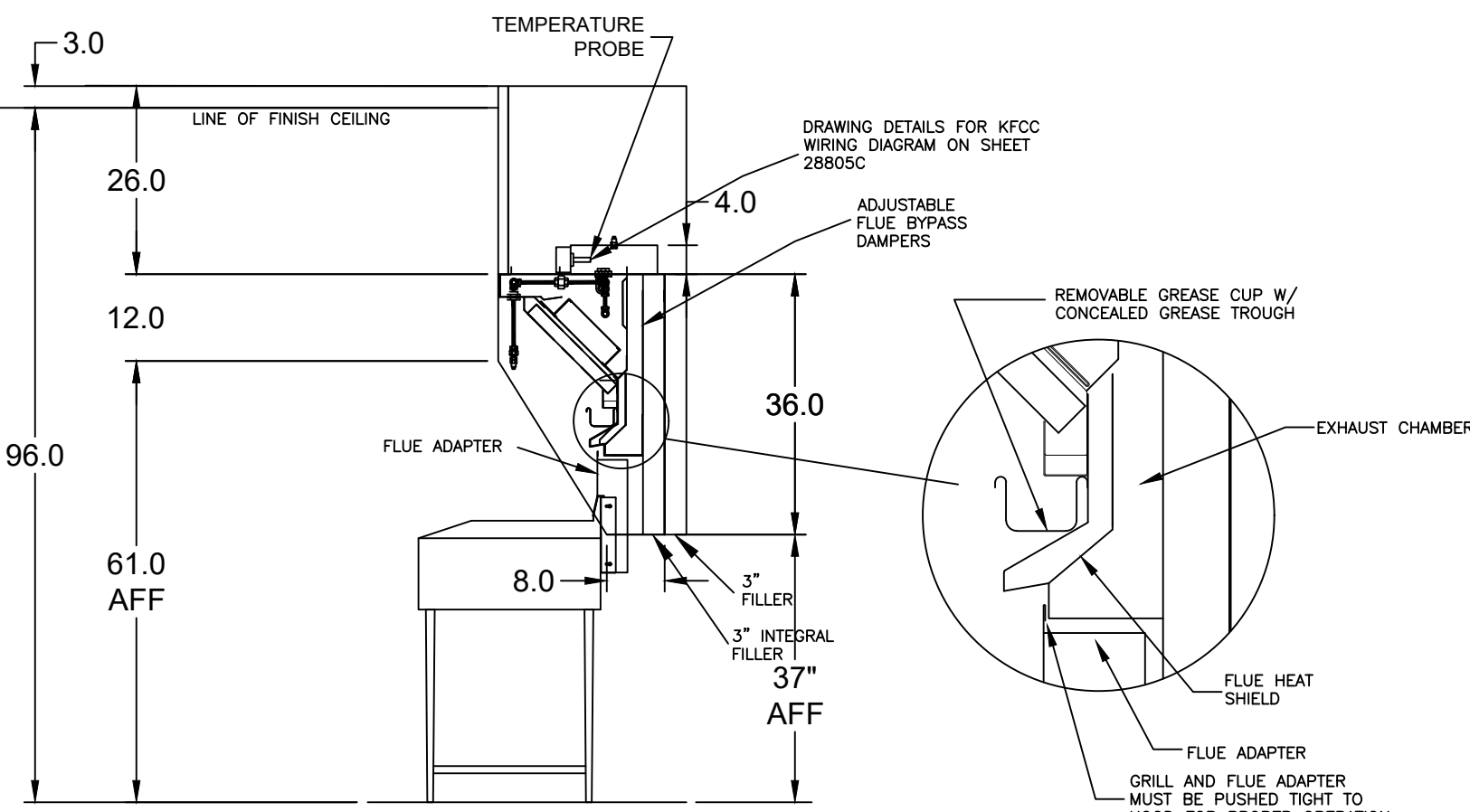
This document is and contains confidential trade secret information of the company and remains property of the company and is to be returned upon request. Neither it nor information it contains may be reproduced or disclosed to persons not having a need-to-know consistent with the purpose of the loan document without written permission.



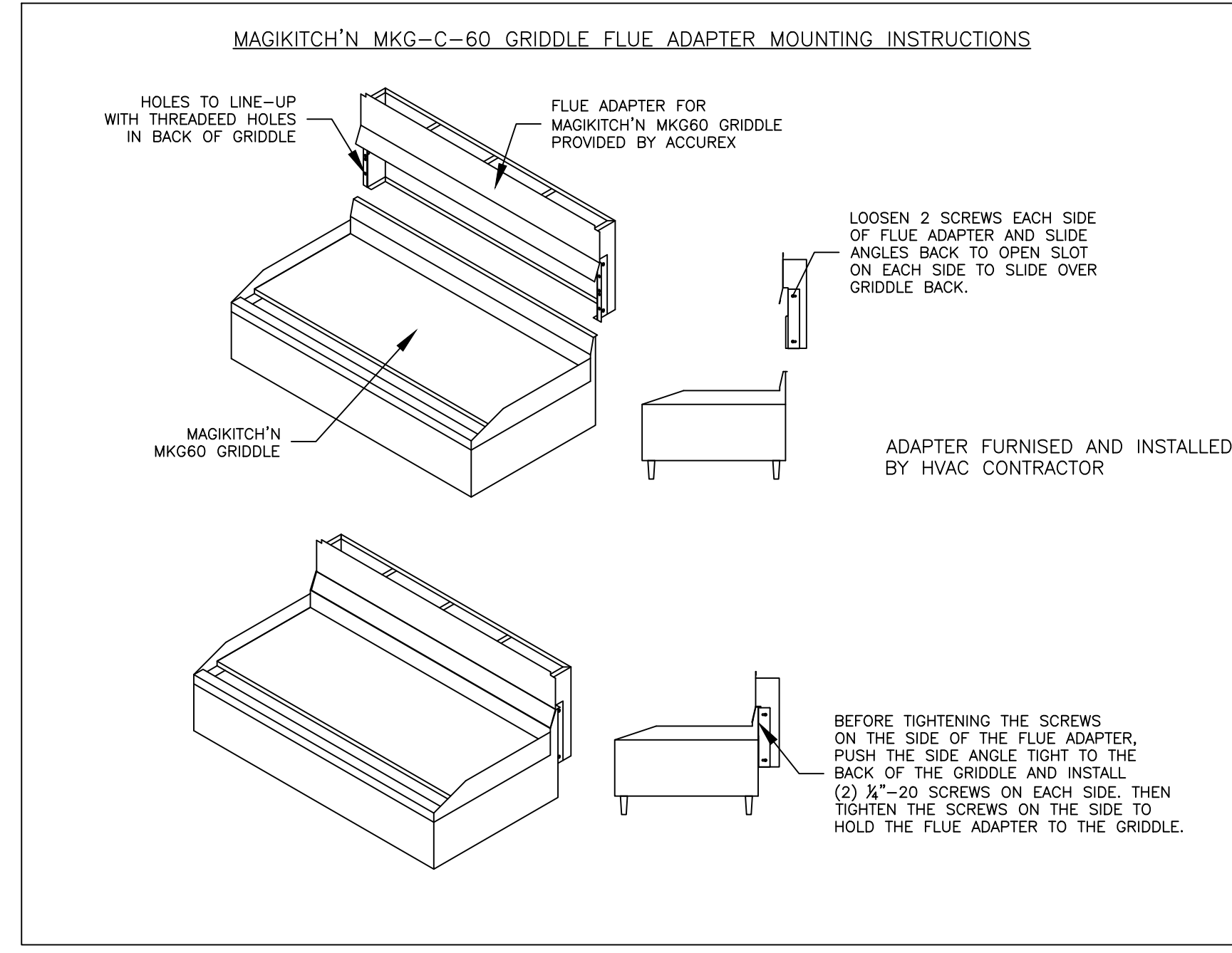
MARK: ITEM #49 PLAN VIEW



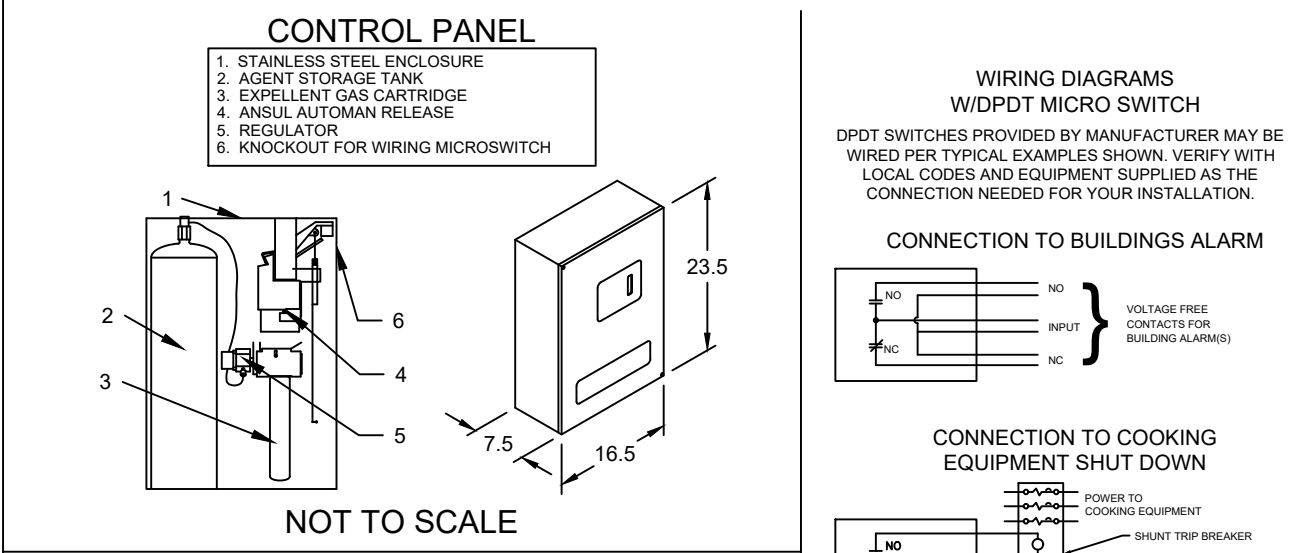
MARK: ITEM #49 ELEVATION VIEW



MARK: ITEM #49 SECTION VIEW



ANSUL R102 (WET CHEMICAL) FIRE PROTECTION SYSTEM - MODEL FSSC



NOTES:

Wet chemical fire protection system to be Ansul R-102, designed in compliance with UL 300 requirements.

- Verification of all cooking equipment make, model and location required for all fire protection systems.
- All fire system piping is standard to the right end of the hood unless a wall is located on the right end.
- Ansul Automaton Release to be located within 60" of hood.

The basic fire system will include the following:

- Gas shut-off valve, if required, to be supplied by Manufacturer (up to 2" diameter as standard), and installed by a licensed plumber.
- Micro switch to be supplied by Manufacturer for connection to, but not limited to, building alarm system(s), exhaust and supply fans and electrical power shut-down. Field wiring and connections to be performed by a licensed electrician.

The basic fire system does NOT include the following:

- Full dump test other than what is specified per the installation manual, or to satisfy a state or local code. Permit and testing fees are not included unless noted under the equipment schedule for the fire system.
- More than two trips to the jobsite or special transportation, or overnight lodging requirements in remote areas. Normal travel distance is first 50 mi. (80.5 km) from office.
- Special classes or additional labor for access to security sensitive areas.
- Installation of gas shut-off valve.
- Special drawings required to satisfy state or local code. Plan examination fees, PE or FS Approval Stamp.
- Union labor, Government labor, or Prevailing wages required for final field hook-up.
- Any and all electrical components/connections required to shut down fans, shut off device for electric cooking equipment (shunt trip breaker), or activate an alarm system, etc.
- Any dismantling or reassembly required to gain access to the fire suppression piping located on the top of the hood.
- Rough-in hidden conduit for remote pull station or gas valve (flush mounted pull station) located on the top of the hood.
- Installation of more than (1) remote pull station or distances greater than 20 ft (6.1M).
- Parts or labor required to correct piping due to cooking equipment changes or deviation from plans. OR Any changes for missing or additional parts other than those indicated on the Fire Suppression Detail.

Thank you for your interest in Accurex

SUBMITTAL

Please return one approved print to your Greenheck Representative including signature, date, and answers to all submittal "verify" notes and questions. Fabrication will not begin until after approved drawings are received.

APPROVED AS SUBMITTED

APPROVED AS NOTED

REJECTED - REVISE AND RESUBMIT

SIGNATURE _____ DATE _____

EQUIPMENT SCHEDULE												
TYPE 1 KITCHEN HOOD					MARK: ITEM#49							
HOOD NO.	ACCUREX MODEL STYLE / CONFIGURATION	HOOD DIMENSIONS			GREASE CUP OR DRAIN	HOOD TEMP. RATING	TOTAL WEIGHT	SECTION LOCATION	MARK: ITEM#49			
		SECTION LENGTH	WIDTH	HEIGHT					MARK: ITEM#49	MARK: ITEM#49		
1	XGEP-66-S SINGLE WALL EXHAUST ONLY LOW PROXIMITY	64 IN.	TOP 23 IN. FRONT 12 IN. BOT 8 IN. BACK 36 IN.	RIGHT	600 DEG F	136.0 LBS.	SINGLE					
ILLUMINATION DETAILS												
HOOD NO.	FIXTURE TYPE	QTY	INTENSITY FT CANDLES	TYPE / MODEL MATERIAL	QTY	LENGTH	HEIGHT					
1	NONE	NA	0 / 0 IN. CC	GREASE GRABBER STAINLESS STEEL	4	16 IN.	16 IN.					
EXHAUST PLENUM COLLARS												
HOOD SECTION #	COLLAR #	DISTANCE TO END (IN.)	WIDTH (IN.)	LENGTH (IN.)	DIAMETER (IN.)	VOLUME (CFM)	S.P. (IN. WC)	VELOCITY (FT/MIN)				
1	1.1	32	12	12	NA	1500	1.918	1500				
TOTAL EXHAUST CFM - SECTION 1		1500 = 281 CFM / FT										
OPTIONS AND ACCESSORIES												
430 STAINLESS STEEL WHERE EXPOSED												
UL 710 LISTED W/ OUT EXHAUST FIRE DAMPER - UL #R25625												
BACK NON-INTEGRAL AIR SPACE - 3 IN WIDE												
28 IN HIGH CEILING ENCLOSURES - FRONT LEFT RIGHT - FIELD INSTALLED												
FACTORY MOUNTED EXHAUST COLLAR(S)												
THIS HOOD IS PART OF A TEMPERATURE INTERLOCK CONTROL SYSTEM												
INCLUDES PERFORMANCE ENHANCING LIP (PEL) TECHNOLOGY												
STANDING SEAM CONSTRUCTION FOR SUPERIOR STRENGTH												
EMBOSSED STAINLESS STEEL FINISH FOR HIGH CORROSION RESISTANCE												
EQUIPMENT SPECIFIC S/S FLUE ADAPTER												
SPECIAL DESIGN REQUESTS												
SDR #K1100145 - FLUE BYPASS HOOD												
FIRE SUPPRESSION SYSTEM												
MARK: FS FOR GRILL HOOD												
MANUFACTURER / MODEL	SUPPRESSANT TYPE	FLOW POINTS	SUPPLY LINE	DETECTION	MOUNTING							
ANSUL R-102 WET CHEMICAL	WET CHEMICAL	6 UTILIZED 11 AVAILABLE	CONTINUOUS	FUSIBLE LINK	REMOTE MOUNTED							
FULL INSTALLATION (INCLUDES PRE-PIPED HOODS) WITH DETECTION AND FACTORY COORDINATED INSTALL												
CHROME SLEEVES FOR FACTORY PROVIDED APPLIANCES DROPS - INCLUDED												
SUPPRESSION AGENT - INCLUDED - 3 GAL. - (1) 3 TANK(S)												
GAS VALVE - INCLUDED - MECHANICAL SHUTOFF VALVE SUPPLIED UP TO 2"												
REMOTE PULL STATION - STANDARD - INSTALLATION AT SINGLE POINT OF EGRESS												
METAL BLOW-OFF CAPS - INCLUDED												
FIRE SYSTEM PERMIT - REQUIRED - FEE INCLUDED												
360°F. FUSIBLE LINK OR AS TESTED AND INSTALLED BY LOCAL INSTALLER PER UL MANUAL												
FIRE SYSTEM PROTECTED HOOD(S) (UL-300) (MARK NAME / SECTION)												
GRILL HOOD SECTION 1 - (LENGTH 64.0 IN.) - LOW PROXIMITY HOOD - GREASE GRABBER FILTRATION SYSTEM												
Belt Drive Upblast Centrifugal Roof Exhaust Fan												
Qty	Accurex Model	Volume (CFM)	SP (in wg)	FRPM	Operating Power (hp)	Weight (lb.)	Size (tp)	V/CP	Enct.	Motor RPM	Windings	FLA
1	XRUB-160XP-15	1500	2.337	2,411	1.29	171	1.5	208/60/3	CP	1725	1	6.6
OPTIONS AND ACCESSORIES												
UL/GUL 762 Listed - "Power Ventilators for Rest. Exh. Appliances"												
Switch, NEMA-1, (PN N1TSND-3-30) Toggle. Shipped with unit												
Larger curb cap size - 28" Square												
Roof curb-Galv., GPF-26-G28, Under sized 1.5" Total												
Hinged Base (Attached)												
High Temp Curb Seal Rated for Continuous duty at 2000F (Attached)												
Clean-out Port												
Grease Trap with Drain Connection (PN 475538)												
Heat Baffle (Attached)												
Bearings with Grease Fittings, L10 life of 100,000 hrs (L50 avg. life 500,000 hrs)												

© 2022

NEW CULVER'S RESTAURANT
490 N. RANDALL RD
Batavia, IL 60510
County of KANE

OWNER:
MISUKA BURGER, LLC
9455 Skokie Boulevard
Skokie, IL 60077
Michael Smith
312-287-2705

ARCHITECTS:
OLLMANN ERNEST MARTIN ARCHITECTS
200 South State Street
Belvidere Illinois 61008
815-544-7190 Phone

© OEMA
All rights reserved; any copying, transmission or disclosure subject to OEMA written approval.

Revision: _____
Date: 4-04-2022

2021-141
M202

CONSTRUCTION SET 8-26-2022

REV	DESCRIPTION	DATE

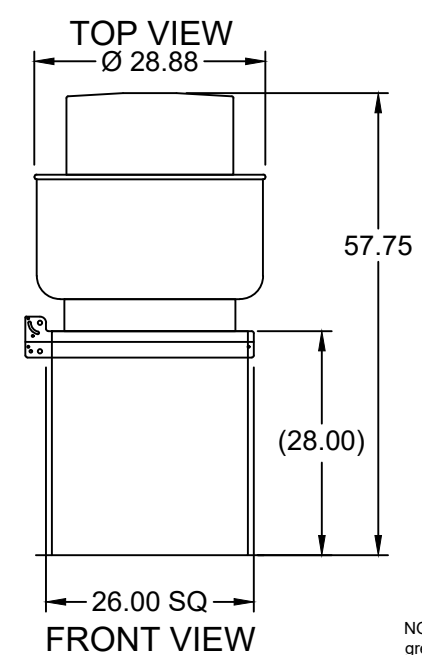
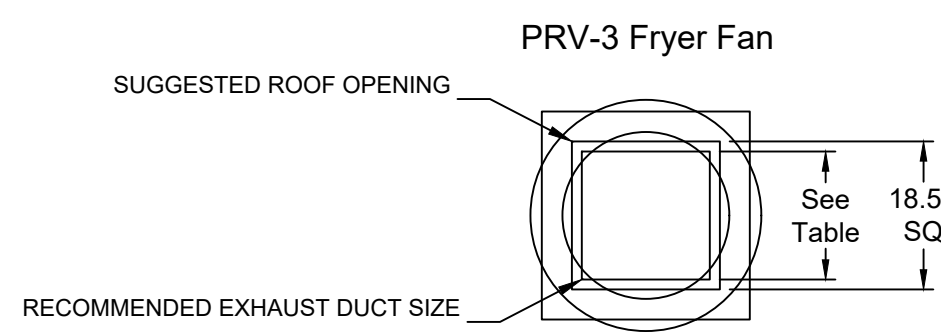
ACCUREX

CULVER'S MASTER TEMPLATE

SCALE: 1/24

DATE: 4-04-2022

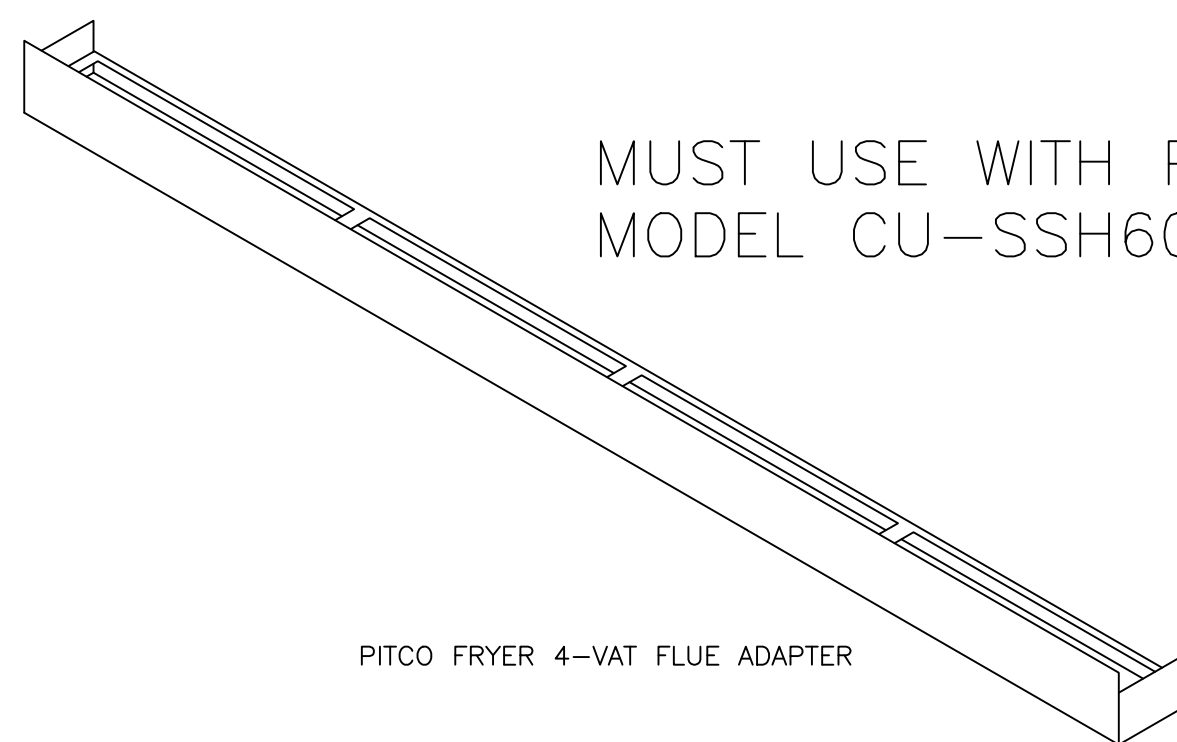
NO. 28805A



NOTE: Overall height may be greater depending on motor.

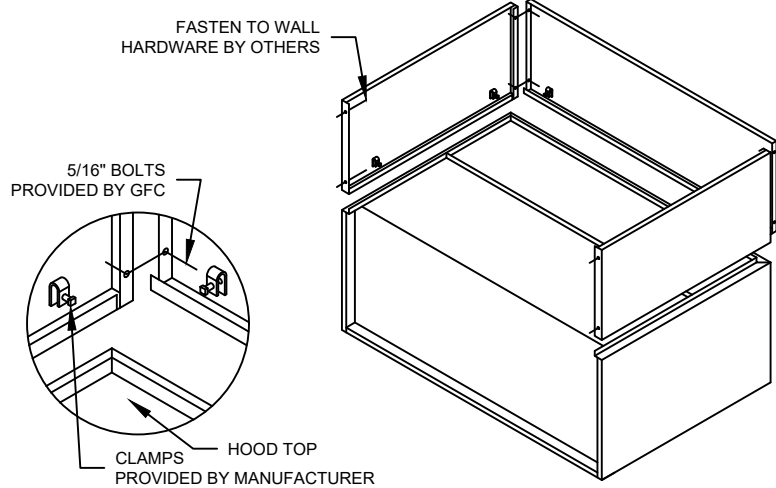
4-VAT FRYER BATTERY

MUST USE WITH PITCO MODEL CU-SSH60W



PITCO FRYER 4-VAT FLUE ADAPTER

ENCLOSURE PANEL INSTALLATION DETAIL



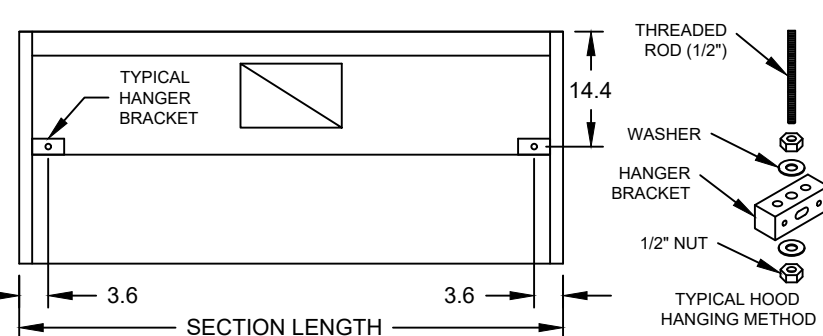
HOOD HANGING HEIGHT FOR FIRE SYSTEMS

VERIFICATION OF HOOD HANGING HEIGHT ABOVE FINISHED FLOOR (A.F.F.) IS REQUIRED FOR CORRECT PLACEMENT OF FIRE SYSTEM NOZZLES.

RECOMMENDED HANGING HEIGHT = 60" FROM FINISHED FLOOR TO LOWER FRONT EDGE OF HOOD.

OTHER HANGING HEIGHT = _____ FROM FINISHED FLOOR TO LOWER EDGE OF HOOD.

HOOD HANGER BRACKET DETAIL FOR BACKSHELF HOODS



GENERAL DRAWING NOTES

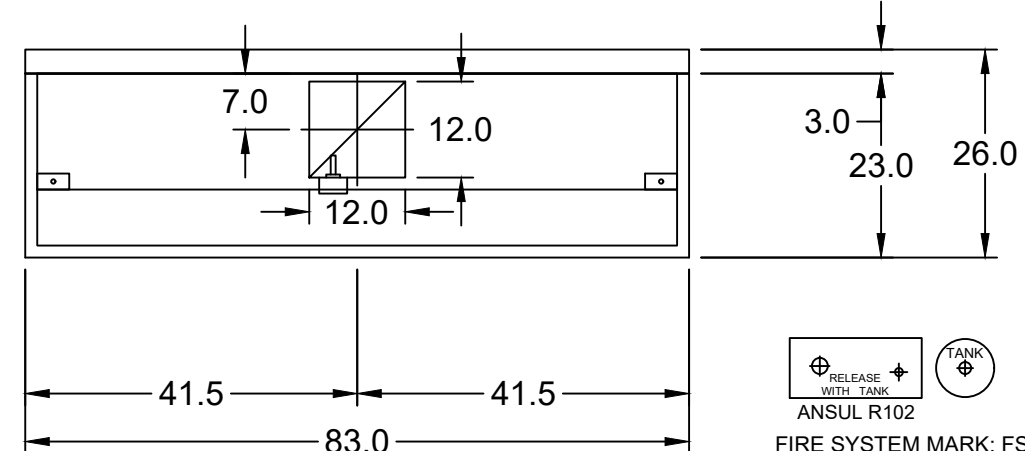
Verify building entry conditions or limitations for equipment access to space.
 Verify type and height of finished ceiling and if hood(s) may extend above finished ceiling (if required).
 Seismic installation and bracing of equipment is by others.
 Greenheck will not accept liability for problems that result from sub-standard installation. Including field electrical wiring that deviate from supplied diagrams, globe conditions (ductwork, fuel types and structural conditions) that GFC has not been notified of at the time of ordering. Or use of this equipment other than that for which it is designed.
 It is the responsibility of the purchaser to hire qualified personnel for installation and start-up of all equipment. Installation and start-up information is shipped with all equipment via the Installation, Operation and Maintenance Manual (IOM), also included is a troubleshooting guide. Have all start-up info available prior to any warranty claims and/or factory technical support.

VENTILATION SYSTEM NOTES

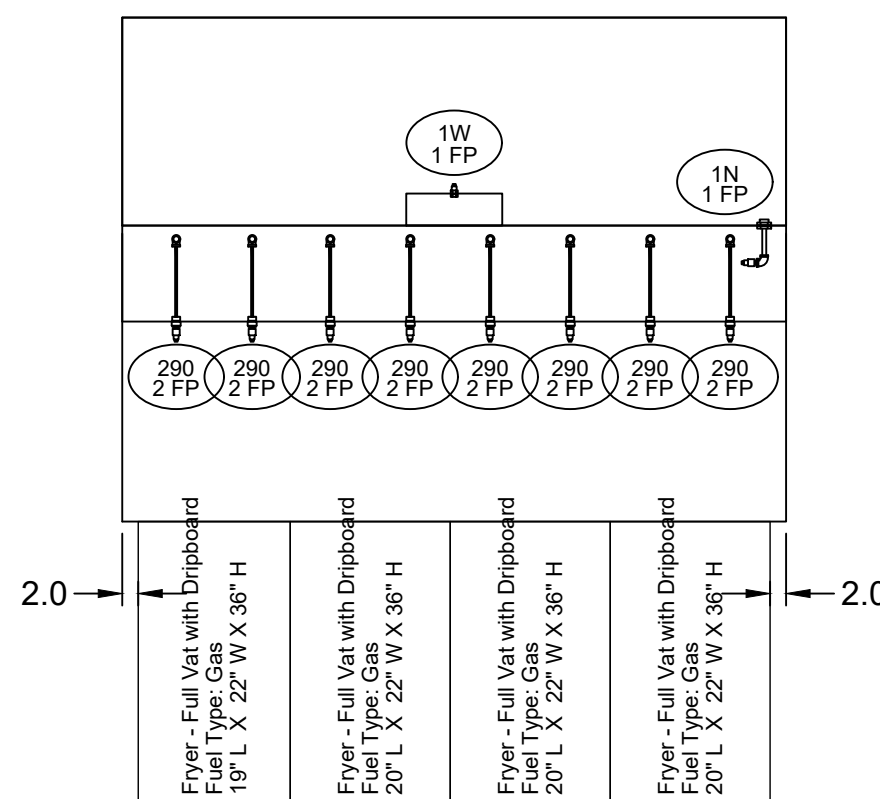
Greenheck ventilators are designed in compliance with all national codes: NFPA # 96, national electric code, BOCA, uniform mechanical code, international mechanical code, and southern building conference. See national evaluation report #436 for allowable values, and/or conditions of use concerning material presented in this document. Local codes may vary. It is the responsibility of the purchaser to submit drawings to local authorities.
 Exhaust and supply air volumes are to be maintained within -5% to +10% tolerance of values indicated. Static pressure(s) indicated are for the ventilator at the duct connection(s) only.
 The grease filter face velocities are based on the filter manufacturers recommendations for maximum grease extraction. Inlet opening air velocities for waterwash, dry cartridge and high velocity cartridge filters manufactured by Greenheck are designed to deliver maximum grease extraction.
 Hoods installation (by others unless otherwise noted) shall be in accordance with NFPA # 96 and applicable building codes.

PROPRIETARY INFORMATION NOTICE

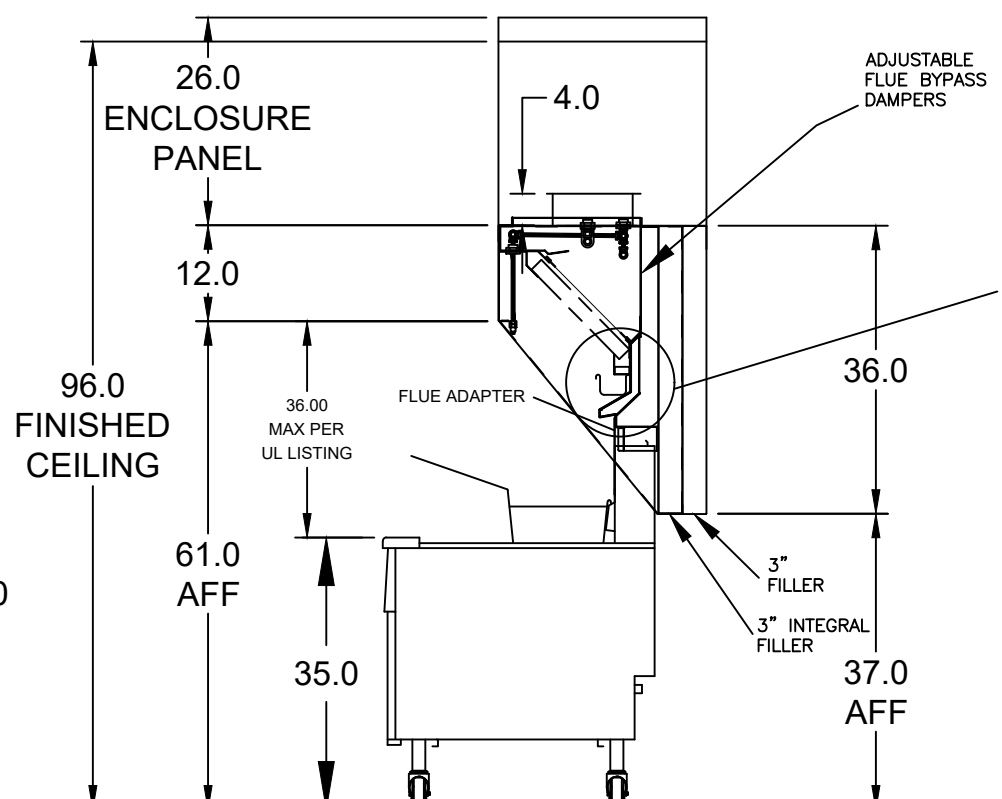
This document is and contains confidential trade secret information of the company and remains property of the company and is to be returned upon request. Neither it nor information it contains may be reproduced or disclosed to persons not having a need-to-know consistent with the purpose of the loan document without written permission.



MARK: ITEM #59 PLAN VIEW

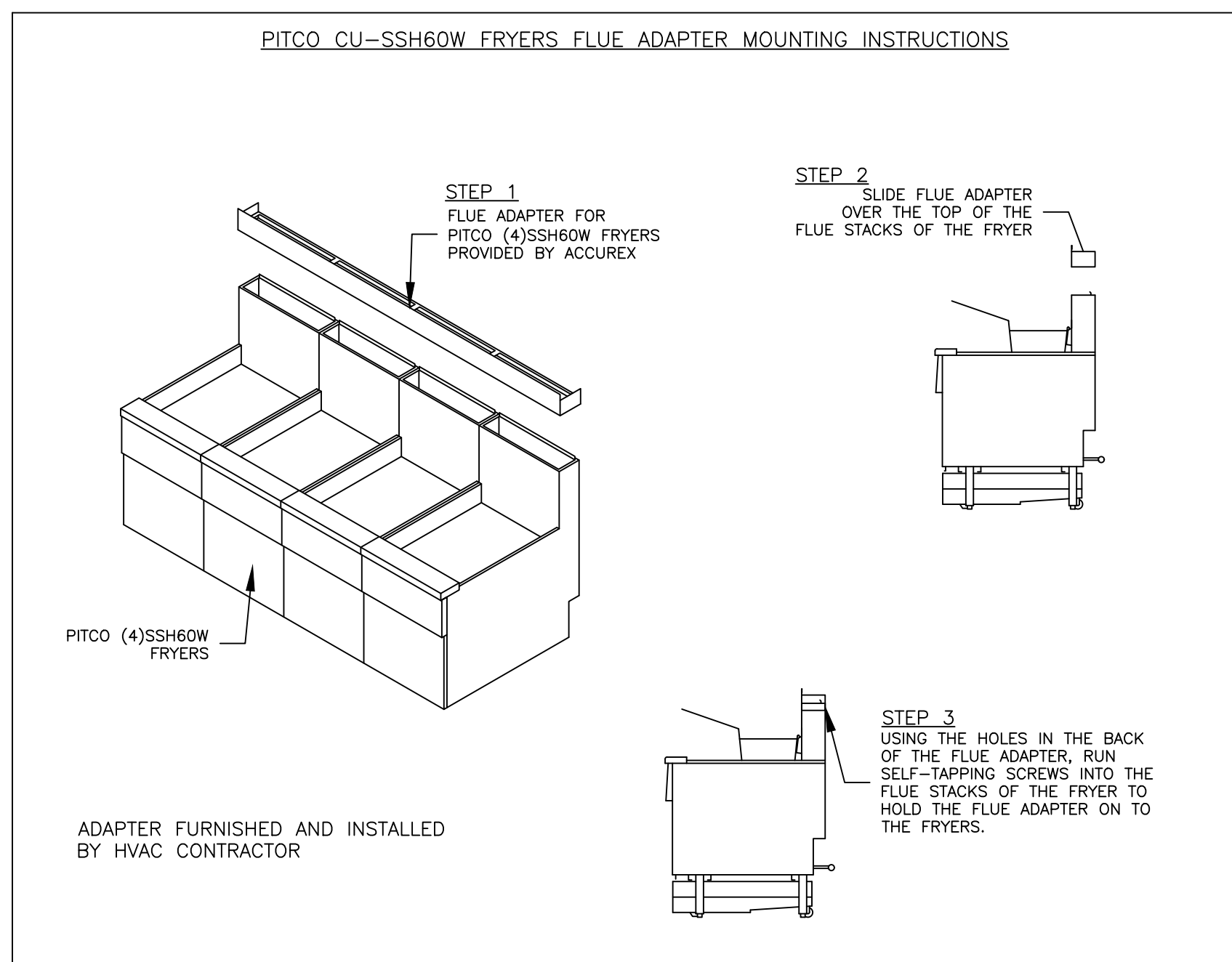


MARK: ITEM #59 ELEVATION VIEW

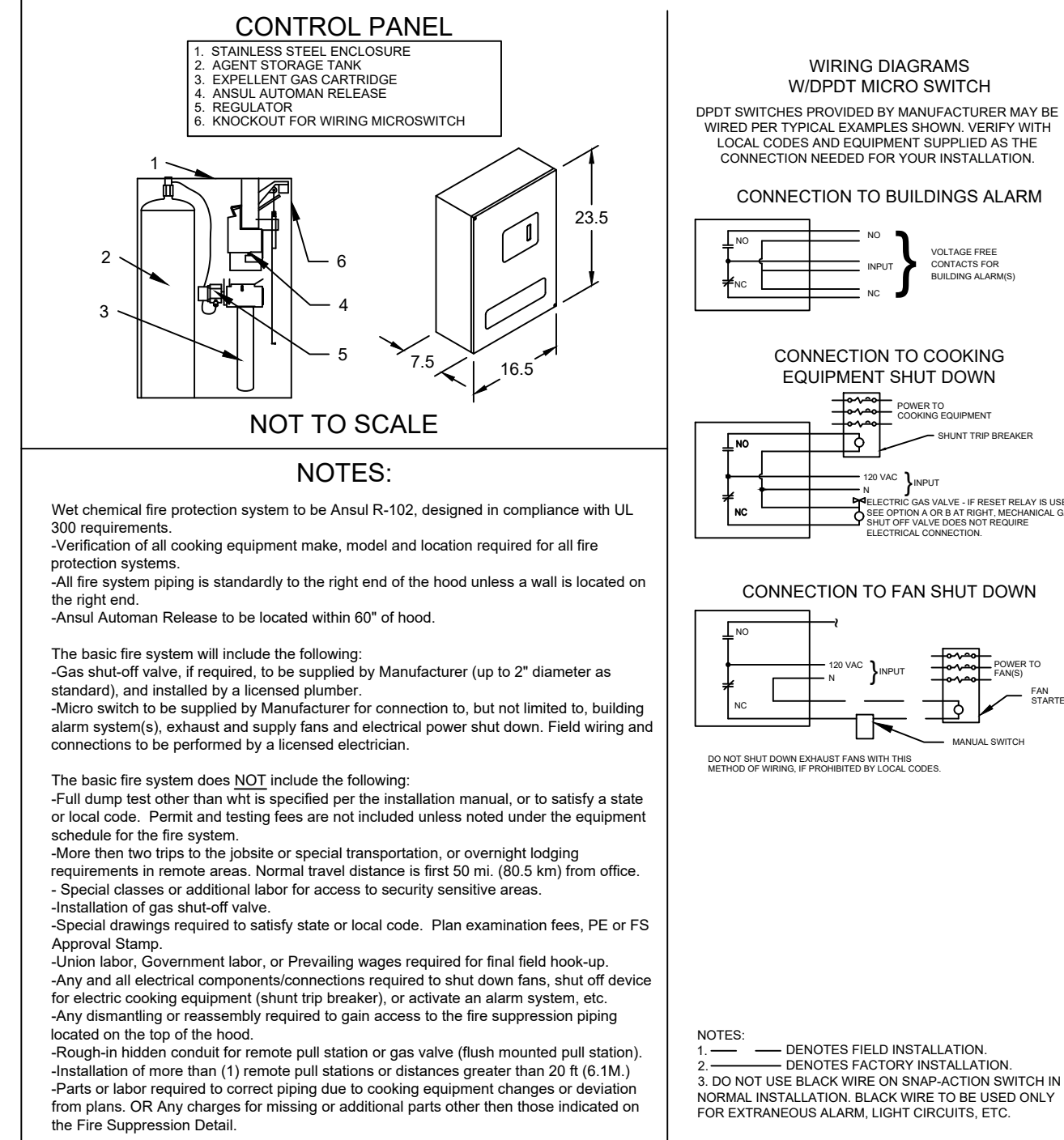


MARK: ITEM #59 SECTION VIEW

PITCO CU-SSH60W FRYERS FLUE ADAPTER MOUNTING INSTRUCTIONS



ANSUL R102 (WET CHEMICAL) FIRE PROTECTION SYSTEM - MODEL FSSC



Thank you for your interest in Accurex

SUBMITTAL

Please return one approved print to your Greenheck Representative including signature, date, and answers to all submital "verify" notes and questions. Fabrication will not begin until after approved drawings are received.

APPROVED AS SUBMITTED
 APPROVED AS NOTED
 REJECTED - REVISE AND RESUBMIT

SIGNATURE _____ DATE _____

EQUIPMENT SCHEDULE												
TYPE 1 KITCHEN HOOD					MARK: ITEM #59							
HOOD NO.	ACCUREX MODEL STYLE / CONFIGURATION	HOOD DIMENSIONS			GREASE CUP OR DRAIN	HOOD TEMP. RATING	TOTAL WEIGHT	SECTION LOCATION				
		SECTION LENGTH	WIDTH	HEIGHT								
1	SINGLE WALL EXHAUST ONLY LOW PROXIMITY	83 IN.	TOP 23 IN. FRONT 12 IN. BOT 3 IN. BACK 35 IN.	RIGHT	600 DEG F	169.0 LBS.	SINGLE					
ILLUMINATION DETAILS												
HOOD NO.	FIXTURE TYPE	QTY	INTENSITY	TYPE / MODEL MATERIAL		QTY	LENGTH	HEIGHT				
1	NONE	NA	0 / 0 IN. OC	X-TRACTOR STAINLESS STEEL		5	16 IN.	16 IN.				
EXHAUST PLENUM COLLARS												
HOOD SECTION #	COLLAR #	DISTANCE TO END (IN.)	WIDTH (IN.)	LENGTH (IN.)	DIAMETER (IN.)	VOLUME (CFM)	S.P. (IN. WC)	VELOCITY (FT/MIN)				
1.1		41.5	12	12	NA	1500	0.518	1500				
TOTAL EXHAUST CFM - SECTION 1		1500 = 217 CFM / FT										
OPTIONS AND ACCESSORIES												
430 STAINLESS STEEL WHERE EXPOSED UL 710 LISTED W/ OUT EXHAUST FIRE DAMPER - UL #R25625 BACK NON-INTEGRAL AIR SPACE - 3 IN WIDE 26 IN HIGH CEILING ENCLOSURES - FRONT LEFT RIGHT - FIELD INSTALLED FACTORY MOUNTED EXHAUST COLLAR(S) THIS HOOD IS PART OF A TEMPERATURE INTERLOCK CONTROL SYSTEM INCLUDES PERFORMANCE ENHANCING LIP (PEL) TECHNOLOGY STANDING SEAM CONSTRUCTION FOR SUPERIOR STRENGTH EMBOSSED STAINLESS STEEL FINISH FOR HIGH CORROSION RESISTANCE EQUIPMENT SPECIFIC S/S FLUE ADAPTER												
SPECIAL DESIGN REQUESTS												
SDR #K1100559 - NEW 4L FRYER SYSTEM												
FIRE SUPPRESSION SYSTEM												
MANUFACTURER / MODEL SUPPRESSANT TYPE		FLOW POINTS	SUPPLY LINE	DETECTION	MARK: FS FOR FRYER HOOD MOUNTING							
ANSUL R-102 WET CHEMICAL		18 UTILIZED 22 AVAILABLE	CONTINUOUS	FUSIBLE LINK	RIGHT END REMOTE MOUNTED							
FULL INSTALLATION (INCLUDES PRE-PIPED HOOD(S) WITH DETECTION AND FACTORY COORDINATED INSTALL) CHROME SLEEVES FOR FACTORY PROVIDED APPLIANCES DROPS - INCLUDED SUPPRESSION AGENT - INCLUDED - 4 GAL. - (2) 3.0 TANK(S) GAS VALVE - INCLUDED - MECHANICAL SHUTOFF VALVE, SUPPLIED UP TO 2" REMOTE PULL STATION - STANDARD - INSTALLATION AT SINGLE POINT OF EGRESS METAL BLOW-OFF CAPS - INCLUDED FIRE SYSTEM PERMIT - REQUIRED - FEE INCLUDED 500' F. FUSIBLE LINK OR AS TESTED AND INSTALLED BY LOCAL INSTALLER PER UL MANUAL												
FIRE SYSTEM PROTECTED HOOD(S) (UL-300) (MARK NAME / SECTION#)												
FRYER HOOD SECTION 1 - (LENGTH 83.0 IN.) - LOW PROXIMITY HOOD												
EQUIPMENT SCHEDULE												
Belt Drive Upblast Centrifugal Roof Exhaust Fan					MARK: PRV-3							
Qty	Accurex Model	Volume (CFM)	SP (in wg)	FRPM	Operating Power (Hp)	Weight (Lb.)	Size (hp)	VICIP	End. Motor RPM	Windings	FLA	
1	XRUB-140-7	1500	1	1377	0.5	160	0.75	208/60/3	OP	1725	1	3.9
OPTIONS AND ACCESSORIES												
UL/UL 762 Listed - "Power Ventilators for Rest. Exh. Appliances" Switch, NEMA-1, Toggle, Shipped with unit Larger curb cap size - 26" square Roof curb-Galv. GPF-26-G28, Undersized 1.5" total Hinged Base (Attached) Curb Seal (Attached) Clean-out Port Grease Trap with Drain Connection (PN 475538) Heat Baffle (Attached)												

NEW CULVER'S RESTAURANT
490 N. RANDALL RD
 Batavia, IL 60510
 County of KANE

Culver's
 Culver Franchising System, Inc.
 1240 Water Street
 Prairie du Sac, WI 53578
 608-643-7980

OWNER:
MISUKA BURGER, LLC
 9455 Skokie Boulevard
 Skokie, IL 60077
 Michael Smith
 312-287-2705

ARCHITECTS:
OLLMANN ERNEST MARTIN ARCHITECTS
 200 South State Street
 Belvidere Illinois 61008
 815-544-7190 Phone

© OEMA
 All rights reserved; any copying, transmission or disclosure subject to OEMA written approval.

FRYER HOOD/EXHAUST SCHEDULE & DETAILS

Date: 4-04-2022
 Revision: _____

2021-141
M203

CONSTRUCTION SET 8-26-2022

REV	DESCRIPTION	DATE

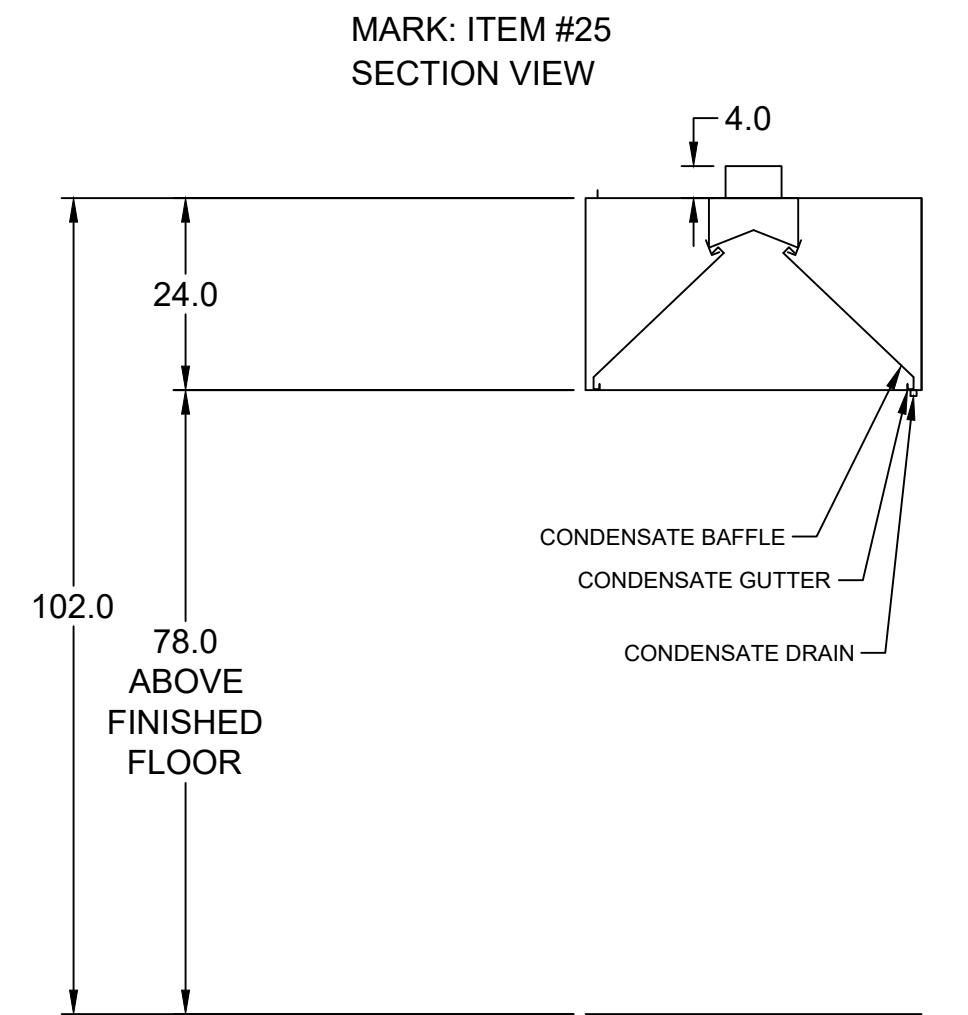
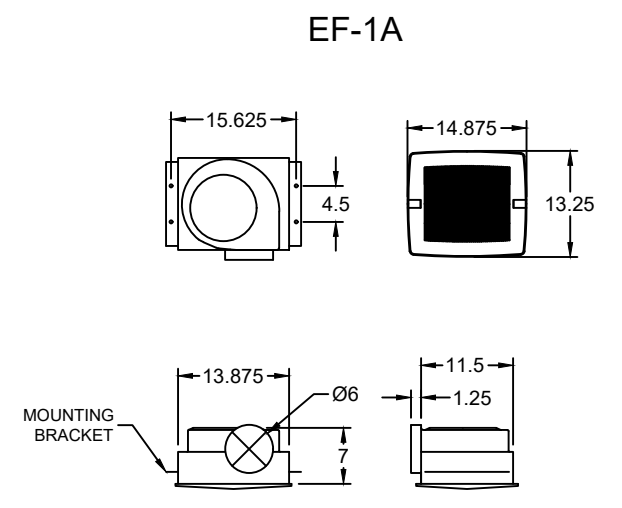
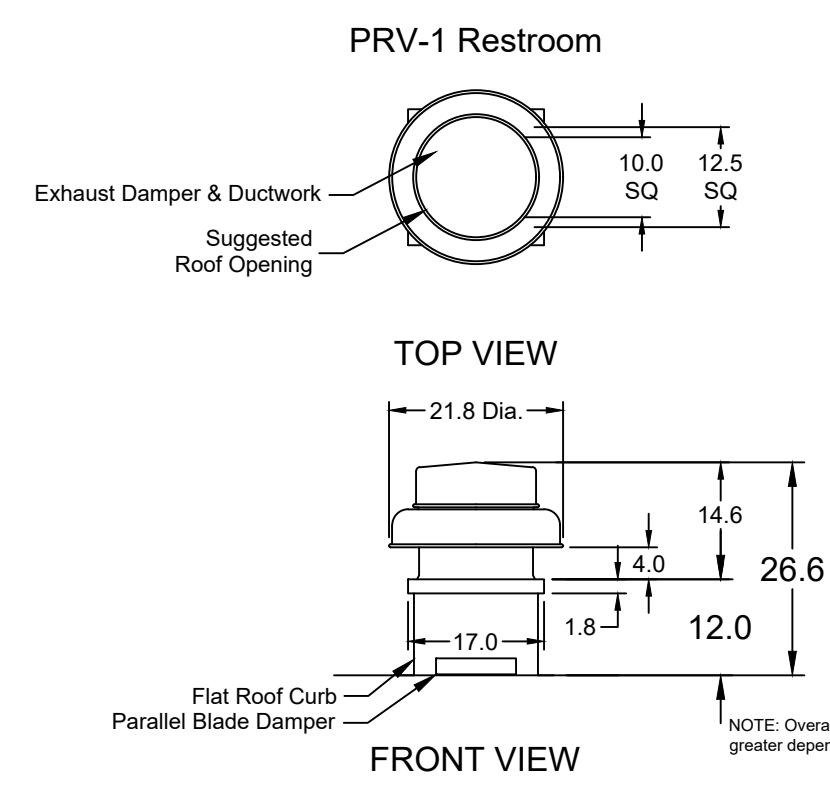
ACCUREX

CULVER'S MASTER TEMPLATE

SCALE: 1/24

DATE: 4-04-2022

NO. C28805B



EQUIPMENT SCHEDULE			
ELECTRICAL CONTROL BOX			
DESCRIPTION / ACCUREX MODEL	EXHAUST FAN QTY	SUPPLY FAN QTY	MARK: KXC
MOUNTING LOCATION (CONTROL PANEL / SWITCHES)	2	0	POWER FREQUENCY
KITCHEN FAN CONTROL CENTER / XKC SHIP LOOSE / SHIP LOOSE FOR REMOTE MOUNTING			
CONTROL PANEL ENCLOSURE - 16 GA 304 STAINLESS STEEL ENCLOSURE (NEMA-1) - DIMENSIONS 18 X 20 X 6			
WIRING DIAGRAM # T100-2 - 20 STARTERS PROVIDED IN CONTROL PANEL - QTY 2			
USER INTERFACE CONTROL - QTY 1			
INTEGRATED EXHAUST TEMPERATURE INTERLOCK SYSTEM			
-FACTORY MOUNTED EXHAUST TEMPERATURE SENSORS - QTY 2			
-COMPLIES WITH INTERNATIONAL MECHANICAL CODE 2006 SECTION 507.2.1.1			
TURN ON EXHAUST IN FIRE			
THERMAL OVERLOADS IN CABINET			
SPECIAL DESIGN REQUESTS			
SDR #K0800240 - USE KIT #E52883, WIRING DIAG. #Z290338			
TYPE 2 KITCHEN HOOD			
HOOD NO.	ACCUREX MODEL	SECTION LENGTH	MARK: ITEM #25
0	CONDENSATE HOOD - DOUBLE BAFFLE	42.0 IN.	HOOD DIMENSIONS: WIDTH 42 IN, HEIGHT 24 IN, GREASE CUP OR DRAIN RIGHT, HOOD TEMP RATING NA, TOTAL WEIGHT 224.0 LBS., SECTION LOCATION NA
EXHAUST PLENUM COLLARS			
HOOD SECTION #	DISTANCE TO END (IN.)	WIDTH (IN.)	LENGTH (IN.)
1/1	21	7	7
TOTAL EXHAUST CFM - SECTION 1			
350.0 = 100.0 CFM / FT			
OPTIONS AND ACCESSORIES			
304 STAINLESS STEEL 100% CONSTRUCTION			
FACTORY MOUNTED EXHAUST COLLAR(S)			

EQUIPMENT SCHEDULE												
Direct Drive Centrifugal Roof Exhaust Fan												
Qty	Accurex Model	Volume (CFM)	SP (in wg)	FRPM	Operating Power (hp)	Weight (lb.)	Size (hp)	V/C/P	Enc.	Motor RPM	Windings	FLA
1	XRED-090-VG	375	0.5	1465	0.060	30	0.1	115/60/1	OP	1725	1	NA
OPTIONS AND ACCESSORIES												
UL/cUL 705 Listed - "Power Ventilators"												
Switch, NEMA-1, Toggle, Shipped with unit												
Curb Seal (Attached)												
Damper, WD-100-PB-10X10, Gravity Operated (Loose)												
Vari-Green electronically commutated motor, speed dial adjustment on motor												
Roof Curb-Galv., GPI-17-10-G12, Undersized 1.5" total												

EQUIPMENT SCHEDULE												
Direct Drive Centrifugal Roof Exhaust Fan												
Qty	Accurex Model	Volume (CFM)	SP (in wg)	FRPM	Operating Power (hp)	Weight (lb.)	Size (hp)	V/C/P	Enc.	Motor RPM	Windings	FLA
0	XRED-095-VG	350	0.6	1486	0.09	33	0.167	115/60/1	OP	1725	1	4.4
OPTIONS AND ACCESSORIES												
UL/cUL 705 Listed - "Power Ventilators"												
Switch, NEMA-1, Toggle, Shipped with unit												
Curb Seal (Attached)												
Damper, WD-100-PB-10X10, Gravity Operated (Loose)												
Vari-Green electronically commutated motor, speed dial adjustment on motor												
Roof Curb-Galv., GPI-17-10-G12, Undersized 1.5" total												

EQUIPMENT SCHEDULE												
Ceiling Exhaust Fan												
Qty	Accurex Model	Volume (CFM)	SP (in wg)	FRPM	Operating Power (hp)	Weight (lb.)	Size (hp)	V/C/P	Enc.	Motor RPM	Windings	FLA
2	XCR-B80	75	0.125	855	0.01	10	0.0	115/60/1	OP	900	1	NA
OPTIONS AND ACCESSORIES												
UL/cUL 705 Listed - Electric fan												
Solid State Speed Control, 0 amp, mounted and wired												
Round Hooded Wall cap, (PN: WC-6) Mounted and Wired												
Designer Grille												
Round duct connection												
Polypropylene Wheel Material												
Energy Star Rated												



MARK: CONTROLS

CAUTION
 UNIT SHALL BE GROUNDED IN ACCORDANCE WITH N.E.C. POWER MUST BE OFF WHILE SERVICING.

THESE DRAWINGS SHALL NOT BE REMOVED FROM THIS EQUIPMENT. USE COPPER CONDUCTORS RATED TO 90°C UNLESS SPECIFIED. TORQUE CONTROL & GROUND BLOCKS TO 8 LBS. IN. TORQUE. PULGS/SCREWS TO COMPONENT RATINGS LISTED. FIELD CONTROL WIRING RESISTANCE SHOULD NOT EXCEED 0.75 OHM. SEE IOM FOR ADDITIONAL INFORMATION, OR CALL ACCUREX AT 1-800-371-6858. PRG VERSION: V2.00

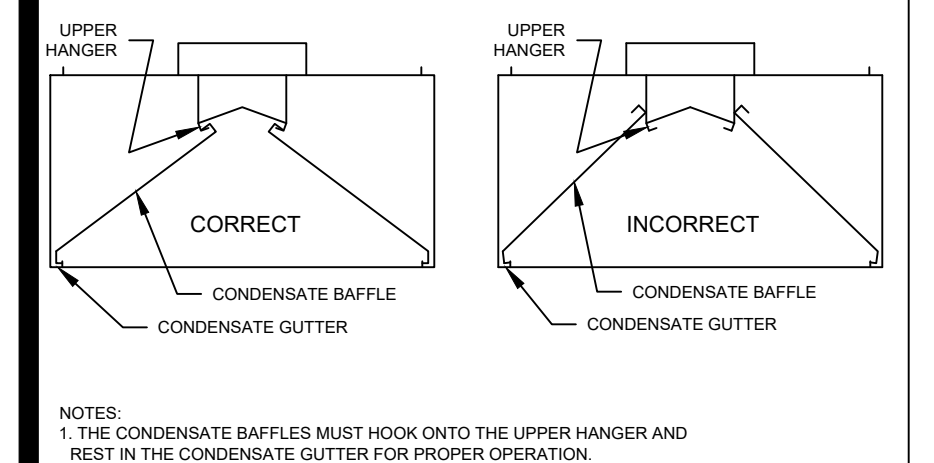
WIRING DIAGRAM CODE:
JOB NAME: CULVERS-METRO L NEW CONTROLS

MODEL: XKC-CV-S-21-2-1-0
 SERIAL NUMBER:

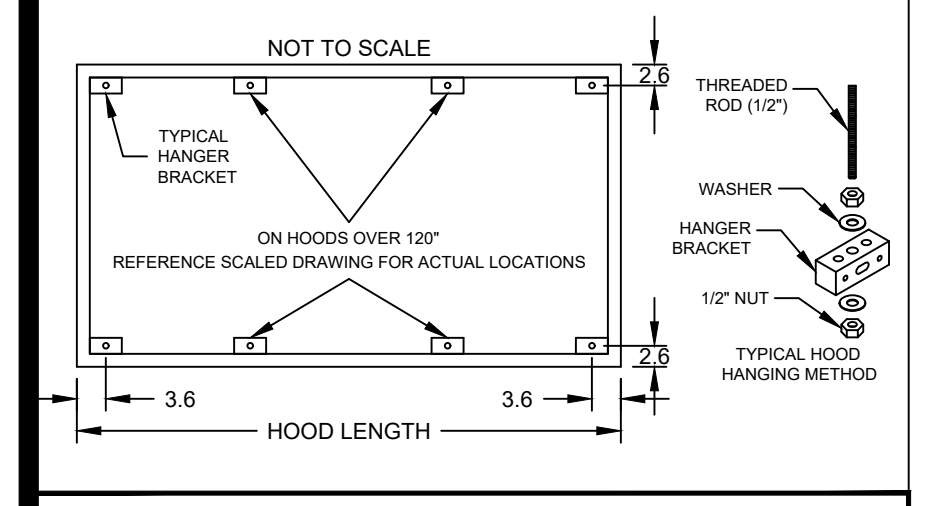
COMMERCIAL APPLIANCE OUTLET CENTER
 ELECTRICAL RATINGS: 120V, 1PHASE, 60HZ, 15A
 BASE FILE #E200616, ML FILE #E313951

FIELD WIRED
 FACTORY SUPPLIED AND WIRED

CONDENSATE HOOD BAFFLE INSTALLATION DETAIL



HOOD HANGER BRACKET DETAIL



GENERAL DRAWING NOTES

Verify building entry conditions or limitations for equipment access to space.
 Verify type and height of finished ceiling and if hood(s) may extend above finished ceiling (if required).
 Seismic installation and bracing of equipment is by others.
 Greenheck will not accept liability for problems that result from sub-standard installation, including field electrical wiring that deviates from supplied diagrams, job-site conditions (ductwork, fuel types and structural conditions) that GFC has not been notified of at the time of ordering, or use of this equipment other than that for which it is designed.
 It is the responsibility of the purchaser to hire qualified personnel for installation and start-up of all equipment. Installation and start-up information is shipped with all equipment via the Installation, Operation and Maintenance Manual (IOM), also included as a troubleshooting guide. Have all start-up info available prior to any warranty claims and/or factory technical support.

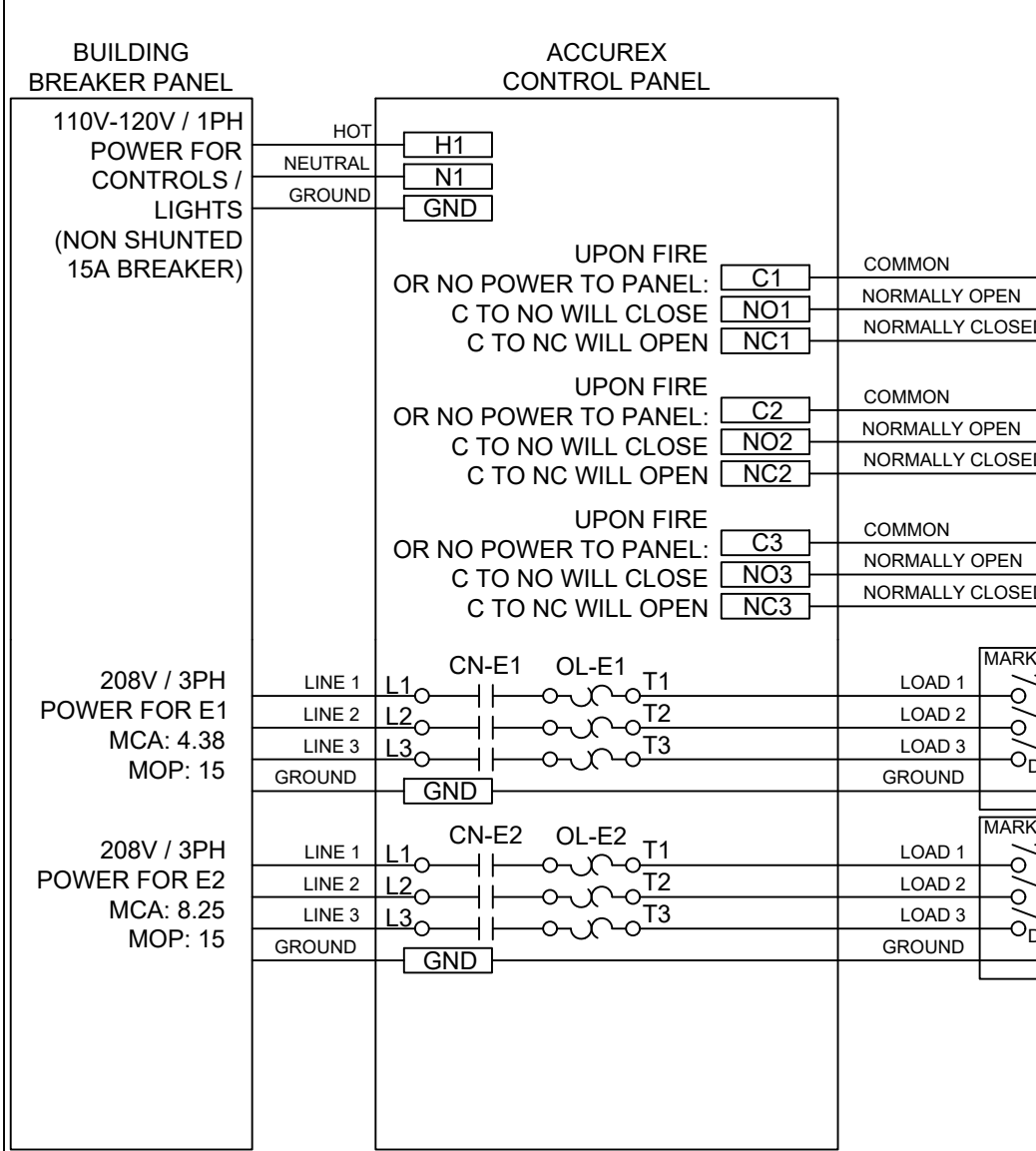
VENTILATION SYSTEM NOTES

Greenheck ventilators are designed in compliance with all national codes: NFPA # 96, national electric code, BOCA, uniform mechanical code, international mechanical code, and southern building conference. See national evaluation report #436 for allowable values, and/or conditions of use concerning material presented in this document. Local codes may vary. It is the responsibility of the purchaser to submit drawings to local authorities.
 Exhaust and supply air volumes are to be maintained within -5% to +10% tolerance of values indicated. Static pressure(s) indicated are for the ventilator at the duct connection(s) only.
 The grease filter face velocities are based on the filter manufacturers recommendations for maximum grease extraction. Inlet opening air velocities for waterwash, dry cartridge and high velocity cartridge filters manufactured by Greenheck are designed to deliver maximum grease extraction.
 Hoods installation (by others unless otherwise noted) shall be in accordance with NFPA # 96 and applicable building codes.

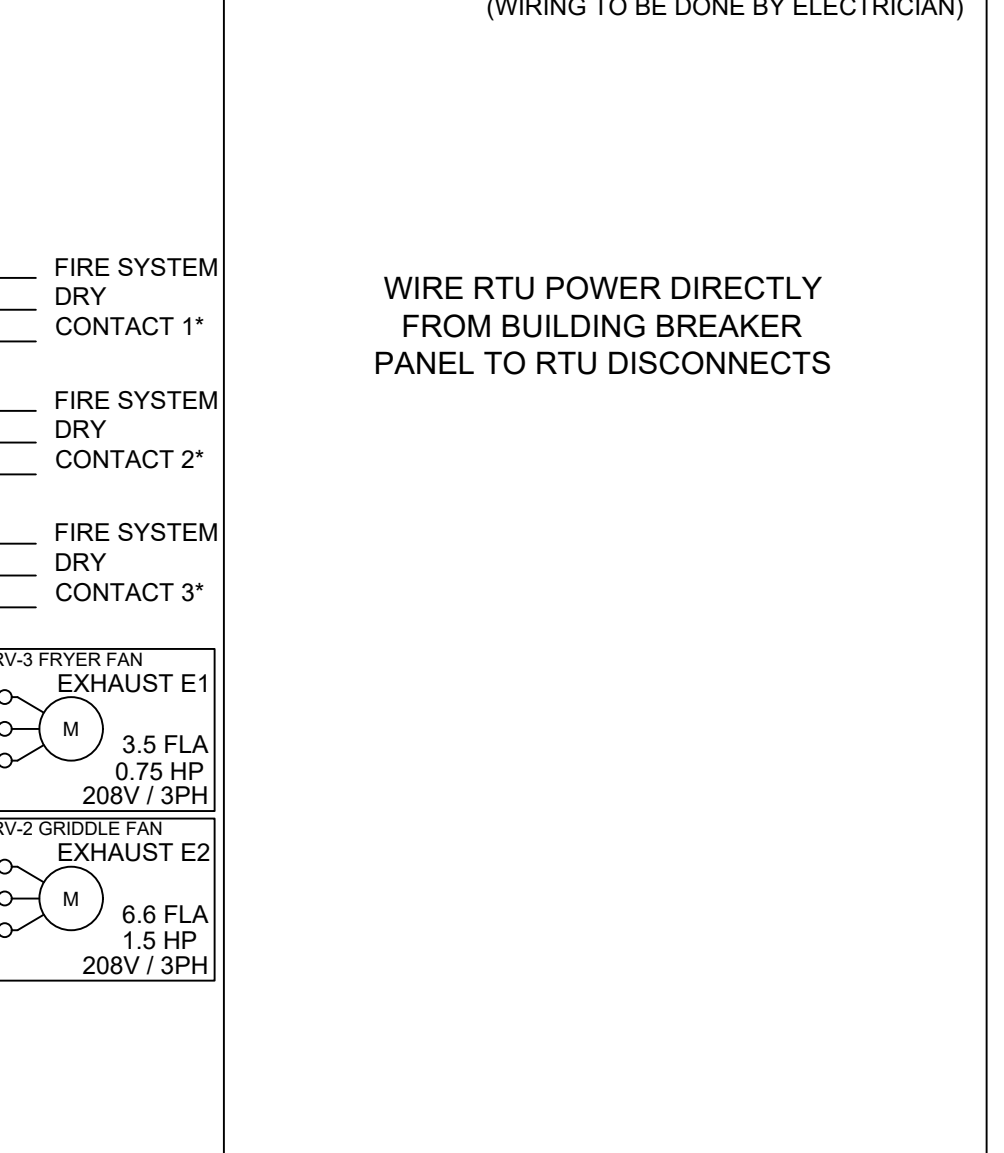
PROPRIETARY INFORMATION NOTICE

This document is and contains confidential trade secret information of the company and remains property of the company and is to be returned upon request. Neither it nor information is contained may be reproduced or disclosed to persons not having a need-to-know consistent with the purpose of the loan document without written permission.

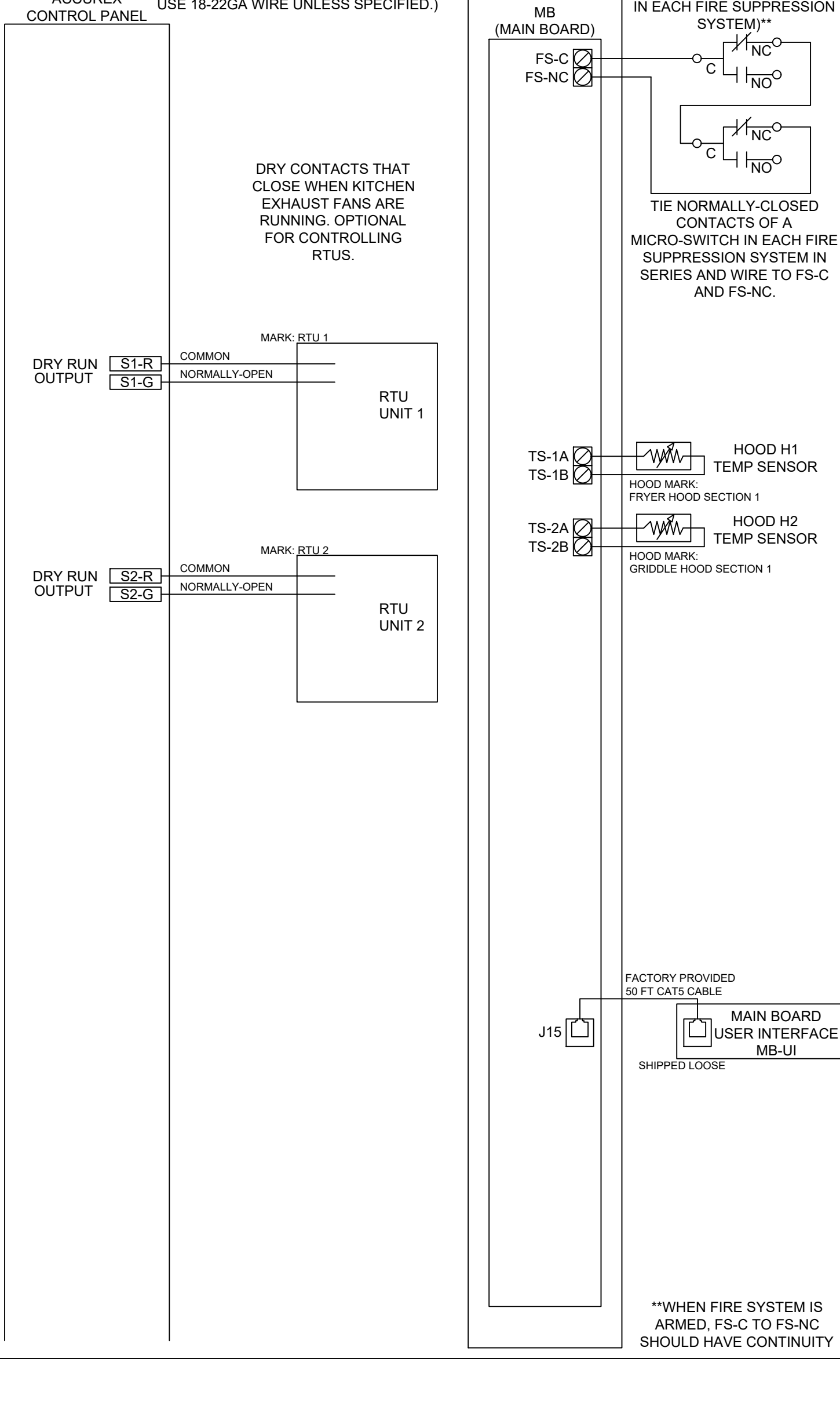
POWER WIRING FOR KITCHEN CONTROLS (WIRING TO BE DONE BY ELECTRICIAN)



POWER WIRING FROM BREAKER PANEL DIRECT TO FANS (WIRING TO BE DONE BY ELECTRICIAN)



CONTROL WIRING FOR KITCHEN CONTROLS (WIRING TO BE DONE BY ELECTRICIAN, IF NO CONTROLS CONTRACTOR, USE 18-22GA WIRE UNLESS SPECIFIED.)



FOR TECHNICAL SUPPORT ON ACCUREX CONTROLS PLEASE CALL ACCUREX TECHNICAL SUPPORT: 1-800-371-6858

SECONDARY CONTACTS ARE: AARON VAN KREY 715.841.8521 TYLER SCHILLING 715.841.8749

Thank you for your interest in Accurex

SUBMITTAL
 Please return one approved print to your Greenheck Representative including signature, date, and answers to all submittal "verify" notes and questions. Fabrication will not begin until after approved drawings are received.

APPROVED AS SUBMITTED
 APPROVED AS NOTED
 REJECTED - REVISE AND RESUBMIT

SIGNATURE: _____ DATE: _____

REV DESCRIPTION DATE

ACCUREX
 CULVER'S MASTER TEMPLATE
 SCALE: 1/24
 C28805C

© 2022

NEW CULVER'S RESTAURANT
 490 N. RANDALL RD
 Batavia, IL 60510
 County of KANE

OWNER: MISUKA BURGER, LLC
 9455 Skokie Boulevard
 Skokie, IL 60077
 Michael Smith
 312-287-2705

OLLMANN ERNEST MARTIN ARCHITECTS
 200 South State Street
 Belvidere Illinois 61008
 815-544-7790 Phone

© OEMA
 All rights reserved; any copying, transmittal or disclosure subject to OEMA written approval.

FAN SCHEDULE & DETAILS

Revision: _____
 Date: 4-04-2022

CONSTRUCTION SET 8-26-2022

2021-141
 M204