



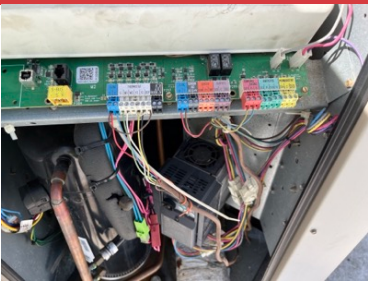
ROOFTOP



ROOFTOP



RTU 1 - KITCHEN



RTU 1 CONTROLS WIRING

OCP jumper installed. Y1 & Y2 jumpered.



RTU 1 SUPPLY DROP



RTU 1 HEAT EXCHANGER TUBES RUSTY



RTU 1 HEAT EXCHANGER TUBES



RTU 1 RETURN

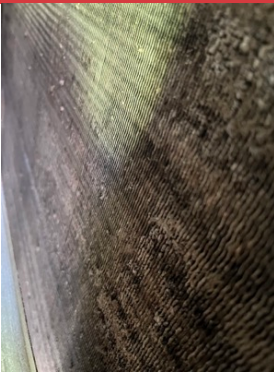


RTU 1 BLOWER



RTU 1 DX COIL DIRTY

Blower side



RTU 1 DX COIL

Filter side



RTU 1 FINAL FILTERS



RTU 1 DOOR INTERFERENCE

Blower compartment cannot fully be opened due to kitchen exhaust fan location.



RTU 1 ECONOMIZER NOT FUNCTIONAL

Motor not moving, arm damaged where it attaches to damper.



RTU 1 DAMPER POSITION

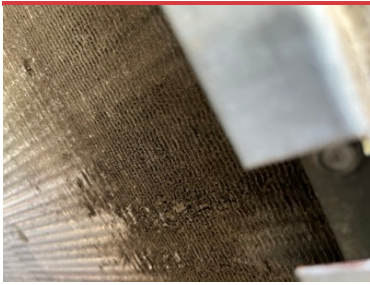
Set manually to 3/4" by NTAB. Damper was previously closed.



RTU 2 - DINING



RTU 2 FINAL FILTERS



RTU 2 DX COIL

Filter side



RTU 2 DX COIL

Blower side



RTU 2 BLOWER



RTU 2 RETURN



RTU 2 HEAT EXCHANGER TUBES



RTU 2 CURB ADAPTER (DISCHARGE SIDE)

Typical of both RTUs.



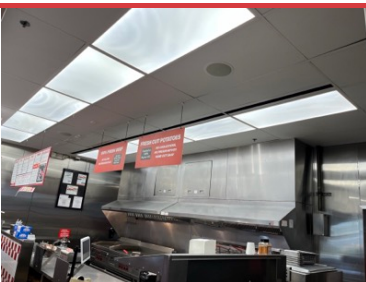
RTU 2 CONTROLS WIRING

OCP jumper installed.



SF 1

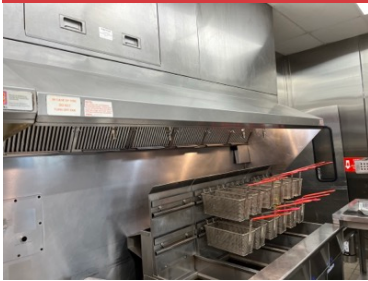
Hood Make Up Air



KITCHEN HOODS



HOOD LEFT



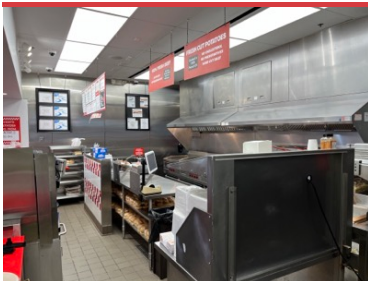
HOOD RIGHT



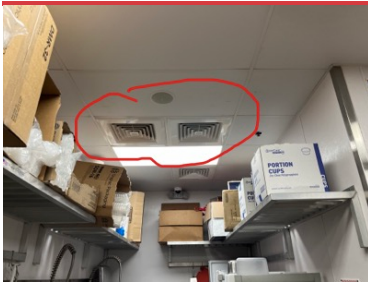
DINING AREA



RESTROOM CORRIDOR

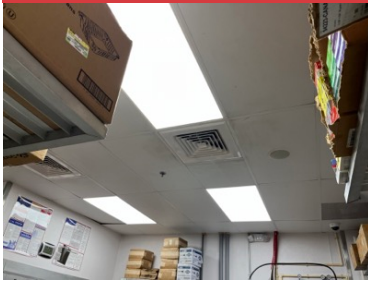


KITCHEN



ATYPICAL RETURN GRILLS

These grills are typically used for supply air

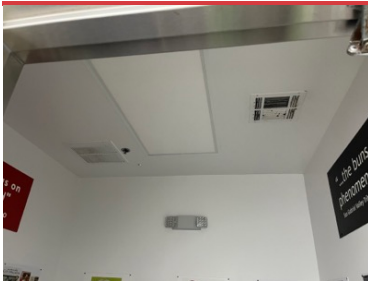


BOH DIFFUSERS

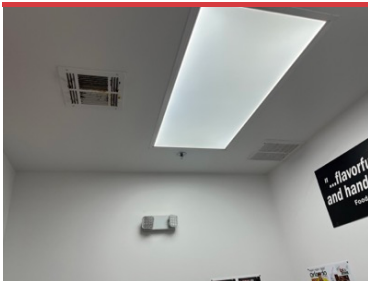


THERMOSTATS

NTAB changed fan function to “Fan ON” to maintain building pressure. Previously set to “Auto”



WOMEN'S RR



MEN'S RR