

**Report By:**

National TAB  
1329 E. KEMPER ROAD  
SUITE 4210  
CINCINNATI, OH 45246



**Report: TAB**

**Function: Test, Adjust, & Balance**

**Date: 10/29/2025**

**Completed By: National TAB**

# **PROJECT**

**10-27-25 SWEETGREEN BURLINGAME, CA  
(TAB, IAQ)**

235 Lorton Avenue

BURLINGAME, CA 94010

**Client**

Jason Mechanical, Inc.

# National TAB

Project: 10-27-25 SWEETGREEN BURLINGAME, CA (TAB, IAQ)

## Table Of Contents

Section	Page #
Summary	3
BALANCE SCHEDULE	4
Checklist Data	5
AHU/RTU	19
FAN - Exhaust	23
FAN - Supply	25
GRD LAYOUT	26



# National TAB

Project: 10-27-25 SWEETGREEN BURLINGAME, CA (TAB,  
IAQ)  
Function: Test, Adjust, & Balance

## Project Summary

### Project Summary

The summary below provides a quick understanding of our scope of work and general testing procedures. Enclosed in the report is further detail about your building performance including recommendations, asset data, and pictures. Our focus is to work with the trades to remedy any issues or deficiencies during the actual field balancing and not after the balancing has occurred to achieve a positive environment and outcome. The level of success is determined by the availability of the trades, possible parts needed, or time constraints.

### AHU's w/ Diffusers

Each of the AHU's were measured at their terminal devices or via traverse to establish a total flow for that unit. Each AHU was adjusted to within tolerance of the engineer's design flow. Each outlet was then adjusted to within tolerance of the design flow. If provided with outside air, the flow was measured via traverse. The outside air damper was adjusted until the airflow was within the design requirements. Any equipment that fell outside of that tolerance is noted throughout the report.

### General Exhaust Fans w/ Grilles

The general exhaust fans were measured by reading each air device with a flow hood. The total airflow for each fan is equivalent to the sum of these readings. Fan speed was then adjusted so that the airflow was within tolerance of design. Each terminal device was balanced to within tolerance of the design volume using the installed volume dampers. Any equipment that fell outside of this tolerance is noted throughout the report.

### AIR BALANCE SCHEDULE

UNIT	AREA SERVED	HVAC SUPPLY		HVAC RETURN		HVAC OUTDOOR		OA %		HOOD MAKE-UP		HOOD EXHAUST		GENERAL EXH.	
		DESIGN	ACTUAL	DESIGN	ACTUAL	DESIGN	ACTUAL	DESIGN	ACTUAL	DESIGN	ACTUAL	DESIGN	ACTUAL	DESIGN	ACTUAL
AHU-1	KITCHEN	2540	2612	2140	2211	400	401	15.7%	15.4%						
AHU-2	DINING	2000	2042	1500	1539	500	503	25.0%	24.6%						
EF-1	KITCHEN/RR											550	578		
<b>TOTALS</b>		4540	4654	3640	3750	900	904			0	0	550	578	0	0

#### NET BUILDING AIRFLOW CALCULATION

TOTALS	DESIGN	ACTUAL
TOTAL OA	900	904
TOTAL EXHAUST	550	578
<b>NET AIRFLOW</b>	<b>350</b>	<b>326</b>

DOOR TESTED	BUILDING PRESSURE MEASUREMENTS (IN. H2O)
FRONT	0.0028
SIDE	
REAR	0.0031
<b>AVERAGE</b>	<b>0.003</b>

#### FINAL CHECKS

- ACTUAL NET AIRFLOW COINCIDES WITH DESIGN: ✓

---

- MEASURED PRESSURES COINCIDES WITH ACTUAL NET AIRFLOW: ✓

---

- PRESSURE FALLS WITHIN IMC TOLERANCE OF +/-0.02" W.C. ✓

NOTES:

## CheckList List

- STEP 1: INITIAL WALKTHROUGH
- STEP 2: UNIT DATA AND EVAL
- STEP 3: TEST, ADJUST AND BALANCE
- STEP 4: FINAL TESTS
- STEP 4B: HOOD AND OVEN EVALUATION



10-27-25 SWEETGREEN BURLINGAME, CA (TAB, IAQ)

CheckList Information

**Name :** STEP 1: INITIAL WALKTHROUGH **Status :** Completed

**Assigned Organization :** National TAB **Asset :**

**Requesting Organization :** National TAB

**Created Date :** 09/19/2025 - Tyce Fox - National TAB

**Completed Date :** 10/29/2025 - Zack Eismin - National TAB

CheckList Item Details

INITIAL SITE WALKTHROUGH

Review Plan Review Checklist, has it been signed off and meets our standards to start balancing? If not contact processor to ensure job is ready.

**Comment:**

YES

All diffusers and grilles are installed and match design?

**Comment:**

YES

All hood filters installed and accounted for?

**Comment:**

N/A

Hoods are wired and have power?

**Comment:**

N/A

Hood is free of alarms?

**Comment:**

N/A

Thermostats have power?

**Comment:**

YES

---

**Have trades/general contractor been notified about any issues and are they created on FaciliBuild?**

**Comment:**

YES



10-27-25 SWEETGREEN BURLINGAME, CA (TAB, IAQ)

CheckList Information

**Name :** STEP 2: UNIT DATA AND EVAL **Status :** Completed

**Assigned Organization :** National TAB **Asset :**

**Requesting Organization :** National TAB

**Created Date :** 09/19/2025 - Tyce Fox - National TAB

**Completed Date :** 10/29/2025 - Zack Eismin - National TAB

CheckList Item Details

UNIT DATA AND EVALUATION WHILE GATHERING UNIT DATA CHECK THE FOLLOWING:

RTU's/AHU's

Economizers are assembled and functional?

Comment:

N/A

DCV Max damper opening position is set to minimum?

Comment:

N/A

Free cooling enthalpy set point set for lowest setting (Typically "D")

Comment:

N/A

Motors are all operating below the FLA rating?

Comment:

YES

Are belts tight?

Comment:

N/A

If direct drive unit is the speed controller working.

Comment:

YES

Is gas piping installed and valves turned on?

Comment:

N/A

Unit free of noticeable noise and vibrat

Comment:

YES

EF's

Rotation is correct?

Comment:

YES

Belts are tight?

Comment:

N/A

Grease cup installed on hood fan?

Comment:

N/A

Hinge kit installed installed on hood fan?

Comment:

N/A

Lean fan back. Is grease duct installation adequate and is duct ran all the way to the base of the fan?

Comment:

N/A

Flex conduit is long enough so that fan can be completely tilted back?

Comment:

N/A

There is no major leakage around base of fan?

**Comment:**

N/A

---

**Is the motor operating below the motor FLA rating?**

**Comment:**

YES

---

**For restroom fan(s) is the back draft damper installed and can it fully open?**

**Comment:**

YES

---

**Unit free of noticeable noise and vibration?**

**Comment:**

YES

---

**MUA**

---

**Rotation is correct?**

**Comment:**

YES

---

**Gas piping is installed and valves are in on position?**

**Comment:**

N/A

---

**Heater tested and is functional?**

**Comment:**

N/A

---

**Internal motorized damper is fully opening?**

**Comment:**

---

**Motor is operating below the FLA rating?**

**Comment:**

---

**Unit free of noticeable noise and vibration?**

**Comment:**

YES

**HOODS**

**Kitchen equipment installed in proper places?**

**Comment:**

**Can kitchen equipment be turned on for final smoke test?**

**Comment:**

**DOCUMENTATION**

**Have trades/general contractor been notified about any issues and are they created on FaciliBuild?**

**Comment:**

**AIR PURIFICATION INSPECTION**

Yes

**Comment:**

**PHI Air purifiers are installed?**

**Comment:**

YES

**Are they installed after the evaporator coil or in the supply duct?**

**Comment:**

SUPPLY DUCT

**Are they powered?**

**Comment:**

YES

**If PKG installed inside of the blower compartment, is the wiring exposed to UV light protected with split loom or conduit?**

**Comment:**

N/A

**If Reme Halo, is it installed so that the air flow arrow is pointing correct direction?**

**Comment:**

YES

**Is a UV warning sticker installed?**

**Comment:**

YES

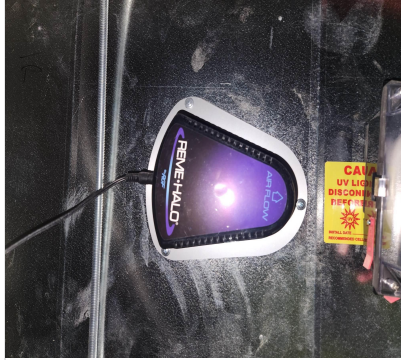
---

**Take picture of each air purifier and include in the report**

---

**Comment:**

YES



10/29/2025



10/29/2025



10-27-25 SWEETGREEN BURLINGAME, CA (TAB, IAQ)

**CheckList Information**

**Name :** STEP 3: TEST, ADJUST AND BALANCE **Status :** Completed

**Assigned Organization :** National TAB **Asset :**

**Requesting Organization :** National TAB

**Created Date :** 09/19/2025 - Tyce Fox - National TAB

**Completed Date :** 10/29/2025 - Zack Eismin - National TAB

**CheckList Item Details**

TEST, ADJUST, AND BALANCE ALL EQUIPMENT:

DURING TESTING MAKE NOTE OF THE FOLLOWING:

Is space free of drafting?

Comment:

YES

Is space comfortable in all areas?

Comment:

YES

Is the space free of ventilation noise?

Comment:

YES

If deviations from design were necessary to resolve 1-3 what were they? Otherwise put "NA".

Comment:

N/A



10-27-25 SWEETGREEN BURLINGAME, CA (TAB, IAQ)

**CheckList Information**

**Name :** STEP 4: FINAL TESTS **Status :** Completed

**Assigned Organization :** National TAB **Asset :**

**Requesting Organization :** National TAB

**Created Date :** 09/19/2025 - Tyce Fox - National TAB

**Completed Date :** 10/29/2025 - Zack Eismin - National TAB

**CheckList Item Details**

**FINAL TESTS**

**HOOD CAPTURE TEST**

**List equipment turned on for testing**

**Comment:**

OVEN

**List smoke candle type used**

**Comment:**

45 SECONDS

**Smoke test capture - Perimeter of hood**

**Comment:**

N/A

**Smoke test capture - Top of cooking surface**

**Comment:**

100%

**WITNESS**

**Date test was completed**

Yes

**Comment:**

10/29/2025

---

**TAB tech name / Firm**

Yes

**Comment:**

ZACK / NATIONAL TAB

---

**Site super name / Firm**

Yes

**Comment:**

DAN / BLACK CREEK BUILDERS

---

**Owner representative name / Firm (if Applicable)**

N/A

**Comment:**

---

**Building pressure at front & back doors (All Systems On)**

Yes

**Comment:**

0.003"

---

**ADDITIONAL**

---

**Do actual net building airflow, design net building airflow, and pressure coincide? If not why? (All three should either be positive or negative)**

**Comment:**

YES

---

**Thermostats are programmed?**

**Comment:**

YES

---



10-27-25 SWEETGREEN BURLINGAME, CA (TAB, IAQ)

**CheckList Information**

**Name :** STEP 4B: HOOD AND OVEN EVALUATION      **Status :** Completed

**Assigned Organization :** National TAB      **Asset :**

**Requesting Organization :** National TAB

**Created Date :** 09/19/2025 - Tyce Fox - National TAB

**Completed Date :** 10/29/2025 - Zack Eismin - National TAB

**CheckList Item Details**

**HOOD AND OVEN EVALUATION**

Is the oven covered by a hood?

**Comment:**

NO

What is the hood overhang over the front of the hood?

**Comment:**

N/A

What is hood overhang over the left and right sides of the oven?

**Comment:**

N/A

If vertical end panels are specified, are they installed?

**Comment:**

N/A

**SMOKE TEST AT HOOD**

**Comment:**

N/A

If oven is capable of turning on, it is required to be turned on for smoke test. Was oven on for smoke test?

**Comment:**

YES

---

**Smoke test the oven at the flue on the top of the hood - Capture %?**

**Comment:**

100%

---

**Smoke test the oven at perimeter of the oven - capture %?**

**Comment:**

100%

---

**Smoke test the oven at the perimeter of the hood - capture %?**

**Comment:**

N/A

---

**IF NO HOOD IS INSTALLED ABOVE THE OVEN**

---

**If no hood is installed above the oven, and it is only a grille, smoke test at the top of the oven at the flue and note the capture %. If smoke capture is very poor, hold the candle up by the grille after a few seconds so that the smoke alarms don't get set off.**

**Comment:**

100%

---

**SMOKE TEST AT OVEN**

---

**Confirm that the internal fan turns on as you open the oven door?**

**Comment:**

YES

---

**Smoke test at the oven doors as you are opening the door - capture %?**

**Comment:**

100%

---

**Smoke test at the oven doors when the doors are shut - capture %?**

**Comment:**

100%

---

**EXHAUST DISCHARGE AND OA INTAKES**

---

**Identify where the exhaust air is discharged and take pictures**

---

**Comment:**

NA

---

**Are there are any outside air intakes nearby that would be able to re-entrain the exhaust smoke? Take pictures**

**Comment:**

NA

---

**Are there any building entrances or windows near the exhaust discharge where smoke that will cause smoke to enter unwanted spaces?**

**Comment:**

# National TAB

Project: 10-27-25 SWEETGREEN BURLINGAME, CA (TAB, IAQ)



## System/Unit: AHU/RTU

Asset: AHU1

AREA: KITCHEN

Unit Data		
	Design	Actual
MFG	DAIKIN	DAIKIN
Serial Num	-	K000306
Model Num	FXMQ96MVJU	FXMQ96TAVJU
Type	AHU	AHU
Configuration	VERTICAL	HORIZONTAL
Num OA Filters 1	-	N/A
OA Filter Size 1	-	N/A
Num Final Filter 1	-	4
Final Filter Size 1	-	18X24X4
Num Final Filter 2	-	
Final Filter Size 2	-	

Motor Data		
	Design	Actual
Motor MFG	-	NL
Frame	-	NL
Horsepower	-	NL
Motor Rpm	-	NL
Phase	1	1
Rated Voltage	208	208
Rated Amperage	-	5.4

Test Data		
	Design	Actual
SF CFM	2540	2612
SF RPM	-	HIGH SPEED
RA CFM	2140	2211
OA CFM	400	401
RL Voltage	-	206
RL Amperage	-	4.8
SF Rotation	-	CCW
SF System SetPt	-	HIGH SPEED
RA Damper Position	-	100%
Min OA Damper Position	-	50%
Min OA Damper Type	-	MANUAL
OA Enthalpy Setpt	-	N/A

Performance Data		
	Design	Actual
MA Plenum SP	-	-0.35"
Fan Suction SP	-	-0.55"
Fan Discharge SP	-	0.42"
Total ESP	0.8"	0.77"
Fan Total SP	-	0.97"

General	
	Actual
Fan Rotation Correct	YES
Unit Filters Clean	YES
Condensate Drain Installed	YES

Completed By: Zack Eismin on 10/29/2025

# National TAB

Project: 10-27-25 SWEETGREEN BURLINGAME, CA (TAB, IAQ)

## AHU/RTU



### Diffuser Supply (GRD)

#### AHU1/KITCHEN

Asset									
Asset Name	Location	Type	Size	DESIGN CFM	AK	CFM(1)	CFM(2)	FINAL CFM	% to design
SGRD1	BOH	CD2	10"	300	1	439	311	311	103.7
SGRD2	BOH	CD2	10"	275	1	203	289	289	105.1
SGRD3	BOH	CD2	10"	275	1	179	271	271	98.5
SGRD4	BOH	CD2	12"	300	1	391	302	302	100.7
SGRD5	BOH	CD2	8"	150	1	159	145	145	96.7
SGRD6	BOH	CD2	8"	225	1	201	222	222	98.7
SGRD7	BOH	CD2	8"	175	1	121	171	171	97.7
SGRD8	BOH	CD1	8"	150	1	169	159	159	106.0
SGRD9	BOH	CD1	12"	465	1	689	511	511	109.9
SGRD10	BOH	CD1	8"	225	1	101	231	231	102.7
Total				2540		2652	2612	2612	102.83%

Completed By: Zack Eismin on 10/29/2025

# National TAB

Project: 10-27-25 SWEETGREEN BURLINGAME, CA (TAB, IAQ)



## System/Unit: AHU/RTU

Asset: AHU2

AREA: DINING

Unit Data		
	Design	Actual
MFG	DAIKIN	DAIKIN
Serial Num	-	K000374
Model Num	FXMQ72MVJU	FXMQ72TAVJU
Type	AHU	AHU
Configuration	VERTICAL	HORIZONTAL
Num OA Filters 1	-	N/A
OA Filter Size 1	-	N/A
Num Final Filter 1	-	4
Final Filter Size 1	-	18X24X4
Num Final Filter 2	-	
Final Filter Size 2	-	

Motor Data		
	Design	Actual
Motor MFG	-	NL
Frame	-	NL
Horsepower	-	NL
Motor Rpm	-	NL
Phase	1	1
Rated Voltage	208	208
Rated Amperage	-	5.2

Test Data		
	Design	Actual
SF CFM	2000	2042
SF RPM	-	HIGH SPEED
RA CFM	1500	1539
OA CFM	500	503
RL Voltage	-	206
RL Amperage	-	4.6
SF Rotation	-	CCW
SF System SetPt	-	HIGH SPEED
RA Damper Position	-	100%
Min OA Damper Position	-	50%
Min OA Damper Type	-	MANUAL
OA Enthalpy Setpt	-	N/A

Performance Data		
	Design	Actual
MA Plenum SP	-	-0.37"
Fan Suction SP	-	-0.61"
Fan Discharge SP	-	0.47"
Total ESP	0.8"	0.84"
Fan Total SP	-	1.08"

General	
	Actual
Fan Rotation Correct	YES
Unit Filters Clean	YES
Condensate Drain Installed	YES

Completed By: Zack Eismin on 10/28/2025

### Unit Data - PHOTO LOG



10/28/2025

# National TAB

Project: 10-27-25 SWEETGREEN BURLINGAME, CA (TAB, IAQ)

## AHU/RTU



### Diffuser Supply (GRD)

#### AHU2/DINING

Asset									
Asset Name	Location	Type	Size	DESIGN CFM	AK	CFM(1)	CFM(2)	FINAL CFM	% to design
SGRD1	DINNING	SG1	18/6	500	1	611	521	521	104.2
SGRD2	DINNING	SG1	18/6	500	1	311	503	503	100.6
SGRD3	DINNING	SG1	18/6	500	1	511	511	511	102.2
SGRD4	DINNING	SG1	18/6	500	1	631	507	507	101.4
Total				2000		2064	2042	2042	102.1%

Completed By: Zack Eismin on 10/28/2025

# National TAB

Project: 10-27-25 SWEETGREEN BURLINGAME, CA (TAB, IAQ)



## System/Unit: FAN - Exhaust

Asset: EF1

AREA:HOOD

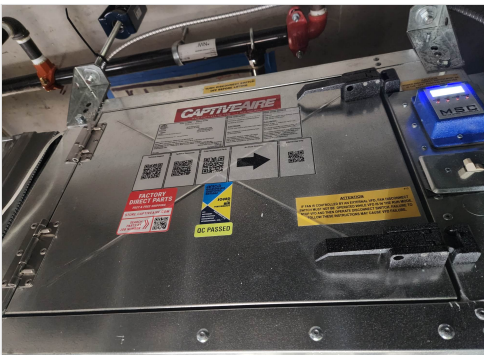
Unit Data		
	Design	Actual
MFG	CAPTIVEAIRE	CAPTIVEAIRE
Model Num	SIF11DD	SIF11DD
Serial Num	-	7285303
Type	INLINE	INLINE
Configuration	VERTICAL	VERTICAL

Motor Data		
	Design	Actual
Motor MFG	-	NL
Frame	-	NL
Horsepower	0.50	0.5
Motor Rpm	-	2400
Phase	1	1
Voltage (rated)	120	115
Amperage (rated)	-	6.3
Service Factor	-	NL

Test Data		
	Design	Actual
CFM	550	578
Fan RPM	-	1680
Fan Rotation	-	CCW
Motor RPM	-	1680
System SetPt	-	70
RL Voltage	-	115
RL Amperage	-	4.1
Total ESP	0.8"	0.75"
Fan Inlet SP	-	-0.41"
Fan Discharge SP	-	0.34"

Completed By: Zack Eismin on 10/28/2025

### Unit Data - PHOTO LOG



10/28/2025

# National TAB

Project:10-27-25 SWEETGREEN BURLINGAME, CA (TAB, IAQ)

## FAN - Exhaust



### Diffuser Ret/Exh (GRD)

#### EF1/HOOD

Asset									
Asset Name	Location	Type	Size	DESIGN CFM	AK	CFM(1)	CFM(2)	FINAL CFM	% to design
EGRD1	KITCHEN	EG	22/22	400	1	721	437	437	109.3
EGRD2	BATHROOM	EG	6"	75	1	12	70	70	93.3
EGRD3	BATHROOM	EG	6"	75	1	22	71	71	94.7
Total				550		755	578	578	105.09%

Completed By: Zack Eismin on 10/28/2025

# National TAB

Project: 10-27-25 SWEETGREEN BURLINGAME, CA (TAB, IAQ)



## System/Unit: FAN - Supply

Asset: SF1

AREA:

Unit Data		
	Design	Actual
MFG	NL	CAPTIVEAIRE
Model Num	NL	SIF11DD
Serial Num	-	7610984
Type	-	INLINE
Configuration	-	HORIZONTAL

Motor Data		
	Design	Actual
Motor MFG	-	NL
Frame	-	NL
Horsepower	0.5	0.5
Motor Rpm	-	2400
Phase	1	1
Voltage (rated)	-	115
Amperage (rated)	-	6.3
Service Factor	-	NL

Test Data		
	Design	Actual
CFM	300	309
SF RPM	-	1560
Motor RPM	-	1560
SF System SetPt	-	65%
RL Voltage	-	115
RL Amperage	-	3.8
Total ESP	-	0.77"
Fan Discharge SP	-	0.43"

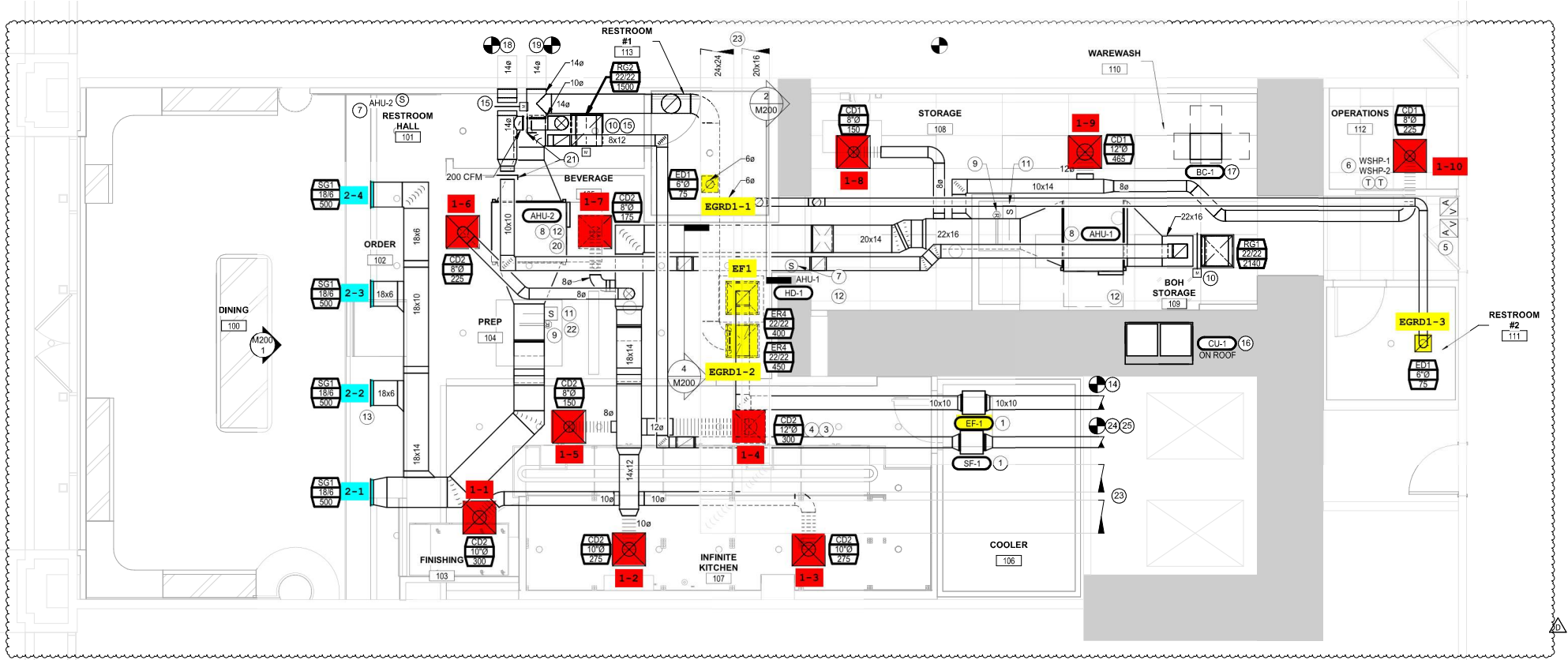
General	
	Actual
Fan Rotation Correct	YES

Completed By: Zack Eismin on 10/28/2025

### Unit Data - PHOTO LOG



10/28/2025



1 HVAC PLAN