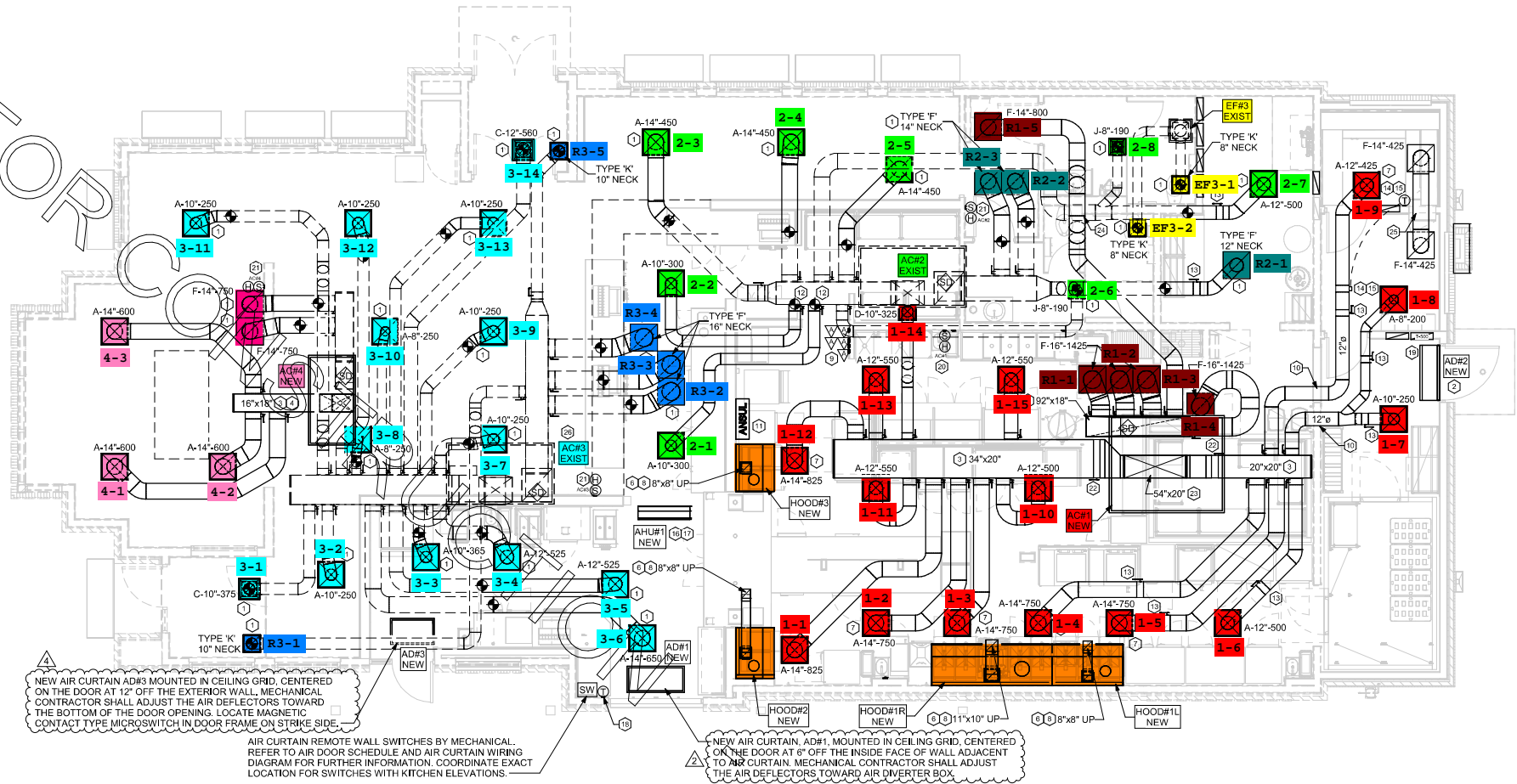


FOR



FIELD VERIFY EXISTING AIR DEVICE NECK SIZE PRIOR TO ORDERING REPLACEMENT, TYPICAL.

G.C. TO HIRE VENTILATION CLEANING CONTRACTOR CERTIFIED BY NATIONAL AIR DUCT CLEANERS ASSOCIATION (NADCA) TO CLEAN ALL EXISTING DUCTWORK THAT IS TO REMAIN.

HOLD NEW DUCT AS HIGH AS POSSIBLE DUE TO LIMITED CLEARANCE ABOVE CEILING.

NEW AIR CURTAIN AD#3 MOUNTED IN CEILING GRID, CENTERED ON THE DOOR AT 12" OFF THE EXTERIOR WALL. MECHANICAL CONTRACTOR SHALL ADJUST THE AIR DEFLECTORS TOWARD THE BOTTOM OF THE DOOR OPENING. LOCATE MAGNETIC CONTACT TYPE MICROSWITCH IN DOOR FRAME ON STRIKE SIDE.

AIR CURTAIN REMOTE WALL SWITCHES BY MECHANICAL. REFER TO AIR DOOR SCHEDULE AND AIR CURTAIN WIRING DIAGRAM FOR FURTHER INFORMATION. COORDINATE EXACT LOCATION FOR SWITCHES WITH KITCHEN ELEVATIONS.

NEW AIR CURTAIN AD#1 MOUNTED IN CEILING GRID, CENTERED ON THE DOOR AT 6" OFF THE INSIDE FACE OF WALL ADJACENT TO AIR CURTAIN. MECHANICAL CONTRACTOR SHALL ADJUST THE AIR DEFLECTORS TOWARD AIR DIVERTER BOX.

1 MECHANICAL FLOOR PLAN
1/4" = 1'-0"