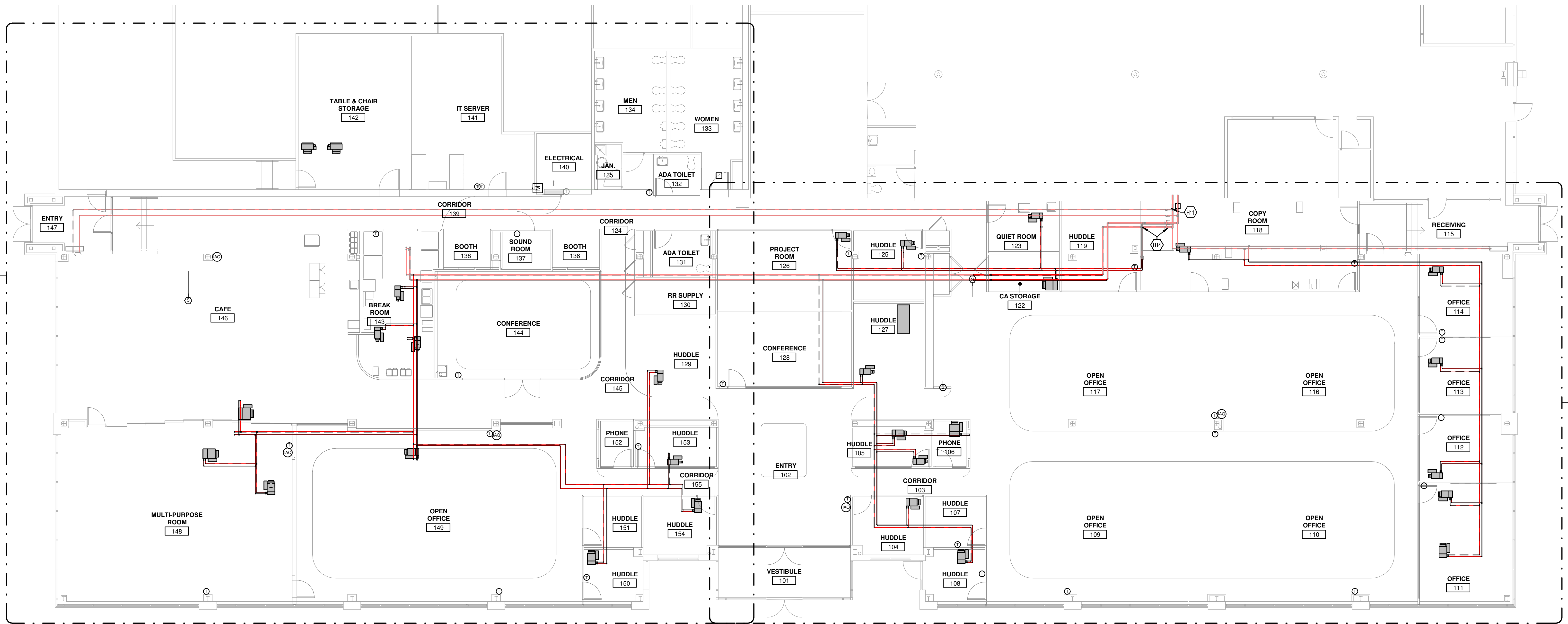
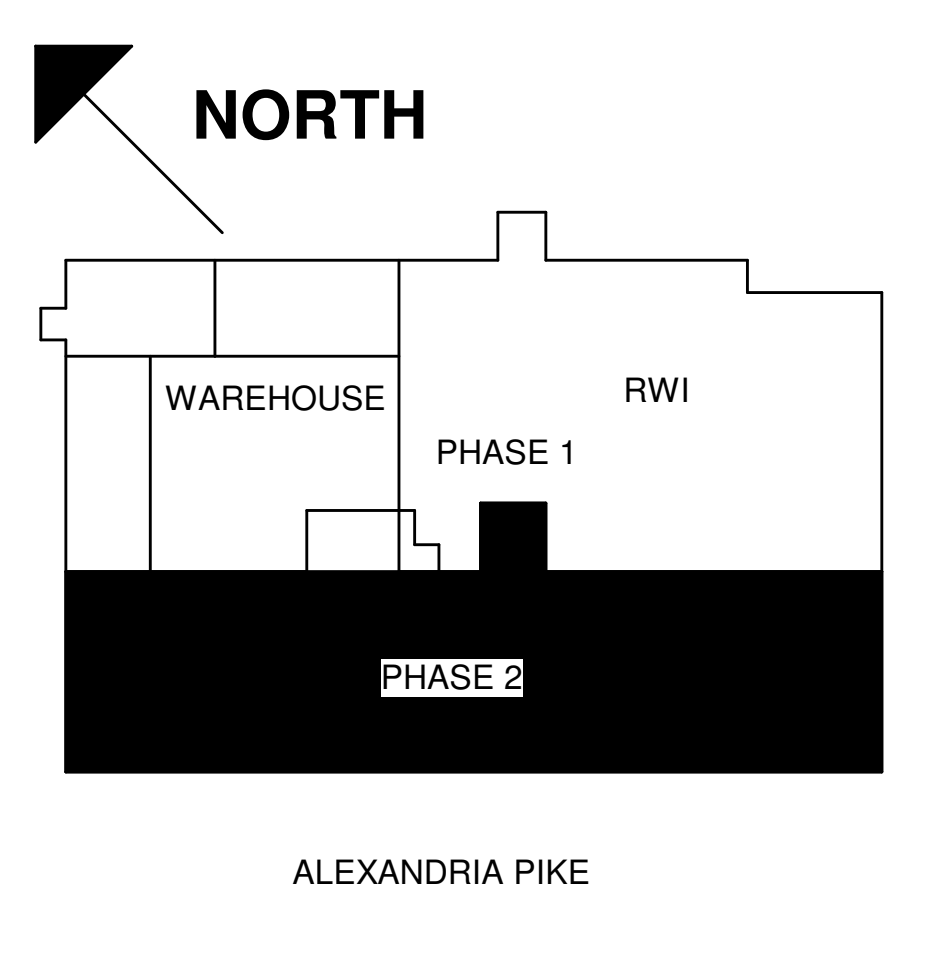


OWNERSHIP OF INSTRUMENTS OF SERVICE: All data, notes and other documents and instruments prepared by the Consultant as instruments of service shall remain the property of the Consultant. The Consultant shall retain all common law, statutory and other reserved rights, including, without limitation, the copyright therein.

10/10/2024 10:01:10 C:\Users\dpnce\Documents\Revit\2024\00-23-MEP-KLH Headquarters Renovation\_dpnce.rvt



1 MECHANICAL NEW - PIPING - OVERALL  
1/8" = 1'-0"



MECHANICAL ELECTRICAL ENGINEERS  
WWW.KLHENGINEERS.COM  
LEWISTON, KENTUCKY  
LOUISVILLE, KENTUCKY  
NEW YORK, NEW YORK

**KLH ENGINEERS**  
KOHRS LONNEMANN HELL ENGINEERS, INC.  
1538 ALEXANDRIA PIKE, SUITE 11  
FORT THOMAS, KENTUCKY 41075  
TEL: 502-446-8656  
FAX: 502-446-8658

PHASE 2 - BID SET  
**KLH ENGINEERS INC. HEADQUARTERS**  
1538 ALEXANDRIA PIKE  
FORT THOMAS, KY 41075

NOT FOR CONSTRUCTION

REVISIONS	
10-11-24	ISSUED FOR BID

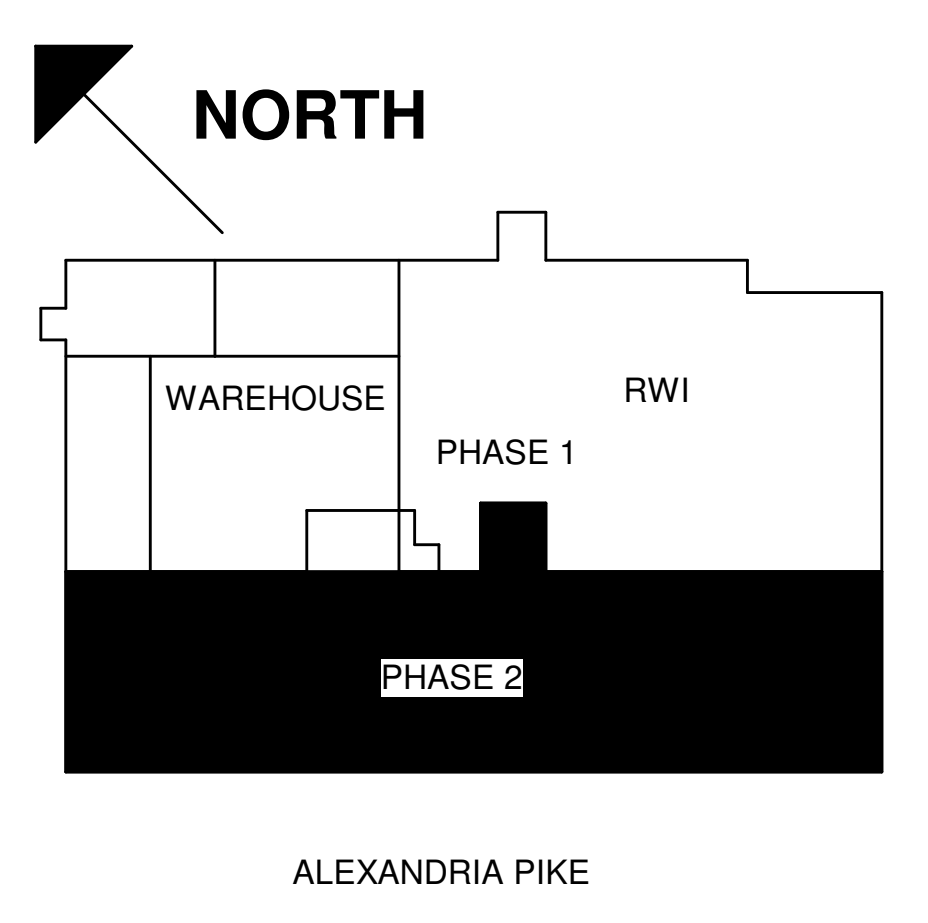
DWN: CES CHK: KTS  
DATE: 10.11.24  
PROJECT #: 2024.00  
MECHANICAL NEW - PIPING - OVERALL

M2-301  
1" REFERENCE  
KLH PROJECT #  
2024

OWNERSHIP OF INSTRUMENTS OF SERVICE: All data, notes and other documents and instruments prepared by the Consultant as instruments of service shall remain the property of the Consultant. The Consultant shall retain all common law, statutory and other reserved rights, including, without limitation, the copyright therein.

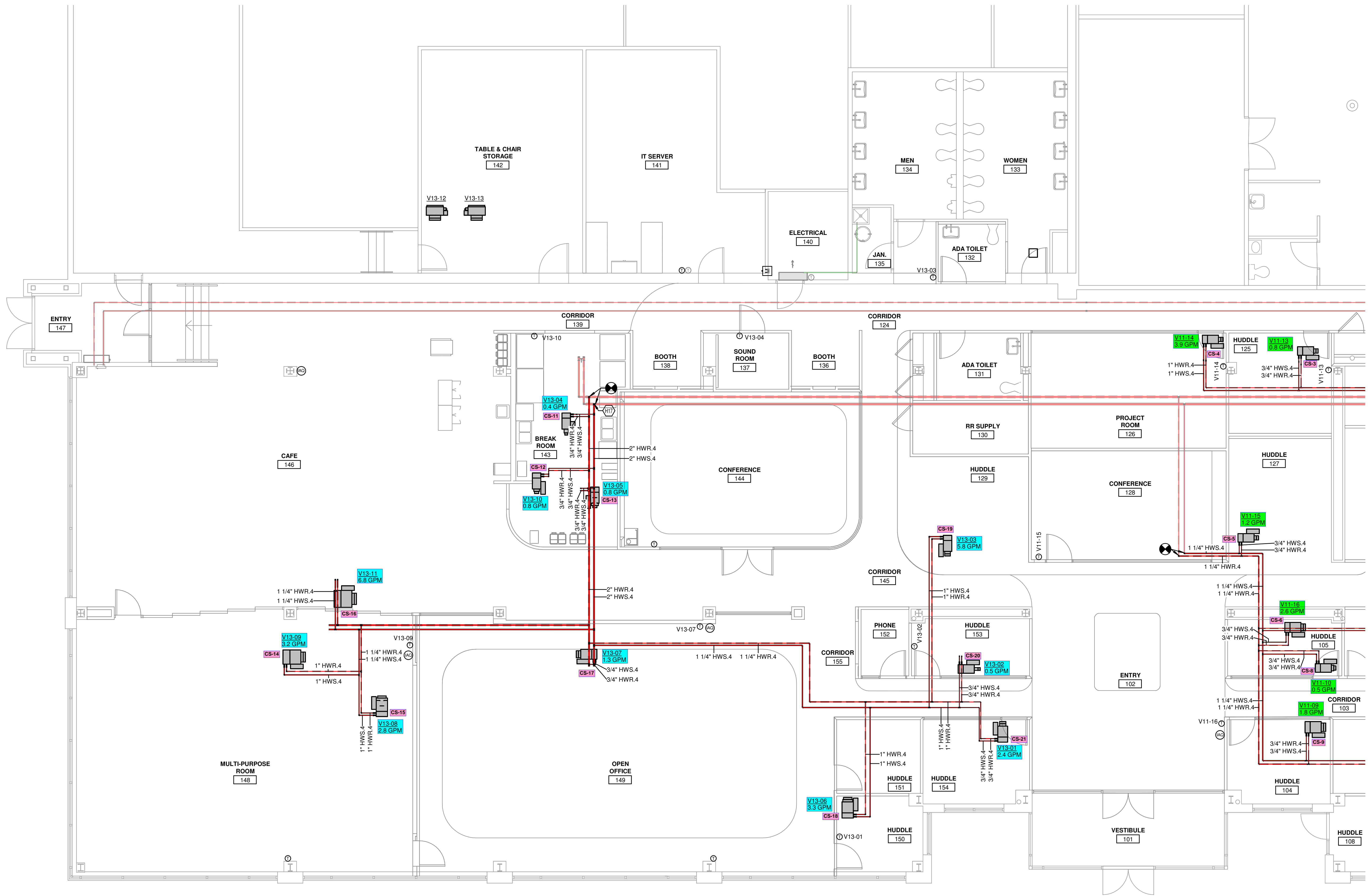
10/10/2024 10:01:30 C:\Users\dpinca\Documents\Revit\2024\00-23-MEP-KLH Headquarters Renovation\_dpince.rvt

Pipe Type Legend			
Mark	Color	System Name	Pipe Material
CD.19		CD - Condensate	19 - PVC - Schedule 40 - ASTM D1785/D2665
CD.4		CD - Condensate	4 - Copper - Type K - ASTM B88
HWR.4		HWR - Hot Water Return	4 - Copper - Type K - ASTM B88
HWS.4		HWS - Hot Water Supply	4 - Copper - Type K - ASTM B88



MECHANICAL ELECTRICAL ENGINEERS  
WWW.KLHENGINEERS.COM

**KLH ENGINEERS**  
KOHRS LONNEMANN HELL ENGINEERS, INC.  
1538 ALEXANDRIA PIKE, SUITE 11  
FORT THOMAS, KENTUCKY 41075  
TEL: 502-446-8558  
FAX: 502-446-8558



PHASE 2 - BID SET

**KLH ENGINEERS INC. HEADQUARTERS**  
1538 ALEXANDRIA PIKE  
FORT THOMAS, KY 41075

NOT FOR CONSTRUCTION

REVISIONS	
10-11-24	ISSUED FOR BID

DWN: CES CHK: KTS  
DATE: 10.11.24  
PROJECT #: 2024.00  
MECHANICAL  
NEW - PIPING - NORTH

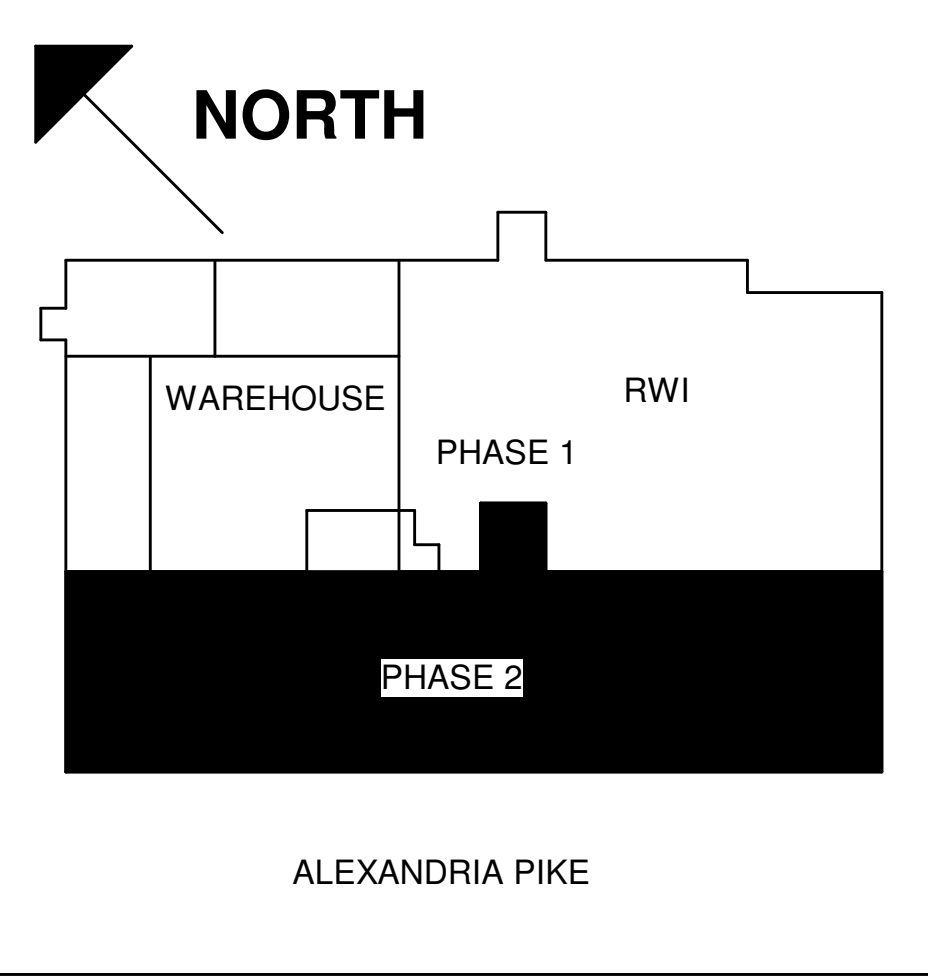
M2-301N  
1" REFERENCE  
KLH PROJECT #  
2024

MECHANICAL NEW - PIPING - NORTH  
3/16" = 1'-0"

OWNERSHIP OF INSTRUMENTS OF SERVICE  
 All data, notes and other documents and instruments prepared by the Consultant as instruments of service shall remain the property of the Consultant. The Consultant shall retain all common law, statutory and other reserved rights, including, without limitation, the copyright therein.

10/10/2024 10:01:50 C:\Users\dpnce\Documents\Revit\2024.00-23-MEP-KLH Headquarters Renovation\_dpnce.rvt

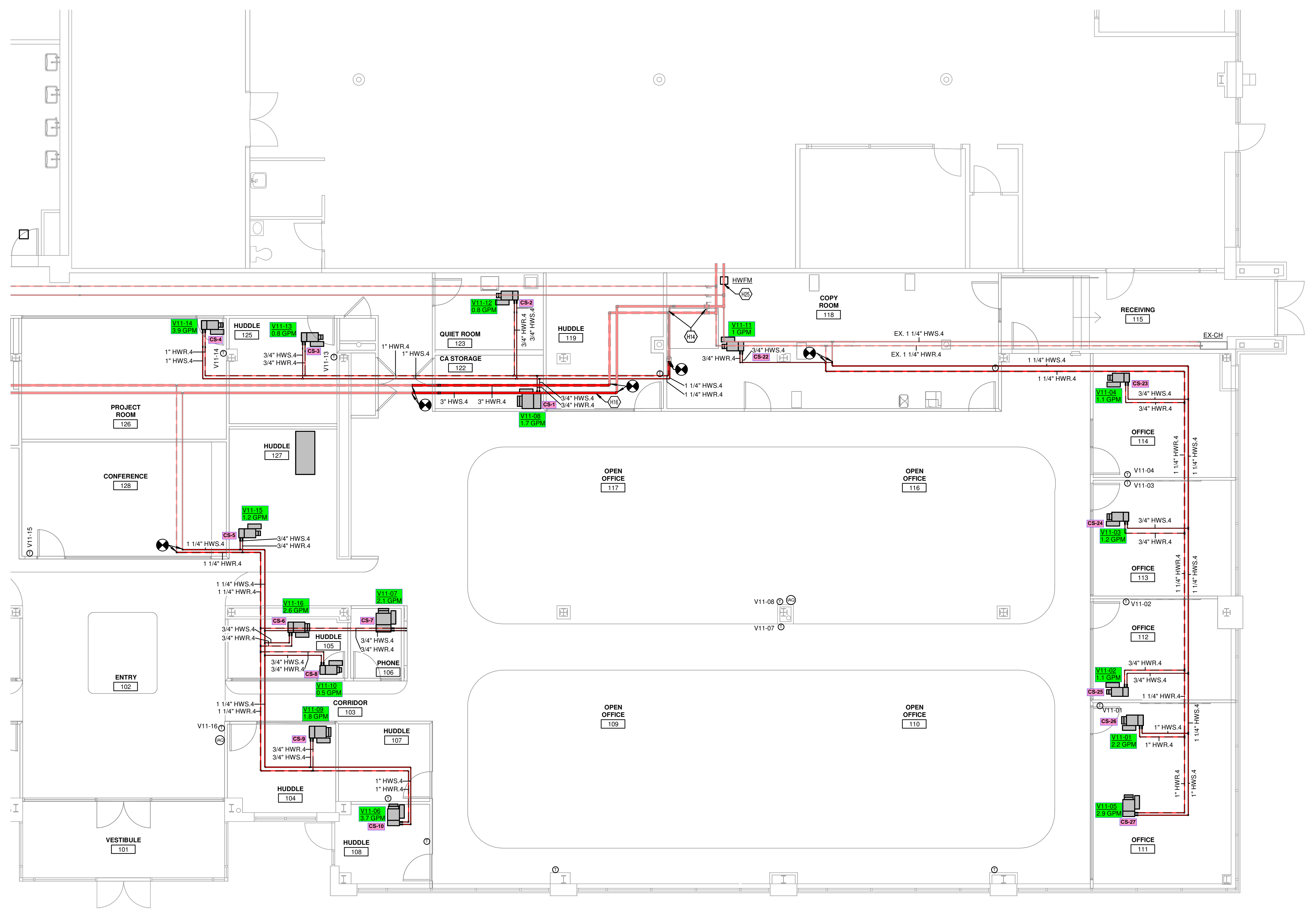
Pipe Type Legend			
Mark	Color	System Name	Pipe Material
HWR.4		HWR - Hot Water Return	4 - Copper - Type K - ASTM B88
HWS.4		HWS - Hot Water Supply	4 - Copper - Type K - ASTM B88



MECHANICAL ELECTRICAL ENGINEERS  
 WWW.KLHENGINEERS.COM  
**KLH ENGINEERS**  
 KOHRS LONNEMANN HELL ENGINEERS, INC.  
 1538 ALEXANDRIA PIKE, SUITE 111  
 FORT THOMAS, KENTUCKY 41075  
 855-446-8558 FAX  
 855-446-8558 FAX

**KEYED NOTES**

- H14 INSULATE PIPING WHERE INSULATION IS MISSING AND INTENDED FOR REUSE. AREA ROUGHLY BETWEEN ARROWS.
- H16 REROUTE HOT WATER MAIN IN TRUSS WEBBING ABOVE NEW DUCTWORK.
- H25 PROVIDE HYDRONIC FLOW METER ON HOT WATER PIPE MAIN INTO SPACE. METER TO BE CONNECTED TO BAS SYSTEM.



1 MECHANICAL NEW - PIPING - SOUTH  
 3/16" = 1'-0"

PHASE 2 - BID SET  
**KLH ENGINEERS INC. HEADQUARTERS**  
 1538 ALEXANDRIA PIKE  
 FORT THOMAS, KY 41075

NOT FOR CONSTRUCTION

REVISIONS	
10-11-24	ISSUED FOR BID

DWN: CES CHK: KTS  
 DATE: 10.11.24  
 PROJECT #: 2024.00

MECHANICAL  
 NEW - PIPING - SOUTH  
**M2-301S**  
 1" REFERENCE  
 KLH PROJECT #  
 2024