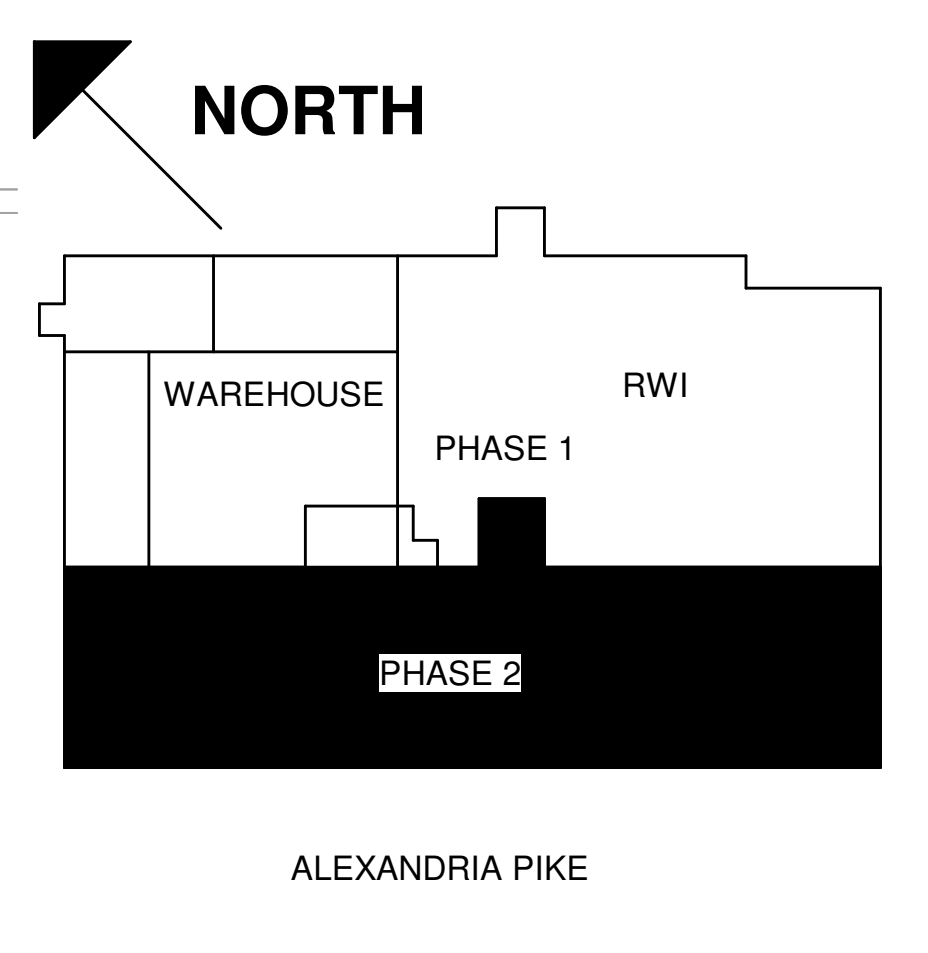
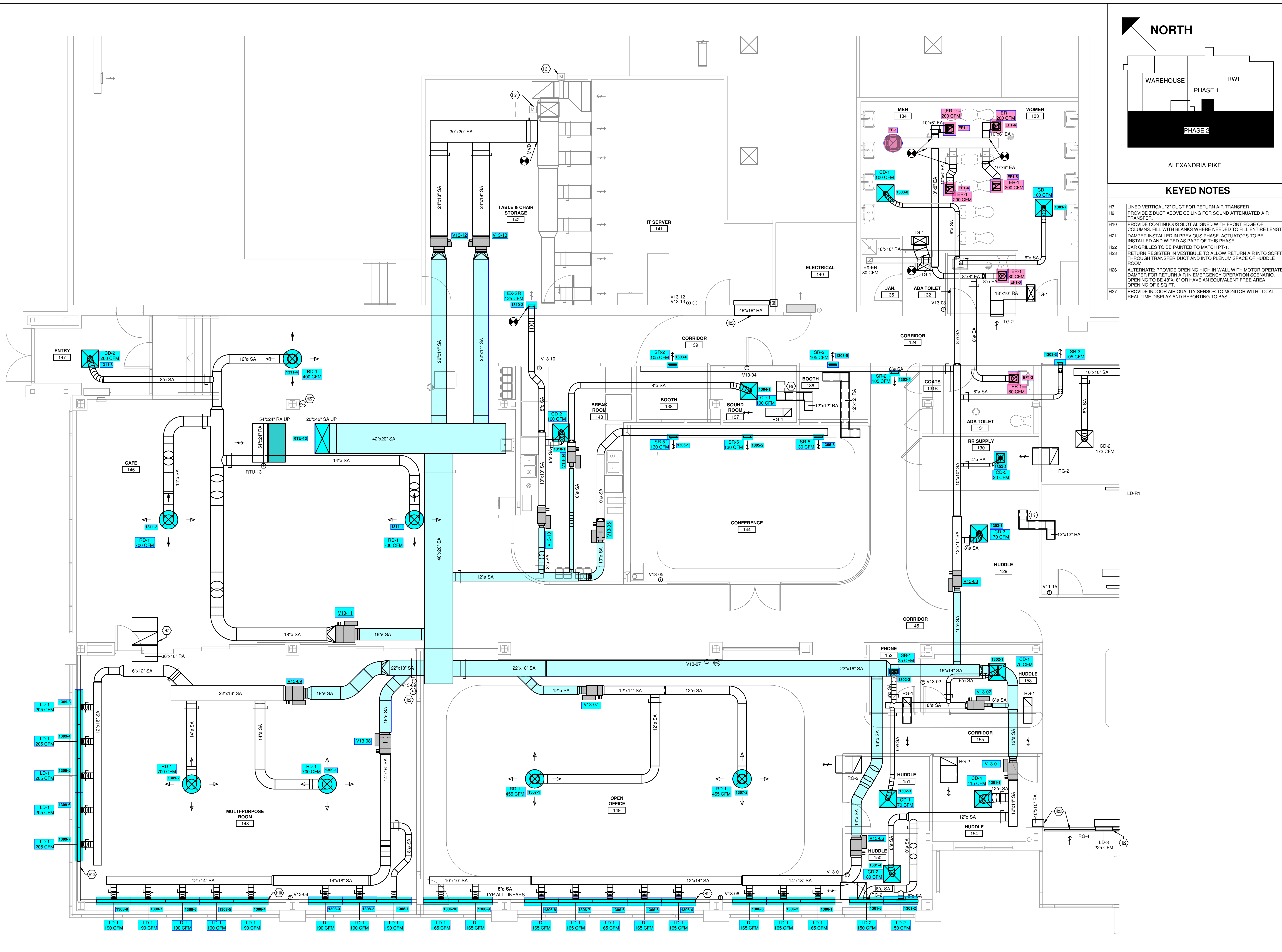


OWNERSHIP OF INSTRUMENTS OF SERVICE
 The Consultant shall retain all common law, statutory and other reserved rights, including, without limitation, the copyright therein.

10/10/2024 10:00:33 Users\dprince\Documents\Revit\2024\00-23-MEP-KLH Headquarters Renovation_dprince.rvt



- KEYED NOTES**
- H7 LINED VERTICAL "Z" DUCT FOR RETURN AIR TRANSFER
 - H9 PROVIDE Z DUCT ABOVE CEILING FOR SOUND ATTENUATED AIR TRANSFER
 - H10 PROVIDE CONTINUOUS SLOT ALIGNED WITH FRONT EDGE OF COLUMNS. FILL WITH BLANKS WHERE NEEDED TO FILL ENTIRE LENGTH.
 - H21 DAMPER INSTALLED IN PREVIOUS PHASE ACTUATORS TO BE INSTALLED AND WIRED AS PART OF THIS PHASE.
 - H22 BAR GRILLES TO BE PAINTED TO MATCH PT-1.
 - H23 RETURN REGISTER IN VESTIBULE TO ALLOW RETURN AIR INTO SOFFIT, THROUGH TRANSFER DUCT AND INTO PLENUM SPACE OF HUDDLE ROOM.
 - H26 ALTERNATE: PROVIDE OPENING HIGH IN WALL WITH MOTOR OPERATED DAMPER FOR RETURN AIR IN EMERGENCY OPERATION SCENARIO. OPENING TO BE 48"x18" OR HAVE AN EQUIVALENT FREE AREA OPENING OF 6 SQ. FT.
 - H27 PROVIDE INDOOR AIR QUALITY SENSOR TO MONITOR WITH LOCAL REAL TIME DISPLAY AND REPORTING TO BAS.

1 MECHANICAL NEW - DUCTWORK - NORTH
 1/4" = 1'-0"

MECHANICAL ELECTRICAL ENGINEERS
 WWW.KLHENGINEERS.COM
KLH ENGINEERS
 KOHRS LONNEMANN HELL ENGINEERS, INC.
 LEWISTON, KENTUCKY
 LOUISVILLE, KENTUCKY
 FT. THOMAS, KENTUCKY 41075
 855-446-8558 FAX
 855-446-8558 FAX

PHASE 2 - BID SET
KLH ENGINEERS INC. HEADQUARTERS
 1538 ALEXANDRIA PIKE
 FORT THOMAS, KY 41075

NOT FOR CONSTRUCTION

REVISIONS

NO.	DATE	DESCRIPTION
10-11-24	ISSUED FOR BID	

DWN: CES CHK: KTS
 DATE: 10.11.24
 PROJECT #: 2024.00
 MECHANICAL NEW - DUCTWORK - NORTH

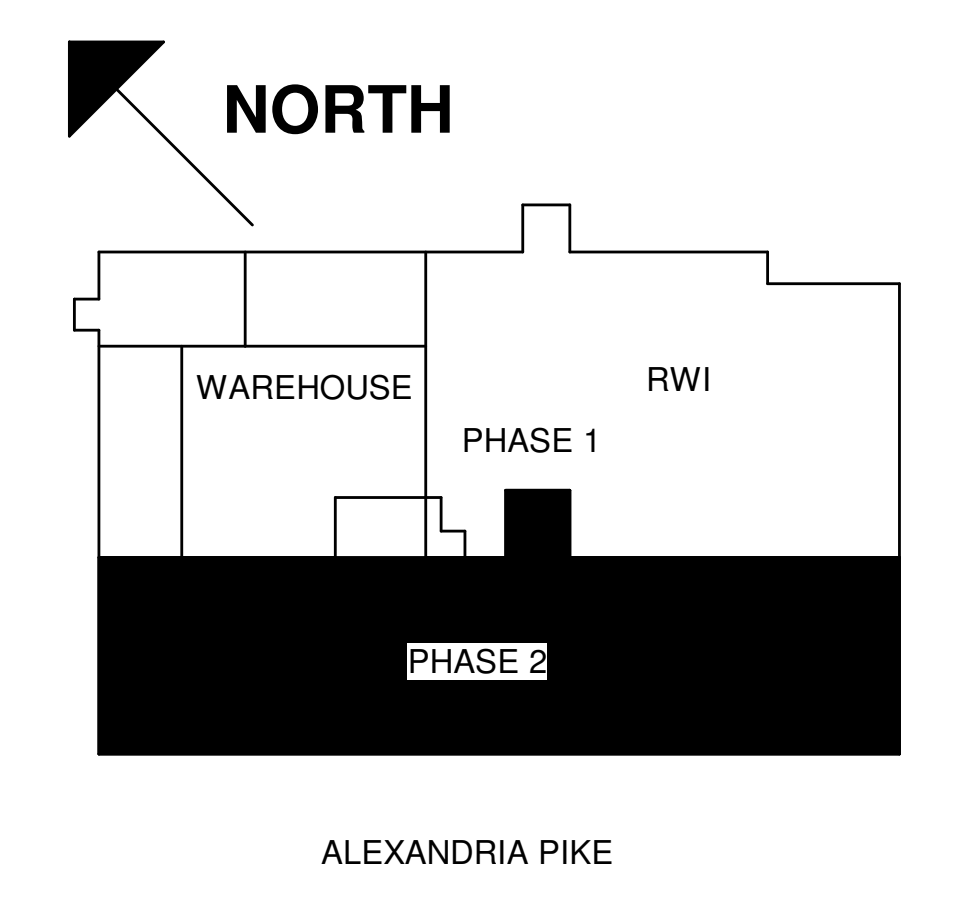
M2-201N
 1" REFERENCE
 KLH PROJECT #
 2024

UNIVERSITY OF INSTRUMENTS OF SERVICE
 All drawings, notes and other documents prepared by the Consultant are instruments of service and shall remain the property of the Consultant. The Consultant shall retain all common law, statutory and other reserved rights, including, without limitation, the copyright therein.

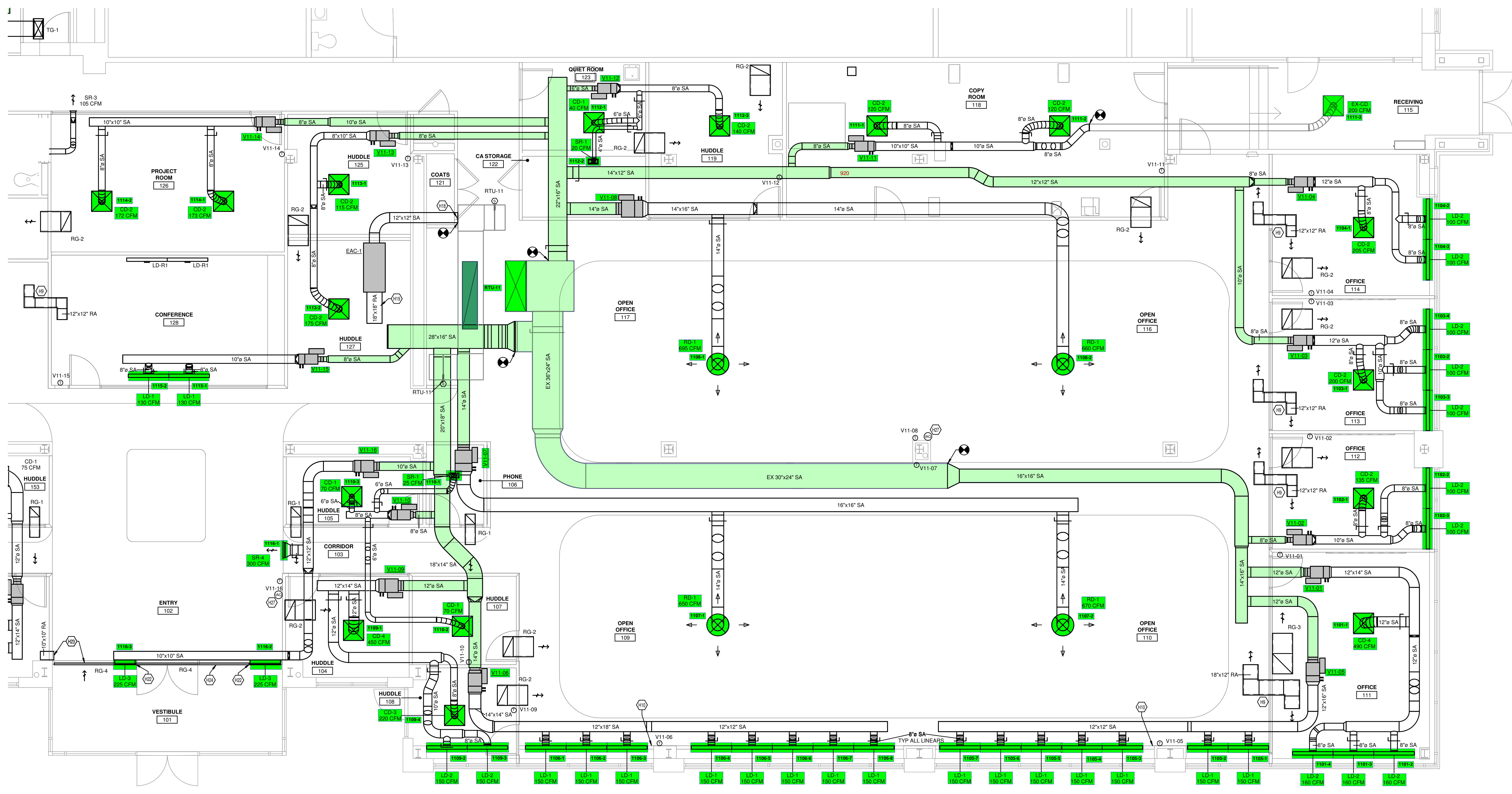
10/10/2024 10:00:00 FC:\Users\dpince\Documents\Revit\2024\00-23-MEP-KLH-Headquarters Renovation_dpince.rvt

KEYED NOTES

H9	PROVIDE Z DUCT ABOVE CEILING FOR SOUND ATTENUATED AIR TRANSFER.
H10	PROVIDE CONTINUOUS SLOT ALIGNED WITH FRONT EDGE OF COLUMNS. FILL WITH BLANKS WHERE NEEDED TO FILL ENTIRE LENGTH.
H18	CONNECT OUTLET OF AIR SCRUBBER TO EXISTING RETURN DUCTWORK IN PLENUM SPACE.
H19	AIR SCRUBBER INLET TO PULL FROM PLENUM SPACE.
H22	BAR GRILLES TO BE PAINTED TO MATCH PT-1.
H23	RETURN REGISTER IN VESTIBULE TO ALLOW RETURN AIR INTO SOFFIT. THROUGH TRANSFER DUCT AND INTO PLENUM SPACE OF HUDDLE ROOM.
H24	LINEAR SLOT BLANK SECTION FOR CONTINUOUS LOOK.
H27	PROVIDE INDOOR AIR QUALITY SENSOR TO MONITOR WITH LOCAL REAL TIME DISPLAY AND REPORTING TO BAS.



MECHANICAL ELECTRICAL ENGINEERS
 WWW.KLHENGINEERS.COM
KLH ENGINEERS
 KOHRS LONNEMANN HELL ENGINEERS, INC.
 1538 ALEXANDRIA PIKE, SUITE 111
 FORT THOMAS, KENTUCKY 41075
 502-446-8558
 502-446-8558 FAX



① MECHANICAL NEW - DUCTWORK - SOUTH
 1/4" = 1'-0"

PHASE 2 - BID SET
KLH ENGINEERS INC. HEADQUARTERS
 1538 ALEXANDRIA PIKE
 FORT THOMAS, KY 41075

NOT FOR
CONSTRUCTION

REVISIONS	
10-11-24	ISSUED FOR BID

DWN: CES CHK: KTS
 DATE: 10.11.24
 PROJECT #: 2024.00
 MECHANICAL NEW -
 DUCTWORK -
 SOUTH

M2-201S
 1" REFERENCE
 KLH PROJECT #
 2024